

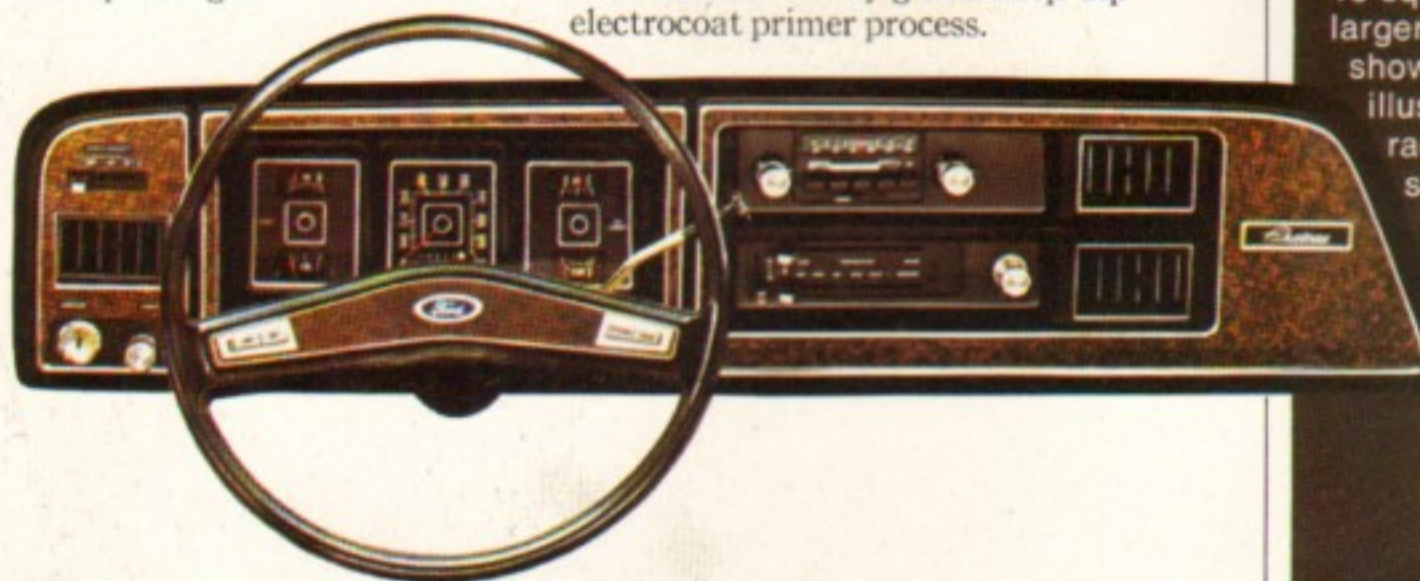
CLUB WAGONS '75



Introducing the new '75 Ford Club Wagons.

Ford redesigns the club wagon . . . creates a new generation of value, usefulness and luxury in a versatile wagon that can seat up to 12 adults in spacious comfort or carry over 3365-pound loads (passengers and luggage). For '75, the engine and front axle have been moved forward . . . wheelhousings are out of the way . . . there's more room for driver and front passenger.

New durability. The '75 Ford Club Wagon is the only American wagon of its type to have separate body frame construction (as opposed to unitized body). This construction makes for rugged strength and long life. And to protect the body from the effects of time and weather, Ford takes these extra steps: key body components are galvanized, others are coated with zinc-rich primer . . . and then the *entire* body gets a deep-dip electrocoat primer process.



You'll find, too, a new solid "command" feeling in ride and handling . . . and a quiet that says *quality*. It's the quiet you get with an out-front engine, insulating and new body-on-frame construction with vibration-dampening rubber body mounts. New wheelbases—124 and 138 inches—and redesigned Twin-I-Beam front suspension smooth the ride. Steering and stability are improved, too. And power front disc brakes with a 20% greater resistance to fade are standard . . . power steering and radial tires are optional.



New service ease. Ford's engine-forward design allows convenient routine service from the front. Now, up to 17 easy out-front service checks.

The Club Wagon's new luxury is evident from the Chateau illustrations at right. And a host of new innovations and options are offered . . . one-way glass, AM/FM stereo radio with tape player, fingertip speed control, and many more as shown on pages 6 and 7.

New Ford Club Wagons combine separate body/frame construction, heavy-duty truck engines, power-trains and capacities . . . with important options like auxiliary fuel tank for up to 42.6-gallons total capacity and trailer towing packages . . . all in a comfortable, luxurious wagon with rugged, smooth riding Twin-I-Beam independent front suspension.



New driving ease starts with a well-designed, functional instrument panel. Visibility is great with a big (over 13-sq. ft.) windshield area . . . 18% larger than last year's. The options shown in the Chateau Club Wagon illustrations are: AM/FM stereo radio, air conditioning, fingertip speed control, SelectShift Cruise-O-Matic transmission, Captain's chairs with Argyle cloth inserts, seating for 12, WSW tires, low-mount mirrors, Special Tu-Tone and full wheel covers.





CHATEAU

The big new look of luxury, in your choice of room plans.

Comfortable, practical new Club Wagons provide spacious seating and generous luggage room in a variety of "room plans." You can choose seating for 5, 8 or 12

passengers with the capacity to carry people and luggage loads of up to 3365 pounds. And you can select from three attractive levels of luxury.

Chateau Club Wagon features:

(in addition to or in place of Custom) Super Soft Vinyl seat trim in blue, green or tan • color-keyed cut-pile carpeting full-length of floor, lower section of engine cover and rear wheel wells • vinyl door trim panels with woodgrained vinyl applique in center and carpeted lower panel • color-keyed vinyl headlining (insulated) • woodgrained vinyl horn bar insert • color-keyed vinyl spare tire cover. **Exterior features:** bright grille, bumpers, lower bodyside and rear moldings.

Custom Club Wagon features:

(in addition to or in place of standard) color-keyed padded full-length instrument panel with woodgrained vinyl applique • color-keyed seat pedestal • color-keyed cowl trim panels • cigarette lighter • color-keyed patterned, padded vinyl door trim panels, insulated full-length floor mats, window garnish moldings • color-keyed armrests on 3- and 4-passenger seats • 3 coat hooks • aluminum scuff plates on side and rear doors. **Exterior features:** bright hub caps, taillight bezels, and window frames.

Standard Club Wagon features: full-foam front bucket seats (see seating arrangements) • color-keyed patterned vinyl seat trim in black, blue, green or tan • seat belts • color-keyed windshield trim moldings • fresh air heater/defroster • fresh air vents with blend air control • green back-lighting for instrumentation • 2-speed electric windshield wipers • wiper-arm-mounted washer jets • energy-absorbing sun visors • 10-in. rearview mirror • dome lights • front compartment hardboard headlining and insulated floor mat with scuff plates • push-pull door lock buttons (front and sliding doors) • 3 color-keyed armrests • coat hook • electric horns • door checks • flip-open windows in sliding door and opposite windows. **Exterior features:** argent bumpers and hub caps, bright windshield molding, and 5-in. x 8-in. mirrors.

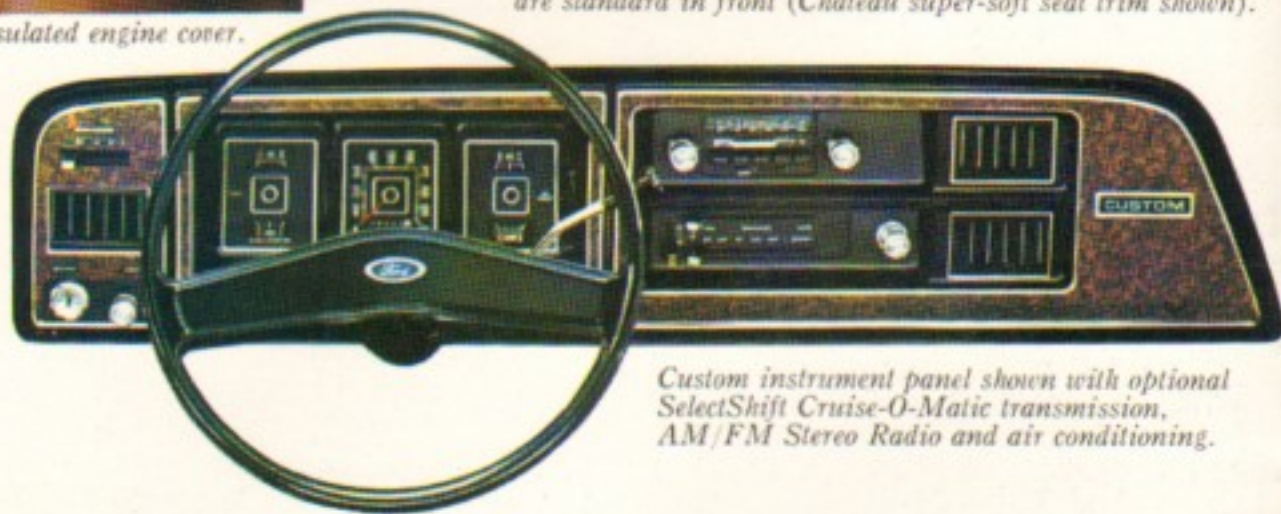
Chateau door panel with woodgrained vinyl center insert and carpeted lower panel and optional stereo radio speaker.



Molded, insulated engine cover.



Captain's swivel chairs are optional (shown with Chateau Argyle cloth insert option). Comfortable full-foam bucket seats are standard in front (Chateau super-soft seat trim shown).



Custom instrument panel shown with optional SelectShift Cruise-O-Matic transmission, AM/FM Stereo Radio and air conditioning.

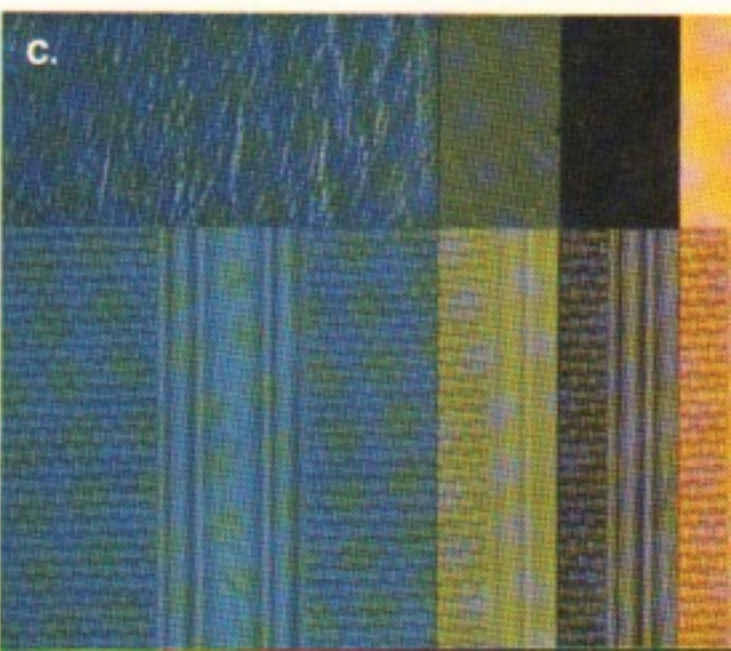
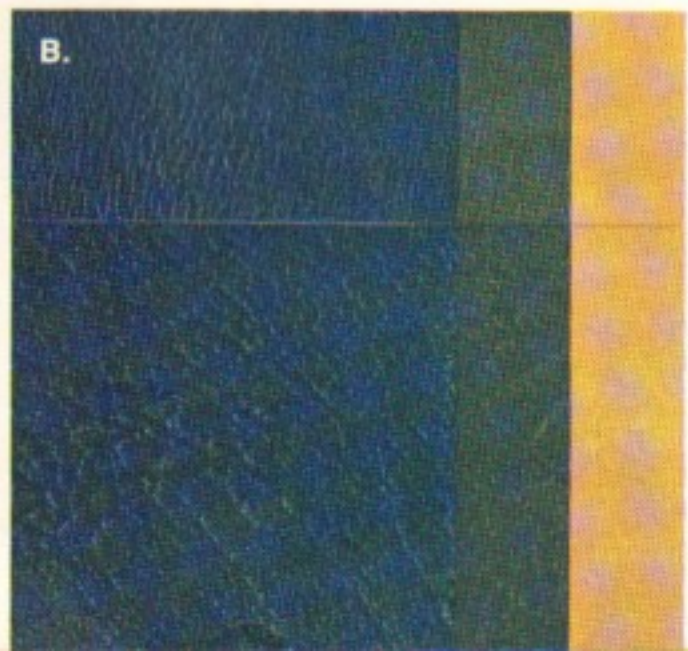
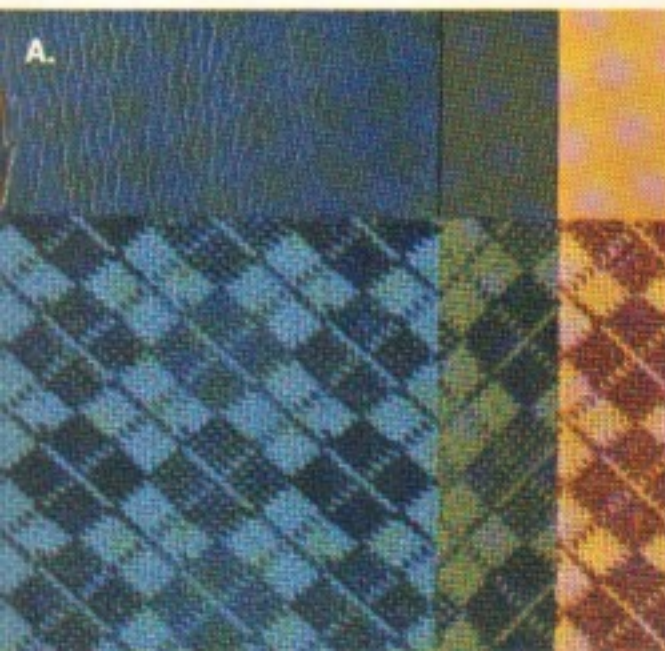


A. Argyle cloth seat trim inserts in blue, green or tan optional in Chateau Club Wagons.

B. Super Soft Vinyl seat trim in blue, green or tan standard in Chateau Club Wagons.

C. Patterned vinyl seat inserts with vinyl trim in blue, green, black (std. only) or tan is standard in Standard and Custom Club Wagons.

Custom Club Wagon interior with patterned vinyl front bucket seats, padded vinyl door trim panels and full-length floor mats. Same seats are included in Standard Club Wagon.



Look close at all the options you Fun, functional and recreational

Auxiliary fuel tank with electric switch-over gives an additional 18-gallon fuel capacity for a total capacity of up to 42.6 gallons. This tank is midship-mounted between sturdy frame rails.

SelectShift Cruise-O-Matic transmission allows fully automatic or manual shifting.

Fingertip speed control maintains preset speed for optimum operating economy and driving ease. A great convenience for longhaul trips. Control disengages when you brake or actuate switch on steering wheel horn bar.



Engine choice. The thrifty 300-cu. in. Six is standard in the E-100 and 150 with the popular 351-cu. in. V-8 optional. The 351-cu. in. V-8 is standard in the E-250 with 460-cu. in. V-8 optional. Both the 351- and 460-cu. in. V-8's have been specially strengthened for demanding Club Wagon use. All engines feature Solid State Ignition System that prolongs spark plug life and reduces scheduled maintenance.

ENGINE SPECIFICATIONS			
	300 Six	351 V-8	460 V-8
Displacement	300 cu. in.	351 cu. in.	460 cu. in.
Bore & Stroke (in.)	4.00 x 3.98	4.00 x 3.50	4.36 x 3.85

FUEL CHART		
SERIES	GVW RANGE	USABLE FUEL
100	5600 to 6000 lb.	unleaded only
150	6050 to 6300 lb.	regular or unleaded
250	7100 to 8750 lb.	regular or unleaded



Swing-Lok Western
(6 x 10 in.)



Swing-Lok, low-mount Western
(7½ x 10¼ in.)

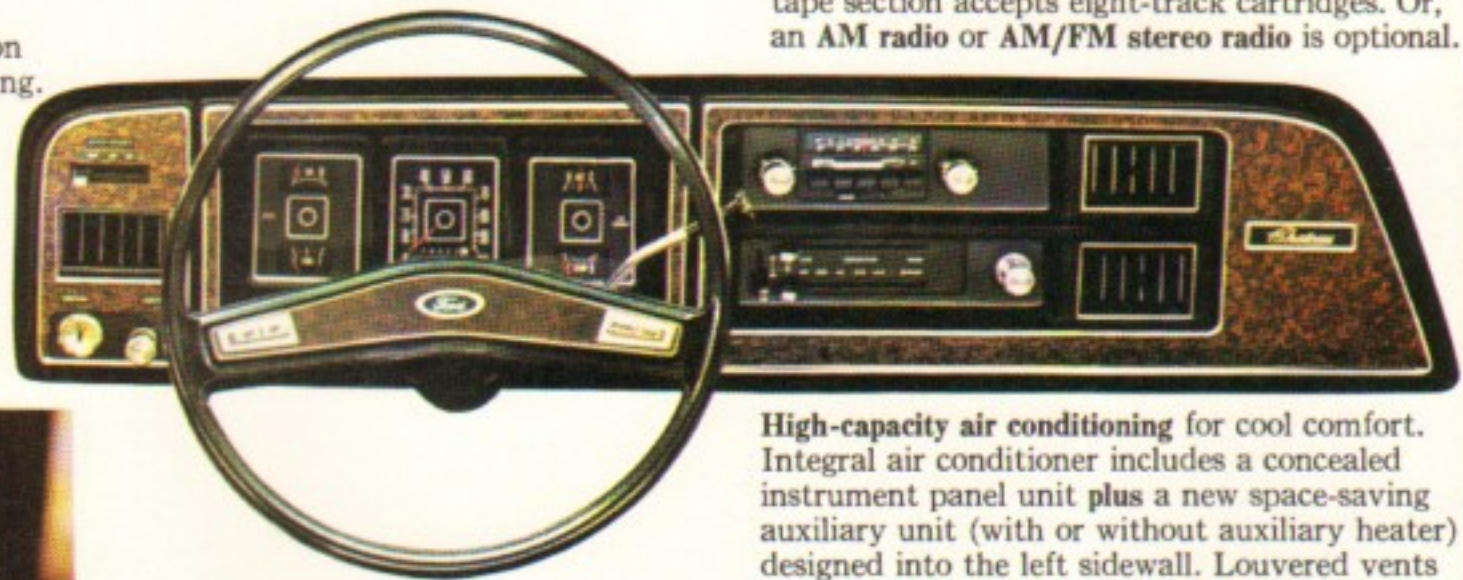


Bright Non Telescopic
(5 x 8 in.)
(painted standard)



Swing-out recreation
(7½ x 10½ in.)

Power steering for optimum maneuvering and handling ease. And the Club Wagon's new integral system is simpler, more reliable and easier to service than a separate power cylinder system.



AM/FM stereo radio with tape player provides a complete sound/entertainment system. The speakers, mounted in both front doors and bodysides at rear, surround you with sound and provide excellent clarity and tonal range. The tape section accepts eight-track cartridges. Or, an AM radio or AM/FM stereo radio is optional.

High-capacity air conditioning for cool comfort. Integral air conditioner includes a concealed instrument panel unit plus a new space-saving auxiliary unit (with or without auxiliary heater) designed into the left sidewall. Louvered vents in instrument panel and along the sidewall allow desired distribution of cooling air. Option includes tinted glass and insulation package.



Captain's chair swivels towards door or wagon interior, and has comfortable fold-down armrests. The Captain's chair also features color-keyed Super Soft Vinyl or Argyle cloth seat inserts and color-keyed pedestal cover. These individual chairs are available for the driver and front passenger.



One-way glass (except in windshield and front doors) provides privacy and keeps Club Wagon cooler. This specially darkened glass cuts solar heat transfer compared to clear glass. Option includes conventional tinted windshield and front door glass. Or, conventional tinted glass is optional in windshield or all the way around.



Wheel covers. These bright-metal, full wheel covers are a dressy addition to your Club Wagon's appearance.

Additional optional equipment is listed on the back cover.

have.

Cutaway. Ford's new chassis has full-length, ladder-type frame designed for mounting special commercial bodies.

Choose new 138- or 158-in. wheelbase, single or dual rear tires, and GVW's up to 11,000 lb. Special frame spacers with rubber body mounts provide a flat, well-cushioned surface for the body of your choice.



Camper modifications. The new Ford Club Wagon's long wheelbases and sturdy body-on-frame construction make it a logical choice for popular camper modifications.

Various types of conversions are available from several manufacturers.



Camper body installations are the responsibility of the body manufacturer and not Ford Motor Company.

Chassis-mounted campers. E-250 and E-350 Cutaway Chassis (see above)

equipped with Camper Special Packages are designed to readily accommodate modern motor homes up to 21 ft. long. Choice of Low Line or High Line Camper Special Packages . . . contents of both packages are detailed on the back cover.



School Buses. Ford Club Wagons are being modified by various manufacturers with special equipment and seating to carry up to 16 pupils. The Ford School Bus Package includes heavy-duty alternator and battery, banded front door main glass, tinted/laminated glass, inside rear door latch, full-length headlining, front and rear roof warning lights with door and manual switches.



Color and Tu-Tone combinations. Standard Club Wagon Colors are: Wimbledon White, Candyapple Red, Brook Blue Metallic, Wind Blue, Hatteras Green Metallic, Baytree Green, Glen Green, Hot Ginger Metallic, Vineyard Gold, Parrot Orange, Autumn Tan and Chrome Yellow. Custom and Chateau colors are: Brook Blue Metallic, Hatteras Green Metallic, Autumn Tan, Chrome Yellow and Wimbledon White. Medium Green Glow and Medium Ginger Glow are optional on Standard, Custom and Chateau Club Wagons. Five separate and distinctive Tu-Tone paint schemes are available to customize your Club Wagon.



Special Tu-Tone

Special Tu-Tone (138-in. wb. only): accent color is applied between the drip rail and the upper bodyside moldings and below lower bodyside molding. Includes moldings.

Center Accent Tu-Tone (138-in. wb. only): Accent color is applied between the drip rail and upper bodyside moldings. Includes moldings.

Combination Tu-Tone (138-in. wb. only): Regular and Deluxe options are combined with the accent color applied as specified for these options.

Deluxe Tu-Tone (138-in. wb. only): the accent color is applied below the lower bodyside and rear molding. Side and rear molding are included.

Regular Tu-Tone: the accent color is applied to the roof.



Center Accent Tu-Tone



Combination Tu-Tone



Deluxe Tu-Tone



Regular Tu-Tone

have.

Cutaway. Ford's new chassis has full-length, ladder-type frame designed for mounting special commercial bodies.

Choose new 138- or 158-in. wheelbase, single or dual rear tires, and GVW's up to 11,000 lb. Special frame spacers with rubber body mounts provide a flat, well-cushioned surface for the body of your choice.



Camper modifications. The new Ford Club Wagon's long wheelbases and sturdy body-on-frame construction make it a logical choice for popular camper modifications.

Various types of conversions are available from several manufacturers.



Camper body installations are the responsibility of the body manufacturer and not Ford Motor Company.

Chassis-mounted campers. E-250 and E-350 Cutaway Chassis (see above)

equipped with Camper Special Packages are designed to readily accommodate modern motor homes up to 21 ft. long. Choice of Low Line or High Line Camper Special Packages . . . contents of both packages are detailed on the back cover.



School Buses. Ford Club Wagons are being modified by various manufacturers with special equipment and seating to carry up to 16 pupils. The Ford School Bus Package includes heavy-duty alternator and battery, banded front door main glass, tinted/laminated glass, inside rear door latch, full-length headlining, front and rear roof warning lights with door and manual switches.



Color and Tu-Tone combinations. Standard Club Wagon Colors are: Wimbledon White, Candyapple Red, Brook Blue Metallic, Wind Blue, Hatteras Green Metallic, Baytree Green, Glen Green, Hot Ginger Metallic, Vineyard Gold, Parrot Orange, Autumn Tan and Chrome Yellow. Custom and Chateau colors are: Brook Blue Metallic, Hatteras Green Metallic, Autumn Tan, Chrome Yellow and Wimbledon White. Medium Green Glow and Medium Ginger Glow are optional on Standard, Custom and Chateau Club Wagons. Five separate and distinctive Tu-Tone paint schemes are available to customize your Club Wagon.



Special Tu-Tone

Special Tu-Tone (138-in. wb. only): accent color is applied between the drip rail and the upper bodyside moldings and below lower bodyside molding. Includes moldings.

Center Accent Tu-Tone (138-in. wb. only): Accent color is applied between the drip rail and upper bodyside moldings. Includes moldings.

Combination Tu-Tone (138-in. wb. only): Regular and Deluxe options are combined with the accent color applied as specified for these options.

Deluxe Tu-Tone (138-in. wb. only): the accent color is applied below the lower bodyside and rear molding. Side and rear molding are included.

Regular Tu-Tone: the accent color is applied to the roof.



Center Accent Tu-Tone



Combination Tu-Tone



Deluxe Tu-Tone



Regular Tu-Tone

Three new Trailer Towing Packages are available for '75. The LD Package (for Class I trailers up to 2,000 lb.) includes: extra cooling • wiring harness • three relays • HD flasher • "Trailer Special" decal. The HD Package (for Class II, III and IV trailers from 2,000 to 6,000 lb.) adds: 77 amp-hr battery • dual horns • fuel monitor warning light • ammeter and oil pressure gauge • 90 amp. alternator • external auxiliary transmission oil cooler. The Extra HD Package (for trailers from 6,000 to 8,000 lb.) adds increased capacity front springs.



1975 Ford Club Wagon Specifications

	MODEL			AXLES		BRAKES		SPRINGS		SHOCK ABSORBERS	TIRES* No.—Size
	SERIES	WB	GVW (Rating)	(Rating—lb.) Front Rear				(Rating @ ground—lb.) Front Rear			
5-Passenger:	E-100	124"	5600	3150	3600	Power	Front disc	1435	1440	Frnt. & Rear	5—G78—15 B
		124"	5900	3150	3600	Power	Front disc	1435	1650	Frnt. & Rear	5—H78—15 B
	E-150	138"	6050	3150	3600	Power	Front disc	1435	1655	Frnt. & Rear	5—G78—15 D
		138"	6300	3150	3600	Power	Front disc	1435	1855	Frnt. & Rear	5—H78—15 D
8-Passenger:	E-250	138"	7100	4000	5300	Power	Front disc	1700	2050	Frnt. & Rear	5—8.00 x 16.5 D (TT)
		138"	7750	4000	5300	Power	Front disc	1700	2350	Frnt. & Rear	5—8.75 x 16.5 D (TT)
		138"	8350	4000	5300	Power	Front disc	1700	2650	Frnt. & Rear	5—8.75 x 16.5 E (TT)
		138"	8550	4000	5300	Power	Front disc	1700	2650	Frnt. & Rear	5—8.75 x 16.5 E (TT)
12-Passenger:	E-100	124"	6000	3150	3600	Power	Front disc	1435	1650	Frnt. & Rear	5—G78—15 D
		138"	6300	3150	3600	Power	Front disc	1510	1855	Frnt. & Rear	5—H78—15 D
	E-250	138"	7200	4000	5300	Power	Front disc	1700	2050	Frnt. & Rear	5—8.00 x 16.5 D (TT)
		138"	7750	4000	5300	Power	Front disc	1700	2350	Frnt. & Rear	5—8.75 x 16.5 D (TT)
		138"	8350	4000	5300	Power	Front disc	1700	2650	Frnt. & Rear	5—8.75 x 16.5 E (TT)
E-250	138"	8550	4000	5300	Power	Front disc	1700	2650	Frnt. & Rear	5—8.75 x 16.5 E (TT)	
	138"	8750	4000	5300	Power	Front disc	1850	2650	Frnt. & Rear	5—8.75 x 16.5 E (TT)	

*Load range B = 4PR, D = 8PR, E = 10PR.

TT = Truck-type.

Standard Chassis Equipment—Sliding side door • dry-type air cleaner, exhaust emission control system and thermostatically controlled carburetor air intake • 3-speed manual transmission fully synchronized in all forward speeds • 40-amp. alternator and 41 amp-hr battery • 18-gal. fuel tank (E-100), 24.6-gal. fuel tank (E-150, 250).

Optional equipment (including or in addition to those shown on pages 6 & 7) includes: high-output heater/defroster • auxiliary hot water heater • bright grille and/or bumpers (std. on Chateau) • full-length, insulated floor mat (std. Custom and Chateau) • courtesy light switches for all doors • hinged side doors in place of sliding door (Standard Wagon only) • two-stage door positioners for all hinged double doors • 18-gallon auxiliary fuel tank • locking gas cap (includes matching lock and key with aux. tank) • intermittent 2-speed windshield wipers • instrument package (Fuel Monitor Warning Light, ammeter and oil pressure gauge) • Northland Special Package (includes engine block heater, 50% [—35°] antifreeze, 77 amp-hr battery, 60-amp. alternator and high-output heater) • engine block heater (single-element 400 watt with Six, dual-element 800 watt with V-8's)

• tinted glass (included with air conditioning) • full-length hardboard headlining (for Std. Wagon) • insulation package (included with air conditioning) • protection group (front door edge guards and front and side sliding door step well pads • shoulder harness in various combinations for (5-, 8- or 12-passenger seating) • spare tire cover (std. on Chateau) • bright hub caps (std. Custom and Chateau).

You have a choice of two Camper Special Packages for Cutaways. The **Low Line Camper Package** includes: 60 amp. alternator • 77 amp-hr battery • Auxiliary 81 amp-hr battery • HD shock absorbers w/E-250 • Custom trim package • Camper wiring harness (provides constant power source) • "Camper Special" emblem • Extra cooling package.

The **High Line Camper Special Package** includes all items in basic package along with the following in addition to or in place of items: • 90 amp. alternator • Adjustable passenger seat • External auxiliary transmission oil cooler • Fuel Monitor Warning Light, ammeter and oil pressure gauges • Front stabilizer bar • Dual horns • 351 V-8 engine • Chateau trim package • High-output heater • Power steering • Tinted windshield and front door glass.

Specifications, descriptions and illustrative material contained herein were as accurate as known at the time this publication was approved for printing. Ford Division reserves the right to discontinue models or options at any time or change specifications, equipment or design without notice and without incurring obligation. Specifications are applicable to units sold in the United States, its territories and possessions and may vary outside these areas. Special body installations and modifications are the responsibility of the body manufacturer. Owners should assure themselves of the load and handling capabilities of their vehicle when selecting a camper or contemplating custom add-ons and modifications. Some of the vehicle colors and paint combinations illustrated are special order options only. All options, accessories and whitewall tires illustrated or referred to as optional or available in this publication are at extra cost. Some options are required in combination with other options. For the price of the model with the equipment you desire or verification of specifications contained herein, see your Ford Dealer. In addition, since legal requirements and/or vehicle regulations vary from state to state, check with your local authorities and Ford Dealer for any special equipment requirements.

FORD CLUB WAGONS

FORD DIVISION

