

GOLDEN ANNIVERSARY LIMITED EDITION

NEW  
FOR **1979**

*The Model A*



**ROADSTER REPRODUCTION**

Starting with  
\$5,950  
F.O.B. DETROIT

## FOR FUN AND PLEASURE

It's an authentic reproduction of the 1928-29 Model A Roadster, mounted on a 1979 Ford drivetrain.

### PERFECT FIBERGLASS DUPLICATE

The mold for the fiberglass body was made directly from an original Model A Roadster, so it's an exact duplicate.

### 1979 DRIVETRAIN

The 1979 drivetrain is mounted on a frame to accommodate the body reproduction. The result is a 1979 car that is a perfect illusion of the 1928-29.

### PRICED FOR THE AVERAGE PERSON

For the first time, the fun of the reproduction car can be enjoyed by the average person, in the tradition of Henry Ford's original Model A and Model T. It is priced at less than half the price of any other Model A replica. And it preserves all of the 1928 design beauty inspired by Edsel Ford. "The most popular car ever made." The price is right. The design is right. And the team of Detroit design and engineering "pros" who blended the visible classic body and the unseen new drivetrain into this amazingly authentic replica were right for the task.

### LIMITED EDITION

All of the advantages to the buyer

of a genuine limited edition of a super-popular car are found in the Golden Anniversary Model A Roadster Reproduction.

They are built only to order. There will be no surplus. Production is scheduled to be stopped after one year, and production of a different classic Ford will follow the next year.

Production of this 1928-29 standard Roadster model will be limited to an average of one per Ford and Lincoln Mercury dealer (6,641). An additional 1,928 Deluxe models will be made (the quantity is the same as the original model year). A fewer number of super deluxe models will also be made. Some one-of-a-kind Custom models will be made, to the buyer's

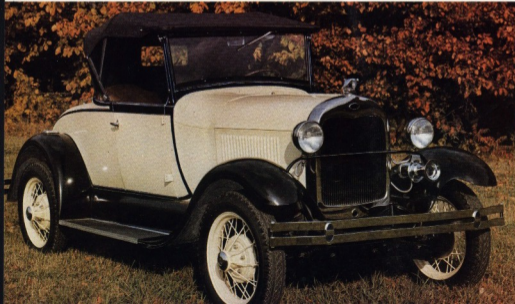
specifications. We hope you are lucky enough to get one.

### OPTIONS

Reproductions of most of the original 1928-29 options are available, including stripes, quad radiator ornament, rear mounted spare tire, windwings, etc. Such modern options as heater, radio, etc. are also available.

### COLORS

The standard color of the Golden Anniversary model is pale yellow body with black fenders and skirt. The color is imbedded in the fiberglass. Other colors are available as options. Enamel and hand-rubbed lacquer finish is also



available as an option.

## ORIGINAL FEATURES

In addition to the perfect body reproduction, all other essential original features are preserved. These include spoked wheels, centerpiece instrument cluster with gauges, stick-type gearshift, fold-up hood, vinyl seats and trim, etc.

## SERVICE & WARRANTY

The drivetrain is Ford and can be serviced by any Ford dealer. Although it is a 1979, much of the ordinary service is almost as easy as the original Model A. The recommended maintenance schedule is 10,000 miles or 12 months between scheduled oil changes and 30,000

miles between lubes.

Most of the other parts are name-brand and commonly available. Parts made by or for the Model A Reproduction Company are maintained in stock by the company for immediate shipment.

The reproduction is warranted for 12,000 miles or 12 months, as described in detail in the current warranty booklet.

## THE CHASSIS

The drive, suspension, steering and brakes are 1979 Ford. The engine is 2.3 litre, overhead cam, 4-cylinder, with DuraSpark ignition (no points). Transmission is floor mounted, fully synchronized, 4-speed manual. Front

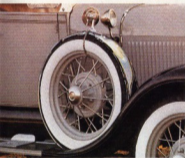
disc/rear drum brakes. Rock and pinion steering (it drives like it is equipped with power steering.) The Ford Fairmont steering column is used (it resembles the original). Hand-operated parking brake. Coil spring front suspension and parallel longitudinal leaf springs in the rear. 4 shock absorbers. Environmental controls.

The frame is similar to the Model A, with two side rails and several cross-members. It was redesigned to accommodate the 1979 drivetrain, and extended to the rear of the body to support the modern rear springs. To adapt the 1979 drivetrain to the 1928-29 body, the front suspension was moved forward of the engine, so the front "axle" is directly below

the radiator, which is essential to preserve the original design appearance of the Model A. The radiator is a duplicate of the original, except it is pressurized. The driveshaft length was revised to preserve the Model A wheelbase. The rated load of the springs was reduced because the reproduction is several hundred pounds less than the modern compact car. The length of the rear springs were reduced so they would not extend beyond the body.

## FACTORY

The company and main production facilities are located in Michigan. Another production plant will later be added on the West Coast.



Basic features on all models include: tenders and running board skirt, and creme (pale yellow) body. The top is grain textured black, and the interior grain-textured tan, similar to the original.

#### DELUXE MODEL

In addition to standard features, includes choice of first eight colors listed on this page, heater, AM-FM stereo radio, choice of stripes and trim color (similar to original paint trim), rear luggage rack and trunk, left fender side mounted on spare tire, dual radiator ornament, cowl gas cap, dual windshield wipers (left and right side), vinyl covered steering wheel cover, whitewall tires, wind wings, top hold down strap and hook, tinted glass, sun visors, interior light, cowl gas cap ornament, pleated seats, etc.

#### SUPER DELUXE

Includes all of the Deluxe features, plus choice of the eleven body colors, front and tumble

or cassette, dual side fender mounted spare tires (left and right), leather covered steering wheel, dual Ah-OOO-Gah horn (left and right), enlarged headlights (original size), stainless steel spoke covers, running board step plates, spare tire covers, stainless steel radiator stone guard, chrome instrument cluster, chrome fold-down windshield frame and stanchions, cigarette lighter, sculptured door inner panel with map pocket, carpeting, choice of 4-speed or automatic transmission, etc.

#### CUSTOM

Starts with the Super Deluxe and includes any special features desired to "personalize" it to your "Dream car". Minimum price to be rated "Custom" is \$32,500.

\*The company reserves the right to change specifications or terms of sale at any time without incurring obligations.



Suggested Retail Prices (F.O.B. Detroit, Dec. 1978)

STANDARD	\$5,950*
DELUXE	\$7,450*
SUPER DELUXE	\$8,950*
CUSTOM	\$12,500* (minimum)

#### STANDARD MODEL

Consists of the basic car described and shown in this brochure (not including the

## Colors

#### Colors - Body and Fender

Eleven colors listed below are imbedded in the fiberglass, and are similar to the Ford colors listed below.

- ☐ Creme (1979-82)
- ☐ Black (1979-1C)
- ☐ Dove Grey (1979-1N)
- ☐ Light Medium Blue (1979-3F)
- ☐ Light Chamais (1979-83)
- ☐ Light Emerald Green (1978-77) Lincoln Mercury
- ☐ Bright Red (1979-2P)
- ☐ Polar White (1979-9D)
- ☐ Tangerine (1979-85)
- ☐ Light Gold (1979-6W)
- ☐ Light Champagne (1979-5Z)

#### Colors - Enamel or Lacquer

Any Ford or Lincoln-Mercury color is available as an option in enamel or hand-rubbed lacquer.

#### Colors - Top and Interiors

- ☐ Black
- ☐ Tan
- ☐ White

## Optional Accessories

- ☐ Original Model A Steering Wheel
- ☐ Pinstriping
- ☐ Belt & Moulding color
- ☐ Heater
- ☐ Radio: AM
- ☐ Radio: AM-FM
- ☐ Radio: AM-FM Stereo
- ☐ Radio: AM-FM Tape Stereo
- ☐ Quail Radiator Ornament
- ☐ White Wall Tires
- ☐ Cowl Lights
- ☐ Rear Luggage Trunk Rack
- ☐ Rear Luggage Trunk
- ☐ Deluxe Rear Luggage Trunk
- ☐ Left Outside Mirror
- ☐ Right Outside Mirror
- ☐ Windwings
- ☐ Windshield Wiper (right hand)
- ☐ Top Hold-down Strap & Hook
- ☐ Right (Dual) Horn
- ☐ Enlarged Headlights
- ☐ Rumble Seat Heater
- ☐ Running Board Step Plate (Pair)
- ☐ Radiator Stone Guard
- ☐ Stainless Steel Spoke Covers (per wheel)
- ☐ Cigarette Lighter
- ☐ Fold-down, Chrome Windshield
- ☐ Door Map Pockets
- ☐ Carpeting
- ☐ Vinyl Steering Wheel Cover
- ☐ Leather Steering Wheel Cover
- ☐ Spare Tire & Tube, Blk. (not mounted)
- ☐ Spare Tire & Tube, W/W. (not mounted)
- ☐ Rear Mounted Spare Tire
- ☐ Air Conditioning
- ☐ C.B. Radio
- ☐ C.B. Radio with AM-FM Stereo & Tape
- ☐ Lift-off Fiberglass Top
- ☐ Nylon Cover for Car
- ☐ Imitation Gas Cap (on cowl)
- ☐ Imitation Gas Cap (Eagle)
- ☐ Boot to cover top

- ☐ Automatic Transmission
- ☐ Chrome Wheels
- ☐ Pleated Seats
- ☐ Color Keyed Dash
- ☐ Folding Landaui Bars
- ☐ Rear Tire Carrier
- ☐ Chrome Horn
- ☐ Dual Chrome Horn
- ☐ Interior Light
- ☐ Lipped Headlight Visor
- ☐ Etched Windwings
- ☐ Clock
- ☐ Tinted Glass
- ☐ Digital Clock
- ☐ Leather Top & Interior
- ☐ Windshield Washer (electric)
- ☐ Windshield Washer (hand pump)
- ☐ Rumble Seat Light
- ☐ Padded Dash
- ☐ Wood Dash (vinyl)
- ☐ Cruise Control
- ☐ Chrome Door Hinges
- ☐ Chrome Hood Latch
- ☐ Chrome Headlight Bar

Suggested Retail Price, December 1978, F.O.B. Detroit. License, State Taxes, Options, etc. not included. The current prices for models and options are available at your participating Ford or Lincoln-Mercury dealer, or by writing to:

The Model A & Model T Motor Car Reproduction Corporation  
Suite 1460, Tower 100, Renaissance Center, Detroit, MI 48243