

PONTIAC
Astre
FOR 1974



Astre Coupe

Superb! Far out! Right On! No matter how you say it, the reactions are the same when people first see the new Astre. Astre is 1974's exciting way for small car buyers to put it all together...solid Pontiac engineering, Wide-Track driveability and smooth uncluttered styling.

Astre '74 does it all, and does it the Pontiac way!

Lots of Pontiac in the little Astre. Sure, it's a little car, but Astre has many big Pontiac features like double-panel doors, hood, decklid, and roof. Even side-guard beams in the doors, for solid protection.

Economical, but Pontiac economy. Pontiac doesn't scrimp when it comes to economy. Look at the way it's engineered.



A tough 4-cylinder 2300 cc (140 CID) overhead-cam engine standard. And an even more powerful 2 bbl. option. Very economical to run, this lightweight aluminum-alloy engine block, is planned to give you all the jet-up-and-go you need.

Here inside, the standard Astre interior includes a choice of bright plaid cloth or knit vinyl trim. Flame Chestnut woodgrain adds a handsome touch to the instrument panel. Settle comfortably into

deep full-foam bucket seats, and enjoy yourself.

Astre Coupe, our lowest-priced Pontiac!



Cover: Astre Hatchback in Quebec City.
 Right: Astre Coupe equipped with the Salon Deluxe option that includes a vinyl top.
 Far right: Astre Coupe and Toronto skyline.

Some of the equipment shown or mentioned is optional at extra cost.



Astre Hatchback

The sleek low, front-end profile of the Astre Hatchback...the new shape of Pontiac economy for 1974. And from the rear, the real test of Hatchback versatility!

Astre Hatchback; mid-way between Coupe and Wagon. All the sportiness of Hatchback styling combined with the luggage carrying capacity of a wagon. There's 9.3 cu. ft. of stowage space in the rear, and by dropping the back seat down and away, you've got 18.9 cu. ft. of space, and 5½ ft. of unobstructed floor.

Big car convenience—sharp little Astre. Wide opening doors invite you in and help you out...gracefully! Even big people find



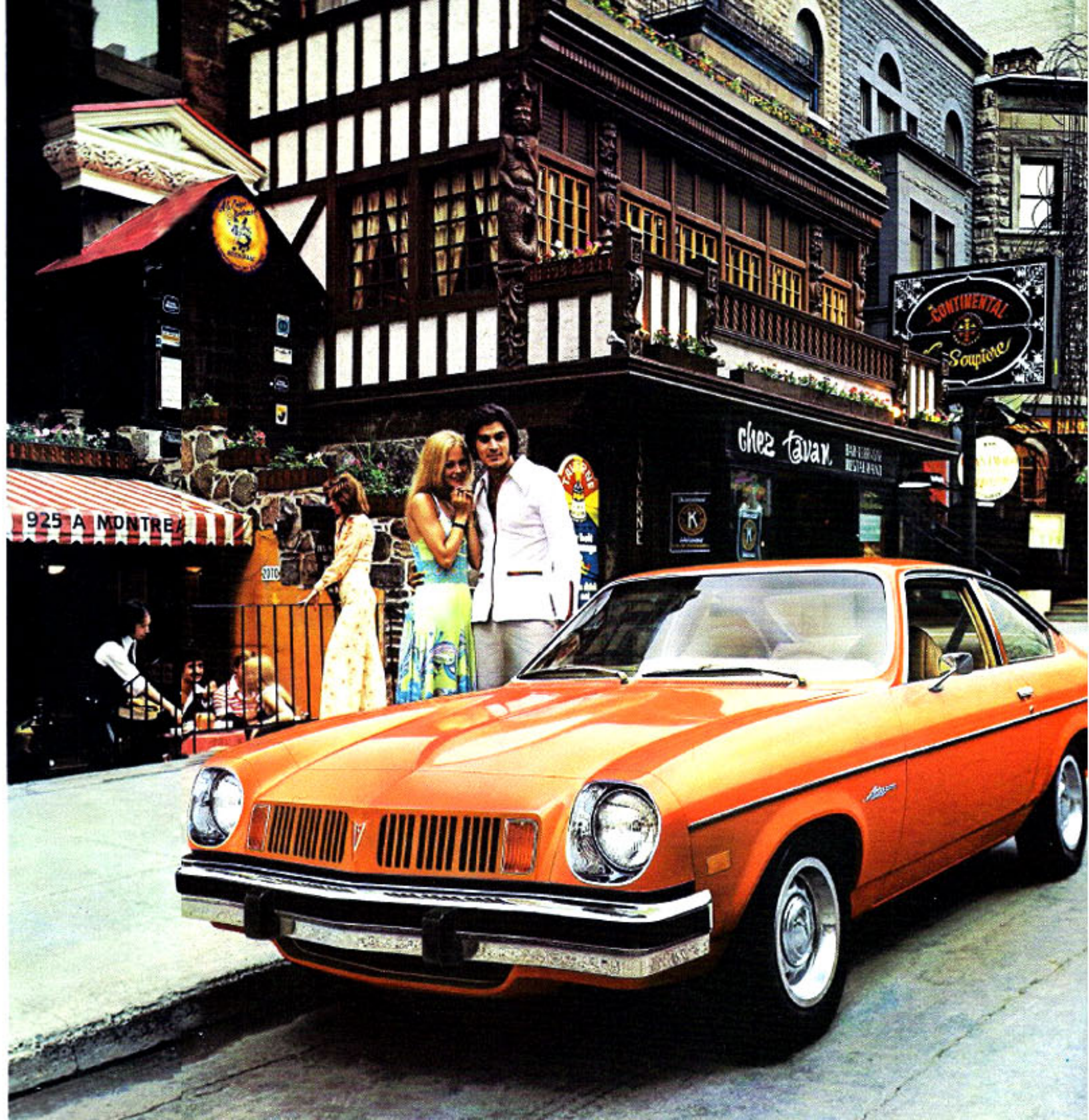
Astre roomy and comfortable to drive or just relax and travel in. The deep front bucket seats see to that. And there's virtually the same head and leg room up front in Astre as there is in many bigger cars.

Custom Interior. A dress-up package that gives your Astre a more personal touch. This optional interior includes a choice of corduroy-type cloth or all-vinyl trim, Custom steering wheel, instrument assist handle, day/night mirror, rear ashtrays, special insulation and more. For more information check Options on page 11.



Top: Astre Hatchback with Hutchback Tent Accessory.
Centre: Custom Interior.
Far right: Astre Hatchback swings in downtown Montreal.

Some of the equipment shown is optional or extra cost.



Astre Safari Wagon



Who says little wagons are lightweights in the load carrying department, and dull in the looks department? In this sharp little Astre Safari Wagon, you're blessed with a carpeted load floor that's a full 5½ ft. long and 3½ ft. wide. A full 50.2 cu. ft. of storage space. Even with the rear seat up, you still have 24.8 cu. ft. Need more? Order the optional roof rack, and don't forget to check the concealed storage area for small articles, (beside the spare tire).

Power Teams. Even with the back fully loaded, the standard 2300 cc engine gives you confident performance and acceleration. Or order the optional engine, for more power and virtually the same gas economy.

All Astres come with a 3-speed floor-mounted manual transmission or order a 4-speed manual

or a floor-mounted 3-speed automatic at extra-cost.

Extra style. To add a little extra styling to the exterior of your Safari Wagon, at only a little extra-cost, order woodgrain panelling down the sides and across the tailgate.

Safari Custom. This model includes an exterior/interior decor package that gives you the simulated woodgrain panelling, a Custom Interior trim, and more.



Right: Astre Safari Wagon, Astre Safari Custom at Lion's Gate Bridge, Vancouver.

Some of the equipment shown or mentioned is optional at extra cost.





Astre Hatchback GT and Astre Safari Wagon GT at High Falls, Ontario

Astre GT

The GT Option, an exciting combination of ride and handling, extra horsepower, special instrumentation, and appearance packages. It's really sporty, and available on the Hatchback, or Safari Wagon. The GT Option includes the high-performance 2300 cc 2-bbl. overhead-cam engine, special suspension with front and rear stabilizer bars, A70 x 13 white-lettered wide

oval tires, special gauge and instrument cluster which includes tach and clock, Custom Sport steering wheel, and much more. Want to add a stripe or two to your new GT? For 1974 there are two stripes available. They're really sharp and come in orange, white or black.



Astre GT instrument panel.

Some of the equipment shown or mentioned is optional at extra cost



Astre Panel

Our Business Astre. Built strong and dependable, the way a businessman needs his transportation. Like every Astre, the Panel has many Pontiac Family standard features; see standard features on pages 10 and 11.

Our little van has just one seat and there are two compartments hidden beneath the load floor. The driver's seat is full-foam, and comfortable all day long. And if

your business calls for two-people travel from time to time, just order a second seat up front (extra-cost option). The seats come in pearl only, with interior trims in green or black.

Our little business Astre really means business. A perfect panel delivery that's great on looks and tough under the hood. And Astre passes by gas stations where you were once a frequent customer.

Doing business with the Astre Panel



Some of the equipment shown or mentioned is optional at extra cost.

Standard Features



Astre Hatchback



Astre Coupe



Astre Safari



Astre Panel

Astre Standard Features:

2300 cc (140 cu. in.) four-cylinder engine; 3-speed manual floor shift; 13.3 gallon gas tank capacity; powered ventilation with air exit louvres in door pillars; bumpers of anodized aluminum; instrument panel glove compartment; folding rear seat (on Hatchback and Safari); concealed storage area beneath load floor (on Hatchback and Safari); unitized body construction; double panel doors, roof, hood and decklid; flush-and-dry rocker panels; bright metal hub caps with Pontiac emblem; tailgate moldings on Safari; molded plastic door and quarter panels; map pocket in driver's door; front disc brakes with audible wear sensor; cut-pile carpeting (mats in Panel); full-coil suspension; automatic choke; dual speed electric windshield washers and wipers; electric fuel pump; Delco energizer with side terminals; two-spoke steering wheel trimmed in soft vinyl; Flame Chestnut woodgrain applique on dash; simulated sail panel louvres on Coupes; bright roof drip moldings (ex. Panel); windshield-embedded antenna when you order a radio; all-vinyl or cloth and vinyl trim; engine coolant recovery system; exhaust and evaporative emission control systems; 15 exterior colors.

ASTRE SD

Salon Deluxe coupe.

All Astre standard equipment plus:

Cordova vinyl roof cover; bodyside protective moldings; side window frame moldings; wheel opening moldings; exterior body color door handle inserts; wheel decor; inside non-glare mirror; passenger door dome lamp switch; Custom Cushion steering wheel; adjustable front passenger seat; electric clock; additional sound insulation; SD Identification; instrument panel assist handle; Custom interior trim; bright grille and headlamp housing molding.

ASTRE GT

Available on Hatchback and Safari.

All standard Astre features plus:

High performance 2-bbl. engine; special suspension with front and rear stabilizer bars; A70 x 13 white-lettered wide oval tires; four-spoke styled wheels with trim rings; bright grille and headlamp housing molding; black painted headlamp bezels; special gauge instrument cluster and woodgrain trim; instrument panel assist handle; four-spoke vinyl-covered Custom Sport steering wheel; two position adjustable driver's seatback; Custom Sport remote control mirror with Custom interior; body color tape in door handle, GT identification; lower body side molding with black painted rocker; bright belt reveal molding on Hatchback Coupe.

ASTRE SAFARI CUSTOM

All Astre standard equipment plus:

Woodgrain bodyside panelling; wheel trim decor; Custom interior trim; Custom Cushion steering wheel; inside non-glare mirror; instrument panel assist handle; adjustable driver's seatback; passenger door dome lamp switch; rear seat ashtrays; door handle body color insert.

Reassurance Features

Occupant Protection

- Seat belts with pushbutton buckles for all passenger positions.
- Two front combination seat and shoulder belts for driver and right front passenger (with reminder light and buzzer and inertia reel).
- Two front seat head restraints (built into seatback).
- Energy-absorbing steering column.
- Passenger-guard door locks.
- Safety door latches and hinges.
- Folding seat back latches.
- Energy-absorbing padded instrument panel and front seat back tops.
- Contoured windshield header.
- Thick laminate windshield.
- Padded sun visors.
- Safety armrests.
- Safety steering wheel.
- Cargo Guard (coupe only).
- Side-Guard Beams.
- Contoured full roof inner panel.

Accident Prevention

- Side marker lights and reflectors (front side marker lights flash with directional signal).
- Parking lamps that illuminate with headlamps.
- Four-way hazard warning flasher.
- Backup lights.
- Lane change feature in direction signal control.
- Windshield defrosters, washer and dual speed wipers.
- Wide-view inside mirror (vinyl edged, shatter resistant glass and deflecting support).
- Outside rear view mirror.
- Dual-master cylinder brake system with warning light.
- Starter Safety Switch.
- Improved bumper systems.

Anti-Theft

- Anti-theft ignition key warning buzzer.
- Anti-theft steering column lock.
- Inside hood latch release.

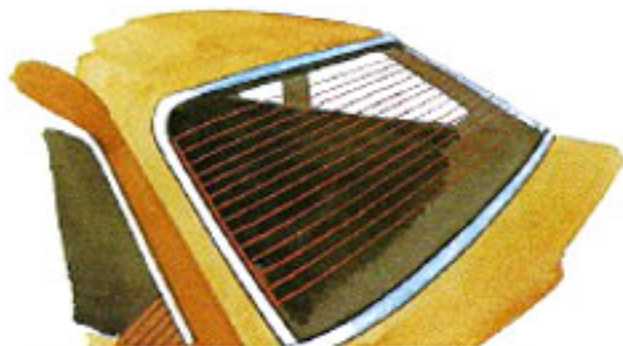
Options-Add your own personal touch

In addition to the Astre GT, Custom Interior and Custom Exterior and SD special packages, your salesman can suggest many individual extra-cost items. Here are a few.



Air Conditioning. The Four-Season system works all year to keep you in comfort and free of humidity, dust and irritating pollen. Sliding levers offer you full control.

Swing-Out Rear Side Windows. Only available on Coupe and Hatchback.

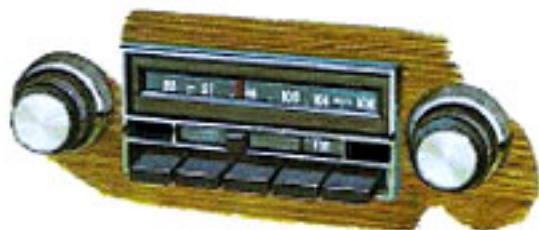


Defroster. Helps keep away mist and frost with electrically-heated wires in the rear window.

Air Deflector. Roof Rack. Two fine thoughts for the Safari and Panel.

Remote-Control Custom Sport Mirror. Left side only; comes in body color. Included in GT package with Custom Interior.

Radio. Order either AM or AM/FM pushbutton radio. And why not add a rear speaker? Factory-installed radio gets a hidden antenna.



Stripes. Your salesman can show you the 1974 accent and sports striping and explain availability.

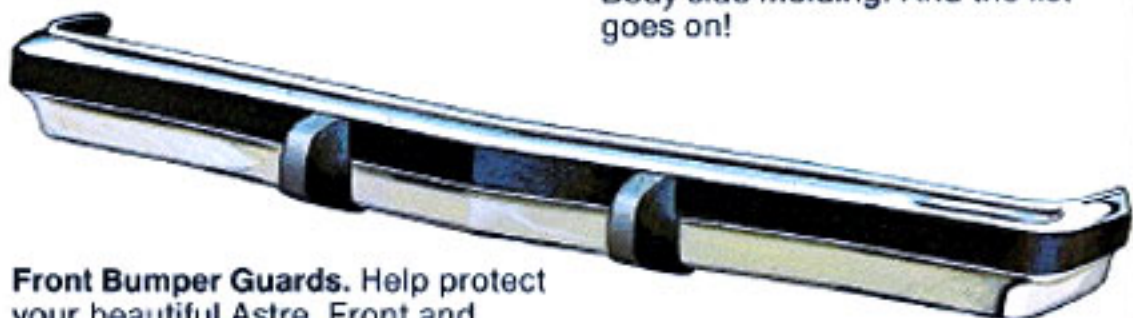
Spoiler. A rear deck lid air spoiler for the Hatchback may be specified.

Ride & Handling package. It gives you front and rear stabilizers and A70 x 13B bias-belted white-lettered tires, 13x6 wheels (included, GT).



Wheels. Directly above is the GT wheel with trim rings (included in GT package) which may be ordered separately. At top is the smart new Deluxe wheel cover (included in Astre SD and Safari Custom packages).

Tires. Four tire options include wide-ovals and steel-belted radials.



Front Bumper Guards. Help protect your beautiful Astre. Front and rear rub strips may also be added.



Infant and Child Love Seats. For babies up to 20 pounds, the Infant Love Seat is foam-padded, comfort-contoured, washable. A built-in harness comes with both Love Seats. Both have many special features to help look after little travellers.



Vinyl top. Cordova roof covers in a choice of 10 colors are available for the Coupe and Hatchback.

Other ideas. Tinted glass. Safe-T-Track axle. Block heater. Heavy-duty battery. Accent carpets. Body side molding. And the list goes on!

Specifications

DIMENSIONS

	HATCHBACK	COUPE	SAFARI	PANEL
Wheelbase	97.0 in.	97.0 in.	97.0 in.	97.0 in.
Overall Length	175.9 in.	175.9 in.	175.9 in.	175.9 in.
Height	50.0 in.	51.9 in.	52.0 in.	52.0 in.
Width	65.4 in.	65.4 in.	65.4 in.	65.4 in.
Tread Front	55.2 in.	55.2 in.	55.2 in.	55.2 in.
Rear	54.1 in.	54.1 in.	54.1 in.	54.1 in.
Turning diameter curb-to-curb	33.0 ft.	33.0 ft.	33.0 ft.	33.0 ft.
Road clearance	4.6 in.	4.6 in.	4.6 in.	4.6 in.
Curb Weight (approximate)	2539 lbs.	2458 lbs.	2587 lbs.	2473 lbs.
Headroom				
Front	37.4 in.	38.3 in.	38.4 in.	38.0 in.
Rear	36.6 in.	38.6 in.	37.7 in.	—
Legroom				
Front	42.3 in.	42.1 in.	42.1 in.	42.0 in.
Rear	30.4 in.	32.2 in.	32.8 in.	—
Hiproom				
Front	49.3 in.	49.2 in.	49.2 in.	49.2 in.
Rear	42.5 in.	42.5 in.	42.5 in.	—
Shoulder Room				
Front	51.6 in.	51.6 in.	51.6 in.	51.6 in.
Rear	49.5 in.	49.5 in.	49.5 in.	—
Usable Luggage Space	9.3 cu. ft.	8.7 cu. ft.	—	—
Total Cargo Volume				
(seat up)	—	—	24.8 cu. ft.	*68.7 cu. ft.
(seat down)	18.9 cu. ft.	—	50.2 cu. ft.	—

*60.2 with auxiliary seat

ENGINES

	140-1	140-2
Displacement:	140 cu. in.	140 cu. in.
HP @ RPM (S.A.E. net):	75 @ 4400	85 @ 4400
Torque (ft./lbs.) @ RPM (S.A.E. net):	115 @ 2400	122 @ 2400
Compression Ratio:	8.0:1	8.0:1
Carburetion:	1-bbl.	2-bbl.
Fuel:	Regular	Regular
Exhaust:	Single	Single

SPECIFICATIONS

Engines: Standard	140-1 bbl. Four
Optional	140-2 bbl. Four
Transmissions: Standard	3-speed manual
Optional	4-speed manual Turbo Hydra-matic
Brakes: Front Disc (dia.)	10.00 in.
Rear Drum (dia.)	9.00 in.
Suspension:	Full Coil
Body:	Unitized
Tires: Standard	A78 x 13
Wheel size:	13 x 5 in.
Fuel tank capacity:	13.3 Imp. Gal.

CARTER 

**Pontiac • Buick
Cadillac • GMC**

"Directly Across From Eaton's Brentwood Shopping Centre"
Longbeed at Willingdon, Burnaby 2, B.C.
Phone: 291-2266

The illustrations or descriptions in this catalogue do not necessarily show standard colors, materials and equipment. General Motors of Canada Limited reserves the right to make changes at any time without notice; in prices, colors, materials, equipment, specifications and models, and also to discontinue models. This right may be exercised without incurring any responsibility with regard to cars previously sold.



Canada

GENERAL MOTORS OF CANADA LIMITED, OSHAWA, ONTARIO