

# Camry

2014.5



Information Provided by:

**DEALER**  
E-PROCESS



SE

V6 shown in Attitude Black Metallic with available power tilt/slide moonroof.



Information Provided by:

**DEALER**  
E-PROCESS



**XLE**

V6 shown in Magnetic  
Gray Metallic.



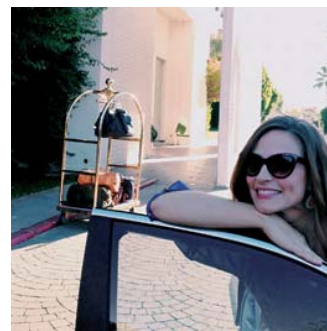
**HYBRID  
XLE**

shown in Barcelona Red  
Metallic with available  
Safety Connect.®1

See numbered footnotes in Disclosures section.

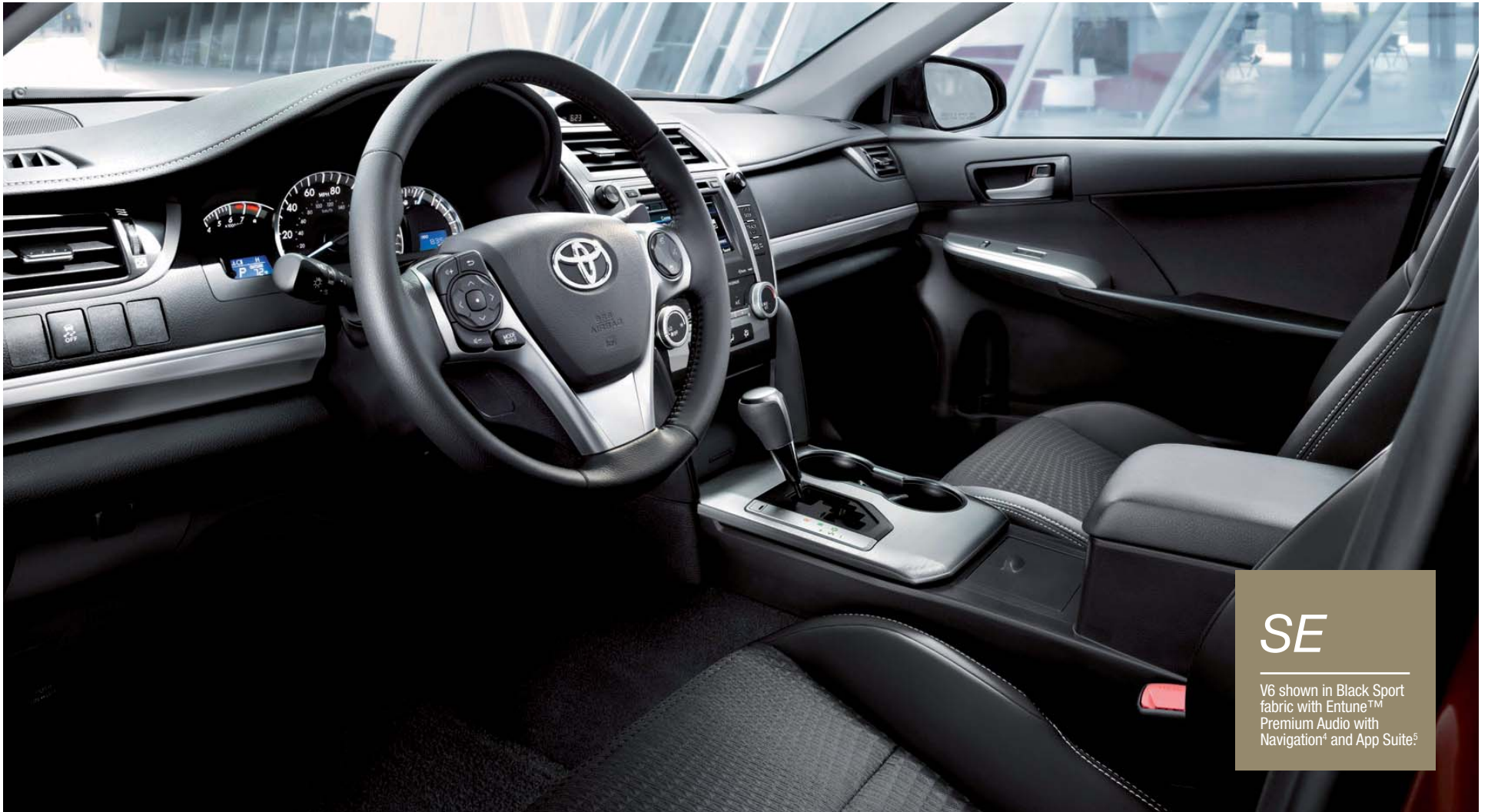
---

Camry is one exciting ride and has always been about more than just getting you to a destination. It's been about the fun of sharing and doing things together. Whether it's a dash to the desert, or getting the whole family together, Camry is eager to get going. Camry isn't just a thrilling ride, it's also one of the most reliable cars in America. In fact, over 90% of all Camrys sold over the last 10 years are still on the road today.<sup>2</sup> Some would call that legendary. Some would say it's time to take a break. We didn't; we kept going. The 2014.5 Toyota Camry continues to offer the high-end features, rewarding interior and impressive safety technology you have come to expect. We don't believe in sitting still, and we know our drivers feel the same way. Let's go places.



## An interior that outperforms expectations.

Let's make the interior of your car a place you want to spend some time: a space that is rewarding and enhances the driving experience. This is the inspiration behind the interior of every Camry. High-quality upholstery materials matched with refined stitching. A dashboard crafted with an attention to detail normally found in high-priced sedans. And on the XLE there are rich wood-grain-style accents. Let's make every time you drive a little more exciting, and rewarding. It's this type of dedication that makes Camry America's best-selling car.<sup>3</sup>



**SE**

V6 shown in Black Sport fabric with Entune™ Premium Audio with Navigation<sup>4</sup> and App Suite<sup>5</sup>

See numbered footnotes in Disclosures section.



## XLE

V6 shown in Ivory leather trim with available Entune™ Premium JBL® Audio with Navigation<sup>4</sup> and App Suite<sup>5</sup>

See numbered footnotes in Disclosures section.



XLE interior shown with available Entune™ Premium JBL® Audio with Navigation<sup>4</sup> and App Suite<sup>5</sup>



See numbered footnotes in Disclosures section.



# We're driving the automobile to new places.

Open up a world of possibilities with available technologies that inform, entertain and connect, plus navigation systems that give turn-by-turn directions on a color touch-screen. Entune™ is the complete audio display stack of your vehicle: It includes *Bluetooth*® wireless technology, advanced voice recognition,<sup>7</sup> a USB port,<sup>8</sup> an auxiliary audio jack and your display screen. With available Entune™ Audio Plus and Entune™ Premium Audio, get access to the App Suite,<sup>5</sup> a rich set of apps and data services.

## Entune™ Premium Audio

What you want, when you want it. On the available Premium Audio System, a “Low Fuel” station list appears on the 7-in. touch-screen and displays stations near you when you are low on fuel; HD predictive traffic makes getting to work and home easier than ever; and HD Doppler weather overlay gives you the latest weather. You can also customize or split your home screen to show various screens, while an available 90-day complimentary All Access trial of SiriusXM Radio<sup>9</sup> lets you listen to all the stations you want and the latest podcasts. Prefer your own tunes? Enjoy music from your personal library via *Bluetooth*® streaming;<sup>35</sup> CD or MP3.

## JBL® GreenEdge™ Audio System

Camry takes advantage of efficiencies wherever it can — and that goes for the audio system too. Using eco-conscious technologies, the available JBL® GreenEdge™ audio system delivers incredible sound with less power consumption.

## Entune® App Suite

Make connecting to the important things in life easier than ever with available Entune® App Suite. It uses your compatible mobile phone and *Bluetooth*® wireless technology or a USB cable to access apps and services and deliver them through the vehicle's audio system. Once connected, you can access Pandora®<sup>10</sup> and iHeartRadio for music, make restaurant reservations with OpenTable®, and buy movie tickets with MovieTickets.com. You can also check in at points of interest with Facebook Places and see reviews of local places with Yelp® Plus, get sports scores, stocks, traffic and weather—even a guide to the cheapest fuel. Visit [www.toyota.com/entune](http://www.toyota.com/entune) for availability of apps and services.



### FIRST-CLASS SEATING

In Camry, rear-seat comfort is just as important as front-seat comfort, so the shape of the front seats is designed to allow for additional knee space for rear-seat passengers.



### POSITIONED TO DRIVE

Adjustable a total of eight ways, Camry's available power-adjustable driver's seat gives you plush and fully customizable comfort.



XLE V6 interior shown in Ivory leather trim with available Entune™ Premium JBL® Audio with Navigation<sup>4</sup> and App Suite<sup>5</sup>; Smart Key System<sup>11</sup> and Safety Connect.<sup>91</sup>

See numbered footnotes in Disclosures section.

# A perfect blend of science and luxury.

Whether it's interior space or interior noise, volume has got a lot to do with driving comfort. So our engineers found a variety of clever ways to increase interior volume where it matters most. They also reduced noise, vibration and harshness throughout the vehicle for a quieter ride. When you pay attention to small details like these, the result is a car that does more than transport — it transcends.

## Room to Spare

Camry's interior has a space for everything, including your personal space. Lower door panels allow more knee room up front, and the headliner is made to maximize head room. Sun visors are positioned to maximize forward visibility to make sure nothing blocks your view of the world outside. All of this adds up to a spacious-feeling interior.

## Crafted Quiet

You hear that sound? We didn't think you could. That's because we've pinpointed areas where road and engine noise enter the cabin, and kept it out with sound-absorbing techniques that contribute to Camry's whisper-quiet ride.

## Ready Versatility

To help you transport longer items, such as skis or a new floor lamp, Camry's 60/40 split fold-down rear seat drops to create a handy pass-through into the trunk.

## Rewarding Luxury

Camry offers seats made with premium materials, a refined center stack and elegant stitching throughout the cabin.



## CUP HOLDERS

A place for everything, like your morning coffee. Camry's four cup holders and six bottle holders help keep spills to a minimum.



## Nothing helps steady the ride like a few bumps.

No, not the bumps on the road — those are easily handled by Camry's independent suspension. The bumps we're talking about are small, specially shaped bumps called vortex generators. Positioned at key points on the body, they help enhance control by smoothing airflow and reducing drag.

---

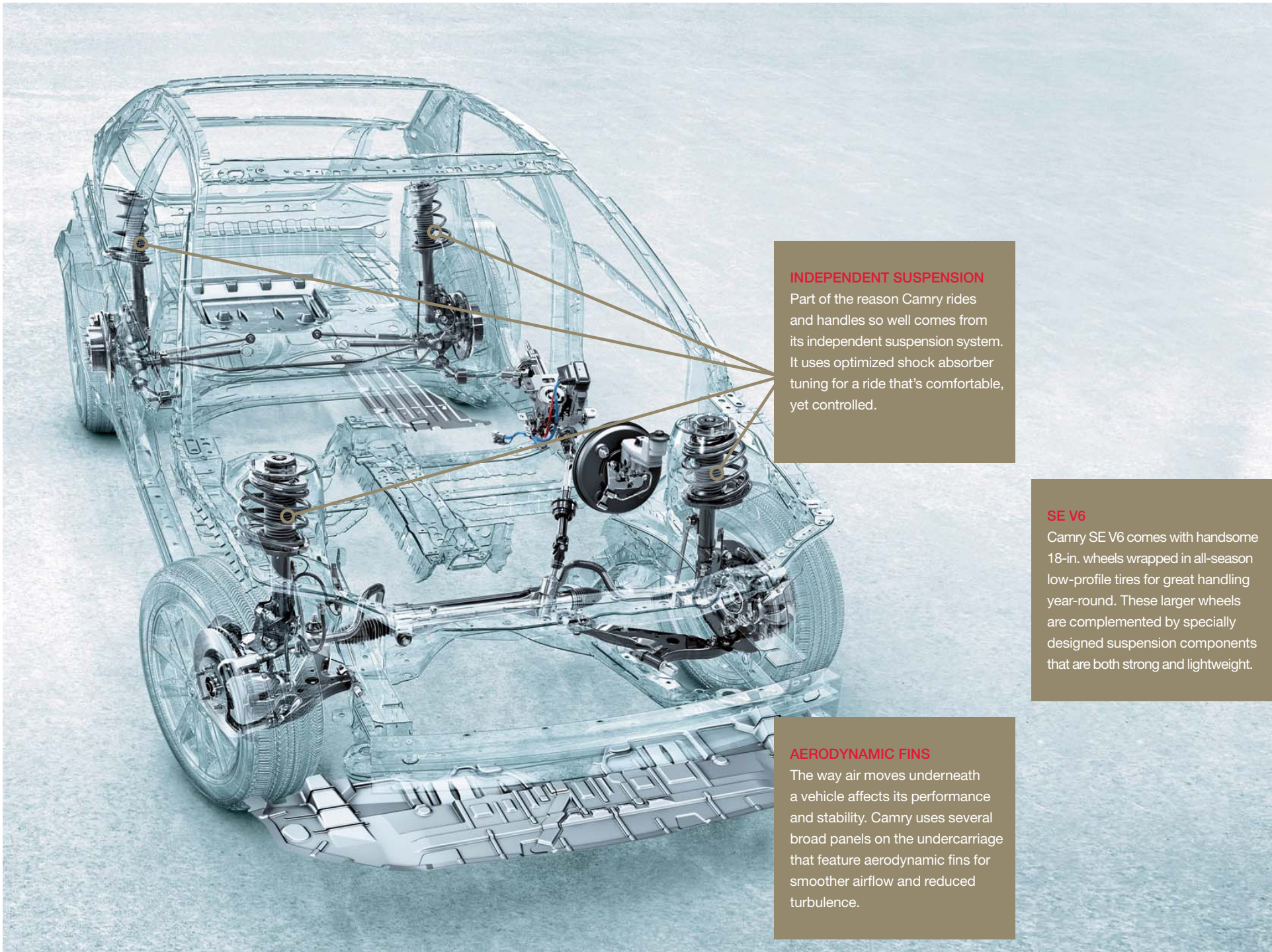
### HOW DO VORTEX GENERATORS WORK?

As air flows over the surface of a moving vehicle, it tumbles over and under itself, creating drag that slows you down. Vortex generators change the path of the air before it can become turbulent, reducing drag and improving vehicle stability.



Information Provided by:

**DEALER**  
E-PROCESS



**INDEPENDENT SUSPENSION**

Part of the reason Camry rides and handles so well comes from its independent suspension system. It uses optimized shock absorber tuning for a ride that's comfortable, yet controlled.

**SE V6**

Camry SE V6 comes with handsome 18-in. wheels wrapped in all-season low-profile tires for great handling year-round. These larger wheels are complemented by specially designed suspension components that are both strong and lightweight.

**AERODYNAMIC FINS**

The way air moves underneath a vehicle affects its performance and stability. Camry uses several broad panels on the undercarriage that feature aerodynamic fins for smoother airflow and reduced turbulence.

# Ready for whatever the future brings. Including corners.

Get behind the wheel of Camry SE, and there will be no doubt about its intentions. A leather-trimmed steering wheel with paddle shifters. Sport fabric SofTex®-trimmed seats and silver interior trim. This is clearly a driver's car — and while SE's focus is on performance, its technologically advanced engine choices won't make you pay extra at the pump. Add sport-tuned suspension to the mix, and you have an impressive blend of performance and efficiency.

## SE V6 Power

An available 3.5-liter V6 produces a pulse-quickenning 268 horsepower and 248 lb.-ft. of torque, while still offering an EPA-estimated rating of 31 highway mpg.<sup>12</sup> Paired with a 6-speed automatic transmission with sequential shift and paddle shifters, this powerplant delivers a driving experience that's nothing short of exhilarating.

## Paddle Shifters

Camry SE's race-inspired paddle shifters deliver real hands-on performance with a manual gear selection feature. Pull the right paddle to upshift and the left one to downshift — the system will even match revs during downshifting for smoother gear transitions and better control.

## Sport Handling

Handling dynamics typically involve the suspension — but in Camry SE, that's only part of the story. With a quicker steering ratio and an optimized Electric Power Steering (EPS) system that offers greater sensitivity, Camry is ready for every corner.

## 18-In. Alloy Wheels

Standard on Camry SE V6, these boldly styled wheels not only look great, they're also wrapped in low-profile all-season tires for improved handling.



See numbered footnotes in Disclosures section.



SE 4-cylinder shown in Barcelona Red Metallic with available Entune™ Premium Audio with Navigation<sup>4</sup> and App Suite<sup>5</sup>.

See numbered footnotes in Disclosures section.



## We took America's best-selling car<sup>3</sup> and went even farther.

How do you improve on America's best-selling car? We started by adding our proven Hybrid Synergy Drive<sup>®</sup> system that offers an EPA-estimated 43 city mpg, 39 highway mpg and 41 combined mpg rating.<sup>12</sup> Toyota Camry Hybrid's 2.5-liter 4-cylinder Atkinson-cycle engine delivers 156 horsepower—but when combined with the electric motor of the Hybrid Synergy Drive<sup>®</sup> system, total net horsepower jumps to 200, more power than any hybrid in its class.<sup>13</sup>



Hybrid XLE shown in Parisian Night Pearl with available power tilt/slide moonroof.

See numbered footnotes in Disclosures section.



### EFFICIENCY EXPERTS

For more than a decade, Toyota has led the way in the development of eco-sensitive technology with our advanced Hybrid Synergy Drive® system.

### ECO DRIVE LEVEL DISPLAY

Camry Hybrid's gauges provide you with all the feedback you need to drive efficiently, which helps you tailor your driving habits accordingly.



Hybrid XLE interior shown in available Ash Ultrasuede® with Entune™ JBL® Premium Audio with Navigation<sup>1</sup> and App Suite<sup>5</sup>

See numbered footnotes in Disclosures section.

### **ELECTRIC WATER PUMP**

An electric water pump doesn't require an engine-driven belt. This design not only improves efficiency, but also shortens engine warm-up time for reduced emissions.

### **LIGHTWEIGHT**

By engineering vehicle components and using state-of-the-art materials, mass was reduced as much as possible.

### **BELTLESS ENGINE**

Camry's hybrid engine is completely free of engine drive belts. This design is not only more reliable, but also saves weight, reduces friction and helps improve fuel economy.

### **ADVANCED HYBRID ENGINE TECHNOLOGY**

The engine in Camry Hybrid uses a variety of technologies that enhance performance and fuel economy. Like all Toyota engines, it uses four valves per cylinder and Variable Valve Timing with intelligence (VVT-i), a valve control system that optimizes engine efficiency throughout its operating range. But it also employs what is known as the Atkinson cycle, a method of controlling intake valve timing for reduced pumping losses. Add lightweight components and low-friction coatings, and the result is an eco-sensitive powerhouse that sacrifices nothing in the way of performance.

### **EFFICIENCY IN SPACE**

You won't find the hybrid battery unless you're looking for it. That's because it's neatly packaged in an area ahead of the trunk but behind the seats, so it doesn't take up usable space.



Information Provided by:

**DEALER**  
E-PROCESS

## Higher blue-sky thinking. (The power of efficiency.)

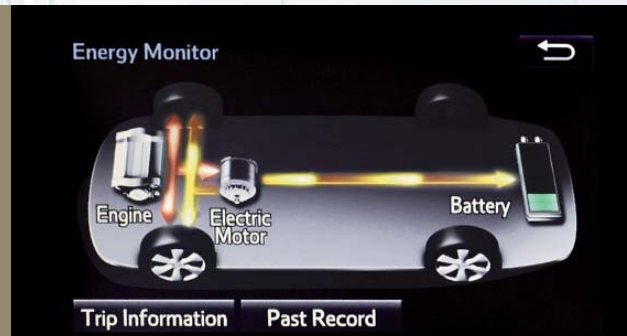
High efficiency and low emissions aren't the only measures of how far our hybrids have come. Camry Hybrid's engine also produces 200 horsepower — that's good for a 0-60 time of just 7.6 seconds.<sup>14</sup> This performance is accomplished by producing less noise, vibration and harshness, further enhancing the refined driving experience Camry is known for.

### LOWER ROLLING RESISTANCE

The use of specially designed tires allows the air pressure to be increased, which reduces rolling resistance and helps improve efficiency.

### ENERGY MONITOR

The Multi-Information Display helps keep you continually informed of the Hybrid Synergy Drive<sup>®</sup> energy flow and its efficient management.



See numbered footnotes in Disclosures section.

## We took a hard look at blind spots.

Being aware of what's around you not only helps increase confidence, but safety as well. The 2014.5 Camry offers technologies like the available Blind Spot Monitor (BSM)<sup>15, 16</sup> with Rear Cross-Traffic Alert (RCTA)<sup>17</sup> and a standard backup camera.<sup>18</sup>



Hybrid XLE shown in Cypress Pearl with available BSM with RCTA.

See numbered footnotes in Disclosures section.

**AVAILABLE BLIND SPOT MONITOR (BSM)<sup>15, 16</sup>**

Camry is available with a Blind Spot Monitor (BSM) featuring Rear Cross-Traffic Alert (RCTA). If BSM detects a vehicle, it illuminates a warning indicator on the appropriate sideview mirror to help you know when it's safe to change lanes.



**STANDARD BACKUP CAMERA<sup>18</sup>**

When backing up, the area behind Camry that's visible to the camera is displayed on the touch-screen of the audio system's display.



**REAR CROSS-TRAFFIC ALERT (RCTA)<sup>17</sup>**

RCTA works in a similar way to BSM, except that it alerts you to rear cross traffic with both visual and audible warnings. RCTA uses radar to detect vehicles that may be approaching from either direction as you back out of a parking space.



**AVAILABLE SMART KEY SYSTEM<sup>11</sup>**

Smart Key is a wonderful convenience. When you approach Camry with the Smart Key fob in your pocket or purse, the interior illuminates automatically; the doors unlock when you touch either front door handle; the trunk opens with the touch of its handle; and the engine starts with the push of a button.



**safetyconnect<sup>®1, 16</sup>**

With help from our 24/7 call center, available Safety Connect<sup>®</sup> offers subscribers helpful features such as Emergency Assistance, Stolen Vehicle Locator, Roadside Assistance and Automatic Collision Notification. Safety Connect<sup>®</sup> also offers the reliability of embedded cellular and GPS technology.



See numbered footnotes in Disclosures section.

*We equipped Camry with an array of active safety systems to help keep you out of harm's way and passive safety systems to help protect you should a collision occur.*

#### **SMART STOP TECHNOLOGY® (SST)<sup>19</sup>**

At speeds greater than five miles per hour, when the accelerator is depressed first and the brakes are then applied firmly for longer than one-half second, SST is designed to help the driver bring the vehicle to a stop.

## **Prepared for any circumstance.**

Camry comes standard with a comprehensive airbag system equipped with ten airbags:<sup>20</sup> The system includes both driver and front passenger airbags, front and rear side curtain airbags, front and rear seat-mounted side airbags, and both driver and front passenger knee airbags.

### **Star Safety System™**

Toyota's Star Safety System™ is an advanced suite of six safety features included as standard equipment on every Camry. The system includes Enhanced Vehicle Stability Control (VSC);<sup>21</sup> Traction Control (TRAC), Anti-lock Brake System (ABS), Electronic Brake-force Distribution (EBD), Brake Assist (BA)<sup>22</sup> and Smart Stop Technology® (SST).<sup>19</sup>



Photo not intended to replicate actual inflated airbags.

See numbered footnotes in Disclosures section.

### 1 CRUMPLE ZONES

An important element of occupant protection, crumple zones are structurally engineered to absorb and dissipate energy in the event of a collision by a process known as controlled deformation.

### 2 DRIVER AND FRONT PASSENGER WHIPLASH-INJURY-LESSENING (WIL)<sup>23</sup> SEATS

Camry's front seats are engineered to yield in a controlled fashion in certain rear-end collisions, helping to reduce the risk of neck injuries.

### 3 LATCH

LATCH (Lower Anchors and Tethers for CHildren) provides an added measure of safety for the smaller members of your family. LATCH includes lower anchors on the outboard rear seats and tether anchors on all rear seats.

### 4 TIRE PRESSURE MONITOR SYSTEM (TPMS)<sup>24</sup>

Proper tire pressure is always important for safe driving. TPMS evaluates the pressure of the tires and issues a warning if the pressure becomes critically low.

### 5 3-POINT SEATBELTS

Camry provides 3-point seatbelts for all seating positions. The front seats are also equipped with the added safety of pretensioners and force limiters.



Photo not intended to replicate actual inflated airbags.

See numbered footnotes in Disclosures section.

## Camry Models

### L



#### Powertrain

- 2.5L 4-Cylinder Engine with 178 hp @ 6000 rpm<sup>25</sup>
- 25 city/35 hwy/28 combined est. mpg<sup>12</sup>
- 6-speed automatic transmission

#### Exterior Features

- 16-in. steel wheels with wheel covers
- Projector-beam halogen headlights
- Color-keyed power outside mirrors with manual folding feature

#### Interior Features

- Backup camera<sup>18</sup>
- Fabric-trimmed seats; 6-way adjustable driver's seat; 4-way adjustable front passenger seat; 60/40 split fold-down rear seat
- Tilt/telescopic steering wheel with audio and Bluetooth<sup>®6</sup> hands-free phone controls
- Power windows with driver-side auto up/down
- One 12V auxiliary power outlet
- Two front and two rear cup holders; two front door and four rear door bottle holders
- Cruise control
- Entune™ Audio — includes the Entune™ Multimedia Bundle<sup>26</sup> (6.1-in. touch-screen display, AM/FM CD player, six speakers, auxiliary audio jack, USB 2.0 port<sup>8</sup> with iPod<sup>®27</sup> connectivity and control, advanced voice recognition<sup>7</sup>, hands-free phone capability, phone book access and music streaming via Bluetooth<sup>®6</sup> wireless technology)

### LE

Adds to or replaces features offered on L



#### Powertrain

- 2.5L 4-Cylinder Engine with 178 hp @ 6000 rpm<sup>25</sup>
- 25 city/35 hwy/28 combined est. mpg<sup>12</sup>
- 6-speed automatic transmission

#### Exterior Features

- Projector-beam halogen headlights with auto on/off feature
- Side rocker panels with chrome inserts

#### Interior Features

- Remote keyless entry system
- Power door locks with automatic locking feature
- Two 12V auxiliary power outlets
- Cruise control

### SE / SE Sport

Adds to or replaces features offered on LE



#### Powertrain

- 2.5L 4-Cylinder Engine with 178 hp @ 6000 rpm;<sup>25</sup> 25 city/35 hwy/28 combined est. mpg<sup>12</sup> (includes SE Sport)
- 3.5L V6 Engine with 268 hp @ 6200 rpm (not available on SE Sport); 21 city/31 hwy/25 combined est. mpg<sup>12</sup>
- 6-speed automatic transmission

#### Exterior Features

- 17-in. alloy wheels
- 18-in. alloy wheels (Sport and V6 only)
- Projector-beam halogen headlights with black sport trim bezels and auto on/off feature
- Power tilt/slide moonroof (Sport only)
- Integrated fog lights
- Sport mesh front grille
- Integrated front and rear underbody spoilers and sport side rocker panels
- Heated power outside mirrors with manual folding feature
- Color-keyed rear spoiler
- Chrome-tipped exhaust (dual on V6)

#### Interior Features

- Leather-trimmed tilt/telescopic sport steering wheel with paddle shifters, and Bluetooth<sup>®6</sup> hands-free phone and audio controls
- 4-Cyl. — Sport fabric SofTex<sup>®</sup>-trimmed front seats; 6-way adjustable driver's seat; 4-way adjustable front passenger seat
- Sport and V6 — Sport fabric SofTex<sup>®</sup>-trimmed front seats; 8-way power-adjustable driver's seat with power lumbar support; 4-way adjustable front passenger seat
- Acoustic noise-reducing front windshield (V6 only)

- Entune™ Premium Audio with Navigation<sup>4</sup> and App Suite<sup>5</sup> — includes the Entune™ Multimedia Bundle<sup>26</sup> (6.1-in. high-resolution touch-screen with split-screen display, AM/FM CD player, ten speakers, auxiliary audio jack, USB 2.0 port<sup>8</sup> with iPod<sup>®27</sup> connectivity and control, advanced voice recognition<sup>7</sup>, hands-free phone capability, phone book access and music streaming via Bluetooth<sup>®6</sup> wireless technology), HD Radio,<sup>TM28</sup> HD predictive traffic and Doppler weather overlay, AM/FM cache radio, SiriusXM Radio<sup>9</sup> with 90-day All Access trial, and Gracenote<sup>®</sup> music features (V6 only)

See numbered footnotes in Disclosures section.



# XLE

Adds to or replaces features offered on LE



## Powertrain

- 2.5L 4-Cylinder Engine with 178 hp @ 6000 rpm;<sup>25</sup> 25 city/35 hwy/28 combined est. mpg<sup>12</sup>
- 3.5L V6 Engine with 268 hp @ 6200 rpm; 21 city/31 hwy/25 combined est. mpg<sup>12</sup>
- 6-speed automatic transmission

## Exterior Features

- 17-in. alloy wheels
- Power tilt/slide moonroof
- Integrated fog lights
- Chrome-tipped exhaust (dual on V6)

## Interior Features

- Dual zone automatic climate control and rear vents
- Leather-trimmed tilt/telescopic 4-spoke steering wheel
- Wood-grain-style interior trim
- Acoustic noise-reducing front windshield (V6 only)
- 4-Cyl. — Fabric-trimmed front seats; 8-way power-adjustable driver's seat with power lumbar support; 4-way adjustable front passenger seat
- V6 — Leather-trimmed multi-stage heated front seats; 8-way power-adjustable driver's seat with power lumbar support; 4-way power-adjustable front passenger seat
- HomeLink<sup>®29</sup> universal transceiver (V6 only)
- Auto-dimming rearview mirror with compass (V6 only)
- Entune™ Audio Plus — includes the Entune™ Multimedia Bundle<sup>26</sup> (6.1-in. high-resolution touch-screen display, AM/FM CD player, MP3/WMA playback capability, auxiliary audio jack, USB 2.0 port<sup>8</sup> with iPod<sup>®27</sup> connectivity and control, advanced voice recognition,<sup>7</sup> hands-free phone capability, phone book access and music streaming via Bluetooth<sup>®6</sup> wireless technology), SiriusXM Radio<sup>9</sup> with 90-day All Access trial, HD Radio,<sup>TM28</sup> HD traffic and weather in major metro areas (4-Cyl.)

- Entune™ Premium Audio with Navigation<sup>4</sup> and App Suite<sup>5</sup> — includes the Entune™ Multimedia Bundle<sup>26</sup> (6.1-in. high-resolution touch-screen with split-screen display, AM/FM CD player, ten speakers, auxiliary audio jack, USB 2.0 port<sup>8</sup> with iPod<sup>®27</sup> connectivity and control, advanced voice recognition,<sup>7</sup> hands-free phone capability, phone book access and music streaming via Bluetooth<sup>®6</sup> wireless technology), HD Radio,<sup>TM28</sup> HD predictive traffic and Doppler weather overlay, AM/FM cache radio, SiriusXM Radio<sup>9</sup> with 90-day All Access trial, and Gracenote<sup>®</sup> music features (V6 only)

## Camry Hybrid Models

# Hybrid LE



## Powertrain

- Hybrid Engine: 2.5L 4-Cylinder with hybrid system net power: 200 hp (149 kW)
- 43 city/39 hwy/41 combined est. mpg<sup>12</sup>
- Continuously Variable Transmission, EV<sup>30</sup> and ECO Modes

## Exterior Features

- 16-in. steel wheels with wheel covers
- Acoustic noise-reducing front windshield
- Smart Key System<sup>11</sup> on front doors and trunk with Push Button Start

## Interior Features

- Backup camera<sup>18</sup>
- Dual zone automatic climate control
- Multi-Information Display
- Fabric-trimmed seats; 6-way adjustable driver's seat; 4-way adjustable front passenger seat; fold-down rear seat with pass-through
- Tilt/telescopic steering wheel with audio and Bluetooth<sup>®6</sup> hands-free phone controls
- Power windows with driver-side auto up/down
- One 12V auxiliary power outlet
- Two front and two rear cup holders; two front door and four rear-door bottle holders
- Cruise control
- Entune™ Audio — includes the Entune™ Multimedia Bundle<sup>26</sup> (6.1-in. touch-screen display, AM/FM CD player, six speakers, auxiliary audio jack, USB 2.0 port<sup>8</sup> with iPod<sup>®27</sup> connectivity and control, advanced voice recognition,<sup>7</sup> hands-free phone capability, phone book access and music streaming via Bluetooth<sup>®6</sup> wireless technology)

# Hybrid XLE

Adds to or replaces features offered on Hybrid LE



## Powertrain

- Hybrid Engine: 2.5L 4-Cylinder with hybrid system net power: 200 hp (149 kW)
- 40 city/38 hwy/40 combined est. mpg<sup>12</sup>
- Continuously Variable Transmission, EV<sup>30</sup> and ECO Modes

## Exterior Features

- 17-in. alloy wheels
- Integrated fog lights
- Heated power outside mirrors with manual folding feature
- Chrome-tipped exhaust

## Interior Features

- 8-way power-adjustable driver's seat with power lumbar support
- Auto-dimming rearview mirror with compass
- Leather-trimmed tilt/telescopic 4-spoke steering wheel
- Rear-seat vents
- Two 12V auxiliary power outlets
- Entune™ Audio Plus — includes the Entune™ Multimedia Bundle<sup>26</sup> (6.1-in. high-resolution touch-screen display, AM/FM CD player, MP3/WMA playback capability, auxiliary audio jack, USB 2.0 port<sup>8</sup> with iPod<sup>®27</sup> connectivity and control, advanced voice recognition,<sup>7</sup> hands-free phone capability, phone book access and music streaming via Bluetooth<sup>®6</sup> wireless technology), SiriusXM Radio<sup>9</sup> with 90-day All Access trial, HD Radio,<sup>TM28</sup> HD traffic and weather in major metro areas

See numbered footnotes in Disclosures section.

Color/Trim/Wheels\*

Color



Attitude Black Metallic



Parisian Night Pearl



Cypress Pearl



Barcelona Red Metallic



Crème Brulee Mica



Magnetic Gray Metallic



Cosmic Gray Mica



Classic Silver Metallic



Super White

Trim



L, LE and XLE fabric shown in Ash

Also available in

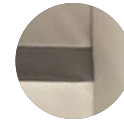


Ivory



XLE leather trim shown in Ash

Also available in



Ivory



SE and SE Sport fabric shown in Black

Also available in

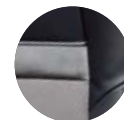


Black/Ash



SE leather and Ultrasuede® shown in Black/Black

Also available in



Black/Ash

Wheels



L and LE 16-in. steel wheel with wheel cover



XLE 17-in. alloy wheel



SE 4-Cyl. 17-in. alloy wheel



SE V6 and SE Sport 18-in. alloy wheel

\*Not all colors and trims available on all model grades. See dealer for details.

Hybrid Color/Trim/Wheels\*

# Color



Attitude Black Metallic



Parisian Night Pearl



Cypress Pearl



Barcelona Red Metallic



Crème Brulee Mica



Magnetic Gray Metallic



Cosmic Gray Mica



Classic Silver Metallic



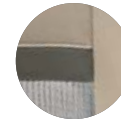
Super White

# Trim



Hybrid LE and Hybrid XLE fabric shown in Light Gray

Also available in

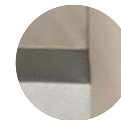


Ivory



Hybrid XLE leather and Ultrasuede® shown in Light Gray

Also available in



Ivory

# Wheels



Hybrid LE 16-in. steel wheel with wheel cover



Hybrid XLE 17-in. alloy wheel

\*Not all colors and trims available on all model grades. See dealer for details.

## Accessories

Genuine Toyota Accessories make driving your Camry even more fun. Now your Camry can reflect your personal style with items for the interior and the exterior. No matter your preference, there is something for everyone.

17-in. liquid-metal finish wheels  
Alloy wheel locks  
All-weather floor mats<sup>31</sup>  
Ashtray cup  
Body side moldings

Cargo net – envelope<sup>32</sup>  
Cargo tote<sup>32</sup>  
Cargo tray  
Carpet floor mats<sup>31</sup>  
Carpet trunk mat

Door edge guards  
Doorsill enhancements  
Emergency assistance kit  
First aid kit  
Glass Breakage Sensor (GBS)<sup>33</sup>

Illuminated doorsills  
Mudguards  
Paint protection film  
Rear bumper appliqué  
Rear spoiler

Remote Engine Starter  
RS3200+ Vehicle Security System<sup>34</sup>



Alloy wheels



Body side moldings



Illuminated doorsills



All-weather floor mats<sup>31</sup>



Remote Engine Starter



Rear spoiler

## Packages and Options

### L

- No options

### LE

- 8-way power-adjustable driver's seat
- Power tilt/slide moonroof (requires 8-way power-adjustable driver's seat and Entune™ Audio Plus)
- Entune™ Audio Plus (requires 8-way power-adjustable driver's seat)

### SE 4-Cyl.

- 8-way power-adjustable driver's seat
- Power tilt/slide moonroof (requires 8-way power-adjustable driver's seat)
- Entune™ Premium Audio with Navigation<sup>3</sup> and App Suite<sup>4</sup> (requires 8-way power-adjustable driver's seat)
- Convenience Package includes
  - Auto-dimming rearview mirror with compass
  - HomeLink<sup>®29</sup> universal transceiver
  - Anti-theft system with alarm
  - Smart Key System<sup>11</sup> with Push Button Start (requires power tilt/slide moonroof, and Entune™ Premium Audio with Navigation<sup>4</sup> and App Suite<sup>5</sup>)
- Leather Package (requires Convenience Package)
- Blind Spot Monitor<sup>15</sup> with Rear Cross-Traffic Alert<sup>17</sup> (requires Leather Package)

### SE SPORT

- Entune™ Premium Audio with Navigation<sup>4</sup> and App Suite<sup>5</sup>

### SE V6

- Power tilt/slide moonroof (requires Convenience Package)
- Convenience Package includes
  - Auto-dimming rearview mirror with compass
  - HomeLink<sup>®29</sup> universal transceiver
  - Anti-theft system with alarm (requires power tilt/slide moonroof)
- Leather Package and
- Entune™ Premium JBL® Audio with Navigation<sup>4</sup> and App Suite<sup>5</sup> and
- Blind Spot Monitor<sup>15</sup> with Rear Cross-Traffic Alert<sup>17</sup> (requires Convenience Package)

### XLE 4-Cyl.

- Entune™ Premium Audio with Navigation<sup>4</sup> and App Suite<sup>5</sup> (requires Convenience Package)
- Convenience Package includes
  - Auto-dimming rearview mirror with compass
  - HomeLink<sup>®29</sup> universal transceiver
  - Anti-theft system with alarm
  - Smart Key System<sup>11</sup> with Push Button Start (requires Entune™ Premium Audio with Navigation<sup>4</sup> and App Suite<sup>5</sup> or Leather Package)
- Leather Package (requires Convenience Package)
- Blind Spot Monitor<sup>15</sup> with Rear Cross-Traffic Alert<sup>17</sup> (requires Leather Package)
- Entune™ Premium JBL® Audio with Navigation<sup>4</sup> and App Suite<sup>5</sup> and Safety Connect<sup>®1</sup> (requires Blind Spot Monitor<sup>15</sup> with Rear Cross-Traffic Alert<sup>17</sup>)

### XLE V6

- Blind Spot Monitor<sup>15</sup> with Rear Cross-Traffic Alert<sup>17</sup>
- Entune™ Premium JBL® with Navigation<sup>4</sup> and App Suite<sup>5</sup> and Safety Connect<sup>®1</sup> (requires Blind Spot Monitor<sup>15</sup> with Rear Cross-Traffic Alert<sup>17</sup>)

### Hybrid LE

- No options

### Hybrid XLE

- Convenience Package includes
  - HomeLink<sup>®29</sup> universal transceiver
  - Anti-theft system with alarm
- Entune™ Premium Audio with Navigation<sup>4</sup> and App Suite<sup>5</sup> (requires Convenience Package and Leather Package or power tilt/slide moonroof)
- Power tilt/slide moonroof (requires Entune™ Premium Audio with Navigation<sup>4</sup> and App Suite<sup>5</sup>)
- Leather Package (requires power tilt/slide moonroof)
- Blind Spot Monitor<sup>15</sup> with Rear Cross-Traffic Alert<sup>17</sup> (requires Leather Package)
- Entune™ Premium JBL® Audio with Navigation<sup>4</sup> and App Suite<sup>5</sup> and Safety Connect<sup>®1</sup> (requires Blind Spot Monitor<sup>15</sup> with Rear Cross-Traffic Alert<sup>17</sup>)

See numbered footnotes in Disclosures section.

## CARS BUILT FOR THE WAY YOU LIVE

At Toyota, we build cars for how you live. From building advanced safety features designed to help prevent crashes to driving cross-country to understand how we can make your driving experience better, our work starts with understanding your needs. Building cars for how you live also means thinking about tomorrow—from fuel efficiency and environmental innovations, to things beyond cars, like a bicycle that you can control with your mind. And because what we learn building cars can help improve lives in other places, we do things like help communities rebuild their homes quickly after a disaster and work with soup kitchens to help them serve more people faster. Toyota. Built for how you live. Together we are going places.

## DISCLOSURES

1. Contact with the Safety Connect® response center is dependent upon cellular connection availability and GPS satellite signal reception, which can limit the ability to reach the response center or receive emergency service support. Enrollment and Subscription Service Agreement required. One-year trial subscription available only with new vehicle purchase of Safety Connect®-equipped vehicles. Additional subscription terms available; charges vary by subscription term selected. 2. Based on Polk U.S. Vehicles In Operation registration statistics MY 2003-2012 as of October 2012. Includes Camry Solara. 3. Based on manufacturer estimates, CY 2012 sales. 4. Be sure to obey traffic regulations and maintain awareness of road and traffic conditions at all times. Availability and accuracy of the information provided by the navigation system is dependent upon many factors. Use common sense when relying on information provided. Services and programming subject to change. Services not available in every city or roadway; updates may be available at an additional cost from your dealer. See your *Navigation System Owner's Manual* for details. 5. Be sure to obey traffic regulations and maintain awareness of road and traffic conditions at all times. Apps/services vary by phone/carrier; functionality depends on many factors. Select apps use large amounts of data; you are responsible for charges. Apps and services subject to change. See [toyota.com/entune](http://toyota.com/entune) for details. 6. Concentrating on the road should always be your first priority while driving. Do not use the hands-free phone system if it will distract you. The *Bluetooth®* word mark and logos are registered trademarks owned by Bluetooth SIG, Inc. and any use of such marks by Toyota is under license. A compatible *Bluetooth®*-enabled phone must first be paired. Phone performance depends on software, coverage and carrier. 7. Advanced voice recognition capabilities vary by head unit. 8. May not be compatible with all mobile phones, MP3/WMA players and like models. 9. SiriusXM services require a subscription after 90-day trial period. **Subscriptions governed by SiriusXM Customer Agreement available at [www.siriusxm.com](http://www.siriusxm.com). If you decide to continue your SiriusXM service at the end of your complimentary trial, the plan you choose will automatically renew and bill at then-current rates until you call 1-866-635-2349 to cancel.** Fees and programming subject to change. Available only to those at least 18 years of age in the 48 contiguous United States and D.C. 10. PANDORA® the PANDORA® logo, and the Pandora trade dress are trademarks or registered trademarks of Pandora Media, Inc., used with permission. 11. The Smart Key System may interfere with some pacemakers or cardiac defibrillators. If you have one of these medical devices, please talk to your doctor to see if you should deactivate this system. 12. 2014 EPA-estimated mileage. Actual mileage will vary. 13. Based on manufacturers' data for hybrids in IIHS Midsize Moderately Priced Cars segment. 14. Performance figures are for comparison only and were obtained with prototype vehicles by professional drivers using special safety equipment and procedures. Do not attempt. 15. Do not rely exclusively on the Blind Spot Monitor. Always look over your shoulder and use your turn signal. There are several limitations to the function, detection, range and clarity of the monitor. For a complete list of limitations and directions regarding use of the monitor, please see the *Owner's Manual*. 16. Available on SE (not SE Sport), XLE and Hybrid XLE. 17. Do not rely exclusively on the Rear Cross-Traffic Alert system. Always look over your shoulder and use your mirrors to confirm rear clearance. There are limitations to the function, detection, range and clarity of the system. To learn more, see your *Owner's Manual*. 18. The backup camera does not provide a comprehensive view of the rear area of the vehicle. You should also look around outside your vehicle and use your mirrors to confirm rearward clearance. Cold weather will limit effectiveness and view may become cloudy. 19. Smart Stop Technology® operates only in the event of certain simultaneous brake and accelerator pedal applications. When engaged, the system will reduce power to help the brakes bring the vehicle to a stop. Factors including speed, road conditions and driver input can all impact stopping distance. Smart Stop Technology® is not a substitute for safe and attentive driving and does not guarantee instant stopping. Please see your *Owner's Manual* for further details. 20. All the airbag (AB) systems are Supplemental Restraint Systems. All ABs (if installed) are designed to inflate only under certain conditions and in certain types of severe collisions: frontal and knee ABs typically inflate in frontal collisions; side and side curtain ABs in side collisions; Roll-Sensing Curtain ABs at a severe tilt degree, roll or lateral G-force. In all other accidents, the ABs will not inflate. To decrease the risk of injury from an inflating AB, always wear seatbelts, sit upright in the middle of the seat as far back as possible and do not lean against the door. Do not put objects in front of an AB or around the seatback. Do not use a rearward-facing child seat in any front passenger seat. The force of an inflating AB may cause serious injury or death. See your *Owner's Manual* for further information/warnings. 21. Vehicle Stability Control (VSC) is an electronic system designed to help the driver maintain vehicle control under adverse conditions. It is not a substitute for safe driving practices. Factors including speed, road conditions and driver steering input can all affect whether VSC will be effective in preventing a loss of control. Please see your *Owner's Manual* for further details. 22. Brake Assist is designed to help the driver take full advantage of the benefits of ABS. It is not a substitute for safe driving practices. Braking effectiveness also depends on proper brake-system maintenance and tire and road conditions. 23. Whiplash-Injury-Lessening front seats can help reduce the severity of whiplash injury in certain rear-end collisions. 24. The Toyota Tire Pressure Monitor alerts the driver when tire pressure is critically low. For optimal tire wear and performance, tire pressure should be checked regularly with a gauge; do not rely solely on the monitor system. See your *Owner's Manual* for details. 25. In certain areas, 4-cylinder models are equipped as Partial Zero Emission Vehicles (PZEV). Equipment causes nominal reduction in horsepower (from 178 hp to 173 hp) and torque (from 170 lb.-ft. to 165 lb.-ft.). For Camry 4-cylinder models certified as Partial Zero Emission Vehicles (PZEV), all emissions components are covered for 15 years or 150,000 miles, whichever occurs first, for performance or defect. 26. Entune™ is a trademark of Toyota Motor Corporation. Always drive safely, obey traffic laws and focus on the road while driving. Services vary by phone/carrier. Functionality depends on many factors. Services subject to change. For enrollment and more details, see [toyota.com/entune](http://toyota.com/entune). 27. iPod® and iPhone® are registered trademarks of Apple Inc. All rights reserved. 28. Be sure to obey traffic regulations and maintain awareness of road and traffic conditions at all times. HD Radio™ Technology manufactured under license from iBiquity Digital Corporation U.S. and Foreign Patents. HD Radio™ and the HD, HD Radio, and "Arc" logos are proprietary trademarks of iBiquity Digital Corp. 29. HomeLink® is a registered trademark of Johnson Controls, Inc. 30. CAUTION! When driving a hybrid vehicle, pay special attention to the area around the vehicle. Because there is little vehicle noise in electric-only mode, pedestrians, people riding bicycles or other people and vehicles in the area may not be aware of the vehicle starting off or approaching them, so take extra care while driving. 31. This floor mat was designed specifically for use in your model and model year vehicle and SHOULD NOT be used in any other vehicle. To avoid potential interference with pedal operation, each mat must be secured with retention hooks/clips. Do not install a floor mat on top of an existing floor mat. 32. Cargo and load capacity limited by weight and distribution. 33. Available for vehicles with factory remote keyless entry. 34. Available for vehicles with factory security. 35. Apps/services vary by phone/carrier; functionality depends on many factors. Select apps use large amounts of data; you are responsible for charges. Apps and services subject to change. See [toyota.com/entune](http://toyota.com/entune) for details.

## WARRANTIES

Every Toyota Car, Truck and SUV is built to exceptional standards. And that's not idle boasting. We back it up with these Limited Warranty Coverages:

**Basic:** 36 months/36,000 miles (all components other than normal wear and maintenance items).

**Powertrain:** 60 months/60,000 miles (engine, transmission/transaxle, drive system, seatbelts and airbags).

**Rust-Through:** 60 months/unlimited miles (corrosion perforation of sheet metal).

**Emissions:** Coverages vary under Federal and California regulations. Refer to applicable *Warranty and Maintenance Guide* for details.

**Accessories:** For Genuine Toyota Accessories purchased at the time of the new vehicle purchase, the Toyota Accessory Warranty coverage is in effect for 36 months/36,000 miles from the vehicle's in-service date, which is the same coverage as the Toyota New Vehicle Limited Warranty.

Toyota strives to build vehicles to match customer interest and thus they typically are built with popular options and option packages. Not all options/packages are available separately and some may not be available in all regions of the country. See [toyota.com](http://toyota.com) for information about options/packages commonly available in your area. If you would prefer a vehicle without any or with different options, contact your dealer to check for current availability or the possibility of placing a special order.

For Genuine Toyota Accessories purchased after the new vehicle purchase the coverage is 12 months, regardless of mileage, from the date the accessory was installed on the vehicle, or the remainder of any applicable new vehicle warranty, whichever provides greater coverage, with the exception of car covers. Car covers are warranted for 12 months from the date of purchase and do not assume any coverage under the Toyota New Vehicle Limited Warranty. You may be eligible for transportation assistance if it's necessary that your vehicle be kept overnight for repairs covered under warranty. Please see your authorized Toyota dealership for further details.

For complete details about Toyota's warranties, please visit [www.toyota.com](http://www.toyota.com), refer to the applicable *Warranty and Maintenance Guide* or see your Toyota dealer.

Some vehicles are shown with available equipment. Seatbelts should be worn at all times. For details on vehicle specifications, standard features and available equipment in your area, contact your Toyota dealer. A vehicle with particular equipment may not be available at the dealership. Ask your Toyota dealer to help locate a specifically equipped vehicle.

All information presented herein is based on data available at the time of printing, is subject to change without notice and pertains specifically to mainland U.S.A. vehicles only. Prototypes shown. Actual production vehicles may vary.

