

Jeep[®]

FleetVan

MODEL FJ-3A



Jeep
UNIVERSAL CJ-3B



Jeep
UNIVERSAL CJ-5



Jeep
UNIVERSAL CJ-6



Jeep
SURREY GALA (2WD)



Jeep
DISPATCHER DJ-3A
(2WD)



Jeep
4WD PICK-UP TRUCK



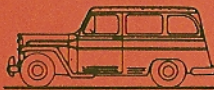
Jeep
FORWARD CONTROL
FC-150 TRUCK



Jeep
FORWARD CONTROL
FC-170 TRUCK



Jeep
PANEL DELIVERY
(2WD & 4WD)



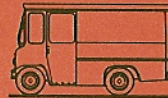
Jeep
STATION WAGON
(2WD)



Jeep
4x4
UTILITY WAGON



Jeep
TRAVELLER
2WD & 4WD



Jeep
FLEETVAN
(2WD)

Versatility

MEANS THE
COMPLETE LINE OF

Jeep®

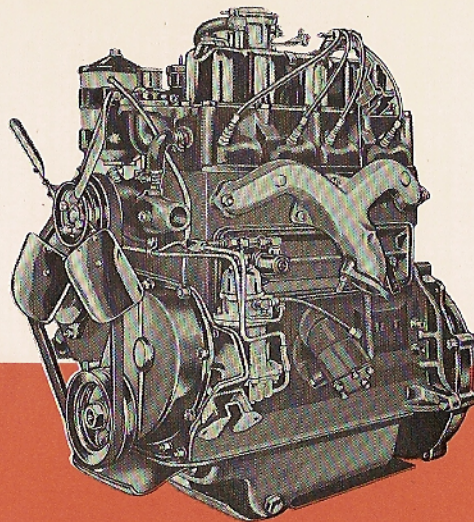
**2 AND 4-WHEEL
DRIVE VEHICLES!**

'Jeep' versatility comes in many shapes and sizes.

Whatever your vehicle need, there's a rugged 'Jeep' vehicle to do the job. Choice of 4-cylinder F-Head or 6-cylinder L-Head engines in the 4WD Pick-up Truck, Panel Delivery, Utility Wagon, Station Wagon and Traveller.

*Stake Model available.

**Dual Rear Wheel Platform Stake Model available in 8,000 lb. G.V.W. option.

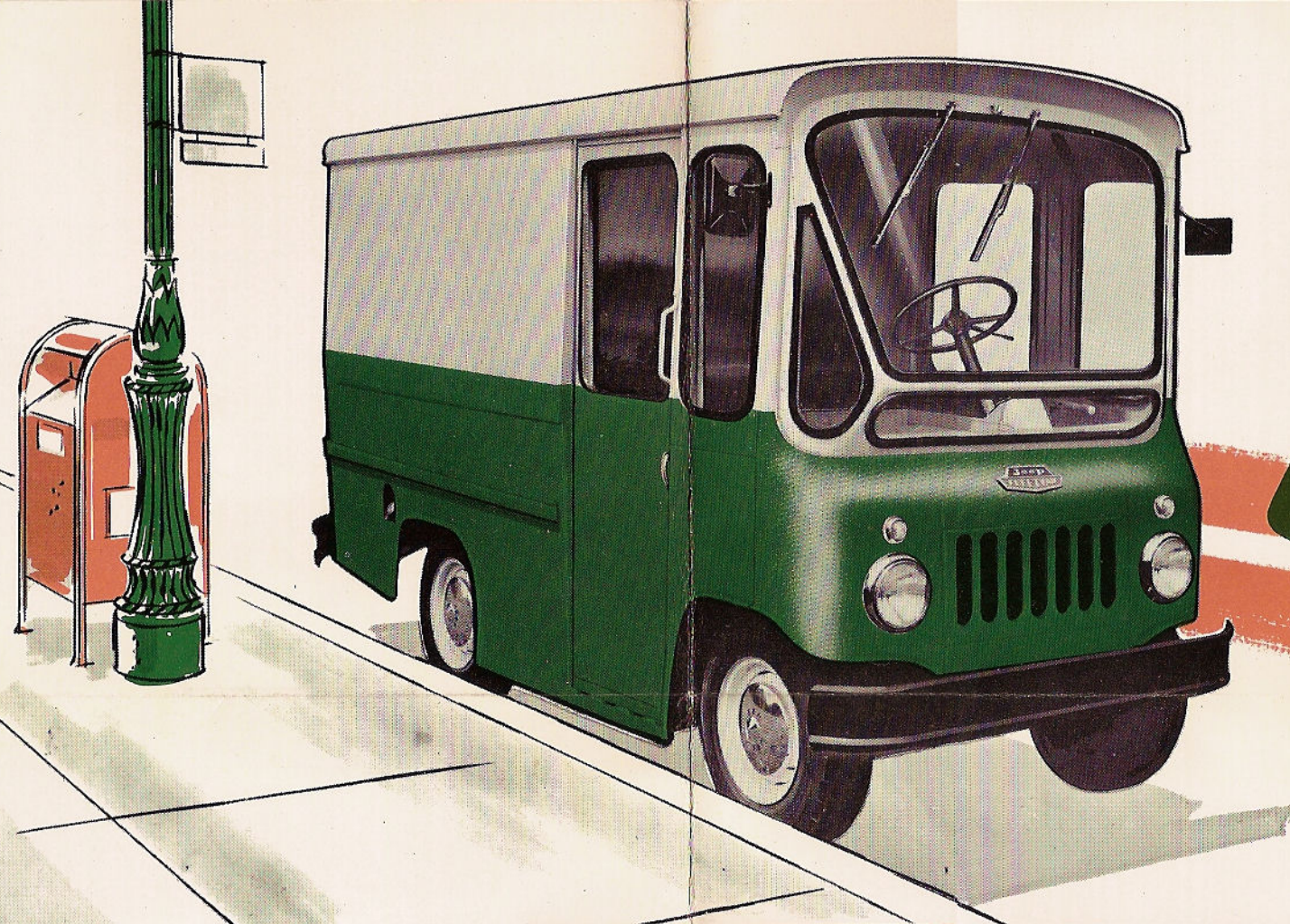


'JEEP' 4-CYLINDER F-HEAD "HURRICANE" ENGINE

The world-famous F-Head "Hurricane" that powers the Fleetvan gives you the kind of economy only a 4-cylinder engine can. Develops 75 H.P. @ 4000 R.P.M., 114 ft. lbs. torque @ 2000 R.P.M. with a displacement of 134.2 cubic inches. Positive valve rotation and wear-resisting aluminum alloy pistons. Proved on the job over millions of service miles, the "Hurricane" makes thrifty use of regular gas, delivers power as you need it — when you need it. Built for long life and low-cost maintenance and operation.

WILLYS MOTORS, INC.
WILLYS-OVERLAND EXPORT CORP.
Toledo 1, Ohio

WILLYS OVERSEAS S. A.
Zug, Switzerland

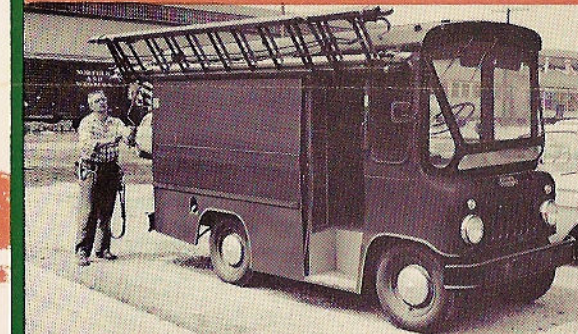


Jeep Fleetvan...

MODEL FJ-3A

Now, from Willys Motors, comes a truly distinctive addition to the world-famous line of 'Jeep' vehicles—the Fleetvan. Specifically designed for light-duty, multi-stop operations, the 2-Wheel Drive Fleetvan is efficient, rugged, highly maneuverable and economical. Its backbone is the tough 'Jeep' chassis; its power plant, the job-proved 4-cylinder "Hurricane" engine that squeezes extra power from low octane gas. Smartly styled, soundly built, sensibly designed, the Fleetvan will give you extra years of trouble-free service with low-cost maintenance and operating economy.

Low in initial and operating costs, the Fleetvan maintains traditional 'Jeep' high resale value at trade-in time. Used in fleets or as a single vehicle, the Fleetvan is ideal for utility companies, bakeries, laundries, appliance repair, service companies and many others.



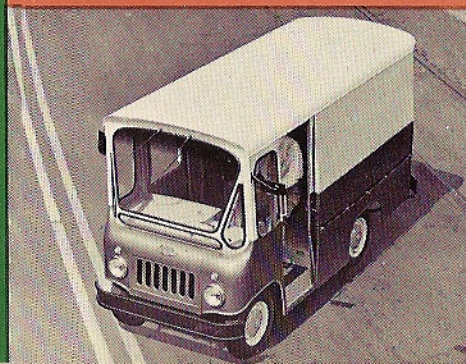
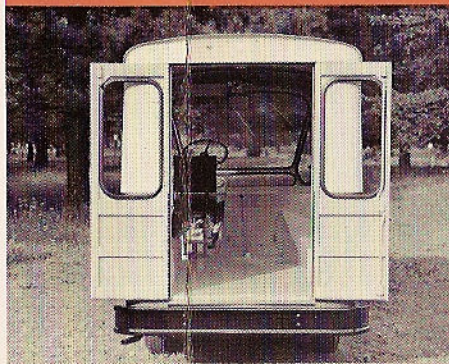
The 'Jeep' Fleetvan represents an advanced concept in the development of light-duty route vans. On only 81 inches of wheelbase it carries 1,000 lbs. of payload—a third of its curb weight. Its load space length of 87½ in. supports a cargo capacity of 170 cu. ft.

Only 154 in. long and 64.7 in. wide, the slim, trim Fleetvan turns in a radius of 17 ft. This means fast getaway in traffic and at the loading dock, easy maneuverability and parking. In fact, five Fleetvans take up less garage space than four nationally advertised competitive vehicles!

In the Fleetvan the driver has an unobstructed view in every direction. He can see a three-foot high object on the road only 12 in. from the front bumper—which means greater safety. The side door height of 70 in. means easy walk-in—up-front engine leaves space free for walk-through. And the rear loading height is only 26½ in. from the ground.

The smartly styled Fleetvan adds an air of distinction to any business, makes a good impression in every neighborhood. But more important, world-famous 'Jeep' dependability—backed by a twenty-year reputation—assures you of reliable performance every day on the job.

Complete ventilation, an all-steel body and locking doors add to the Fleetvan's comfort, convenience and safety. Doors slide open and shut with ease. An efficient heater plus weatherproofing mean reliable, all-weather operation.



SPECIFICATIONS OF THE 'JEEP' FLEETVAN, MODEL FJ-3A

G.V.W.....4000 lbs. **WHEELBASE**.....81"

OVERALL LENGTH..154" **OVERALL WIDTH**.....64.7"

TREAD.....48⁹/₁₆" **OVERALL HEIGHT (Curb)**..90.12"

AXLES • Front: 1-Beam, capacity 2000 lbs.
Rear: Hypoid, semi-floating, capacity 2000 lbs.,
ratio 4.56:1.

BRAKES • Service: Hydraulic, 9 in. drum diameter, 132.81 sq. in. total effective area.

CLUTCH • Single plate, 72 sq. in. frictional area.

COOLING • Fin & Tube, 11 qts., 12 qts. with heater.

ELECTRICAL • Battery: 50 amp. hour, 12-volt (6-volt optional). Generator 35 amp. capacity.

ENGINE • 4-cyl. F-Head, 2 in. intake valves in head, exhaust valves in block. Bore and stroke 3¹/₈ x 4³/₈ in. Displacement 134.2 cu. in.

• Max. H.P. 75 @ 4000 R.P.M. Torque 114 ft. lbs. @ 2000 R.P.M. Compression ratio 7.4:1. (6.9:1 optional).

• **FRAME** • Heavy steel channel sides with 6 cross members.

• **FUEL TANK** • Capacity: 15 gallons, vented safety cap.

• **SHOCK ABSORBERS** • Direct acting, hydraulic.

• **SPRINGS** • Semi-elliptic leaf type.

• Front: 36.25 in. x 1.75 in., 10 leaves, rate 260 lb./in.

• Rear: 46 in. x 2.50 in., 7 leaves, rate 280 lb./in.

• **STEERING** • Cam and lever, overall ratio 17.9:1.

• **TIRES** • 6.70x15, 4-ply tubeless.

• **TRANSMISSION** • 3-speed synchromesh. Ratios: 1st—3.339:1; 2nd—1.851:1; 3rd—1.000:1; Reverse—4.531:1.

• **WEIGHT, CURB** • 2991 lbs.

• **WHEELS** • 4, disc type, 15 x 5.00, 5 stud.

SPECIFICATIONS SUBJECT TO CHANGE WITHOUT NOTICE