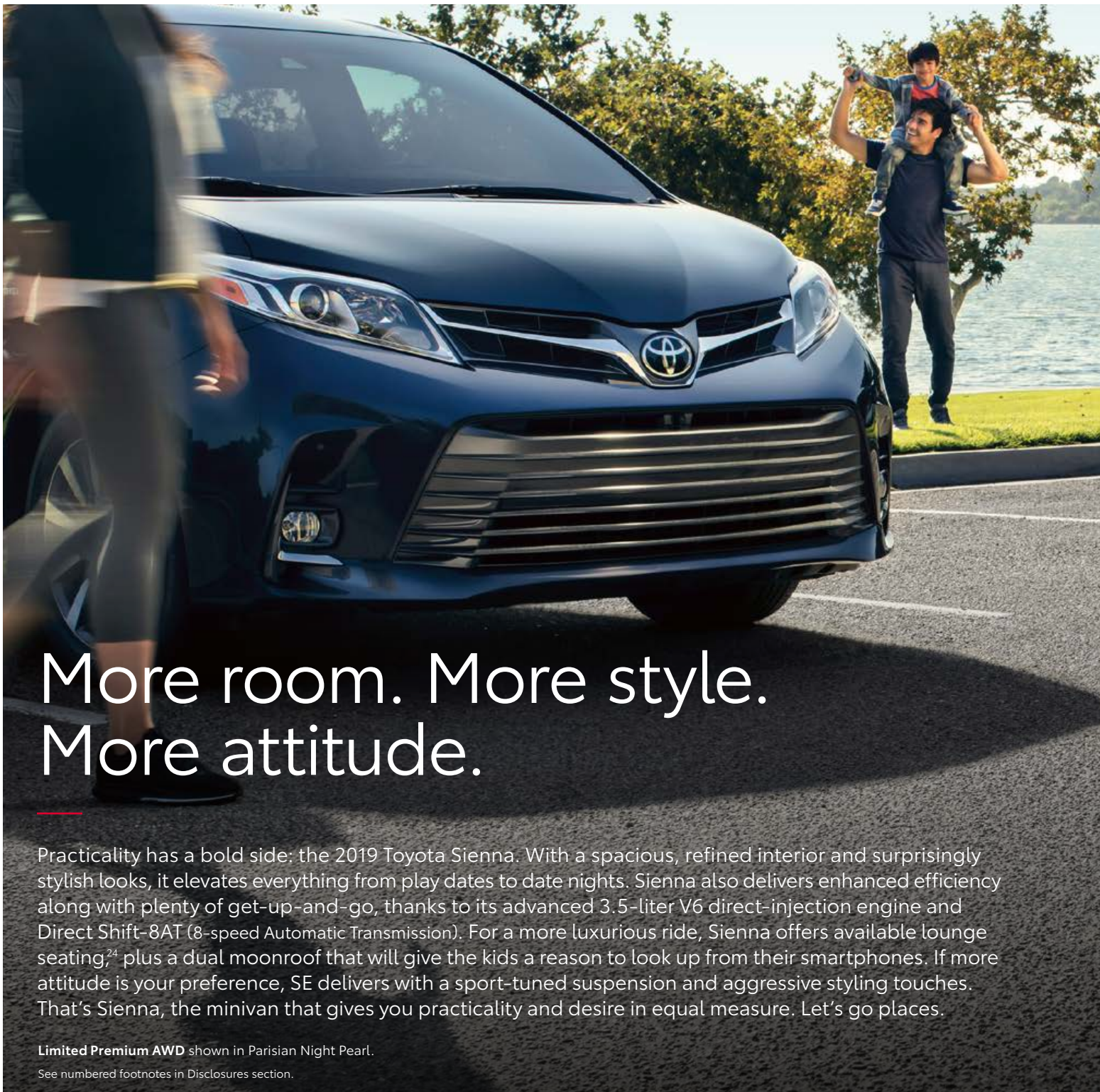


2019 Sienna





“When the going gets tough, don’t let foul weather put a damper on your fun, with Sienna’s available All-Wheel Drive (AWD).”

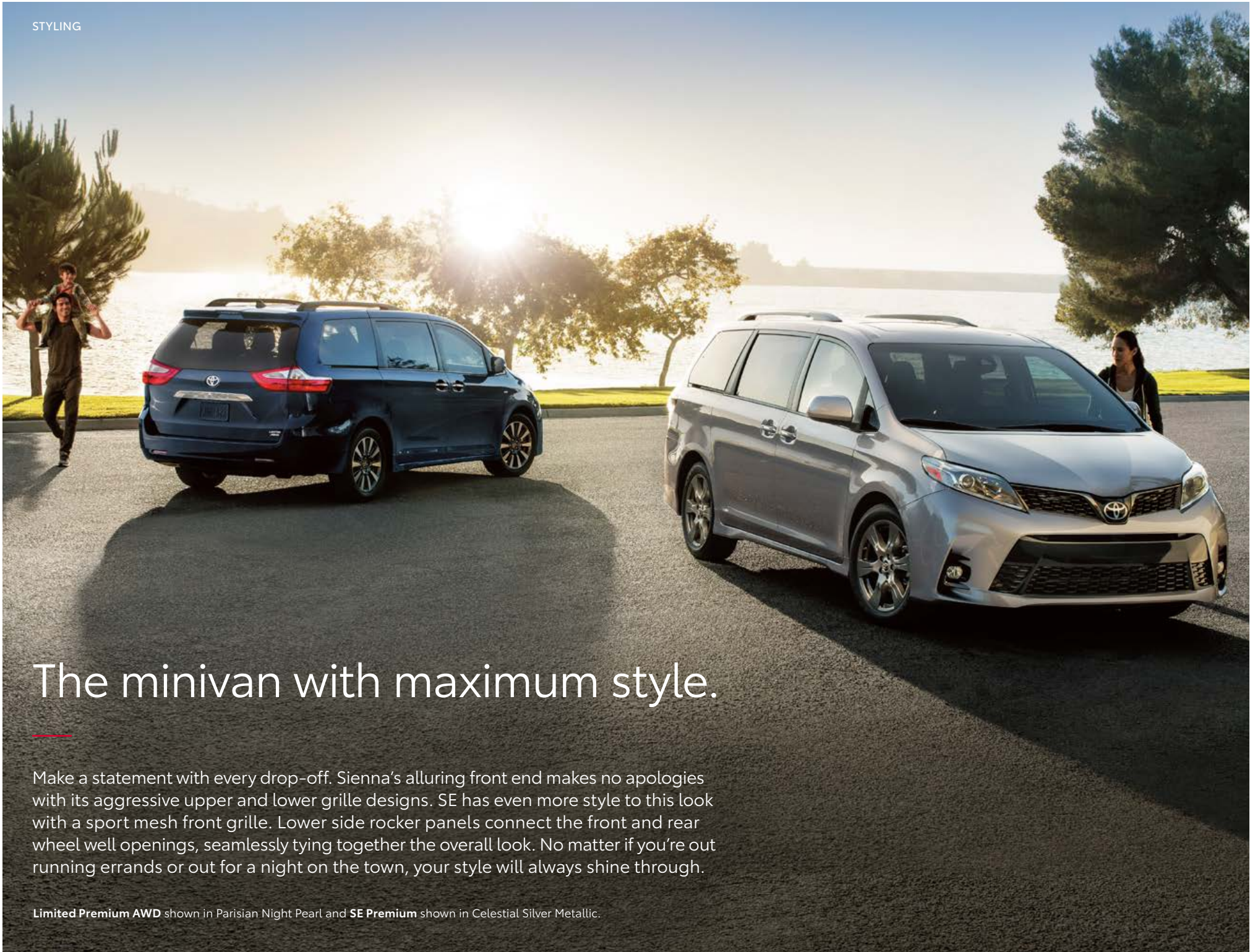
More room. More style. More attitude.

Practicality has a bold side: the 2019 Toyota Sienna. With a spacious, refined interior and surprisingly stylish looks, it elevates everything from play dates to date nights. Sienna also delivers enhanced efficiency along with plenty of get-up-and-go, thanks to its advanced 3.5-liter V6 direct-injection engine and Direct Shift-8AT (8-speed Automatic Transmission). For a more luxurious ride, Sienna offers available lounge seating,²⁴ plus a dual moonroof that will give the kids a reason to look up from their smartphones. If more attitude is your preference, SE delivers with a sport-tuned suspension and aggressive styling touches. That’s Sienna, the minivan that gives you practicality and desire in equal measure. Let’s go places.

Limited Premium AWD shown in Parisian Night Pearl.

See numbered footnotes in Disclosures section.





The minivan with maximum style.

Make a statement with every drop-off. Sienna's alluring front end makes no apologies with its aggressive upper and lower grille designs. SE has even more style to this look with a sport mesh front grille. Lower side rocker panels connect the front and rear wheel well openings, seamlessly tying together the overall look. No matter if you're out running errands or out for a night on the town, your style will always shine through.

Limited Premium AWD shown in Parisian Night Pearl and SE Premium shown in Celestial Silver Metallic.

ALL-WHEEL DRIVE

Helps take weather out of the equation.

Sometimes we need to go places when weather conditions are far from ideal, which is why the 2019 Sienna offers the added security of All-Wheel Drive (AWD). By utilizing AWD with active torque control, this advanced system processes information sent from various sensors, then transmits the right amount of torque to the front and rear wheels, helping you maintain traction.

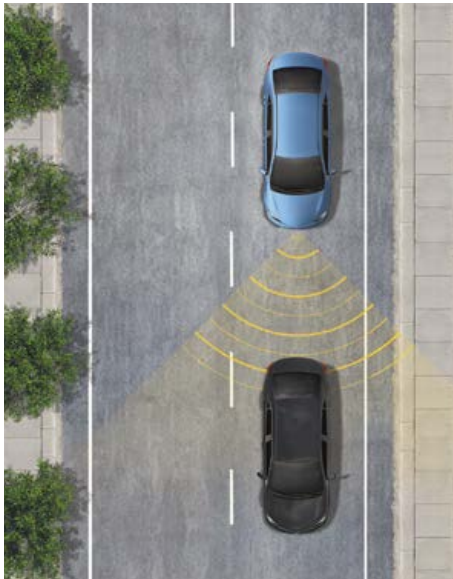


SE Premium AWD shown in Celestial Silver Metallic.



Designed for safety.

Toyota Safety Sense™ (TSS)³³ is a bundle of active safety features on many new Toyota vehicles at no additional cost. These innovative features were designed to help protect you and your passengers from harm.



DYNAMIC RADAR CRUISE CONTROL (DRCC)²⁵

Intended for highway use and similar to “constant speed” cruise control, Dynamic Radar Cruise Control (DRCC) lets you drive at a preset speed. DRCC uses vehicle-to-vehicle distance control, which adjusts your speed, to help you maintain a preset distance from vehicles ahead of you that are driving at a slower speed. DRCC uses a front-grille-mounted radar and an in-vehicle camera designed to detect vehicles and their distance. If a driver is traveling slower than you, or within your preset range, DRCC will automatically slow your vehicle down without deactivating cruise control. If DRCC determines you need to slow down more, an audio and visual alert notifies you and brakes are applied. When there’s no longer a vehicle driving slower than your set speed in front of you, DRCC will then accelerate to the preset speed.



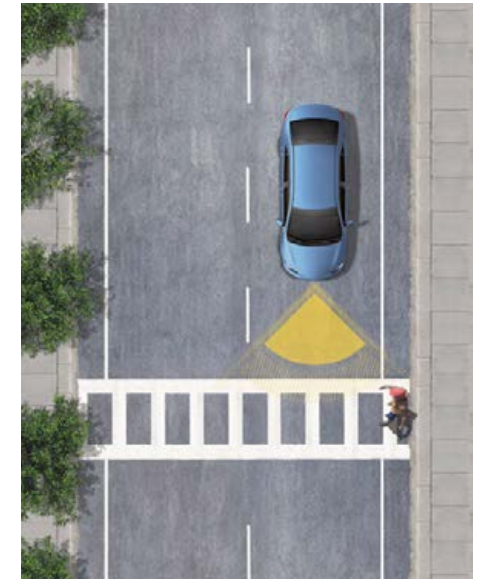
LANE DEPARTURE ALERT WITH STEERING ASSIST (LDA w/SA)³⁶

Under certain circumstances, Lane Departure Alert (LDA) is designed to detect lane departure on roads with visible lane markings. LDA only activates when you’re traveling at a speed of 32 mph or faster. When you hear and see the alert, after carefully checking the road around you, you should safely direct your vehicle back to the center of your lane. In addition, if the system senses that you’re unintentionally drifting, it may automatically make small corrective steering inputs to help keep your vehicle in its lane.



AUTOMATIC HIGH BEAMS (AHB)³⁷

Automatic High Beams (AHB) are a safety system designed to help you see more clearly at night — while reducing glare for other drivers. Designed to activate at speeds above 25 mph, AHB rely on an in-vehicle camera to help detect the headlights of oncoming vehicles and taillights of preceding vehicles, then automatically toggle between high and low beams accordingly to provide the appropriate amount of light. By using high beams more frequently, the system may allow earlier detection of pedestrians and obstacles.



PRE-COLLISION SYSTEM³⁴ WITH PEDESTRIAN DETECTION³⁵ (PCS w/PD)

Using an in-vehicle camera and radar to help detect a vehicle or a pedestrian in front of you, the Pre-Collision System with Pedestrian Detection (PCS w/PD) can help you mitigate or avoid a potential collision. If the system determines that a frontal collision is likely, it prompts you to take action using audio and visual alerts. If you notice the potential collision and apply the brakes, PCS w/PD may apply additional force using Brake Assist (BA).³¹ If you don’t brake in time, it may automatically apply the brakes to reduce your speed, helping to minimize the likelihood of a frontal collision or reduce its severity.

The family hauler that really hauls.

There's no need to compromise driving fun for family comfort. Sienna's lightweight, rigid body is aerodynamically optimized for responsive handling. A 296-hp V6 direct-injection engine helps deliver greater efficiency and power. Plus, SE utilizes sport-tuned suspension and Electric Power Steering (EPS) for a precise feel. It's performance-oriented engineering that everyone can appreciate.



SPORT INSTRUMENT CLUSTER

Get more information from a quick glance with Sienna's stylish gauge cluster. Customize the large, easy-to-read standard 4.2-in. color Multi-Information Display (MID) to show what you need most. For those with a sportier side, Sienna SE offers racing-inspired white-faced gauges.



19-IN. ALLOY WHEELS

Sienna SE comes standard with 19-in. 6-spoke gunmetal-finish alloy wheels fitted with low-profile tires for head-turning style.

PERFORMANCE



**SPORT-TUNED SUSPENSION
AND STEERING**

Command every corner. Sienna SE rewards you with dynamic handling and responsive steering thanks to its sport-tuned suspension and sport-calibrated Electric Power Steering (EPS). It's designed to get the most out of every drive.

SE Premium shown in Celestial Silver Metallic.

A welcoming space for the entire family.

Fall in love with Sienna's inviting soft-touch seating and available premium contrast stitching, but don't forget about all the technology. A cockpit-like driver's area with a standard 7-in. touch-screen and easy-to-use climate controls helps make every trip a little more enjoyable.



CLIMATE CONTROL

Sienna features three separate climate control zones, a digital display, plus easier-to-use controls. This system is also smart enough to automatically adjust all three zones at once, so no one will be too hot or cold.



SOFT TOUCH/CONTRAST STITCHING

Complementing Sienna's premium feel is available contrast stitching. Using genuine thread, this subtle design touch adds visual interest and contemporary style. It's one of many quality details that helps Sienna's new interior stand out.



AVAILABLE LEATHER SEATING SURFACES

Sienna keeps your family rolling in style. Available leather seating surfaces bring comfort to any outing, and with contrast stitching throughout the cabin, Sienna is dressed for any occasion. We've also added soft-touch materials throughout Sienna's cabin to help keep big hands and little hands happy. Things like the dash and vent controls feel luxurious to the touch, adding to Sienna's refined feel.

PREMIUM INTERIOR



Limited Premium AWD interior shown in Chestnut with white accent stitching.

All for fun. Fun for all.

Take every drive to the next level with the Entune™ 3.0⁶ connected infotainment system. Now featuring Apple CarPlay^{®53} support, it lets you access your favorite iPhone^{®10} apps such as Maps, Music and Messages right on the high-resolution 7-in. touch-screen display. It also provides easy access to the standard Entune™ 3.0⁶ App Suite, available on every Sienna, so everyone can enjoy real-time traffic updates and other great apps.⁵⁴ Plus, with Amazon Alexa⁵⁵ compatibility, simply ask to play music, hear the news, check weather, control smart home devices and more.



JBL^{®20} WITH CLARI-FI™²⁰

Your group sing-alongs just got better. Sienna's available Entune™ 3.0⁶ Premium Audio with JBL[®] w/Clari-Fi™ uses ten speakers, including a subwoofer, to enhance the sound quality and hit every high note — even if you can't.



DYNAMIC NAVIGATION¹⁸

Entertainment for the entire family. All this fun comes with a confident drive courtesy of the available Entune™ 3.0⁶ Dynamic Navigation. Just set your destination and the system updates the roads to give you the most up-to-date directions, so you'll never miss a music program, practice or play date again.



WI-FI CONNECT POWERED BY VERIZON¹⁷

Everyone can stay connected with Sienna's available Wi-Fi Connect Powered by Verizon. The advanced system supports up to five devices, making Sienna the hottest spot on the road.

PREMIUM INTERIOR



SE Premium interior shown in Black with white accent stitching.

Apple CarPlay[®] compatibility shown. See numbered footnotes in Disclosures section.

We've taken an active interest in your family.

Many new Toyotas are equipped with the Star Safety System,TM a suite of six active safety features designed to help keep you out of harm's way. The system includes Enhanced Vehicle Stability Control (VSC),³⁰ Traction Control (TRAC), Anti-lock Brake System (ABS), Electronic Brake-force Distribution (EBD), Brake Assist (BA)³¹ and Smart Stop Technology[®] (SST).³²



BLIND SPOT MONITOR (BSM)³ WITH REAR CROSS-TRAFFIC ALERT (RCTA)⁴

Using radar technology, the available Blind Spot Monitor (BSM) is designed to alert you when a vehicle enters a blind spot on either side. Available Rear Cross-Traffic Alert (RCTA) works similarly by providing you with audible and visual indicators to warn you of approaching vehicles.

BIRD'S EYE VIEW CAMERA²¹

Sienna's available Bird's Eye View Camera with Perimeter Scan uses front-, side- and rear-mounted cameras to display a panoramic overhead view. It helps you see more of your surroundings, so you can drive with confidence.

BACKUP CAMERA⁵

Park and reverse with ease thanks to Sienna's standard backup camera. Available on Limited, the Panoramic Camera⁵ offers a 180-degree wide-angle view, showing both your distance and projected path. The available Bird's Eye View Camera²¹ with Perimeter Scan helps you see nearby obstacles thanks to a 360-degree overhead view. All of this helps give you peace of mind for a more peaceful drive.



ADVANCED TECHNOLOGIES



FRONT AND REAR PARKING ASSIST SONAR⁴¹

Sienna is available with parking assist sonars that help you quickly determine the distance between your Sienna and other vehicles with audible warning signals and a color graphic that changes as you draw closer to the obstacle.

Limited Premium AWD shown in Parisian Night Pearl.

See numbered footnotes in Disclosures section.

It's like a family-friendly five-star resort.

Sienna has the tech and convenience to make your active lifestyle easier and more fun. We took everything you and your kids wanted in an interior and put it all together in a premium, easy-to-access package. Whether you want to listen to a favorite soundtrack, watch a family-friendly movie or just fit more stuff, Sienna is ready to go. Welcome to the ultimate family room.



DUAL-VIEW BLU-RAY DISC™ ENTERTAINMENT CENTER²²

The available Dual-View Entertainment Center has Blu-ray capability and includes a 16.4-in. color display, SD and HDMI inputs, two 120V AC power outlets and a remote with two wireless headphones.²³ Its unique screen can display one wide-angle image or two smaller images from separate sources at the same time.



5 USB PORTS⁹

The power to do more. Now everyone can stay in charge thanks to Sienna's five standard USB ports spread across three rows of seats. With so many options, Sienna will put an end to the family power struggle.



DRIVER EASY SPEAK

Yes, those in the rear seats can hear you now. Sienna's available Driver Easy Speak feature has a built-in microphone up front that picks up your voice and transmits it to rear-seat passengers through the back speakers. To turn it on, just press the button on the 7-in. touch-screen display.

COMFORT AND CONVENIENCE



Limited Premium AWD interior shown in Chestnut with white accent stitching.

Spoil them with safety.

Our commitment to your family's well-being doesn't end with the active safety features found in the Star Safety System.TM Should a collision occur, Sienna's comprehensive set of eight standard airbags³⁸ is designed to help protect occupants in all three rows of seating. Sienna also offers a multitude of features, like available rain-sensing windshield wipers, that you might not associate with safety but that can help ensure your overall peace of mind.



8 STANDARD AIRBAGS³⁸

An Advanced Airbag System helps protect you and your family with driver and front passenger dual stage airbags, driver and front passenger seat-mounted side airbags, a driver knee airbag, a front passenger seat-cushion airbag and Roll-sensing Side Curtain Airbags (RSCA) for all rows.

SAFETY CONNECT^{®16}

Via Toyota's 24/7 call center, standard Safety Connect[®] offers subscribers helpful features such as Emergency Assistance, Stolen Vehicle Locator, Roadside Assistance and Automatic Collision Notification. Safety Connect[®] also offers the reliability of embedded cellular and GPS technology.

ACTIVE HEADRESTS³⁹

A smart way to care for you and yours. In the event of an impact, Sienna's headrests will move up and forward — providing head support for the front-seat passengers. These active headrests reduce the motion that causes whiplash, while increasing your peace of mind.

STAR SAFETY SYSTEMTM

Sienna comes standard with the Star Safety System,TM a suite of six active safety features that includes Enhanced Vehicle Stability Control (VSC),³⁰ Traction Control (TRAC), Anti-lock Brake System (ABS), Electronic Brake-force Distribution (EBD), Brake Assist (BA)³¹ and Smart Stop Technology[®] (SST).³²

4 LATCH LOCATIONS

LATCH (Lower Anchors and Tethers for CHildren) provides an added measure of safety for smaller family members. Sienna offers four LATCH locations, including lower anchors and tethers on outboard second- and third-row seats.





SIDE-IMPACT DOOR BEAMS

Within each of Sienna's four doors are steel beams designed to help protect the occupants in the event of a side-impact collision.

SE Premium AWD shown in Celestial Silver Metallic.

Team. Squad. Crew. Bring whomever you like.

Parent. Coach. Bandleader. You play a lot of roles, so we made sure you have choices like second-row seats that tip up and slide forward, and an available power third-row seat to make loading up all your passengers and cargo easier. Plus, there is plenty of head room, leg room and hip room. So now, even if the kids outgrow their car seats, or the college band reunites, Sienna will be right there with you.



TIP-UP AND LONG-SLIDE SECOND ROW

Even when you're seated in the third row, you'll get first-class treatment. Sienna's second-row seat cushions tip up and the seats slide forward to make access to the third-row seat a breeze.



SEATS UP TO EIGHT

You don't have to be a star to have an entourage. Spacious seating for up to eight ensures no one's fun takes a back seat. When the eighth seat is not in use, you can easily store it securely in the cargo area cubby. Sienna gives you enough space to pack 'em all up and move 'em out, where everyone's comfort is a priority.



LOUNGE SEATING²⁴

Treat your second-row passengers to the comforts of home with available lounge seating. These comfy captain's chairs are equipped with adjustable ottomans and armrests.

COMFORT



Limited Premium AWD interior shown in Chestnut with white accent stitching.

PERFORMANCE



Limited Premium AWD shown in Parisian Night Pearl.

Color



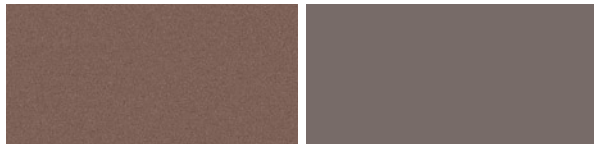
Midnight Black Metallic

Parisian Night Pearl



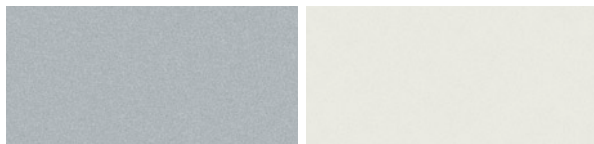
Alumina Jade Metallic

Salsa Red Pearl



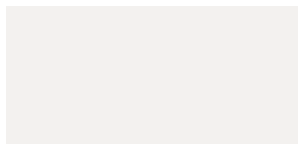
Toasted Walnut Pearl

Predawn Gray Mica



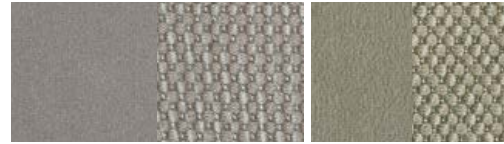
Celestial Silver Metallic

Blizzard Pearl⁵⁶



Super White

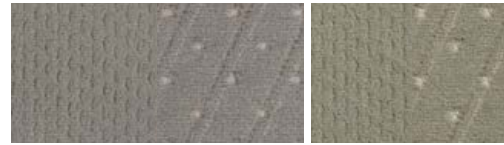
Trim



Also available in

L fabric shown in Ash

Dark Bisque fabric



Also available in

LE fabric shown in Ash

Dark Bisque fabric



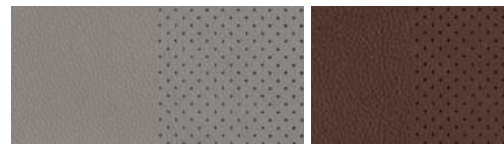
SE perforated leather shown in Black



Also available in

XLE leather shown in Ash

Dark Bisque leather



Also available in

Limited perforated leather shown in Ash

Chestnut leather

Wheels



L and LE 17-in. 5-spoke alloy wheel



SE 19-in. 6-spoke gunmetal-finish alloy wheel



SE AWD 18-in. 6-spoke gunmetal-finish alloy wheel



XLE 17-in. 7-spoke machined alloy wheel



LE AWD, XLE AWD and Limited 18-in. 10-spoke machined alloy wheel

*Not all colors and trims available on all model grades. See dealer for details. See numbered footnotes in Disclosures section.

SIENNA MODELS



L

Exterior Features

- 17-in. 5-spoke alloy wheels with P235/60R17 tires
- Projector-beam halogen headlights with auto on/off feature
- Power outside mirrors with blind spot mirrors²
- Windshield wiper de-icer
- Engine immobilizer⁴³

Interior Features

- Seating for seven with second-row captain's chairs
- Entune™ 3.0⁶ Audio with App Suite⁶
- Apple CarPlay^{®53} compatibility
- Soft-touch materials
- Three-zone automatic climate control with air filter, individual temperature settings for driver, front passenger and rear-seat passengers, and separate rear digital control panel
- Integrated backup camera⁵
- 6-way adjustable driver's seat
- 4-way adjustable front passenger seat
- 60/40 Split & Stow 3rd Row[®] seat
- 4.2-in. color TFT Multi-Information Display (MID)
- Four LATCH locations

Safety Features

- Toyota Safety Sense™ P (TSS-P)³³ includes:
 - Pre-Collision System³⁴ with Pedestrian Detection³⁵ (PCS w/PD)
 - Lane Departure Alert with Steering Assist (LDA w/SA)³⁶
 - Automatic High Beams (AHB)³⁷
 - Dynamic Radar Cruise Control (DRCC)²⁵



LE

Adds to or replaces features offered on L

Exterior Features

- Available 18-in. 10-spoke machined alloy wheels with P235/55RF18 tires (AWD only)
- Color-keyed heated power outside blind spot mirrors²
- Dual power sliding side doors
- Black roof rails
- Privacy glass on rear windows

Interior Features

- Seating for up to eight
- Entune™ 3.0⁶ Audio Plus with App Suite⁶
- HD Radio,^{7M13} SiriusXM^{®14} Satellite Radio
- 8-way power-adjustable driver's seat
- 40/20/40 second-row seat with tip-up and long-slide feature and stowable center seat
- Second- and third-row sunshades

Options and Packages

- LE Preferred Package includes:
 - Blind Spot Monitor (BSM)³ with Rear Cross-Traffic Alert (RCTA)⁴
 - Smart Key System²⁶ with Push Button Start
- AWD



SE

Adds to or replaces features offered on LE

Exterior Features

- 19-in. 6-spoke gunmetal-finish alloy wheels with P235/50R19 tires
- Available 18-in. 6-spoke gunmetal-finish alloy wheels with P235/55RF18 tires (AWD only)
- Projector-beam halogen headlights with smoked sport trim, auto on/off feature and LED Daytime Running Lights (DRL)
- Sport mesh front grille
- Available color-keyed heated power outside mirrors with blind spot warning indicators³
- Chrome-accented outside door handles
- Fog lights
- Power liftgate with jam protection

Interior Features

- Seating for up to eight
- Perforated leather-trimmed and multi-stage heated front seats
- Sport instrumentation with 4.2-in. color TFT Multi-Information Display (MID)

Options and Packages

- SE Premium (includes but not limited to):
 - Blind Spot Monitor (BSM)³ with Rear Cross-Traffic Alert (RCTA)⁴
 - Rear parking assist sonar⁴¹
 - Power tilt/slide moonroof
 - Chrome-accented outside door handles with touch-sensor lock/unlock feature
 - Smart Key System²⁶ with Push Button Start
 - Driver Easy Speak
 - Entune™ 3.0⁶ Premium Audio with JBL^{®20} w/Clari-Fi^{™20} Dynamic Navigation¹⁸ and App Suite⁶
 - Dual-View Blu-ray Disc™ Entertainment Center²² with 16.4-in. display, HDMI port and two 120V AC power outlets
- SE Preferred Package
- AWD



XLE

Adds to or replaces features offered on SE

Exterior Features

- 17-in. 7-spoke machined alloy wheels with P235/60R17 tires
- Available 18-in. 10-spoke machined alloy wheels with P235/55RF18 tires (AWD only)
- Color-keyed heated power outside mirrors with blind spot warning indicators³
- Chrome-accented outside door handles with touch-sensor lock/unlock feature

Interior Features

- Seating for up to eight
- Leather-trimmed and multi-stage heated front seats
- Leatherette-trimmed 60/40 Split & Stow 3rd Row[®] seat
- Leather-trimmed tilt/telescopic steering wheel with audio, Bluetooth[®]12 and voice-command controls
- Smart Key System²⁶ with Push Button Start

Options and Packages

- XLE Premium:
 - Seating for up to eight
 - Rear parking assist sonar⁴¹
 - Dual-View Blu-ray Disc™ Entertainment Center²² with 16.4-in. display, HDMI port and two 120V AC power outlets
 - Entune™ 3.0⁶ Premium Audio with Dynamic Navigation¹⁸ and App Suite⁶
 - Driver Easy Speak
- AWD



Limited

Adds to or replaces features offered on XLE

Exterior Features

- 18-in. 10-spoke machined alloy wheels with P235/55R18 tires
- Projector-beam halogen headlights with auto on/off feature and LED Daytime Running Lights (DRL)
- Color-keyed heated power outside mirrors with blind spot warning indicators³ and memory feature

Interior Features

- Seating for seven with premium leather-trimmed second-row captain's chairs and available lounge seating²⁴
- Power third-row seat (FWD only)
- Premium leather-trimmed and multi-stage heated front seats
- Entune™ 3.0⁶ Premium Audio with JBL[®]20 w/Clari-Fi™²⁰ Dynamic Navigation¹⁸ and App Suite⁶
- Heated leather-trimmed tilt/telescopic steering wheel with audio, Bluetooth[®]12 and voice-command controls
- Front and rear parking assist sonar⁴¹

Options and Packages

- Limited Premium:
 - High Intensity Discharge (HID) headlights with manual level control, Automatic High Beams (AHB)³⁷ auto on/off feature and LED Daytime Running Lights (DRL)
 - 18-in. 10-spoke machined alloy wheels with P235/55RF18 tires (AWD only)
 - Dual-View Blu-ray Disc™ Entertainment Center²² with 16.4-in. display, HDMI port and two 120V AC power outlets
 - Rain-sensing windshield wipers
- AWD

Do more. Compromise less.

Sienna offers the Auto Access Seat as the perfect solution for anyone who needs a little extra help getting in and out of the vehicle. It meets all applicable safety standards and is universally suited for all ISOFIX/LATCH child seats. Specifically designed for Sienna, it's the industry's only power-rotating lift-up seat to be factory-installed by a major auto manufacturer. The Auto Access Seat rotates 90 degrees, then extends from the vehicle and lowers to a convenient transfer height, making for easy entry and exit. Since it's a factory-installed feature, the seat matches the interior of your Sienna and is covered under the same comprehensive three-year factory warranty as the rest of the vehicle. It's time to do even more.



"Our only limit should be our imagination.
Let's break down the barriers and
go beyond our inhibitions."





XLE with Auto Access Seat shown in Alumina Jade Metallic with available Premium Package.



LE with Auto Access Seat

Adds to or replaces features offered on L

Exterior Features

- 17-in. 5-spoke alloy wheels with P235/60R17 tires
- Color-keyed heated power outside blind spot mirrors²
- Dual power sliding side doors and power liftgate with jam protection
- Black roof rails
- Privacy glass on rear windows

Interior Features

- Seating for up to seven
- Power-rotating lift-up seat, second-row passenger side
- Entune™ 3.0⁶ Audio Plus with App Suite⁶
- HD Radio™¹³ SiriusXM®¹⁴ Satellite Radio
- 8-way power-adjustable driver's seat
- Second- and third-row sunshades



XLE with Auto Access Seat

Adds to or replaces features offered on LE with Auto Access Seat

Exterior Features

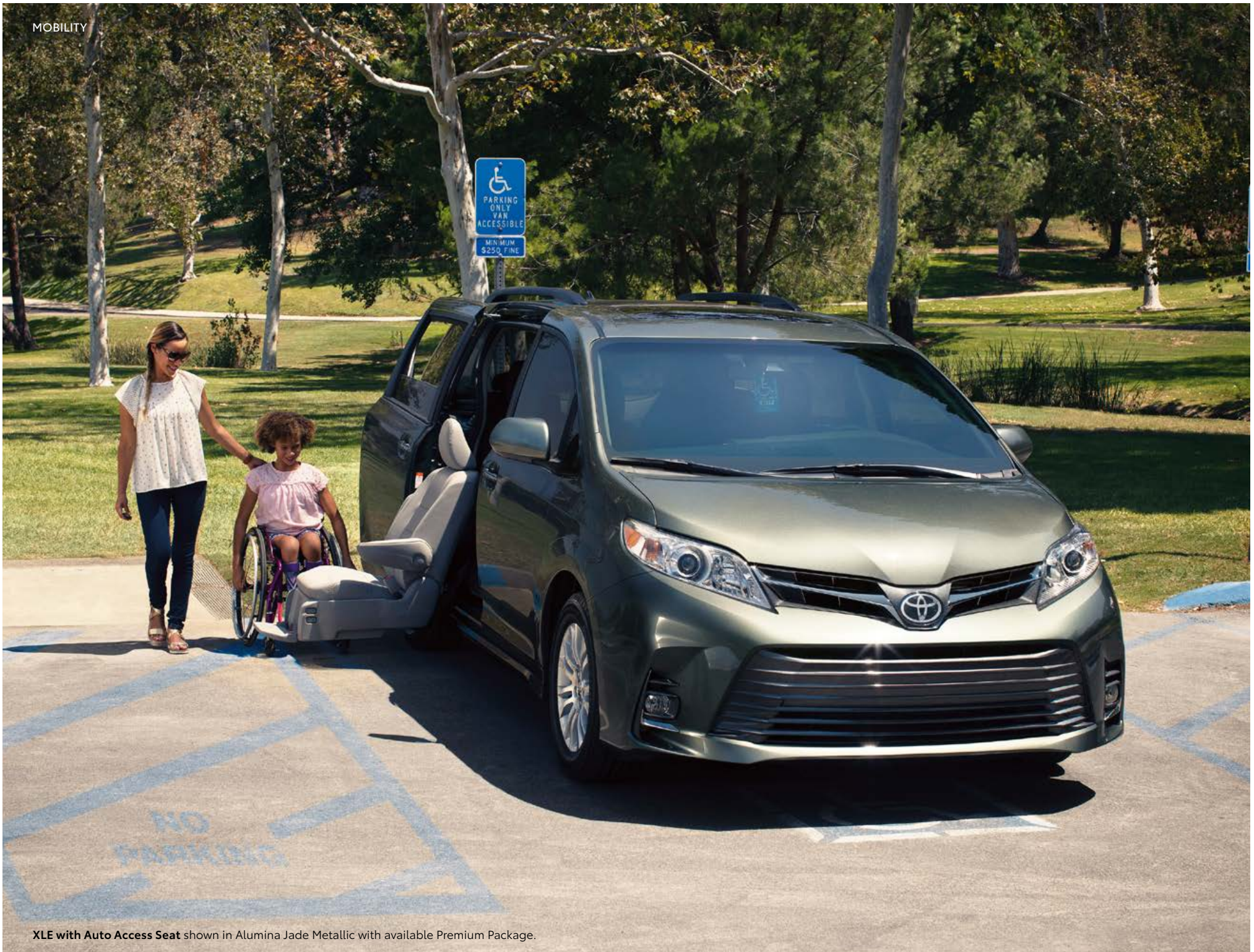
- 17-in. 7-spoke machined alloy wheels with P235/60R17 tires
- Color-keyed heated power outside mirrors with blind spot warning indicators³
- Chrome-accented outside door handles with touch-sensor lock/unlock feature

Interior Features

- Seating for up to seven
- Power-rotating lift-up seat, second-row passenger side
- Leather-trimmed and multi-stage heated front seats
- Leatherette-trimmed 60/40 Split & Stow 3rd Row® seat
- Leather-trimmed tilt/telescopic steering wheel with audio, Bluetooth®¹² and voice-command controls
- Smart Key System²⁶ with Push Button Start

Options and Packages

- XLE Premium:
 - Rear parking assist sonar⁴¹
 - Dual-View Blu-ray Disc™ Entertainment Center²² with 16.4-in. display, HDMI port and two 120V AC power outlets
 - Entune™ 3.0⁶ Premium Audio with Dynamic Navigation¹⁸ and App Suite⁶
 - Driver Easy Speak



XLE with Auto Access Seat shown in Alumina Jade Metallic with available Premium Package.

ACCESSORIES

Because no two families are alike. A wide range of Genuine Toyota Accessories is available to help you make your Sienna your own. Considering how appealing Sienna is to begin with, these quality products will be like icing on the cake. Some accessories may not be available in all regions of the country. See your Toyota dealer for details.

Alloy wheel locks

All-weather floor liners⁵²

Ashtray cup

Ball mount⁴⁷

Cargo liner

Cargo net — envelope⁴⁶

Cargo organizer⁴⁶

Cargo tote⁴⁶

Carpet floor mats⁵²

Door edge guards

Doorsill protectors

Emergency assistance kit

Lower door molding

Mudguards

Paint protection film⁵⁷

Remote Engine Starter⁵⁸

Roof rail cross bars⁵¹

Vehicle Intrusion Protection (VIP) Security System⁵⁹

Wireless headphones²³



Cargo net — envelope⁴⁶



Cargo organizer⁴⁶



Cargo tote⁴⁶



Door edge guards



Roof rail cross bars⁵¹



Doorsill protectors



Cargo liner



All-weather floor liners⁵²

FEATURES¹

EXTERIOR

	L	LE	SE	SE PREMIUM	XLE	XLE PREMIUM	LIMITED	LIMITED PREMIUM	LE with Auto Access Seat	XLE with Auto Access Seat
Projector-beam halogen headlights with auto on/off feature and Daytime Running Lights (DRL)	S	S	—	—	S	S	—	—	S	S
Projector-beam halogen headlights with smoked sport trim, auto on/off feature and LED Daytime Running Lights (DRL)	—	—	S	S	—	—	—	—	—	—
Projector-beam halogen headlights with auto on/off feature and LED Daytime Running Lights (DRL)	—	—	—	—	—	—	S	—	—	—
High Intensity Discharge (HID) headlights with manual level control, auto on/off feature and LED Daytime Running Lights (DRL)	—	—	—	—	—	—	—	S	—	—
Integrated wide-angle fog lights	—	—	S	S	S	S	S	S	—	S
LED taillights and stop lights with smoked sport trim	—	—	S	S	—	—	—	—	—	—
Side rocker panels	S	S	—	—	S	S	S	S	S	S
Color-keyed front and rear underbody spoilers and side rocker panels	—	—	S	S	—	—	—	—	—	—
Sport mesh front grille with smoked chrome surround	—	—	S	S	—	—	—	—	—	—
Black power outside mirrors with integrated blind spot mirrors ²	S	—	—	—	—	—	—	—	—	—
Color-keyed heated power outside mirrors with integrated blind spot mirrors ²	—	S	S	—	—	—	—	—	S	—
Color-keyed heated power outside mirrors with blind spot warning indicators ³ and Rear Cross-Traffic Alert (RCTA) ⁴	—	P	P	S	S	S	—	—	—	S
Color-keyed heated power auto-dimming outside mirrors with turn signal and blind spot warning indicators ³ Rear Cross-Traffic Alert (RCTA) ⁴ puddle lights and power-folding, reverse tilt-down and memory features	—	—	—	—	—	—	S	S	—	—
Dual sliding side doors	S	—	—	—	—	—	—	—	—	—
Dual power sliding side doors with jam protection	—	S	—	—	—	—	—	—	—	—
Dual power sliding side doors and power liftgate with jam protection	—	—	S	S	S	S	S	S	S	S
Color-keyed outside door handles	—	S	—	—	—	—	—	—	S	—
Chrome-accented outside door handles	—	—	S	—	—	—	—	—	—	—
Chrome-accented outside door handles with touch-sensor lock/unlock feature	—	—	—	S	S	S	S	S	—	S
Black Sienna logo liftgate license garnish	S	—	—	—	—	—	—	—	—	—
Color-keyed Sienna logo liftgate license garnish	—	S	S	S	S	S	—	—	S	S
Chrome-accented Sienna logo liftgate license garnish	—	—	—	—	—	—	S	S	—	—
Power tilt/slide moonroof	—	—	O/P	S	S	S	—	—	—	S
Dual moonroof with front power tilt/slide and power rear slide	—	—	—	—	—	—	S	S	—	—
17-in. 5-spoke alloy wheels with P235/60R17 tires (FWD models only)	S	S	—	—	—	—	—	—	S	—
17-in. 7-spoke machined alloy wheels with P235/60R17 tires (FWD models only)	—	—	—	—	S	S	—	—	—	S
18-in. 10-spoke machined alloy wheels with P235/55R18 tires (FWD models only)	—	—	—	—	—	—	S	S	—	—
18-in. 10-spoke machined alloy wheels with P235/55RF18 tires (AWD models only)	—	S	—	—	S	S	S	S	—	—
18-in. 6-spoke gunmetal-finish alloy wheels with P235/50RF18 tires (AWD models only)	—	—	S	S	—	—	—	—	—	—
19-in. 6-spoke gunmetal-finish alloy wheels with P235/50R19 tires (FWD models only)	—	—	S	S	—	—	—	—	—	—
Washer-linked variable intermittent windshield wipers	S	S	S	S	S	S	S	—	S	S
Rain-sensing washer-linked variable intermittent windshield wipers	—	—	—	—	—	—	—	S	—	—
Windshield wiper de-icer	S	S	S	S	S	S	S	S	S	S
Privacy glass on rear windows	—	S	S	S	S	S	S	S	S	S
Black roof rails	—	S	S	S	S	S	S	S	S	S
Rear bumper protector	—	S	S	S	S	S	S	S	S	S
Color-keyed rear spoiler with LED center high-mount stop light and integrated concealed intermittent rear wiper	S	S	S	S	S	S	S	S	S	S
In-glass AM/FM antenna	S	S	S	S	S	S	S	S	S	S
Roof-mounted shark-fin antenna	S	S	S	S	S	S	S	S	S	S
Three-zone automatic climate control with air filter, individual temperature settings for driver, front passenger and rear-seat passengers, and separate rear digital control panel	S	S	S	S	S	S	S	S	S	S
Integrated backup camera ⁵	S	S	S	S	S	S	S	S	S	S

See numbered footnotes in Disclosures section.

S = Standard O = Optional — = Not Available P = Feature is available as part of an option package.

FEATURES (continued)

INTERIOR	L	LE	SE	SE PREMIUM	XLE	XLE PREMIUM	LIMITED	LIMITED PREMIUM	LE with Auto Access Seat	XLE with Auto Access Seat
Entune™ 3.0 ⁶ Audio with App Suite ⁶ — includes six speakers, 7-in. touch-screen, AM/FM, Scout® GPS Link ⁷ compatible with up to 3-year trial, ⁶⁰ Siri® Eyes Free ⁸ auxiliary port, USB 2.0 port ⁹ with iPod® ¹⁰ connectivity and control, hands-free phone capability, advanced voice recognition ¹¹ and music streaming ¹² via Bluetooth® ¹² wireless technology. See toyota.com/entune for details.	S	—	—	—	—	—	—	—	—	—
Entune™ 3.0 ⁶ Audio Plus with App Suite ⁶ — includes six speakers, 7-in. touch-screen, AM/FM, CD player, auxiliary port, USB 2.0 port ⁹ with iPod® ¹⁰ connectivity and control, advanced voice recognition, ¹¹ hands-free phone capability and music streaming ¹² via Bluetooth® ¹² wireless technology, Scout® GPS Link ⁷ compatible with up to 3-year trial, ⁶⁰ Siri® Eyes Free ⁸ HD Radio, ^{TM13} SiriusXM® ¹⁴ Satellite Radio with 3-month All Access trial ¹⁵ Toyota Connected Services — Safety Connect® ¹⁶ with 3-year trial subscription ⁶¹ and Wi-Fi Connect Powered by Verizon ¹⁷ with up to 2GB within 6-month trial. ⁶⁴ See toyota.com/entune for details.	—	S	S	—	S	—	—	—	S	S
Entune™ 3.0 ⁶ Premium Audio with Dynamic Navigation ¹⁸ and App Suite ⁶ — includes six speakers, 7-in. touch-screen, AM/FM, CD player, auxiliary port, USB 2.0 port ⁹ with iPod® ¹⁰ connectivity and control, Dynamic Navigation ¹⁸ with up to 3-year trial, ⁶² Dynamic POI Search, Dynamic Voice Recognition, hands-free phone capability and music streaming ¹² via Bluetooth® ¹² wireless technology, Siri® Eyes Free, ⁸ HD Radio, ^{TM13} SiriusXM® ¹⁴ Satellite Radio with 3-month All Access trial ¹⁵ Toyota Connected Services — Safety Connect® ¹⁶ with 3-year trial subscription, ⁶¹ Wi-Fi Connect Powered by Verizon ¹⁷ with up to 2GB within 6-month trial ⁶⁴ and Destination Assist Connect ¹⁹ with 6-month trial. ⁶³ See toyota.com/entune for details.	—	—	—	—	P	S	—	—	—	P
Entune™ 3.0 ⁶ Premium Audio with JBL® ²⁰ w/Clari-Fi, ^{TM20} Dynamic Navigation ¹⁸ and App Suite ⁶ — includes ten speakers including JBL subwoofer amplifier, 7-in. touch-screen, AM/FM, CD player, auxiliary port, USB 2.0 port ⁹ with iPod® ¹⁰ connectivity and control, Dynamic Navigation ¹⁸ with up to 3-year trial, ⁶² Dynamic POI Search, Dynamic Voice Recognition, hands-free phone capability and music streaming ¹² via Bluetooth® ¹² wireless technology, Siri® Eyes Free, ⁸ HD Radio, ^{TM13} SiriusXM® ¹⁴ Satellite Radio with 3-month All Access trial ¹⁵ Toyota Connected Services — Safety Connect® ¹⁶ with 3-year trial subscription, ⁶¹ Wi-Fi Connect Powered by Verizon ¹⁷ with up to 2GB within 6-month trial ⁶⁴ and Destination Assist Connect ¹⁹ with 6-month trial. ⁶³ See toyota.com/entune for details.	—	—	P	S	—	—	S	S	—	—
Bird's Eye View Camera ²¹ with Perimeter Scan, overhead 360-degree view in Drive and Reverse, and curb view	—	—	—	—	—	—	—	S	—	—
Driver Easy Speak — utilizes microphone in overhead console to amplify the driver's voice and broadcast it through rear speakers	—	—	P	S	P	S	S	S	—	P
Dual-View Blu-ray Disc™ Entertainment Center ²² with 16.4-in. display, SD card and HDMI inputs, two 120V AC power outlets, remote and two wireless headphones ²³	—	—	—	S	—	S	—	S	—	P
Fabric-trimmed front seats; 6-way adjustable driver's seat; 4-way adjustable front passenger seat	S	—	—	—	—	—	—	—	—	—
Easy-clean fabric-trimmed front seats with seatback pockets; 8-way power-adjustable driver's seat with power lumbar support; 4-way adjustable front passenger seat	—	S	—	—	—	—	—	—	S	—
Perforated leather-trimmed and multi-stage heated front seats and seatback pockets; 8-way power-adjustable driver's seat with power lumbar support; 4-way adjustable front passenger seat	—	—	S	S	—	—	—	—	—	—
Leather-trimmed and multi-stage heated front seats with seatback pockets; 8-way power-adjustable driver's seat with power lumbar support; 4-way power-adjustable front passenger seat	—	—	—	—	S	S	—	—	—	S
Premium leather-trimmed and multi-stage heated front seats with seatback pockets; 8-way power-adjustable driver's seat with driver memory function and power lumbar support; 4-way power-adjustable front passenger seat	—	—	—	—	—	—	S	S	—	—
7-passenger seating with removable fabric-trimmed second-row captain's chairs and tip-up and long-slide feature	S	—	—	—	—	—	—	—	—	—
7-passenger seating with removable easy-clean fabric-trimmed second-row captain's chairs and tip-up and long-slide feature on driver's side only	—	—	—	—	—	—	—	—	S	—
7-passenger seating with removable easy-clean fabric-trimmed second-row captain's chairs and tip-up and long-slide feature	—	S	—	—	—	—	—	—	—	—

See numbered footnotes in Disclosures section.

S = Standard O = Optional — = Not Available P = Feature is available as part of an option package.

FEATURES (continued)

INTERIOR (continued)	L	LE	SE	SE PREMIUM	XLE	XLE PREMIUM	LIMITED	LIMITED PREMIUM	LE with Auto Access Seat	XLE with Auto Access Seat
8-passenger seating with removable easy-clean fabric-trimmed 40/20/40 second-row seat, tip-up and long-slide feature and stowable center seat (FWD models only)	—	S	—	—	—	—	—	—	—	—
8-passenger seating with removable perforated leather-trimmed 40/20/40 second-row seat, tip-up and long-slide feature and stowable center seat (FWD models only)	—	—	S	S	—	—	—	—	—	—
8-passenger seating with removable leather-trimmed 40/20/40 second-row seat, tip-up and long-slide feature and stowable center seat (FWD models only)	—	—	—	—	S	S	—	—	—	—
7-passenger seating with removable leather-trimmed second-row captain's chairs with long-slide feature (AWD models only)	—	—	S	S	—	—	—	—	—	—
7-passenger seating with removable leather-trimmed second-row captain's chairs with long-slide feature (AWD models only)	—	—	—	—	S	S	—	—	—	—
7-passenger seating with removable leather-trimmed second-row captain's chairs and tip-up and long-slide feature on driver's side only	—	—	—	—	—	—	—	—	—	S
7-passenger seating with removable premium leather-trimmed second-row lounge seat ²⁴ captain's chairs with long-slide feature (FWD models only)	—	—	—	—	—	—	S	S	—	—
7-passenger seating with removable premium leather-trimmed second-row captain's chairs with long-slide feature (AWD models only)	—	—	—	—	—	—	S	S	—	—
Auto Access Seat	—	—	—	—	—	—	—	—	S	S
Fabric-trimmed 60/40 Split & Stow 3rd Row [®] seat with one-motion stow	S	S	—	—	—	—	—	—	S	—
Leatherette-trimmed 60/40 Split & Stow 3rd Row [®] seat with one-motion stow	—	—	S	S	S	S	—	—	—	S
Premium leatherette-trimmed 60/40 Split & Stow 3rd Row [®] seat (AWD models only)	—	—	—	—	—	—	O	O	—	—
Premium leatherette-trimmed power 60/40 Split & Stow 3rd Row [®] seat (FWD models only)	—	—	—	—	—	—	S	S	—	—
Dynamic Radar Cruise Control (DRCC) ²⁵	S	S	S	S	S	S	S	S	S	S
Tilt/telescopic steering wheel with audio, <i>Bluetooth</i> ^{®12} hands-free phone and voice-command controls	S	S	—	—	—	—	—	—	S	—
Leather-trimmed tilt/telescopic steering wheel with audio, <i>Bluetooth</i> ^{®12} hands-free phone and voice-command controls	—	—	S	S	S	S	—	—	—	S
Heated leather-trimmed tilt/telescopic steering wheel with audio, <i>Bluetooth</i> ^{®12} hands-free phone and voice-command controls	—	—	—	—	—	—	S	S	—	—
Speedometer, tachometer, coolant temperature and fuel gauges; 4.2-in. color TFT Multi-Information Display (MID) screen	S	S	—	—	S	S	S	S	S	S
Sport instrumentation with speedometer, tachometer, coolant temperature and fuel gauges; 4.2-in. color TFT Multi-Information Display (MID) screen	—	—	S	S	—	—	—	—	—	—
Remote keyless entry system with lock, two-stage unlock and panic functions	S	—	—	—	—	—	—	—	—	—
Remote keyless entry system with lock, two-stage unlock, panic and power sliding side door functions	—	S	—	—	—	—	—	—	—	—
Remote keyless entry system with lock, two-stage unlock, panic, power sliding side door and power liftgate functions	—	—	S	—	—	—	—	—	S	—
Smart Key System ²⁶ on all doors with Push Button Start and remote illuminated entry	—	P	P	S	S	S	S	S	—	S
Power windows with auto up/down, jam protection in all positions and manual rear quarter windows	S	S	S	S	—	—	—	—	S	—
Power windows with auto up/down, jam protection in all positions and power rear quarter windows	—	—	—	—	S	S	S	S	—	S
Heavy-duty rear window defogger with timer	S	S	S	S	S	S	S	S	S	S
Power door locks with shift-activated locking feature and anti-lockout feature	S	S	S	S	S	S	S	S	S	S
Manual second- and third-row sunshades	—	S	S	S	S	S	S	S	S	S
Auto-dimming rearview mirror with compass and HomeLink ^{®27} universal transceiver	—	S	S	S	S	S	S	S	S	S
Overhead console with maplights and dome lights, conversation mirror, sunglasses storage and Safety Connect ^{®16}	S	—	—	—	—	—	—	—	—	—
Overhead console with maplights and dome lights, side door controls, conversation mirror, sunglasses storage and Safety Connect ^{®16}	—	S	—	—	—	—	—	—	—	—
Overhead console with maplights and dome lights, side door and liftgate controls, conversation mirror, sunglasses storage and Safety Connect ^{®16}	—	—	S	S	S	S	S	S	S	S
Fixed center console with illuminated storage compartment, two front illuminated cup holders and two rear cup holders	—	S	S	S	—	—	—	—	S	—

See numbered footnotes in Disclosures section.

S = Standard O = Optional — = Not Available P = Feature is available as part of an option package.

FEATURES (continued)

INTERIOR (continued)	L	LE	SE	SE PREMIUM	XLE	XLE PREMIUM	LIMITED	LIMITED PREMIUM	LE with Auto Access Seat	XLE with Auto Access Seat
Fixed center console with wood-grain-style accents, illuminated storage compartment, two front illuminated cup holders and two rear cup holders	—	—	—	—	S	S	S ²⁸	S ²⁸	—	S
Sliding center console with wood-grain-style accents, illuminated storage compartment, two front illuminated cup holders and two rear cup holders (FWD models only)	—	—	—	—	—	—	S	S	—	—
Upper glove compartment and lockable lower glove compartment	S	S	S	S	S	S	S	S	S	S
Cargo area storage compartment	S	S ²⁸	—	—	S ²⁸	S ²⁸	S	S	S	—
Cargo area storage compartment for second-row center seat	—	S	S	S	S ²⁹	S ²⁹	—	—	—	S
Three 12V auxiliary power outlets	S	S	S	S	S	S	S	S	S	S
Five USB ports ⁹	S	—	—	—	—	—	—	—	—	—
Five USB ports ⁹ (second and third row for charging only)	—	S	S	S	S	S	S	S	S	S
Retractable assist grips at all outboard seating positions	S	S	S	S	S	S	S	S	S	S
Dual sun visors with illuminated vanity mirrors	S	S	S	S	S	S	S	S	S	S
Six cup holders (eight on 8-passenger models)	S	—	—	—	—	—	—	—	—	—
Ten cup holders (12 on 8-passenger models)	—	S	S	S	S	S	S	S	S	S
Front- and rear-door map pockets with bottle holders	S	S	S	S	S	S	S	S	S	S

SAFETY AND CONVENIENCE

<p>STAR SAFETY SYSTEM™ Star Safety System™ — includes Enhanced Vehicle Stability Control (VSC),³⁰ Traction Control (TRAC), Anti-lock Brake System (ABS), Electronic Brake-force Distribution (EBD), Brake Assist (BA)³¹ and Smart Stop Technology® (SST)³² Smart Stop Technology® is designed to automatically reduce engine power when both brake and accelerator pedals are pressed at the same time under certain conditions, helping to bring the vehicle to a stop.</p>	S	S	S	S	S	S	S	S	S	S
<p>Toyota Safety Sense™ P (TSS-P)³³ — includes Pre-Collision System³⁴ with Pedestrian Detection³⁵ (PCS w/PD), Lane Departure Alert with Steering Assist (LDA w/SA),³⁶ Automatic High Beams (AHB)³⁷ and Dynamic Radar Cruise Control (DRCC)²⁵</p>	S	S	S	S	S	S	S	S	S	S
Driver front airbag and front passenger Advanced Airbag System ³⁸	S	S	S	S	S	S	S	S	S	S
Driver and front passenger seat-mounted side airbags, driver knee airbag, front passenger seat-cushion airbag and all-row Roll-sensing Side Curtain Airbags ³⁸	S	S	S	S	S	S	S	S	S	S
Driver and front passenger active headrests ³⁹	S	S	S	S	S	S	S	S	S	S
3-point seatbelts for all seating positions; driver-side Emergency Locking Retractor (ELR) and Automatic/Emergency Locking Retractors (ALR/ELR) on all passenger seatbelts	S	S	S	S	S	S	S	S	S	S
Adjustable seatbelt anchors on front and outboard second-row seats, and driver and front passenger seatbelt pretensioners with force limiters	S	S	S	S	S	S	S	S	S	S
Four LATCH (Lower Anchors and Tethers for CHildren) locations: includes lower anchors on outboard second-row seats, and passenger-side and center third-row seats	S	S	S	S	S	S	S	S	S	S
Child-protector rear door locks	S	S	S	S	S	S	S	S	S	S
High-tensile-strength steel body panels	S	S	S	S	S	S	S	S	S	S
Front and rear energy-absorbing crumple zones and side-impact door beams	S	S	S	S	S	S	S	S	S	S
Tire Pressure Monitor System (TPMS) ⁴⁰	S	S	S	S	S	S	S	S	S	S
Daytime Running Lights (DRL) with on/off feature	S	S	—	—	S	S	—	—	S	S
LED Daytime Running Lights (DRL) with on/off feature	—	—	S	S	—	—	S	S	—	—
Safety Connect ^{®16} — includes Emergency Assistance, Stolen Vehicle Locator, Roadside Assistance and Automatic Collision Notification; with three-year trial subscription. ⁵¹ (Includes roof-mounted shark-fin antenna)	S	S	S	S	S	S	S	S	S	S
Rear parking assist sonar ⁴¹	—	—	P	S	P	S	—	—	—	P
Front and rear parking assist sonar ⁴¹	—	—	—	—	—	—	S	S	—	—
Blind Spot Monitor (BSM) ³ with Rear Cross-Traffic Alert (RCTA) ⁴	—	P	P	S	S	S	S	S	—	S
Hill Start Assist Control (HAC) ⁴²	S	S	S	S	S	S	S	S	S	S
Engine immobilizer ⁴³	S	S	S	S	—	—	—	—	S	—
Anti-theft system with alarm and engine immobilizer ⁴³	—	—	—	—	S	S	S	S	—	S
ToyotaCare ⁴⁴ featuring a no cost maintenance plan with roadside assistance ⁴⁵	S	S	S	S	S	S	S	S	S	S

See numbered footnotes in Disclosures section.

S = Standard O = Optional — = Not Available P = Feature is available as part of an option package.

SPECIFICATIONS

MECHANICAL AND PERFORMANCE	L	LE	SE/ SE PREMIUM	XLE/ XLE PREMIUM	LIMITED/ LIMITED PREMIUM	LE with Auto Access Seat	XLE with Auto Access Seat
ENGINE							
3.5-Liter V6 DOHC 24-Valve with Dual VVT-i; 296 hp @ 6600 rpm, 263 lb.-ft. @ 4700 rpm	Standard	Standard	Standard	Standard	Standard	Standard	Standard
IGNITION							
Electronic, with Toyota Direct Ignition (TDI)	Standard	Standard	Standard	Standard	Standard	Standard	Standard
EMISSION RATING							
Ultra Low Emission Vehicle III (ULEV-III)	Standard	Standard	Standard	Standard	Standard	Standard	Standard
TRANSMISSION							
Direct Shift-8AT Electronically Controlled automatic Transmission with intelligence (ECT-i)	Standard	Standard	Standard	Standard	Standard	Standard	Standard
DRIVETRAIN							
Front-Wheel Drive (FWD)	Standard	Standard	Standard	Standard	Standard	Standard	Standard
All-Wheel Drive (AWD) with active torque control	NA	Available	Available	Available	Available	NA	NA
BODY CONSTRUCTION							
Unitized body with anti-vibration sub-frame	Standard	Standard	Standard	Standard	Standard	Standard	Standard
SUSPENSION							
MacPherson strut front suspension with gas-filled shock absorbers and stabilizer bar; twist-beam rear suspension with coil springs (sport-tuned coil springs on SE model), gas-filled shock absorbers and stabilizer bar	Standard	Standard	Standard	Standard	Standard	Standard	Standard
STEERING							
Electric Power Steering (EPS)	Standard	Standard	NA	Standard	Standard	Standard	Standard
Sport-calibrated Electric Power Steering (EPS)	NA	NA	Standard	NA	NA	NA	NA
TURNING CIRCLE DIAMETER curb to curb (ft.) (V6 FWD/V6 AWD)							
	37.5/NA	37.5/37.4	37.5/37.5	37.5/37.4	37.5/37.4	36.9/NA	36.9/NA
BRAKES							
Power-assisted ventilated front and rear disc brakes with Star Safety System™	Standard	Standard	Standard	Standard	Standard	Standard	Standard
EXTERIOR DIMENSIONS (in.)							
Overall length/width	200.6/78.1	200.6/78.1	200.6/78.1	200.6/78.1	200.6/78.1	200.6/78.1	200.6/78.1
Overall height (V6 FWD/V6 AWD) unloaded without roof rails; unloaded with roof rails	68.9/NA; NA	NA; 70.7/71.3	NA; 70.5/68.7	NA; 70.7/71.3	NA; 70.7/71.3	NA; NA; NA	NA; NA; NA
Wheelbase	119.3	119.3	119.3	119.3	119.3	119.3	119.3
Track (front/rear)	67.7/67.7	67.7/67.7	67.7/67.7	67.7/67.7	67.7/67.7	67.7/67.7	67.7/67.7
Ground clearance (V6 FWD/V6 AWD)	6.5/NA	6.5/6.6	6.2/6.2	6.5/6.6	6.5/6.6	6.5/NA	6.5/NA
Coefficient of drag (Cd) (V6 FWD/V6 AWD)	.30/NA	.30/.31	.31/.31	.30/.31	.30/.31	0.30/NA	0.31/NA
INTERIOR DIMENSIONS front/second-row/third-row seats (in.)							
Head room with moonroof; with dual moonroof	41.0/39.7/38.3 NA; NA	41.0/39.7/38.3 NA; NA	41.0/39.7/38.3 39.1/39.7/38.3; NA	NA 39.1/39.7/38.3; NA	NA NA; 39.1/38.0/35.9	41.0/39.7/38.3 NA; NA	NA 39.1/39.7/38.3; NA
Shoulder room	65.0/64.6/61.1	65.0/64.6/61.1	65.0/64.6/61.1	65.0/64.6/61.1	65.0/64.6/61.1	65.0/64.6/61.1	65.0/64.6/61.1
Hip room	58.6/66.1/50.3	58.6/66.1/50.3	58.6/66.1/50.3	58.6/66.1/50.3	58.6/66.1/50.3	58.6/66.1/50.3	58.6/66.1/50.3
Leg room	40.5/37.6/36.3	40.5/37.6/36.3	40.5/37.6/36.3	40.5/37.6/36.3	40.5/37.6/36.3	40.5/37.6/36.3	40.5/37.6/36.3
WEIGHTS/CAPACITIES							
Curb weight (lb.) V6 FWD/V6 AWD	4430/NA	4505/4655	4605/4605	4590/4750	4615/4750	NA/NA	NA/NA
Cargo volume ⁴⁶ (cu. ft.) behind front/second-row/third-row seats	150.0/87.1/39.1	150.0/87.1/39.1	150.0/87.1/39.1	150.0/87.1/39.1	150.0/87.1/39.1	150.0/87.1/39.1	150.0/87.1/39.1
Fuel tank (gal.)	20	20	20	20	20	20	20
Seating capacity (FWD/AWD)	7/NA	8/7	8/7	8/7	7/7	7/NA	7/NA

See numbered footnotes in Disclosures section.

SPECIFICATIONS (continued)

TOWING	L	LE	SE/ SE PREMIUM	XLE/ XLE PREMIUM	LIMITED/ LIMITED PREMIUM	LE with Auto Access Seat	XLE with Auto Access Seat
Tow Prep Package — includes engine oil cooler, plus heavy-duty radiator and fan; tow hitch and receiver not included V6 FWD/V6 AWD	Standard/NA	Standard/Standard	Standard/Standard	Standard/Standard	Standard/Standard	Standard/NA	Standard/NA
Towing capacity (lb.) ⁴⁷ V6 FWD/V6 AWD	3500/NA	3500/3500	3500/3500	3500/3500	3500/3500	3500/NA	3500/NA
TIRES							
Spare — Temporary Run-flat tires	Standard NA	Standard Optional ⁴⁸	Standard Optional ⁴⁸	Standard Optional ⁴⁸	Standard Optional ⁴⁸	Standard NA	Standard NA
MILEAGE ESTIMATES (city/highway)							
V6 FWD ⁴⁹ ; V6 AWD ⁵⁰	19/27; NA	19/27; 18/24	19/27; 18/24	19/27; 18/24	19/27; 18/24	19/27; NA	19/27; NA

PACKAGES/OPTIONS

LE

LE Preferred Package — includes Blind Spot Monitor (BSM)³ with Rear Cross-Traffic Alert (RCTA),⁴ Smart Key System²⁶ on all doors with Push Button Start and remote illuminated entry

SE

SE Preferred Package — includes Blind Spot Monitor (BSM)³ with Rear Cross-Traffic Alert (RCTA),⁴ Smart Key System²⁶ on all doors with Push Button Start and remote illuminated entry, chrome-accented outside door handles with touch-sensor lock/unlock feature, power tilt/slide moonroof with sunshade, Entune™ 3.0⁶ Premium Audio with JBL®²⁰ w/Clari-Fi™²⁰ Dynamic Navigation¹⁸ and App Suite⁵ — includes ten speakers, 7-in. touch-screen, AM/FM, CD player, auxiliary port, USB 2.0 port⁹ with iPod®¹⁰ connectivity and control, Dynamic Navigation¹⁸ with up to 3-year trial,⁶² Dynamic POI Search, Dynamic Voice Recognition, hands-free phone capability and music streaming¹² via Bluetooth®¹² wireless technology, Siri® Eyes Free,⁸ HD Radio,⁷ SiriusXM®¹⁴ Satellite Radio with 3-month All Access trial,¹⁵ Toyota Connected Services — Safety Connect®¹⁶ with 3-year trial subscription,⁶¹ Wi-Fi Connect Powered by Verizon¹⁷ with up to 2GB within 6-month trial⁶⁴ and Destination Assist Connect¹⁹ with 6-month trial.⁶³ See toyota.com/entune for details.

Power tilt/slide moonroof with sunshade

XLE

XLE Mobility Navigation Package — includes rear parking assist sonar,⁴¹ Entune™ 3.0⁶ Premium Audio with Dynamic Navigation¹⁸ and App Suite⁶ — includes six speakers, 7-in. touch-screen, AM/FM, CD player, auxiliary port, USB 2.0 port⁹ with iPod®¹⁰ connectivity and control, Dynamic Navigation¹⁸ with up to 3-year trial,⁶² Dynamic POI Search, Dynamic Voice Recognition, hands-free phone capability and music streaming¹² via Bluetooth®¹² wireless technology, Siri® Eyes Free,⁸ HD Radio,⁷ SiriusXM®¹⁴ Satellite Radio with 3-month All Access trial,¹⁵ Toyota Connected Services — Safety Connect®¹⁶ with 3-year trial subscription,⁶¹ Wi-Fi Connect Powered by Verizon¹⁷ with up to 2GB within 6-month trial⁶⁴ and Destination Assist Connect¹⁹ with 6-month trial.⁶³ See toyota.com/entune for details.

XLE Navigation Package — includes rear parking assist sonar,⁴¹ Entune™ 3.0⁶ Premium Audio with Dynamic Navigation¹⁸ and App Suite⁶ — includes six speakers, 7-in. touch-screen, AM/FM, CD player, auxiliary port, USB 2.0 port⁹ with iPod®¹⁰ connectivity and control, Dynamic Navigation¹⁸ with up to 3-year trial,⁶² Dynamic POI Search, Dynamic Voice Recognition, hands-free phone capability and music streaming¹² via Bluetooth®¹² wireless technology, Siri® Eyes Free,⁸ HD Radio,⁷ SiriusXM®¹⁴ Satellite Radio with 3-month All Access trial,¹⁵ Toyota Connected Services — Safety Connect®¹⁶ with 3-year trial subscription,⁶¹ Wi-Fi Connect Powered by Verizon¹⁷ with up to 2GB within 6-month trial⁶⁴ and Destination Assist Connect¹⁹ with 6-month trial.⁶³ See toyota.com/entune for details.

XLE Mobility Premium Package — includes Dual-View Blu-ray Disc™ Entertainment Center²² with 16.4-in. display, SD card and HDMI inputs, two 120V AC power outlets, remote and two wireless headphones,²³ rear parking assist sonar,⁴¹ Driver Easy Speak and Entune™ 3.0⁶ Premium Audio with Dynamic Navigation¹⁸ and App Suite⁶ — includes six speakers, 7-in. touch-screen, AM/FM, CD player, auxiliary port, USB 2.0 port⁹ with iPod®¹⁰ connectivity and control, Dynamic Navigation¹⁸ with up to 3-year trial,⁶² Dynamic POI Search, Dynamic Voice Recognition, hands-free phone capability and music streaming¹² via Bluetooth®¹² wireless technology, Siri® Eyes Free,⁸ HD Radio,⁷ SiriusXM®¹⁴ Satellite Radio with 3-month All Access trial,¹⁵ Toyota Connected Services — Safety Connect®¹⁶ with 3-year trial subscription,⁶¹ Wi-Fi Connect Powered by Verizon¹⁷ with up to 2GB within 6-month trial⁶⁴ and Destination Assist Connect¹⁹ with 6-month trial.⁶³ See toyota.com/entune for details.

CARS BUILT FOR THE WAY YOU LIVE

At Toyota, we build cars for how you live. From building advanced safety features designed to help prevent crashes to driving cross-country to understand how we can make your driving experience better, our work starts with understanding your needs. Building cars for how you live also means thinking about tomorrow — from fuel efficiency and environmental innovations, to things beyond cars, like a bicycle that you can control with your mind. And because what we learn building cars can help improve lives in other places, we do things like help communities rebuild their homes quickly after a disaster and work with soup kitchens to help them serve more people faster. Toyota. Built for how you live. Together we are going places.

DISCLOSURES

1. Toyota strives to build vehicles to match customer interest and thus they typically are built with popular options and option packages. Not all options/packages are available separately and some may not be available in all regions of the country. If you would prefer a vehicle with no or different options, contact your dealer to check for current availability or the possibility of placing a special order. **2.** Do not rely exclusively on the blind-spot mirror. Always look over your shoulder and use your turn signal. There are limitations to the function of the mirror. See *Owner's Manual* for additional limitations and details. **3.** Do not rely exclusively on the Blind Spot Monitor. Always look over your shoulder and use your turn signal. There are limitations to the function, detection and range of the monitor. See *Owner's Manual* for additional limitations and details. **4.** Do not rely exclusively on the Rear Cross-Traffic Alert system. Always look over your shoulder and use your mirrors to confirm rear clearance. There are limitations to the function, detection and range of the system. See *Owner's Manual* for additional limitations and details. **5.** The backup camera does not provide a comprehensive view of the rear area of the vehicle. You should also look around outside your vehicle and use your mirrors to confirm rearward clearance. Environmental conditions may limit effectiveness and view may become obscured. See *Owner's Manual* for additional limitations and details. **6.** Be sure to obey traffic regulations and maintain awareness of road and traffic conditions at all times. Apps/services vary by phone/carrier; functionality depends on many factors. Select apps use large amounts of data; you are responsible for charges. Apps and services subject to change. See toyota.com/entune for details. **7.** The Scout® GPS Link App is available only in Toyota vehicles equipped with Entune™ Premium systems. Once downloaded, the Scout® GPS Link App three-year trial begins upon your first connection with Entune® App Suite after you have synced with the Scout® GPS Link App with your Bluetooth®-enabled phone. Availability and accuracy of the information provided by Scout® GPS Link is dependent upon many factors. Use common sense when relying on information provided. Services and programming subject to change. Services not available in every city or roadway. Subscription required after end of three-year complimentary service. See toyota.com/entune for details. Scout® is a registered trademark of Telenav, Inc. **8.** Always drive safely, obey traffic laws and focus on the road while driving. Siri® is available on select iPhone®/iPad® models and requires Internet access. Siri® is not available in all languages or all areas and features vary by area. Some Siri® functionality and commands are not accessible in the vehicle. Data charges may apply. See apple.com and phone carrier for details. Siri® is a registered trademark of Apple Inc. **9.** May not be compatible with all mobile phones, MP3/WMA players and like models. **10.** iPod® and iPhone® are registered trademarks of Apple Inc. All rights reserved. **11.** Advanced voice recognition capabilities vary by head unit. **12.** The Bluetooth® word mark and logos are registered trademarks owned by Bluetooth SIG, Inc., and any use of such marks by Toyota is under license. A compatible Bluetooth®-enabled phone must first be paired. Phone performance depends on software, coverage and carrier. **13.** HD Radio™ Technology manufactured under license from iBiquity Digital Corporation U.S. and Foreign Patents. HD Radio™ and the HD, HD Radio, and "Arc" logos are proprietary trademarks of iBiquity Digital Corp. **14.** SiriusXM® audio services require a subscription sold separately by Sirius XM Radio Inc. If you decide to continue service after your trial, the subscription plan you choose will automatically renew thereafter and you will be charged according to your chosen payment method at then-current rates. Fees and taxes apply. To cancel, you must call SiriusXM at 1-866-635-2349. See SiriusXM Customer Agreement for complete terms at www.siriusxm.com. All fees and programming subject to change. Not all vehicles or devices are capable of receiving all services offered by SiriusXM. Current information and features may not be available in all locations, or on all receivers. ©2018 Sirius XM Radio Inc. SiriusXM and all related marks and logos are trademarks of Sirius XM Radio Inc. **15.** Trial length and service availability may vary by model, model year or trim. **16.** Toyota Entune™ 3.0 services are dependent upon an operative telematics device, a cellular connection, navigation map data and GPS satellite signal reception, which can limit the ability to reach the response center or receive emergency support. Terms and conditions of subscriber agreement apply. To learn about Toyota Entune™ 3.0's data collection, use, sharing and retention, please visit <https://www.toyota.com/privacyvts/>. Stolen vehicle police report required to use Stolen Vehicle Locator. **17.** Verizon Wireless is the network provider for Wi-Fi Connect, which uses Verizon's 4G LTE network to transmit data. Data usage applies. Coverage not available everywhere; see vzw.com. See verizonwireless.com/bestnetwork for details. LTE is a trademark of ETSI. Other terms apply. Up to 5 devices can be supported using in-vehicle connectivity. Verizon Wireless data subscription required upon end of 6-month trial period or use of 2 GB data (whichever comes first). Use of Wi-Fi Connect subject to Verizon Wireless' Customer Agreement (verizonwireless.com/legal/notices/customer-agreement/), Privacy Policy (verizon.com/about/privacy/privacy-policy-summary), and data use policies (verizonwireless.com/support/vz-email-legal/). **18.** Availability and accuracy of the information provided by the Dynamic Navigation system is dependent upon many factors. Use common sense when relying on information provided. Services and programming subject to change. Services not available in every city or roadway. See *Owner's Manual* for details. **19.** Availability and accuracy of the information provided is dependent upon many factors. Use common sense when relying on this information. Services and programming subject to change. Service not available in every city or roadway. See *Owner's Manual* for details. **20.** JBL® and Clari-Fi™ are registered trademarks of Harman International Industries, Incorporated. **21.** The Bird's-Eye-View Camera does not provide a comprehensive view of the area surrounding the vehicle. You should also look around outside your vehicle and use your mirrors to confirm surrounding clearance. Environmental conditions may limit effectiveness and view may become obscured. See *Owner's Manual* for additional limitations and details. **22.** A Blu-ray Disc™/DVD player is standard. A separate Blu-ray Disc™/DVD player or game system utilizing the center console's video/audio inputs is required in order to use the split-screen function of the Dual-View system. **23.** Headphones are for passenger use only. Do not use while operating vehicle. **24.** Lounge seating is standard on Sienna Limited FWD and not available on any other models. Do not use the ottoman feature when the vehicle is in motion. Only use when the vehicle is stationary. If the ottoman feature is in use during an accident, the lap belt may slide past the hips. This could result in restraint forces being applied directly to the abdomen, or your neck may contact the shoulder belt, increasing the risk of death or serious injury. See *Owner's Manual* for details. **25.** Dynamic Radar Cruise Control is designed to assist the driver and is not a substitute for safe and attentive driving practices. System effectiveness is dependent on many factors including road, weather and traffic conditions. See *Owner's Manual* for additional limitations and details. **26.** The Smart Key System may interfere with some pacemakers or cardiac defibrillators. If you have one of these medical devices, please talk to your doctor to see if you should deactivate this system. **27.** HomeLink® and the HomeLink® house icon are registered trademarks of Gentex Corporation. **28.** AWD models only. **29.** Not available on AWD models. **30.** Vehicle Stability Control is an electronic system designed to help the driver maintain vehicle control under adverse conditions. It is not a substitute for safe and attentive driving practices. Factors including speed, road conditions, weather and driver steering input can all affect whether VSC will be effective in preventing a loss of control. See *Owner's Manual* for additional limitations and details. **31.** Brake Assist is designed to help the driver take full advantage of the benefits of ABS. It is not a substitute for safe driving practices. Braking effectiveness also depends on proper vehicle maintenance, and tire and road conditions. See *Owner's Manual* for additional limitations and details. **32.** Smart Stop Technology® operates only in the event of certain contemporaneous brake and accelerator pedal applications. When engaged, the system will reduce power to help the brakes bring the vehicle to a stop. Factors including speed, road conditions and driver input can all impact stopping distance. Smart Stop Technology® is not a substitute for safe and attentive driving and does not guarantee instant stopping. See *Owner's Manual* for details. **33.** Drivers are responsible for their own safe driving. Always pay attention to your surroundings and drive safely. System effectiveness is dependent on many factors including road, weather and vehicle conditions. See *Owner's Manual* for additional limitations and details. **34.** The TSS Pre-Collision System is designed to help avoid or reduce the crash speed and damage in certain frontal collisions only. It is not a substitute for safe and attentive driving. System effectiveness is dependent on many factors including road, weather and vehicle conditions. See *Owner's Manual* for additional limitations and details. **35.** The Pedestrian Detection system is designed to detect a pedestrian ahead of the vehicle, determine if impact is imminent and help reduce impact speed. It is not a substitute for safe and attentive driving. System effectiveness depends on many factors, such as speed, size and position of pedestrians, and weather, light and road conditions. See *Owner's Manual* for additional limitations and details. **36.** Lane Departure Alert with Steering Assist is designed to read visible lane markers under certain conditions. It provides a visual and audible alert, and slight steering force when lane departure is detected. It is not a collision-avoidance system or a substitute for safe and attentive driving. Effectiveness is dependent on many factors including road, weather and vehicle conditions. See *Owner's Manual* for additional limitations and details. **37.** Automatic High Beams operate at speeds above 25 mph. Factors such as a dirty windshield, weather, lighting and terrain limit effectiveness, requiring the driver to manually operate the high beams. See *Owner's Manual* for additional limitations and details. **38.** All the airbag systems are Supplemental Restraint Systems. All airbags (if installed) are designed to inflate only under certain conditions and in certain types of severe collisions. To decrease the risk of injury from an inflating airbag, always wear seatbelts and sit upright in the middle of the seat as far back as possible. Do not put objects in front of an airbag or around the seatback. Do not use a rearward-facing child seat in any front passenger seat. See *Owner's Manual* for additional limitations and details. **39.** Active front headrests can help reduce the extent of whiplash in certain types of rear-end collisions. **40.** The Tire Pressure Monitor System alerts the driver when tire pressure is critically low. For optimal tire wear and performance, tire pressure should be checked regularly with a gauge; do not rely solely on the monitor system. See *Owner's Manual* for details.

DISCLOSURES (continued)

41. Parking assist sonar is designed to assist drivers in avoiding potential collisions at speeds of 9 mph or less. Certain vehicle and environmental factors, including an object's shape and composition, may affect the ability of the parking assist sonar to detect it. Always look around outside the vehicle and use mirrors to confirm clearance. See *Owner's Manual* for additional limitations and details. **42.** Hill Start Assist Control is designed to help minimize backward rolling on steep ascents. It is not a substitute for safe driving judgment and practices. Factors including speed, grade, surface conditions and driver input can all affect whether HAC will be effective in preventing a loss of control. See *Owner's Manual* for additional limitations and details. **43.** The engine immobilizer is a state-of-the-art anti-theft system. When you insert your key into the ignition switch or bring a Smart Key fob into the vehicle, the key transmits an electronic code to the vehicle. The engine will only start if the code in the transponder chip inside the key/fob matches the code in the vehicle's immobilizer. Because the transponder chip is embedded in the key/fob, it can be costly to replace. If you lose a key or fob, your Toyota dealer can help. Alternatively, you can find a qualified independent locksmith to perform high-security key services by consulting your local Yellow Pages or by contacting www.aloa.org. **44.** ToyotaCare plan covers normal factory scheduled service for 2 years or 25K miles, whichever comes first. See Toyota dealer for details and exclusions. Valid only in the continental U.S. and Alaska. **45.** Roadside Assistance coverage is 2 years unlimited mileage. Does not include parts and fluids, except emergency fuel delivery. See Toyota dealer for details and exclusions. Valid only in the continental U.S. and Alaska. **46.** Cargo and load capacity limited by weight and distribution. **47.** Before towing, confirm your vehicle and trailer are compatible, hooked up and loaded properly and that you have any necessary additional equipment. Do not exceed any Weight Ratings and follow all instructions in your *Owner's Manual*. The maximum you can tow depends on base curb weight plus the total weight of any cargo, occupants, and added vehicle equipment. "Added vehicle equipment" includes additional standard/optional equipment and accessories added by the manufacturer, dealers, and/or vehicle owners. The only way to be certain of your vehicle's exact curb weight is to weigh your vehicle without passengers or cargo. **48.** Sienna AWD models come standard with run-flat tires—there is no spare tire. **49.** 2019 Sienna FWD preliminary 19 city/27 hwy/22 combined mpg estimates determined by Toyota. EPA ratings not available at time of posting. Actual mileage will vary. **50.** 2019 Sienna AWD preliminary 18 city/24 hwy/20 combined mpg estimates determined by Toyota. EPA ratings not available at time of posting. Actual mileage will vary. **51.** Roof rack with cross bars is not recommended for luggage. **52.** This floor mat/floor liner was designed specifically for use in your model and model year vehicle and SHOULD NOT be used in any other vehicle. To avoid potential interference with pedal operation, each floor mat/floor liner must be secured with its fasteners. Do not install a floor mat/floor liner on top of an existing floor mat/floor liner. **53.** Apple CarPlay® is a registered trademark of Apple Inc. **54.** Apps and services subject to change. **55.** Amazon, Alexa, and all related logos and marks are trademarks of Amazon.com, Inc. or its affiliates. Not all Amazon Alexa skills are available for in-vehicle use. **56.** Extra-color. **57.** The Toyota Genuine Accessory Warranty will only apply when the installation is performed by a trained Toyota-approved installer. Please see dealer for details. **58.** Use only if aware of circumstances surrounding the vehicle at time of start. Operate only when safe to do so (e.g., do not remotely start engine if vehicle is in an enclosed space or is occupied by a child). See *Owner's Manual* for limitations and details. **59.** Available only for vehicles with factory remote keyless entry systems. **60.** The Scout® GPS Link trial is at no extra cost and begins when the app is downloaded on the vehicle. Contact the Toyota Customer Experience Center at 800-331-4331 for length of trial period. After the trial period expires, enrollment in a paid subscription is required to access the service. Terms and conditions apply. **61.** The Safety Connect® trial period is at no extra cost and begins on the original date of purchase or lease of a new vehicle. After the trial period expires, enrollment in paid subscription is required to access the service. Terms and conditions apply. **62.** The Dynamic Navigation three-year trial begins the earlier of when the vehicle hits 100 miles or a year after the multimedia system manufacture date, regardless of when you purchase or lease the vehicle. Terms and conditions of subscription service agreement apply. **63.** The Destination Assist trial period is at no extra cost and begins on the original date of purchase or lease of a new vehicle. After the trial period expires, enrollment in a paid subscription is required to access the service. Terms and conditions of subscription service agreement apply. **64.** The Wi-Fi Connect trial period is at no extra cost and begins on the date of activation. After the trial period expires, enrollment in a paid subscription is required to access the service. Terms and conditions apply.

Toyota strives to build vehicles to match customer interest and thus they typically are built with popular options and option packages. Not all options/packages are available separately and some may not be available in all regions of the country. See toyota.com for information about options/packages commonly available in your area. If you would prefer a vehicle without any or with different options, contact your dealer to check for current availability or the possibility of placing a special order.

Some vehicles are shown with available equipment. Seatbelts should be worn at all times. Please do not allow passengers to ride in the cargo area. For details on vehicle specifications, standard features and available equipment in your area, contact your Toyota dealer. A vehicle with particular equipment may not be available at the dealership. Ask your Toyota dealer to help locate a specifically equipped vehicle.

All information presented herein is based on data available at the time of posting, is subject to change without notice and pertains specifically to mainland U.S.A. vehicles only. Prototypes shown. Actual production vehicles will vary.

WARRANTIES

Every Toyota Car, Truck and SUV is built to exceptional standards. And that's not idle boasting. We back it up with these Limited Warranty Coverages:

Basic: 36 months/36,000 miles (all components other than normal wear and maintenance items).

Powertrain: 60 months/60,000 miles (engine, transmission/transaxle, drive system, seatbelts and airbags).

Rust-Through: 60 months/unlimited miles (corrosion perforation of sheet metal).

Emissions: Coverages vary under Federal and California regulations. Refer to applicable *Warranty and Maintenance Guide* for details.

Accessories: For Genuine Toyota Accessories purchased at the time of the new vehicle purchase, the Toyota Accessory Warranty coverage is in effect for 36 months/36,000 miles from the vehicle's in-service date, which is the same coverage as the Toyota New Vehicle Limited Warranty.

For Genuine Toyota Accessories purchased after the new vehicle purchase the coverage is 12 months, regardless of mileage, from the date the accessory was installed on the vehicle, or the remainder of any applicable new vehicle warranty, whichever provides greater coverage.

You may be eligible for transportation assistance if it's necessary that your vehicle be kept overnight for repairs covered under warranty. Please see your authorized Toyota dealership for further details.

For complete details about Toyota's warranties, please visit www.toyota.com, refer to the applicable *Warranty and Maintenance Guide* or see your Toyota dealer.



For Toyota Mobility program details, go to www.toyota.com/mobility or call the Toyota Customer Assistance Center at 1-800-331-4331