

Go Further



Ford 2017 C-MAX

C-MAX

STYLE. SPIRIT. SPACE TO SPARE.

Enjoy them all in C-MAX Hybrid and C-MAX Energi Plug-In Hybrid. With a versatile interior, ready for people or cargo, you've found a perfect place to enjoy SYNC® 3¹ voice-activated technology, now compatible with Apple CarPlay™ and Android Auto™. Fuel-efficient.² Fun to drive. It's easy to go further in the 2017 Ford C-MAX.



2017 Ford C-MAX | ford.com

C-MAX Hybrid SE in Magnetic. C-MAX Energi Titanium in Ruby Red Metallic Tinted Clearcoat. Both with available equipment. ¹Available feature. Don't drive while distracted. Use voice-operated systems when possible; don't use handheld devices while driving. Some features may be locked out while the vehicle is in gear. Not all features are compatible with all phones. Message and data rates may apply. ²EPA-estimated rating of 42 city/38 hwy/40 combined mpg, C-MAX Hybrid, actual mileage will vary; EPA-estimated rating of 104 city/87 hwy/95 combined MPGe, C-MAX Energi, actual mileage will vary. MPGe is the EPA equivalent measure of gasoline fuel efficiency for electric mode operation.



C-MAX HYBRID

MAXIMIZE EVERY RIDE.



Drive efficiently and watch your leaves grow.



Dramatization. Actual mileage will vary.

"The... C-MAX's responsive handling, smooth ride, sleek interior and long list of features continue to make it a standout..." said editors at Edmunds.com. Truly engaging to drive, both C-MAX Hybrid and C-MAX Energi Plug-In Hybrid offer 188 combined horsepower. Transfer this power and 129 lb.-ft. of torque to the road with an eCVT (electronically controlled continuously variable transmission).

Switching seamlessly between its 88-kW electric traction motor and 2.0L Atkinson-cycle I-4 gasoline engine, the C-MAX power-split hybrid architecture is powered by a lithium-ion battery. All-electric mode works at speeds of up to 85 mph, since C-MAX engages its engine only as needed to power the battery and to enhance performance. An invigorating drive. Excellent efficiency! The 2017 C-MAX Hybrids bring it all together.

2017 Ford C-MAX | ford.com

C-MAX Hybrid Titanium in Kona Blue with available equipment. ¹EPA-estimated rating of 42 city/38 hwy/40 combined mpg, C-MAX Hybrid, actual mileage will vary; EPA-estimated rating of 104 city/87 hwy/95 combined MPGe, C-MAX Energi, actual mileage will vary. MPGe is the EPA equivalent measure of gasoline fuel efficiency for electric mode operation.



C-MAX ENERGI

TAKE CHARGE OF YOUR FUTURE.

Think of C-MAX Energi Plug-In Hybrid as a “hybrid plus” that gives you the choice to plug in or not. Plugging in helps you plus up to an EPA-estimated 104 city MPGe, an all-electric driving range of up to 20 miles, and a gas-plus-electric driving range of 570 miles! Three selectable Electric Vehicle (EV) modes let you choose which mode to drive in – electric only (EV Now), gasoline only (EV Later), or a combination of battery power and gasoline engine (EV Auto).

Recharge at home in about 7 hours² using its LED-illuminated charge port and the standard 120V convenience charge cord. Shorten that time to about 2.5 hours² using a Ford-recommended AeroVironment™ 240V home charging station³ or 240V TurboCord™³. The UL-listed, weather-resistant, portable charging station is easy to take with you if you decide to relocate. A hard-wired station³ is also available.

Easily monitor and schedule charging with the MyFord® Mobile app⁴ and myfordmobile.com website. You can also access battery charge status, lock and unlock your doors, initiate preconditioning of your vehicle cabin, and even locate your vehicle in a crowded parking lot. Download the app on the App Store® and Google Play.™



2017 Ford C-MAX | ford.com

C-MAX Energi Titanium in Ruby Red Metallic Tinted Clearcoat with available equipment. Available 240V home charging station shown. ¹EPA-estimated rating of 104 city/87 hwy/95 combined MPGe. Actual mileage will vary. MPGe is the EPA equivalent measure of gasoline fuel efficiency for electric mode operation. EPA-estimated rating of 41 city/38 hwy/39 combined mpg, 14.0-gallon fuel tank; 20 miles electric. Range calculation based on www.fueleconomy.gov. Actual range varies with conditions such as external elements, driving behaviors, vehicle maintenance and lithium-ion battery age. ²Charge times vary. See owner's manual for details. ³Available feature. To begin the process, call 1-888-219-6747 or visit evolutions.com/ford. Charging stations are available with or without full installation services by AeroVironment. ⁴MyFord Mobile subscription complimentary for 5 years from the vehicle sale date as recorded by the dealer. Subscription fees apply after 5 years. MyFord Mobile requires a compatible cellular network. Evolving technology and cellular networks may affect future availability and functionality. Message and data rates may apply.





SYNC 3

In addition to all the voice-activated benefits of SYNC^{®1} – placing and answering calls, and controlling music from your devices – you'll love the easy-to-use interface of SYNC 3.^{1,2} An 8" color LCD screen displays phone, audio and navigation² features. Enhanced voice recognition lets you give simple commands. A capacitive touchscreen includes a convenient swipe feature, as well as pinch-to-zoom functionality within navigation.² SYNC 3 also brings you the options of Apple CarPlay^{TM3} and Android Auto.^{TM4}

Voice-Activated Navigation System²

Includes a 5-year complimentary trial subscription to SiriusXM[®] Traffic and Travel Link[®] services.⁵ Global Positioning System (GPS) technology is combined with available 3-D mapping and provides voice-guided turn-by-turn directions. You'll get detailed traffic information, plus current and forecasted weather and fuel station locations and prices.

SYNC AppLink

Use your voice to control some of your favorite compatible mobile apps (like Pandora[®] and iHeartRadio[®]), thanks to standard SYNC AppLink.⁶

Siri Seamless Integration

Bring the power of Siri[®] into C-MAX with Siri Eyes Free,⁷ your paired iPhone[®] and a long press of the voice-recognition button on the steering wheel.

Automatic Updates Over Wi-Fi

Keep SYNC 3 current with the latest software as new updates become available.⁸ All you need is a Wi-Fi[®] connection.

2017 Ford C-MAX | ford.com

¹Don't drive while distracted. Use voice-operated systems when possible; don't use handheld devices while driving. Some features may be locked out while the vehicle is in gear. Not all features are compatible with all phones. Message and data rates may apply. ²Available feature. ³Requires phone with compatible version of Apple iOS and active data service. SYNC does not control Apple CarPlay while in use. Apple is solely responsible for their functionality. Message and data rates may apply. ⁴Requires phone with compatible version of Android Auto and active data service. SYNC does not control Android Auto while in use. Google and other third parties are responsible for their respective functionality. Message and data rates may apply. ⁵SiriusXM audio and data services each require a subscription sold separately, or as a package, by SiriusXM Radio Inc. If you decide to continue service after your trial, the subscription plan you choose will automatically renew thereafter and you will be charged according to your chosen payment method at then-current rates. Fees and taxes apply. To cancel you must call SiriusXM at 1-866-635-2349. See SiriusXM Customer Agreement for complete terms at www.siriusxm.com. All fees and programming subject to change. Trial subscriptions not available in AK and HI. ⁶SYNC AppLink is available on select models and compatible with select smartphone platforms and requires any compatible apps to be installed and running on a capable smartphone while connected to SYNC. Commands may vary by phone and AppLink software. Message and data rates may apply. ⁷Requires SYNC 3. ⁸Optional Navigation System map updates cannot be received via Wi-Fi and require a separate update.





A REWARDING DRIVING ENVIRONMENT. C-MAX accentuates its comfortable seating for 5 and impressive 99.7 cu. ft. of passenger volume with appealing amenities like leather-trimmed seating,¹ a 10-way power-adjustable driver's seat (class-exclusive² on C-MAX Energi) and smart standards like a driver's knee airbag. So you can breathe easy, a cabin air filter helps prevent pollen from entering the vehicle through the class-exclusive dual-zone electronic automatic temperature control.

SiriusXM Radio

Listen to everything you love with SiriusXM.^{®3} Get over 150 channels including all genres of commercial-free music, plus every major sport and the best talk, news, comedy and entertainment. And you'll hear it all with a 6-month trial subscription to the All Access package, included with your new C-MAX. So you can rock your ride, plus listen anywhere online and on the SiriusXM app.

2017 Ford C-MAX | ford.com

C-MAX Hybrid Titanium in Charcoal Black leather trim with available equipment. ¹Available feature. ²C-MAX Energi class is Small Plug-In Hybrid Vehicles based on Ford segmentation. C-MAX Hybrid class is Small Hybrid Vehicles based on Ford segmentation. ³SiriusXM audio and data services each require a subscription sold separately, or as a package, by SiriusXM Radio Inc. If you decide to continue service after your trial, the subscription plan you choose will automatically renew thereafter and you will be charged according to your chosen payment method at then-current rates. Fees and taxes apply. To cancel you must call SiriusXM at 1-866-635-2349. See SiriusXM Customer Agreement for complete terms at www.siriusxm.com. All fees and programming subject to change. Trial subscriptions not available in AK and HI.





MAXIMIZE THE POSSIBILITIES.

It's easy with the best-in-class versatility of the C-MAX family. Loading cargo is convenient with the class-exclusive, hands-free foot-activated liftgate! You can even program its fully opened height to the position that works best for you. Just kick your foot under the rear bumper with your Intelligent Access¹ key fob tucked in a pocket or purse. Sensors detect the motion of your leg and the proximity of the fob, triggering the liftgate to open or close.

The standard 60/40 split rear seat folds down, providing a flat load floor on C-MAX Hybrid. And cargo space is abundant – up to 52.6 cu. ft. inside C-MAX Hybrid and 42.8 cu. ft. inside C-MAX Energi. In-floor compartments behind the front seats discreetly hold small items like your tablet, computer or the standard 120V convenience charge cord.² C-MAX is thoughtfully designed for your on-the-go lifestyle.

Plenty of storage for items both large and small.









Battery charge status is displayed in the instrument cluster.

Dramatization. Actual mileage will vary.

EMPOWER EACH DRIVE.

Smart technology on C-MAX can help with curbside parking, backing up, detecting vehicles in your blind spots, maximizing your efficiency and more. Make parallel parking easier with active park assist.^{1,2} This system not only helps you find a spot, it actually steers the vehicle into place while you control the gear shifter, and brake and accelerator pedals. Help gauge how close something is to the back of your vehicle using the rear view camera,² which can display a full-color image on the SYNC³ 3 screen! BLIS[®] (Blind Spot Information System) with cross-traffic alert^{1,2,3} helps alert you to traffic detected in your blind spots, or when traffic nears either side of the vehicle as you slowly back up.

Inside, empower yourself with real-time feedback from the vibrant green leaves on the standard SmartGauge[®] with EcoGuide instrument cluster. The more efficiently you drive, the more lush your vine will be – giving you coaching, guidance and confirmation with each drive. The system also includes a Brake Coach to help you optimize your driving range (and grow more leaves) with regenerative braking. Together with EcoSelect,⁴ which allows C-MAX Hybrid to operate more efficiently by reducing the amount of power drawn from the vehicle, you can help maximize fuel efficiency. EcoCruise is also included. Steering wheel-mounted controls and a built-in tutorial make it easy to use.

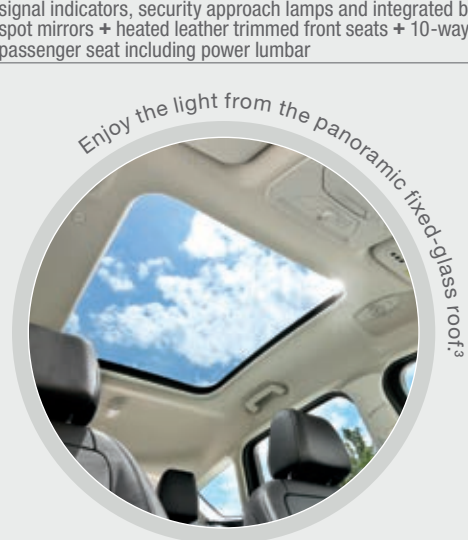
MODELS	ENGINES/EPA-ESTIMATED RATINGS ¹	STANDARD FEATURES																																																				
<p>SE</p>  <p>C-MAX Hybrid and C-MAX Energi</p>	<p>2.0L iVCT Atkinson-Cycle I-4 Hybrid Electric Vehicle (HEV) Combined horsepower: 188 Gas engine torque: 129 lb.-ft. Electronically controlled continuously variable transmission (eCVT) 42 city/38 hwy/40 combined mpg</p> <p>I-4 Plug-In Hybrid Electric Vehicle (PHEV) Combined horsepower: 195 charge depletion mode; 188 charge sustained mode Gas engine torque: 129 lb.-ft. Electronically controlled continuously variable transmission (eCVT) 41 city/38 hwy/39 combined mpg (gasoline only) 104 city/87 hwy/95 combined MPGe</p>	<p>Mechanical Active Grille Shutters Brakes – Regenerative Braking System with 4-wheel disc Anti-Lock Brake System (ABS) Engine – 2.0L iVCT Atkinson-cycle I-4 Front-wheel drive (FWD) Motor – Permanent-magnet AC-synchronous electric (88-kW) Parking brake – Electric-assist Steering – Electric power-assisted (EPAS) Suspension – Gas-pressurized shock absorbers Suspension – Independent front and rear with stabilizer bars Tire inflator and sealant kit Transmission – Electronically controlled continuously variable (eCVT)</p> <p>Driver-Assist Technology Headlamps – Automatic with courtesy delay Rear view camera</p> <p>Seating 5-passenger seating Front – 4-way adjustable head restraints Front – 10-way power driver's seat including power lumbar Front – Bucket seats Rear – 60/40 split forward-folding bench seat with 2-way adjustable head restraints for all 3 seating positions</p> <p>Interior Active noise cancellation Cabin air filter Cargo area – Cover Cargo area – Tie-down hooks (4) Center console – 1st-row full center with armrest and storage Climate controls – Dual-zone electronic automatic temperature control Cruise control Cupholders – 2 front, 2 rear Display – Outside temperature and compass Flooring – Front and rear mats Grab handles – Rear with integrated coat hooks Illuminated glove compartment Lighting – Fade-to-off Lighting – Front, rear and cargo dome lights Lighting – Illuminated entry</p> <p>Locks – Power with autolock Power outlets – 12-volt powerpoints (2) Power outlets – 110-volt (1) Rear-seat heat ducts Remote liftgate release SiriusXM® Radio with 6-month trial subscription SmartGauge® with EcoGuide Steering column – Manual tilt/telescoping Steering wheel – Leather-wrapped with cruise, audio and 5-way controls Storage – Front seat back map pockets Storage – Front-door storage bins Storage – Overhead console Storage – Rear in-floor storage compartments Trip computer Viors – Adjustable driver and front-passenger with illuminated vanity mirrors Windows – Power with one-touch-up/-down and global open features</p> <p>Rear-window defroster Remote Keyless Entry System with 2 integrated keypad remotes Rocker panel moldings – Black Tires – P225/50R17 Windshield wipers – Front: speed-sensitive, variable-intermittent with washer; rear: 2-speed with washer</p> <p>Safety & Security Airbags – Personal Safety System™ for driver and front passenger includes dual-stage front airbags²; safety belt pretensioners, safety belt energy-management retractors, safety belt usage sensors, driver's seat position sensor, crash severity sensor, restraint control module and Front-Passenger Sensing System Airbags – Driver's knee airbag² Airbags – Front-seat side airbags² Safety Canopy® System with side-curtain airbags² and rollover sensor 3-point safety belts for all seating positions AdvanceTrac® with RSC® (Roll Stability Control™) Battery saver with headlamps-off delay Child-safety rear door locks LATCH – Lower Anchors and Tether Anchors for Children MyKey® Perimeter alarm SecuriLock® Passive Anti-Theft System SOS Post-Crash Alert System™ Tire Pressure Monitoring System</p>																																																				
<p>TITANIUM</p>  <p>C-MAX Hybrid and C-MAX Energi</p>	<p>WHEELS</p>  <p>17" Bright Silver-Painted Aluminum Standard: SE</p>  <p>17" Machined Aluminum with Magnetic-Painted Pockets Standard: Titanium</p>	<p>DIMENSIONS</p> <p>Exterior</p> <table border="1"> <tr><td>Wheelbase</td><td>104.3"</td></tr> <tr><td>Length</td><td>173.6"</td></tr> <tr><td>Height</td><td></td></tr> <tr><td> C-MAX Hybrid</td><td>63.9"</td></tr> <tr><td> C-MAX Energi</td><td>63.8"</td></tr> <tr><td>Width – Mirrors folded</td><td>75.6"</td></tr> <tr><td>Width – Including mirrors</td><td>82.1"</td></tr> </table> <p>Interior</p> <table border="1"> <tr><td>Head room (front/rear)</td><td>41.0"/39.4"</td></tr> <tr><td>Leg room (max. front/rear)</td><td>43.1"/36.5"</td></tr> <tr><td>Hip room (front/rear)</td><td>54.3"/51.9"</td></tr> <tr><td>Shoulder room (front/rear)</td><td>55.9"/55.2"</td></tr> <tr><td>Cargo length with rear seats folded</td><td></td></tr> <tr><td> C-MAX Hybrid</td><td>66.0"</td></tr> <tr><td> C-MAX Energi</td><td>64.7"</td></tr> <tr><td>Cargo length with rear seats up</td><td></td></tr> <tr><td> C-MAX Hybrid</td><td>32.4"</td></tr> <tr><td> C-MAX Energi</td><td>32.0"</td></tr> </table> <p>Capacities (cu. ft.)</p> <table border="1"> <tr><td>Passenger volume</td><td>99.7</td></tr> <tr><td>Cargo volume behind front seats</td><td></td></tr> <tr><td> C-MAX Hybrid</td><td>52.6</td></tr> <tr><td> C-MAX Energi</td><td>42.8</td></tr> <tr><td>Cargo volume behind rear seats</td><td></td></tr> <tr><td> C-MAX Hybrid</td><td>24.5</td></tr> <tr><td> C-MAX Energi</td><td>19.2</td></tr> </table> <p>Fuel tank (gal.)</p> <table border="1"> <tr><td> C-MAX Hybrid</td><td>13.5</td></tr> <tr><td> C-MAX Energi</td><td>14.0</td></tr> </table> <p>Exterior Bumpers – Body-color upper fascias Daytime running lamps Door handles – Body-color Easy Fuel® capless fuel filler Headlamps – Halogen Headlamps – LED signature lighting Rear spoiler – Body-color</p> <p>Exterior Bumpers – Body-color upper fascias Daytime running lamps Door handles – Body-color Easy Fuel® capless fuel filler Headlamps – Halogen Headlamps – LED signature lighting Rear spoiler – Body-color</p> <p><i>See a light here³. Stay in your lane.</i></p> <p><i>Be ready for a quick charge with the 240V TLBCORD™⁴</i></p> <p>Comparisons based on competitive models (C-MAX Hybrid class is Small Hybrid Vehicles based on Ford segmentation; C-MAX Energi class is Small Plug-In Hybrid Vehicles based on Ford segmentation), publicly available information and Ford certification data at time of release. Vehicles may be shown with optional equipment. Features may be offered only in combination with other options or subject to additional ordering requirements/limitations. Dimensions shown may vary due to optional features and/or production variability. Information is provided on an "as is" basis and could include technical, typographical or other errors. Ford makes no warranties, representations, or guarantees of any kind, express or implied, including but not limited to, accuracy, currency, or completeness, the operation of the information, materials, content, availability, and products. Ford reserves the right to change product specifications, pricing and equipment at any time without incurring obligations. Your Ford Dealer is the best source of the most up-to-date information on Ford vehicles.</p>	Wheelbase	104.3"	Length	173.6"	Height		C-MAX Hybrid	63.9"	C-MAX Energi	63.8"	Width – Mirrors folded	75.6"	Width – Including mirrors	82.1"	Head room (front/rear)	41.0"/39.4"	Leg room (max. front/rear)	43.1"/36.5"	Hip room (front/rear)	54.3"/51.9"	Shoulder room (front/rear)	55.9"/55.2"	Cargo length with rear seats folded		C-MAX Hybrid	66.0"	C-MAX Energi	64.7"	Cargo length with rear seats up		C-MAX Hybrid	32.4"	C-MAX Energi	32.0"	Passenger volume	99.7	Cargo volume behind front seats		C-MAX Hybrid	52.6	C-MAX Energi	42.8	Cargo volume behind rear seats		C-MAX Hybrid	24.5	C-MAX Energi	19.2	C-MAX Hybrid	13.5	C-MAX Energi	14.0
Wheelbase	104.3"																																																					
Length	173.6"																																																					
Height																																																						
C-MAX Hybrid	63.9"																																																					
C-MAX Energi	63.8"																																																					
Width – Mirrors folded	75.6"																																																					
Width – Including mirrors	82.1"																																																					
Head room (front/rear)	41.0"/39.4"																																																					
Leg room (max. front/rear)	43.1"/36.5"																																																					
Hip room (front/rear)	54.3"/51.9"																																																					
Shoulder room (front/rear)	55.9"/55.2"																																																					
Cargo length with rear seats folded																																																						
C-MAX Hybrid	66.0"																																																					
C-MAX Energi	64.7"																																																					
Cargo length with rear seats up																																																						
C-MAX Hybrid	32.4"																																																					
C-MAX Energi	32.0"																																																					
Passenger volume	99.7																																																					
Cargo volume behind front seats																																																						
C-MAX Hybrid	52.6																																																					
C-MAX Energi	42.8																																																					
Cargo volume behind rear seats																																																						
C-MAX Hybrid	24.5																																																					
C-MAX Energi	19.2																																																					
C-MAX Hybrid	13.5																																																					
C-MAX Energi	14.0																																																					

¹Actual mileage will vary. ²Always wear your safety belt and secure children in the rear seat. ³Available feature. ⁴C-MAX Energi only.

C-MAX HYBRID SE	C-MAX HYBRID TITANIUM	C-MAX ENERGI SE	C-MAX ENERGI TITANIUM	
				Mechanical
S	S			120V convenience charging cable
		S	S	Battery system – Lithium ion, 1.4-kW capacity
		S	S	Battery system – Lithium ion, 7.6-kW capacity
		S	S	EcoCruise
S	S			EcoSelect button (includes EcoCruise and EV+ mode)
		S	S	EV Mode button with EV Now, EV Later and EV Auto
				Driver-Assist Technology
P	S	P	S	Reverse Sensing System
S		S		SYNC® Voice Recognition Communications and Entertainment System with 4.2" color LCD screen in center stack, 911 Assist, AppLink®, and 1 smart-charging USB port
P	S	P	S	SYNC 3 with 8" color LCD touchscreen in center stack with swiping capability and unique Hybrid Powerflow screen, 911 Assist, AppLink and 2 smart-charging USB ports
		S	S	Windshield wipers – Rain-sensing
				Seating
S		S		Front – 4-way manual passenger seat
P	S	P	S	Front – 10-way power passenger seat including power lumbar
P	S	P	S	Front – Heated
		S	S	Rear – Center seat fold-down armrest with storage
S		S		Trim – Cloth
P	S	P	S	Trim – Leather-trimmed seats
				Interior
S		S		AM/FM stereo/single-CD player with MP3 capability and 6 speakers with speed-compensated volume
S		S		Audio System from Sony® with AM/FM stereo/single-CD player with MP3 capability, 9 speakers and HD Radio™ Technology
O	O	O	O	Voice-activated Navigation System ¹ with integrated SiriusXM Traffic and Travel Link® with 5-year subscription
		S	S	Ambient lighting
		O	O	Charge cord bag by THULE® ²
		S	S	Climate control – Supplemental PTC heater
O	O	O	O	Door-sill plates – Stainless steel
		S	S	Ignition – Remote Start System
		S	S	Ignition – Intelligent Access with push-button start
		S	S	Mirror – Auto-dimming rearview mirror
S		S		Mirror – Day/night rearview mirror
		S	S	MyFord® Mobile app with 5-year service agreement
		S	S	Shifter knob – Leather-wrapped
S		S		Universal garage door opener

C-MAX HYBRID SE	C-MAX HYBRID TITANIUM	C-MAX ENERGI SE	C-MAX ENERGI TITANIUM	
				Exterior
		S	S	Beltline molding – Chrome
		O		Charge door decal
		S	S	External charge port door with LED-illuminated state-of-charge indicator
		S	S	Fog lamps
S		S		Grille – Ebony with chrome surround
		S	S	Grille – Chrome
S		S		Mirrors – Body-color, power, manually folding sideview with turn signal indicators and integrated blind spot mirrors
P	S	P	S	Mirrors – Body-color, power, heated, manually folding sideview with turn signal indicators, security approach lamps and integrated blind spot mirrors
O	O	O	O	Moonroof – Panoramic fixed-glass
O		O		SecuriCode™ keyless entry keypad
S		S		Wheels – 17" Bright Silver-painted aluminum
		S	S	Wheels – 17" machined aluminum with Magnetic-painted pockets
				Equipment Groups & Packages
O				Equipment Group 201A – SE Driver Assist Package includes power liftgate + Reverse Sensing System + SYNC 3 with 8" color LCD touchscreen in center stack with swiping capability and unique Hybrid Powerflow screen, 911 Assist, AppLink and 2 smart-charging USB ports
				Equipment Group 202A – SE Comfort Package includes body-color, power, heated, manually folding sideview mirrors with turn signal indicators, security approach lamps and integrated blind spot mirrors + heated leather trimmed front seats + 10-way power passenger seat including power lumbar

C-MAX HYBRID SE	C-MAX HYBRID TITANIUM	C-MAX ENERGI SE	C-MAX ENERGI TITANIUM	
		O		Equipment Group 301A – Titanium Driver Assist Package includes active park assist + BLIS® (Blind Spot Information System) with cross-traffic alert + Forward Sensing System + hands-free foot-activated liftgate
		O		Equipment Group 401A – SE Driver Assist Package includes power liftgate + Reverse Sensing System + SYNC 3 with 8" color LCD touchscreen in center stack with swiping capability and unique Hybrid Powerflow screen, 911 Assist, AppLink and 2 smart-charging USB ports
		O		Equipment Group 402A – SE Comfort Package includes body-color, power, heated, manually folding sideview mirrors with turn signal indicators, security approach lamps and integrated blind spot mirrors + heated leather trimmed front seats + 10-way power passenger seat including power lumbar
		O		Equipment Group 501A – Titanium Driver Assist Package includes active park assist + BLIS (Blind Spot Information System) with cross-traffic alert + Forward Sensing System + hands-free foot-activated liftgate
O	O			Cargo Management Package includes foldable, soft cargo organizer, and cargo net
O	O			Cold Weather Package¹ includes heated front cloth seats and heated sideview mirrors with security approach lamps
O	O	O	O	Exterior Protection Package¹ includes rear bumper protector and front and rear molded splash guards
O	O	O	O	Interior Protection Package includes front and rear all-weather floor mats and cargo area protector



¹Restrictions may apply. See your dealer for details. ²Ford Licensed Accessory. ³Available feature. ⁴C-MAX Energi only.

EXTERIOR & INTERIOR CHOICES

Exterior	SE		SE COMFORT PACKAGE/ TITANIUM	
	White Platinum Metallic Tri-coat ¹	1	2	3
Oxford White	1	2	3	4
Ingot Silver ²	1	2	3	4
White Gold ²	1	2	3	4
Ruby Red Metallic Tinted Clearcoat ¹	1	2	3	4
Kona Blue ²	1	2	3	4
Magnetic ²	1	2	3	4
Shadow Black	1	2	3	4



White Platinum Metallic Tri-coat



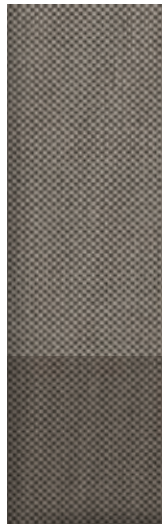
Oxford White



Ingot Silver

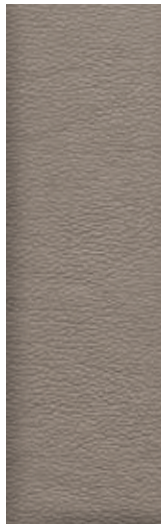


White Gold



Medium Light Stone Cloth

2



Medium Light Stone Leather

4



Ruby Red Metallic Tinted Clearcoat



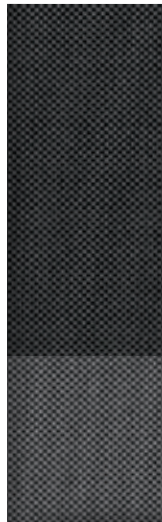
Kona Blue



Magnetic

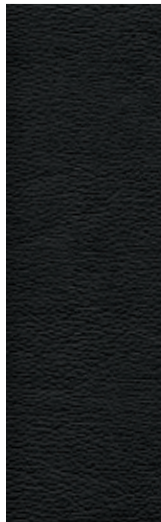


Shadow Black



Charcoal Black Cloth with Gray Inserts

1



Charcoal Black Leather

3



Colors are representative only. See your dealer for actual paint/trim options. ¹Additional charge. ²Metallic.



FORD ACCESSORIES

C-MAX Hybrid SE in White Platinum Metallic Tri-coat accessorized with roof-mounted crossbars and roof-mounted cargo box by THULE,^{®1} side window deflectors by EGR,¹ hood protector by Lund,^{®1} and molded splash guards

Exterior

- Charge door decal²
- Full vehicle covers
- Hood protector¹
- Racks and carriers¹
- Rear bumper protector (A)
- Roof-mounted bike carrier by THULE^{®1} (B)
- Side window deflectors¹
- Splash guards
- Wheel lock kits

Interior

- All-weather floor mats (C)
- Ash cup/coin holders
- Cargo area protector (A)
- Cargo organizers and protectors
- Carpeted floor mats
- Charge cord bag^{1,2}
- Door sill plates
- First aid and roadside assistance kits¹
- Interior light kit³
- Tablet cradle¹

Electronics

- Keyless entry keypad^{3,4}
- Remote Access (D)
- Remote start systems
- Reverse Bumper-Mounted Warning Sensor System¹
- Vehicle Security System



accessories.ford.com



New Vehicle Limited Warranty. We want your Ford C-MAX ownership experience to be the best it can be. Under this warranty, your new vehicle comes with 3-year/36,000-mile bumper-to-bumper coverage, 5-year/60,000-mile Powertrain Warranty coverage, 5-year/60,000-mile safety restraint coverage, and 5-year/unlimited-mile corrosion (perforation) coverage – all with no deductible. C-MAX unique electric components are covered during the Hybrid/Electric Unique Component Coverage, which lasts for 8 years or 100,000 miles, whichever occurs first. Please ask your Ford Dealer for a copy of this limited warranty.

Roadside Assistance. Covers your vehicle for 5 years or 60,000 miles, so you have the security of knowing that help may be only a phone call away should you run out of fuel, lock yourself out of the vehicle or need towing. Your Ford Dealer can provide complete details on all of these advantages.

Ford Credit. Get the ride you want. Whether you plan to lease or finance, you'll find the choices that are right for you at Ford Credit. Ask your Ford Dealer for details or check us out at fordcredit.com.

Ford Protect Extended Service Plans. Whether you purchase or lease your Ford vehicle, insist on genuine Ford Protect extended service plans. Ford Protect has a variety of plans to give you peace-of-mind protection whether you want vehicle component or maintenance coverage. Plus, they are fully backed by Ford and honored at all Ford dealerships in the U.S., Canada and Mexico. When you visit your dealer, insist on genuine Ford Protect extended service plans.

Insurance Services. Get Ford Motor Company quality in your auto insurance. Our program offers industry-leading benefits and competitive rates. Call 1-877-367-3847, or visit us at fordvip.com for a no-obligation quote. Insurance offered by American Road Services Company (in CA, American Road Insurance Agency), a licensed agency and subsidiary of Ford Motor Company.

Ford Original Accessories. They're warranted for whichever provides you the greatest benefit: 24 months/unlimited mileage, or the remainder of your Bumper-to-Bumper 3-year/36,000-mile New Vehicle Limited Warranty. Ford Licensed Accessories (FLA) are warranted by the accessory manufacturer's warranty. FLA are designed and developed by the accessory manufacturer and have not been designed or tested to Ford Motor Company engineering requirements. Contact your Ford Dealer for details and/or a copy of all limited warranties.

AeroVironment and TurboCord are trademarks of AeroVironment, Inc. Android Auto, Google, Google Play and other marks are trademarks of Google Inc. Apple, Apple CarPlay, iPhone and Siri are trademarks of Apple Inc., registered in the U.S. and other countries. App Store is a service mark of Apple Inc., registered in the U.S. and other countries. "HD Radio" is a proprietary trademark of iBiquity Digital Corporation. PANDORA, the PANDORA logo, and the Pandora trade dress are trademarks or registered trademarks of Pandora Media, Inc. Used with permission. SiriusXM audio and data services each require a subscription sold separately, or as a package, by SiriusXM Radio Inc. If you decide to continue service after your trial, the subscription plan you choose will automatically renew thereafter and you will be charged according to your chosen payment method at then-current rates. Fees and taxes apply. To cancel you must call SiriusXM at 1-866-635-2349. See SiriusXM Customer Agreement for complete terms at www.siriusxm.com. All fees and programming subject to change. Trial subscriptions not available in AK and HI. Sirius, XM and all related marks and logos are trademarks of Sirius XM Radio Inc. Sony is a registered trademark of the Sony Corporation. THULE is a registered trademark of Thule Sweden AB. Wi-Fi[®] is a registered trademark of the Wi-Fi Alliance.[®]

¹Ford Licensed Accessory. ²Available on C-MAX Energi only. ³Available on C-MAX Hybrid only. ⁴Not available with Intelligent Access with push-button start.