

You lie awake.
You think of nothing else.
Our engineers know
just how you feel.



Every once in a while, a relationship comes along that was simply meant to be. A connection like this doesn't happen by chance. It's the result of over a century of hard work, by some of the world's most talented, and most dedicated, designers and engineers. People who live and breathe automobiles. Who have spent lifetimes researching the exhilaration of performance. The nature of comfort. The artistry of style. The physics of safety. The discipline of quality. The miracles of technology. And the gracious subtleties of luxury. Because no two people are alike, they have created not just one E-Class, but a whole family of them. Automobiles that do their part to help minimize their environmental impact, with their advanced low-emission technology. There's the innovative E320 Sedan, the all-wheel-drive E320 4MATIC™ Sedan, the versatile E320 Wagon or our all-wheel-drive E320 4MATIC Wagon. If you like more muscle, you can select the V-8 powered E430 Sedan or the surefooted E430 4MATIC Sedan. And if you think there's no such thing as too much power, we offer the outrageous performance of the limited production E55 AMG Sport Sedan. Whichever E-Class model you opt for, you'll be pleased to discover each one has been designed to be absolutely, precisely right—for exactly the right somebody.



E 320 E 320 4MATIC



E 320 SEDAN FEATURES: The benchmark for value, luxury, safety and performance—and the best-selling import luxury car for six years in a row.¹ **Performance:** Ultra Low Emission 3,199-cc V-6 engine developing 221 hp and 232 lb-ft of torque • Driver-adaptive 5-speed automatic transmission with Touch Shift • Electronic Stability Program (ESP) • Emergency-sensing Brake Assist. **Styling:** 6-spoke 16" alloy wheels • Burl walnut wood trim • Leather-trimmed steering wheel and shift knob. **Comfort:** Premium leather upholstery • 10-way power front seats, each with 3-position memory • 4-way tilt/telescoping power steering column • Front center armrest with upper and climate-controlled lower enclosed storage compartments • CFC-free dual-zone climate control with charcoal filter, dust filter, sun sensor and smog sensor • Low-intensity lighting of center console, door handles and footwells • 8-speaker audio system. **Convenience:** Multifunction steering wheel • Multifunction display • Eccentric-sweep windshield wiper with heated washers • Heated power outside mirrors • Auto-dimming left-side and inside rearview mirrors • Right-side mirror with parking assist • One-touch express-up/down for all four windows • Entrance lamps in all four doors • Four cupholders • HomeLink[®] compatible 3-button garage door control • Flexible Service System. **Security and Safety:** Eight air bags offering 10-way protection • BabySmart™ system • Tele Aid² • SmartKey with remote locking and panic feature • Night security illumination • Automatic antitheft alarm system.

E 320 4MATIC™ SEDAN FEATURES: All the value of the E320 Sedan plus the surefootedness of all-wheel drive: 4MATIC all-wheel drive with permanent 35/65 front/rear torque split • 4-wheel Electronic Traction System (4-ETS) • ESP, incorporated in 4MATIC system • 10-spoke 16" alloy wheels.

¹ Calendar-year 1995 through 2000 sales. Source: *Automotive News*. ² Where cellular and Global Positioning System coverage are available. Subscription required for service, airtime and connection charges. First year's monitoring and connection charges plus 30 minutes airtime included at no cost with subscription.

ENGINE AND DRIVETRAIN

	E 320 SEDAN	E 320 4MATIC SEDAN
Engine	3,199-cc SOHC 18-valve 90° V-6. High-pressure die-cast alloy cylinder block, alloy heads.	
Net power	221 hp @ 5,600 rpm	221 hp @ 5,600 rpm
Net torque	232 lb-ft @ 3,000-4,800 rpm	232 lb-ft @ 3,000-4,800 rpm
Compression ratio	10.0:1	10.0:1
Fuel requirement	Premium unleaded, 91 pump octane.	Premium unleaded, 91 pump octane.
Fuel and ignition system	ME 2.8 engine management. Integrated sequential multipoint fuel injection and phased twin-spark ignition includes individual cylinder control of fuel spray, spark timing and phase, and antiknock. Two high-energy ignition coils and two spark plugs per cylinder, with 100,000-mile spark plug intervals. Electronically controlled throttle.	
Intake system	Magnesium 2-stage resonance intake manifold increases the intake runner length at lower rpm for improved response.	
Transmission	Electronic 5-speed automatic with driver-adaptive control. Touch Shift allows driver to manually downshift and allow upshifts by nudging the shift lever to the left or right from the Drive position. Driver-selectable winter mode starts vehicle moving in 2nd gear or a special second Reverse gear to help improve takeoff on slippery surfaces. Display in instrument cluster indicates selected gear range.	
Rear axle ratio	3.07:1	3.07:1

TRACTION AND STABILITY

Electronic Stability Program (ESP) and Automatic Slip Control (ASR)

ESP compares the driver's intended course, via steering and braking inputs, to the vehicle's response, via lateral acceleration, rotation (yaw) and individual wheel speeds. ESP then brakes individual front or rear wheels and/or reduces excess engine power as needed to help correct understeer (plowing) or oversteer (fishtailing). ESP incorporates the functions of ASR traction control, which senses drive-wheel slip and individually brakes the slipping wheel or wheels, and/or reduces excess engine power, until control is regained.¹

4MATIC™ all-wheel drive with 4-wheel Electronic Traction System (4-ETS)

Not available. Standard. 4MATIC features a permanent 35/65 front/rear torque split via a planetary center differential. 4-ETS monitors speed of all four wheels to detect wheel slip, then applies individual brakes as needed to provide the effect of locking the front, rear and/or center differentials, and/or reduces excess engine power. 4-ETS continually balances the torque split to ensure that power is sent to the wheel(s) with traction. 4MATIC also incorporates the functions of ESP and ASR.

CHASSIS

	E 320 SEDAN	E 320 4MATIC SEDAN
Suspension	Front: Independent double wishbone with triangular lower control arms, antidive geometry and stabilizer bar. Separate gas-pressurized shock absorbers and coil springs. Rear: Independent 5-arm multilink with geometry for antilift, antisquat and alignment control and stabilizer bar. Separate gas-pressurized shock absorbers and coil springs.	
Steering	Rack-and-pinion with speed-sensitive power assist and integral hydraulic damper. 3.3 steering-wheel turns, lock-to-lock. Turning circle: 37.2 ft/11.34 m, curb-to-curb.	
Wheels , aluminum-alloy, standard with optional Sport Package	6-spoke design. 7.5Jx16 front and rear.	10-spoke design. 7.5Jx16 front and rear.
Tires , steel-belted radial, standard with optional Sport Package	215/55 R16 93H all-season performance. 235/45 R17 94W, high-performance. ²	215/55 R16 93H all-season performance. Not available.
Brakes , dual-circuit power-assisted	4-wheel disc, front discs ventilated.	4-wheel disc, front discs ventilated.
Antilock Braking System (ABS)	ABS senses impending wheel lockup under heavy braking and pumps the front brakes individually or the rear brakes together (to help maintain stability) as needed up to 30 times per second, to prevent lockup and maintain steering ability.	
Brake Assist	Upon sensing emergency braking via the speed at which the driver presses the brake pedal, Brake Assist immediately applies maximum available power boost, potentially reducing overall stopping distance by eliminating the delay caused by a common human tendency not to brake hard enough, soon enough. Letting up on brake pedal releases Brake Assist. Braking effectiveness also depends on proper brake system maintenance, and tire and road conditions.	

PERFORMANCE

Acceleration , 0-60 mph ³	7.1 seconds	7.5 seconds
Fuel economy , EPA ⁴ /highway ⁵ estimate	20 mpg/28 mpg	20 mpg/27 mpg
Emission certification	Ultra Low Emission Vehicle (ULEV).	Ultra Low Emission Vehicle (ULEV).

DIMENSIONS

Wheelbase	111.5 in/2,833 mm	111.5 in/2,833 mm
Overall length	189.4 in/4,810 mm	189.4 in/4,810 mm
Overall height	56.7 in/1,439 mm	56.7 in/1,439 mm
Overall width	70.8 in/1,799 mm	70.8 in/1,799 mm
Track (front, rear)	60.2 in/1,529 mm, 59.9 in/1,521 mm	60.2 in/1,529 mm, 59.9 in/1,521 mm
Coefficient of drag	0.29	0.29
Curb weight	3,624 lb/1,650 kg	3,823 lb/1,740 kg
Headroom (front, rear)	37.6 in/954 mm, 37.2 in/944 mm	37.6 in/954 mm, 37.2 in/944 mm
Legroom (front, rear)	41.3 in/1,050 mm, 36.1 in/918 mm	41.3 in/1,050 mm, 36.1 in/918 mm
Shoulder room (front, rear)	56.3 in/1,431 mm, 57.1 in/1,450 mm	56.3 in/1,431 mm, 57.1 in/1,450 mm
Cabin capacity	95.0 cu ft/2,690 liters	95.0 cu ft/2,690 liters
Cargo capacity	15.3 cu ft/434 liters	15.3 cu ft/434 liters

¹ No system, regardless of how sophisticated, can repeal the laws of physics or overcome careless driving actions. Please always wear your seat belt. ² W-rated tires are optimized for performance driving and may provide reduced ride comfort, increased tire noise, substantially increased treadwear and greater susceptibility to damage compared with H-rated tires. ³ Stated rates of acceleration are based upon manufacturer's track results and may vary depending upon model, environmental and road surface conditions, driving style, elevation and vehicle load. ⁴ 2001 EPA estimated fuel economy. Compare the estimated mpg to the estimated mpg of other vehicles. You may get different mileage depending on how fast you drive, weather conditions and trip length. ⁵ 2002 figures unavailable at time of publication. See your dealer. ⁶ Your actual highway mileage will probably be less than the highway estimate. 2001 figures shown. 2002 figures unavailable at time of publication. See your dealer.



E 430

E 430 4MATIC



E 430 SEDAN FEATURES: An impressive representative of E-Class value and luxury, especially for power and response. **Performance:** Ultra Low Emission 4,266-cc V-8 engine developing 275 hp and 295 lb-ft of torque • Driver-adaptive 5-speed automatic transmission with Touch Shift • Electronic Stability Program (ESP) • Emergency-sensing Brake Assist. **Styling:** 5-hole 17" alloy wheels • Burl walnut wood trim • Leather-trimmed steering wheel and shift knob. **Comfort:** Premium leather upholstery • 10-way power front seats, each with 3-position memory • Front center armrest with upper and climate-controlled lower enclosed storage compartments • CFC-free dual-zone climate control with charcoal filter, dust filter, sun sensor and smog sensor • Low-intensity lighting of center console, door handles and footwells • 8-speaker Bose® sound system. **Convenience:** Multifunction steering wheel • Multifunction display • 4-way tilt/telescoping power steering column • Eccentric-sweep windshield wiper with heated washers • Heated power outside mirrors • Auto-dimming left-side and inside rearview mirrors • Right-side mirror with parking assist • One-touch express-up/down for all four windows • Entrance lamps in all four doors • Four cupholders • HomeLink® compatible 3-button garage door control • Flexible Service System. **Security and Safety:** Eight air bags offering 10-way protection • BabySmart™ system • Tele Aid¹ • SmartKey with remote locking and panic feature • Night security illumination • Automatic antitheft alarm system.

E 430 4MATIC™ SEDAN FEATURES: The luxury and performance of the E 430 Sedan plus the surefootedness of 4MATIC all-wheel drive with permanent 35/65 front/rear torque split • 4-Wheel Electronic Traction System (4-ETS) • ESP, incorporated in 4MATIC system.

¹Where cellular and Global Positioning System coverage are available. Subscription required for service, airtime and connection charges. First year's monitoring and connection charges plus 30 minutes airtime included at no cost with subscription.

ENGINE AND DRIVETRAIN

	E 430 SEDAN	E 430 4MATIC SEDAN
Engine	4,266-cc SOHC 24-valve 90° V-8. High-pressure die-cast alloy cylinder block, alloy heads.	
Net power	275 hp @ 5,750 rpm	275 hp @ 5,750 rpm
Net torque	295 lb-ft @ 3,000-4,000 rpm	295 lb-ft @ 3,000-4,000 rpm
Compression ratio	10.0:1	10.0:1
Fuel requirement	Premium unleaded, 91 pump octane.	Premium unleaded, 91 pump octane.
Fuel and ignition system	ME 2.8 engine management. Integrated sequential multipoint fuel injection and phased twin-spark ignition includes individual cylinder control of fuel spray, spark timing and phase, and antiknock. Two high-energy ignition coils and two spark plugs per cylinder, with 100,000-mile spark plug intervals. Electronically controlled throttle.	
Intake system	Magnesium 2-stage resonance intake manifold increases intake runner length at lower rpm for improved response. (E55 AMG also includes enlarged-diameter intake runners for higher-rpm mode.)	
Transmission	Electronic 5-speed automatic with driver-adaptive control. Touch Shift allows driver to manually downshift and allow upshifts by nudging the shift lever to the left or right from the Drive position. Driver-selectable winter mode starts vehicle moving in 2nd gear or a special second Reverse gear to help improve takeoff on slippery surfaces. Display in instrument cluster indicates selected gear range.	
Rear axle ratio	2.82:1	2.82:1

TRACTION AND STABILITY

Electronic Stability Program (ESP) and Automatic Slip Control (ASR)

ESP compares the driver's intended course, via steering and braking inputs, to the vehicle's response, via lateral acceleration, rotation (yaw) and individual wheel speeds. ESP then brakes individual front or rear wheels and/or reduces excess engine power as needed to help correct understeer (plowing) or oversteer (fishtailing). ESP incorporates the functions of ASR traction control, which senses drive-wheel slip and individually brakes the slipping wheel or wheels, and/or reduces excess engine power, until control is regained.¹

4MATIC all-wheel drive with 4-wheel Electronic Traction System (4-ETS)

Not available. Standard. 4MATIC features a permanent 35/65 front/rear torque split via a planetary center differential. 4-ETS monitors speed of all four wheels to detect wheel slip, then applies individual brakes as needed to provide the effect of locking the front, rear and/or center differentials, and/or reduces excess engine power. 4-ETS continually balances the torque split to ensure that power is sent to the wheel(s) with traction. 4MATIC also incorporates the functions of ESP and ASR.

CHASSIS

	E 430 SEDAN	E 430 4MATIC SEDAN
Suspension	Front: Independent double wishbone with triangular lower control arms, anti-dive geometry and stabilizer bar. Separate gas-pressurized shock absorbers and coil springs. Rear: Independent 5-arm multilink with geometry for antilift, antisquat and alignment control and stabilizer bar. Separate gas-pressurized shock absorbers and coil springs.	
Steering	Rack-and-pinion with speed-sensitive power assist and integral hydraulic damper. 3.3 steering-wheel turns, lock-to-lock. Turning circle: 37.2 ft/11.34 m, curb-to-curb.	
Wheels , aluminum-alloy, standard with optional Sport Package	5-hole design. 7.5Jx17 front and rear. 5-spoke design. 8.0Jx17 front and rear.	5-hole design. 7.5Jx17 front and rear. Not available.
Tires , steel-belted radial, standard with optional Sport Package	235/45R17 94W, high-performance. ² 235/45R17 94W, high-performance. ²	235/45R17 94W, high-performance. ² Not available.
Brakes , dual-circuit power-assisted	4-wheel disc, front discs ventilated.	4-wheel disc, front discs ventilated.
Antilock Braking System (ABS)	ABS senses impending wheel lockup under heavy braking and pumps the front brakes individually or the rear brakes together (to help maintain stability) as needed up to 30 times per second, to prevent lockup and maintain steering ability.	
Brake Assist	Upon sensing emergency braking via the speed at which the driver presses the brake pedal, Brake Assist immediately applies maximum available power boost, potentially reducing overall stopping distance by eliminating the delay caused by a common human tendency not to brake hard enough, soon enough. Letting up on brake pedal releases Brake Assist. Braking effectiveness also depends on proper brake system maintenance, and tire and road conditions.	

PERFORMANCE

Acceleration , 0-60 mph ³	6.2 seconds	6.6 seconds
Fuel economy , EPA ⁴ /highway ⁶ estimate	18 mpg/25 mpg	17 mpg/23 mpg
Emission certification	Ultra Low Emission Vehicle (ULEV).	Ultra Low Emission Vehicle (ULEV).

DIMENSIONS

Wheelbase	111.5 in/2,833 mm	111.5 in/2,833 mm
Overall length	189.4 in/4,810 mm	189.4 in/4,810 mm
Overall height	56.7 in/1,439 mm	56.7 in/1,439 mm
Overall width	70.8 in/1,799 mm	70.8 in/1,799 mm
Track (front, rear)	60.2 in/1,529 mm, 59.9 in/1,521 mm	60.2 in/1,529 mm, 59.9 in/1,521 mm
Coefficient of drag	0.29	0.29
Curb weight	3,757 lb/1,710 kg	3,944 lb/1,790 kg
Headroom (front, rear)	37.6 in/954 mm, 37.2 in/944 mm	37.6 in/954 mm, 37.2 in/944 mm
Legroom (front, rear)	41.3 in/1,050 mm, 36.1 in/918 mm	41.3 in/1,050 mm, 36.1 in/918 mm
Shoulder room (front, rear)	56.3 in/1,431 mm, 57.1 in/1,450 mm	56.3 in/1,431 mm, 57.1 in/1,450 mm
Cabin capacity	95.0 cu ft/2,690 liters	95.0 cu ft/2,690 liters
Cargo capacity	15.3 cu ft/434 liters	15.3 cu ft/434 liters

¹ No system, regardless of how sophisticated, can repeal the laws of physics or overcome careless driving actions. Please always wear your seat belt. ² W-rated tires are optimized for performance driving and may provide reduced ride comfort, increased tire noise, substantially increased treadwear and greater susceptibility to damage compared with H-rated tires. ³ Stated rates of acceleration are based upon manufacturer's track results and may vary depending upon model, environmental and road surface conditions, driving style, elevation and vehicle load. ⁴ 2001 EPA estimated fuel economy. Compare the estimated mpg to the estimated mpg of other vehicles. You may get different mileage depending on how fast you drive, weather conditions and trip length. ⁵ 2002 figures unavailable at time of publication. See your dealer. ⁶ Your actual highway mileage will probably be less than the highway estimate. 2001 figures shown. 2002 figures unavailable at time of publication. See your dealer.



E 320

E 320 4MATIC



E 320 WAGON: The phrase “luxury wagon” may seem like an oxymoron – until you experience the luxury, versatility and value of the E 320 Wagon. **Performance:** Ultra Low Emission 3,199-cc V-6 engine developing 221 hp and 232 lb-ft of torque • Driver-adaptive 5-speed automatic transmission with Touch Shift • Electronic Stability Program (ESP) • Automatic rear-axle level control • Emergency-sensing Brake Assist. **Styling:** 10-spoke 16" alloy wheels • Burl walnut wood trim • Leather-trimmed steering wheel and shift knob. **Comfort:** 10-way power front seats, each with 3-position memory • Leather seating inserts • Front and second row center armrests • CFC-free dual-zone climate control with charcoal filter, dust filter, sun sensor and smog sensor • Low-intensity lighting of center console, door handles and footwells • 8-speaker audio system. **Convenience:** Power tailgate closing assist • Retractable/removable partition net and luggage cover • 60/40-split folding second-row seats • Fold-down rear-facing third-row seats • 82.6 cu ft total cargo volume with all rear seats folded – more than many SUVs • Protective-coated roof rails • 12-volt power outlet in cargo area • Multifunction steering wheel • Multifunction display • 4-way tilt/telescoping power steering column • Eccentric-sweep windshield wiper with heated washers • Auto-on intermittent rear-window wiper • Heated power outside mirrors • Auto-dimming left-side and inside rearview mirrors • Right-side mirror with parking assist • One-touch express-up/down for all four windows • Entrance lamps in all four doors • Six cupholders • HomeLink® compatible 3-button garage door control • Flexible Service System. **Security and Safety:** Eight air bags offering 10-way protection • BabySmart™ system • Tele Aid¹ • SmartKey with remote locking and panic feature • Night security illumination • Automatic antitheft alarm system.

E 320 4MATIC™ WAGON: Add even greater versatility with the surefootedness of 4MATIC™ all-wheel drive with permanent 35/65 front/rear torque split • 4-Wheel Electronic Traction System (4-ETS) • ESP, incorporated in 4MATIC system.

1 Where cellular and Global Positioning System coverage are available. Subscription required for service, airtime and connection charges. First year's monitoring and connection charges plus 30 minutes airtime included at no cost with subscription.

ENGINE AND DRIVETRAIN

	E 320 WAGON	E 320 4MATIC WAGON
Engine	3,199-cc SOHC 18-valve 90° V-6. High-pressure die-cast alloy cylinder block, alloy heads.	
Net power	221 hp @ 5,600 rpm	221 hp @ 5,600 rpm
Net torque	232 lb-ft @ 3,000-4,800 rpm	232 lb-ft @ 3,000-4,800 rpm
Compression ratio	10.0:1	10.0:1
Fuel requirement	Premium unleaded, 91 pump octane.	Premium unleaded, 91 pump octane.
Fuel and ignition system	ME 2.8 engine management. Integrated sequential multipoint fuel injection and phased twin-spark ignition includes individual cylinder control of fuel spray, spark timing and phase, and antiknock. Two high-energy ignition coils and two spark plugs per cylinder, with 100,000-mile spark plug intervals. Electronically controlled throttle.	
Intake system	Magnesium 2-stage resonance intake manifold increases the intake runner length at lower rpm for improved response.	
Transmission	Electronic 5-speed automatic with driver-adaptive control. Touch Shift allows driver to manually downshift and allow upshifts by nudging the shift lever to the left or right from the Drive position. Driver-selectable winter mode starts vehicle moving in 2nd gear or a special second Reverse gear to help improve takeoff on slippery surfaces. Display in instrument cluster indicates selected gear range.	
Rear axle ratio	3.07:1	3.07:1

TRACTION AND STABILITY

Electronic Stability Program (ESP) and Automatic Slip Control (ASR)

ESP compares the driver's intended course, via steering and braking inputs, to the vehicle's response, via lateral acceleration, rotation (yaw) and individual wheel speeds. ESP then brakes individual front or rear wheels and/or reduces excess engine power as needed to help correct understeer (plowing) or oversteer (fishtailing). ESP incorporates the functions of ASR traction control, which senses drive-wheel slip and individually brakes the slipping wheel or wheels, and/or reduces excess engine power, until control is regained.¹

4MATIC™ all-wheel drive with 4-wheel Electronic Traction System (4-ETS)

Not available. Standard. 4MATIC features a permanent 35/65 front/rear torque split via a planetary center differential. 4-ETS monitors speed of all four wheels to detect wheel slip, then applies individual brakes as needed to provide the effect of locking the front, rear and/or center differentials, and/or reduces excess engine power. 4-ETS continually balances the torque split to ensure that power is sent to the wheel(s) with traction. 4MATIC also incorporates the functions of ESP and ASR.

CHASSIS

Suspension	Front: Independent double wishbone with triangular lower control arms, antitive geometry and stabilizer bar. Separate gas-pressurized shock absorbers and coil springs. Rear: Independent 5-arm multilink with geometry for antilift, antisquat and alignment control and stabilizer bar. Hydropneumatic rear shock absorbers with automatic level control.	
Steering	Rack-and-pinion with speed-sensitive power assist and integral hydraulic damper. 3.3 steering-wheel turns, lock-to-lock. Turning circle: 37.2 ft/11.34 m, curb-to-curb.	
Wheels , aluminum-alloy	10-spoke design. 7.5Jx16 front and rear.	
Tires , steel-belted radial	215/55R16 93H all-season performance.	

BRAKES

Brakes, dual-circuit power-assisted
Antilock Braking System (ABS)

Brake Assist

E 320 WAGON

4-wheel disc, front discs ventilated.

ABS senses impending wheel lockup under heavy braking and pumps the front brakes individually or the rear brakes together (to help maintain stability) as needed up to 30 times per second, to prevent lockup and maintain steering ability.

Upon sensing emergency braking via the speed at which the driver presses the brake pedal, Brake Assist immediately applies maximum available power boost, potentially reducing overall stopping distance by eliminating the delay caused by a common human tendency not to brake hard enough, soon enough. Letting up on brake pedal releases Brake Assist. Braking effectiveness also depends on proper brake system maintenance, and tire and road conditions.

E 320 4MATIC WAGON

4-wheel disc, front discs ventilated.

PERFORMANCE

Acceleration, 0-60 mph²
Fuel economy, EPA³/highway⁴ estimate
Emission certification

7.8 seconds
20 mpg/28 mpg
Ultra Low Emission Vehicle (ULEV).

8.2 seconds
20 mpg/27 mpg
Ultra Low Emission Vehicle (ULEV).

DIMENSIONS

Wheelbase
Overall length
Overall height
Overall width
Track (front, rear)
Coefficient of drag
Curb weight
Headroom (front, 2nd row)
Legroom (front, 2nd row)
Shoulder room (front, 2nd row)
Cabin capacity (1st and 2nd rows)
Cargo capacity

111.5 in/2,833 mm
190.0 in/4,825 mm
59.3 in/1,506 mm (including roof rails)
70.8 in/1,799 mm
60.4 in/1,534 mm, 60.6 in/1,538 mm
0.34
3,856 lb/1,750 kg
37.6 in/954 mm, 37.0 in/941 mm
41.3 in/1,050 mm, 36.5 in/928 mm
56.3 in/1,431 mm, 57.1 in/1,450 mm
97.7 cu ft/2,765 liters
43.8 cu ft/1,241 liters
82.6 cu ft/2,340 liters (all rear seats folded)

111.5 in/2,833 mm
190.0 in/4,825 mm
59.3 in/1,506 mm (including roof rails)
70.8 in/1,799 mm
60.4 in/1,534 mm, 60.6 in/1,538 mm
0.34
4,043 lb/1,840 kg
37.6 in/954 mm, 37.0 in/941 mm
41.3 in/1,050 mm, 36.5 in/928 mm
56.3 in/1,431 mm, 57.1 in/1,450 mm
97.7 cu ft/2,765 liters
43.8 cu ft/1,241 liters
82.6 cu ft/2,340 liters (all rear seats folded)

¹ No system, regardless of how sophisticated, can repeal the laws of physics or overcome careless driving actions. Please always wear your seat belt. ² Stated rates of acceleration are based upon manufacturer's track results and may vary depending upon model, environmental and road surface conditions, driving style, elevation and vehicle load. ³ 2001 EPA estimated fuel economy. Compare the estimated mpg to the estimated mpg of other vehicles. You may get different mileage depending on how fast you drive, weather conditions and trip length. 2002 figures unavailable at time of publication. See your dealer. ⁴ Your actual highway mileage will probably be less than the highway estimate. 2001 figures shown. 2002 figures unavailable at time of publication. See your dealer.



Rear-axle level control

E 55 AMG



E 55 AMG SPORT SEDAN: The legendary C 36 AMG was first unleashed in 1993. And in barely eight years, AMG has become synonymous with the design, engineering and manufacture of high-performance street machines admired worldwide. The E 55 AMG is no exception – a fully featured, extensively equipped E-Class sedan super-invigorated with AMG-enhanced performance, styling and excitement. **Performance:** Low Emission AMG-built SOHC 5,439-cc V-8 engine developing 349 hp at 5,500 rpm and 391 lb-ft of torque from 3,150 to 4,500 rpm • 0–60 mph in just 5.4 seconds¹ • AMG-enhanced 5-speed automatic transmission with Touch Shift • AMG sport suspension • AMG-enhanced ventilated disc brakes with 2-piece front rotors • Staggered-width 18" AMG monoblock alloy wheels – 8.0 x 18 front and 9.0 x 18 rear • High-performance tires – 245/40 ZR18 front and 275/35 ZR18 rear.² **Styling:** AMG-designed sculpted front air dam with round projector-beam front foglamps • AMG-designed sculpted side sills and rear apron • Sport B-pillar trim • Smoked taillamp lenses • Exotic black birdseye maple wood trim and AMG-design Charcoal or two-tone Nappa leather upholstery • Light grey AMG instrumentation • AMG-design sport steering wheel • Exclusive AMG floor mats. **Comfort:** Heated 10-way power sport front seats, each with 3-position memory • Multicontour front seats with pneumatically adjustable side, lumbar and thigh supports • Power tilt/sliding tinted glass sunroof with one-touch express-open. • Power rear-window sunshade. **Convenience:** Rain-sensing automatic intermittent windshield wiper with heated washers • Xenon High Intensity Discharge low-beam headlamps with heated washers. **Exhilaration:** Standard on every Mercedes-AMG, right from the beginning.

¹ Stated rates of acceleration are based upon manufacturer's track results and may vary depending upon model, environmental and road surface conditions, driving style, elevation and vehicle load. ² Z-rated tires are optimized for performance driving and may provide reduced ride comfort, increased tire noise, substantially increased treadwear and greater susceptibility to damage compared with H-rated tires.

ENGINE AND DRIVETRAIN

Engine	AMG-built 5,439-cc SOHC 24-valve 90° V-8. High-pressure die-cast alloy cylinder block; alloy heads.
Net power	349 hp @ 5,500 rpm
Net torque	391 lb-ft @ 3,150-4,500 rpm
Compression ratio	10.5:1
Fuel requirement	Premium unleaded, 91 pump octane.
Fuel and ignition system	ME 2.8 engine management. Integrated sequential multipoint fuel injection and phased twin-spark ignition includes individual cylinder control of fuel spray, spark timing and phase, and antiknock. Two high-energy ignition coils and two spark plugs per cylinder, with 100,000-mile spark plug intervals. Electronically controlled throttle.
Intake system	Magnesium 2-stage resonance intake manifold increases the intake runner length at lower rpm for improved response. (E55 AMG also includes enlarged-diameter intake runners for higher-rpm mode.)
Transmission	Electronic 5-speed automatic with driver-adaptive control. Touch Shift allows driver to manually downshift and allow upshifts by nudging the shift lever to the left or right from the Drive position. Driver-selectable winter mode starts vehicle moving in 2nd gear or a special second Reverse gear to help improve takeoff on slippery surfaces. Display in instrument cluster indicates selected gear range.
Rear axle ratio	2.82:1

TRACTION AND STABILITY

Electronic Stability Program (ESP) and Automatic Slip Control (ASR)	ESP compares the driver's intended course, via steering and braking inputs, to the vehicle's response, via lateral acceleration, rotation (yaw) and individual wheel speeds. ESP then brakes individual front or rear wheels and/or reduces excess engine power as needed to help correct understeer (plowing) or oversteer (fishtailing). ESP incorporates the functions of ASR traction control, which senses drive-wheel slip and individually brakes the slipping wheel or wheels, and/or reduces excess engine power, until control is regained. ¹
--	--

CHASSIS

Suspension	Front: Independent double wishbone with triangular lower control arms, antidive geometry and stabilizer bar. Rear: Independent 5-arm multilink with geometry for antilift, antisquat and alignment control and stabilizer bar. Separate AMG-Bilstein gas-pressurized shock absorbers and progressive-rate coil springs. Larger, solid stabilizer bars.
Steering	Rack-and-pinion with speed-sensitive power assist and integral hydraulic damper. 3.2 steering-wheel turns, lock-to-lock. Turning circle: 37.2 ft/11.34 m, curb-to-curb.
Wheels , aluminum-alloy	AMG monoblock, 5-slot design. 8.0Jx18 front, 9.0Jx18 rear.
Tires , steel-belted radial	245/40ZR18 front and 275/35ZR18 rear, high-performance. ²

¹ No system, regardless of how sophisticated, can repeal the laws of physics or overcome careless driving actions. Please always wear your seat belt. ² Z-rated tires are optimized for performance driving and may provide reduced ride comfort, increased tire noise, substantially increased treadwear and greater susceptibility to damage compared with H-rated tires. ³ Stated rates of acceleration are based upon manufacturer's track results and may vary depending upon model, environmental and road surface conditions, driving style, elevation and vehicle load. ⁴ 2001 EPA estimated fuel economy. Compare the estimated mpg to the estimated mpg of other vehicles. You may get different mileage depending on how fast you drive, weather conditions and trip length. 2002 figures unavailable at time of publication. See your dealer. ⁵ Your actual highway mileage will probably be less than the highway estimate. 2001 figures shown. 2002 figures unavailable at time of publication. See your dealer.

BRAKES

Brakes, dual-circuit power-assisted
Antilock Braking System (ABS)

Brake Assist

E55 AMG SPORT SEDAN

AMG 4-wheel ventilated disc. Two-piece front rotors with 4-piston calipers. ABS senses impending wheel lockup under heavy braking and pumps the front brakes individually or the rear brakes together (to help maintain stability) as needed up to 30 times per second, to prevent lockup and maintain steering ability. Upon sensing emergency braking via the speed at which the driver presses the brake pedal, Brake Assist immediately applies maximum available power boost, potentially reducing overall stopping distance by eliminating the delay caused by a common human tendency not to brake hard enough, soon enough. Letting up on brake pedal releases Brake Assist. Braking effectiveness also depends on proper brake system maintenance, and tire and road conditions.

PERFORMANCE

Acceleration , 0-60 mph ³	5.4 seconds
Fuel economy , EPA ⁴ /highway ⁵ estimate	17 mpg/24 mpg
Emission certification	Low Emission Vehicle (LEV).

DIMENSIONS

Wheelbase	111.5 in/2,833 mm
Overall length	189.4 in/4,810 mm
Overall height	56.9 in/1,445 mm
Overall width	70.8 in/1,799 mm
Track (front, rear)	61.4 in/1,560 mm, 60.8 in/1,543 mm
Coefficient of drag	0.29
Curb weight	3,768 lb/1,715 kg
Headroom (front, rear)	37.6 in/954 mm, 37.2 in/944 mm
Legroom (front, rear)	41.3 in/1,050 mm, 36.1 in/918 mm
Shoulder room (front, rear)	56.3 in/1,431 mm, 57.1 in/1,450 mm
Cabin capacity	95.0 cu ft/2,690 liters
Cargo capacity	15.3 cu ft/434 liters



SPORT PACKAGE



E-CLASS SPORT PACKAGE FEATURES: Value doesn't have to be boring, especially in a luxury car. And while the E-Class is anything but boring, the Sport Package option will give your E320 Sedan or E430 Sedan a sculpted bumper-to-bumper presence that's unmistakably fun to drive and the envy of those who can only watch – and dream. **On the Road:** The Sport Package option puts your E-Class on athletic 5-spoke 8.0x17 alloy wheels and road-gripping 235/45 WR17 high-performance tires¹ for an energized stance and further energized handling. **Up Front:** For the front lower bodywork, the AMG designers crafted an aggressively contoured front air dam. Round projector-beam front foglamps complete the bold expression. **Side-to-Side:** Sculpted skirts wrap the lower sides of your E 320 Sedan or E 430 Sedan, accentuating the car's streamlined allure. **Looking Back:** An elegantly shaped rear apron adds the finishing touch, turning value into artfully exciting fun.

¹W-rated tires are optimized for performance driving and may provide reduced ride comfort, increased tire noise, substantially increased treadwear and greater susceptibility to damage compared with H-rated tires. Tire manufacturers may vary.



designo EDITIONS



SILVER EDITION

You'd be right to assume a Mercedes is an exceptional machine, particularly America's best-selling luxury sedan, the E-Class! Nonetheless, we know that there are a handful of people who want their cars to offer even more distinction. For those with that true passion for superlative design and craftsmanship, we offer our *designo* editions. Lovingly handcrafted interiors with the finest grades of leather and hand-selected wood give these automobiles all the earmarks of collectors' cars. The Nappa leathers used throughout the cabins are treated with care to preserve their natural beauty and supple feel. Unlike ordinary leathers – which often have textures pressed into them – our Nappa leathers retain their original, smooth grain. In the E-Class Silver Edition, *designo* Charcoal leather is used on the seats and trim, embracing occupants with a soft caress. Elegant Natural maple wood trim complements the sumptuous leather, and shimmering *designo* Silver paint – which must be seen to be appreciated – adds a distinctive finishing touch. The end results are these extraordinary automobiles, destined to be enjoyed by a few very fortunate individuals.

ESPRESSO EDITION

You can sense the heritage of these automobiles in the artfully composed, handcrafted interiors. You can feel the craftsmanship of our *designo* editions in the smooth surfaces of the extraordinary leather. And you can see the beauty in the carefully selected and richly detailed wood. In fact, *designo* woods are shaped and finished by hand, then matched by the expert eye of a craftsman. This ensures that every piece of trim in each *designo* edition contributes to the singular character and harmonious feeling that only a master's touch can create. In the E-Class Espresso Edition, Natural elm wood trim graces the console, dash and doors. Light Brown Nappa leather dresses the seats, doors and floor mat borders, further accentuating the exclusivity of these models. Outside, Mocha Black paint signals that this is not your typical E-Class. With their unique statements of style, these packages are not for everyone. But if you cherish quality and precious guard your individuality, a *designo* edition might be just for you.



E 320 Sedan Silver Edition and E 430 Sedan Espresso Edition shown with optional sunroof and heated front seats. E 320 and E 430 *designo* editions require heated front seats, and are not available on 4MATIC™ models. 1 Calendar-year 2000 sales. Source: *Automotive News*, January 8, 2001.



Hand-fitted leather. Hand-finished wood.

The work of countless talented craftspeople,
each intent on fulfilling your slightest whim.

Is it possible to feel relaxed and invigorated at the same time? If it is, this is where you'll find out. Soft, perforated premium leather¹ welcomes you, and hand-polished burl walnut warms your psyche. Up to three drivers can choose from three separate memory positions—just touch a single button to recall your favorite seat, outside mirror and steering wheel settings. An available 8-speaker Bose® sound system² fills the cabin with custom-tailored sound, and the standard 4-in-1 in-dash control panel lets you control the radio, tape, plus the optional CD changer and phone with amazing ease. Frequently used functions can also be handled right from the multifunction steering wheel, helping you keep your eyes on the road ahead.



E320 Sedan. ¹ On E320 wagons, leather seating inserts are standard, and premium leather upholstery is optional. ² Standard on E430 and E55 AMG models, optional on E320 models.



E 320 Sedan.

We're confident you'll be spending a lot of time behind the wheel of your E-Class, so you might as well be comfortable. Both the driver's and front passenger's seats are power-operated and 10-way adjustable. The front seats can be equipped with heaters – or, if you prefer, choose Active Ventilated front seats with heating elements and a system of internal fans to circulate cooling air through the perforated leather. The dual-zone climate control system automatically adjusts temperature and airflow in left and right comfort zones, and filters out dust, pollen and odors. It can sense smog and act to keep the bad air out. Or feel where the sun is shining, and redirect airflow to compensate. It can even help keep the car warm for you while you're away – click the climate control into REST mode, and it provides up to 30 minutes of residual heat after you've turned off the engine. A final touch: the auto-dimming left-side and inside mirrors, which sense the headlamps of following cars and automatically adjust themselves to help reduce glare.



Dual-zone automatic climate control system.



Auto-dimming mirror.



Power windows with express-open/close.



Premium leather upholstery.



Auto-dimming mirror and HomeLink® transmitter.



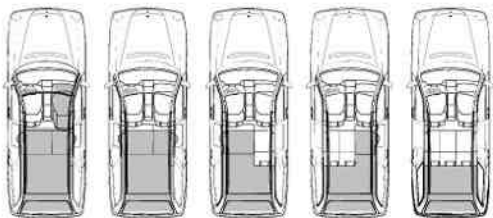
Remote trunk opener.



Retractable dual front cupholder.



You're capable of accomplishing almost anything.
An E-Class wagon feels exactly the same way.



Folding third-row seat.



Partition net.

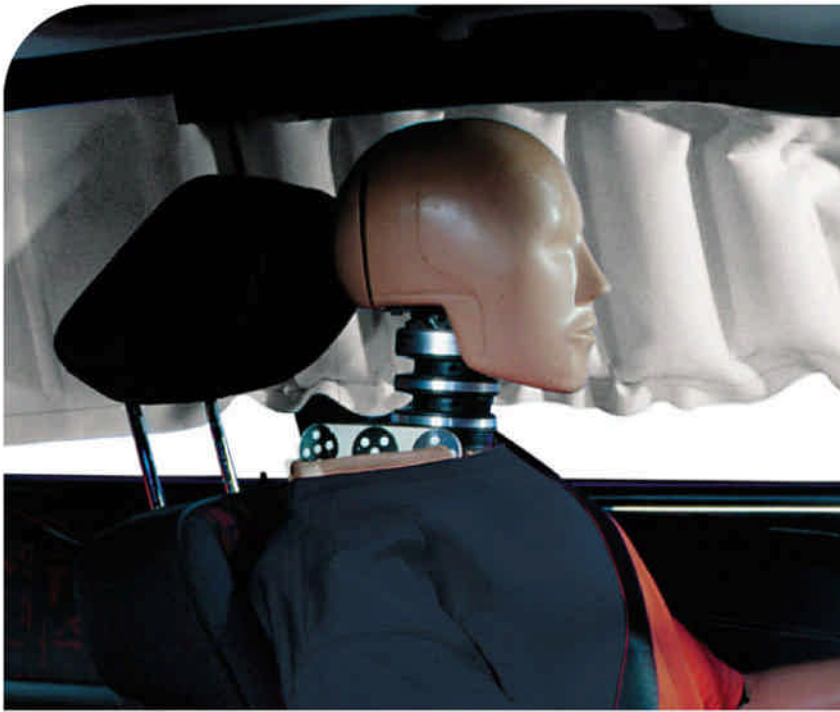


Luggage cover.



E320 Wagon shown with optional heated front seats. 1 Properly secure all cargo.

What can you do inside an E-Class wagon? Just about anything you want to. With the seats open for business, it has all the atmosphere and safety engineering that have made the E-Class sedans so justifiably famous – but with a pair of rear-facing seats nestled in the back. And when it's time to move things, rather than people, the seats easily fold down to give you exactly the right mix of cargo and pampered humanity.¹ The third-row seat folds flat into the floor quickly, giving you instant room for luggage or groceries, and a retractable/removable partition net and luggage cover help keep your stuff securely stowed. And the second-row seats fold down with a 60/40 split, so you can carry long objects, like your favorite pair of skis, and still have plenty of room for one or two second-row passengers. If you really need more room, you can always configure the front passenger seat so you can carry lumber, antique lamps, or other long, bulky items. Come to think of it, isn't that what luxury is all about – getting exactly what you want, exactly the way you want it?



Every Mercedes-Benz is engineered as a total, integrated system, not as an automobile with an assortment of of added-on features. It all starts with the monocoque body structure, which is designed to help keep the passenger cabin intact in a collision, using advanced crumple zones to absorb energy and direct a substantial portion of it around the high-strength-steel-reinforced passenger cabin. The E-Class has a comprehensive array of eight sophisticated air bags that provides 10-way protection, playing a vital role in injury prevention. The driver and front-seat passenger are protected by individual front air bags, and all outboard passengers, front and rear, are protected by individual side-impact air bags mounted in the doors, and Head Protection Curtains that deploy along the front and rear side-door glass! Three-point seat belts are provided for all seating positions, and Emergency Tensioning Retractors are provided for all forward-facing outboard seat belts, removing seat belt slack in a front or rear impact exceeding a preset threshold. But it doesn't stop there. The front seat belts are also equipped with belt force limiters, which help to distribute peak impact forces between the belts and the air bags. And if an air bag or Emergency Tensioning Retractor deploys, Tele Aid Automatic Collision Notification will call for help, and can help direct emergency services to your location, even if you can't.² Which is fitting, really. Because in such a meaningful relationship, you should never feel alone.



¹ WARNING: THE FORCES OF A DEPLOYING AIR BAG CAN CAUSE SERIOUS OR FATAL INJURY TO A CHILD UNDER AGE 13. THE SAFEST SEATING POSITION FOR YOUR CHILD IS IN THE REAR SEAT, BELTED INTO AN APPROPRIATE, PROPERLY INSTALLED CHILD SEAT, OR CORRECTLY WEARING A SEAT BELT IF TOO LARGE FOR A CHILD SEAT. **A CHILD UNDER 13 MUST NOT USE THE FRONT SEAT** UNLESS THE CHILD IS BELTED INTO AN APPROPRIATE, PROPERLY INSTALLED **BABYSMART-COMPATIBLE** CHILD SEAT. A CHILD UNDER 13 WHO IS TOO LARGE FOR A CHILD SEAT MUST NOT USE THE FRONT SEAT. SEE OPERATOR'S MANUAL FOR ADDITIONAL WARNINGS AND INFORMATION ON AIR BAGS, SEAT BELTS AND CHILD SEATS. ² Where cellular and Global Positioning System coverage are available. Subscription required for service, airtime and connection charges. First year's monitoring and connection charges plus 30 minutes airtime included at no cost with subscription.



It senses where you're headed.
 It knows what you need before you do.
 There's a reason they call it ESP.



E-Class 4MATIC™ models include the 4-wheel Electronic Traction System (4-ETS). If front or rear wheels start to slip, the innovative 4-ETS brakes them automatically, allowing torque to pass through the open center differential to the nonslipping wheel or wheels.



If there's ice on one side and dry pavement on the other, there's still no problem. 4-ETS brakes the slipping wheels, allowing the engine's torque to go where it does the most good.



If three of the wheels ever slip, 4-ETS is ready. It brakes all three slipping wheels, and the three differentials (front, center and rear) automatically allow thrust to pass to the wheel that's still hooked up and driving.



The E-Class won't finish your sentences, but its intelligent handling systems can help you maneuver out of a tight spot now and then. The Electronic Stability Program (ESP) monitors the car's response to your steering and braking, applying individual brakes and/or reducing engine power to counteract fishtailing or plowing in turns. Automatic Slip Control (ASR) senses drive-wheel slip under acceleration, and can brake the slipping wheel and/or reduce excess engine power.³ The Antilock Braking System (ABS) helps keep brakes from locking, helping you maintain steering ability. And Brake Assist, a Mercedes-Benz innovation, applies maximum boost when it senses an emergency braking situation, potentially shortening a panic stop.⁴

³ No system, regardless of how sophisticated, can repeal the laws of physics or overcome careless driving actions. Please always wear your seat belt. ⁴ Braking effectiveness also depends on proper brake system maintenance, and tire and road conditions.

TELE AID



Hold that thought. Better yet, hold a ton of them.

While we're busy engineering some of the world's most sought-after cars, you're busy taking care of what is supposed to be an ordinary, stress-free life. Which is why our Tele Aid Concierge Service¹ is more than happy to help when it comes to bringing order to chaos. If you're too busy to see your doctor, we can reschedule your appointment. Anniversary? Tele Aid Concierge Service will arrange your dinner reservations and babysitter services, and even have flowers sent to you-know-who. When it comes to travel, car rental and hotel reservations, or tickets to sporting and cultural events, Tele Aid Concierge Service is there to help make the arrangements. If you need to be in the know when it comes to stock quotes, news, weather and sports, simply set up our optional customized Tele Aid Info Services,² and you can download it all at the touch of a button. And see to it that productivity has taken fair occupancy in the passenger seat.

If you can point and push, you can use Tele Aid. Soon after you push one of these buttons, just speak into your car's integrated hands-free microphone, and we're there.



THE *i*-BUTTON

Push the *i*-button and our helpful Customer Assistance Center experts will be glad to answer almost any questions you have about your Mercedes, from "Where's the nearest dealer?" to "What's this button for?"



THE WRENCH BUTTON

If your tire's flat, you're out of gas or a warning indicator is lit, the wrench button comes to the rescue. Tele Aid will even tell us your car's model, color, location and even diagnostic codes, so we can dispatch Roadside Assistance if necessary.³



THE SOS BUTTON

If you need emergency assistance, press the Tele Aid SOS button, and emergency response personnel will detect your car's location. And should an air bag or seat-belt Emergency Tensioning Retractor deploy, help will automatically be called.

Mercedes **CARE**

SUPPORT & SERVICE

Unparalleled support. Just part of your Mercedes experience.

We're committed to making your ownership experience the best you've ever had—24 hours a day, every day of the year. And with features like regular maintenance at no extra charge,⁴ even having your vehicle serviced should prove quite satisfying.

24-HOUR CUSTOMER ASSISTANCE

Our Customer Assistance Center is your one-stop source for all information regarding your Mercedes-Benz. Whether you need to know how to use your audio system, find your nearest Mercedes-Benz Center, get pricing details on new vehicles, or learn about personal and automotive accessories, just call or press the *i*-button—we'll be happy to assist you.

24-HOUR ROADSIDE ASSISTANCE

The first of its kind, the Mercedes-Benz Roadside Assistance program is still the only one that never expires. Our Roadside Assistance technicians are accomplished problem-solvers who can draw on years of experience and training to get you back on the road as quickly as possible.³

SIGN AND DRIVE

Mercedes-Benz Roadside Assistance will bring you some fuel if you've run out, replace a flat tire with your spare or jump-start your car if your battery is dead—all at no charge. And all for as long as you're driving a Mercedes-Benz. Even somebody else's.⁶

MERCEDES-BENZ WARRANTIES

The New Vehicle Limited Warranty runs 48 months or 50,000 miles, whichever comes first. And you can also opt for a Mercedes-Benz Extended Limited Warranty that will provide additional protection when the New Vehicle Limited Warranty expires.⁵



TRIP INTERRUPTION REIMBURSEMENT

In the unlikely event that a breakdown covered by your MBUSA New Vehicle Limited Warranty occurs more than 100 miles from your home, leaves your Mercedes inoperable or unsafe to drive, and requires overnight repairs at a Mercedes-Benz Center, you'll be reimbursed up to \$300 per day for actual documented expenses—for up to three days—for meals, lodging and substitute transportation.

FLEXIBLE SERVICE SYSTEM

No two drivers are the same. So rather than applying one maintenance schedule to every vehicle, the Flexible Service System in your Mercedes monitors the oil quality, engine loads, rpm, operating temperatures and your driving habits to determine precisely when regular maintenance is necessary. Then a display on the dash reminds you to contact your Mercedes-Benz Center for an appointment.

THE MERCEDES-BENZ MAINTENANCE COMMITMENT

For the duration of your New Vehicle Limited Warranty, regular maintenance costs nothing. Zero. Zip. So when the Flexible Service System in your Mercedes calls for maintenance, the expert technicians at your local Mercedes-Benz Center will do the work at no charge.⁴

ALTERNATE TRANSPORTATION

When you bring your vehicle in to your Mercedes-Benz Center for warranty service, ask about the Alternate Transportation Program—so you can return to your busy schedule.⁷

¹ Where cellular and Global Positioning System coverage are available. Subscription required for service, airtime and connection charges. First year's monitoring and connection charges plus 30 minutes airtime included at no cost with subscription. Concierge Service included at no cost with basic Tele Aid subscription. ² Requires basic Tele Aid subscription and optional COMAND system. For safety reasons, we encourage the driver to stop the vehicle in a safe place before reading downloaded information. ³ Roadside Assistance repairs may involve charges for parts, service and towing. Depending on the circumstances, these services may be provided by an outside service, courtesy of Mercedes-Benz Roadside Assistance. ⁴ Maintenance need is determined by the Flexible Service System, and wear items are not covered. Please see your dealer. ⁵ For full details of Sign and Drive services, as well as the Roadside Assistance Program, please see your dealer. ⁶ Please see your dealer for warranty details as well as for terms, conditions and pricing for extended warranty options. ⁷ Certain restrictions may apply. Terms, conditions and dealer participation may vary.

OPTIONS



- The optional COMAND system includes onboard GPS navigation and a CD-ROM/CD player.¹
 - Miniature internal fans help keep you comfortable and cool in the optional Active Ventilated front seats.
 - Parktronic, a special-order option, can alert you to nearby objects during parking maneuvers.
- ¹ CD-ROM maps do not cover all areas nor all routes within an area. One regional CD-ROM is included with vehicle. COMAND deletes standard cassette player. ² Delayed availability. See your dealer.



- Heated front seats are a soothing option on any E320 or E430 model, adding welcome comfort.
- The optional 6-disc CD changer, operated from the in-dash radio, provides hours of entertainment.
- At the touch of a button, you can express-open the optional power tilt/sliding tinted glass sunroof.



- For brighter forward illumination, opt for xenon headlamps with heated high-pressure washers.
- The E-Class Option Package E2 includes a rain-sensing automatic intermittent windshield wiper.
- Use the optional Motorola Timeport[®] digital phone in your E-Class or away from the car.





- Turn your E 320 into a true audiophile's dream with the optional Bose® sound system.
- Add the optional power rear-window sunshade to your E-Class sedan to help keep the cabin cooler (standard on the E 55 AMG).
- The accessory Motorola V60™ digital phone is ultra-compact and features an aluminum case.²



- The optional multicontour front seats include pneumatic side, lumbar and thigh supports.
- Mix more luxury with practicality in your E 320 Wagon by opting for premium leather trim.



- E 320 AND E 320 4MATIC™ SEDANS
- E 320 AND E 320 4MATIC WAGONS
- E 430 AND E 430 4MATIC SEDANS
- E 55 AMG SPORT SEDAN

OPTIONS AND PACKAGES

- ○ ○ ● Power tilt/sliding tinted glass sunroof with one-touch express-open.
- — ● Power rear-window sunshade.
- ○ ○ ● Heated front seats.
- ○ ○ ○ Active Ventilated front seats with internal cooling fans plus heating feature.
- ○ ○ ● Multicontour front seats with pneumatic side, lumbar and thigh supports.
- ○ ○ ○ COMAND integrated navigation system, radio and single-CD player/CD-ROM drive. In-dash navigation system uses GPS satellites to pinpoint the current location of your car, and map databases on CD-ROM.³
- ○ ○ ○ Integrated 6-disc CD changer, mounted in trunk (sedans) or behind cargo-area sidewall (wagons).⁴
- ○ ○ ○ Integrated Motorola Timeport® dual-band digital portable telephone, with or without voice control system for operation of commonly used telephone and audio system features.⁴
- ○ ○ ○ Metallic paint (no extra charge on E 430 or E 55 AMG).
- ○ ○ ○ Premium leather upholstery (including 3rd-row seat on E 320 wagon models).
- ⁵ ○⁵ ○⁵ ○⁵ Parktronic audio-visual parking assistance system uses sound waves to help detect nearby obstacles at low speeds, alerting driver to their proximity and direction via illuminated and audible indicators on dash and rear-cabin ceiling. Option includes dual rear-seat reading lamps.
- ○ ○ ● **Package E1:** Xenon High Intensity Discharge low-beam headlamps with heated headlamp washers.
- ○ ○ ● **Package E2:** 8-speaker Bose sound system (standard on E 430 models). Power tinted glass sunroof. Rain-sensing automatic intermittent windshield wiper.
- — — **Sport Package E3:** Four 17" 5-spoke alloy wheels with 235/45R 17 94W high-performance tires.⁶ AMG-designed sculpted front apron, side sills and rear apron. Round projector-beam front foglamps. (Sport Package is not available on 4MATIC models.)
- ○ ○ ○ **Package K2:** 6-disc CD changer. Motorola Timeport phone.⁴
- ○ ○ ○ **Package K2a:** 6-disc CD changer. Motorola Timeport phone with voice control system.⁴

³ Deletes standard cassette player and dash pocket. CD-ROM maps do not cover all areas nor all routes within an area. One regional CD-ROM is included with vehicle. ⁴ Dealer-installed as individual accessories. Factory-installed as part of Package K2 or K2a. ⁵ Special-order option. Vehicles with special-order items, colors or trim combinations incur a one-time surcharge and may require additional production time. ⁶ W-rated tires are optimized for performance driving and may provide reduced ride comfort, increased tire noise, substantially increased treadwear and greater susceptibility to damage compared with H-rated tires.

● STANDARD ○ OPTIONAL — NOT AVAILABLE