



MASERATI

QUATTROPORTE



**WARRANTY**

Transferable four year / 50,000 mile new car limited warranty with 24/7 Roadside Assistance.

**SERVICE\***

First service at 12,500 miles or after one year of the vehicle's life and subsequently every 12,500 miles or one year (whichever occurs first).

**MAINTENANCE PROGRAM\***

For more information, please contact your local Authorized Maserati Dealer.

\*Not included in the base price.

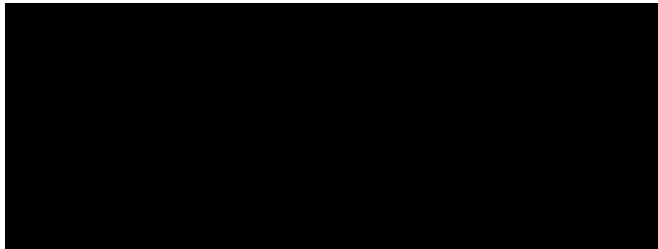
---

## FEATURES, OPTIONS AND QUATTROPORTE ACCESSORY PACKS

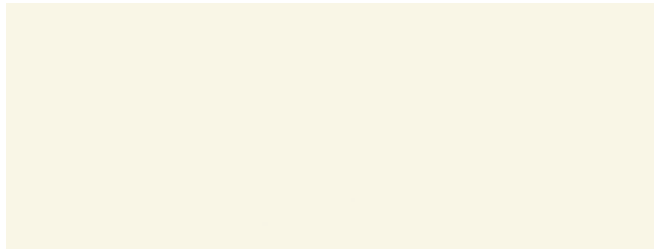
---

Quattroporte is a celebration of Italian style, performance and exclusivity, and seeing a Maserati Quattroporte on the road is truly an event. Maserati offers a wide selection of features, options and special accessory packs that allow owners the opportunity to make their Quattroporte truly unique. Customers can choose from an array of paint finishes, interior appointments—including the Bowers & Wilkins Premium Surround Sound System—wheels and brake calipers. A range of Quattroporte Accessory Packs combine specific options that work especially well together to deliver even greater value than if ordered individually. Your Authorized Maserati Dealer will be pleased to help you specify a Quattroporte to your exacting personal requirements.

SOLID PAINTS

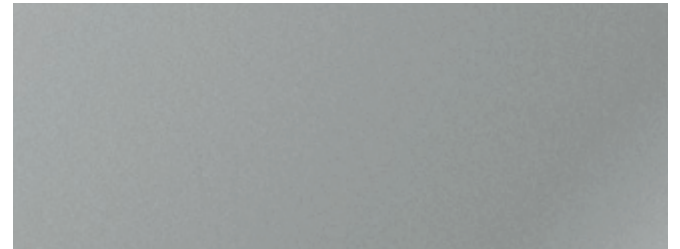


Nero



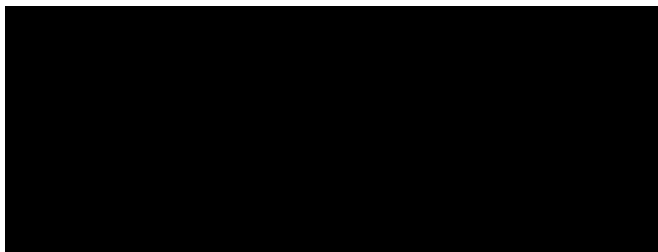
Bianco

METALLIC PAINTS



Grigio Metallo

MICA PAINTS



Nero Ribelle

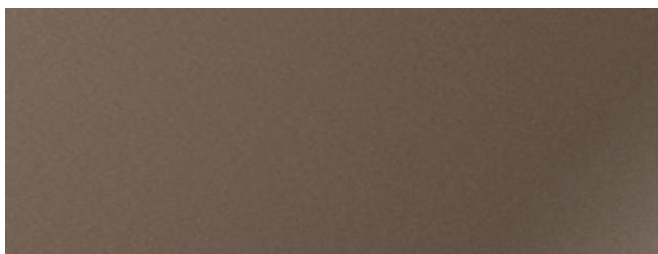


Blu Passione

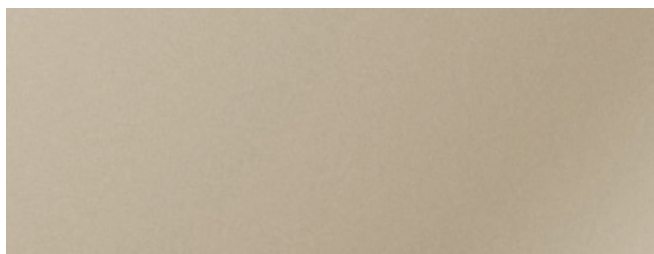


Rosso Folgore

METALLIC PAINTS

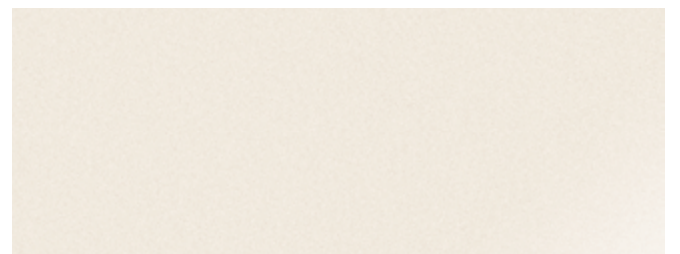


Bronzo Siena



Champagne

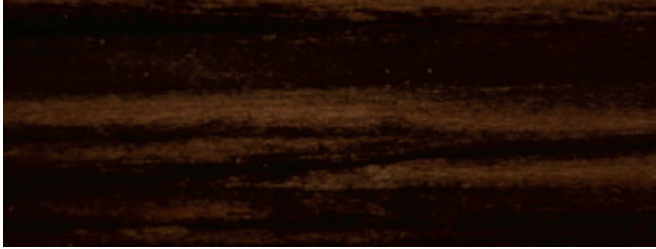
PEARLESCENT PAINT



Bianco Alpi



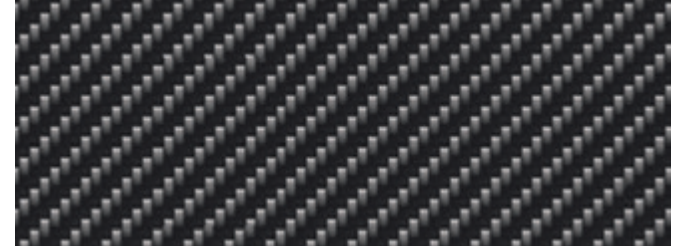
INTERIOR TRIM



Ebano



Tanganika



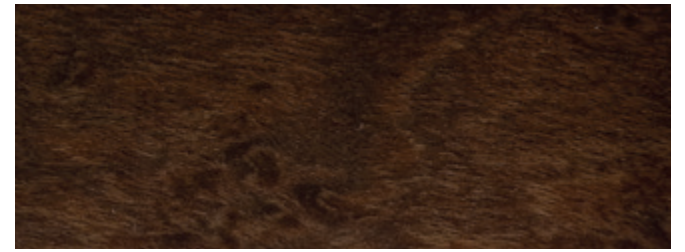
Carbonio



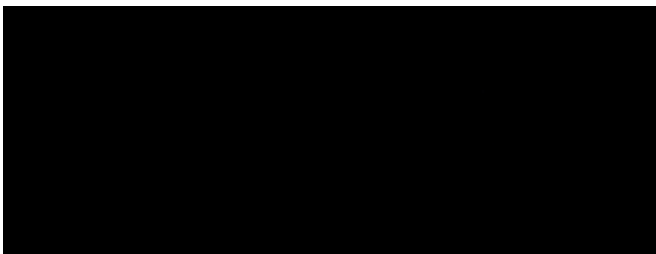
Radica



Rovere Chiaro



Erable



Black Piano

**UPPER DASHBOARD / UPPER DOOR PANELS**

STD				
OPT				
	Nero	Marrone	Tortora	Blu

**LOWER DASHBOARD / SIDE DOOR PANELS AND ARMREST / CENTRAL TUNNEL**

STD						
OPT						
	Nero	Marrone	Tortora	Sabbia	Cuoio	Rosso

**UPPER DASHBOARD / UPPER DOOR PANELS STITCHING OPTIONS**

Nero Stitching Rosso	Nero Stitching Grigio	Nero Stitching Cuoio	Nero Stitching Sabbia

**SEATS**

STD						
OPT						
	Nero	Marrone	Tortora	Sabbia	Cuoio	Rosso

**SEATS STITCHING OPTIONS**

Nero Stitching Rosso	Nero Stitching Grigio	Nero Stitching Cuoio	Rosso Stitching Nero

**STEERING WHEEL**



Nero



Marrone



Tortora

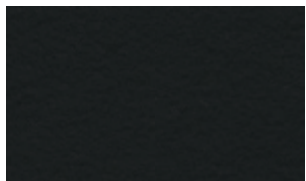


Sabbia

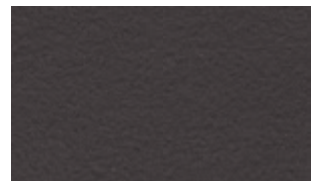


Blu

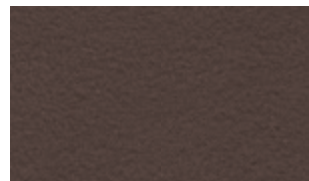
**CARPET / SEAT BELTS**



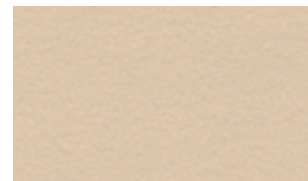
Nero



Marrone



Tortora



Sabbia

**HEAD LINING**



Nero



Grigio



Tortora\*



Sabbia



**TRITONE**

- \* Dimensions: 19 in
- \* Front tire: 245/45 R 19
- \* Rear tire: 275/40 R 19



**APOLLO**

- \* Dimensions: 19 in
- \* Front tire: 245/45 R 19
- \* Rear tire: 275/40 R 19



**CRONO**

- \* Dimensions: 20 in
- \* Front tire: 245/40 R 20
- \* Rear tire: 285/35 R 20



**MERCURIO**

- \* Dimensions: 20 in
- \* Front tire: 245/40 R 20
- \* Rear tire: 285/35 R 20



**GTS ANTRACITE**

- \* Dimensions: 20 in
- \* Front tire: 245/40 R 20
- \* Rear tire: 285/35 R 20



**GTS SILVER**

- \* Dimensions: 20 in
- \* Front tire: 245/40 R 20
- \* Rear tire: 285/35 R 20



**TITANO**

- \* Dimensions: 21 in
- \* Front tire: 245/35 R 21
- \* Rear tire: 285/30 R 21



STANDARD



Anodized Red (GTS)



Oxidized Black (Q4)

OPTIONAL



Red



Black



Blue



Silver

WHEELS & CHASSIS	S Q4	GTS
19-inch alloy wheels - Tritone (245/45 R19 front; 275/40 R19 rear)	●	○
19-inch alloy wheels - Apollo (245/45 R19 front; 275/40 R19 rear)	○	○
20-inch alloy wheels - Crono (245/40 R20 front; 285/35 R20 rear)	○	○
20-inch alloy wheels - Mercurio (245/40 R20 front; 285/35 R20 rear)	○	○
20-inch forged alloy wheels - GTS Silver (245/40 R20 front; 285/35 R20 rear)	○	○
20-inch forged alloy wheels - GTS Antracite Diamantato (245/40 R20 front; 285/35 R20 rear)	-	●
21-inch forged alloy wheels - Titano (245/35 R21 front; 285/30 R21 rear)	○	○
Brake calipers oxidized Black	●	-
Brake calipers painted Black	○	○
Brake calipers painted Red	○	○
Brake calipers painted Blue	○	○
Brake calipers painted Silver	○	○
Brake calipers anodized in red specific GTS	-	●
Space saver spare wheel 18-inch	○	○
ZF-8 speed automatic transmission; with tip up/down function from gear-knob and fully manual mode (activation by specific button)	●	●
PERFORMANCE BRAKING SYSTEM: Front Brakes: 6-pistons aluminum monobloc fixed calipers with dual-cast ventilated drilled discs 380x34mm Rear Brakes: 4-pistons aluminum monobloc fixed calipers ventilated discs 350x28mm)	-	●
Front Brakes: 6-pistons aluminum monobloc fixed calipers with dual-cast ventilated drilled discs 360x32mm Rear Brakes: 4-pistons aluminum monobloc fixed calipers ventilated discs 350x28mm)	●	-
Skyhook - electronically controlled suspension system	●	●
Skyhook manually adjustable on two stiffness level with dedicate control button	●	●
Start and Stop engine function	-	-

SAFETY	S Q4	GTS
Adaptive Bi-xenon front headlamps	●	●
Day Running Light (DRL)	●	●
Adaptive Front Lighting System (AFS)	●	●
Hi-Pressure front headlamps washing system	●	●
Full LED Taillamps and third stop light integrated into the rear window	●	●
Automatic headlamp activation	●	●
Parking lights	●	●
Air-bag system: dual stage front bags (driver and passenger), side bags, head bags	●	●
Poggiatesta anteriori con sistema attivo di protezione dal colpo di frusta	●	●
Front and rear seat belts with pre-tensioners and load limiters; rear seat belts	●	●

SAFETY cont.	S Q4	GTS
MSP - includes: - maserati stability program (MSP) - acceleration slip regulation (ASR) - antilock braking system (ABS) - electronic brake distribution (EBD) - Maserati drag torque control (MSR)	●	●
Hill Holder	●	●
Electronic Parking Brake (EPB)	●	●
Tire Pressure Monitoring System (TPMS) with pressure displayed into the digital central cluster	●	●
Tire sealing compound and electric air compressor	●	●
Cruise Control	●	●
EXTERIOR EQUIPMENT	S Q4	GTS
Solid paint	●	●
Metallic paint	○	○
Mica paint	○	○
Metallescent paint	○	○
Pearlescent paint	○	○
Electric Sunroof, with tilting and sliding regulations	○	○
Chromeline exterior trim	●	●
Heated windshield nozzles	●	●
Lightweight trunk lid construction, with keyless opening and remote key unlocking	●	●
Front parking sensors with graphic indication of object distances on cluster display	●	●
Rear parking sensors with graphic indication of object distances on cluster display	●	●
Rear-view camera with imaging displayed on central MTC	●	●
Automatically dimming powered and heated exterior mirrors, electrically adjustable and foldable, with integrated LED turn lights	●	●
Twin, dual-pipe exhaust system in chrome-plated stainless steel	●	●
Twin, trapezoidal integrated dual pipe exhaust system in chrome-plated stainless steel	●	●
Quattroporte badge on rear trunk	●	●
Q4 badge on rear trunk	●	●
Rear Badge GTS, Red Accents (Front), Red Accents (C Pillar)	-	●
GTS exterior detailing (body colored bumpers and side skirts, front grille in black gloss, rear GTS badge, Trident with red highlights on alloy wheel centre caps, front grille and C-pillar logo)	-	●

● Standard  
○ Optional  
- Not Available

INTERIOR EQUIPMENT	S Q4	GTS
Fabric headlining	●	●
Alcantara® headlining	○	○
Poltrona Frau® leather interior upholstery for seats, upper and lower dashboard, armrests, handgrabs with tone on tone single stitching on seats and double stitching along upper dashboard	●	-
Poltrona Frau® fine-grain extended leather interior upholstery for seats, upper and lower dashboard, armrests, grab handles and door handles, upper and central door panels. Tone-on-tone double stitching along upper dashboard, upper door panel, door armrest and handles and seats with double stitching and specific design	○	●
Poltrona Frau® fine grain extended and perforated leather interior upholstery for seats (with perforated seat squab and backrest centres), upper and lower dashboard, armrests, grab handles and door handles, upper and central door panels. Tone-on-tone double stitching along upper dashboard, upper door panel, door armrest and handles and seats with double stitching and specific design	○	○
Poltrona Frau® fine grain extended leather and Alcantara® interior upholstery for seats (with Alcantara® seat squab and backrest centres), upper and lower dashboard, armrests, grab handles and door handles, upper and central door panels. Tone-on-tone double stitching along upper dashboard, upper door panel, door armrest and handles and seats with double stitching and specific design	○	○
Interior floor carpet in velour	●	●
Driver carpet with GTS logo sewed onto leather insert and velour	-	●
Contrast Stitching available in conjunction with Poltrona Frau® fine grain extended leather and perforated leather options	○	●
High-gloss wooden trimming for selected interior details: Erable	○	○
High-gloss wooden trimming for selected interior details: Tanganika	○	○
High-gloss wooden trimming for selected interior details: Ebano	○	○
Open-pore wooden trimming for selected interior details: Radica	●	○
Open-pore wooden trimming for selected interior details: Rovere chiaro	○	○
High-gloss Carbon finish trimming for selected interior details	○	○
High-gloss trimming for selected interior details: Black piano	○	●
Steering wheel and gear knob in fine Poltrona Frau® coloured leather	●	●
Steering wheel and gear knob in fine Poltrona Frau® Sabbia leather, with matching inserts	○	○
Steering wheel with wood insert and gear knob in fine Poltrona Frau® coloured leather	○	○
Steering wheel with high gloss carbon insert and gear knob in fine Poltrona Frau® black leather	○	○
Heated steering wheel in leather and wood insert	○	○
Sport pedals in brushed stainless steel	○	○
Maserati Active shifting: aluminum gear shift paddle mounted on the steering column	○	●
Front seats in standard leather electrically adjustable (8 ways + 4 ways for lumbar), heated, with 2 memories for driver side	●	●
Rear seat bench (3 places version), foldable at 40%	●	-
Rear seat bench (3 places version), foldable at 40%, lateral sx-dx heated	○	●
High thermal and noise insulation laminated glasses	●	●
Front armrest with twin mechanical opening, with illuminated storage compartment, air conditioned and 12V socket	●	●
Rear armrest with USB charger and 12V cigar lighter	●	●
Maserati clock in central area of the dashboard	●	-
Maserati clock in central area of the dashboard with specific for GTS (w/badge and red pointers)	-	●



INTERIOR EQUIPMENT cont.	S Q4	GTS
Trident logo embossed on headrests - front and rear	●	●
Two hidden front cupholders and 12V cigar lighter	●	●
Storage compartments: driver glove box; passenger glove box; Front and rear armrest, map pocket on front and rear doors, seatback pockets	●	●
Quattroporte badge on dashboard trim	●	●

COMFORT AND FUNCTIONALITY	S Q4	GTS
Home Link garage door opener	○	○
Power foot pedals	○	●
7-inch cluster display with onboard computer/driver infos	●	●
MTC: Maserati Touch Control unit. 8,4" touchscreen display, including: navigation, radio, CD/DVD audio/video player, SD card reader, USB and Aux-in (into dedicated compartment on front tunnel), Apple chip, bluetooth function for audio streaming, clima controls, phone devices, car set-up, etc.	●	●
White Night Ambient lighting, dimmerable	●	●
Dual-zone automatic climate control	●	●
Four-zone automatic climate control (when selected, the volume of the compartment under the front armrest is reduced by approximately 80%)	○	○
Power rear sunshade	○	●
Power rear lateral sunshades	●	●
Front seat ventilation	○	○
Steering column with power height and reach adjustments	●	●
Power-assisted steering, with speed sensitive feature	●	●
Standard audio system with 10 speakers (600W)	●	●
Bowers & Wilkins Premium Surround System with 15 speakers (1280W)	○	○
Two individual comfort rear seats: including heating, ventilation, power adjustment and front passenger seat movement (only in combination with four zone clima, Poltrona Frau® fine leather interior upholstery and drilled seats, power rear sunshade )	○	○
Pull-down tables	○	○
Rear Seat Entertainment and Pull down tables	○	○
Rear Seat Entertainment (TV tuner included) and Pull down tables	○	○
Aluminum Key fob, with Key-less entry and key less go function (includes also: Lock button, unlock button, trunk opening, exterior light on)	●	●
Rear doors Keyless Entry System	○	○
Easy entry - exit system for steering column and seat	●	●
Smoking kit (ashtray for cup-holders)	○	○
Wi-Fi Hot Spot	○	○
I.C.E. control (Increased Control & Efficiency): specific software for the easiest vehicle dynamic management in all conditions and reduced consumptions	●	●
Alarm system (perimeter and volumetric sensing, anti-lift device, electronic immobilizer)	●	●
Rain sensors	●	●
Quick reference user's guide (Printed) and DVD interactive user guide, browsable via MTC (Maserati Touch Control)	●	●

- Standard
- Optional
- Not Available

#### QUATTROPORTE PACKAGES

Unparalleled luxury, performance and exclusivity; three characteristics of Quattroporte, the flagship sedan from Maserati. Whether you choose the versatile S Q4 with intelligent all-wheel drive or the ultimate GTS, Quattroporte is an automobile destined for greatness. To adapt both Quattroporte models to your own needs and preferences, you might like to consider the special accessory packages that have been individually created for this exceptional automobile. Not only do they enhance the character and uniqueness of every Quattroporte, but they represent fantastic value for money, as well.

#### PREMIUM PACKAGE

This Package adds stylish features to the Quattroporte that make it even more exclusive.

	S Q4	GTS
Alcantara headliner and pillars	●	●
High gloss wood trim	●	–
Wood and leather steering wheel	●	●
Painted brake calipers in Black, Red, Blue or Silver	●	●

#### HEATING PACKAGE (INCLUDES PREMIUM PACKAGE)

This Package includes equipment to add comfort for rear passengers and further enhance driving under adverse weather conditions.

	S Q4	GTS
Alcantara headliner and pillars	●	–
High gloss wood trim	●	–
Wood and leather steering wheel	●	–
Painted brake calipers in Black, Red, Blue or Silver	●	–
Heated steering wheel	●	–
Heated rear seats	●	–
Power rear sunblind	●	–

**LUXURY PACKAGE (QPS LUXURY PACKAGE INCLUDES PREMIUM PACKAGE)**

For connoisseurs who want even more luxury and exclusivity in the interior of their Quattroporte, this package offers amenities that include drilled leather seating and enhanced cooling with ventilated front seats.

	S Q4	GTS
Alcantara headliner and pillars	–	●
Wood and leather steering wheel	–	●
Painted brake calipers in Black, Red, Blue or Silver	–	●
Heated steering wheel	–	●
Full natural drilled leather interior	●	●
Contrast stitching	●	–
Ventilated front seats	●	●
4-zone automatic climate control	●	●

**SPORT 20 PACKAGE**

Those wishing for an even more sporting driving experience can specify the larger-diameter wheel option specific to their respective models.

	S Q4	GTS
Painted brake calipers in Black, Red, Blue or Silver	●	●
20-inch Chrono wheels	–	●
20-inch Mercurio wheels	●	–
Inox sport foot pedals	●	●
Shift paddles	●	●

**SPORT 21 PACKAGE**

Make an unmistakable statement with the 21-inch Titano wheel—the largest-diameter, lowest-profile wheel/tire combination available for the Quattroporte.

	S Q4	GTS
Painted brake calipers in Black, Red, Blue or Silver	●	●
21-inch Titano wheels	●	●
Inox sport foot pedals	●	●
Shift paddles	●	–

- Standard
- Optional
- p Option as part of a package
- Not Available



[WWW.MASERATI.US](http://WWW.MASERATI.US)

[1-877-MY MASERATI / DRIVEMASERATI@MASERATIUSA.COM](mailto:DRIVEMASERATI@MASERATIUSA.COM)

MASERATI NORTH AMERICA, INC. / 250 SYLVAN AVENUE / ENGLEWOOD CLIFFS, NJ 07632