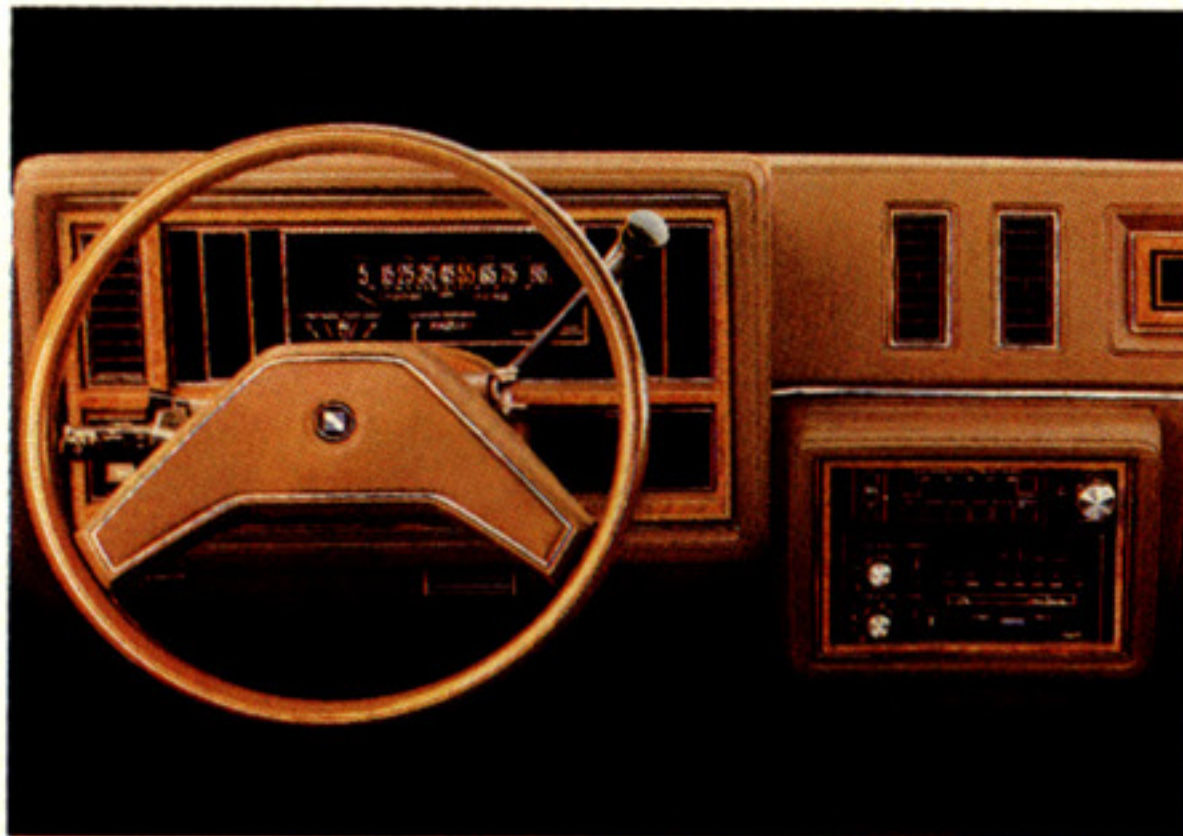


REGAL



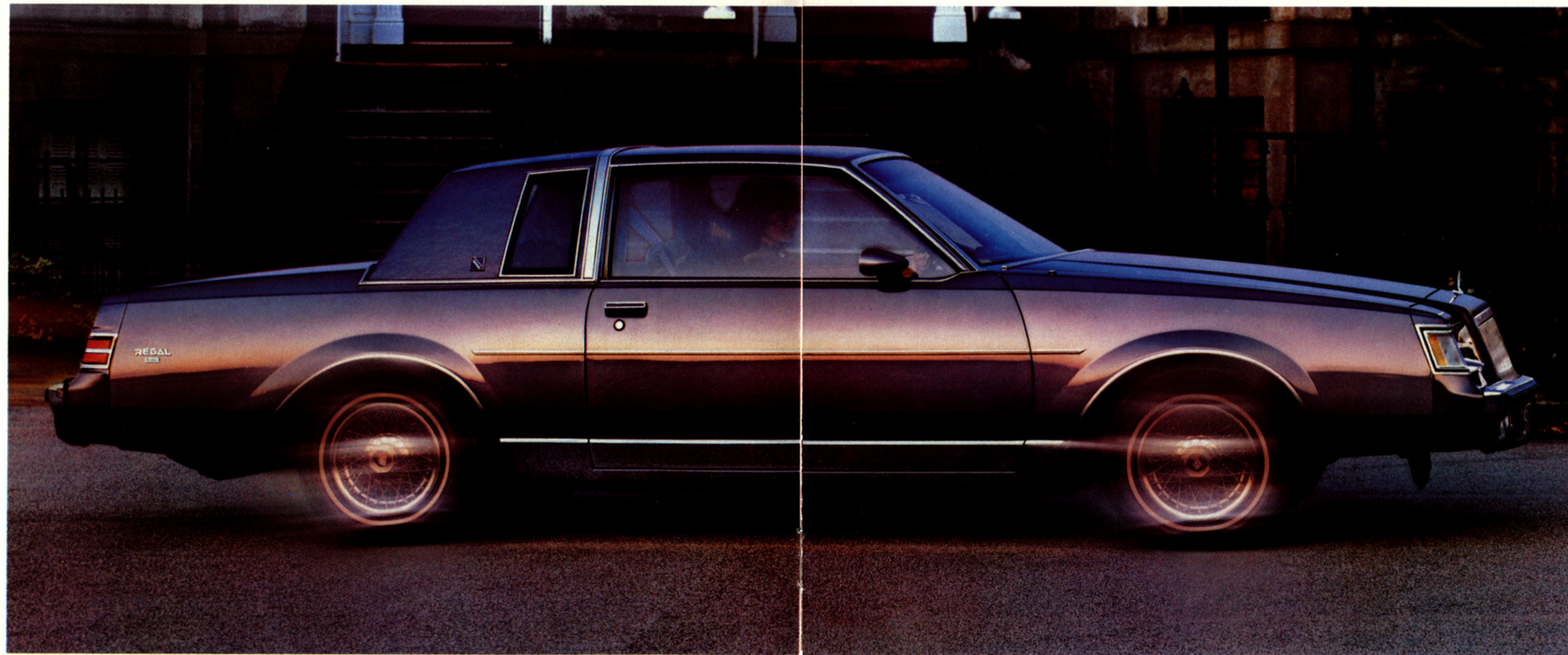
BUICK 1984

**1984 BUICK REGAL.
REGAL IT IS.**



Instruments in Canada are metric where required.

Even if this is your first look at a Buick Regal, you're sure to notice one major reason for its popularity: its crisp design. The sleek aerodynamic styling of the Buick Regal joins luxury inside the cabin and advanced technology under the hood. The resulting mixture appeals to your every sensibility.



The Regal Coupe, shown here, like the rest of the Regal lineup—Sedans, Limited Coupes and Sedans, and T TYPES—has received subtle exterior changes to keep it fully in step with the mid-Eighties. And the Regal aims to please. Regal's special touches show special concern for owner satisfaction. Regal benefits range from plush interior

appointments to the smooth-running gasoline engine. The Regal's interior will comfort you, and its performance will impress you.

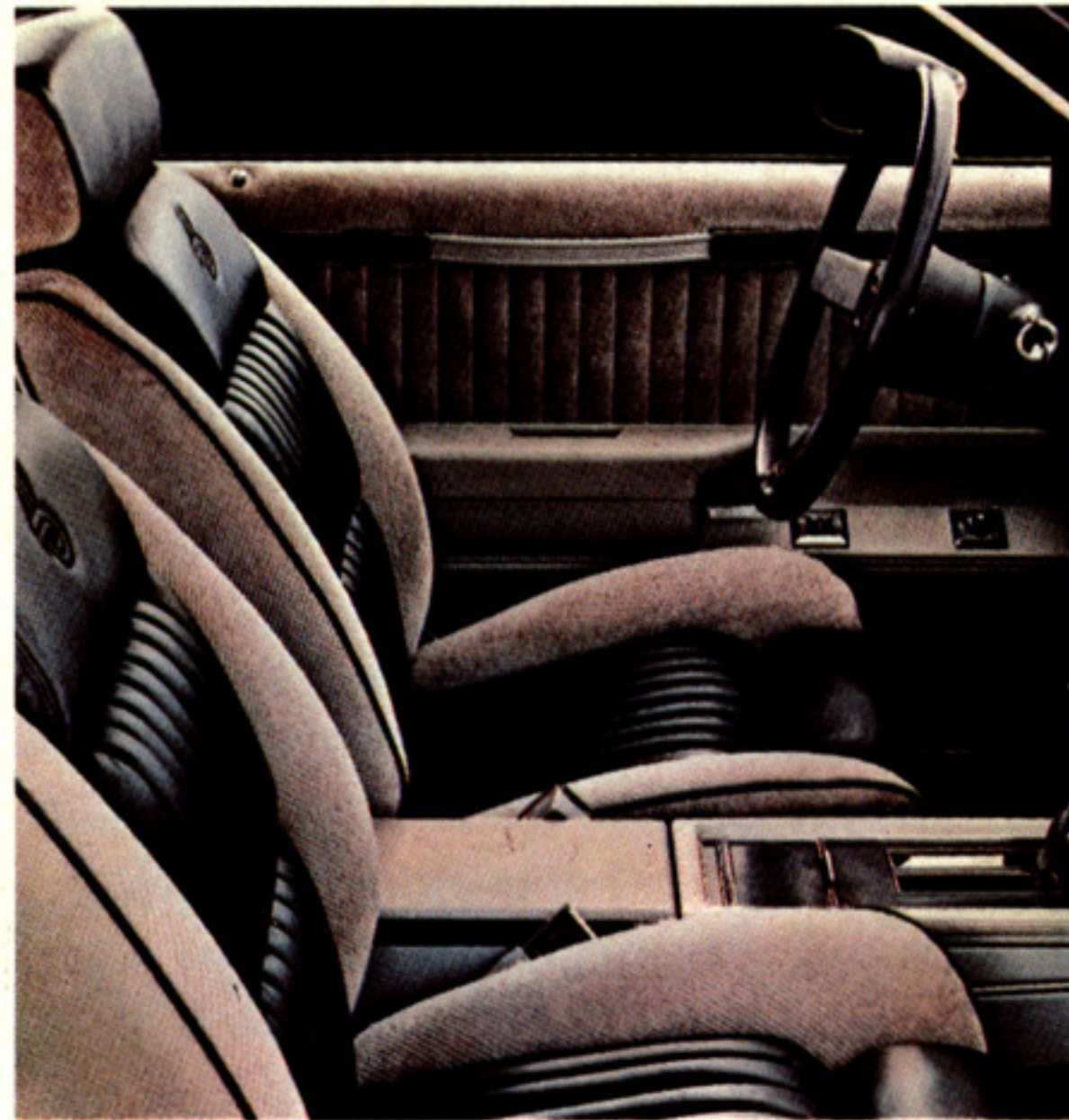
The Regal Limited Sedan is tempting, too—but this car's emphasis is on luxury. The smooth-riding comfort of this mid-size luxury car is the result of a suspension system that features computer-selected coil springs front and rear. The Regal Sedan also has such classic amenities as power steering and brakes and an automatic transmission, which come together to make driving a real pleasure. And the options list invites you to add even more luxury to the Regal Sedan.

The powerteams available in the Buick Regal show that it remains on the cutting edge of technology and performance. This year, the T TYPE's turbocharged 3.8 litre V-6 is thrust to the forefront with a host of major advancements, reaffirming Buick as a leader in turbocharged engine technology. The available Regal engines—normally aspirated 3.8 litre V-6, 5.0 litre four-barrel V-8 and 4.3 litre diesel V-6—span the gamut from performance to fuel economy.

Traditional features combine with an up-to-date powerteam to make the Regal Limited an example of elegant luxury and intelligent engineering. A combination that's tough to beat.

So get into a Buick Regal. You'll find out how well it lives up to its name.

**REGAL T TYPE
FROM TURBO TECHNOLOGY
TO AMPLE LUXURY.**

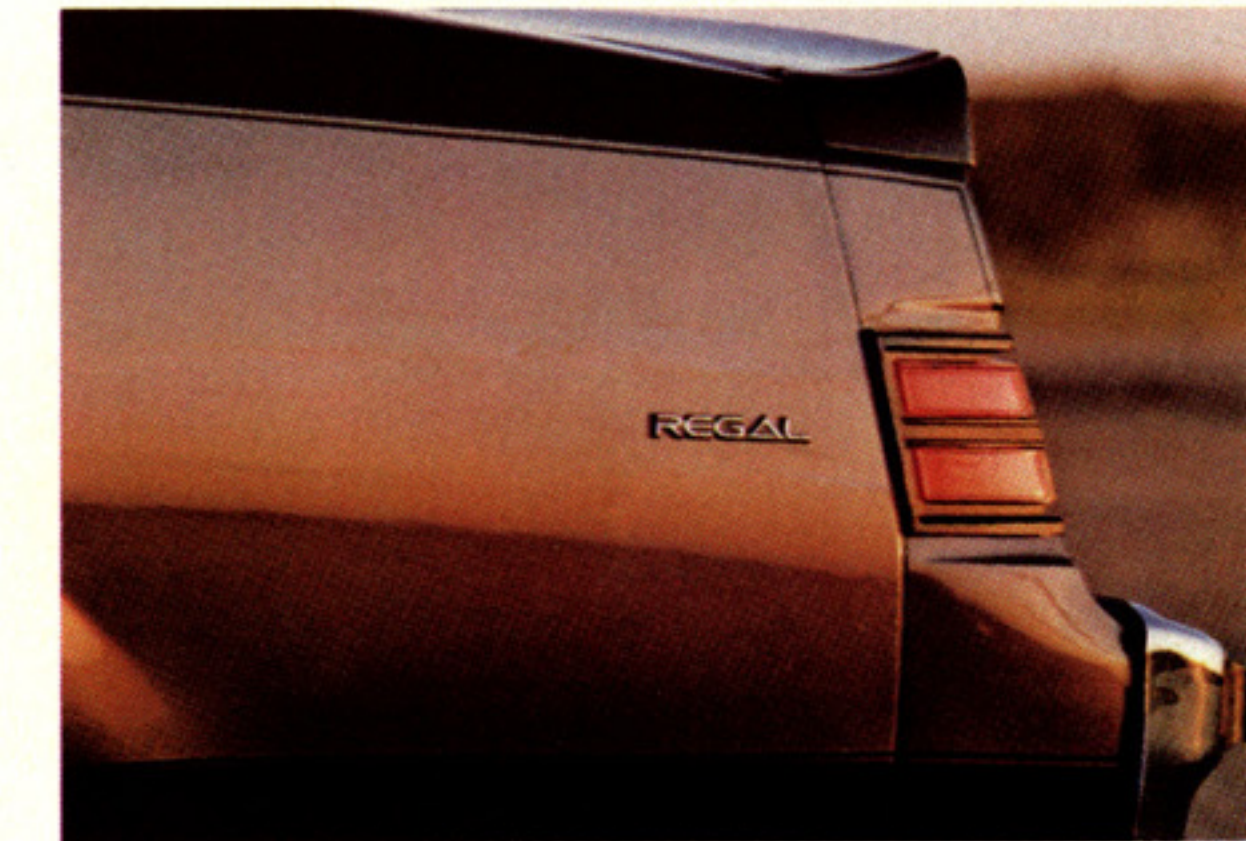


The Regal T TYPE's appearance alone inspires enthusiasm. From the standard, P215/65R15 Eagle GT tires and lightweight, cast-aluminum wheels to the standard L.E.D. tachometer and turbo boost gauge, its high-performance capabilities are obvious. This car is eager to perform. And perform it does.



The big news is under the hood. Start the engine and hear the growl of the turbocharged powerplant. This year's 3.8 litre turbo V-6 is one of the most advanced production engines available. Turbo-charging boosts horsepower an incredible 81% over the normally-aspirated version of the 3.8 litre V-6...to an impressive 200 hp. The turbo 3.8 is fed by sequential-port fuel

injection, developed exclusively for Buick by Bosch of Germany. This system injects fuel as it's required to each individual cylinder in incredibly precise amounts. The resulting performance is, in a word, blistering. The T TYPE's standard Grand Touring suspension—higher-rate springs, taut shock absorbers, rear stabilizer bar, and stiffer front stabilizer bar—provide the reinforced



underpinnings that allow you to treat the T TYPE like the driver's car it is.

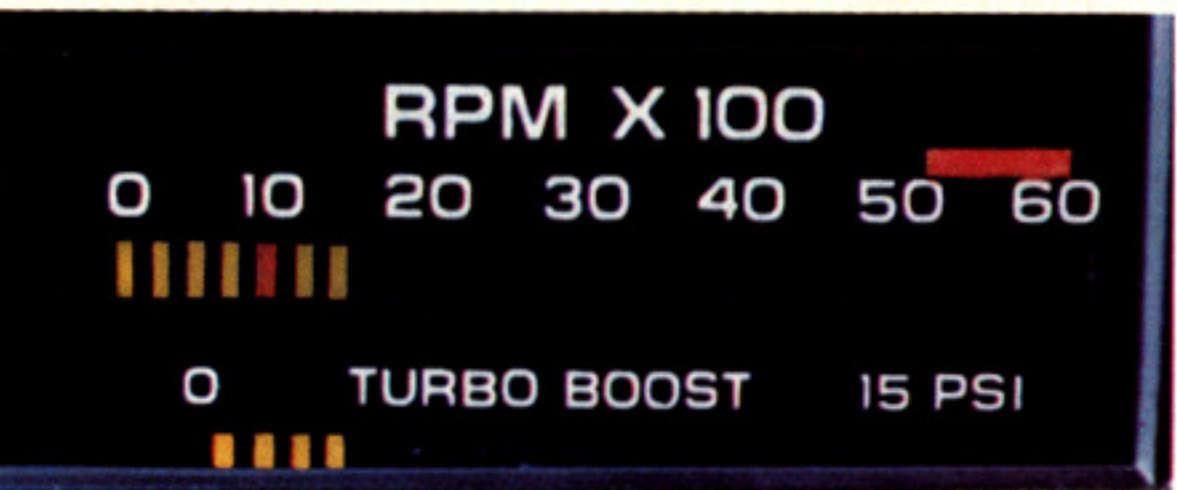
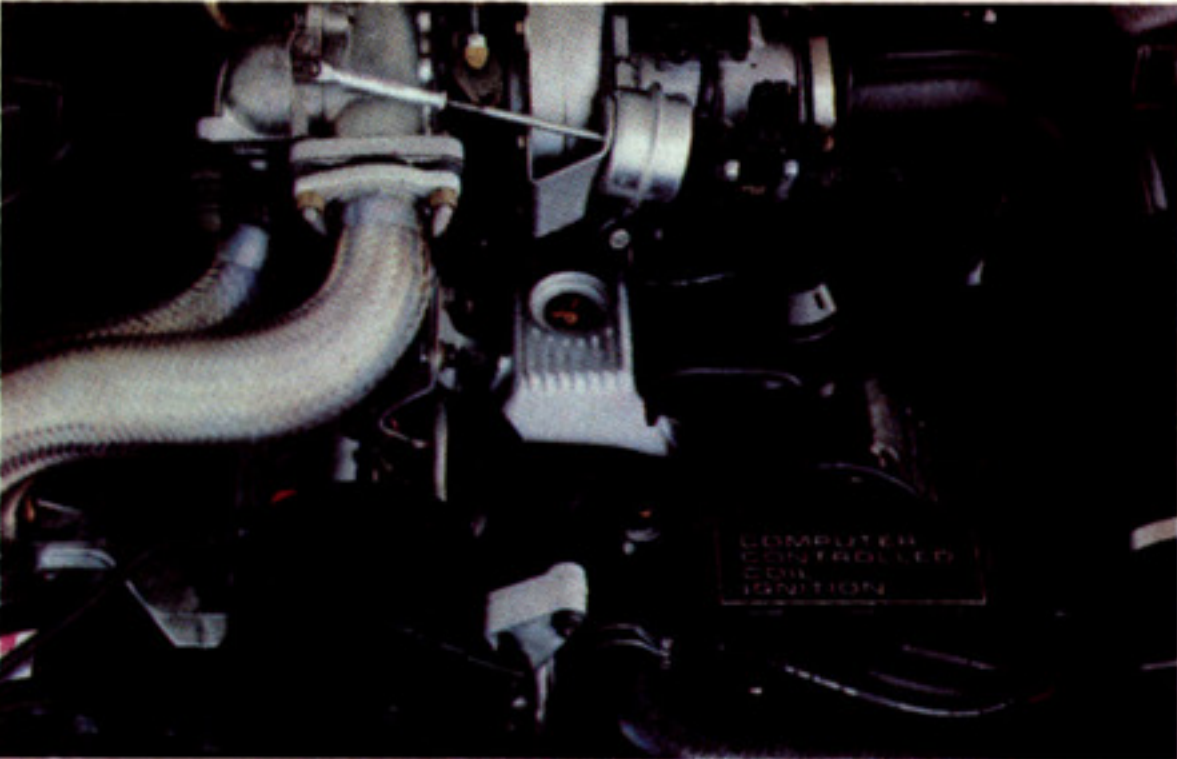
To further keep you in touch with this performance car, there's a standard turbo boost gauge, an L.E.D. tachometer, fast-ratio power steering, and an automatic transmission with overdrive and a 3.42:1 performance axle ratio. Mate these standard features with the optional performance-oriented, multi-adjustable Lear Siegler bucket seats (far left), which are color coordinated with the charcoal instrument panel, and the enthusiast in you may never want to get out of the car.

Whether you want performance or elegance, we're sure you'll be pleased with a Regal. Very pleased.

**BUICK REGAL INTERIORS.
SUITABLE FOR ROYALTY.**

The Regal's sumptuous interiors encourage you to settle in and relax. They were designed for comfort and luxury, and judging by appearances, they're monumentally successful. And here, looks aren't deceiving. Sit down, buckle in, and you'll feel as good as the seats look.

The Regal offers cloth or vinyl notchback



seats standard; 55/45 cloth notchback seats or cloth buckets on Coupes are available as options. The Regal Limited has 55/45 cloth notchback seats standard (below), but 45/45 leather-trimmed seats are available as an option.

And you can add to the luxury with a full choice of options. You may choose the manually-controlled air conditioning or Electronic Touch Climate Control, which features high-tech touch switches and blower-speed control. You may wish



to order one of the AM/FM ETR stereo radios available, all with four-speaker systems or add one with a cassette tape player (left centre).

The Turbo V6 (top left) of the T Type comes with tachometer and boost gauge (bottom left).

All Regals begin with luxury. Your choice of options will tailor the car's personality to your needs and wants.

Sporty, formal, or in between, a Regal will live up to your standards.

1984 REGAL FACTS & FIGURES

Select the combination of "extras" that make your Buick uniquely yours from the long list of standard and available features, some of which are given below. Ask your dealer about group packages and the many other features not indicated below. Your dealer will also advise you of the availability of the various items on the model of your choice.

	Regal	Regal T Type	Regal Limited
Engines—3.8 litre V6	S	—	S
3.8 litre V6 Turbo	—	S	—
4.3 litre V6 Diesel	A	—	A
5.0 litre V8	A	—	A
Computer Command Control	—	S	—
Transmissions—Automatic	S	—	S
Overdrive Automatic	A	S	A
Brakes—Power Front Disc/Rear Drum	S	S	S
Steering—Power	S	S	S
Tires—195/75R x 14 Radial (White)	S	—	S
205/70R x 14 Radial (White)	A	—	A
215/65R x 15 Radial (Black)	—	S	—
(white lettered)	—	A	—
Self-Sealing Tires	A	—	A
Firm Ride & Handling Suspension	A	—	A
Gran Touring Suspension	A	S	A
Cruise Control	A	A	A
Seats—55/45 Divided	A	A	S
45/45 Divided	—	—	A
Notchback	S	S	—
Bucket Reclining	A	A	—
Reclining Pass. Side Only	A	A	A
Tilt Steering	A	A	A
Moldings—Rocker	S	S	—
Wide Rocker	A	—	S
Bodyside	S	A	S
Power—Seats 6-way	A	A	A
Door Locks	A	A	A
Deck Release	A	A	A
Windows	A	A	A
Wheels—Deluxe Covers	S	—	S
Wire Covers	A	A	A
Chrome Wheels	A	A	A
Aluminum Wheels	A	S	A
Luggage Compartment Trim	A	A	A
Air Conditioning—Manual	A	S	A
Automatic	A	A	A
Rear Window Defroster	A	A	A
Roof—Full Vinyl (Sedan)	A	—	A
Landau (Coupe)	A	—	A
Sunroof (Coupe)	A	A	A
Hatchroof (Coupe)	A	A	A
Glass—Soft-Ray Tinted	A	A	A
Theft Deterrent System	A	A	A
Twilight Sentinel	A	A	A
Tungsten Halogen Headlamps	A	A	A
Gauge Package	A	S	A
Radio—AM	A	A	A
AM/FM	A	A	A
AM/FM Stereo	A	A	A
AM/FM Stereo/Cassette	A	A	A
Antenna—Power	A	A	A
Cornering Lamps	A	—	A
Head lamps-on Indicator	A	A	A
Visor Vanity Mirror	A	A	A
Two-tone Paint	A	A	A

S-Standard A-Available (extra cost) —Not Available

DIMENSIONS	COUPE		SEDAN	
	mm	in	mm	in
Wheelbase	2746	108.1	2746	108.1
Overall Length	5095	200.6	4978	196.0
Overall Width	1819	71.6	1805	71.1
Height	1405	55.3	1427	56.2
Tread, Front/Rear	1486/1466	58.5/57.7	1486/1466	58.5/57.7
Headroom, Front/Rear	962/967	37.9/38.1	978/960	38.5/37.8
Legroom, Front/Rear	1086/963	42.8/37.9	1086/963	42.8/37.9
Shoulder Room, Front/Rear	1442/1425	56.8/56.1	1457/1450	57.4/57.1
Hiproom, Front/Rear	1314/1394	51.7/54.9	1326/1412	52.2/55.6
Usable Luggage Cap.	485 litres	16.2 cu. ft.	442 litres	15.6 cu. ft.
Cargo Volume	—	—	—	—
Fuel Tank Cap.	68.5 litres	15.0 gal.	68.5 litres	15.0 gal.
Diesel	74.9 litres	16.5 gal.	74.9 litres	16.5 gal.

A word about engines

These Buicks are equipped with GM-built engines produced by various divisions and affiliates of General Motors Corporation and GM of Canada.

Order Code	Displacement	Carb. bbl.	Cyl.	V.I.N. *Source	Transmission
Engines available without Computer Command Control (Opt. NB1)					
LD5	3.8 litre (231 CID)	2	V6	A (1)	Automatic
LT6	4.3 litre (260 CID)	Diesel	V6	V (3)	Automatic O.D. Automatic
LG4	5.0 litre (305 CID)	4	V8	H (2) (4)	Automatic O.D. Automatic

Engines available with Computer Command Control (Opt. NB1)

LM9	3.8 litre (231 CID) Turbo	SFI	V6	3 (1)	O.D. Automatic
-----	---------------------------	-----	----	-------	----------------

*Produced by GM (1) Buick Division USA (2) Chevrolet Division USA (3) Oldsmobile Division USA (4) GM of Canada

†The V.I.N. (Vehicle Identification Number) Engine Code is the eighth entry (letter or numeral) from the left on the vehicle serial number plate. The vehicle serial number plate is located on the top portion of the driver's side of the instrument panel and can be viewed from the exterior of the car by looking through the windshield.

STANDARD FEATURES ON ALL BUICKS

SAFETY FEATURES

OCCUPANT PROTECTION • Manual lap/shoulder belts with pushbutton buckles for driver and right front passenger (driver side includes visual and audible warning system). Manual lap belt at centre position, when applicable • Manual lap belts with pushbutton buckles at rear passenger positions including centre, when applicable • Energy-absorbing steering column • Passenger-guard inside door lock handles • Safety interlocking door latches • Inertia-type folding front seat back latches • Energy-absorbing instrument panel and front seat back tops • Laminated safety glass windshield/tempered safety glass side and rear windows • Safety armrests • Front seat head restraint for driver and right front passenger (adjustable or integral) • Glove box door latch and, when applicable, console cover latch impact security • Smooth contoured door and window regulator handles • Pressure lock radiator cap.

ACCIDENT AVOIDANCE • Side marker lights and reflectors • Parking lamps that illuminate with headlamps • Four-way hazard warning flasher • Backup lights • Lane change feature in direction signal control • Windshield defrosters, washer and dual speed wipers • Vinyl-bonded inside rearview mirror glass • Outside left rearview mirror • Dual master cylinder brake system with warning light • Starter safety switch • Dual action safety hood latch • Low glare finish on instrument panel top, inside windshield mouldings, wiper arms and blades, and steering wheel metallic surfaces • Safety road wheel rims • Front disc brakes with audible wear indicators • Self-adjusting brakes • Illumination of heater and defroster controls on instrument panel • Illumination of windshield wiper and washer controls (when located on instrument panel) • Pressure relief fuel cap • Tread-wear indicators on tires.

ANTI-THEFT • Audible anti-theft ignition key reminder • Anti-theft steering column lock • Inside hood release • Anti-theft key system (one key for ignition only, second key for doors, trunk/hatch/taillgate and glove compartment) • Visible vehicle identification number.

MODEL LINEUP

Regal—2-Door Coupe/4-Door Sedan

Regal T Type—2-Door Coupe

Regal Limited—2-Door Coupe/4-Door Sedan

A word about assembly, components, and optional equipment in these vehicles.

The vehicles described in this brochure are assembled at various Divisions of General Motors Corporation. These vehicles incorporate thousands of different components produced by General Motors of Canada Limited and related companies and their suppliers. From time to time during the manufacturing process, it may be necessary, in order to meet public demand for particular vehicles or equipment, or to meet federally mandated emission and safety requirements or fuel economy guidelines, or for other reasons, to produce vehicles with different components or differently sourced components than initially scheduled. All such components have been approved for use in our products by General Motors of Canada Limited or related companies and will provide the quality performance associated with our name.

Please note that certain optional equipment can be ordered only in conjunction with other optional equipment.

Also, upgrading from specified standard equipment may be necessary when certain optional equipment is ordered. Ask your sales representatives for details.

With respect to extra cost optional equipment, make certain you specify the type of equipment you desire on your vehicle when ordering it from your dealer. Some options may be unavailable when your car is built. Your dealer receives advice regarding current availability of options. You may ask the dealer for this information. GM also requests the dealer to advise you if an option you ordered is unavailable. We suggest you verify that your car includes the optional equipment you ordered or, if there are changes, that they are acceptable to you.

All illustrations and specifications contained in this catalogue are based on the latest product information available at time of publication approval. The right is reserved to make changes at any time, without notice, in prices, colours, materials, equipment, specifications and models, and to discontinue models. Some of the equipment shown or described throughout this catalogue is available at extra cost. Check with your dealer for complete information.

BUICK
Wouldn't you really rather have a Buick?

Look at GM today.

A lot of new thinking has gone into GM products. New thinking aimed at completely satisfying you.

Our products are designed to slip through the wind with energy saving ease.

Optic scanners and robotics are used to build a new kind of precision.

From foundry to assembly, our people use lasers and gamma rays to monitor the building process.

At GM, we are determined that when you buy our

product, you'll be more satisfied than the buyer of any other vehicle, built by any other manufacturer anywhere in the world.

Today, we are making history in aerodynamic design, quiet rides, fuel economy and more. Leaf through this catalogue and you'll see what we mean.

At GM, our products are changing. So is our thinking. Look at GM today.



If the idea of a Buick impresses you as being a notch or two above the average automobile, it's because the people responsible for creating Buicks know that they have some high standards to maintain.

At first, it was simply a matter of excelling. Of Buick people pleasing themselves by building the very best cars they were capable of building. Cars which were luxurious, comfortable, and prestigious.

It didn't take North Americans long to discover that all the things they wanted in a car they could find in a Buick, in abundance. And so a tradition was born. A tradition of not merely meeting expectations, but surpassing them year after year.

For the past 80 years, we've been working to

advance those standards by which new Buicks are judged. Recently, that has meant employing large amounts of the latest, most advanced technology: computers, lasers, robotics, electronics. Not to replace the human factor, mind you, but to assist our people in raising Buick's standards to even higher levels.

Front-wheel drive, turbochargers, computerized multi-port fuel injection, mass-flow sensors, aerodynamics, electronics...you'll find the 1984 Buicks at the forefront of them all. We think that you'll also be pleased to discover that the traditional values of luxury, comfort, and prestige are as apparent and as important as ever. Without them, a Buick just wouldn't be a Buick.

FOR YOUR PROTECTION

New Vehicle Limited Warranty—This warranty covers any repairs needed during the basic coverage period due to defects in material or workmanship. Any required adjustments will also be made during the basic coverage period of 12 months or 20,000 kilometres, whichever comes first. The complete vehicle, except tires, is covered during this period.

Powertrain Coverage—This powertrain warranty covers gasoline engine and other powertrain components up to a total of 24 months or 40,000 kilometres, whichever comes first. This powertrain warranty also covers specific diesel engine components to 36 months or 80,000 kilometres, whichever comes first. All powertrain warranty repairs are subject to a \$100 deductible for each repair visit.

Corrosion (Rust-Through) Coverage—General Motors warrants for 1984 passenger cars, light duty trucks and vans that your General Motors dealer will repair or replace at no charge any body sheet metal panel found to have developed perforation (rust-through) due to corrosion. This warranty begins on the date the vehicle is first delivered or put in use and extends for 36 months, regardless of distance travelled by the vehicle.

Battery Coverage—If your battery should fail under normal service due to a defect in material or workmanship after the basic coverage period expires, but before the vehicle has been in use 36 months, it can be replaced on a pro rata adjustment basis for a new Delco battery. The pro rata adjustment price of the new battery will be based on the number of months the original battery was in use since the start of the new vehicle warranty. Contact a dealer handling your vehicle for further details on such adjustments.

Tires are warranted by the tire manufacturer.

Owner Assistance—The satisfaction and goodwill of owners are of primary concern to GM dealers and General Motors of Canada Limited. In the event a warranty of some other matter is not handled to your satisfaction, the following steps should be taken:

1. Discuss the problem with your dealership management.
2. Contact the General Motors Zone Office closest to you as listed in the Owner Assistance Section of your Owner's Manual.
3. Contact the Customer Service Representative, General Motors of Canada Limited, Oshawa, Ontario.

Special Policy Adjustment Program Beyond the Warranty Period—General Motors is proud of the protection afforded by its warranty coverages. In order to achieve maximum customer satisfaction, there may be times when General Motors will pay all or part of the cost of certain repairs beyond the terms of the warranty. Check with your General Motors dealer or the nearest G.M. Zone Office regarding General Motors participation in the cost of such repairs.


Continuous Protection Plan



Continuous Protection Plan—While there are many service contracts available on the market today, there is only one which gives you an agreement

directly with General Motors. It is the one with the Continuous Protection Plan logo shown. This logo on all Plan material assures you that the service contract you are buying is the GM Plan, the finest such program available to GM owners.

The GM Continuous Protection Plan provides optional added mechanical and electrical repair protection during and after the new vehicle limited warranties. Ask your General Motors dealer for details and information about the genuine GM Continuous Protection Plan.

Let's get it together 

Buckle up!

DIESEL
WORLD LEADERS IN
DIESEL POWER.

Printed in Canada GM-4479

GM 75
BUILDING ON 75 YEARS OF EXCELLENCE