

RIVIERA

BUICK 1986



BUICK RIVIERA

From the beginning, more than 20 years ago, the Riviera has lived in that special class reserved for extraordinary automobiles. The 1986 Riviera is the most technologically advanced Riviera ever offered, it is one of the most technologically advanced production cars available anywhere. Period.

Several years ago designers and engineers were handed a blank piece of paper and this assignment: create a car that is every bit as elegant and luxurious as the famous Riviera name demands, but is, at the same time, light and quick and responsive to the driver in every way; a car that has remarkable handling capabilities. A car for today. And tomorrow.

This new car would take advantage of the very latest developments in high-performance, fuel-efficient engines and front-wheel-drive technology. It would be equipped with all the comfort and convenience features the owner of the finest personal luxury car expects. And to make what is exceptional even more so, there would be an electronic communications link between this remarkable new car and its driver that had never before been possible.

The 1986 Riviera (next page) and Riviera T Type (right) show just how thoroughly that assignment has been carried out. It is all those things and, as you will learn, much more.

The T Type is truly a special Riviera for a special kind of driver. A driver who seeks the kind of handling only a specially tuned suspension system can provide. A driver who knows the value of a bucket seat that grips and supports. A driver who appreciates subtle colour schemes and likes the feel of real leather wrapped around a steering wheel and shift lever. A driver who makes demands and expects his car to comply.

It is no secret that some of the finest cars of Europe, those kings of the Autobahns and masters of the Alpine passes, were very much in mind when the Riviera T Type was being formulated. The engineers studied those cars, admired them and then turned to the Riviera.



The dramatic results are evident after a few miles behind that leather-wrapped wheel. The T Type is taut, firm, precise; it is instantly responsive to driver inputs, eager to please. It is, to borrow an expression from the computer world, user-friendly.

Credit for the impeccable road manners goes to the T Type's responsive rack-and-pinion steering, the standard four-wheel power disc brakes and the special Gran Touring suspension that includes stiffer spring and shock rates and larger anti-roll bars. Riding on standard P215 60R15 Eagle GT blackwall radials and wide, 15-inch aluminum wheels, the T Type has recorded remarkable cornering performance figures at the GM Proving Ground.

And, to complete the package, there's a gray-accented paint treatment and Power Comfort bucket seats. The Riviera T Type isn't for everyone; but if you're ready to explore a new world of driving experiences that challenge as well as excite, it's definitely for you.



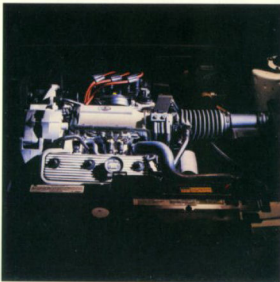
The new Riviera is almost 500 mm (20 in.) shorter than its predecessor, and yet headroom and legroom are similar to 1985. Shoulder and hip room are increased. It is 225 kg (500 lbs.) lighter and rides on a completely new, all-independent suspension system that features modified MacPherson struts in front and a single, reinforced fiberglass, transverse-leaf spring at the rear. Working in tandem with four high-performance steel-belted radial-ply all season tires, the new suspension gives Riviera a sure-footed grip on the road.

A new 3.8-litre V-6 engine with sequential-port fuel injection produces 142 horsepower and drives the front wheels through a computer-controlled four-speed automatic transmission with overdrive. Send a message with your right foot and the Riviera responds immediately.

But there is another side to Riviera's personality. This is a high-performance grand touring machine, yes. But Riviera accomplishes that mission without sacrificing luxury or comfort. The appointments are exquisite, the ride smooth, silent, unobtrusive. Characteristics which are typically not found in a car with this kind of serious performance potential and this kind of tenacious road-holding ability.

And of course there are comfort and convenience features that reflect Riviera's status as a personal luxury car. Electronic digital instrumentation, including the Graphic Control Center; power driver seat; Electronic Cruise Control; power windows, steering and 4-wheel disc brakes; extendible tinted sunshades in the sun visors; automatic level control that keeps the Riviera at the proper ride height, regardless of load; Electronic Touch Climate Control System; available electronically tuned Delco-GM/Bose stereo Music System; optional Keyless Entry System, available after January, 1986. And more.

The 1986 Riviera is the steel and glass and leather reality of a new philosophy about personal luxury cars. A new look, a new technical elegance and, as you'll know when you try it, a new and gratifying driving experience.





RIVIERA INTERIOR

Contemporary influence is apparent the moment you open the door. The interior of the new Riviera is a study in tailored elegance. A sensory experience. Muted tones, an absence of brightwork, handsome and functional bucket seats. Feel how the bucket seats surround you gently but firmly, and how the seat height and steering-wheel angle have been carefully matched for comfort and control. And notice how the most-used switches, the door handles, the power-window controls and, of course, the Graphic Control Center have been positioned.

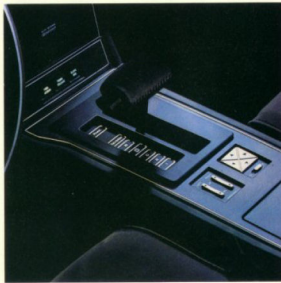
Engineers carefully studied even the most minute driver requirements to create an environment of comfort and efficiency.

The standard buckets in the Riviera Coupe (left) are cloth covered, with leather and suede available. The Power Comfort Seats in the T Type trim are upholstered in leather and suede with leather and cloth center sections in the seating area that reverse as your tastes dictate. The floor is covered with a new two-layer carpet-insulation separate from carpeting—which ensures a tailored fit and a reduction in road noise.

We keep looking for another word to describe the available Delco-GM/Bose Music System, but keep coming back to "remarkable." This system is acoustically matched to the Riviera's interior. The sound, whether from the electronically tuned AM/FM-stereo radio or the cassette tape player, is rich and true.

The center console (left) is convenience central. It incorporates an armrest, a storage compartment, the power-window switches, available cassette tape player and removable tape storage tray, lighter and ashtray, controls for the electric-controlled outside rearview mirrors and release switches for the glove box, fuel-filler door and trunk.

The Riviera's interior is many things. It is a delight to the driver who appreciates understated luxury. It is comfortable, and it is quiet. But most importantly, it is a perfectly designed driver's workplace.



THE POWER COMFORT SEAT

All too often a car leaves a feeling of "almost, but not quite," where reality doesn't live up to expectation.

We know just how high expectations can be when a car carries the Riviera name, and we considered those expectations a challenge that had to be met. It was. The 1986 Riviera is everything it is expected to be. And considerably more.

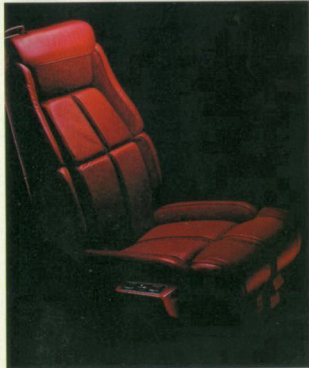
Nothing is more important than the seat in establishing the desired relationship between a car and its driver, and the bucket seats in the Riviera have been carefully designed with that relationship in mind. They are comfortable, richly appointed, and yet firm enough to offer orthopedic support. The Riviera T Type, with its more aggressive approach to the road, takes that philosophy even farther.

Three years ago a design team, assisted by two professors from a major university, began work on a unique seat. With almost infinite adjustments and a newly developed "membrane" suspension system, this seat gives the Riviera T Type driver and front passenger better orthopedic support than found in a conventional bucket seat.

Slide behind the T Type's leather-covered steering wheel and nestle into the bucket. The center section of the seat is reversible: cloth on one side, leather trimmed with suede on the other. Switches on the door armrest control back-and-forth, tilt and up-and-down adjustments. And, in a pod on the side of the seat cushion, are more controls. The cushion supporting your thighs moves forward and backward at a touch. The "wings" on the seat cushion can be folded snugly against your upper thighs to hold you firmly in place.

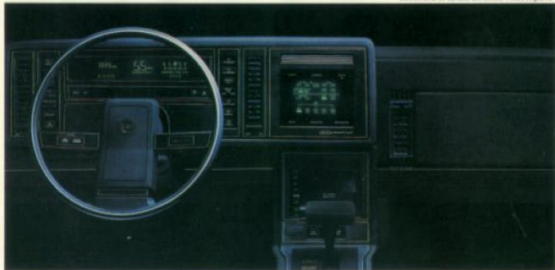
There's more: an inflatable lumbar support, an electrically adjustable headrest, and a unique double pivoting system that keeps the lower portion of the seatback from protruding into the occupant's back as it is reclined.

Like the T Type itself, the Power Comfort seat is a new driving experience.





Instruments in Canada are metric where required.



THE GRAPHIC CONTROL CENTER

The Graphic Control Center (GCC) creates a communication between car and driver that had never been possible before. Its touch-sensitive cathode ray tube provides the driver with more important information and control over more functions than any single instrument or group of instruments ever installed in a Buick. In fact, it would take nearly 100 switches to do the work of this one screen.

Touching the edge of the screen calls up major functions displayed as illustrations. Touching images on the screen controls the air conditioning, an eight-function trip monitor and the AM-FM sound system. Your touch calls up diagnostics information, a gauge display or a summary of several key functions. An available electronic digital instrumentation (left) presents vital information instantly and understandably.

By all the traditional criteria, the Riviera is definitely a driver's car. A few minutes behind the wheel will confirm that.



1986 RIVIERA FACTS & FIGURES



DIMENSIONS

	mm	COUPE	in
Wheelbase	2742		108.0
Overall Length	4755		187.2
Overall Width	1822		71.7
Height	1359		53.5
Tread, Front/Rear	1522/1522		59.9/59.9
Headroom, Front/Rear	960/960		37.8/37.8
Legroom, Front/Rear	1085/906		42.7/35.7
Shoulder Room, Front/Rear	1470/1458		57.9/57.3
Hiproom, Front/Rear	1419/1407		55.9/55.4
Usable Luggage Cap.	38.8 litres		13.7 cu. ft.
Fuel Tank Cap.	68 litres		15 gal.

STANDARD FEATURES ON ALL BUICKS

SAFETY FEATURES

OCCUPANT PROTECTION • Manual lap/shoulder belts for driver and right front passenger (driver side includes visual and audible warning system) • Manual lap belts at each rear seat position, (and centre front, when applicable) • Energy absorbing steering column • Energy absorbing instrument panel • Energy absorbing front seatback tops • Laminated safety windshield glass and tempered safety side and rear window glass • Safety interlocking door latches • Passenger-guard inside door lock handles • Inertia-locking, folding front seat backs • Safety armrests • Head restraints, driver and right front pass. (adjustable/integral) • Dual sun visors • Smooth contoured door and window regulator handles • Pressure lock radiator cap.

ACCIDENT AVOIDANCE • Side marker lights and reflectors • Parking lamps that illuminate with headlights • Four-way hazard warning flasher • Back-up lights • High-mounted stop lamps • Directional signal control (and lane change feature) • Windshield defroster, washer and dual speed wipers • Inside rearview mirror with vinyl-bonded glass • Outside left rearview mirror • Brake system with dual master cylinder and warning light • Starter safety switch • Dual action hood latch system (except rear opening Electra and LeSabre) • Low glare finish on instrument panel top, inside windshield mouldings, wiper arms/blades, metallic steering wheel surfaces • Illuminated heater and defroster controls • Illuminated

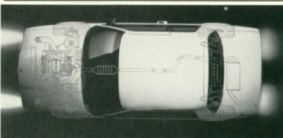
MODEL LINEUP

Riviera—2-Door Coupe,

Riviera T Type—2-Door Coupe

windshield wiper and washer controls (if on I/P) • Tires with built-in tread-wear indicators • Safety road wheel rims • Audible brake lining wear indicators, all disc brakes • Self-adjusting brake feature • Pressure relief fuel cap.

THEFT DETERRENCE • Audible reminder for ignition key removal • Theft deterrent steering column lock • Visible vehicle identification number • Remote inside hood release • Theft deterrent key system (separate key for ignition).



A word about engines

These Buicks are equipped with GM-built engines produced by various divisions and affiliates of General Motors Corporation and GM of Canada.

Order Code	Displacement	Cyl. bbl.	Cyl.	†V.I.N.	*Source	Transmission
LG2	3.8 litre (231 CID)	SFI	V6	3	(1)	O.D. Automatic

*Produced by GM (1)Buick Division USA

†The V.I.N. (Vehicle Identification Number) Engine Code is the eighth entry (letter or numeral) from the left on the vehicle serial number plate. The vehicle serial number plate is located on the top portion of the driver's side of the instrument panel and can be viewed from the exterior of the car by looking through the windshield.

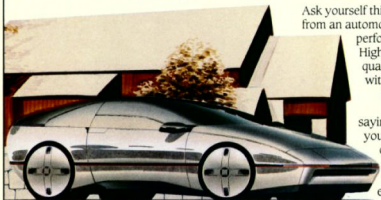
Select the combination of "extras" that make your Buick uniquely yours from the long list of standard and available features, some of which are given below. Ask your dealer about group packages and the many other features not indicated below. Your dealer will also advise you of the availability of the various items on the model of your choice.

	Riviera Coupe	Riviera T Type
Engine—3.8 litre/V6	S	S
Transmission—Overdrive Automatic	S	S
Brakes—Power 4-Wheel Disc	S	S
Steering—Power	S	S
Tires—P205/70R x 14 Radial (white)	S	—
P215/60R x 15 Blackwall	A	S
P215/60R x 15 Radial (white)	A	A
Gran Touring Suspension	A	S
Performance Package	A	S
Stabilizer Bar—Front	S	S
Cruise Control	A	S
Seats—Reclining Bucket	S	S
Power Comfort	A	S
Steering Wheel—Sport, leather wrapped	A	S
Graphic Control Centre	S	S
Indicator Package, electronic	A	A
Tilt Steering	S	S
Mouldings—Rockers	S	S
Wheel Opening	S	S
Window Sill	S	S
Roof Grip	S	S
Door Edge	A	A
Body Side	A	S
Power—Seat, Driver, 6-way	S	S
Door Locks	S	S
Deck Release	S	S
Windows	S	S
Fuel Fill Door	S	S
Glove Box Release	S	S
Dual Mirrors	S	S
Wheels—Deluxe Covers	S	—
Aluminum Wheels	A	—
Wire Covers	A	—
Stripes—Accent	A	S
Air Conditioning—Automatic	S	S
Rear Window Defroster	S	S
Sunroof, Power, Sliding	A	A
Glass—Soft-Ray Tinted	S	S
Compact Spare	S	S
High Energy Ignition	S	S
Cigarette Lighter	S	S
Dual Horns	S	S
Controlled-Cycle Wipers	S	S
Theft Deterrent System	A	A
Twilight Sentinel	A	A
Paint—Two-tone	A	—
Firemist	A	A
Tungsten Halogen Headlamps	S	S
Clock—Digital	S	S
Radio—AM/FM Stereo	A	A
AM Stereo/FM Stereo Cassette	A	A
Concert Sound Speakers	A	A
Antenna—Power	S	S
Bumper Guards	S	S

S—Standard A—Available (extra cost) —Not Available

Printed in Canada GM-4789

BUICK. ARTISTRY AND TECHNOLOGY IN HARMONY.



Ask yourself this question: "What do I really want from an automobile?" Do you want luxury? High performance? Economy? Space? Beauty? High technology? Do you want *all* these qualities? Chances are, if you're honest with yourself, you do.

Most drivers want *all* those things.

At Buick, honesty prevents us from saying to you, "Here are *all* the things you've ever wanted in a car." We can't deliver on that promise. No one can.

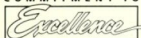
But what we can do is offer you a choice of finely crafted and engineered automobiles; invite you

to select from a full line of cars, each one of which is intended to satisfy a particular set of driver wants and needs.

The task of designing and building better Buicks is a job with no outer limits. A constant seeking of balance: comfort with agility, practicality with luxury, durability with style. And always, Buick's tradition of balancing artistry with technology.

This balance, and the constant search for it by dedicated engineers and designers, appears in every Buick built. It is a Buick component in which we take considerable pride, the ingredient that sets the cars on these pages apart. The quality that makes a Buick a Buick.

COMMITMENT TO



General Motors recognizes that taking delivery of your new vehicle is a significant event. To

ensure that your delivery experience contributes to your overall satisfaction, we have implemented a "Commitment to Excellence" Delivery Procedure.

This procedure includes a thorough new vehicle inspection by both the service technician and salesperson, a full tank of fuel, and a follow-up survey to determine your satisfaction with the delivery experience.

General Motors "Commitment to Excellence" is yet another excellent reason to "Look at GM Today."



Protection Plan

While there are many service contracts available on the market today, *there is only one which gives you*

an agreement directly with General Motors. It is the one with the GM Protection Plan logo shown above. This logo on all Plan material assures you that the service contract you are buying is the GM Plan, we believe the finest such program available to GM owners.

The GM Protection Plan provides additional protection during and after the new vehicle limited warranties. Ask your General Motors dealer for details and information about the *genuine GM Protection Plan.*



5-year unlimited kilometres corrosion perforation warranty. On all 1986 GM passenger cars. Ask your dealer for details.

FOR YOUR PROTECTION*

1. New Vehicle Limited Warranty – 12 months or 20,000 kilometres, whichever comes first.
2. Major Assembly Coverage (1st Purchaser)—after expiration of basic coverage up to a total of 36 months or 60,000 kilometres whichever comes first on gasoline engine, transaxle, front-wheel drive, engine cooling and fuel, steering, front suspension, brakes, factory-installed air conditioner, electrical, electronic instrument cluster† (\$100 deductible). 2nd Purchaser \$25 transfer fee required for unexpired portion of coverage.
3. Owner Assistance Program.
4. Special Policy Adjustment Program.

*Ask your dealer for details.

†Deductible does not apply.

A WORD ABOUT THIS CATALOGUE

The vehicles described in this catalogue incorporate components produced by General Motors of Canada Limited and related companies and suppliers. During manufacturing, different components than initially scheduled may be used.

All illustrations and specifications contained in this catalogue are based on the latest product information at time of publication approval. The right is reserved to make changes at any time, without notice, in prices, colours, materials, equipment, specifications and models, and to discontinue models. Some of the equipment shown or described throughout this catalogue is available at extra cost or can only be ordered in conjunction with the other optional equipment. Some options may not be available when your vehicle is built. Check your dealer for complete information.



Official Supplier
to The 1986
World Exposition

