

1991

FORD TAURUS SHO

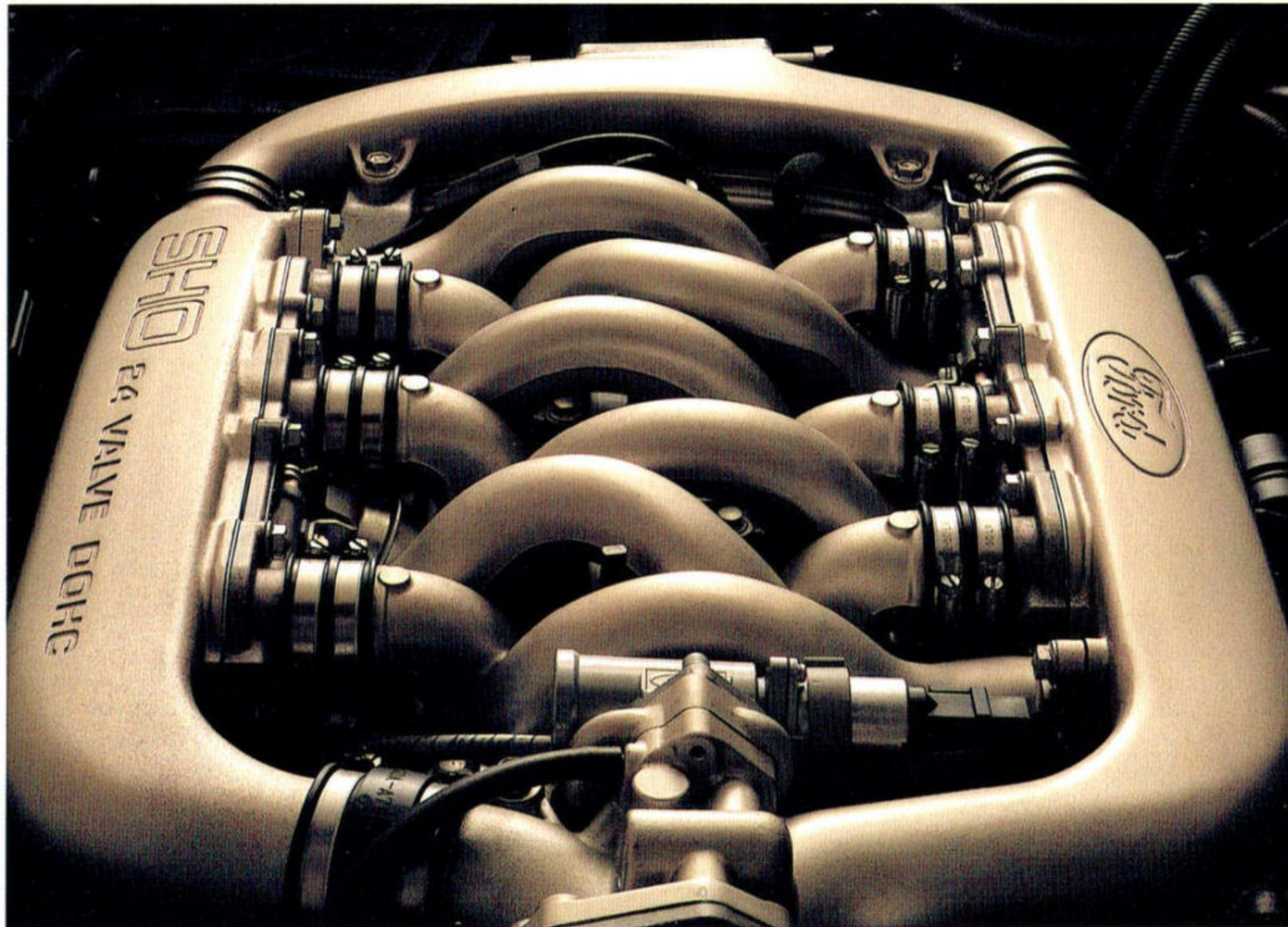




SHO interior with bucket seats in Mocha. Among SHO's many other standard features is a diagnostic instrument cluster with 8000-rpm tachometer. Some equipment shown, such as the leather seating surfaces, is optional.

TAURUS SHO

The visual beauty of the 24-valve SHO V-6 is its dual plenum chamber design with 12 runners. Below 4000 rpm, air is taken in through six long small-diameter runners that are tuned for low-rpm breathing. Above 4000 rpm, where the engine needs more air, butterfly valves open to allow added air intake through six short large-diameter runners.



There are a lot of sedans out on the road sporting fog lamps and spoilers and fancy wheels. And that's where the excitement begins and ends. Then there's the Ford Taurus SHO, a 4-door sedan a world apart from the ordinary.

Consider its sophisticated engineering: A sequential multi-port EFI, dual overhead-cam 3.0L SHO (Super High Output) 24-valve V-6, teamed with a precise and smooth-shifting 5-speed manual transaxle. A special 4-wheel independent handling

suspension. Goodyear Eagle GT+4 all-season performance radials. And 4-wheel power disc brakes with anti-lock system.

Such rare engineering credentials qualify Taurus SHO as a true world-class luxury sport sedan.

To make the comfort and convenience side of the luxury/sport equation as impressive as the performance side, we have created a special 5-passenger interior that in every way befits Taurus SHO's sophisticated power and handling.

The reclining bucket seats with console are upholstered in cloth and leather and are equipped with 6-way power adjustment plus adjustable lumbar and side bolster supports.

Luxurious and comfortable seating, however, is just the first item on SHO's long list of appointments.

The steering wheel is wrapped in leather. Carpeting is a plush 18-oz. cut-pile. Speed control is standard, too. So are power windows and locks, remote-control fuel filler door and trunk lid releases, diagnostic instrument cluster, courtesy light group, dual illuminated visor mirrors with secondary side visors, rear window defroster, and front cornering lamps.

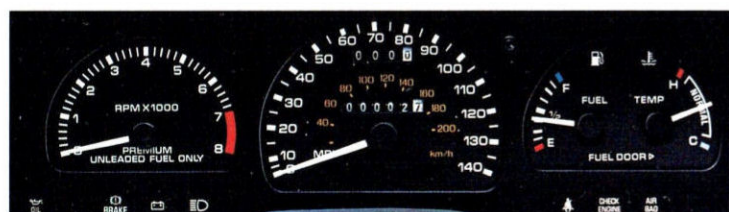
The SHO Preferred Equipment Package brings even more luxury-level comfort by way of the electronic climate-control air conditioning system. And convenience, too, with the autolamp, illuminated entry and keyless entry systems.

The High-Level Audio System is included as well, to which you can add the outstanding quality and performance of the optional Ford JBL Audio System. An audio digital disc player is also available.

The Ford Taurus SHO. Who says you have to travel to Europe to get a luxury sport sedan possessing true world-class performance and comfort?



Taurus SHO in Oxford White, with fog lamps, aerodynamic ground effects, and new 16" Goodyear Eagle GT+4 tires on unique cast aluminum wheels. Designed for SHO, these "V" speed-rated directional radials combine high-performance handling with all-season traction.



SHO interior with bucket seats in Mocha. Among SHO's many other standard features is a diagnostic instrument cluster with 8000-rpm tachometer. Some equipment shown, such as the leather seating surfaces, is optional.

Taurus SHO with the new Plus Package takes you to greater heights of SHO luxury-sport driving enjoyment. The package includes a rear deck lid spoiler, black rearview mirrors and black-out center pillar treatment. Order your SHO Plus in Oxford White and get white-painted cast aluminum wheels (or sparkle paint treatment if you prefer). Power moonroof and the Ford JBL sound system are also included. For availability of this special SHO model, see your Ford Dealer.



OPTIONS AVAILABILITY
Options shown or described in this catalog are available at extra cost and may be offered only in combination with other options or subject to additional ordering requirements or limitations.

PRODUCT CHANGES
Ford Division reserves the right to change product specifications at any time without incurring obligations.

"ASK YOUR FORD DEALER"
Following publication of this catalog, certain changes in standard equipment, options, prices and the like, or product delays, may have occurred which would not be included in these pages. Your Ford Dealer is your best source for up-to-date information.



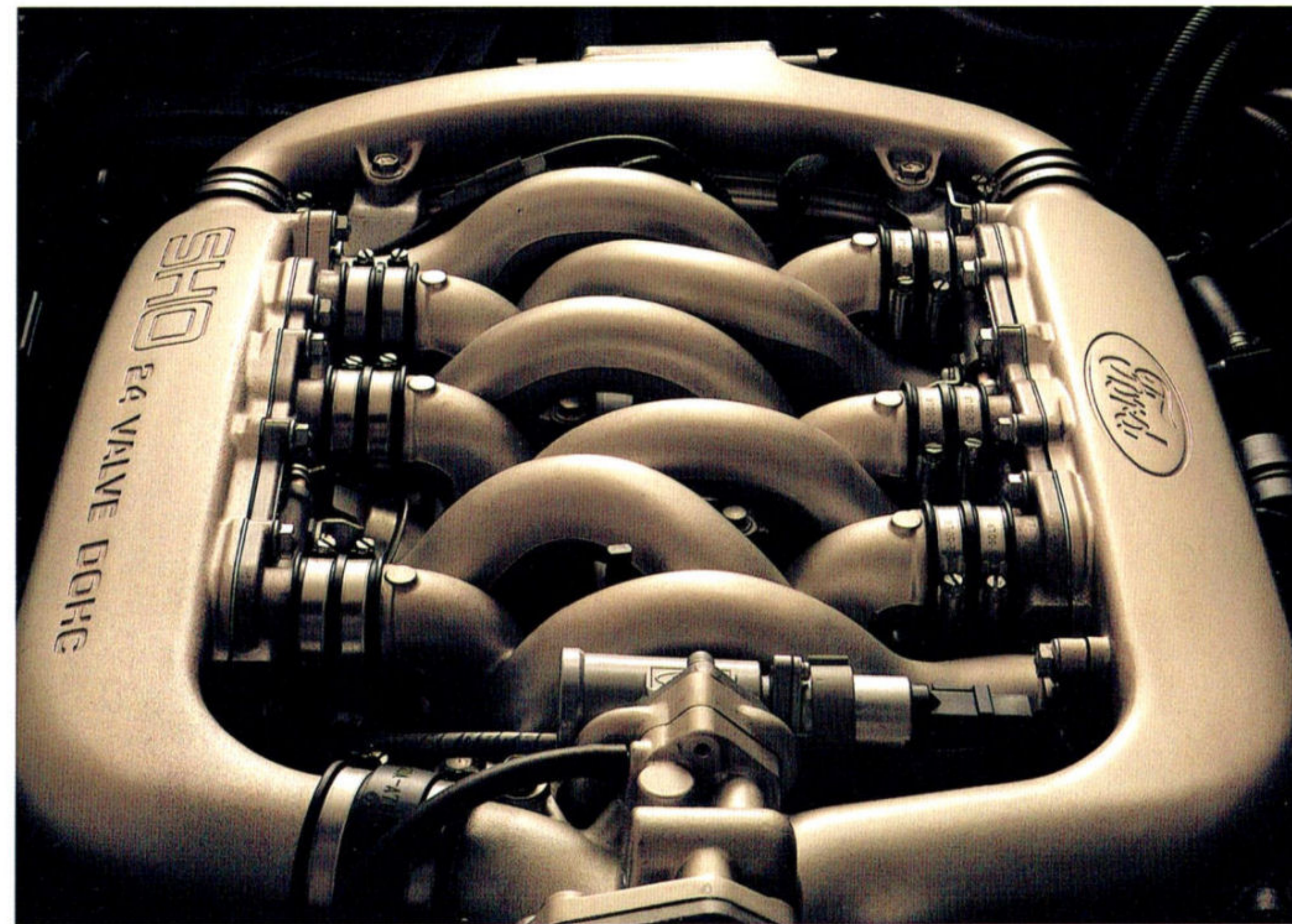
SPECIFICATIONS	
Drivetrain	Front-wheel drive
Engine type	3.0L DOHC 24-valve V-6
Induction system	Sequential multi-port electronic fuel injection
Compression ratio	9.8
Engine controls	Electronic Engine Control (EEC-IV) computer
Exhaust system	Dual
Horsepower, SAE net	220 @ 6200 rpm
Torque, SAE net	200 lb.-ft. @ 4800 rpm
Transaxle	5-speed manual overdrive Gear ratios: 3.21:1 (1st), 2.09:1 (2nd), 1.38:1 (3rd), 1.02:1 (4th), 1.02:1 (5th), 3.14:1 (reverse) Transfer ratios: 3.74:1 (1st thru 4th gears and reverse), 2.73:1 (5th gear)
Front/rear suspension system	Independent MacPherson type with performance handling components including higher-rate strut valving, stiffer suspension bushings, and larger stabilizer bars (.94"—front, 1.05"—rear)
Steering	Power rack-and-pinion, 15.2:1 ratio
Brakes	Power 4-wheel discs with anti-lock brake system
Tires	Goodyear Eagle GT-4 all-season high-performance, P215/60R16 94V

1991
FORD TAURUS SHO



TAURUS SHO

The visual beauty of the 24-valve SHO V-6 is its dual plenum chamber design with 12 runners. Below 4000 rpm, air is taken in through six long small-diameter runners that are tuned for low-rpm breathing. Above 4000 rpm, where the engine needs more air, butterfly valves open to allow added air intake through six short large-diameter runners.



There are a lot of sedans out on the road sporting fog lamps and spoilers and fancy wheels. And that's where the excitement begins and ends. Then there's the Ford Taurus SHO, a 4-door sedan a world apart from the ordinary.

Consider its sophisticated engineering: A sequential multi-port EFI, dual overhead-cam 3.0L SHO (Super High Output) 24-valve V-6, teamed with a precise and smooth-shifting 5-speed manual transaxle. A special 4-wheel independent handling

suspension. Goodyear Eagle GT+4 all-season performance radials. And 4-wheel power disc brakes with anti-lock system.

Such rare engineering credentials qualify Taurus SHO as a true world-class luxury sport sedan.

To make the comfort and convenience side of the luxury/sport equation as impressive as the performance side, we have created a special 5-passenger interior that in every way befits Taurus SHO's sophisticated power and handling.

The reclining bucket seats with console are upholstered in cloth and leather and are equipped with 6-way power adjustment plus adjustable lumbar and side bolster supports.

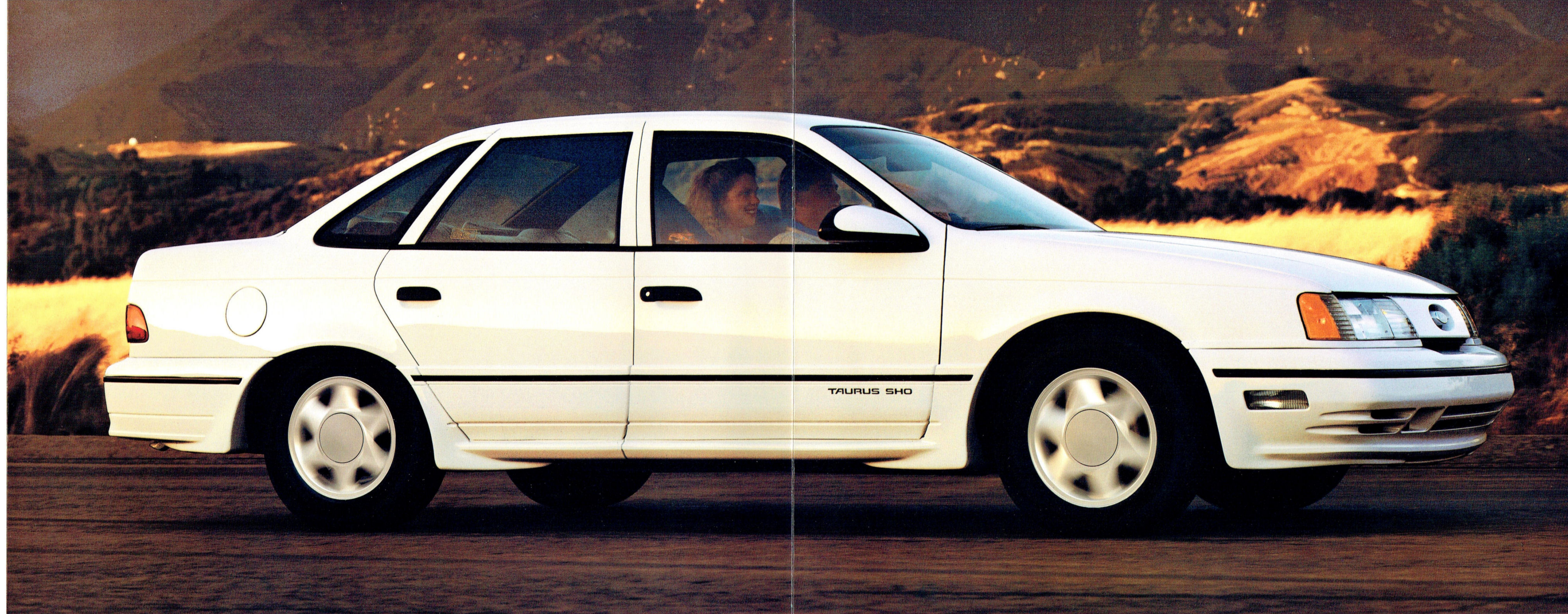
Luxurious and comfortable seating, however, is just the first item on SHO's long list of appointments.

The steering wheel is wrapped in leather. Carpeting is a plush 18-oz. cut-pile. Speed control is standard, too. So are power windows and locks, remote-control fuel filler door and trunk lid releases, diagnostic instrument cluster, courtesy light group, dual illuminated visor mirrors with secondary side visors, rear window defroster, and front cornering lamps.

The SHO Preferred Equipment Package brings even more luxury-level comfort by way of the electronic climate-control air conditioning system. And convenience, too, with the autolamp, illuminated entry and keyless entry systems.

The High-Level Audio System is included as well, to which you can add the outstanding quality and performance of the optional Ford JBL Audio System. An audio digital disc player is also available.

The Ford Taurus SHO. Who says you have to travel to Europe to get a luxury sport sedan possessing true world-class performance and comfort?



Taurus SHO in Oxford White, with fog lamps, aerodynamic ground effects, and new 16" Goodyear Eagle GT+4 tires on unique cast aluminum wheels. Designed for SHO, these "V" speed-rated directional radials combine high-performance handling with all-season traction.

Taurus SHO with the new Plus Package takes you to greater heights of SHO luxury-sport driving enjoyment. The package includes a rear deck lid spoiler, black rearview mirrors and black-out center pillar treatment. Order your SHO Plus in Oxford White and get white-painted cast aluminum wheels (or sparkle paint treatment if you prefer). Power moonroof and the Ford JBL sound system are also included. For availability of this special SHO model, see your Ford Dealer.



OPTIONS AVAILABILITY

Options shown or described in this catalog are available at extra cost and may be offered only in combination with other options or subject to additional ordering requirements or limitations.

PRODUCT CHANGES

Ford Division reserves the right to change product specifications at any time without incurring obligations.

"ASK YOUR FORD DEALER"

Following publication of this catalog, certain changes in standard equipment, options, prices and the like, or product delays, may have occurred which would not be included in these pages. Your Ford Dealer is your best source for up-to-date information.

SPECIFICATIONS

Drivetrain	Front-wheel drive
Engine type	3.0L DOHC 24-valve V-6
Induction system	Sequential multi-port electronic fuel injection
Compression ratio	9.8
Engine controls	Electronic Engine Control (EEC-IV) computer
Exhaust system	Dual
Horsepower, SAE net	220 @ 6200 rpm
Torque, SAE net	200 lb.-ft. @ 4800 rpm
Transaxle	5-speed manual overdrive
	Gear ratios: 3.21:1 (1st), 2.09:1 (2nd), 1.38:1 (3rd), 1.02:1 (4th), 1.02:1 (5th), 3.14:1 (reverse)
	Transfer ratios: 3.74:1 (1st thru 4th gears and reverse), 2.73:1 (5th gear)
Front/rear suspension system	Independent MacPherson type with performance handling components including higher-rate strut valving, stiffer suspension bushings, and larger stabilizer bars (.94"—front, 1.05"—rear)
Steering	Power rack-and-pinion, 15.2:1 ratio
Brakes	Power 4-wheel discs with anti-lock brake system
Tires	Goodyear Eagle GT+4 all-season high-performance, P215/60R16 94V

