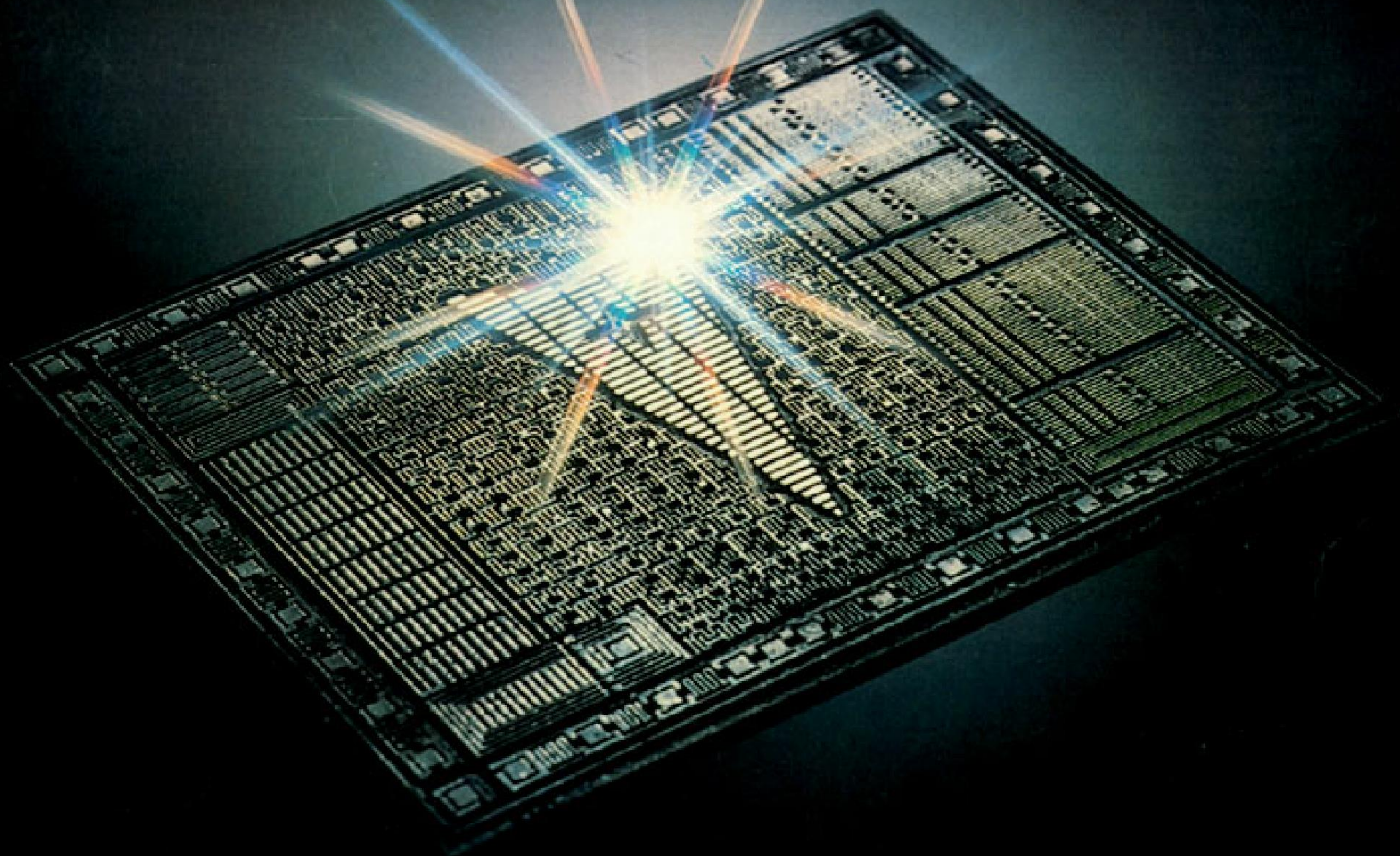


1981 PONTIAC



MORE PONTIAC KNOW-HOW TO THE GALLON

EXCITING THINGS HAPPEN WHEN YOU PUT THE BRAIN OF A

In less than the blink of an eye...

Sensors continuously monitor engine conditions as you drive. Everything from engine temperature to emissions in the exhaust to the altitude and barometric pressure.

Tiny computer chips take this data, analyze it, then signal the carburetor for just the right mixture of fuel and air... all this *continuously*.

It's called GM's Computer Command

Control, now in every 1981 Pontiac (except diesel models). And it's just one of the many innovations that have come from Research & Development, Engineering and Design to make up... Pontiac's New Efficiency System.

Like never before, Pontiac is showing its know-how to meet the challenges of the times.

You'll see this know-how in exciting

new aerodynamic, wedge-shaped designs—like the restyled Grand Prix.

You'll see it in important new engineering features on various models. Like automatic overdrive transmission. Automatic transmission with torque converter clutch. Low-drag disc brakes. High-

COMPUTER INTO THE HEART OF A PONTIAC

pressure tires for less rolling resistance. Electronic spark advance.

And, you'll see new styling flair as only Pontiac knows how to bring it to you.

Just shows what you can do when you put your heart into it.

A Word About This Catalog: We

have tried to make this catalog as comprehensive and factual as possible and we hope you find it helpful. However, since the time of printing, some of the information you will find here may have been updated. Also, some of the equipment shown or described throughout

this catalog is available at extra cost. Your dealer has details and, before ordering, you should ask him to bring you up to date.

The right is reserved to make changes at any time, without notice, in prices, colors, materials, equipment, specifications and models. Check with your Pontiac dealer for complete information.



ABOUT THE COVER:

Pontiac's famous symbol is superimposed on a representation of a tiny computer chip as used in GM's Computer Command Control.

GRAND PRIX

Nearly 20 years ago, Pontiac created a special new kind of car—designed for a driver's personal luxury—and called it Grand Prix.

Now many Grand Prixes and countless imitations later, it's time to redefine personal luxury for a fuel-conscious computer age.

Pontiac know-how for 1981 does it well. With an exciting new look that raises the spirit while reducing wind resistance. Note the sloping new hood. Raised rear deck. The lower profile front grille.

This year Grand Prix comes in three versions: Grand Prix, Grand Prix LJ, and new top-of-the-line Grand Prix Brougham.

GRAND PRIX: Affordably indulgent. New computer-assisted efficiency!*

Rich new aerodynamic contours! And Pontiac's lowest Grand Prix price!

You couldn't ask

for much more than that. But Pontiac wants you to have it all.

So expect that famous Grand Prix ride. With special body mounts that help isolate you from road noise. A standard V-6, or **available V-8 diesel**.† Power steering and power brakes. Extensive corrosion protection. Plus more

trunk space than last year.

GRAND PRIX LJ: Because some like it rich. Feast your eyes on one of the best dressed examples of aerodynamic efficiency on the road today.

Grand Prix LJ's wedge-shaped contours are accented with body-color sport mirrors. An extra-wide, full-length rocker

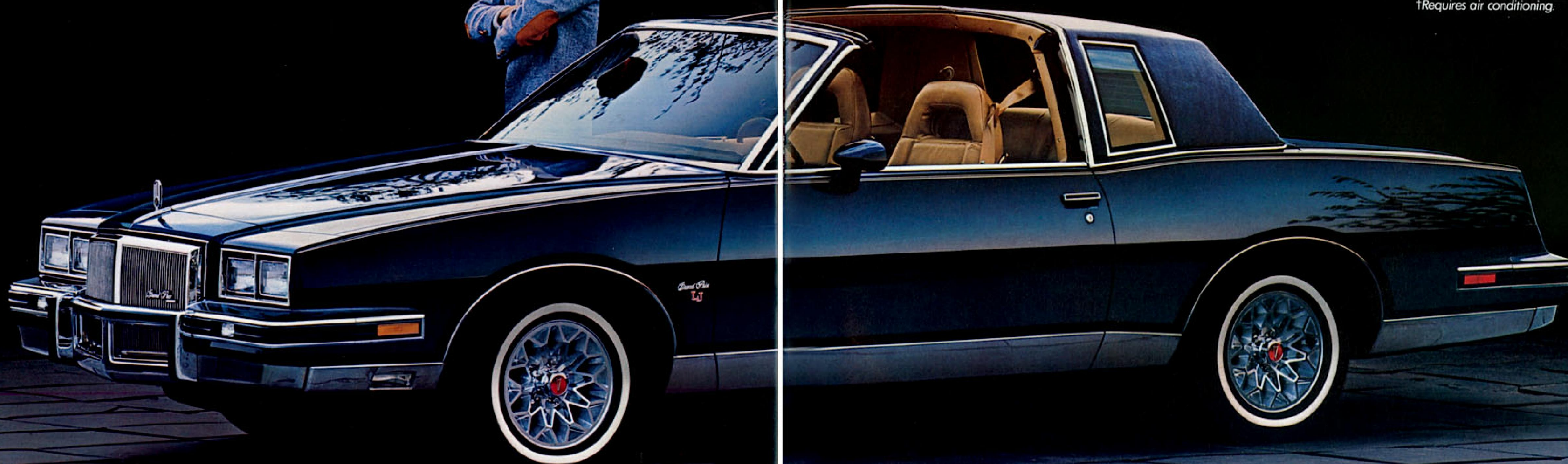
panel molding. Plus bright sill and hood edge moldings.

Grand Prix LJ's ride is richly efficient. **With standard V-6 economy.** And radial tuned smoothness.

What's more, the automatic transmission torque converter clutch helps aid fuel economy.

*See page 42 for fuel economy ratings.

†Requires air conditioning.



Grand Prix LJ.
Designed to be sleek and slippery in the wind.



The Grand Prix LJ at its finest. This is how we dress it out when you order the available bucket seats with cloth-and-leather trim in the seating area.

If you need room for six, you may prefer to stay with the standard notchback seat with its fold-down center armrest and special LJ upholstery.

In the standard Grand Prix, the notchback seats come with a folding armrest and pull straps on the doors.

GRAND PRIX BROUGHAM: Our newest and best to you. Some people are never satisfied, including Pontiac designers. So they came up with a new model with more standard

appointments than Grand Prix has ever offered before.

It's the first Grand Prix Brougham. A masterpiece with distinctive outside opera lamps. Padded landau top with

new formal rear window and special identifying trim.

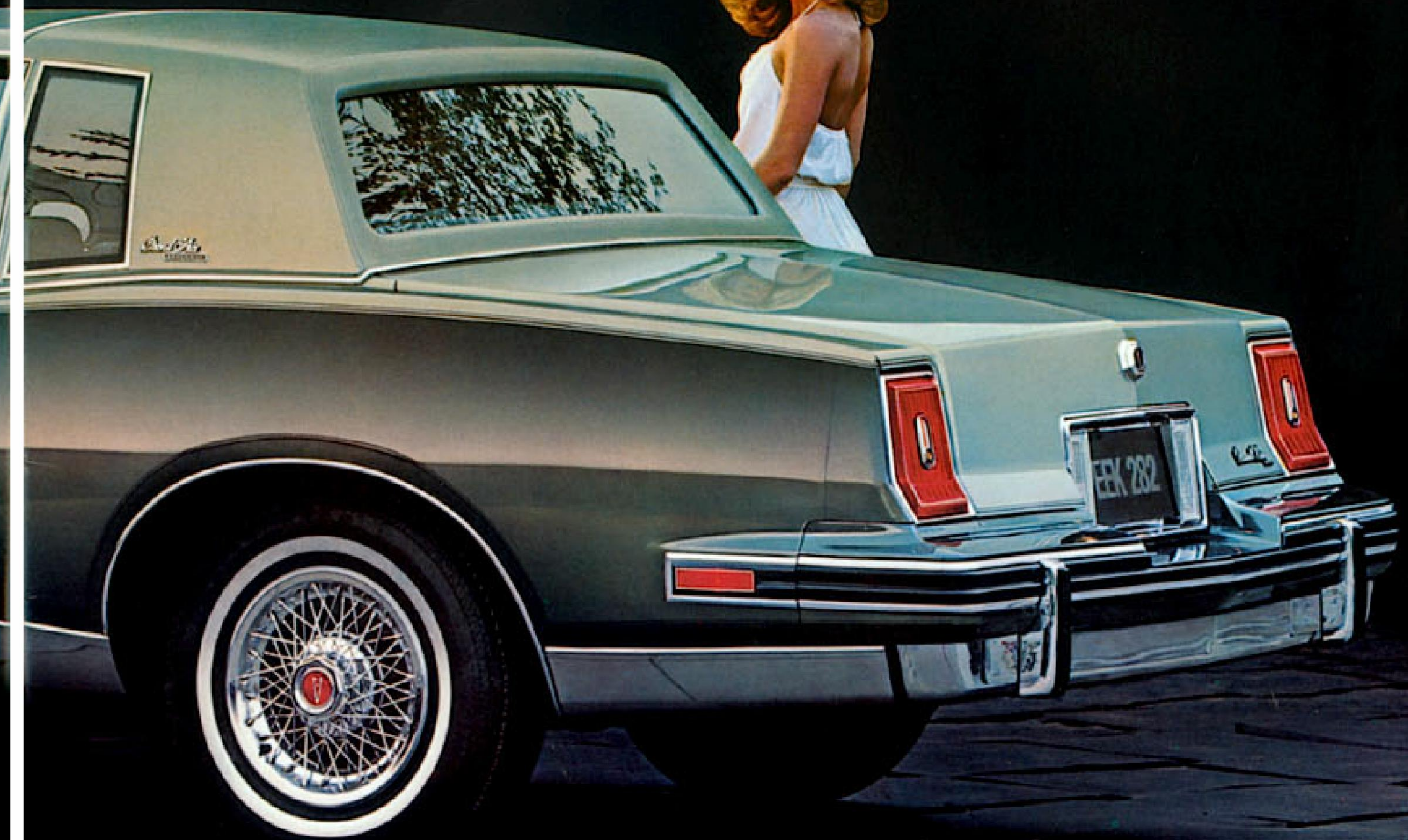
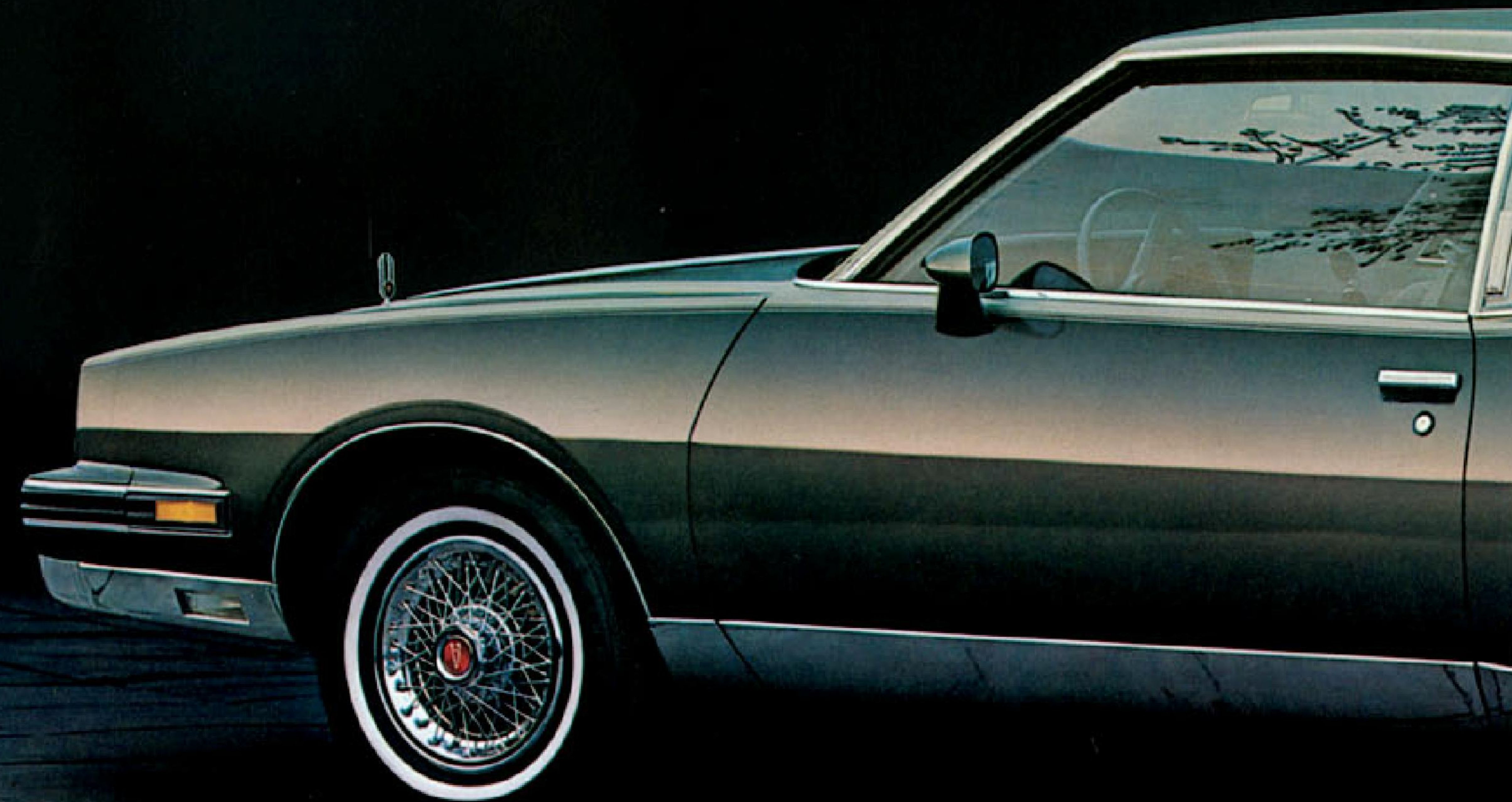
Introducing Pontiac's New Efficiency System. The engineers have worked hard to make these

cars timely as well as tempting. With GM's new Computer Command Control that monitors and adjusts air/fuel mixtures to astounding exactness. New high-pressure design tires for less roll

resistance. And 30,000 miles between scheduled tune-ups.

It's a new age, and Pontiac know-how is ready with redefined per-

sonal comfort and efficient new Grand Prix style. (See Facts and Figures section for more details.)



A new level of Grand Prix richness is here... and its name is Grand Prix Brougham.



Grand Prix Brougham invites you to the presidential suite of GP interiors.



Grand Prix Brougham indulges as few cars can. With an extra-special cloth upholstery, 60/40 split seat, power windows, quartz clock, plush carpeting and added sound insulation.

Pleasant new chimes to charm you. It's a new three-tone system that gently reminds you of keys left in the ignition, seat belts left unfastened or headlamps left on.

As a finishing touch, Grand Prix Brougham has its own rich instrument panel applique of simulated teakwood and inlaid walnut.

If you still haven't had your fill, comfort and convenience options abound. Including cruise control with new resume-speed feature. And a wide choice of Delco-GM sound systems.

PHOENIX

Pontiac's '81 "X" Car. Sure, it would have been easy to ride the explosive popularity of last year's Phoenix. With its front-wheel drive. Room for five. And great gas economy.*

But in times like these, you demand

even more. And so does Pontiac.

Introducing the most gas-efficient 1981 Pontiacs you can buy: The dressy Phoenix Coupe (shown left) and sporty Phoenix 5-door Hatchback (shown right, with "SJ" Package).

For 1981, Phoenix is endowed with new computer-assisted carburetion. Engines that compensate for varying altitudes and octanes. Manual transmission overdrive for added efficiency. And more. It's all part of



Pontiac's New Efficiency System that makes Phoenix Pontiac's mileage winner. That's more know-how to the gallon.

PHOENIX HATCHBACK: Pontiac's

answer to the "econo-box." The great American alternative is back with sleek aerodynamic lines. Stylish new grille and tail lamps. Smoothly integrated bumpers. And new available two-tone

paint treatments.

To carry all this off, there's a sturdy standard L4 engine. Or an available V-6 and new available floor-mounted automatic.

**See page 43 for fuel economy ratings.*





Over 40 cu. ft. of cargo space. Raise the pneumatic-assisted rear hatch door, fold down the rear seat, and you'll find a well-trimmed cargo area for a multitude of grips or groceries.

Or pull the rear seat back again and discover room for five adults. And there's a removable cargo cover available to hide the storage space behind the rear seat.

The Hatchback LJ features luxury notch-back seating or available luxury bucket seats, as shown. Plus carpeted load floor, brushed chrome-look door trim applique and special trim inside and out. (See Facts and Figures section for more details.)



PHOENIX COUPE: Style with strength. The lines are crisp, neat, formal. A handsome modular-style instrument panel is standard. As are conveniences like a column-mounted lever that lets you signal turns, dim headlamps or wipe windows (with pulse feature)

with one quick motion.

But underneath, this new Phoenix Coupe is plenty tough.

Double-paneled durability. Doors, hood and rear deck lid are all double-panel construction. And corrosion protection is extensive.

If you're sports minded, a special "SJ" Option Package—available on Coupe and Hatch—features Rally suspension, special graphics.

No, Pontiac didn't have to improve on Phoenix. But aren't you glad they did! That's Pontiac know-how.

White-lettered tires supplied by various manufacturers.



Turn your Phoenix Coupe into a stoplight celebrity with the available sporty "SJ" Option Package, shown with special extra-cost graphics.



Phoenix Ground Control. Shown with available contoured bucket seats and automatic floor-shift console.

Immortalized in the recent "Smokey and the Bandit" movies, be sure to see "Smokey and the Bandit II" starring Burt Reynolds, Jackie Gleason, Jerry Reed, Dom DeLuise and Sally Field.

FIREBIRD

A new Efficiency System complements Firebird's aerodynamics.

Pontiac engineers know how much you love Firebird. So for 1981 they've kept the thrill while carefully honing Firebird's

design for driving efficiency.*

Pontiac know-how puts together low-drag front disc brakes with an early fuel evaporation system and GM's Computer Command Control.

TRANS AM: A new generation of turbo excitement.

Beneath the available new hood decal you'll find your favorite sports machine, with standard V-8, still commands the road with fully

functional spoilers and air dams.

It's begging to be ordered with available hatch roof panels and a spectacular turbo V-8 (requires air conditioning), now with a light display blazing out of the hood scoop to indicate turbo boost.

Add the available special handling package to go.

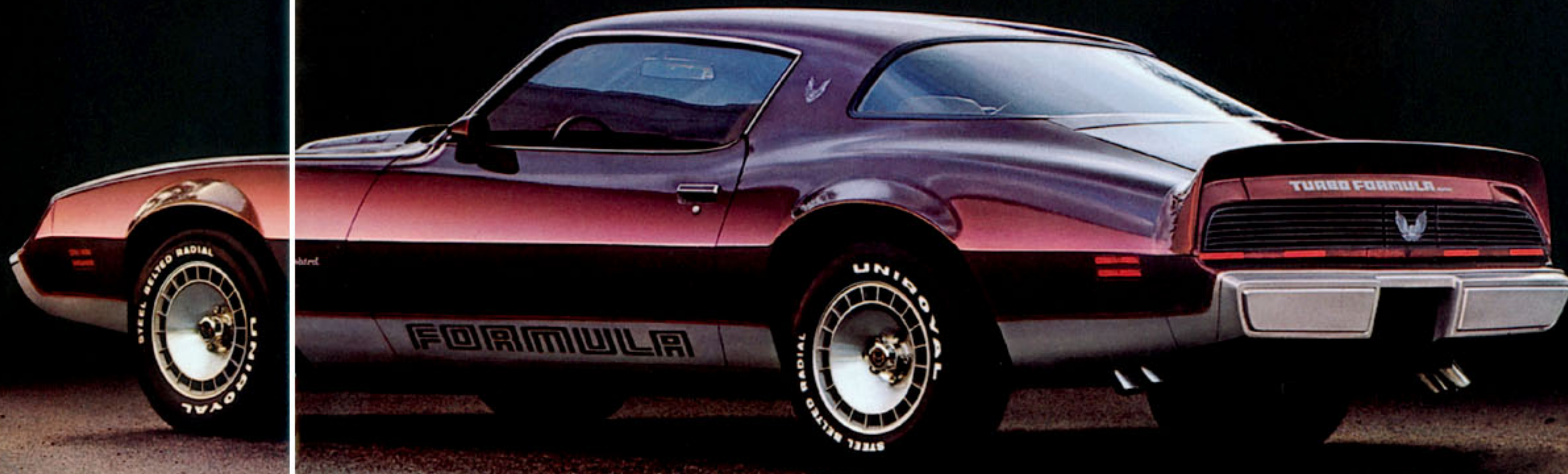
It mates hefty stabilizer bars with four-wheel disc brakes and eight-inch wheels behind 70 series tires. There's even a limited slip differential. (See the Facts and Figures

section for full details.)

FORMULA FIREBIRD: The sophisticated sportster. Fortify yours with a choice of available engines: the formidable turbo V-8 (requires air conditioning) or a 5.0 liter V-8 with manual four-speed.

*See page 44 for fuel economy ratings.

White-lettered tires supplied by various manufacturers.



1981 Trans Am (left) and Formula Firebird epitomize Pontiac soul and sophistication. Trans Am has been immortalized in the recent "Smokey and the Bandit" movies. Be sure to see "Smokey and the Bandit II" starring Burt Reynolds, Jackie Gleason, Jerry Reed, Dom DeLuise and Sally Field.



What better way to appreciate the thrill of a Trans Am or Formula with available turbo V-8† than by watching turbo boost lights blaze out of the hood scoop?

Flank them with available options like a Delco-GM electronically tuned radio and cruise control with new resume-speed feature.

†Requires air conditioning.

ESPRIT: The plushest Firebird. Rich interiors complement the acoustically insulated body. Custom buckets and luxury cushion steering wheel are standard.

Available options abound, such as the seek and scan Delco-GM electronically

tuned radio and cassette with extended range rear speakers. And now cruise control has a new resume-speed feature.

A new front disc brake design cuts friction. That's just part of the Efficiency System Esprit shares with base Firebird.

There's also an early fuel evaporation system for smooth driving during warm-ups. **Corrosion protection is extensive.**

And Esprit has an economical V-6, automatic

transmission, radial tuned suspension, power steering and brakes, all standard.

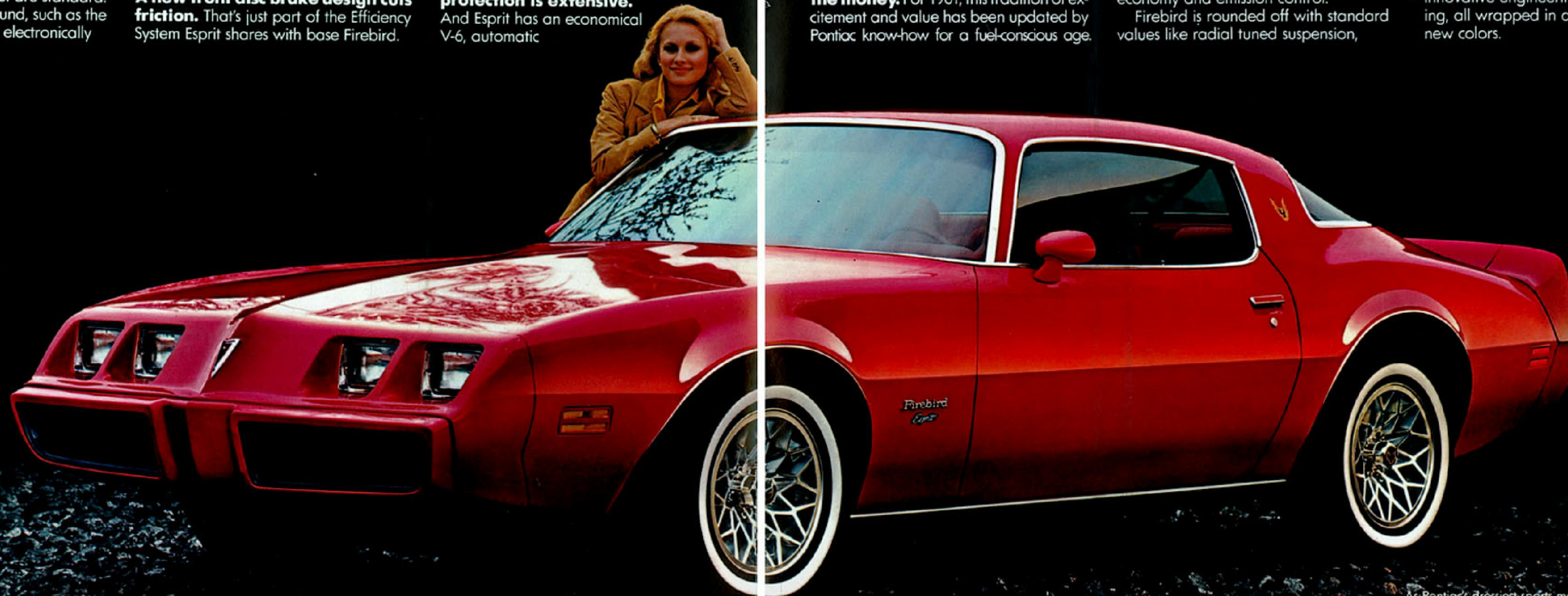
FIREBIRD: Lots of sporty style for the money. For 1981, this tradition of excitement and value has been updated by Pontiac know-how for a fuel-conscious age.

A standard V-6 comes with Pontiac's Efficiency System, which includes GM's Computer Command Control for fuel economy and emission control.

Firebird is rounded off with standard values like radial tuned suspension,

power steering and power brakes, **and a 21 gallon fuel tank.**

Firebird meets the future head-on with innovative engineering and classic styling, all wrapped in a display of bold new colors.



As Pontiac's dressiest sports machine, Esprit combines a plush interior with Firebird's roadworthy design.

PONTIAC

Pontiac know-how puts full-size comfort in touch with the times. With the efficiency-engineered Bonneville Broughams, Bonnevilles and Catalinas for 1981.* Pontiac kept the remarkable roominess

and ride you've come to expect. Added new styling touches. More convenience. Then fine-tuned these cars for a new level of standard driving economy. **With Pontiac's New Efficiency**

System. Featuring innovations like GM's new Computer Command Control for a precise air/fuel mixture. And a three-speed automatic transmission with torque converter

clutch for added fuel efficiency.

All are designed to help make these new Pontiacs among the most efficient full-size cars you've ever driven. (See Facts and Figures section for details.)

BONNEVILLE BROUGHAM:

A six-passenger model of efficiency. It's hard to imagine a full-size car timelier than Pontiac's top-of-the-line Bonneville Brougham. The styling is aero-

dynamic, with downswept hood and raised rear deck. **There's standard V-6 economy.** Plus an available V-8. Or for the best full-size mileage Pontiac offers, order the 5.7 liter diesel V8.†

*See page 45 for fuel economy ratings.
†Requires air conditioning.



Bonneville Brougham Sedan surrounds its new efficiency with top-of-the-line appointments.



Bonneville Brougham's comforts are timely. With 60/40 notchback seating for six in a new cloth design.

Genuine leather is also available in the pillowed seating areas. Power steering, power windows and power brakes are standard. So are new electronic chimes to gently remind you about keys, seat belts and headlamps.

And for the first time, the available cruise control comes equipped with a handy resume-speed feature.

BONNEVILLE: An enjoyable drive for efficiency. For 1981, Bonneville's legendary drivability has been specially refined for efficiency. New tail lamp design sets off functional aerodynamic styling. Standard power steering guides high-pressure tires designed to offer

less rolling resistance. Even the low-drag front disc brakes help reduce fuel-wasting friction.

Under the hood, a practical V-6 engine is standard. An economical diesel V-8† is available. Or if you order the economical 4-barrel V-8 . . . **a 4-speed**

automatic overdrive is available.†

Inside, there's plush notchback seating. Or for a sportier touch, cloth bucket seats, special instrumentation and console are available in Bonneville Coupe.

Legendary drivability, full-size economy, Pontiac plush. That's Bonneville for 1981.

†Requires air conditioning.



Wedge-shaped styling adds an efficient edge to Bonneville Coupe's renowned drivability.



Bonneville Coupe offers you the personalized comfort of available cloth bucket seats.

CATALINA: Affordable it is, ordinary it's not. For years, Catalina has been known for its full-size affordability. For 1981, Pontiac's New Efficiency System enhances that reputation. Teamed with a standard V-6 engine, this remarkable example of Pontiac know-how

offers you more than just good fuel economy. It can also help you save on service, thanks to long recommended maintenance intervals. **With 30,000 miles between tune-ups.**

But cars this frugal sometimes treat passengers the same way. Surprise!

Catalina gives you full-width seating for six. New luxury door trim. Thick cut-pile carpeting. Power steering and brakes. All standard.

Impressive features, good gas economy, easy affordability. Catalina puts full-size comfort in touch with today.



Why think smaller when you can get affordable efficiency in the new Catalina Sedan?



You probably didn't expect full-width seating this rich to be standard in a Catalina Sedan. But it is.

LEMANS

Count on Pontiac know-how to show the world a stylish six-passenger American mid-size that gets good mileage.* Introducing LeMans and Grand LeMans for 1981.

GRAND LEMANS: Formal and functional. Notice how gracefully Grand LeMans blends style and engineering. With a new formal roofline and available full vinyl top for the 4-door.

New taillight treatment and two-tone paint all working together to complement the wind-cheating shape.

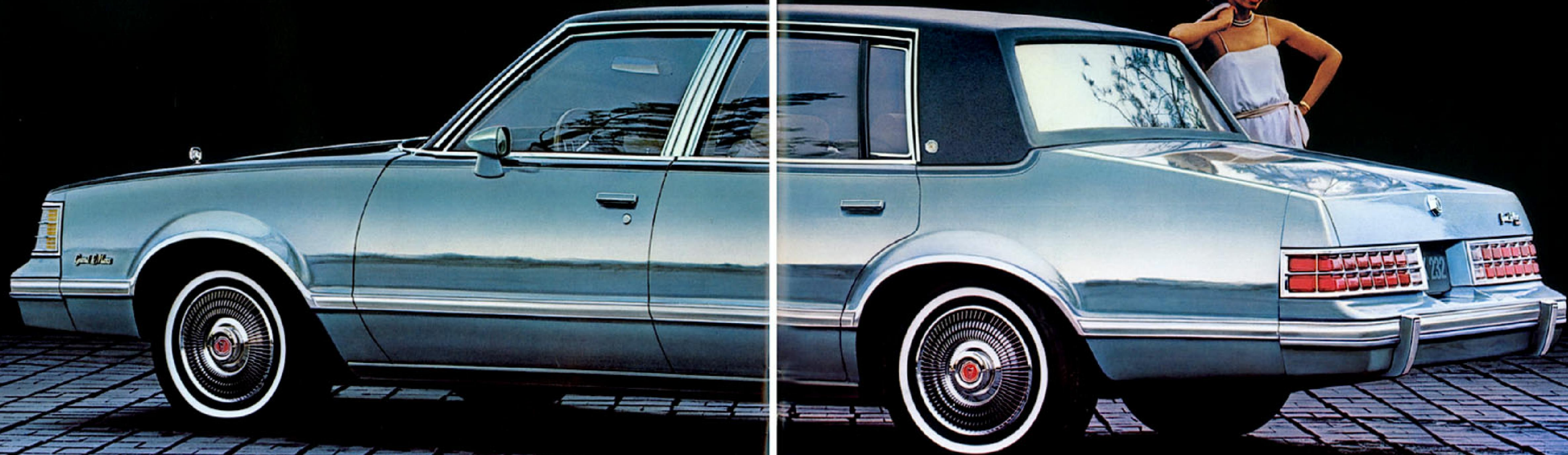
Beneath the acoustically-insulated interior, Pontiac's Efficiency System pro-

vides good mileage without diminishing your comfort. That's Pontiac know-how. **High-pressure radial tires reduce rolling resistance.** And they roll easily beneath a retuned full-coil suspen-

sion for a gas-saving good ride. Computer Command Control on the standard V-6 and available V-8 helps deliver smooth performance and fuel economy with reduced emissions. And a torque

converter clutch on the available automatic transmission helps improve fuel economy.

**See page 46 for fuel economy ratings and additional information.*



A new formal roofline tops off the stylish Grand LeMans sedan.



Cruise control is now available with a new resume-speed feature.

Among other options available are a Delco-GM electronically tuned radio with extended range rear speakers, and a lamp group that includes the new muted three-toned chimes that indicate unbuckled seat belts, keys left in ignition or headlamps left on.



What better place to travel with five friends than in Grand LeMans' roomy interior with available 60/40 notchback seat?

LE MANS: Efficient and affordable.

LeMans gives you the engineering features found on Grand LeMans: high technology corrosion resistance, automatic transmission with torque converter clutch to help improve fuel economy. A recovery system to help prevent

coolant loss, and available air conditioning with a blower that shuts off completely to reduce power drain. Plus... **30,000 miles between scheduled tune-ups.**

LeMans' price is hard to resist because of its many standard features: Power

steering. Power brakes. New cloth interiors. Body-color bumpers, front and rear. Full-width seating. Sound insulation. **And an economical V-6 engine.**

No car meets today's challenge for automotive efficiency with more style than Pontiac LeMans and Grand LeMans.



For mid-size value and style with advanced engineering, take a close look at the new LeMans.



LeMans standard interior takes you far from the ordinary with simulated walnut applique instrument panel and full-width seating.

SAFARI WAGONS

Pontiac is more determined than ever to bring you new wagon efficiency in hardworking designs.* And it shows.

Pontiac's Efficiency System includes GM's new Computer Command Control, aerodynamic styling and other important engineering improvements.

All wrapped up with new Pontiac flair. **ACCOMMODATING FULL-SIZE WAGONS.** This year, top-of-the-line Bonneville Safari and lower-priced

Catalina Safari answer your full-size demands.

Efficiency. Look at some of the features in Pontiac's new Efficiency System.

New four-speed automatic over-drive** transmission helps the standard V-8 save fuel. Or if you prefer, to save even more, a diesel V-8 is available.** High-pressure tires help reduce rolling resist-

ance. And aerodynamic styling helps cut wind resistance.

Work capacity. A three-way tailgate and 87 cu. ft.‡ for cargo make

loading and hauling easy.

Style. An imposing grille and tail lamps are new for 1981.

Comfort. Catalina Safari has full-width seats, power brakes and steering.

Bonneville Safari offers even more standards, like added sound insulation and fully carpeted load area.

CAPABLE MID-SIZE WAGONS. New Grand LeMans Safari and economical new LeMans Safari are loaded with capabilities.

The two-way tailgate, spacious 72.4 cu. ft.‡ of cargo area and power brakes

help you haul big cargoes.

The standard V-6 has an automatic transmission with torque converter clutch that helps save fuel.

Anti-corrosion treatments work hard to help protect your investment and keep your Safari looking great over the long haul. Pontiac know-how shows up in all the new hardworking Safari Wagons. Check them out at your Pontiac dealer's soon. (See Facts and Figures section for more details.)

*See pages 47 & 48 for fuel economy ratings.

**Requires air conditioning.

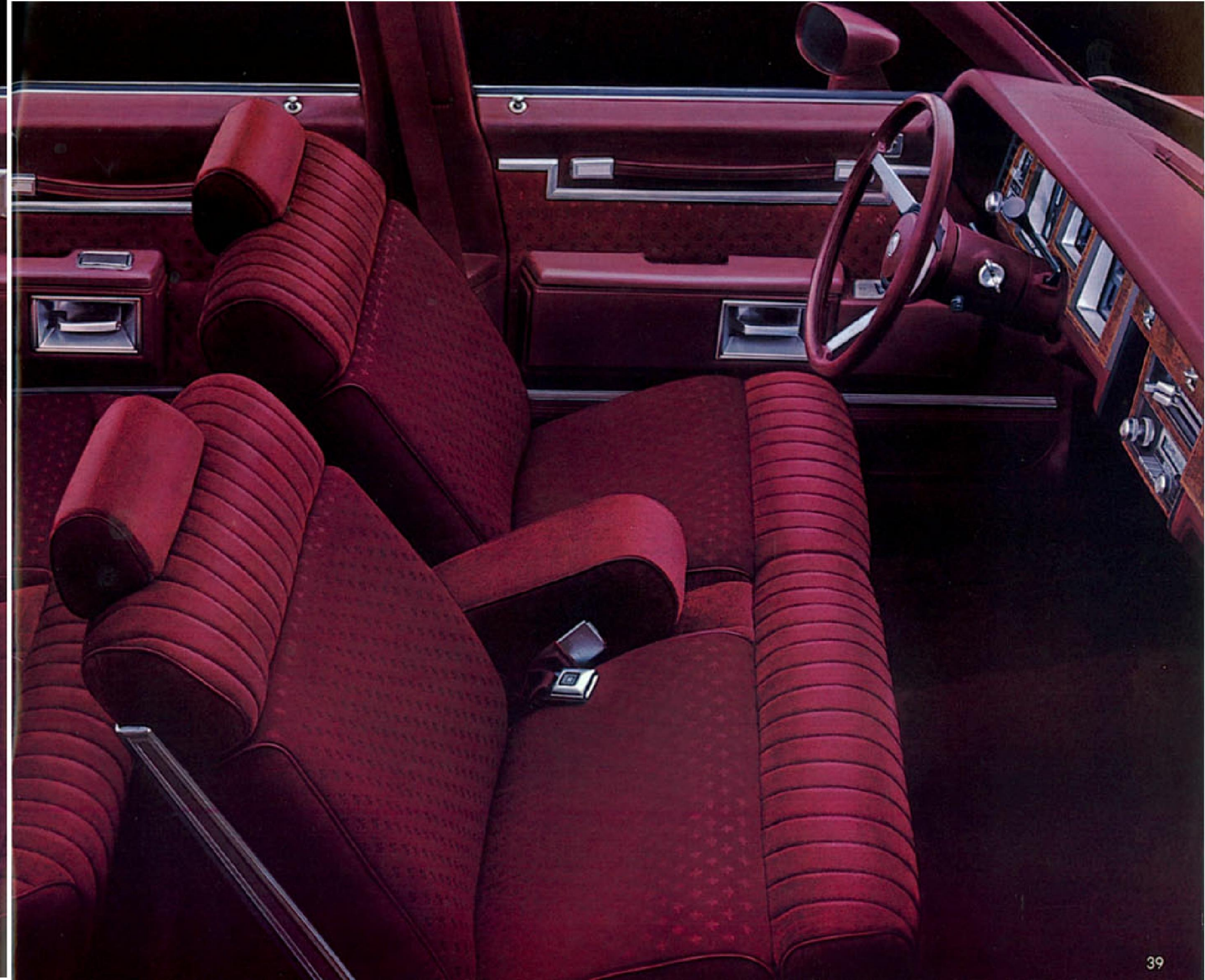
‡Load space with rear seat down.



Bonneville Safari (upper right) and Grand LeMans Safari (lower left) are as right for taking Jack Nicklaus to a celebrity dinner as they are for carrying his golf clubs.



Turn Bonneville Safari into a comfortable tourer for eight with available 60/40 notchback and available third seat.

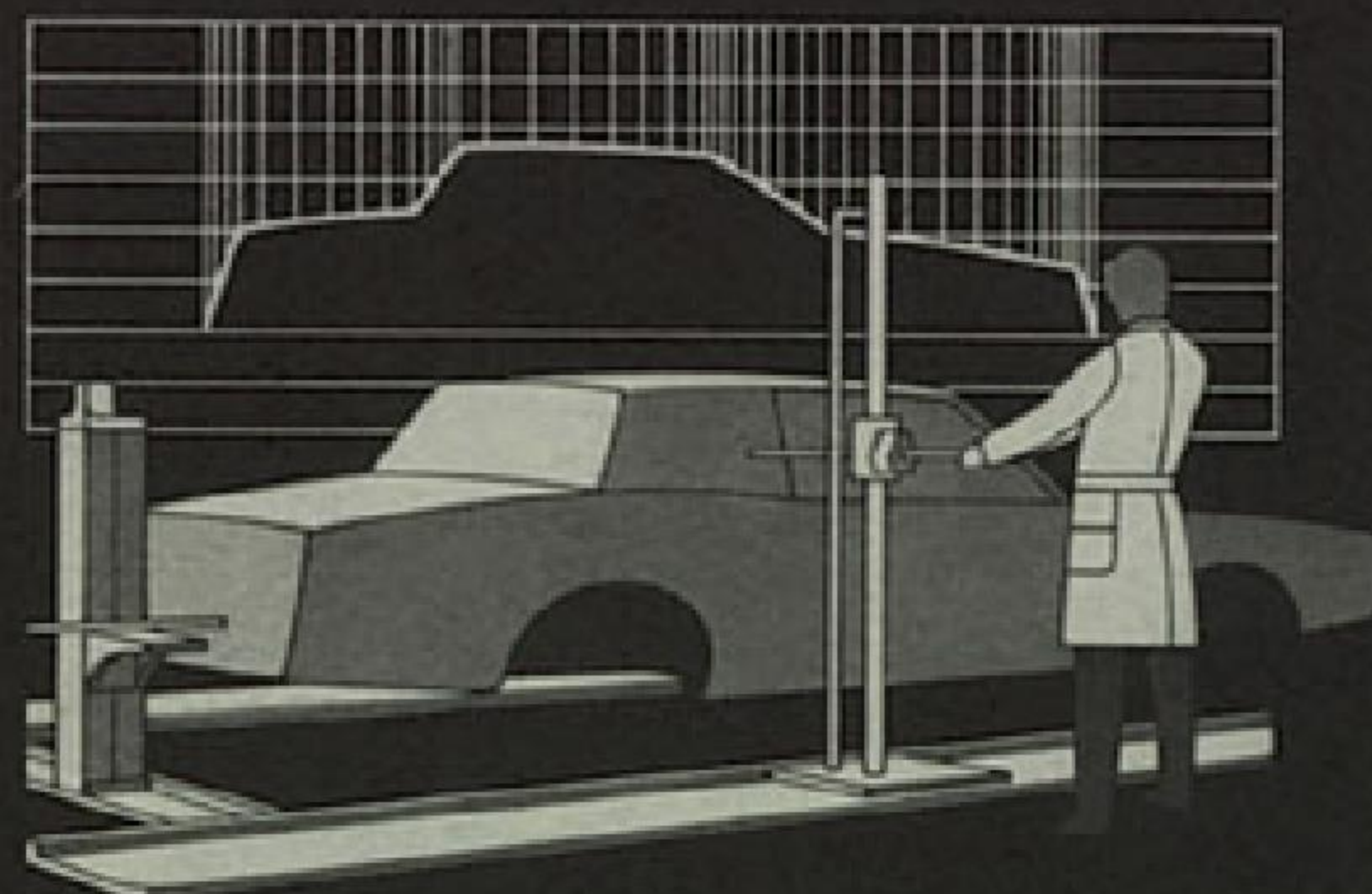




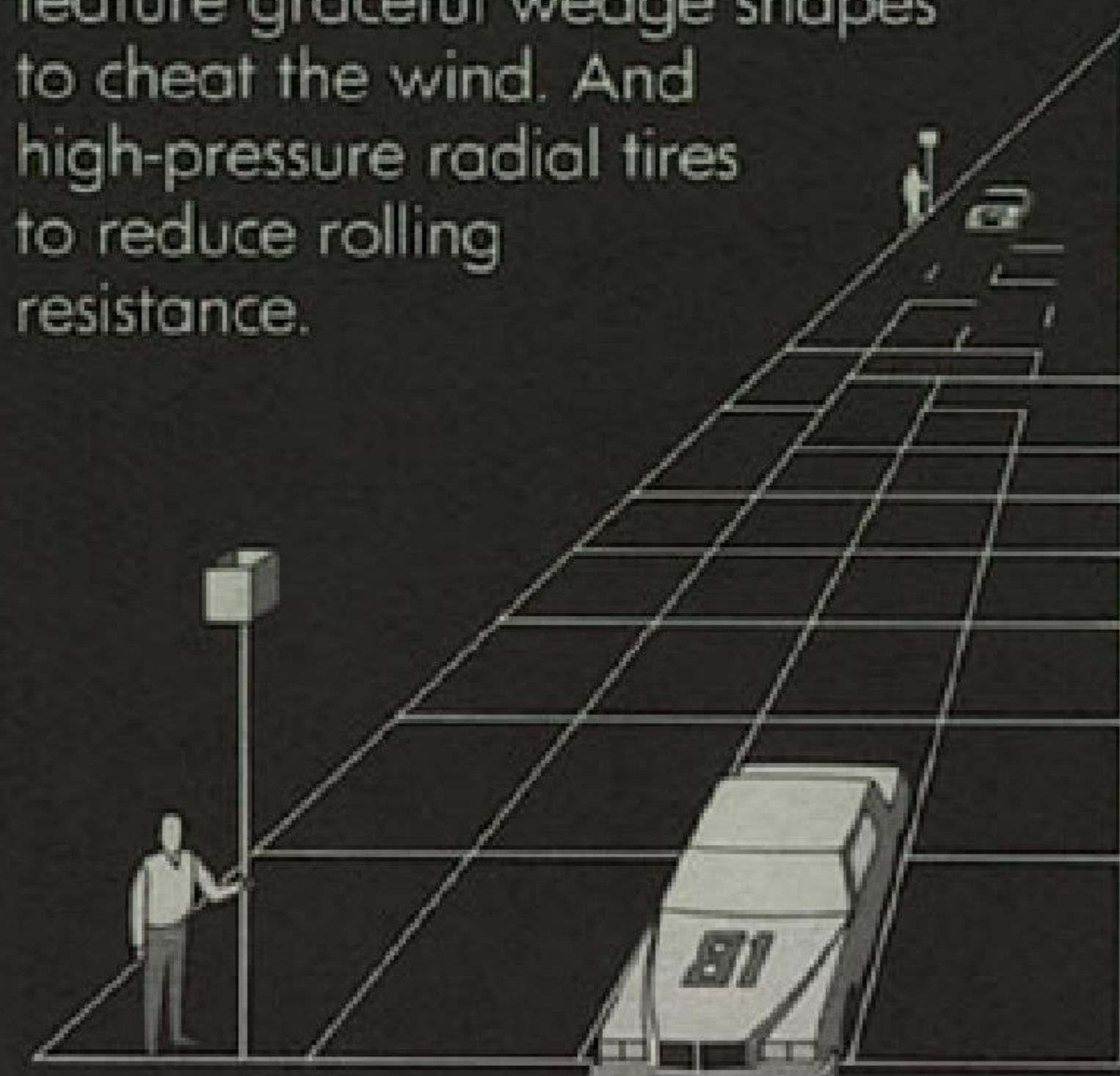
When you're ready to leave the work behind, so is Grand LeMans Safari with available luxury 60/40 notchback seats.

BEHIND THE SCENES WITH THE MOST ADVANCED ENGINEERING IN PONTIAC HISTORY.

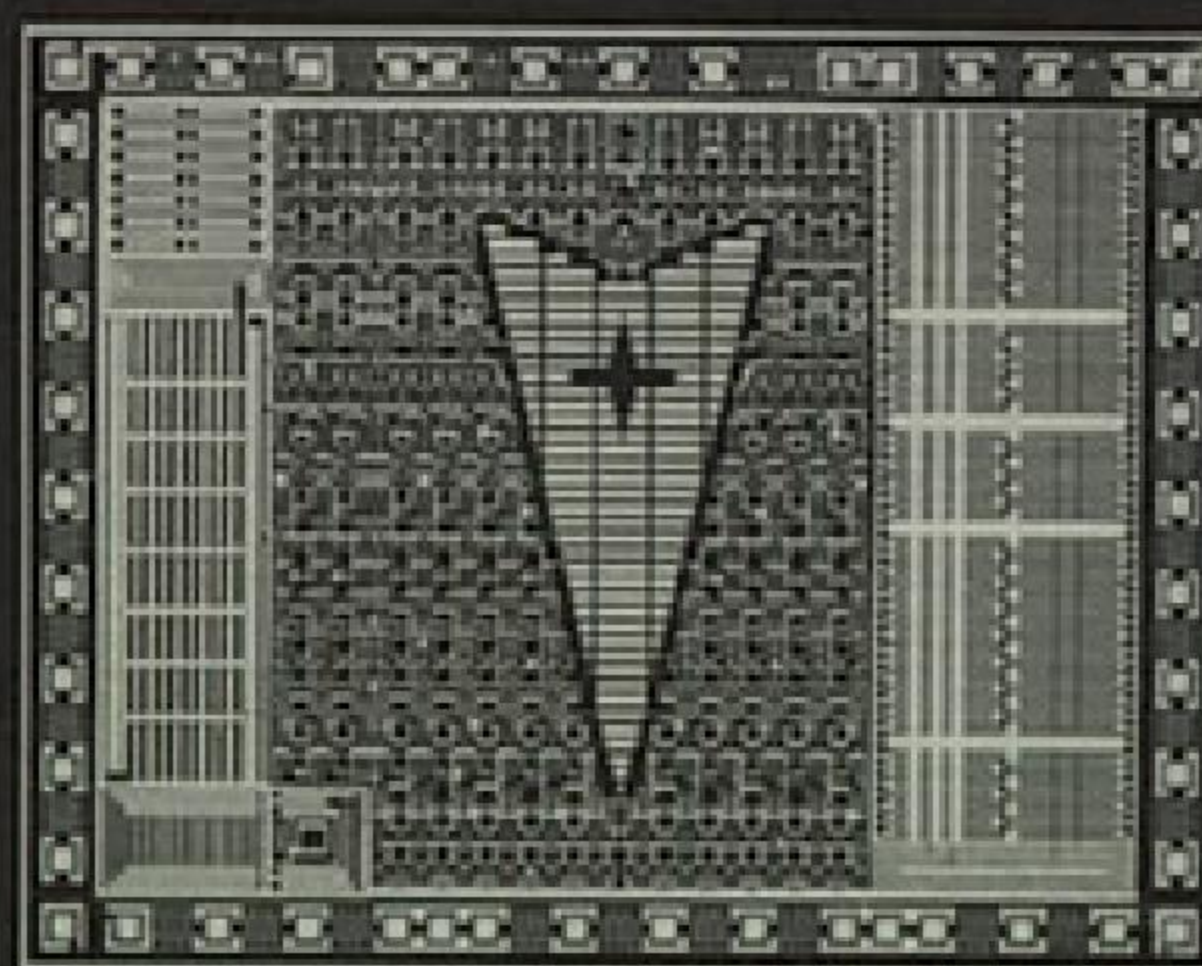
Beneath the handsome, purposeful lines of your favorite 1981 Pontiac, you'll find an automobile designed to be remarkably efficient.



Reduced friction from the wind and road. Most Pontiac models feature graceful wedge shapes to cheat the wind. And high-pressure radial tires to reduce rolling resistance.



They're all part of Pontiac's Efficiency System that includes low-drag disc brakes on some models. And an early fuel evaporation system for smooth driving during warm-ups.



On-board computer technology. Tiny computer chips, used in GM's Computer Command Control, continuously monitor and adjust the air/fuel mixture in the engine for smooth performance, fuel economy and cleaner exhaust.

Adjustments are made automatically for altitude, barometric pressure and temperature. All this to help your new Pontiac retain power in the mountains and run efficiently in cold weather. The engine even

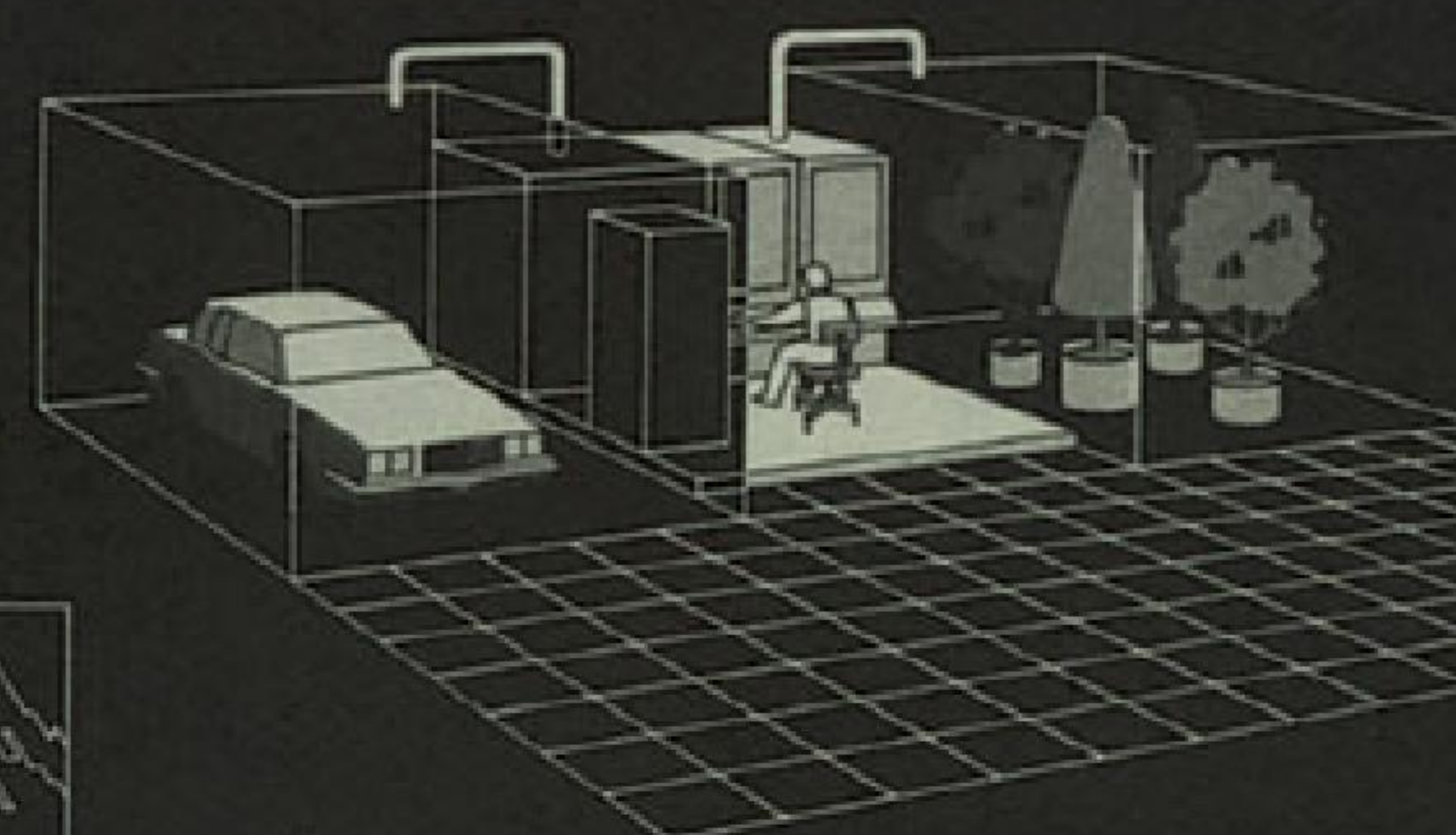


adjusts to the octane of your gasoline or gasohol to help prevent knock.



New transmission innovations.

Most available automatics have a torque converter clutch to help improve fuel economy. Some available automatics feature overdrive.



All in the cleanest running Pontiacs in history.

And these new Pontiacs are designed to produce no more hydrocarbons—a principal cause of smog—than the grass, trees and flowers of an average house yard.

Ask your dealer for more details about Pontiac's Efficiency System.

Now that you've decided on a Pontiac, you're ready for the next step: selecting the combination of "extras" that will make it uniquely yours. Take your time and study Pontiac's long list of

standard and available features as well as popular option groups. Then see your dealer. Options listed in the group packages are also available individually unless otherwise indicated.

GRAND PRIX FACTS & FIGURES

GRAND PRIX, GRAND PRIX LJ, GRAND PRIX BROUGHAM

GROUP FEATURES (Select group for you)

	GROUP 1	GROUP 2	GROUP 3
Air conditioning, custom	X ₆	X ₆	X ₆
Belts, custom color-keyed	X ₁	X ₁	X ₁
Cruise control, resume-speed			X
Glass, all windows Soft Ray	X	X	X
Lamp group		X ₂	X ₂
Mats, front/rear floor		X	X
Mirrors, sport—LH remote, RH man. convex		X ₃	X ₃
Power door locks			X
Power seat, driver			X
Power windows		X ₂	X ₂
Radio, Delco-GM AM	X		
Radio, Delco-GM AM/FM stereo		X	X
Steering wheel, luxury cushion		X ₁	X ₁
Steering wheel, tilt		X ₄	X ₄
Wheel covers, deluxe	X ₅		
Wheel covers, wire			X
Wheels, Rally IV		X	
Windshield wipers, controlled cycle			X

1—Standard LJ, Brougham.

2—Standard Brougham.

3—Standard LJ, Brougham; required with specific two-tones.

4—Optional with luxury cushion or custom sport steering wheels only.

5—Standard LJ; not available Brougham.

6—Required with diesel engine in California.

S=Standard A=Available —=Not Available

OTHER FEATURES

	Grand Prix	Grand Prix LJ	Grand Prix Brougham
Air conditioning, auto. climate control	A	A	A
Alternator, heavy-duty 70 amp	A	A	A
Axle, limited slip differential	A	A	A
Battery, heavy-duty	A	A	A
Bumper guards, front	A	A	S
Bumper guards, rear	A	A	A
Bumper rub strips, front and rear	S	S	S
Clock, digital quartz	A	A	A
Column-mounted dimmer switch	S	S	S
Deck lid release, remote control	A	A	A
Defroster, electric rear window	A	A	A
Gages, instrument panel (inc. trip odometer)	A	A	A
Gages, rally & I.P. tach (inc. trip odometer)	A	A	A

OTHER FEATURES (Cont.)

	Grand Prix	Grand Prix LJ	Grand Prix Brougham
Guards, door edge	A	A	A
Hatch roof, removable	A	A	A
Headlamps tungsten quartz halogen	A	A	A
Insulation, additional acoustical	A	S	S
Lamp, dome reading	A	A	A
Lamp, door courtesy	A	A	A
Lamps, cornering	A	A	A
Luggage compartment trim	A	A	A
Mirrors, sport—LH remote, RH remote convex	A	A	A
Mirrors, illuminated visor RH	A	A	A
Mirror, visor vanity RH	A	A	A
Molding, body side	A	A	A
Molding, wide rocker panel	A	S	S
Moldings, windowsill	A	S	S
Molding, windsplit and stand-up hood ornament	S	S	S
Moldings, wheel opening	S	S	S
Power antenna, automatic	A	A	A
Power antenna, AM/FM/CB tri-band	A	A	A
Radio, Delco-GM AM/FM	A	A	A
Radio, Delco-GM AM/FM stereo & cassette tape player	A	A	A
Radio, Delco-GM AM/FM ETR stereo w/seek & scan	A	A	A
Radio, Delco-GM AM & stereo 8-track tape player	A	A	A
Radio, Delco-GM AM/FM stereo & stereo 8-track tape player	A	A	A
Radio, Delco-GM AM/FM stereo w/40-channel CB	A	A	A
Radio speaker, rear	A	A	A
Radio speakers, dual front & rear	A	A	A
Radio speakers, dual front	A	A	A
Radio speakers, dual rear extended range	A	A	A
Rally handling suspension	A	A	A
Seat, 60/40	A	A	S
Seat, power driver	A	A	A
Seats, bucket inc. console	A	A	—
Seat, reclining passenger	A	A	A
Springs, load carrying	A	A	A
Steering wheel, custom sport	A	A	A
Stripes, paint	A	A	A
Stripes, lower accent	A	A	A
Sunroof, power glass	A	A	A
Sunroof, power metal	A	A	A
Top, padded landau	A	A	S
Trailer group, light	A	A	A
Two-tones, specific	A	A	A

TIRES

	Grand Prix	Grand Prix LJ	Grand Prix Brougham
195/75R14 blackwall steel-belted	S	S	S
195/75R14 whitewall steel-belted	A	A	A
205/75R14 whitewall steel-belted	A	A	A
Puncture sealant (with 195/75R14 whitewall steel-belted)	A	A	A

WHEELS

Cast aluminum (silver, gold)	A	A	A
Rally IV	A	A	A
Wheel covers, custom	A	A	S
Wheel covers, deluxe	A	S	—
Wheel covers, wire	A	A	A
Wire wheel cover locking package	A	A	A

DIMENSIONS

Grand Prix, LJ, Brougham

	Mm.	In.
Overall length	5128	201.9
Overall width	1832	72.1
Wheelbase	2745	108.1
Tread (front/rear)	1486/1467	58.5/57.8
Head room (front/rear)	956/961	37.6/37.8
Leg room (front/rear)	1086/923	42.8/36.3
Shoulder room (front/rear)	1432/1419	56.4/55.9
Hip room (front/rear)	1313/1394	51.7/54.9
Trunk cargo capacity (liters/cu.ft.)	470.7	16.6
Fuel tank capacity (liters/gallons)	68.5*	18.1*

*19.8 gallon (75 liters) fuel tank capacity with optional diesel engine.

Published dimensions are for a base automobile without optional equipment or accessories. Additional accessories or equipment ordered at the customer's option can result in a minor change in these dimensions.

ENGINES & EPA

Grand Prix, LJ, Brougham

	Fed.		Cal.	
	Hwy. Est.	EPA Est. MPG	Hwy. Est.	EPA Est. MPG
3.8 Liter* V-6 28b1.B**	S 30	(21)	S 29	(20)
4.3 Liter* V-6 28b1.P**	A 27	(18)	A 27	(18)
5.7 Liter V-8 Diesel(1) O**	A †	†	A †	†

*Equipped with GM Computer Command Control.

**Produced by GM: B—Buick, P—Pontiac, O—Oldsmobile.

(1) Requires air conditioning in California.

NOTE: Pontiac-built V-8 engine is available at start of production until approximately January 1, 1981. Check with your Pontiac dealer for current engine availability on all Grand Prix models.

†Please refer to enclosed information sheet for mileage figure.

PHOENIX FACTS & FIGURES

PHOENIX COUPE, PHOENIX 5-DR. HATCHBACK, PHOENIX LJ COUPE, PHOENIX LJ 5-DR. HATCHBACK

GROUP FEATURES (Select group for you)

	GROUP 1	GROUP 2	GROUP 3
Air conditioning, custom	X ₁	X ₁	X ₁
Belts, custom color-keyed		X ₂	X ₂
Cargo cover, removable	X ₃	X ₃	X ₃
Clock, electric quartz		X	X
Cruise control, resume-speed			X ₄
Exterior group, custom		X ₅	X ₅
Glass, all windows Soft Ray	X	X	X
Lamp group			X ₆
Mats, front/rear, floor		X	X
Mirrors, sport—LH remote, RH man. convex		X ₇	X ₇
Power disc brakes, front	X ₈	X ₈	X ₈
Power door locks			X
Power steering	X ₉	X ₉	X ₉
Power windows			X
Radio, Delco-GM AM/FM stereo			X ₁₀
Steering wheel, tilt			X
Transmission, automatic	X	X	X
Wheel covers, deluxe	X ₁₁	X ₁₁	X ₁₁
Windshield wipers, controlled cycle			X

- 1—Requires power brakes and power steering; not available with light trailer group.
 2—Standard Phoenix LJ and luxury trims.
 3—Optional Phoenix 5-dr. Hatchback only; standard Phoenix LJ 5-dr. Hatchback and luxury trims; required with dual rear speakers.
 4—Optional w/automatic trans. only—required w/power brakes.
 5—Not available LJ or SJ Option—includes hood mldg. and hood ornament, deck lid lock cover, roof drip mldg., rocker panel mldg. (Coupe), wheel opening mldg. (Coupe), pillar applique.
 6—Includes luggage, glove box, ash tray, LP, courtesy lamps and tone generator warning (seat belts, keys, headlamps).
 7—Standard SJ Option—required w/specific two-tones; required w/vinyl sport stripes.
 8—Required w/air cond.; required w/V-6 engine; required w/cruise control, w/L4 4-cylinder engine; required w/console, w/L4 4-cylinder engine less air conditioning.
 9—Required w/air cond.; required w/V-6 engine w/automatic trans.; required w/P205 tires, required w/SJ Option.
 10—Required cargo cover on Phoenix 5-dr. Hatchback only.
 11—Standard Phoenix LJ.

OTHER FEATURES (cont.)

	Phoenix	Phoenix LJ
Deck lid release, remote control (Coupes only)	A	A
Defroster, electric rear window	A	A
Gages, rally & dock inc. trip odometer	A	A
Gages, rally, dock and LP tach. inc. trip odometer	A	A
Guards, door edge	A	A
Horns, dual	A	S
Insulation, additional acoustical	A	S
Lamp, dome reading	A	A
Luggage carrier	A	A
Load floor carpeting (Hatchback)	S	S
Mirror, LH remote control, chrome	A	A
Mirrors, sport—LH remote, RH remote convex	A	A
Mirror, visor vanity RH	A	A
Molding, body side	A	A
Moldings, rocker panel (Coupes only)	A	S
Moldings, roof drip	A	S
Moldings, wheel opening (Coupes only)	A	S
Molding, windsplit and stand-up hood ornament	A	S
Power antenna	A	A
Power seat, driver	A	A
Radiator, heavy-duty	A	A
Radio, Delco-GM AM/FM	A	A
Radio, Delco-GM AM/FM stereo & cassette tape player	A	A
Radio, Delco-GM AM/FM stereo & stereo 8-track tape player	A	A
Radio speaker, rear	A	A
Radio speakers, dual front & rear	A	A
Seat, bucket	A	A
Seat, luxury notchback bench	A	S
Seat, reclining driver	A	A
Seat, reclining passenger	A	A
Seats, reclining driver, passenger	A	A
Shock absorbers, Superlift	A	A
Single rectangular headlamps	S	S
SJ appearance option	A	—
SJ Option	A	—
Spoiler, rear deck—SJ Coupe only—inc. front air dams	A	—
Springs, load carrying	A	A
Steering column smart switch	S	S
Steering wheel, custom sport	A	A
Steering wheel, luxury cushion	A	S
Stripes, paint	A	A
Stripes, sport vinyl	A	—
Sunroof removable	A	A
Top, padded landau (Coupes only)	A	A
Trailer group, light	A	A
Two-tones, specific	A	A

TIRES

	Phoenix	Phoenix LJ
P185/80R13 blackwall fiberglass-belted	S	S
P185/80R13 whitewall fiberglass-belted	A	A
P185/80R13 whitewall steel-belted	A	A
P205/70R13 blackwall steel-belted	A	—
P205/70R13 whitewall steel-belted	A	—
P205/70R13 white lettered steel-belted	A	—
Puncture sealant (with P185/80R13 whitewall steel-belted tires only)	A	A

WHEELS

Cast aluminum	A	A
Rally (standard SJ Option)	A	A
Rally IV	A	A
Rally IV body-color	A	A
Wheel covers, deluxe	A	S
Wheel covers, wire	A	A
Wire wheel cover locking package	A	A

DIMENSIONS

	Phoenix, Phoenix LJ Coupe		Phoenix, Phoenix LJ 5-Dr. Hatchback	
	Mm.	In.	Mm.	In.
Overall length	4626	182.1	4555	179.3
Overall width	1754	69.1	1768	69.6
Wheelbase	2664	104.9	2664	104.9
Tread (front/rear)	1492/1447	58.7/57.0	1492/1447	58.7/57.0
Head room (front/rear)	968/957	38.1/37.7	970/951	38.2/37.4
Leg room (front/rear)	1073/876	42.2/34.5	1073/902	42.2/35.5
Shoulder room (front/rear)	1428/1430	56.2/56.3	1422/1424	56.0/56.1
Hip room (front/rear)	1385/1360	54.5/53.5	1385/1406	54.5/55.4
Trunk capacity (liters/cu. ft.)	392.8	13.9		
Cargo volume (liters/cu. ft.)			1170*	41.3*
Fuel tank capacity (liters/gallons)	52.3	14	52.3	14

*Rear seat folded down.
 Published dimensions are for a base automobile without optional equipment or accessories. Additional accessories or equipment ordered at the customer's option can result in a minor change in these dimensions.

ENGINES* AND EPA

	Phoenix, Phoenix LJ			
	Hwy. Est.	Fed. EPA Est. MPG	Hwy. Est.	Cal. EPA Est. MPG
2.5 Liter L4 4-Cyl. 28Bbl. P**	S 35	(22)	S 35	(22)
2.8 Liter V-6 28Bbl. C**	A 34	(21)	A 34	(20)

*Equipped with GM Computer Command Control.
 **Produced by GM: P—Pontiac, C—Chevrolet.

OTHER FEATURES

	Phoenix	Phoenix LJ
Alternator, heavy-duty 70 amp	A	A
Antenna, windshield embedded	A	A
Battery, heavy-duty	A	A
Bumper guards, front	A	A
Bumper guards, rear	A	A
Bumper rub strips, front and rear	S	S
Bumper, urethane body-color, front and rear	S	S
Console, floor	A	A

S=Standard A=Available —=Not Available

FIREBIRD FACTS & FIGURES

FIREBIRD, ESPRIT, FORMULA, TRANS AM

GROUP FEATURES (Select group for you)

	GROUP 1	GROUP 2	GROUP 3
Air conditioning, custom	X ₁	X ₁	X ₁
Belts, custom color-keyed		X ₂	X ₂
Clock, electric quartz		X ₃	X ₃
Cruise control, resume-speed			X ₄
Glass, all windows Soft Ray	X	X	X
Lamp group		X ₅	X ₅
Mats, front and rear floor		X ₆	X ₆
Mirrors, sport—LH remote, RH man. convex	X ₇	X ₇	X ₇
Moldings, roof drip	X ₈	X ₈	X ₈
Power door locks			X
Power windows		X	X
Radio, Delco-GM AM	X		
Radio, Delco-GM AM/FM stereo		X	X
Steering wheel, tilt		X	X
Transmission, automatic	X ₉	X ₉	X ₉
Wheel covers, deluxe	X ₉		
Wheels, Rally II		X ₁₀	X ₁₀
Windshield wipers, controlled cycle			X

- 1—Not available with 3-spd. manual transmission.
 2—Standard Esprit and with custom trim.
 3—Not available with ETR stereo radio; standard Formula, Trans Am.
 4—Optional with automatic transmission.
 5—Includes luggage, glove box, LP courtesy lamps and tone generator warning (seat belts, keys, headlamps).
 6—Not available with turbo engine on Trans Am, Formula; not available with 3-spd. manual transmission.
 7—Standard Esprit, Formula and Trans Am.
 8—Standard Esprit; not available with Black Special Edition.
 9—Standard Esprit; not available Formula and Trans Am.
 10—Standard Formula and Trans Am; not available special performance package; not available with 3-speed manual transmission.

S=Standard A=Available —=Not Available

OTHER FEATURES

	Firebird	Esprit	Formula	Trans Am
Alternator, heavy-duty 70 amp	A	A	A	A
Appearance package, Formula	—	—	A	—
Axle, limited slip differential	A	A	A	A
Battery, heavy-duty	A	A	A	A
Column-mounted dimmer switch	S	S	S	S
Console	S	S	S	S
Defroster, electric rear window	A	A	A	A
Deck lid release, remote control	A	A	A	A
Door handle tape inserts—body-color	—	S	A	A
Dual rectangular headlamps	S	S	S	S
Gages, rally & clock	A	A	S	—
Gages, rally, clock & LP tach	A	A	A	S
Guards, door edge	A	A	A	A
Hatch roof, removable	A	A	A	A
Headlamps, tungsten quartz halogen	A	A	A	A

OTHER FEATURES (cont.)

	Firebird	Esprit	Formula	Trans Am
Hood scoops—simulated	—	—	S	—
Hood, shaker	—	—	—	S
LP assist strap	—	S	A	A
LP trim plate, woodgrain	S	S	—	—
LP trim plate, engine turned—bright	—	—	S	S
Insulation, additional acoustical	A	S	A	A
Lamp, dome reading	A	A	A	A
Mirror, visor vanity RH	A	A	A	A
Moldings, body side	A	A	A	A
Molding, hood rear edge—bright	A	S	A	S
Moldings, rocker panel	A	S	—	—
Moldings, wheel opening	A	S	—	—
Moldings, windowsill	A	S	A	A
Power antenna	A	A	A	A
Power antenna, AM/FM/CB tri-band	A	A	A	A
Power disc brakes, front & rear	—	—	A	A
Radio, Delco-GM AM/FM	A	A	A	A
Radio, Delco-GM AM/FM stereo & cassette tape player	A	A	A	A
Radio, Delco-GM AM/FM ETR stereo & cassette tape player	A	A	A	A
Radio, Delco-GM AM/FM ETR stereo w/seek & scan	A	A	A	A
Radio, Delco-GM AM & stereo 8-track tape player	A	A	A	A
Radio, Delco-GM AM/FM stereo & stereo 8-track tape player	A	A	A	A
Radio, Delco-GM AM/FM stereo w/40-channel CB	A	A	A	A
Radio speaker, rear	A	A	A	A
Radio speakers, dual front & rear	A	A	A	A
Radio speakers, dual front	A	A	A	A
Radio speakers, dual rear extended range	A	A	A	A
Radio audio power booster	A	A	A	A
Seats, custom bucket	—	S	A	A
Special Edition Black Trans Am (w/hatch roof)	—	—	—	A
Special performance package	—	—	A	A
Spoiler, rear deck	A	A	S	S
Steering wheel, Formula	—	—	S	S
Steering wheel, luxury custom	A	S	—	—
Stripes, vinyl	A	A	A	—
Transmission, 4-speed manual (available with 5.0 liter V-8 engine only)	—	—	A	A

TIRES

205/75R15 blackwall steel-belted	S	S	—	—
205/75R15 whitewall steel-belted	A	A	—	—
225/70R15 blackwall steel-belted	—	—	S	S
225/70R15 white lettered steel-belted	—	—	A	A

WHEELS

	Firebird	Esprit	Formula	Trans Am
Cast aluminum (silver, gold)	A	A	A	A
Rally II	A	A	S	S
Rally II body-color	A	A	A	A
Turbo cast aluminum (silver, gold)	—	—	A	A
Wheel covers, deluxe	A	S	—	—
Wheel covers, wire	A	A	—	—
Wire wheel cover locking package	A	A	—	—

DIMENSIONS

Firebird, Firebird Esprit, Formula, Trans Am

	Mm.	In.
Overall length	5031	198.1
Overall width	1654	73.0
Wheelbase	2748	108.2
Tread, front	1557	61.3
Tread, rear	1524	60.0
Head room, front	937	37.2
Head room, rear	907	35.7
Leg room, front	1115	43.9
Leg room, rear	721	28.4
Shoulder room, front	1458	56.4
Shoulder room, rear	1382	54.4
Hip room, front	1405	55.3
Hip room, rear	1176	46.3
Trunk cargo capacity (liters/cu. ft.)	260.5	9.2
Fuel tank capacity (liters/gallons)	79.5	21.0

Published dimensions are for a base automobile without optional equipment or accessories. Additional accessories or equipment ordered at the customer's option can result in a minor change in these dimensions.

ENGINES* & EPA

		Firebird & Firebird Esprit		Formula		Trans Am	
		Hwy Est.	EPA Est. MPG	Hwy Est.	EPA Est. MPG	Hwy Est.	EPA Est. MPG
3.8 Liter V-6 2 Bbl. B**	Fed.	S †	†	—	—	—	—
	Cal.	S 29	(20)	—	—	—	—
4.3 Liter V-8 2 Bbl. P**	Fed.	A 27	(18)	S 27	(18)	—	—
	Cal.	A 27	(18)	S 27	(18)	—	—
4.9 Liter V-8 4 Bbl. P**	Fed.	A †	†	A †	†	S †	†
	Cal.	A †	†	A †	†	S †	†
4.9 Liter V-8 4 Bbl. Turbo(1) P**	Fed.	—	—	A †	†	A †	†
	Cal.	—	—	A †	†	A †	†
5.0 Liter V-8 4 Bbl. C,D**	Fed.	—	—	A †	†	A †	†
	Cal.	—	—	A †	†	A †	†

*Equipped with GM Computer Command Control.

**Produced by GM: B—Buick, P—Pontiac, C—Chevrolet, D—GM of Canada.

NOTE: Pontiac-built V-8 engines are available at start of production until approximately January 1, 1991. Check with your Pontiac dealer for current engine availability on all Firebird models.

(1)—Requires optional air conditioning.

†Please refer to enclosed information sheet for mileage figure.

PONTIAC FACTS & FIGURES

CATALINA, BONNEVILLE, BONNEVILLE BROUGHAM COUPES, SEDANS

GROUP FEATURES (Select group for you)

	GROUP 1	GROUP 2	GROUP 3
Air conditioning, custom	X ₁	X ₁	X ₁
Belts, custom color-keyed	X ₂	X ₂	X ₂
Clock, electric quartz		X ₃	X ₃
Cruise control, resume-speed		X	X
Deck lid release, remote control			X
Glass, all windows Soft Ray	X	X	X
Lamp group		X ₄	X ₄
Mats, front & rear floor		X	X
Mirrors, sport—LH remote, RH man. convex		X ₅	X ₅
Power door locks			X
Power seat, driver			X
Power windows		X ₂	X ₂
Radio, Delco-GM AM	X		
Radio, Delco-GM AM/FM stereo		X	X
Steering wheel, luxury cushion		X ₂	X ₂
Steering wheel, tilt		X ₆	X ₆
Transmission, 3-spd. automatic	X ₇	X ₇	X ₇
Wheel covers, deluxe	X ₈		
Wheel covers, wire		X	X
Windshield wipers, controlled cycle			X

- 1—Required w/optional diesel V-8 engine.
 2—Standard Bonneville Brougham.
 3—Standard Bonneville Brougham exc. with diesel engine; not available with ETR stereo radio; with diesel engine or with instrument panel and fuel economy gages.
 4—Includes rear door lamp switch (Catalina Sedans only), luggage (standard Bonneville Brougham) and L.P. courtesy lamps, and tone generator—standard Bonneville Brougham—(seat belts, keys, headlamps).
 5—Required w/specific two-tone colors.
 6—Optional w/luxury cushion or custom sport steering wheels only.
 7—Not available with optional 5.0 liter V-8 engine.
 8—Standard Bonneville & Bonneville Brougham.

S=Standard A=Available —=Not Available

OTHER FEATURES

	Catalina	Bonneville	Bonneville Brougham
Air conditioning, auto. climate control	A	A	A
Alternator, heavy-duty 70 amp	A	A	A
Axle, limited slip differential	A	A	A
Battery, heavy-duty	A	A	A
Bumper guards, front	A	A	A
Bumper rub strips, front	S	S	S
Bumper rub strips, rear	S	S	S
Clock, digital quartz	A	A	A
Column-mounted dimmer switch	S	S	S
Defroster, electric rear window	A	A	A
Gages, instrument panel & fuel economy ind.	A	A	A
Gages, rally & clock	A	A	A
Guards, door edge	A	A	A
Headlamps, tungsten quartz halogen	A	A	A
Insulation, additional acoustical	A	S	S
Lamp, dome reading	A	A	A

OTHER FEATURES (cont.)

	Catalina	Bonneville	Bonneville Brougham
Lamp, door courtesy	—	A	A
Lamps, cornering	A	A	A
Mirror, LH remote control chrome	A	A	S
Mirrors, LH power, RH power convex chrome	A	A	A
Mirrors, sport—LH remote control, RH remote convex	A	A	A
Mirror, illuminated visor RH	A	A	A
Mirror, visor vanity RH	A	A	S
Molding, body side	A	A	A
Moldings, wide rocker panel with front and rear extensions	—	S	S
Moldings, windowsill	A	A	S
Molding, windsplit and standup hood ornament	S	S	S
Power antenna, automatic	A	A	A
Power antenna, AM/FM/CB tri-band	A	A	A
Power 60/40 seat, driver & passenger	—	A	A
Radio, Delco-GM AM/FM	A	A	A
Radio, Delco-GM AM/FM stereo & cassette tape player	A	A	A
Radio, Delco-GM AM/FM ETR stereo w/seek & scan	A	A	A
Radio, Delco-GM AM & stereo 8-track tape player	A	A	A
Radio, Delco-GM AM/FM stereo & 8-track tape player	A	A	A
Radio, Delco-GM AM/FM stereo w/40-channel CB	A	A	A
Radio speaker, rear	A	A	A
Radio speakers, dual rear	A	A	A
Radio speakers, dual rear extended range	A	A	A
Rally handling suspension (w/P215/75R15 tires only)	A	A	A
Rear wheel opening cover	—	S	S
Seat, buckets (Coupes only)	—	A	—
Seat, reclining passenger	—	A	A
Seat, 60/40, with fold-down center armrest	—	A	S
Seats, leather	—	A	A
Shock absorbers, auto. level	A	A	A
Shock absorbers, Superlift	A	A	A
Springs, load carrying	A	A	A
Steering wheel, custom sport	A	A	A
Stripes, lower accent	—	A	A
Stripes, paint	A	A	A
Sunroof, power glass (silver, gold, gray)	A	A	A
Sunroof, power metal	A	A	A
Top, padded landau (Coupes only)	A	A	A
Top, full vinyl top (4-Dr. Sedans only)	A	A	A
Transmission, automatic w/overdrive (w/5.0 liter V-8 engine only)	A	A	A
Trailer group, light	A	A	A
Trailer group, medium	A	A	A
Trim, luggage compartment	A	A	A
Two-tones specific	A	A	A

TIRES

	Catalina	Bonneville	Bonneville Brougham
P205/75R15 blackwall steel-belted radial	S	S	S
P205/75R15 whitewall steel-belted radial	A	A	A
P215/75R15 whitewall steel-belted radial	A	A	A
Puncture sealant (P215/75R15 tires only)	A	A	A

WHEELS

	A	A	A
Cast aluminum	A	A	A
Rally II	A	A	A
Rally II body-color	A	A	A
Wheel covers, custom	A	A	A
Wheel covers, deluxe	A	S	S
Wheel covers, wire	A	A	A
Wire wheel cover locking package	A	A	A

DIMENSIONS

	Catalina, Bonneville, Bonneville Brougham			
	Coupes		Sedans	
	Mm.	In.	Mm.	In.
Overall length	5434	213.9	5434	213.9
Overall width	1940	76.4	1940	76.4
Wheelbase	2945	116.0	2945	116.0
Tread (front/rear)	1568/1542	61.7/60.7	1568/1542	61.7/60.7
Head room (front/rear)	985/974	38.0/38.4	1003/971	39.5/38.2
Leg room (front/rear)	1072/972	42.2/38.3	1072/992	42.2/39.1
Shoulder room (front/rear)	1543/1516	60.8/60.9	1544/1547	60.8/60.9
Hip room (front/rear)	1398/1471	55.0/57.9	1398/1405	55.0/55.3
Trunk capacity (liters/cu. ft.)	589.1	20.8	589.1	20.8
Fuel tank capacity (liters/gallons)	94.6	25.0*	94.6	25.0*

*27 gallon (102 liters) fuel tank capacity with optional Diesel engine.
 Published dimensions are for a base automobile without optional equipment or accessories. Additional accessories or equipment ordered at the customer's option can result in a minor change in these dimensions.

ENGINES & EPA

	Catalina, Bonneville, Bonneville Brougham			
	Hwy. Est.	Fed. EPA Est. MPG	Hwy. Est.	Cal. EPA Est. MPG
3.8 Liter* V-6 2 Bbl. B**	S †	†	S 30	(20)
4.3 Liter* V-6 2 Bbl. P**	A 27	(18)	A 27	(18)
5.0 Liter* V-8 4 Bbl. (1) O**	A 28	(17)	A 28	(17)
5.7 Liter V-8 Diesel (2) O**	A 33	(21)	A 32	(21)

(1) Requires automatic w/overdrive transmission; optional air conditioning.

(2) Optional air conditioning required.

*Equipped with GM Computer Command Control.

**Produced by GM: B—Buick, P—Pontiac, O—Oldsmobile.

NOTE: Pontiac-built V-8 engine is available at start of production until approximately January 1, 1981. Check with your Pontiac dealer for current engine availability on all Pontiac models.

†Please refer to enclosed information sheet for mileage figure.

LE MANS FACTS & FIGURES

LE MANS, GRAND LE MANS, COUPES, SEDANS

GROUP FEATURES (Select group for you)

	GROUP 1	GROUP 2	GROUP 3
Air conditioning, custom	X	X	X
Belts, custom color-keyed	X ₁	X ₁	X ₁
Clock, electric quartz		X ₃	X ₃
Cruise control, resume-speed			X ₃
Exterior group, custom		X ₄	X ₄
Glass, all windows Soft Ray	X	X	X
Lamp group		X ₃	X ₃
Mats, front/rear, floor		X	X
Mirrors, sport — LH remote, RH man. convex		X ₆	X ₆
Power door locks			X
Power windows			X
Radio, Delco-GM AM	X	X	
Radio, Delco-GM AM/FM stereo			X
Steering wheel, luxury cushion		X ₇	X ₇
Steering wheel, tilt			X ₈
Transmission, automatic	X	X	X
Wheel covers, deluxe	X	X	X

1—Included w/luxury trim.

2—Not available w/rally gages or ETR stereo radio.

3—Optional w/automatic transmission only.

4—Optional LeMans only—includes rocker panel, window sill, side window reveal (Sedans only) moldings.

5—Includes rear door lamp switch (Sedans only), luggage, glove box, ash tray, I.P. courtesy lamps & tone generator warning (seat belts, keys, headlamps).

6—Required w/specific two-tone.

7—Standard Grand LeMans.

8—Optional w/luxury cushion or custom sport steering wheels and automatic transmission only.

S=Standard A=Available —=Not Available

OTHER FEATURES

	LeMans	Grand LeMans
Air conditioning, auto. climate control	A	A
Alternator, heavy-duty 70 amp	A	A
Axle, limited slip differential	A	A
Battery, heavy-duty	A	A
Bumper guards, front/rear	A	A
Bumper rub strips, front	S	S
Bumper rub strips, rear	S	S
Clock, digital quartz	A	A
Column-mounted dimmer switch	S	S
Console, floor (optional with bucket seats, lamp group required)	—	A
Deck lid release, remote control	A	A
Defroster, electric rear window	A	A
Dual rectangular headlamps	S	S
Gages, instrument panel (includes trip odometer)	A	A
Gages, rally & I.P. tach (includes trip odometer)	A	A
Guards, door edge	A	A
Horns, dual	A	S
Insulation, additional acoustical	A	S

OTHER FEATURES (cont.)

	LeMans	Grand LeMans
Lamp, dome reading	A	A
Mirror, LH remote control chrome	A	A
Mirrors, sport — LH remote, RH remote convex	A	A
Mirror, illuminated visor RH	A	A
Mirror, visor vanity RH	A	A
Moldings, body side	A	A
Moldings, rocker panel	A	S
Moldings, roof drip	S	S
Moldings, side window reveal (Sedans only)	A	S
Moldings, window sill	A	A
Moldings, windsplit and stand-up hood ornament	S	S
Power antenna, automatic	A	A
Power antenna, AM/FM/CB tri-band	A	A
Power seat, driver	A	A
Radio, Delco-GM AM/FM	A	A
Radio, Delco-GM AM/FM stereo & cassette tape player	A	A
Radio, Delco-GM AM/FM ETR stereo w/seek & scan	A	A
Radio, Delco-GM AM & stereo 8-track tape player	A	A
Radio, Delco-GM AM/FM stereo & stereo 8-track tape player	A	A
Radio, Delco-GM AM/FM stereo w/40-channel CB	A	A
Radio speaker, rear	A	A
Radio speakers, dual front & rear	A	A
Radio speakers, dual front	A	A
Radio speakers, dual rear extended range	A	A
Seats, bucket	—	A
Seat, reclining passenger	A	A
Springs, load carrying	A	A
Steering wheel, custom sport	A	A
Sunroof, power glass (Coupes only)	A	A
Sunroof, power metal (Coupes only)	A	A
Stripes, paint	A	A
Top, full vinyl (Sedans only)	A	A
Trailer group, light	A	A
Trim, luxury group	—	A
Two-tones, specific	A	A
Windshield wipers, controlled cycle	A	A

WHEELS

Cast aluminum (silver, gold)	A	A
Rally IV	A	A
Wheel covers, custom	A	A
Wheel covers, deluxe	A	A
Wheel covers, wire	A	A
Wire wheel cover locking package	A	A

TIRES

	LeMans	Grand LeMans
185/75R14 blackwall fiberglass-belted radial (six-cylinder engines only)	S	S
185/75R14 whitewall fiberglass-belted radial (six-cylinder engine only)	A	A
195/75R14 whitewall fiberglass-belted radial	A	A
195/75R14 whitewall steel-belted radial	A	A
205/70R14 whitewall steel-belted radial (inc. rally handling suspension)	A	A
205/70R14 white lettered steel-belted (inc. rally handling suspension)	A	A
205/75R14 whitewall steel-belted	A	A
Puncture sealant (with 195/75R14 whitewall steel-belted tires only)	A	A

DIMENSIONS

	LeMans, Grand LeMans Coupes		LeMans, Grand LeMans Sedans	
	Mm.	In.	Mm.	In.
Overall length	5041	198.6	5041	198.6
Overall width	1810	71.3	1810	71.3
Wheelbase	2745	108.1	2745	108.1
Tread (front/rear)	1486/1467	58.5/57.8	1486/1467	58.5/57.8
Head room (front/rear)	962/961	37.9/37.8	983/957	38.7/37.7
Leg room (front/rear)	1086/892	42.8/35.1	1086/965	42.8/38.0
Shoulder room (front/rear)	1442/1411	56.8/55.6	1451/1450	57.1/57.1
Hip room (front/rear)	1313/1384	51.7/54.5	1326/1412	52.2/55.6
Trunk capacity (liters/cu. ft.)	469.3	16.6	469.3	16.6
Fuel tank capacity (liters/gallons)	68.5	18.1	68.5	18.1

Published dimensions are for a base automobile without optional equipment or accessories. Additional accessories or equipment ordered at the customer's option can result in a minor change in these dimensions.

ENGINES* & EPA

	LeMans, Grand LeMans (Coupes, Sedans)			
	Fed.		Cal.	
	Hwy. Est.	EPA Est. MPG	Hwy. Est.	EPA Est. MPG
3.8 Liter V-6 2 Bbl.B**	530	(21)	#5 29	(20)
4.3 Liter V-8 2 Bbl.P**	A 28	(19)	A 28	(19)

*Equipped with GM Computer Command Control.

**Produced by GM: B—Buick, P—Pontiac.

#Automatic transmission required.

NOTE: Pontiac-built V-8 engine is available at start of production until approximately January 1, 1981. Check with your Pontiac dealer for current engine availability on all LeMans and Grand LeMans models.

PONTIAC SAFARI FACTS & FIGURES

CATALINA SAFARI, BONNEVILLE SAFARI

GROUP FEATURES (Select group for you)

	GROUP 1	GROUP 2	GROUP 3
Air conditioning, custom	X ₁	X ₁	X ₁
Belts, custom color-keyed	X ₂	X ₂	X ₂
Clock, electric quartz		X ₃	X ₃
Cruise control, resume-speed		X	X
Glass, all windows Salt Ray	X	X	X
Lamp group		X ₄	X ₄
Mats, front/rear, floor		X	X
Mirrors, sport—LH remote, RH manual convex		X ₅	X ₅
Power door locks			X
Power seat, driver			X
Power windows		X	X
Radio, Delco-GM radio	X		
Radio, Delco-GM AM/FM stereo		X	X
Steering wheel, luxury cushion		X	X
Steering wheel, tilt		X ₆	X ₆
Wheel covers, deluxe	X ₇		
Wheel covers, wire		X	X
Windshield wipers, controlled cycle			X

1—Required with diesel engine.

2—Included with extra cost trim.

3—Not available with Delco-GM ETR stereo radio or with diesel engine.

4—Includes rear door lamp switch, rear compartment and LP courtesy lamps, tone generator (seat belts, keys, headlamps).

5—Required with specific two-tones on Bonneville Safaris only.

6—Optional with luxury cushion or custom sport steering wheels only.

7—Standard Bonneville Safaris.

S=Standard **A=Available** **= Not Available**

OTHER FEATURES

	Catalina, Bonneville Safari
Air conditioning, auto, climate control	A
Alternator, heavy-duty 70 amp.	A
Axle, limited slip differential	A
Battery, heavy-duty	A
Bumper guards, front & rear	A
Carpet, load floor (standard Bonneville)	A
Carpet, load floor & sidewall	A
Clock, digital quartz	A
Defroster, electric rear window	A
Gages, instrument panel	A
Gages, rally & clock	A

OTHER FEATURES (cont.)

	Catalina, Bonneville Safari
Headlamps, tungsten quartz halogen	A
Insulation, additional acoustical (standard Bonneville)	A
Lamp, dome reading	A
Lamp, door courtesy (not available Catalina)	A
Lamps, cornering	A
Luggage carrier	A
Mirror, LH remote control chrome (standard Bonneville)	A
Mirrors, LH power, RH power convex	A
Mirrors, sport—LH remote, RH remote convex	A
Mirror, illuminated visor RH	A
Mirror, visor vanity RH	A
Moldings, body side	A
Moldings, side window reveal	S
Moldings, windowsill	A
Power antenna, automatic	A
Power antenna, AM/FM/CB tri-band	A
Power door lock, tailgate only (included with power door locks)	A
Power seat, driver	A
Power 60/40 seat, driver & passenger	A
Radio, Delco-GM AM/FM	A
Radio, Delco-GM AM/FM stereo & cassette tape player	A
Radio, Delco-GM AM/FM ETR stereo w/seek & scan	A
Radio, Delco-GM AM & stereo 8-track tape player	A
Radio, Delco-GM AM/FM stereo & stereo 8-track tape player	A
Radio speaker, rear	A
Radio speakers, dual rear	A
Rally handling suspension	A
Seat, reclining passenger	A
Seat, third (includes rear bumper step)	A
Shock absorbers, Superlift	A
Shock absorbers, automatic level	A
Springs, load carrying	A
Steering wheel, custom sport	A
Stripes, paint (not available Bonneville)	A
Trailer group, light	A
Trailer group, medium	A
Transmission, automatic with overdrive (w/std. 5.0 liter V-8 engine only)	S
Two-tone paint (available Bonneville only. Replaces woodgrain siding at no charge—requires sport mirrors)	A

TIRES

P225/75R15 blackwall steel-belted radial	S
P225/75R15 whitewall steel-belted radial	A
Puncture sealant (P225/75R15 whitewall steel-belted radials only)	A

WHEELS

	Catalina, Bonneville Safari
Cast aluminum	A
Rally II	A
Rally II body-color	A
Wheel covers, custom	A
Wheel covers, deluxe (standard Bonneville)	A
Wheel covers, wire	A
Wire wheel cover locking package	A

DIMENSIONS

	Catalina, Bonneville Safari	
	MM.	In.
Overall length	5505	216.7
Overall width	1916	75.4
Wheelbase	2945	116.0
Tread (front/rear)	1578/1628	62.1/64.1
Head room (front/rear)	1005/999	39.7/39.3
Leg room (front/rear)	1072/959	42.2/37.8
Shoulder room (front/rear)	1544/1548	60.8/60.9
Hip room (front/rear)	1400/1398	55.1/55.0
Length of cargo space at floor with tailgate down	2790	110.0
Top of front seatback to closed tailgate	2129	83.8
Minimum distance between wheelhouses at floor	1224	48.2
Rear-end opening width at belt	1224	48.2
Maximum cargo height	755	29.7
Cargo volume (liters/cu. ft.)	2488*	87.9*
Fuel tank capacity (liters/gallons)	83.3**	22.0**

*Rear seat folded down.

**Same size fuel tank with optional Diesel V-8 engine.

Published dimensions are for a base automobile without optional equipment or accessories. Additional accessories or equipment ordered at the customer's option can result in a minor change in these dimensions.

ENGINES & EPA

	Catalina, Bonneville Safari			
	Fed.		Cal.	
	Hwy. Est.	EPA Est. MPG	Hwy. Est.	EPA Est. MPG
5.0 Liter* V-6 4 Bbl.(1) O**	S 28	(16)	S 26	(15)
5.7 Liter V-6 Diesel(1) O**	A 33	(21)	A 32	(21)

*Equipped with GM Computer Command Control.

**Produced by GM: O—Oldsmobile.

(1) Optional air conditioning required.

LE MANS SAFARI FACTS & FIGURES

LE MANS SAFARI, GRAND LE MANS SAFARI

GROUP FEATURES (Select group for you)

	GROUP 1	GROUP 2	GROUP 3
Air conditioning, custom	X	X	X
Belts, custom color-keyed	X ₁	X ₁	X ₁
Clock, electric quartz		X ₂	X ₂
Cruise control, resume-speed			X
Exterior group, custom		X ₃	X ₃
Glass, all windows Soft Ray	X	X	X
Lamp group		X ₄	X ₄
Mats, front/rear, floor		X	X
Mirrors, sport — LH remote, RH manual convex		X ₅	X ₅
Power door locks			X
Radio, Delco-GM AM	X	X	
Radio, Delco-GM AM/FM stereo			X
Steering wheel, luxury cushion		X ₆	X ₆
Steering wheel, tilt			X ₇
Transmission, automatic	X ₈	X ₈	X ₈
Wheel covers, deluxe	X	X	X

1—Included with custom trim.

2—Not available with rally gages or Delco-GM ETR stereo radio.

3—Optional LeMans Safari only—includes rocker panel, window sill and side window reveal moldings.

4—Includes rear door light switch, rear compartment courtesy, glove box, ash tray, I.P. courtesy lamps and tone generator warning (seat belts, keys, headlamps).

5—Required with specific two-tone, or double two-tone or Grand LeMans Safari only.

6—Standard on Grand LeMans Safari.

7—Optional with luxury cushion steering wheel—LeMans Safari only—or custom sport steering wheel.

8—Standard on LeMans and Grand LeMans Safari.

S=Standard **A=Available** **=Not Available**

OTHER FEATURES

	LeMans, Grand LeMans Safari
Air conditioning, auto. climate control	A
Alternator, heavy-duty 70 amp.	A
Axle, limited slip differential	A
Battery, heavy-duty	A
Bumper guards, front & rear	A
Carpet, load floor (standard Grand LeMans)	A
Clock, digital quartz	A
Console, floor (optional with bucket seats; requires lamp group)	A
Deflector, rear window	A
Defroster, electric rear window	A
Gages, instrument panel	A

OTHER FEATURES (cont.)

	LeMans, Grand LeMans Safari
Gages, rally & I.P. tach	A
Guards, door edge (standard Grand LeMans with woodgrain siding)	A
Horns, dual (standard Grand LeMans)	A
Insulation, additional acoustical (standard Grand LeMans)	A
Lamp, dome reading	A
Luggage carrier	A
Mirror, LH remote control chrome	A
Mirrors, sport — LH remote, RH remote convex	A
Mirror, illuminated visor RH	A
Mirror, visor vanity RH	A
Moldings, body side	A
Moldings, rocker panel (standard Grand LeMans)	A
Moldings, side window reveal (standard Grand LeMans)	A
Moldings, window sill	A
Power antenna, automatic	A
Power antenna, AM/FM/CB tri-band	A
Power seat, driver	A
Power tailgate glass release	A
Radio, Delco-GM AM/FM	A
Radio, Delco-GM AM/FM stereo & cassette tape player	A
Radio, Delco-GM AM/FM ETR stereo w/seek & scan	A
Radio, Delco-GM AM & stereo 8-track tape player	A
Radio, Delco-GM AM/FM stereo & stereo 8-track tape player	A
Radio, Delco-GM AM/FM stereo w/40-channel CB	A
Radio speaker, rear	A
Radio speakers, dual front & rear	A
Rally handling suspension (includes larger size tires only)	A
Seats, bucket	A
Seat, reclining passenger	A
Security package	A
Springs, load carrying	A
Steering wheel, custom sport	A
Stripes, paint (not available Grand LeMans)	A
Trailer group, light	A
Two-tone, double paint (available Grand LeMans only. Replaces woodgrain siding & door edge guards at NO charge—requires sport mirrors)	A

WHEELS

Cast aluminum (silver, gold)	A
Rally IV	A
Wheel covers, custom	A
Wheel covers, deluxe	A
Wheel covers, wire	A
Wire wheel cover locking package	A

TIRES

	LeMans, Grand LeMans Safari
195/75R14 blackwall fiberglass-belted radial	S
195/75R14 whitewall fiberglass-belted radial	A
195/75R14 whitewall steel-belted radial	A
205/70R14 whitewall steel-belted radial (includes rally handling suspension)	A
205/70R14 white lettered steel-belted radial (includes rally handling suspension)	A
205/75R14 whitewall steel-belted radial	A
Puncture sealant, (195/75R14 whitewall steel-belted radials only)	A

DIMENSIONS

	LeMans, Grand LeMans Safari	
	mm.	in.
Overall length	5025	197.8
Overall width	1843	79.9
Wheelbase	2745	108.1
Tread (front/rear)	1486/1474	62.1/64.1
Head room (front/rear)	985/985	38.9/38.8
Leg room (front/rear)	1086/912	42.8/35.9
Shoulder room (front/rear)	1451/1450	57.1/57.1
Hip room (front/rear)	1326/1412	52.2/55.6
Length of cargo space at floor with tailgate down	2639	103.9
Top of front seatback to closed tailgate	1852	72.9
Minimum distance between wheelhouses at floor	1108	43.6
Rear-end opening width at belt	1312	51.6
Maximum cargo height	763	30.0
Cargo volume (liters/cu. ft.)	2049*	72.4*
Fuel tank capacity (liters/gallons)	68.9	18.2

*Rear seat folded down.

Published dimensions are for a base automobile without optional equipment or accessories. Additional accessories or equipment ordered at the customer's option can result in a minor change in these dimensions.

ENGINES* & EPA

	Fed.		Cal.	
	Hwy. Est.	EPA Est. MPG	Hwy. Est.	EPA Est. MPG
3.8 Liter V-6 2 Bbl. B**	S 30	(21)	S 29	(20)
4.3 Liter V-8 2 Bbl. P**	A 27	(18)	A 27	(18)
4.9 Liter V-8 4 Bbl. P**	A †	†	A †	†

*Equipped with GM Computer Command Control.

**Produced by GM: B—Buick, P—Pontiac.

NOTE: Pontiac-built V-8 engines are available at start of production until approximately January 1, 1981. Check with your Pontiac dealer for current engine availability on all Pontiac models.

†Please refer to enclosed information sheet for mileage figure.

STANDARD FEATURES ON ALL 1981 PONTIACS

SAFETY FEATURES

Occupant Protection

- Manual Lap Belts with Push-button Buckles for Rear and Center Front (when applicable) Passenger Positions
- Manual Lap/Shoulder Belts for Driver and Right Front Passenger
- Energy-absorbing Steering Column
- Passenger-guard Door Locks
- Safety Door Latches and Stamped Steel Hinges
- Folding Seatback Latches
- Energy-absorbing Padded Instrument Panel and Front Seatback Tops*
- Laminated Windshield/Tempered Side and Rear Glass
- Safety Armrests
- Identification Symbols for Controls and Displays
- Glove Box and Console Door Latch Impact Security

Accident Avoidance

- Parking Lamps that Illuminate with Headlamps
- Four-way Hazard Warning Flasher

*Including intermediate seatback tops on three-seat station wagons.

- Side Marker Lights and Reflectors
- Backup Lights
- Lane Change Feature in Direction Signal Control
- Windshield Defrosters, Washer and Dual-speed Wipers
- Vinyl-edged Wide-view Inside Mirror
- Outside Rearview Mirror
- Dual Master Cylinder Brake System with Warning Light
- Starter Safety Switch
- Dual-action Safety Hood Latches
- Self-adjusting Brakes
- Pressure Relief Gas Cap

Anti-Theft

- Anti-theft Ignition Key Reminder Buzzer
- Anti-theft Steering Column Lock

OTHER STANDARD FEATURES

- Body by Fisher
- Delco-GM Freedom® II Battery
- Heater/Defroster System
- Carburetor Air Preheater
- Evaporative Emission System
- Foam Seat Cushions
- Full-flow Oil Filter
- Labeled Instrument Panel Control Switches
- Radio Interference-suppression Ignition

- GM's Computer Command Control with Catalytic Converter (NA with optional diesel engine)
- On-board "check engine" light on instrument panel (NA with optional diesel engine)
- High-energy Ignition (NA with optional diesel engine)
- Speedometer graduated in Kilometers per Hour as well as Miles per Hour (odometer registers miles)

THE GM CONTINUOUS PROTECTION PLAN

The GM Continuous Protection Plan is now available to anyone purchasing a new Pontiac. It is one of the most extensive programs of its kind, providing added repair protection (over and above the usual Pontiac Limited Warranty) against the cost of UNEXPECTED REPAIRS plus reimbursement for towing expenses during and after the GM New Vehicle Limited Warranty period.

The Plan covers nine major assemblies (including engine, axles, factory air conditioning, even the electrical system) plus most seals and gaskets.

The Plan offers an allowance

toward the cost of a RENTAL VEHICLE should your car be inoperable and kept overnight for repairs (for any failure covered by the GM New Vehicle Limited Warranty or this plan).

The Plan also provides an allowance for TOWING or EMERGENCY ROAD SERVICE in the event any part covered by the Plan should fail—and during the New Vehicle Limited Warranty period if your car is disabled for any reason at all.

The GM Continuous Protection Plan lets you cancel within 60 days and receive a full REFUND, providing you have filed no claims under the Plan. Best of all, the GM Continuous Protection Plan is honored at participating Pontiac and other GM dealers across the country.

See your Pontiac dealer today for complete details and conditions of this exciting GM Protection Plan. (Available in United States and Canada only.)

A WORD ABOUT ENGINES:

Pontiacs are equipped with GM-built engines produced by various divisions. See your dealer for details.

A WORD ABOUT ASSEMBLY, COMPONENTS AND OPTIONAL EQUIPMENT IN THESE PONTIAC PRODUCTS.

The Pontiacs described in this brochure are assembled at facilities of General Motors Corporation operated by Pontiac, GM Assembly Division or GM of Canada. These vehicles incorporate thousands of different components produced by various divisions of General Motors and by various suppliers to General Motors. From time to time during the manufacturing process, it may be necessary, in order to meet public demand for particular vehicles or equipment, or to meet federally mandated emissions, safety and fuel economy requirements, or for other reasons, to produce Pontiac products with different components or differently sourced components than initially scheduled.

All such components have been approved for use in Pontiac products and will provide the quality performance associated with the Pontiac name.

With respect to extra cost optional equipment, make certain you specify the type of equipment you desire on your vehicle when ordering it from your dealer. Some options may be unavailable when your car is built. Your dealer receives advice regarding current availability of options. You may ask the dealer for this information. GM also requests the dealer to advise you if an option you ordered is unavailable. We suggest that you verify that your car includes the optional equipment you ordered or if there are changes, that they are acceptable to you.

1981 PONTIAC COLORS

11—WHITE

Available all Pontiac models.

Recommended interior colors: Black, Camel Tan, Blue, Beige, Champagne, Jadestone, Maroon, Red, Silver.

16—SILVER METALLIC

Available all Pontiac models.

Recommended interior colors: Black, Blue, Maroon, Silver, Red.

19—BLACK

Available all Pontiac models.

Recommended interior colors: Black, Beige, Camel Tan, Maroon, Silver.

20—BRIGHT BLUE METALLIC

Available all Firebirds except Formula with two-tone paint.
Recommended interior colors: Black, Blue.

21—LIGHT BLUE METALLIC

Available all Pontiac models except Formula with two-tone paint.
Recommended interior colors: Black, Blue.

Recommended interior colors: Black, Blue.

29—DARK BLUE METALLIC

Available all Pontiac models.

Recommended interior colors: Black, Camel Tan, Blue, Beige.

35—PASTEL CHAMPAGNE

Available all LeMans, LeMans Safari, Grand LeMans, Grand LeMans Safari, Grand Prix, Catalina, Catalina Safari, Bonneville, Bonneville Safari and Bonneville Brougham models.

Recommended interior color: Champagne.

36—CHAMPAGNE METALLIC

Available all Pontiac models except Firebird.

Recommended interior colors: Black, Beige, Champagne.

37—MEDIUM CHAMPAGNE METALLIC

Available as accent color only (with two-tone or double two-tone paint treatments) in combination with 36—Champagne Metallic only.

45—LIGHT JADESTONE METALLIC (Blue-Green)

Available all LeMans, LeMans Safari, Grand LeMans, Grand LeMans Safari, Grand Prix, Catalina, Catalina Safari, Bonneville, Bonneville Safari and Bonneville Brougham models.

Recommended interior color: Jadestone.

47—JADESTONE METALLIC (Blue-Green)

Available all LeMans, LeMans Safari, Grand LeMans, Grand LeMans Safari, Grand Prix, Catalina, Catalina Safari, Bonneville, Bonneville Safari and Bonneville Brougham models.

Recommended interior color: Jadestone.

48—DARK GREEN METALLIC

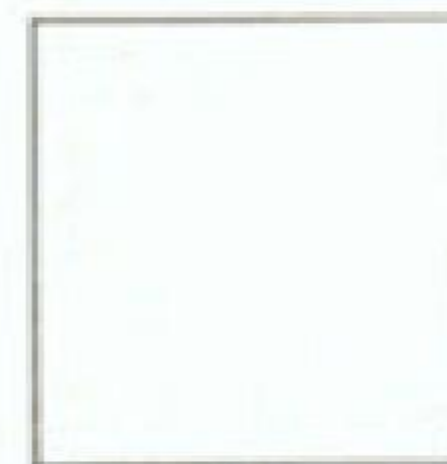
Available all Phoenix models.

Recommended interior colors: Black, Champagne.

51—BRIGHT YELLOW

Available all Phoenix and Firebird models except Formula and Trans Am.

Recommended interior colors: Black, Camel Tan.



11
White



16
Silver Metallic



19
Black



20
Bright Blue Metallic



21
Light Blue Metallic



29
Dark Blue Metallic



35
Pastel Champagne



36
Champagne Metallic



37
Medium Champagne Metallic



45
Light Jadestone Metallic (Blue-Green)



47
Jadestone Metallic (Blue-Green)



48
Dark Green Metallic



51
Bright Yellow



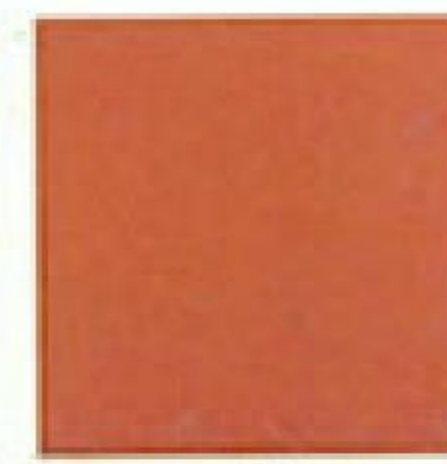
54
Gold Metallic



56
Yellow-Orange



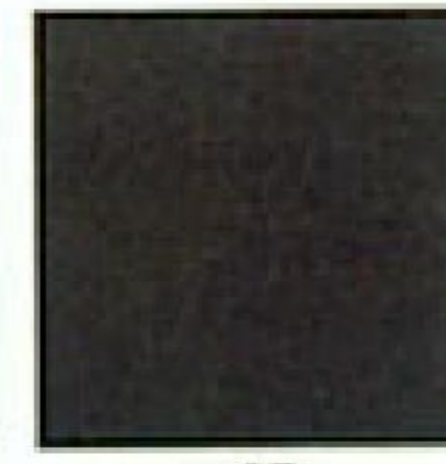
57
Orange Metallic



58
Burnt Orange Metallic



63
Medium Beige



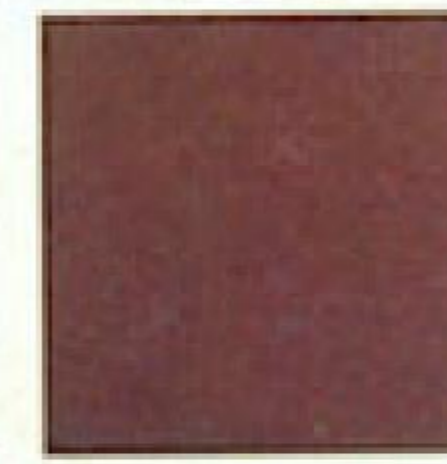
67
Dark Brown Metallic



68
Light Brown Metallic



69
Medium Brown Metallic



72
Medium Maroon Metallic



75
Bright Red



77
Dark Maroon Metallic



84
Dark Charcoal Metallic

54—GOLD METALLIC

Available all Firebird models except Formula with two-tone paint.

Recommended interior colors: Black, Camel Tan.

56—YELLOW-ORANGE

Available all Firebird models except Formula with two-tone paint.

Recommended interior color: Black.

57—ORANGE METALLIC

Available all Firebird models.

Recommended interior colors: Black, Camel Tan.

58—BURNT ORANGE METALLIC

Available all Phoenix models.

Recommended interior colors: Black, Beige.

63—MEDIUM BEIGE

Available all Pontiac models except Firebird.

Recommended interior colors: Black, Beige, Maroon, Camel Tan.

67—DARK BROWN METALLIC

Available all Firebird models except Formula with two-tone paint.

Recommended interior color: Camel Tan.

68—LIGHT BROWN METALLIC

Available all Phoenix, LeMans, LeMans Safari, Grand LeMans, Grand LeMans Safari, Grand Prix, Catalina, Catalina Safari, Bonneville, Bonneville Safari and Bonneville Brougham models.

Recommended interior colors: Black, Beige, Camel Tan.

69—MEDIUM BROWN METALLIC

Available all Phoenix, LeMans, LeMans Safari, Grand LeMans, Grand LeMans Safari, Grand Prix, Catalina, Catalina Safari, Bonneville, Bonneville Safari and Bonneville Brougham models.

Recommended interior colors: Beige, Camel Tan.

72—MEDIUM MAROON METALLIC

Available all LeMans, LeMans Safari, Grand LeMans, Grand LeMans Safari, Grand Prix, Catalina, Catalina Safari, Bonneville, Bonneville Safari and Bonneville Brougham models.

Recommended interior color: Maroon.

75—BRIGHT RED

Available all Phoenix and Firebird models except Formula with two-tone paint.

Recommended interior colors: Black, Red, Maroon.

77—DARK MAROON METALLIC

Available all Pontiac models.

Recommended interior colors: Black, Beige, Maroon, Camel Tan.

84—DARK CHARCOAL METALLIC

Available all Firebird models.

Recommended interior colors: Black, Silver.

