

# RENAULT

STRAWBRIDGE SALES, INC.  
59.99 SOUTH MAIN ST.  
RED LION, PA 17356  
PHONE 244-8126



**18 i**  
**Le Car**  
**And introducing Fuego**  
**and Fuego Turbo sport coupes**



In this brochure, Renault proudly presents three remarkable front wheel drive car lines for America. We say that with the weight of considerable experience and authority, for, after all, Renault is the world's 6th best selling car name, and its leading producer of front wheel drive cars (more than Chrysler, Ford and General Motors combined).

To fully appreciate the quality, performance, comfort and efficiency of Renault Fuegos, 18is and Le Cars built for America we must return briefly to Paris at the turn of the century and the early triumphs of Louis Renault, European counterpart of Henry Ford.

The first Renaults were called Voiturettes ("small car", in French). From their beginning in 1898 and for more than a quarter of a century they were marvels of engineering innovation and acumen.

The early reputation for Renault performance was forever established as these small lightweight vehicles consistently outperformed cars with twice the weight and many times the horsepower on the roads and racing circuits of Europe.

In the more than 8 decades since its start in a shed near Paris, Renault has grown exponentially to become one of the most respected of worldwide industrial conglomerates.

1898

There are 225 corporations functioning within the Renault group structure. Nearly a quarter of a million employees in 40 countries are engaged in the production of not only cars, but buses and vans; bicycles and motorcycles; trucks, trolleys and tractors; railroad cars; 4-wheel drive supply vehicles; and industrial robot assembly equipment.

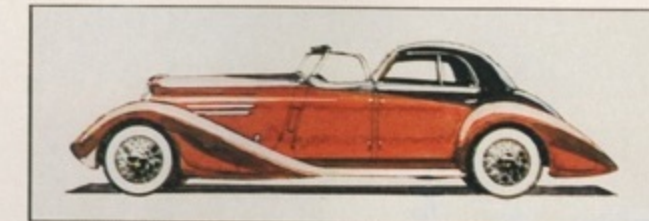
Renault is also a supply source for high-grade steel, mechanical components, metal castings and rubber and plastic products. And other industries look to Renault for engineering and contracting consultation, vehicle leasing and rental, financial management assistance, warehousing, and transportation and shipping services.

Worldwide there are more than 18,000 outlets for sales and service of Renault products. This includes the more than 1,300 Renault and American Motors Dealers in this country, the largest sales and service network of any European import.

Renault's impressive presence in America will soon be reaffirmed and strengthened with the 1983 introduction of a new family of Renault designed cars to be built by and for Americans at the American Motors production facility in Kenosha, Wisconsin.

With those impressive credentials as a backdrop, now review the Renault cars presented in this catalog...Fuego, 18i and Le Car. They are outstanding examples of the superior technology and advanced design concepts that have made Renault one of the most respected and successful car makers in the world.

1982



(Above) The original shed of Louis Renault (Below) Renault assembly facilities in Flins, France

## Renault Fuego. Its essence is performance.

Essence is the nature of a thing...the "Why?" of its being. The essence of Renault Fuego (fway' go) is "performance".

Not luxury, though Fuego is comfortably elegant.

Not economy, though Fuego is admirably efficient\*.

Not contemporary design, though Fuego is artfully, pleasingly shaped.

But "performance"!

Renault Fuego is the gifted offspring of a conscious wedding of art and science...a true performance coupe offering outstanding roadability, eager throttle response, and that intangible presence that can up the pulse rate on sight.

There are two variations to the theme: Fuego with 1.6L, fuel-injected OHV 4-cylinder engine; and Fuego Turbo from the same engine family, but

boosted an awesome 31% in power.

If we modestly describe acceleration in the basic Fuego as impressive, then, in conscience, we must define Fuego Turbo as inspiring.

Both Fuego and Fuego Turbo are very respectable in the fuel efficiency arena, with the edge surprisingly going to the more responsive Fuego Turbo.\*

There is much more to the performance quotient of Renault Fuego Turbo

than simply the exhilaration of acceleration. Only a handful of cars in the world—past or present—have anything at all in common with Renault Fuego Turbo.

Read on!

\*See EPA Estimates in Specifications Section



Fuego Turbo Performance Coupe

## Renault Fuego. Inspired engineering.



Integral rear spoiler



Map pockets in the door



Available power sunroof



Renault Fuego exemplifies what happens when inspired engineering has the upper hand in bringing a car to market.

The performance technology you expect in a great road car is there in abundance.

Fuego aerodynamics are the slitheriest ever for a production Renault in this country. Its drag coefficient is a svelte 0.35.

The "L" Jetronic fuel injection system is the most recent generation. Fuel and air are metered out in the precise combination and quantity

asked for when foot is put to throttle.

In Fuego you do more than travel over the road, you are connected to it by steel-belted Michelin radials, front and rear stabilizer bars and a full coil suspension system that is computer-tuned to performance standards. Quick, power-assisted rack and pinion steering (lock to lock in just 2.8 turns) completes the connection.

Fuego also offers the superior traction of front wheel drive, large capacity, power-assisted front disc/rear drum brakes, and 5-speed manual transmission with overdrive.

And, of course, Renault's Turbo credentials are impeccable. Since 1979, specially prepared turbocharged Renaults have been competing with and winning against cars with as much as twice the engine displacement in prestigious Formula One Grand Prix racing. The new Renault 5 Turbo proved itself quickly on the international rally circuit with a stunning win in the punishing 2,400-mile 1981 Monte Carlo Rally.



## Renault Fuego. The performance environment.

While Renault Fuego is a true sports coupe with generous proportions for four adults, it is, above all a driver's car. Focus of the driver command center is a precisely angled leather-wrapped steering wheel on an infinitely adjustable steering column. The easy-throw 5-speed shifter is right where the hand expects it to be.

Just above the shifter is the environmental control module for heating, defrosting, vented air, optional air-conditioning and standard

AM/FM stereo radio (four speakers).

To the left of the shifter on Fuego Turbo is a standard illuminated digital quartz clock and a turbo boost gauge.

Just below eye level, behind the steering wheel, a visored monitor panel houses the speedometer with odometer and tripmeter, an 8,000 RPM tach, and gauges for fuel level and engine temperature, and a unique oil gauge that lets you read the oil level from inside when the key is on and engine not running. Above the

gauges a thoughtful alert bar lets you know when the rear defogger, hazard flasher, emergency brake, headlamps and high beams are on; cautions you to buckle up; provides an early alert for worn brake pads and battery/alternator and backs up the gauges with low fuel and oil pressure warning lights.

Primary controls for turn signals, 2-speed windshield wipers, intermittent wiper, window washer, headlamps, high beams, horn and

optional cruise control (Available with optional automatic transmission; not available on Fuego Turbo) are activated by steering column mounted stalks within easy reach of the driver's fingertips.

It is a credit to Renault design integrity that this myriad of primary and ancillary telemetry is so impressively displayed and practically positioned.



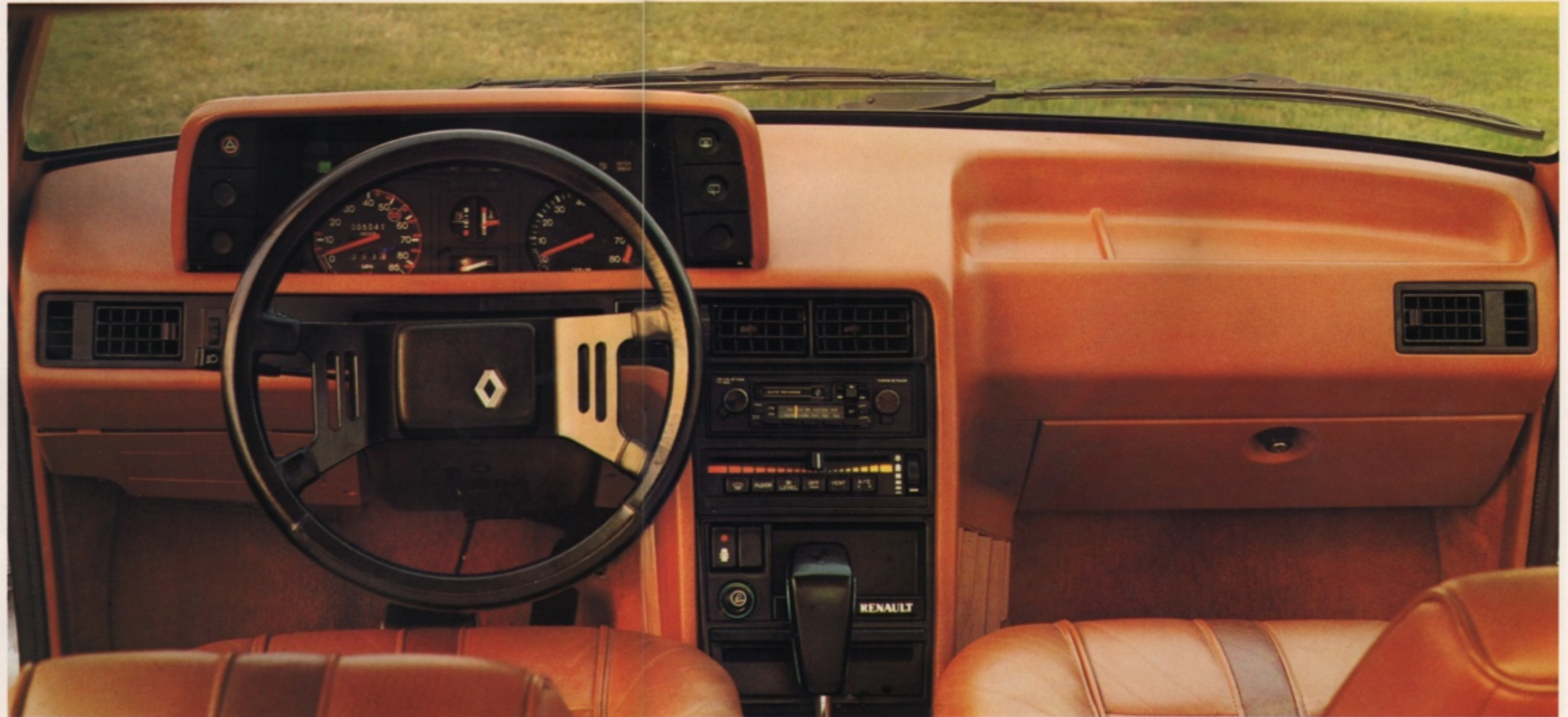
Standard 5-speed transmission



Turbo boost gauge included with available Turbo package



Fuego rear hatch release on lower driver door post



Standard Fuego instrument panel with available automatic transmission, air conditioning and AM/FM cassette stereo

## Ergonomics: a Renault passion.



Available nutmeg leather interior seat trim

Renault has always approached the subject of interior design with the firm belief that driver and passengers should be able to ride for hours on end without fatigue or discomfort.

Hence Fuego seating is bio-formed for optimum support and comfort of driver and three passengers. The front bucket seats have adjustable backrests, integral headrests, thickly cushioned lower bolsters and nearly ten inches of forward or backward travel.

Though smaller and lighter than many other cars in its class, Fuego, according to the EPA interior volume index, has generous passenger and luggage space. For example, there's a whopping six cubic feet more space inside Fuego than in Toyota Celica Supra.

Carpeted passenger and cargo areas, door trim, soft headliner, instrument panel and seat trim are pleasingly color-keyed. The padded visors have vanity mirrors, and overhead passenger assist handles are built in.

The split rear seat back design extends the practicality of Fuego's rear compartment. One seat back can be folded down to allow storage of skis or other long items while the other seat is occupied by a passenger. And beneath the cargo area carpeting are two concealed storage compartments for valuables you want to keep out of sight. Incidentally, the large backlight hatch is opened only by remote latch on the inside lower post of the driver's door.

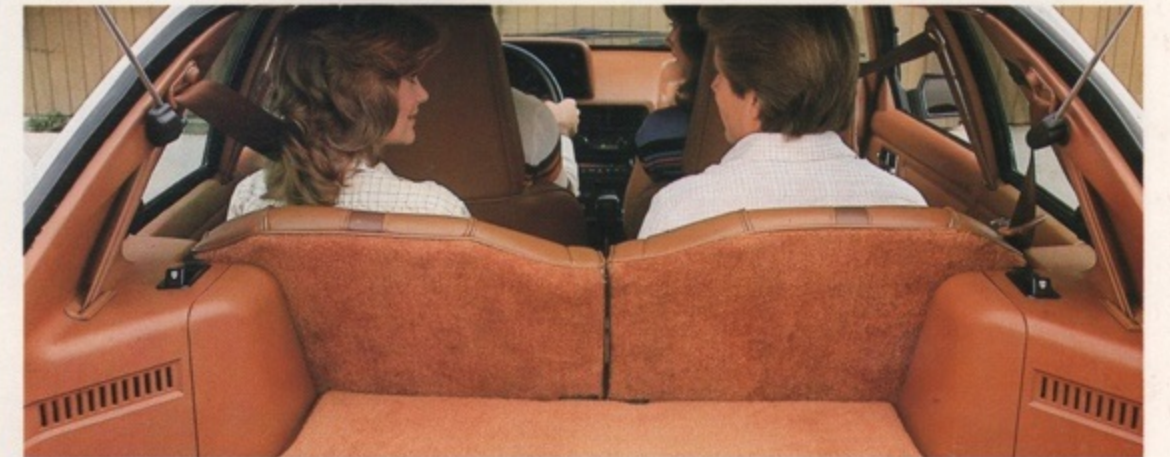
The standard seat upholstery, in gray, blue or nutmeg, is soft fabric with a subtle check design in harmony with Fuego's performance theme. An optional touring interior includes supple nutmeg-hued leather seat trim.

The available sun roof is power operated and provides a larger opening than any similar roof in the U.S.

To sum up matters, Renault has carefully designed the Fuego interior to be a satisfying habitat for the performance enthusiast, and a quiet, secure, comfortable environment for passengers.



Standard check fabric seat trim



Bio-formed split back rear seat folds flat to provide generous luggage space

## Renault 18 i. A sedan for all seasons.

In the trim and handsome 18i Sedan and Sportswagon, Renault has elegantly demonstrated its mastery of the science and art of car making.

Take, for example, the superb Renault 18i Deluxe Sedan shown below. On the one hand, it bristles with advanced technology to provide the levels of ride, handling and performance expected of a great road machine from Europe.

On the other hand, this stunning Renault 18i is a crisply styled, elegantly appointed, 5-passenger touring sedan to be revered as much for aesthetics as for engineering excellence.

It is, perhaps, this uncommon blend of style and technology that has helped Renault 18i gain nearly instantaneous success in the heady world of fine automobiles where it competes.

In just three years since its European introduction, the Renault 18i has become one of the best selling car series in the world.

It is a pleasant consequence that Renault 18i is also an outstanding value. In today's market, where car buyers have come to expect a high sticker price to go along with high technology, the Renault 18i Sedan and Sportswagon are

surprisingly affordable.

And the remarkable Renault 18i also offers outstanding fuel efficiency\* ...close to far smaller, far less sophisticated cars.

All things considered, the Renault 18i must be considered one of the most intelligent choices for family conveyance available in this country.

\*See EPA Estimates in the Specifications Section



Renault 18i Deluxe Sedan

## Renault 18i. A wagon for all reasons.

The Renault 18i Sportswagon presents an ideal solution to a common dilemma: How to accommodate a travel oriented family while satisfying your passion for driving excitement.

It is an exhilarating wagon with spirited acceleration from a fuel injected 1.6 liter 4-cylinder engine.

It is a rewarding wagon to drive ...stable, agile, quick in the turns,

thanks to front wheel drive, rack and pinion steering and full coil suspension with a variable flex feature in the rear that compensates automatically for the various cargo wagons carry.

While it provides many things wagon owners have had to pass up, the Renault 18i Sportswagon provides everything a wagon is intended for.

The wide rear hatch opens on

more than 65 cubic feet of cargo space with the rear seat folded flat; plenty of room for flower flats, camping gear, garage sale treasures or what have you.

Even with the rear seat up, and 5 passengers comfortably strapped in, there's 35 cubic feet of luggage space.

On Deluxe models, an optional roof rack extends the utility of the stylish Renault 18i Sportswagon.

Like all Renault cars, the 18i Sportswagon is quality crafted to be durable and reliable. Given its affordable sticker price, outstanding fuel efficiency,\* spacious and well-appointed passenger compartment, advanced engineering and timeless design, this could well be all the wagon your family will need for the remainder of the 80s.

\*See EPA Estimates in the Specifications Section



*Renault 18i Deluxe Sportswagon with available roof rack*



## Renault 18i. A very complete automobile.



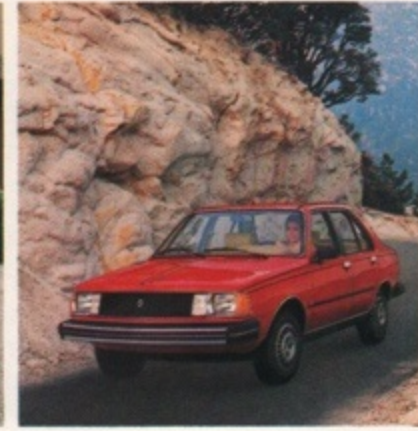
18i Sedan trunk offers courtesy light



AM/FM stereo radio is standard on Deluxe 18i



Rear seat folds providing 31.5 cubic feet of luggage space



Renault 18i Deluxe Sedan

The name Renault has become synonymous with engineering innovation and advanced technology. The Renault 18i exemplifies that tradition.

Its wind-tunnel honed shape neatly slices the air promoting excellent directional stability and solid road adhesion.

Bosch L Jetronic fuel injection meters fuel and air to the standard 1.6 liter, 4-cylinder, aluminum alloy OHV engine in precise measure for optimum performance and economy.\*

The engine is deftly mounted forward of the front wheel drive trans-axle to preserve a delicate 60/40

percent front to rear weight ratio.

Commendable ride and handling are the direct product of highly sophisticated suspension components: independent front transaxle and solid rear axle with long travel helical coil springs (variable flex on the Sportswagon) surrounding hydraulic shock absorbers. The system also features front and rear stabilizer bars and negative scrub radius to help the 18i step over road defects.

Standard steel-belted Michelin radials give the Renault 18i a tenacious grip on the variety of road surfaces it will encounter. And rack and pinion steering gives the driver

positive control.

Power front disc/rear drum brakes are incorporated in a dual diagonal braking circuit. That simply means, should either front or rear brakes malfunction the other half of the system would not be affected.

You'll also appreciate the long lasting beauty of Renault 18i that comes from the liberal use of specially treated steels, special sealants and a carefully monitored exterior finish program starting with a complete primer bath that electro-magnetically draws the protective coating into every nook and cranny.

\*See EPA Estimates in the Specification Section



Renault 18i Deluxe Sportswagon with available roof rack

## Renault 18i. Adventures in inner space.



18i Deluxe instrument panel



Available 5-speed manual transmission



Standard Cabarfae cloth seat trim on 18i Deluxe

One of the most remarkable attributes of Renault built vehicles are their superbly proportioned, planned and appointed interiors. It works that way because Renault is acutely aware of the importance of bio-engineering in the car making process. After all, driver and passengers will, at times, spend hours on end inside Renault 18i. That experience should be pleasurable and relaxing.

To that end, 18i seating is bio-formed to provide restful support for the human anatomy. Seat covering in the Deluxe 18i Sedan and Sportswagon is a lush, soft Caberfae Cord cloth in Gray, Blue or Nutmeg, depending on exterior color selection.

Interior upholstery in the base Sportswagon and Sedan is easy care vinyl. Deluxe vinyl is available for the Deluxe Sportswagon.

As an option on Deluxe models you can order a Touring Package that includes reclining bucket seats and rear seat trimmed in Nutmeg leather.

On Deluxe models the floor carpeting, door trim panels, instrument panel, headliner, and front/rear combination seatbelt and shoulder harness are all harmoniously color-keyed.

Lest you think the inside of Renault 18i is all room and comfort and no driver convenience, observe the control center, above left. A vast array of instruments, gauges, controls, switches and alert lights are artfully organized in impressive modules carefully positioned for driver scan and reach.

Deluxe 18i models include a tachometer, tripmeter, temperature/fuel level/oil level gauges, quartz electric clock, and an extensive bar of warning lights to monitor important driving functions. The most common controls—lights, horn, washer/wiper and turn signals—are within fingertip reach on steering column mounted stalks. The shift lever for the standard 4-speed manual, available 5-speed manual with overdrive, or available automatic transmission is floor mounted in a smart center console.

And on Deluxe models an AM/FM Stereo radio is standard, made more enjoyable in highway travel with an extra quiet insulation package.



Nutmeg leather seat trim available on Deluxe models



On 18i Sportswagon the rear seat folds flat

Renault 18L  
Adventures in inner space

## Renault LeCar. World's best selling front wheel drive car.

Wherever the sprightly Renault Le Car is introduced it's not long before it's winning admiration and influencing buyers. It's been the best selling car in Europe for years. And now it's the best selling front wheel drive car in the world!

Maybe the reason Renault Le Car is ahead of all other FWD cars is because of its engineering sophistication.

Maybe it's Le Car's unique design...smartly aerodynamic for outstanding efficiency,\* yet distinctively shaped to stand out in a monotonous world of look-alike, act-alike economy cars.

Another rationale for Renault Le Car's phenomenal acceptance worldwide is the exceptional room and comfort it provides for four adults.

And the generous space provided for gear beneath the large rear hatch.

Or possibly it is the inspired performance of the enthusiastic 1.4 liter 4-cylinder engine under Le Car's neatly sloping hood. After all, it is the production version of a race bred powerplant that's been holding its own admirably in some of the toughest motorsport competition in North America.

But probably what American buyers are coming to appreciate more than anything else is that this smart little performer, Renault Le Car, with all its room, riding prowess, comfort, miserly fuel consumption\* and advanced technology has one of the lowest list prices around.

\*See EPA Estimates in the Specifications Section



Renault Le Car with available Sports package. Background: Renault 5 Turbo, not available in U.S.

## LeCar's best feature is its abundance of features.



Deluxe reclining bucket seats



Swingout rear quarter windows (std. Deluxe 2-door)



Chrome wheel trim rings (std. Deluxe)



Bucket seats tilt forward



Renault Le Car Deluxe 4-door

For a small car so attractively priced, Renault Le Car is remarkably endowed. It arrived in the U.S. seven years ago with a level of technology small cars normally don't provide.

The front wheel drive system is the product of more than 20 years pioneering work in FWD design. It provides excellent traction and stability, while Le Car's four wheel independent torsion bar suspension system steps neatly over good roads or bad with nary a whimper.

Rack and pinion steering is provided for quick, sure maneuverability.

Large capacity, self-adjusting front disc/rear drum brakes are designed to deliver straight line braking power stop after stop.

At the four corners of Le Car's unitized monocoque body assembly are standard Michelin steel-belted radials. Incidentally, the unitized construction is bonded together by more than 10,000 welds; its a high-strength, lightweight structure that helps minimize squeaks and rattles.

As mentioned, the 1.4 liter 4-cylinder engine offers inspired performance, smoothly apportioned

through a fully synchronized 4-speed manual transmission. The engine block is cast iron for quiet operation and durability, while aluminum cylinder heads reduce weight and boost performance.

Someday there may be another small car that offers the exceptional blending of performance, room, ride, economy\* and affordable price of Le Car. Most likely it will be engineered by Renault.

\*See EPA Estimates in the Specifications Section



Renault Le Car Deluxe 2-door with available ski-rack

## LeCar demonstrates: small is not always little.



Available Le Car Sports Package includes a maxi-grip shift lever, fog lamps, styled aluminum wheels, tachometer, Soft-Feel Sports Steering Wheel, and more



Renault Le Car 4-door Deluxe with available sunroof and styled aluminum wheels

There are a lot of *small* things to like about this charmer from France. Its small price. Small fuel bills.\* Or fitting its sub 12-foot length into small parking spaces.

But there are even more *big* things to like about Renault Le Car. The way it holds four adults with ample room for heads & hats, hips & shoulders, knees & legs. The big power of its small displacement engine. The big room that's available for hauling things you load through the huge rear hatch. With the rear seat folded flat there's more than 31 cubic feet of store-just-about-anything space.

Let's not forget big choice. There's the remarkably well equipped

base Le Car 2-door, a smartly appointed Deluxe 2-door and a comfortable and convenient Deluxe 4-door. For the enthusiast on a budget, there's even an available Sports Package with styled aluminum wheels, bold exterior striping, fog lights, bio-formed reclining bucket seats in performance check fabric, tachometer and a sports steering wheel and shifter knob.

We should also mention that those big polyurethane front and rear bumpers are capable of taking a 5-MPH whack without damage to the Le Car.

All Renault Le Cars are built with care and craftsmanship as a matter of pride. Each vehicle is subjected to

more than 1,500 quality control checks during the production process. Each Le Car is "rung out" on a more than 1.8 kilometer road test, then touched up, tuned up, trimmed up per the instructions of the test pilot prior to shipment.

So one of the best things to like about Renault Le Car is the big confidence you have that it's built strong and durable for years of reliable service. We're so confident of Le Car's ability to perform as described that we've brought it under the famous Buyer Protection Plan. (See back cover for details).

\*See EPA Estimates in the Specifications Section



Renault Le Car 2-door Deluxe with available sunroof and styled aluminum wheels

## LeCar interior: in a word, smart.



Le Car Deluxe instrument panel

Standard 4-speed manual transmission



Special performance check fabric on reclining bio-form bucket seats, included with available Sport Package

*Smart* is a very appropriate word to describe the Renault Le Car interior program because it applies on two important levels.

On the first level, Le Car's interior is very intelligently designed. Thanks to the unibody construction and forward position of the engine and front drive componentry, there's truly generous space available for the driver, three passengers and a lot of gear. The instrument panel is intelligent, too. Controls and switches are easily accessible by eye and hand. *Smart* stalks on the steering column provide instant fingertip control of important functions: running lights, headlamp flasher, high beams, horn, lane change indicator and directional signals.

On the second level, *smart* applies to the high trim level found on every Renault Le Car. All seats are bio-engineered to give comfortable support in all body contact areas. That means different portions of the seat will be softer or firmer, depending on body mechanics.

The standard front bucket seat and folding rear bench seat are tailored in a handsome, easy-care vinyl grain. And Renault bucket seats offer amazing movement, all for the greater comfort and convenience of the occupants. They move on individually adjustable long travel tracks so extra leg room for rear seat passengers is available. And the whole bucket tips forward making entry and exit less complicated. And on Deluxe bucket seats the backrest also reclines in an infinite number of positions.

On deluxe models the buckets and matching rear bench are clad in soft, luxurious cloth upholstery. Plus extra quiet insulation is standard. The floors are fully carpeted, and swing-out rear quarter windows allow extra ventilation.

It should be comforting to know that whatever way you decide to go, Renault Le Car 2-door or Deluxe, 2-door or 4-door, you've made a *smart* choice.



Standard vinyl bucket seats



Wide opening rear hatch

## Renault Options

Pictured below are a few selections from the lengthy roster of available Renault Fuego, 18i and Le Car options.

### Fuego

Air conditioning  Power vinyl sun roof  Visibility group including remote right-hand mirror and rear window wiper  Convenience Group including power windows and door locks  Nutmeg-hued leather seat trim  3-speed automatic transmission with Cruise Control (NA Fuego Turbo)

Cast aluminum 14.4 in. wheels and Michelin 165/70HR365 low profile TRX tires (required with Fuego Turbo)  Fuego Turbo package includes 1.6 liter Turbocharged engine with inter-cooler, sports accent striping, interior and exterior "Turbo" identification, Turbo boost pressure gauge  AM/FM stereo cassette with 4 speakers  Color-keyed carpeted floor mats  Luggage compartment privacy curtain.

### 18i

Nutmeg-hued leather seat trim\*  Two-tone accent paint including

Clearcoat finish over Black and Silver (Deluxe Sedan only)  Cast aluminum wheels\*  Driving Group including power steering, padded steering wheel and 175/70 x 13 blackwall steel-belted Michelin radials\*  Convenience Group including remote right and left-hand outside mirrors, power front windows and power door locks\*  Air Conditioning\*  Metallic clearcoat paint  Tinted glass  5-speed manual transmission\*  Automatic transmission\*  Automatic transmission with Cruise Control\*  AM/FM Stereo Cassette radio\*  Roof travel rack (Deluxe



Cruise Control (NA Le Car)



Illuminated Digital clock



Automatic transmission (NA Le Car)



Fuego remote control passenger mirror



Fuego rear hatch wiper



AM/FM Stereo Cassette



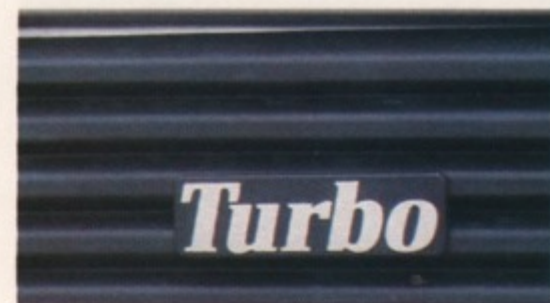
Power windows and door locks (NA Le Car)



Fuego cast aluminum wheel



Le Car sports steering wheel



Fuego turbo package

Wagon only)  Floor mat kit.

\*Deluxe Models only

### Le Car

Air conditioning\*  Sun roof\*  Tinted glass\*  Rear wiper/washer\*  AM/FM stereo radio\*  AM/FM Stereo Cassette\*  Protective floor mats\*.

### Sports Package

(Deluxe 2-dr. only): Bio-formed reclining front bucket seats; Sports steering wheel; "Maxi" gear shift knob; Tachometer; Fog lights; Custom striping; Aluminum wheels.

\*Deluxe models only

## Dealer Accessories

Your Renault Dealer offers and can install many quality accessories for Renault Fuego, 18i and Le Car made for America.

These accessories have been factory approved, which means that they must be manufactured to Renault's high standards for quality and workmanship. See your Renault Dealer for a complete selection of available factory approved accessories.



Le Car air conditioning



Le Car tachometer



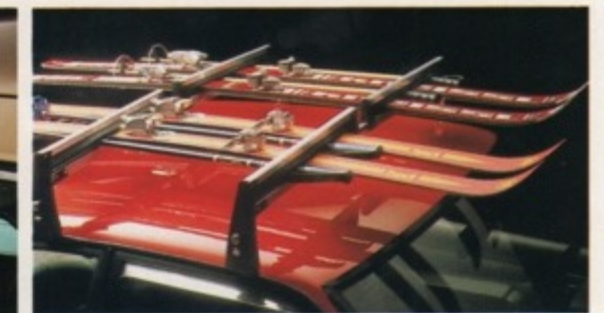
Roof rack



Fuego sunroof



Vent shades



Ski rack



Le Car sunroof



Rear window lower



Vinyl body-side molding

# Renault Specifications

## Fuego



### Models:

Renault Fuego is available as a 2-door, 4-passenger, rear hatch coupe with a standard 1.6 liter engine or optional turbocharged 1.6 liter engine.

### Dimensions:

**Wheelbase:** 96.1 in. (2442 mm)  
**Length:** 176.8 in. (4540 mm)  
**Width:** 66.6 in. (1690 mm)  
**Height:** 50.5 in. (1283 mm)  
**Luggage Capacity:** (seat up) 13.76 cu. ft.  
**Fuel Capacity:** 14.8 gal.  
**Curb Weight:** 2379 lbs.

### Specifications:

**Engine:** In-line, water-cooled, 4-cylinder OHV, aluminum block and head  
**Displacement:** 1647 cc; 1565 cc (Turbo)  
**Bore:** 79mm 77mm (Turbo)  
**Stroke:** 84mm  
**Compression Ratio:** 8.6:1; 8.0:1 (Turbo)  
**Turbo Maximum Boost:** 11.6 psi  
**Fuel/Air Supply:** Standard, Bosch L Jetronic fuel injection: Turbo, exhaust-driven Garrett T3 turbocharger with wastegate, intercooler and Bosch L Jetronic fuel injection  
**Ignition System:** Standard engine, solid state electronic; Turbo, solid state electronic with knock sensor and spark retardation device  
**Electrical System:** 12-volt, negative ground  
**Battery:** 45 amp. hrs. (60 amp. hrs. with air cond.)  
**Alternator:** 50 amp. (70 amp. with air cond.)  
**Drivetrain:** Front wheel drive  
**Transmission:** Fully synchronized 5-speed manual with overdrive  
**Front Drive Axles:** Two independent drive shafts with constant velocity universal joints  
**Front Suspension:** Independent, with lower "A" arms, upper transverse and reaction arms; coil springs and hydraulic shock absorbers; negative scrub radius; 19 mm stabilizer bar

**Rear Suspension:** One-piece box section rear axle assembly with Central "A" shaped control arm and two lateral

trailing arms; coil springs and telescoping shock absorbers; tube-type stabilizer bar

**Steering:** Rack and pinion with integral variable ratio power assist; 2.8 turns lock to lock

**Brakes:** Self-adjusting front disc/rear drum, power assisted with 8-in. booster

**Tires:** P185/70R13 Michelin steel-belted blackwall radials

### Equipment:

Thermostatically controlled electric engine cooling fan  Flow through ventilation; side window defoggers  Wraparound glass rear hatch with defogger and remote latch on driver door jam  Tinted glass  Swing out rear quarter windows  Sailmounted swing-away remote control driver's rear-view mirror  Soft urethane energy-absorbing front and rear bumpers  Front air dam  Wrap around center nerf area  Black bodyside and rear accent molding  Black door pillars and window frames  Styled argent finish wheel covers  black leather-wrapped steering wheel and gear shift knob  Center floor console  Full instrumentation  Adjustable steering column  Bin-type lighted lockable glove box  Change tray  Color-keyed front and rear shoulder and seat belts with retractors  Extra-quiet insulation package  AM/FM stereo radio with four speakers  See your American Motors or Renault Dealer for additional standard Fuego equipment

**Turbo Package:** 1.6 liter turbocharged engine with intercooler; cast aluminum wheels; low profile Michelin steel-belted TRX blackwall radials; sport accent striping; interior and exterior "Turbo" identification, Turbo boost pressure gauge

### EPA Mileage Data\*

	EST	HWY	COMB
1.61 engine with 5-speed manual	24	36	29
1.61 engine with 3-speed auto	24	31	26
1.61 Turbo with 5-speed manual	26	39	30

\*Remember: Compare these estimates with estimated mpg for other cars. Your actual mileage may differ depending on speed, trip length, and weather. Your highway mileage will probably be lower.

### Exterior Colors:

Beige Metallic clearcoat\*  White  Dark Blue Metallic clearcoat\*  Silver Metallic clearcoat  Black  Red

\*NA with Turbo

## 18i



### Models:

Renault 18i is available in a 4-door Sedan and a 4-door Wagon bodystyle. The 18i Sedan or Wagon may be ordered in either a Base or Deluxe model.

### Dimensions:

**Wheelbase:** 96.1 in. (2442 mm)  
**Length, Sedan:** 178.7 in. (4541 mm)  
**Length, Wagon:** 181.5 in. (4612 mm)  
**Width:** 66.5 in. (1690 mm)  
**Height, Sedan:** 55.3 in. (1405 mm)  
**Height, Wagon:** 55.2 (1403 mm)  
**Luggage Capacity, Sedan:** 11.9 cu. ft.  
**Luggage Capacity, Wagon:** 35.0 cu. ft. (seat up); 65.5 cu. ft. (seat down)  
**Wagon Rear Opening:** Max. width 42.5 in. (1080 mm) height 29.4 in. (746 mm)  
**Fuel Capacity, Sedan:** 14.0 gallons (53 liters)  
**Fuel Capacity, Wagon:** 15.0 gallons (56.8 liters)  
**Curb Weight, Sedan:** 2261 lbs. (1026 kg)  
**Curb Weight, Wagon:** 2405 lbs. (1091 kg)

### Specifications:

**Engine:** 1.6 liter, 100.5 CID (1647 cc) 4-cylinder  
**Fuel-air supply:** Bosch L-Jetronic fuel injection  
**Compression ratio:** 8.6:1  
**Electrical System:** 12 volt, negative ground  
**Battery:** 45 amp. hrs. (60 amp. with air cond.)  
**Alternator:** 50 amp. (70 amp. with air cond.)

**Ignition System:** Solid state electronic  
**Drivetrain:** Front wheel drive  
**Transmission:** Fully synchronized 4-speed manual

**Front Suspension:** Independent with lower A-arms, upper transverse arms, reaction arms, coil springs, telescopic shock absorbers, 15 mm stabilizer bar

**Rear Suspension:** 4-bar, 3-element rear axle, coil springs (variable-flex on Wagon,) telescopic shock absorbers, tube type stabilizer bar

**Steering:** Rack and pinion  
**Steering Turns:** 3.55 (2.90 power) lock to lock

**Brakes:** Self-adjusting front disc brakes, rear drum brakes; power assisted with 8-inch booster

**Tires:** 155SR x 13 Michelin steel-belted radials

### Equipment:

Additional standard features on 18i Base and Deluxe models include:  
 Thermostatically controlled electric engine cooling fan  Intermittent wipers  Flow-through ventilation  Quartz analog clock  Trip odometer  Color-keyed carpeting  Individual reclining seats in vinyl  Side window defoggers  Rear shoulder belts  Trunk carpet on Sedan  Trunk light on Sedan  Unitized body construction  Undercoating  Rust-resistant coating  Bodyside scuff moldings  Rocker panel moldings  Bumper nerf strips  Plastic front inner fender panels  Rear defogger

### 18i Deluxe Features:

AM/FM stereo radio (NA on Base)  Individual reclining seats in cloth trim (Deluxe vinyl seats are available on the Deluxe Wagon)  Tachometer and oil level gauge  Adjustable steering column  Floor console with ashtray for rear seat passengers  Glove compartment light  Locking glove box  Styled wheel covers  Deluxe bodyside scuff moldings  Wheelip moldings  Bumper nerf strips with chrome insert  Accent striping  Extra quiet insulation package  rear wiper (wagon only)

### EPA Mileage Data\*

	EST	HWY	COMB
Sedan	MPG	EST	EST
4-speed	29	41	33
5-speed	24	35	28
Automatic	24	31	27
Wagon			
4-speed	28	39	32
5-speed	24	35	28
Automatic	24	31	26

\*Remember: Compare these estimates with estimated mpg for other cars. Your actual mileage may differ depending on speed, trip length and weather. Your highway mileage will probably be lower.

### Colors:

Beige metallic clearcoat  White  Dark Blue metallic clearcoat  Silver metallic clearcoat  Black clearcoat  Red  Dark Green metallic clearcoat

## Le Car



### Models:

Renault Le Car is available in a 2-door and 4-door hatchback bodystyle. The 2-door Le Car may be ordered in either a Base or Deluxe model while the 4-door is only available in the Deluxe version.

### Dimensions:

**Wheelbase:** 95.2 in. (2419 mm)  
**Length:** 142.5 in. (3621 mm)  
**Width:** 60.0 in. (1525 mm)  
**Height:** 55.0 in. (1398 mm)  
**Luggage capacity (seat up):** 9.1 cu. ft.  
**Luggage capacity (seat down):** 31.5 cu. ft.  
**Rear hatch opening:** Max. width 41.7 in. (1060 mm) height 31.5 in. (800 mm)  
**Fuel capacity:** 10.0 U.S. gallons (38 liters)  
**Curb weight, 2-door:** 1820 lbs. (826 kg)  
**Curb weight, 4-door:** 1865 lbs. (846 kg)

### Specifications:

**Engine:** 1.4 liter, 85.25 CID (1397 cc) cast iron block, aluminum head, overhead valve, 4-cylinder in line  
**Compression ratio:** 8.8:1  
**Electrical System:** 12 volt, negative ground  
**Battery:** 45 amp. hrs./alternator  
**Ignition System:** Breakerless electronic  
**Drivetrain:** Front wheel drive  
**Transmission:** Fully synchronized 4-speed manual  
**Final drive ratio:** 3.63:1

**Chassis:** Unitized monocoque body with undercoating and rust-resistant coating

**Front Suspension:** Independent, unequal length control arms, torsion bars, double-acting hydraulic telescopic shock absorbers, stabilizer bar

**Rear Suspension:** Independent, pure trailing arms, torsion bars, double-acting hydraulic telescopic shock absorbers, stabilizer bar

**Steering:** Rack and pinion

**Brakes:** Self-adjusting front disc brakes; rear drum brakes with load sensitive pressure limiting valve. Le Car Deluxe features Bendix vacuum power booster, dual hydraulic front disc brakes

**Emission controls:** Conventional oxidizing catalytic converter (49 States); three-way catalytic converter (California); exhaust gas recirculation system; fuel return line; fuel tank vapor emission control system; secondary air system; positive crankcase ventilation

**Tires:** 145SR x 13 Michelin steel-belted radials

### Equipment:

Thermostatically controlled electric engine cooling fan  Rear window defogger  New column-mounted controls: 2-speed wipers, washers, "single sweep" wipers, lights horn and turn indicators  "Tilt away" bucket seats in grained vinyl (2-door only)  Flow-through ventilation  Side window defoggers  Unitized monocoque body/chassis construction  Fold down rear seat  Radio console and mini console  Undercoating  Rust-resistant coating  Black rally stripes with integral "Le Car" name

### Le Car Deluxe features:

Power front disc/rear drum brakes  Extra quiet insulation package  Reclining bucket seats in cloth or grained vinyl upholstery  Swing-out quarter windows  Full carpeting, Removable carpeted rear parcel shelf  Soft-Feel steering wheel  Cigar lighter  Bodyside scuff moldings (N/A with Sport Package)  Deluxe chrome wheel trim rings  Deluxe rally stripes

### EPA Mileage Data\*

	EST	HWY	COMB
Le Car 2-door and 4-door 49 States	32	40	35
California	29	40	33

\*Remember: Compare these estimates with estimated mpg for other cars. Your actual mileage may differ depending on speed, trip length and weather. Your highway mileage will probably be lower.

### Colors:

Beige metallic clearcoat  White  Dark Blue metallic clearcoat  Silver metallic clearcoat  Black clearcoat (Sport Package only)  Red  Dark Green metallic clearcoat



# Renault Engineering

Engineering excellence has long been the underlying strength of Renault. It is a reputation earned, not bestowed. And Renault engineers are continuously proving it in road racing, in the lab, and on the test track.

Each year on the racing circuits of Europe, Africa, North America and South America, specially prepared Renaults go head to head with such illustrious performers as Porsche, BMW, Lotus, Alfa Romeo, and Ferrari with impressive results! (See "Motorsport" section, next page.) Racing is the ultimate proving ground for the advanced technology incorporated into every Renault built for America.

Listening to many manufacturers

who have recently introduced front wheel drive cars, the uninformed buyer could easily get the impression that front wheel drive is a "break through" innovation responsible for quantum leaps in fuel efficiency, handling characteristics and interior space. Renault recognizes that innovation is seldom the product of inspiration, but rather the result of experimentation and experience.

In fact, Renault pioneered front wheel drive in Europe more than 20 years ago. The majority of Renault cars built for the world today feature advanced design front wheel drive systems that utilize lightweight, high-strength, high-performance components and materials developed by

experienced design engineers. With nearly 20 million FWD cars on the road, Renault is the world's largest manufacturer of front wheel drive vehicles.

Another area that manufacturers have only recently given serious consideration to is aerodynamics...and it shows! In the Renault laboratory at the Aerotechnical Institute of the Saint-Cyr School, aerodynamics has been a subject of constant study for 18 years...and *it shows*; in the distinctive silhouettes and impressive gas mileage figures of Renault cars built for America.\*

One recent Renault prototype alumnus of the Saint-Cyr School has achieved an incredible 0.239 drag

coefficient...a number once considered impossible for a practical passenger vehicle.

One term always mentioned in the same breath with "Renault advanced engineering" is "quality". In support of that, examine briefly the Renault anti-corrosion program. It starts with pre-coated zincmetal sheet steel used in many exterior body panels. To eliminate spot welds where corrosion could get a foothold, a super strong bonding mastic is used to join some outer panels to the unique monocoque body construction.

After assembly the body is subjected to a phosphation treatment that helps resist corrosion and abrasion and promotes paint adhesion. Then

the entire body shell is submerged in a primer bath, electrically charged to pull the paint into every crevice. The primer is baked on, more bonding is added at the door seams to create a positive seal between inner and outer panels, and a petroleum based undercoating is applied to the engine compartment and underbody. All seams and joints inside the cars also get liberal doses of special mastic.

A final electrostatically applied primer coating is baked on before the Renault finally reaches the paint shop where experts apply the durable, high-luster, acrylic finish. Later, after the engine, transmission and suspension system are united with the body, inner fender liners are added to

prevent stone damage.

This anti-corrosion program is so extensive and complete that every Renault built for America carries a 3-year limited warranty against perforation from corrosion (See warranty details on back cover of this brochure).

Renault pledges to continue to pursue aggressive race, research and quality programs to fulfill a basic commitment: to provide Renault passenger cars that offer advanced technology and superb performance, yet remain affordable, comfortable, secure and efficient.\*

\*See EPA Estimates in Specifications Section



# Renault Motorsport

Renault established a unique presence in the world of Motorsport more than 8 decades ago when a single-cylinder Renault moving at a heady 30+ MPH, bested cars with twice the weight and horsepower in the first Paris to Bordeaux road race in 1898.

From the early days when Renault dominated European road racing for a quarter of a century, down to the current generations of Renault racing machines, Renault engineers have consistently demonstrated an uncanny genius for ringing out superior performance from light-

weight, small displacement powerplants.

Latest manifestation of that genius can be seen in the remarkable success of racing Renaults with turbocharged engines of the same design you'll find in the new Renault Fuego Turbo, the first turbo-powered production Renault for America.

In 1978 a turbo-powered Renault Alpine outlasted Porsche and all other challengers in the demanding 24-hour Le Mans race.

Renault introduced the turbocharger to Grand Prix racing four years ago. The first turbo-charged Renault Formula One racing

machine captured the 1979 French Grand Prix. This was followed in 1980 with three Grand Prix victories, the Brazilian, South African, and Austrian; and three more in 1981, including the Dutch Grand Prix, the Italian Grand Prix and the second French Grand Prix victory in three years.

1982 will be a year of accelerated activity for the Renault race team and their turbocharged Grand Prix cars as they mount an all out effort to win the Formula One World Championship.

The new Renault 5 Turbo amazed followers of the international rally

circuit with a solid win over Porsche 911, Audi Quattro, Lancia Stratos and all the rest in the 2400 mile 1981 Monte Carlo Rally.

Another Renault racing machine to watch for 1982 is the new Renault Le Car Turbo prepared for IMSA's Camel GTU series (considered by many to be the most competitive race series in America). It proved its mettle with a strong 3rd place in its first running at the Road Atlanta Georgia event in April, 1981. The Le Car Turbo boasts a race tuned version of the production Renault 5 Turbo engine, boosted from 90 hp in the first phase

to an awesome 260 hp in the turbocharged phase.

The Renault racing program is alive and thriving for very sound reasons which have very little to do with the prestige of winning. What really fires the innovative genius of Renault engineers in the competitive arena is the knowledge that what proves successful in the Renault racing program may one day contribute to the technical excellence and/or passenger security of the 40 different passenger cars Renault builds for the world.



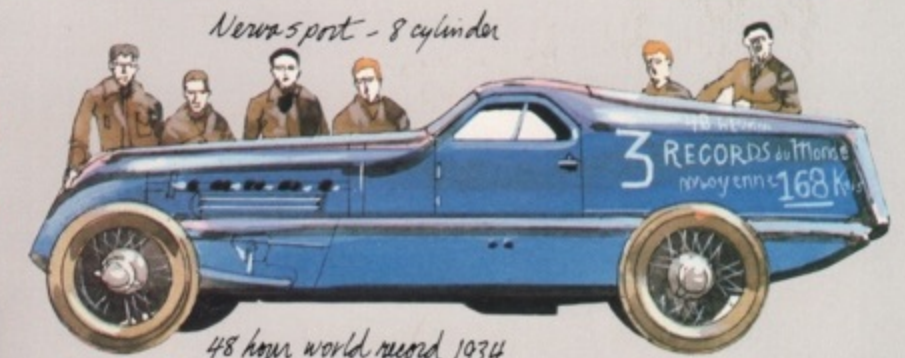
Paris-Vienna 1902



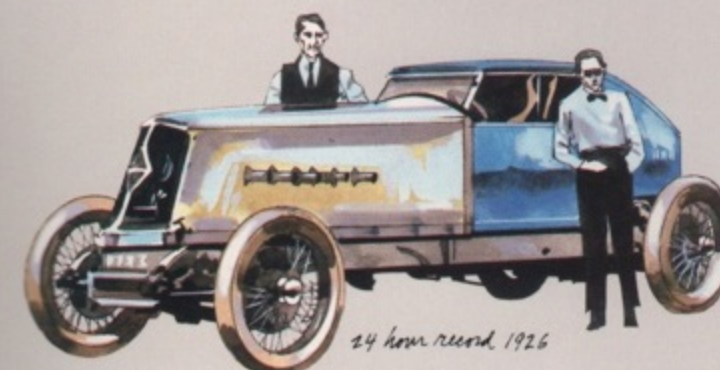
24 hour record 1925



Paris-Madrid 1903



48 hour world record 1934



24 hour record 1926



### **American Motors Buyer Protection Plan\* For Renault Vehicles**

Renault vehicles are now backed by the exclusive American Motors Buyer Protection Plan. Highlights of this and other warranties and plans follow. For complete details see your authorized Renault dealer.

\*Buyer Protection Plan is a registered trademark of American Motors Corporation

### **Full 12 Month/12,000 Mile Warranty Coverage**

New Renault vehicles are protected against defects in material or workmanship under normal use and service by a Full 12-Month/12,000 Mile (20000 km) Warranty covering many items not covered by most automobile warranties.

### **Service Adjustments**

Any needed service adjustments not a part of normal scheduled maintenance will be performed without charge during the first 12 months or 12,000 miles (20000 km).

### **Warranty Service for Owners Who Move or Travel**

Warranty Service will be performed by any authorized Renault dealer in the U.S. or Canada.

### **Warranty Coverage for Subsequent Owners**

Subsequent owners are eligible for any unused portion of the new vehicle warranty.

### **Tire Policy**

Tires are covered by a separate warranty provided by the tire manufacturer.

### **New Vehicle Pre-Delivery Inspection**

Prior to delivery, every new Renault vehicle has been serviced and tested for handling, braking and overall performance in accordance with the Renault Pre-Delivery Inspection Checklist.

### **Loaner Car Service**

If warranty repairs require keeping the vehicle overnight, the servicing Renault dealer will provide a free loaner car subject to terms and conditions in the Warranty and Maintenance Guide.

### **Trip Interruption Protection**

If warranty repairs are required while traveling 100 miles (160 km) or more from home, and "same day" repairs cannot be performed by the servicing Renault dealer, the owner will be reimbursed for extra lodging and meal costs up to \$150.

### **Towing Coverage**

If the Renault vehicle needs warranty repairs and cannot be driven, the owner will be reimbursed up to \$25 to have it towed to the nearest authorized Renault dealer subject to terms and conditions in the Warranty and Maintenance Guide.

### **Renault Powertrain Protection Limited Warranty**

In addition to the Full 12-Month/12,000 Mile (20000 km) Warranty, specific powertrain components of new Renault vehicles are covered for the earlier of 24 months or 24,000 miles (40000 km) against defects in material or workmanship. The vehicle owner must pay for the first \$100 of each valid warranty claim.

### **Renault Perforation from Corrosion Limited Warranty**

Any original equipment part or component installed in a new Renault vehicle (except exhaust components) that proves to have developed perforation from corrosion within 3 years from date of delivery or first use, will be repaired or replaced at no charge.†

†Complete information regarding these warranties can be found in the Renault Warranty and Maintenance Guide.

### **Service Security Plan for Renault Vehicles**

An optional Service Security Plan offering additional comprehensive service protection is available from participating Renault dealers. Features include:

- Standard and Deluxe plans for extended coverage up to 3 years/36,000 miles (60000 km) or 5 years/50,000 miles (80000 km)
- Car rental assistance
- Towing reimbursement
- Trip interruption protection
- Transferable clause
- Deductible clause

Certain equipment items and features illustrated or described in this catalog are optional at extra cost unless otherwise specified. Certain equipment items and features may not be available for all models. This catalog contains information that is correct at time of printing, however, Renault reserves the right to discontinue or change specifications, models, equipment or prices at any time without incurring obligation.



**RENAULT**  
American Motors 