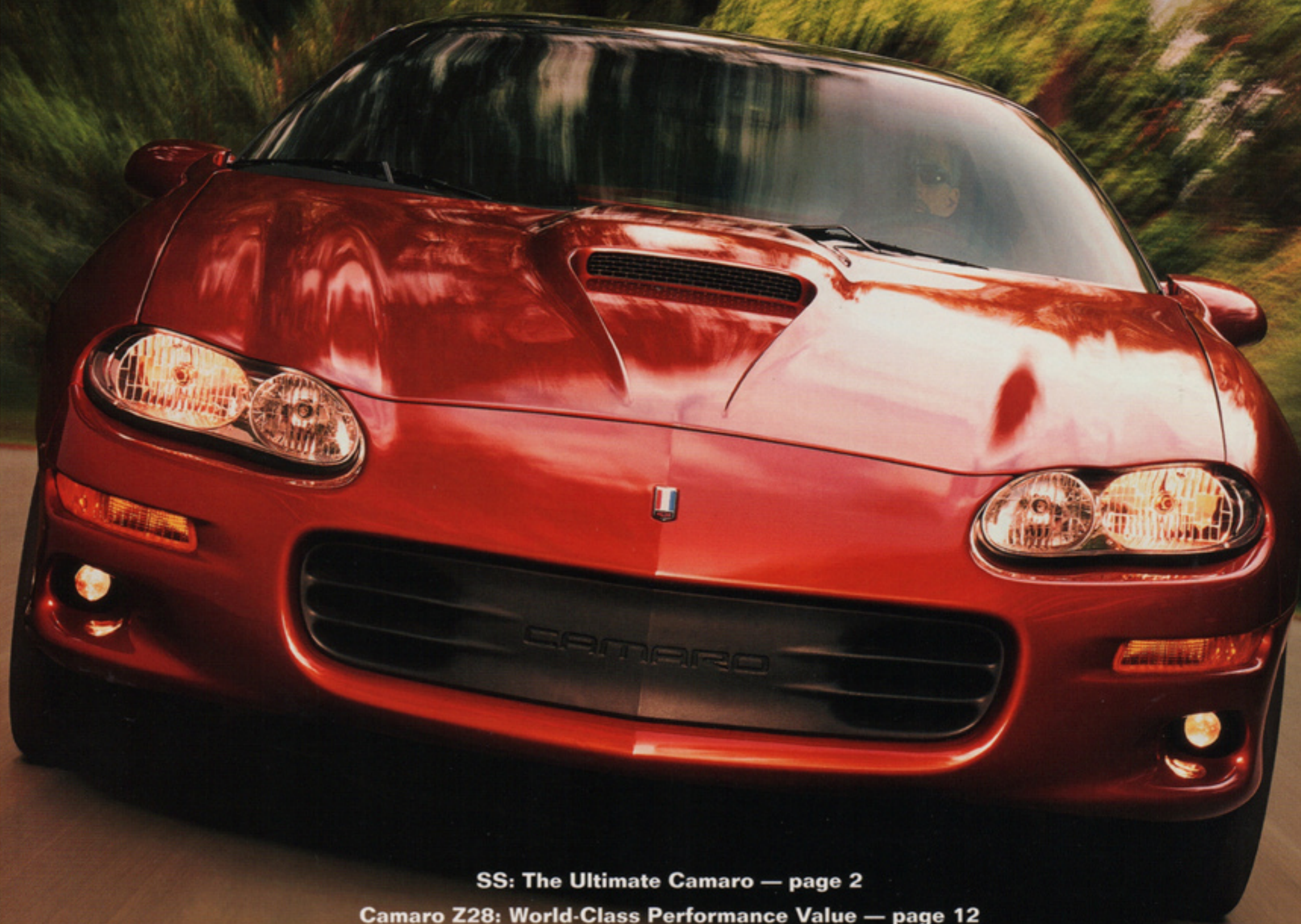


2001 CHEVY  WE'LL BE THERE

CAMARO



SS: The Ultimate Camaro — page 2

Camaro Z28: World-Class Performance Value — page 12

A Few Hot Laps On The Racetrack — page 14

Camaro V6: Agile, Affordable, Attention-Getting — page 16

A Comprehensive Standard Equipment Package — page 18

The Camaro Convertible — page 20

Standard: Advanced Safety Technology — page 24

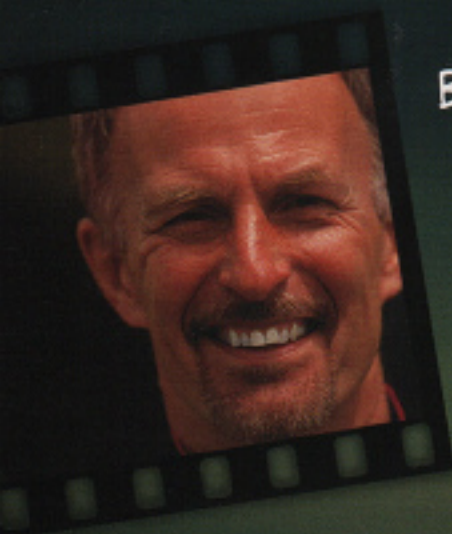
We'll Be There — page 26

Buyer's Guide — page 30

WITH CAMARO SS, WE JUST DON'T HOLD BACK ...

BY JOHN HEINRICY

CHEVROLET CAMARO CHIEF ENGINEER



John Heinricy has never been known to hold back. Around the halls of Chevrolet Engineering and at racetracks across the country, John is highly regarded as a thoughtful man with "gasoline in his blood." He's worked his magic on some legendary Chevrolets, including fourth- and fifth-generation Corvettes, the '83 Monte Carlo SS, and the third- and fourth-generation Camaros. And John's racing accomplishments rival his engineering career. In 196 races, he's competed 193 times with GM V8 power, in show-room stock, modified, and all-out race Camaros and Corvettes.

When I first started at GM in 1970, I was working at the proving grounds and soon had the opportunity to drive a brand-new '70 Z28 and a prototype LS6 454 Camaro SS — two exciting cars. I also had the chance to get behind the wheel of a dual four-barrel '69 Z28 with 4:11 gears; that was an incredible moment. From that day on, I was a confirmed Camaro lover.

The 2001 SS carries on this performance tradition. It's the best Camaro ever.

(Continued on page 4)

CAMARO SS PERFORMANCE FEATURES

- 325-hp LS1 V8 with forced-air induction and 350 lb. ft. of torque
- Four-speed automatic transmission (optional six-speed manual)
- High Performance Ride and Handling Suspension
- P275/40ZR-17 Goodyear Eagle F1 tires and lightweight aluminum wheels
- Four-wheel disc brakes with ABS
- Power steering cooler
- Zexel-Torsen differential with limited slip performance rear axle
- Low-restriction exhaust with dual outlets
- High-level rear spoiler

... THE BEST CAMARO EVER.

Under the SS hood, there's a close relationship to the Corvette — the LS1 V8 engine and the six-speed transmission are very, very close. The only modifications from Corvette specifications are made for packaging reasons (how the powertrain and exhaust fit in and under the car).

One of the things the 2001 SS really has going for it is that we've changed the LS1 camshaft and intake manifold to really fatten up the mid-range torque — and the SS driver is going to feel that, especially in the 2000–5000 rpm range.

The SS has a really aggressive attitude, and that's an appealing part of the character. It comes across as a car that almost begs you to have some fun — it's got that tone, that attitude and that sound.

Obviously, we have 17-inch wheels and tires — we put the Goodyear Eagle F1 tires on the car to make sure we have a lot of rubber on the road. We also have a very advanced braking system with aluminum twin-piston calipers up front, Bosch ABS and discs all around. The optional all-speed Traction Control was revised in 2000 to allow a little bit more spirited driving without system intervention, but it still works well in slippery conditions, and it still knows when to intervene.



In setting our goals for Camaro, we just don't hold back. We don't say, "Well, we have to be good enough to meet the performance of the Mustang" or something like that. We do the best we know how to do, and that's how you get things like the LS1 V8.

People love Camaros. That makes my job fun.

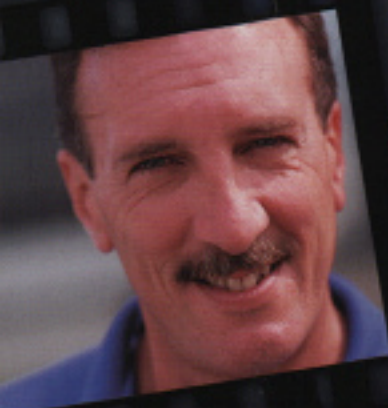
Camaro SS Coupe in Onyx Black with optional removable roof panels.



"THE CAMARO SS FITS RIGHT IN
WITH SOME OF THE GREATEST PERFORMANCE
CARS IN THE WORLD."

-JOHN HEINRICY

JOIN THE CLUB.



BY SCOTT SETTLEMIRE

CAMARO ASSISTANT BRAND MANAGER

One of the greatest parts about this job is going out almost every weekend somewhere across the country or the world to a Camaro club meet. It's great to know so many people feel so strongly about this car.

Since day one — in 1967 — Camaro has always stayed true to its heritage, and that's a big part of the appeal. Camaro really gets attention with its aggressive style, awesome acceleration and of course, its legendary status on the street.

Do I think today's Camaro is the best ever? I would say, "Go down to your local Chevy dealer, jump behind the wheel of a Camaro SS, take it for a drive and ... you tell me."

"WHILE IT IS ANFULLY HARD TO PREDICT WHAT'S GOING TO BE A COLLECTIBLE, 20 OR 30 YEARS FROM NOW, IF I WERE A BETTING MAN, I WOULD PUT MY MONEY ON THE CAMARO SS."

-REG HARRIS, SLP ENGINEERING

"I'VE WANTED AN SS EVER SINCE I FIRST SAW ONE AS A KID IN NEW YORK. THE NEW SHAPE MADE IT IRRESISTIBLE. IT'S ABOUT THE MOST FUN YOU CAN HAVE ON THE OPEN ROAD - AND I'M A POLICE OFFICER!"

-MIKE GRASSO, 2000 CAMARO SS OWNER

AND DIRECTOR OF THE SUPER SPORT OWNERS ASSOCIATION

"I HAVE TO SAY I FEEL A LITTLE SYMPATHY FOR THE POOR FOLKS WHO ARE JUST DRIVING THOSE FOUR-DOOR SEDANS."

-JOANNE DOMKA, 1997 CAMARO OWNER

VISIT OUR WEB SITE - CHEVROLET.COM - for information regarding Camaro clubs, Camaro collectibles (including wearables and keepsakes) and lots of other great information on this legendary Chevrolet.

Foreground: SS Convertible in Bright Rally Red. Background: 1970 Z28/RS in Citrus Green, 1984 Z28 in Red, 1996 Brickyard 400 Pace Car in Arctic White and 1967 SS/RS Indy Pace Car in Ermine White. Special thanks to the Eastern Michigan Camaro Club for providing some very special Camaros.




ARE YOU READY FOR A REAL RIDE?

"CAMARO IS A CAR THAT BRINGS
BACK THE FUN OF DRIVING."

-CHUCK HOLMES,
OWNER OF SEVEN CLASSIC CAMAROS

"THE GOLDEN AGE OF MUSCLE CARS WAS
NOT 30 YEARS AGO. IT'S NOW.
LONG LIVE THE CAMARO!"

-PHILLIP SABLO II, 1967 CAMARO RS OWNER



"I HAVE DREAMED OF OWNING A NEW Z28
EVER SINCE I WAS OLD ENOUGH TO SIT IN A
CAR AND PRETEND I WAS DRIVING."

-TOM SAGGARS,
1997 CAMARO Z28 OWNER

Buckle up, grab the leather-wrapped steering wheel with one hand and the short-throw Hurst shifter (optional in Z28 and SS) with the other. This is performance, the way it was meant to be.

We didn't forget the amenities, either. Air conditioning. Tilt-Wheel.[™] Intermittent wipers. A powerful multi-speaker stereo. It's all standard. And Camaro lets you choose from a Sport Cloth interior (in Medium Gray, Ebony or Ebony Accent) or an optional interior with leather seating surfaces (in Neutral or Ebony).

Remember the day you got your driver's license? This is better.

Optional leather seating surfaces in Neutral.
Other optional equipment also shown.

STANDARD INTERIOR FEATURES

- Bucket seats
- Tilt-Wheel[™] steering column
- Air conditioning
- Tinted glass
- AM/FM stereo with cassette player
- Cassette and CD storage
- Dual front and rear cup holders
- Auxiliary power outlet

"GREAT STYLING WRAPPED
AROUND GREAT PERFORMANCE. CAMARO
IS A TRUE LEGEND AMONG CARS."

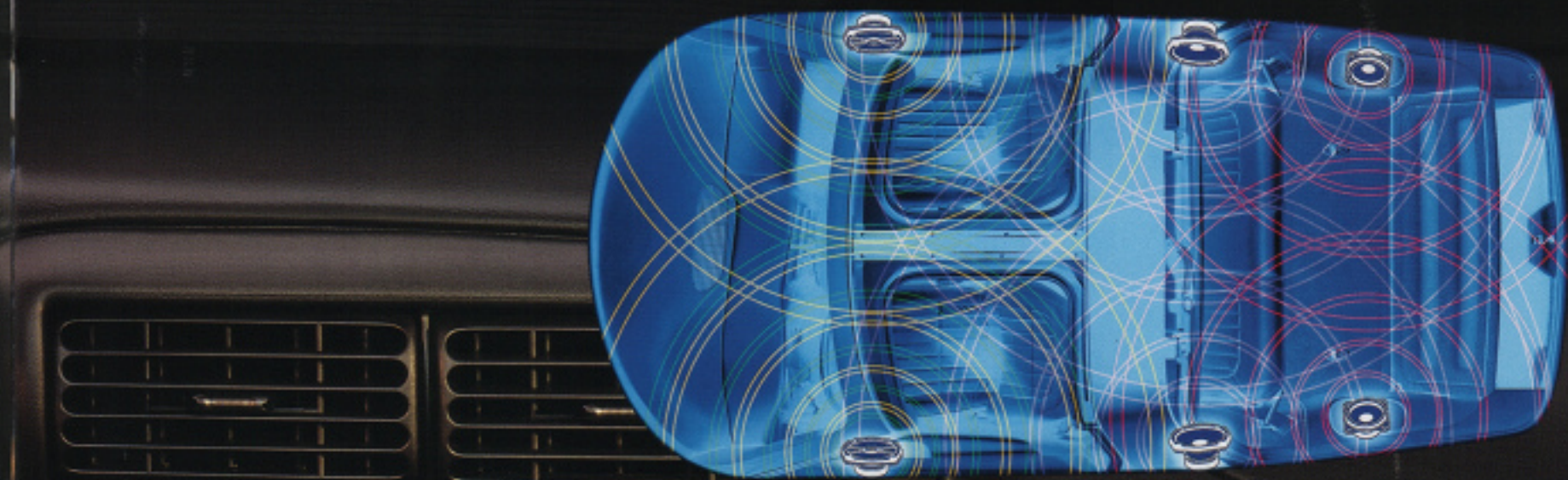
-BARRY HENSEL, 1976 CAMARO LT OWNER

IT'S LIKE AN F-16 - WITH A MONSOON SOUND SYSTEM AND A HURST SHIFTER.



"YOU FEEL GOOD JUST GETTING INTO THIS CAR. PUT IT IN FIRST, POP THE CLUTCH AND IT'LL PUT A SMILE ON YOUR FACE."

- JASON DEBLER,
1996 CAMARO SS OWNER



With Monsoon, you'll be drenched in sound. This eight-speaker sound system is tuned precisely to Camaro's interior acoustics.

With eight speakers and an amplifier with 500 watts of peak power, the high-output Monsoon stereo really rocks, and it's standard in every Camaro SS, Z28 and convertible.

Camaro's well-designed, ergonomically correct driving environment is further enhanced by complete instrumentation (including an engine oil life monitor that lets you know when to change the oil, a tachometer, and electronic readouts for the odometer and trip odometer). Optional: duplicate controls on the steering wheel for the Monsoon sound system.

The 2001 Camaro is here ... and it's yours to unleash.

Camaro SS instrument panel with duplicate steering wheel radio controls, Hurst shifter and other options.

Z28. IT'S JUST A LITTLE BIT STEALTHY.

BY CHERYL PILCHER

FOURTH-GENERATION CAMARO ENGINEERING TEAM



Camaro Z28 Coupe in Monterey Maroon Metallic with optional removable roof panels.

The Z28 is almost a "sleeper," because it looks similar to the V6 Camaro, but when you get it out on the road, there's a big difference. It's a great vehicle for someone who doesn't want all the scoops, spoilers, and exterior bells and whistles the SS has to offer.

As we worked on the fourth-generation Z28, we always knew that it was critical that this car have incredible performance, and by that I mean incredible horsepower and lots of low-end torque. We strived to make sure that was a part of the Z28's whole reason for being.

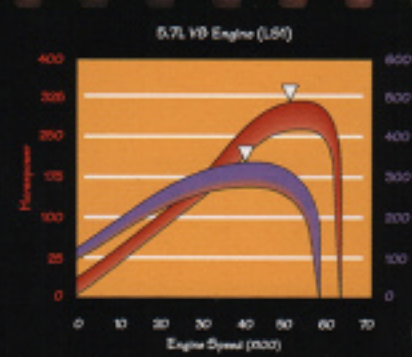
Owners really love to talk about the horsepower numbers and the performance numbers of the Z28 and its LS1 V8. With 310 horsepower under the hood, this is one serious coupe.



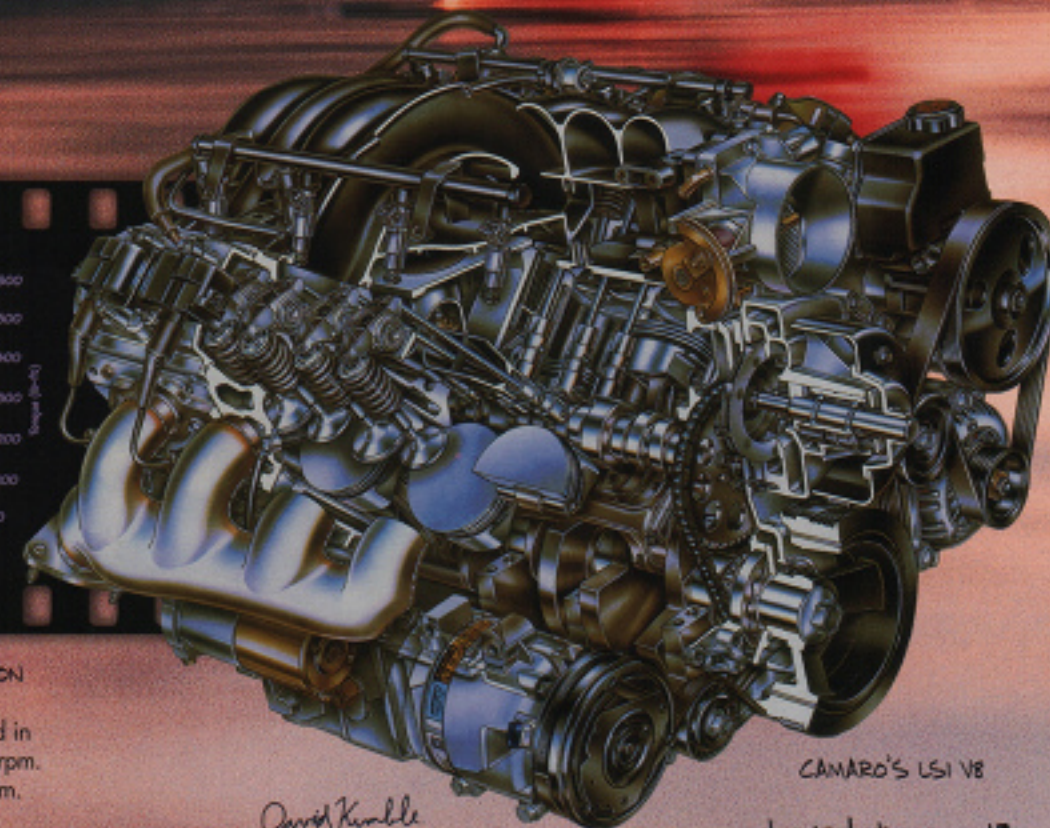
SOPHISTICATED SUSPENSION DESIGN
Here's what makes Z28 handle with precision while delivering a smooth, compliant ride: a tuned Short/Long Arm front suspension, gas monotube de Carbon shocks, and rack-and-pinion steering.



PERFORMANCE-TUNED TIRES AND WHEELS
The Z28 includes boldly styled cast-aluminum wheels and P235/55R-16 Goodyear Touring tires. P245/50ZR-16 Goodyear Eagle GS-C or all-season Eagle RS-A tires are optional.



TEACHING THE COMPETITION A THING OR TWO:
LS1 V8 horsepower as installed in the Camaro Z28: 310 at 5200 rpm. Torque: 340 lb.-ft. at 4000 rpm.



David Kunkle

CAMARO'S LS1 V8

chevrolet.com 13

CAMARO AND THE ART OF HIGH PERFORMANCE DRIVING.

Camaro Z28 in action at the Bragg-Smith Advanced Driving School.

"CAMARO MAKES YOU FEEL ABSOLUTELY
ONE WITH THE MACHINE."

-RUPERT BRAGG-SMITH



BY RUPERT BRAGG-SMITH
OWNER, BRAGG-SMITH ADVANCED DRIVING SCHOOL

The Bragg-Smith Advanced Driving School just outside Las Vegas, Nevada, uses the Camaro and Corvette exclusively to teach the art of high performance driving on the track. Operated by Rupert Bragg-Smith, professional driver and instructor, the school uses a racetrack environment to teach students the way to drive quickly, smoothly and safely on the racetrack. For more information, call 1-800-391-6891.

While I was involved in my racing career, I discovered that I enjoyed talking about and explaining the art of competitive driving. I decided I would like to have my own school. I have been here about eight years, and I purchased 295 acres and built my own 2.2-mile FAA road course. So far, thousands of people have participated in our one-day and three-day driving courses.

When I thought about the car we should use, and the car people really love, there was one clear choice — Chevy Camaro.

The confidence of Traction Control. When activated, Z28's optional all-speed Traction Control works with the standard Zexel-Torsen® limited slip rear axle to provide optimal tire-to-road grip, even on low-traction surfaces.

Bragg-Smith puts the Camaro Z28 through a high-speed maneuver at his Advanced Driving School just outside Las Vegas. "It's a very predictable, very quick car on the track," Bragg-Smith says.



THE 200-HP V6 CAMARO. WHY DRIVE ANYTHING LESS?



It's sleek. It's fast. And it costs less than you might imagine.

The Camaro Coupe with the 3800 Series II V6 engine delivers 200 horsepower at 5200 rpm (and 225 lb.-ft. of torque). A five-speed manual transmission is standard and a four-speed automatic is optional. Also optional: all-speed Electronic Traction Control.

This performance story is further enhanced by four-wheel disc

brakes with Bosch ABS, a Firm Ride and Handling Suspension, and P215/60R-16 Touring tires. You can get even closer to big brother Z28 with the optional Y87 Performance Handling Package (includes Zexel-Torsen® limited slip differential, fast-ratio power steering and dual-outlet exhaust).

Why drive anything less than a 2001 Camaro?

NO FORD MUSTANG CAN DO THIS.

The T-Top option, available on any Coupe and selected by more than 60 percent of buyers, really sets Camaro apart from the competition.* The well-designed Camaro T-Tops are lightweight, lockable and easily removed without any tools. The roof panels are deep-tinted, and detachable sunshades are included.

It's not a coupe. It's not a convertible. The T-Top Camaro is the best of both.

*Based on 2000 competitive data and GM Regular Sport segmentation. Excludes other GM vehicles.

Camaro Coupe in Navy Blue Metallic with optional T-Top and Sport Appearance Package (includes lower-body extensions all around and a special high-level rear spoiler extension).

CAMARO. IT'S PRACTICALLY AMAZING.

DEEP-SHINING EXTERIOR PAINT

Basecoat/clearcoat paint provides a deep wet-look shine that will last for years.

PROTECTION AGAINST BATTERY RUNDOWN

Battery-rundown protection shuts down the interior lights after 10 minutes, should you leave them on.

OPTIONAL ALL-SPEED TRACTION CONTROL

This feature optimizes the use of available traction during acceleration in snow, ice or wet-weather conditions.

STANDARD:

A SOPHISTICATED STEREO

An AM/FM stereo with cassette player is standard in Camaro Coupe. Features include integral clock, seek-scan and premium front and rear speakers.

Camaro Coupe in Monterey Maroon Metallic with optional aluminum wheels.

SPORTY COMFORT
Standard Sport Cloth interior in Medium Gray.

A REMARKABLE TRUNK

A wide-opening rear hatch and fold-down rear seat make cargo loading easy. Luggage space is an amazing 32.8 cu. ft. with the rear seat folded flat.

FIRM RIDE AND HANDLING SUSPENSION

Front and rear stabilizer bars and specially tuned springs provide a beautiful blend of ride and response.

AN ADVANCED BRAKING SYSTEM

Thanks to standard four-wheel disc brakes with a state-of-the-art Bosch antilock brake system (ABS), Camaro offers excellent braking performance.

LOW-MAINTENANCE FEATURES

There is no scheduled spark plug replacement for up to 100,000 miles. Extended-life engine coolant doesn't need to be changed for up to 150,000 miles or five years (whichever comes first). Maintenance needs vary with different uses and driving conditions. Please see the Owner's Manual for more information.

REMOTE KEYLESS ENTRY WITH HORN ALARM

The optional Remote Keyless Entry system (standard in Convertible) includes a horn alarm theft-deterrent feature.

A SOPHISTICATED THEFT DETERRENT
With the standard PASS-Key II theft-deterrent system, only your specially coded key starts your Camaro. PASS-Key II disables both the fuel and ignition systems if an attempt is made to start the car and the proper key is not used.

A TOUGH BODY

Dent-resistant and rustproof composite door panels, roof, hatchlid and front fenders are designed to help keep your Camaro looking new for years to come.

SUMMERS WERE MADE FOR CARS LIKE THIS.

Hot summers. Cool Camaros. They're made for each other. And the 2001 Camaro Convertible is everything you expect a great convertible to be.

Significantly, this stunning drop-top was designed from the outset to be a convertible. The resulting robust body structure provides a solid foundation that minimizes flexing, squeaks and rattles, while providing precise handling and steering. The fully lined power top (in White, Neutral or Black) includes a glass rear window with an electric defogger. For a sleek top-down appearance, there's a three-piece hard tonneau cover that easily slides into place.

Cruisin' — it's what this one's all about.

"ON A SUMMER DAY, I LOVE TAKING THE CAMARO CONVERTIBLE OUT. THAT OPEN-AIR FEELING ... YOU CAN'T BEAT IT. AND BECAUSE OF CAMARO'S AERODYNAMIC DESIGN, YOU CAN STILL HAVE A CONVERSATION WITH YOUR PASSENGER AT 70 MPH ON THE FREEWAY."

—CHERYL PILCHER, FOURTH-GENERATION CAMARO ENGINEERING TEAM

Camaro Convertible in Onyx Black with optional aluminum wheels.

"THE BEST-LOOKING CAMARO? IT'S GOT TO BE THE CONVERTIBLE. WITH THE TOP DOWN, IT IS JUST AWESOME."

—JOHN HEINRICH, CAMARO CHIEF ENGINEER

CAMARO CONVERTIBLE STANDARD FEATURES

- Fully lined power convertible top (White, Neutral or Black)
- Glass rear window with electric defogger
- Three-piece hard tonneau cover
 - Air conditioning
 - Cruise control
 - Foglamps
 - Electric trunk release
- Power windows and power door locks
- Power remote mirrors
- Theft-deterrent alarm

THIRTY-FOUR YEARS OF TOTAL DOMINATION.



BY HARRY TURNER
GM CAR AND TRUCK MOTORSPORTS ENGINEERING

Right from the start, Camaro was a perfect fit for us in Sports Car Club of America Trans-Am Series racing.

Two years ago we were asked to introduce Camaro into Pro Stock drag racing. The car has inherent qualities that make it a good drag vehicle. The aerodynamics of the body are fantastic. So we didn't have to do much there, because the production shape worked so well.

We've also got two primary teams that run Camaro on the NHRA funny car circuit. These modified machines produce about 6500 horsepower (which is a rough estimate, because we have no way of precisely measuring that much horsepower).

When we take Camaro to the track, we go to learn as well as win. That's how race car technology finds its way into the street Camaro you can buy today.



AMERICA'S FASTEST POLICE CAR
With a 310-hp V8 under its hood, the Special Service Police Camaro is one of America's fastest police cars.*

*Based on Michigan State Police 0-60 and 1/4-mile performance tests using Camaro "B4C" special service package against other vehicles with police packages.



FEROCIOUS FUNNY CAR
Chuck Etchell's Matco Tools Camaro Z28, with Whit Bazemore behind the wheel, is a formidable force in NHRA funny car racing, from Maine to California.

"CAMARO HAS BEEN INVOLVED
IN RACING, IN ONE FORM, OR
ANOTHER, SINCE 1967."

-HARRY TURNER,
GM CAR AND TRUCK
MOTORSPORTS ENGINEERING

ADVANCED SAFETY TECHNOLOGY IS DESIGNED IN.

In a 2001 Camaro, you'll discover a comprehensive standard safety package that includes four-wheel antilock brakes, Daytime Running Lamps, and a totally passive PASS-Key II theft-deterrent system.

Advanced safety technology — it's an important reason to choose Camaro.

***A NOTE ON CHILD SAFETY:** Always use safety belts and proper child restraints, even with air bags. Children are safer if they are secured in a rear seat. Never place a rear-facing infant restraint in the front seat of any vehicle equipped with an active air bag. See your vehicle's Owner's Manual and child safety seat instructions for more safety information.

2001 CAMARO COMPREHENSIVE SAFETY FEATURES

Occupant-Protection Features

- Energy-absorbing front and rear body structures
- A steel safety cage surrounding the passenger compartment
- Steel side-door beams
- Dual air bags*

Crash-Avoidance Features

- Four-wheel antilock brakes
- Daytime Running Lamps with Automatic Exterior Lamp Control

Personal Security Features

- PASS-Key II theft-deterrent system
- Available Remote Keyless Entry with illuminated interior feature
- Available theft-deterrent alarm system



STANDARD FOUR-WHEEL ABS
An advanced Bosch antilock brake system reduces wheel lockup while braking and is designed to help you maintain steering control and help prevent skidding while braking.



THE SAFETY OF ALL-SPEED TRACTION CONTROL
When activated, optional all-speed Traction Control works with all-season performance tires — and with the four-wheel ABS in V8-powered Camaros — to help provide enhanced control during acceleration in slippery conditions.



ENERGY-ABSORBING DESIGN
Front and rear crush zones are designed to help absorb energy in a controlled manner in the event of a collision to help preserve the integrity of the passenger compartment.



WE'LL BE THERE.

Chevrolet is there with the largest dealer network in the USA — and a comprehensive owner protection plan that will look after you from the moment you take delivery of your new Camaro. The plan includes:

- **New Vehicle Limited Warranty**
- **24-Hour Roadside Assistance**
- **Courtesy Transportation**

It's an owner protection plan you can believe in.

Your Chevrolet dealer has all the details. Through the years and across the miles, wherever America's going ... we'll be there.



**FOR MORE
INFORMATION ON 2001
CHEVROLET CAR OR
TRUCK PRODUCTS:**
Call **1-800-950-2438**
or visit us at **chevrolet.com**



**CHEVROLET CUSTOMER
ASSISTANCE CENTER**
Call **1-800-222-1020**
toll free to talk directly to
specialists who can handle
any product or service
concern you may have.



FROM DAY ONE ...
The gas tank is full, the
vehicle is checklist ready for
you to drive away, and a
full orientation awaits you
on everything about your
new Camaro.



NEW VEHICLE LIMITED WARRANTY

This warranty is for GM vehicles registered in the USA.
See your Chevrolet dealer for terms and conditions.
Covered for 3 years/36,000 miles (whichever comes first):

- The complete vehicle
- Tires
- Towing to your nearest Chevrolet dealership
- Cosmetic corrosion resulting from defects
- Repairs made to correct any vehicle defect
- No charge for most warranty repairs

Covered for 6 years/100,000 miles (whichever comes first):

- Rust-through corrosion



24-HOUR ROADSIDE ASSISTANCE

Call **1-800-CHEV-USA** toll free anytime during the warranty period. Towing and basic technical advice come with the Basic Care Package. Courtesy Care provides additional features* including locksmith services, flat tire changing, fuel delivery, non-warranty towing and jump starts. Some services will incur costs. Chevrolet reserves the right to modify or discontinue Basic Care and Courtesy Care at any time.

*During the term of the New Vehicle Limited Warranty.



COURTESY TRANSPORTATION

Ask your participating Chevrolet dealer for Courtesy Transportation if you drop your vehicle off for repairs under the New Vehicle Limited Warranty. Also see if you qualify for expense reimbursement and/or vehicle rental. Services vary at election of participating dealer.

Additional Information

Important: A Word About This Brochure

We have tried to make this brochure comprehensive and factual. We reserve the right, however, to make changes at any time, without notice, in prices, colors, materials, equipment specifications, models and availability. Since information may have been updated since the time of printing, please check with your Chevrolet dealer for complete details. Chevrolet reserves the right to lengthen or shorten the model year for any product for any reason, or to start and end model years at different times.

SmartLease By GMAC

For information about SmartLease, SmartBuy or any of the other quality GMAC financing options, see your Chevy dealer, call **1-800-32-SMART** or visit our web site at www.gmacfs.com

The GM Card® — What are you charging toward?

The GM Card rewards you 5% on every credit card purchase, making it the fastest way to save toward the GM car or truck of your dreams. For information or to apply for the GM Card, call **1-800-8GM-CARD** or visit our web site at www.gmcard.com.

The GM Mobility Program

Chevrolet recognizes the importance of mobility to everyone's life and, therefore, offers financial assistance to persons with disabilities through the General Motors Mobility Program. This program can provide up to \$1,000 reimbursement toward the cost of aftermarket mobility adaptive equipment for drivers or passengers when installed or reinstalled on any eligible purchased or leased new GM vehicle. For details and free resource information, call **1-800-323-9935** (TTY users: **1-800-833-9935**).

Updated Service Information

Chevrolet dealers receive useful service bulletins about Chevrolet products. You can order them by calling **1-800-551-4123**.

Assembly

Chevrolts and their components are assembled or produced by different operating units of General Motors, its subsidiaries or suppliers to GM worldwide. We sometimes find it necessary to produce Chevrolts with different or differently sourced components than originally scheduled. Since some options may be unavailable when your vehicle is assembled, we suggest that you verify that your vehicle includes the equipment you ordered or, if there are changes, that they are acceptable to you.

Engines

Chevrolts are equipped with engines produced by different operating units of GM, its subsidiaries or suppliers to GM worldwide.

Rust-Through Corrosion Protection

Chevrolts are designed and built to resist corrosion. All body sheet-metal components are warranted against rust-through for 6 years/100,000 miles (whichever comes first). Application of additional rust-inhibiting materials is not required and none is recommended. See your Chevrolet dealer for terms of this limited warranty.

GM Protection Plan®

The GM Protection Plan offers mechanical repair protection in addition to that provided by GM's New Vehicle Limited Warranty. Coverage for vehicle maintenance is also available. Ask your dealer about the GM Protection Plan. Coverage available only in the U.S. and Canada.

General Motors, GM, the GM Emblem, Chevrolet, the Chevrolet Emblem, Camaro, the Camaro Emblem, Camaro Legends Tour, Z28, PASS-Key, Solar Ray, ETR, Delco and 1-800-CHEV-USA are registered trademarks and Chevy and GM Parts are trademarks of the General Motors Corporation. GMAC, SmartLease and SmartBuy are registered service marks of the General Motors Acceptance Corporation. TheftLock is a registered mark of Delco Electronics Corp. Brickyard 400 is a registered trademark used with permission, IMS Corporation. ©2000 General Motors Corporation. All rights reserved.



Litho in USA. September 2000

CAMARO — A PRIZED COLLECTIBLE
Kevin Kolvenbach, a member of the Hudson Valley, N.Y., Camaro Club, has three Camaros in his garage: a '67, a '68 and a 2000 SS.

COMING TO A CHEVY DEALER NEAR YOU ... THE CAMARO LEGENDS TOUR.

"CAMARO RECAPTURES THE DRIVING FUN AND
THE EXCITEMENT OF THE LATE 1960S MUSCLE CARS.
THERE'S JUST NOTHING LIKE A REAR-DRIVE V8."

- BRIAN LAZURUS, 1998 CAMARO SS OWNER

For more than 34 years, Chevy Camaro has captivated American driving enthusiasts. It's been the unspoken birthday wish of teenagers about to get their driver's license. It's a legend on the street. No pretense, just muscular V8 and V6 engines, head-turning style and the uncompromising response that only rear drive can provide.

No wonder it has such a loyal following. And in 2001, the Camaro Legends Tour will be traveling to Chevrolet dealers all across the United States. The tour includes:

- A tour trailer with graphics representing all four generations of Camaro
- Interactive SEGA Daytona II racing games
- Camaro Legends video celebrating the history of Camaro
- A Camaro heritage display and NHRA driver's wall
- GM Parts and GM Accessories display
- Five Camaros: '68 Camaro SS, '70 Camaro RS/Z28, '92 Camaro Commemorative Edition, '93 Camaro Indy Pace Car and 2001 Camaro SS

For more Camaro Legends Tour information and a 2001 schedule, call Tour Central at 1-877-TOURS-GM.



From left to right: 2001 Camaro Z28 Convertible, 1993 Camaro Z28 Indy Pace Car, 1992 Camaro Z28 Coupe, 1970 Camaro Z28 Coupe and 1968 Camaro SS Coupe.

BUYER'S GUIDE: EXTERIOR FEATURES

Camaro Preferred Equipment Groups

NOTE: These optional Preferred Equipment Groups (PEGs) help simplify the buying process. Just choose the 2001 Camaro PEG containing the equipment you desire. You may also add selected individual options (see Standards & Options chart for model availability). Some restrictions may apply. Please see your salesperson for details.

Preferred Equipment Group Number	Coupe 1	Conv. 1	Z28 Coupe 1	Z28 Conv. 1
Power door lock system	■	S	■	S
Cruise control	■	S	■	S
Remote hatch/trunk release	■	S	■	S
Foglamps	■	S	■	S
Power windows with driver's Express-Down feature	■	S	■	S
Dual remote electric sport mirrors	■	S	■	S
Leather-wrapped steering wheel, transmission shifter and parking brake handle (steering wheel also features duplicate radio controls)		S	■	S
Remote Keyless Entry system with illuminated interior feature	■	S	■	S
Theft-deterrent alarm system	■	S	■	S
Six-way power driver's seat			■	S
Moldings: body-side, color-keyed		S	■	S
Floor mats, carpeted rear		S	■	S

■ — Included in Preferred Equipment Group. S — Standard.

Data

Exterior Dimensions (in.)

	Coupe	Conv.
Wheelbase	101.1	101.1
Length (overall)	193.5	193.5
Width (overall)	74.1	74.1
Height (overall)	51.2	51.8
Tread width — front	60.7	60.7
Tread width — rear	60.6	60.6

Trailer

Trailer classification	Light	Light
Gross trailer weight (lbs., up to)	1000	1000
Maximum tongue load (lbs.)	100	100

NOTE: Additional equipment required. See your dealer for further trailering information.

Standards & Options

NOTE: Some individually available options listed below may be included in specific Preferred Equipment Groups (see chart at left). Some restrictions may apply. Please see your salesperson for details.

Exterior	Camaro	Z28
Body-side moldings, color-keyed	O ¹	O ¹
Dent-resistant body panels (doors, roof, hatch lid, front fenders)	S	S
Dual sport mirrors (left-hand remote)	S	S
Full instrumentation with tachometer	S	S
Headlamps, composite, with Automatic Exterior Lamp Control	S	S
Sport Appearance Package	O	O
SS Performance/Appearance Package	—	O
Transparent removable roof panels with locks and sunshades (Coupe only)	O	O

Wheels/Tires

Wheel covers: 16-inch bolt-on	S	—
Wheels: 16 x 8-inch cast-aluminum	O	S
Wheels: 16 x 8-inch chromed aluminum	O	O
Wheels: 17 x 9-inch aluminum	—	O ²
Tires: P215/60R-16 Touring	S	—
Tires: P235/55R-16 Touring	O	S
Tires: P245/50ZR-16 all-season Performance	—	O
Tires: P245/50ZR-16 Performance	—	O
Tires: P275/40ZR-17 Performance	—	O ²

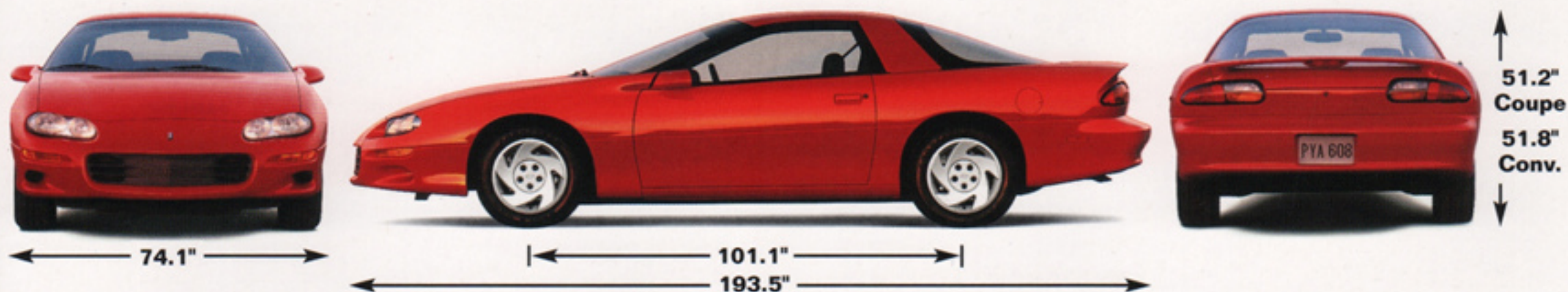
S — Standard. O — Optional. 1 Standard on Convertible. 2 Included with optional SS Performance/Appearance Package only.

NOTE: Tire chains should not be used on Camaro models equipped with P235/55R-16, P245/50ZR-16 or P275/40ZR-17 tires because they could cause damage to the vehicle.

NOTE: Vehicle speed may be limited due to tire speed ratings. See your dealer for details.

DIMENSIONS, WHEELS AND FABRICS

Exterior Dimensions (in.)



Wheel Choices



16-inch bolt-on wheel covers.
Standard on Camaro.



16-inch cast-aluminum
wheels. Standard on Z28,
optional on Camaro.



16-inch chromed-aluminum
wheels. Optional on
Camaro and Z28.



17-inch cast-aluminum
wheels. Included in
SS Performance/
Appearance Package.

Sport Cloth Trim

Medium Gray



Ebony



Accent



Optional Leather Seating Surfaces

Ebony



Neutral



INTERIOR/POWER TEAMS/CHASSIS

Standards & Options

NOTE: Some individually available options listed below may be included in specific Preferred Equipment Groups (see chart at left). Some restrictions may apply. Please see your salesperson for details.

Interior	Camaro	Z28
Air conditioning (with CFC-free refrigerant)	S	S
Battery-rundown protection	S	S
Carpeted front floor mats	S	S
Carpeted rear floor mats	O ¹	O ¹
Driver and front-passenger air bags ²	S	S
PASS-Key II theft-deterrent system	S	S
Power door locks	O ¹	O ¹
Six-way power driver's seat	O	O ³
Retained accessory power	S	S
Rear-window defogger	O ¹	O ¹
Remote Keyless Entry system (with horn alarm and illuminated interior feature)	O ¹	O ¹
Seats: Sport Cloth, with reclining front buckets	S	S
Seats: leather seating surfaces	O	O
Seats: rear, full-folding seatback	S	S
Tilt-Wheel™ steering column	S	S
Solar-Ray tinted glass — all windows	S	S

1 Standard on Convertible. **2** Always use safety belts and proper child restraints, even with air bags. Children are safer when properly secured in a rear seat. See the Owner's Manual for more safety information.

3 Standard in Z28 Convertible.

Data

Interior Dimensions (in.)	Coupe	Conv.
Headroom — front	37.2	38.7
Headroom — rear	35.2	39.4
Legroom — front	42.9	42.9
Legroom — rear	26.8	26.8
Hip room — front	53.5	53.5
Hip room — rear	45.9	43.7
Shoulder room — front	57.4	57.4
Shoulder room — rear	55.8	43.5

Capacities

Passenger capacity	4	4
Luggage capacity (cu. ft.)	12.9 ¹	7.6
Fuel tank capacity (gal., approx.)	16.8	16.8

1 32.8 cu. ft. with rear seat folded flat.

Power Teams/Chassis

	Camaro	Z28
V6 engine: 3800 with SFI (200 hp)	S	—
V8 engine: 5.7 Liter LS1 with SFI (310 hp; 325 hp with SS)	—	S
Transmission: 5-speed manual	S	—
Transmission: 6-speed manual	—	O ¹
Transmission: 4-speed automatic	O	S
Brakes: power 4-wheel disc with ABS	S	S
Hurst® short-throw shifter ²	—	O
Limited-slip rear axle (Zexel-Torsen®)	O ³	S
Performance axle ratio	O ³	O ⁴
Performance/Handling Package	O	—
Power rack-and-pinion steering	S	S
Stainless-steel exhaust system	S	S
Suspension: Firm Ride and Handling	S	—
Suspension: Performance Ride and Handling	—	S
All-Speed Traction Control	O	O ⁵

1 No-cost option. **2** Requires 6-speed manual transmission. **3** Included in optional V6 Performance Handling Package. **4** Standard with 6-speed manual transmission; optional with automatic transmission. **5** Optional all-season Performance tires recommended.

Delco Electronics ETR Sound Systems

NOTE: Sound systems include an Electronically Tuned Receiver (ETR) with AM/FM stereo, seek-scan and a digital clock. All optional stereos include speed-compensated volume, auto tone control and TheftLock security feature.

	Camaro	Z28
Stereo: AM/FM with cassette player	S	—
Stereo: AM/FM, Monsoon 500-watt sound system with cassette player	O ¹	S
Stereo: AM/FM, Monsoon 500-watt sound system with CD player	O	O
Remote 12-disc CD changer	O	O

1 Standard in Camaro Convertible.

Color Availability

Exterior Colors	Interior Colors			
	Medium Gray	Neutral ¹	Accent	Ebony
Onyx Black	■	■	■	■
Navy Blue Metallic	■	■	■	■
Bright Rally Red	■	■	■	■
Arctic White	■	■	■	■
Sunset Orange Metallic	■	■	■	■
Light Pewter Metallic	■	■	■	■
Mystic Teal Metallic ²	■	■	■	■
Monterey Maroon Metallic ²	■	■	■	■

1 Available in leather only. **2** Not available on Camaro SS.

EXTERIOR COLORS



Onyx Black



Sunset Orange Metallic



Navy Blue Metallic



Light Pewter Metallic



Bright Rally Red



Mystic Teal Metallic



Arctic White



Monterey Maroon Metallic

For additional information about Chevrolet vehicles, visit

chevrolet.com



America Online Keyword: Chevy Camaro



C A M A R O



WE'LL BE THERE™