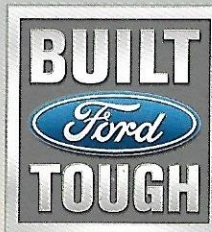


04

RANGER





**INTRODUCING THE NEW
2004 FORD RANGER**



FX4 p.2



XLT p.4

THE NEW 2004 FORD RANGER

AS TOUGH AS FLEXED BICEPS.

ATTITUDE? PLENTY. THE 2004 FORD RANGER DOESN'T JUST DRIVE THE STREETS. IT OWNS THEM. ITS NEW, BOLDER LOOK IS SO IN-YOUR-FACE WE ALMOST HAVE TO APOLOGIZE. WELL... ALMOST. TAKE YOUR PICK FROM THE DOWN 'N DIRTY XL, FULLY LOADED XLT, EYE-POPPIN' EDGE, ROCK-HUNGRY FX4 OR EARTH-SHAKIN' TREMOR WITH ITS HIGH-END (A.K.A. BOOMIN') AUDIO SYSTEM. WHATEVER YOU CHOOSE, BUILT FORD TOUGH MUSCLE HAS YOUR BACK. SO GET READY, BROTHER.

THE PUBLIC HAS SPOKEN. AMERICA LOVES RANGER.

WHO SAYS LIFE ISN'T A POPULARITY CONTEST? MUST BE THE OTHER COMPACT PICKUP GUYS. FOR 16 YEARS IN A ROW, FORD RANGER HAS OUTSOLD THE COMPETITION BY HAVING THE RIGHT SIZE, THE RIGHT ATTITUDE, THE RIGHT POWER AND THE RIGHT OPTIONS. BUT DON'T JUST TAKE OUR WORD FOR IT. FORD RANGER HAS ALSO BEEN RECOGNIZED BY POLK FOR HAVING THE HIGHEST MODEL LOYALTY IN THE COMPACT PICKUP TRUCK SEGMENT* 3 YEARS IN A ROW. THE PUBLIC HAS INDEED SPOKEN. LOUDLY.

*ACCORDING TO POLK STATISTICS FOR THE COMPACT PICKUP TRUCK CATEGORY IN THE 2001, 2002 AND 2003 MODEL YEARS, FORD RANGER RANKED HIGHEST BY HAVING THE GREATEST PERCENTAGE OF HOUSEHOLDS RETURN TO PURCHASE OR LEASE ANOTHER FORD RANGER VEHICLE.



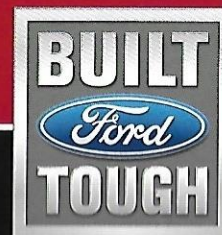
EDGE p.6



TREMOR p.8



AUDIO p.10 INTERIORS p.12



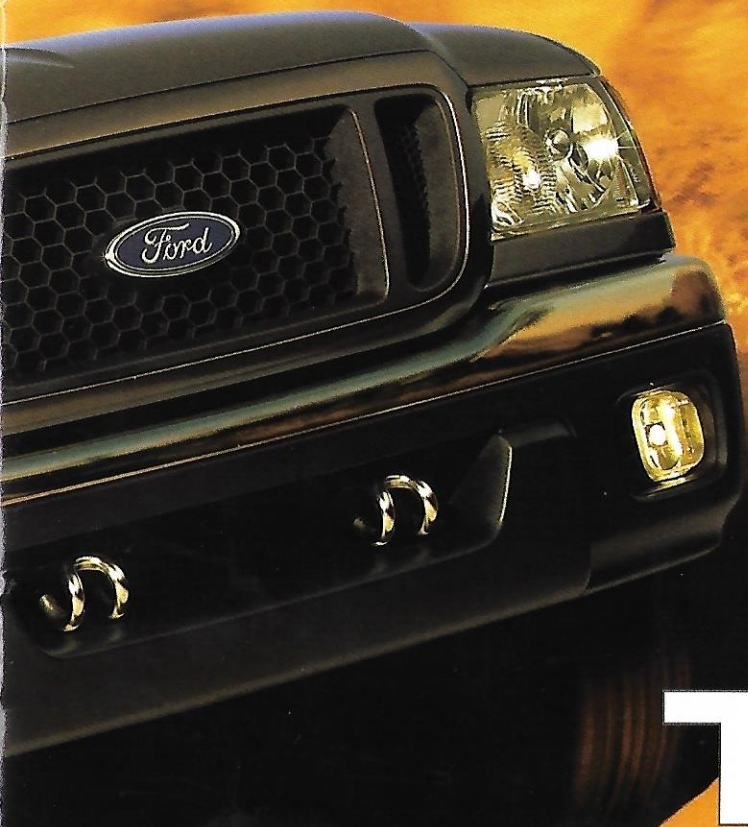
FX4 LEVEL II

ALRIGHT, ALRIGHT. WE KNOW WE CAN'T STOP YOU. YOU DO WHAT YOU WANT, WHEN YOU WANT. THE LEAST WE CAN DO IS PROPERLY EQUIP YOU FOR THOSE IMPULSIVE MOMENTS. YOU KNOW, THE ONES WHEN YOU DECIDE TO JUMP THE CURB AND LEAVE THE PAVEMENT BEHIND. THAT'S WHY WE MAKE FORD RANGER FX4 LEVEL II. BECAUSE YOU NEED OUR ULTIMATE OFF-ROAD COMPACT PICKUP TRUCK. IT HAS THE STUFF YOU WANT AND, MORE IMPORTANTLY, THE NAMES YOU RECOGNIZE: BFGOODRICH® OFF-ROAD TIRES, ALCOA® FORGED-ALUMINUM WHEELS, BILSTEIN® GAS SHOCKS, A TORSEN® REAR DIFFERENTIAL AND FORD'S LOW-END TORQUE-TOUTING 4.0L V6 ENGINE. OKAY. WE ADMIT IT. WE'RE ENCOURAGING YOU.



FX4





FX4 OFF-ROAD SUPERCAB WITH OPTIONAL FLARESIDE BOX IN BRIGHT RED.

YOUR OTHER CHOICE FOR 4x4 ADVENTURE IS RANGER FX4 OFF-ROAD. IT INCLUDES ALL-TERRAIN TIRES, PREMIUM GAS SHOCKS, TOW HOOKS, SKID PLATES AND A LIMITED-SLIP REAR AXLE.

FX4 OFF-ROAD 4x4

UH-OH. HERE COMES TROUBLE.

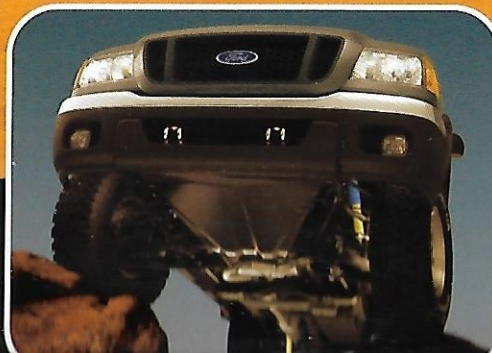
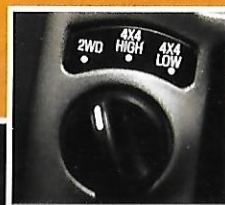
FX4 LEVEL II CAPABILITIES

LIFE'S UPS AND DOWNS ARE EASY TO MANAGE WHEN YOU'VE GOT BILSTEIN GAS SHOCK ABSORBERS AND STEEL SKID PLATES COVERING THE ENGINE/OIL PAN, TRANSFER CASE AND FUEL TANK.

GO BIG OR STAY HOME. RANGER FX4 LEVEL II COMES SHOED WITH MONSTER 31x10.5 BFGOODRICH KOS GRAFTED TO ALCOA 15" 8-HOLE FORGED-ALUMINUM WHEELS.

TORSEN. IT'S A NAME THAT'S SYNONYMOUS WITH HEAVY-DUTY OFF-ROAD EQUIPMENT, AND OBVIOUSLY ONE THAT RANGER FX4 HAD TO HAVE. FOR MORE INFORMATION, PLEASE VISIT OUR LIMITED-SLIP REAR DIFFERENTIAL.

SWITCHES THIS POWERFUL ARE USUALLY CLASSIFIED. GIVE IT A TURN AND FEEL THE 4x4 RUSH.





XLT 4x4

THE FORD RANGER XLT 4x4 IS NOT A TRUCK TO BE TAKEN LIGHTLY. IT'S BAD. IT'S BEAUTIFUL. AND IT'S BUILT FORD TOUGH. RANGER XLT DOESN'T JUST GET ATTENTION. IT DEMANDS IT. BUT DON'T LET THE SHINY GOOD LOOKS FOOL YOU. BENEATH IT ALL, XLT 4x4 IS REALLY THE ATHLETIC TYPE. JUST CHECK OUT THIS YEAR'S STATS: PAYLOAD - UP TO 1560 LBS. TOWING* - UP TO 5560 LBS. YEAH, IT'S A PLAYER. THINK YOU CAN HANDLE IT?

XLT





RANGER XLT SUPERCAB 4x2 SHOWN IN DARK GREEN SATIN METALLIC WITH AVAILABLE XLT APPEARANCE PACKAGE.

WITH ITS STANDARD 3.0L V6 AND 5-SPEED AUTOMATIC, RANGER XLT SUPERCAB 4x2 IS ONE FORMIDABLE PLAYING PARTNER. THE REAR VINYL JUMP SEATS FOLD DOWN TO ACCOMMODATE SOME MORE FRIENDS, OR THEY FLIP UP TO MAKE ROOM FOR WHATEVER YOU'RE TAKING TO THE PARTY.

XLT 4x2

BE CAREFUL. IT'S LOADED.

XLT FEATURES

ANOTHER SIMPLE, BUT VERY USEFUL DESIGN. HEAVY-DUTY TIE-DOWN HOOKS HELP INCREASE YOUR PEACE OF MIND BY HELPING TO KEEP YOUR LOAD SECURE. NO TRUCK IS COMPLETE WITHOUT THEM.

WHEN PROPERLY EQUIPPED* WITH THE OPTIONAL CLASS III HITCH RECEIVER - WE LIKE TO CALL IT RANGER'S BIG TOW - RANGER 4x2 SUPERCAB FOOTS UP TO 5860 LBS. OF PLEASURE CRAFT.

IF YOUR TUNES HAVE GONE DIGITAL, SELECT THE AM/FM STEREO WITH 6-DISC IN-DASH MP3/CD PLAYER AND 4 SPEAKERS.



*SEE YOUR FORD DEALER FOR A COPY OF THE TRAILER TOWING GUIDE.



EDGE 4x4

YO! YOU'VE REACHED THE HOME BASE OF FORD RANGER EDGE. SORRY, WE AIN'T IN. AGAIN. AS A MATTER OF FACT, WE'RE PROBABLY OUT TURNIN' HEADS RIGHT NOW WITH OUR SLICK POWER-DOME HOOD AND ALUMINUM 16-INCHERS. OR PUSHIN' THE TEMPO WITH OUR SHIFT-ON-THE-FLY 4x4 AND 207-HP 4.0L V6. OR JUST KICKIN' IT WITH OUR AM/FM STEREO DUAL-MEDIA MP3/CD/CASSETTE PLAYER. ALL STUFF YOU COULD BE DOING WITH US INSTEAD OF READIN' THIS CATALOG. SO... YOU KNOW WHAT TO DO AFTER THE BEEP. HEAD TO THE FORD DEALERSHIP TO GET YOUR OWN. PEACE OUT.

EDGE



JUST LEAVE A MESSAGE.

EDGE 4x2 DELUXE

FOR THOSE WHO PREFER 2-WHEEL DRIVE, WE OFFER THE RANGER 4x2 SUPERCAB EDGE DELUXE SHOWN HERE IN BRIGHT RED. SOUND LIKE A MOUTHFUL? YOU SHOULD READ ITS LIST OF STANDARD FEATURES. CAST ALUMINUM WHEELS. ANTI-LOCK BRAKING SYSTEM. FOG LAMPS. STYLED MIRRORS. BLACK MESH GRILLE. REAR JUMP SEATS. SPORT BUCKET SEATS. THERE'S EVEN A 290-WATT PIONEER® SOUND SYSTEM WITH 7 SPEAKERS. WE'D ROLL OUT THE RED CARPET, BUT THE PAVEMENT MIGHT GET JEALOUS.

FEATURES ON THE EDGE

LISTEN UP! FORD RANGER EDGE OFFERS AN OPTIONAL AM/FM STEREO 6-DISC IN-DASH MP3/CD PLAYER WITH CLOCK AND 4 SPEAKERS.

AS PART OF ITS SPONSORSHIP OF THE VANS TRIPLE CROWN SERIES, FORD ESTABLISHED THE RANGER TEAM ATHLETE PROGRAM TO RECOGNIZE AN ATHLETE IN EACH OF THE SERIES' 6 CORE SPORTS: WAKEBOARDING, BMX, SURFING, SNOWBOARDING, FREESTYLE MOTOCROSS AND SKATEBOARDING.

IF YOU CAN JUDGE A MAN BY HIS SHOES, THEN YOU CAN JUDGE A TRUCK BY ITS WHEELS. AND THESE OPTIONAL 18" CAST ALUMINUM BABIES ON RANGER EDGE 4x2 PASS THE TEST.

RALLY STYLE. EDGE'S NEW WHITE-FACED GAUGES WITH BLACK TRIM RINGS ARE CLEAN AND EASY TO READ.



NEW TREMOR 4x4

A PIONEER® 6-DISC IN-DASH MP3/CD PLAYER. A MULTI-CHANNEL AMPLIFIER. A 10" DOWN-MOUNTED SUBWOOFER. AND, FOUR 6" x 8" COAXIAL SPEAKERS. THAT'S 510 BONE-SHAKING, CRYSTAL-CLEAR-SOUNDING WATTS PUSHED THROUGH 9 SPEAKERS STRATEGICALLY PLACED TO DELIVER SUPERIOR PIONEER SOUND. AND DID WE MENTION THAT YOU CAN GET IT ALL WITH A BED ATTACHED? THE FORD RANGER TREMOR, NOW AVAILABLE IN 4x4 WITH 207-HP 4.0L V6, HAS ALL THE ATTITUDE YOU'LL EVER NEED. IF IT DOESN'T GET YOU THE CROWD REACTION YOU'RE LOOKING FOR, YOU MAY WANT TO HANG WITH A NEW CROWD.

TREMOR



OFF THE RICHTER SCALE.

TREMOR FEATURES

IT SOUNDS AS GOOD AS IT LOOKS. RANGER TREMOR'S PREMIUM PIONEER® SOUND SYSTEM DELIVERS A MASSIVE 510 WATTS OF GLOW-IN-THE-DARK JAM POWER.



THEY'LL HEAR YA BEFORE THEY SEE YA. RANGER TREMOR'S PIONEER® SOUND SYSTEM ENCLOSURE COMES EQUIPPED WITH A HIGH-OUTPUT, MULTI-CHANNEL AMPLIFIER AND 10" DOWN-MOUNTED SUBWOOFER.



NOT JUST ANOTHER PRETTY FACE. RANGER TREMOR'S INSTRUMENT CLUSTER SPORTS DISTINCT, EASY-TO-READ WHITE-FACED GAUGES WITH BLACK TRIM RINGS.

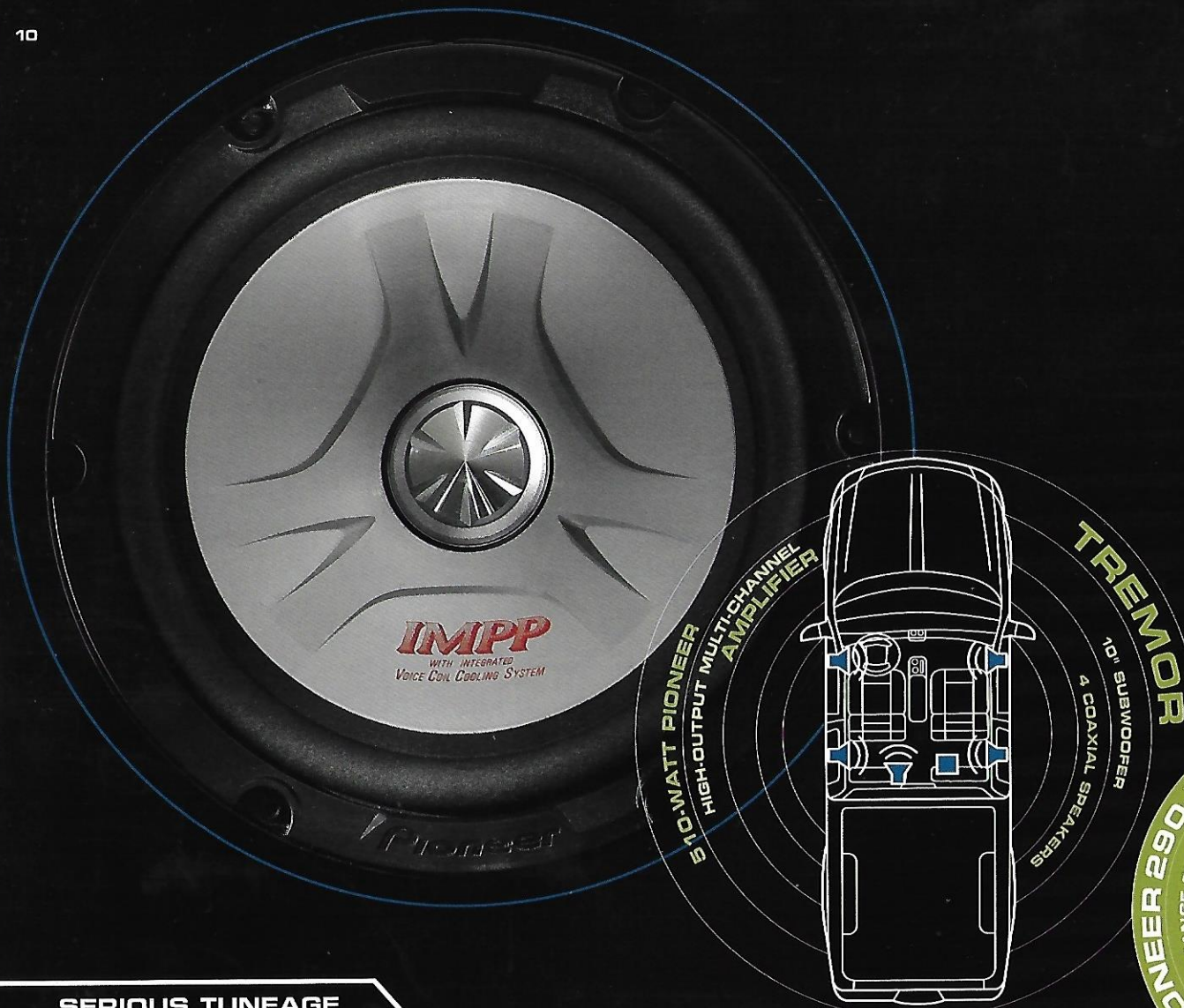


IF RANGER TREMOR'S AUDIO SYSTEM IS TURNED OFF, LET ITS 16" 5-SPOKE MACHINED-ALUMINUM WHEELS DO THE HEAD TURNING FOR YOU.



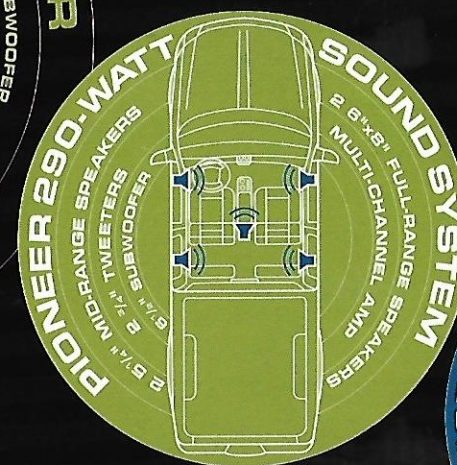
WHEN IT COMES TO SPEAKERS,
IT'S LOCATION, LOCATION, LOCATION.

YOU WOULDN'T CONSIDER MOVING YOUR EARS TO A DIFFERENT PLACE ON YOUR HEAD. THAT WOULD BE FOOLISH, WOULDN'T IT? THEN WHY WOULD PICKUP TRUCKS HAVE SPEAKERS IN A PLACE WHERE YOU CAN'T HEAR THEM? SOUNDS SILLY, BUT IT HAPPENS ALL THE TIME. BUT NOT WITH FORD RANGER. OUR SOUND ENGINEERS HAVE STRATEGICALLY PLACED RANGER'S SPEAKERS FOR OPTIMUM SOUND PERFORMANCE. NOT A WATT GOES WASTED BECAUSE WE UNDERSTAND HOW IMPORTANT THE MUSIC IS. WHETHER YOU'RE LISTENING TO A TRIUMPHANT OVERTURE, A KILLER GUITAR SOLO OR A BOOTY-SHAKIN' BASS LINE, RANGER IMMERSSES YOU IN SOUND. SO GO AHEAD, DIVE IN.



SERIOUS TUNEAGE

IF YOU AGREE THAT A SOUND SYSTEM IS THE MOST IMPORTANT PART OF YOUR VEHICLE, YOU'VE COME TO THE RIGHT PAGE. RANGER PLACES A PREMIUM ON GREAT SOUND SYSTEMS. AND THERE ARE SO MANY, THE HARDEST PART IS SELECTING JUST ONE. WANT 510 WATTS OF POWER? YOU GOT IT. WANT A 6-DISC IN-DASH MP3/CD PLAYER? NO PROBLEM. WHY ROLL UP TO AN AFTERMARKET SOUND EQUIPMENT STORE WHEN YOU CAN JUST ROLL OUT OF THE DEALERSHIP READY TO ROCK? LISTEN CAREFULLY, RANGER IS SERIOUS ABOUT SOUND. COPY THAT?



AUDIO



290-WATT PIONEER SOUND SYSTEM

THE OPTIONAL PIONEER® SOUND PACKAGE FEATURES A 290-WATT, 7-SPEAKER SOUND SYSTEM. IT INCLUDES AN AM/FM 6-DISC IN-DASH MP3/CD PLAYER, CENTER CONSOLE-MOUNTED 6.5" BASS SUBWOOFER, 2-WAY FRONT-DOOR SPEAKERS AND DUAL-CONE REAR SPEAKERS. WHILE YOU MAY NOT BE ABLE TO HEAR YOUR PASSENGERS' APPROVAL, THEIR SYNCHRONIZED HEAD BOBBING SHOULD SPEAK FOR ITSELF. AVAILABLE ON SELECT RANGER EDGE AND XLT SUPERCAB MODELS.



EAR CANDY.



DUAL-MEDIA

STANDARD ON RANGER EDGE 4x4 AND INCLUDED ON SELECT XLT AND EDGE 4x2 MODELS IS THE ELECTRONIC AM/FM STEREO DUAL-MEDIA MP3/CD/CASSETTE SOUND SYSTEM. IT INCLUDES A CLOCK AND 4 STRATEGICALLY PLACED SPEAKERS.

AUDIO SYSTEMS

THIS AM/FM STEREO SOUND SYSTEM WITH 6-DISC IN-DASH MP3/CD PLAYER, CLOCK AND 4 SPEAKERS CAN CARRY ENOUGH MUSIC TO TAKE YOU COAST TO COAST ON A SINGLE DOWNLOAD. AVAILABLE ON SELECT RANGER EDGE AND XLT MODELS.

STANDARD ON SELECT RANGER XLT MODELS IS THE ELECTRONIC AM/FM STEREO/SINGLE-CD PLAYER WITH CLOCK AND 4 SPEAKERS.



FX4 LEVEL II INTERIOR

COOLER FILLED WITH H₂O. ROCK-CLIMBING GEAR, TENT AND MOUNTAIN BIKE IN THE BED. CELL PHONE CHARGED AND READY TO GO. DUFFEL BAG FILLED WITH WHATEVER'S CLEAN. NOW THAT YOU'VE GOT EVERYTHING YOU NEED FOR THE WEEKEND, IT'S TIME TO SETTLE IN FOR THE RIDE. WITH RANGER'S NEW SPORT FRONT BUCKET SEATS, THAT'S EASY. IT'S THE KIND OF INTERIOR FEATURE THAT IMPROVES YOUR ENTIRE DRIVING EXPERIENCE, ESPECIALLY WHEN YOU ADD THE POWER EQUIPMENT GROUP WITH POWER WINDOWS, DOOR LOCKS AND SIDEVIEW MIRRORS AND REMOTE KEYLESS ENTRY. TAKE A SEAT AND YOU'LL KNOW EXACTLY WHAT WE'RE TALKING ABOUT.

INTERIORS

RANGER KNOWS HOW TO GAUGE GOOD LOOKS.



XL AND XLT

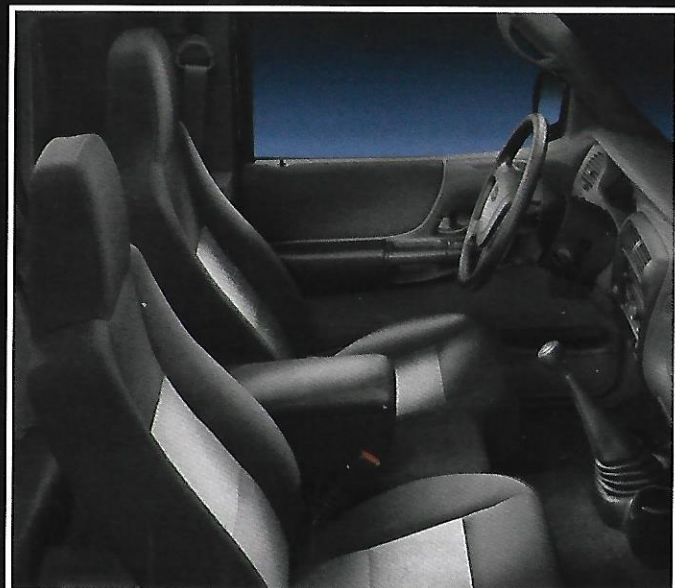


EDGE AND TREMOR



FX4 LEVEL II

DRIVEN BY ADVENTURE.



60/40 CLOTH

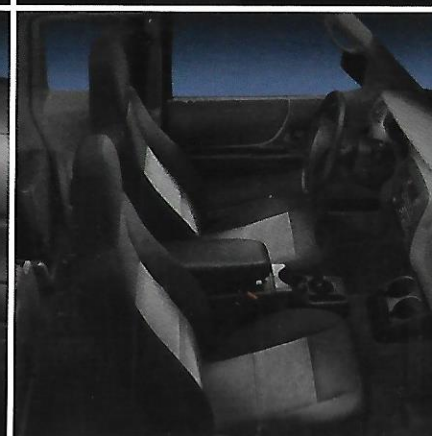
GET IN. GET OUT. GET IN. GET OUT. GET IT ON. FORD RANGER KNOWS THE ROUTINE. THAT'S WHY IT OFFERS A CLOTH 60/40 SPLIT FRONT SEAT. IT'S INDEPENDENTLY ADJUSTABLE FOR DRIVER AND PASSENGER COMFORT, AND DURABLE ENOUGH FOR DAY-TO-DAY TRUCK USE.

INSTRUMENT PANEL

WHEN IT COMES TO THE INSTRUMENT PANEL, FORD RANGER EDGE HAS EVERYTHING YOU WANT, RIGHT WHERE YOU WANT IT. ERGONOMICALLY PLACED CONTROLS. EASY-TO-READ GAUGES. DRIVER AND RIGHT-FRONT PASSENGER AIRBAGS.* A TRIP ODOMETER. AND AN AM/FM STEREO WITH DUAL-MEDIA MP3/CD/CASSETTE PLAYER AND CLOCK. AND YES, IT'S TRUE. WE INTENTIONALLY DID NOT LEAVE SPACE FOR A FLOWER HOLDER.

SPORT BUCKETS

WELCOME TO THE COCKPIT. FORD RANGER'S AVAILABLE FRONT CLOTH SPORT BUCKET SEATS ARE COMFORTABLY FITTED TO PROVIDE YOU WITH A COMMANDING FEEL OF THE ROAD. PREPARE FOR TAKEOFF. THREE... TWO... ONE... IGNITION.



*ALWAYS WEAR YOUR SAFETY BELT AND DEACTIVATE THE PASSENGER AIRBAG WHEN USING A REAR-FACING CHILD SAFETY SEAT.



XL

MAJOR STANDARD FEATURES:

- Black nostril bars grille and surround
- Black bumpers
- 15" Argent steel wheels
- Gas-charged shocks
- Rally gauge cluster with tachometer*
- AM/FM stereo with clock
- Black vinyl flooring
- 60/40 vinyl split-bench seat (cloth on SuperCab)
- 4-spoke steering wheel with airbag*

AVAILABLE MODELS:

- 4x2 Regular Cab
- 4x2 SuperCab 2-door

AVAILABLE ENGINES:

- 2.3L DOHC 16-valve I4
- 3.0L OHV 12-valve V6



XLT

MAJOR STANDARD FEATURES:

- Black nostril bars grille with black surround
- Chrome bumpers (XLT Appearance Package and 4x4)
- 15" 7-spoke silver or chrome styled-steel wheels (4x2)
- 16" cast aluminum wheels (4x4)
- 16" 5-spoke aluminum wheels (4x4 Value)
- Gas-charged shocks
- Fog lamps (4x4)
- Electronic shift-on-the-fly 4x4 system
- Side step bars (4x4)
- Black gauge cluster with white accents
- AM/FM stereo CD player with clock
- Carpeted flooring with mats
- 60/40 vinyl split-bench seat (cloth on SuperCab)
- Air conditioning

AVAILABLE MODELS:

- 4x2 Regular Cab
- 4x2 SuperCab 2-door
- 4x2 SuperCab 4-door
- 4x4 SuperCab 2-door
- 4x4 SuperCab 4-door

AVAILABLE ENGINES:

- 2.3L DOHC 16-valve I4
- 3.0L OHV 12-valve V6
- 4.0L SOHC 12-valve V6



FX4 OFF-ROAD

MAJOR STANDARD FEATURES:

- Black nostril bars grille with chrome surround
- Chrome bumpers
- Black wheel-lip moldings**
- 16" 5-spoke cast aluminum wheels
- P245/75R16 all-terrain OWL tires
- Premium gas-charged shocks
- Fog lamps
- Electronic shift-on-the-fly 4x4 system
- Side step bars
- Limited-slip rear axle
- Skid plates (2) and tow hooks (2)
- Black gauge cluster with white accents
- AM/FM stereo CD player with clock
- Carpeted flooring with mats
- 60/40 cloth split-bench seat
- Power Equipment Group
- Air conditioning

AVAILABLE MODELS:

- 4x4 SuperCab 4-door

AVAILABLE ENGINES:

- 4.0L SOHC 12-valve V6

*Standard on all trim series.

**Standard on Styleside only.

MODELS



FX4 LEVEL II

MAJOR STANDARD FEATURES:

- Black nostril mesh grille with body-color surround
- Chrome bumpers
- Black wheel-lip moldings
- 15" Alcoa® forged-aluminum wheels
- BFG KO 31 x 10.5 all-terrain RWL tires
- Bilstein® gas-charged shocks
- Fog lamps
- Electronic shift-on-the-fly 4x4 system
- Torsen® limited-slip rear axle
- Skid plates (3) and tow hooks (3)
- Black gauge cluster with white accents and silver brushed trim rings
- AM/FM stereo MP3/CD/cassette player with clock
- Carpeted flooring with slush mats
- Sport bucket seats with console
- Power Equipment Group
- Air conditioning

AVAILABLE MODELS:

- 4x4 SuperCab 4-door

AVAILABLE ENGINES:

- 4.0L SOHC 12-valve V6



EDGE

MAJOR STANDARD FEATURES:

- Black nostril honeycomb mesh grille with body-color surround
- Body-color bumpers
- Body-color wheel-lip moldings
- 15" 7-spoke silver steel or 15" 7-spoke machined-aluminum wheels (4x2)
- 16" 5-spoke cast aluminum wheels (4x4)
- Gas-charged shocks
- Fog lamps
- Electronic shift-on-the-fly 4x4 system
- Side step bars (4x4)
- White gauge cluster with black accents and black trim rings
- AM/FM stereo MP3/CD/cassette player with clock
- Black textured-vinyl flooring
- 60/40 cloth split-bench seat
- Air conditioning

AVAILABLE MODELS:

- 4x2 Regular Cab
- 4x4 Regular Cab
- 4x2 SuperCab 2-door
- 4x2 SuperCab 4-door
- 4x4 SuperCab 2-door
- 4x4 SuperCab 4-door

AVAILABLE ENGINES:

- 3.0L OHV 12-valve V6
- 4.0L SOHC 12-valve V6



TREMOR

MAJOR STANDARD FEATURES:

- Black nostril mesh grille with body-color surround
- Body-color bumpers
- Body-color wheel-lip moldings**
- 16" 5-spoke machined-aluminum wheels
- Gas-charged shocks
- Fog lamps
- Electronic shift-on-the-fly 4x4 system
- Side step bars (4x4)
- Tremor 510-watt sound system
- AM/FM stereo MP3/6-disc in-dash CD player
- Multi-channel amplifier
- Four 6" x 8" coaxial speakers
- 10" bass subwoofer
- Power Equipment Group
- 60/40 cloth split-bench seat
- Air conditioning

AVAILABLE MODELS:

- 4x2 SuperCab 2-door
- 4x2 SuperCab 4-door
- 4x4 SuperCab 4-door

AVAILABLE ENGINES:

- 3.0L OHV 12-valve V6
- 4.0L SOHC 12-valve V6

WHO'S YOUR DADDY?

SPECIAL PACKAGES

With 6 models to choose from and a choice of drivetrain and powertrain configurations, Ford Ranger offers exceptional value. By personalizing your Ranger with one or more of the following packages, you can add even more value. To make the best even better, talk to your Ford Dealer.



XLT 4x4 Value Appearance Package

- 2-Door SuperCab
- 4.0L V6
- 5-Speed Manual Transmission
- Electronic Shift-On-The-Fly 4x4 Mode
- 4.10:1 Axle Ratio
- Styleside Box
- Front Tow Hooks
- 16" 5-Spoke Cast Aluminum Wheels
- P245/75R16 All-Terrain OWL Tires
- Chrome Front and Rear Bumpers
- 60/40 Split-Bench Cloth Seat
- AM/FM Stereo with CD Player and 4 Speakers
- Textured Vinyl Flooring



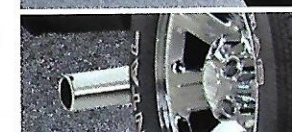
XLT Appearance Package



- Chrome Grille Surround
- Chrome Front and Rear Bumpers
- P225/70R15 All-Season OWL Tires
- 15" 7-Spoke Chrome Styled-Steel or 15" Machined-Aluminum Wheels



Bright Trim Group



- Chrome Step Bars
- Chrome Exhaust Tip



Bright Appearance Package

- Bright Trim Group (shown above)
- Chrome Bed Rails



BFT Component Package

- Limited-Slip Rear Axle
- Payload Package #2
- Class III Trailer Tow



1



2



3



4



5

1 Take your Ranger to a new level of style with these **chrome tail lamp surrounds**.

2 **Color-keyed running boards** blend in nicely.

3 With the **keyless entry keypad**, locking the keys in the truck is no longer cause for alarm. Just enter your programmed code and you're in. And since it operates by radio frequency, there's no hardware required for mounting.

4 OK guys, now there's really no need to ask for directions. The **Satellite Navigation System** helps you keep your bearings.

5 Start your engines, then get in. Crazy? Like a fox. Hit the blue **remote start** button and start your truck from up to 500 feet away. Perfect for those cold mornings.

6 The **Beddy Jo Bike Carrier** by Yakima® attaches directly to the bed and secures up to 2 bikes. Also offered is the black rubber **bed mat**, designed to protect the bed surface.

7 Step out in style. **Chrome step bars** at your service.

8 We're sorry, but all the stuff you see in the photo is not included in the price of the **bed tent**. And we especially mean the cool Ranger under it.



6

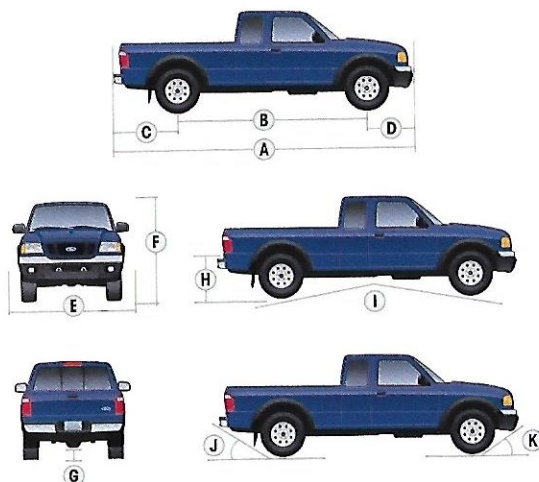


7



8

DIMENSIONS



	Regular Cab 4x2/4x4	SuperCab 4x2/4x4	SuperCab FX4 Level II
Exterior			
A. Overall length			
6' box	188.6"	202.9"	202.9"
7' box	200.6"	—	—
B. Wheelbase			
6' box	111.4"/111.6"	125.7"/125.9"	125.9"
7' box	117.4"/117.6"	—	—
C. Overhang - rear			
6' box	43.9"/43.7"	43.9"/43.7"	43.7"
7' box	49.9"/49.7"	—	—
D. Overhang - front	33.3"	33.3"	33.3"
E. Overall width	69.4"/70.3"	69.4"/70.3"	70.3"
F. Height	64.9"/67.9"	64.8"/67.8"	69.0"
G. Ground clearance (rear axle)	10.0"	9.8"/10.1"	9.0"
H. Ground to open tailgate height	28.5"/31.6"	27.9"/31.3"	33.0"
I. Ramp breakover angle	21.6°/20.9°	18.7°/19.4°	21.6°
J. Angle of departure	23.3°/27.6°	22.3°/26.9°	23.2°
K. Angle of approach	22.5°/26.4°	20.0°/27.0°	31.0°
Interior			
1st row			
Head room	39.3"	39.3"	39.3"
Shoulder room	54.6"	53.8"	53.8"
Hip room	52.7"	52.7"	52.7"
Leg room	42.3"	42.4"	42.4"
2nd row			
Head room	—	33.3"	33.3"
Shoulder room	—	15.3"	15.3"
Hip room	—	19.3"	19.3"
Leg room	—	40.3"	40.3"
Cargo Area			
Volume (cu. ft.)	6'7"/Flareside 37.3/43.4/34.7	6'/Flareside 37.3/34.7	6' 37.3
Length at floor	72.2"/84.7"/72.2"	72.2"	72.2"
Width at wheelhouse	40.4"	40.4"	40.4"
Width at top of box	54.2"/54.2"/45.8"	54.2"/45.8"	54.2"
Height	16.7"	16.7"	16.7"

STANDARD FEATURES

Safety/Security

Airbags* - Driver and right-front passenger
Belt-Minder® safety belt reminder
Brake/shift interlock (automatic transmission)
Passenger airbag deactivation switch
Safety belt energy management retractors - Front outboard positions
Safety belt pretensioners - Front outboard positions
SecuriLock® passive anti-theft system
Side-intrusion door beams

Mechanical

100,000-mile tune-up interval**
4-wheel anti-lock braking system (ABS)
Battery saver system - Automatically deactivates interior lights
Body-on-frame construction
Electronic 2-speed shift-on-the-fly 4-wheel-drive system (4x4 models only)
Electronic Brake Force Distribution (EBD)
Power front disc/rear drum brakes
Power rack-and-pinion steering
Quick-release tailgate
Stabilizer bar - Front
Styleside bed
Suspension - Front: independent Short- and Long-Arm;
rear: 2-stage leaf springs

Interior

Assist handle - Driver/passenger side
Coat hook - In rear of cab
Floor console - Includes 2 cupholders
Front dome light
Power point - 12-volt
Rally gauge cluster with tachometer
Shoulder belt height adjusters - Front outboard positions

Exterior

2-door Regular Cab
Cargo tie-down hooks - 4 in cargo box
Dual sideview mirrors
Nostril grille - Horizontal bars on 4x2, honeycomb mesh on 4x4
Raised power dome hood
Solar-tinted glass
Stone guards
Tow hooks - Front (4x4 models only)
Trailer tow - Class II receiver with 4-pin connector
Windshield wipers - Intermittent

*Always wear your safety belt and deactivate the passenger airbag when using a rear-facing child safety seat.

**Under normal driving conditions with regular fluid and filter changes.

MODEL-SPECIFIC FEATURES/OPTIONS

	XL 4x2	Edge 4x2	Edge 4x4	XLT 4x2	XLT 4x4
					Mechanical
					2.3L DOHC 16-valve I4 engine
					3.0L OHV 12-valve V6 engine
					4.0L SOHC 12-valve V6 engine
					5-speed manual transmission
					5-speed automatic transmission
					15" argent steel wheels (4)
					15" 7-spoke silver styled-steel wheels (4)
					15" machined-aluminum wheels (4)
					15" 7-spoke chrome styled-steel wheels (4)
					16" cast aluminum wheels (4)
					16" 5-spoke cast aluminum wheels (4)
					Spare - Compact
					Spare - Limited-service
					P225/70R15 all-season BSW tires (4)
					P225/70R15 all-season OWL tires (4)
					P235/75R15 all-terrain OWL tires (4)
					P245/75R16 all-terrain OWL tires (4)
					Axle ratio - 3.55:1
					Axle ratio - 3.73:1
					Axle ratio - 4.10:1
					Limited-slip rear axle
					Seating
					Front vinyl 60/40 split seat
					Front cloth 60/40 split seat
					Front cloth sport bucket seats
					Front leather-trimmed 60/40 split seat
					Front leather-trimmed sport bucket seats
					Rear vinyl jump seats (SuperCab models only - standard 4-door)
					Interior
					Air conditioning†
					AM/FM stereo with clock and 2 speakers
					AM/FM stereo with single-CD player, clock and 4 speakers
					AM/FM stereo with Dual-Media MP3/CD/cassette player, clock and 4 speakers
					AM/FM stereo with 6-disc in-dash MP3/CD player, clock and 4 speakers
					Door trim panels with map pockets
					Floor covering - Black vinyl (textured on Edge)
					Floor covering - Carpeted
					Floor mats - Color-coordinated (front only)
					Leather-wrapped steering wheel
					Pioneer® Sound Package - 290-watt Pioneer sound system with 7 speakers
					Power Equipment Group - Includes power windows/door locks/sideview mirrors and remote keyless entry system
					Tilt steering wheel with speed control

● Standard ● Select Availability ○ Optional — Not Available

†Required with automatic transmission, optional with manual transmission on XL 4x2. Discounted equipment on all other models.

Comparisons based on 2003 competitive models, publicly available information and Ford certification data at time of printing. Some features discussed may be optional. Vehicles shown may contain optional equipment. Features shown may be offered only in combination with other options or subject to additional ordering requirements or limitations. Following publication of the catalog, certain changes in standard equipment, options and the like, or product delays, may have occurred which would not be included in these pages. Your Ford Dealer is the best source for up-to-date information. Ford Division reserves the right to change product specifications at any time without incurring obligations.

XL 4x2**Edge 4x2****Edge 4x4****XLT 4x2****XLT 4x4****Exterior**

●	○	—	●	●	2-door SuperCab
—	○	○	○	○	4-door SuperCab
●	—	—	—	—	Bumpers — Black
—	●	●	—	—	Bumpers — Body color
—	—	—	●	●	Bumpers — Chrome (included in XLT 4x2 Appearance Package)
○	○	○	○	○	Bedliner — Under rail
—	—	—	●	●	Bright Appearance Package — Includes chrome bed rails, step bars and exhaust tip (not available with Flareside or Regular Cab)
—	○	●	●	●	Bright Trim Group — Includes chrome step bars and exhaust tip (not available with Flareside or Regular Cab)
●	●	●	●	●	Cargo box — 6'
●	—	—	●	—	Cargo box — 7'
—	○	○	○	○	Cargo cage bed extender (not available with Flareside box or bedliner)
—	○	○	○	○	Flareside box
—	●	●	—	●	Fog lamps
●	—	—	●	—	Grille — Molded black bars insert with black surround
—	●	●	—	●	Grille — Black honeycomb mesh insert with chrome surround
—	●	●	—	—	Grille — Black honeycomb mesh insert with body-color surround
—	—	—	○	—	Grille — Molded black bars insert with chrome surround
—	○	○	○	○	Privacy glass — Rear quarter windows and back window
—	●	○	●	●	Side step bars
●	—	○	○	○	Sliding rear window
—	—	●	—	●	Tow hooks — Front
●	○	○	○	○	Trailer tow — Class III receiver
—	—	—	●	—	XLT Appearance Package (91A) — Includes P225/70R15 all-season OWL tires, 15" 7-spoke chrome styled-steel wheels, chrome bumpers and chrome grille surround with black bars insert
—	—	—	●	—	XLT Appearance Package (Option Up) — Includes P225/70R15 all-season OWL tires, 15" machined-aluminum wheels, chrome bumpers and chrome grille surround with black bars insert

Tremor 4x2**Tremor 4x4****FX4 Off-Road 4x4****FX4 Level II 4x4****Mechanical**

●	—	—	—	—	3.0L OHV 12-valve V6 engine
—	●	●	●	●	4.0L SOHC 12-valve V6 engine
—	—	●	●	●	5-speed manual transmission
●	●	○	○	○	5-speed automatic transmission
—	—	—	●	●	15" 8-hole Alcoa® forged-aluminum wheels (4)
●	●	—	—	—	16" 5-spoke machined-aluminum wheels (4)
—	●	●	—	—	16" 5-spoke cast aluminum wheels (4)
●	—	—	—	—	P235/70R16 all-season OWL tires (4)
—	●	●	—	—	P245/75R16 all-terrain OWL tires (4)
—	—	—	●	●	31" 7.0 5" BFGoodrich® KO all-terrain tires (4)
●	●	●	●	●	Spare — Limited-service
●	●	●	●	●	Axle ratio — 4.10:1
—	—	—	●	●	Bilstein® shock absorbers
○	○	●	—	—	Limited-slip rear axle
—	—	—	●	●	Limited-slip rear axle — Torsen®
—	—	—	●	●	Skid plates

Tremor 4x2**Tremor 4x4****FX4 Off-Road 4x4****FX4 Level II 4x4****Seating**

●	●	●	—	—	Front cloth 60/40 split seat
○	○	○	●	●	Front cloth sport bucket seats
—	—	○	—	—	Front leather-trimmed 60/40 split seat
—	—	○	○	○	Front leather-trimmed sport bucket seats
—	—	●	●	●	Rear vinyl jump seats (SuperCab models only)

Interior

●	●	●	●	●	Air conditioning*
—	—	●	—	—	AM/FM stereo with CD player, clock and 4 speakers
—	—	○	●	●	AM/FM stereo with Dual-Media MP3/CD/cassette player, clock and 4 speakers
—	—	○	—	—	AM/FM stereo with 6-disc in-dash CD changer, clock and 4 speakers
—	—	○	—	—	Pioneer® Sound Package — 290-watt Pioneer sound system with 7 speakers
●	●	—	—	—	Tremor AM/FM Audiophile 510-watt sound system powered by Pioneer — Includes 6-disc in-dash MP3/CD player with clock, enclosed high-output amplifier with 10" subwoofer, four 6" x 8" coaxial speakers and multi-channel amplifier
●	●	●	●	●	Door trim panels with map pockets
●	●	—	—	—	Floor covering — Black textured vinyl
—	—	●	●	●	Floor covering — Carpeted
—	—	●	—	—	Floor mats — Carpeted, color-keyed (front only)
—	—	—	●	●	Floor mats — Vinyl all-weather spill-containing
—	—	●	●	●	Leather-wrapped steering wheel
●	●	●	●	●	Power Equipment Group — Includes power windows/door locks/sideview mirrors and remote keyless entry system
●	●	●	●	●	Tilt steering wheel with speed control

Exterior

●	—	—	—	—	2-door SuperCab
○	●	●	●	●	4-door SuperCab
●	●	—	—	—	Bumpers — Body color
—	—	●	●	●	Bumpers — Chrome
○	○	○	○	○	Bedliner — Under rail
●	●	●	●	●	Cargo box — 6'
○	○	○	—	—	Cargo cage bed extender (not available with Flareside box or bedliner)
○	○	○	—	—	Flareside box
●	●	●	●	●	Fog lamps
○	○	●	●	●	Privacy glass — Rear quarter windows and back window
○	○	●	—	—	Side step bars
○	○	●	●	●	Sliding rear window
—	●	●	—	—	Tow hooks — Front, black
—	—	—	●	●	Tow hooks — Front, stainless steel
○	○	○	○	○	Trailer tow — Class III receiver

*Required with automatic transmission, optional with manual transmission on XL 4x2. Discounted equipment on all other models.

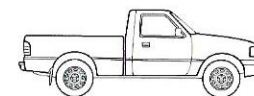
Alcoa is a registered trademark of Alcoa, Inc.

Bilstein is a registered trademark of Krupp Bilstein of America.

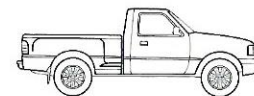
BFGoodrich is a registered trademark of Michelin.

Pioneer is a registered trademark of Pioneer North America, Inc.

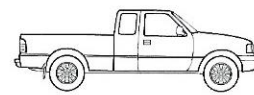
Torsen is a registered trademark of Zexel Torsen, Inc.



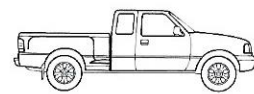
**REGULAR CAB
6' STYLESIDE**



**REGULAR CAB
FLARESIDE**



SUPERCAB 6' STYLESIDE



SUPERCAB FLARESIDE

WHEELS



15" Argent Steel Wheel



15" 7-Spoke Silver
Styled-Steel Wheel



15" 7-Spoke Chrome
Styled-Steel Wheel



15" Machined-Aluminum Wheel



16" Cast Aluminum Wheel



16" 5-Spoke
Cast Aluminum Wheel



15" 8-Hole
Forged-Aluminum Wheel



16" 5-Spoke
Machined-Aluminum Wheel

ENGINES

HORSEPOWER AND TORQUE

2.3L DOHC 16-Valve I4

Horsepower: 143 hp @ 5250 rpm

Torque: 154 lb.-ft. @ 3750 rpm

3.0L OHV 12-Valve V6

Horsepower: 148 hp @ 5000 rpm

Torque: 185 lb.-ft. @ 3750 rpm

4.0L SOHC 12-Valve V6

Horsepower: 207 hp @ 5250 rpm

Torque: 238 lb.-ft. @ 3000 rpm

Maximum Loaded Trailer Weight* (lbs.) – Automatic Transmission

Engine	Axle Ratio	GCWR (lbs.)	Regular Cab		SuperCab	
			4x2	4x4	4x2	4x4
2.3L DOHC I4	4.10	5500	2240	—	—	—
3.0L OHV V6	3.73	6000	2620	—	2440	—
	3.73/4.10 ¹	6000	2480	—	2360 ²	—
	4.10	6000	—	2300	—	—
4.0L SOHC V6	3.55	9500	—	—	5860	—
	3.55 ¹	9500	—	—	5740	—
	3.73/4.10	9500	—	—	—	5560 ^{2,3}

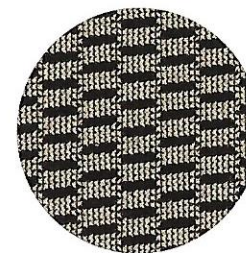
Maximum Loaded Trailer Weight* (lbs.) – Manual Transmission

Engine	Axle Ratio	GCWR (lbs.)	Regular Cab		SuperCab	
			4x2	4x4	4x2	4x4
2.3L DOHC I4	3.73/4.10	4800	1580	—	—	—
3.0L OHV V6	3.73	6000	2660	—	2480	—
	3.73/4.10 ¹	6000	2520	—	2400	—
	3.73/4.10	6000	—	2340	—	—
4.0L SOHC V6	3.55	7000	—	—	3400/ 3320 ¹	—
	3.73/4.10	7000	—	—	—	3100 ¹

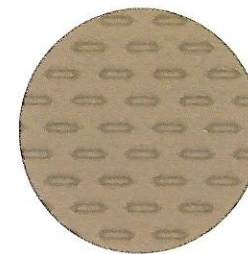
*NOTE: Ranger does not have an electric brake wiring provision. Certain states require electric trailer brakes over a specified trailer weight. In those states, the Ranger maximum trailer weight is limited to the state regulation. Check your state's trailer weight regulations.

¹Ranger Edge only. ²Also available with Tremor. ³5200 lbs. with FX4 Level II. ⁴2400 lbs. with FX4 Level II.

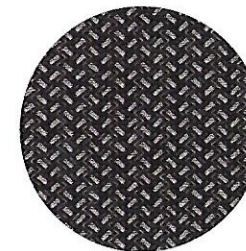
INTERIOR/EXTERIOR COLORS



Medium Pebble Cloth



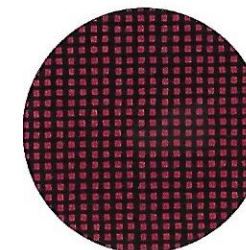
Medium Pebble Vinyl



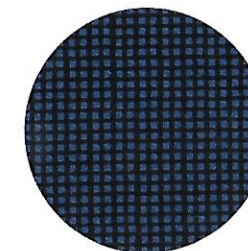
Medium Dark Flint Cloth



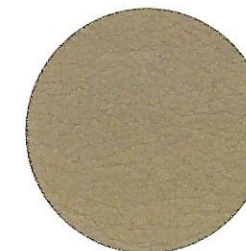
Medium Dark Flint Vinyl



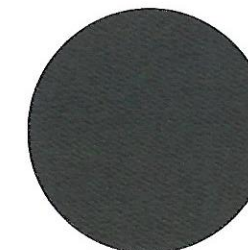
Ebony/Red Cloth



Ebony/Blue Cloth



Medium Pebble Leather



Medium Dark Flint Leather



Solid Ebony Leather



IF YOU HAVEN'T LOOKED AT FORD LATELY...
LOOK AGAIN.



As a corporate partner of the **American Quarter Horse Association**, Ford Motor Company is proud to be associated with this prestigious organization. We are honored to advance the interest in and the support of events that showcase the intelligence, strength and versatility of America's Horse™ and its rider.



Ford Division is a Founding Partner of the **Country Music Hall of Fame® and Museum**, located in Nashville, TN. Ford is proud to be associated with this prestigious facility and is dedicated to honoring the past by promoting the future of country music.



Ford is proud to be one of the oldest and strongest supporters of the **National Future Farmers of America Organization (FFA)**. Furthering the education of America's future leaders remains a priority for Ford Motor Company, Ford Division and Ford Dealers.



Ford is the Official Truck and Title Sponsor of the **Professional Bull Riders (PBR) Elite Built Ford Tough Series**. This 29-city tour provides some of the toughest entertainment around.



Legendary Ford Trucks are the **Official Trucks of NASCAR®**. Racing, endurance and the ability to really haul run in our respective veins – as does our love for running around in the winner's circle.

NASCAR® is a registered trademark of the National Association for Stock Car Auto Racing, Inc.



Ford is the Official Truck and the Presenting Sponsor of the **USHRA Monster Jam Series**. Ford is proud to also sponsor the Built Ford Tough **BLUE THUNDER**, one of the elite Monster Truck teams competing in the Series.



Ford Trucks are the exclusive and official automotive sponsor of the **Vans Triple Crown Series**. This series consists of a trio of competitions in each of the following categories: skateboarding, wakeboarding, snowboarding, surfing, freestyle motocross and BMX.



Ford Trucks are the Official Trucks of the **World Snowmobile Association 2003-2004** Snocross Worldwide Championship Series. Ford proudly supports the WSA and the sport of snowmobile racing.