



05 FREESTAR



> Versatile By Design.

Whether it's errands, basketball games or hauling materials for a remodeling project, you just never know what each day is going to bring. One thing is certain though, you like it that way. So it's nice to have a vehicle like Ford Freestar that's so versatile it can keep up with you. Freestar's 7-passenger interior provides an abundance of room for occupants and all their gear. Numerous storage compartments, cargo bins and cupholders are located where you need them most. And Freestar is engineered for safety, so you know you're well looked after.



Freestar SES Matador Red Metallic
available 17" wheels and roof rail crossbars



2005 Ford Freestar

Versatility

Seating Options
Power Liftgate
DVD Player

03

Driver Comfort

Audio
Climate Control
Adjustable Pedals
Power Outlets
Conversation Mirror

05

Interior Storage

Cargo Well
Storage Options
In-Dash Compartment

07

Safety & Security

Mirrors with Turn Signals
Reverse Sensing System
ABS
AdvanceTrac®

09

Power & Performance

4.2L Engine
3.9L Engine

11

Specifications

Genuine Ford Accessories
Standard and Available Equipment
Colors and Fabrics

13



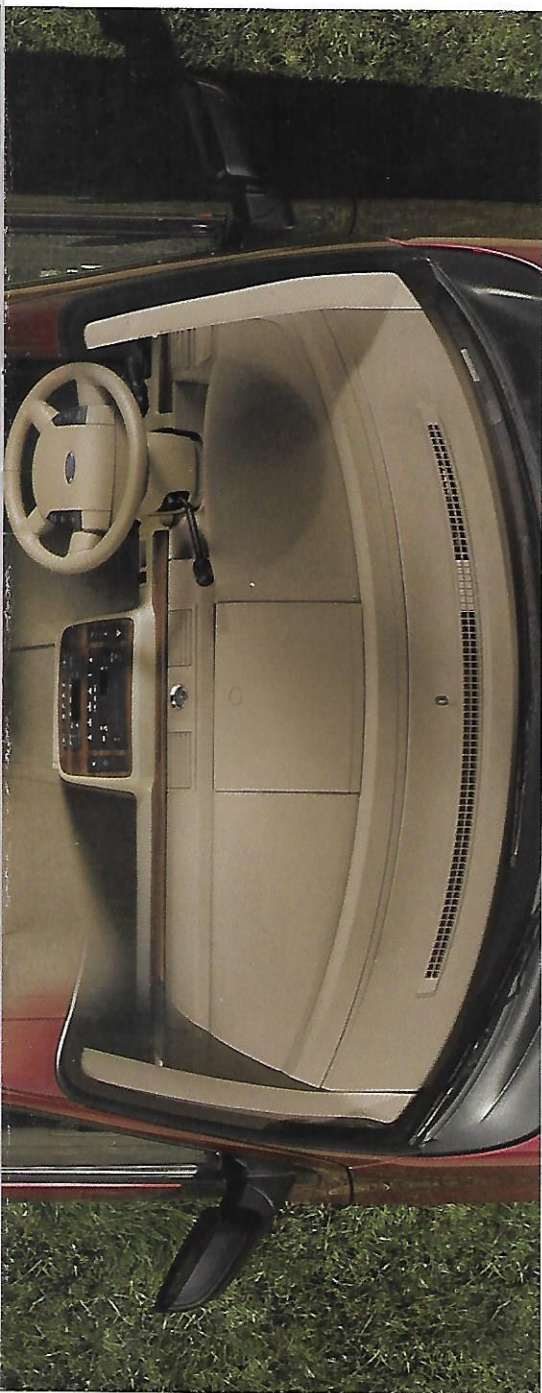
Seating Options

Available 2nd-Row Captain's Chairs — With these, Freestar can be reconfigured to accommodate just about any situation. A gas-assist lift mechanism allows the seats to fold and tumble easily with one hand — making for easy access to Freestar's 3rd row. Simply lift another lever to completely remove the seats.



> Room For Some Smart Thinking.

Here's an environment that's full of innovation. Take a look at your seating options. Choose a 2nd-row bench seat or available captain's chairs. The 3rd-row Tailgate Bench Seat™ can be used for special seating at parades and family picnics. An available Rear-Seat DVD Entertainment System will keep passengers entertained for hours. And Freestar's long list of standard equipment ensures there's plenty of smart thinking throughout the vehicle.



A Bench You'll Flip Over

Standard 3rd-Row Tailgate Bench Seat* — Just pull the lower release strap, pull the seat down and it becomes a rear-facing seat, perfect for tailgating, camping and sporting events. Or stow it out of sight to create a flat loadfloor and more than 130 cu. ft. of cargo volume (with 3rd row folded flat and 2nd-row seats removed).

*Rear-facing 3rd-row seat is not intended for passenger seating while vehicle is in motion.



Power Up

Power Liftgate — Simply press a button on the key fob or on the overhead console to open or close the liftgate mechanically. Pulling on the liftgate handle also activates the opening mechanism. Available on SEL and Limited.



Catch A Flick

Rear-Seat DVD Entertainment System — The 7" color LCD screen flips down for the show and folds neatly into the headliner when not in use. It comes with a remote control and 2 wireless headphones. It's available on all models except S and requires Tri-zone Climate Control.

> The Emphasis Is On Comfort.

If you're behind the wheel or seated in back, you'll find Freestar has your comfort well looked after. For starters, the instrument panel is designed to put you in control. Easy-to-read gauges are right where you need them. Audio and climate control buttons are conveniently placed in the center of the instrument panel. Amenities include air conditioning, numerous cupholders, power windows and door locks, and roomy 7-passenger seating. As you can clearly see, Freestar was engineered to make every journey a most enjoyable one.

Great Sounds

AM/FM Stereo/Single-CD Player — The standard audio system includes 4 speakers (all models except S). Automatic speed-sensitive volume control and rear-seat controls are included on Limited. A 6-disc in-dash CD changer (shown) is also available.



Perfect Temperature

Tri-Zone Climate Controls — Driver and front passenger can adjust their own temperature setting, with controls located in the center of the instrument panel. A set of controls for the rear zone is located in the ceiling above the 2nd row. Standard on SES, SEL and Limited.



Adjust Away

Power-Adjustable Pedals — These available pedals allow you to position your seat farther away from the steering wheel while still maintaining a comfortable driving position. Available with Value Group on SES and SEL, and with Memory Package on Limited.



Stay Connected

Power Points — You never know when you'll need a power outlet. That's why Freestar includes 4 12v outlets: 2 in the 1st row, 1 in the 2nd row, and 1 in the rear cargo area. Great for PDAs, laptops and cell phones.



Freestar Limited Instrument Panel
Pebble Interior
available 6-disc in-dash CD changer

Talk Away

Conversation Mirror — Included in the standard overhead console on SES, SEL and Limited, the mirror lets you view your rear-seat passengers without turning around. This handy console also includes controls for the power sliding doors (standard on Limited, optional on SEL), compass and outside temperature display (SEL and Limited), as well as storage compartments.





The Big Haul

3rd-Row Cargo Well – Here's a space that can take anything from a sport bag full of basketballs to bottles of refreshments for the entire team. You've got 31.5 cu. ft. behind the 3rd row (includes the 3.9-cu.-ft. cargo well).



> Space Is The Place.

Freestar has an abundance of room for passengers, a ton of gear, and all the little things you need to make time spent here a pleasure. And it's not just sheer volume — it's space organized in a practical manner that allows you to place items where they make the most sense. You're treated to storage at your side in the doors, and you'll find a handy in-dash compartment for your CDs, cassettes and other small items. Cupholders abound as well. This is an interior that redefines the word "storage."



Store In The Door

Dual-Bin Storage — This best-in-class storage system in each front door has plenty of room for toys, books and maps.



Tunes To Go

CD Storage — There's no reason to have your CDs sliding around the floor. Stack them into this storage bin that's conveniently located below the audio system and they'll ride up front with you.



Keep It Up Top

In-Dash Storage Compartment — Keep all your small items conveniently at hand. This in-dash compartment opens with the touch of a button and is perfect for small items such as pens, paper and electronic calendars.

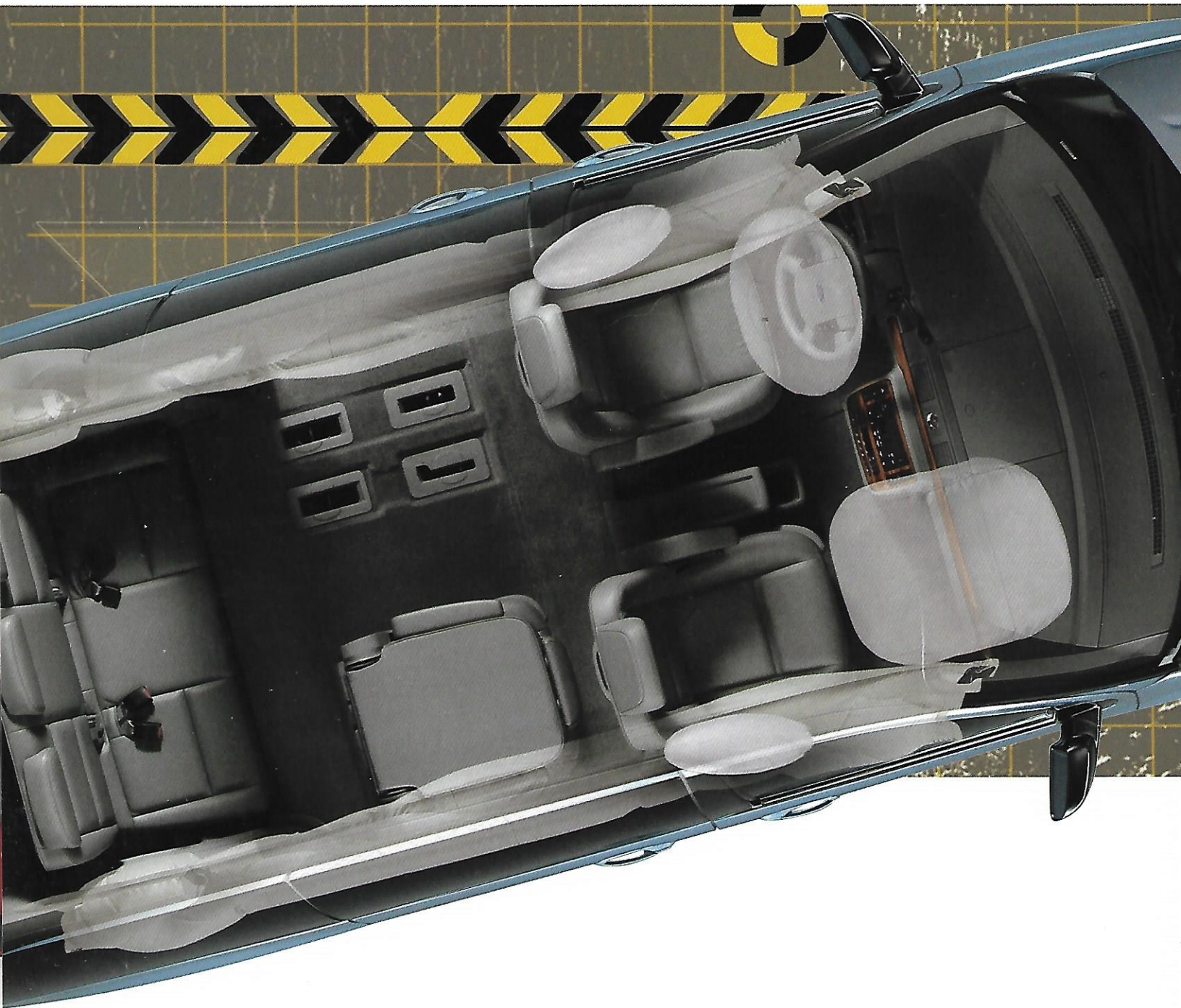


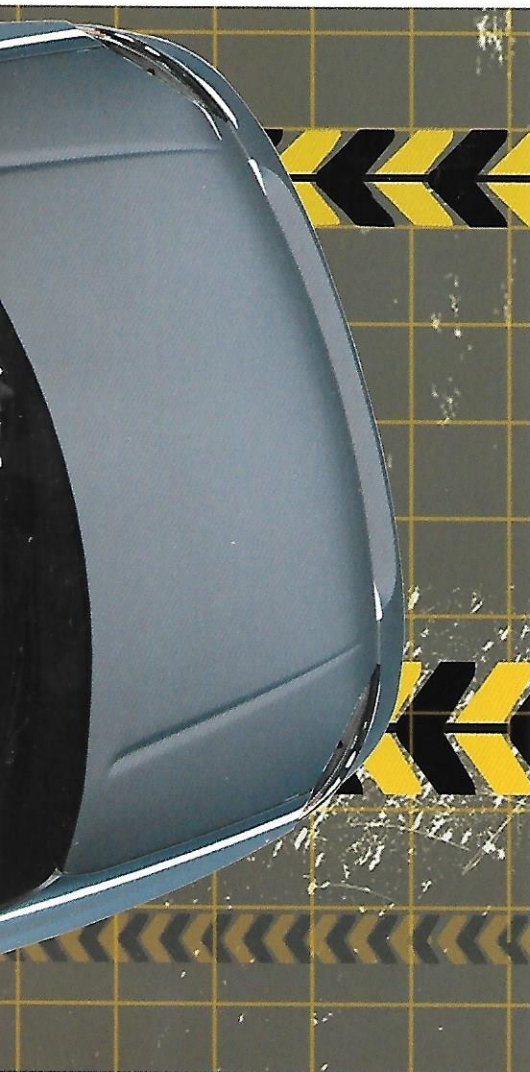
A Place For Everything

Sliding-Door Storage — Kids will love having a special space to store their "valuables." What's not to love?

> Safety & Security Features, End To End.

Ford minivans have built a solid reputation for safety. Freestar is 1 of only 2 minivans to receive the Insurance Institute for Highway Safety (IIHS) Best Pick. It also earned NHTSA's 5-Star frontal crash safety rating — their highest rating. The available Safety Canopy™ System's side-curtain airbags cover all 3 rows of seating. A segment-exclusive rollover sensor directs deployment in the event of a rollover or side-impact collision. Side-curtain airbags remain inflated longer than the front airbags, helping to further protect occupants.





Send A Signal

Mirrors With Integrated Turn Signals — The turn signal is projected into the sideview mirrors, alerting traffic behind you. They also flash when a sliding door is open to warn traffic that someone may be exiting the minivan. The signal flashes until the door is closed, for up to 30 minutes. Standard on Limited and available on SEL.



An Extra Set Of Eyes

Reverse Sensing System — This system uses electronic sensors to detect and alert you to objects behind the vehicle when backing up. The closer you get, the quicker the tone beeps. Included in Active Safety Package II.



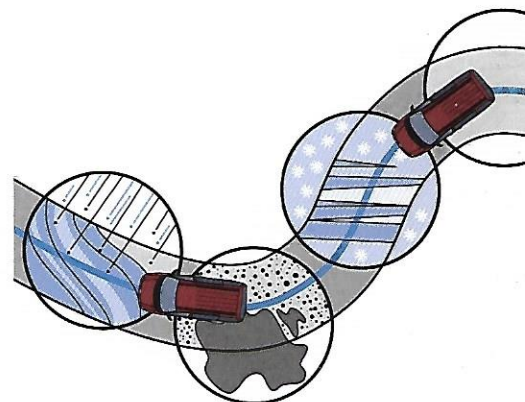
Stop It

Anti-Lock Brake System — Standard 4-wheel disc anti-lock brakes contribute to improved control and driver confidence by reducing wheel lockup during hard braking on almost any surface.

Stay On Track

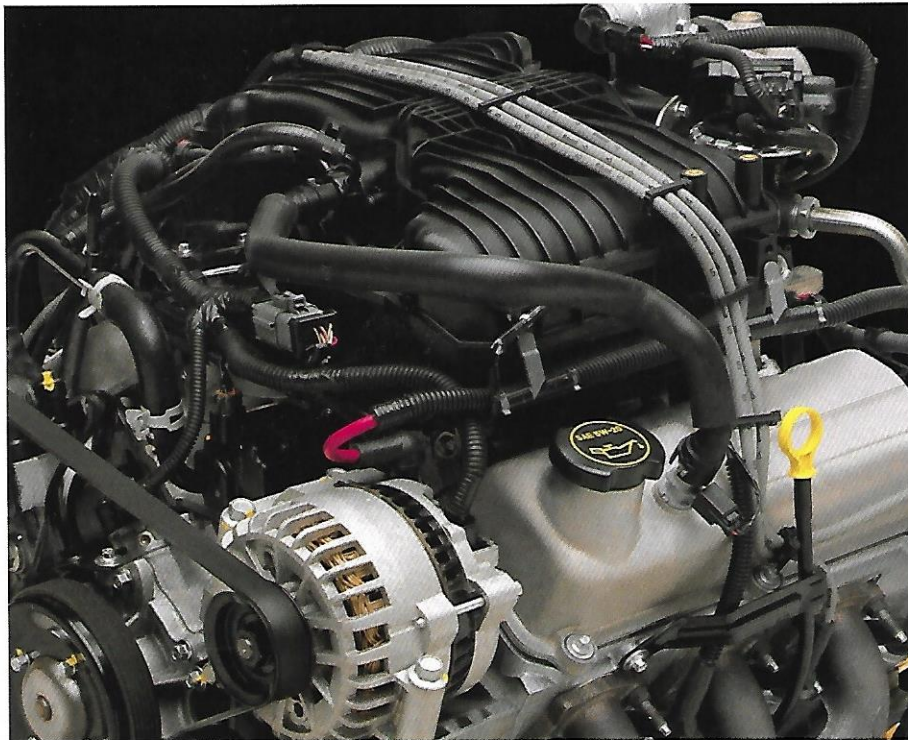
AdvanceTrac® — This Electronic Stability Enhancement System helps you maintain control of your Freestar by using advanced sensors to constantly monitor driving input and the vehicle's responses. In certain understeer or oversteer situations, AdvanceTrac makes braking and throttle adjustments* to help correct vehicle direction. Included in Active Safety Packages I and II.

*Remember that even advanced technology cannot overcome the laws of physics. It's always possible to lose control of a vehicle due to inappropriate driver input for the conditions.



> Go With Confidence.

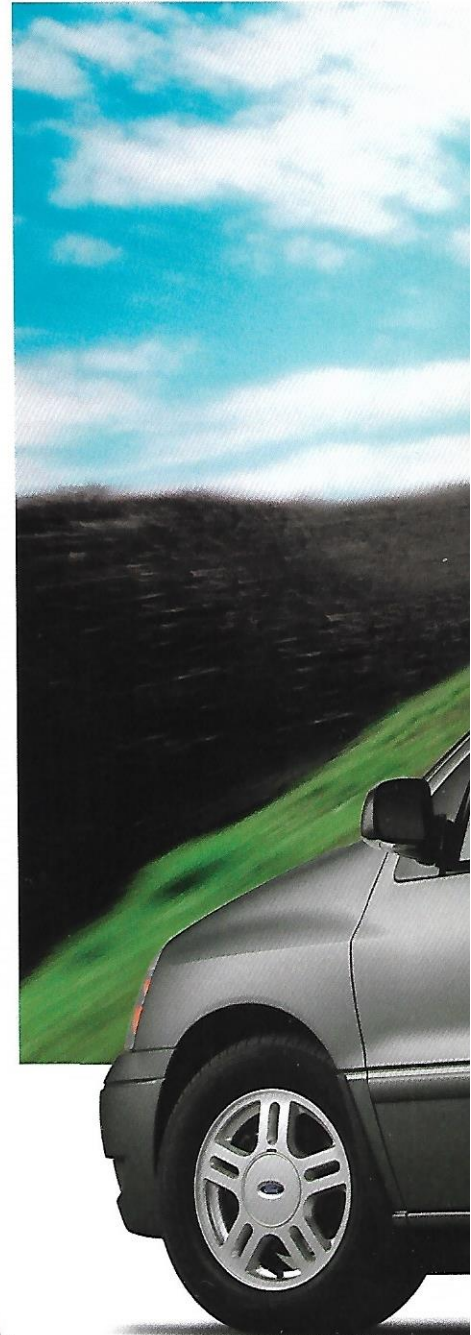
One thing that's sure to impress is Freestar's ride. It's responsive and nimble, and it handles predictably in all situations. The excellent steering response is due in part to the MacPherson strut front suspension system. In back, a laterally and torsionally stiff twist-beam axle decreases understeer. Freestar's shocks have been tuned for ride comfort and body control. And power rack-and-pinion steering has superb on-center feel. With a choice of a 3.9L or 4.2L engine, you've got the right power in your hands.



More Power To You

4.2L V6 Engine — The standard powerplant on SEL and Limited is the largest-displacement engine available in a minivan. What's more, its best-in-class torque (263 lb.-ft. @ 3650 rpm) means you have the power and acceleration to merge and pass with ease. Both engines are connected to the frame using liquid-filled hydromounts that help isolate the passenger compartment from engine vibration and road impacts. Freestar also features a 26-gallon fuel tank, allowing it to travel more than 500 highway miles on a single fill-up.*

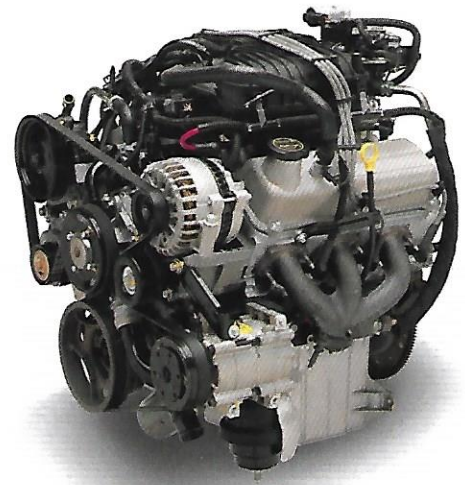
*2004 EPA estimated mpg: 16 city/23 hwy.



Get Going

3.9L V6 Engine – This engine comes standard on S, SE and SES models and produces a hearty 240 lb.-ft. of torque, which makes it fully capable of meeting your towing requirements up to 3500 lbs. Both Freestar engines feature a fail-safe engine cooling system that allows the vehicle to continue for a short period following a loss of coolant.**

**Distance traveled with limited engine power depends on vehicle load, terrain and ambient temperature.



Freestar SEL _ Dark Shadow Grey Metallic _ available Active Safety Package II and roof-rail crossbars

> Specifications

GENUINE FORD ACCESSORIES

See your dealer for these and other great dealer-installed accessories or visit us at fordaccessoriesstore.com.



Hands On The Wheel

Mobile-Ease Hands-Free Communication System – Place and receive hands-free calls through the audio system with this Bluetooth® technology and your Bluetooth-equipped cell phone.



Start Your Engine

Remote Start – Start your Freestar from up to 500 feet away to ensure your vehicle is the right temperature before you get inside.



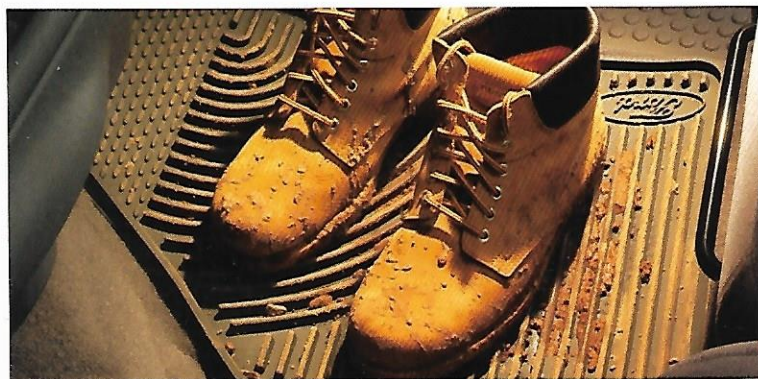
Lookin' Good

Rear Air Deflector – It mounts to the vehicle's liftgate. The deflector is available in select exterior colors that match or complement Freestar's exterior.



Keep It Handy

2nd-Row Center Console – This provides extra storage and includes pockets in the lid to hold 2 notebooks and pencils, and a large bin for storing maps, tapes, CDs and other items you need close at hand.



Muss, No Fuss

All-Weather Vinyl Floor Mats – Deep grooves and raised ridges in these heavy-duty mats trap snow, slush and mud while protecting Freestar's carpeting. They're available in colors that complement your vehicle's interior.



Safety First

Highway Safety Kit – A convenient carrying kit that includes reflective triangle, flashlight, bungee cords, thermal blanket, cotton gloves, hose tape, multi-function knife, Phillips- and slotted-head screwdrivers and a 12-hour lightstick.

MODEL HIGHLIGHTS Each series includes the standard equipment of the previous series, except where additions/exceptions are noted.



S

Body-color bumpers • Black door handles • Body-color grille • Black moldings • Black power sideview mirrors • P225/60R16 all-season BSW tires • 16" steel wheels with full wheel covers • Manual front air conditioning • AM/FM stereo with digital clock and 4 speakers • Front dome and rear cargo lights • 1st-row high-back cloth captain's chairs • 2nd-row 2-passenger bench • 3rd-row Tailgate Bench Seat™ • Driver and front-passenger sun visors with covered vanity mirrors • Remote keyless entry system



SE

Privacy glass in 2nd and 3rd rows • Roof rails • AM/FM stereo with single-CD player and digital clock • Enhanced Seating Group • Light Visibility Group • Speed control • 2nd-row 2-passenger bench with child-seat presenter



SES

Black lower bumper fascia • Body-color door handles • Black grille • Black lower bodyside moldings • Driving lamps • High-gloss black power sideview mirrors • 16" painted-aluminum 5-spoke sport wheels • Tri-zone manual high-capacity auxiliary climate control system • 6-way power driver's seat with manual lumbar support • Full overhead console • Front-door courtesy lights and 1st-row map lights



SEL

Body-color bumpers with bright trim strips • Chrome grille • Body-color moldings • Cornering lamps • P235/60R16 all-season BSW tires • 16" painted-aluminum 5-spoke wheels • 1st-row low-back cloth captain's chairs with 6-way power driver's seat and manual lumbar support • 2nd-row fold-and-tumble captain's chairs • Leather-wrapped steering wheel with duplicate audio controls • Driver and front-passenger sun visors with illuminated vanity mirrors • Driver's-door-mounted keyless entry keypad



Limited

Contrasting-color bumpers and cladding with bright trim strips • High-gloss-black power heated sideview mirrors with integrated turn signals and puddle lamps • 16" bright machined-aluminum 5-spoke wheels • Electronic Automatic Temperature Control • AM/FM stereo/single-CD player with automatic speed-sensitive volume control and rear-seat controls • Analog clock • Message center • 1st-row low-back leather captain's chairs with 6-way power driver's seat and manual lumbar support • 2nd-row fold-and-tumble captain's chairs with fore/aft adjustment • Front storage pocket on driver's seat

STANDARD FEATURES

Mechanical

3.9L OHV V6 engine with split-port induction (S, SE, SES)
4.2L OHV V6 engine with split-port induction (SEL, Limited)
4-speed electronic automatic transmission with overdrive lockout
4-wheel power disc brakes with ABS and Electronic Brake Force Distribution (EBD)
100,000-mile tune-up interval*
Battery saver
Fail-safe engine cooling system
Front-wheel drive
Fuel tank – 26-gallon capacity
Power rack-and-pinion steering
Spare – Compact
Stabilizer bar – Front
Stainless steel exhaust system
Suspension – Front: independent MacPherson strut; rear: torsion beam

Safety/Security

Personal Safety System™ for driver and front passenger – With dual-stage airbags,** safety belt pretensioners, energy-management retractors, safety belt usage sensors, driver's-seat position sensor, front-passenger-seat occupant classification sensor, crash severity sensor and restraint control module
Autolock – Doors lock automatically when driving
Belt-Minder® safety belt reminder
Brake/shift interlock
Bumpers – 5-mph energy-absorbing
Fuel pump inertia shutoff switch
LATCH – Lower anchors and tether anchors for child-safety seats
Remote keyless entry system with illuminated entry
Safety cell unitized body construction
SecuriLock® passive anti-theft system
Side-impact door beams
Tire Pressure Monitoring System
Warning lights – Low fuel level, fuel cap off, low oil pressure, low washer fluid, brake system, ABS, charging system, high-beam indicator and tire pressure loss warning

Seating

7-passenger seating with fold-in-floor 3rd-row Tailgate Bench Seat™

Interior

Accessory delay for power features
Air conditioning – 1st-row manual
Carpets floor mats – Front and rear
Cupholders – Up to 9 (depending on series)
Dome lights – Front and rear
Door-trim panels with storage compartments
Power door lock switch in cargo area
Power door locks with child-safety locks on rear sliding doors
Power front windows with one-touch-down driver's-side feature
Power points in 1st and 2nd rows and rear cargo area
Shoulder belt height adjusters – 1st- and 2nd-row outboard seats
Tilt steering column

Exterior

Antenna – Concealed in right-side rear glass
Bodyside moldings
Dual, manual sliding rear side doors
Power 3rd-row flip-open windows
Power sideview mirrors
Rear-window defroster
Solar-tinted glass
Windshield wipers – Front and rear intermittent

*Under normal driving conditions with routine fluid and filter changes.

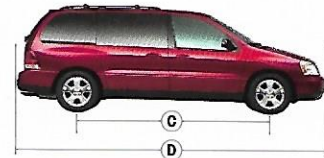
**Always wear your safety belt and secure children in the rear seat.

MODEL-SPECIFIC FEATURES & OPTIONS

S	SE	SES	SEL	Limited	
●	●	—	—	—	Mechanical
—	—	●	—	—	16" steel wheels with full wheel covers
—	○	—	●	—	16" painted-aluminum 5-spoke sport wheels
—	—	—	—	●	16" painted-aluminum 5-spoke wheels
—	—	—	—	●	16" bright machined-aluminum 5-spoke wheels
—	—	○	○	○	17" aluminum-alloy wheels (includes P235/55R17 all-season BSW tires)
●	●	—	—	—	P225/60R16 all-season BSW tires
—	○	●	●	●	P235/60R16 all-season BSW tires
—	○	○	○	○	Self-sealing tires
●	●	●	●	—	Maintenance-free battery – 58-amp.-hr.
—	○	○	○	●	Maintenance-free battery – 78-amp.-hr.
—	—	—	—	—	Safety/Security
—	○	○	—	—	Active Safety Package I – Includes Traction Control and AdvanceTrac®
—	—	—	○	○	Active Safety Package II – Includes Traction Control, AdvanceTrac and Reverse Sensing System
○	○	○	○	○	Safety Canopy™ System – 3-row side-curtain airbags with rollover sensor and 1st-row seat-mounted, side-impact airbags
●	●	●	—	—	Seating
—	—	—	●	●	1st-row high-back captain's chairs with integrated head restraints and recline
—	—	—	—	●	1st-row low-back captain's chairs with adjustable head restraints and recline
●	●	●	—	—	2nd-row 2-passenger bench seat with E-Z Entry feature
—	○	○	●	—	2nd-row fold-and-tumble captain's chairs
—	—	—	○	●	2nd-row fold-and-tumble captain's chairs with fore/aft adjustment
●	●	●	●	○	Cloth seating
—	—	—	—	○	Leather-trimmed seats (3rd-row vinyl)
—	—	—	—	○	Heated front seats (requires leather-trimmed seats and 6-way power passenger's seat)
—	○	●	●	●	Power driver's seat – 6-way with manual lumbar support
—	—	—	○	○	Power passenger's seat – 6-way (requires leather-trimmed seats)
○	○	●	●	—	Interior
—	—	—	—	●	Air conditioning – Tri-zone manual high-capacity auxiliary climate control system with adjustable temperature and fan controls for driver/front passenger/rear-seat passengers
—	—	—	—	●	Air conditioning – Tri-zone Electronic Automatic Temperature Control with manual 2nd-row controls
●	—	—	—	—	AM/FM stereo with digital clock
—	●	●	●	●	AM/FM stereo with single-CD player and digital clock (clock not on Limited)
—	○	○	○	—	AM/FM stereo with single-CD/cassette player and digital clock
—	—	—	○	—	AM/FM stereo with 6-disc in-dash CD changer and digital clock
—	—	—	—	○	AM/FM stereo with 6-disc in-dash CD changer
—	—	—	—	○	Premium AM/FM stereo with single-CD/cassette player
—	○	○	○	●	Cargo net – Rear
—	—	—	●	●	Compass and outside temperature display
—	○	○	○	○	Console – 1st-row floor-mounted
—	—	●	●	●	Console – Full overhead with conversation mirror, reading/dome lights and provisions for power sliding door switches
—	—	●	●	●	Front-door courtesy lights and 1st-row map lights
—	—	—	●	●	Leather-wrapped color-keyed steering wheel with duplicate audio controls

● Standard ○ Select Availability ○ Optional — Not Available

DIMENSIONS



Exterior

A. Overall width	76.4"
B. Height	68.5"
Height with roof rack	70.6"
C. Wheelbase	120.8"
D. Overall length	201.0"

Interior

1st row

Head room	38.9"
Shoulder room	61.0"
Hip room	58.4"
Leg room	40.7"

2nd row

Head room	40.1"
Shoulder room	63.5"
Hip room	66.4"
Leg room	38.0"

3rd row

Head room	38.2"
Shoulder room	50.9"
Hip room	48.1 "
Leg room	34.1 "

Cargo Volume (cu. ft.)

Behind 1st row	130.7
Behind 2nd row	70.4
Behind 3rd row [†]	31.5

Maximum Capabilities^{††} (lbs.)

Payload	1200
Trailer tow ^s	3500

†Includes cargo well volume (3.9 cu. ft.).

††Maximum capabilities shown are for properly equipped vehicles with required equipment and a 150-lb. driver. Weight of additional options, equipment, passengers and cargo must be deduced from this weight. For additional information, see your Ford Dealer.

⁹With Class II Trailer Tow Package.

S					
SE					
SES					
SEL					
Limited					
Interior (continued)					
—	●	●	●	●	Light Visibility Group – Includes 2nd-row reading lights, 1st-row foot lights, B-pillar lights and sleeping-baby mode
—	—	—	●	●	Message center – With fuel economy/range and service status
—	—	—	—	●	Reading lights – 3rd-row
—	—	—	●	●	Rear-seat audio and climate controls
—	○	○	○	○	Rear-Seat DVD Entertainment System (requires Tri-zone AC)
○	○	○	○	○	Smoker's Package – Cigarette lighter and ash cup
—	●	●	●	●	Speed control
●	●	●	—	—	Visor vanity mirrors
—	—	—	●	●	Visor vanity mirrors – Illuminated
Exterior					
—	—	●	—	—	Cladding – Black lower bodyside
—	—	—	—	●	Cladding – Two-tone lower bodyside
—	—	—	●	●	Cornering lamps
●	●	—	—	—	Door handles – Black
—	—	●	●	●	Door handles – Body-color
—	—	●	—	—	Driving lamps
●	●	—	—	—	Grille – Body-color
—	—	●	—	—	Grille – Black
—	—	—	●	●	Grille – Chrome
—	—	—	●	●	Keyless entry keypad – Driver's-door-mounted, illuminated
●	●	—	—	—	Mirrors – Power sideview, molded-in-black
—	—	●	●	—	Mirrors – Power sideview, high-gloss-black
—	—	—	●	●	Mirrors – Power sideview, high-gloss-black, heated with integrated turn signals and puddle lamps
●	●	—	—	—	Moldings – Molded-in-black
—	—	●	●	—	Moldings – Body-color
—	—	—	○	○	Power liftgate (requires power sliding doors)
○	●	●	●	●	Privacy glass in 2nd and 3rd rows and liftgate
—	●	●	●	●	Roof rails
—	○	○	○	○	Roof rails with crossbars
●	●	●	●	—	Sliding rear side doors – Manual
—	—	—	○	●	Sliding rear side doors – Power
Packages					
—	○	○	○	○	Class II Trailer Tow Package – Includes High-Speed/Ambient Temp. Pkg., trailer wiring, P235 tires and 78-amp.-hr. battery
—	○	○	—	—	Electronics Group – Includes auto-dimming rearview mirror, automatic headlamps, overhead console with compass and outside temperature display
—	●	●	●	●	Enhanced Seating Group – Includes map pockets and grab handles for 1st row, and 2nd-row seat-mounted cupholders
—	—	—	—	○	Memory Package – Includes power-adjustable pedals with memory and memory settings for sideview mirrors and driver's-seat position (requires Safety Canopy System, Active Safety Package II and leather-trimmed seats)
—	—	○	—	—	Value Group I – Includes perimeter anti-theft system and power-adjustable pedals
—	—	—	○	—	Value Group II – Includes perimeter anti-theft system; power-adjustable pedals; power, heated sideview mirrors with integrated turn signals and puddle lamps; auto-dimming rearview mirror; and message center
—	—	—	—	○	Value Group III – Includes perimeter anti-theft system, auto-dimming rearview mirror and HomeLink® Universal Transceiver

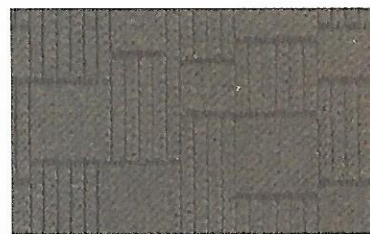
INTERIOR COLORS

Pebble	
Flint	
S	
●	Vibrant White
●	Arizona Beige Metallic*
●	Matador Red Metallic*
●	Medium Steel Blue Metallic
●	Silver Birch Metallic
●	Dark Shadow Grey Metallic*
SE	
●	Vibrant White
●	Arizona Beige Metallic
●	Matador Red Metallic
●	Spruce Green Metallic
●	Medium Steel Blue Metallic
●	Silver Birch Metallic
●	Dark Shadow Grey Metallic*
SES	
●	Vibrant White
●	Arizona Beige Metallic
●	Matador Red Metallic
●	Medium Steel Blue Metallic
●	Silver Birch Metallic
●	Dark Shadow Grey Metallic*
SEL	
●	Vibrant White
●	Arizona Beige Metallic
●	Matador Red Metallic
●	Spruce Green Metallic
●	Medium Steel Blue Metallic
●	Silver Birch Metallic
●	Dark Shadow Grey Metallic*
Limited Two-Tone	
●	Vibrant White/Harvest Gold Metallic
●	Vibrant White/Graphite Metallic
●	Arizona Beige Metallic/Harvest Gold Metallic
●	Matador Red Metallic/Harvest Gold Metallic
●	Spruce Green Metallic/Harvest Gold Metallic
●	Medium Steel Blue Metallic/Graphite Metallic
●	Silver Birch Metallic/Graphite Metallic
●	Dark Shadow Grey Metallic/Graphite Metallic*
●	Black/Harvest Gold Metallic

*New for 2005.



Pebble Cloth
Standard on SE



Flint Cloth
Standard on S and SE



Pebble Cloth
Standard on SES



Flint Cloth
Standard on SES



Pebble Cloth
Standard on SEL



Flint Cloth
Standard on SEL



Pebble Leather
Standard on Limited, Optional on SEL



Flint Leather
Standard on Limited, Optional on SEL

WHEELS



16" Steel Wheels with
Full Wheel Covers
Standard on S and SE



16" Painted-Aluminum
5-Spoke Sport Wheels
Standard on SES



16" Painted-Aluminum
5-Spoke Wheels
Standard on SEL, Optional on SE



16" Bright Machined-Aluminum
5-Spoke Wheels
Standard on Limited



17" Aluminum-Alloy Wheels
Optional on SES, SEL
and Limited

EXTERIOR COLORS



Vibrant White



Arizona Beige Metallic



Matador Red Metallic



Spruce Green Metallic



Medium Steel Blue Metallic



Silver Birch Metallic



Dark Shadow Grey Metallic



Black/Harvest Gold Metallic

Ford uses clearcoat paint for beauty and protection. Colors shown are representative only. Not all colors are available on all models. See your dealer for actual paint/trim options.



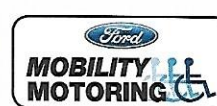
Get the ride you want. Whether you plan to lease or finance, you'll find the choices that are right for you at Ford Credit. Ask your Ford Dealer for details or check us out at fordcredit.com.



For a purchase or lease, the Ford Extended Service Plan (ESP) gives you "Peace-of-Mind" protection designed to cover key vehicle components and protect you from the cost of unexpected repairs. Ask your dealer for an ESP backed by Ford Motor Company and honored at all Ford dealerships.



Choose the insurance program that's designed for your vehicle – Ford Motor Company Insurance Services. Our program helps you receive the rates and service you deserve. Call 1-877-367-3847 or visit us at fordvip.com for a no-obligation quote. Insurance offered by American Road Services Company (in CA, American Road Insurance Agency), a licensed agency and subsidiary of Ford Motor Company.



Having a physical disability doesn't mean life can't be rewarding. In fact, for many thousands of Ford Motor Company customers, Ford Mobility Motoring has meant their lives can also be easier and more fulfilling. To request an information kit, learn about the Ford Mobility Motoring Process, and hear what customers say about the freedom and independence that adapted vehicles provide them, visit www.mobilitymotoringprogram.com.



©2004 Ford Motor Company 05FRSTARCAT
Litho in USA on recycled paper (20% post consumer)

fordvehicles.com

