

FOCUS
MUSTANG
ZX2

2001



Designing, building and servicing cars and trucks that meet our customers' needs is only part of the Ford equation. Making those vehicles and the facilities they are designed and built in as environmentally responsible as possible is a corporate objective that we take very seriously.

As our environmental pledge says; "Our actions will demonstrate that we care about preserving the environment for future generations."



1

SAFETY

4

FORD FOCUS

6

FORD MUSTANG

20

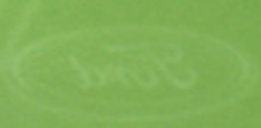
FORD ZX2

34

COOL STUFF

48

2





AIRBAGS & SAFETY BELTS



Like the bumper stickers say, "Stuff happens" (or something close to that). Our researchers know this, and came up with new front seat side air bags that you can order on all Focus models. Driver and front passenger airbags automatically come with every Focus, Mustang and ZX2. Of course you're gonna want to use your safety belts – ours adjust to fit just right. And if you're driving with kids...make sure they're properly secured in the rear seat.

Airbags inflated for illustrative purposes only.

FOCUS SAFETY & SECURITY

	ZX3	LX	SE	SE	ZTS
	3-door			Wagon	
Airbags* - Driver and Front Passenger	S	S	S	S	S
Side Impact Airbags - Driver and Front Passenger	O	O	O	O	O
Anti-Lock Braking System (ABS)	O	O	O	O	S
SecuriLock™ Passive Anti-Theft System	S	S	S	S	S
AdvanceTrac Traction Control	O	-	-	-	O
Child Safety Door Locks - rear doors	-	S	S	S	S
Lower Anchor and Tethers for Children (LATCH)	S	S	S	S	S

ANTI-LOCK BRAKES



Life really can be like those driver's ed movies – watch out! There's a wayward cow stepping right in front of your car. That's when you (and the heifer) thank your lucky stars for those anti-lock brakes. The ABS helps you keep the car in the right direction, while bringing you to a smooth, controlled stop. You say "whew". The cow says "moo".

MUSTANG SAFETY & SECURITY

	MUSTANG	GT
High-Strength Side-Door Intrusion Beams	S	S
Airbags* - Driver and Front Passenger	S	S
3-Point Lap Shoulder Safety Belts	S	S
SecuriLock™ Passive Anti-Theft System	S	S
Remote Keyless Entry system	S	S
Anti-Lock Braking System	**	S
All-Speed Traction Control (requires ABS)	**	S
Fog lamps	-	S

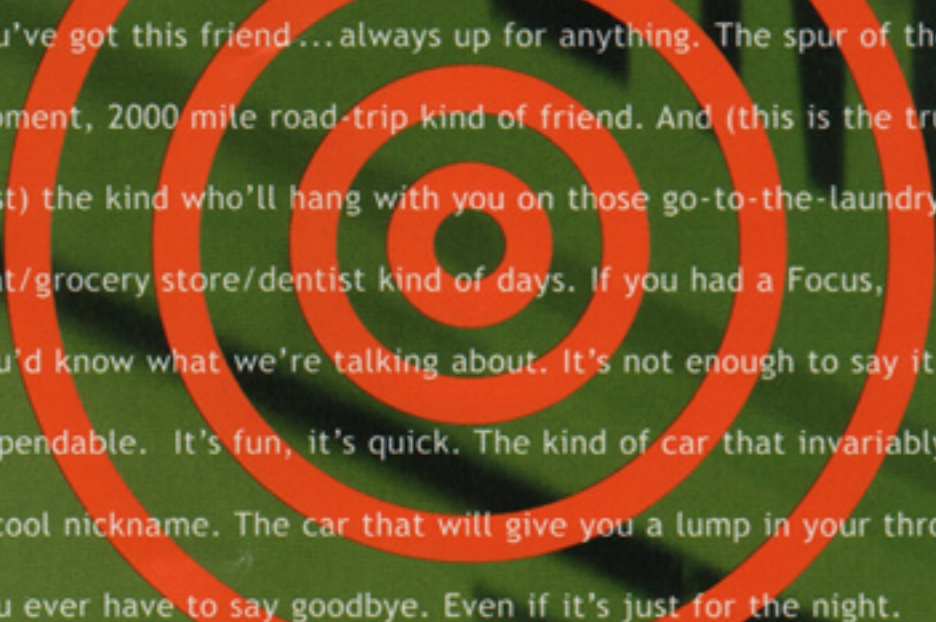
ZX2 SAFETY & SECURITY

	ZX2
Airbags* - Driver and Front Passenger	S
Child Safety Seat Tether Anchors	S
Interior Trunk Release	S
Remote Keyless Entry	O

*Always wear your safety belt and secure children in the rear seats.

**Standard on "Premium" Equipment Group, optional on "Deluxe" Equipment Group, not available with "Standard" Equipment Group.

Following publication of the catalog, certain changes in standard equipment, options and the like, or product delays, may have occurred which would not be included in these pages. Your Ford Dealer is your best source for up-to-date information. Ford Division reserves the right to change product specifications at any time without incurring obligations.



You've got this friend...always up for anything. The spur of the moment, 2000 mile road-trip kind of friend. And (this is the true test) the kind who'll hang with you on those go-to-the-laundry-mat/grocery store/dentist kind of days. If you had a Focus, you'd know what we're talking about. It's not enough to say it's dependable. It's fun, it's quick. The kind of car that invariably gets a cool nickname. The car that will give you a lump in your throat if you ever have to say goodbye. Even if it's just for the night.

focus



Sedan now doesn't mean sedate. Driving Focus ZTS is like being with the smartest, funniest person you know.

Always a quick response. Always entertaining.

Shown above painted in Pitch Black with its 16-valve Zetec sprinting effortlessly while its CD is cranked up.

FOCUS ZTS



Focus ZX3 in Sangria Red with optional 16" wheels.

FOCUS ZX3

It doesn't look like its brothers and sisters. And it certainly doesn't act like them. Maybe it's the odd number of doors. The three door has an entirely different outlook on life. Unique lines combined with terrific road manners, it's really got the form and function thing down.

FOCUS WAGON

Having a bunch of stuff to haul around isn't limited to those with 2.4 kids. And even if you have 3.6 offspring, you're not going to have that soccer-mom feeling behind the wheel of the Focus Wagon.



Focus SE Wagon shown in Jackpot Gold.





Focus LX Sedan wrapped in Medium Parchment cloth.
Optional equipment shown.

Room for five and gee, everything is handy too. You'll wonder if they started designing Focus from the inside out. (Actually, they did.)



15" aluminum 5-spoke wheels come with the ZX3 and SE models. Worth a couple of extra minutes to shine them up.

FEEL THE POWER



Focus comes with either the 2.0L SPI or the 2.0L Zetec engine, depending on the model and/or which one you opt for. One's really zippy. The other's super zippy. Think of two of your hyper pals after they've had a couple of double espressos. Now you've got the picture.



14" bolt-on look wheel covers...standard on LX Sedan. Makes the meter maid look twice.



New 16" aluminum 6-spoke wheels now standard on ZTS Sedan and available on ZX3. Bigger. Badder. Bolder. What a difference.

STANDARD FEATURES GALORE

Each and every Focus comes equipped standard with a lot of cool features. Check out these, talk with your dealer for the full scoop.

- | | |
|---|---|
| • Power Brakes | • Independent Front Suspension - MacPherson Strut |
| • Power Rack & Pinion Steering | • Front Stabilizer Bar |
| • Driver Seat Height Adjust - manual | • Front Wheel Drive |
| • 60/40 Split Fold Rear Seat w/Flip Up | • Clearcoat Paint |
| • Rear Seat Cushion | • Solar Tinted Glass |
| • SecuriLock™ Passive Anti-Theft System | • Soft Feel Instrument Panel |
| • Rear Window Defroster | • 13.2 Gallon Fuel Tank |
| • Control Blade SLA Independent Rear Suspension | • Center Console with 2 Cupholders |
| | • Trip Odometer |

FOCUS SEDAN STUFF

Focus Sedan (that means 4-doors to you non-car folks) You can choose from 4 different flavors of Focus Sedan:

LX: A ton of great standard features including:

- | | |
|--|--|
| • 2.0L SPI 14 Engine (110 hp and 125 lb-ft torque) | • AM/FM Cassette Stereo w/digital clock and 4 speakers |
| • 5-Speed Manual Transaxle | • Rear Window Defroster |

You can also choose a few options to make your Focus LX your own:

- | | |
|-------------------------------|-----------------------------------|
| • 4-Speed Automatic Transaxle | • Anti-Lock Braking System |
| • Air Conditioning | • Front Seat Side Impact Airbags* |

SE: Includes all of the standard stuff found in the LX plus:

- | | |
|---|--------------------------------------|
| • Air Conditioning | • Power Mirrors/Door Locks/Windows |
| • 15" Aluminum Wheels mounted to P195/60R15 tires | • Driver Center Armrest with Storage |
| • AM/FM Stereo w/single CD w/digital clock and 4 speakers | • All-Door Remote Keyless Entry |
| | • Bodycolor Bodyside Moldings |
| | • Variable Speed Intermittent Wipers |

SE also has a few options to choose from:

- | | |
|-------------------------------|----------------------------------|
| • 4-Speed Automatic Transaxle | • Front Seat Side Impact Airbags |
| • Anti-Lock Braking System | • Comfort Group** |

SE SPORT: Add some spice to your life, Sport comes with everything standard on SE plus:

- | | |
|--|----------------------------------|
| • 2.0L 16-valve Zetec engine (130 hp, 135 lb-ft of torque) | • Rear Spoiler |
| • Fog Lamps | • Leather-Wrapped Steering Wheel |
| | • Tachometer |

SE Sport also has a few options to choose from:

- | | |
|-------------------------------|----------------------------------|
| • 4-Speed Automatic Transaxle | • Front Seat Side Impact Airbags |
| • Anti-Lock Braking System | • Comfort Group** |

ZTS: The top-of-the-line, Focus ZTS comes with a 2.0L 16-valve Zetec engine, everything SE Sport has standard (minus the rear spoiler) plus these features (your every desire has finally been met...):

- | | |
|---|--|
| • 16" Aluminum Wheels on P205/50R16 Tires | • Driver's Side Lumbar Support and Map Pockets |
| • Anti-Lock Braking System | • Map/Reading Lights |
| • Speed Control | • Woodgrain appearance interior accents |
| • Tilt Telescoping Steering Wheel | |

ZTS options include:

- | | |
|---|----------------------------------|
| • 4-Speed Automatic Transaxle | • Leather-Trimmed Seats |
| • AdvanceTrac (includes Traction Control) | • Front Seat Side Impact Airbags |

*Always wear your safety belt and secure children in the rear seat.

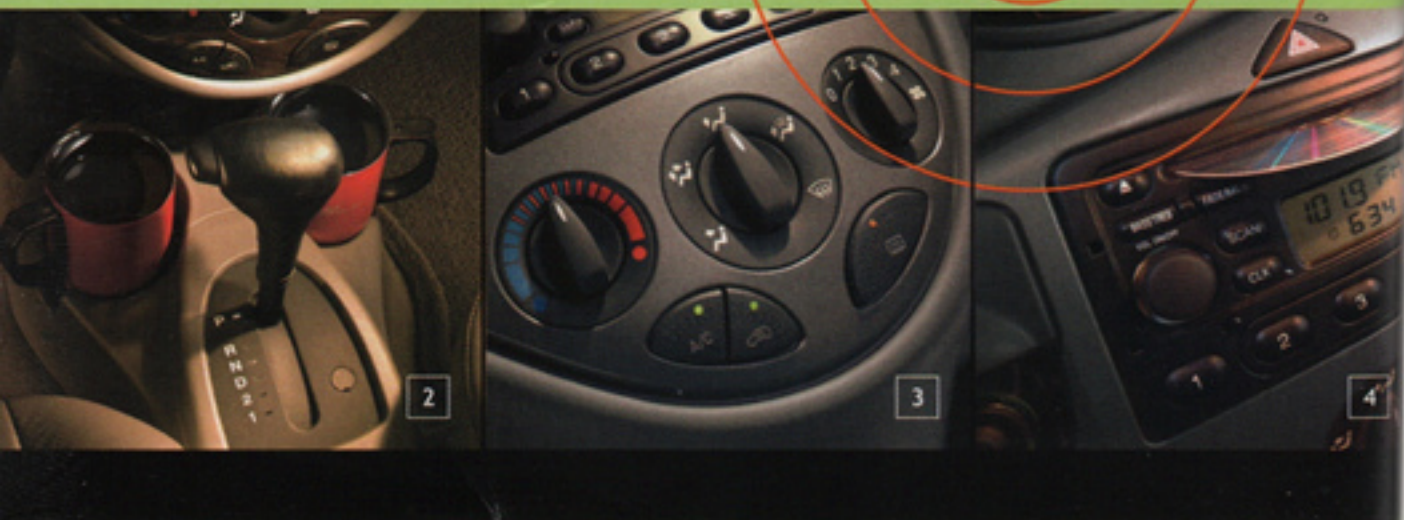
**Comfort Group includes Speed Control, Tilt/Telescoping Steering Wheel and Map/Reading Lights



1 The award-winning Focus is so well designed you'll get a feel for everything in no time. Our designers know you want this stuff to be a no-brainer. And it is. SE interior in Medium Graphite. Optional equipment. Nice.

2 "D" stands for "drive," right? In the case of Focus it should be "EFD"... "extremely fun drive."

3 Crank up the air or put a log on the fire—even the most technically-challenged can handle this instrument panel.



4 A single CD player is standard on SE models. Just slip in a disc to escape that morning "DJ" blather.

5 Amaze your friends. Amaze your family. Not only is there room for them, with a 60/40 split fold-down rear seat, that long piece of lumber they said would never fit. It fits.



SE WAGON: FEATURES AND STUFF

Focus SE Wagon: trust us, you can stuff a lot of stuff in the back.

STANDARD features include:

- 2.0L 16-valve Zetec engine (130 hp, 135 lb-ft of torque)
- 4-Speed Automatic Transaxle
- Air Conditioning
- Stereo Single CD Player, AM/FM radio w/digital clock and 4 speakers
- 15" Alloy Wheels mounted to P195/60R15 Tires
- SecuriLock™ Passive Anti-Theft System
- Power Mirrors/Door Locks/Windows
- All-Door Remote Keyless Entry
- Power Rack & Pinion Steering
- Independent Front Suspension
- Driver Center Armrest with Storage
- Rear Window Defroster
- Variable Speed Intermittent Wipers
- Bodycolor Bodyside Moldings

SE Wagon also has a few options to choose from:

- 5-Speed Manual Transaxle
- Anti-Lock Braking System
- Front Seat Side Impact Airbags
- Comfort Group includes speed control, tilt telescoping steering wheel and map/reading lights

FOCUS ZX3: A 3-DOOR HATCHBACK WITH A SERIOUS ATTITUDE

And because we are so accommodating, here are three great sets of standard features to choose from... hey, get it, ZX3, three equipment groups, three doors, did we plan this or what?

STANDARD:

- 2.0L 16-valve Zetec Engine
- 5-Speed Manual Transaxle
- 15" Alloy Wheels mounted to P195/60R15 Tires
- Stereo Single CD Player, AM/FM radio w/digital clock and 4 speakers
- Sport Bucket Front Seats with Adjustable Head Restraints and Tip/Return
- Fog Lamps
- SecuriLock™ Passive Anti-Theft System
- Power Rack & Pinion Steering/Brakes
- Leather-Wrapped Steering Wheel
- Tachometer/Trip Odometer
- Split/Fold Down Rear Seat
- Rear Window Wiper/Washer/Defroster
- Independent Front Suspension

You can also choose a few options to make Focus ZX3 your own:

- Air Conditioning
- Anti-Lock Braking System (ABS)
- Front Seat Side Impact Airbags

PREMIUM includes all of the standard stuff found in the Standard Group plus:

- Air Conditioning
- 16" Alloy Wheels mounted to P205/50R16 Tires
- Speed Control
- Tilt/Telescoping Steering Wheel
- Map/Reading Lights
- Driver Front Center Armrest

Focus ZX3 Premium also has a few options to choose from:

- 4-Speed Automatic Transaxle
- Moonroof - manual
- Anti-Lock Braking System (ABS)
- AdvanceTrac (includes Traction Control, requires ABS)
- Front Seat Side Impact Airbags

POWER-PREMIUM - c'mon, you deserve it...

(again, all of the standard stuff included in the Premium Group) plus:

- Power Windows/Mirrors/Door Locks
- All-Door Remote Keyless Entry

Jazz up your ZX3 Power-Premium with these options:

- 4-Speed Automatic Transaxle
- Moonroof - manual
- Anti-lock Braking System (ABS)
- AdvanceTrac (includes Traction Control, requires ABS)
- Front Seat Side Impact Airbags

Following publication of the catalog, certain changes in standard equipment, options and the like, or product delays, may have occurred which would not be included in these pages. Your Ford Dealer is the best source for up-to-date information. Ford Division reserves the right to change product specifications at any time without incurring obligations.



SE Wagon in Fort Knox Gold
(also available on LX, SE Sedan and ZTS)



ZX3 in Malibu Blue



ZX3 in Infra-Red
(available on all models)

CLOTH

Fabrics that will inspire you to keep the clutter to a minimum. (Mother always said not to hide your best features.)



ZX3 in Eggolk Yellow



SE Sport in Light Sapphire Blue
(also available on LX, SE Wagon and ZTS)



ZTS in Pitch Black
(available on all models)



ZTS in Twilight Blue
(available on all models)



ZTS in Jackpot Gold
(available on all models)



SE Sedan in Rainforest Green Clearcoat Metallic
(available on all models)

LEATHER

Great choices trimmed in leather. If your living room deserves it, why not your car? Exclusive Focus ZTS option.



Vehicles shown may include optional equipment.



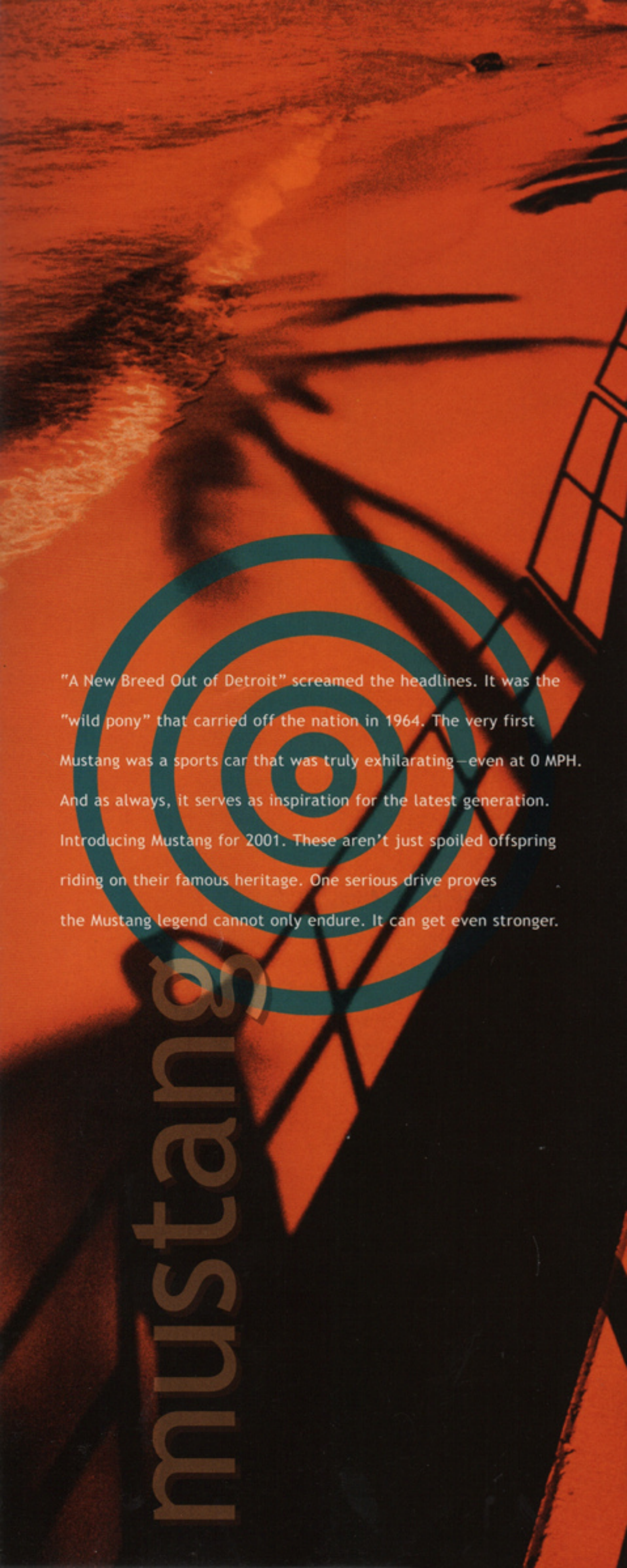
LX in Sangria Red
(available on all models)



SE Wagon in CD Silver
(available on all models)



SE Sedan in Cloud 9 White
(available on all models)

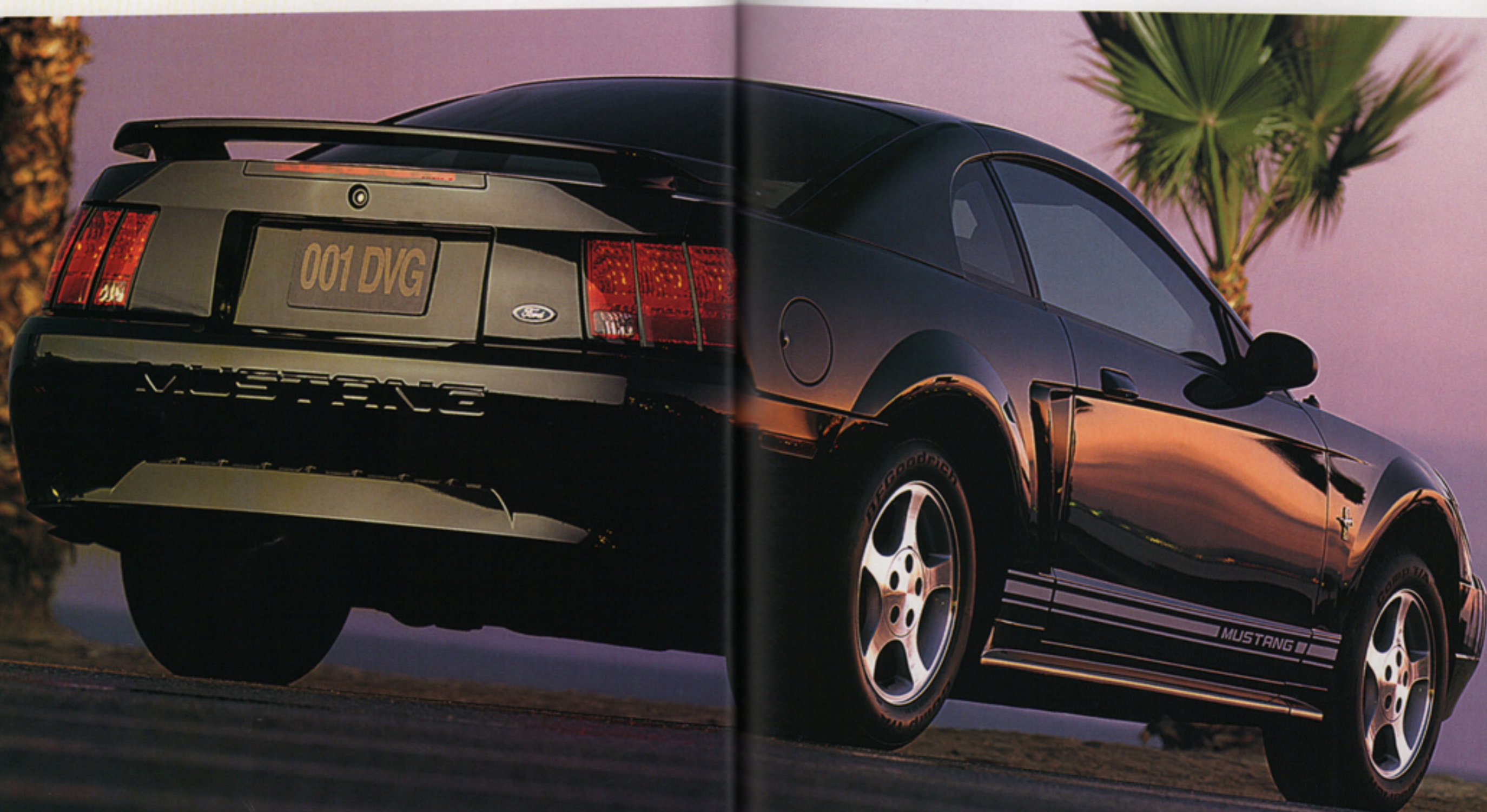


"A New Breed Out of Detroit" screamed the headlines. It was the "wild pony" that carried off the nation in 1964. The very first Mustang was a sports car that was truly exhilarating—even at 0 MPH. And as always, it serves as inspiration for the latest generation. Introducing Mustang for 2001. These aren't just spoiled offspring riding on their famous heritage. One serious drive proves the Mustang legend cannot only endure. It can get even stronger.

mustangs



Open road. Open top. Open throttle. There's a definite pattern here with the Mustang GT. And we like it. A lot. Shown in Performance Red Clearcoat.



Mustang Coupe in Black Clearcoat with Premium Equipment Group.

FORD MUSTANG

Over the years Mustang has earned its monikers. Boss. Cobra. Mach I. Today, even the base Mustang comes with potent credentials. With a split-port V6, 5-speed

manual transmission and a uniquely calibrated suspension, the 2001 Mustang stands poised to continue its muscle car dominance.



Ever since the first Mustang sprinted off the assembly line, racing has been integral to the improvement of the breed. Today, John Force and his Mustang Funny Car hold the NHRA quarter-mile record time (4.788 sec.) and top speed (324.05 mph). What a race horse.



Some people might sacrifice comfort for great performance. Mustang's interior begs the question, "But...why?"

Mustang GT trimmed in Medium Parchment leather. Optional equipment shown.

MUSTANG GT

Just mention the name Mustang GT and guys grin, girls swoon and Ford's competition starts to sweat. In addition to the standard features listed for the regular Mustang the GT has a few features unique to itself...

Choose a GT coupe or convertible and get:

- 4.6L SOHC V8 engine (260 horsepower and 302 ft. lbs. of torque, simply awesome)
- Dual Stainless Steel Exhaust (can you hear the rumble?)
- Suspension Package w/Variable Rate Coil Springs, Quadra-shock Rear Suspension
- 245/45ZR17 BSW Performance Tires
- Specially Designed Composite Hood and Side Scoops
- Fog Lamps
- Rear Spoiler
- Leather-Wrapped Steering Wheel
- Traction-Loc Axle



16" 5-spoke bright alloy wheels. They're bold. Strong. And very flashy. Just like the driver. Included with the Premium Group.



Yes, these 17" painted aluminum wheels are part of the GT Deluxe Equipment Group. But to say they're "standard" is a huge understatement.

DYNAMIC DUO



1 Something about the second stainless steel exhaust tip out the back of the GT that says "power—and lots of it." Maybe it's the 260-horsepower, 4.6 liter V8 it's attached to.



2 When you've got a ton of horses under the hood, you've got to keep them under control. Mustang's suspension has a way of distributing all that power equally.

CAN YOU SAY STAMPEDE?



This powerhouse isn't content with short trips into town. The deep-skirt modular 4.6 liter single-overhead-cam V8 delivers 260 horsepower. And at 302 ft.-lbs. of torque at 4,000 rpm, it's obviously happiest at a higher rpm. So take it out and let it run.

MUSTANG

As you would expect, an American icon should come well-equipped and Mustang fits the bill. Check out this list of impressive standard features:

Choose a coupe or convertible and get:

- Dual Electric Remote Control Mirrors
- Center Console w/armrest, storage bin, tissue holder, dual cupholders
- Instrumentation that includes tachometer, voltmeter, temperature, fuel and oil pressure
- Air Conditioning
- Power Brakes/Windows/Door Locks/Steering
- 3.8L EFI V6 engine kickin' 190 horsepower and 220 ft. lbs of torque
- 5-Speed Manual Transmission
- 15.7 gallon Fuel Tank
- Remote Keyless Entry
- Suspension - Front, modified MacPherson struts with front stabilizer bar
- Suspension - Rear, coil spring four bar link
- Rear Window Defroster
- Tilt Steering Wheel



15" 6-spoke cast aluminum wheels are included in the Standard Group on the V6 Coupe. Sure, you want to keep them shined-up...but, it's 2 a.m. already.



17" 5-spoke Premium aluminum wheels are available with GT Premium Group. It doesn't get any hotter than this.



1

1 Getting the most of what's under the hood starts with a cockpit designed to keep you in touch with all your controls. And with your comfort level.

2 Power rack-and-pinion steering with a 15:1 on-center constant ratio. Translation: It's gonna go where you want it to go.



2

3

3 The temperature, the music...these are probably the only things you'd change in your Mustang. And its superbly designed instrument panel makes it easy.

4 Nothing is music to your ears like the sound of a revved up engine...but the optional in-dash 6-disc MACH® 460 CD changer gives it plenty of competition.



4

Thinking about how to get your Mustang exactly the way you want it? We've made it easier. Mustang now has three Equipment Groups: Standard, Deluxe and Premium. Rest assured Standard doesn't mean stripped down and Premium...well premium means very premium.

STANDARD EQUIPMENT GROUP

Mustang Coupe Standard Group includes:

- | | |
|--------------------------------------|---|
| • 15" Painted Alloy Wheels | • Stainless Steel Exhaust |
| • P205/65R15 All-Season Tires | • Stereo CD/Radio/Cassette |
| • Electronic Ignition | • Air Conditioning |
| • Multi-port Fuel Injection | • Airbags* - Driver and Front Passenger |
| • Modified MacPherson Struts - Front | • Split-Fold Down Rear Seat |
| • Coil Springs - Rear | • SecuriLock™ Passive Anti-Theft System |
| • 4-Wheel Disc Brakes | |

In addition to these features, you can add the following option:

- Automatic Transmission

DELUXE EQUIPMENT GROUP

Mustang (coupe or convertible) or Mustang GT (coupe or convertible) Deluxe Group has the Standard Group items included above plus:

- | | |
|----------------------------------|--|
| • Rear Spoiler | • Cloth Front Sport Bucket Seats |
| • Power Driver's Seat | (GT coupe/convertible) |
| • Leather-Wrapped Steering Wheel | • Speed Control |
| (GT only) | • 17" Painted Aluminum Wheel (GT only) |

In addition to these features, you can add the following options:

- | | |
|---|---|
| • Automatic Transmission | • MACH® 460 In-Dash 6-Disc CD Changer |
| • Anti-Lock Brake System with Traction Control (requires Automatic Transmission on Mustang Coupe, standard on GT) | and AM/FM Stereo Radio |
| • Sport Appearance Group (Mustang only) | • Leather-Trimmed Front Bucket Seats (Mustang Convertible only) |
| | • Leather-Trimmed Front Sport Bucket Seats (GT only) |

PREMIUM EQUIPMENT GROUP

Mustang (coupe or convertible) or Mustang GT (coupe or convertible) Premium Group includes the Deluxe Group standard features plus:

- | | |
|--|--|
| • Automatic Transmission (optional on convertibles) | • Leather-Wrapped Steering Wheel |
| • 16" Bright Alloy Wheels | • Anti-Lock Brake System with Traction Control |
| • P225/55R16 All-Season Tires | • Leather-Trimmed Front Sport Bucket Seats (GT only) |
| • MACH® 460 In-Dash 6-Disc CD Changer and AM/FM Stereo Radio | • 17" 5-Spoke Premium Alloy Wheels (GT only) |

In addition to these features, you can add the following option:

- Leather-Trimmed Front Bucket Seats (standard on convertible)

*Always wear your safety belts and secure children in the rear seat.

Following publication of the catalog, certain changes in standard equipment, options and the like, or product delays, may have occurred which would not be included in these pages. Your Ford Dealer is the best source for up-to-date information. Ford Division reserves the right to change product specifications at any time without incurring obligations.



Zinc Yellow Clearcoat



Tropic Green Clearcoat Metallic



Laser Red Tinted Clearcoat Metallic



Performance Red Clearcoat

SITTING PRETTY

Mustang's cloth bucket seats come in a range of colors depending on which trim level you choose.



Please note that both Mustang models are available in all exterior colors.

SADDLE UP

Leather...horses. They just seem to go hand in hand, don't they? Available in four colors depending on model and exterior color.



Vehicles shown may include optional equipment.



Electric Green Clearcoat Metallic



True Blue Clearcoat Metallic



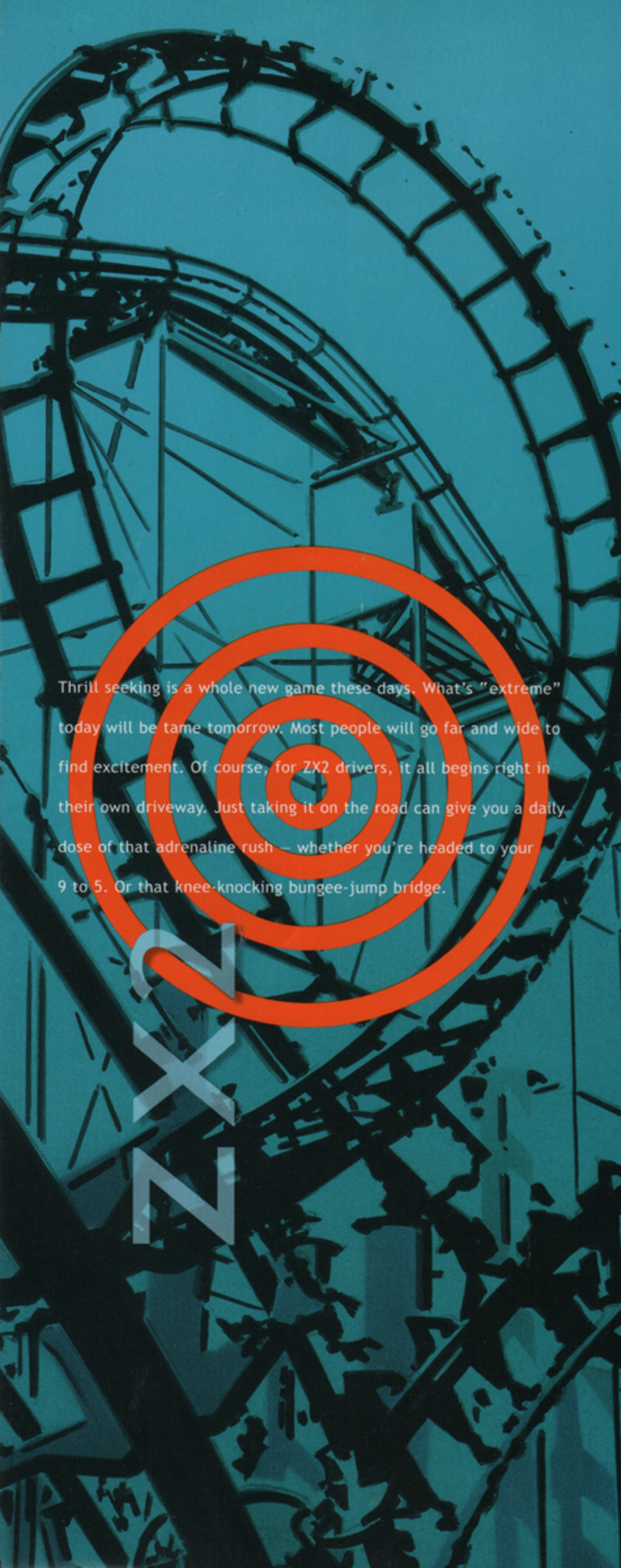
Black Clearcoat



Oxford White Clearcoat



Silver Clearcoat Metallic

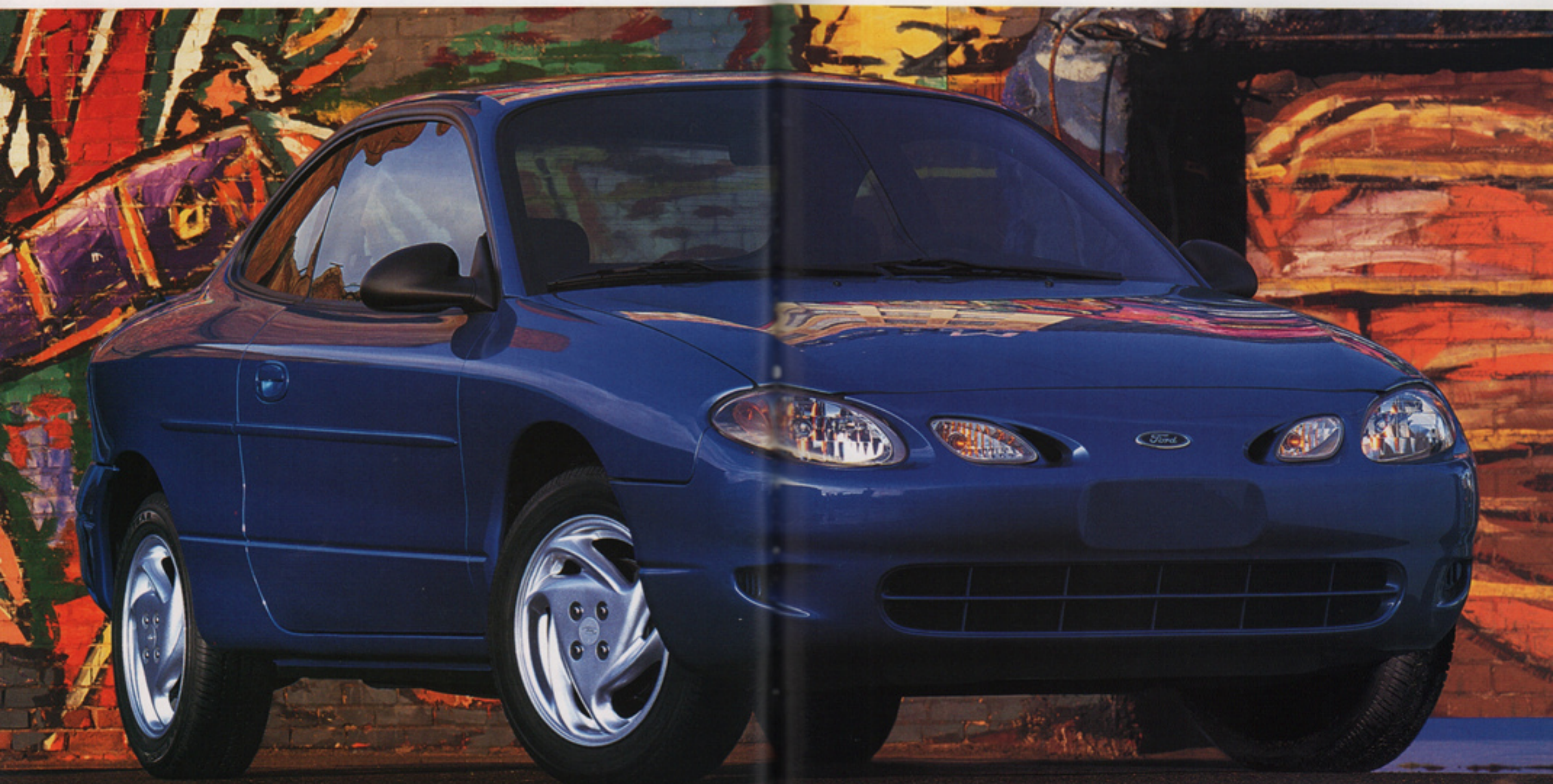


Thrill seeking is a whole new game these days. What's "extreme" today will be tame tomorrow. Most people will go far and wide to find excitement. Of course, for ZX² drivers, it all begins right in their own driveway. Just taking it on the road can give you a daily dose of that adrenaline rush – whether you're headed to your 9 to 5. Or that knee-knocking bungee-jump bridge.

ZX²



Yee ha. Wooo hoo.
If everyone drove ZX2, the world would be
all fun and games. Shown in Bright Red.



ZX2 shown in Bright Atlantic Blue Clearcoat Metallic.

FORD ZX2

Sounds like a code name for something, doesn't it? Well, you're right, Quickly translated it means "fun times two." It's nimble, easy to park (yeh, you'll

be doing a lot of that in this car). And ZX2 sticks to curves like a dotted white line. And you thought we were kidding about the fun. We weren't.



Comfortable. Inviting.
You could spend a lot of time here. Right? Right.
Shown in Midnight Black with optional equipment.



15" aluminum wheels are standard on ZX2. Now it really isn't necessary to reinvent the wheel.

FEEL THE VIBES



1 Something that looks as good as ZX2 ought to have the power to match. And the 2.0L DOHC 16V Zetec under the hood delivers the goods.

2 ZX2's rakish swept-back headlamps immediately say "look at me." You'll just have to forgive everyone for staring.



Opt for 14" chrome, 5 spoke wheels if you'd like. They're worth popping for the wheel cleaning service at the car wash.

EXTERIOR FEATURES AND OPTIONS

ZX2

Rear Spoiler	S
Power Mirrors	S
Power Moonroof	O
Body Colored Moldings	S
Clearcoat Paint	S

Standard - S Optional - O

SEE BETTER



Unless you're like your mother, you don't have eyes in the back of your head...standard power side view mirrors are the next best thing.

PERFORMANCE FEATURES AND OPTIONS

ZX2

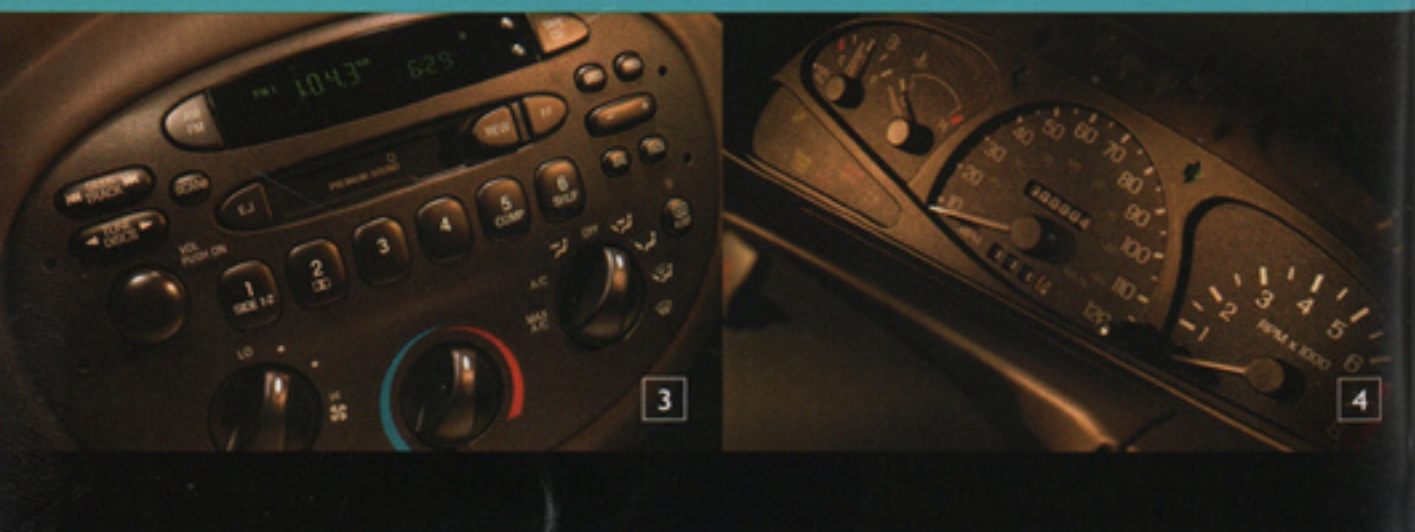
Front Wheel Drive	S
2.0L DOHC 16V Zetec engine - 5-speed manual	S
2.0L DOHC 16V Zetec engine - 4-speed automatic	O
15" aluminum wheels	S
P185/60R15 BSW tires	S
14" chrome 5-spoke	O
P185/65R14 BSW tires	O
Suspension - Independent rear Quadralink struts	S
Fuel Tank (12.7 gallons)	S

Standard - S Optional - O



1 Everything's in the right place in ZX2. We know you'll fit-in quite nicely. All of this seen through the ZX2's optional moonroof. Even birds have a nice view.

2 The all-door remote keyless entry with anti-theft is included in the optional power group. Makes life easy for you. Makes life rough for the bad guys.



3 A 6-disc trunk-mounted CD changer. AM/FM cassette. All with 80 watts of premium sound. O.K. Maybe just one more time around the block to hear that song again. Optional. Plus it's a piece of cake to crank up the heat or turn down the tunes. It's just a push-button away.

4 Push the gas pedal and watch the good times get revved-up with ZX2's easy-to-read dials.

INTERIOR FEATURES AND OPTIONS

ZX2

Air Conditioning	0
Power Group - remote keyless entry, windows, locks	0
Rear Window Defroster	S
Remote Trunk Release	S
Side Window Demisters	S
Secondary 12V Power Point	S
Dual Visor Mirrors	S
Radio: AM/FM Stereo Cassette with Premium Speakers	S
Premium Sound with 6-Disc CD Changer/AM/FM Stereo/Cassette	0
Solar Tinted Glass	S
Tachometer	S
Windshield Wipers: 2-speed with variable intermittent	S
Center Console - 2 cupholders and storage area	S
Floor Mats - front and rear	0
Comfort Group - dual map lights, leather-wrapped steering wheel, speed control, tilt steering wheel	0

SAFETY

Airbags* - Driver and Front Passenger	S
Anti-Lock Braking System	0

SEATING

Cloth Sport Bucket Seats	S
Leather-Trimmed Front Sport Bucket Seats	0
Split-Fold 60/40 Rear Seat	S

*Always wear your safety belt and secure children in the rear seat.

Following publication of the catalog, certain changes in standard equipment, options and the like, or product delays, may have occurred which would not be included in these pages. Your Ford Dealer is the best source for up-to-date information. Ford Division reserves the right to change product specifications at any time without incurring obligations.



Sunray Gold



Silver Frost



Toreador Red

CHOICE CLOTH

Sport fabrics come standard on all ZX2 models. Great looking, classic and comfortable. But with a little more edge than that "casual Friday" look.



Tropic Green



Bright Red



Black



Bright Atlantic Blue



Twilight Blue

COOL LEATHER

Or you can choose to dress up your front bucket seats in optional leather-trim. No matter what you think of leather... tough, dressy, cool—it seems like a natural in ZX2.



Vehicles shown may include optional equipment.



Mineral Grey



Oxford White

Dealer Stuff

Your Ford Dealer has some really trick stuff that allows you to make your new car your own. Here are just a few available on Focus.

"T4U" KITS ARE 6 UNIQUE WAYS TO MAKE YOUR NEW FOCUS TRULY YOURS.

Just choose a kit then order it from www.focus247.com or call 877-FORDT4U. It's that simple.



MOBILE PRO: The "Mobile Pro" T4U kit has everything to transform your Focus into a fully functioning office. It includes a mobile workstation, and a musette bag so you can store your laptop, phone and MP3 player.



ROAD TRIP: It has everything you need to prepare your Focus for those wanna getaway days. Included are a Coleman Cooler, a throw blanket and a cool photo album.



MAKIN' TRACKS: For those getaways that are bigger than a road trip. It includes a picnic basket, mini-grill and utensils plus a party lantern.



U CUSTOMIZE IT: This will allow you to take personal expression to a whole new level. Go crazy with restickable decals.



OFF THE BEATIN' PATH: It has everything you need to handle many adverse situations. Included is a backpack, first aid kit, flashlight and a heavy weight poncho.



HAVE SPOT WILL TRAVEL: Complete with an adjustable pet harness. Also included is a pet bed, lint roller, stow-and-go bowl and a food dispenser.

DEALER ACCESSORIES

See your dealer for availability.

Q: How cool will your Focus look with a totally custom Carbon-Fiber Dash applique?

A: Very



Need more space to stash your stuff? Opt for the armrest/storage bin.



Nothing but...

The optional netting keeps things from rolling around in the trunk.



Ford Credit's Red Carpet Lease
Many lease managers have completed many hours of training in a Red Carpet Lease program designed to make us the best in the business. We think you'll find a Red Carpet Lease is the best way to lease.

Under the New Vehicle Limited Warranty, you'll receive bumper-to-bumper no-deductible coverage on your new Ford vehicle for 3-years/36,000-miles. You'll also receive unlimited-mileage, no-deductible corrosion perforation coverage for five years. Ask your Ford Dealer for a copy of this warranty.

During its 3-year/36,000-mile limited warranty period, every new Ford vehicle includes the assurance and support of a 24-hour emergency Roadside Assistance program. Roadside Assistance includes such services as fuel delivery, tire changes, jump starts, and help when you are locked out of your vehicle. Ask your Ford Dealer for complete details about this program.

Complete information on our vehicle lineup is available on our web site. To get more information before you visit your Ford Dealer, please visit us at www.fordvehicles.com. Likewise, to get details on various financing options available on your new Ford vehicle, please visit our web site at www.fordcredit.com. Doing so can give you a head start before talking to your Ford Dealer about financing your new Ford vehicle.

