

DODGE

1989

Colt Imports





Colt GT Turbo shown in Bright Red

Some of the equipment shown or described throughout this catalog is available at extra cost.

About this catalog: We have tried to make this catalog as complete as possible. However, since the time of printing, some of the information you'll find here may have been updated. Your dealer has details, and you should ask him for current information before ordering.



Take-off Time.

Its all-new aerodynamic shape promises performance. Its new 1.6-liter 16-valve turbocharged DOHC ECI engine delivers.

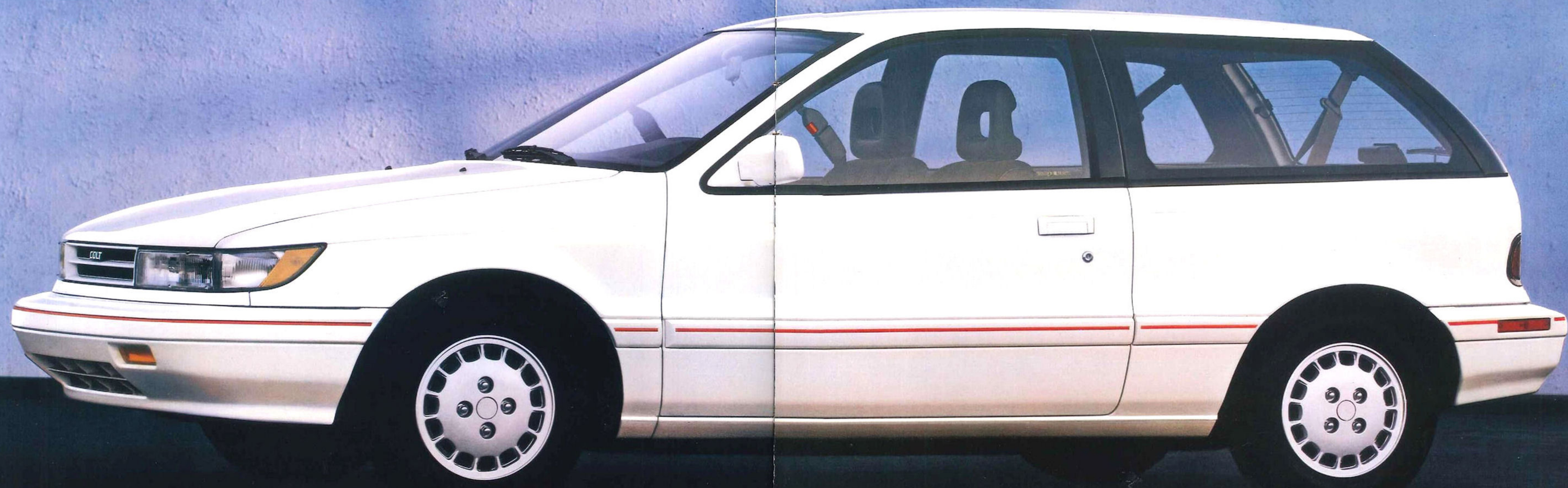
But unless you catch one revving at a light, the new front-drive three-door hatchback Colt GT with optional Turbo Package may always be a blur, so we'll describe it for you.

Stylishly rounded lines with sporty color-keyed front air dam extension, side sill extensions, rear roof spoiler, and dual electric mirrors. All covered with monochromatic paint that includes bumpers, rub strips, moldings, and door handles—and all set off by turbo decals and dual chrome exhaust tips.

Underneath, a special race-bred GT sport suspension teams with four-wheel disc brakes, 14-inch sport steel wheels, and a 3.5-inch wider rear stance to help Colt GT Turbo stick to what it handles best—the streets.

The sporty Colt GT Turbo back-glow instrument panel is ready to rev with a standard tachometer and digital clock. The sport steering wheel both tilts and telescopes for total driver comfort.





Colt GT shown in White



Free Time.

Spare time is for good times. And the Colt GT takes a good time with it wherever it goes.

A new standard 1.5-liter multipoint electronically fuel-injected engine gets you away from the lights faster. It should. Mated to a standard five-speed manual overdrive transaxle, this power plant pumps out almost 19 percent more horsepower than the previous standard engine. There's also an optional easy-to-drive three-speed automatic transaxle available on Colt GT.

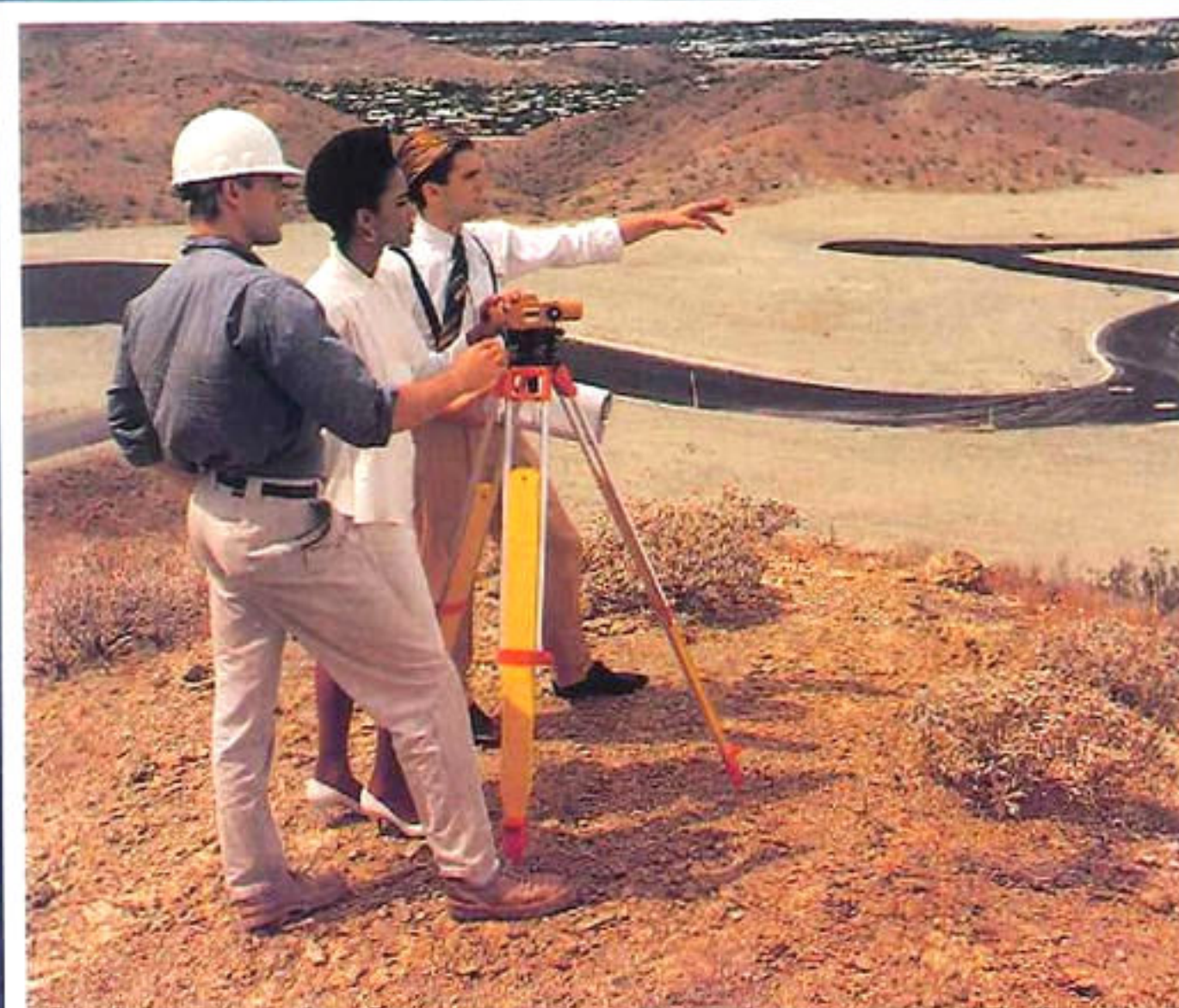
The front-wheel drive Colt GT offers the comfortable ride and responsive handling provided by front MacPherson-type struts and a new three-link rear suspension.

And Colt GT combines all this with a monochromatic paint treatment that covers its durable body, bumpers, rub strips, moldings and door handles to provide a sporty, contemporary look.





Colt E shown in Light Blue



Anytime.

The all-new front-wheel drive Colt E is ready to make its move—you pick the time and place.

The new aerodynamic three-door hatchback Colt E offers a wide, road-hugging stance for improved stability, and a new sporty rear end hatch design that provides maximum interior space. In front, attractive new wide-and-low styling hints at the Japanese heritage that makes this car so right for the American road.

Add on a powerful 1.5-liter multipoint electronically fuel-injected engine, smooth-shifting five-speed manual transaxle, a front MacPherson-type strut and new three-link rear suspension for a more comfortable ride, power-assisted front disc brakes, and rack-and-pinion steering—all standard—and you've got a lot of good reasons to go Colt E.

Saving Time.

All Colts are economical, but this is one of the most enjoyable ways to save money ever invented. Like the Colt GT and the Colt E, the base Colt's hatch opens wide to accommodate more cargo than ever before. A responsive 1.5-liter multipoint electronically fuel-injected engine and four-speed manual transaxle are standard.



Colt shown in Silver

Class Time.



If you thought the Colt GT Turbo Package was just good looks, power, and performance—think again. Inside, the Colt GT Turbo offers full-cloth sport front bucket seats. Conveniences such as power-assisted steering, fixed intermittent windshield wipers, rear wiper/washer, remote fuel door release, remote liftback release, and even a footrest are standard.

All Colts this year boast a new automatic passive restraint system for the front bucket seats, plus new standard rear shoulder and lap belts. In addition, legroom, shoulder room, and cargo room are all increased. Colt GT Turbo Sport interior shown in Gray with Red and Charcoal accents.

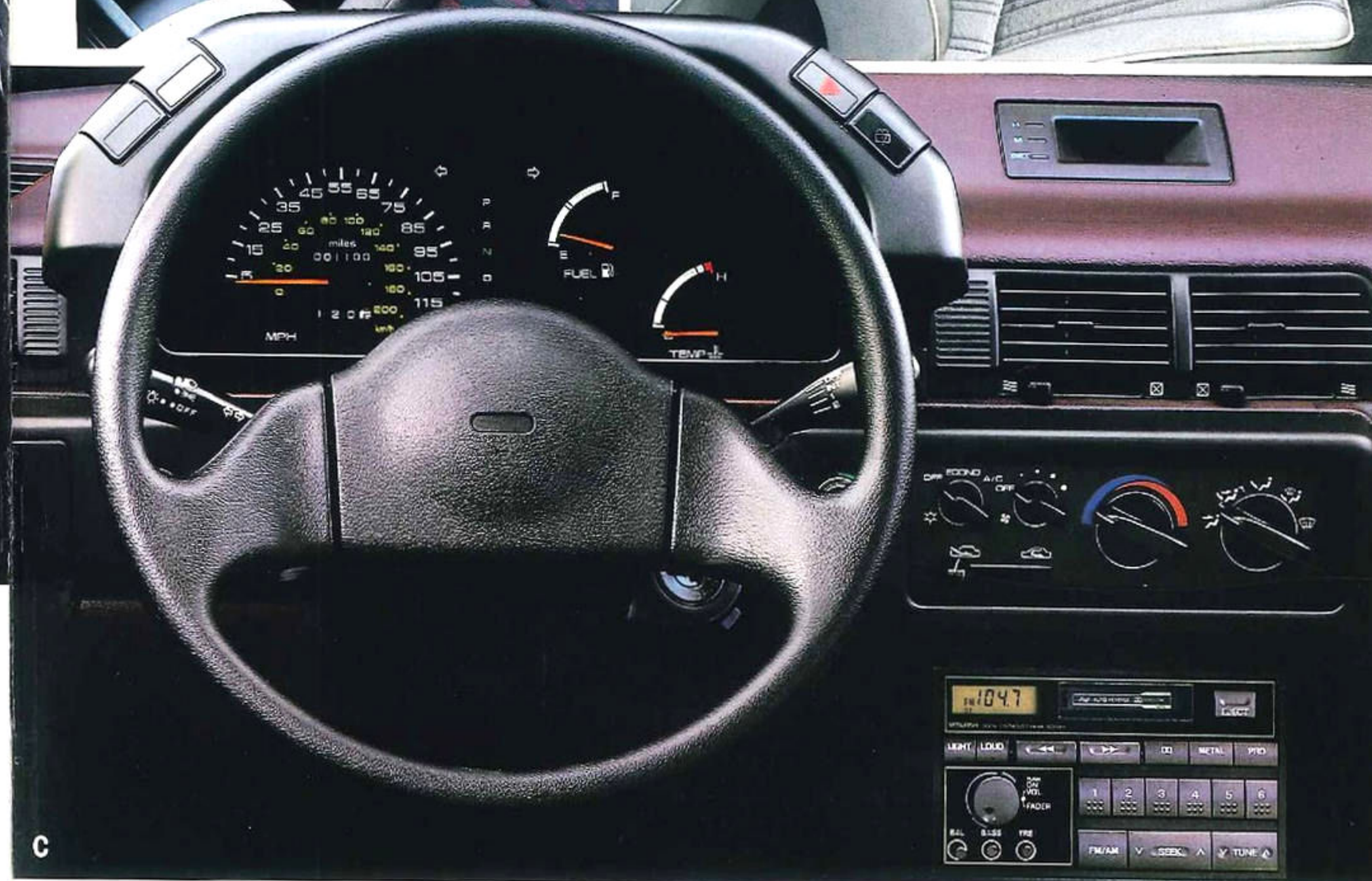


The Colt GT interior offers the luxury of full-face cloth front low-back reclining bucket seats, a center console with storage area (standard on all Colt models), and carpeting in the cargo area. Colt GT interior shown in Red.



The Colt E features front low-back cloth and vinyl reclining bucket seats. An electric rear window defroster is standard. Colt E cloth and vinyl interior shown in Blue.

Standard Time.



A. This all-new center console offers convenient storage for on-the-road necessities.

B. The base Colt interior offers rugged, front low-back vinyl bucket seats and features a standard automatic passive restraint system, as shown in the GT and E interiors pictured on opposite page. Both passenger and cargo areas are fully carpeted. Base Colt vinyl interior shown in Gray.

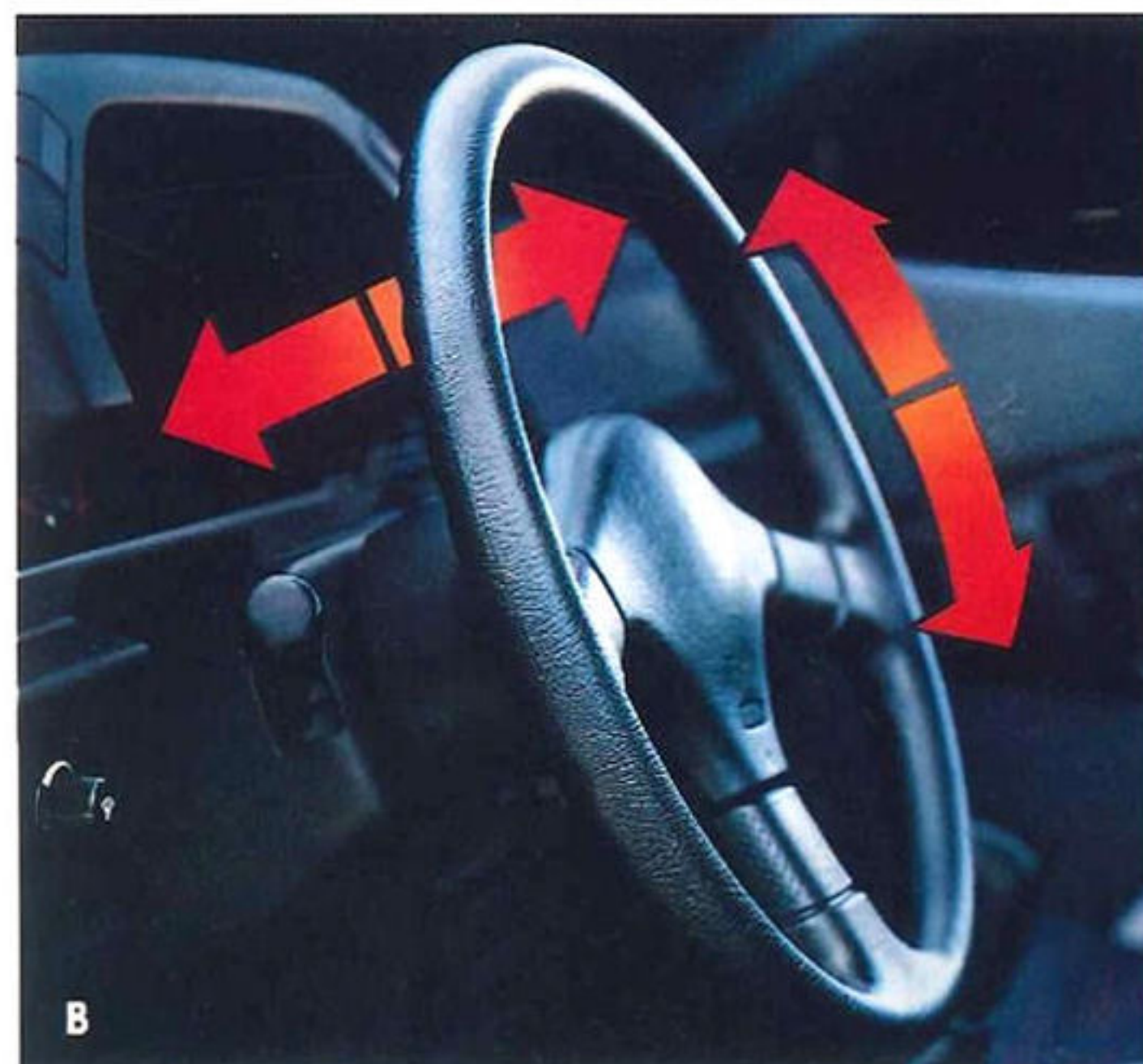
C. An all-new standard wraparound back-glow instrument panel features light-touch adjustments and large analog gauges that read at a glance. Low fuel, oil pressure and parking brake warning lights are standard.

D. A large storage tray slides easily under the passenger front seat to conceal items of value. (Colt GT and GT Turbo only.)

E. An innovative split rear seat folds forward, together or separately, to accommodate a variety of passenger and cargo combinations.



Decision Time.

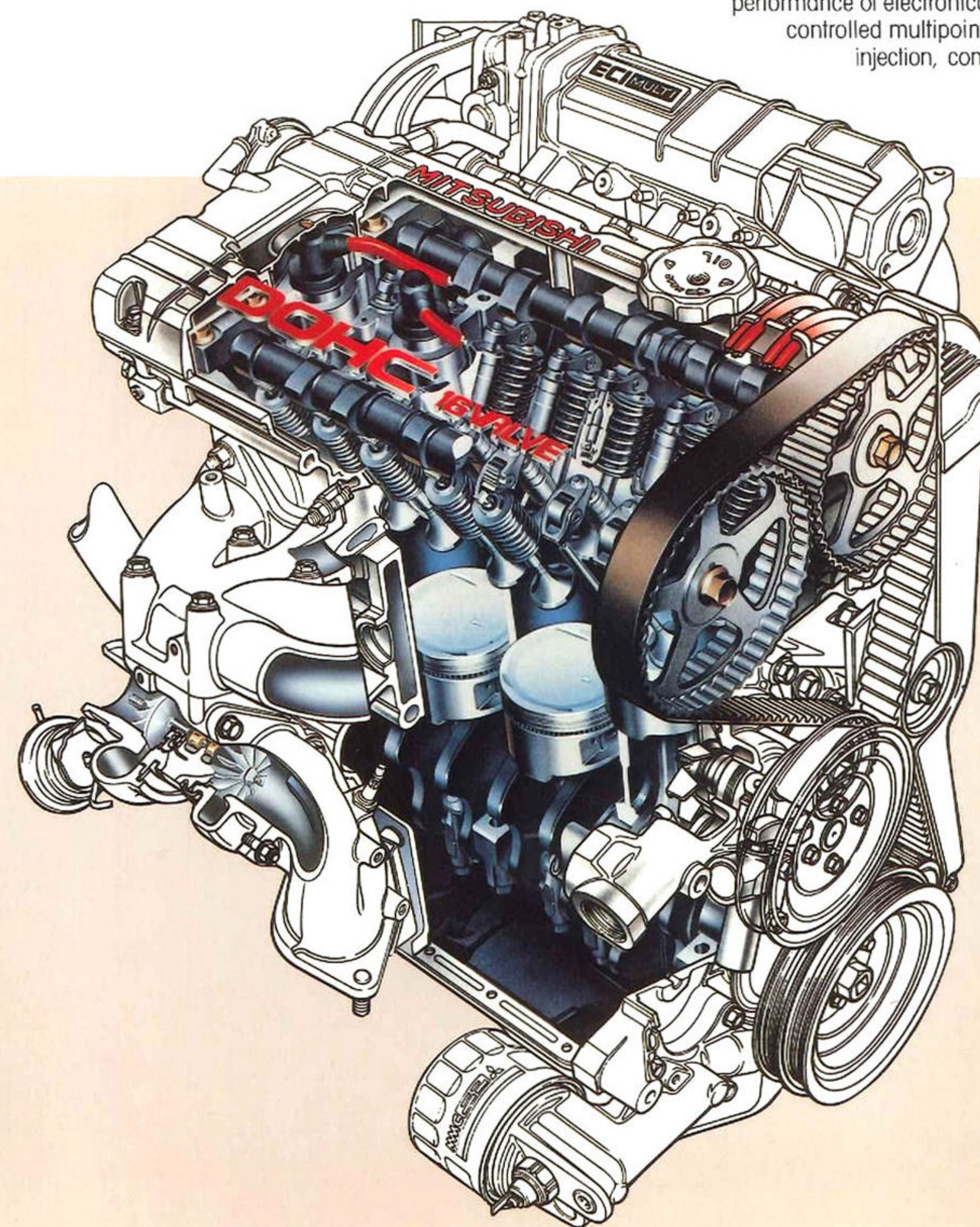


- A.** A convenient rear wiper/washer whisks rain and snow from your rear window. Optional on Colt E and GT, included with optional Colt GT Turbo Package.
- B.** A tilt and telescopic steering column, available in the Colt GT Turbo Package, provides room for individual differences.
- C.** Choose the Colt GT or GT Turbo Package and make good use of the handy map pockets located on the insides of the doors.
- D.** A rear security panel that keeps cargo and valuables out of view is standard on Colt GT and Colt GT Turbo, optional on other models with the AM/FM stereo radio.
- E.** Chill out with Colt's easy-touch optional air conditioning system.
- F.** An AM/FM/MX electronically tuned stereo radio is optional on the Colt, Colt E, or Colt GT.
- G.** An AM/FM/MX electronically tuned stereo radio with cassette tape player is optional on the Colt GT.
- H.** Choose the optional Colt GT Turbo Package and optional 14-inch cast aluminum road wheels, and enjoy the exceptional listening provided by an optional AM stereo*/FM stereo/MX electronically tuned radio with cassette tape player, graphic equalizer, and Dolby B Noise Reduction†

*Some AM stereo broadcasting may not be compatible with this radio.

†Dolby B is a trademark of Dolby Laboratories.

Quality Time.



A. Standard Power.

This year, all Colts except the GT Turbo feature a new standard 1.5-liter, four-cylinder, multipoint electronically fuel-injected engine that offers almost 19 percent more horsepower than the previous standard engine.

B. Turbocharged Power.

The Colt GT Turbo's new 1.6-liter DOHC turbo-charged ECI engine offers 16-valve response that pumps out an estimated 28 percent more power than the previous turbo. The 1.6-liter DOHC also offers the consistent performance of electronically controlled multipoint fuel injection, combined

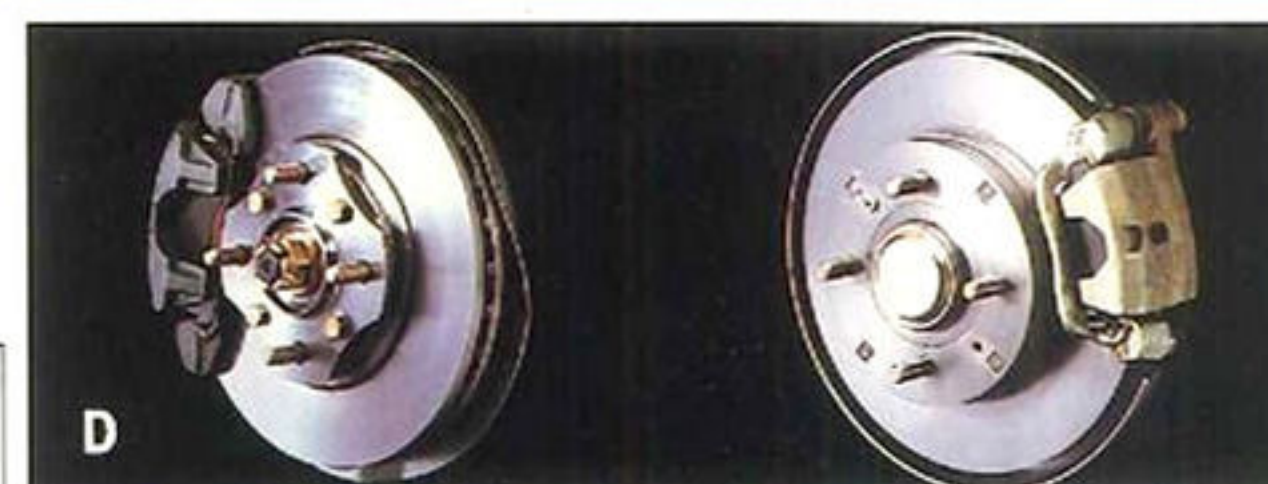
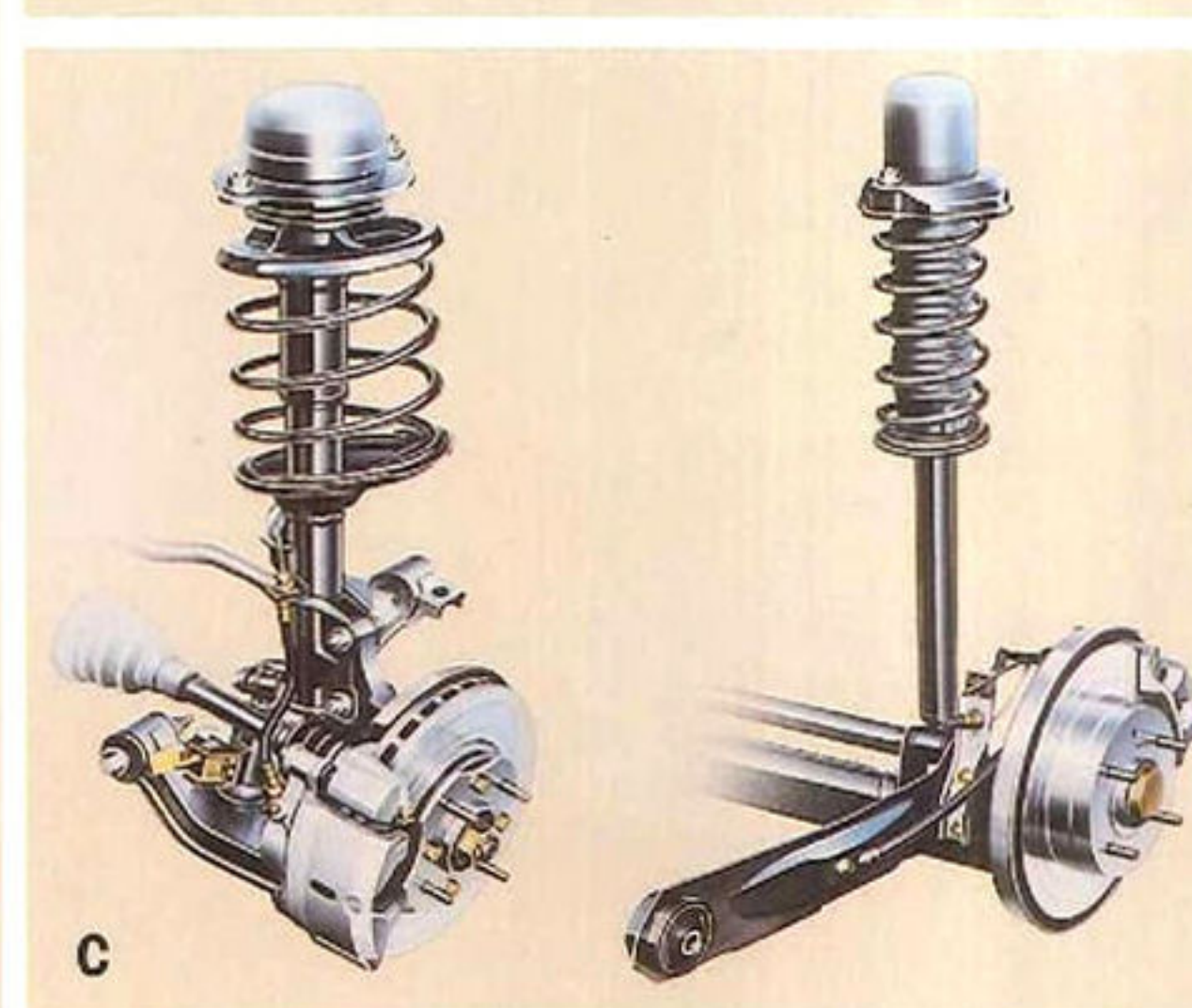
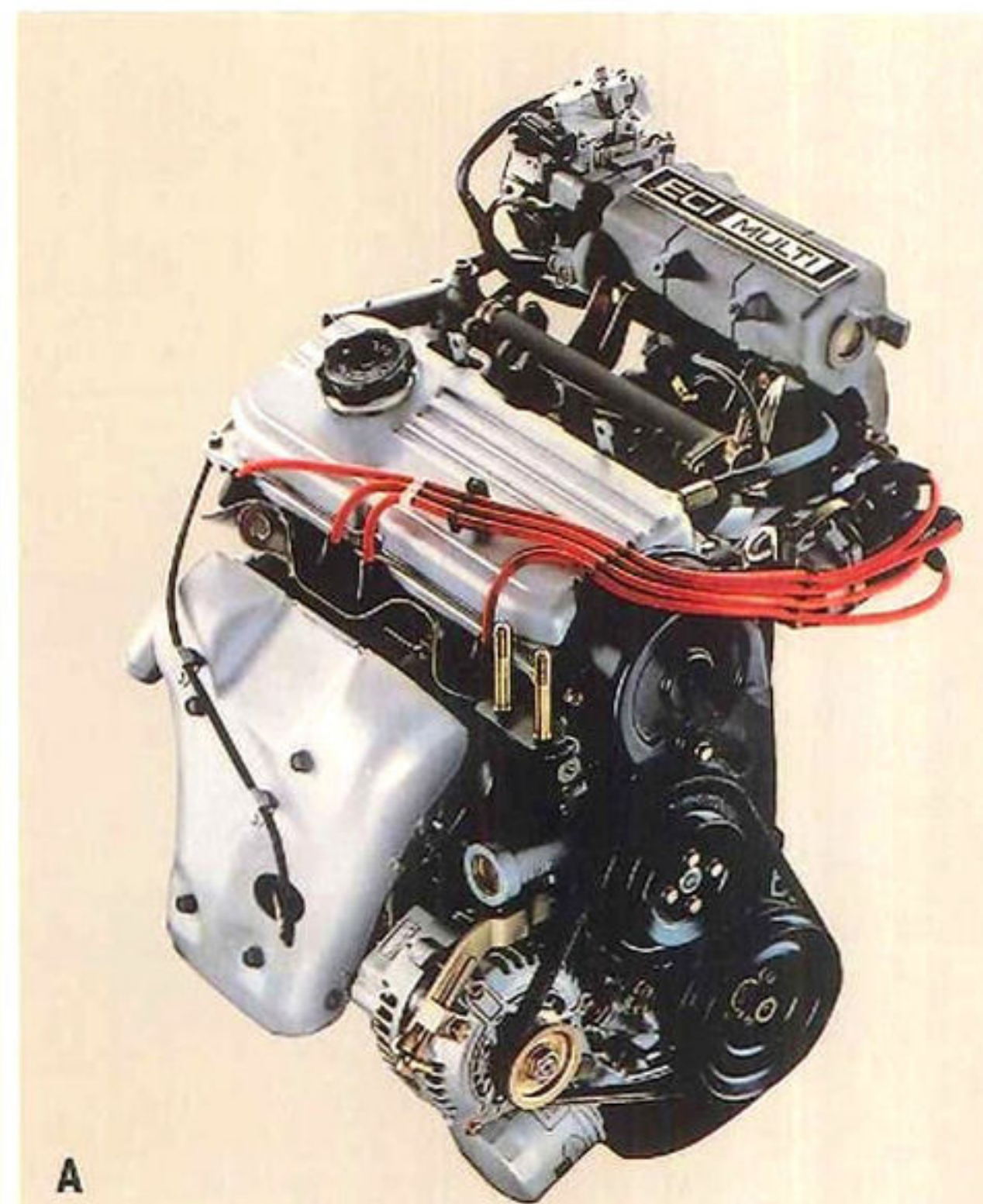
with the improved torque provided by this engine's roller arm design.

C. Sport Suspension.

An innovative new suspension, available on GT Turbo models, incorporates frequency-responsive and position-dependent shock absorbers with a liquid-sealed lower-arm insulator at the front, and gas shock absorbers at the rear for stability at all speeds. The system also includes a strengthened front stabilizer plus sports-car-like ball joints at the front to improve high-speed cornering ability. (Left C: Front, Right C: Rear)

D. Four-Wheel Disc Brakes.

Four-wheel front-ventilated disc brakes, included in the optional Colt GT Turbo Package, offer improved stopping performance and increased fade resistance. (Left D: Front, Right D: Rear)



COLT BUILT BY MITSUBISHI MOTORS CORPORATION.
SOLD AND SERVICED BY OVER 3,000 DODGE DEALERS.

Facts and Figures



MECHANICAL FEATURES	COLT	COLT E	COLT GT
Alternator—75-ampere	S	S	S
Battery—12-volt, maintenance-free	S	S	S
Brakes—Power-assisted: front disc, self-adjusting rear drums with dual proportioning valve	S	S	S
Clutch—Single, dry plate, mechanical actuator	S	S	S
Engines □ 1.5-liter multipoint EFI □ 1.6-liter DOHC ECI turbocharged	S N	S N	S P
Exhaust System—Stainless steel	S	S	S
Front-Wheel Drive	S	S	S
Fuel Injection—Electronic, multipoint	S	S	S
Stabilizer Bar—Front	S	S	S
Steering □ Manual, rack-and-pinion □ Power-assisted	S N	S E	S E
Suspension □ Front: independent MacPherson-type struts and coil springs □ Rear: three-link trailing arm and coil springs	S S	S S	S S
Transaxles □ Four-speed manual □ Five-speed overdrive manual □ Three-speed automatic	S N N	N S N	N S E
EXTERIOR FEATURES			
Bumpers □ Energy-absorbing, front and rear: charcoal □ Body color with charcoal rub strips	S N	N S	N S ¹
Fuel Filler Door—Locking	S	S	S
Glass—Tinted: all windows	E	E	E
Headlights—Halogen: aerostyle with replaceable bulbs	S	S	S
Mirrors □ Aerostyle, left: manual □ Aerostyle, left: black with remote mechanism □ Dual electric color-keyed remote (right convex)	S N N	S N N	N S P
Tires □ P145/80R13 steel-belted radial black sidewall (set of four) ² □ P155/80R13 steel-belted radial black sidewall (set of four) ² □ P195/60R14 steel-belted radial black sidewall (set of four) ²	S N N	N S N	N S P
Wheels □ 13-inch argent, styled-steel with black center cap (set of four) □ 13-inch argent, styled-steel with bright center cap (set of four) □ 14-inch argent, sport steel with bright center cap and trim ring (set of four) □ 13-inch trim rings (set of four) □ 13-inch cast aluminum road wheels (set of four) □ 14-inch cast aluminum road wheels (set of four)	S N N N N N	N S N E E N	N S P S E E ³
Windshield Wipers □ Two-speed □ Intermittent, fixed □ Wiper washer: rear window	S N N	S N E	S E E

INTERIOR FEATURES	COLT	COLT E	COLT GT
Air Conditioning	E	E	E
Carpeting □ Needled in passenger and cargo compartments □ Cut pile in passenger compartment and needled in cargo compartment	S N	S N	N S
Carpet Protectors	N	E	E
Cigarette Lighter	N	S	S
Clock—Electronic digital	N	N	E
Console—With storage bin	S	S	S
Defroster—Rear window: electric ⁴	E	S	S
Demisters—Side windows	S	S	S
Hood Release—Inside	S	S	S
Lights □ Dome, dual brake system warning, oil pressure, parking brake, battery, ashtray, fasten belts/hazard warning system, low fuel warning □ Low washer fluid warning	S N	S N	S P
Mirrors □ Inside □ Inside, day/night	S N	S N	N S
Radios □ AM/FM/MX stereo, electronically tuned □ AM/FM/MX stereo with cassette tape player, electronically tuned □ AM stereo ⁵ /FM stereo/MX with cassette tape player, electronically tuned, with graphic equalizer	E N N	E N N	E E E ^{3,7}
Security Panel—Rear	E ⁶	E ⁶	S
Storage—Under passenger seat	N	N	S
Trip Odometer	S	S	S

S—Standard. E—Extra cost. P—Package. N—Not available.

¹ Color-keyed bumpers and rub strips. ² Includes compact, limited-service spare tire. ³ Available at extra cost with optional GT Turbo Package only.

⁴ Required on all passenger cars registered in New York state. ⁵ Some AM stereo broadcasting may not be compatible with this radio. ⁶ Included with AM/FM stereo radio option only. ⁷ Available only when 14-inch cast aluminum road wheels are ordered.

COLT GT THREE-DOOR TURBO PACKAGE

- 1.6-liter DOHC ECI turbocharged engine with bright dual exhaust tips
- Power-assisted ventilated four-wheel disc brakes
- Heavy-duty five-speed manual overdrive transaxle
- P195/60R14 steel-belted radial black sidewall tires (set of four)
- Sport steering wheel
- Tilt and telescope steering column
- Turbo decals
- Sport suspension
- Sport bucket front seats
- Tachometer and low washer fluid warning light
- 14-inch argent sport steel wheels with bright trim rings (set of four)
- Dual color-keyed electric outside mirrors
- Fixed intermittent windshield wipers
- Remote fuel filler door release
- Remote hatchback release
- Driver footrest
- Cargo area light
- Power-assisted steering
- Digital clock
- Rear window wiper/washer
- Color-keyed "Aero Parts": front air dam extension, side sill extensions, rear roof spoiler

SPECIFICATIONS	ALL COLT MODELS
Wheelbase	93.9"
Overall Length	158.7"
Overall Width	65.5"
Overall Height	52.0"
Track—Front —Rear	56.3" 56.3"
Turning Diameter	30.5'
Estimated Curb Weight (base model)	2,205 lbs

DIMENSIONS		ALL COLT MODELS		
Headroom—Front —Rear		38.3" 36.9"		
Legroom—Front —Rear		41.9" 32.5"		
Hiproom—Front —Rear		52.8" 42.5"		
Shoulder Room—Front —Rear		53.5" 52.1"		
Cargo Capacity (cubic feet) □ Rear seatback raised □ Rear seatback lowered		11.5 34.7		
Fuel Tank (gallons)		13.2		
ESTIMATED EPA MILEAGE		CITY MPG/ HWY. MPG		
Four-speed manual, 1.5-Liter		32/38		
Five-speed manual, 1.5-Liter		30/35		
Three-speed automatic, 1.5-Liter		28/30		
Five-speed manual, 1.6-Liter Turbo		23/29		
COLOR COMBINATIONS	MODELS			
EXTERIOR COLOR	COLT	COLT E	COLT GT & GT TURBO	INTERIOR COLORS
White	X	X	X ¹	Gray
White			X ²	Red
Silver	X	X	X	Gray
Bright Red		X	X	Gray
Black			X	Gray
Black			X ²	Buckskin
Light Blue	X			Gray
Light Blue		X		Dark Blue
Medium Blue		X		Dark Blue
Turquoise	X			Gray
Turquoise		X		Buckskin
Medium Buckskin		X		Buckskin
Light Buckskin		X		Buckskin

¹Available on GT Turbo only. ²Not available on GT Turbo.

PROTECTION

Colt three-door hatchbacks, built by Mitsubishi Motors Corporation, and imported for Chrysler Motors Corporation, are covered by a 36-month or 36,000-mile basic car limited warranty (excludes adjustments, wear items and maintenance). There is additional warranty coverage on power train components (36 months or 50,000 miles); plus outer panel rust-through protection (84 months or 100,000 miles). No deductible applies. Restrictions apply. See your dealer for details and a copy of the limited warranty.

If replacement parts are needed, visit your dealer for genuine Mitsubishi parts, imported and distributed by MOPAR.

Additional peace-of-mind protection for Chrysler Motors Corporation imports built by Mitsubishi is available through Chrysler Service Contracts. The Contracts are in a variety of time and mileage combinations to meet your needs.

These contracts provide additional time and mileage coverage after the limited warranty expires. Towing and car rental allowances are included. See your dealer for details.

All product illustrations and specifications are based upon current information at the time of publication approval. Although descriptions are believed correct, accuracy cannot be guaranteed. Chrysler Motors Corporation reserves the right to make changes from time to time, without notice or obligation, in prices, specifications, colors and materials, and to change or discontinue models. See your dealer for the latest information.

Certain models, packages and options are subject to specific restrictions, requirements or late availability. See your dealer for the latest ordering information.

Chrysler Credit Financing

Chrysler Credit offers a variety of finance programs that will help make your new vehicle even more affordable. These special finance and leasing programs are designed to meet the needs of today's automotive buyer. They include...Gold Key Lease, America's Choice Payment Plan, College Graduate Plans, Retail Financing, and more. Ask your salesperson for details.