



COMMERCIAL VEHICLES

1990



DODGE BUILDS "JOB-TOUGH" TRUCKS.

Dodge offers an extensive line of commercial vehicles for 1990, built tough to meet America's work needs. You can select from a wide variety of pickups and chassis cabs, including new Dakota and full-size Ram Club Cab pickup models, as well as vans and wagons. They are all designed to provide years of dependable service with a wide variety of applications and conversions complemented by Dodge Truck technical innovations.

We are confident of the quality and durability of Dodge trucks, which is why we can offer the industry's most comprehensive warranty coverage.* For these reasons and more, you can be confident with the Dodge commercial truck line—engineered and manufactured tough for today's work environment.

*See back cover for details.

Index

| | |
|--|--------------------|
| Dodge Cummins Turbo Diesel Models | Pp. 2 & 5 |
| Engineering | Pp. 3 & 4 |
| Chassis Cabs | Pp. 6, 7, 8 & 9 |
| Pickups | Pp. 10 & 11 |
| Caravan C/V | Pp. 12 & 13 |
| Ram Vans | Pp. 14 & 15 |
| Ram Wagons | Pp. 16 & 17 |
| MOPAR, Warranties and Truck Color Availabilities | P. 18 (Back Cover) |

TRUCKS SHOWN ON COVER:

D350 Diesel Van Body.
B250 Van.
D350 Diesel Wrecker.



ENGINEERING.

Today's Dodge trucks are world-class products born of the finest computer-aided design and manufacturing techniques available. Each truck is subjected to extensive testing and quality control processes in its manufacture, using the very latest in electronic, optical, and laser-checking devices.

Thus, you can be sure the Dodge truck you buy will stand up to the tough day-to-day pounding of commercial usage, and that it will last.

New for the '90s.

Those of you who need more cab room on the job will be glad to hear that Dodge now offers two new additions to its 1990 truck lineup—the Dodge Dakota and full-size Ram Club Cab models.

The Dakota Club Cab model is available on two-wheel drive pickups with a standard 6½-foot work box. It features an optional 60/40 fold-up rear seat with lockable storage space beneath.

The full-size Club Cab models include the D150 with a 6½-foot or 8-foot box ... D250 with an 8-foot box and W150 or W250 models with the 8-foot box. It has two standard fold-up jump seats and offers more than 34 cubic feet of additional storage space.

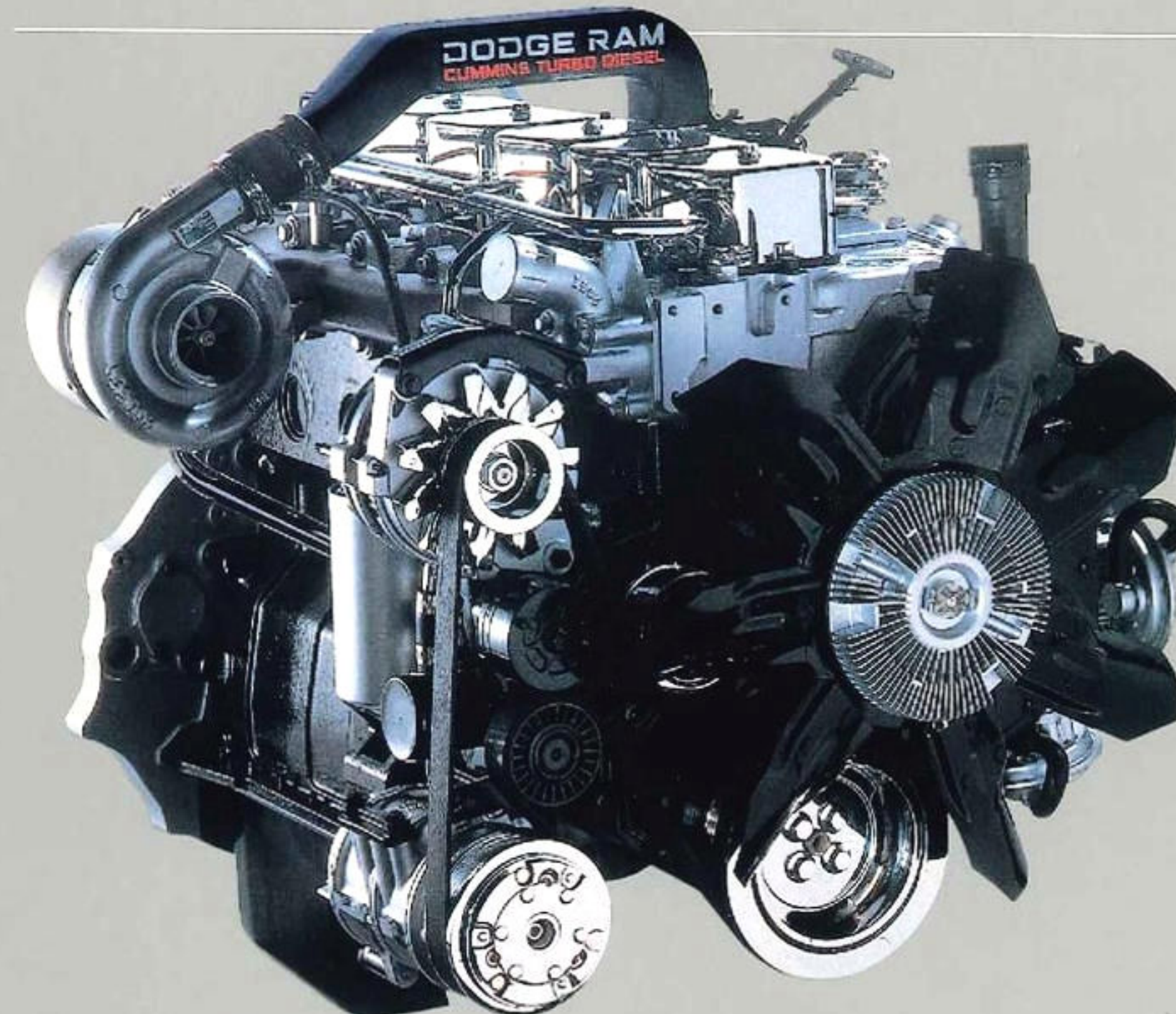
All Ram pickups feature a revised instrument cluster with an improved-accuracy electric speedometer and easier-to-read graphic gauges. A voltmeter, which replaces the ammeter gauge, tells the condition of the battery as well as the power output of the alternator.



Job-rated suspension.

The independent front suspension system of every two-wheel drive Dodge truck is specially designed and job-rated to handle the work load for which the vehicle is intended.

All Caravan C/V, Ram Vans and Wagons and two-wheel drive pickups have an independent front end suspension system built around coil springs and gas-charged shock absorbers. It can be adjusted on car front-end alignment equipment.



Cummins Turbo Diesels.

Exclusive with Dodge, the field-proven Cummins Turbo Diesel 5.9-liter engine offers state-of-the-art design, outstanding fuel economy, durability and ease of maintenance. Its compact six-cylinder design features turbocharged direct-fuel injection for ease of starting, increased horsepower and durability. And because of its simplicity, no special diesel engine service tools are needed. It delivers 160 horsepower at 2,500 rpm and 400 pound-feet of torque at 1,700 rpm.

Holset Turbocharger.

The Cummins Turbo Diesel features an efficient turbocharger designed by the Holset Engineering Company. As an integral part of the engine, the turbocharger helps make the Cummins superior in acceleration, fuel economy and towing power to any other engine in its class. What's more, the turbocharger virtually eliminates power loss at high altitudes.



Dodge Cummins Turbo Diesel models include:

- Holset turbocharger
- 4,000-pound capacity front axle (4,500-pound capacity on W250)
- 7,500-lb. capacity rear axle
- 1,915-pound capacity front springs (2,250 pounds on W250/350)
- Rear-wheel antilock brake system
- 120-amp alternator
- 1,025-amp maintenance-free battery
- 30-gallon fuel tank
- Heavy-duty starter
- Heavy-duty air cleaner
- Maximum engine cooling
- Auxiliary transmission oil-to-air cooler (with automatic transmission)
- Fuel and air heaters
- Warning lights for water in fuel, low fuel, low vacuum
- Engine block heater
- Sound Insulation Package
- Transfer case skid plate on W250/W350
- Underhood reel-type light

Superior performance.

In seven out of seven separate acceleration tests* performed at sea level, at 5,000 feet, and in a six percent grade at high altitude, a Dodge D250 Cummins Turbo Diesel outperformed a Ford F250 Diesel and a Chevrolet C3500 Diesel by a substantial margin. In these tests of comparable models, sanctioned by the United States Automobile Club, all trucks pulled trailers and had a gross combination weight of 11,000 pounds.

| Miles per hour Sea Level: | (Time in seconds) | | |
|---|-------------------|-------------------|--------------|
| | DODGE Time | CHEVROLET Time | FORD Time |
| 0-50 | 16.18 | 22.58 | 18.50 |
| 10-50 | 13.69 | 20.06 | 16.49 |
| 30-50 | 8.91 | 13.00 | 10.81 |
| Altitude (5,000 ft): | | | |
| | DODGE Time | CHEVROLET Time | FORD Time |
| 0-50 | 19.42 | 29.47 | 24.54 |
| 10-50 | 16.43 | 28.10 | 20.38 |
| 30-50 | 11.24 | 19.57 | 14.11 |
| High Altitude 6% Grade (5,000-10,000 ft): | | | |
| | DODGE Time | CHEVROLET Time | FORD Time |
| ¼ Mile | 27.69 | 37.46 | 32.83 |

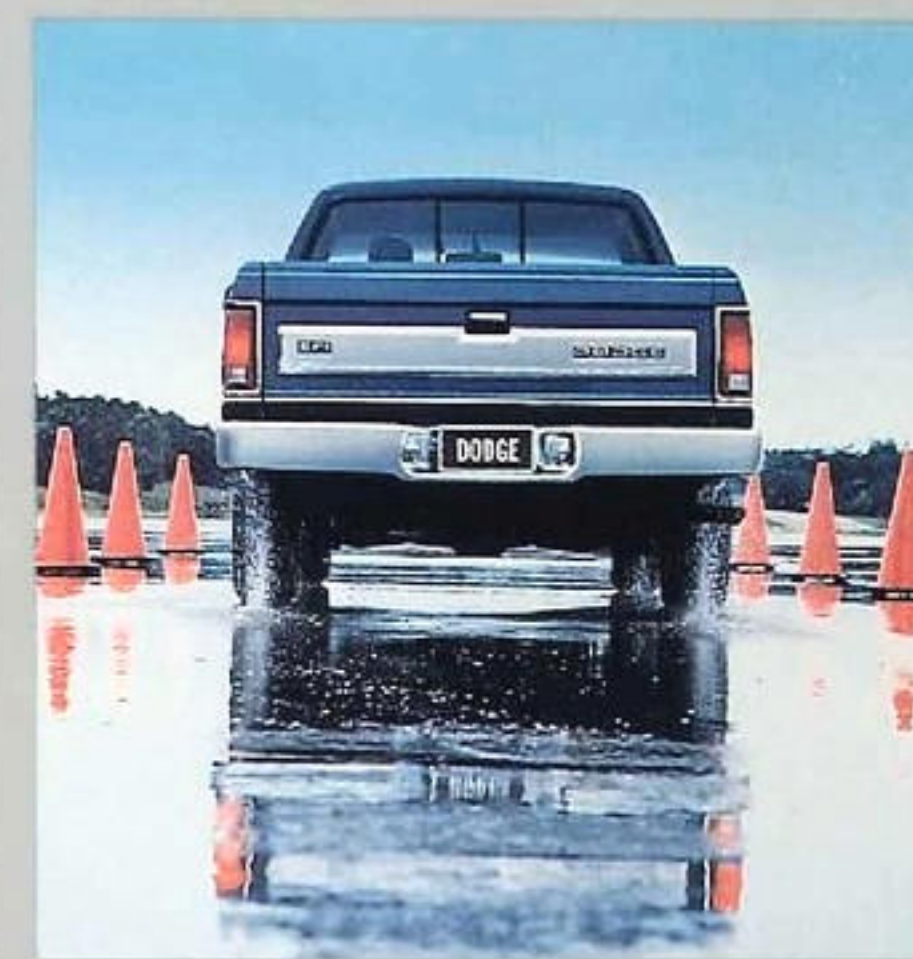
*Competitive claims based on 1988 data.

Transmissions.

An optional four-speed automatic transmission is available in selected applications on 1990 Ram Pickups, Vans and Wagons. The transmission includes an electronically controlled lockup torque converter (except on diesel applications), which improves highway fuel economy and reduces engine noise. Acceleration and pulling power are increased over three-speed automatics through the use of a higher numerical axle ratio.

Rear-wheel antilock brakes.

All 1990 domestic rear wheel drive Dodge trucks feature a standard rear-wheel antilock brake system. This computer-controlled unit helps maintain directional stability by preventing rear-wheel brakes from locking up under heavy braking on dry pavement or when traction is reduced.



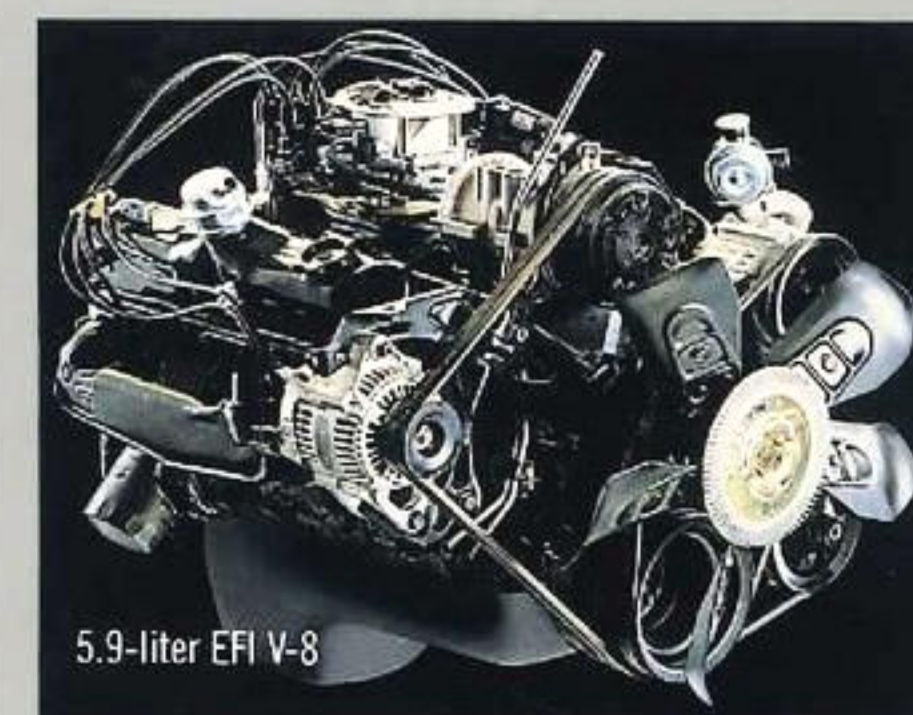
Single-board engine computers.

Engine control computers take another step forward in simplification and greater reliability thanks to the introduction of the Single-Board Engine Control (SBE). The SBE is mounted in the engine compartment and permits the reduction of external wiring connections. It features a microprocessor that can receive more input signals and control more functions than ever before.

EFI gasoline engines.

Every gasoline engine in a Dodge truck features electronic fuel injection. Heading the list of Dodge EFI engines is the all-new 3.3-liter V-6 engine, available on the extended wheelbase Caravan C/V. Available only with the Ultradrive electronic four-speed automatic transaxle, it has an extremely broad torque curve and offers better acceleration than the V-6 engine it replaces.

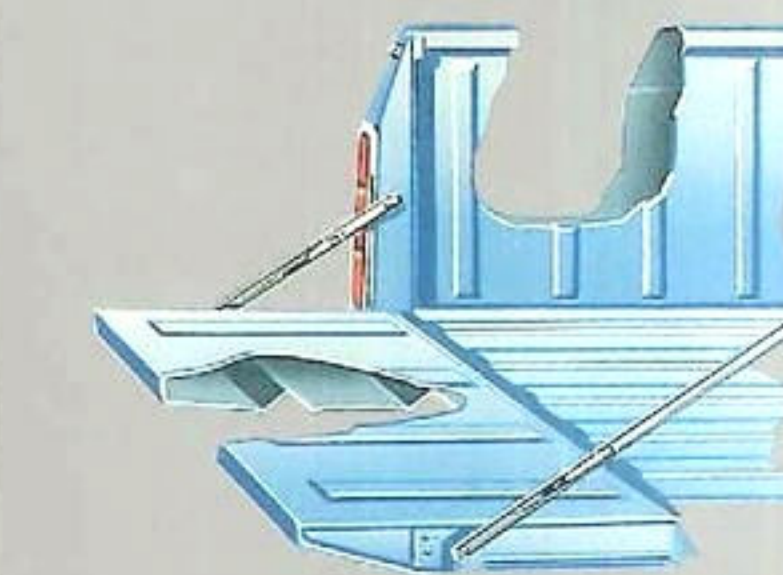
Dodge 3.9-liter V-6, and 5.2-liter and 5.9-liter V-8's feature a new valve system seal design for 1990. These single-lip, positive-type seals are Viton®, and each seal incorporates a spring to help ensure that it maintains its shape and function. The 5.9-liter V-8 also has a new, more effective crankshaft rear seal that provides more effective oil control than previous models.



Corrosion protection.

Dodge has pioneered the extensive use of galvanized steel because of its superior rust-resistant properties. In addition, all domestic trucks receive a multiple-spray cleaning and phosphating treatment prior to priming and painting. Next, Uniprime® primer coat, which ensures the uniform coating of primer, is added to all areas of the body. This is followed by an antichip protective urethane coating on lower bodysides. The final Clear Coat paint is then applied. When it comes to rust and corrosion prevention, nobody does it better than Dodge.

Uniprime® is a trademark of PPG Industries.



Double-wall construction.

Dodge's double-wall box construction on pickups provides added strength and helps prevent cargo dents from marring the exterior finish. The easy-off tailgate can be operated with one hand and is easily removed.

Warranty protection.

Engineering excellence and the toughness of Dodge trucks are reflected in our unprecedented 7/70 Protection Plan.* We know the surest way to attain customer satisfaction is simply to provide innovative, high-quality products backed by superior warranty and service. That's confidence. That's protection.

*See back cover for details.

Left

This dual rear-wheel, four-wheel drive W350 is powered by the available Cummins Turbo Diesel and has a 135-inch wheelbase. The W350 is also available in a single rear-wheel model with a 131-inch wheelbase. GVWs range from 8,700 to 11,000 pounds. The unit shown is fitted with a three-cubic-yard dump body with a six-ton capacity direct-lift hoist and power takeoff.

Top right

This Cummins optionally powered D350 features a "fifth wheel" conversion for trailer towing. With a power plant that produces 400 pound-feet of torque at 1,700 rpm, the Dodge Cummins combination delivers an excellent towing vehicle to meet the demands of work and leisure-time activities.

Bottom right

The Dodge Cummins-powered D250 is available for many conversions including this side-box unit for tradesmen. The unit shown has boxes that are 8 feet long, 1½ feet deep, and 15 inches high. Double-panel doors fold down to form work tables. The conversion includes a type "A" overhead ladder rack. D250 pickups with a 131-inch wheelbase and Cummins Turbo Diesel engine have a payload capacity of up to 3,640 pounds.

Some of the equipment shown or described in this catalog is available at extra cost.

About this catalog: Since the time of printing, some of the information you'll find in this catalog may have been updated. Ask your dealer for details.



ENGINEERING.

Today's Dodge trucks are world-class products born of the finest computer-aided design and manufacturing techniques available. Each truck is subjected to extensive testing and quality control processes in its manufacture, using the very latest in electronic, optical, and laser-checking devices.

Thus, you can be sure the Dodge truck you buy will stand up to the tough day-to-day pounding of commercial usage, and that it will last.

New for the '90s.

Those of you who need more cab room on the job will be glad to hear that Dodge now offers two new additions to its 1990 truck lineup—the Dodge Dakota and full-size Ram Club Cab models.

The Dakota Club Cab model is available on two-wheel drive pickups with a standard 6½-foot work box. It features an optional 60/40 fold-up rear seat with lockable storage space beneath.

The full-size Club Cab models include the D150 with a 6½-foot or 8-foot box ... D250 with an 8-foot box and W150 or W250 models with the 8-foot box. It has two standard fold-up jump seats and offers more than 34 cubic feet of additional storage space.

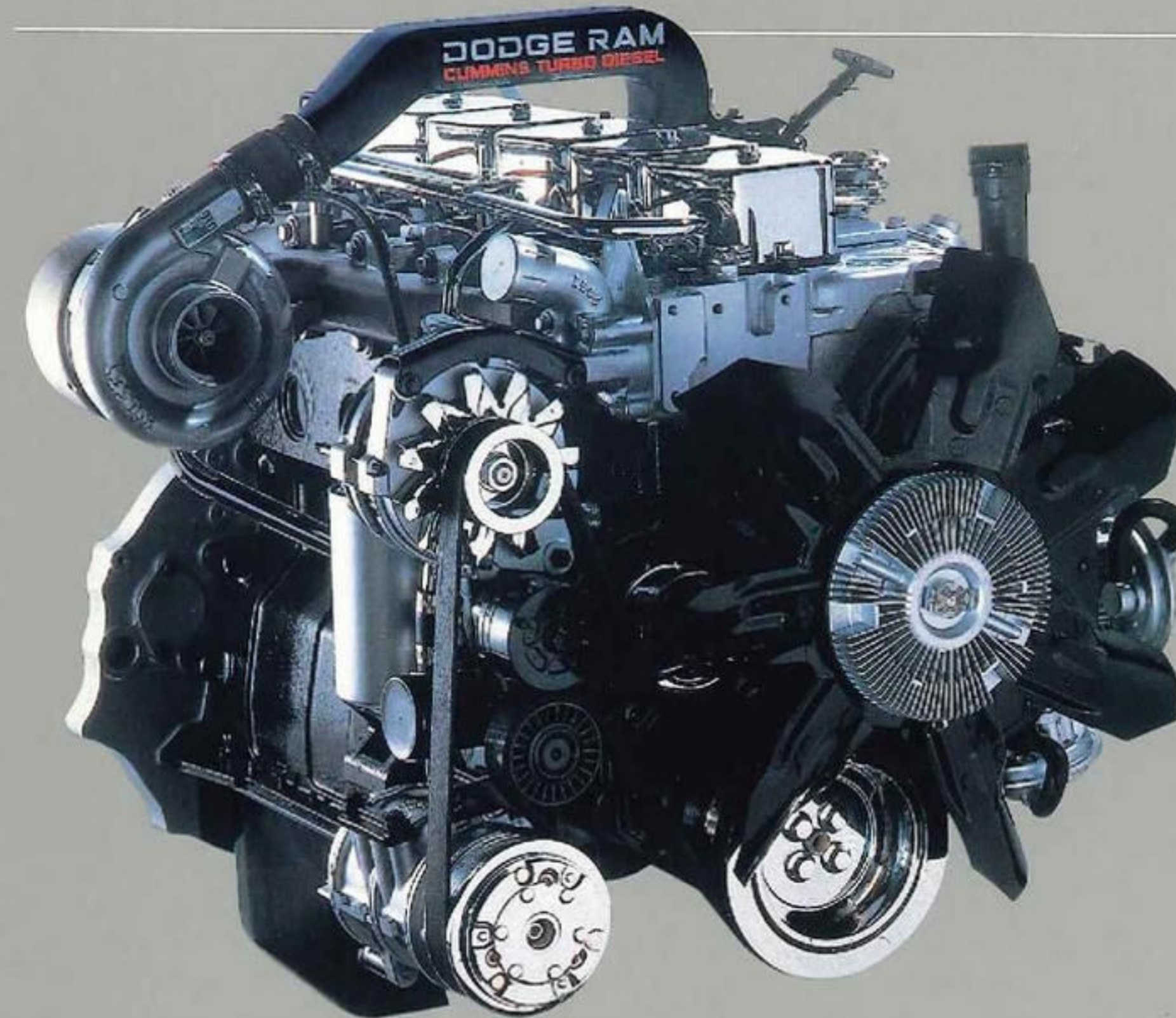
All Ram pickups feature a revised instrument cluster with an improved-accuracy electric speedometer and easier-to-read graphic gauges. A voltmeter, which replaces the ammeter gauge, tells the condition of the battery as well as the power output of the alternator.



Job-rated suspension.

The independent front suspension system of every two-wheel drive Dodge truck is specially designed and job-rated to handle the work load for which the vehicle is intended.

All Caravan C/V, Ram Vans and Wagons and two-wheel drive pickups have an independent front end suspension system built around coil springs and gas-charged shock absorbers. It can be adjusted on car front-end alignment equipment.

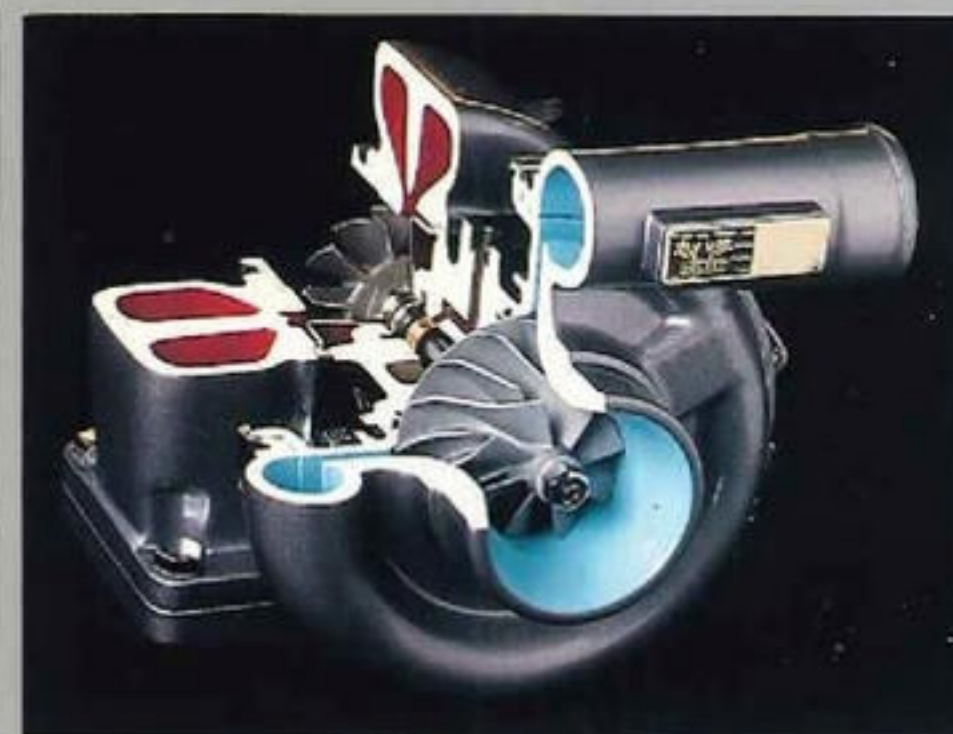


Cummins Turbo Diesels.

Exclusive with Dodge, the field-proven Cummins Turbo Diesel 5.9-liter engine offers state-of-the-art design, outstanding fuel economy, durability and ease of maintenance. Its compact six-cylinder design features turbocharged direct-fuel injection for ease of starting, increased horsepower and durability. And because of its simplicity, no special diesel engine service tools are needed. It delivers 160 horsepower at 2,500 rpm and 400 pound-feet of torque at 1,700 rpm.

Holset Turbocharger.

The Cummins Turbo Diesel features an efficient turbocharger designed by the Holset Engineering Company. As an integral part of the engine, the turbocharger helps make the Cummins superior in acceleration, fuel economy and towing power to any other engine in its class. What's more, the turbocharger virtually eliminates power loss at high altitudes.



Dodge Cummins Turbo Diesel models include:

- Holset turbocharger
- 4,000-pound capacity front axle (4,500-pound capacity on W250)
- 7,500-lb. capacity rear axle
- 1,915-pound capacity front springs (2,250 pounds on W250/350)
- Rear-wheel antilock brake system
- 120-amp alternator
- 1,025-amp maintenance-free battery
- 30-gallon fuel tank
- Heavy-duty starter
- Heavy-duty air cleaner
- Maximum engine cooling
- Auxiliary transmission oil-to-air cooler (with automatic transmission)
- Fuel and air heaters
- Warning lights for water in fuel, low fuel, low vacuum
- Engine block heater
- Sound Insulation Package
- Transfer case skid plate on W250/W350
- Underhood reel-type light

Superior performance.

In seven out of seven separate acceleration tests* performed at sea level, at 5,000 feet, and in a six percent grade at high altitude, a Dodge D250 Cummins Turbo Diesel outperformed a Ford F250 Diesel and a Chevrolet C3500 Diesel by a substantial margin. In these tests of comparable models, sanctioned by the United States Automobile Club, all trucks pulled trailers and had a gross combination weight of 11,000 pounds.

| | (Time in seconds) | | |
|---|-------------------|-------------------|--------------|
| Miles per hour Sea Level: | DODGE Time | CHEVROLET Time | FORD Time |
| 0-50 | 16.18 | 22.58 | 18.50 |
| 10-50 | 13.69 | 20.06 | 16.49 |
| 30-50 | 8.91 | 13.00 | 10.81 |
| Altitude (5,000 ft): | DODGE Time | CHEVROLET Time | FORD Time |
| 0-50 | 19.42 | 29.47 | 24.54 |
| 10-50 | 16.43 | 28.10 | 20.38 |
| 30-50 | 11.24 | 19.57 | 14.11 |
| High Altitude 6% Grade (5,000-10,000 ft): | DODGE Time | CHEVROLET Time | FORD Time |
| ¼ Mile | 27.69 | 37.46 | 32.83 |

*Competitive claims based on 1988 data.

Transmissions.

An optional four-speed automatic transmission is available in selected applications on 1990 Ram Pickups, Vans and Wagons. The transmission includes an electronically controlled lockup torque converter (except on diesel applications), which improves highway fuel economy and reduces engine noise. Acceleration and pulling power are increased over three-speed automatics through the use of a higher numerical axle ratio.

Rear-wheel antilock brakes.

All 1990 domestic rear wheel drive Dodge trucks feature a standard rear-wheel antilock brake system. This computer-controlled unit helps maintain directional stability by preventing rear-wheel brakes from locking up under heavy braking on dry pavement or when traction is reduced.

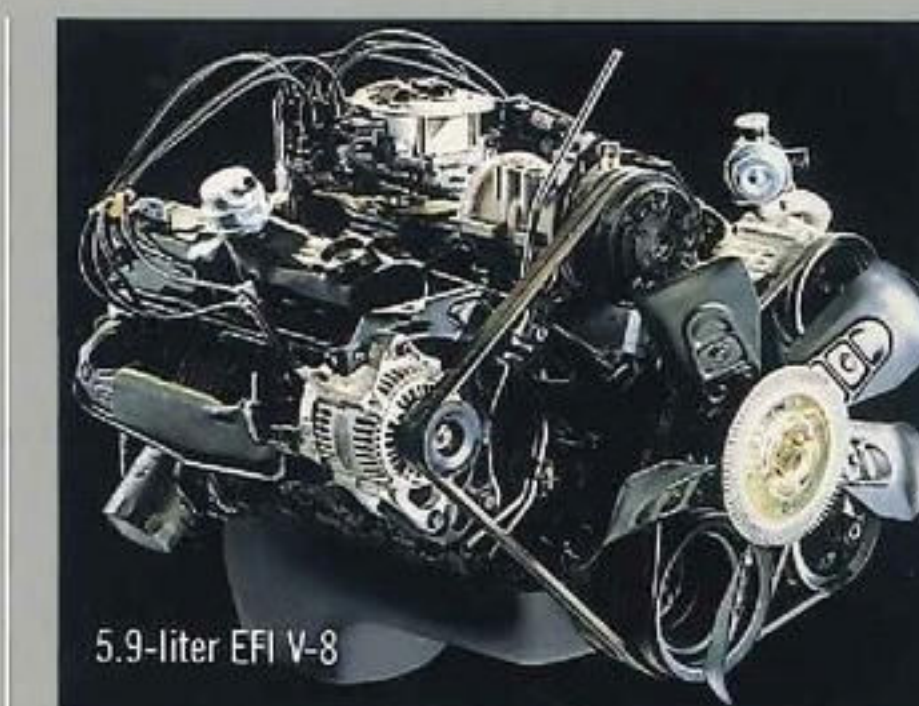
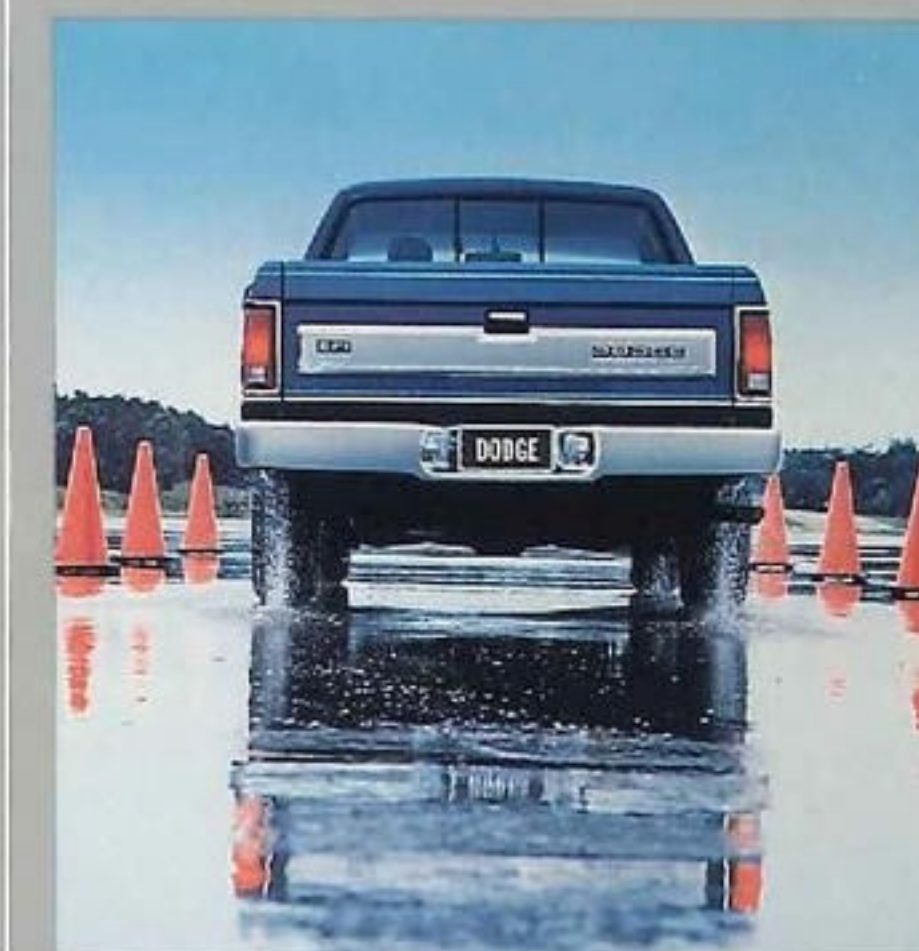
Single-board engine computers.

Engine control computers take another step forward in simplification and greater reliability thanks to the introduction of the Single-Board Engine Control (SBEC). The SBEC is mounted in the engine compartment and permits the reduction of external wiring connections. It features a microprocessor that can receive more input signals and control more functions than ever before.

EFI gasoline engines.

Every gasoline engine in a Dodge truck features electronic fuel injection. Heading the list of Dodge EFI engines is the all-new 3.3-liter V-6 engine, available on the extended wheelbase Caravan C/V. Available only with the Ultradrive electronic four-speed automatic transaxle, it has an extremely broad torque curve and offers better acceleration than the V-6 engine it replaces.

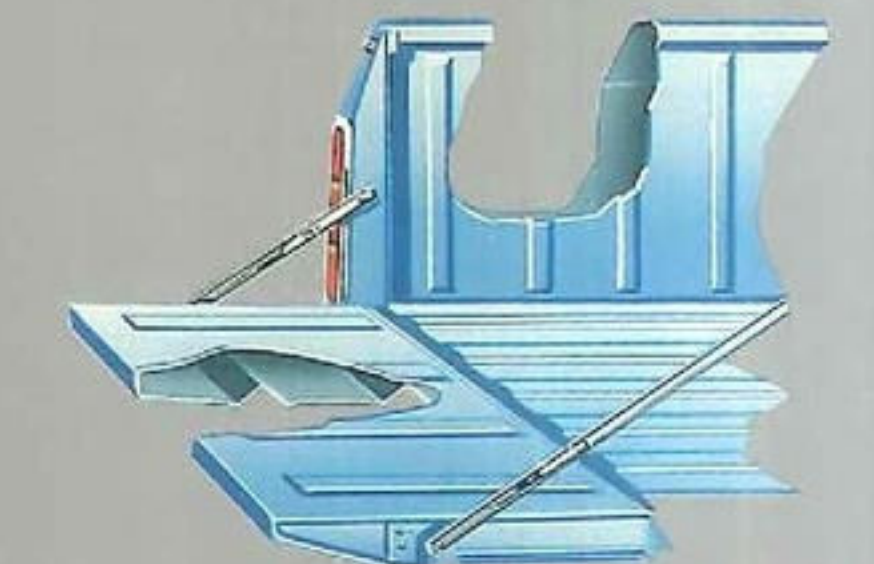
Dodge 3.9-liter V-6, and 5.2-liter and 5.9-liter V-8's feature a new valve system seal design for 1990. These single-lip, positive-type seals are Viton®, and each seal incorporates a spring to help ensure that it maintains its shape and function. The 5.9-liter V-8 also has a new, more effective crankshaft rear seal that provides more effective oil control than previous models.



Corrosion protection.

Dodge has pioneered the extensive use of galvanized steel because of its superior rust-resistant properties. In addition, all domestic trucks receive a multiple-spray cleaning and phosphating treatment prior to priming and painting. Next, Uniprime® primer coat, which ensures the uniform coating of primer, is added to all areas of the body. This is followed by an antichip protective urethane coating on lower bodysides. The final Clear Coat paint is then applied. When it comes to rust and corrosion prevention, nobody does it better than Dodge.

Uniprime® is a trademark of PPG Industries.



Double-wall construction.

Dodge's double-wall box construction on pickups provides added strength and helps prevent cargo dents from marring the exterior finish. The easy-off tailgate can be operated with one hand and is easily removed.

Warranty protection.

Engineering excellence and the toughness of Dodge trucks are reflected in our unprecedented 7/70 Protection Plan.* We know the surest way to attain customer satisfaction is simply to provide innovative, high-quality products backed by superior warranty and service. That's confidence. That's protection.

*See back cover for details.

Left

This dual rear-wheel, four-wheel drive W350 is powered by the available Cummins Turbo Diesel and has a 135-inch wheelbase. The W350 is also available in a single rear-wheel model with a 131-inch wheelbase. GVWs range from 8,700 to 11,000 pounds. The unit shown is fitted with a three-cubic-yard dump body with a six-ton capacity direct-lift hoist and power takeoff.

Top right

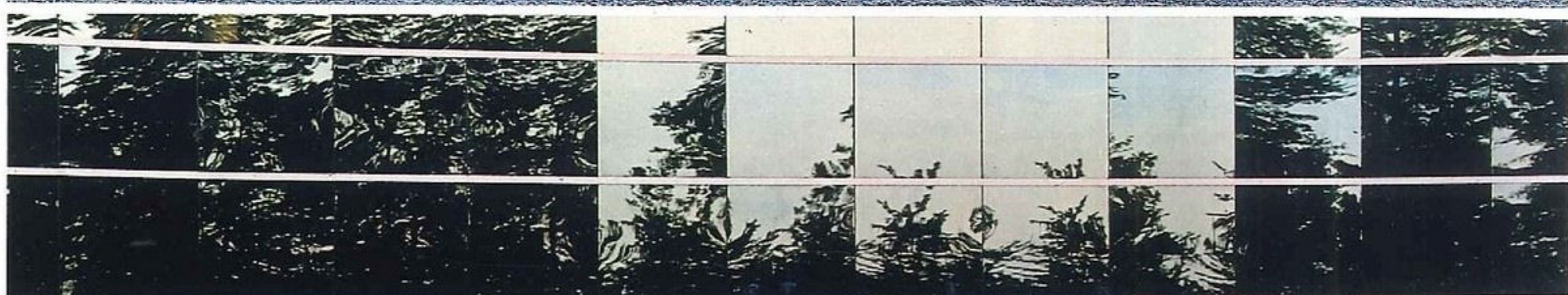
This Cummins optionally powered D350 features a "fifth wheel" conversion for trailer towing. With a power plant that produces 400 pound-feet of torque at 1,700 rpm, the Dodge Cummins combination delivers an excellent towing vehicle to meet the demands of work and leisure-time activities.

Bottom right

The Dodge Cummins-powered D250 is available for many conversions including this side-box unit for tradesmen. The unit shown has boxes that are 8 feet long, 1½ feet deep, and 15 inches high. Double-panel doors fold down to form work tables. The conversion includes a type "A" overhead ladder rack. D250 pickups with a 131-inch wheelbase and Cummins Turbo Diesel engine have a payload capacity of up to 3,640 pounds.

Some of the equipment shown or described in this catalog is available at extra cost.

About this catalog: Since the time of printing, some of the information you'll find in this catalog may have been updated. Ask your dealer for details.



CHASSIS CABS.



Top left
This Dodge 350 dual rear-wheel Chassis Cab has a 135-inch wheelbase, Cummins 5.9-liter Turbo Diesel engine, 1,025-ampere maintenance-free battery and 30-gallon fuel tank standard. The nine-foot-long service body is all steel, featuring three lockable storage compartments on each side.

Bottom left
This big three-passenger cab has dual rear wheels and a host of standard features such as antilock rear brakes. The spacious van body has a 12' x 8' x 6' x 9" interior with a durable side lining and laminated hardwood floor.



Top right
This dual rear-wheel D350 five-ton wrecker features the optional Advantage Pac III Package as well as the LE Decor Package. This unit has a winch and a fully hydraulic lift with extension capability. It has a 3,000-pound lift capacity and 7,500-pound towing capacity. There are three money-saving Advantage Pacs available on full-size pickups and chassis cab models. See your dealer for details.

Bottom right
This dual rear-wheel Chassis Cab stake has a 159-inch wheelbase and available 5.9-liter Cummins Turbo Diesel engine. It has a 12' x 4' x 8' platform with an all-steel understructure, side and end rails. Side, front and rear rack sections are 42 inches tall and are removable. ICC body clearance lights and reflectors are included in this conversion.



CHASSIS CABS.



Top left
Dakota has America's only mid-size Chassis Cab. It is strong, durable, and able to tote a hefty 2,800-pound payload. A powerful 3.9-liter V-6 engine is standard. Dakota also features power-assisted rack-and-pinion steering, independent front suspension, and the extensive use of galvanized steel to resist rust and corrosion. This Dakota service body features a utility service body made of galvanized steel with a treadplate steel floor. Three lockable storage compartments on each side with stainless steel paddle handles are included.

Bottom left
The Dodge 250 Chassis Cab, shown with optional Cummins Turbo Diesel, is available in a 131-inch wheelbase. Two-wheel drive models have GVWs up to 8,510 pounds and payloads up to 4,545 pounds. The 4x4 models have a GVW of 8,510 pounds and a payload of 4,205 pounds. The standard engine in both wheelbase sizes is the 5.9-liter EFI V-8. The standard transmission in the 2WD model is the four-speed automatic. The standard transmission in the 4WD model is a four-speed manual with Ram Trac front axle.

Bottom right
The Dodge 350 Chassis Cab, shown with optional Cummins Turbo Diesel, is available in three wheelbase sizes. Two-wheel drive models have GVWs up to 10,500 pounds and payloads up to 6,155 pounds. The 4x4 models have GVW ratings up to 11,000 pounds and payload ratings as high as 6,270 pounds. Its standard engine is the 5.9-liter EFI V-8 with four-speed manual transmission. Your dealer can also provide you with a wide range of comfort, convenience and appearance items to meet your needs.



| Chassis Cab Models Specifications | D250 Chassis Cab | D350 Chassis Cab | W250 Chassis Cab | W350 Chassis Cab | Dakota Chassis Cab |
|--|--|---|---|---|---|
| Wheelbase (in.) | 131 | 131 135 159 | 131 | 131 135 | 112 124 |
| Axle, Front Capacity (lb)-Std | 3,300 | 3,300 4,000 | 3,500 | 4,500 | 3,300 |
| Axle, Rear Capacity (lb)-Std | 5,500 | 6,200-131" wb 7,500-135" wb 159" wb | 5,500 | 6,200 7,500 | 3,650 |
| Brakes-Size (in.) Front Disc Rear Drum | 12.82 x 1.25 12 x 2.5 | 12.82 x 1.25 131" wb 12.82 x 1.19 135", 159" wb 12 x 2.5-131" wb 12 x 3.0-135" wb 159" wb | 12.82 x 1.19 12 x 2.5 | 12.88 x 1.54 12 x 2.5-131" wb 12 x 3.0-135" wb | 11.4 x .87 9 x 2.5 |
| Vacuum Booster | 9.5 dual diaphragm | 9.5 dual diaphragm | 9.5 dual diaphragm | 9.5 dual diaphragm | 10.7 single diaphragm |
| Electrical Alternator Battery (maintenance-free) | 12-volt, 75-amp 625-amp | 12-volt, 75-amp 625-amp | 12-volt, 75-amp 625-amp | 12-volt, 75-amp 625-amp | 12-volt, 75-amp 500-amp |
| Engine-Std | 5.9-liter (360 CID) V-8 EFI | 5.9-liter (360 CID) V-8 EFI | 5.9-liter (360 CID) V-8 EFI | 5.9-liter (360 CID) V-8 EFI | 3.9-liter (239 CID) V-6 EFI |
| Engine-Opt | 5.9-liter Cummins turbocharged diesel 6-cyl | 5.9-liter Cummins turbocharged diesel 6-cyl | 5.9-liter Cummins turbocharged diesel 6-cyl | 5.9-liter Cummins turbocharged diesel 6-cyl | — |
| Springs, Front Std Cap. @ Ground (lb) | 1,600 | 1,700-131" wb 1,650-135" wb 159" wb | 1,800 | 1,940 | Total capacity 2,500 |
| Springs, Rear Std Cap. @ Ground (lb) | 2,725 | 3,650 | 3,650 | 3,650 | Total capacity 3,000 |
| Steering | Power-assisted | Power-assisted | Power-assisted | Power-assisted | Power-assisted |
| Transfer Case | — | — | 2-spd NP241 | 2-spd NP205 | — |
| Transmission-Std Opt | 4-spd automatic overdrive 4-spd manual NP435 ¹ Getrag 5-spd manual OD ² 3-spd automatic ² | 4-spd manual NP435 ¹ 4-spd automatic overdrive ¹ Getrag 5-spd manual OD ² 3-spd automatic ² | 4-spd manual NP435 ¹ 4-spd automatic overdrive ¹ Getrag 5-spd manual OD ² 3-spd automatic ² | 4-spd manual NP435 ¹ 4-spd automatic overdrive ¹ Getrag 5-spd manual OD ² 3-spd automatic ² | 5-spd OD manual 4-spd automatic OD |
| Tires-Std (steel-belted radial) ³ | LT215/85R16D | LT235/85R16E 131" wb LT215/85R16C dual rear 135" wb, 159" wb | LT235/85R16E | LT235/85R16E 131" wb LT215/85R16C dual rear 135" wb | P205/75R15 |
| Wheels-Std (in.) ³ | 16.0 x 6.0 | 16.0 x 6.0 | 16.0 x 6.0 | 16.0 x 6.0 | 15.0 x 6.0 |

¹Not available with Cummins diesel engine. ²Available only with Cummins diesel engine.
³Five tires and wheels are standard on Dakota models. Four tires and wheels are standard on D250, D350, W250, and W350 131-inch wheelbase chassis cab models. Six tires and wheels are standard on D350 (135-inch wheelbase and 159-inch wheelbase) and on W350 (135-inch wheelbase) chassis cab models.

Chassis Cab: Two-Wheel Drive Dimensions

| Model | GVW Range (pounds) | Approx. Maximum Payload (pounds) ¹ | Wheelbase | Overall Length | BA | BBC | CA | AF |
|--------|--------------------|---|-----------|----------------|--------|---------|-------|--------|
| Dakota | 5,110-5,930 | 2,050-2,800 | 112" | 180.98" | 30.35" | 103.18" | 39.1" | 38.72" |
| Dakota | 5,160-5,980 | 2,050-2,800 | 124" | 199.52" | 30.35" | 103.18" | 51.1" | 45.22" |
| D250 | 7,400-8,510 | 3,605-4,545 | 131" | 206.67" | 33.42" | 108.42" | 56.0" | 42.25" |
| D350 | 8,700 | 4,700 | 131" | 206.67" | 33.42" | 108.42" | 56.0" | 42.25" |
| D350 | 10,100-10,500 | 5,770-6,155 | 135" | 216.67" | 33.42" | 108.42" | 60.0" | 48.25" |
| D350 | 10,100-10,500 | 5,620-5,995 | 159" | 240.67" | 33.42" | 108.42" | 84.0" | 48.25" |

Chassis Cab: Four-Wheel Drive Dimensions

| Model | GVW Range (pounds) | Approx. Maximum Payload (pounds) ¹ | Wheelbase | Overall Length | BA | BBC | CA | AF |
|-------|--------------------|---|-----------|----------------|--------|---------|-------|--------|
| W250 | 8,510 | 4,205 | 131" | 205.93" | 33.42" | 108.42" | 56.0" | 42.25" |
| W350 | 8,700 | 4,160 | 131" | 205.93" | 33.42" | 108.42" | 56.0" | 42.25" |
| W350 | 10,100-11,000 | 5,390-6,270 | 135" | 215.93" | 33.42" | 108.42" | 60.0" | 48.25" |

BA-Bumper to center line of front axle. BBC-Bumper to back of cab.
CA-Back of cab to center line of rear axle. AF-Center line of rear axle to rear end of frame.
¹Maximum payloads are based on models with minimum required load-carrying components. Payloads should be reduced by weight of occupants and any optional equipment.

Dakota Cab and Chassis standard features:
• 3.9-liter EFI engine • Rack-and-pinion power steering • Antilock rear-wheel brake system • Instrumentation—full set of gauges • All-vinyl bench seat • 22-gallon fuel tank • AM stereo*/FM stereo radio • Dual 6- by 9-inch mirrors • Tinted glass • Coolant overflow system
Full-Size Cab and Chassis standard features:
• 5.9-liter EFI engine • Power steering and power brakes • Antilock rear-wheel brake system • Instrumentation—full set of gauges • Frame adapter brackets • All-vinyl bench seat • Dual West Coast-type exterior mirrors • AM stereo*/FM stereo radio • Tinted glass • Coolant overflow system
*Some AM stereo broadcasting may not be compatible with this radio.

PICKUPS.



Top left
The all-new Dakota Club Cab, with optional seating for six, is available only on two-wheel drive models with the 6½-foot pickup box. It offers more in-cab cargo room than any of its competitors*; up to 20 cubic feet of cargo space behind the front seat. The Dakota SE shown here has been outfitted with steel ladder-carrying racks.

*Based on 1989 competitive data.

Bottom left
All full-size Dodge W150 and W250 four-wheel drive models offer the convenience of Ram Trac front-axle shifting as standard. This means you can shift from two- to four-wheel drive on the move at speeds of up to 55 mph. This W250 is equipped with a Snow Plow Prep Package. This package includes such items as front clearance and identification lights, heavy-duty front axle, heavy-duty springs, maximum engine cooling and more. Consult your Dodge Truck Dealer for a complete list of equipment and requirements.

Bottom right
This Dodge D150 is equipped with an electric/hydraulic rear tailgate lift with a 1,250-pound capacity and 60-inch by 36-inch platform with 5-inch ramp.

The 1990 D150 has the optional 5.9-liter EFI V-8 engine for heavy hauling or towing. It also features an antilock rear brake system for greater directional stability under heavy braking on dry pavement or when traction is reduced. Standard gas-charged shock absorbers provide a smoother ride under all load conditions.

Standard pickup features.

- EFI engine • Power steering and power brakes • Antilock rear-wheel brake system • 22-gallon fuel tank • Instrumentation—full set of gauges • All-vinyl bench seat • Coolant overflow system • AM stereo*/FM stereo radio • Tinted glass

*Some AM stereo broadcasting may not be compatible with this radio.



Dodge Pickups: Two-Wheel Drive Model Specifications

| | D150 | D150 Club Cab | D250 | D250 Club Cab | D350 |
|--|--|---------------------------|---|---------------------------|---|
| Wheelbase (in.) | 115 131 | 133 149 | 131 | 149 | 131 |
| Axle, Front Capacity (lb)-Std | 3,300 | 3,300 | 3,300 | 3,300 | 3,300 |
| Axle, Rear Capacity (lb)-Std | 3,600 | 3,600 | 5,500 | 5,500 | 6,200 |
| Brakes-Size (in.) | 11.75 x 1.25 | 11.75 x 1.25 | 12.82 x 1.25 | 12.82 x 1.25 | 12.82 x 1.25 |
| Front Disc | 11 x 2.5 | 11 x 2.5 | 12 x 2.5 | 11 x 2.5 | 12 x 2.5 |
| Rear Drum | 9.8 single | 9.8 single | 9.5 dual | 9.5 dual | 9.5 dual |
| Vacuum Booster | | | | | |
| Electrical | | | | | |
| Alternator | 12-volt, 75-amp | 12-volt, 75-amp | 12-volt, 75-amp | 12-volt, 75-amp | 12-volt, 75-amp |
| Battery (maintenance-free) | 500-amp | 500-amp | 500-amp | 500-amp | 625-amp |
| Engine-Std | 3.9-liter 239 CID V-6 EFI | 5.2-liter 318 CID V-8 EFI | 3.9-liter 239 CID V-6 EFI | 5.2-liter 318 CID V-8 EFI | 5.9-liter 360 CID V-8 EFI |
| Engine-Opt | 5.2-liter 318 CID V-8 EFI 5.9-liter 360 CID V-8 EFI | 5.9-liter 360 CID V-8 EFI | 5.2-liter 318 CID V-8 EFI 5.9-liter 360 CID V-8 EFI 5.9-liter Cummins diesel 6-cyl turbocharged | 5.9-liter 360 CID V-8 EFI | 5.9-liter Cummins turbocharged diesel 6-cyl |
| Springs, Front | | | | | |
| Std Cap. @ Ground (lb) | 1,400 | 1,600 | 1,500 | 1,700 | 1,700 |
| Springs, Rear | | | | | |
| Std Cap. @ Ground (lb) | 1,820 | 1,820 | 2,725 | 2,725 | 3,650 |
| Transmission-Std | 5-spd manual o.d. 4-spd manual | 4-spd manual NP435 | 4-spd manual NP435 ⁽¹⁾ | 4-spd manual NP435 | 4-spd manual NP435 ⁽¹⁾ |
| Opt | 4-spd manual NP435 ⁽²⁾ 3-spd automatic 4-spd automatic o.d. | 4-spd automatic o.d. | Getrag 5-spd manual o.d. ⁽²⁾ 3-spd automatic 4-spd automatic o.d. ⁽²⁾ | 4-spd automatic o.d. | Getrag 5-spd manual o.d. ⁽²⁾ 3-spd automatic 4-spd automatic o.d. ⁽²⁾ |
| Tires-Std (steel-belted radial) ⁽³⁾ | P215/75R15 | P235/75R15XL | L7215/85R16D | L7215/85R16D | L7235/85R16E |
| Wheels-Std (in.) ⁽²⁾ | 15 x 6.50 | 15 x 6.50 | 16.0 x 6.00 | 16.0 x 6.00 | 16.0 x 6.00 |

⁽¹⁾Not available with Cummins diesel engine. ⁽²⁾Available with Cummins diesel engine only. ⁽³⁾Five tires and wheels are standard on D150 and W150 pickup models. Four tires and wheels are standard on D250, D350, and W250, W350 pickup models.

Dodge Pickups: Two-Wheel Drive Dimensions

| Model | GVW Range (pounds) | Sweptline Payload Range (pounds) ⁽¹⁾ | Wheelbase | Overall Length | Pickup Box | | | | |
|-------|--------------------|---|-----------|----------------|------------|-------|--------|------------------|--------------------|
| | | | | | Length | Width | Height | Tailgate Opening | Width at Wheelbase |
| D150 | 5,500 | 1,880 | 115" | 190.78" | 76.9" | 70.0" | 19.12" | 65.0" | 51.0" |
| D150 | 5,500-6,000 | 1,770-2,250 | 131" | 210.78" | 96.9" | 70.0" | 19.12" | 65.0" | 51.0" |
| D150 | 6,000 | 1,880 | 133" | 208.24" | 76.9" | 70.0" | 19.12" | 65.0" | 51.0" |
| D150 | 6,000 | 1,735 | 149" | 228.27" | 96.9" | 70.0" | 19.12" | 65.0" | 51.0" |
| D250 | 7,400-8,510 | 3,365-4,305 | 131" | 210.78" | 96.9" | 70.0" | 19.12" | 65.0" | 51.0" |
| D250 | 7,400-8,510 | 3,020-4,070 | 149" | 228.27" | 96.9" | 70.0" | 19.12" | 65.0" | 51.0" |
| D350 | 8,700-10,100 | 4,410-5,480 | 131" | 210.78" | 96.9" | 70.0" | 19.12" | 65.0" | 51.0" |

⁽¹⁾Maximum payloads are based on models with minimum required load-carrying components. Payloads should be reduced by weight of occupants and any optional equipment.

Dodge Pickups: Four-Wheel Drive Model Specifications

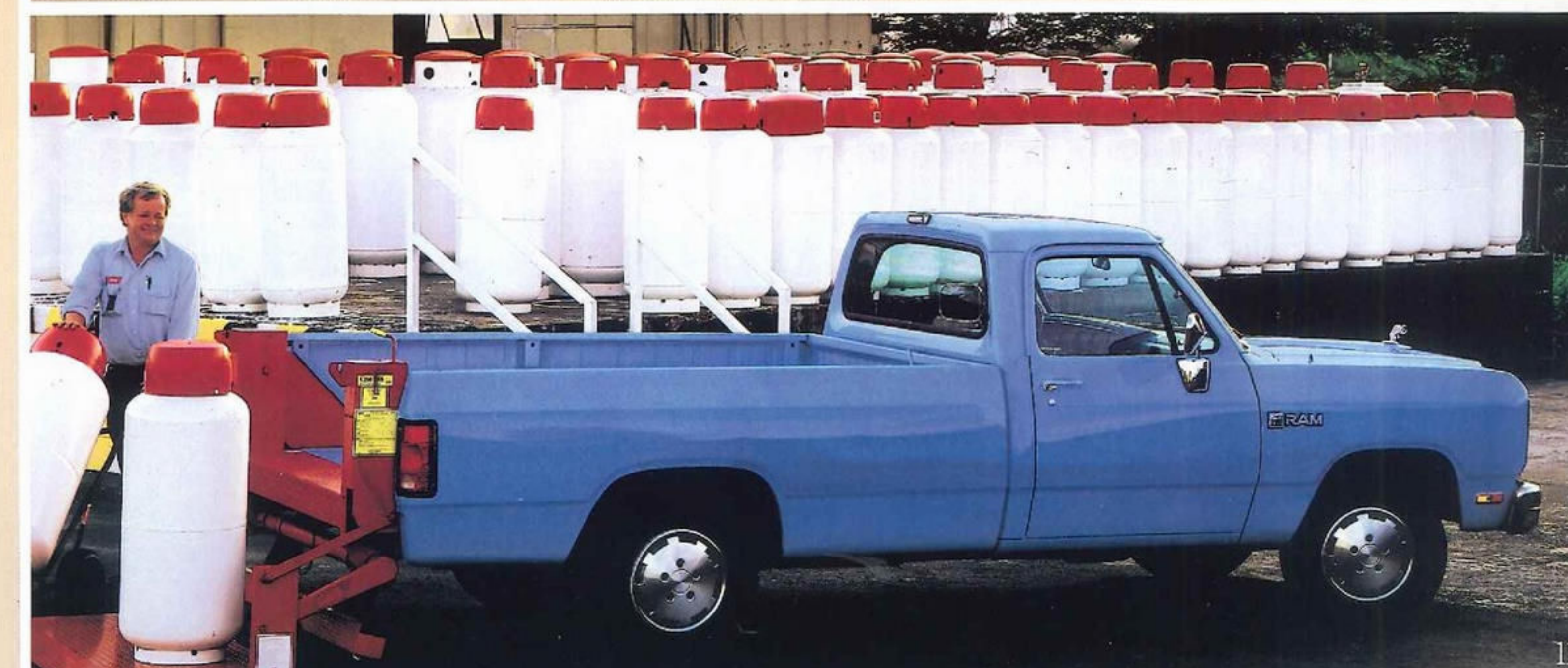
| | W150 Pickup | W150 Club Cab | W250 Pickup | W250 Club Cab | W350 Pickup |
|--|--|---------------------------|---|---------------------------|---|
| Wheelbase (in.) | 115 131 | 149 | 131 | 149 | 131 |
| Axle, Front Capacity (lb)-Std | 3,500 | 3,800 | 3,500 | 3,800 | 4,500 |
| Axle, Rear Capacity (lb)-Std | 3,600 | 3,600 | 5,500 | 5,500 | 6,200 |
| Brakes-Size (in.) | 11.63 x 1.25 | 11.63 x 1.25 | 12.82 x 1.19 | 12.82 x 1.19 | 12.88 x 1.54 |
| Front Disc | 11 x 2.5 | 11 x 2.5 | 12 x 2.5 | 12 x 2.5 | 12 x 2.5 |
| Rear Drum | 9.8 single | 9.8 single | 9.5 dual | 9.5 dual | 9.5 dual |
| Vacuum Booster | | | | | |
| Electrical | | | | | |
| Alternator | 12-volt, 75-amp | 12-volt, 75-amp | 12-volt, 75-amp | 12-volt, 75-amp | 12-volt, 75-amp |
| Battery (maintenance-free) | 500-amp | 500-amp | 500-amp | 500-amp | 625-amp |
| Engine-Std | 3.9-liter ⁽¹⁾ 239 CID V-6 EFI | 5.2-liter 318 CID V-8 EFI | 5.2-liter 318 CID V-8 EFI | 5.2-liter 318 CID V-8 EFI | 5.9-liter 360 CID V-8 EFI |
| Engine-Opt | 5.2-liter 318 CID V-8 EFI 5.9-liter 360 CID V-8 EFI | 5.9-liter 360 CID V-8 EFI | 5.9-liter 360 CID V-8 EFI 5.9-liter Cummins diesel 6-cyl turbocharged | 5.9-liter 360 CID V-8 EFI | 5.9-liter Cummins turbocharged diesel 6-cyl |
| Springs, Front | | | | | |
| Std Cap. @ Ground (lb) | 1,640 | 1,800 | 1,640 | 1,800 | 1,940 |
| Springs, Rear | | | | | |
| Std Cap. @ Ground (lb) | 1,820 | 1,820 | 3,650 | 3,650 | 3,650 |
| Transfer Case | 2-spd NP241 | 2-spd NP241 | 2-spd NP241 | 2-spd NP241 | 2-spd NP205 |
| Transmission-Std | 4-spd manual NP435 ⁽³⁾ | 4-spd manual NP435 | 4-spd manual NP435 ⁽¹⁾ | 4-spd manual NP435 | 4-spd manual NP435 ⁽¹⁾ |
| Opt | 4-spd automatic overdrive | 4-spd automatic overdrive | 4-spd automatic overdrive ⁽¹⁾ Getrag 5-spd manual o.d. ⁽²⁾ 3-spd automatic ⁽²⁾ | 4-spd automatic overdrive | 4-spd automatic overdrive ⁽¹⁾ Getrag 5-spd manual o.d. ⁽²⁾ 3-spd automatic ⁽²⁾ |
| Tires-Std (steel-belted radial) ⁽³⁾ | P235/75R15XL | P235/75R15XL | L7215/85R16D | L7215/85R16D | L7235/85R16E |
| Wheels-Std (in.) ⁽²⁾ | 15 x 6.50 | 15 x 6.50 | 16.0 x 6.00 | 16.0 x 6.00 | 16.0 x 6.00 |

⁽¹⁾Not available with Cummins diesel engine. ⁽²⁾Available with Cummins diesel engine only. ⁽³⁾Five tires and wheels are standard on D150 and W150 pickup models. Four tires and wheels are standard on D250, D350, and W250, W350 pickup models.

Dodge Pickups: Four-Wheel Drive Dimensions

| Model | GVW Range (pounds) | Sweptline Payload Range (pounds) ⁽¹⁾ | Wheelbase | Overall Length | Pickup Box | | | | |
|-------|--------------------|---|-----------|----------------|------------|-------|--------|------------------|--------------------|
| | | | | | Length | Width | Height | Tailgate Opening | Width at Wheelbase |
| W150 | 6,300 | 2,155 | 115" | 190.78" | 76.9" | 70.0" | 19.12" | 65.0" | 51.0" |
| W150 | 6,400 | 2,130 | 131" | 210.78" | 96.9" | 70.0" | 19.12" | 65.0" | 51.0" |
| W150 | 6,400 | 1,740 | 149" | 228.27" | 96.9" | 70.0" | 19.12" | 65.0" | 51.0" |
| W250 | 7,500-8,510 | 3,005-3,900 | 131" | 210.78" | 96.9" | 70.0" | 19.12" | 65.0" | 51.0" |
| W250 | 7,500-8,510 | 2,775-3,670 | 149" | 228.27" | 96.9" | 70.0" | 19.12" | 65.0" | 51.0" |
| W350 | 8,700 | 3,855 | 131" | 210.78" | 96.9" | 70.0" | 19.12" | 65.0" | 51.0" |

⁽¹⁾Maximum payloads are based on models with minimum required load-carrying components. Payloads should be reduced by weight of occupants and any optional equipment.



CARAVAN C/V.



Dodge offers two compact front-wheel drive vans for 1990.

The Caravan C/V offers a 112.0-inch wheelbase with 133 cubic feet of carrying capacity. It moves out efficiently with a standard 2.5-liter EFI engine and five-speed manual overdrive transmission.

The Extended Caravan C/V travels on a 119-inch wheelbase and offers an uninterrupted 160 cubic feet of cargo area. It's maximum payload is a very respectable 2,000 pounds. The Extended Caravan C/V comes with a standard 3.3-liter MPI V-6 engine and advanced four-speed electronic automatic transaxle.

Both Caravan C/V, shown below left, and the Extended Caravan C/V, shown left, offer the convenience of a sliding right side door and an easy-to-operate rear liftgate. Optional hinged dual rear cargo doors offer special convenience for commercial applications.

Caravan C/V standard features.

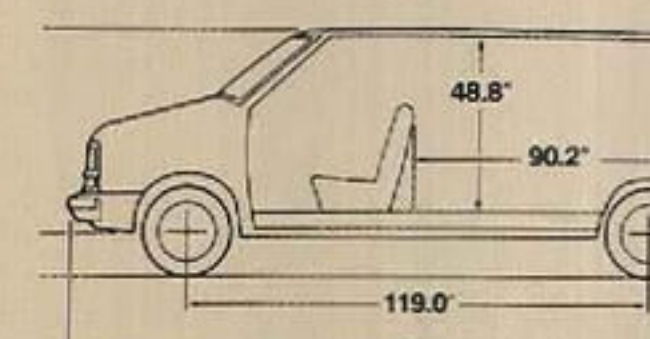
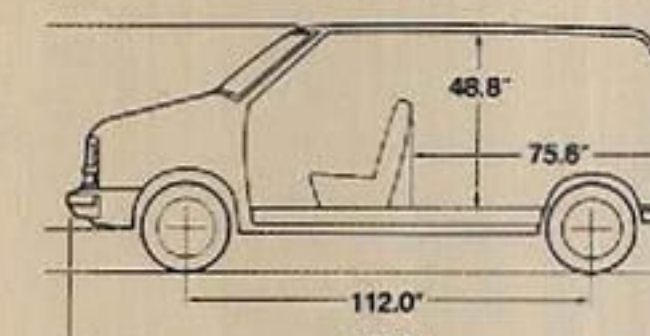
- 2.5-liter EFI engine • 3.3-liter MPI V-6 engine with Extended Caravan C/V • Power steering and power brakes • Maintenance-free battery • Load-sensing brake-proportioning valve • Stainless steel exhaust system • Coolant overflow system • Intermittent windshield wipers • Halogen headlights • AM stereo*/FM stereo radio • Tinted glass

*Some AM stereo broadcasting may not be compatible with this radio.

Caravan C/V Specifications

| MODEL | CARAVAN C/V | EXTENDED CARAVAN C/V |
|--|--|---|
| Wheelbase (in.) | 112 | 119 |
| Std/Max GVW (lb) | 4,070/4,910 | 5,090 |
| Payload—Std/Max (lb) ⁽¹⁾ | 1,200/2,000 | 2,000 |
| Axle, Front Capacity (lb)—Std | 2,430 | 2,500 |
| Axle, Rear Capacity (lb)—Std | 2,430 | 3,000 |
| Brakes—Size (in.) Front Disc Rear Drum Vacuum Booster | 10.24x.87 9x2.5 10.5 single diaphragm | 11.11x.87 9x2.5 11.0 single diaphragm |
| Electrical Alternator Battery (maintenance-free) | 90 500 | 90 500 |
| Engine—Std | 2.5-liter (153 CID) 4-cyl EFI | 3.3-liter (201 CID) V-6 MPI |
| Engine—Opt | 2.5-liter turbo (153 CID) 4-cyl SMPI 3.0-liter (181 CID) V-6 MPI ⁽³⁾ | |
| Springs, Front Std Cap. @ Ground (lb) | Computer-selected | Computer-selected |
| Springs, Rear Std Cap. @ Ground (lb) | Computer-selected | Computer-selected |
| Steering | Power-assisted | Power-assisted |
| Transmission—Std | 5-spd manual overdrive | 4-spd automatic overdrive |
| Opt | 3-spd automatic 4-spd automatic overdrive | |
| Tires—(steel-belted radial) ⁽²⁾ | P195/75R14 | LT195/75R15 |
| Wheels—Std (in.) ⁽²⁾ | 14x5.50 | 15x6 |

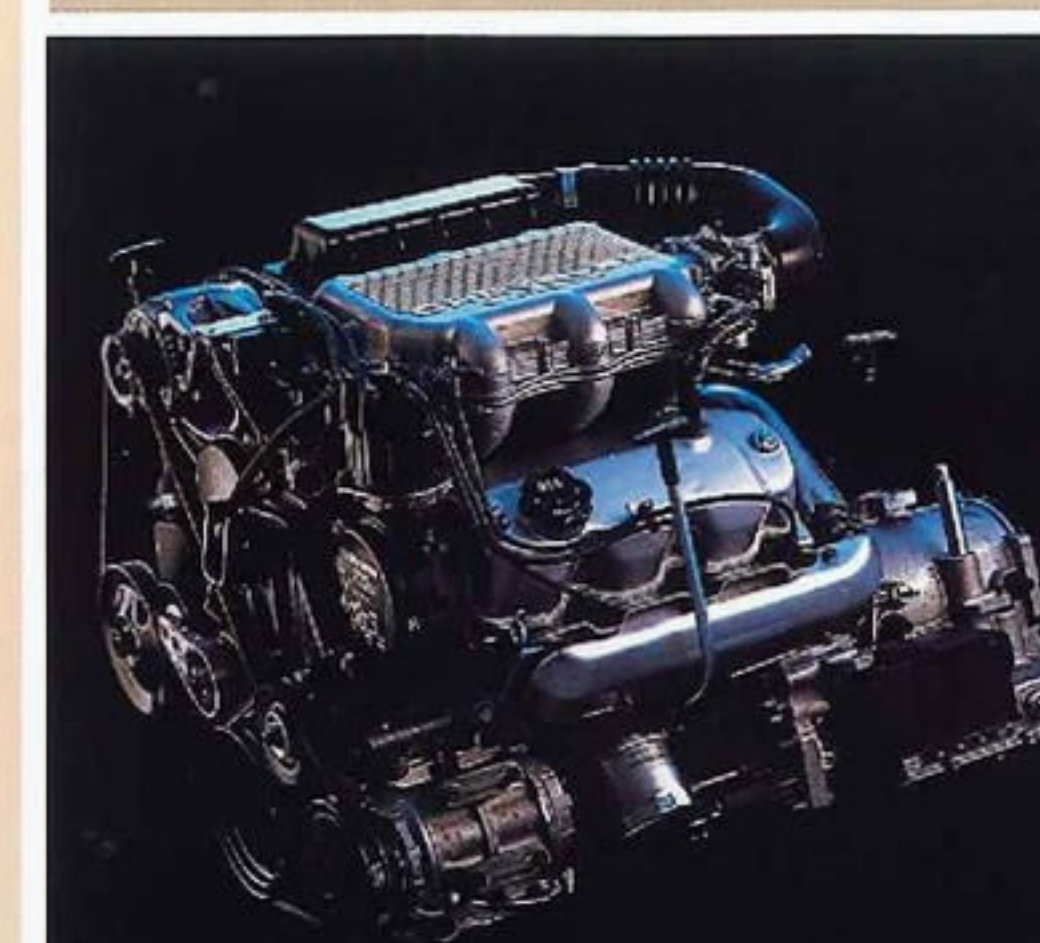
| Dimensions | CARAVAN C/V | EXTENDED CARAVAN C/V |
|--|-------------|----------------------|
| Wheelbase | 112.0" | 119.0" |
| Overall Length | 175.9" | 190.5" |
| Overall Width | 72.2" | 72.2" |
| Overall Height | 64.4" | 64.7" |
| Length—Cargo compartment to seatback | 75.6" | 90.2" |
| Length—Cargo compartment to floor | 81.8" | 96.4" |
| Length—Cargo compartment between wheelhousings | 49.2" | 49.2" |
| Maximum Interior Height | 48.8" | 48.8" |
| Maximum Interior Width | 69.6" | 69.6" |
| Cargo Volume | 133 cu ft | 160 cu ft |



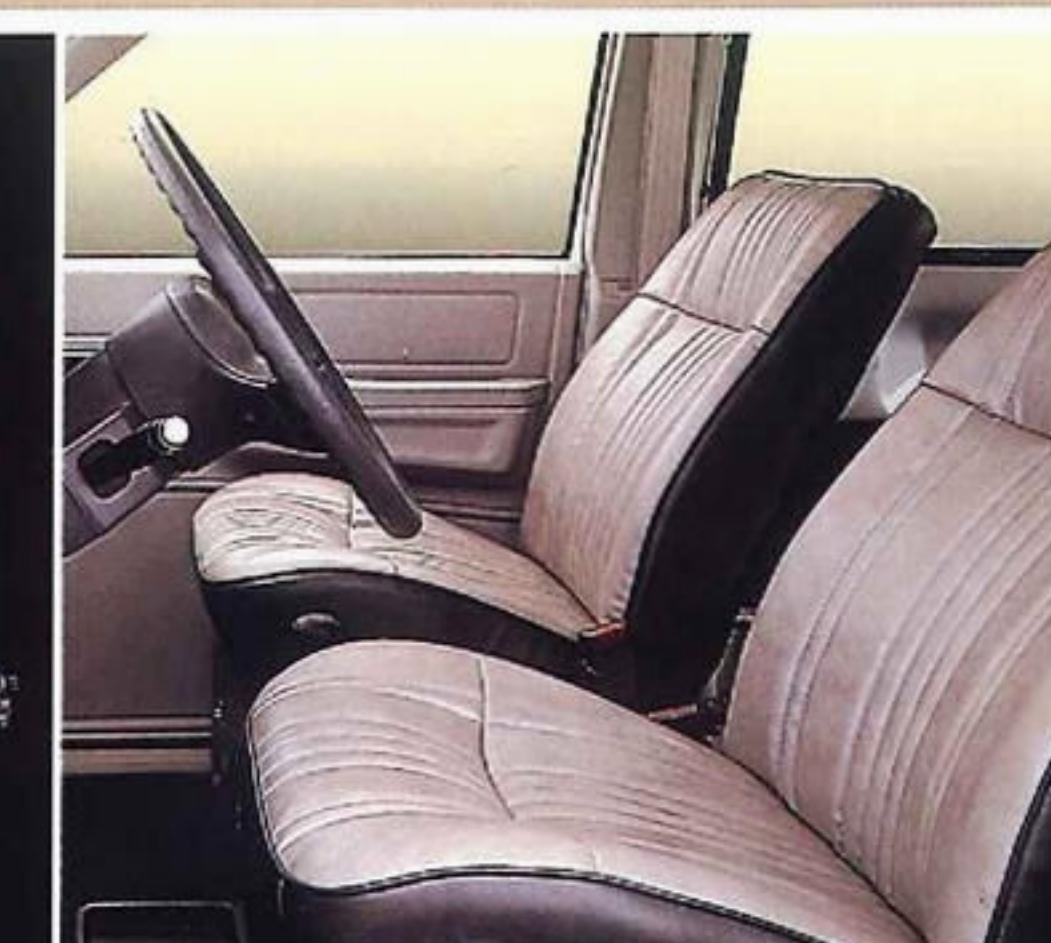
⁽¹⁾Maximum payload is based on models with minimum required load-carrying components. Payloads should be reduced by weight of occupants and any optional equipment.

⁽²⁾Four tires and wheels and compact spare are standard on Caravan C/V. Five tires and wheels are standard on Extended Caravan C/V models.

⁽³⁾Built by Mitsubishi Motors Corporation.



Optional 3.0-liter EFI V-6 engine



Optional Dual Rear Doors

RAM VANS.



Dodge Ram Vans are ideal for commercial use because they are very big in payload, performance and choice of models. Payloads range from 1,295 pounds in the short wheelbase B150 models up to 4,425 pounds in the B350 Maxivan. Cargo capacities range from 206.6 cubic feet to 304.5 cubic feet in America's roomiest* van—the Dodge Maxivan.

*With passenger seat removed. Based on SAE standard HSJ 1100a.

This conversion unit, shown left, rides on a 127.6-inch wheelbase, and features a raised roof with special exterior and interior equipment. All Ram Vans offer independent front suspension systems for steering and handling ease. Power steering and power brakes are also standard.

This B350 Maxivan ambulance conversion features a smooth ride on a 127.6-inch wheelbase with gas-charged heavy-duty front and rear shock absorbers. The 5.2-liter V-8 is standard, with the 5.9-liter EFI V-8 available as an option.

The B350 school bus conversion, shown at left, features steel outer body and reinforced window frames, rear corners, and side walls. It offers 16-passenger seating, three-point rear door lock, door ajar warning buzzer, eight exterior warning lights and monitor, driver-operated door control, enclosed front step and light, and much more.

The B350 Maxivan shown at right, comes standard with a 5.2-liter EFI V-8 engine, four-speed automatic transmission, and 22-gallon fuel tank. Wide-opening dual side doors are standard, but may also be equipped with an optional sliding side door, which is easy to operate in cramped quarters. All Ram Van engines offer electronic fuel injection for quick starting, responsiveness and fuel economy.

Dodge Van Specifications

| Model | B150 Van | | B250 Van | B250 Van & Maxivan | B350 Van & Maxivan | | | |
|-------------------------------|--|----------------|--|--------------------------------|-------------------------------------|--------------------------------|----------------------|-------------------|
| Wheelbase (in.) | 109.6/127.6 | | 109.6/127.6 | 127.6/127.6 Maxi | 127.6/127.6 Maxi | | | 127.6 Maxi |
| GVW (lb) | 5,000 | 5,300 | 6,010 | 6,400 | 7,500 | 8,510 | 8,510 ⁽²⁾ | 9,000 |
| Payload (lb) | 1,295 1,170 | 1,585 1,465 | 2,320 2,195 | 2,555 2,415 | 3,285 3,145 | 4,200 4,080 | 4,165 4,030 | 4,425 |
| Axle Capacity (lb) | | | | | | | | |
| Front | 3,300 | | | | 3,600 | 4,000 3,600 Maxi | 3,600 | 4,000 |
| Rear | 3,850 | | | | 5,500 | 5,500 | 5,500 | 6,200 |
| Brakes (in.) | | | | | | | | |
| Front Disc | 11.75x1.25 | | | | 12.82x1.25 | | 12.82x1.25 | 12.82x1.19 |
| Rear Drum | 11x2.5 | | | | 12x2.5 | | 12x3 | 12x3 |
| Booster | 10.5 single | | | | 11.5 single | | 9.0 dual | 9.0 dual |
| Engine—Std | 3.9-liter (239 CID) V-6 EFI | | 3.9-liter (239 CID) V-6 EFI | | 5.2-liter (318 CID) V-8 EFI | 5.9-liter (360 CID) V-8 EFI | | |
| Engine—Opt | 5.2-liter (318 CID) V-8 EFI | | 5.2-liter (318 CID) V-8 EFI 5.9-liter (360 CID) V-8 EFI | | 5.9-liter (360 CID) V-8 EFI | | | |
| Spring Rating (lb) | Computer selected | | Computer selected | | Computer selected | Computer selected | Computer selected | Computer selected |
| Front | 1,375 | | 1,610 | | 2,360 | 2,770 | 2,670 | 3,100 |
| Rear—Std | 1,610 h.d. | | 1,810 h.d. | | 2,770 h.d. | — | — | — |
| Opt | 1,610 h.d. | | 1,980 h.d. | | — | — | — | — |
| Shock Absorber Diameter (in.) | | | | | | | | |
| Front—Std | 1.0 | | 1.0 | | 1.0 | 1.0 | 1 1/8 | 1 1/8 |
| Opt | 1 1/8 | | 1 1/8 ⁽¹⁾ | | 1 1/8 | 1 1/8 ⁽³⁾ | 1.0 | 1 1/8 |
| Rear—Std | 1.0 | | 1.0 | | 1.0 | 1.0 | 1.0 | 1 1/8 |
| Opt | 1 1/8 | | 1 1/8 ⁽¹⁾ | | 1 1/8 | 1 1/8 ⁽³⁾ | — | — |
| Steering—Std | Power | | | | | | | |
| Transmission Std | 5-spd manual overdrive with 109.6" wb | | | | 4-spd automatic overdrive | | | |
| Opt | 3-spd automatic with 127.6" wb | | | | | | | |
| | 3-spd automatic with 109.6" wb | | | | | | | |
| | 4-spd automatic overdrive ⁽⁴⁾ | | | | | | | |
| Tire Size | P195/75R15 | P205/75R15 | P225/75R15 | P235/75R15 XL | LT225/75R16D LT225/75R16E (Maxi) | LT225/75R16E | | LT245/75R16E |
| Wheel Rim Size (in.) | 15x6.50 | | | 15x6.50 15x6.50 h.d. (Maxi) | 16x6.0 | | | 16x6.5 |

⁽¹⁾Standard on B250 Maxivan. ⁽²⁾With School Bus Package only. ⁽³⁾Standard on B350 regular van. ⁽⁴⁾Not available on B150 Van. NOTE: Maximum payloads are based on models with minimum required load-carrying components. Payloads should be reduced by the weight of occupants and any optional equipment.

Dimensions

| | 109.6" wb | 127.6" wb | 127.6" wb Maxi |
|--|-----------|-----------|----------------|
| Height (max.) | 79.6" | 80.9" | 80.6" |
| Width (max.) | 79.8" | 79.8" | 79.8" |
| Length (max.) | 178.9" | 196.9" | 222.9" |
| Effective head room: driver | 36.1" | 36.1" | 36.1" |
| Floor-to-roof height | 53.2" | 53.2" | 53.2" |
| Maximum inside width | 72.2" | 72.2" | 72.2" |
| Front seat to rear door | 92.9" | 110.9" | 136.9" |
| Engine cover to rear door | 120.1" | 138.1" | 164.1" |
| Width between wheelhouses | 50.0" | 50.0" | 50.0" |
| Rear and side-hinged doors | | | |
| —opening height | 47.2" | 47.2" | 47.2" |
| —opening width | 49.3" | 49.3" | 49.3" |
| Side sliding door | | | |
| —opening height | 47.2" | 47.2" | 47.2" |
| —opening width | 39.8" | 39.8" | 39.8" |
| Van cargo area capacity (cu ft) ⁽¹⁾ | 206.6 | 246.7 | 304.5 |

⁽¹⁾Cubic capacity calculated by SAE standard HSJ/1100a (without passenger seat).

Dodge Ram Van standard features.

- EFI engine • Power steering and brakes • Electronic ignition • 22-gallon fuel tank • Maintenance-free battery • Stabilizer bar • All-vinyl, high-back driver and passenger bucket seats • Bumpers—front and rear, argent finish • Tinted glass • AM stereo*/FM stereo radio

*Some AM stereo broadcasting may not be compatible with this radio.



RAM WAGONS.



1990 Dodge Ram Wagons offer a wide variety of seating arrangements: five-, eight-, twelve-, and fifteen-passenger seating. And all three passenger rear bench seats offer a quick-release feature so that they can be removed easily to provide ample flat cargo space when needed.

Because comfort and convenience are important, Dodge Ram Wagons offer independent front suspension, stabilizer bar, computer-selected springs, and power steering for a smooth ride and excellent handling.

Want power? Dodge Ram Wagon delivers it with a 3.9-liter EFI V-6, standard on B150 models, with a 5.2-liter EFI V-8 optional. The big 5.9-liter EFI V-8 is also available on the B250 and B350 models, and standard on B350 Maxiwagon models. A smooth five-speed overdrive manual transmission is standard on 109.6-inch B150 models. The three-speed automatic transmission is standard on 127.6-inch wheelbase B150 models and all B250 models.

Dodge wagons can be equipped to carry up to 15 passengers for commercial or van pooling use. All wagons, including the B350 Maxiwagon shown, at top left are covered by the industry-leading 7/70 Limited Warranty.*

*See back cover for details.

Available with optional seating for up to eight passengers. Like all Dodge wagons, it is available with new money-saving Advantage Pacs. Shown at center left Navy Blue/Platinum Silver.

Available with optional fifteen-passenger seating, which makes it ideal for use as a hotel/airport shuttle. Also has ample room for storage of bags and luggage. Shown at bottom left.

Dodge Ram Wagon Specifications

| | B150 Wagon | | | B250 Wagon and Maxiwagon | | B350 Wagon and Maxiwagon | |
|-------------------------------|--|-------|-------|--|----------------------|--|-------|
| Wheelbase (in.) | 109.6 | 127.6 | 109.6 | 127.6 | 127.6 | 127.6 | 127.6 |
| GVW (lb)-Std/Opt | 5,300 | 5,500 | 6,010 | 6,010 | 6,400 ⁽¹⁾ | 7,500 | 8,510 |
| Payload (lb) | 1,280 | 1,210 | 1,940 | 1,820 | 2,170 | 2,885 | 3,825 |
| | | 1,130 | | | 1,845 | 2,610 | 3,600 |
| Axle Capacity (lb) | | | | | | | |
| Front | 3,300 | | | 3,300 | | 3,600 | |
| Rear | 3,850 | | | 3,850 | | 5,500 | |
| Brakes (in.) | | | | | | | |
| Front Disc | 11.75 x 1.25 | | | 11.75 x 1.25 | | 12.82 x 1.25 | |
| Rear Drum | 11 x 2.5 | | | 11 x 2.5 | | 12 x 2.5 | |
| Booster | Vacuum 10.5 single diaphragm | | | Vacuum 10.5 single diaphragm | | Vacuum 11.5 single diaphragm | |
| Engine-Std | 3.9-liter (239 CID) V-6 EFI | | | 3.9-liter (239 CID) V-6 EFI | | 5.2-liter (318 CID) V-8 EFI | |
| Engine-Opt | 5.2-liter (318 CID) V-8 EFI | | | 5.2-liter (318 CID) V-8 EFI | | 5.9-liter (360 CID) V-8 EFI ⁽¹⁾ | |
| | | | | | | 5.9-liter (360 CID) V-8 EFI | |
| Shock Absorbers | | | | | | | |
| Front and Rear (diameter-in.) | 1.0 | | | 1.0 | | 1.0 | |
| Std | 1 1/16 | | | 1 1/16 ⁽¹⁾ | | 1 1/16 | |
| Opt | | | | | | | |
| Spring Ratings (lb) | | | | | | | |
| Front | Computer selected | | | Computer selected | | Computer selected | |
| Rear-Std | 1,610 | | | 1,810 | | 2,360 | |
| | 1,610 | | | 1,980 | | 2,770 | |
| Opt | 1,810 | | | 1,980 | | 2,770 | |
| | 1,810 | | | | | 2,770 | |
| | 1,980 | | | | | Maxi | |
| Steering | Power | | | Power | | Power | |
| Transmission-Std | 5-speed manual overdrive (109.6" wb) | | | 3-speed automatic | | 4-speed automatic overdrive | |
| | 3-speed automatic (127.6" wb) | | | | | | |
| Opt | 3-speed automatic (109.6" wb) | | | 4-speed automatic overdrive | | | |
| | 4-speed automatic overdrive | | | | | | |
| Tire Size | P205/75R15 steel-belted radial-Std with 5,300-lb GVW | | | P225/75R15 steel-belted radial-Std with 6,010-lb GVW | | LT225/75R16D steel-belted radial-Std with 127.6" wb with 7,500-lb GVW | |
| | P225/75R15 steel-belted radial-Std with 5,500-lb GVW | | | P235/75R15XL steel-belted radial-Std with 6,400-lb GVW | | LT225/75R16E steel-belted radial-Std on Maxi and 127.6" wb with 8,500-lb GVW | |
| | P235/75R15XL steel-belted radial-Std with 6,010-lb GVW | | | | | | |
| Wheel Rim Size (in.) | 15 x 6.50 | | | 15 x 6.50 | | 16 x 6.0 | |
| | | | | 15 x 6.50 heavy-duty (Maxi) | | | |

⁽¹⁾Standard on Maxiwagon; optional on regular wagon. NOTE: Maximum payloads are based on models with minimum required load-carrying components. Payloads should be reduced by weight of occupants and any optional equipment.

| Dimensions | 109.6" wb | 127.6" wb | 127.6" wb Maxi |
|---------------------------------------|-----------|-----------|----------------|
| Height (max.) | 79.6" | 80.9" | 80.6" |
| Width (max.) | 79.8" | 79.8" | 79.8" |
| Length (max.) | 178.9" | 196.9" | 222.9" |
| Effective head room: driver | 36.1" | 36.1" | 36.1" |
| Floor-to-roof height | 53.2" | 53.2" | 53.2" |
| Maximum inside width | 72.2" | 72.2" | 72.2" |
| Front seat to rear door | 92.9" | 110.9" | 136.9" |
| Engine cover to rear door | 120.1" | 138.1" | 164.1" |
| Standard wagon rear seat to rear door | 57.1" | 75.1" | 101.1" |
| Width between wheelhouses | 50.0" | 50.0" | 50.0" |
| Rear and side-hinged doors | | | |
| -opening height | 47.2" | 47.2" | 47.2" |
| -opening width | 49.3" | 49.3" | 49.3" |
| Side sliding door | | | |
| -opening height | 47.2" | 47.2" | 47.2" |
| -opening width | 39.8" | 39.8" | 39.8" |



Standard five-passenger seating: all models



Optional eight-passenger seating: B150 109.6-inch wheelbase model with optional 6,010-Pound GVW Package, and all B250 and B350 models.



Optional twelve-passenger seating: B350 model; rear door(s) with optional vented glass required at extra cost.



Optional fifteen-passenger seating: B350 127.6-inch wheelbase Maxiwagon; rear door(s) with optional vented glass and 8,510-Pound GVW Package required at extra cost.

Dodge Ram Wagon standard features.

- EFI engine [size dependent on model selected]
- Power steering and brakes
- Electronic ignition
- Five-passenger seating standard
- Instrumentation—full set of gauges
- Stabilizer bar
- Maintenance-free battery
- Halogen headlights
- AM stereo*/FM stereo radio
- Tinted glass

*Some AM stereo broadcasting may not be compatible with this radio.



Chrysler Motors Genuine Parts.

MOPAR parts are engineered by Chrysler Motors for use in your new Dodge truck. When replacement is necessary, be sure to specify MOPAR parts—used by professional mechanics all over the world.

Dodge and MOPAR are registered trademarks. Caravan C/V, Dakota, Ram Pickup, Ram Van and Ram Wagon are trademarks of Chrysler Motors Corporation.



Chrysler Credit Financing.

Chrysler Credit offers a variety of finance programs that will help make your new Dodge truck even more affordable. These special finance and lease programs are designed to meet the needs of today's automotive buyer. They include Gold Key Lease, America's Choice Payment Plan, College Graduate Plans, Retail Financing, and more. Ask your salesperson for details.

Optional Service Contract Coverage.

Chrysler Service Contracts provide you with additional peace-of-mind protection for your new vehicle. Chrysler Motors offers a variety of plans to meet your needs. Plan coverage begins after your vehicle's basic warranty expires. A deductible applies. Allowances for car rental and towing are also included.

7/70 Power Train Limited Warranty.

Upon expiration of the basic 12-month or 12,000-mile limited warranty, coverage is extended on power train components to seven years or 70,000 miles. In vehicles equipped with a diesel engine, the engine (parts and components) is covered for seven years or 100,000 miles; the remainder of the power train is covered for seven years or 70,000 miles. A deductible applies. See your dealer for a copy of the warranty.

7/100 Anticorrosion Limited Warranty.

Your dealer will repair or replace at no charge outer body sheet metal panels found to have developed perforation (rust-through) in normal use up to seven years or 100,000 miles. See your dealer for a copy of the limited warranty.

Chrysler Purchase Assistance Program for the Physically Challenged.

Cash reimbursements of up to \$500 are available for qualified adaptive driving devices on 1990 Chrysler Motors cars and trucks. For further information, contact your dealer or the PHYSICALLY CHALLENGED RESOURCE CENTER at 1-800-255-9877.

Specifications, descriptions, and illustrative materials contained herein are as accurate as known at the time this publication was approved for printing. Chrysler Motors reserves the right to discontinue models or options at any time or change specifications and materials, equipment, and design without notice and without incurring obligation. All options and accessories illustrated or referred to as optional or available in this publication are at extra cost. Some options are required in combination with other options. For the price of the model with the equipment you desire, or verification of specifications contained here, see your Dodge Truck dealer.



Black Clear Coat
Dakota, Ram Pickup, Caravan C/V



Black
Wagon, Van



Bright White Clear Coat
Dakota, Ram Pickup, Caravan C/V



Bright White
Wagon, Van



Dark Tundra Metallic Clear Coat
Dakota, Ram Pickup



Dark Tundra Metallic
Wagon, Van



Dark Suede Metallic Clear Coat
Caravan C/V



Light Spectrum Blue Metallic Clear Coat
Dakota, Ram Pickup



Light Blue Metallic
Wagon, Van



Twilight Blue Pearl Coat*
Caravan C/V



Colorado Red Clear Coat
Dakota, Ram Pickup



Crimson Red
Wagon, Van



Claret Red Pearl Coat*
Caravan C/V



Sand Metallic Clear Coat
Dakota, Ram Pickup



Light Tundra
Wagon, Van



Medium Suede Metallic Clear Coat
Caravan C/V



Dover Gray Metallic Clear Coat
Dakota, Ram Pickup



Dark Quartz Gray Metallic
Wagon, Van



Charcoal Pearl Coat
Caravan C/V



Dark Spectrum Blue Metallic Clear Coat
Dakota, Ram Pickup



Navy Blue Metallic
Wagon, Van



Black Cherry Pearl Coat
Caravan C/V



Sterling Silver Metallic Clear Coat
Dakota, Ram Pickup



Platinum Silver Metallic
Wagon, Van



Radiant Silver Metallic Clear Coat
Caravan C/V



Daytona Blue Metallic Clear Coat
Dakota, Ram Pickup except Club Cab



Ice Blue Metallic Clear Coat
Caravan C/V



Medium Tundra Metallic
Wagon, Van



Dark Forest Green Metallic Clear Coat
Ram Club Cab Pickup only

*Extra Cost

NOTE: Due to printing limitations, the colors shown will vary slightly from actual hues. See your Dodge dealer for accurate color chips.



**THE TOUGH NEW
SPIRIT OF DODGE**
THE PERFORMANCE DIVISION OF CHRYSLER MOTORS