

1996 Dodge Stealth

320 HORSEPOWER
DOHC 24-VALVE V6 • ABS
TWIN TURBO • 18" WHEELS
DOUBLE-WISHBONE
REAR SUSPENSION
DUAL AIR BAGS* • REAR SPOILER
AIR-TO-AIR INTERCOOLER
6-SPEED GETRAG TRANSAXLE
PERFORMANCE TIRES
ULTIMATE SOUND SYSTEM
ALL-WHEEL DRIVE
REMOTE KEYLESS ENTRY
AERODYNAMIC DESIGN
LEATHER-WRAPPED
STEERING WHEEL
GAS-CHARGED FRONT
AND REAR SHOCKS



The New Dodge



Attitude with a capital "A."

Attitude. It's the mark of a maverick. The sign of an independent thinker who has enough confidence to walk the edge without ever looking down.

Attitude is also a mark of courage and imagination. Courage to change the rules when the old rules no longer make sense. Imagination to think ahead. To develop new rules that make so much sense they quickly become the standard.

This kind of attitude and the innovation it inspires are an integral part of every car and truck Dodge puts on the road.

A case in point is Stealth R/T Turbo ...

Some people drive cars merely to get from one place to another. Others drive just to be seen. Then there are those who drive Dodge Stealth R/T Turbo.

When you drive a Stealth R/T Turbo, you're piloting what *Motor Trend* once called "... one of the best all-weather performance cars in the world." The key word is "performance."

But Stealth is not just a road rocket. It's surprisingly comfortable, quiet, stable and precise ... so predictable that the input you give it will be returned precisely in the performance it delivers.

In other words, if you think Stealth R/T Turbo is just another trendy sports coupe, we suggest you spend a few minutes behind the wheel. Leave the faint-hearted standing by the side of the road.



Some of the equipment shown or described throughout this catalog is available at extra cost.

* Always wear your seat belts.

Stealth is planned and designed by Dodge ... a division of Chrysler Corporation. Engineered and manufactured by Mitsubishi Motors Corporation.

About this catalog. Since the time of printing, some of the information you'll find in this catalog may have been updated. Ask your dealer for details.



■ Let's start with the power train.

Stealth R/T Turbo is driven by a 320-horsepower, 3.0-liter dual overhead cam 24-valve MPI twin air-to-air intercooled, twin turbo V6 engine. Standard features include full-time all-wheel drive, a six-speed manual high-performance overdrive Getrag transaxle, four oversized, power-assisted disc brakes with four P245/45ZR17 Goodyear GSC unidirectional speed-rated tires and cast aluminum Ultimate wheels. Standard interior items include fully adjustable, contoured sport seats, power windows and door locks, and a keyless entry security system. You'll probably make use of that last feature only once. Because after you get into the car for the first time, you're never going to want to get out.

Stealth R/T Turbo shown here in Firestorm Red with optional 245/40ZR18 performance radials with 18-inch chrome wheels.

Your supercar is waiting.

Since Dodge Stealth was introduced in 1991, many wonderful things have been said and written about this remarkable car. *Car and Driver* compared its appearance to the Lamborghini Countach; *Motor Trend* called it "an affordable Ferrari 348;" *Road & Track* said it had earned a place on "the elite registry of the world's supercars."



▲ **Standard features on Stealth** include driver and front passenger air bags,* leather-wrapped tilt steering wheel, six-speaker Ultimate Sound stereo system with AM/FM cassette player and graphic equalizer, air conditioning, and fog lights. Choose the standard five-speed manual or available four-speed automatic transaxle. Enjoy the driving control of performance McPherson strut front and double-wishbone rear suspensions, as well as standard four-wheel ventilated disc brakes. In the words of one reviewer, the base Stealth "has as much get-up-and-go as most people want ... or need."

► **The 100-watt Ultimate Sound system** (right, top) is standard and a trunk-mounted six-disc CD changer (right, below) is optional on all Stealth models for 1996.

*Always wear your seat belts.

Lamborghini? Ferrari? Supercars? Pretty fast company for a car that *Business Week* once said "redefin(ed) the reasonably priced sports car."

You say you haven't test-driven a Stealth yet? And you were waiting for ... what?



Color and Fabric Selection Center



Firestorm Red

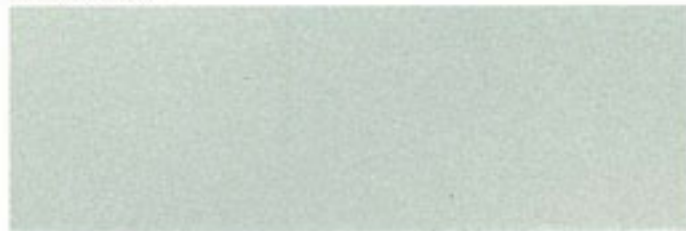


Emerald Green Pearl



Symphonic Silver Metallic

Brilliant White^{††}



White Pearl^{††}



Orchid Pearl



Olive Pearl

^{††}Only available on Stealth.
^{†††}Not available on Stealth.



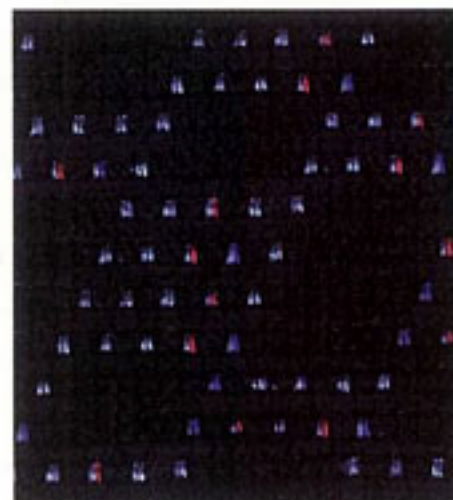
▲ **Stealth R/T Turbo.** On the open road, there are few automobiles that can keep up with it, and fewer still that are as much fun to own and drive.



▲ **Stealth R/T.** Think of all the attention you'll get when you drive this amazing automobile. Stealth's cockpit is the perfect place from which to enjoy it.



▲ **Stealth.** Designed, engineered and built to outperform its competition on every level.



Standard on Stealth, Stealth R/T and Stealth R/T Turbo — Aspire/Conuex cloth. Available in Black and Black/Tan.



Optional on Stealth, Stealth R/T and Stealth R/T Turbo — premium leather-with-vinyl trim. Available in Black and Black/Tan.

We're thinking ahead.

Futuristic design. Innovative engineering. Quality production. All are embodied in the 1996 Dodge Stealth. And in the Dodge vehicles of tomorrow currently under development at our research facilities and on our test tracks.

But to you, the vast resources of the Dodge Division are centered in just one place: the dealership. Here, too, our goal is to ensure continuous improvement.

CustomerOne™ In our ongoing commitment to customer satisfaction, we've instituted Customer One, a comprehensive process designed to improve the way we do business. As a result, we hope to exceed your expectations — whether you're "just looking," ready to buy, or in for service.

That's the new Dodge culture: new ways to research, design, test and produce world-class cars and trucks — and continuous improvement in the ways we treat the people who buy them.

For more information, call
1-800-4-A-DODGE.

♻️ Printed in U.S.A. on recycled paper.



Viper



Stealth



Neon Coupe



Neon Sedan



Avenger



Stratus



Intrepid



Caravan



Grand Caravan



Dakota



Ram Pickup



Ram Van



The New Dodge

