

THE 1994
ISUZU
TROOPER



TROOPER S

With its emphasis firmly on value, Trooper S features a 175-hp V6, 4-wheel drive, 4-wheel ventilated disc brakes, Rear-Wheel Anti-lock Brakes and a 100-watt stereo cassette sound system.

TROOPER RS

Welcome to the sport coupe of Sport Utility Vehicles. Powered by our 190-hp V6 engine, the Trooper RS is seriously sophisticated, and seriously fun to drive.

TROOPER LS

Part luxury sedan and part Sherman tank, Trooper LS combines rugged versatility with exceptional security, substance and refinement.



THE ENGINEERS OF THE ISUZU TROOPER COULDN'T
CAVED IN TO CONVENTIONAL WISDOM. THE KIND
THAT SAYS YOU CAN'T CROSS A RUGGED 4x4 WITH A

LUXURY SEDAN. THE KIND THAT SAYS A VEHICLE THAT'S INCREDIBLY
IT'S AMAZING WHAT CAN
PRACTICAL CAN'T POSSIBLY BE AN ABSOLUTE JOY TO DRIVE. THE KIND
HAPPEN WHEN YOU
THAT SAYS, IN ESSENCE, "YOU CAN'T GET THERE FROM HERE." INSTEAD,
REFUSE TO COMPROMISE.

THEY DID WHAT YOU'D DO: THEY WENT FOR IT ALL. AND MADE TROOPER A

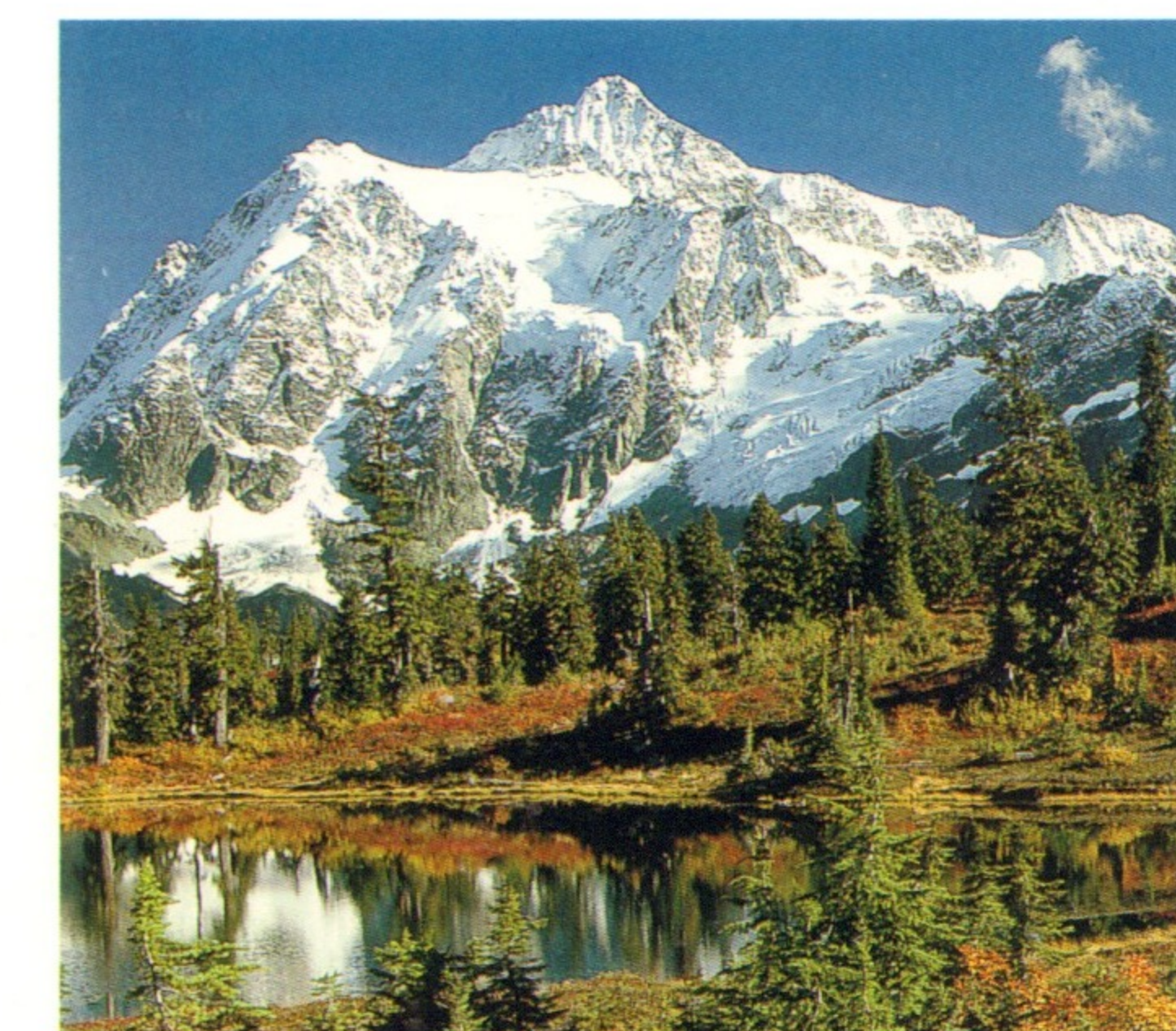
SPORT UTILITY VEHICLE THAT CAN TAKE YOU

180 DEGREES FROM HO-HUM. YET NEVER LEAVE

YOU WITHOUT THE SOPHISTICATED AND

SECURITY YOU DEMAND. LET'S FACE IT: LIFE'S FULL OF COMPROMISES. BUT

THAT DOESN'T MEAN YOU SHOULD FILL YOUR GARAGE WITH ONE.





TROOPER

LS

SUZUKI

IT'S A PITY
THERE ARE
ONLY 52
WEEKENDS
A YEAR.

Sure, Trooper can look the part Monday through Friday. In fact, its stylish shape and impeccable fit and finish are more than a match for the luxury cars crowding the office parking lot. But chances are, by Saturday, you and your Trooper will have escaped both the office and the crowds.

▼ Trooper RS combines rugged 4x4 capability and ample cargo room with the sophisticated comfort of a performance machine.



TROOPER LS



TROOPER LS

IT'S POSSIBLE TO ESCAPE CIVILIZATION WITHOUT ACTUALLY LEAVING IT.

It's one of life's little ironies: a Trooper can take you to some of the roughest, most remote locations on earth, yet keep you right in the center of a highly civilized world – the Trooper interior. The seating is richly upholstered and deeply cushioned. It's practically as quiet as the local library. And its standard features are anything but standard issue. In fact, the

From the driver's point of view, it's easy to see why Trooper is such a great escape vehicle. A complete set of gauges keeps you informed, while a 100-watt AM/FM stereo cassette keeps you entertained.

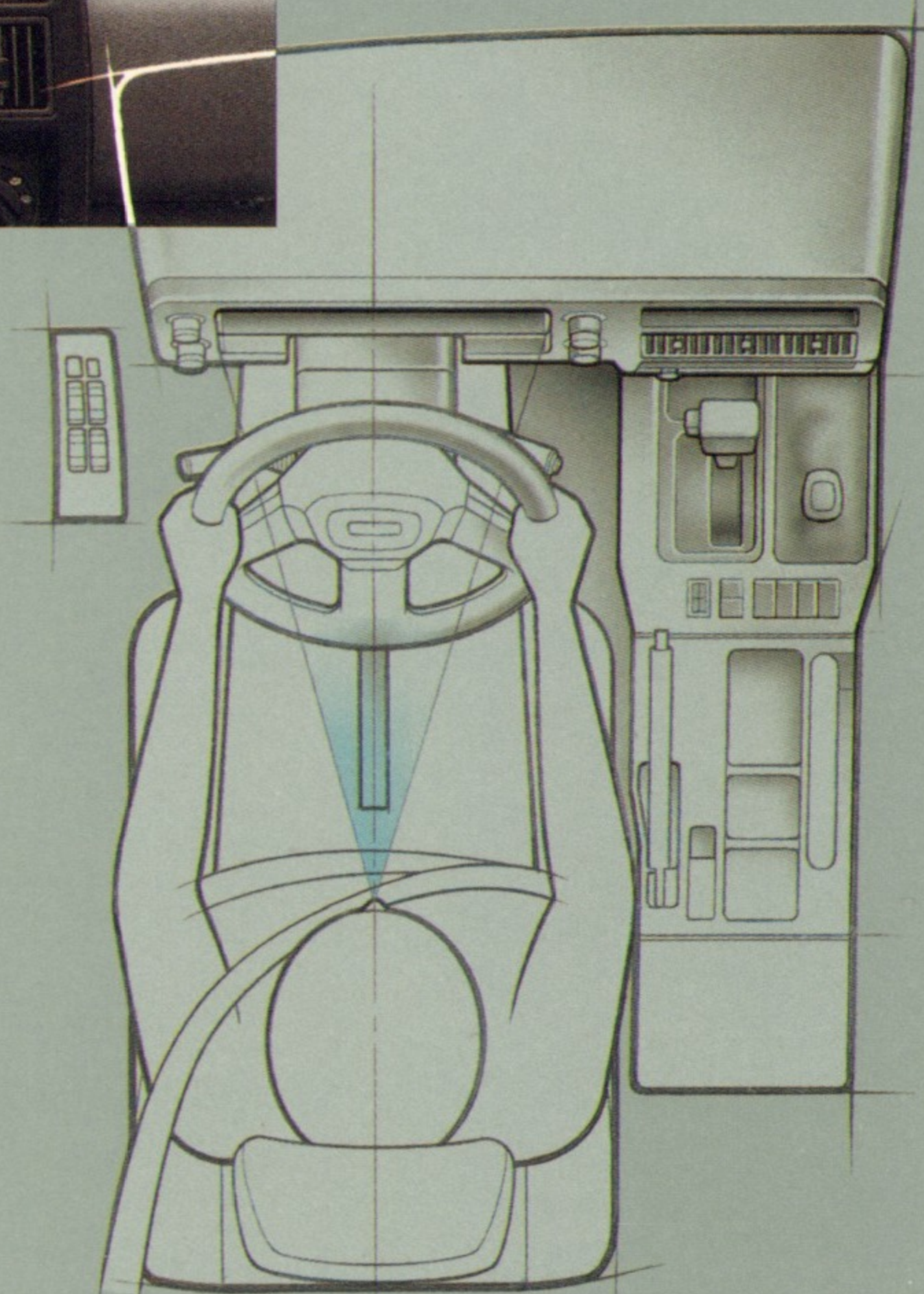
On Trooper LS and RS, standard features include conveniences like power windows with driver's express-down and power door locks that also lock and unlock the back door.

Trooper's "solidity and refinement" so impressed *Motor Trend*, "it drew more than one comparison to the much pricier Range Rover." Now, isn't that ironic.



Even on a brief test drive, you'll sense Trooper's superb ergonomic design at work.

You sit up high in a Trooper, so your view of the road ahead is commanding. Gauges



are big and legible. Large control knobs allow for ease of operation, even with ski gloves on. Your eyes never stray far from the road: wipers, flashers and climate controls can be operated almost by instinct.

TROOPER S and LS are

built for people who think big. Their spacious cabins let five adults stretch out in comfort. Or they'll accommodate up to 90 cubic feet of cargo. (That's roughly four times what a typical refrigerator holds. Think of the picnic you could pack.) The rear seat with adjustable head restraints reclines up to 40 degrees.¹ Getting in and out of a Trooper S or LS is a cinch, too. No less than seven grab handles lend you a hand when you enter or exit.

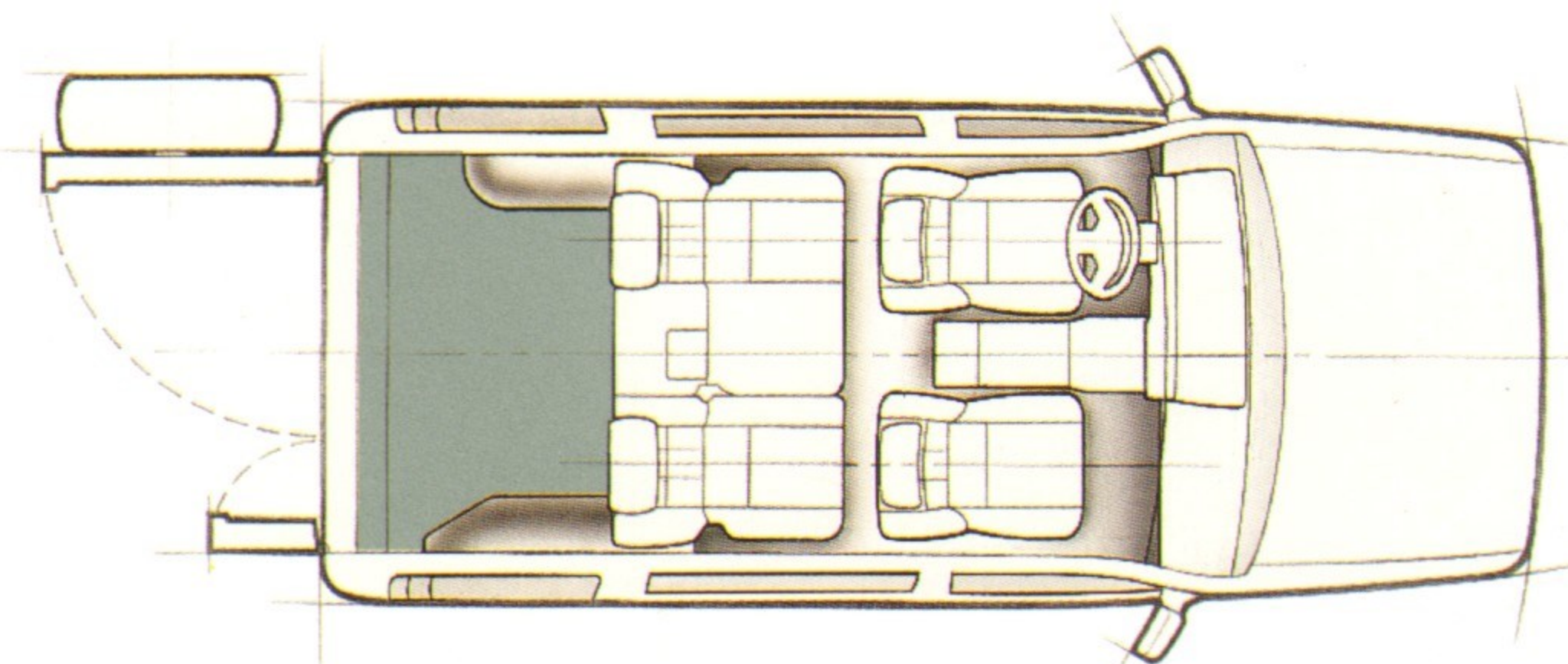
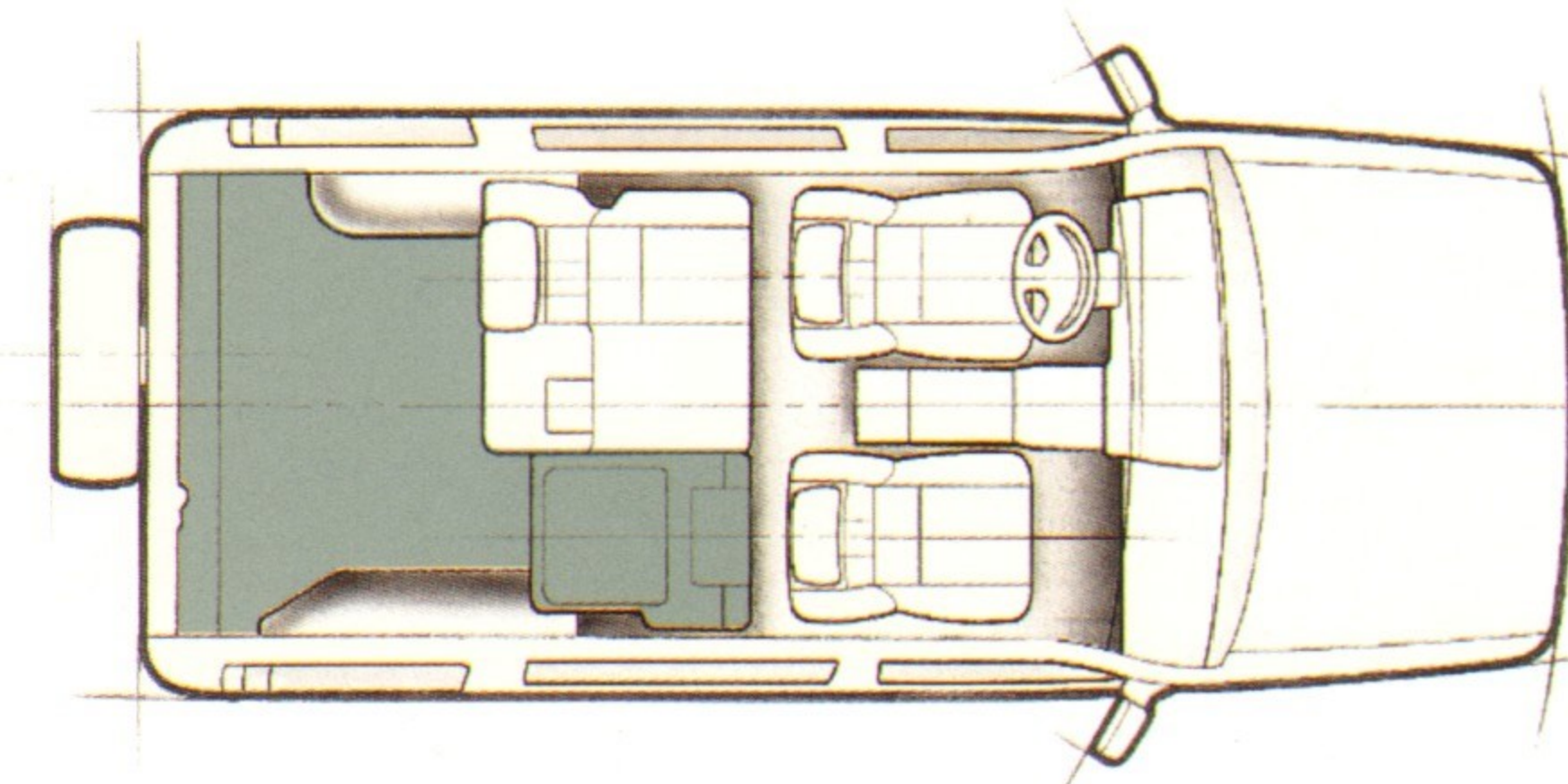
▶ Trooper LS: not only is it "more spacious and more luxurious than the Jeep Grand Cherokee," according to *Automobile Magazine*, but it's "more sporting to drive...than Ford Explorer." Whose turn is it to drive?



◀ Trooper's unique 70/30 split rear doors can be opened with one hand, one at a time. The main door swings to the left, leaving an open path to the curb. And you won't have to climb over a tailgate, or jump to reach an open hatch.

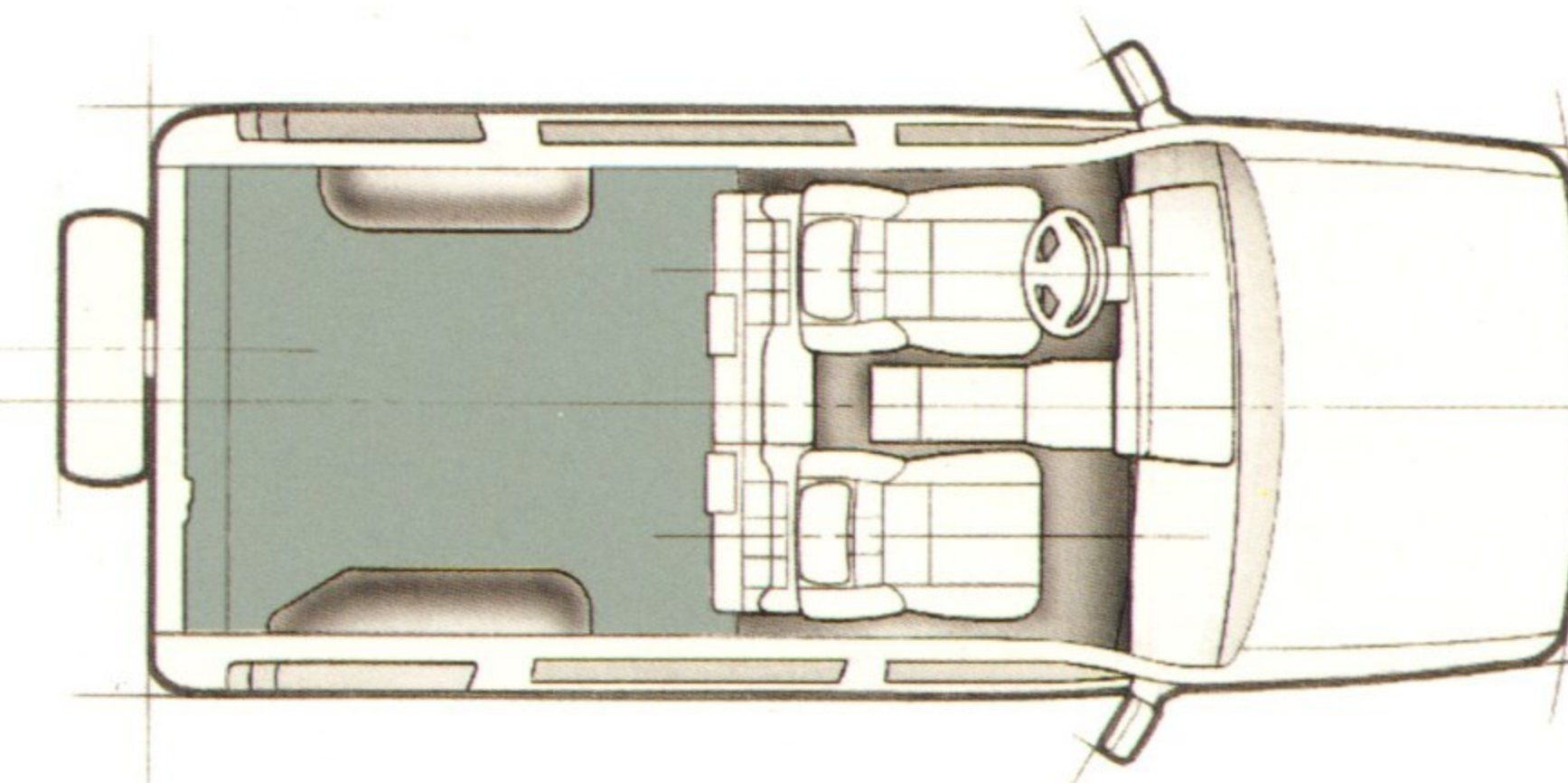
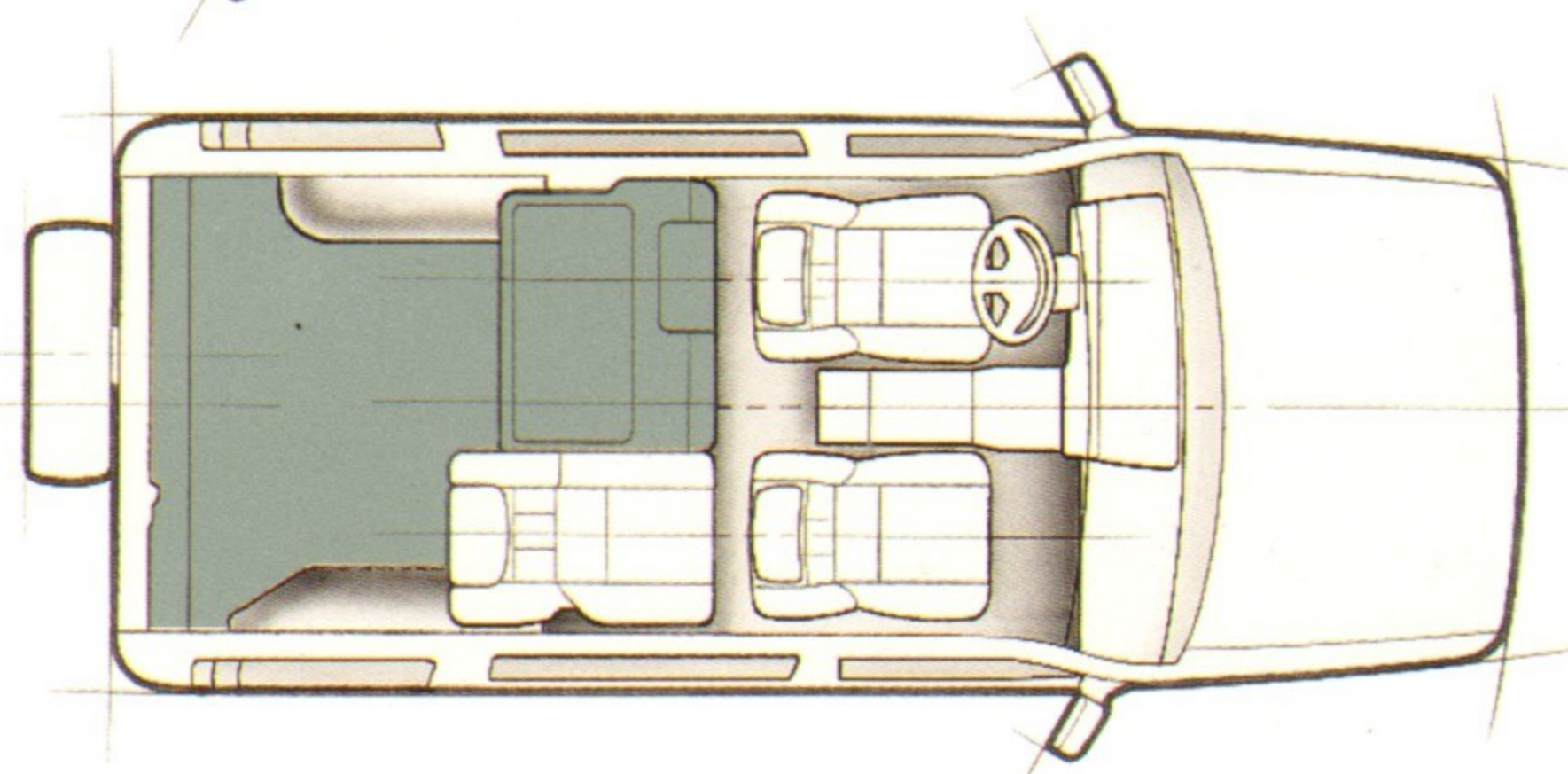


▼ A 60/40 split rear seat — standard on the LS and optional on the S model — folds to expand cargo room yet still leave lots of room for a rear-seat passenger.



◀ With the rear seat in the full upright position, you're prepared to take off with five adults and up to 46.3 cubic feet of luggage on board.

▶ Fold down the larger of the two split rear seatbacks and there's room for one passenger and more cargo. Tie-down hooks in the fully carpeted floor help prevent your cargo from shifting.



▶ Fold the entire rear seat forward, and you'll have 90.2 cubic feet to load up. Under the seat, a storage bin conceals valuable items.

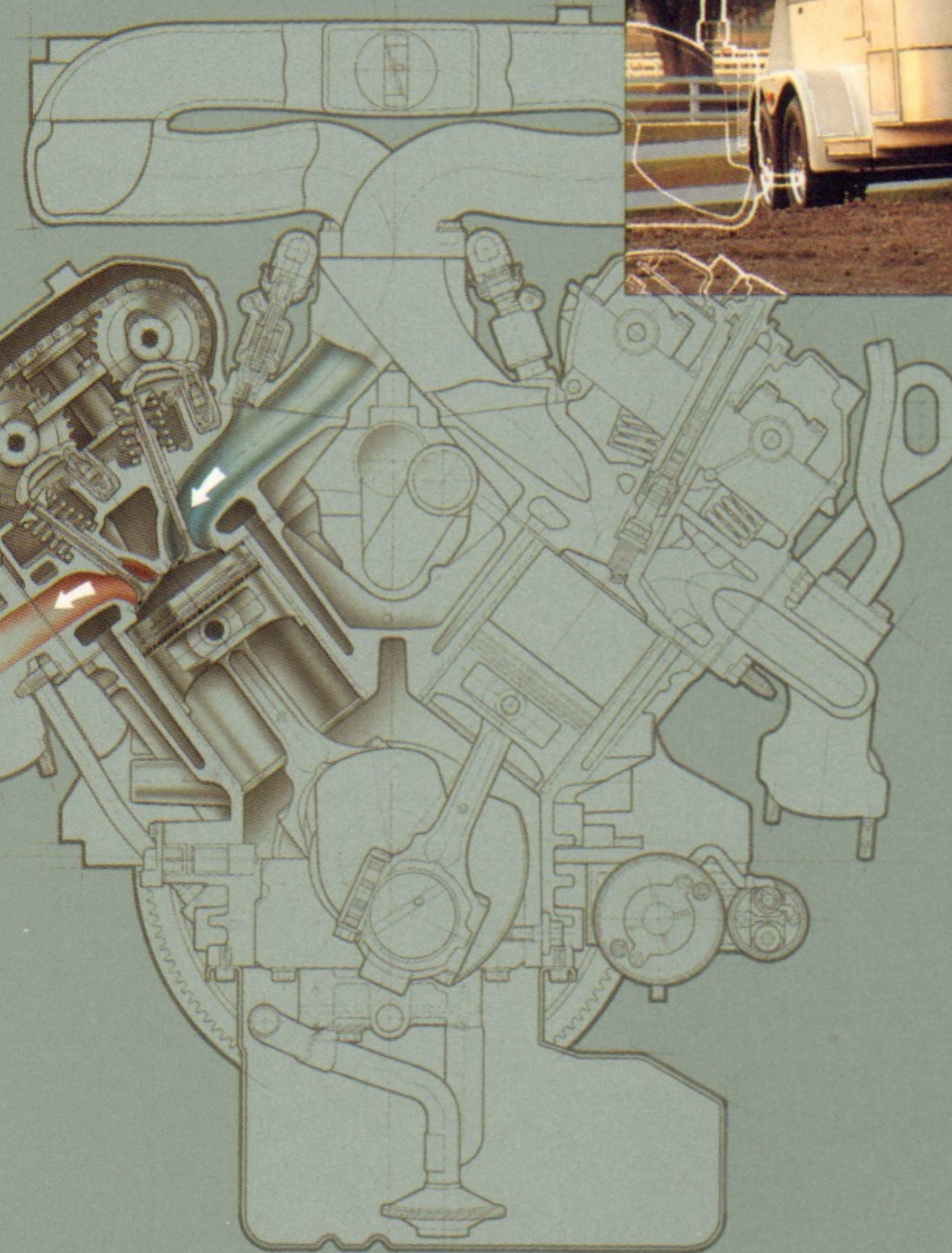
How's this for a warm welcome? Trooper LS offers optional heated power front seats with leather seating surfaces. To position the seat to your satisfaction, just touch the buttons: the driver's seat adjusts four ways, while the passenger seat adjusts two ways.



¹ Recline feature standard on LS, optional on S. See Features & Options chart for details.

You hear people talk about horsepower all the time. But what also matters is torque.

It's the muscle an engine flexes when you step on the gas.



Isuzu Trooper powerplants give you serious muscle – as much as 195 lb-ft of torque-rich response. In fact, equipped with approved hitch and trailer brakes, Trooper has the capacity to tow up to 5000 pounds.

EVEN ITS ENGINE IS A CROSS BETWEEN SPORT AND UTILITY.

The engine in a lot of Sport Utilities is nothing more than a mechanical compromise – a pickup truck engine trying to pass itself off as a sophisticated powerplant. Trooper's V6, on the other hand, was created specially for Trooper. To rival the refined performance of luxury-car engines, it uses four-valve-per-cylinder technology. An aluminum-alloy block improves acceleration. Multi-point fuel injection makes for reliable starts and increased efficiency. And, to cut maintenance costs, it uses hydraulic valve lifters and a distributorless ignition.

▶ Every Trooper comes with a powerful 3.2-liter 24-valve V6. The SOHC version in the Trooper S gives you 175 hp. The LS and RS have an even gutsier DOHC engine that puts out 190 horses.

▶ Every Trooper features 4-wheel drive with auto-locking front hubs. A winter mode on the 4-speed automatic reduces wheelspin on slippery starts. A power mode enhances performance.



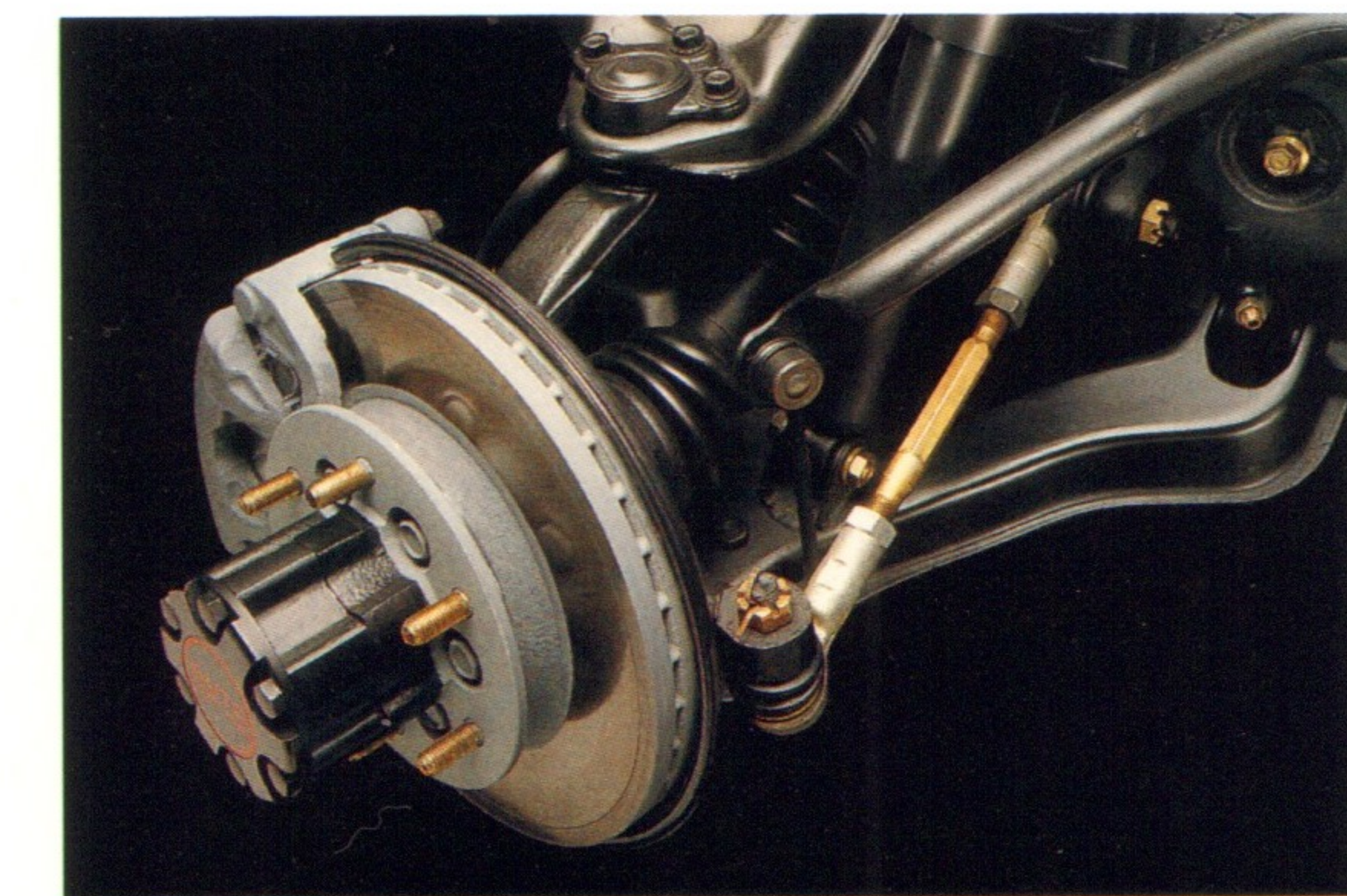
TROOPER LS

A COMFORTABLE RIDE NO MATTER WHAT YOU'RE RIDING OVER.

▶ Trooper's 4-wheel-drive system is easy to use. Just stop, slip into 4WD and take on the mud, snow or off-highway terrain with confidence and control.

A lot of Sport Utility Vehicles sacrifice ride comfort and handling precision to give you the rugged capability of a 4x4.

But Trooper's designed with a unique four-link rear suspension that delivers precise axle control and generous wheel travel. It works with the double-wishbone front suspension and power-



assisted steering to create both a comfortable ride and confident control - on the highway or off.

▶ Along with its four-wheel ventilated disc brakes, Trooper S and Trooper RS give you the stopping power of a Rear-Wheel Anti-lock Brake System. Four-wheel ABS is standard on Trooper LS, optional on Trooper S and Trooper RS.

▶ Our 16-inch tires were designed especially for Trooper. These are serious mud and snow tires, yet they're quiet and smooth-riding on the highway.



TROOPER S

How far can you take a Trooper? It's up to you. The Trooper S, below, is fitted with the Preferred Equipment Package. It includes power mirrors, windows and door locks, a split folding rear seat, cruise control, air conditioning, retractable cargo cover and convenience net.

Add the Appearance Package, also shown below, and you get alloy wheels with locks, a bright grille, bright outside mirrors and color-keyed bumpers.

Your Isuzu dealer has additional accessories, like the nose mask shown here, to help you make your Trooper yours alone.



1 The 60/40 split rear seat features an armrest, adjustable head restraints, and seatbacks that recline up to 40 degrees. (Standard on Trooper LS, optional on Trooper S.)

2 Trooper LS is available with an expansive tinted glass sliding electric sun-roof with sunshade.



4 A retractable cargo cover hides valuable items you have stowed in the back of your Trooper. (Standard on RS and LS, optional on S.)



3 An available in-dash CD player creates flawless sound; special construction resists skipping. The radio antenna automatically lowers when you play a CD to help reduce wind noise.



5 Properly equipped, the Trooper can tow a Class III trailer. With this dealer-installed trailer hitch and wiring harness, towing capacity is 5000 pounds.



Trooper's exterior body panels are galvanized to help prevent corrosion. Then we give every new Trooper a tough, chip-resistant five-coat paint finish. We even paint the parts only the road sees - four times. Nine coats in all. Then we bake it. All to ensure that the colors you see here look good year after year. In fact, Trooper comes with a 72-month/100,000-mile limited warranty that covers perforation from corrosion.

Trooper S

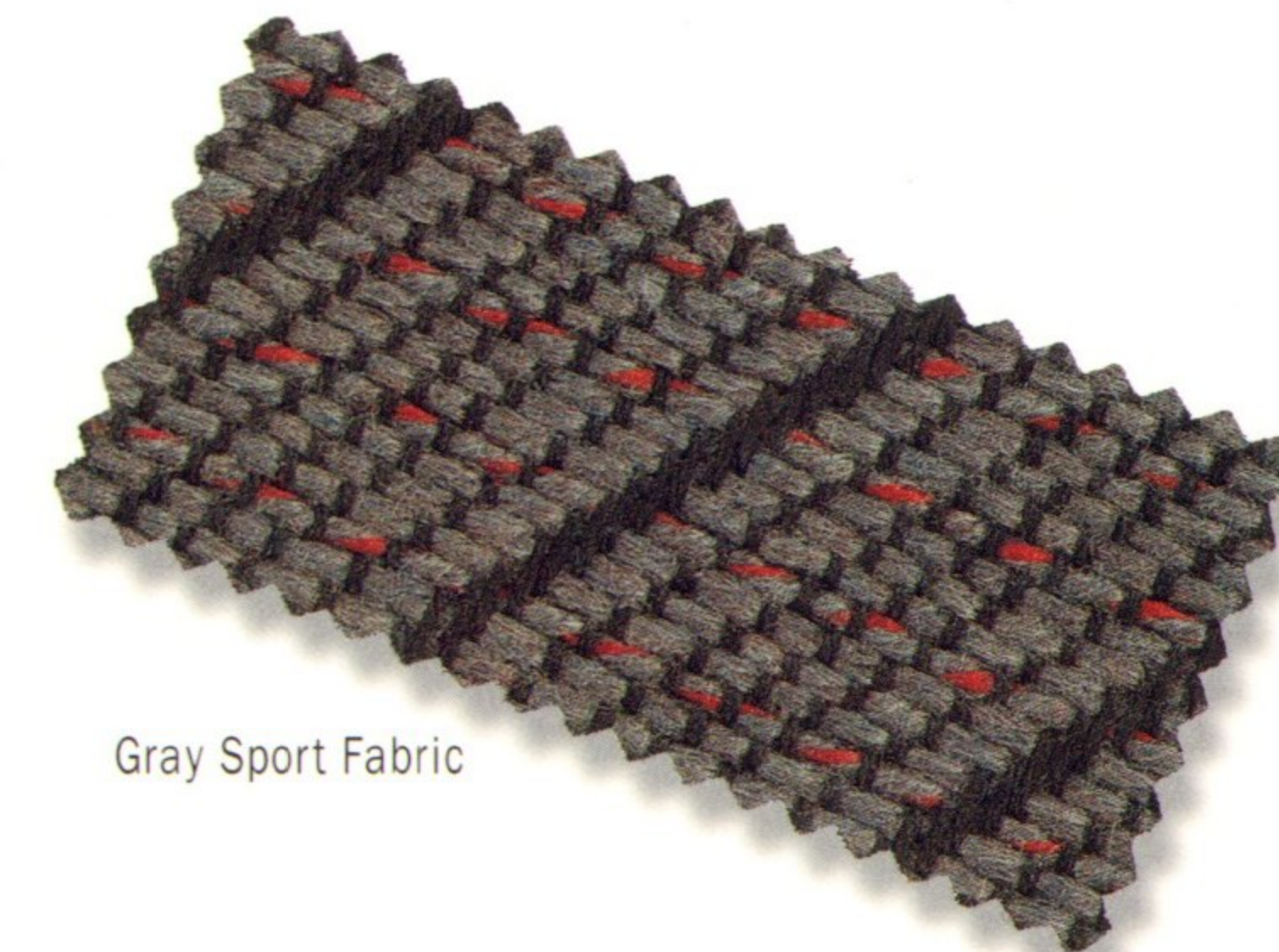


Gray Knit Fabric



Brown Knit Fabric

Trooper RS



Gray Sport Fabric

Trooper LS



Gray Moquette Fabric



Brown Moquette Fabric



Optional Gray Leather

*Metallic
¹Mica
¹Not available with Appearance Package.
²Available with optional gray leather seats, gray interior.

Comprehensive Warranty

Coverage When you build a Trooper the way we do, you can really stand behind it. Isuzu offers one of the most comprehensive warranty programs around. Including a standard 36-month/50,000-mile limited warranty, a 60-month/60,000-mile powertrain limited warranty with no deductible, and a 72-month/100,000-mile limited warranty that covers perforation from corrosion. All warranties are effective from the date of first use. Your Isuzu dealer can give you all the details of what our warranty covers.

The Isuzu Protection Plan

You can add even more coverage with the Isuzu Protection Plan. It covers repairs to major components, as well as towing and rental reimbursements. It offers low-cost coverage designed to match your driving needs, with options up to 72 months/100,000 miles. This plan is transferable and it can be financed with your vehicle purchase. Ask your participating Isuzu dealer for all the details on this comprehensive program.

Roadside Assistance Lock yourself out? Run out of gas? Have a flat tire? Isuzu offers a free 24-hour Roadside Assistance Program that's there for you 365 days a year.

SPECIFICATIONS				
		S	RS	LS
ENGINE				
Engine type		SOHC 24-valve 75° V6	DOHC 24-valve 75° V6	
Engine construction		Aluminum-alloy block and cylinder heads		
Displacement		3.2 liters (193 cu in)		
Horsepower	(SAE net)	175 @ 5200 rpm	190 @ 5600 rpm	
Torque	(SAE net, lbs-ft)	188 @ 4000 rpm	195 @ 3800 rpm	
Fuel supply		Multi-point fuel injection		
Ignition		Direct, distributorless		
Compression ratio		9.3:1	9.8:1	
DRIVETRAIN				
Drive configuration		Front-engine/rear-wheel drive with part-time 4-wheel drive and auto-locking front hubs		
Transmission type	(standard/optional)	5-sp manual / 4-sp automatic with 2nd, 3rd and 4th gear lockup		
Gear ratios	1st	3.767 manual / 2.856 automatic		
	2nd	2.248 manual / 1.618 automatic		
	3rd	1.404 manual / 1.000 automatic		
	4th	1.000 manual / 0.723 automatic		
	5th	0.809 manual / —		
	Reverse	3.873 manual / 2.000 automatic		
Rear axle ratio		4.555		
Transfer case ratios		1.00 high / 2.28 low		
CHASSIS/SUSPENSION				
Suspension	Front	Independent double-wishbone arms with torsion bar springs and 1"-diameter stabilizer bar		
	Rear	4-link with coil springs and 3/4"-diameter stabilizer bar		
Shock absorbers		Double-acting hydraulic	Gas-charged hydraulic	Double-acting hydraulic
	System	Power-assisted, self-adjusting with audible wear sensors		
	Front	11.0" ventilated disc		
	Rear	12.3" ventilated disc		
Brakes		Power-assisted, self-adjusting with audible wear sensors		
Steering		Engine-speed sensing variable-assist power, recirculating ball, 3.6 turns lock-to-lock		
Wheels		6-lug, 7JJ x 16" steel	6-lug, 7JJ x 16" aluminum	
Tires		P245/70R16 tubeless mud-and-snow rated all-season radial		

EPA MILEAGE ESTIMATES*				
		S	RS	LS
CONFIGURATION				
5-speed manual	(mpg)	16 city/18 hwy	15 city/17 hwy	15 city/17 hwy
4-speed automatic	(mpg)	15 city/18 hwy	15 city/18 hwy	15 city/18 hwy

*Use estimated EPA figures for comparison. Your mileage may vary due to speed, weather, trip length and road conditions. Actual highway mileage will probably be lower.

WEIGHTS & CAPACITIES				
		S	RS	LS
VEHICLE				
Curb weight	(lbs)	4210	4060	4255
Fuel tank	(gals)	22.5		
PASSENGER ROOM				
Headroom	(front, in)	39.8		
	(rear, in)	39.8		
Legroom	(front, in)	40.8		
	(rear, in)	39.1	32.2	39.1
CARGO ROOM				
Volume	(rear seat up, cu ft)	47.3	30.5	46.3
	(rear seat folded, cu ft)	90.2	68.3	90.2
Floor length	(rear seat up, in)	36.4	23.6	32.3
	(rear seat folded, in)	60.8	43.3	60.8

EXTERIOR DIMENSIONS				
		S	RS	LS
Wheelbase	(in)	108.7	91.7	108.7
Overall length ¹	(in)	183.5	166.5	183.5
Overall width	(in)	68.7		
Overall height	(in)	72.8		
Tread width	(front, in)	57.3		
	(rear, in)	57.5		
Overhang	(front/rear, in)	31.1/39.0		
Ground clearance	(in)	8.5		
Turning circle ²	(ft)	38.1	32.8	38.1
Angle of approach		39°		
Angle of departure		31°		
Breakover angle	(5-sp)	22°	24°	22°
	(auto)	20°	23°	20°

¹ = Including spare tire.
² = Curb-to-curb turning diameter.

FEATURES & OPTIONS				
S = Standard O = Optional P = Package -- = Not Available				
		S	RS	LS
MECHANICAL				
5-speed manual transmission		S	S	S
4-speed automatic transmission with power and winter modes, instrument-panel indicator		O	O	O
Part-time 4-wheel drive with 2-speed transfer case and auto-locking front hubs		S	S	S
Limited-slip differential		O ¹	S	S
Variable-assist power steering		S	S	S
Class III (5000-lb) towing capacity (requires approved hitch and trailer brakes)		S	S	S
SAFETY				
Power-assisted 4-wheel ventilated disc brakes		S	S	S
Rear-Wheel Anti-lock Brake System		S	S	—
4-wheel Anti-lock Brake System (ABS)		O	O	S
Side-guard door beams		S	S	S
High-mounted LED stop light		S	S	S
Skid plates for radiator, transfer case, exhaust crossover pipe, transmission oil pan, catalytic converter and fuel tank		S	S	S
Flush-mounted halogen headlights		S	S	S
Headlight wiper/washer system		—	S	S
3-point front and rear outboard seat belts		S	S	S
Child-seat tether anchor		S	S	S
Child-safe rear side door locks		S	—	S
Day/night rearview mirror		S	S	S
Dual outside mirrors, right side convex		S	S	S
Dual power outside mirrors with defoggers and power fold-in, right side convex		P ²	S	S
2-speed/intermittent wipers		S	—	—
2-speed/variable intermittent wipers		—	S	S
Rear window wiper/washer (with auto-cycle washer and intermittent setting on RS, LS)		S	S	S
Rear window defogger with automatic timer		S ³	S	S
EXTERIOR				
70/30 vertically split rear doors		S	S	S
Integrated rear air deflector		S	S	S
Rear-door outside-mounted full-size spare tire with vinyl cover		S	S	S
Integrated fog lights		—	S	S
Cornering lights		S	S	S
16" styled steel wheels with trim rings		S	—	—
16" aluminum-alloy wheels (includes spare)		P ⁴	S	S
Wheel locks		P ⁴	S	S
Flip-out quarter windows		—	S	—
Privacy glass on all windows behind front doors, including rear doors		—	S	S
Rear step bumper with integral step pad		S	S	S
Color-keyed front and rear bumpers		P ⁴	S	S
Chip-resistant rocker panel coating		S	S	S
Color-keyed rocker moldings with integral front and rear mudflaps		—	S	S
Bright radiator grille and exterior trim		P ⁴	—	S
Color-keyed radiator grille surround		—	S	—
Two-tone paint		—	S	O
Tinted glass sliding electric sunroof		—	—	O

¹ = Requires both optional Preferred Equipment Package and optional Appearance Package.
² = Included in optional Preferred Equipment Package.
³ = Without timer on Trooper S.

FEATURES & OPTIONS				
S = Standard O = Optional P = Package -- = Not Available				
		S	RS	LS
INTERIOR/SEATING				
Reclining front bucket seats		S	S	S
4-way driver seat (fore/aft, front tilt, rear tilt, recline)		—	S	S
Leather Trim Package: Gray leather seating surfaces, 4-way power driver seat (fore/aft, front tilt, rear tilt, recline), 2-way power front passenger seat (fore/aft and recline), electrically heated front seats		—	—	O
Individual front-seat fold-down armrests		—	S	S
Passenger-side walk-in device		—	S	—
Adjustable front and rear head restraints (4)		S	S	S
Folding rear bench seat		S	—	—
Folding/reclining rear seat with center armrest		—	S	—
60/40-split folding and 40° reclining rear seats with fold-down center armrest		O/P ²	—	S
Assist grips (3) and grab handles		S	S	S
Removable carpeted floor mats		S	S	S
Concealed rear storage compartment		S	S	—
Cargo-area tie-down hooks		S	S	S
Retractable/removable cargo cover		O/P ²	S	S
Removable convenience net		O/P ²	S	S
Protective cargo floor rails		—	S	S
COMFORT/CONVENIENCE				
Air conditioning with CFC-free refrigerant		O/P ²	S	S
Rear-seat heater ducts		S	S	S
Cruise control with cancel and resume		P ²	S	S
Power windows with driver's express-down		P ²	S	S
Power door locks, including rear door		P ²	S	S
Tilt steering wheel, soft-grip		S	—	—
Tilt steering wheel, leather-wrapped		—	S	S
Center storage console with beverage holder		S	S	S
Remote hood and fuel door openers		S	S	S
Dual visor vanity mirrors with lids		S	S	S
Dome, cargo-area and door courtesy lights		S	S	S ⁵
Dual map lights		—	S	S
High-power (100-watt) AM/FM stereo cassette sound system, 4 speakers		S	—	—
Premium high-power (100-watt) AM/FM stereo cassette sound system, 6 speakers		P ²	S	S
Compact disc player		O ⁶	O	O
Automatic power antenna		—	S	S
Headlights-on reminder chime		S	S	S
Anti-theft security system		—	S	S
Tachometer, coolant temperature and oil pressure gauges, voltmeter, trip odometer		S	S	S
Digital clock (in radio display)		S	S	S
Preferred Equipment Package: Power windows, door locks and outside mirrors with defoggers, air conditioning, cruise control, premium 6-speaker sound system, 60/40-split folding/reclining rear seat, cargo cover, convenience net		O	—	—
Appearance Package: 16" alloy wheels with locks, bright grille and outside mirrors, color-keyed bumpers		O ⁶	—	—

⁴ = Included in optional Appearance Package, which requires optional Preferred Equipment Package.
⁵ = Dome light includes delayed-off feature on Trooper LS.
⁶ = Requires optional Preferred Equipment Package.

As Japan's oldest car maker, Isuzu has always had a commitment to quality. Today, that tradition continues. Our goal is to meet your needs by building trucks and Sport Utility Vehicles that deliver exceptional value and lasting satisfaction. And to back every vehicle we make with comprehensive warranties. If you haven't done so already, we invite you to visit your local Isuzu dealership for a complete test drive. Because ultimately, driving an Isuzu is far more satisfying than simply reading about one.

Isuzu is a worldwide leader in designing and developing exciting specialty vehicles. Featured (top to bottom) are the 1994 Isuzu Pickup, Amigo, Rodeo and Trooper.



Practically/Amazing

TREAD LIGHTLY! OFFICIAL SPONSOR
ON PUBLIC AND PRIVATE LAND

At Isuzu, we're committed to protecting the environment, ensuring that our lands will remain unspoiled for generations to follow. Isuzu sponsors and supports the U.S. Forest Service's "Tread Lightly!" program, and the Bureau of Land Management's "Back Country Byways" program which steers drivers to designated roads. We urge you to drive responsibly when exploring nature's wonders. Let's work together to keep America beautiful.

All photographs, illustrations, equipment and technical data shown in this brochure are based upon the latest available information at the time of publication. American Isuzu Motors Inc. reserves the right to make changes at any time, without notice, in prices, colors, materials, equipment, specifications and models, and to discontinue models or equipment. Some vehicles are shown with optional equipment. Some equipment shown is dealer-installed. This Isuzu vehicle is assembled from component parts manufactured by Isuzu and its affiliated companies and by independent suppliers who manufacture such components to Isuzu's exacting standard for quality, performance and safety. **See your authorized Isuzu dealer for details or call (800) 795-9779 for more information.**