



1999 ISUZU

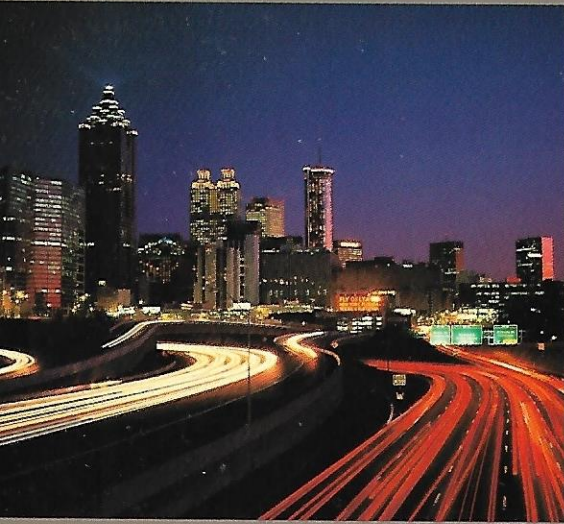
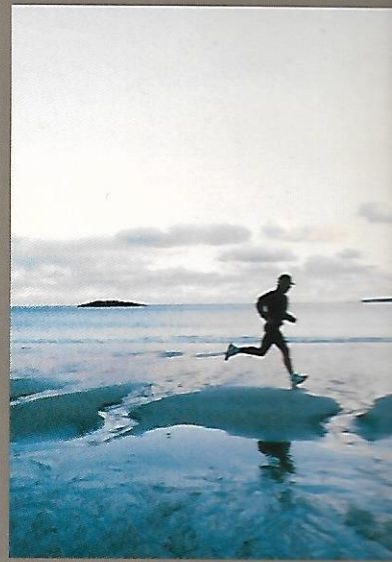
AMIGO



4WD

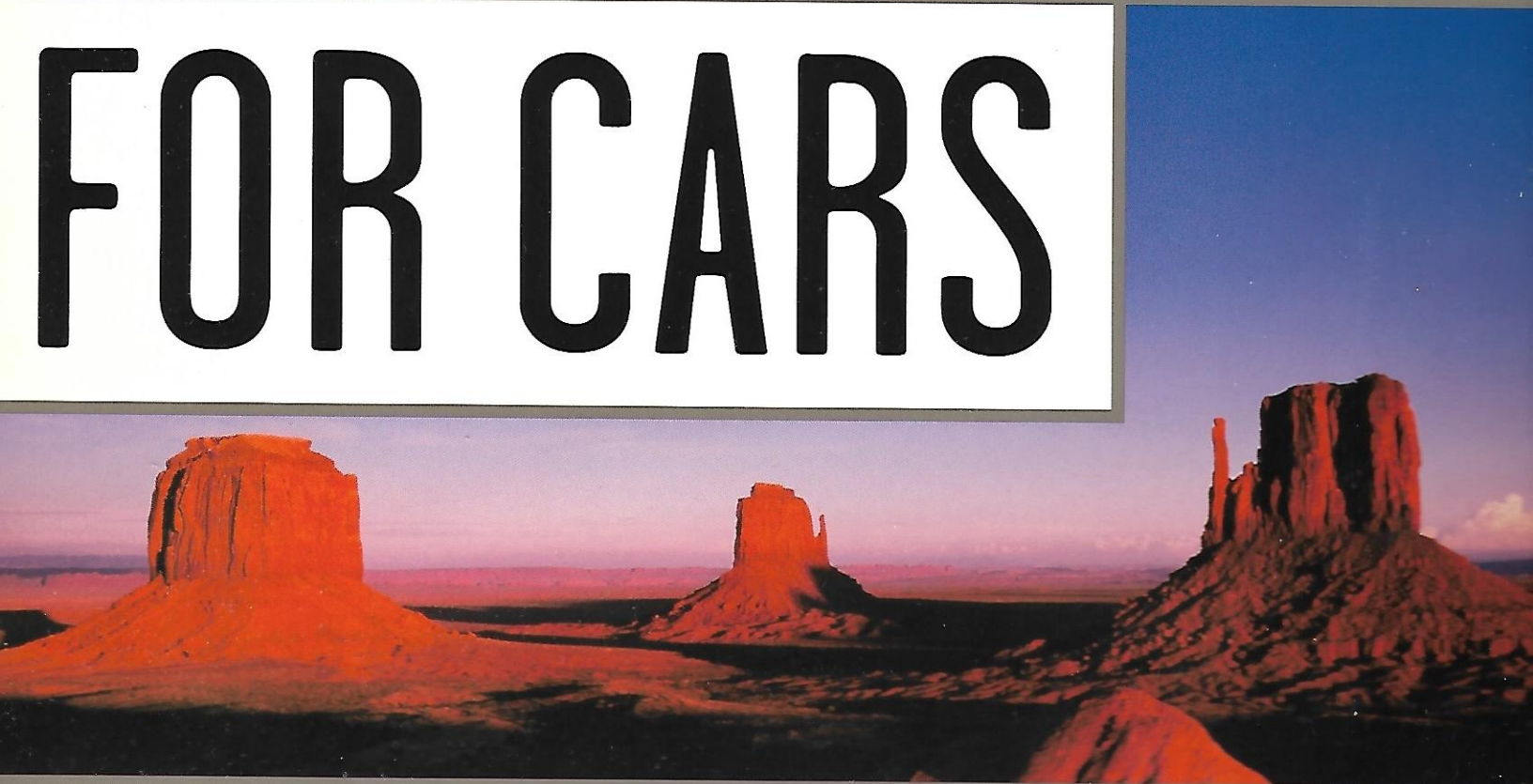
SU 885

LIFE IS



TOO BIG

FOR CARS



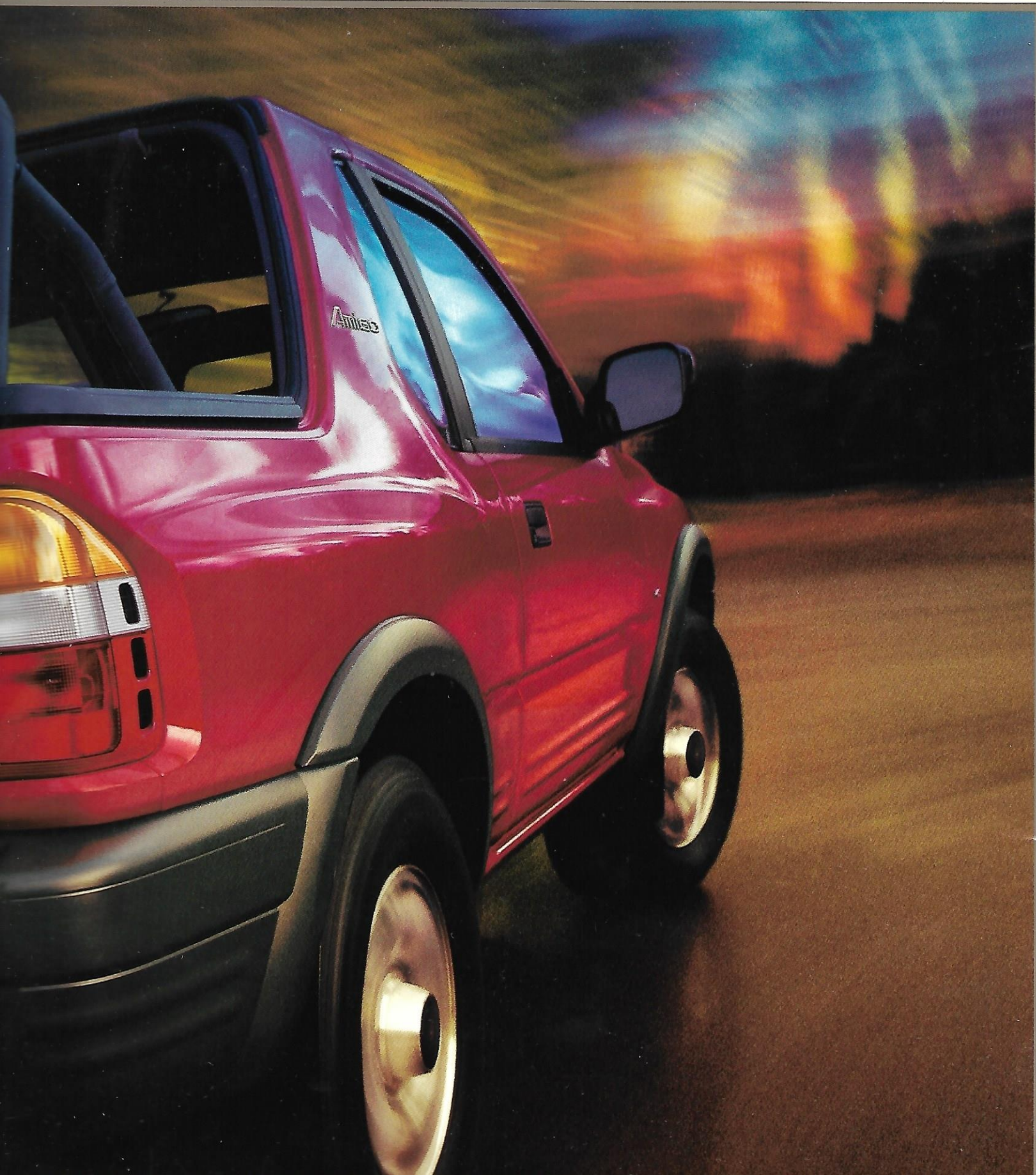
Amigo.

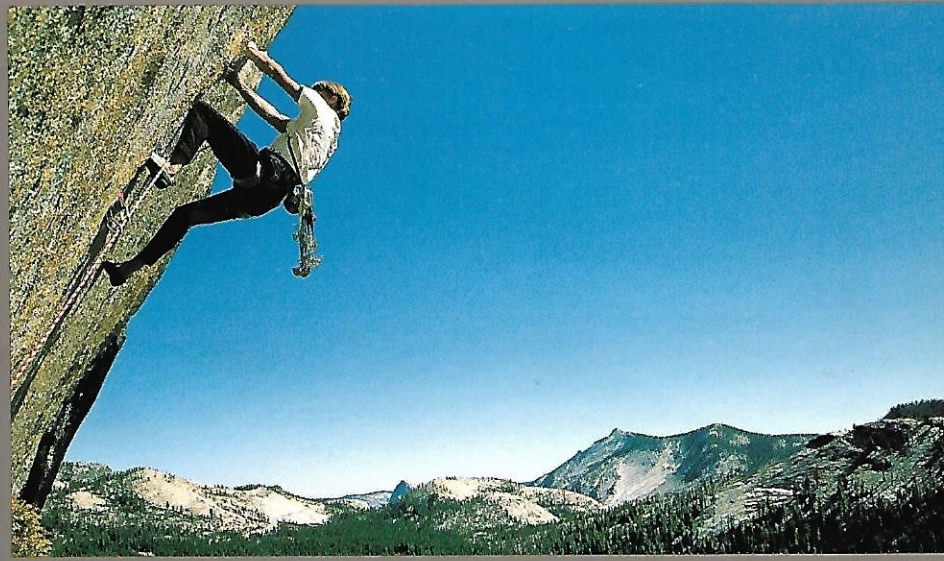
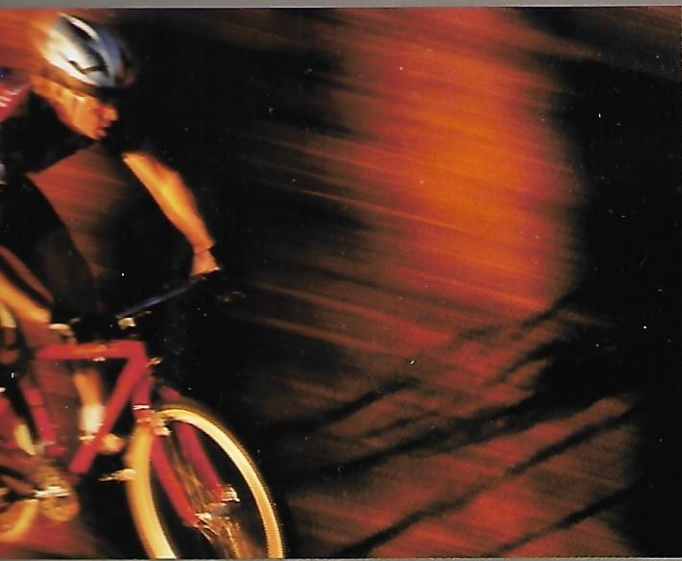
For those quickly growing bored with here

Departures daily.



-hopping, road-running E-ticket to anywhere.





You're reading this brochure, so you probably already know this: Life just doesn't fit in a car. There are too many things to do (boarding, biking, the Ironman). Too many places to go (the Yukon, the Gorge, Alpes d'Huez). And too much stuff to take with you (packs, paddles, coolers). That's why we don't even build cars. We build rugged, adventurous SUVs like the Amigo. Vehicles you can put big stuff in. Vehicles you can do big things in. Vehicles made for a big world. In other words, vehicles only an SUV specialist could build.







Amigo

ISUZU
Amigo

ISUZU

collect la

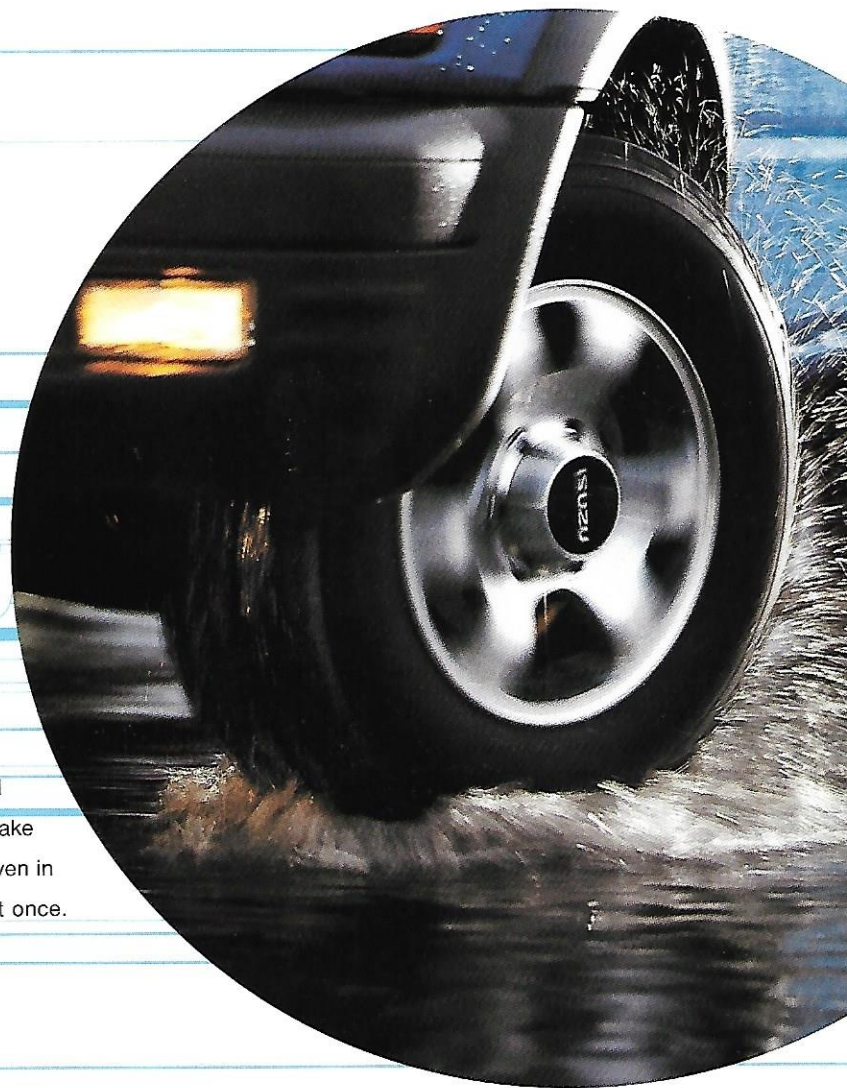


General's

On behalf of the race engineers who dialed in Amigo's suspension, we'd like to remind you of the rewards awaiting you in every corner. Something other companies seem to have forgotten.



Eco-Challenge. It's a nonstop 300-mile test of the outer limits of human performance. Test-drive an Amigo to see what 83 years of experience have taught us about what makes an SUV perform.



cornering

Rack & pinion steering

Sports cars use it. Rally cars use it. Amigo does too, for more sensitive feel, accurate handling and quicker response. Along with low-speed power assist that makes parking a cinch. Add the skid-repelling 4-wheel Anti-lock Brake System (ABS) that is always active, even in 4WD, and you can brake and steer at once.

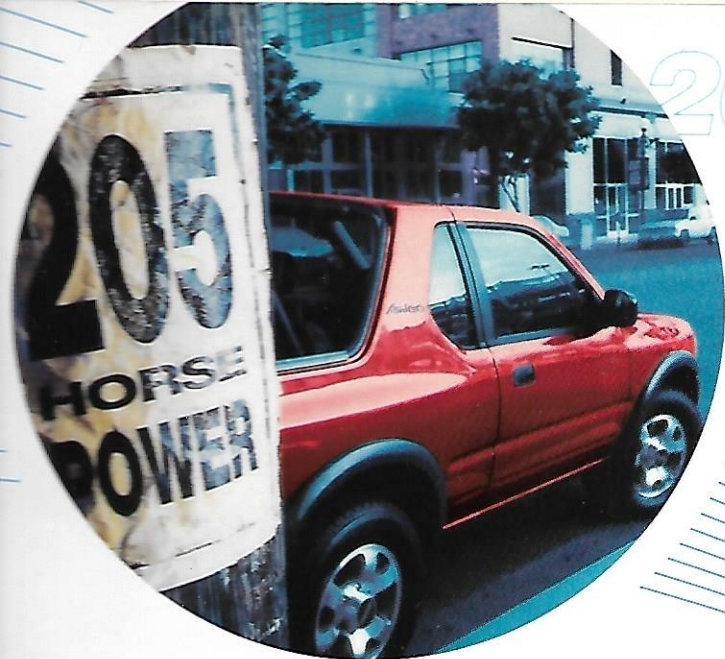


stability

All-road suspension



FLY



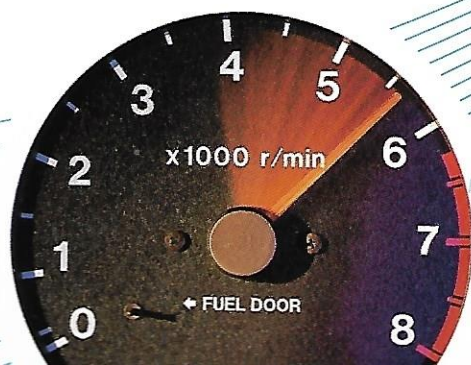
205-hp **Extra-strength engines**

A 130-hp 4-cylinder. A 205-hp V6. Either way, Amigo moves—quick. This thanks to low-friction dual overhead cams (to let the engines rev faster) and 4-valve-per-cylinder heads (to help the engines breathe better). Factor in the six's all-aluminum block and heads (for light weight) and computer-run variable air induction (for any-speed punch), and a V6 Amigo can launch you to 60 in under 8 seconds.

Amigo



under your right foot: the end product of five years' engine reengineering. Obviously, we didn't rush any of the enhancements. But rest assured, our Amigo will easily rush to the posted legal limit.



performance **Fast-acting transmissions**

Question: Do you like control or prefer to cruise?

Answer: A quick-shifting 5-speed manual gear-box, with ratios ripe for off-the-line thrust, not to





4WD

Push-button 4WD nonstop

Head off the pavement on the fly. Available electronic shift-on-the-fly 4-wheel drive lets you engage 4WD High at up to 60 mph—one touch of the dash-mounted button instantly delivers all-wheel traction.

ability transfer case

ok with a single 4-wheel-drive
many SUVs, the 4WD Amigo
option to shift into Low range
the driving force in deep snow,
d steep terrain.

dirt



What does the Amigo have to do with Eco-Challenge, not to mention the Ironman and Escape From Alcatraz triathlons (three events we're proud to be involved with)? Let's just say we're passionate about pushing limits.

skid plates

Underbody armor

We cordially invite you to head where the asphalt isn't. Every Amigo's radiator and fuel tank are shielded by tough galvanized-steel skid plates. As is the transfer case on 4-wheel-drive models.



blame it on us (for building a 2-door that lives to rip the rocky stuff).
You can blame it on the government (for not making paved roads that
are this much fun). Or you can just smile while carving up tasty terrain.
Either way, Amigo always cleans up nicely after a day at play.

appears



big air

Multiple moonroofs

Every Amigo's got one over the front seats. Hard top models get another over the rear seats, so you can get more sun while still limiting your exposure. Pop the tops out, or else just tilt the trailing edge up whenever you want ventilation.



topless

Simple soft top

Get the most air in your hair. Just zip out the rear windows, flip two latches and drop the top. No tools. No hassle. Plenty of wind. And when you want to take your ragtop Amigo off the paved road, sturdy straps hold the folded top securely in place.

all-season

Tailor-made hard top

Swap a little sun and air for a little more year-round, all-weather Amigo action. The hard top is permanently fixed and stylishly turned out to make your Amigo look like a sporty coupe. (Well, a coupe with big tires, a big interior and big-time SUV capability.) With it comes a fully secure tailgate with permanent glass and a rear-window defroster.





come to the Amigo open-air festival. Now playing:
Two models. One a ragtop. The other a twin-moonroof hard top.
You'll find three ways to work on your suntan. And
a feeling of freedom like nothing else.

chevy

take more



friends

You've got room for four of them in the Amigo—
and all their gear. Split the fuel bill five ways.
(You can't do that in any little roadster.
Or most other 2-door SUVs for that matter.)

Amigo acoustics

The stereo cassette system pipes tracks through four speakers—unless you opt for the 6-speaker system, of course. Upgrade either with a single-CD player.

Or top the 6-speaker setup with an in-dash 6-disc CD player.



Convertible cargo area

You've got gear. You've got passengers. Handle both with ease. Even with full seating for five, Amigo offers up to 21 cu ft of cargo area. Flip the rear seat bottoms up, fold the backs down, and you've got over 62 cu ft to play with. So pack heavy.



Cool cup holders

There are six of them—two up front



choices

shades

	4-Cylinder 2WD	4-Cylinder 4WD ¹	V6 2WD	V6 4WD
Security				
Engine and radiator skid plate	S	S	S	S
Front and 4WD actuator skid plates	—	S	—	S
Transfer differential	—	S	—	S
Front passenger air bags ²	S	S	S	S
Front and rear outboard seat belts w/adjustable front belt anchors	S	S	S	S
Seat belt	S	S	S	S
Door beams	S	S	S	S
Locks	—	—	P	P
Pass entry/alarm	—	—	P	P
Intermittent windshield wipers with mist wipe	S	S	S	S
Variable intermittent windshield wipers with mist wipe	—	—	P	P
Defroster and windshield wiper (hard top only)	S	—	S	S
	4-Cylinder 2WD	4-Cylinder 4WD ¹	V6 2WD	V6 4WD
Radiator grille and insert	S	S	S	S
Side mirrors and door handles	S	S	S	S
Outside mirrors (right convex) with defoggers	—	—	P	P
Mounted spare tire with cover	S	S	S	S
Steel wheels	S	S	S	S
Optional aluminum wheels with hybrid spare tire cover	O	O	O	O
Plastic steps	O	O	O	O
Privacy glass	S	S	S	S
Convertible soft top with zip-out vinyl windows and tilt-up tinted glass moonroof with sunshade	S	S	S	S
Removable plastic top with full interior trim and dual tilt-up tinted glass moonroofs with sunshades	S	—	S	S
(Soft top only)	O	O	O	O
Blackout center post (P245 tires required)	S	S	S	S
Bumpers, fender flares and blackout center post (P245 tires required, hard top only)	O	O	O	O
	—	—	—	O
Seating				
Front bucket seats	S	S	S	S
Rear bench seat with headrests	S	S	S	S
Upholstery	S	S	S	S
Driver's seat armrest	O	O	O/P	O/P
Steering wheel	S	S	S	S
Interior carpeting	S	S	S	S
Door mats	O	O	O/P	O/P
Hand assist grips and coat hook	S	S	S	S
Privacy net	O	O	O/P	O/P
Roll-over protection bar	S	S	S	S
Storage compartment	S	S	S	S
	4-Cylinder 2WD	4-Cylinder 4WD ¹	V6 2WD	V6 4WD
Convenience				
Air conditioning with CFC-free refrigerant	O	O	O/P	O/P
Power windows	—	—	S	S
Power windows with driver's one-touch express-down	—	—	P	P
AM/FM stereo/cassette player with 4 speakers	S	S	S	S
AM/FM stereo/cassette player with 6-speaker premium sound system	—	—	P	P
MP3 player	O	O	O	O
Disc CD player (PEP required)	—	—	O	O
Trunk with CD/cassette storage and dual cup holders	S	S	S	S
Trunk lid release (soft top only)	S	S	S	S
Interior visor vanity mirror	S	S	S	S
Interior dome light	S	S	S	S
Side marker lights	—	—	P	P
Power outlet	S	S	S	S
Temperature and fuel level gauges, trip odometer and low-fuel warning light	S	S	S	S
	S	S	S	S
Trunk and tailgate storage pockets	S	S	S	S



Palazzo Red Mica
(hard top only)



Radiant Red
(soft top only)



Bright Silver Metallic



Caprice Blue Metallic



Copper Orange Mica



Zephyr Green Mica



Ebony Black

O Optional — Not Available P Package Option

fabric interior trim



details specifications

Amigo models

	4-Cylinder 2WD	4-Cylinder 4WD ¹	V6 2WD	V6 4WD
Engine	2.2-liter inline four		3.2-liter V6	
Cylinder head construction	Cast iron/aluminum alloy		Aluminum alloy/aluminum alloy	
Valves	16-valve direct attack dual overhead camshaft		24-valve direct attack dual overhead camshaft	
Fuel system	Sequential multi-point fuel injection			
Ignition	Direct ignition		Direct ignition w/coil over plug	
Power/ torque	130 hp @ 5200 rpm 144 lb-ft @ 4000 rpm		205 hp @ 5400 rpm 214 lb-ft @ 3000 rpm	
Compression ratio	9.6:1		9.1:1	

	4-Cylinder 2WD	4-Cylinder 4WD ¹	V6 2WD	V6 4WD
Driveshaft system	—	Part-time with 2-speed transfer case & push-button 4WD-HI activation	—	Part-time with 2-speed transfer case & push-button 4WD-HI activation
Transmission	5-speed with overdrive		—	5-speed with overdrive (soft top only)
Transmission (1)	—		Electronically controlled 4-speed with overdrive, driver-selectable power mode, 3rd-gear winter start mode and adaptive shift pressure	
Transmission (2)	—		—	
Transmission (3)	1st: 3.76, 2nd: 2.18, 3rd: 1.42, 4th: 1.00, 5th: 0.81, Rev: 3.76		1st: 3.77, 2nd: 2.25, 3rd: 1.40, 4th: 1.00, 5th: 0.81, Rev: 3.87	
Final drive ratios (1)	front/rear —/4.80	4.80/4.80	—/4.30	4.30/4.30
Final drive ratios (2)	—	1.00 high/2.05 low	—	1.00 high/2.05 low

	4-Cylinder 2WD	4-Cylinder 4WD ¹	V6 2WD	V6 4WD
Chassis	Box-section ladder-type with 8 crossmembers			
front	Independent double-wishbone, A-shaped lower arm, torsion bar springs with stabilizer bar and direct, double-acting gas-filled shock absorbers			
rear	5-link with coil springs, stabilizer bar and direct, double-acting gas-filled shock absorbers			
Brake system	Power-assisted 4-wheel Anti-lock Brake System with audible front-pad wear indicators			
Steering	Variable power-assisted rack and pinion			
front	11.0" ventilated disc	11.0" ventilated disc	11.0" ventilated disc	11.0" ventilated disc
rear	11.6" drum	12.3" ventilated disc	11.6" drum	12.3" ventilated disc
standard	6.5 JJ x 15" steel 7 JJ x 16" aluminum			
standard	P235/75R15 mud & snow all-season radials			
optional	P245/70R16 mud & snow all-season radials			

	4-Cylinder 2WD	4-Cylinder 4WD ¹	V6 2WD	V6 4WD
Capacity (soft top/hard top)	3329/3359 lb	3583/—	3484/3514 lb (A/T)	3668/—
Capacity (manual transmission)	—	—	—	3762 (hard top A/T)
Capacity (2)	2500 lb		4500 lb	
Capacity (3)	17.7 gal			

	4-Cylinder 2WD	4-Cylinder 4WD ¹	V6 2WD	V6 4WD
Estimated Fuel Economy ⁴	—	—	—	—
City mileage	21/24 mpg (M/T)	20/23 mpg (M/T)	17/21 mpg (A/T)	18/21 mpg (M/T)

	4-Cylinder 2WD	4-Cylinder 4WD ¹	V6 2WD	V6 4WD
Dimensions	—	—	—	—
front/rear	38.9/37.3 in			
front/rear	42.1/33.3 in			
width	front/rear 56.3/55.7 in			
height	front/rear 51.8/48.0 in			
volume	rear seat up/folded 21.0/62.4 cu ft			
height	rear seat up/folded 26.8/42.3 in			

	4-Cylinder 2WD	4-Cylinder 4WD ¹	V6 2WD	V6 4WD
Dimensions	96.9 in			
length	with 15" tailgate-mounted spare 167.8 in			
length	with 16" tailgate-mounted spare 168.0 in			
width	without fender flares 70.4 in			
width	with fender flares 71.4 in			
height	with 15" wheels 66.6 in			
height	with 16" wheels 67.0 in			



Amigo V6 4WD



Amigo V6 2WD



Amigo 2WD



Amigo V6 4WD



Amigo 4WD



Amigo 2WD

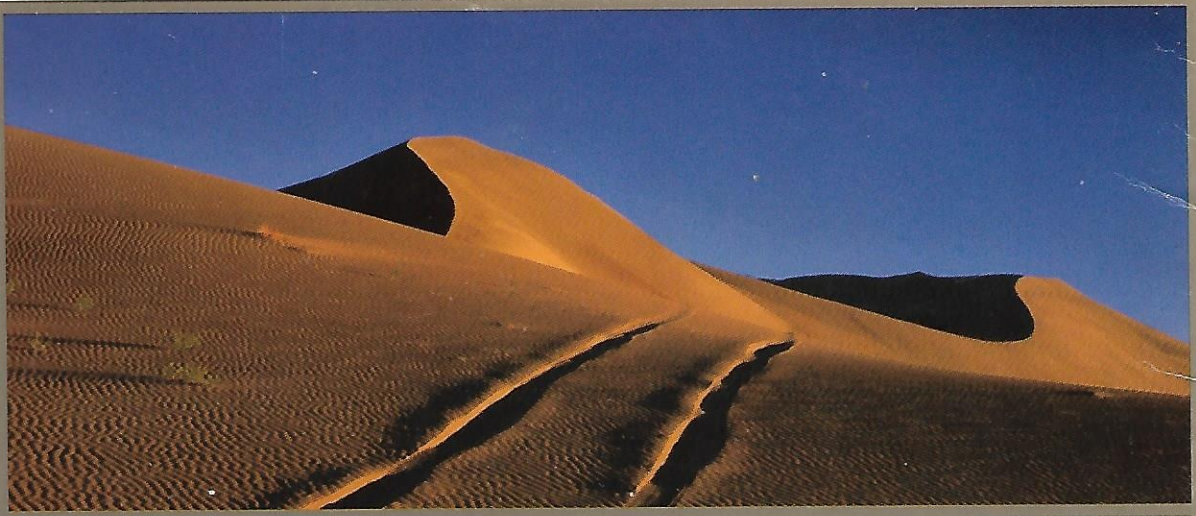
accessorize



Tune up your tunes with a 6-speaker premium AM/FM stereo/cassette player (top), part of the Preferred Equipment Package optional on the Amigo V6. Then you can add the in-dash 6-disc CD player that lets you feed discs right into the dash.

Remember to wear your seat belts. Air bags are a supplemental restraint whose effectiveness varies with speed, conditions and angle of impact. See your owner's manual for complete details.

NO



SHORT

WARRANTIES

Be confident in the Amigo. (With over 80 years of experience behind it, wouldn't you be?) We back it with one of the longest basic warranties in its class—36 months/50,000 miles. You can get an extended service contract with the Isuzu Protection Plan. You can also opt for a prepaid maintenance program. Of course, reliability won't help if you run out of gas, get a flat tire or lock yourself out. But we will, with 24-hour Roadside Assistance for the first five years or 60,000 miles. (Ask any of our nearly 600 dealers for the details.) Once you buy a new Amigo, our owner 800 line can answer any questions

www.isuzu.com

ISUZU

Go farther.