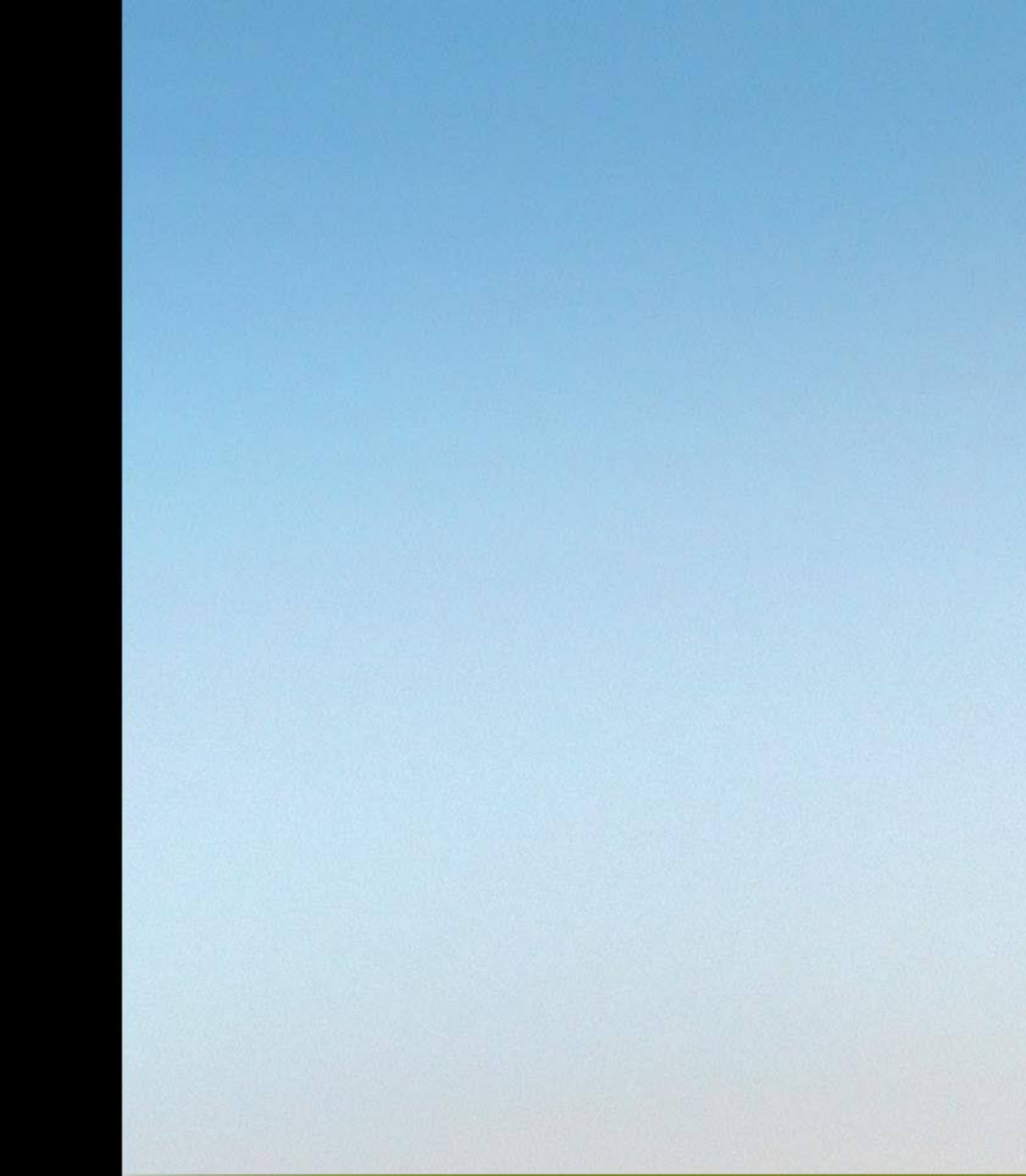




E Q U A T O R

S U Z U K I 2 0 1 1

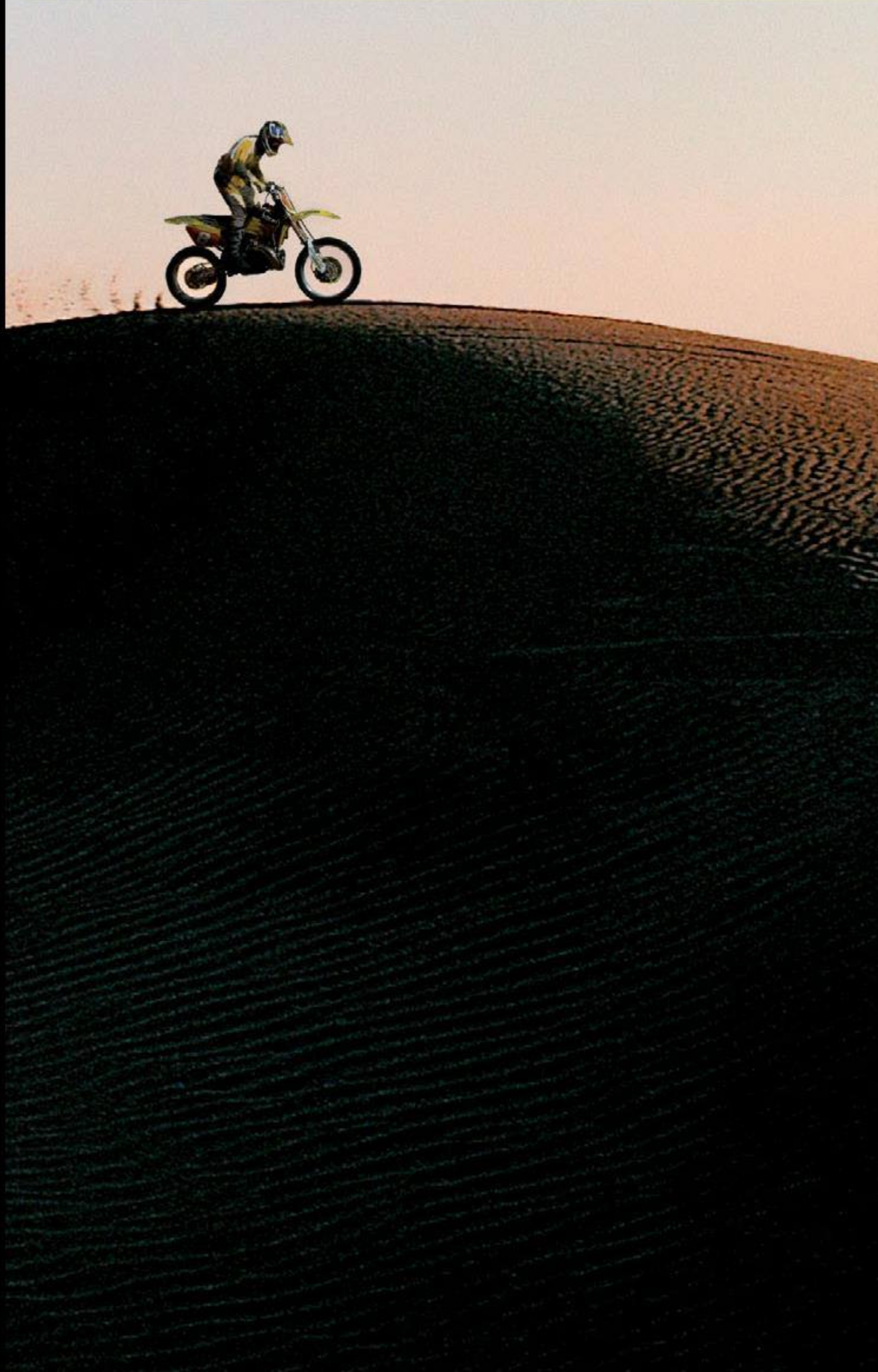




TRAVEL LIGHT



LIVE FULLY



PERFORMANCE

4WD

FEATURES

SPECS



HAUL MORE.  
 TOW MORE.  
 STOW MORE.  
 TOO MANY MORES?  
 NO WAY.

DO MORE



**EQUATOR RMZ-4 SPORT PACKAGE**  
 Shown in Red River Metallic with accessories

PERFORMANCE

4WD

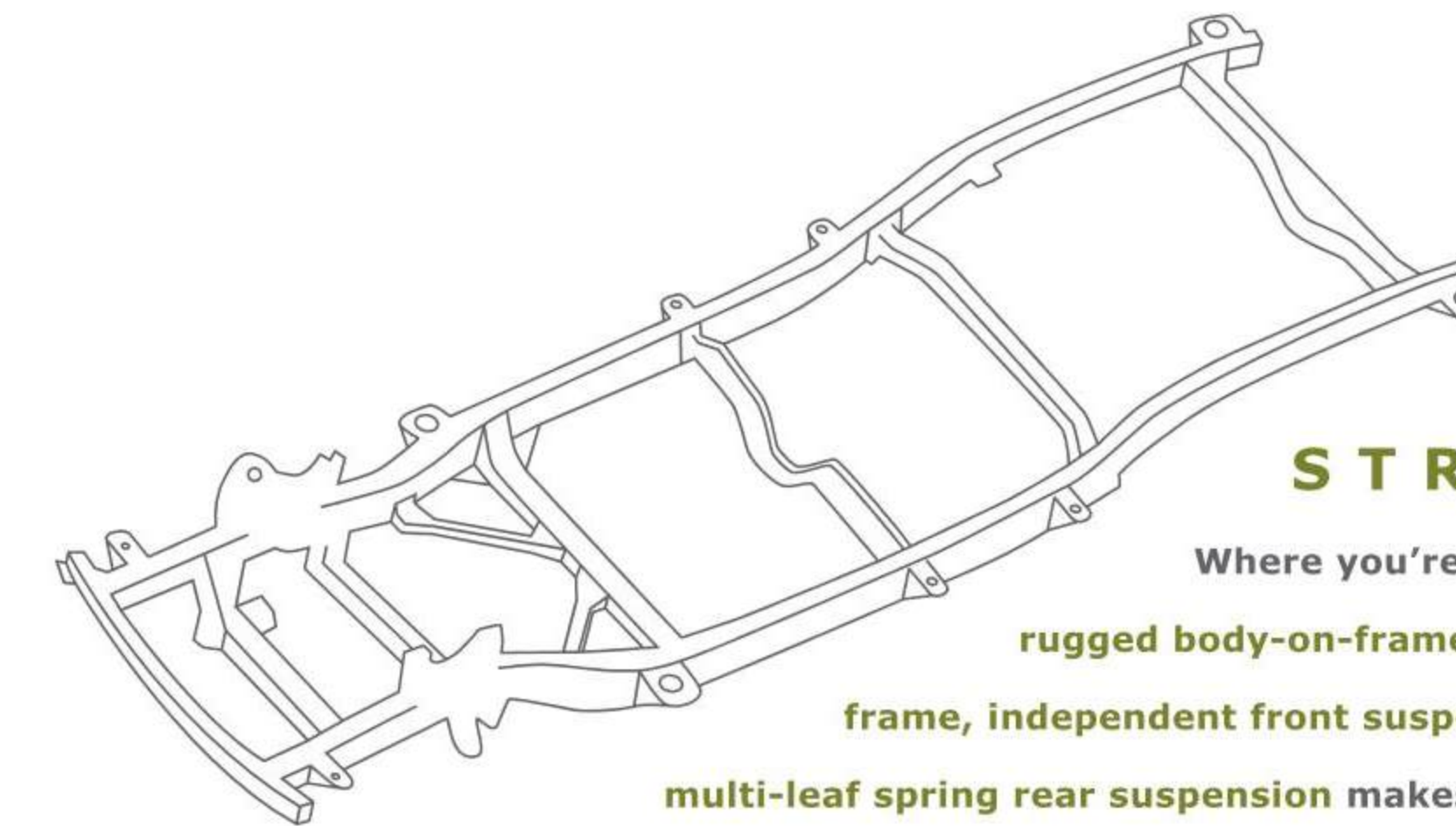
FEATURES

SPECS



## GRIP

It's you or the ramp. Kick it, and Equator's available 4-Wheel Active Limited Slip Traction Control puts you over the top. No spins. Wheels with traction get the power.



## STRENGTH

Where you're taking it, Equator's got to be tough. The rugged body-on-frame construction with fully boxed ladder frame, independent front suspension with stabilizer bar and overslung multi-leaf spring rear suspension makes it solid and keeps the ride smooth.



## TOP CONTENDER

VEHICLE	ENGINE	HORSEPOWER	TORQUE	MAXIMUM TOWING CAPACITY
Suzuki® Equator®	4.0-liter DOHC V6	261-hp	281 lb-ft	6,300 lbs
Honda Ridgeline®	3.5-liter SOHC V6	250-hp	247 lb-ft	5,000 lbs
Toyota Tacoma®	4.0-liter DOHC V6	236-hp	266 lb-ft	6,500 lbs
Chevrolet Colorado®	3.7-liter DOHC 5-cylinder	242-hp	242 lb-ft	5,500 lbs



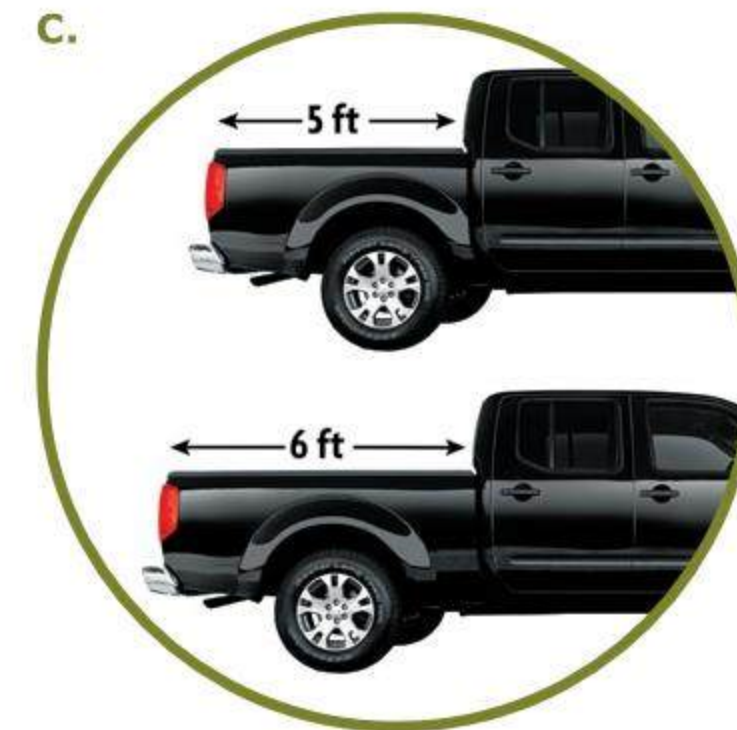
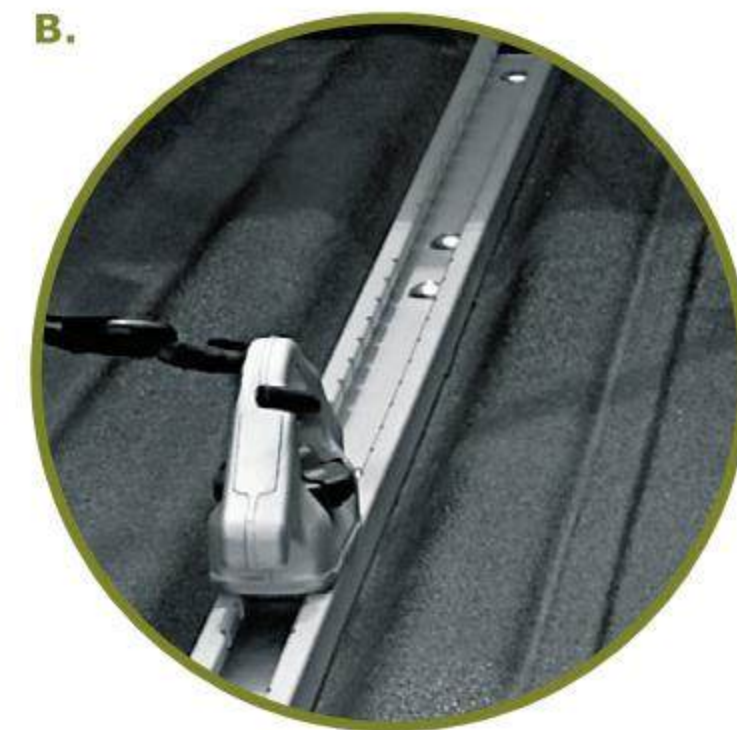
## 6,300 POUNDS

With this towing capacity, there's not a toy you'll have to leave behind. The standard front and rear limited slip on 4x4 models gives you the ability to get up slippery ramps.

## TOWING HAULING

## LEGENDARY

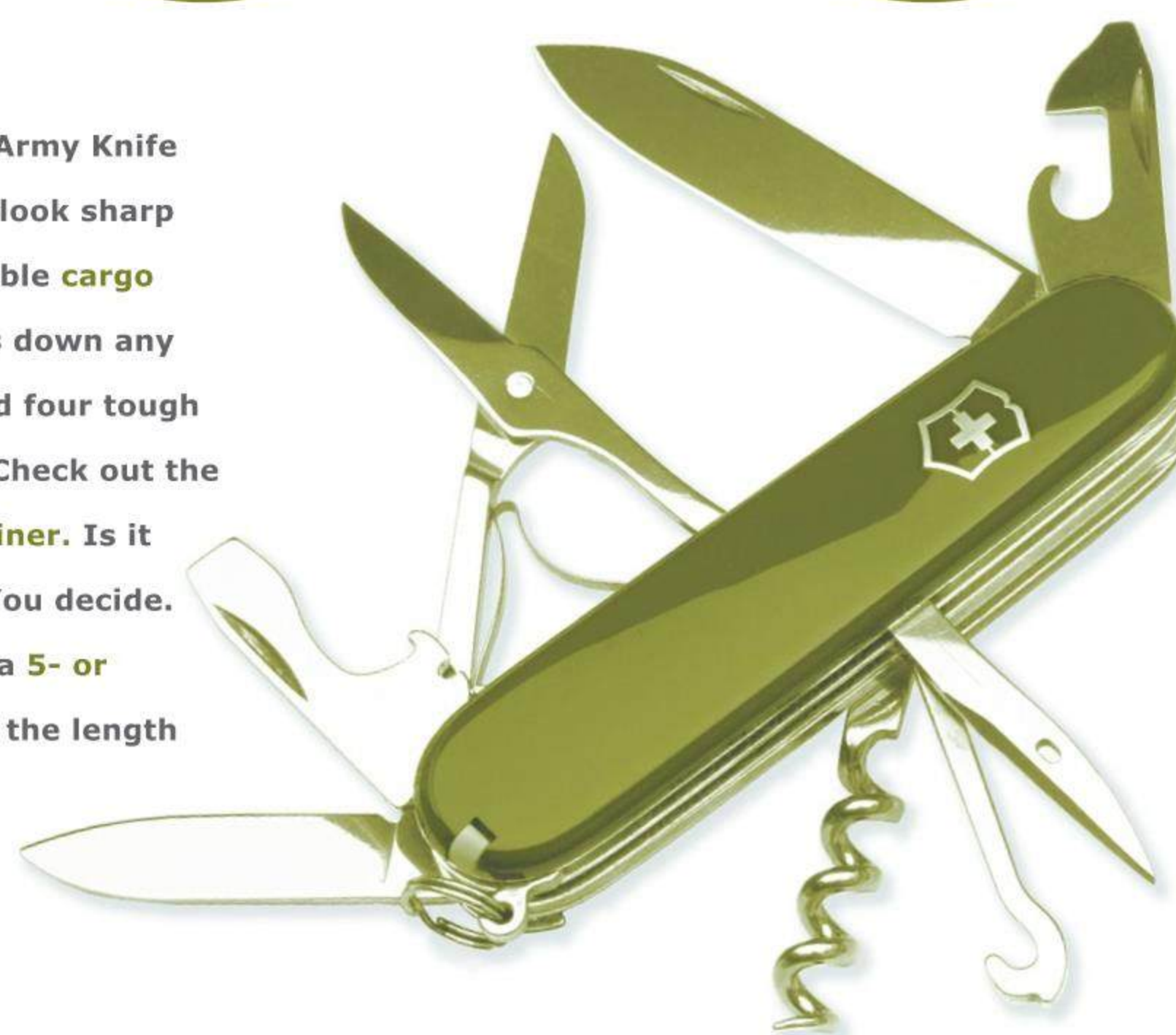
Got the Equator RMZ-4? Load it up with the Suzuki RM-Z450 motorcycle, a legend in the motocross world. Now there's not a track you can't take on.



## ADAPTABLE

Think utility. Follow the Swiss Army Knife mantra: Do it all. Fit it all. And look sharp while you're at it. **A.** The available cargo tie-down system securely locks down any payload using five channels and four tough movable/removable cleats. **B.** Check out the factory-installed spray-on bedliner. Is it body armor or cool detailing? You decide. **C.** Trick out the Crew Cab with a 5- or 6-foot bed, whichever matches the length you'll go to for fun.

Swiss Army is a trademark of Victorinox AG and Wenger SA. Used by permission.



## WARRIOR

Tim is a dirt bike master, hauling his bike every weekend to one track or another, hitting the most challenging obstacle circuits. With Equator, he can have just as much fun getting there and no worries of going OTB (over the bars).



## POWER

CAUTION. KEEP YOUR HANDS IN THE VEHICLE AS YOU PASS THE COMPETITION. IT'S NOT GOING TO BE PRETTY — FOR THEM. THE 4.0-LITER DOHC V6 ENGINE CHURNS OUT A SWEET 261-HP WITH 281 LB-FT OF TAKE-CHARGE TORQUE. AND CHECK OUT THIS MECHANICAL BLING: ALLOY BLOCK WITH CAST-IRON CYLINDER LINERS, FORGED STEEL CRANKSHAFT, MICROFINISHED CRANKSHAFT AND CAMSHAFTS, TEFLON®-COATED PISTONS AND VARIABLE VALVE TIMING (VVT).

# POWER



AVAILABLE FEATURES

- TOUCHSCREEN
- GPS NAVIGATION
- FOLD-FLAT FRONT PASSENGER SEAT

LOCKED AND LOADED

- HIGH-PERFORMANCE ROCKFORD FOSGATE® AUDIO SYSTEM WITH SUBWOOFER
- DUAL GLOVE BOX
- REAR UNDER-SEAT STORAGE

EQUATOR RMZ-4 SPORT PACKAGE  
Shown in Graphite interior

## TRACTION



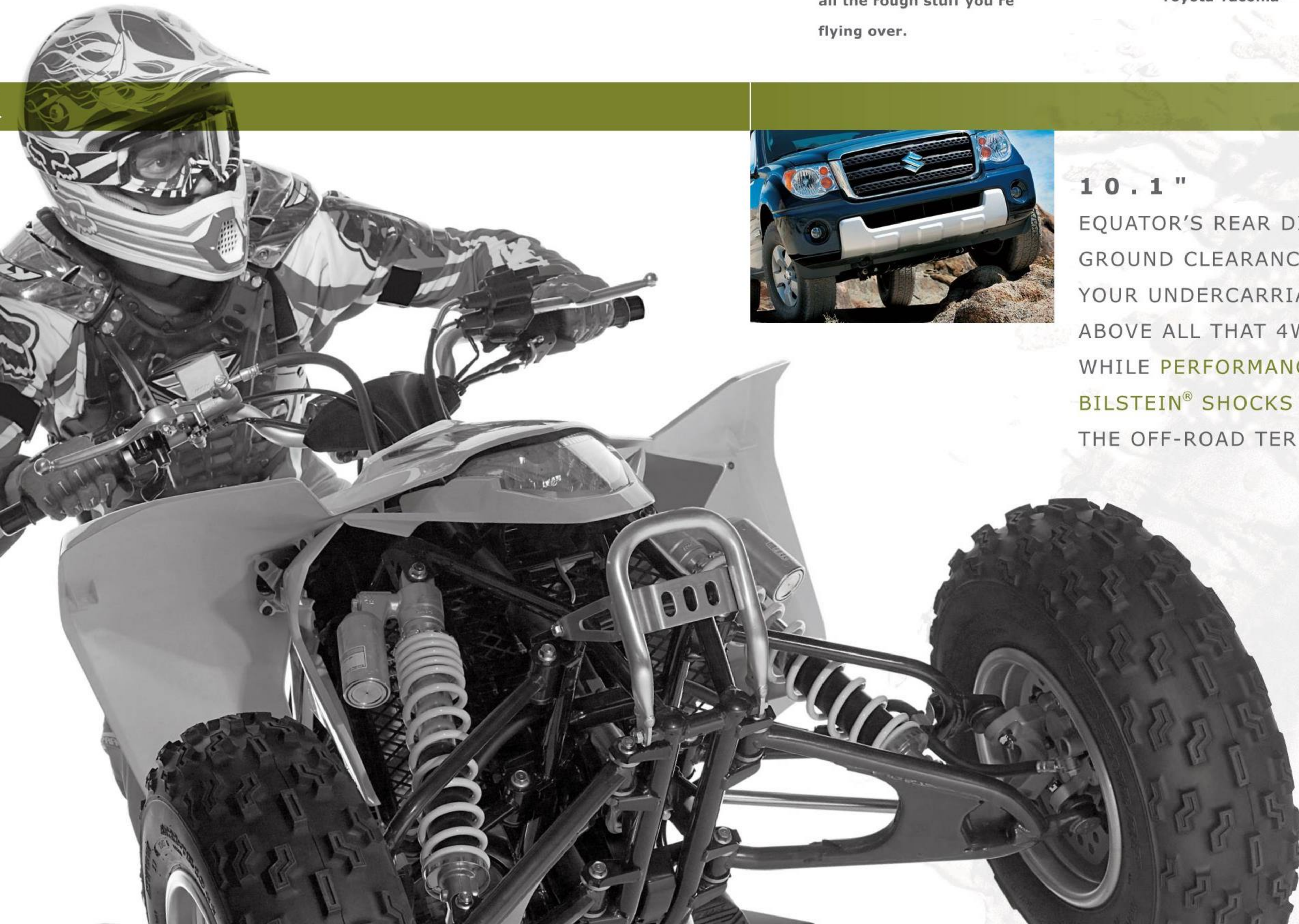
**2WD** — you can't beat it for most driving conditions. It provides smooth on-road performance and optimal fuel economy.



**4WD High** maximizes your traction on mud, snow or rough roads by distributing the engine's power to all four wheels.



**4WD Low** provides optimal low-end traction to master the toughest off-road conditions you take on.



## AGILE

Kite surfing vs. 4-wheeling. The same dynamics apply. **Power. Muscle. Split-second control over rough terrain.** A wicked fascination for a challenge.

## OFF-ROAD 4X4 READY

4X4 VEHICLE	HILL HOLD CONTROL & HILL DESCENT CONTROL	ELECTRONIC REAR LOCKING DIFFERENTIAL	ACTIVE LIMITED SLIP TRACTION CONTROL	2-SPEED TRANSFER CASE WITH LOW RANGE
<b>Suzuki Equator</b>	Standard	Standard	Standard	Standard
<b>Honda Ridgeline®</b>	Not Available	Not Available	Available	Not Available
<b>Ford Ranger®</b>	Not Available	Not Available	Not Available	Standard
<b>Chevrolet Colorado®</b>	Not Available	Not Available	Not Available	Standard
<b>Dodge Dakota®</b>	Not Available	Not Available	Not Available	Standard
<b>Toyota Tacoma®</b>	Standard	Standard	Not Available	Standard

## ARMORED

You're locked into 4WD Low, scrambling over every crag and divot. You're totally in the moment. You can be, because the available **skid plate** is shielding you from all the rough stuff you're flying over.

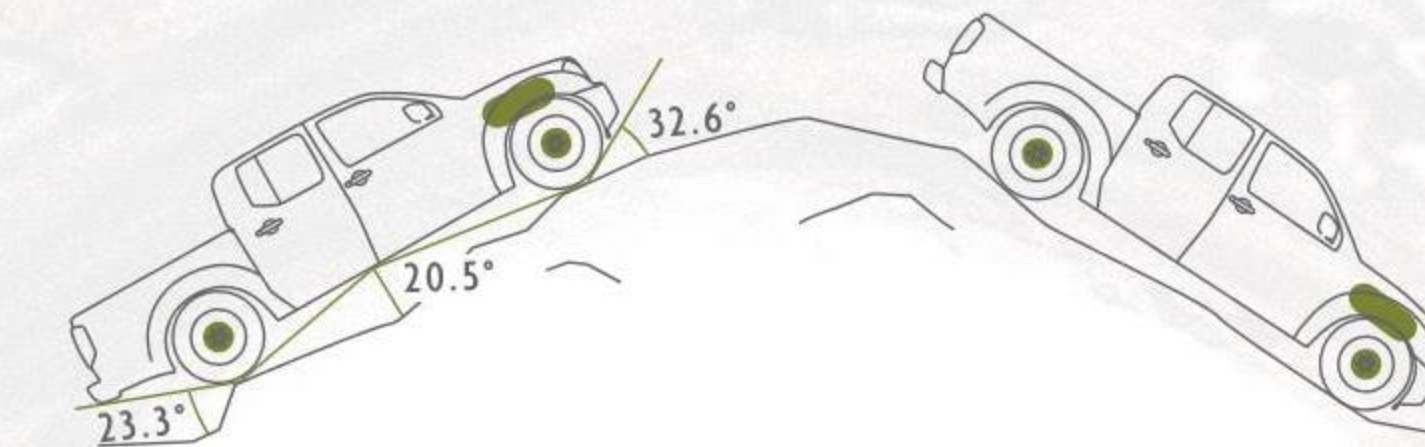


## 10.1"

EQUATOR'S REAR DIFFERENTIAL GROUND CLEARANCE HELPS KEEP YOUR UNDERCARRIAGE WELL ABOVE ALL THAT 4WD ACTION, WHILE PERFORMANCE-TUNED **BILSTEIN® SHOCKS** HELP ABSORB THE OFF-ROAD TERRAIN.

## CONTROL

The available **Vehicle Dynamic Control (VDC)**<sup>1</sup> constantly monitors Equator's trajectory and the driver's steering input to detect skidding motion or loss of traction, then automatically adjusts throttle input and brake pressure to help maintain directional control.



## UP & DOWN

What's off-roading without crazy roller coaster elevations? Keep yourself in control with the available **Hill Hold Control (HHC)** and **Hill Descent Control (HDC)**. If you stop on an incline, **HHC** helps keep you from rolling backward. **HDC** helps give you a controlled descent in rough terrain without touching the brakes — you're free to mind the wheel.

## OFF-ROAD CONTROL

## SHIFT

Marchelino throttles his ATV over every obstacle with a twist of the wrist. Likewise, Equator's shift-on-the-fly 4WD easily adjusts to give you the traction you need to power through every terrain and road condition.



## 20X

Equator's **Electronic Control Unit (ECU)** has 20 times the computing power of the lunar landing module. Ponder that on your next terrestrial off-road trip.





**EQUATOR RMZ-4 SPORT PACKAGE**  
Shown in Graphite interior with optional equipment

PERFORMANCE

4WD

FEATURES

SPECS

EQUATOR HITS  
THE ROAD  
FEATURE-PACKED,  
ROAD-TESTED AND  
PRIMED FOR ACTION.

ROUGH AND READY



**EQUATOR RMZ-4 SPORT PACKAGE**  
Shown in Marine Blue Metallic

PERFORMANCE

4WD

FEATURES

SPECS





## WEEKEND WARRIOR

At the Utah National Park or your favorite hangout, Equator's get in, have fun and get out attitude makes it easy to follow the dictates of your inner adventurer.



## HOT DNA

Marchelino's snowmobile is powered by a Suzuki engine. Suzuki-powered machines are everywhere. And now there's a Suzuki truck that can haul them around for you.

## CHOICE

Easy decision. Match your cab size to the number of people who regularly ride with you. Lone wolves may fit best with the **Extended Cab**. If you like to share your ride, then you'll probably want the added seating of the **Crew Cab**.



## VERSATILE

The Crew Cab's 60/40 rear seat does an acrobatic flip down creating a hauling or work surface, and then it flips up for additional in-cab storage.



## COMFORT STORAGE

### FEATURE - PACKED

VEHICLE	SIDE-CURTAIN AIR BAGS	FOLD-FLAT PASSENGER SEAT	REAR UNDER-SEAT STORAGE	DUAL GLOVE BOX
<b>Suzuki Equator</b>	<b>Standard</b>	<b>Standard</b>	<b>Standard</b>	<b>Standard</b>
Honda Ridgeline®	Standard	Not Available	Standard	Not Available
Toyota Tacoma®	Standard	Standard	Standard	Not Available
Dodge Dakota®	Available	Not Available	Available	Not Available



So you're tough. But even you have to respect the assurance dual-stage front, side and side-curtain air bags give.



Double your dash storage with the dual glove box. It combines access with utility to keep you organized. Or close to it.



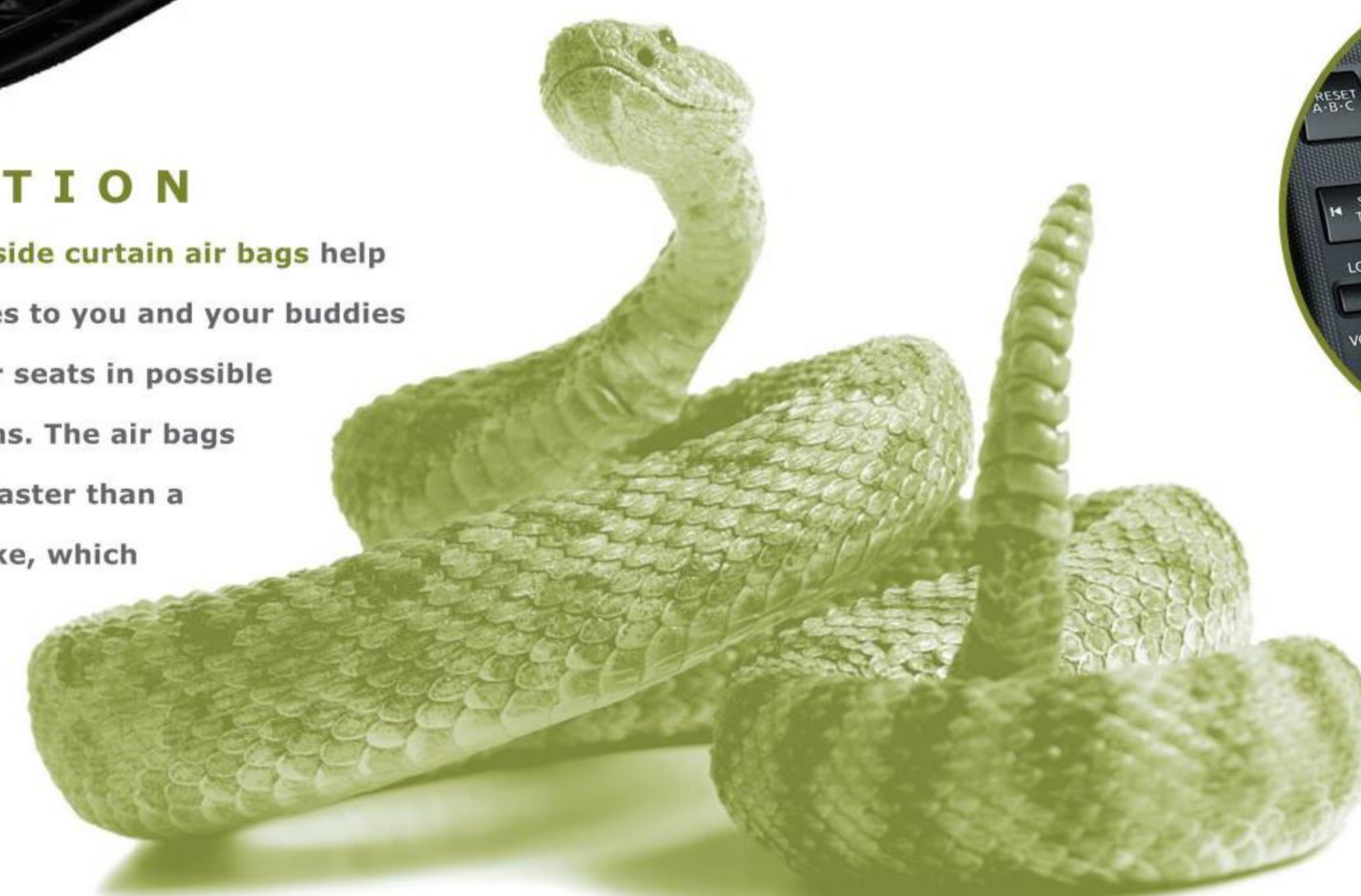
Leather-wrapped steering wheel with integrated audio controls is available to keep your eyes on the road and your eardrums on vibrate.



The available Suzuki TRIP® contains over 6 million standard points of interests, such as hotels, restaurants and the nearest gas stations.

## PROTECTION

Equator's standard side curtain air bags help prevent head injuries to you and your buddies in the front and rear seats in possible side-impact collisions. The air bags deploy and deflate faster than a rattlesnake can strike, which is just a blur.



## SOUNDS

Hit the streets backed by your multi-gig MP3 playlists pumping out of the available **Rockford Fosgate® 9-speaker audio system**. A 6-disc in-dash CD player plays MP3 and WMA™ audio files. It's XM® Satellite Radio ready and allows for direct connection with your iPod®.



**HANDS-FREE**  
THE AVAILABLE **BLUETOOTH® HANDS-FREE PHONE SYSTEM** KEEPS YOUR HANDS ON THE WHEEL AND CONNECTS YOU TO THE LATEST TECHNOLOGY.



**EQUATOR RMZ-4**  
Shown in Marine Blue Metallic with accessories

PERFORMANCE

4WD

FEATURES

SPECS



EQUATOR RMZ-4 CONCEPT

100,000-MILE/7-YEAR

POWERTRAIN

LIMITED WARRANTY

FULLY TRANSFERABLE

AMERICA'S #1 WARRANTY

NO DEDUCTIBLE

24-HOUR ROADSIDE

ASSISTANCE

See [suzukiauto.com](http://suzukiauto.com) or your local Dealer for more information on warranty highlights or the New Vehicle Warranty Information booklet for full warranty disclosure.

PERFORMANCE

4WD

FEATURES

SPECS



SUZUKI FAST FACTS:

MAKER OF THE NUMBER-1-SELLING CAR IN JAPAN SIX YEARS IN A ROW<sup>9</sup>.

SECOND LARGEST CAR MANUFACTURER IN JAPAN<sup>9</sup>.

HAS BETTER RESALE VALUE THAN PORSCHE<sup>®</sup>, VOLVO<sup>®</sup> AND MERCEDES-BENZ<sup>®10</sup>.

MAKER OF KIZASHI, HIGHEST SATISFACTION OF ANY 2010 CAR.

AUTOPACIFIC 2010 VEHICLE SATISFACTION AWARD<sup>11</sup>.



KIZASHI



SX4  
CROSSOVER



SX4  
SPORTBACK



SX4  
SPORT



GRAND  
VITARA



EQUATOR



SUZUKIAUTO.COM