



K I Z A S H I

S U Z U K I 2 0 1 1





KIZASHI: SOMETHING GREAT IS COMING

T R A V E L L I G H T



L I V E F U L L Y



STYLE THAT MOVES YOUR SENSES — AND YOUR PULSE

REFINED

STRENGTH



KIZASHI SPORT GTS
Shown in Platinum Silver Metallic

HERITAGE

PERFORMANCE

FEATURES

SAFETY

AWD

SPECS



SHORTLY AFTER ITS 2010 LAUNCH, AUTOPACIFIC RECOGNIZED

KIZASHI® AS ACHIEVING **THE HIGHEST OVERALL**

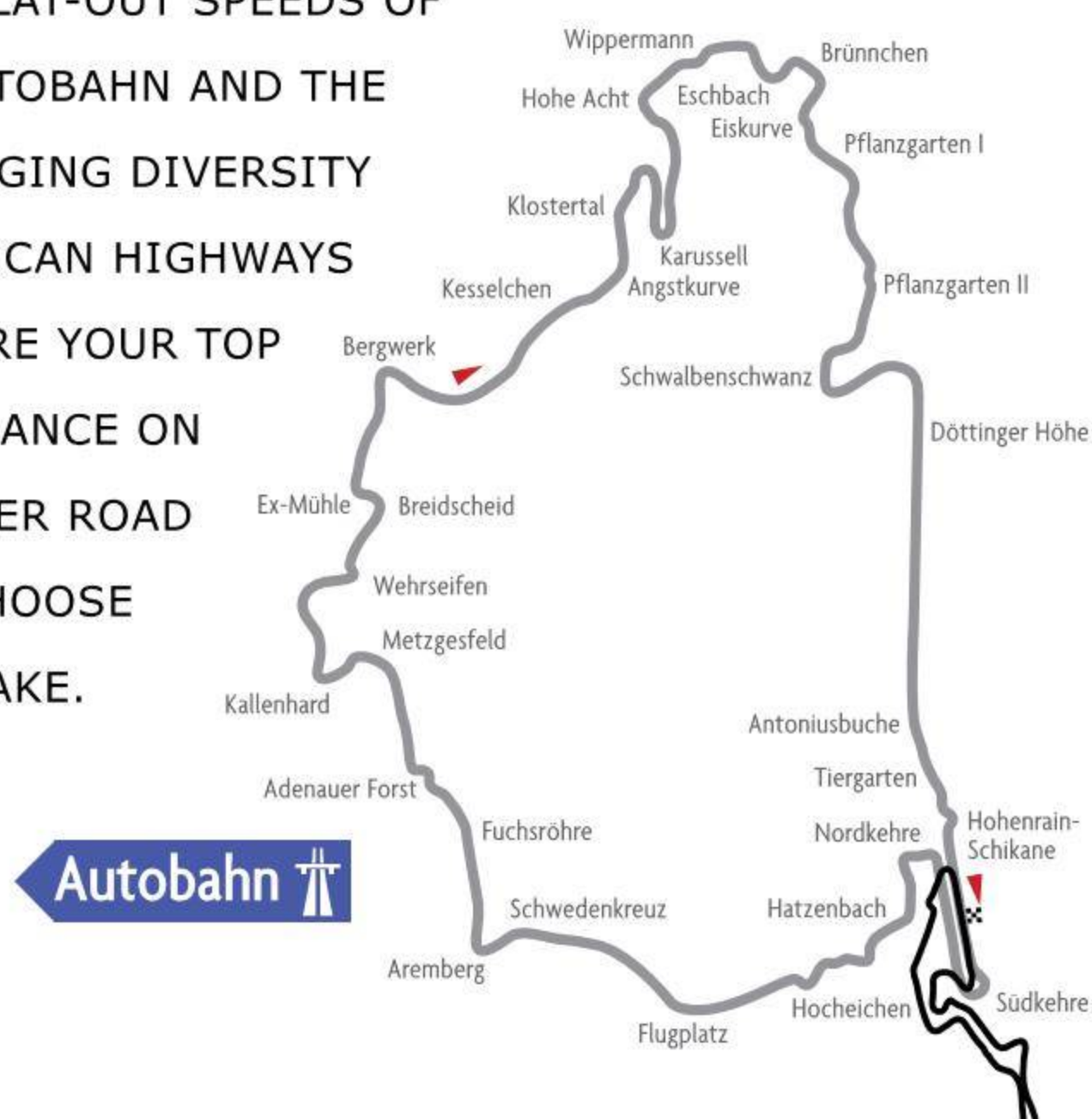
SATISFACTION OF ANY 2010 VEHICLE — CAR OR TRUCK — IN AMERICA¹. AND FOR 2011, WE'VE ONLY MADE IT BETTER.



HONED ON THE ROADS OF EUROPE AND THE U.S., KIZASHI MASTERED THE JARRING CURVES OF NÜRBURGRING,



THE FLAT-OUT SPEEDS OF THE AUTOBAHN AND THE CHALLENGING DIVERSITY OF AMERICAN HIGHWAYS TO ENSURE YOUR TOP PERFORMANCE ON WHATEVER ROAD YOU CHOOSE TO TAKE.



SUZUKI LEADS WITH THE #1 CAR IN JAPAN

FRONT RUNNER

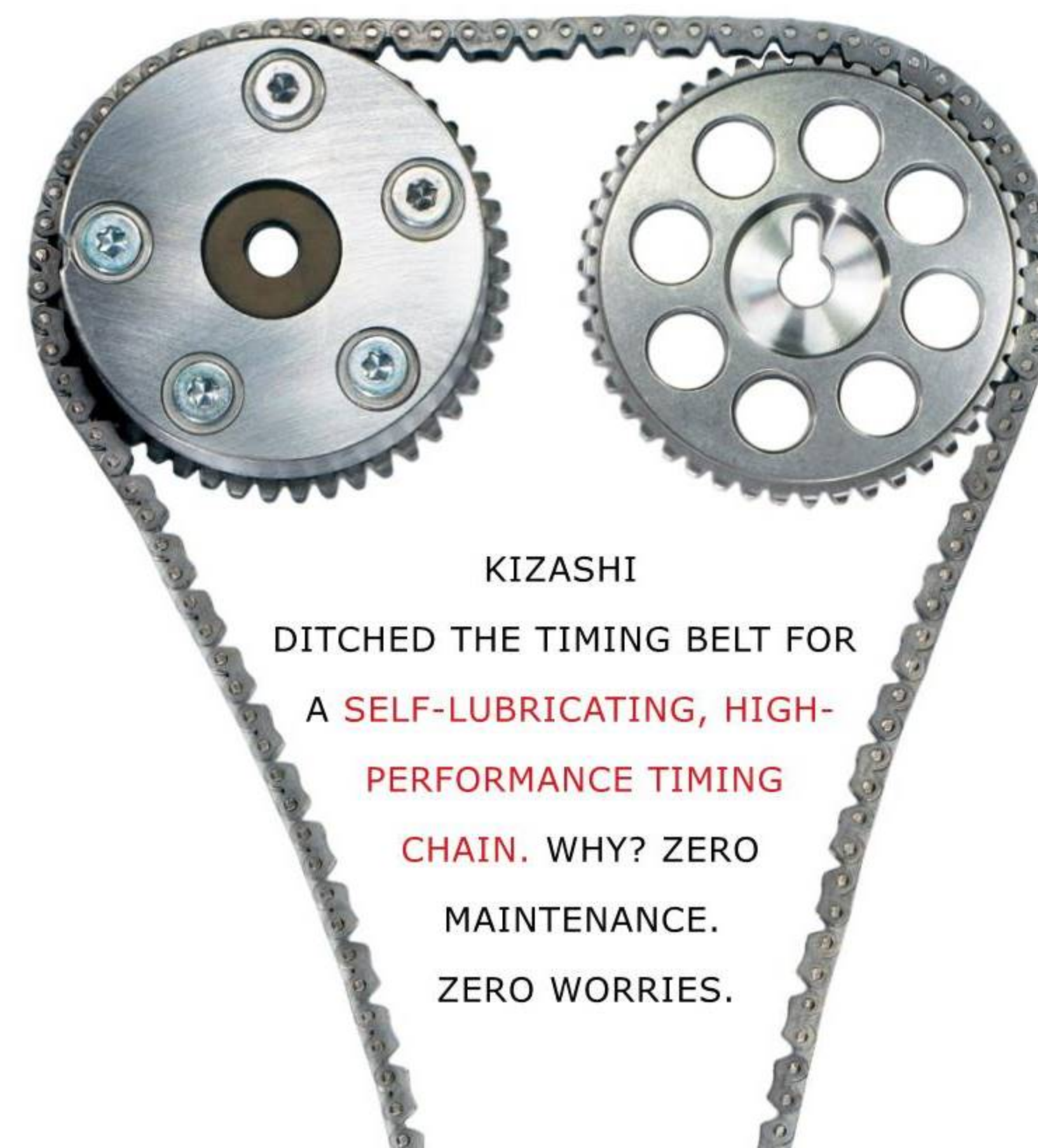


HIGH MARKS

With over 50 years of experience creating world-class machines that are high on performance and style, Suzuki® launched Kizashi, engineered to perfection and tested in the extreme.



LIKE THE HAYABUSA², UNSURPASSED IN PERFORMANCE, EVERY FIBER OF KIZASHI IS INFUSED WITH SUZUKI'S **TIME-HONORED, BOLD DNA FOR ENGINEERING SUPREMACY** — A NEW WARRIOR DESTINED TO UPHOLD AN ENVIABLE TRADITION OF PERFORMANCE.



KIZASHI DITCHED THE TIMING BELT FOR A **SELF-LUBRICATING, HIGH-PERFORMANCE TIMING CHAIN**. WHY? ZERO MAINTENANCE. ZERO WORRIES.



TO THE SUN-BAKED DESERTS,



FROM THE FRIGID ARCTIC

NO CLIMATE WAS LEFT UNCONQUERED.

AROUND-THE-WORLD DURABILITY TESTING



HERITAGE

PERFORMANCE

FEATURES

SAFETY

AWD

SPECS



HERITAGE

PERFORMANCE

FEATURES

SAFETY

AWD

SPECS

KIZASHI SE WITH OPTIONAL EQUIPMENT
Shown in Vivid Red



CHURNS UP A SUBLIME 185 HORSEPOWER (MT)

P O W E R F U L

E X C I T E M E N T



KIZASHI SPORT GTS
Shown in Vivid Red

HERITAGE

PERFORMANCE

FEATURES

SAFETY

AWD

SPECS



IT'S A YIN-YANG. KIZASHI'S IMPRESSIVE POWER AND PERFORMANCE ARE MATCHED BY THE EQUALLY COMMANDING AKEBONO® BRAKE COMPONENTS — THE SAME BRAND THAT BRINGS JAPAN'S SCREAMING BULLET TRAINS TO A SAFE AND CONTROLLED STOP.



FORGED CRANKSHAFT AND STEEL-LINED CYLINDERS

ONE OF THE MOST **POWERFUL** STANDARD ENGINES IN ITS CLASS **185-HP³**

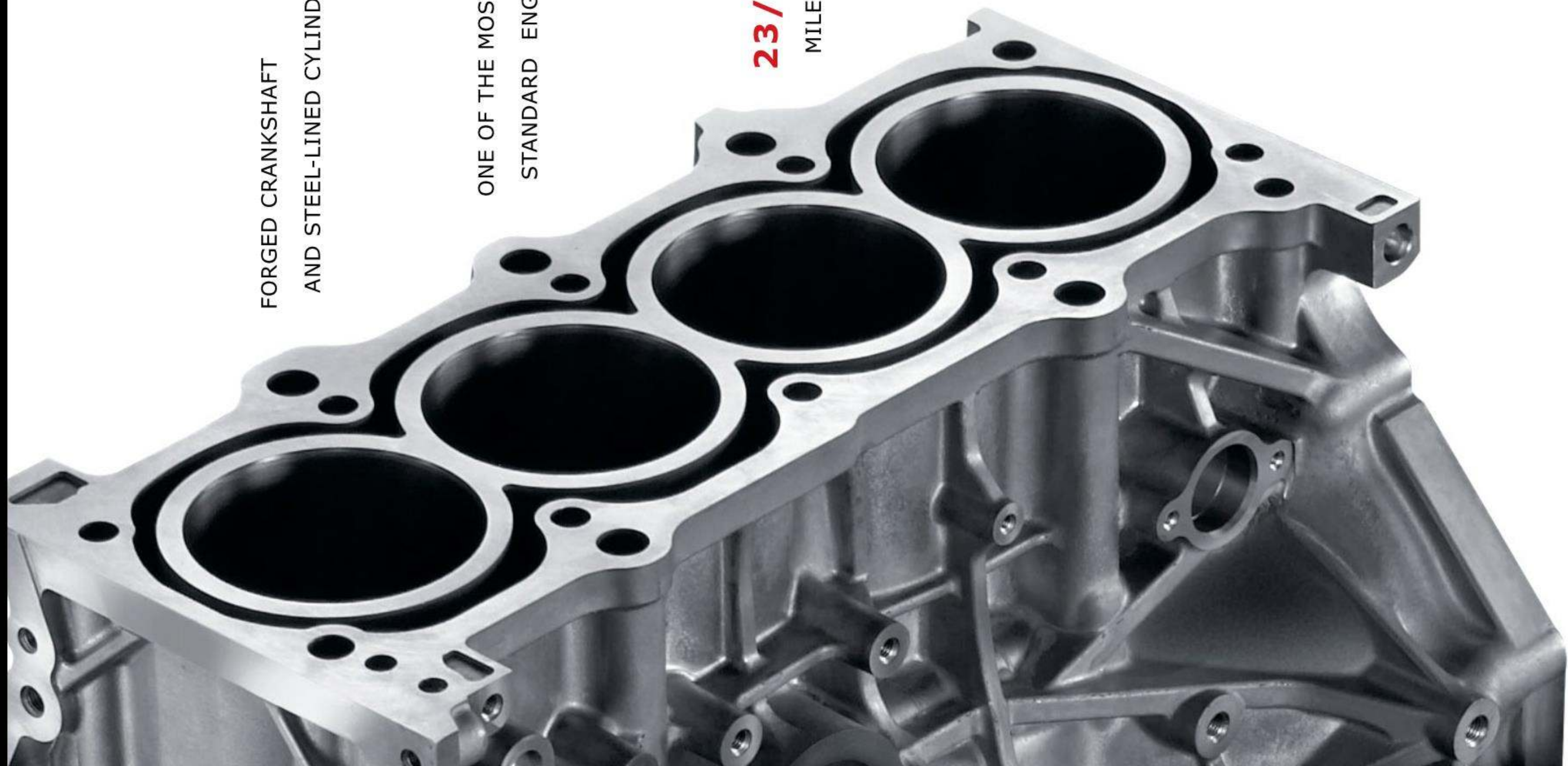
23/31 MPG BASED ON EPA

MILEAGE ESTIMATES FOR KIZASHI CVT FWD4

ADVANCED **VARIABLE INDUCTION SYSTEM (VIS)** FOR MORE USABLE TORQUE AT A WIDE RANGE OF SPEEDS



TORSIONAL HIGH-RIGIDITY UNIBODY STRUCTURE HELPS ENSURE A SUPERIOR BLEND OF SPORTY HANDLING, QUIETNESS AND RIDE COMFORT THAT LEAVES EVERY OTHER SPORTS MODEL IN THE DUST.



STRONG CREDENTIALS AND FRESH INNOVATION

P O T E N T



POWER ACCOLADES

"Handily beats the dynamics of almost everything else in its price and/or size class."

- Automobile Magazine

Automobile

"At the end of the day, we walked away thinking that the Kizashi is the best handling and most composed FWD sedan we've driven."

- AutoWeek Magazine



THE MULTI-LINK REAR SUSPENSION, A FLOATING SUBFRAME AND A HIGH-RIGIDITY UNIBODY STRUCTURE HELP DELIVER THE PRECISE HANDLING PERFORMANCE AND HELP REDUCE

V I B R A T I O N



VEHICLE	STANDARD HP	SKIDPAD	SLALOM	BRAKING (60-0)
KIZASHI 2.4L	185	1ST (0.87G)	1ST (48.9 MPH)	1ST (123 FT)
ACCORD® 2.4L	177	2ND TIE	3RD	5TH
ALTIMA® 2.5L	175	4TH	2ND	2ND
CAMRY® 2.5L	169	5TH	5TH	4TH
MAZDA6® 2.5L	170	2ND TIE	4TH	3RD

Performance data from Popular Mechanics, April 2010³.



THE AVAILABLE **18-INCH LIGHTWEIGHT ALUMINUM ALLOY WHEELS WITH HIGH-PERFORMANCE DUNLOP® 235/45-18 TIRES** PROVIDE RESPONSIVE HANDLING AND FEEL WITH EXCELLENT ROAD TRACTION.



HERITAGE

PERFORMANCE

FEATURES

SAFETY

AWD

SPECS



HERITAGE

PERFORMANCE

FEATURES

SAFETY

AWD

SPECS

KIZASHI SPORT SLS
Shown in Black interior



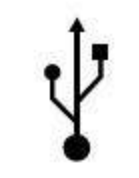
AVAILABLE ROCKFORD FOSGATE® PREMIUM HIGH-PERFORMANCE AUDIO SYSTEM



DIGITAL SOUND PROCESSOR



iPOD®5 COMPATIBLE CONNECTION



USB® & WIRELESS AUDIO STREAMING



BLUETOOTH®5 HANDS-FREE CALLING

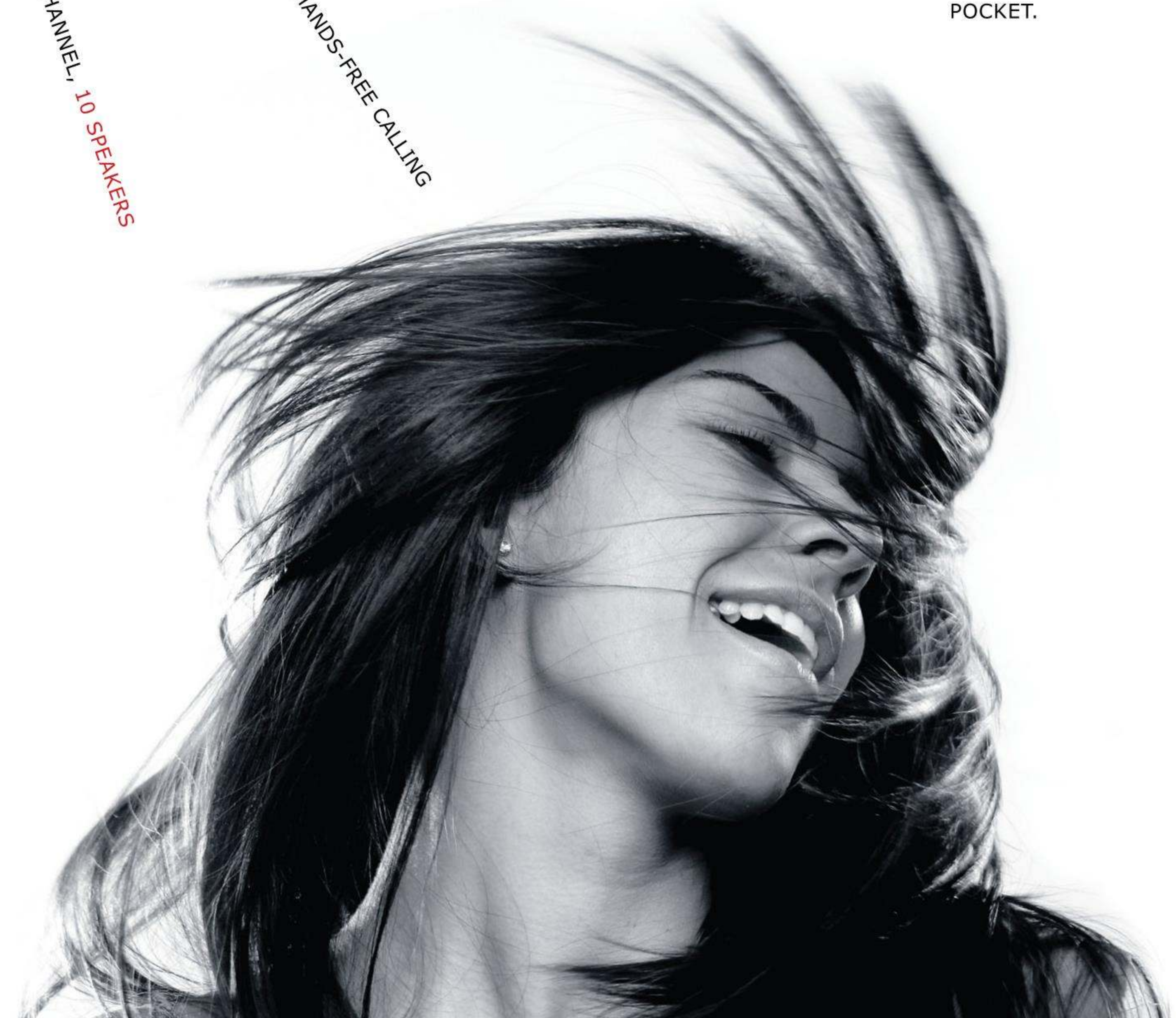


8-CHANNEL, 10 SPEAKERS

POWERED BY A 425-WATT AMP



THE STANDARD SMARTPASS® KEYLESS PUSH-BUTTON IGNITION WITH REMOTE ENTRY MEANS YOUR KEYS NEVER HAVE TO LEAVE YOUR POCKET.



THE LOOK, FEEL AND SOUND OF QUALITY

LUXURY



TOUCH OF CLASS

Kizashi marks a clear departure from traditional sedans with optimized sound reduction insulation and structure, high-quality finishes and materials, felt-covered glove compartment, door courtesy and front footwell lights.

WHAT'S IMPRESSIVE HERE IS THE HIGH-QUALITY FEEL OF THE INTERIOR — THE MATERIALS USED ON THE DASHBOARD AND DOOR PANELS ARE FIRST-RATE, AND ITS OVERALL LOOK CERTAINLY CLIMBS A FEW RUNGS ON THE LADDER OF SOPHISTICATION.

ROAD & TRACK December 2009



STANDARD DUAL-ZONE TEMPERATURE CONTROLS LET YOU AND YOUR PASSENGER DEFINE PERSONAL PREFERENCES. A SALUTE TO THE NEW EQUALITY.

THE EXPERT TOUCH OF A LEADING ERGONOMIC SPECIALIST IS EVIDENT IN THE **STANDARD SPORT SEATS**

WITH AVAILABLE 10-WAY POWER DRIVER'S SEAT AND 3-POSITION MEMORY.

THE GENEROUS DIMENSIONS AND SPECIAL DENSITY FOAM HELP MINIMIZE DRIVER FATIGUE. CHOOSE HIGH-QUALITY LEATHER OR DELUXE DENSELY WOVEN FABRIC, EACH FINISHED WITH FRENCH SEAM DETAILING.



HERITAGE

PERFORMANCE

FEATURES

SAFETY

AWD

SPECS



HERITAGE

PERFORMANCE

FEATURES

SAFETY

AWD

SPECS

KIZASHI SPORT SLS
Shown in Black interior⁶



HERITAGE

PERFORMANCE

FEATURES

SAFETY

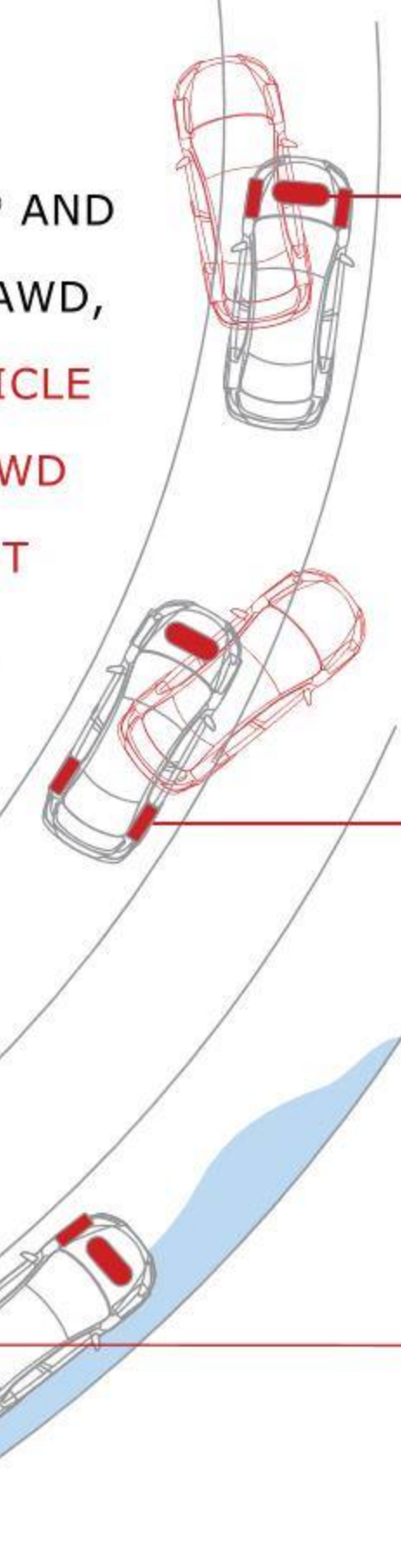
AWD

SPECS

KIZASHI SPORT GTS
Shown in Platinum Silver Metallic



SIMILAR TO NISSAN GT-R® AND PORSCHE'S NEW PANAMERA® AWD, KIZASHI'S INTELLIGENT VEHICLE STABILITY PROGRAM7 (I-VSP™) ON AWD MODELS INTEGRATES THE INTELLIGENT ALL-WHEEL DRIVE SYSTEM (I-AWD™) AND THE SOPHISTICATED ELECTRONIC STEERING SYSTEM TO HELP PROVIDE GREATER DRIVER CONTROL.



- OVERSTEER**
 - Detects rear-wheel skid
 - i-AWD transfers power to front wheels
 - Boosts steering assistance
- UNDERSTEER**
 - Detects front-wheel skid
 - i-AWD transfers power to rear wheels
- SPLIT SURFACE**
 - Detects low-left or right-side traction
 - Transfers power to high-traction wheels
 - Boosts steering assistance



AVAILABLE REAR-VISION CAMERA ON NAVIGATION SCREEN HELPS MAKE BACKING UP SAFER.



THE AVAILABLE **REAR SONAR PARKING ASSIST®** MONITORS THE DISTANCE BETWEEN YOU AND LARGE OBJECTS BEHIND YOU — SOUNDING AN ALERT IF YOU GET TOO CLOSE!

SECURITY THROUGH INTEGRATED PRECISION

SAFETY CENTRIC



SUZUKI'S PROPRIETARY **TOTAL EFFECTIVE CONTROL TECHNOLOGY (TECT™)** COCOONS PASSENGERS WITHIN A LIGHT, ENERGY-ABSORBING BODY COMBINED WITH A SUPER-STRONG, DEFORMATION-RESISTING CABIN STRUCTURE THAT ABSORBS AND DISPERSES CERTAIN IMPACT.

2014 READY

Kizashi is one of few cars compliant with the 2014 NHTSA requirements. It meets future safety standards, such as Side-Impact Pole Collision test, Side-Impact Barrier Collision test and upgraded Front Collision test, embodying safety ahead of its time.

VEHICLE	NHTSA 2010 FRONT RATING	NHTSA 2010 REAR RATINGS	REAR SIDE-IMPACT AIR BAGS	ALL-WHEEL DRIVE TRACTION
KIZASHI 2.4L	★★★★★	★★★★★	STANDARD	AVAILABLE
FUSION® 2.5L	★★★★★	★★★★	NOT AVAILABLE	NOT AVAILABLE
ALTIMA® 2.4L	★★★★★	★★★★	NOT AVAILABLE	NOT AVAILABLE
ACCORD® 2.4L	★★★★★	★★★	NOT AVAILABLE	NOT AVAILABLE
PASSAT CC® 2.0T	★★★★	★★★★	AVAILABLE	NOT AVAILABLE

NHTSA ESTIMATES THE LIKELIHOOD OF SERIOUS INJURY MAY DOUBLE BETWEEN 4-STAR AND 5-STAR FRONTAL OR SIDE CRASH RATINGS AND MAY QUADRUPLE BETWEEN 3-STAR AND 5-STAR RATINGS.

YOUR SAFETY IS OUR TOP CONCERN. KIZASHI BOASTS **EIGHT STANDARD AIR BAGS** — MORE THAN ANY COMPETITOR. WE'VE GOT YOU COVERED!



THE **STANDARD PROJECTOR BEAM HEADLAMPS** ARE ANYTHING BUT STANDARD. IN FACT, THEY THROW MORE LIGHT, MORE ACCURATELY THAN HALOGENS FOR ENHANCED SAFETY AND VISIBILITY IN ANY DRIVING ENVIRONMENT.



HERITAGE

PERFORMANCE

FEATURES

SAFETY

AWD

SPECS

KIZASHI SPORT SLS
Shown in Black interior

SUZUKI



OVER 40 YEARS OF INTENSE AWD DEVELOPMENT AND APPLIED DURABILITY BY SUZUKI PAY OFF IN **KIZASHI'S STANDOUT AWD SYSTEM.** A SUZUKI STRENGTH, UTILIZING A FAST-ACTING ELECTRONIC CLUTCH THAT MONITORS THROTTLE INPUT

AND STEERING ANGLE TO ANTICIPATE SLIPPAGE AND OPTIMIZE POWER DISTRIBUTION BEFORE YOU KNOW YOU NEED IT.

SUPERIOR CORNERING

Based on road conditions and steering wheel input, Kizashi's i-AWD system senses the turn and optimizes the torque distribution to the rear wheels for smooth, controlled cornering.

FEEDFORWARD CONTROL

This key i-AWD system feature adjusts the distribution of engine power going to the rear wheels in accordance with road conditions and driving style for maximum AWD performance and minimal fuel consumption.

WITH PEERLESS FINESSE, KIZASHI CARRIES OFF A STUNNING INDUSTRY COUP — COMBINING THE **TRACTION, SAFETY AND PERFORMANCE OF FULL-TIME AWD SYSTEMS** OF EXPENSIVE LUXURY VEHICLES WITH THE **FUEL EFFICIENCY OF ITS LESS POWERFUL, FWD COMPETITORS.** VOILÀ!



HIGH-PERFORMANCE AWD THAT WILL GRAB YOU AND THE ROAD

TR A C T I O N

AWD

OPTIMIZED

Befitting a high-end sports sedan, Kizashi's i-AWD system serves up top-performance and handling advantages in every weather and traction condition, while maximizing fuel economy.



USE THE **PASS-THROUGH** OPENING FOR STOWING SKIS. FOR MORE SPACE, ONE OF THE FOUR **60/40 SPLIT REAR SEATBACK** CONFIGURATIONS IS SURE TO ACCOMMODATE.

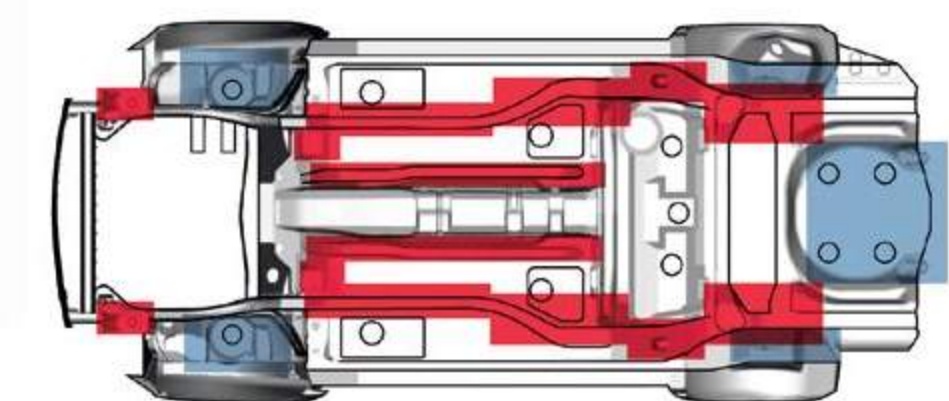


“ DRIVERS WILL FIND AN ENGAGING DRIVING EXPERIENCE HIGHLIGHTED BY A WELL-BALANCED CHASSIS AND AN ABUNDANCE OF GRIP AND STEERING. ”



February 2010

HIGHLY RUST-RESISTANT ZINC-ALLOY-PLATED STEEL MAKES UP 80 PERCENT OF THE BODY, KEEPING IT LOOKING GREAT AND ITS STRUCTURE UNCOMPROMISED FROM CORROSION.



FOR OPTIMUM CORROSION PROTECTION, ANTI-RUST WAX IS APPLIED TO THE INSIDE SURFACES AND SUSPENSION MOUNTINGS; SEALANT COATS THE UNDERFLOOR MOUNTS AND WHEEL WELLS; AND RESIN PANELS HELP SHIELD THE SIDE SILLS AND UNDERBODY COMPONENTS FROM STONES, CORROSION AND ROAD SALT.



HERITAGE

PERFORMANCE

FEATURES

SAFETY

AWD

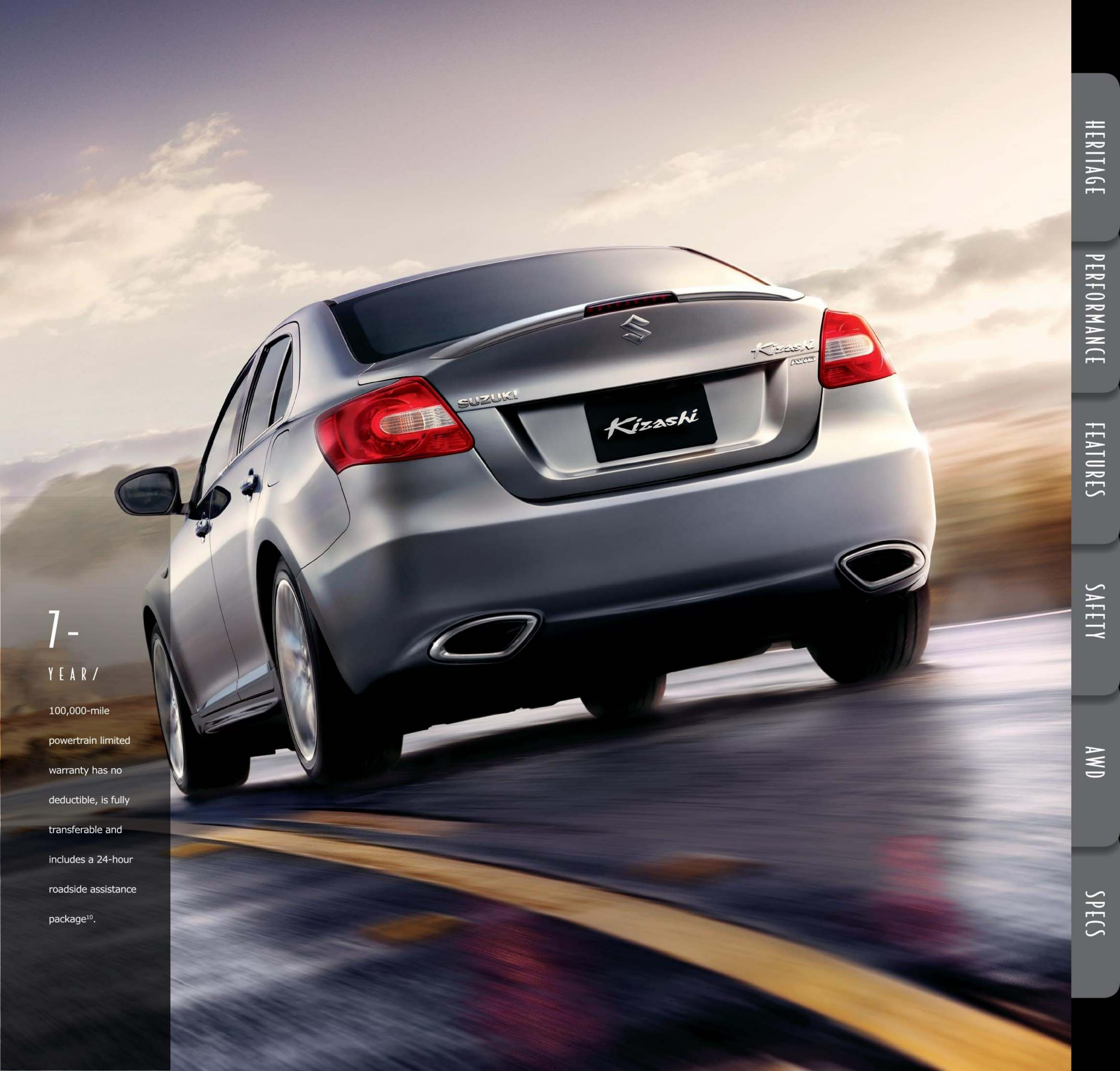
SPECS



AMERICA'S #1 WARRANTY

REASSURANCE

KIZASHI SPORT GTS
Shown in Platinum Silver Metallic



7-
YEAR /

100,000-mile
powertrain limited
warranty has no
deductible, is fully
transferable and
includes a 24-hour
roadside assistance
package¹⁰.

HERITAGE

PERFORMANCE

FEATURES

SAFETY

AWD

SPECS

SPECIFICATIONS

	S	SE	SPORT GTS	SPORT SLS
ENGINE AND DRIVETRAIN				
2.4-liter DOHC 4-cylinder engine with 185-hp (MT), 180-hp (CVT) and 170 lb-ft of torque	■	■	■	■
Front-Wheel Drive (FWD)	■	■	■	■
Advanced intelligent All-Wheel Drive (i-AWD™)	○	○	○	○
6-speed Manual Transmission (MT)	■	—	■	■
Performance-tuned Continuously Variable automatic Transmission (CVT) ¹¹	○	■	○	○
Steering-wheel mounted paddle shifters (CVT models only)	—	—	■	■
High-output dual exhaust system with integrated rear outlets	■	■	■	■
Zero-maintenance timing chain	■	■	■	■
WHEELS AND BRAKES				
18-inch sport lightweight alloy wheels with 235/45-18 Dunlop ¹² all-season tires	—	—	■	■
18-inch alloy wheels with 235/45-18 Dunlop ¹² all-season tires	—	■	—	—
16-inch steel wheels with full covers and 215/60-16 Dunlop ¹² all-season tires	■	—	—	—
4-wheel disc brakes with Akebono ¹³ components	■	■	■	■
Multi-link rear suspension with KYB ¹⁴ performance shocks	■	■	■	■
Sport-tuned suspension	—	—	■	■
EXTERIOR				
Front sport fascia, Aero Body Kit and rear spoiler	—	—	■	■
Power glass sunroof with tilt feature and 1-touch control	—	—	■	■
Projector-beam headlamps	■	■	■	■
Automatic headlamp control	—	—	—	■
Foglamps	—	—	■	■
Variable intermittent wipers	■	■	■	■
Automatic rain-sensing wipers	—	—	—	■
Power side mirrors (heated on AWD and SLS FWD)	■	■	■	■
Rear sonar parking assist ⁸	—	—	—	■
INTERIOR				
Navigation system with rear-vision camera and traffic information	—	—	○	○
Bluetooth ¹⁵ wireless streaming audio ¹⁶ and hands-free mobile phone connection	—	—	○	■
SmartPass [®] keyless push-button ignition and entry	■	■	■	■
Dual-zone automatic climate control with pollen filter and rear-seat vents	■	■	■	■
Sport seats with ergonomic design	■	■	■	■
Leather-appointed interior	—	—	—	■
Leather-wrapped steering wheel with cruise control and integrated audio controls	○	■	■	■
Leather-wrapped shift knob and parking brake lever	—	■	■	■
Leather sport steering wheel and automatic transmission shift knob	—	—	■	■
10-way power driver's seat adjustment with 3-position memory (includes power lumbar)	—	■	■	■
4-way power front passenger's seat	—	—	—	■
Heated front seats	—	—	—	■
Rockford Fosgate ¹⁷ 425-watt, 10-speaker, 8-channel AM/FM/CD/XM ¹⁸ audio system with subwoofer	—	—	■	■
7-speaker AM/FM/CD audio system with XM ¹⁸ compatibility (standard on S automatic transmission models) ¹⁹	■	■	—	—
USB ⁵ audio input ²⁰ (for MP3 or iPod ²¹ music player)	■	■	■	■
Tilt and telescoping steering wheel adjustment	■	■	■	■
Automatic day/night rearview mirror	—	—	—	■
Homelink ²² remote wireless control system	—	—	—	■
Information display (outside temperature, mpg, range, average speed)	■	■	■	■
Power windows (front auto up/down) and door locks	■	■	■	■
Sport gauges featuring backlit instrumentation	■	■	■	■
Interior lighting group (LED ambient lights, including glove compartment, door courtesy and front footwell lights)	■	■	■	■
Overhead console with sunglasses holder	■	■	■	■
Center console storage and armrest storage compartments with power outlets	■	■	■	■

■ = Standard ○ = Optional — = Not Available

COLORS



White Water Pearl



Ice Blue Metallic



Deep Sea Blue Metallic



Platinum Silver Metallic



Azure Gray Metallic



Black Pearl Metallic



Vivid Red

ACCESSORIES



Ski/Snowboard Module



18-inch Chrome Wheels²⁴

CARGO

	S	SE	SPORT GTS	SPORT SLS
60/40 split-folding locking rear seats	■	■	■	■
Rear center armrest with pass-through	■	■	■	■
Trunk cargo restraint hooks	■	■	■	■
Remote trunk release with valet lockout switch	■	■	■	■

SAFETY

	S	SE	SPORT GTS	SPORT SLS
Electronic Stability Program with FWD	■	■	■	■
Intelligent Vehicle Stability Program (i-VSP™) with AWD	■	■	■	■
Bosch ²³ Anti-lock Braking System (ABS) with Electronic Brake-Force Distribution (EBD)	■	■	■	■
Brake assist	■	■	■	■
Dual front advanced air bags — Supplemental Restraint System (SRS)	■	■	■	■
Side-impact air bags front and rear — outboard passengers	■	■	■	■
Side curtain air bags covering front and rear	■	■	■	■
Vehicle security system alarm with engine immobilizer	■	■	■	■
3-point front and rear seat belts with front height adjustment and pretensioners	■	■	■	■
Rear child-seat tether anchors (x3) and rear child-seat ISOFIX anchors (x2)	■	■	■	■
Side-impact door beams	■	■	■	■

INTERIOR DIMENSIONS

	S	SE	SPORT GTS	SPORT SLS
Head room, front/rear (in)			39.3 / 37.0	
Leg room, front/rear (in)			41.7 / 35.6	
Shoulder room, front/rear (in)			55.5 / 54.6	

EXTERIOR DIMENSIONS

	S	SE	SPORT GTS	SPORT SLS
Wheelbase (in)			106.3	
Overall length (in)			183.1	
Overall width (in)			71.7	
Overall height (in)	58.3	58.3	57.9	57.9

CAPACITIES

	S	SE	SPORT GTS	SPORT SLS
Seating (passengers)			5	
Fuel (gal)			16.6	

EPA ESTIMATED FUEL ECONOMY

	S	SE	SPORT GTS	SPORT SLS
6MT FWD, city/highway (mpg)	21/31	—	20/29	—
CVT FWD, city/highway (mpg)	23/31	23/30	23/30	23/30
CVT AWD, city/highway (mpg)	23/30	22/29	22/29	22/29

● Beige Fabric – S, SE
● Beige Leather – SLS

● Black Fabric – S, SE and GTS
● Black Leather – SLS

KIZASHI SE MODEL STANDARD FEATURES (ADDITIONAL TO S 6MT)

• Continuously Variable automatic Transmission (CVT) • 18-inch alloy wheels with 235/45-18 Dunlop¹² all-season tires • Leather-wrapped steering wheel, shift knob and parking brake lever • Cruise control • Power 10-way memory driver's seat • AM/FM/CD audio system with USB input²⁰

KIZASHI GTS MODEL STANDARD FEATURES (ADDITIONAL TO SE)

• 6-speed manual transmission (FWD only) • 1-touch sunroof • Steering wheel paddle shifters (CVT only) • 425-watt Rockford Fosgate¹⁷ 10-speaker audio system with subwoofer • 18-inch sport lightweight alloy wheels • Sport package with sport fascia, rear spoiler, Aero Body Kit, foglamps, sport suspension and sport steering wheel

KIZASHI SLS MODEL STANDARD FEATURES (ADDITIONAL TO GTS)

• Leather-appointed interior • Heated front seats • 4-way power front passenger seat • Homelink²² universal garage door opener • Automatic headlamps • Exterior heated mirrors • Auto dimming day/night mirror (inside) • Automatic rain-sensing wipers • Rear sonar parking assist⁸ • Integrated Bluetooth with streaming audio¹⁶

¹© 2010 AutoPacific, Inc. Vehicle Satisfaction Award. ²Suzuki engineered the Hayabusa for experienced riders. Avoid excessive speeds. Never carry passengers or engage in stunt riding. ³185-hp on MT. ⁴Sourced from fueleconomy.gov. ⁵USB device, iPod[®] and Bluetooth[®] compatible cell phone supplied by Customer. ⁶The highway mpg as displayed is based on EPA mileage estimates, sourced from fueleconomy.gov. (MT FWD and CVT FWD, S trim). Actual highway mpg may vary based on options, driving conditions, driving habits and vehicle's condition. ⁷Intelligent Vehicle Stability Program (i-VSP™), which should remain on when driving except when freeing the vehicle from mud or snow, cannot be relied upon to prevent accidents due to abrupt steering, carelessness or dangerous driving techniques. Always drive safely. ⁸Rear sonar parking assist is a convenience feature and is not a substitute for looking to the rear and using rearview mirrors. Drivers should ensure the area is clear when driving in reverse. ⁹Government star ratings are part of the National Highway Traffic Safety Administration's (NHTSA's) New Car Assessment Program (www.safercar.gov). ¹⁰See suzuki.com or your local Dealer for more information on warranty highlights or the New Vehicle Warranty Information booklet for full warranty disclosure. ¹¹Required on AWD models. ¹²Dunlop[®] tires and the associated tire names are registered trademarks of Dunlop[®] Tire and Rubber Corporation. ¹³Akebono[®] is a registered trademark of Akebono Brake Corporation. ¹⁴KYB[®] is a registered trademark of KYB Co. Ltd. ¹⁵Bluetooth[®] is a registered trademark of Bluetooth[®] SIG, Inc. ¹⁶Bluetooth[®] streaming audio not available on navigation equipped models. ¹⁷Rockford Fosgate[®] is a registered trademark of Rockford Corp. ¹⁸Required XM[®] tuner and subscription sold separately. All fees and programming subject to change. Subscriptions subject to customer agreement available at xmradio.com. XM[®] service only available in the 48 contiguous United States. The XM[®] name is a registered trademark of XM[®] Satellite Radio. ¹⁹Head unit sold as an accessory on S manual transmission. ²⁰USB port replaced by iPod compatible cable on navigation equipped models. ²¹iPod[®] is a registered product of Apple, Inc. ²²Homelink[®] is a registered trademark of Johnson Controls. ²³Bosch[®] is a registered trademark of the Robert Bosch, LLC. ²⁴Only available on GTS and SLS models. ²⁵Based on IHS Global Insight data for Japan sales. ²⁶Based on ALG data as of 7/29/10. Accord[®], Altima[®], Camry[®], Passat CC[®], Mazda6[®], Fusion[®], Porsche[®], Volvo[®] and Mercedes-Benz[®] are registered trademarks. All competitor specifications are obtained from manufacturers' web sites 7/16/10. Color options may vary by trim. Specifications and equipment are based on information available at time of print and subject to change without notice. For more information, contact your local Suzuki Dealer or visit suzuki.com.

SUZUKI FAST FACTS:

MAKER OF THE NUMBER-1-SELLING CAR IN JAPAN SIX YEARS IN A ROW²⁵.

SECOND LARGEST CAR MANUFACTURER IN JAPAN²⁵.

HAS BETTER RESALE VALUE THAN PORSCHE®, VOLVO® AND MERCEDES-BENZ®²⁶.

HIGHEST SATISFACTION OF ANY 2010 CAR. AUTOPACIFIC 2010 VEHICLE SATISFACTION AWARD¹.



KIZASHI



SX4
CROSSOVER



SX4
SPORTBACK



SX4
SPORT



GRAND
VITARA



EQUATOR



SUZUKI

SUZUKIAUTO.COM