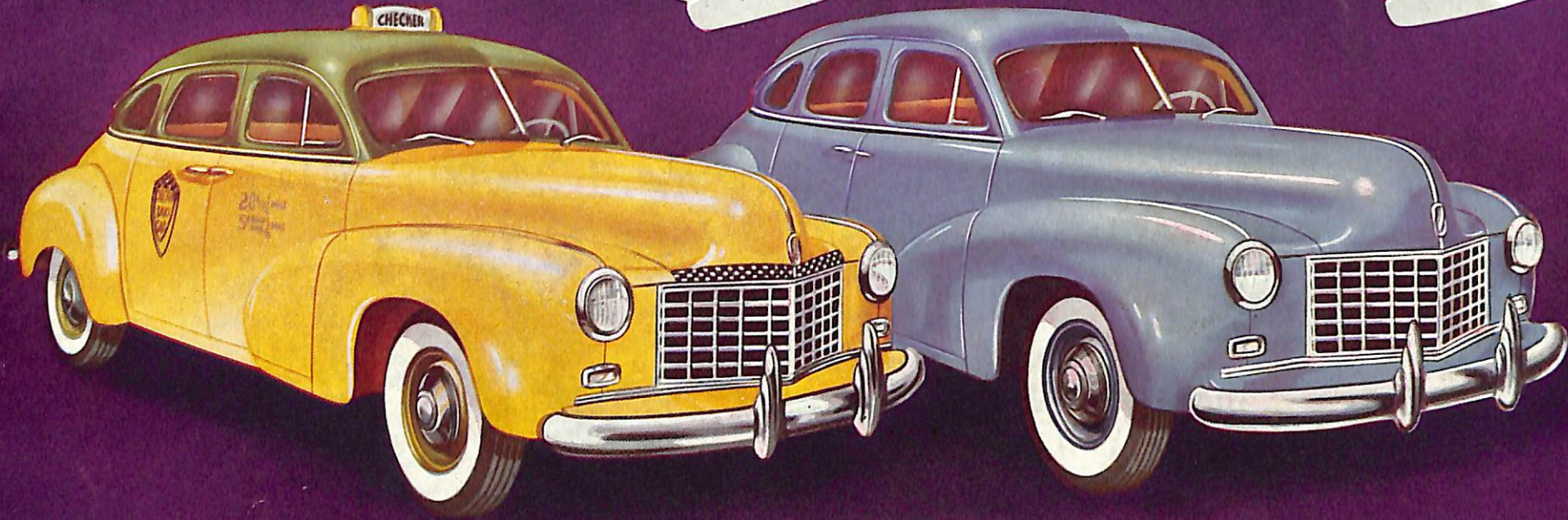


A  
REVENUE BUILDING  
TAXI

A  
LUXURIOUS PERSONAL  
CAR



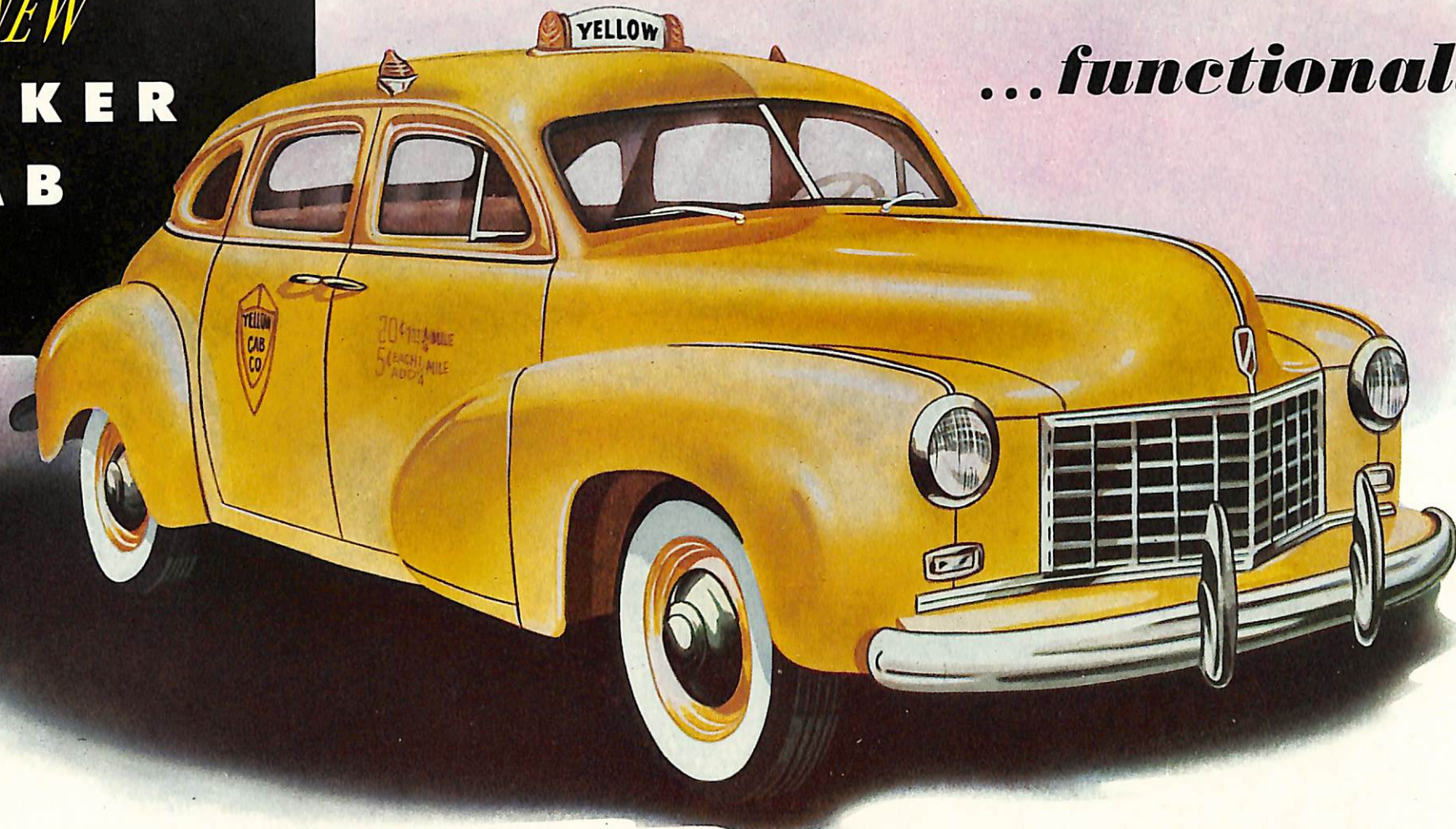
-1948-

*Two profitable cars combined...*

*in the NEW*  
**CHECKER**  
**CAB**

*The NEW*  
**CHECKER  
CAB**

*...functionally*



Only CHECKER has ALL these features!

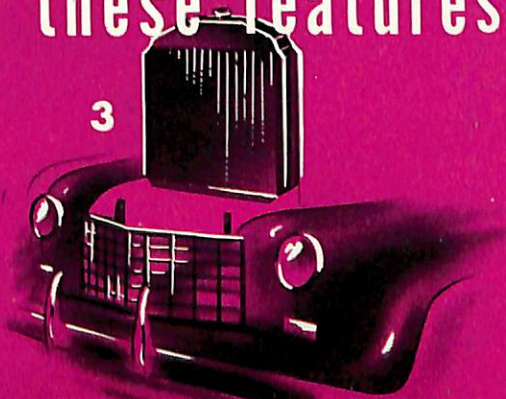
1



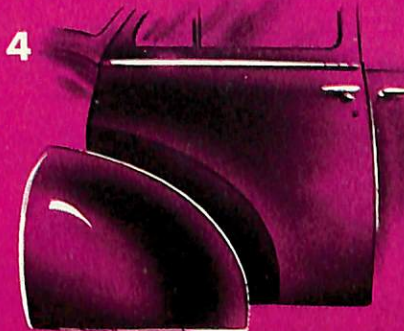
2



3



4



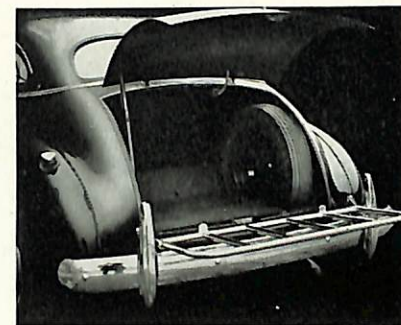
# designed for **REVENUE** — **RESALE**

**the simpler . . . safer . . . better riding cab**

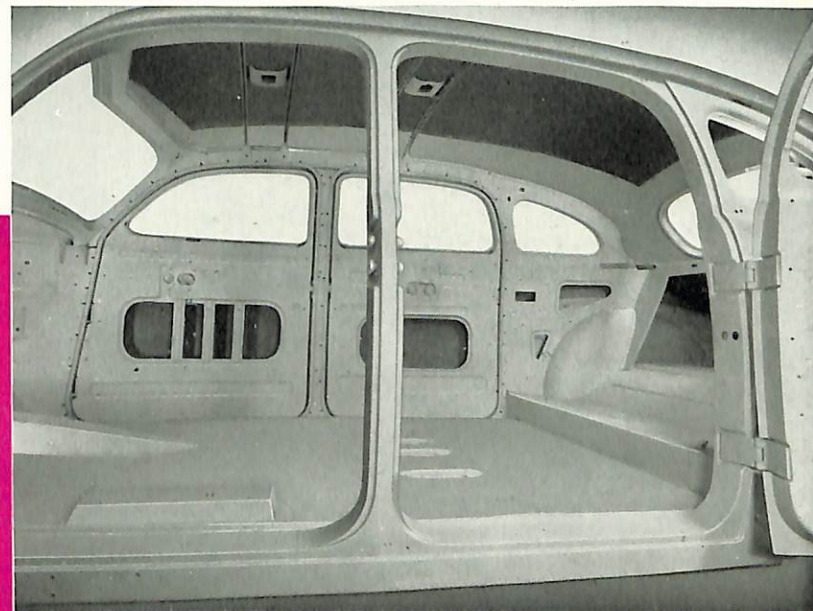
Putting a meter into a pleasure car doesn't make it a cab. And drivers want cabs, not converted pleasure cars. They want cab ruggedness, maneuverability and safety. Checker makes the only cab with all these features, built specifically for rough urban service. Checker has produced a splendidly engineered taxicab that is built so as to minimize the down-time from any collision, front, rear, or sideswipe, and make repairs a simple easy task. The new Checker also solves an old problem of cab operators — what to do with their vehicles when their useful cab life is over. In appearance the new Checker is a handsome pleasure vehicle, and can be converted from a taxicab to a pleasure car within two hours by removing the partition and driver's seat and replacing with a full front seat available at a nominal cost.



Front end view of new Checker shows the distinctive styling, beautiful grille. It's streamlined and graceful—yet sturdy and practical.



Rear end view shows roomy luggage compartment and trunk rack which may be had as optional equipment.

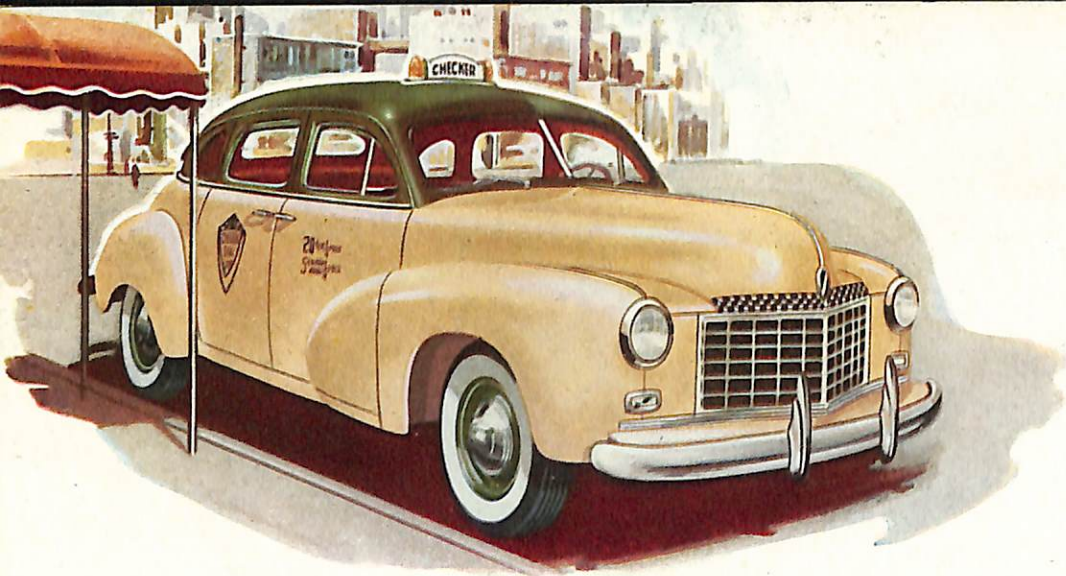


Checker bodies are monocoque constructed in that the frame, girders, sides, top and floor are all welded into a single unit.

5



1. Grille moulding sections are made of pressed steel. In case of damage, can be straightened or replaced in sections, or entire grille may be removed without disturbing radiator.
2. Front fender may be removed without disturbing grille or splash panel.
3. Radiator may be removed without disturbing other sheet metal parts.
4. Front fender rear extension may be removed without disturbing fender or any other metal parts. This is also true of the running board.
5. Trunk rack or rear fenders may be removed without disturbing other parts of the body.



## The new **CHECKER** is a

Traditional cab appearance goes out the window with the new Checker—but not time-tested cab construction. The new Checker has every mechanical feature that taxi service demands. Top cab performance and maximum seating capacity are combined with outstanding good looks . . . smooth flowing fenders . . . gleaming broad chromium grille . . .

### THE CHECKER TAXICAB MODEL A-2

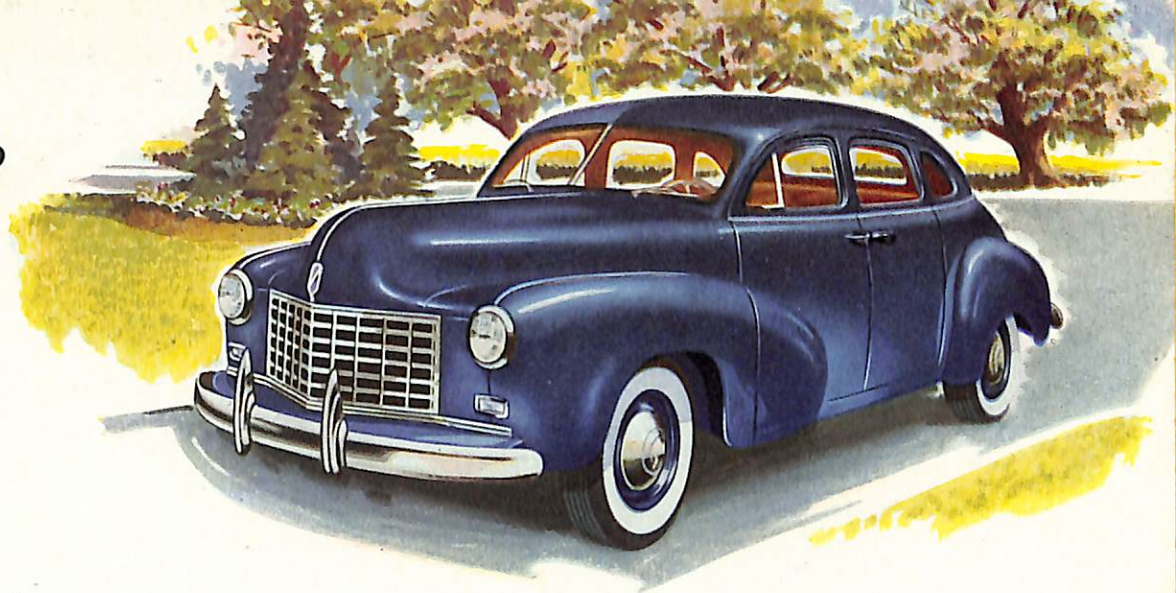
The interior of the new Checker conforms in every detail desired by cab operators. The Model A-2 is the complete taxicab requiring no conversion package. The passenger compartment is spaciouly designed to comfortably seat five **forward riding adults**. Deep custom-built cushions and back-rest make for maximum riding ease and relaxation, all covered with attractive and desirable material that is easily washable. Partition is designed to provide passenger privacy as well as protect driver's security. Heat is furnished to both driver and passengers by heavy-duty two-directional heater. The driver's compartment offers a seat adjustable to different seating positions, making comfort possible for a driver of any stature. Twin-duct defrosters are built into the cab, which clear the windshield without heater operation. Ample clear floor space for luggage is available at the right side of the front compartment.



Checker Taxicab showing roomy rear seat, flat floor and folding seats. Partition separates passengers from driver. Driver's seat is comfortable and there is adequate luggage space.

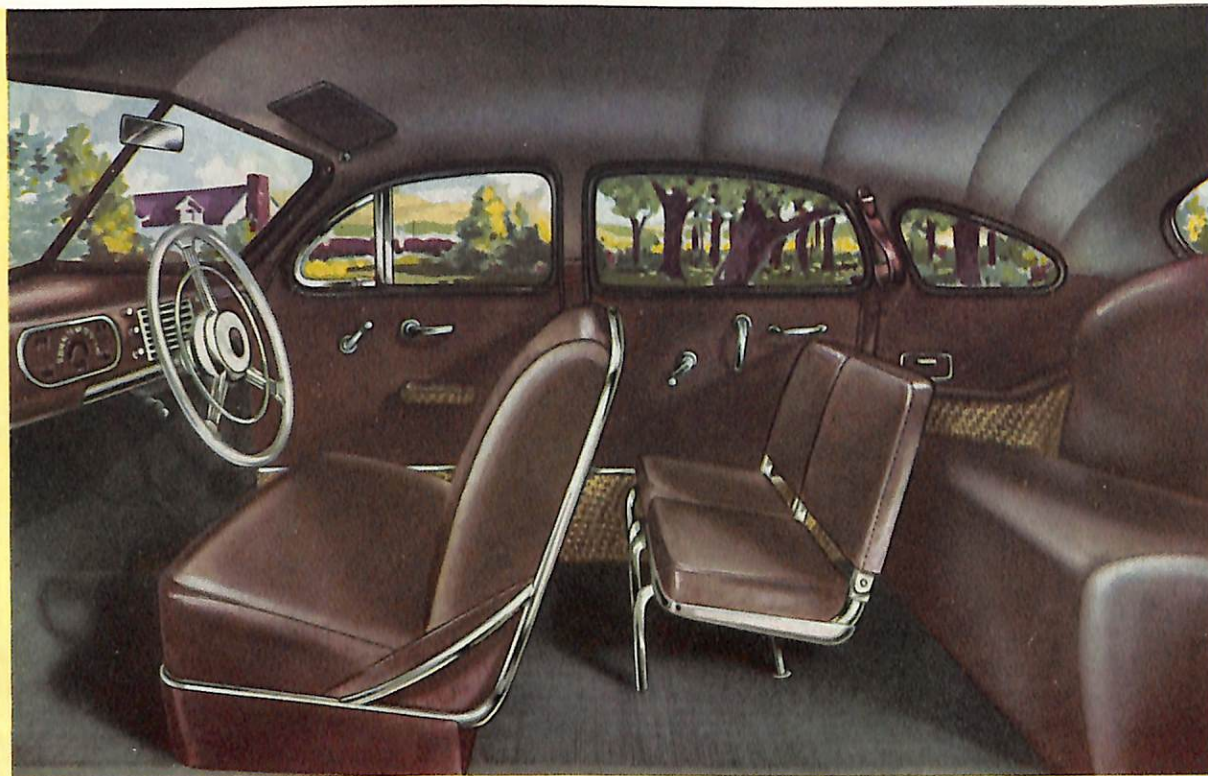
## "TWO for ONE" value!

sleek hood . . . and that smart close-to-the-ground look. As a cab, the new Checker is a standout anywhere — it will attract many extra rides. With meter and partition removed and conventional front seat installed, it is a luxurious limousine for hotel, airline, and resort service.



### THE CHECKER LIMOUSINE SEDAN MODEL A-3

The Checker Limousine Sedan is the ultimate in luxury and appearance. The famous Checker, associated for one-quarter century with taxicabs, is now available as a passenger car and will provide comfortable transportation **for as many as nine adults** — yet the new Checker compares favorably in maneuverability and overall length with the popular small pleasure cars. Interior fittings are the equal of those in the finest pleasure cars. Upholstery is smart, durable and available in pleasing colors. Twin-duct defrosters, independent of the heater, keep the windshield clear without the necessity of operating a heater. The full width front seat is adjustable, and there is an abundance of space in the luggage compartment and on a trunk rack for carrying luggage — without crowding the driver or the passengers.

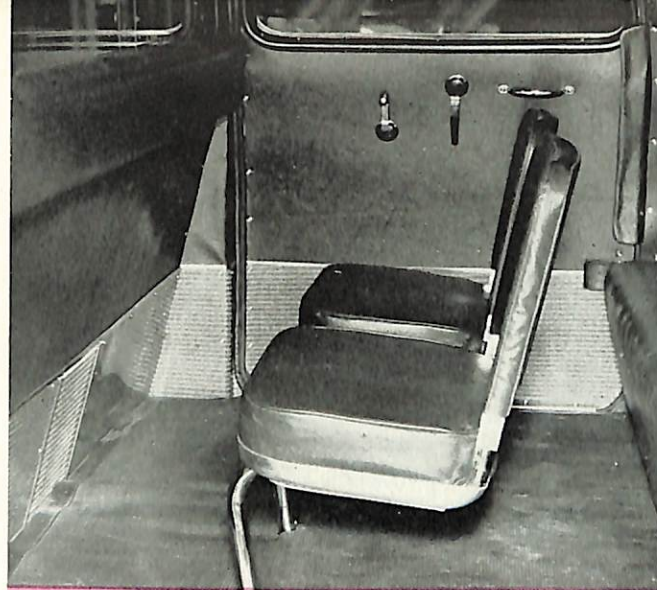
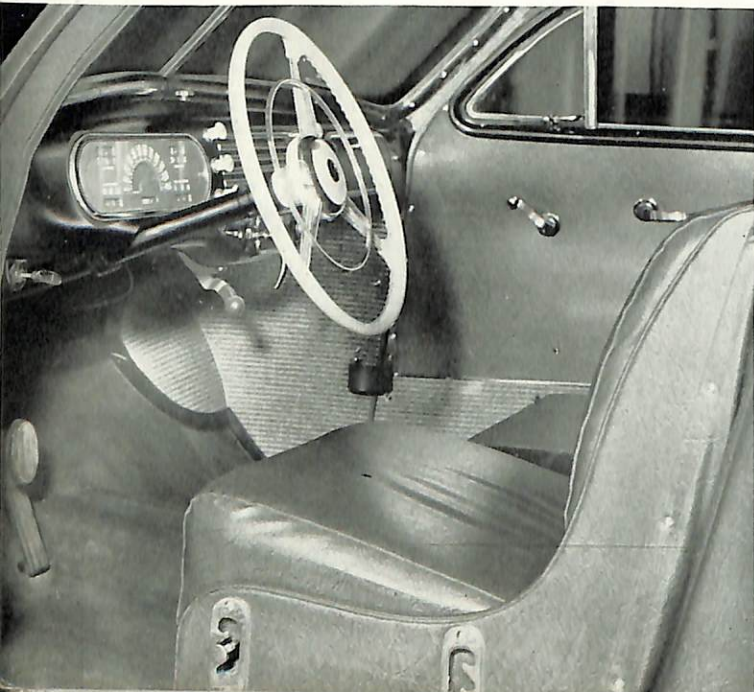
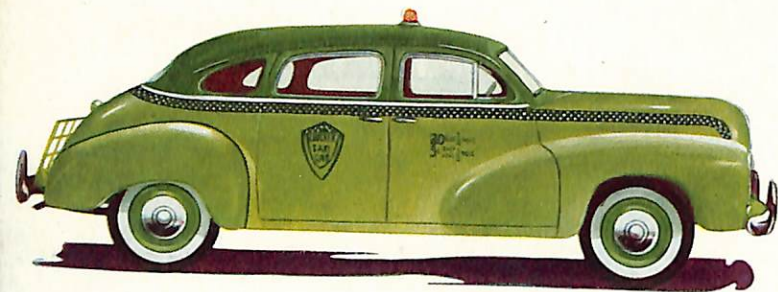


The Checker Limousine with no partition between driver and passengers has a full front seat with same roomy back seat and folding chairs.

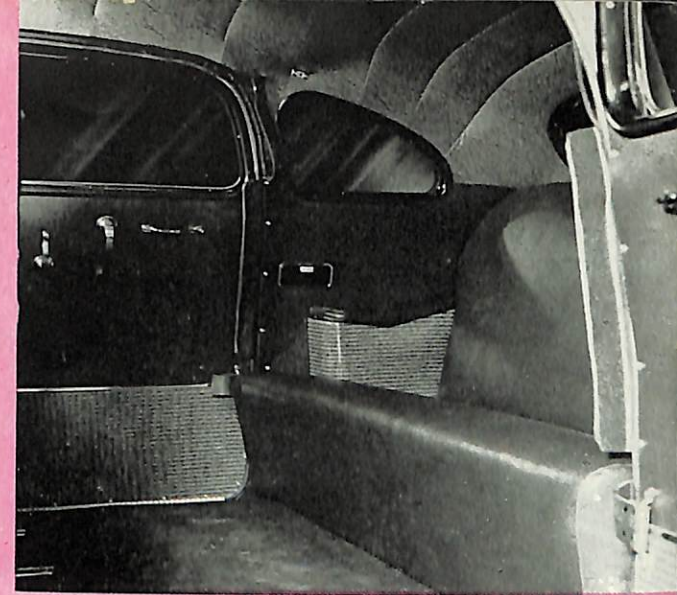
# CHECKER

*considers comfort  
and safety...*

**for both  
passenger and driver**



Rear compartment showing flat floor and folding seats.



Full rear seat radiates comfort and roominess.

The Checker customer's rider is cushioned on leaf springs that absorb the hardest jolts. Cowl ventilators, forced draft ventilation, plus rear compartment heaters, assure comfort in all weathers. Twin-duct defrosters are built into the driver's compartment which clear the windshield without heater operation. The driver's seat is adjustable to three different heights at either front or rear of seat, or both, or on one side or the other, or both, and six positions forward and backward. The many combinations of positions thus made available assure driver comfort and relieve fatigue.

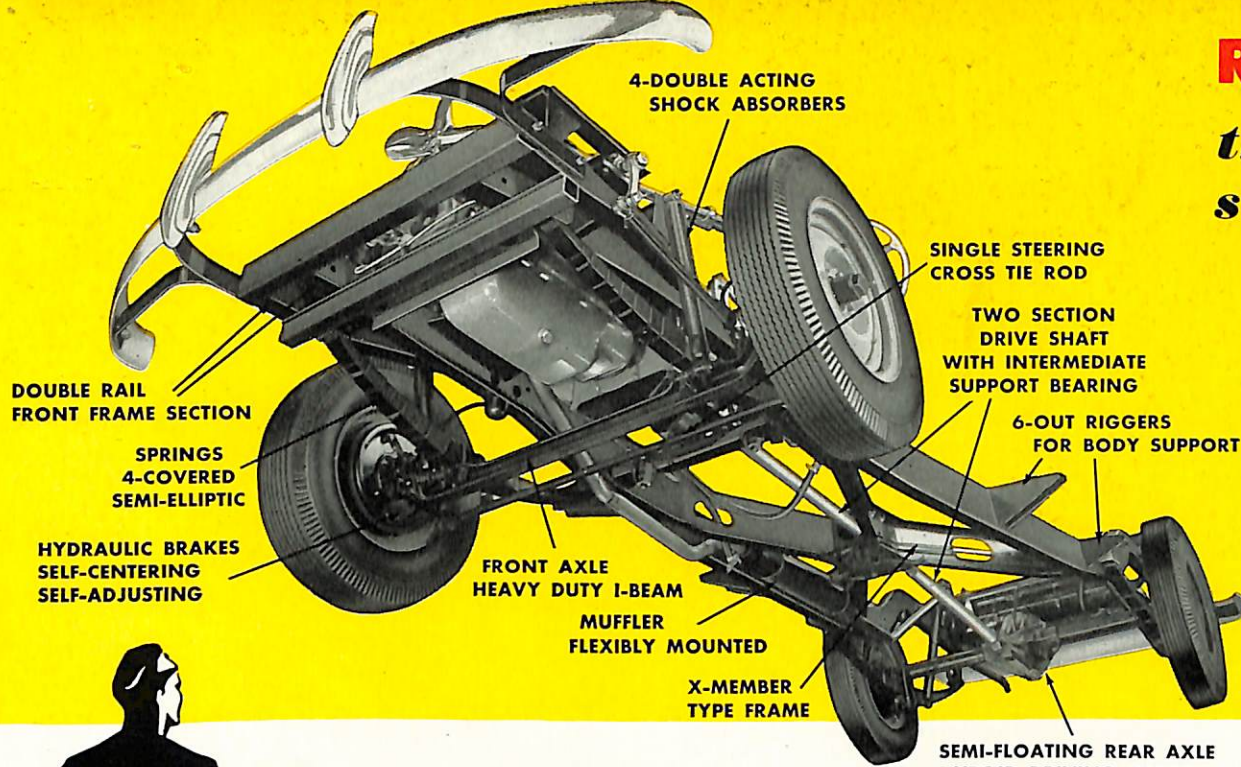
But not only comfort is considered — safety is assured as well, by every feature considered advisable for taxicab operation. Sponge rubber crash pads protect passengers in emergency stops. Finger shields help prevent mashed

fingers, and door handles are located so as to prevent accidental door opening. Tell-Tale Lite warns when doors are not completely closed. The gas tank is equipped with a Vent-alarm that signals when the tank is full, thereby eliminating the possibility of overflow and wastage of gasoline. A back-up buzzer is installed and operates when cab is in reverse gear. This is an added safety feature warning anyone back of the cab and eliminates the possibility of an accident. A floor mat, jute-backed, helps prevent passengers slipping. A flat floor in the rear compartment eliminates the awkward hump in the middle, found in conventional cars. All these and many other features go together to help prevent most accidents. Your customers are entitled to these protective features—you provide them all with the new Checker.

Drivers compartment with its easy adjustable seat, carefully positioned driving controls, and other safety and comfort conveniences.

# RUGGED CONSTRUCTION

that keeps **CHECKER** on the street and out of the garage!



Checker reduces out of service time, because the long life is built in. The Double Rail Front Section, The X-Member Type Frame, The Outriggers, all contribute to the strength of the complete structure.

Both front and rear springs are long and flat semi-elliptic leaf type. All leaves have oil impregnated wood liners between them to provide lubrication, and the entire spring is protected by metal covers. This, coupled with shock absorbers that are double acting, telescopic type front and rear, contribute to passenger comfort and a better ride.

The front axle, rear axle, brakes and two section drive shaft are all important factors contributing to low maintenance.



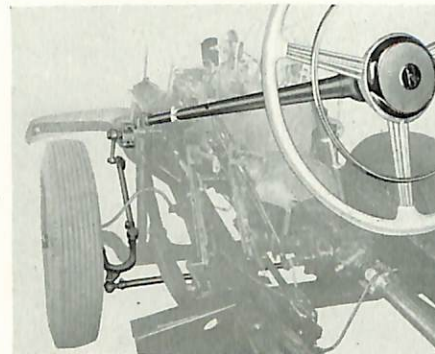
Twin-lever type steering and the single tie-rod, coupled with the I-beam axle, and semi-elliptic springs, make the maintenance of wheel alignment easy and thereby lessens tire wear.

Propeller shaft — Needle bearing type made in two sections with center support ball bearing mounted in rubber pillow block at X-member. Means less shaft "whip" and longer rear axle life. Permits lower floor and eliminates tunnel hump in rear compartment.

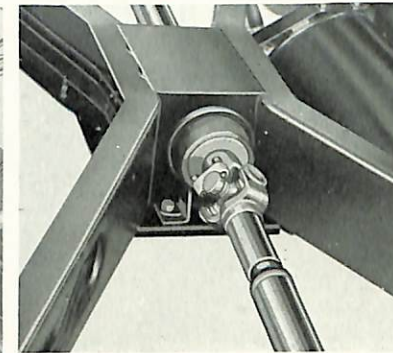
X-member type frame — The intermediate portion of the frame, from the power plant to the rear kick-up, is braced with two X-members welded together at the center into a box section. This relieves the body of most of the twisting strains.

Position of power plant and transmission is centered over front axle to give passenger load the desired "flat, between-the-axles, ride."

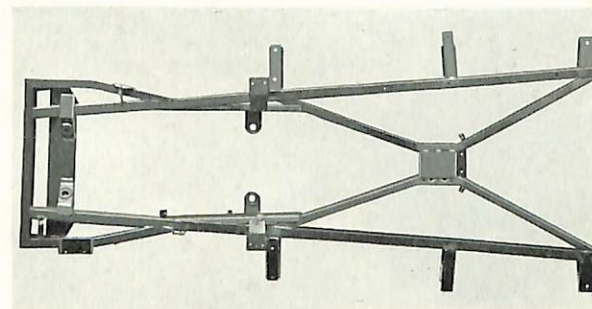
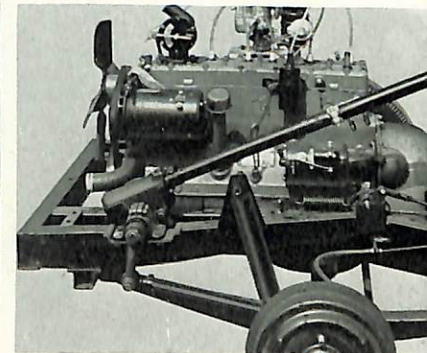
Twin-lever type steering.



Propeller shaft.

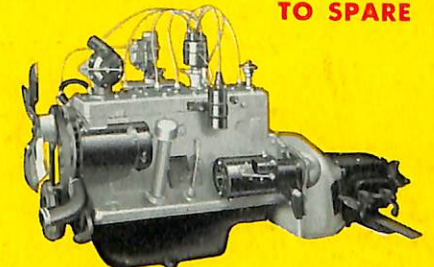


Power plant and transmission.



X-member type frame.

**HORSEPOWER  
TO SPARE**



Dependable engine for maximum power at low speeds with maximum fuel economy. Accessories located for quick service or easy replacement.

# Specifications CHECKER MODEL A-2 TAXICAB

Wheelbase 124" — Overall length 206"

## General Specifications

Wheelbase 124"  
Overall Length 206"  
Turning Radius 21¼' Rt. or Lt.  
Tread Front 60"  
Tread Rear 62½"  
Shipping Weight 3650 lbs.

## Engine

Continental precision-built 6-cylinder, L-head type. SAE rated HP 26.3. Silent chain cam shaft drive.

## Clutch

Borg and Beck 10" diameter with special thermoid heavy duty woven asbestos facing.

## Transmission

Warner Gear, three speed with helical gears for all speeds. Synchro-mesh type shift on second and third drive. Operation of shift is through lever on steering column under wheel.

## Propeller Shaft

Spicer needle bearing type made in two sections with center support ball bearing, mounted in rubber at X-member. This permits a lower floor with minimum height of tunnel for clearance.

## Front Axle

Reversed Elliot type. Main beam SAE 1040 steel, heat treated.

## Rear Axle

Spicer semi-floating type. Hypoid ring gear and pinion with two pinion differential mounted on Timken bearings. Ratio 4.55 to 1.

## Brakes

Wagner hydraulic, self-centering, self-adjusting shoes automatically adjust to compensate for lining wear.

## Suspension

With power plant placed over the front axle the weight distribution with passenger load is evenly balanced between front and rear wheels. The passengers ride between the axles.

This permits using springs with rates which give "flat ride."

## Steering Gear

Ross cam and twin lever type, Model TA-14. Ratio 20-18-20. Steering wheel, 17" diameter.

## Wheels

Budd Steel balanced with drop-center type rims.

## Tires

6.50-16, 6-ply balloon type, front and rear.

## Optional

Automatic choke.

Winterfront—maintains coolant at uniform temperature.

## Checker Cabs build business FOR LARGE AND SMALL FLEETS ACROSS THE NATION

The riding public demands comfort, safety, and pleasure with transportation — the new Checker Cab provides all. The new Checker is outstanding in appearance and distinctive from every angle. It is streamlined and graceful, yet sturdy and luxurious—it will make a favorably outstanding appearance in any setting.

Checker dependability has paid dividends to large and small fleet oper-

ators across the country for many years. Such users as the National Transportation of New York, the Yellow Cab Company of Chicago, The Yellow Taxi Company of Minneapolis, The Yellow Cab Company of Pittsburgh, and The Checker Taxi Company of Chicago, have always found Checker Cabs more dependable, and less costly to operate.

Each operator can be supplied an un-

usual color combination and the limited space in this piece of literature, permits us to reproduce only a few. Whether your operation is that of a large fleet, a small fleet, or an individual operator, you will find, as thousands of Checker Cab users have proved before, the new streamlined Checker Cab will streamline cab operation because it is designed for taxi service.

**CHECKER CAB MFG. CORP.** KALAMAZOO, MICH.