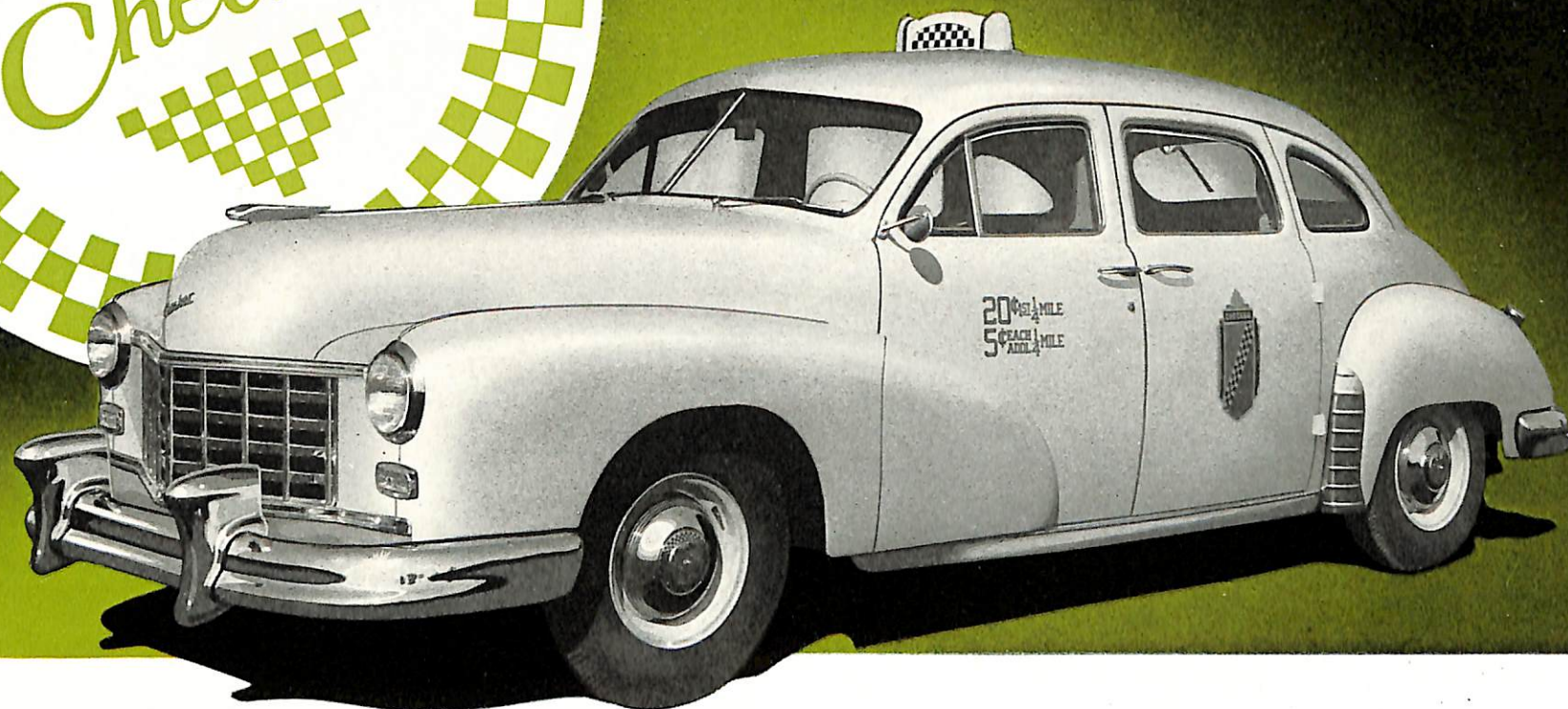




Thrifty for 50...



THE NEW 1950 CHECKER CAB

After 2 Years Successful Operation of Checker Cab Models A-2 and A-3 — NOW presenting the

There are features for passenger comfort and operator profit in

whiffty IMPROVED FEATURES



LARGER AUXILIARY SEATS

with new, stronger, flat spring steel supports.

10% GREATER VISION

Reduces blind spots to absolute minimum — 212 additional square inches of glass area.

25% GREATER COOLING CAPACITY

Redesigned radiator — larger grill openings.

- New type effortless roller mounted Ross cam and lever steering gear.
- Easier, more positive gear shift.
- Twenty-four gallon gasoline tank — requires filling once a day.
- Redesigned springs for easier riding and greater strength.
- Better traffic handling with narrower fenders front and rear.
- Larger luggage compartment easily accessible.



whiffty N

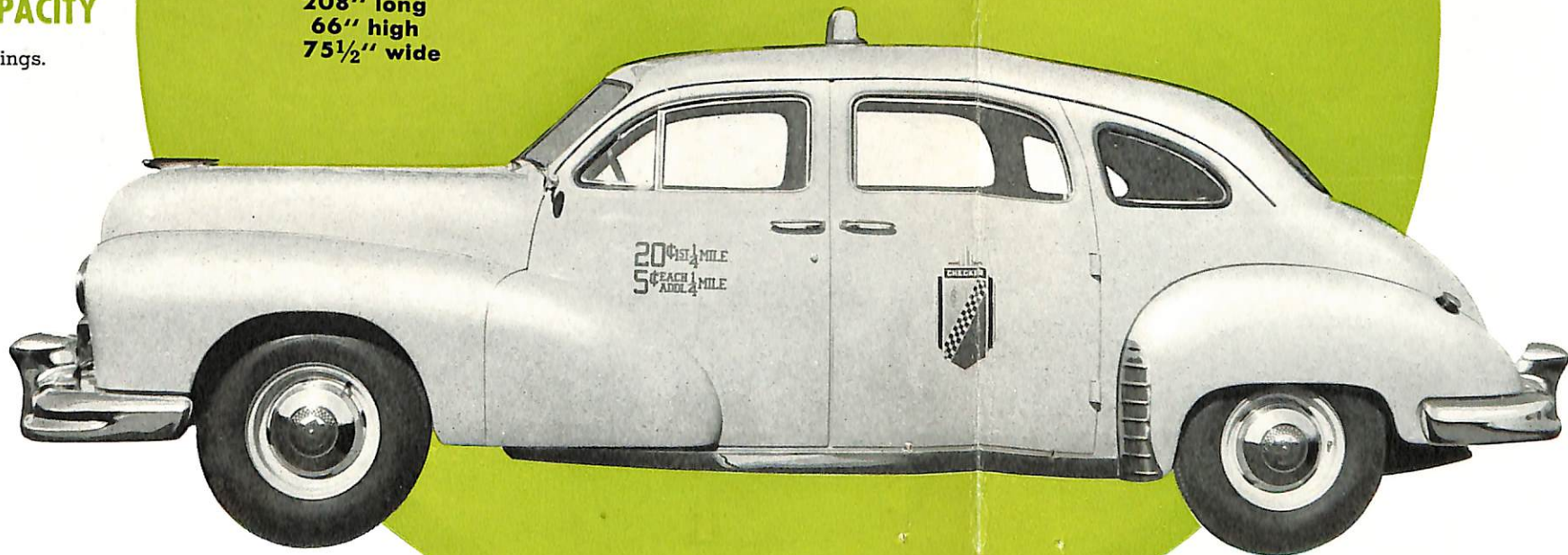
The New 1950 Model is completely redesigned for increased net operator profit with improved features that are less to operate and



SIZE

SMALL CAR OUTSIDE **BIG CAR** INSIDE

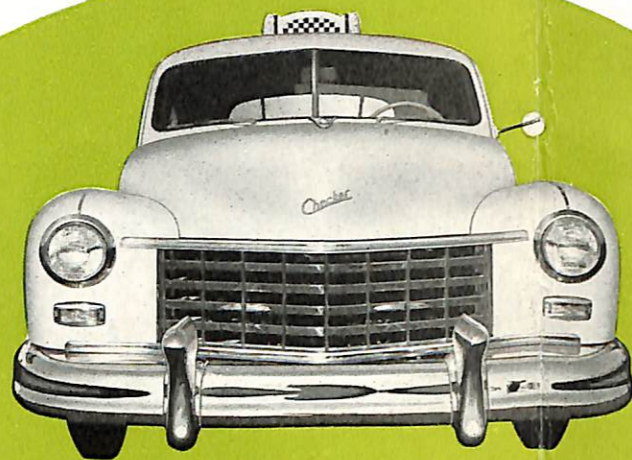
208" long
66" high
75½" wide



Successful Operation of Checker Cab Models A-2 and A-3 — NOW presenting the **NEW IMPROVED MODELS A-4 and A-5**

passenger comfort and operator profit in The *whifty* **NEW 50 CHECKER**

ED FEATURES



The New 1950 Model A-4 Checker Taxicab is completely redesigned for beauty, comfort and increased net operating revenues. A host of improved features give you a cab which costs less to operate and maintain . . . provides

maximum driver and passenger comfort. Best for beauty, best for safety, Models A-4 and A-5 are the only vehicles built exclusively for taxicab service. Model A-4 is the Partition Type Cab, and Model A-5 the Limousine Type.

 *whifty* **NEW FEATURES**

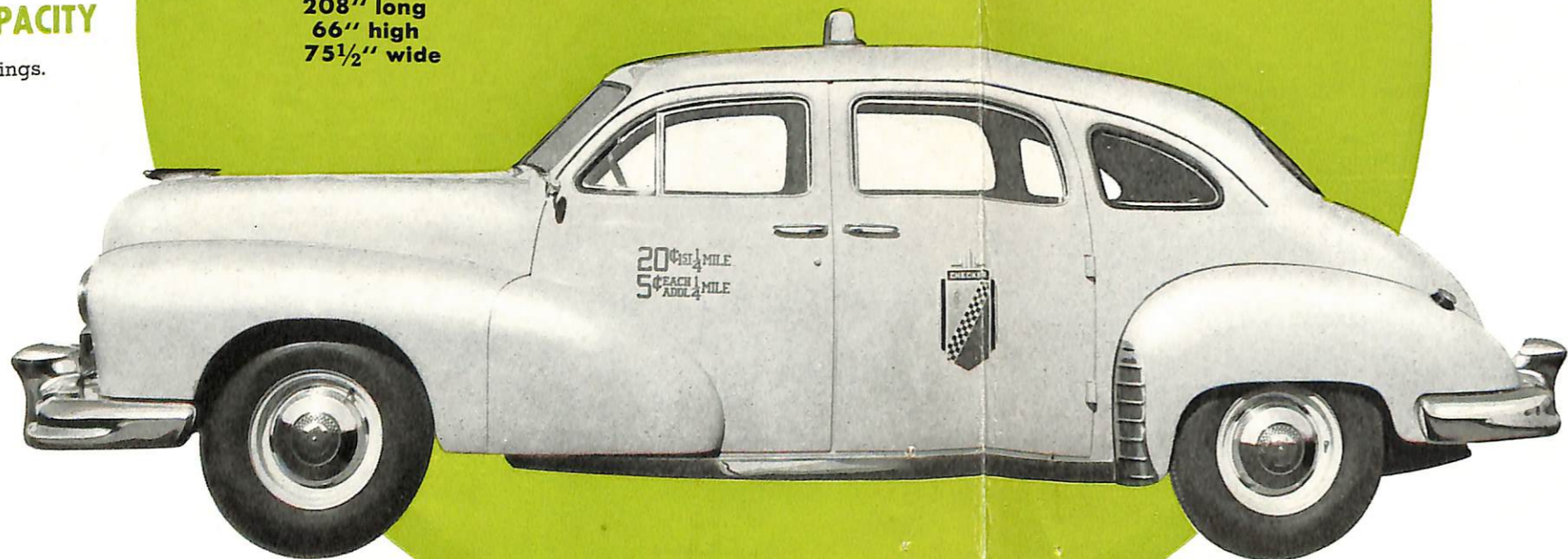


SIZE SMALL CAR OUTSIDE **BIG CAR** INSIDE

208" long
66" high
75 1/2" wide

CAPACITY

enings.



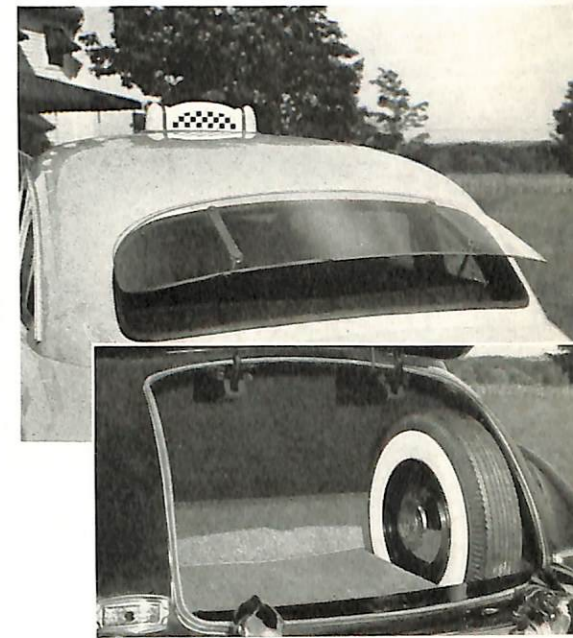
DRIVER COMFORT

Foam rubber seat. 256 possible adjustment combinations for best driving position. Effortless Ross Cam and Lever Type Steering Gear gives driver fingertip control. A lower hood with a larger windshield provides better vision.



EASILY CLEANED

One-piece all plastic rear seat arm rest and quarter panel is sanitary and indestructible. Outlasts any fabric — no covers required.



VENTILATING REAR WINDOW

is vacuum operated, push button controlled by driver. Removes smoke, stale air — maximum cooling for warm days or hot climates.

- Rugged wrap-around bumpers provide greater protection.
- Large sturdy bumper guards.
- Two-tone interior trim — washable Vinolyte imitation leather.
- Foam rubber cushions throughout.
- New instrument panel with flush type controls.
- 16" wheels with 6.50 by 16" tires are standard; also available are 15" wheels which accommodate 7.00 by 15" standard or 7.60 by 15" low pressure tires.
- Stronger, more beautiful hardware inside and out.
- New Blu-Moresque non-slip safety floor mats.
- New larger chrome plated rear fender stone shields.
- New hood ornament.
- Wide chrome plated rub rail runs full length of body below doors.

RUGGED CONSTRUCTION

SPECIFICATIONS - Models A-4 and A-5 Taxicabs

GENERAL SPECIFICATIONS

Wheelbase	124"
Overall Length, bumper to bumper	208½"
Turning Radius	20' Rt. or Lt.
Tread Front	60"
Tread Rear	62½"
Shipping Weight	3720 lbs.

TRANSMISSION

Warner Gear, latest type, three speed. Synchro-mesh type shift on second and third drive. Operation of shift is through lever on steering column under wheel.

ENGINE

Continental precision-built 6-cylinder, L-head type. SAE rated HP 26.3. Silent chain cam shaft drive.

CLUTCH

Borg and Beck 10" diameter with special thermoid heavy duty woven asbestos facing.

REAR AXLE

Spicer semi-floating type. Hypoid ring gear and pinion with two pin-

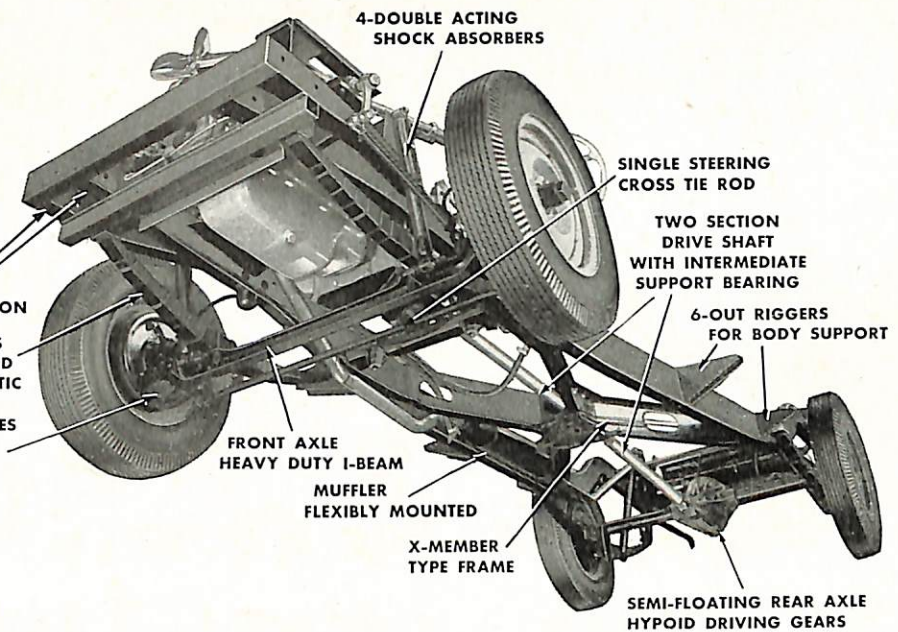
ion differential mounted on Timken bearings. Ratio 4.09 to 1 — other ratios optional.

BRAKES

Wagner hydraulic, self-centering, self-adjusting shoes automatically adjust to compensate for lining wear.

SUSPENSION

With power plant placed over the front axle the weight distribution with passenger load is evenly balanced between front and rear wheels. The passengers ride between the axles. This permits



using springs with rates which give "flat ride."

WHEELS

Budd Steel balanced with drop-center type rims, either 15" or 16".

TIRES

6.50—16, 6-ply balloon type, front and rear.

PROPELLER SHAFT

Spicer needle bearing type made in two sections with center support ball bearing, mounted in rubber at X-member. This permits a lower flat floor with no tunnel.

STEERING GEAR

New, effortless roller mounted Ross cam and twin lever type. Steering wheel, 17" diameter.

FRONT AXLE

Reversed Elliot type. Main beam SAE 1040 steel, heat treated.

OPTIONAL

7.60 x 15 low pressure tires or 7.00 x 15 standard tires with 15" wheels. Automatic choke. Winter-front — maintains coolant at uniform temperature. Overdrive.

CHECKER CAB MFG. CORP., KALAMAZOO, MICH.

Manufacturers of BUILT FOR THE PURPOSE Taxicabs Since 1921