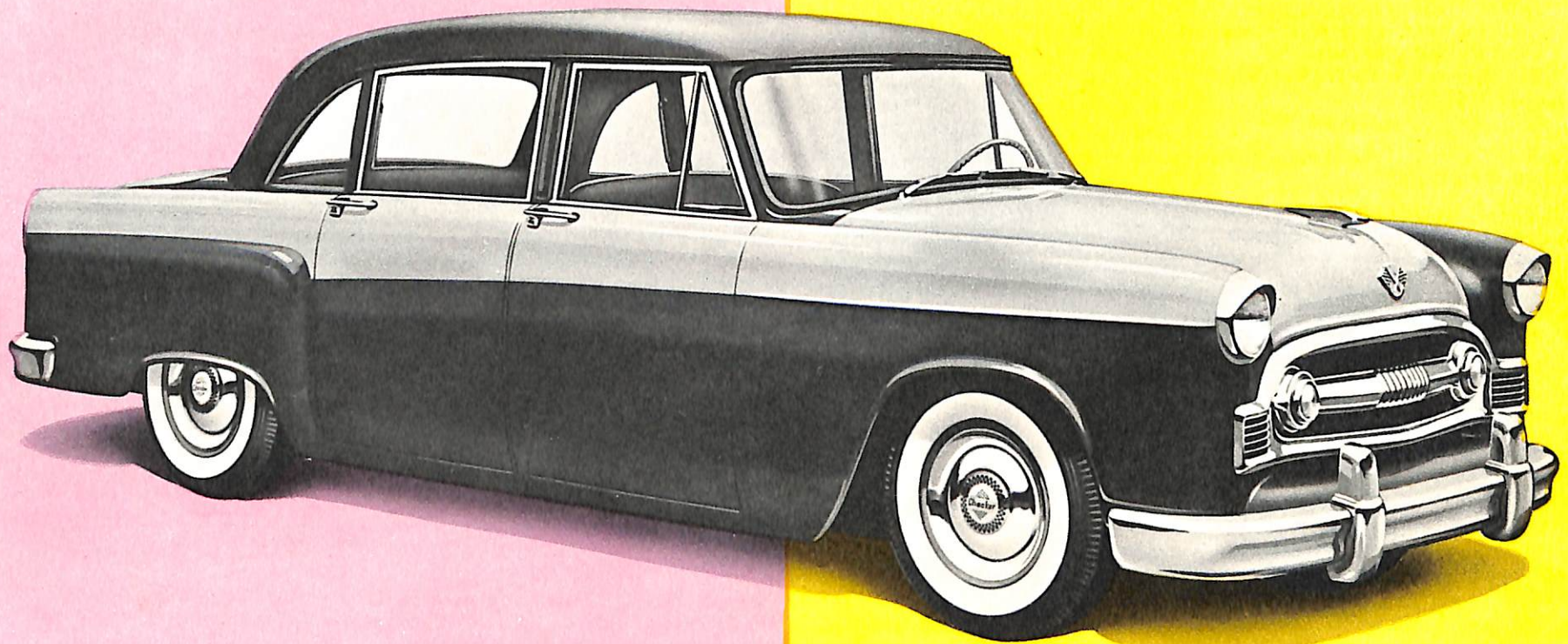


*The renowned* **Checker** **AUTOMOBILES**



**FOR GREATER COMFORT AT A MINIMUM COST OF OPERATION**

# Checker SPECIFICATIONS

## DIMENSIONS:

Wheelbase .....	120"
Overall Length (Bumper to Bumper).....	199.5"
Turning Circle .....	37"
Tread Front .....	60"
Tread Rear .....	62½"

## ENGINE:

Continental F-6226, 6-Cylinder, L Head Type, 3-5/16" Bore, 4¾" Stroke.  
Compression Ratio 7.3:1. Develops 95 H.P. 8:1 Compression Ratio Optional  
Front Seal—Chicago Rawhide—Chrome Hub.  
Moraine Durex 100—Bronze Backed Bearings on Crankshaft and Rods—  
Replaceable Type.

## RING SET-UP:

Chrome Plated Top Piston Ring 3/32" Wide.  
Two Rings 1/8" Taper Face—Compression.  
One Oil Ring with Expander.  
One Ring Below Piston Pin—Wiper.

Anodized Pistons.

Ferrox Treated Valve Guides.

**CRANKSHAFT:** Crankshafts are properly counter weighted and statically and dynamically balanced.

**OILING SYSTEM:** Full pressure feed to all main connecting rod and camshaft bearings, as well as tappets and timing gears. Suitable oil pressure is maintained from idle to maximum speed through an adjustable by-pass valve.

**FUEL SYSTEM:** Zenith 1¼" downdraft carburetor with built in automatic choke, dry type carburetor air cleaner. Carter mechanical fuel pump. Baffle and air scoop for fuel pump to prevent vapor lock. Fuel tank — 22 gallon capacity.

**COOLING SYSTEM:** Centrifugal water pump with impeller mounted on ball bearings. Water jackets are full length. Radiator of fin and tube type — 16 quart capacity.

**IGNITION:** Electric Auto-Lite IGC type distributor with full automatic advance. Moisture proof coil and cables. Champion 18 MM spark plugs.

**STARTING MOTOR:** Electric Auto-Lite MCL heavy duty double coil type. With solenoid switch. Turnkey type starter switch on instrument panel.

**BATTERY:** Willard 15 plate — 115 Amp. hr. at 20 hour rate. Mounted in heavy steel box in rear luggage compartment under floor, away from engine heat, insures longer life.

**GENERATOR:** Electric Auto-Lite GGU. 45 amp. output capacity. Ball bearings front and rear of armature shaft. Voltage regulator Auto-Lite VBA.

**PROPELLER SHAFT:** Spicer needle bearing type with center support ball bearing in a new type rubber mounting at frame X-member.

**FRONT WHEEL SUSPENSION:** Thompson Products ball joint type of latest design.

**CLUTCH:** Borg and Beck 10" single plate with special Thermoid 219 x 16 heavy duty woven asbestos facings with spiral inserted copper wire on spring cushioned type driven member. Grease fitting on throwout bearing.

**TRANSMISSION:** Warner Gear, special type heavy duty, with large bearings. Three speeds forward and one reverse. Helical gears and syncro-mesh for second and high. Spur gear for first and reverse, giving extra strength and long life.

**REAR AXLE:** Spicer semi-floating type. Hypoid ring gear and pinion. Axle shafts 1¼" diameter. Axle tube 2¾" diameter. Spring seats 50" centers. Standard ratio 3.73 to 1, optional 4.09 to 1 and 4.55 to 1.

**BRAKES:** Wagner four wheel hydraulic. Self centering — adjusting.

**PARKING BRAKE — REAR WHEELS:** Brake lever with improved ratchet lock, release by turning handle. Mounted to left of driver on brackets inside of body cowl.

**SUSPENSION:** Front springs — Coil springs of chrome steel. Rear springs — Semi-elliptic — 2" wide, 55" long, 5 leaves.

**SHOCK ABSORBERS:** Gabriel telescopic hydraulic, double acting. Ride stabilizer bar at front end.

**STEERING GEAR:** Gemmer worm and gear model, 18" steering wheel.

**WHEELS:** Budd steel, balanced with drop center rims. 15" rims.

**TIRES RECOMMENDED:** 7.10 x 15 and 6.70 x 15, 4 or 6 ply.

**FRAME:** Frame is pressed steel with channel section side rails constructed in our own plant. The box section at forward part of frame is joined by two tubular cross members and the rear portion of frame at kick-up is joined with another tubular section.

## Body

The body is of an entirely new design with ultra modern exterior and interior. The interior of the body, excluding front, rear and auxiliary seats, is of steel structural members featuring curved design having infinitely greater strength than the conventional structure now used in automobile bodies, thus providing greater safety protection to the riding public when accidents occur. It also provides the utmost in sanitary conditions.

Trim such as the head lining, door panels and seat cushions are in the latest and most modern automotive design.

**GRILLE:** This is of two-piece sheet metal construction incorporating the parking and directional lamps. It can be easily removed and repaired without disturbing other parts.

**FENDERS:** All four fenders are removable in minutes. They are of two-piece construction so designed that the outer half may be removed for repair without disturbing the inner half, or both may be removed as an assembly without disturbing or removing other parts. The headlamp is secured to the front inner fender by a structural ring and need not be disturbed when the outer fender is removed.

# THE RUGGED *Checker* CHASSIS

**PROPELLER SHAFT:** Spicer needle bearing type with center support ball bearing on a new type rubber mounting at frame X-member.

**TRANSMISSIONS:** Warner Gear. The extra-strength transmissions of both the Standard and Automatic types, designed and built for Checker, offer long life and trouble-free maintenance.

**CONTINENTAL ENGINE:** This famous "Precision Balanced" Continental Engine assures smooth performance, and horsepower to spare at all speeds, under all driving conditions, with minimum gas consumption. It has a proven record of long life, with minimum of repair. All accessories and fittings are located for quick service and easy replacement.

**BRAKES:** Self-centering and self-adjusting brakes are offered in both Standard and Power types. Extra long-life bonded brake linings for swift, sure, safe stops.



**BATTERY:** Battery mounting located in the rear trunk compartment under floor.

**SUSPENSION:** Front springs — Coil springs of chrome steel. Rear springs — Semi-elliptic — 2" wide, 55" long, 5 leaves.

The policy of Checker Cab Manufacturing Corporation is one of constant improvement in engineering, design and manufacture. Therefore, specifications, equipment and prices are subject to change without notice.

**HOOD:** Hood assembly is easily detached from the body by the removal of four bolts, alignment is practically automatic. The hood lock is of a new and compact design, incorporating a built-in safety catch.

**FRONT AND REAR BUMPERS:** These one piece interchangeable bumpers wrap around the lower part of the fenders and provide maximum protection to both the fenders and to the head and tail lamps. Two bumperettes are provided on each bumper.

**HEATER:** a newly designed cowl mounted heater with fresh air intake and centrifugal blower assures passengers and driver of abundant heat even on the coldest days.

**WINDSHIELD:** The windshield is of semi-wrap-around design, providing clear and undistorted vision.

**WINDSHIELD DEFROSTER:** The defrosting system of new construction operates through the cowl mounted heater to spread a blast of hot air across the entire windshield area. This new system insures rapid and continuing defrosting action.

**WINDSHIELD WIPERS:** Trico vacuum powered, vacuum booster direct drive by rods — NO CABLES.

**INSTRUMENT PANEL:** The instrument panel is welded into the body structure increasing the strength of the body.

**DOORS:** The doors are of two-piece construction, the upper half being separable from the lower panel at the belt. The rear doors are hinged on the center post and in open position present more space for entrance and exit than that provided on conventional stock cars.

The door hinges are of the concealed type, with a built-in door check and hold-open device incorporated.

The door locks are operated by a pushbutton handle on the exterior. The interior handles must be lifted to unlock the door. Any downward pressure positively locks the door.

**DRIVER'S SEAT:** The driver's seat is of tubular design permitting deep comfortable seat cushions, with a manually operated seat adjustment mechanism provided.

**REAR SEAT:** The rear seat is of extra deep construction with heavy duty seat and back springs, and is trimmed with vinyl upholstery material. Bolstered for extra safety and comfort.

**FLOOR MATS:** The front floor mats are of rubber construction, insulated from heat and noise by pads. The exceptionally easy to clean passenger compartment has a floor mat, equipped with skid strips at each door.

**REAR DECK LID:** The rear deck lid is mounted on a hinge of sturdy design. The lock is key operated to open and is automatically locked when closed. Handle operation, both locking and non-locking type is also available.

**TAIL AND DIRECTIONAL LAMPS:** The tail and directional lamp bulbs readily changed from the luggage compartment without use of tools.

## Power Assists

**AUTOMATIC TRANSMISSION:** Warner Gear. Torque convertor type with automatic planetary gear train. Three speeds forward and one reverse — hydraulically controlled. Proved over millions of miles in all types of actual driving conditions. Axle ratio 3.31:1, 3.54:1 optional.

**POWER BRAKES:** Power applied by vacuum through Bendix Hydrovac through the hydraulic brake system master cylinder. Self centering — adjusting.

**POWER STEERING:** Power is applied to the turning of the front wheels by hydraulic pressure built up by a pump on the end of the generator. This unit operates in conjunction with a Ross cam and lever steering gear 19:1 ratio.

**DRIVER'S SEAT:** A four-way electrically operated seat adjusting mechanism is available for maximum driver comfort.

## Optional Equipment

**ENGINE:** Low compression cylinder head with 6.8 to 1 ratio for low speed, low grade fuel operations when desired.

**AUXILIARY SEATS:** The folding auxiliary seats are of a unique design and provide easier exit and entrance.

**12 VOLT ELECTRIC SYSTEM  
with 40 amp. generator  
— 80 amp. hr. battery.**

**55 AMP. 6 VOLT  
GENERATOR**

**W. S. W. TIRES**

**ROOF MOUNTED 2-WAY  
RADIO ANTENNA**

**HEAVY DUTY SHOCK  
ABSORBERS AND STUDS**

**HEAVY DUTY REAR SPRINGS  
— 6 OR 7 LEAF**

**OIL FILTER**

**W/S WASHERS**

**OUTSIDE REAR VIEW MIRROR**

**TOOL KIT AND JACK**

**BACK-UP LIGHTS**

**LEECE-NEVILLE ALTERNATORS**

**POWR-LOK REAR AXLE**

**RIGHT HAND SUN VISOR**

**RIGHT REAR DOOR  
REMOTE CONTROL**

**CAR TOP CARRIER**

**BACK-UP BUZZER**

**SPOT LAMPS**

Prices Quoted on Request

**Designers and Builders of Automobiles for Over 35 Years**

# FILL OUT AND MAIL THIS CARD TODAY!

cut along dotted line

I am interested in the performance and economy of Checker Automobiles.

Please check:  Send your Sales Representative.

Send more information related to information given below.

Name..... Title.....

Company Name .....

Address .....

City..... Zone..... State.....

Type of business.....

Number of cars operated regularly.....

By ..... Give type of driver: Salesman, Service Man, etc.

Postage  
Will Be Paid  
by  
Addressee

No  
Postage Stamp  
Necessary  
If Mailed in the  
United States

**BUSINESS REPLY CARD**

First Class Permit No. 996, Kalamazoo, Michigan

**Checker Cab Manufacturing Corporation**  
**Kalamazoo, Michigan**



cut along dotted line

One owner of a fleet of Checker  
Automobiles gave this report:  
"The Checker is the first car we  
have put on the street that doesn't  
come back the same day for ad-  
justments and repairs!"

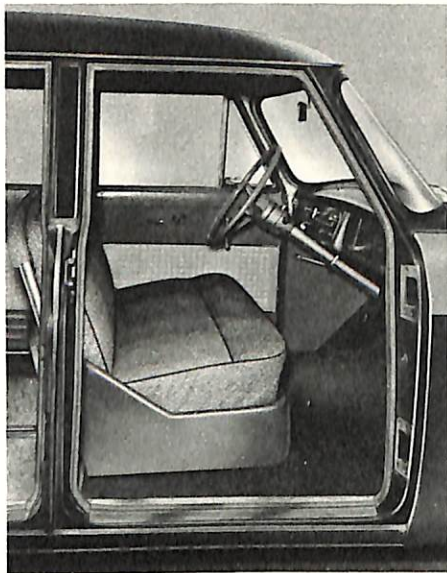
# Checkers SHORTER THAN THE "BIG THREE"

Commercial and industrial FLEET OWNERS prefer Checker's HIGH ROAD CLEARANCE, EASY ENTRANCE AND EXIT, durability, maneuverability, economy, riding comfort and safety. Overall length is less than the three most popular pleasure cars, still you are riding com-

30% MORE PASSENGER SPACE

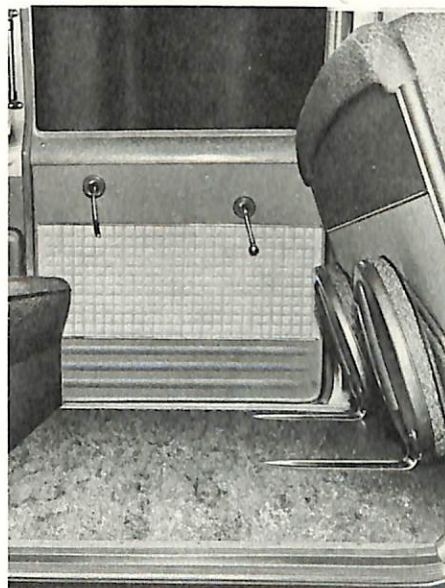
fortably between the front and rear wheel suspension. And, Checkers offer 30% more passenger space inside than in other 5-passenger pleasure cars, which is accomplished by moving the engine forward, reducing the front and rear overhang, plus unique designing.

## FRONT COMPARTMENT



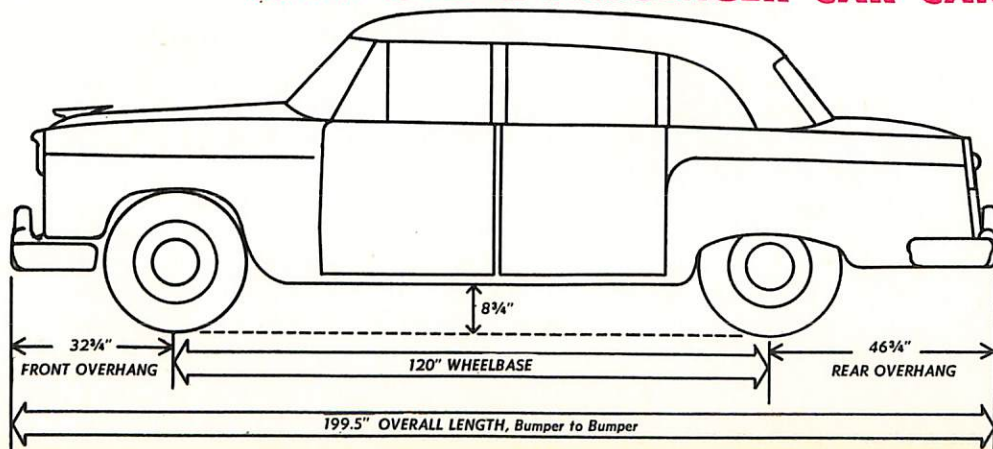
Here driver and passengers find beauty, comfort and efficiency, with easy-to-clean and easy-to-maintain interiors. Trim is of the latest two-tone Vinyl materials used in automobile designing for ultra-modern interiors. This compartment is insulated from engine heat and noise by a heavy fireproof fibre glass pad. A dual purpose defroster assures clear vision when needed; and when ducts are open in warm weather they provide outside fresh air. These are a few of many reasons why Checker Automobiles will continue to be in operation in greater numbers here and in many countries throughout the world.

## REAR COMPARTMENT



No other passenger car of comparable size can match Checker's seating capacity. Rear seat for 3 passengers, front seat for driver and 2 passengers; and OPTIONAL EQUIPMENT of 2 new auxiliary seats, when not in use, fold out of the way, providing a flat floor of 30" from front of rear seat to back of driver's seat, for luggage, sample cases, etc. With auxiliary seats in use, passengers face curb at 45° angle, freeing their knees, affording easy entrance and exit. Note flat floor — no tunnel or humps to trip over — what other car offers this exclusive Checker feature? The over-size bulkhead type heater is standard equipment.

## WHAT OTHER PASSENGER CAR CAN MEET THESE DIMENSIONS ?



And with auxiliary seats the capacity is increased to 8 passengers!

The Checker wheelbase is only 120"  
Overall length is only 199.5"  
Ground clearance is 8 3/4"  
Diameter of turning circle is only 37'

Compare these Checker advantages with:

Car "F" overall length 202"; turning circle 40' 1"  
Car "P" overall length 204.6"; turning circle 42' 6"  
Car "C" overall length 209.1"; turning circle 37' 5"

**Streamlined Exteriors . . . Spacious, Beautiful Interiors**

1957  
20-

# Checker PERFORMANCE IS PROVED

Checker is an acknowledged "Specialist" in the designing and manufacture of automobiles which offer less than conventional road space with maximum inside passenger space. Checker's performance is proved by these reports from owners:

**NEW YORK CITY:** "Drivers like the Checker. The car handles well in traffic. Drivers say they're not tired at the end of a day's work . . . so they work 6 days a week instead of 5 . . . With the Checker you actually walk in."

**COLUMBUS, GEORGIA:** "Our past experience prompted our initial purchase of the new Checker 'sight unseen.' And we can truthfully say that this car has lived up to all expectations. Fifteen months ago we purchased five standard transmission Checkers. The five Checkers have accumulated an average of 110,000 miles. We have had no rear end failures or clutch replacements. Our maintenance experience with Checkers has always been most satisfactory."

**HOLLYWOOD, FLORIDA:** "Our two Checkers with automatic transmissions are giving a good account of themselves daily after some 43,000 miles. Major units have operated trouble-free. Maintenance costs have been consistently low. Drivers like their easy handling. The solicitous attention shown us by your Service Representatives has been outstanding."

**ALLENTOWN, PENNSYLVANIA:** "We have been buying Checkers since 1950. So, we have learned to take certain things for granted with Checker cars: economy of operation, low maintenance cost and good gasoline mileage . . . We have 9 units in our operation, with standard transmissions and power brakes. In the 18 months we have run them, we have run up mileages of about 75,000 miles each. Right now we average about 15 miles per gallon of gas in the city . . . We appreciate particularly the many safety features built into the car. So do the passengers."

21-57

## Checker SALES AND SERVICE

Checker "service" to Checker owners is as outstanding as the automobile. Meticulous and complete attention is given owners of Checkers, through strategically located warehouses, parts departments, service depots, and experimental laboratories. Principal service points are:

KALAMAZOO, MICHIGAN  
Checker Cab Mfg. Corporation  
J. B. Copeland  
2016 No. Pitcher Street

NEW YORK 23, NEW YORK  
Checker Cab Sales Corporation  
Nat Freedman  
315 West 68th Street

Checker Cab Sales Corporation  
75 Washington Street  
Brookline, Massachusetts  
Gene Kovacs

CHICAGO, ILLINOIS  
Checker Cab Sales Corporation  
Joseph McMath  
1157 West Monroe Street

DETROIT, MICHIGAN  
Checker Cab Sales Corporation  
James Temple  
15631 Plymouth Road

### Checker Cab Sales Representatives in other cities:

The Imperial Corp.  
3919—14th St., N.W.  
Washington, D. C.

L. L. Poor  
701 Forsyth Bldg., S.W.  
Atlanta, Georgia

Ralph Limes  
Helm Hotel  
Bowling Green, Kentucky

Edwin L. Adams  
P. O. Box 104  
Paradis, Louisiana

Floyd M. Snyder  
3719 So. 52nd Street  
Lincoln, Nebraska

Paul A. Hutmacher  
3335 Hudnal  
Dallas, Texas

Edward Lathan, Jr.  
7 Mayfair Drive  
San Francisco, California

P. R. Gorham  
2611 Minnesota Ave.  
Billings, Montana

PLUS 14 OTHER PARTS LOCATIONS WITH MORE BEING ADDED MONTHLY!

57

# CHECKER CAB MFG. CORP., KALAMAZOO, MICH.

Designers and Builders of Automobiles for Over 35 Years