

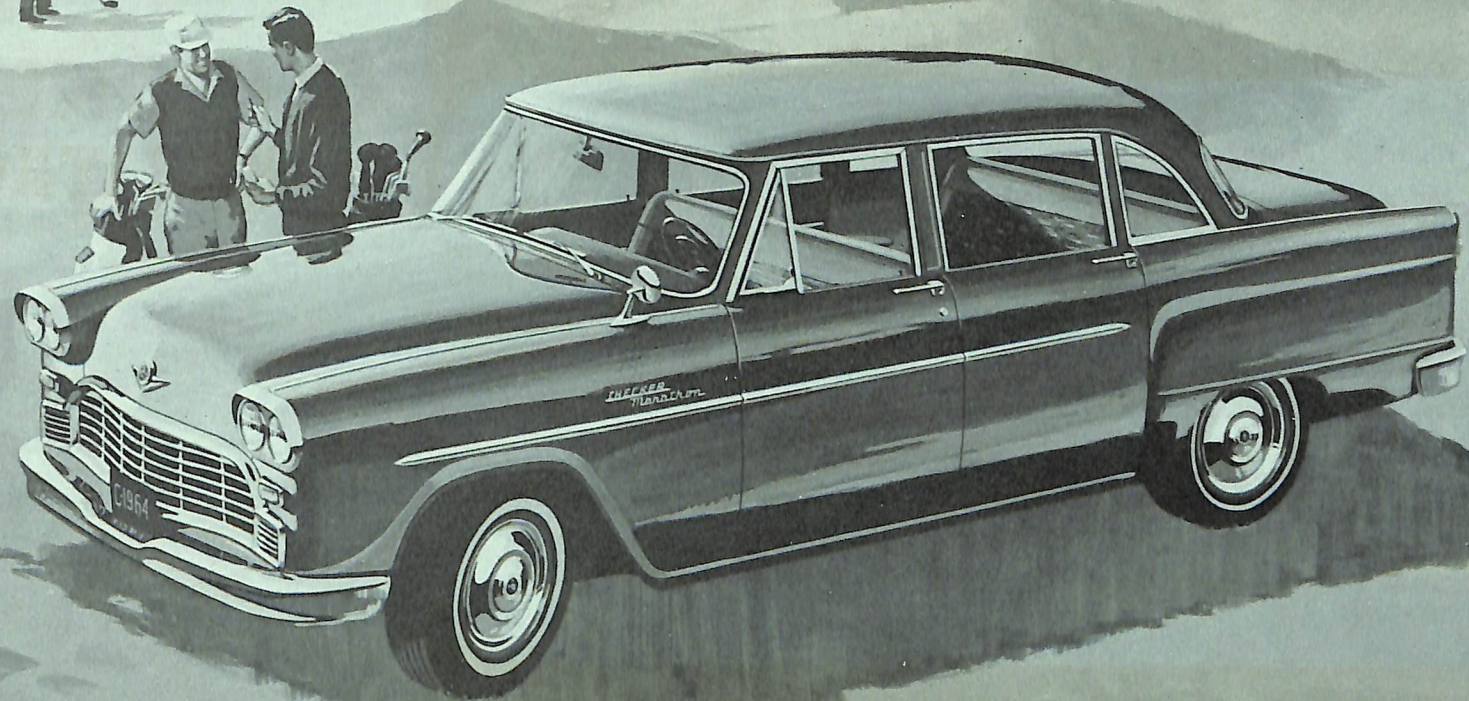
IF YOU LIKE TO  
KEEP A CAR  
5 YEARS OR MORE,  
GET THIS:

The Checker Marathon was created for you! Built in limited quantities in Kalamazoo, Michigan, the Checker Marathon was designed, engineered and manufactured to provide extra comfort, extra room, extra reliability for a longer time! Originally built for rugged and demanding taxicab service, the Checker has proven itself on all types of roads, in all kinds of weather, in every usual and unusual driving situation. While not designed to compete with the mass production cars, the Checker Marathon fulfills the need for a truly practical automobile. Built to last longer and built to endure styling changes of other cars—the Checker was designed for people who appreciate extra value and extra satisfaction in driving and owning a better automobile.

# CHECKER MARATHON

*4 Door Sedan*

The Checker is less than 200 inches over-all, yet is the only 4 door sedan that seats 8 adults comfortably—six in deep seated luxury, two more on fold-away auxiliary seats. You sit higher and at ease in Checker's more comfortable position-perfect seats. Passengers appreciate the living room size interior—30% larger than the ordinary 4 door sedan—the flat rear floors, the extra headroom and leg-room. Built on a shorter 120" wheelbase, the Checker Marathon is easier to park, U-turns in a 37 foot street and offers far greater maneuverability and handling ease than with ordinary cars.



Higher, wider square door openings . . . from top to toe . . . allow you to enter and leave without hitting your head, without stooping, without embarrassment. The flat rear floors mean no drive shaft tunnel to trip over—you have more headroom, more legroom and more hiproom. A Checker is built-to-last—built to take it. A super-safe Double Channel X-Brace Frame, combined with a super-strong chassis, means greater stability—more safety—outstanding comfort. Bolt-on fenders mean less costly repair—the use of regular gas in Checker's huge 23 gallon fuel tank means more savings with fewer fuel stops. While Checkers rarely change, they constantly improve with the improvements being made on the inside, where they reflect even greater safety, value and long life.

# CHECKER MARATHON

4 Door Station Wagon

This Checker Marathon Station Wagon is built on the same production line as the world-famous Checker taxicab. There are no rear wheel wells to take up valuable space—no hump in the floor to trip over. An extra wide, lower level tail gate opening means you can load more—easier, safer and faster. No high fashion flash or dash here—just solid blue chip soundness and quiet dignity.



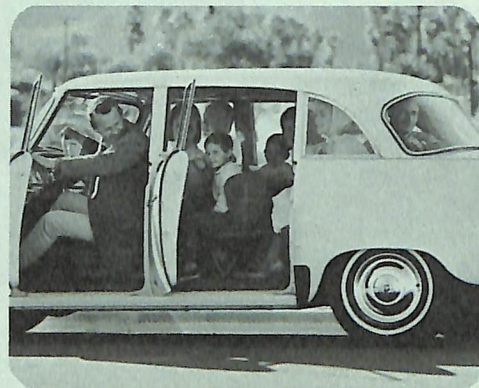
## BUILT FOR COMFORT!

Checker's higher, wider, square door openings mean you enter and leave without hitting your head or hurting your back—you get in and out of a Checker with dignity and ease.



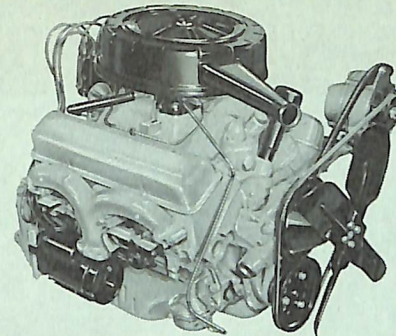
## BUILT FOR SAFETY!

Taxi-proven, extra strength parts used throughout! The driver sits higher, has a better view of the road, and faces a simple, classically arranged instrument panel with safety padded dashboard.



## BUILT TO LAST!

Only Checker has the extra strong, extra rugged double channel X-Brace Frame. Only Checker provides over 40 years of fleet-proven, taxi-tested, long life features; only Checker offers proven low cost maintenance and proven taxicab economy.



**Marathon 195 h.p. V-8.** Now—a 195 h.p. V-8 power plant that is fast, flexible and responsive, yet thrives on lower cost regular fuel! It's Checker's new 283 cu. in. engine with all the go-go-go you could possibly want or need . . . and all the long, long life and economy that Checker is so well known for. This performance-wise power plant is rarin' to go in any weather, under any and all driving conditions. It puts the Checker Marathon in a new class of car—durability and economy PLUS action! Optional at extra cost.

### STANDARD EQUIPMENT INCLUDES:

Alternator ■ Cigarette Lighter ■ Closed Crankcase Ventilator ■ 6 Cylinder 140 h.p. Overhead Valve Engine ■ Directional Signals ■ Double-Acting Shock Absorbers ■ Double Channel X-Brace Frame ■ Dual Sun Visors ■ 23 Gallon Gasoline Tank ■ Heater and Defroster (Fresh Air Type) ■ Independent Coil Front Suspension ■ Long-Life 11" Single Plate Clutch ■ Padded Instrument Panel ■ 7:10 x 15, 2 Ply Blackwall Tires ■ Step-On Parking Brake ■ Three speed Synchro-mesh Transmission ■ Sure Stop Brakes ■ Undercoating

Specifications subject to change.

**Marathon Economy 6.** Proven under every driving condition known, the new, higher spirited, short stroke, thrifty six is an economy-minded marvel. Regular gas? Of course! Economy? None better! Dependability? Proven! Proven in cars and cabs, in summer and winter, in city driving and country driving. This new 140 h.p. overhead valve six Checker engine is a totally dependable, highly economical performer. Standard equipment in all Checker Marathon Sedans and Station Wagons.

### OPTIONS INCLUDE:

Air Conditioner ■ Auxiliary Rear Seats (sedan only) ■ Dual Range Automatic Transmission ■ Tinted Glass, Heavy-Duty Alternator (Standard with Air Conditioner) ■ Overdrive Transmission ■ Power Brakes ■ Power Front Seat ■ Power-Lok Rear Axle ■ Power Steering ■ Power Tail Gate Window (station wagon only) ■ Power Windows ■ Rear Seat Forward (sedan only)

Printed in U. S. A.



*Checker Custom Limousine*



*Checker Taxicab*



*Checker  
Aerobus Limousine*

*the family of  
built-to-last*  
**CHECKER** *vehicles*



**CHECKER MOTORS CORP.**

Kalamazoo, Michigan

1965

