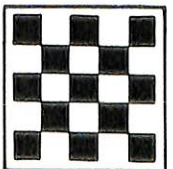


CHECKER

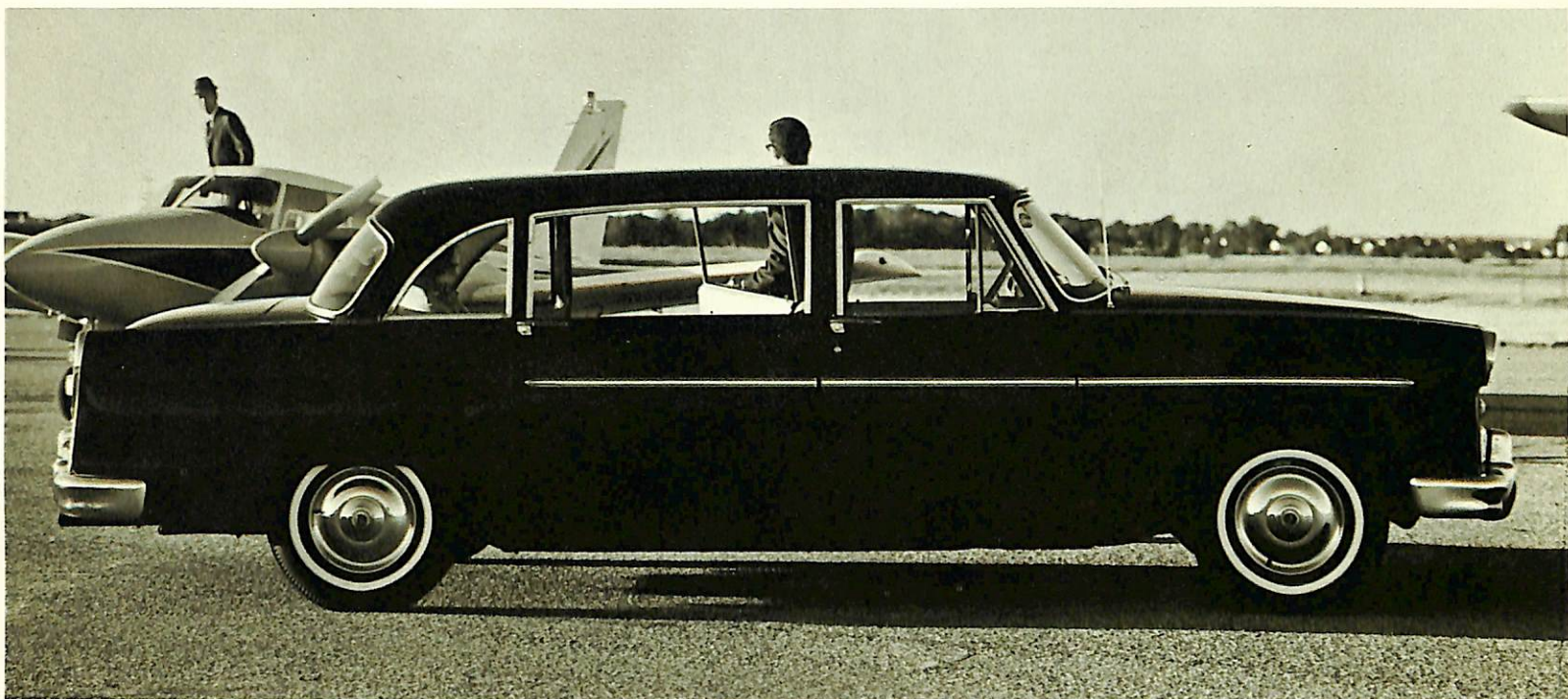


Checker, known and respected throughout the world, now offers a complete line of handsome, practical, built-to-last motor vehicles especially created for world markets. Made in Kalamazoo, Michigan, U. S. A., Checker offers a unique combination of graceful styling, riding comfort and interior spaciousness. Checker's operating economy and exceptionally long life is attested to by thousands of fleet records and billions of the toughest, most demanding fleet miles. Take the wheel of a Checker and you'll know why—regardless of road conditions, climate or passenger load—Checker is the one automobile that is built for comfort, convenience and versatility and built to endure.

Checker Motors Corporation, Kalamazoo, Michigan 49007 U.S.A.



CHECKER MARATHON DELUXE-



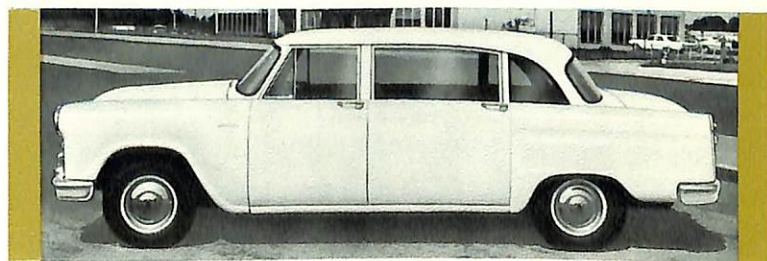
Especially engineered and built for the world markets, the Checker Marathon Deluxe has achieved new heights in elegance, craftsmanship and performance. The classic European-influenced styling and highly functional body lines remain in style year after year reflecting Checker's long-standing policy of non-obsolescence. Built on a 129" wheelbase, the Marathon Deluxe offers incomparable smoothness and riding comfort; interior room and luxury appointments that you would expect to find only in cars costing thousands of dollars more. With the luxurious, forward-facing, three passenger twin auxiliary seats, there is room for nine adults, with an abundance of head room,

hip room and leg room. Extra-high, wide door openings for easy entry and exit, a rear floor that is practically flat and deep-cushion, chair-high seats provide that extra measure of comfort and convenience that is found only in a Checker. A custom built sliding glass driver's partition is optional at extra cost. Checker has eliminated the useless overhang in both front and rear to provide greater maneuverability and a shorter turning radius; the exclusive double channel X-brace frame, the fleet-proven parts—the extra quality and extra care that go into each Checker vehicle mean a safer car—a longer lasting car—a better value for the buyer.

CHECKER A-11E 9-PASSENGER/4-DOOR SEDAN

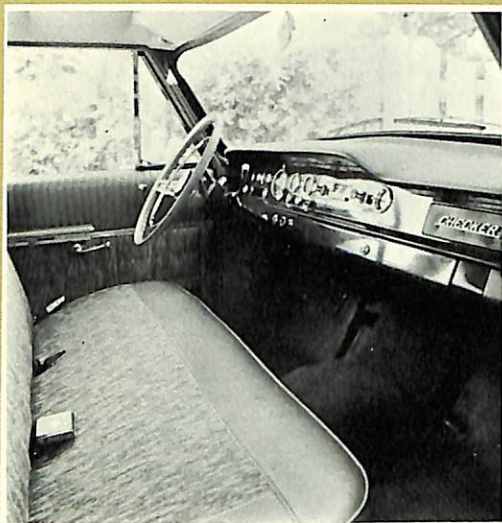
Built on the longer 129-inch wheelbase, the Checker A-11E carries nine people in utmost safety and comfort and at lowest cost. Features include the doubly rugged, double channel X-brace frame; style continuity that lasts year after year; higher, wider door openings for easiest entry and exit; a rear floor that is practically flat; and the extra-care, extra-quality Checker construction that has been proven in billions of miles of rugged fleet operations.

The Checker model A-11E includes sculptured foam cushions and full coil springs, carefully upholstered with highly durable fabrics. Big, square, extra-wide auxiliary seats . . . wide enough for three extra persons, fold neatly away when not in use.



Based on 45 years of rugged day-in, day-out fleet operations, the Checker A-11E sedan means outstanding dependability and economy for all your demanding automotive needs. The perfect vehicle for taxis, for use in "for-hire" businesses, as railroad fleet cars for work crews, inter-city transportation and other uses where comfort, safety and convenience are vital.

A-12E 9 PASSENGER SEDAN



In front of the beautiful padded dashboard is an economy-proved overhead valve six cylinder engine with 230 cubic inch engine displacement. Also available: the regular gas (low octane) 283 cubic inch V-8, ideal for all-around performance and economy; the high-spirited 327 cubic inch V-8, designed for fast pick up and high performance; both optional at extra cost.



The richly appointed interior of the Checker Marathon Deluxe includes sculptured foam cushions over full coil springs, carefully upholstered with elegant yet highly durable fabrics. Added touches of comfort and luxury include new soft headlining and attractive, long-wearing carpeting. A custom built sliding glass driver's partition is optional at extra cost.



The twin, forward facing auxiliary seats form one complete seat and provide adequate room for three adults with limousine comfort. Extra-wide (132.08 cm.—52 inch), the auxiliary seats are fully cushioned with sturdy, shoulder-high backs. When not in use, they fold flat against the back of the front seat and their base support forms a footrest for back seat passengers. Upholstered in a wide choice of long-wearing luxurious fabrics.

MODEL A-12E 4-DOOR MARATHON DELUXE SPECIFICATIONS

140 H.P., 230 CU. IN. OVERHEAD VALVE SIX ENGINE.

Type: 6 Cylinder Overhead Valve • Horsepower: 140 BHP @ 4400 rpm • Compression Ratio: 8:25 to 1 • Piston Displacement: 230 cu. in. • Carburetor: Downdraft, with automatic choke • Recommended Fuel: Regular • Cooling System: 12 qts. with heater

SUPER SAFE SURE-STOP BRAKES.

OIL FILTER.

FLEET-PROVEN in billions of miles.

Re-circulating Ball-type STEERING.

DOUBLE CHANNEL X-BRACE FRAME.

INDEPENDENT COIL FRONT SUSPENSION SYSTEM.

Long-life, HEAVY-DUTY 11" CLUTCH.

HEATER-DEFROSTER, part of Checker's all-season heating and ventilating system.

SYNCHRO-MESH TRANSMISSION

Wide, easy riding, heavy-duty REAR SPRINGS.

PRACTICAL TWO PIECE FENDERS—allow for fast and inexpensive removal and replacement.

8.15 x 15 4-PLY TIRES.

23-GALLON FUEL TANK.

UNDERCOATING.

DIRECTIONAL SIGNALS.

SAFETY PADDED DASHBOARD.

CIRCULAR DIRECT READING INSTRUMENT GAUGES.

CHAIR-HIGH SEATS for extra comfort.

HEAVY-DUTY PARTS THROUGHOUT.

SAFETY PLATE GLASS in all windows.

MEASUREMENTS

(in inches unless otherwise indicated)

Wheelbase.....	129
Over-all Length.....	208.33
Over-all Width.....	76
Over-all Height.....	62 $\frac{3}{4}$
Shipping Weight.....	3,700 lbs.
Front Headroom.....	34.75
Bottom of Doors to Ground (Loaded).....	11.75
Ramp Breakover Angle.....	15°
Angle of Approach.....	23°
Angle of Departure.....	15°
Minimum Road Clearance at Rear Axle.....	7.50
	at diff.
Legroom, Front.....	42
Legroom, Rear.....	57
Front Seat Height.....	14
Rear Seat Height.....	13
Auxiliary Seat Height.....	13
Auxiliary Seats Over-all Width.....	52
Overhang, Front.....	32.75
Overhang, Rear.....	46.75
Front Hiproom.....	62.25
Rear Hiproom.....	52.50
Windshield Width.....	58
Back Window Width.....	58.87

Optional power and convenience accessories (available at extra cost)

Optional Engine—283 cu. in.

8 Cylinder Overhead Valve (V-8)
195 BHP @ 4800 rpm
9:25 to 1
283 cu. in.
Downdraft, 2 barrel,
with automatic choke
Regular
17 qts. with heater

Optional Engine—327 cu. in.

Type: 8 Cylinder Overhead Valve (V-8)
Horsepower: 250 BHP @ 4400 rpm
Compression Ratio: 10.05 to 1
Piston Displacement: 327 cu. in.
Carburetor: Downdraft, 4 barrel,
with automatic choke
Recommended Fuel: Premium
Cooling System: 17 qts. with heater

AUXILIARY SEATS enable three additional people to ride in complete comfort. Newly designed, wider seats (52" over-all width) are shoulder high and face forward, yet provide adequate legroom for all passengers.

DUAL-RANGE AUTOMATIC TRANSMISSION provides maximum power, efficiency and response.

AIR CONDITIONING comfortably cools and filters all the air. Quickly cools, ventilates, dehumidifies and removes dust, dirt and pollen.

SEPARATE UNDER SEAT HEATER • POWER STEERING • POWER BRAKES • RADIO AND ANTENNA • TINTED GLASS • BACK-UP LIGHTS • PARKING BRAKE SIGNAL • OUTSIDE MIRROR • WINDSHIELD WASHER • DELUXE CHROME WHEEL COVERS • OIL FILTER • 8-PLY RATED TIRES • WHITE SIDEWALL TIRES • CHROME HAND RAIL • ELECTRIC CLOCK

CHECKER AEROBUS LIMOUSINE



CHECKER 9-Passenger 6-Door AEROBUS LIMOUSINE

Model A-12W6M With a full 154½ in. wheelbase and an overall length of 235¼ in., this Checker 9-passenger Aerobus is an outstanding service vehicle for hotel, resort, inter-city, airport and other passenger use. Not a "stretch-out" but built from the ground up as a multi-passenger vehicle of amazing strength, stamina and long life. As luxurious as a limousine, it also offers the comfort, convenience and operating economy that has made Checker vehicles famous.

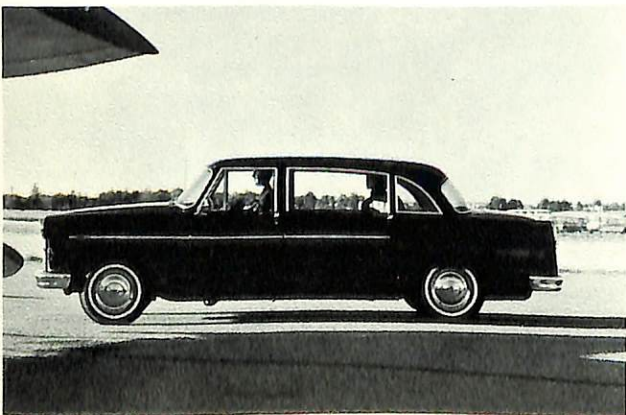
Standard equipment on both Aerobus models includes power steering, power brakes and heavy-duty 185 H.P. 327 cu. in. V-8 engine.

CHECKER 12-Passenger 8-Door AEROBUS LIMOUSINE

Model A-12W8M Built from the ground up on a super-strong, super-safe foundation, the Checker Aerobus features a double channel double X-brace frame—engineered for extra strength and extra comfort. With room for 12 passengers and their luggage, it's the perfect answer where a station wagon is too small and a bus is too large!

The wheelbase is 189 in., with the over-all length 269¾ in., yet it handles as easily as a standard size sedan. Flat floors and higher, wider door openings assure maximum passenger comfort. Maintenance and repair costs are remarkably low, assuring fleet operators years of economical payload operations.

CHECKER Custom LIMOUSINE



This richly-regal 8-passenger limousine, preferred by increasing numbers of distinguished personages, reflects the ultimate in elegance. In addition to the world-renowned Checker reputation for quality and durability, this classic example of motor car excellence offers ageless styling and custom interiors. Features include handsome gray upholstery, divided rear seat with center armrest, and 129-inch wheelbase. Available with fully upholstered, sliding glass driver's partition (optional).

...AND CHECKER MARATHON



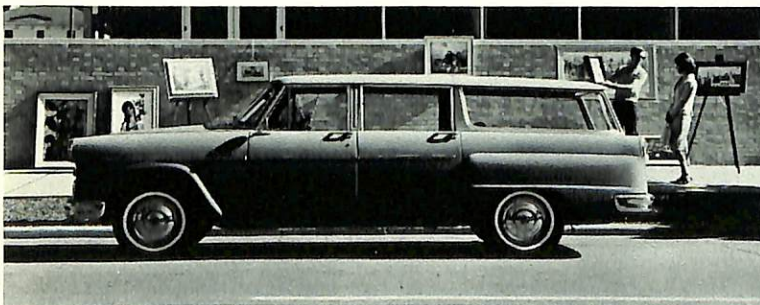
No other car is built like Checker. Here's why: Engineered and built on the same lines and at the same time as world-famous, billion-mile Checker fleet cars, the Marathon has found a growing market among people from all walks of life—people who recognize the unique and practical features of a car that was built for comfort . . . and built to last.

Unlike other cars, the 200" long Checker has no useless overhang in the front or the rear; all usable space is inside to provide more room, more comfort for passengers. The Marathon is a cinch to park; will U-turn in a street less than 38-feet wide.

Only a Checker Marathon gives you man-size door openings;

you enter and leave without back-breaking contortions. Features include practically flat rear floors, a super-safe, super-strong, double channel X-brace frame and interiors 30% larger than ordinary cars. Style continuity, without yearly model changes helps maintain your investment.

The Checker Marathon combines the finest road stability of any full-size car in the industry with comfort, economy and performance. The new Marathon is truly America's most improved . . . most proven car; built to last—built to endure—built to the greatest standards of comfort in the automobile industry.



Marathon 4-Door Sedan

Model A-12 120-inch wheelbase with 2 auxiliary fold-away seats (optional) for 8-passenger comfort.

Marathon 4-Door Station Wagon

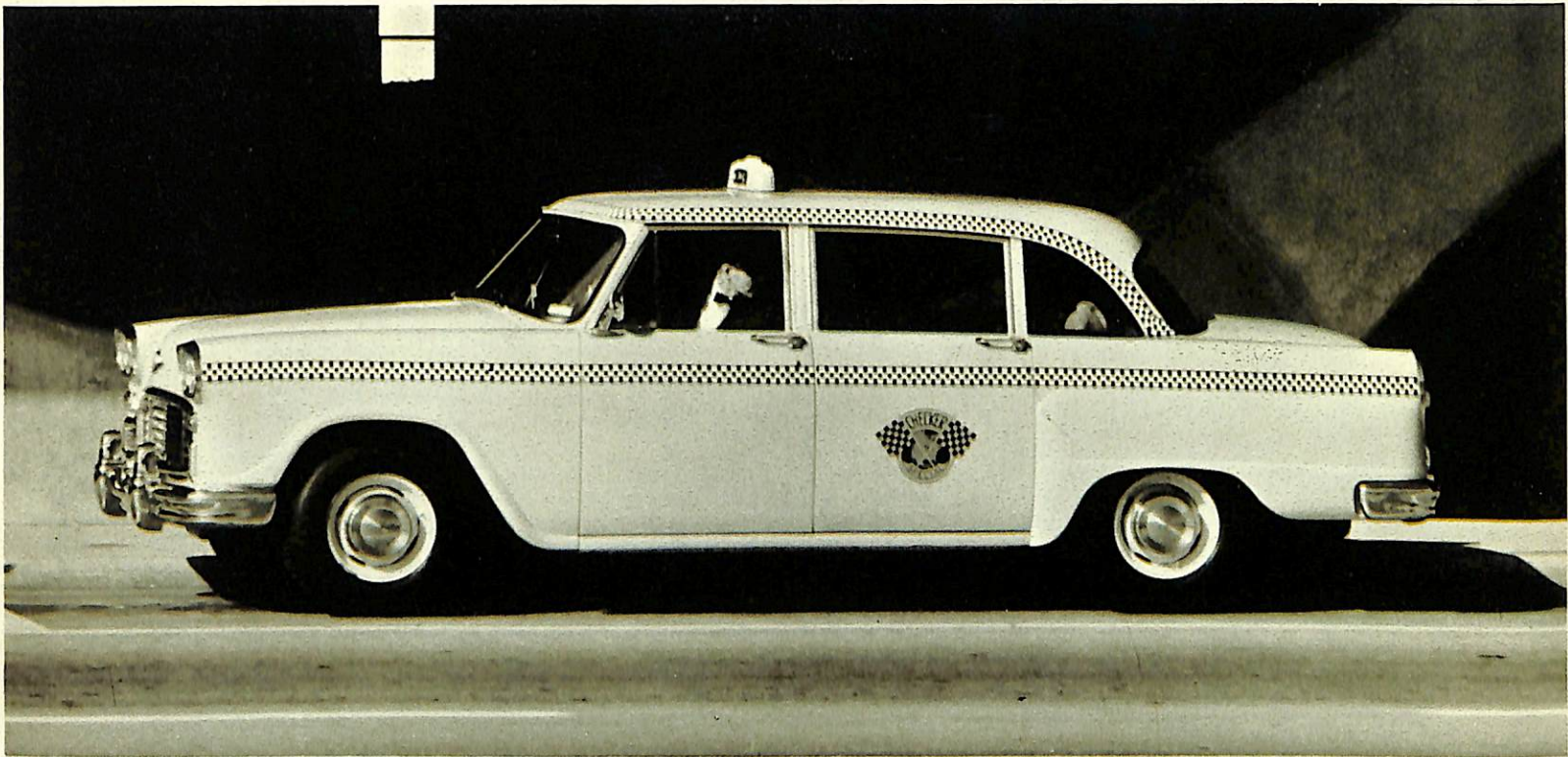
Model A-12W Flat rear floors, no space robbing wheel wells, rear seat folds down flat to give over 93 cubic feet of cargo space.

STANDARD EQUIPMENT Model A-12 and A-12W

6 Cylinder 140 H.P. Overhead Valve Engine	Double-acting Shock Absorbers
Straight Synchro-Mesh Transmission	23-gallon Gasoline Tank
Long-life 11" Single Plate Clutch	Padded, No Glare Instrument Panel
Recirculating Ball-Type Steering	Fleet-proven Heavy Duty Parts
Sure-Stop Brakes	Directional Signals
Double Channel X-Brace Frame	Heater and Defroster (fresh air type)
Independent Coil Front Suspension	Chair-High Seats
Wide, Easy-riding Rear Springs	Undercoating
	195 H.P. V-8 Engine optional at extra cost
	250 H.P. V-8 Engine optional at extra cost

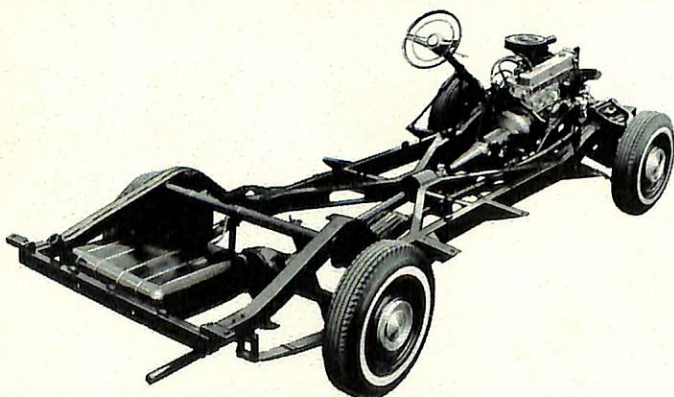
Options include power steering, power brakes and automatic transmission.

THE WORLD'S LEADING TAXICAB



CHECKER Model A-11 The most popular taxicab . . . the world's only *real* taxicab . . . designed and built for the utmost in driver and passenger comfort, as well as profitable operation. Driver controls are sensible, practical, easy-to-use. Passenger comfort is reflected in the rear floor that is practically flat, extra-wide seats with plenty of room to relax, and wider and higher door openings that allow old and young alike to enter and leave with dignity and ease.

Proven through nearly 50 years of continuous operations and billions of miles of challenging stop-and-go driving, Checkers are designed and built for maximum profitability and minimum upkeep. With two auxiliary folding seats (optional), there's room for eight (including driver) in complete comfort, whether for cross-city or cross-country transportation. Available with your choice of V-8 or 6 cylinder economy engines, both using inexpensive low-octane fuel.



- Re-circulating ball-type gear box. ■ Heavy-duty 11-inch single plate clutch. ■ Standard synchro-mesh transmission has extra large bearings for longer service. ■ Double-acting shock absorbers and heavy-duty, semi-elliptical 5-leaf springs. ■ Generous 23-gallon gasoline tank means less stops for refueling. ■ Safe, sure-stop self-adjusting brakes. ■ Double channel X-brace frame with 3 tubular and 2 channel cross members.

CHECKER Model A-11 Standard Specifications (in inches, unless otherwise specified)

Wheelbase	120	6 Cylinder 140 H.P. Overhead Valve Engine (8 Cylinder 195 H.P. V-8 Optional).
Over-all Length	199½	Options include power steering, power brakes and automatic transmission.
Over-all Width	76	
Over-all Height	62¾	
Turning Radius37 ft., 6 in.	

Checker Motors Corporation, Kalamazoo, Michigan 49007 U.S.A.

Over 45 years of fleet experience has helped create the Checker line of built-to-last vehicles

