

Checker Motors Corporation  
presents



a whole wide world of  
**Special Purpose Vehicles**



## The CHECKER Aerobus— the world's most successful multi-passenger limousine

This is the world-famous Checker Aerobus. Currently in service around the globe, the Aerobus—and only the Aerobus—provides the perfect answer to transporting up to 12 people (with bag and baggage) short or extended distances, safely, comfortably and economically.

The Checker Aerobus is successful be-

cause it is built for the purpose. Not a "stretch-out" or converted stock car, but *built-from-the-ground-up* to move people.

Checker Motors Corporation has built special purpose vehicles for nearly half a century . . . taxicabs that defy weather and time . . . fleet cars that provide the utmost in passenger satisfaction and operator effi-

ciency. The Aerobus, however, takes taxicab and fleet economy and convenience several steps beyond to provide a totally satisfactory service—with style and power never before offered in a commercial vehicle. The Aerobus is successful because it is built to last . . . built to highest standards of stability, safety and strength.



# Checker Aerobus

## Standard Equipment

- Heavy Duty 3-Speed Standard Transmission
- 327 cu. in. V-8 Engine; 185 h.p.
- 23-Gal. Capacity Fuel Tank
- Self Adjusting Power Brakes
- Power Steering with Re-circulating Ball Steering Gear
- Heavy Duty Alternator
- 80-Amp Battery
- Heater & Defroster
- 2 Floor Mounted Auxiliary Heaters
- Back-Up Lights
- Parking Brake Warning Light
- Windshield Washer
- Electric Windshield Wipers
- 2 Outside Mirrors
- Undercoating
- Heavy Duty Clutch
- Heavy Duty 15x6L Wheels with 5½ Bolt Circle
- Tires: 8.20x15 8-ply rated
- Front and Rear Service Brakes are 11" x 3"
- Brake Master Cylinder 1.125" Bore
- Heavy Duty Prop Shaft
- All Universal Joints Equipped with Lube Fittings
- Heavy Duty Rear Axle
- Axle Ratios: 3.54:1 and 4.10:1
- Heavy Duty Double Channel Double X-Brace Frame
- Front Stabilizer Bar
- Heavy Duty Shock Absorbers
- Heavy Duty Front Suspension
- 6-Door Units have Heavy Duty 2½" Wide 6-leaf Rear Springs
- 8-Door Units have Heavy Duty 2½" Wide 9-leaf Rear Springs
- Heavy Duty Forged Steering Spindle

## Specifications

	9 Passenger	12 Passenger
Wheelbase	154.5"	189"
Over-all Length	235.25"	269.75"
Over-all Width	76"	76"
Over-all Height	64.37"	64.37"
Curb Weight	4330 lbs.	4905 lbs.
Cargo Volume	40 cu. ft.	40 cu. ft.
Front Headroom	35.75"	35.75"
Bottom of Doors to Ground (Loaded)	12.05"	12.05"
Ramp Breakover Angle	12.5°	10.5°
Angle of Approach	18°	18°
Angle of Departure	17°	17°
Minimum Road Clear- ance at Rear Axle	7.8"	7.8"
Overhang, Front	34"	34"
Overhang, Rear	46.75"	46.75"
Rear Seats, Hiproom	64"	64"
Windshield Width	58"	58"
Back Window Width	45.25"	45.25"
Turning Diameter	47' 3"	56' 6"

## Engine Specifications

Type: V-8  
 Horsepower: 185 @ 4400 RPM  
 Torque: 305 ft. lbs. @ 2000 RPM  
 Piston Displacement: 327 cu. in.  
 Compression Ratio: 8.00:1  
 Piston Firing Order:  
 1-8-4-3-6-5-7-2  
 Fuel: Regular

**Also Available: Checker 6-door 9-passenger Aerobus.**

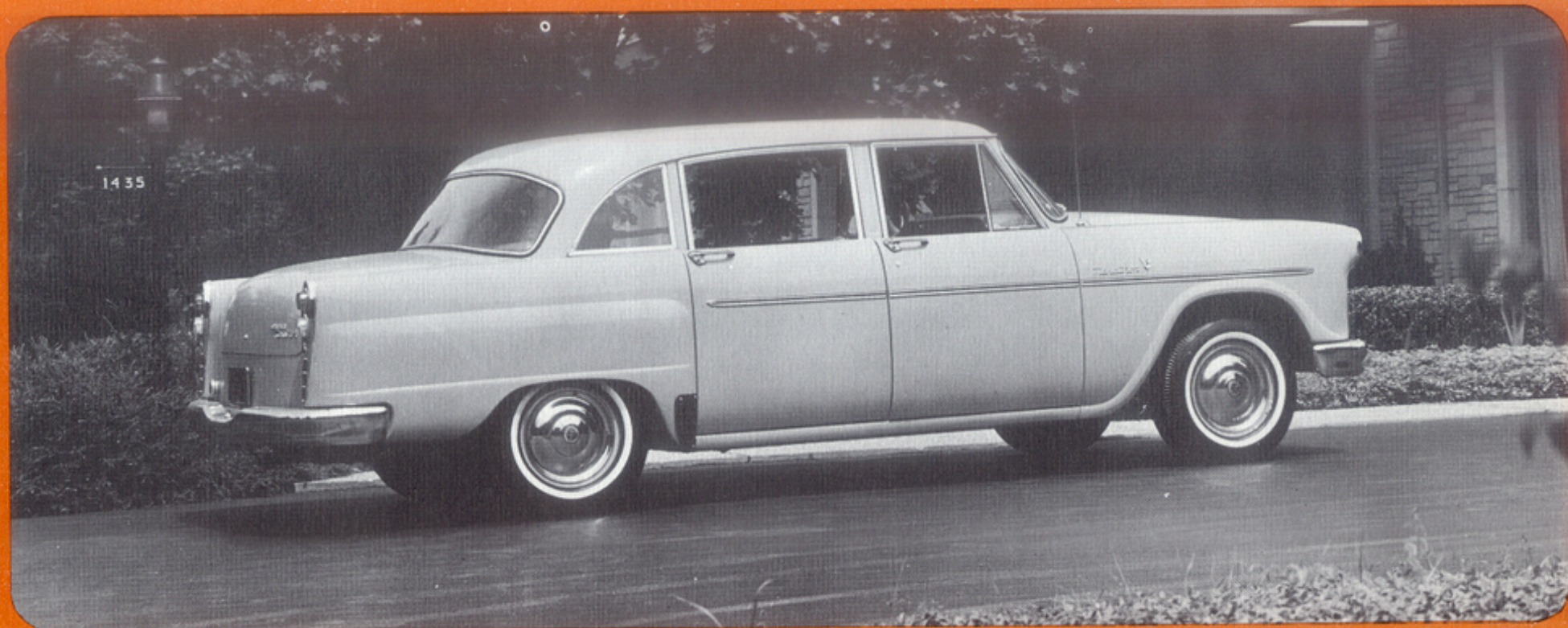
**Heavy-duty, three-speed automatic transmission available on both nine and twelve-passenger models.**



The huge Aerobus luggage compartment with room enough for a dozen or more pieces of large luggage plus many other parcels, can be partitioned off from the passenger area with plexiglass (optional). Horizontal and vertical strips of chrome plated copper (optional) prevent damage to windows and to the luggage.

## CHECKER'S DUAL BRAKE SYSTEM

The master brake cylinder is divided into two systems, both operating independently. Either system will stop the vehicle smoothly and safely. A warning light has been provided to warn of any malfunction in the dual master cylinder system.



## CHECKER Marathon 4-Door Sedan

No other car is built like Checker. Here's why: Engineered and built on the same lines and at the same time as world-famous, billion-mile Checker fleet cars, the Marathon has found a growing market among people from all walks of life—people who recognize the unique and practical features of a car that was built for comfort . . . and built to last.

Unlike other cars, the 200" long Checker has no useless overhang in the front or the rear; all usable space is inside to provide more room, more comfort for passengers. The Marathon is a cinch to park; will U-turn

in a street less than 38-feet wide. Only a Checker Marathon gives you man-size door openings; you enter and leave without back-breaking contortions. Features include practically flat rear floors, a super-safe, super-strong, double channel X-brace frame and interiors 30% larger than ordinary cars. Style continuity, without yearly model changes, helps maintain your investment.

The Checker Marathon combines the finest road stability of any full-size car in the industry with comfort, economy and performance. The new Marathon is truly Amer-

ica's most improved . . . most proven car; built to last—built to endure—built to the highest standards of comfort in the automobile industry.





## CHECKER A-11E 9-Passenger/4-Door Sedan

Built on the longer 129-inch wheelbase, the Checker A-11E carries nine people in utmost safety and comfort and at lowest cost. Features include the doubly rugged, double channel X-brace frame; style continuity that lasts year after year; higher, wider door openings for easiest entry and exit; a rear floor that is practically flat; and the extra-care, extra-quality Checker construction that has

been proven in billions of miles of rugged fleet operations.

The Checker model A-11E includes sculptured foam cushions and full coil springs, carefully upholstered with highly durable fabrics. Big, square, extra-wide auxiliary seats . . . wide enough for three extra persons, fold neatly away when not in use.

Based on over 45 years of rugged day-in,

day-out fleet operations, the Checker A-11E sedan means outstanding dependability and economy for all your demanding automotive needs. The perfect vehicle for taxis, for use in "for-hire" businesses, as railroad fleet cars for work crews, inter-city transportation and other uses where comfort, safety and convenience are vital.



## CHECKER Marathon 4-Door Station Wagon

This is the station wagon that is really built to last—really built to take it! A super-safe double channel X-brace frame—standard on all Checker cars—is combined with a perfectly-balanced, built-to-last chassis and a full-size, built-to-endure body—to provide greater stability, greater safety, longer life, outstanding comfort. Bolt-on fenders mean less costly repair and wide use of the strengthened fleet-proven parts are reflected in the thousands of extra miles and extra years of value built into every Checker.

Designed for maximum cargo capacity,

the Checker Marathon Station Wagon is practical, functional and ruggedly constructed. With the rear seat folded down, the wagon has more than 93-cubic feet of usable cargo space—96.75" long, 33.6" high, 49.6" wide. The flat rear floor has no transmission tunnel to cut cargo or passenger room. Checker's unique design, with no wheel wells, means more usable carrying capacity; wide loads can be placed flat on the floor, instead of suspended between wells . . . for easier, safer transporting. The exceptionally wide tailgate opening permits faster, easier

loading of wider and over-size loads. The wagon has the same practical 199½" length as the sedan, the same shorter turning circle. Like the sedan, it has deep spring, foam-rubber-padded seats over coil and zig-zag springs in both the front and rear.

Choose from two V-8 engines or the Standard OHV 6. All power and convenience options available.



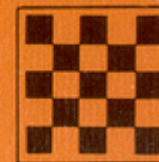
## CHECKER Taxicab

Model A-11. The most popular taxicab . . . the world's only *real* taxicab . . . designed and built for the utmost in driver and passenger comfort, as well as profitable operation. Driver controls are sensible, practical, easy-to-use. Passenger comfort is reflected in the rear floor that is practically flat, extra-wide seats with plenty of room to relax, and wider and higher door openings that allow

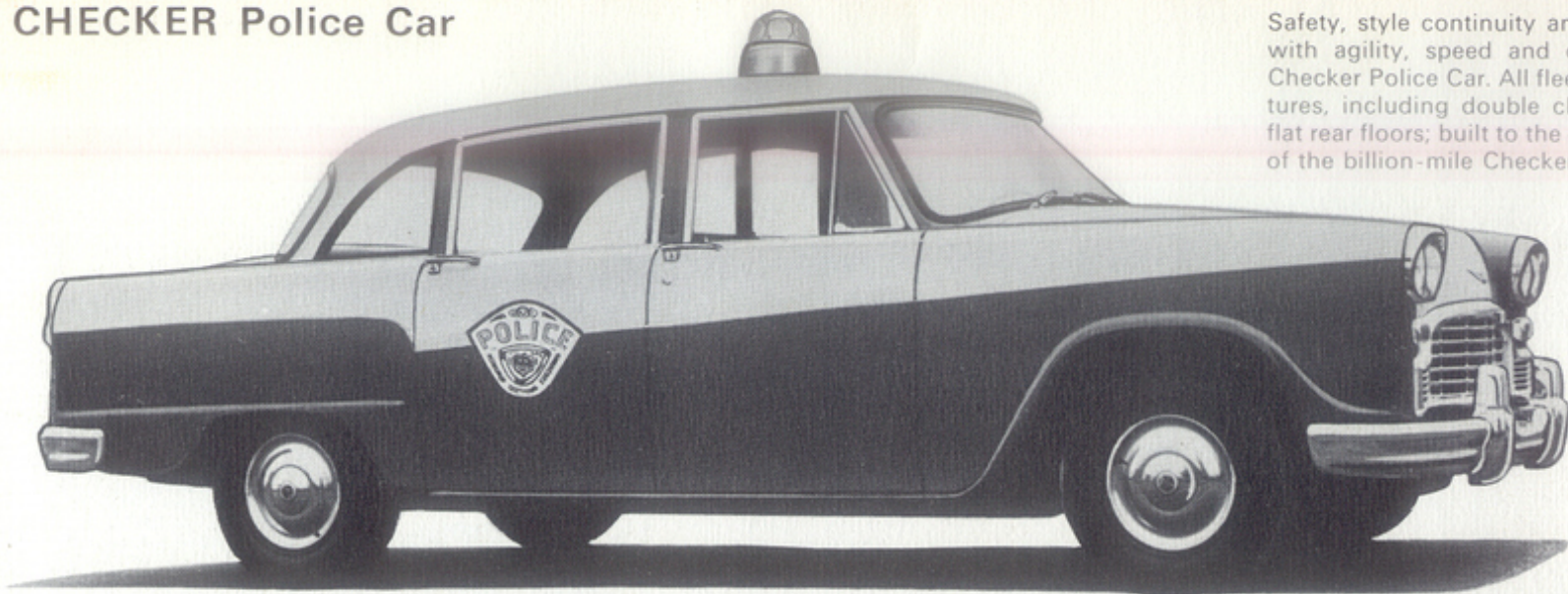
old and young alike to enter and leave with dignity and ease.

Proven through nearly 50 years of continuous operation and billions of miles of challenging stop-and-go driving, Checkers are designed and built for maximum profitability and minimum upkeep. With two auxiliary folding seats (optional), there's room for eight (including driver) in complete com-

fort, whether for cross-city or cross-country transportation. Available with your choice of V-8 or 6-cylinder economy engines, both using inexpensive low-octane fuel.

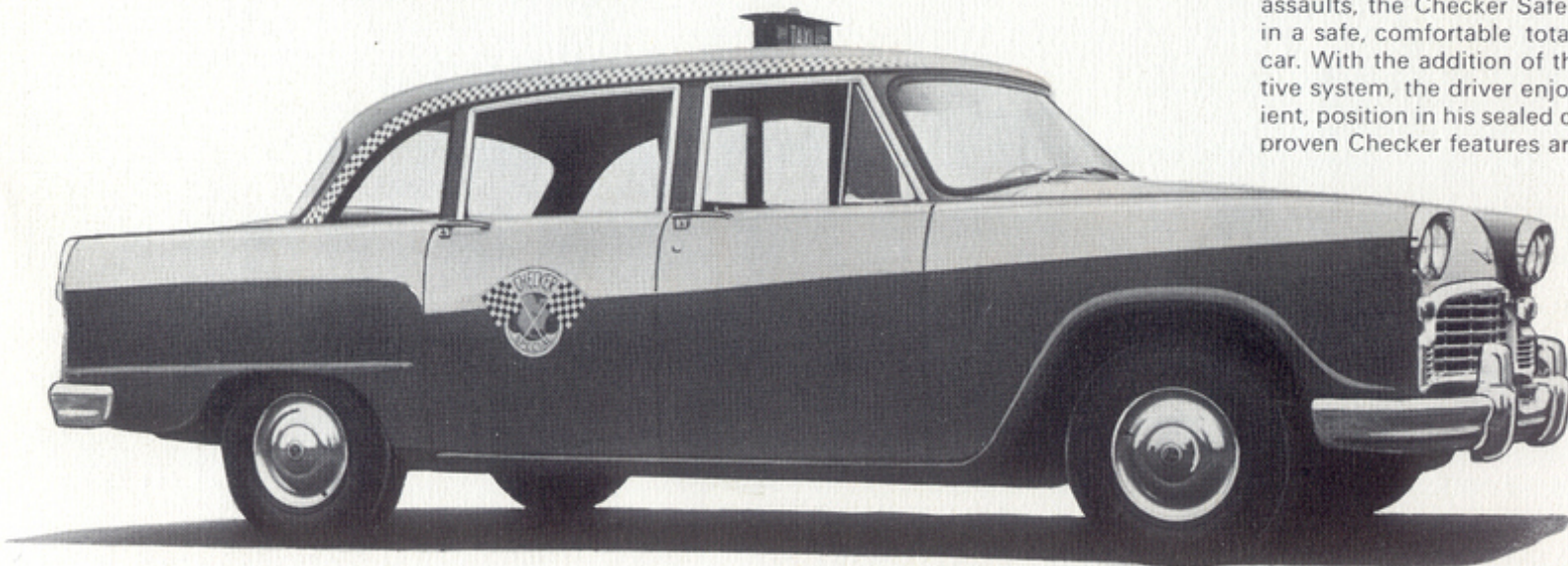


## CHECKER Police Car



Safety, style continuity and economy combined with agility, speed and durability—this is the Checker Police Car. All fleet-proven Checker features, including double channel X-brace frame, flat rear floors; built to the exacting specifications of the billion-mile Checker Taxicab.

## CHECKER Safe-Guard Taxicab



Designed to prevent hold-ups, muggings and assaults, the Checker Safe-Guard is the ultimate in a safe, comfortable totally reliable commercial car. With the addition of the Safe-Guard protective system, the driver enjoys a safe, yet convenient, position in his sealed compartment. All fleet-proven Checker features are standard.

87