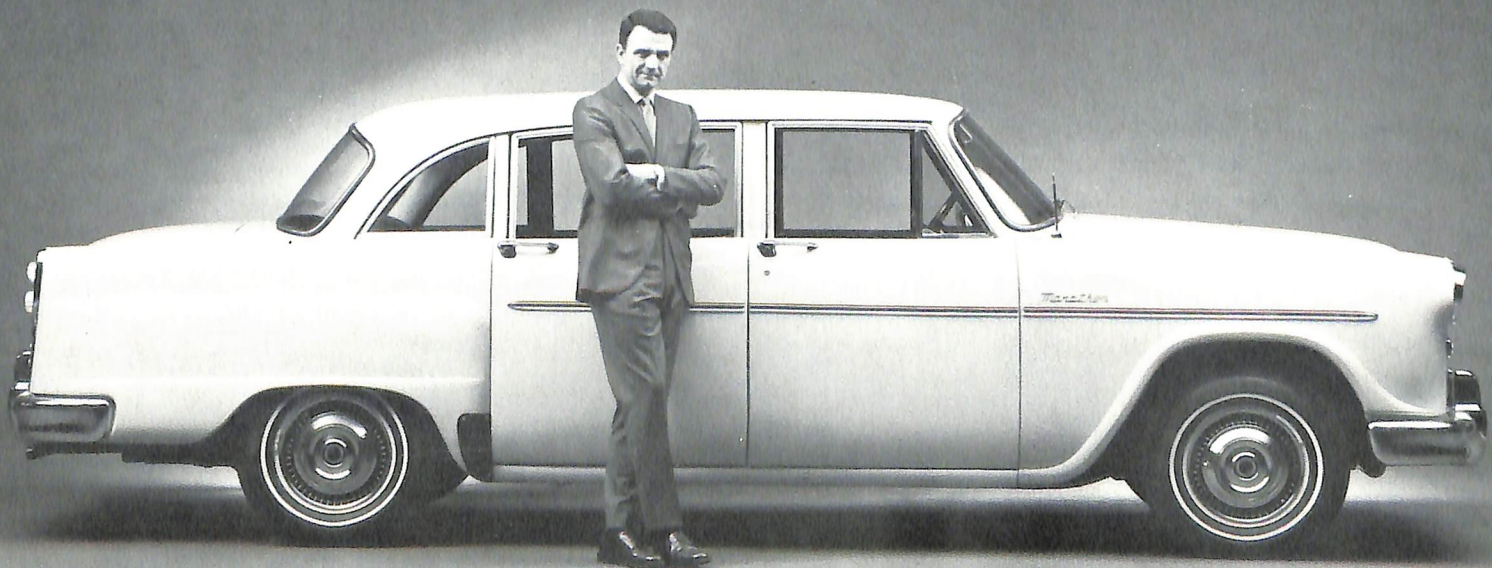


**Introducing  
the only American-built,  
diesel powered  
automobiles...  
the CHECKER DIESELS.**

Now from Checker Motors Corporation,  
an entire line of  
built-to-last fleet vehicles,  
engineered for maximum performance  
with the Checker "D" series option,  
incorporating the world-wide, proven  
4.236 Perkins Diesel.



# CHECKER.

**A totally different kind of car.**

Checker Motors Corporation has engineered and built a line of cars to provide maximum performance, utilizing the precision Perkins Diesel. Like all Checker fleet cars, the new diesel-powered vehicles are built to last, built to provide the greatest degree of comfort, long life and safety. CHECKER VEHICLES ARE THE ONLY AMERICAN-MADE PASSENGER AND FLEET CARS WITH A DIESEL ENGINE OPTION.

## CLASSIC STYLING.

The exterior of a Checker rarely changes. Its simple, classic lines reflect the concept of "form follows function." Because of this styling continuity, your investment in a Checker is not devalued by capricious styling changes of other manufacturers.

## CHECKER COMFORT.

Illustrated below is the interior of the Checker A-12E Marathon Deluxe Sedan.

Built on the longer 129-inch wheelbase, the Checker A-12E carries nine people in utmost safety and comfort and at lowest cost. All Checker-built cars are steel lined

for extra safety. Features include the doubly rugged, double channel X-brace frame; style continuity that lasts year after year; higher, wider door openings for easiest entry and exit; a rear floor that is practically flat; and the extra-care, extra-quality Checker construction that has been proven in billions of miles of rugged fleet operations.

The Checker model A-12E includes sculptured foam cushions and full coil springs, carefully upholstered with highly durable fabrics. Big, square, extra-wide auxiliary seats . . . wide enough for three extra persons . . . fold neatly away when not in use.

Based on nearly 50 years of rugged day-in, day-out fleet operations, the Checker A-12E sedan means outstanding dependability and economy for all your demanding automotive needs. The perfect vehicle for personnel and executive transportation, taxis, for use in "for-hire" businesses, as railroad fleet cars for work crews, inter-city transportation and other uses where comfort, safety and convenience are vital.

Checker diesel automobiles with the "D" series diesel option are factory-equipped with power steering, dual range automatic transmission, dual brake system, padded instrument panel and a wide range of safety, comfort and convenience features.

# PERKINS.

**World leader in diesel engineering.**

## PERKINS DESIGN FEATURES

**CYLINDER BLOCK:** High strength cast iron alloy with heavy duty ribbing. Cylinder block skirt extends below crankshaft center line for additional rigidity.

**CYLINDER LINERS:** Cast iron dry type with press fit. Easily replaceable.

**CYLINDER HEAD:** High strength cast iron alloy. Valves, overhead type.

**COMBUSTION CHAMBER:** Direct injection of fuel into toroidal chamber in the piston crown insures fast starting and maximum fuel economy.

**CRANKSHAFT:** Forged chrome molybdenum steel, case-hardened, statically and dynamically balanced.

**MAIN BEARINGS:** Five bearings, pre-fit replaceable precision type, thin-walled, steel backed, aluminum/tin lined.

**PISTONS AND RINGS:** Silicon aluminum alloy piston for high strength, light weight, high heat conductivity; three compression and two oil control rings.

**CONNECTING RODS:** Molybdenum alloy, with high strength "H" section shank; fitted with "big end" replaceable, thin-walled, prefinished, steel backed, aluminum/tin lined bearings and steel backed lead/bronze bushings on the rod end. Full floating piston pins.

**VALVES:** Intake valves are high silichrome steel. Exhaust valves are stellite-faced for longer life.

**CAMSHAFT:** High strength cast iron, case-hardened and precision ground.

**TIMING DRIVE:** Helical gear type. Drives camshaft and fuel injection pump.

**INTAKE MANIFOLD:** Aluminum alloy casting.

**EXHAUST MANIFOLD:** Heavy duty cast iron.

**FUEL SYSTEM:** Rotary distributor type, fuel injection pump provides precision fuel distribution to each cylinder for smooth performance from idle to full power. Automatic advance and retard mechanism insures fast starting, acceleration and quiet running through entire speed range. Injectors accessible on cylinder head for ease of maintenance.

**LUBRICATING SYSTEM:** Engine lubrication full pressure feed type, rotor pump driven. Control valve in pump body maintains maximum pressure.

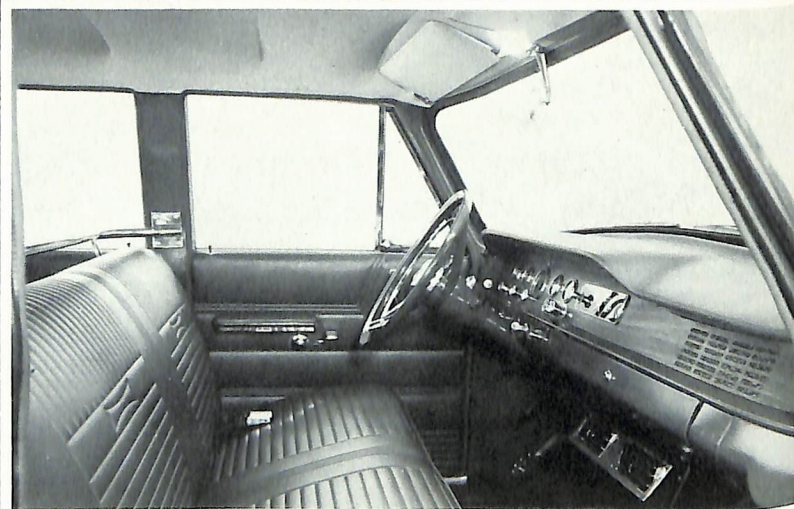
**COOLING SYSTEM:** Thermostatically controlled. Water circulated by engine mounted centrifugal pump.

**ELECTRICAL EQUIPMENT:** 12 volt, generator and starter.

**ACCESSORY POWER TAKEOFF:** Provision is made for a gear driven accessory drive off the timing case.

**STANDARD EQUIPMENT INCLUDES:** Fuel injection equipment—fuel injection pump, fuel injectors, fuel transfer pump, and fuel oil filter; full flow lube oil filter, water pump, belt driven fan, water thermostat, intake and exhaust manifolds, generator, crankshaft pulley, mechanical or hydraulic governor, starting motor and engine lifter brackets.

Designed to SAE standard thread specifications.



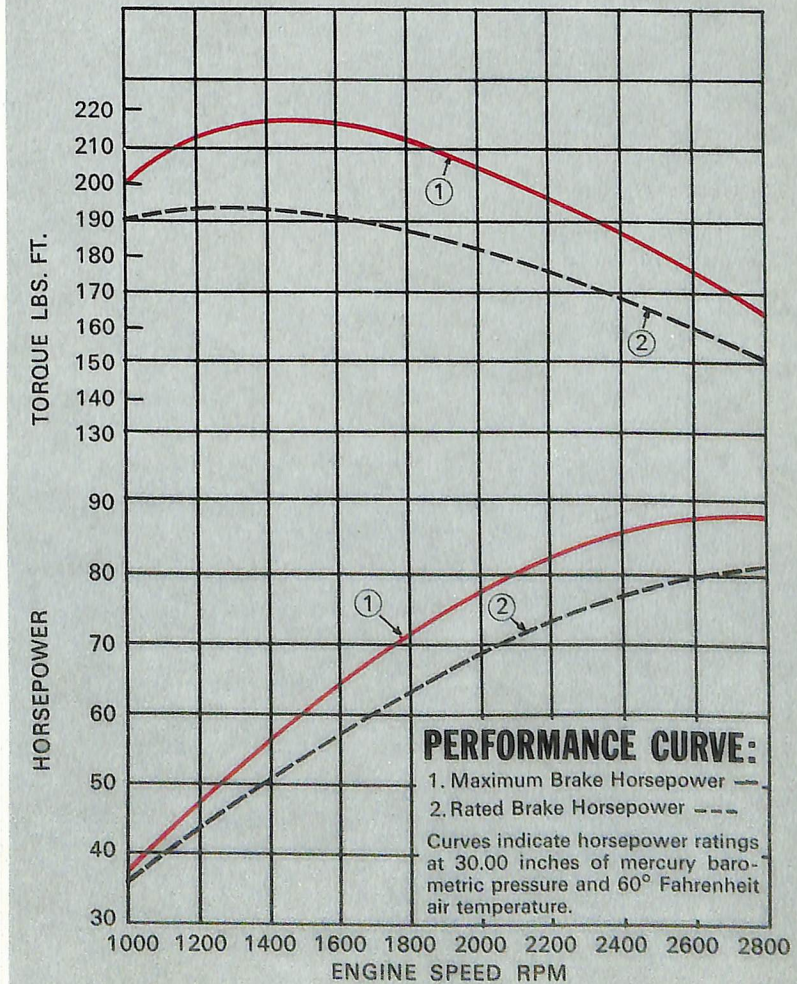
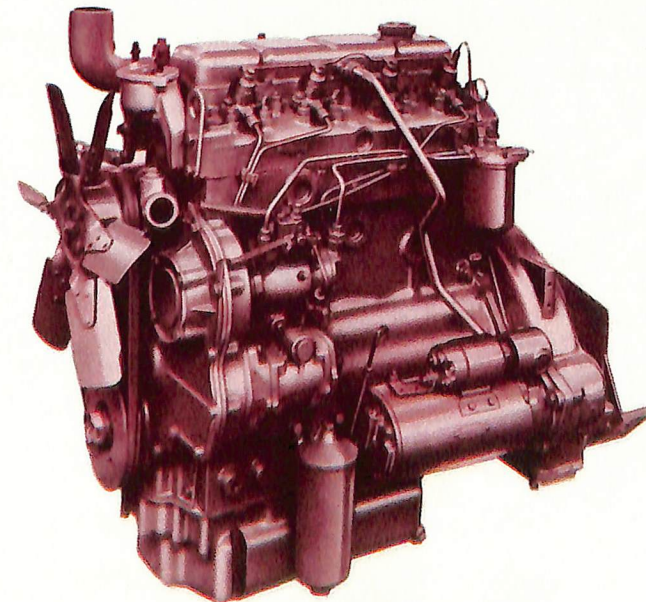
*Three extra passengers sit on big, square, forward-facing auxiliary seats in the Checker A-12E Marathon Deluxe Sedan. Seats fold away when not in use.*

*The interior of the Checker A-12E Marathon Sedan features more headroom, hiproom and legroom. Safety-padded instrument panel offers easy-to-read circular gauges in classic arrangement.*



## MODEL 4-236

Maximum Brake Horsepower . . . . . 88 @ 2800 rpm  
Rated Brake Horsepower . . . . . 80 @ 2800 rpm  
Engine Type . . . . . 4 in-line  
Displacement . . . . . 235.9 cubic inches  
Bore and Stroke . . . . . 3.875 x 5.0 inches  
Operating Cycle . . . . . 4  
Compression Ratio . . . . . 16.0:1  
Firing Order . . . . . 1-3-2-4  
Net Weight, Dry, Without Accessories, Approx. 580 lbs.  
Net Weight, Dry, With Accessories, Approx. . . 700 lbs.



# The CHECKER Family of Fine Cars.

## Checker Marathon 4-door sedan

The Checker Marathon reflects a tradition of passenger comfort and safety that covers nearly 50 years of auto making. At the sprawling, modern Checker factory at Kalamazoo, Michigan, there is a heritage of technical know-how and craftsmanship that is unequalled in the automobile industry. Here, the Checker Marathon and Checker fleet products are practically custom-built. Here is an automobile so unique . . . so different . . . that it has often been compared to expensive custom-built European limousines. Of all cars built in America, only Checker is built to give owners maximum value, and maximum comfort over the longest period of time.

## Checker Marathon 4-door station wagon

The Checker Marathon station wagon is less than 17 feet long, yet it parks like a compact, maneuvers through congested traffic like a cab and has the comfort and convenience of a big sedan. The Marathon station wagon personifies everything Checkers are known for—long life; tough, rugged, super-strong construction; proven economy. Its huge 93 cu. ft. cargo area can be loaded quickly—there are no protruding wheels to get in the way. The Checker station wagon is engineered and built for the tough jobs you expect from a station wagon, yet comfort is not sacrificed.

## Checker Marathon Limousine

The Checker A-12E Limousine, engineered and built for world markets, is the perfect VIP car for municipal and local government officials, livery, corporation, resorts and hotels, funeral directors—whenever and wherever superbly comfortable transportation without ostentation is required. No other car can match the tremendous interiors of the Checker A-12E.

Big, square, forward-facing auxiliary seats mean more adults can relax in limousine comfort. Its regal 129" wheelbase—without useless protrusion in front and rear—means easiest handling with maximum performance.

## Checker Aerobus Limousine, available with gasoline powered V-8 engine.

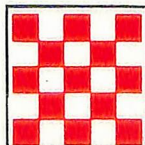
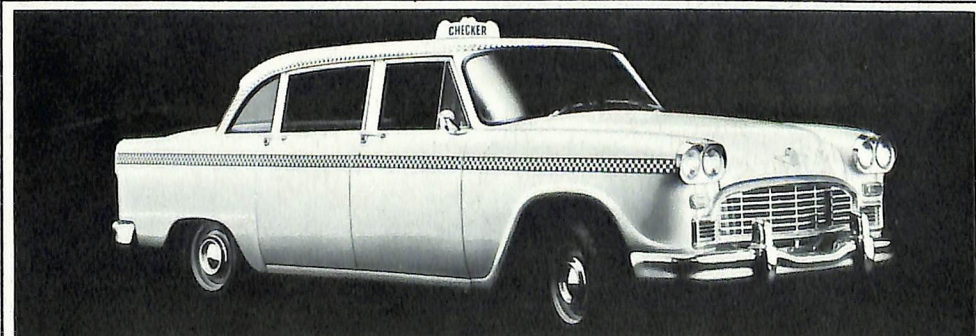
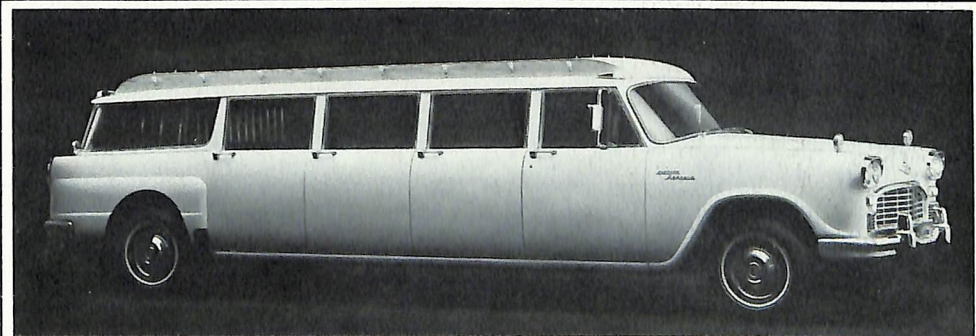
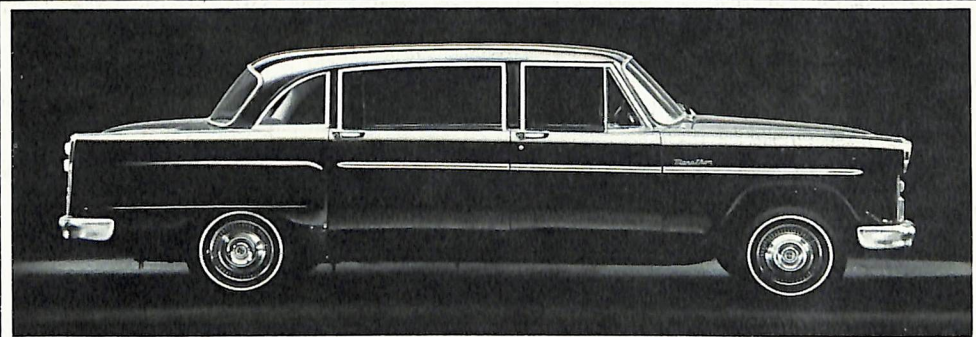
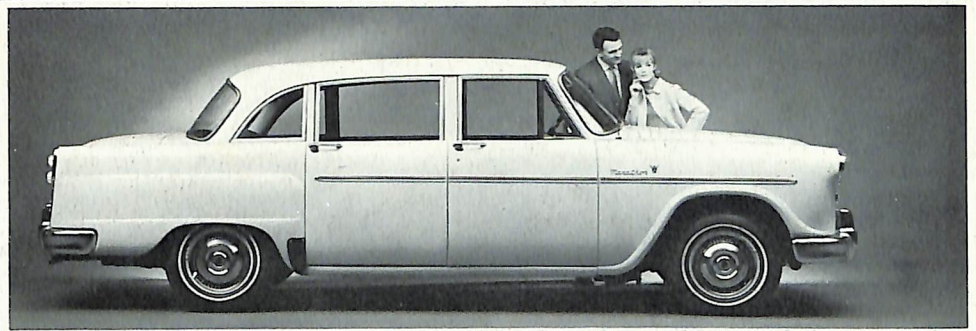
Built from the ground up, as an economical, superbly comfortable and roomy "station wagon limousine," the Checker Aerobus offers all the safety, long life and economy features of the world-famous taxicab, including flat rear floors, higher door openings, ageless design. The Aerobus is available in 6- and 8-door models, with new 200 h.p. 350 cu. in. V-8 gasoline engine, power steering and power brakes included as standard equipment.

12 passenger: 189 in. wheelbase, 270" over-all. 9 passenger: 154 in. wheelbase, 235" over-all.

## The World-Famous Checker Taxicab

Only taxicab "built for the purpose." Easy to maneuver through city traffic; a pleasure to drive on the open highway. Proven in billions of miles of the roughest, toughest, most demanding fleet service, the Checker Taxicab has a world-wide reputation for economy and durability. Now, with the added economy of the Checker-Perkins Diesel Engines, even greater savings and long life can be expected.

Specifications subject to change without notice



**Inquiries**  
should be directed to:  
Checker-Diesel Sales Manager  
Checker Motors Corporation  
Kalamazoo, Michigan 49007