

THE DEWITT MOTOR CO.,
465 N. MAIN STREET
AKRON 10, OHIO

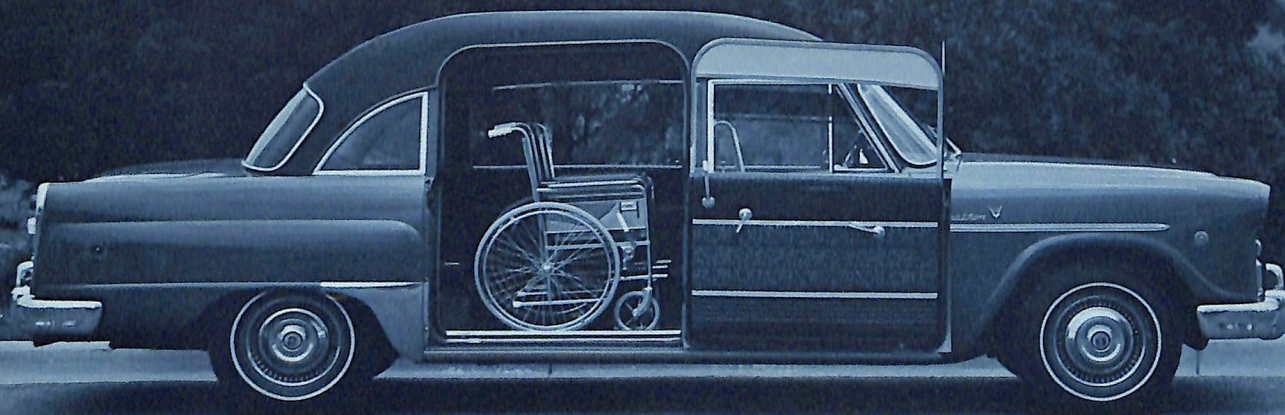
MEDICAR... CHECKER'S AMBULANCE LIMOUSINE

Checker Motors Corporation, builder of the world-famous Checker fleet car, the Marathon family passenger and business car and the fleet-proven Aerobus limousine, presents an important addition to its family of purpose-built fine cars, the Medicar.

Medicar, the world's first totally safe, totally comfortable, totally sensible car, engineered and built specifically to transport the handicapped and non-ambulatory persons.

Medicar...a dignified Ambulance-Limousine and Wheelchair Car...nothing like it available ...until now!

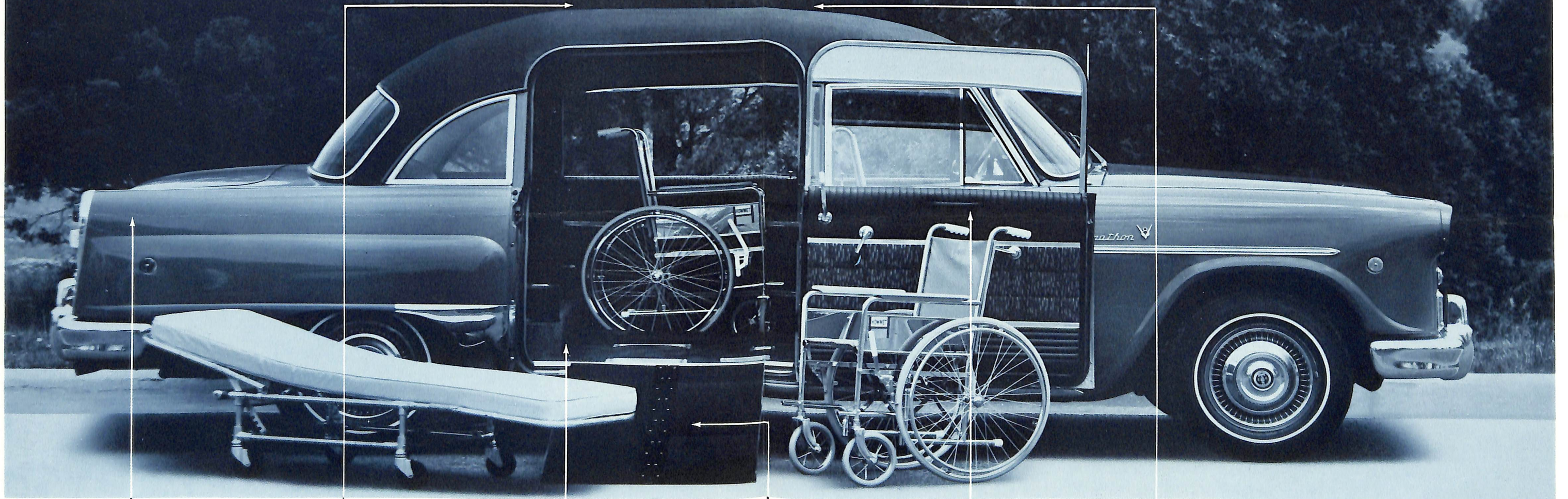
Medicar



Medicar...
for the handicapped.

Medicar is a special-purpose car, carefully engineered and built by Checker Motors Corporation. Not a full-size ambulance—not a converted truck, van or oversize station wagon, but a luxurious Checker limousine sedan. Built on a 129" wheelbase, the Medicar was designed to provide maximum comfort, safety and protection for up to three in-transit, non-ambulatory persons. Ideal for schools, hospitals and institutions, Medicar transports passengers unobtrusively and with quiet dignity. Standard equipment includes all most-wanted Checker economy features.

Only the Medicar
is designed for maximum comfort,
convenience and safety for
transporting handicapped persons.



1 Plenty of trunk room.

2 Roof is inches higher than ordinary sedans, accommodates seated wheelchair patients . . . in full-size wheelchairs . . . in comfort.

3 Checker exclusive flat rear floor means greater comfort.

4 The ramp for the wheelchair and stretcher stores in trunk when not in use.

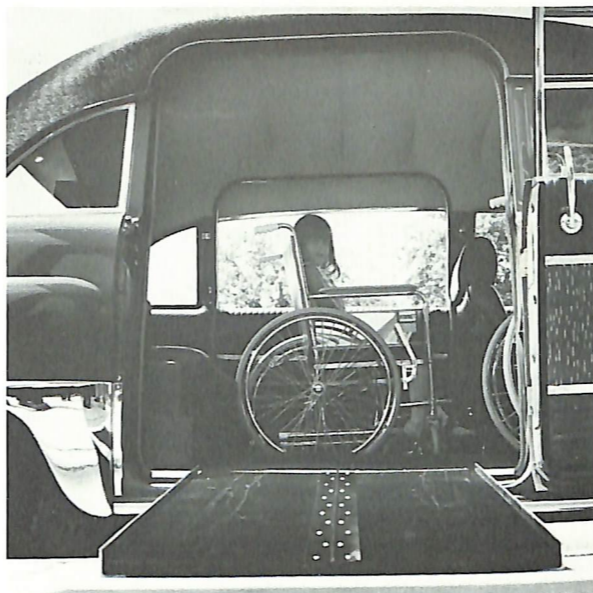
5 Rear door opens 180° wide—for easy loading and unloading.

6 For extra safety and maximum passenger security, the Medicar features an internal structure of reinforced steel—side to side, front to back—around the roof of the car.

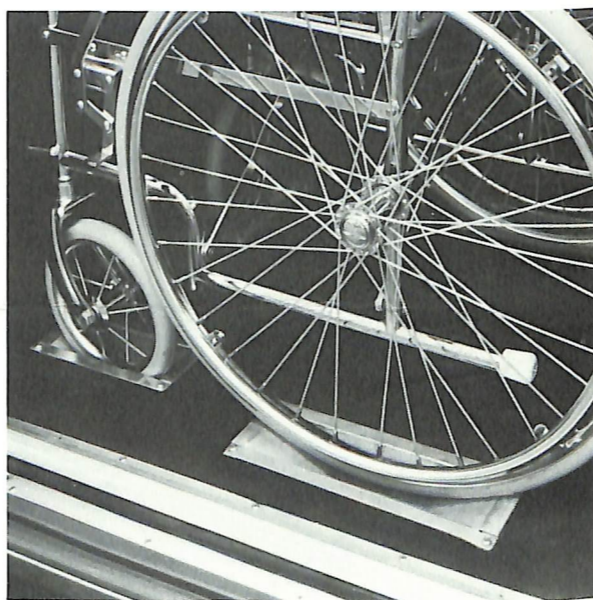
7 Interior converts to: (1) 8-passenger family sedan; (2) a single wheelchair and a stretcher; or (3) up to three wheelchairs.

Mercedes

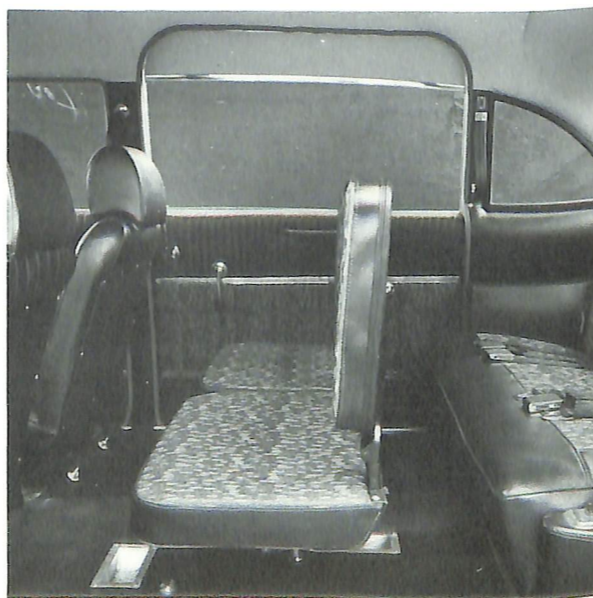
**Wide Rear Door
Opens to 180°**
Higher and wider
rear doors assure
unobstructed entry
and exit.



**Wheelchair
Locks into Place**
Chairs lock securely
into place. Floor
locks prevent chair
movement while car
is in motion.



**Converts to 6-8
Passenger Limousine
in Minutes**
Converts to wheel-
chair and stretcher
use in minutes. Con-
verts to limousine
with use of square,
forward-facing seats.
Seats and rear cush-
ion are stored in
trunk when not in
use.



Ramp Aids Entry, Exit
Ramp allows chair
or stretcher to be
pushed or pulled eas-
ily in or out of car.
Accommodates bat-
tery-operated wheel-
chairs, too. Ramp
stores in trunk when
not in use.



Extra Headroom
Plenty of extra head-
room for wheelchair-
seated patients.



Driver Comfort
Bucket-type seat is
standard for driver.
Each passenger is vis-
ible. Photo shows in-
terior with stretcher
in position.

Medicar

Priced below ambulances, Medicar offers proven serviceability and roominess—outstanding utility and quality.

COSTS LESS!

Medicar costs considerably less than single-purpose ambulances, without restricting its use to just stretcher carrying. More versatility, comfort and safety for your money.

SAFETY!

For nearly 50 years, Checkers have been earning an enviable reputation for safety . . . security. Features such as the super-strong, super-safe, double channel X-brace frame, the exclusive steel structure around roof, and heavy-duty parts contribute to Checker's amazing record of stability, strength and safety.

COMFORT!

Handicapped persons need extra comfort—and Medicar has it! Passengers sit in their own wheelchairs. No transferring from chair to car; no lifting, straining or extra handling required. Flat rear floors mean easy movement and positioning of chairs.

CONVENIENCE!

Ideal for schools for the handicapped; for hospitals, institutions, welfare organizations, retirement and nursing homes; police, fire and civil defense corps. Ideal as family or business limousine.

DEPENDABLE!

Built by the makers of world-famous, totally dependable Checkers! Handicapped, non-ambulatory patients need dependable transportation . . . Checker delivers!

BUILT TO LAST!

Checker family cars are engineered and manufactured in Kalamazoo, Michigan, to exacting quality specifications, reflecting Checker's 50-year tradition of craftsmanship.

standard equipment

155 h.p. 250 C.I.D. OHV 6 Cyl. engine
 exhaust emission control system
 dual-range automatic transmission
 five 8.25 x 15 four ply
 8-ply rated tires
 15" wheels
 2-speed electric windshield wipers
 and washers
 impact absorbing steering column
 anti-theft steering column and ignition
 directional signals with
 lane change feature
 emergency warning switch
 back-up lights
 2 sets of shoulder harnesses
 one set of lap belts front
 three sets of lap belts rear
 two padded sun visors
 heater and defroster system
 outside rearview mirror
 breakaway safety-type inside
 rearview mirror
 head restraints
 cigar lighter
 non-skid floor mats
 undercoating
 dual master cylinder
 brake system



Medicar standard equipment

129" wheelbase, includes all Marathon
 standard equipment plus raised roof
 with vinyl top
 1 bucket seat
 180° rear door hinges (L&R)
 80 amp battery
 chair wheel wells
 parking brake light

Medicar options

Loading Ramp
 Removable Right Hand Bucket Seat
 Removable Export Auxiliary Seat

Checker options

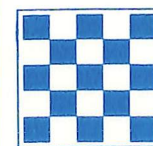
Air Conditioning
 Alternator
 Axle—Powr-Lok
 Brakes
 Power Disc Brakes, Front
 Bumper Guards
 Electric Clock
 Engine
 V-8, 250 h.p., 350 c.i.d.
 Tinted Glass
 Heater
 Auxiliary Underseat
 Defogger, Rear Window
 Mirrors, inside; day-night
 Heavy-Duty Radiator
 Radios
 AM Pushbutton
 AM-FM Pushbutton
 Speaker, Rear Seat
 Spotlight
 Power Steering
 Suspension
 Heavy-Duty Shock Absorbers
 Extra Heavy-Duty Springs
 Deluxe Wheel Covers
 Power Windows
 Tires
 Optional—Whitewall, 4-ply,
 8-ply rated.



Medicar measurements

(in inches)

Door opening width and height	
high	48 1/4
wide	39
Ground to door sill height (ramp height unloaded)	13
Floor to ceiling height at front wheelchair position	52
Floor to ceiling height at rear wheelchair position	54
Maximum head room of standard wheelchair to headliner:	
front wheelchair	36
rear wheelchair	37
Length from rear seat cushion to the instrument panel	69
Length from rear seat cushion to front seat back when bucket seat is in front position	34
when in rearmost position	31
Over-all length of car	
(with bumper guards)	212
(without bumper guards)	209
Over-all height	69 3/4
Over-all width	76
Wheelbase	129



Checker Medicar
 The Ambulance-Limousine-
 Wheelchair Car . . .
 nothing like it available until now!

Checker Motors Corporation
 Kalamazoo, Michigan 49007
 Printed in U.S.A.
 Specifications subject to change.
 © 1969 CMC