

1975 FORD Torino



Gran Torino...

value leader of the mid-size market

Gran Torino Brougham...

distinctive luxury for the discriminating buyer

Gran Torino Sport...

bred to be exciting, spirited and beautiful

Gran Torino . . . value leader of the mid-size market.
Gran Torino Brougham . . . distinctive luxury for the
discriminating buyer. Gran Torino Sport . . . bred to
be exciting, spirited and beautiful.
1975 Torino . . . continues a tradition of offering the

mid-size car buyer a wide choice of models, solid
value, high luxury, and sporty styling. The 1975 Torino
has been refined to include a higher level of standard
equipment and continues to offer a wide range of
optional equipment.

TORINO...THE MID-SIZE CAR FOR TODAY'S NEW-CAR BUYER

FORD TORINO FOR 1975



Gran Torino... SOLID VALUE WITH A HIGH LEVEL OF STANDARD EQUIPMENT

Across-the-board Standard Features

351 CID 2V V-8 ENGINE

Previously optional, now standard, the husky 351 2V V-8 engine is famous for its smooth, powerful response and long-life durability.

SELECTSHIFT AUTOMATIC TRANSMISSION

The popular 3-speed SelectShift automatic transmission is now standard and features a second gear that may be selected manually for better traction on ice or snow.

POWER FRONT DISC BRAKES

Stopping a Torino is sure and positive with the standard power front disc brakes.

POWER STEERING

Torino's standard power steering makes handling nice and easy... and parking a snap!

STEEL-BELTED RADIAL

PLY TIRES

Standard steel-belted radial ply tires (HR78 x 14) offer long tread

life and less rolling resistance which can improve gas mileage.

SOLID-STATE IGNITION

Solid-state ignition is now standard on every Torino and its reliable, practically maintenance-free electronic components replace the former distributor points, cam and condenser.

Gran Torino Brougham... luxury was never this beautiful

The handsome Brougham interior is highlighted by:



- split bench seat convenience with dual fold-down center armrests
- luxurious and easy-to-clean Westminster cloth seat trim or super-soft all-vinyl trim
- attractive woodtone applique on the instrument panel
- self-regulating electric clock
- deluxe 2-spoke steering wheel

Luxury Brougham exterior features include:

- full-vinyl roof
- distinctive opera window (2-door models only)
- "Brougham" stand-up hood ornament
- deluxe wheel covers
- wide vinyl insert bodyside molding that's color-keyed to the vinyl roof and helps to protect against dings and dents

Gran Torino Sport... the Torino with "spirit"

In a league of its own, the Gran Torino Sport has distinctive exterior and interior features. Exterior-wise, the Gran Torino Sport can be identified by its "sport grille ornament," "Turbine" wheel covers, dual fender peak paint stripes, and dual outside color-keyed left- and right-hand remote-control mirrors.



Inside, the sporty mood prevails because the Gran Torino Sport driver is greeted by a full array of instrumentation to tell him how all major systems are functioning. Included is a tachometer, trip odometer, gauges for oil pressure, ampere, temperature and fuel, and an electric self-regulating clock. Other sporty amenities include super-soft easy-to-clean vinyl door and seat trim, a deluxe 2-spoke steering wheel, plush cut-pile carpeting and body-hugging comfortable bucket seats or Flight Bench seating at no extra cost.

MAJOR 1975 TORINO SPECIFICATIONS

MODEL LINE-UP

Low Series—Torino

- 2-Dr. Hardtop
- 4-Dr. Pillared Hardtop

Middle Series—Gran Torino

- 2-Dr. Hardtop
- 4-Dr. Pillared Hardtop

Luxury Series—Gran Torino Brougham

- 2-Dr. Hardtop
- 4-Dr. Pillared Hardtop

Sport Series—Gran Torino Sport

- 2-Dr. Hardtop

Wagon Series

- Torino
- Gran Torino
- Gran Torino Squire

10 models in 1975 to satisfy every mid-size buyer's needs!

TORINO POWER TEAM LINE-UP

(351 CID 2V V-8 engine and automatic transmission are standard.)

ENGINE	TRANSMISSION	AXLE RATIO		
		Std.	Opt.	Traction-Lok
351 CID 2V V-8	automatic	3.00	3.25	3.00 3.25
400 CID 2V V-8	automatic	3.00	3.25	3.00 3.25
460 CID 4V V-8	automatic	2.75 (a)	3.00	2.75 (a) 3.00

(a) 3.00 standard in California.

Note: Torino Fuel Tank Capacities are: Torino 26.5 gal.
Wagons 21.2 gal.

1975 TORINO STANDARD TIRE AVAILABILITY

MODEL AND ENGINE APPLICATION	351 CID 2V 8-CYLINDER	400 CID 2V 8-CYLINDER	460 CID 4V 8-CYLINDER
TORINO (All models)	HR78 x 14 BSW	HR78 x 14 BSW	HR78 x 14 BSW
GRAN TORINO (All models)	HR78 x 14 BSW	HR78 x 14 BSW	HR78 x 14 BSW
GRAN TORINO BROUGHAM (All models) ..	HR78 x 14 WSW	HR78 x 14 WSW	HR78 x 14 WSW
GRAN TORINO SQUIRE	HR78 x 14 WSW	HR78 x 14 WSW	HR78 x 14 WSW
GRAN TORINO SPORT	HR78 x 14 WSW	HR78 x 14 WSW	HR78 x 14 WSW

HR — Steel-belted radial ply tires.

OPTIONAL TIRE AVAILABILITY

STANDARD TIRE	OPTIONAL TIRE						
	H78 x 14 BSW	H78 x 14 WSW	HR78 x 14 WSW	JR78 x 14 BSW	JR78 x 14 WSW	HR78 x 14 BSW 6-ply rated (b)	HR78 x 14 WSW 6-ply rated (b)
HR78 x 14 BSW ...	X	X	X	X (a)	X (a)	X	X
HR78 x 14 WSW ...		X			X (a)		X

(a) Except Wagons.

(b) 6-ply rated HR78 x 14 available only on station wagons; all other tires 4-ply rated.

NOTE: See General Product Features for additional tire information.

1975 TORINO TRADEMARKS...

□ ECONOMY...

□ PRACTICALITY...

□ DURABILITY...

TORINO ECONOMY...Standard Features

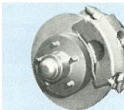
- steel-belted radial ply tires have a long tread life, offer less rolling resistance and can increase gasoline mileage
- solid-state ignition system eliminates distributor points and condenser . . . parts that previously had to be serviced or replaced
- self-adjusting brakes eliminate the need for periodic brake adjustments and thereby saves the owner added service expense
- long recommended service maintenance intervals provide for owner convenience . . . and driving economy



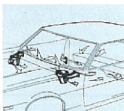
Steel-Belted Radial Ply Tires

TORINO PRACTICALITY...Standard Features

- roomy big-car six-passenger seating, especially good for car pools
- 3-speed automatic transmission provides convenience and smooth acceleration
- power steering offers more positive handling control and parking convenience
- fade-resistant power front disc/rear drum brakes help provide smooth, straight-line stops with minimum pedal effort
- 26.5-gallon gas tank capacity (21.2 on wagons) for long non-stop travel between fill-ups
- 16.5-cubic-foot luggage compartment for family-size travel convenience
- DirectAir ventilation provides a continuous circulation of fresh air
- steering column lock helps protect against theft and vandalism
- reversible keys
- inside hood release adds owner security and helps protect against engine-compartment tampering
- concealed 2-speed electric windshield wipers with wiper-mounted washer jets for an even distribution of the cleaning solution
- lockable glove box
- inside day/night mirror, for added driver convenience and comfort
- 16 exterior colors to satisfy practically every prospect's taste



Self-Adjusting Front Disc/Rear Drum Brakes



DirectAir Ventilation



16.5-Cubic-Foot Luggage Compartment

TORINO DURABILITY...Standard

- solid body/frame construction with rubber insulators to help isolate passengers from noise, vibration and harshness
- rust protection on all underbody parts to help resist corrosion
- extensive use of sealers, insulation and soundproofing materials to reduce road and engine noise
- aluminized muffler for long life
- impact-resistant, high-strength, heat-tempered glass (on sides and backlite)
- strong two-sheet "sandwich," heat-laminated windshield



Aluminized Muffler

MORE TORINO QUALITY FEATURES

Electrostatic paint process works on electrical principles that cause the paint to be attracted to the surface and achieve a thorough "wraparound" effect. The result is a paint finish that is deep, rich, and long-lasting.

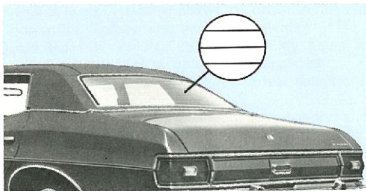
Selected front coil springs and calibrated shock absorbers mean that Torino's front springs are "computer-selected" to match the weight requirements of every car with the shock

absorbers calibrated to provide optimum dampening.

Four-link Stabi rear suspension improves stability of the car by helping to resist lateral or side-to-side sway—and permits the coil springs to provide a maximum cushioning effect.

Quality workmanship in every Torino shows up in the careful fit of body panels, doors, interior trim, the vinyl roof and the snug fit of carpeting.

TORINO OPTIONS TO MAKE THE "GOING" EVEN BETTER!



The practical electric rear window defroster option quickly melts ice and removes mist.

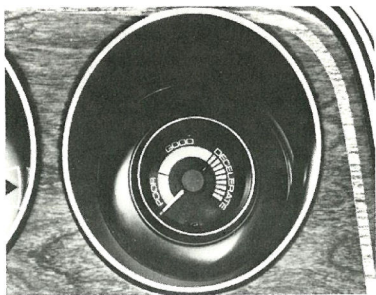


The Tilt Steering Wheel option allows the driver to select the most comfortable of five steering wheel angles. For easy entry and exit, the steering wheel can be placed in the maximum "up" position.



Here's a fine convenience option, especially for long-mileage drivers. The Finger-tip Speed Control lets the driver choose and hold a safe cruising speed. It disengages at the touch of the brake pedal or by pressing the "off" rocker switch located on the left-hand spoke of the steering wheel.

This new option gives the passenger added convenience by providing one light on each side of the visor vanity mirror.



The Fuel Sentry Vacuum Gauge option will help the concerned driver modify his driving habits and improve gasoline economy. The idea is to keep the needle in the green area of the gauge (good, excellent economy) and out of the red area (poor economy) by driving with a "light foot." This option is not available on the Gran Torino Sport.

POWER ASSISTS

Power door locks, electrical—includes power tailgate lock on wagons.

Power seat, 6-way driver only—available only with Gran Torino Brougham, and the Gran Torino Squire with the Squire Brougham Option.

Power seat, 6-way full width—not available on Gran Torino Brougham models.

Power side windows—includes front windows only on 2-door models.

Power tailgate window—standard on Gran Torino Squire model. Available only on station wagon models.

OTHER POPULAR TORINO OPTIONS

The Convenience Group Includes:

- left- and right-hand remote-controlled mirrors. The right-hand mirror is controlled from the instrument panel
- right-hand visor vanity mirror
- interval windshield wipers
- spare tire extractor (station wagons only)

The Light Group includes these convenience and safety features:

- ashtray light
- dual beam map light
- glove compartment light
- luggage compartment light
- cargo light (station wagons)
- under instrument panel courtesy light
- engine compartment light

- rear door courtesy light switch
- headlights-on warning buzzer
- headlight switch illumination
- parking brake warning light

SelectAire or Automatic Temperature Control Air Conditioner

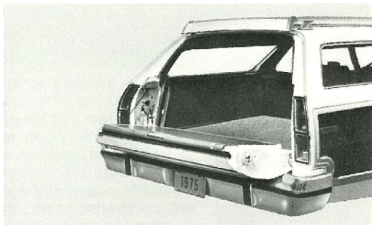
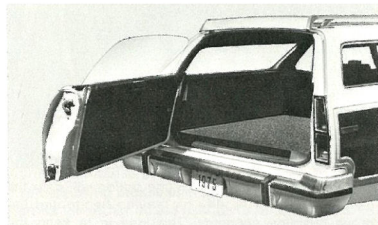
Both air conditioner options provide comfortable temperature and humidity control. The Tinted Glass option is recommended with either air conditioner system to help reduce sun glare and heat build-up.

AM/FM Stereo Radio

The optional AM/FM stereo radio features 10 station pre-set tuning, four-speaker sound distribution (two door-mounted and two rear shelf-mounted) . . . and a pleasurable world of listening entertainment.

FORD TORINO WAGONS OFFER

- PRACTICALITY...
- ROOMINESS...
- VALUE...



Torino Wagons offer:

- wide 48.2 inches of loadspace between wheel-housings
- fold-down second seat for a long load floor length of 87.5 inches with the tailgate up . . . 109.2 inches with the tailgate down
- 84.9 cubic foot cargo volume with a carpeted load floor
- lockable storage compartment under the load floor adds 8.1 cubic feet of storage space



3-Way Magic Doorgate

The ultimate in station wagon practicality and convenience, Torino's popular 3-Way Magic Doorgate opens like a door with the window up or down . . . or opens like a tailgate for extra long loads.



All the Torino Wagons have as standard equipment:

- 351 CID 2V V-8 engine which combines good performance with operating economy
- SelectShift Automatic Transmission that offers driving convenience
- Power Steering which provides good handling response and ease of parking
- Power front disc brakes which provide smooth, straight-line stops with minimum pedal effort
- Steel-belted radial ply tires for long tread life
- Solid-state ignition system to help reduce scheduled maintenance costs

POPULAR 1975 TORINO WAGON OPTIONS

- Power tailgate window allows the driver to raise or lower the window from the driver's seat
- Electric rear window defroster quickly helps to clear the rear window of ice, snow and mist
- Fingertip Speed Control lets the driver select and hold a safe cruising speed
- Tilt Steering Wheel for maximum drive comfort and convenience
- Heavy-duty suspension to help handle heavy loads
- Trailer Towing Packages (Class II or III) to handle trailer towing requirements
- Traction-Lok Differential to help transverse snow, mud and sandy roads
- Air Conditioning
- Tinted glass to help reduce sun-glare and heat build-up
- 400 CID 2V V-8 engine for added performance
- HR78 x 14 WSW tires (standard on Gran Torino Squire)
- Power Door Locks (Includes power tailgate lock)



The Luxurious Squire Brougham Option

- split bench seat convenience with dual fold-down center armrests
- super-soft comfortable and easy-to-clean vinyl seat and door trim
- plush 22-oz. cut-pile carpeting in the passenger compartment
- cut-pile carpet on the load floor
- electric clock
- deluxe wheel covers
- stand-up "Brougham" hood ornament

Spare Tire Extractor

This option makes it extra easy to remove the spare tire from its stowage compartment—standard with the Convenience Group.



Deluxe Luggage Rack

This convenience option features wide, strong steel side rails with a rear crossbar that is fully adjustable for partial or full loads. A built-in air deflector is included which directs an air stream over the rear window to help prevent the accumulation of dirt deposits.



Rear-Facing Third Seat

Here's how to provide additional passenger room in the Gran Torino or Gran Torino Squire Wagons. The Rear-Facing Third Seat option offers the convenience of added seating space when raised or, when closed, the panel may be locked to provide lockable luggage space.

1975 TORINO BODY DIMENSIONS

(All dimensions in inches unless otherwise specified.) TORINO MODEL	4-Door Pillared Hardtops			2-Door Hardtops			
	Torino	Gran Torino	Gran Torino Brougham	Torino	Gran Torino	Gran Torino Brougham	Gran Torino Sport
GENERAL							
Wheelbase	118	118	118	114	114	114	114
Tread—Front	63.4	63.4	63.4	63.4	63.4	63.4	63.4
—Rear	63.5	63.5	63.5	63.5	63.5	63.5	63.5
Height—Overall	53.2	53.2	53.2	52.5	52.5	52.5	52.5
Length—Overall	217.6	217.6	217.6	213.6	213.6	213.6	213.6
Width—Overall	79.3	79.3	79.3	79.3	79.3	79.3	79.3
FRONT SEAT ROOM							
Headroom (effective)	38.3	37.8	37.8	37.6	37.3	37.2	37.2
Maximum legroom to accelerator	42.5	41.9	41.9	42.5	42.1	41.9	41.9
Hip Room	59.4	59.4	59.4	59.4	59.4	59.4	56.7
Shoulder Room	58.6	58.6	58.6	58.6	58.6	58.6	58.6
REAR SEAT							
Headroom (effective)	36.9	36.9	36.9	36.2	36.3	36.2	36.1
Minimum effective legroom	37.8	37.5	37.5	33.2	33.0	33.0	33.0
Hip Room	59.4	59.4	59.4	58.0	58.0	58.0	58.0
Shoulder Room	58.5	58.5	58.5	56.9	56.9	56.9	56.9
LUGGAGE COMPARTMENT							
Usable luggage capacity (cu. ft.)	16.5	16.5	16.5	16.5	16.5	16.5	16.5

STATION WAGONS	Torino	Gran Torino	Gran Torino Squire
GENERAL			
Wheelbase	118	118	118
Tread—Front	63.4	63.4	63.4
—Rear	63.2	63.2	63.2
Height—Overall	54.8	54.8	54.8
Length—Overall	222.6	222.6	222.6
Width—Overall	79.0	79.0	79.0
FRONT SEAT ROOM			
Headroom (effective)	38.4	38.1	38.0
Max. legroom to accelerator	42.5	42.1	41.9
Hip Room	59.4	59.4	59.4
Shoulder Room	58.6	58.6	58.6
WAGON 2ND SEAT			
Headroom (effective)	38.4	38.4	38.3
Legroom (effective)	37.3	37.1	37.0
Hip Room	59.3	59.3	59.3
Shoulder Room	58.4	58.4	58.4
3RD SEAT ROOM			
Headroom (effective)	37.3	37.3	37.3
Legroom (effective)	31.1	31.1	31.1
Hip Room	38.0	38.0	38.0
Shoulder Room	48.4	48.4	48.4
CARGO COMPARTMENT			
Cargo Volume (cu. ft.)	84.9*	84.9*	84.9*
Maximum floor length (open tailgate)	109.5	109.5	109.5
Load Floor Length (closed tailgate)	87.5	87.5	87.5
Maximum rear opening width	51.0	51.0	51.0
Rear opening height	28.8	28.8	28.8
Minimum floor width (between wheelhousings)	48.2	48.2	48.2

*Additional 8.1 cubic feet for underfloor storage.

NOTE: In order to achieve the emissions standards established for 1975 model vehicles, catalytic converters will be installed on all 1975 Torinos with all engines.

FORD Torino

for 1975



At the time of release, specifications and prices contained herein are believed to be correct. Ford Division reserves the right to discontinue models at any time or change specifications, designs or prices without incurring obligation.