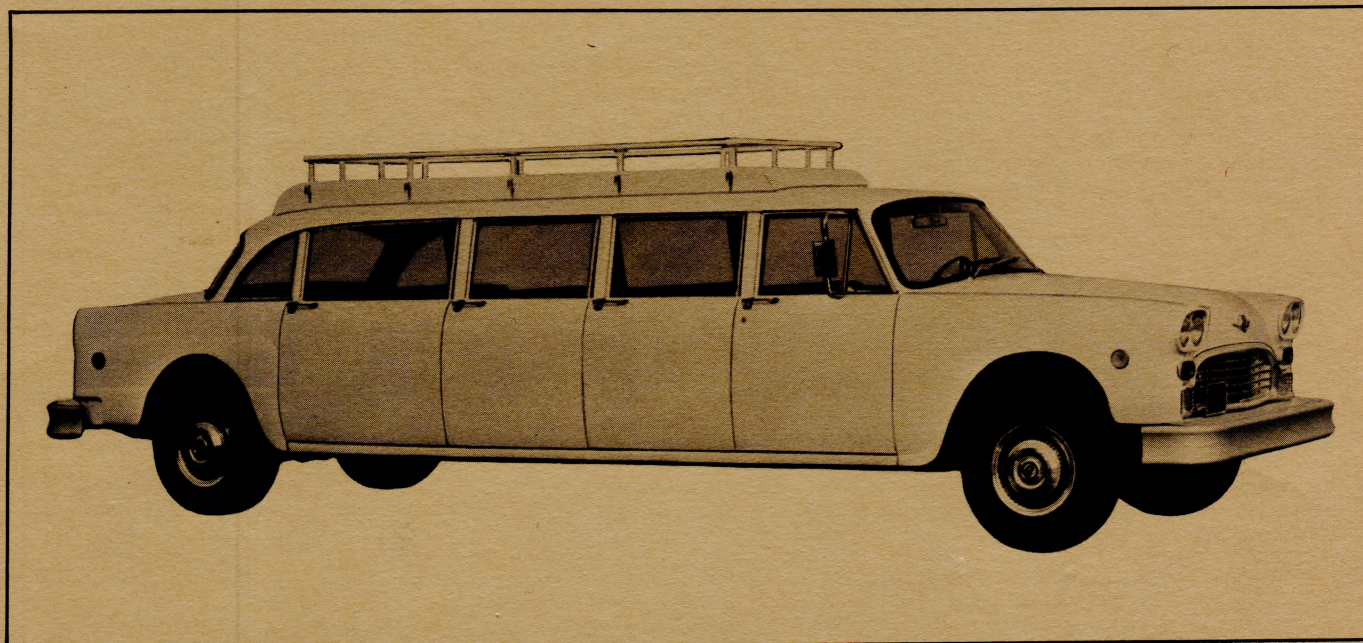


1976
New! Functional! Economical!
The 15-passenger limousine from Checker.

Aerobus 15

It's today's answer to moving up to 15 people in comfort with economy and convenience.



Designed for people who have to move people, with bag and baggage, the Checker Aerobus 15 limousine was designed, engineered and built from the ground up, for the purpose. Aerobus 15 is a tough, rugged, fleet-proven descendant of other world-famous Checker Aerobuses that continue to pile up thousands of extra miles for owners and operators the world over.

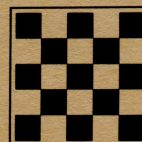
With Aerobus 15 you treat passengers like they're your best customers; your best friends! No passenger is ever more than one seat away from a door. And what doors! Checker Aerobus 15 has eight, full-size, taxicab-styled doors with the higher openings that allow passengers to get in

and out with ease and dignity. The first twelve passengers sit in deep-seated comfort in full-size "bench-style" seats; three additional passengers can sit in two fold-down, forward-facing auxiliary-type seats. These are the same size seats that have been an outstanding and exclusive feature on the Checker A12-E luxurious limousines.

Yes, the Aerobus 15 is long—283 inches long, but it's tough, rugged and solid from bumper to bumper, from roof to road. The exclusive Checker taxicab chassis combines with a unique frame, built with extra cross members for extra strength. And, because of Checker's fleet-proven construction, the

Aerobus drives like a car with passenger-car steering, maneuverability and response.

All in all, Aerobus 15 represents a sound, economy- and safety-oriented vehicle with virtually all the comfort and convenience of a private limousine.



**Checker Motors
Sales Corporation**

2016 N. Pitcher Street
Kalamazoo, Michigan 49007
(616) 343-6121

Checker Aerobus 15

CONVENIENCE

Only Checker Aerobus has passenger-car comfort with van capacity! Only Checker Aerobus permits up to 15 passengers to ride in comfort.

Who can use the Aerobus 15?

Airlines:

Crew movement between planes; from airport to downtown.

School/College Athletic Departments:

Transporting teams; wrestling, debating, basketball—with all their equipment to competitive events.

Resorts/Hotels:

Passenger pickup and drop-off in style and comfort. (Plenty of room for advertising display space on optional roof top carrier and sides.)

Business:

Pickup and delivery of workers between plants; VIP use. Saves fuel! Saves parking lot space! Improves employee attendance and morale!

Rent-a-Car:

Pickup and drop-off of passengers between terminal and car lot.

Hospitals/Nursing Homes:

Moving ambulatory patients who require extra care as well as the handicapped.

Others who have used Aerobus successfully include: school bus companies, church groups, rental and leasing firms, transportation companies, retail stores with multiple branches, and condominiums.

SPECIFICATIONS

(Subject to change without notice.)

A12-8E Basic Specifications

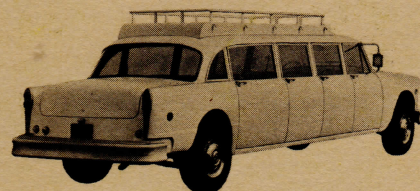
8-door, 15 passenger
Wheelbase—198"
Overall Length—282.75"
Overall Width—76"
Overall Height—64.25" (with Top Carrier 74.25")
Curb Weight—5,565 lbs.
350 cu. in. 4BBL V-8 Engine
Regular Fuel (average octane: 87)
Wheels—16.5"
Tires—9:50 x 16.5—6-ply Rated
Axle Ratio—3.73:1

Optional Equipment

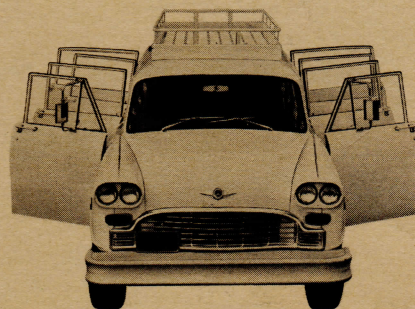
2-Tone Paint/Air Conditioning/Roof Luggage Carrier/Music Radio/Roof Clearance and Identification Lamps/Class A Turn Signal Lamps/Rear Window Defogger/Chrome Fender Shields/Side Mouldings/Coolant Recovery Kit/Transmission Oil Cooler

Standard Equipment

- Dual Range Automatic Transmission
- Power Front Disc Brakes
- Power Steering with Recirculating Ball Steering Gear
- 80-Amp. Battery
- Heater and Defroster
- 2 Floor-Mounted Auxiliary Heaters
- Parking Brake Warning Light
- Windshield Washer
- Electric Windshield Wipers (2-speed)
- 2 Deluxe Outside Mirrors
- Undercoating
- Tinted Glass
- All Universal Joints Equipped with Lube Fittings
- Double Channel Double X-Brace Frame with Reinforcing Girders and Beams
- Energy-absorbing Steering Column with Anti-Theft Locking Device
- Side Marker Lights, Front and Rear
- 2½" Wide 9-leaf Rear Springs

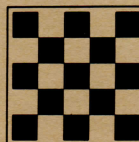


Ride in limousine comfort, without crowding, crawling over other passengers and piling luggage in with people. Every passenger is within one seat of a door. Checker's higher door openings mean people can get in and out without stooping.



When you want to treat your passengers with care; when the people you transport are important to you; when longevity, dependability and economy are vital to your business or passengers, you need Aerobus 15, today's answer to transporting up to 15 passengers in style and comfort.

Checker Motors Corporation reserves the right to change at any time, without prior notice, price, colors, materials, equipment, specifications, and models or to discontinue models without obligation to anyone including previous purchasers of current models. Some equipment and accessories illustrated are not standard equipment and will be furnished at extra cost if available.



**Checker
Motors Sales
Corporation**

2016 N. Pitcher Street
Kalamazoo, Michigan 49007
(616) 343-6121