



# 1985 JETTA



Hosted by  
[A2Resource.com](http://A2Resource.com)

## THE ALL-NEW 1985 JETTA

The 1985 Jetta is the first affordable German road car. It is designed with sophisticated engineering features that translate into outstanding road handling and dazzling performance. It transports both driver and passengers in exceptional comfort and roominess. And it offers a high degree of personal security.

However, the Jetta offers one feature that clearly separates it from the rest of the field: an affordable price.

How can we build a German road car that's actually within your reach?

Remember, the Jetta is also a Volkswagen.



Although the 1985 Jetta is all new, the philosophy upon which it was built goes back to the very first Volkswagen introduced in America: the legendary Beetle. The Beetle astonished the automotive world with its efficiency, reliability and common sense. It taught America that sophisticated engineering and value need not be mutually exclusive. And it showed that a car was meant to last longer than one or two model years.



The legendary  
VW Super Beetle.

### We still travel our own road

Today, we still design these basic virtues into every Volkswagen we build. And we still refuse to follow popular trends.

We demand that the laws of aerodynamics take precedence over current design fads. We believe in an evolution of excellence, the continual process of improvement and

refinement in the pursuit of perfection. We insist on the strictest quality control, with the result that every part of every Volkswagen undergoes several inspections by both man and computer. And, although we employ the latest technology in our manufacturing process, we believe in traditional craftsmanship, in artisans who maintain standards of pride and dedication no machine can ever match.

### A passion for perfection

Our German engineers impart their own unabashed passion for engineering excellence and overall performance into every Volkswagen they design.



They employ advanced technology instead of automotive gimmickry. They provide outstanding efficiency without compromising stunning performance. And they engineer every Volkswagen with such precision that virtually every driving command can be executed swiftly.

As a result, you do not drive a car. You have the unique pleasure of driving a Volkswagen.

## IT'S NOT A CAR. IT'S A VOLKSWAGEN

### The Volkswagen 2-year Unlimited Mileage Protection Plan

For greater peace-of-mind enjoyment of your new Jetta, we've



The new Jetta is a mechanical masterpiece—an exceptional example of superb German engineering.

introduced a new Protection Plan that's as simple and straightforward as a Volkswagen itself.

Your new Jetta is protected by a 2-year unlimited mileage limited warranty on the entire vehicle (except tires), and a 3-year unlimited mileage limited warranty on rust perforation. See your U.S. Volkswagen dealer for details.

Isn't it nice to feel secure in your decision to drive a new Volkswagen?



Manufacturing and assembly of Jetta takes place at Volkswagen World Headquarters in Wolfsburg, West Germany.

The Jetta comes equipped with different powerplants to meet different driving needs. You can choose a 1.8 liter fuel-injected gasoline engine or a 1.6 liter Diesel coupled with a standard 5-speed transmission. An automatic transmission is optional with the gasoline engine. And with the Jetta GL, you can also opt for a 1.6 liter Turbo Diesel with a 5-speed transmission.

The Jetta then puts at your disposal all the sophisticated engineering

features needed to utilize this power to the fullest. Rack and pinion steering, 4-wheel independent suspension. Power front-disc brakes. And more.

The result is a German road car that's sure-footed on country lanes. Rock-steady on the highway. And still miserly enough to be called a German efficiency\* car.



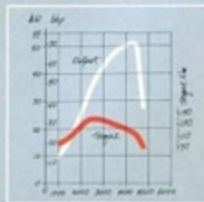
*Whip-around taillights provide greater visibility of Jetta at night and during inclement weather.*



*\*See EPA mileage figures on specifications page.*



*Jetta's new turbo diesel engine combines spirited performance with exceptional fuel efficiency.*



THE COMFORT OF SECURITY IS BUILT-IN



Since a true German road car must be prepared for virtually every driving eventuality, our German engineers have endowed the Jetta with a long list of standard convenience features that act as comforting security measures as well.

These include aerodynamic Eurostyle halogen headlights to cut the darkness more effectively. Tinted glass to cut down glare. Intermittent wipers. Rear window defroster. And remote control mirrors.

The Jetta also boasts a feature that even some of the most sophisticated European road cars lack: front-wheel drive. This adds a new dimension of directional control and provides extra traction in even the foulest weather.

The Jetta is one German road car that does all it can to make sure you stay on the road.



Standard 5-speed transmission and steel belted radial tires enhance Jetta's directional stability.

Full wheel covers are a dealer installed option on base Jetta models.



Eurostyle aerodynamic headlights help lower Jetta's drag coefficient to 0.36.





The enthusiast with a passion for performance knows at once he is in full control behind the wheel of a Jetta. The ergonomics are superb. The full instrumentation can be monitored in a glance. And all critical controls are within fingertip reach.

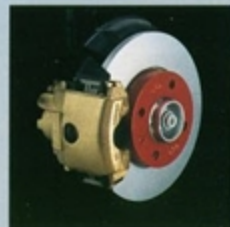
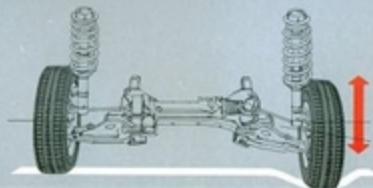
Nose into a sharp curve and the track-correcting rear axle minimizes oversteering and provides better control during hard cornering. Should one of the front wheels stray onto a soft or slippery surface, the special

front suspension helps prevent the car from pulling to one side and gets it back on track again. The dual-diagonal braking system helps assure safe, secure stops. While the wide power range of the engine takes much of the anxiety out of passing situations, since it provides a reserve of power without the usual downshifting.

The Jetta not only puts you in charge. The Jetta keeps you in charge.



*Standard front disc brakes and an independent rear suspension contribute towards Jetta's exceptional maneuverability.*



Inside the Jetta, you'll notice that road noise is extremely low while the comfort level is exceptionally high. The Jetta seats five, with more than ample head room, leg room and elbow room.

The fully reclining front bucket seats with adjustable headrests offer superb comfort, while lateral supports hold you firmly in place during spirited touring. To keep you constantly refreshed and alert, the Jetta features a special ventilation sys-

tem that is not affected by road speed changes.

We suspect your luggage will enjoy the ride as much as you, since the Jetta sports one of the largest trunks in its class: an astonishing 16.6 cubic feet. Now it'll be easy to get everything you need into your trunk. And just as easy to get it out again.



## ENGINEERED TO PERFORM, BUILT TO LAST

Our German engineers endowed the Jetta with some of the most sophisticated engineering features in the automotive world. Then they built into it the kind of durability that will allow you to enjoy its outstanding performance for years to come.

### Engineering excellence

Since the Jetta is all-new from the ground up, everywhere you look—from its conception in our design studios, to our endless hours of computer analysis, to its final assembly—

you'll find the latest in automotive technology. For example, should one of the front wheels stray off the road and onto a soft surface, the negative steering roll radius of the front suspension system helps maintain directional control and brings the car back on track again. The new track-correcting rear axle not only provides a quieter ride, it also helps minimize oversteering for better control during hard cornering. For greater safety, the Jetta has a dual-diagonal



braking system. And for road-gripping traction and directional control, front-wheel drive.

### Built for the long run

The Jetta's manufacturing process is just as advanced as its engineering. Sophisticated robots are used for both repetitive tasks as well as to achieve a continuous level of quality unattainable by more conventional production techniques.

Also, since rust and corrosion are the prime enemies of a car's longev-



Man and computer work hand in hand during the assembly of the new Jetta.



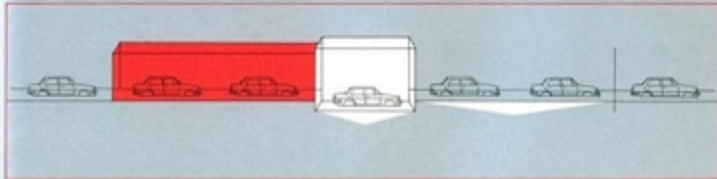
German designer sculpting clay model prototype of Jetta instrument panel.

ity, the Jetta is protected to an extraordinary degree. Galvanized steel is used in all critical areas. Folds and seals are used instead of welds in the assembly of door hatches and hood panels. In addition to a complete immersion in a cathaporetic primer bath, all the hollow sections of the body shell are flooded with hot wax to keep out moisture. Then a full undercoating is applied, as well as a stone guard spray to protect against pebble damage.

But nowhere is Volkswagen's pursuit of excellence more tenacious than in the area of quality control. Every part of every Jetta is scrutinized both by computers and by inspectors. As a result, no Jetta is allowed to leave the factory until it is Volkswagen perfect.

So don't just expect your Jetta to last longer than ordinary cars. Expect it to go on, and on and on.

Precision assembly techniques are carried out with sophisticated industrial robots.



Extensive hot wax body cavity protection is sprayed into heated Jetta bodyshells during the assembly process.



Volkswagen's famed Ebn-Testen road testing facilities near Wolfsburg, West Germany.

## PERSONALIZE YOUR JETTA

Since everyone's driving needs differ, we have included a complete selection of options that will help you equip your Jetta to meet your personal preferences.

To beat the heat, you can choose an air-conditioning system. To get a little more sun and fresh air, there's a manual sunroof.

If you'd like to let your Jetta do some of the driving work, an automatic transmission and cruise control are available. If you're a music

lover, we suggest the electronic AM/FM stereo cassette.

If you order the Jetta GL, you can also order power windows, power outside mirrors and a power central locking system.

Features and options appearing below include: power mirrors (GL), AM/FM stereo cassette, sunroof, cruise control, automatic transmission, alloy wheels, power windows (GL) and an illuminated make-up mirror (std. on GL).



## FEATURES AND OPTIONS

1-Standard 2-Optional 3-Not Available	JETTA DIESEL	JETTA	JETTA GL
<b>MECHANICAL</b>			
1.8 liter 4-cylinder diesel engine	5	—	—
1.8 liter 4-cylinder fuel-injected engine	—	5	5
1.8 liter 4-cylinder turbo-charged diesel engine	—	—	5
Electronic ignition	5	5	5
Speed transducer	5	5	5
Tachometer and digital clock	5	5	5
MacPherson strut front suspension	5	5	5
Independent rear suspension	5	5	5
Rack and pinion steering	5	5	5
Power-assisted brakes (steer-disc/rear drums)	5	5	5
Front heated metal rim	5	5	5
<b>EXTERIOR</b>			
All steel unit body construction	5	5	5
Aerodynamic rectangular halogen headlights	5	5	5
Front spoiler	5	5	5
Rear spoiler	5	5	5
Black wheelhouse flares and rocker panel trim	—	—	5
Black lower half-grille molding	5	5	5
Left and right mirror-coveted mirrors	5	5	5
Black strip roof molding	5	5	5
Hub caps	5	5	—
Full wheel covers	0	0	5
Tinted glass	5	5	5
Lockable gas cap	5	5	5
<b>INTERIOR</b>			
Full instrument panel	5	5	5
Full instrumentation including speedometer, trip odometer, clock <sup>1</sup> , fuel gauge, water temperature gauge, oil-pressure light <sup>2</sup> , and warning lights	5	5	5
Cruise controls with ashtray cigarette lighter and rear seat heater ducts	5	5	5
Fully reclining rear upholstery <sup>3</sup> front bucket seats with adjustable headrests <sup>4</sup>	5	5	5
Rear center console with integrated tray	5	5	5
Car park carpeting	5	5	5
Fully carpeted luggage compartment	—	—	5
Heavy-duty rear window deflector	5	5	5
Child-proof lock system on rear doors	5	5	5
Courtesy light and over-console illumination <sup>5</sup>	5	5	5
Removable trunk-top interior	—	—	5
4-point pretensioned seat-belting system <sup>6</sup>	—	—	5
Illuminated, lockable glove compartment	5	5	5
<b>OPTIONS</b>			
Air conditioning	0	0	0
Seatbelt with air deflator <sup>7</sup>	0	0	0
Automatic transmission	—	0	0
Power steering	0	0	0
AM/FM stereo cassette radio	0	0	0
Cruise control	0	0	0
Alloy wheels (GL) (x 13)	0	0	0
Power windows, mirrors, central locking system package	—	—	0
Power mirrors	—	—	0
Black leatherette trim	0	0	0
Clunk & rattle trim (std.)	0	0	0
Clunk & rattle trim (opt.)	0	0	0
Clunk & rattle trim (std.)	0	0	0

<sup>1</sup>Optional. <sup>2</sup>Std. on diesel models. <sup>3</sup>Manual transmission only. <sup>4</sup>Reclining cloth seats on Jetta base models. <sup>5</sup>Cloth headliner on Jetta GL. <sup>6</sup>Time delay feature on Jetta GL. <sup>7</sup>Std. on Jetta GL. <sup>8</sup>Std. on Jetta GL. <sup>9</sup>Std. on Jetta GL. <sup>10</sup>Std. on Jetta GL.

## TECHNICAL DATA/SPECIFICATIONS



## SPECIFICATIONS

	JETTA DIESEL	JETTA	JETTA TURBO DIESEL
<b>ENGINE TYPE</b>	4-cylinder, in-line, single overhead cam	4-cylinder, in-line, single overhead cam	4-cylinder, in-line, single overhead cam
<b>DISPLACEMENT</b>	2.0 liter, 97 cu. in.	2.0 liter, 120 cu. in.	2.0 liter, 97 cu. in.
<b>HORSEPOWER @ RPM (SAE Net)</b>	52 @ 4,800	63 @ 5,200	68 @ 4,800
<b>TORQUE @ RPM</b>	71 @ 3,800	80 @ 4,000	88 @ 3,800
<b>IGNITION/EXHAUST/VALVES</b>	Unlimited construction, lock-on timer limiter	Unlimited construction, lock-on timer limiter	Unlimited construction, lock-on timer limiter
<b>FRONT SUSPENSION</b>	Independent MacPherson strut coil springs, telescopic shock absorbers	Independent MacPherson strut coil springs, telescopic shock absorbers	Independent MacPherson strut coil springs, telescopic shock absorbers
<b>REAR SUSPENSION</b>	Independent torsion beam axle, coil springs, telescopic shock absorbers	Independent torsion beam axle, coil springs, telescopic shock absorbers	Independent torsion beam axle, coil springs, telescopic shock absorbers
<b>STEERING TYPE</b>	Rack and pinion	Rack and pinion	Rack and pinion
<b>TURNING CIRCLE</b>	34.4 ft.	34.4 ft.	34.4 ft.
<b>BRAKES</b>	Disc diagonal circuits with power assist (x 4) front discs, 7.3" rear drums, self-adjusting. Mechanical parking brake	Disc diagonal circuits with power assist (x 4) front discs, 7.3" rear drums, self-adjusting. Mechanical parking brake	Disc diagonal circuits with power assist (x 4) front discs, 7.3" rear drums, self-adjusting. Mechanical parking brake
<b>DIMENSIONS</b>			
Wheelbase	97.9"	97.9"	97.9"
Front track	56.9"	56.9"	56.9"
Rear track	56.9"	56.9"	56.9"
Overall length	175.7"	175.7"	175.7"
Overall width	68.9"	68.9"	68.9"
Overall height	61.5"	61.5"	61.5"
Ground clearance	4.8"	4.8"	4.8"
<b>CAPACITIES</b>			
Luggage capacity	16.8 cu. ft.	16.8 cu. ft.	16.8 cu. ft.
Fuel tank capacity	14.9 U.S. gallons	14.9 U.S. gallons	14.9 U.S. gallons
<b>WHEELS AND TIRES</b>			
Steel wheels	17 x 13	17 x 13	17 x 13
Steel wheels with hubcaps	17 x 13 (std.)	17 x 13 (std.)	17 x 13 (std.)
<b>EPA MILEAGE ESTIMATES*</b>		30 STATES	HIGHWAY
Jetta Diesel	CITY	48	48
Jetta GL with speed	27	34	34
Jetta GL with automatic	24	27	27
Jetta Turbo Diesel	27	34	34
<b>EXTERIOR COLORS</b>	Jetta and Jetta GL	Alpine White Naranja Camisa Red Diamond Silver Metallic	Polar Silver Metallic Titanium Blue Metallic Titanium Red Metallic Quartz Grey Metallic

See your Volkswagen dealer for color and trim selections. \*Remember: Use the CITY mileage for comparison to other cars. Your actual mileage may vary depending on speed, trip length and weather. Your highway mileage will probably be lower. Volkswagen of America, Inc. fulfills the specifications in this brochure to the correct at time of printing. However, specifications, standard equipment and options are subject to change without notice. Some options may be unavailable when your vehicle is built. Please ask your dealer for advice concerning current availability of options and verify that your vehicle includes the optional equipment you ordered. VOLKSWAGEN, GOLF, JETTA, SCIROCCO, QUANTUM and VANAGON are registered trademarks of VOLKSWAGENWERK, AG. Form No. 964 545 8111 (Info in U.S.A.)



## THE 1985 VOLKSWAGEN TRANSPORTATION SYSTEM

If the Jetta doesn't meet your particular driving needs, consider one of the other members of the Volkswagen family.

The Golf sets new standards of versatility, performance, roominess and efficiency for hatchbacks.

The Cabriolet combines open air touring with exhilarating performance.

The Scirocco is a true German sports coupe featuring brilliant performance at a practical price.

The Quantum Wagon is a European family wagon offering versatility, precise German engineering and outstanding driver control at an exceptionally affordable price.

The Quantum GL Sedan provides the sophisticated handling and elegant comfort of a German grand touring sedan in the classic European tradition.

The Vanagon combines the roominess and versatility of a full-size passenger van with the comfort, ease of handling and economy of a mini-van.

The Volkswagen Camper offers the camping enthusiast outstanding flexibility, comfort and convenience in a truly unique recreational vehicle.

Whichever you choose, your Volkswagen will be the single smartest purchase you can make to meet your transportation needs.



IT'S NOT A CAR  
IT'S A VOLKSWAGEN



Hosted by

A2Resource.com