



**Jetta**



Hosted by  
[A2Resource.com](http://A2Resource.com)



**Jetta has a distinctive style all its own.**

Lean. Precise. Purposeful. That's today's Jetta.

Because Jetta is built for those who appreciate cars—and for those who recognize value, Jetta doesn't disappoint in either regard. Exhibiting the superior road handling and solid crafts-

manship you would expect from its German heritage, it remains a superbly affordable sport sedan.

And this year, Jetta is better than ever. Power-assisted rack and pinion steering and new, wider tracking wheels and tires

complement its performance-enriching 1.8 litre engine with Digifant management system (or optional diesel or turbo-diesel engine). Inside, extra comforts abound with anatomically designed front and rear seats upholstered in rich velour. The front seats are also

height-adjustable, putting you in perfect position to enjoy the road ahead. And to keep you company, an AM/FM full-logic cassette stereo with anti-theft coding is standard.

But only when you take to the road can you begin to fully appreciate Jetta's precise

detail, its quiet competence, and its unmistakable road "feel". The Volkswagen philosophy has always been: never tinker with a good thing, just keep making it better and better. That's why Jetta's style is so thoroughly and uniquely its own.



## The discreet elegance of the Jetta GL

Jetta GL delivers a distinctly European driving experience.

Inside, it is comfortably appointed and spacious. Outside, it is lean, trim and thoroughly engineered for the road. The result: a rare combination of family sedan

comfort and sports sedan handling—with a very un-European price tag!

Under its hood beats a highly efficient 1.8 litre\* Digifant fuel-injected engine linked to a performance, boosting, close ratio, 5-speed manual transmission. And this

year, Jetta GL's higher output engine produces a spirited 105 horsepower.

To discreetly win you over to this power, Jetta GL's long list of standard equipment now includes wider wheels and high performance, low profile tires. Not to mention

front-wheel drive, power rack and pinion steering and independent suspension. Or the extra measure of driving control provided by front and rear stabilizer bars.

Jetta GL. Performance and value that's hard to resist.

\*A fuel-efficient 1.6 litre, 68 hp turbo-diesel engine is also available.



## Rediscover the art of interior design.

Jetta's spacious interior is a model of form and function. Available space is impressive with ample headroom and legroom for 5 adults, specially recessed front door panels for extra elbow room, and a remarkable 550 litres of trunk space—more than in

many mid-sized sedans!

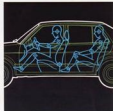
Seats and side panels are tastefully upholstered in rich velour and ergonomically designed to reduce fatigue. They are also height-adjustable and fully reclining for complete comfort. Even the seatbelt anchors are height

adjustable.

Sound dampening, fully padded cut-pile carpeting lets you listen to your favorite music in comfort from a 4-speaker AM/FM full-logic cassette stereo (or optional 6-speaker system). Central door and trunk locking are

standard on the Jetta GL, providing convenient "turn-of-the-key" security.

Just some of the thoughtful touches available with your Jetta.



Jetta GL interior shown.

1. All instrumentation is logically organized.
2. All vital controls are readily at hand.
3. Jetta's space-efficient interior design provides passengers with the room and comfort of a full-sized sedan.



**Jetta GTX.  
Get ready for a  
new level of  
excitement.**

Jetta GTX has always delivered a special kind of pulse-quickenng performance.

And this year, the new Jetta GTX possesses an inspiring 2.0 litre, 16 valve, double overhead cam power plant that turns out

134 horsepower, sweeping you from 0 to 100 km/h in the blink of an eye.

Jetta GTX comes fully equipped to handle all the excitement. Five-speed manual close ratio sport transmission, power-assist rack and pinion steering, a

sport calibrated independent front and rear suspension are all standard. As are Recaro sport seats with power height adjustment, full function trip computer, power door and trunk locking, colour-coordinated side mirrors and rear decklid spoiler. And—because

you may have passengers and luggage to think about from time to time—a remarkably roomy interior and trunk.

Car critics praise Jetta GTX for its "integrated personality", its "wonderful feel", its "sense of control and responsiveness", and for

inspiring a feeling that "the whole is greater than the sum of the parts".

We take a more straightforward view. We see Jetta GTX as a car you can count on to perform—whatever the situation.

Jetta GTX. Brace yourself!

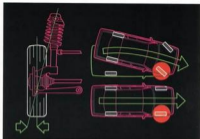
## Volkswagen engineers control.

Some of Jetta's most subtle engineering and safety refinements are hidden from view. For example, the dual brake circuits (1) are diagonally split (left front with right rear, right front with left rear) to allow for more balanced stopping in the rare event either should fail.

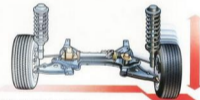
Another important safety feature is negative steering roll radius (2). The Jetta incorporates steering geometry that helps keep you in control in the event of a sudden tire failure or when braking on dissimilar surfaces. On a conventional car, a rapid tire deflation would pull the vehicle to one side. Negative



(1) Dual diagonal brake circuits.



(2) Negative steering roll radius.



(3) Rear axle and trailing arm with torsion beam stabilizer bar.

steering roll radius counteracts this tendency, helping the car maintain directional stability and enhancing driver control.

Jetta is also equipped with a track-correcting rear axle (3) which self-adjusts to compensate for understeer during hard cornering. The rear axle design uses a unique torsion beam stabilizer, which combines the stability of a

conventional solid axle with the flexibility of independent rear suspension. The result is a smoother, more stable ride over rough or uneven road surfaces.

## Volkswagen engineers security.

Jetta is also a very security-conscious automobile. The Jetta body, for example, is of unitized, all-welded "safety cell" construction (4). Impact-absorbing "crumple areas" (5) are built into both the front and rear of the body to provide passengers with additional protection.



(5) Front and rear "crumple" zones.

Wide, protective side beams provide further protection along the driver and passenger doors. The bumpers, the specially designed steer-

ing column and the dashboard are also built to cushion impact in case of collision.

These are just some examples of Volkswagen's ongoing commitment to engineering its cars with the highest degree of control and safety.



(4) Jetta body "shell".

## Jetta power: you're free to choose.

Jetta gives you a choice of 5 different engines. Standard is Jetta's 1.8 litre overhead cam gasoline engine, delivering 100 horse-

power in the base model and 105 horsepower in the Jetta GL. Both employ Volkswagen's Digifant engine management system for improved performance and economy.

Those who prefer diesel power can choose either the 1.6 litre diesel or a turbo-

charged version of the same engine. Both are the product of Volkswagen's extensive experience in diesel technology.

For the performance enthusiast, a 2.0 litre, 134 horsepower, 16 valve high output engine is standard on the GTX model.

### FUEL CONSUMPTION\* AND PERFORMANCE

	Jetta 5-speed manual diesel 1.6L	Jetta, Jetta GL 5-speed manual turbo-diesel 1.6L	Jetta, Jetta GL 5-speed manual gasoline 1.8L	Jetta, Jetta GL 3-speed automatic gasoline 1.8L	Jetta GTX 5-speed manual gasoline 2.0L
City/100 km	6.5	6.4	9.6/9.5	10.0/10.0	10.8
Highway/100 km	5.0	5.0	6.7/6.5	7.9/ 7.9	7.7
20/80 km/h (l/100 km)	11.0	6.8	7.1	8.9	8.0

\*Emissions were determined by Transport Canada's approved test methods. Actual fuel economy may vary.

Personally yours—  
genuine VW accessories.



Your Volkswagen dealer offers a number of accessories that will add to the enjoyment of your new Jetta. Here are just some of the quality VW accessories your dealer will be pleased to install on your new Jetta—now or in the future. For full details, ask for the Volkswagen accessories brochure.



**Guaranteed  
Mobility.**

In the unlikely event that your new Jetta develops a mechanical problem, your car is covered by Volkswagen's Guaranteed Mobility programme.

Should you become stranded due to mechanical failure at any time, any day of the year, anywhere in Canada or the United States, all you have to do is call our toll-free number (Canada: 1-800-263-7601; U.S.: 1-800-782-7887.) You and your car will be delivered quickly and safely into the capable hands of an authorized Volkswagen Dealer. If a Volkswagen Dealer is more than 120 kilometres away, we will tow you to the nearest participating service centre. In some instances, we will even provide overnight hotel accommodation and/or a loaner car. Free of charge. Guaranteed Mobility is good for 6 years, as long as regular maintenance and repairs are performed by an authorized Volkswagen Dealer. Your dealer has full details.

**Volkswagen  
warranty  
protection.**

Volkswagen Jetta is the product of the latest technological innovation, solid engineering and superb craftsmanship. And because Volkswagen believes in what they build, they back it with a 24-month unlimited distance bumper-to-bumper warranty. Ask your Volkswagen dealer for full details.

**6-year corrosion  
protection.**

Your new Jetta is covered by a 6-year corrosion perforation warranty no matter how far you drive. This warranty covers any repair or replacement of body sheet metal parts that have become perforated by rust. Repairs under this warranty are made free of charge. An authorized Volkswagen dealer will repair any defective part or replace it with a new genuine Volkswagen part. Your dealer has full details. Because your Jetta is corrosion-protected at the factory, there is no need to purchase additional rust-proofing. You may not be thinking 6 years ahead, but it's good to know Volkswagen is.

## Standard features and optional equipment.

	JETTA	JETTA GL	JETTA GTX
● = Standard ○ = Optional			
100 horsepower, 1.8 L. Digifant fuel-injected engine	●		
105 horsepower, 1.8 L. Digifant fuel-injected engine		●	
52 horsepower, 1.6 L. diesel engine	○		
68 horsepower, 1.6 L. turbo-diesel engine	○	○	
134 horsepower, 2.0 L, 16 valve DOHC, KE-Motronic fuel-injected engine			●
Digital electronic ignition	● 1)	● 1)	●
5-speed manual transmission	●	●	●
3-speed automatic transmission	○ 2)	○ 2)	
Power rack and pinion steering	●	●	●
Power-assisted brakes, front disc / rear drum	●	●	
Power-assisted brakes, discs front and rear			●
Anti-lock brake system			○
Long-life exhaust system	●	●	●
Tuned exhaust system with twin outlet pipes			●
Front and rear stabilizer bars	● 2)	● 2)	●
Tachometer with digital quartz chronometer	● 2)	● 2)	●
Trip odometer	●	●	●
On-board, multi-function trip computer			●
Leather-wrapped, 4-spoke sport steering wheel			●
AM/FM stereo full-logic cassette Electronic Tuning Radio with Electronic Security Code protection	●	●	●
Power antenna	○	○	
Black roof-mounted antenna			●
6-speaker sound system	○	○	●
Cruise control with resume feature	○	○	○
Fully reclining front seats with adjustable headrests	●	●	●
Rear seat headrests	●	●	●
Velour cloth interior upholstery	●	●	●
Height-adjustable front seats	●	●	●
Recaro sport seats			●
Heatable front seats	○	○	
Ski sack integrated with rear seat centre armrests	○	○	●
Air conditioning	○	○	○
Sunroof with air deflector	○	○	●
Metallic paint	○	○	○
Power windows	○	○	○
Central locking system (inc. filler cap)	○	●	●
Remote-controlled outside mirrors- left and right	●	●	●
Power outside mirrors, heatable	○	● 3)	●
2-speed wiper / washer with intermittent setting	●	●	●
Side window defoggers	●	●	●
Electric rear window defroster	●	●	●
Instant response, high capacity air blend system with 3-speed blower	●	●	●
Tinted safety glass (all around)	●	●	●
6 x 14 aerodynamic steel wheels (4) with space saver spare	●	●	●
6 x 14 light alloy wheels (4) with space saver spare	○	○	
6 x 15 light alloy wheels (4) with space saver spare			●
185/60 HR 14 steel-belted radial tires	●	●	
185/55 VR 15 steel-belted radial tires			●

1) Compression ignition on diesel / turbo-diesel 2) Not available on diesel / turbo-diesel 3) Delayed intro.

## Standard features and optional equipment.

	JETTA	JETTA GL	JETTA GTX
● = Standard ○ = Optional			
Fully padded cut-pile carpeting	●	●	●
Centre console with illuminated ashtray and lighter and rear seat heater outlet	●	●	●
Courtesy light with door activated switches and time delay	●	●	●
Illuminated luggage compartment	●	●	●
Illuminated / lockable glove compartment	●	●	●
Lockable filler cap	●	●	●
Storage trays under dash - left and right	●	●	●
Cloth covered door panels with large storage bins in front doors	●	●	●
Aerodynamic halogen headlights	●	●	●
Large front spoiler with brake cooling ducts			●
Rear decklid spoiler			●
3-point inertia-type seatbelts for front and out-board rear passengers	●	●	●
Tether anchorage for child restraint at rear seat	●	●	●

1) Compression ignition on diesel / turbo-diesel 2) Not available on diesel / turbo-diesel 3) Delayed intro.



- Optional sliding steel sunroof with wind deflector (Standard on Jetta GTX).
- Electrically-heated, remote-controlled mirrors (Standard on Jetta GL and GTX).
- The GTX sports light alloy 6 x 15 BBS wheels and low profile, high performance 185/55 VR 15 steel-belted radial tires for improved handling and traction.



- An AM/FM stereo, full-logic cassette with ETR is standard with all Jetta models, and is specially protected by a theft-detering Electronic Security Code. Should the unit ever be disconnected, it becomes inoperative until the security code is re-entered. Since you are the only one who has the code, the radio is useless to anyone else. Electronic Security Code protection. It's simple. And very effective.



Hosted by

A2Resource.com



# 1990 Jetta, Jetta GL and Jetta GTX Specifications.

## ENGINE

Type	Water-cooled, transverse front-mounted
No. of cylinders	Four in line, single overhead cam
Bore & stroke (1.8L gas) (1.6L diesel & turbo-diesel)	81.0 mm x 86.4 mm (GTX 2.0L 82.5 mm x 92.8 mm) 76.5 mm x 86.4 mm
Displacement (1.8L gas) (1.6L diesel & turbo-diesel)	1.8L (1780 cc) (GTX 2.0L 1984 cc) 1.6L (1588 cc)
SAE net HP @ rpm (1.8L gas) (1.6L diesel) (1.6L turbo-diesel)	75kw/100 HP @ 5,400 rpm (GTX 2.0L 98kw/134 HP @ 5800 rpm) 39kw/ 52 HP @ 4,900 rpm 51kw/ 68 HP @ 4,500 rpm
SAE net torque (1.8L gas) (1.6L diesel) (1.6L turbo-diesel)	146N-m/107 ft. lbs. @ 3,400 rpm (GTX 2.0L 182 N-m/133 ft. lbs. @ 4400 rpm) 97N-m/ 71 ft. lbs. @ 2,000 rpm 134N-m/ 98 ft. lbs. @ 2,500 rpm
Compression ratio (1.8L gas) (1.6L diesel) (1.6L turbo-diesel)	10.0:1 (GTX 2.0L 10.8:1) 23.0:1 23.0:1
Fuel system (1.8L gas) (1.6L diesel) (1.6L turbo-diesel)	Digital fuel injection (catalyst) (GTX) KE-Motronic Mechanical diesel injection pump Mechanical diesel injection pump with exhaust-driven turbocharger
Fuel requirement (1.8L/2.0L gas) (1.6L diesel & turbo-diesel)	Unleaded Diesel fuel No. 2
Fuel capacity	55 L
Oil capacity (incl. filter)	4.5 L
Battery	63 Amp
Alternator	65 Amp
Type of ignition (1.8L/2.0L gas) (1.6L diesel & turbo-diesel)	Digital electronic with knock sensor Compression-ignition

## DRIVE TRAIN

Type	Front-wheel drive
Clutch	Dry, single plate
Manual transmission	Fully synchronized 5-speed
Automatic transmission	3-speed with torque converter (not available on diesel, turbo-diesel or GTX)
Gear ratios (manual) (automatic)	3.45/1.94/1.44/1.13/0.89/R3 17 (GTX 3.45/2.12/1.44/1.13/0.91/R3 17) 2.71/1.50/1.00/R2-43
Final drive (manual) (automatic gas) (manual diesel & turbo-diesel)	3.67 3.41 3.94

## CHASSIS

Body	Aerodynamic, all steel unitized, bolt-on front fenders, passenger compartment designed as safety cell, front and rear designed to absorb-impact energy
Front suspension	Independent MacPherson struts, negative steering roll radius, stabilizer bar
Rear suspension	Independent axle, coil springs, telescopic shock absorbers
Braking system	Power-assisted, dual diagonal hydraulic circuits with discs at front, self-adjusting drums at rear (GTX discs front and rear)
Parking brake	Mechanical, effective on rear wheels
Rim size	6 x 14 (GTX 6 x 15)
Tire type/size	185-60 HR 14 steel-belted radials (GTX 185-55 VR15)
Steering system	Power-assisted rack and pinion with energy-absorbing steering wheel and column, plus maintenance-free tie-rods
Turning circle	10.5 m (curb to curb)

## DIMENSIONS

Wheelbase	cm 247.5	Overall width	cm 166.0 (GL/GTX 168)
Track front	142.7	Overall height (unladen)	141.5
Track rear	142.2	Ground clearance (laden)	11.7
Overall length	436.2		

Volkswagen Canada Inc. makes every effort to ensure the accuracy of all information contained in this catalogue at time of printing. All illustrations and specifications published in this catalogue are based on the latest product information available at the time of publication approval. Some features illustrated or mentioned may be extra cost options. Please confirm availability of specific features before you order your vehicle.

Volkswagen Canada Inc. reserves the right to change specifications, colours, materials and equipment without prior notice. Always consult your Volkswagen dealer for the latest specifications.

Volkswagen Canada Inc. 12M-527E  
Printed in Canada 10/89 114/56 MMT

SEATBELTS SAVE LIVES.

Hosted by  
A2Resource.com