

WIN
A CORRADO
Sweepstakes
See inside for details.

1 9 9 0



Volkswagen



Scanned for
A2Resource.com

1990 Corrado

It will change the way you think about Volkswagen, very quickly.

Volkswagen is proud to introduce a serious tool for enthusiasts—the 1990 Corrado.

There has never been a faster Volkswagen. And there has never been a Volkswagen more purposefully built to deliver sheer driving excitement.

Everything about Corrado is designed to enhance driver control. A long list of standard features includes a supercharged

cooled, G60 engine. Four-wheel independent suspension and 4-wheel power disc brakes. A rear deck spoiler that automatically rises at speeds over 45 mph. And a sleek, aero shape—lovingly handcrafted at the famed Karmann Coachworks.

And while Corrado's numbers are impressive—0 to 60 in 7.5 seconds and a top track speed

of 140 mph—equally impressive are the characteristics numbers can't describe. The way the suspension communicates with the road. The way the steering mirrors the driver's moves. The way you feel behind the wheel.


The new Volkswagen Corrado. It will change the way you think about Volkswagen, very quickly.

Corrado has all the credentials that make it a European sports car and more.

- A drivetrain powered by a unique G60 supercharged engine that delivers lag-free acceleration.
- A suspension and steering system for roadhugging control.
- A brake system that provides reliable stopping power, especially when equipped with optional Teves® ABS.
- An aerodynamic body, with a low coefficient of drag and speed-activated rear spoiler.
- Craftsmanship of the highest caliber by Karmann Coachworks, known throughout the world for state-of-the-art technology and old world quality.



Specifications

	Corrado
Engine Type	4-cylinder, in-line, OHV, G60 supercharged
Displacement	1.8 liter, 109 cu. in.
Horsepower @ RPM (SAE net)	156 @ 5000 rpm
Torque @ RPM	106 ft.-lbs. @ 4000-rpm
Body/Frame Construction	Unitized construction, built-in front fenders
Front Suspension	Independent MacPherson struts, coil springs, telescopic shock absorbers, 18mm stabilizer bar
Rear Suspension	Independent torsion-beam axle with trailing arms, coil springs, telescopic shock absorbers, stabilizer bar
Steering Type	Power-assisted rack and pinion
Turning Circle	34.4 ft.
Brakes	11" ventilated power front discs, 9" solid power rear discs
Dimensions	
Wheelbase	97.3 in.
Overall Width	66.9 in.
Front Track	56.5 in.
Overall Height	51.9 in.
Rear Track	56.2 in.
Ground Clearance	4.6 in.
Overall Length	158.4 in.
Curb Weight	2690 lb.
Capacities	
Interior volume	79.9 cu. ft.
Trunk volume	16.6 cu. ft.
Fuel tank capacity	14.5 gallons
Wheels and tires	
Wheels	6.0 x 15 light alloy
Tires	195/50VR15 steel belted radials
EPA Mileage Estimator*	90 States City Hwy 5-speed manual  21 28

*Remember: Use the EPA estimated mileage for comparison to others. Your actual mileage may vary depending on speed, trip length and weather.

1990 Passat

It's the biggest news from Volkswagen in years.

Introducing the all-new Volkswagen Passat. It's the bigger Volkswagen—a mid-sized European sedan and wagon designed to meet the needs of your growing family. And it comes with contemporary aerodynamic styling and a 16-valve engine that produces more horsepower and torque than competitive models from Honda, Mazda and Toyota.

The biggest news of all is inside. Passat's interior space is larger than most cars in its midsize class, with room for 5 adults. And Passat sets a new standard of comfort with large, fully adjustable, orthopedically designed seats in both the front and rear. Plus, Passat offers the flexibility of a split rear seat and one of the largest trunks in its class.

It all adds up to more space and more comfort, European good looks and the kind of German quality you've come to expect from Volkswagen. The 1990 Passat. It's the biggest news from Volkswagen in years.

Passat is the spacious, new European family car from Volkswagen.

- Interior space that's larger than most cars in its midsize class. Larger than Mitsubishi Galant, Acura Legend and the BMW 5 Series.
- Interior space that's larger than many luxury entries, too. Including the prestigious Acura Legend, Mercedes 3 Series, BMW 5 Series and even the "spacious" Volvo 7 Series.
- Fourteen cubic feet of trunk capacity. More than the Mitsubishi Galant, BMW 735i and Toyota Camry models.
- A new standard of comfort for Volkswagen, with large, fully adjustable seats in the front and rear.



Specifications

	Passat
Engine Type	4-cylinder, in-line, 16-valve
Displacement	171 cu. in. (1,984 cc)
Horsepower	134 @ 5800 rpm (SAE net)
Torque @ RPM	133 ft.-lbs. @ 4400 rpm
Front Suspension	Independent MacPherson struts, 15mm stabilizer bar, coil springs, telescopic shocks
Rear Suspension	Independent torsion beam axle, 20mm stabilizer bar, coil springs, telescopic shocks
Brakes	Diagonal-dual circuitry with power assist, vent 10.1" discs front, solid 8.9" disc rear, self-adjusting (ABS optional), mechanical parking brake
Dimensions	
EPA class	Midsize
Wheelbase	103.3" (2,623 mm)
Length	180.0" (4,573 mm)
Width	67.1" (1,704 mm)
Capacities	
Luggage capacity	14.2 cu. ft.
Fuel tank capacity	18.5 U.S. gal./reg. unleaded
Seating capacity	5
Wheels and tires	
Wheels	6.0 x 16 light alloy
Steel wheels	6" x 14"
Steel belted radial	195/60R14V
EPA Mileage Estimates*	
	50 States
	City Hwy
Manual	21 30
Automatic	26 35

*Remember: Use the EPA estimated mileage for comparison to others. Your actual mileage may vary depending on speed, trip length and weather.



1990 Fox

Our idea of an entry level car comes with 42 standard features.

The price of a Fox tells you it's an economy car, but its quality engineering and 42 standard features tell you it's a Volkswagen.

The Fox is designed to deliver contemporary world-class technology at an affordable price. Beneath its hood is an energetic 1.8 liter engine that features fuel injection for responsive power and efficiency.

The lively Fox engine is

matched to a fully synchronized 4-speed transmission (5-speed on the Fox GL Sport) to deliver the engine's power smoothly and efficiently.

A contemporary 4-wheel independent suspension system provides confident roadholding and makes the Fox more enjoyable to drive.

And every Fox is equipped with front-wheel drive for greater

traction and control on varying road surfaces.

There are 42 standard reasons to buy a new Fox, plus one that is outstanding: there's Volkswagen value in every Fox we sell.

Fox is the entry level car with plenty of common sense.

- Real car value at an entry level price.
- A long list of standard features like full carpeting, reclining bucket seats, rear window defroster and much more.
- The Fox GL has a powerful 1.8 liter engine that's larger than competitive models such as Honda Civic DX and Nissan Sentra E.
- A range of models to suit your needs, including 2- and 4-door models plus the GL Sport and Wagon.



Specifications

	Fox
Engine Type	4-cylinder, in-line, OHV
Displacement	1.8 liter, 109 cu. in.
Horsepower @ RPM (SAE net)	81 @ 5600 rpm
Torque @ RPM	93 ft.-lbs. @ 3250 rpm
Body/Frame Construction	Unitized construction, both on front fenders
Front Suspension	Independent MacPherson struts, coil springs, telescopic shock absorbers, 18mm stabilizer bar
Rear Suspension	Independent stabilizer axle, coil springs, telescopic shock absorbers
Steering Type	Rack and pinion
Turning Circle	31.5 ft.
Brakes	Dual diagonal circuits with power assist, 9.6" front discs, 7.1" rear drums, 17.5" on Wagon, self-adjusting Mechanical parking brake
Dimensions	
Wheelbase	92.8 in.
Overall Width	63.0 in. (63.9 in. Wagon)
Front Track	53.1 in.
Overall Height	53.7 in. (54.5 in. Wagon)
Rear Track	53.9 in.
Ground Clearance	5.5 in.
Capacities	
Cargo capacity	6.9 cu. ft. (Sedan) 33.4 cu. ft. (Wagon) 61.8 cu. ft. with rear seat folded
Fuel tank capacity	12.4 U.S. gallons
Wheels and tires	
Steel wheels	5.1 x 13, 9 1/2 x 13 alloy wheels on GL Sport
Radial tires	195R135 (2-door) 175/70R135 (Fox GL Sedan and Wagon)
EPA Mileage Estimates*	50 States
	City Hwy
4-speed manual	26 30
5-speed manual	24 29

*Remember: Use the EPA estimated mileage for comparison to others. Your actual mileage may vary depending on speed, trip length and weather.



1990 Golf/GTI

Performance, practicality and price.

Golf/GTI owners expect a lot from their car. They want a car that's quick and agile. They want fuel efficiency, versatility and comfort. They want a car that's built to last. And affordable.

With Golf and GTI they get it. And so can you. Golf is the best-selling car in Europe, outselling every rival from France, Italy, Germany and Japan.* The sporty GTI is a

world favorite among those who demand performance.

One reason for Golf/GTI's extraordinary success is their patented Digifant™ electronic engine management system. With it, you're assured smoother, crisper, response across the engine's entire operating range. Golf and GTI are also extraordinarily roomy inside. In fact, they have more combined pas-

senger room and cargo area than any hatchback in their class—more than Toyota Tercel, Honda Civic EX and Ford Escort LX. So it's little wonder more than 10 million Volkswagen drivers know a lot about automotive value. After all, they've learned it from buying a lot of Golfs and GTIs.

*Based on manufacturer's retail sales report for model years '81, '86 and '88.

Once again Golf/GTI set the standard for hatchbacks.

- Hatchback versatility with the convenience of a folding rear seat.
- Responsive handling of front-wheel drive and a patented track-correcting rear axle.
- More combined passenger and cargo area than any hatchback in their class.
- Golf GL's 1.8 liter engine is more powerful than Ford Escort and Honda Civic.
- Sporty GTI has an independent sports suspension and 14 inch alloy wheels.



Specifications

	GL	GTI
Engine Type	4-cyl. in-line, OHV	4-cyl. in-line, OHV
Displacement	1.8 liter, 109 cu. in.	1.8 liter, 109 cu. in.
Horsepower @ RPM (SAE net)	100 @ 5400	105 @ 5400**
Torque @ RPM	107 ft.-lbs. @ 3400 <small>**100 California</small>	110 ft.-lbs. @ 3400** <small>**107 California</small>

Body/Frame Construction Uniflex construction, both on front fenders

Front Suspension Independent MacPherson struts, coil springs, telescopic shock absorbers, 15mm stabilizer bar

Rear Suspension Independent torsion beam axle, coil springs, telescopic shock absorbers, 20mm stabilizer bar

Brakes Dual-diagonal circuits with power assist, 9.4" solid front discs, 7.1" rear drums, self-adjusting. Mechanical parking brake.

Dimensions			
Wheelbase	97.3 in.	Overall Width	66.5 in.
Front Track	56.3 in.	Overall Width	66.1 in. (GTI)
Rear Track	56.0 in.	Overall Height	55.7 in.
Overall Length	158.0 in.	Ground Clearance	4.6 in.

Capacities	
2 Dr. Luggage capacity	179 cu. ft., 39.6 cu. ft. (rear seat folded)
4 Dr. Luggage capacity	176 cu. ft., 39.6 cu. ft. (rear seat folded)
Fuel tank capacity	14.5 U.S. gallons

Wheels and tires	
Steel wheels	5 1/2 x 13, 5 1/2 x 14 alloy (GTI)
Radial tires	175/70R13T, 185/60R14 (GTI)

EPA Mileage Estimate*	50 States	
	City	Highway
5-speed manual	25	32
3-speed manual	23	28

*Remember: Use the EPA-estimated mileage for comparison to others. Your actual mileage may vary depending on speed, trip length and weather.



1990 Jetta

Volkswagen's affordable road car.

At Volkswagen, we think there's only one thing better than a true European road car: a true European road car at a price you can afford.

That's the idea behind the Volkswagen Jetta. Jetta delivers comfort, performance and sheer driving satisfaction. All at an affordable price.

Jetta's features work together to give you a true sense of

comfort and driver control. The Jetta's torsion beam rear suspension functions as an integral stabilizer to help minimize body lean during hard cornering. And a patented track-correcting rear axle eliminates steering effect from the rear wheels, a reassuring feature when road conditions are less than ideal.

Other Jetta standard features include power rack-and-pinion

steering, power front disc brakes, steel belted radial tires and front-wheel drive.

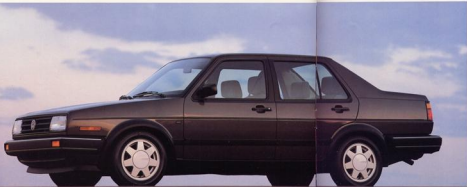
Plus, Jetta has one of the largest trunks in its class—even larger than such luxury cars as the Mercedes Benz 300 Series.

It's easy to see why Jetta is the best-selling European nameplate in America.*

*Based on manufacturer's retail sales report for model years '89, '88 and '88.

Jetta is the affordable European road car.

- A drivetrain powered by a 1.8 liter Digifant™ fuel-injected engine.
- Precise road handling with power rack-and-pinion steering and fully independent suspension.
- A spacious interior that seats five adults in comfort.
- More trunk space than most cars in its class, including Toyota Camry.
- A range of models to choose from, including the high-performance of GLI 16V, the comfort of Carat and the economy of Jetta Diesel.



Specifications

	Jetta GL/Carat/GLI 16V	
Engine Type	4-cylinder, in-line, SOHC fuel injected	
Engine type (GLI 16V)	4-cylinder, in-line, DOHC, 16-valve, fuel injected	
Displacement	1.8 liter, 108 cu. in. 2.0 liter, 121 cu. in. (GLI 16V)	
Horsepower @ RPM (SAE net)	100 @ 5400, 105 @ 5400* (Carat) 134 @ 5800 (GLI 16V)	
Torque @ RPM	107 ft.-lbs. @ 3400, 110 @ 3400** (Carat) 133 ft.-lbs. @ 4400 (GLI 16V) *at 6000 rpm **at 1200 rpm	
Front Suspension	Independent MacPherson struts, coil springs, 16mm stabilizer bar, telescopic shock absorbers	
Rear Suspension	Independent torsion beam axle, coil springs, 20mm stabilizer bar, telescopic shock absorbers	
Brakes	Dual diagonal circuits with power assist, 9.4" front discs, 10.1" ventilated front discs on GLI 16V, 7.1" solid rear drum, self-adjusting, 9.4" solid rear discs on GLI 16V, self-adjusting. Mechanical parking brake.	
Dimensions	Wheelbase 97.3 in. Overall Width 65.5 in., 66.1 in. (Carat, GLI 16V) Front Track 56.3 in. Overall Height 55.7 in. Rear Track 56.0 in. Ground Clearance 4.6 in. Overall Length 171.7 in.	
Capacities	Luggage capacity 16.6 cu. ft. Fuel tank capacity 14.5 U.S. gallons	
Wheels and tires	Steel wheels 6.5 x 14, 6.5 x 15 88R* alloy wheels on GLI 16V Steel belted radials 185/60R14V, 195/50R16V on GLI 16V	
EPA Mileage Estimates*	50 States	
	City	Highway
5-speed manual	25	32
5-speed GLI 16V	25	28
3-speed automatic	23	28
Jetta Diesel engine	37	43

*Remember: Use the EPA estimated mileage for comparison to others. Your actual mileage may vary depending on speed, trip length and weather.

1990 Cabriolet

In 30 seconds,
you'll fall in love.

That's how long it takes to put down the top, turn up the stereo and smile. The Volkswagen Cabriolet opens up a new world of driving enjoyment.

Designed by the legendary Karmann Coachworks, Cabriolet's appeal comes from more than a moveable top. It accelerates briskly and effortlessly, thanks to a new, more powerful 1.8 liter

fuel-injected engine.

The same advanced engineering is found throughout. In the responsiveness of its power-assisted rack and pinion steering. The sure-footedness of its sport-tuned suspension. And the reassuring stopping power of its ventilated power front disc brakes.

You'll see it in its hand-finished top, insulated for quiet and

comfort, yet easy to put up or down.

It takes only 30 seconds to fall for a Volkswagen Cabriolet. But its quality engineering and scores of standard features will help ensure your relationship remains strong for years to come.

Cabriolet is the distinctive European convertible.

- European styling and eye-catching exterior colors.
- An insulated convertible top that is hand finished and triple layered with a built-in scratch resistant rear glass window.
- Craftsmanship of the highest caliber by Karmann Coachworks.
- Plenty of room for you and three friends to enjoy miles of open air touring.

Specifications

	Cabriolet/Best-Seller/Boutique
Engine Type	4-cylinder, in-line, SOHC, fuel-injected
Displacement	1.8 liter, 109 cu. in.
Horsepower @ RPM (SAE net)	94 @ 5400
Torque @ RPM	100 ft.-lb. @ 3000 rpm
Body/Frame Construction	Unified construction, full-car front fenders
Front Suspension	Independent MacPherson struts, 16.5mm stabilizer bar, coil springs, telescopic shock absorbers
Rear Suspension	Independent stabilizer axle, 20.5mm stabilizer bar, coil springs, telescopic shock absorbers
Steering Type	Power-assisted rack and pinion
Turning Circle	31.2 ft.
Brakes	Dual diagonal circuits with power assist. Ventilated 9.4" front discs, 11" rear drums, self-adjusting. Mechanical parking brake.
Dimensions	
Wheelbase	94.5 in.
Front Track	55.3 in.
Rear Track	54.0 in.
Overall Length	163.1 in.
Overall Width	64.6 in.
Overall Height	55.6 in.
Ground Clearance	4.9 in.
Capacities	
Luggage capacity	6.5 cu. ft.
Fuel tank capacity	13.6 U.S. gallons
Wheels and tires	
Steel wheels	6.2 x 14
Alloy wheels on Best-Seller and Boutique	165/60R14s
Steel belted radials	165/60R14s
EPA Mileage Estimates*	50 States
	City Hwy
Cabriolet w/5-speed	25 32
Cabriolet w/automatic	23 28

*Remember: Use the EPA estimated mileage for comparison to others. Your actual mileage may vary depending on speed, trip length and weather.



1990 Vanagon and Camper

The original European mini-vans.

Over 30 years ago, Volkswagen pioneered the original mini-van. Today, the Vanagon has developed into a full line of seven unique models specifically designed to meet your driving and recreational needs.

The Vanagon, Vanagon GL and luxurious Vanagon Carat are all 7-passenger vans that offer high levels of comfort, performance and versatility. All offer

more combined cargo and passenger room than any other mini-van. And a car-like drive that's unmistakably Volkswagen.

For even greater versatility, the Multi-Van and Camper GL are week-day family vans that become your home away from home when you vacation. Multi-Van comes with a luxurious interior, a standard pop-up roof and 156 other luxury and

convenience features. Camper GL features all of the things you've come to expect in a true camping van, like running water, a cooking stove and much more.

Vanagon is more than just a mini-van.

- Room for seven adults in comfort.
- More cargo space than any other mini-van, including 49.7 cubic feet behind the rear seat.
- A 4-wheel independent suspension for a car-like ride that's unmistakably Volkswagen.
- Vanagon is shorter than a midsize station wagon, making it easy to maneuver and easy to park.
- Vanagon is available in Multi-Van and Camper models, too.



Specifications

	Vanagon/Camper/Synco/Carat/MultiVan
Engine Type	4-cylinder, horizontally opposed fuel-injection
Displacement	2.1 liter, 129 cu. in.
Horsepower @ RPM (SAE net)	90 @ 4800
Torque @ RPM	117.3 ft.-lbs. @ 3200 rpm
Front Suspension	Independent with upper and lower control arms, coil springs, telescopic shock absorbers
Rear Suspension	Independent with semi trailing arms, coil springs, telescopic shock absorbers
Steering Type	Power assisted rack and pinion
Turning Circle	35.8 ft.
Brakes	Dual hydraulic system with power assist. 10.5" front discs, 9.5" rear drums, lever-be controlled pressure-regulator. Mechanical parking brake.
Dimensions	
Wheelbase	96.0 in. *96.7 in.
Front Track	62.4 in. *61.7 in.
Rear Track	61.8 in. *61.4 in.
Overall Length	179.9 in.
Overall Width	72.6 in.
Overall Height	75.9 in. *78.9 in.
Camper Height	80.9 in. *82 in.
Ground Clearance	6.3 in. *6.3 in. *rear only
Capacities	
Cargo capacity	49.7 cu. ft. (rear seat up) 50.3 cu. ft. (rear seat down) 201.0 cu. ft. (rear seat down, camper seat removed)
Seating capacity	Vanagon 7, Camper 4
Fuel tank capacity	16.9 U.S. gallons, 16.4 U.S. gallons (Synco)
Wheels and tires	
Steel wheels	8 1/2 x 14, 6.2 x 14 alloy (Carat)
Rubber tires	185/R14C (Basic), 205/70R14 (All others)

EPA Mileage Estimates*

	50 States	
	City	Highway
Vanagon/Camper/Carat w/4-speed	18	29
Vanagon/Camper/Carat w/automatic	17	28
Vanagon/Carat/Synco models	18	29

*Remember: Use the EPA-estimated mileage for comparison to others. Your actual mileage may vary depending on speed, trip length and weather.

A WORD ABOUT UPDATED SERVICE INFORMATION: Volkswagen regularly sends its dealers useful service information about our products. Volkswagen models' product performance in the field, like the progress bulletin for servicing our products better and helping to avoid costly repairs. Now you can get these bulletins, too. To get ordering information, see a local Volkswagen dealer.

Volkswagen (United States), Inc. believes the applications in this brochure to be correct at time of printing. However, specifications, standard equipment and options are subject to change without notice. Some options may be unavailable when your vehicle is built. Please ask your dealer for advice concerning current availability of options and verify that your vehicle includes the optional equipment you ordered. Tires are supplied by various manufacturers. Camels, Fiat, GM, GMX, Alfa Romeo, Volkswagen and Volkswagen are registered trademarks of Volkswagen AG. Seatbelts save lives. Don't drink and drive. Form No. VWA-000-0111

LEH 01-2-A

ENTER THE

WIN A CORRADO Sweepstakes

Win a new Corrado or a trip to Europe and more!



You could win a 1990 Corrado, the new supercharged sports car from Volkswagen. There has never been a faster Volkswagen. And there has never been a Volkswagen more purposefully designed for sheer driving pleasure. It's the grand prize in our WIN A CORRADO SWEEPSTAKES.

SEE INSIDE FOR MORE PRIZES



It's time to think about
Volkswagen again.

TRIPS FOR 2 TO EUROPE



Second prize is a trip for two to Germany. You'll travel to Europe in the comfort of a LUFTHANSA® wide-body jet and enjoy gourmet cuisine, movies and complimentary bar service. Once you arrive, you'll experience service and hospitality in the finest European tradition, for 7 days and 6 nights at a first class STEIGENBERGER HOTEL®—where living in style has tradition.



Lufthansa

STEIGENBERGER
HOTELS

PORTABLE CELLULAR PHONES

Or you could win one of five GE® MINI™ portable cellular telephones. No matter where you are, if you're within reach of cellular service, your business, friends and family are only a phone call away.



Enter today to win one of these fabulous prizes.

VOLKSWAGEN CORRADO SWEEPSTAKES RULES

NO PURCHASE NECESSARY

A. HOW TO ENTER: To enter the sweepstakes, fill out an entry blank at the Volkswagen exhibit at your local Auto Show or at your local participating Volkswagen dealer. Or print your name, address, phone number and age on a 3" x 5" card and mail your entry, one per envelope, to Corrado Sweepstakes, P.O. Box 687, Jenkintown, PA 19046. Entries must be legible and completed in original handwritten or hand printed form. Machine copies of completed entries will not be honored. Limit one entry and one prize per household.

B. SWEEPSTAKES DEADLINES: To be eligible, entries must be deposited or postmarked by 5/15/90 and received by 5/22/90.

C. ELIGIBLE ENTRIES: Only licensed drivers, 18 years of age or older, who are residents of the U.S. are eligible to enter. Employees of Volkswagen of America, Inc., Family Guide, Inc., sweepstakes prize sponsors, their authorized dealers, agencies, subsidiaries and their immediate families are ineligible.

D. SWEEPSTAKES PRIZES: One (1) 1990 Volkswagen Corrado (MSRP \$17,900) including all standard equipment, based on availability at time of award. Color and factory optional equipment will be at the discretion of Volkswagen of America, Inc., based on availability. The winner will be responsible for any other options or accessories. The Corrado will be delivered at the dealer located closest to the winner's home address. Two (2) trips for two to Germany. Trip includes roundtrip air transportation from a Lufthansa Airlines gateway city closest to the winner's home to Munich, Germany (winners responsible for transportation to gateway city), 7 days/6 nights double occupancy hotel accommodations. Food, gratuities and ground transportation and transportation to/from Lufthansa gateway not included. (Suggested Retail Price \$3,300). Five (5) cellular phones (Suggested Retail Price \$1,300).

E. WINNER DETERMINATION: Family Guide® an independent judging organization, will determine the winners in a random drawing to be held on or about 5/30/90. The probability of winning a prize will be determined by the total number of eligible entries received.

F. WINNERS LIST: For a list of sweepstakes winners (available after 12/1/90), send a stamped, self-addressed envelope to: Corrado Sweepstakes, P.O. Box 687, Jenkintown, PA 19046.

Scanned
A2Resources.com