



**VOLKSWAGEN
1992
MODEL YEAR**

VEHICLE COMPARISON DATA

TABLE OF CONTENTS

FOX	3
GOLF	5
JETTA	7
CORRADO	9
PASSAT CL	11
PASSAT CL WAGON	13
EUROVAN GL	15

This pocket guide to our Volkswagen vehicles and the major competitive vehicles, based on annual sales in Canada, is designed to be used by you for quick reference when speaking to prospective customers. Only the key factors have been used in this booklet, as full details are to be found in the Comparison Data Pages in your Sales Handbook. Most of what prospective customers will ask for is included here. We know you will find this booklet a useful tool.

Doug Cuttell
"Sales Training"
Volkswagen Canada



VOLKSWAGEN FOX



FOX

COMPARISON
DATA

F
O
X

C
I
V
I
C

T
E
R
C
E
L

M
E
T
R
O

CX

S

	F O X	C I V I C C X	T E R C E L S	M E T R O
ENGINE	1.8(4)	1.5(4)	1.5(4)	1.0(3)
HORSEPOWER	81	102	82	55
TORQUE (ft/lbs)	93	98	89	58
WEIGHT-POWER RATIO (kg/kw)	16.0:1	12.8:1	15.4:1	19.7:1
DRAG COEFFICIENT	.46	NA	NA	NA
FUEL CONSUMPTION (city/hwy)	9.3/6.7	6.9/5.2	7.8/6.1	5.6/4.4
WARRANTY - BASIC (yr/km)	3/60	5/100	3/60	3/60
- POWERTRAIN	3/60	5/100	5/100	3/60
- CORROSION	6/UNL	5/UNL	5/UNL	6/160
ABS	NA	NA	NA	NA
SUPPLEMENTAL RESTRAINT	NA	NA	NA	NA
FOGLIGHTS	NA	NA	NA	NA
PASSENGER CAPACITY	5	5	5	4
LUGGAGE CAP (l)	280	377	303	292
FUEL CAP (l)	47	49	45	40
CURB WEIGHT (kg)	965	974	889	722
WHEELBASE (mm)	2358	2570	2380	2265
LENGTH (mm)	4151	4070	4110	3745
WIDTH (mm)	1600	1700	1645	1575
HEIGHT (mm)	1364	1346	1350	1330
HEADROOM (mm)	930	981	982	960
LEGROOM (mm)	1043	1080	1046	1079
A/C	O	O	O	O
TIRE SIZE	155/80-13	175/70-13	155/80-13	145/80-12
ALLOY WHEELS	-	-	-	-
POWER LOCKS	-	-	-	-
POWER MIRRORS	-	-	-	-
POWER WINDOWS	-	-	-	-
CRUISE CONTROL	-	-	-	-
TILT STEERING	-	-	-	-

NOTES:



HONDA CIVIC CX



TOYOTA TERCEL



GEO METRO

Hosted by

AZResource.com



VOLKSWAGEN GOLF



GOLF

GOLF

CIVIC

ESCORT

SHADOW

COMPARISON DATA

DX

LX

S

ENGINE	1.8(4)	1.5(4)	1.9(4)	2.2(4)
HORSEPOWER	100	102	88	93
TORQUE (ft/lbs)	107	98	108	122
WEIGHT/POWER RATIO (kg/kw)	13.3:1	13.1:1	16.0:1	17.1:1
DRAG COEFFICIENT	.35	NA	.34	NA
FUEL CONSUMPTION (city/hwy)	9.6/6.7	6.9/5.2	7.8/5.8	9.2/6.6
WARRANTY - BASIC (yr/km)	3/60	5/100	3/60	1/20
- POWERTRAIN	3/60	5/100	3/60	7/115
- CORROSION	6/UNL	5/UNL	6/160	7/160
ABS	NA	NA	NA	NA
SUPPLEMENTAL RESTRAINT	NA	NA	NA	O
FOGLIGHTS	NA	NA	NA	NA
PASSENGER CAPACITY	5	5	5	5
LUGGAGE CAP (l)	345	377	489	374
FUEL CAP (l)	55	49	45	53
CURB WEIGHT (kg)	995	995	1055	1180
WHEELBASE (mm)	2472	2570	2499	2463
LENGTH (mm)	4013	4070	4318	4360
WIDTH (mm)	1664	1700	1694	1710
HEIGHT (mm)	1415	1346	1334	1340
HEADROOM (mm)	968	981	975	973
LEGROOM (mm)	1003	1080	955	1055
A/C	O	O	O	O
TIRE SIZE	175/70-13	175/70-13	175/70-13	185/70-14
ALLOY WHEELS	-	-	-	-
POWER LOCKS	-	-	-	-
POWER MIRRORS	-	-	-	-
POWER WINDOWS	-	-	-	-
CRUISE CONTROL	-	-	-	-
TILT STEERING	-	-	-	-

NOTES:



HONDA CIVIC DX



FORD ESCORT



PLYMOUTH SUNDANCE "S"

Hosted by

A2Resource.com



VOLKSWAGEN JETTA



FORD TEMPO LX



TOYOTA COROLLA



DODGE SPIRIT



JETTA

COMPARISON
DATA

	J E T T A	T E M P O LX	C O R O L L A	S P I R I T
ENGINE	1.8(4)	2.3(4)	1.6(4)	2.5(4)
HORSEPOWER	100	96	102	100
TORQUE (ft/lbs)	107	128	101	135
WEIGHT/POWER RATIO (kg/kw)	13.9:1	16.0:1	13.5:1	16.7:1
DRAG COEFFICIENT	.36	.37	NA	NA
FUEL CONSUMPTION (city/hwy)	9.6/6.7	10.0/6.5	8.3/6.6	9.5/6.3
WARRANTY - BASIC (yr/km)	3/60	3/60	3/60	1/20
- POWERTRAIN	3/60	3/60	5/100	7/115
- CORROSION	6/UNL	6/160	5/UNL	7/160
ABS	NA	NA	NA	O
SUPPLEMENTAL RESTRAINT	NA	S	NA	O
FOGLIGHTS	NA	NA	O	NA
PASSENGER CAPACITY	5	5	5	5
LUGGAGE CAP (l)	550	333	360	408
FUEL CAP (l)	55	72	50	61
CURB WEIGHT (kg)	1046	1181	1024	1250
WHEELBASE (mm)	2472	2537	2430	2625
LENGTH (mm)	4362	4496	4325	4600
WIDTH (mm)	1679	1735	1655	1730
HEIGHT (mm)	1415	1344	1330	1360
HEADROOM (mm)	968	953	974	981
LEGROOM (mm)	1003	1054	1038	1071
A/C	O	O	O	O
TIRE SIZE	185-60-14	185-70-14	155-80-13	195-70-14
ALLOY WHEELS	O	O	NA	O
POWER LOCKS	O	O	NA	O
POWER MIRRORS	O	O	NA	O
POWER WINDOWS	O	O	NA	O
CRUISE CONTROL	O	O	O	O
TILT STEERING	S	S	NA	O

NOTES:

Hosted by

A2Resource.com



VOLKSWAGEN CORRADO



TOYOTA CELICA GT-S



NISSAN 240 SX LE



BMW 318i

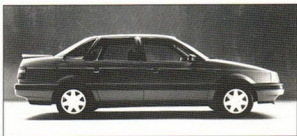


CORRADO

**COMPARISON
DATA**

	C O R R A D O	C E L I C A	2	3
			4	1
			0	8
			S	i
			X	
		GTS	LE	
ENGINE	1.8(4)	2.2(4)	2.4(4)	1.8(4)
HORSEPOWER	160	140	155	138
TORQUE (ft/lbs)	166	140	160	NA
WEIGHT/POWER RATIO (kg/kw)	9.4:1	13.1:1	10.9:1	NA
DRAG COEFFICIENT	.32	.31	.31	NA
FUEL CONSUMPTION (city/hwy)	11.4/7.7	10.7/7.5	10.7/7.9	NA
WARRANTY - BASIC (yr/km)	3/60	3/60	3/60	3/60
- POWERTRAIN	3/60	5/100	3/100	3/60
- CORROSION	6/UNL	5/UNL	6/UNL	6/UNL
ABS	S	O	S	S
SUPPLEMENTAL RESTRAINT	NA	NA	NA	O
FOGLIGHTS	NA	S	S	O
PASSENGER CAPACITY	4	4	4	4
LUGGAGE CAP (l)	300	295	402	435
FUEL CAP (l)	55	60	60	65
CURB WEIGHT (kg)	1115	1275	1266	NA
WHEELBASE (mm)	2470	2525	2475	2700
LENGTH (mm)	4048	4420	4520	4433
WIDTH (mm)	1674	1745	1690	1698
HEIGHT (mm)	1318	1285	1250	1393
HEADROOM (mm)	968	958	960	943
LEGROOM (mm)	1003	1090	1064	NA
A/C	S	O	S	O
TIRE SIZE	195/50-15	215/50-15	205/60-15	NA
ALLOY WHEELS	S	S	S	O
POWER LOCKS	S	O	S	S
POWER MIRRORS	S	S	S	S
POWER WINDOWS	S	O	S	S
CRUISE CONTROL	S	S	S	NA
TILT STEERING	S	S	S	NA

NOTES:



VOLKSWAGEN PASSAT CL



FORD TAURUS LX



HONDA ACCORD EX



TOYOTA CAMRY LE



PASSAT CL

COMPARISON
DATA

	P A S S A T	T A U R U S	A C C O R D	C A M R Y
	CL	LX	EX	LE
ENGINE	2.0(4)	3.0(6)	2.2(4)	2.2(4)
HORSEPOWER	134	140	125	130
TORQUE (ft/lbs)	133	140	125	130
WEIGHT/POWER RATIO (kg/kw)	11.5:1	14.1:1	13.5:1	14.0:1
DRAG COEFFICIENT	.31	.32	.33	.33
FUEL CONSUMPTION (city/hwy)	11.4/7.3	11.9/7.5	9.8/7.3	10.8/7.6
WARRANTY - BASIC (yr/km)	3/60	3/60	5/100	3/60
- POWERTRAIN	3/60	3/60	5/100	5/100
- CORROSION	6/UNL	6/160	5/UNL	5/UNL
ABS	O	O	NA	O
SUPPLEMENTAL RESTRAINT	NA	S (O PAS)	S	S
FOGLIGHTS	NA	NA	NA	NA
PASSENGER CAPACITY	5	5	5	5
LUGGAGE CAP (l)	495	506	408	422
FUEL CAP (l)	70	66	70	70
CURB WEIGHT (kg)	1185	1471	1286	1355
WHEELBASE (mm)	2623	2692	2720	2620
LENGTH (mm)	4573	4876	4695	4770
WIDTH (mm)	1704	1808	1725	1770
HEIGHT (mm)	1428	1374	1390	1400
HEADROOM (mm)	969	973	989	976
LEGROOM (mm)	1080	1017	1082	1105
A/C	S	S	S	S
TIRE SIZE	195/60-14	205/70-14	185/70-14	195/70-14
ALLOY WHEELS	O	O	O	O
POWER LOCKS	O	S	S	S
POWER MIRRORS	S	S	S	S
POWER WINDOWS	S	S	S	S
CRUISE CONTROL	O	S	S	S
TILT STEERING	S	S	S	S

NOTES:

Hosted by

**PASSAT CL
WAGON****COMPARISON
DATA**

	P A S S A T	T A U R U S	A C C O R D	C A M R Y
	CL	LX	EX-R	
ENGINE	2.0(4)	3.0(6)	2.2(4)	2.2(4)
HORSEPOWER	134	140	140	130
TORQUE (ft/lbs)	133	160	142	145
WEIGHT/POWER RATIO (kg/kw)	12.0:1	14.1:1	13.4:1	14.3:1
DRAG COEFFICIENT	.34	NA	NA	NA
FUEL CONSUMPTION (city/hwy)	11.4/7.3	11.8/7.4	10.5/8.1	11.3/8.0
WARRANTY - BASIC (yr./km)	3/60	3/60	5/100	3/60
- POWERTRAIN	3/60	3/60	5/100	5/100
- CORROSION	6/UNL	6/160	5/UNL	5/UNL
ABS	O	O	O	O
SUPPLEMENTAL RESTRAINT	NA	S	S	S
FOGLIGHTS	NA	NA	O	NA
PASSENGER CAPACITY	5	6	5	5
LUGGAGE CAP (l)	971	1294	977	986
FUEL CAP (l)	70	60	64.5	70
CURB WEIGHT (kg)	1205	1471	1392	1410
WHEELBASE (mm)	2623	2692	2720	2620
LENGTH (mm)	4569	4874	4725	4810
WIDTH (mm)	1704	1798	1727	1770
HEIGHT (mm)	1448	1399	1415	1430
HEADROOM (mm)	982	980	973	995
LEGROOM (mm)	1080	1059	1089	1105
A/C	S	S	S	O
TIRE SIZE	195/60-14	205/65-15	195/60-15	195/70-14
ALLOY WHEELS	O	S	S	NA
POWER LOCKS	O	S	S	O
POWER MIRRORS	S	S	S	NA
POWER WINDOWS	O	S	S	O
CRUISE CONTROL	O	S	S	S
TILT STEERING	S	S	S	S

NOTES:



VOLKSWAGEN PASSAT CL



TAURUS LX



ACCORD EX-R



TOYOTA CAMRY

Hosted by

A2Resource.com



VOLKSWAGEN EUROVAN GL



MAZDA MPV



FORD AEROSTAR XL



PLYMOUTH VOYAGER SE



EUROVAN GL

COMPARISON DATA

	E U R O V A N G L	M P V L X	A E R O S T A R X L	V O Y A G E R S E
ENGINE	2.5(5)	3.0(6)	3.0(6)	2.5(4)
HORSEPOWER	110	155	145	100
TORQUE (ft/lbs)	139	169	165	135
WEIGHT/POWER RATIO (kg/kw)	21.0:1	14.8:1	14.3:1	19.9:1
DRAG COEFFICIENT	.36	NA	NA	NA
FUEL CONSUMPTION (city/hwy)	13.8/10.1	15.0/10.0	13.0/9.5	11.2/8.5
WARRANTY - BASIC (yr/km)	3/60	3/60	3/60	1/20
- POWERTRAIN	3/60	5/100	3/60	7/115
- CORROSION	6/UNL	5/UNL	6/160	7/160
ABS	o	S(Rear)	S(Rear)	o
SUPPLEMENTAL RESTRAINT	NA	NA	S	S
FOGLIGHTS	NA	NA	NA	NA
PASSENGER CAPACITY	7	7	5	5
LUGGAGE CAP (l)	5400	NA	4781	1611
FUEL CAP (l)	80	60	79	76
CURB WEIGHT (kg)	1730	1672	1546	1493
WHEELBASE (mm)	2920	2805	3020	2850
LENGTH (mm)	4740	4465	4420	4470
WIDTH (mm)	1840	1826	1821	1770
HEIGHT (mm)	1940	1727	1851	1680
HEADROOM (mm)	998	1071	1003	990
LEGROOM (mm)	961	1032	1052	945
A/C	S	O	O	O
TIRE SIZE	205-65-15	215-65-15	215-70-14	195-75-14
ALLOY WHEELS	O	S	O	O
POWER LOCKS	O	S	O	O
POWER MIRRORS	S	S	O	S
POWER WINDOWS	O	S	O	O
CRUISE CONTROL	O	S	O	O
TILT STEERING	NA	S	NA	O

NOTES:

Hosted by

A2Resource.com