

1 9 9 3
C A B R I O L E T



Examine this very interesting possibility: a stylish convertible. An open road. The wind in your hair. Sun and blue sky above. And you. . . This picture is proposed by the Volkswagen Cabriolet. A car that lets you know in no uncertain terms that driving can still be an exhilarating experience. Cabriolet is a special Volkswagen. Because in a world filling up with convertibles-come-lately, this classic European roadster still stands out distinctly against them all.

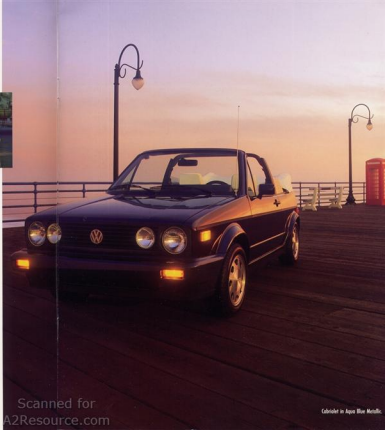
STILL ONE OF
THE BEST IDEAS
UNDER THE SUN.

And this year, Cabriolet is more special than ever. Because 1993 is your last chance to get your hands on this particular Cabriolet model—before it drives off into the sunset. We're building less than 4,000 of them, and each bears a

distinctive "Collector's Edition" insignia. Deservedly so. Even though it's engineered as a convertible from the ground up, Cabriolet is engineered first as a



Volkswagen at the world-renowned Karmann Coachworks. It offers the thrill of open touring supported by a tradition of durability and reliability. As you read these pages, you'll see that Cabriolet is designed for drivers and passengers alike. Its handling is precise. Its engine responsive. Its comfort complete. All backed by a sense of security and outright pleasure. Everyone's entitled to their day in the sun. And Cabriolet's a commitment to the belief that driving should be and can be fun—day in and day out.



Cabriolet has all the touches to make driving a pleasurable experience.

- Premium AM/FM stereo cassette unit, standard, features controls for the available 6-disc CD changer, illuminated cassette storage and anti-theft locking light.
- Power front windows with a convenient "one touch" down feature are standard.
- An optional 6-disc CD changer amplifies driving enjoyment.
- A smooth shifting automatic transmission is available.
- Cabriolet features a full complement of instruments, controls and gauges sensibly positioned. (Classic shows.)
- Leather seat linings and leatherette trim add to Classic's comfort and sportiness. Front bucket seats have adjustable head restraints; the driver's seat is also height adjustable.
- Cabriolet offers a surprising amount of trunk room. The rear seat folds down for added cargo space and easy access to the trunk.



It's amazing how much logic there is in a car as exciting as Cabriolet. The interior is designed to reduce driver

THE GREAT OUTDOORS
CALLS FOR
A GREAT INDOORS.

distractions. Analog gauges and controls are easy to read and reach. ● Cabriolet has ample room for four adults. The contoured front sport seats fully recline and offer lateral support. ● Luxury touches include power front windows, AM/FM stereo cassette sound system and, on the Cabriolet Classic, cruise control. ● And when you don't want Cabriolet to be a convertible, it doesn't remind you it is. The hand-built, fitted 3-layer top minimizes road noise and drafts. A glass rear window with electric defogger is standard. ● Cabriolet is a unique Volkswagen, and a well put together one too.

The integrity of Volkswagen's commitment to engineering rides with every car we build. We've made Cabriolet

THE HEART AND SOUL OF EVERY VOLKSWAGEN.

a shining example of how dynamic engineering principles translate into contemporary performance technology.

6 Every Cabriolet has a proven 1.8 liter, 4-cylinder engine. Its overhead cam design allows efficient operation, longer life and minimal maintenance. Digital electronic fuel injection assures balanced, responsive performance. Inside the engine an advanced control unit can tell the technician's diagnostic computer the status of various systems,

including ignition, fuel injection and even the air bag. 7 Underneath, the sport-tuned independent front suspension has MacPherson struts, coil springs and a stabilizer bar. The independent rear suspension also features a stabilizer bar. The result is a flat, tight ride with predictable handling and control.

8 Power-assisted rack-and-pinion steering keeps a driver in touch with the road. Power ventilated front disc/rear drum brakes assure effective stopping. And the front-wheel drive transaxle provides superb traction. 9 Engineering is what gives Cabriolet its Fahrvergnügen, the distinctly European driving experience you can appreciate only in a Volkswagen.



Cabriolet Classic in Classic Green Metallic.



Scanned for

Volkswagen's advanced engineering technology makes Cabriolet a smooth responsive performer.

11 Cabriolet's 1.8 liter, in-line, 4-cylinder engine provides spirited fuel injected performance and excellent fuel economy.*

12 Digital fuel injection electronically meters out precise amounts of fuel to each cylinder to assure smooth, peak performance.

13 The 5-speed close-ratio manual transmission has gearing set to give Cabriolet spirited performance while maintaining efficiency.

14 The sport-tuned front suspension uses MacPherson struts, coil springs and a 16.5mm stabilizer bar for handling control.

15 Power front/rear brake fans is assured with Cabriolet's power-assisted ventilated front disc/rear self-adjusting drum brakes.

*See DR estimates on Page 10.

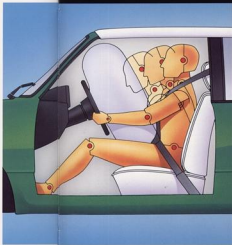
The new Cabriolet is an exciting car to drive, turning every drive into a refreshing experience. It's also a safe car, with advanced safety features that make peace of mind a constant companion. ● In its most recent report, the Insurance Institute for Highway Safety cited Cabriolet lowest in fatalities per 10,000 cars registered in its

**LOOK OVER A
CABRIOLET. YOU'LL SEE
NOTHING HAS BEEN
OVERLOOKED.**

class of 2-door small cars.* While we're proud of this honor, what pleases us most is that it demonstrates that the Volkswagen attitude toward safety is integrated into every vehicle we build—even a convertible. ● Cabriolet has a standard driver's side air bag. But the protection doesn't stop—or start—there. Its body is a welded steel cell with energy-absorbing crush zones

front and back. Inside, 3-point safety belts front and rear help protect driver and passengers alike in all impacts. Front seats are set in a "rising ramp" upward slant to help prevent sliding out from under the belts. A padded knee bolster also assists in reducing injuries. Of course, there are many more safety features. For a complete list, please turn to Page 10. ● Yet, while surviving an accident is obviously a key objective, avoiding one altogether is infinitely better. The engineering systems we've designed into Cabriolet—and every Volkswagen—like a dual diagonal circuit braking system and track-correcting rear axle, for example, are intended to give drivers the capabilities to maintain control while responding to road situations. ● We've provided Cabriolet what it needs to give you a true sense of driving security.

*Based on Insurance Institute for Highway Safety, Status Report, Volume 38, No. 4, 4/15/91, concerning fatality rates per 10,000 registered passenger cars. Study included 1984-1988 model year vehicles.



A driver's side air bag

**implemented exterior system,
standard on all Cabriolets, is
built into the steering wheel.**

We know our customers appreciate superior performance in comfortable, secure cars. We also know that quality, reliability, durability, overall efficiency and environmental concerns are high priorities. Our engineers always look for—and find—better, smarter ways to benefit the customer.



ECOLOGY

Our commitment to the protection of the environment is of the highest order. All Volkswagen procedures and vehicles reflect that interest. On-going improvements we are making include the complete elimination of ozone-depleting chlorofluorocarbons (CFC) in our vehicle air conditioning systems. Preferred water-based paints are applied in the body priming process. Top coats have no lead chromates or cadmium pigments (with no compromise on quality). Brake and clutch linings are asbestos-free. Plus, we are preparing our cars for future ease of resource recovery using materials that allow a vast majority of a vehicle to be reprocessed when separated into component parts. Worldwide we also recover and recycle over 4,000 tons of paper—the equivalent of 60,000 trees. As techniques develop, we will continue to make the improvements necessary to maintain our commitment to the environment.



DURABILITY QUALITY RELIABILITY

Volkswagen is well-known for building cars that last. To compromise here would jeopardize the high standards we place upon ourselves. That's why our engineers insist on using superior quality parts, like roller bearings that last longer than plastic bushings, cast metal parts that are stronger than stamped ones and so on. Of course, these are just two examples of many, but the point is this: quality engineering is what matters no matter how small or unnoticeable the item seems to be. That's what Volkswagen is all about.

There's much more to say about Volkswagen and Cabriolet, but the best way to experience it is to test enjoy one of our Volkswagen dealerships.

DRIVETRAIN

CONFIGURATION	Front Engine/Front Wheel Drive
ENGINE	
Type	4-cylinder in-line
Displacement	1.8 liter
Horsepower (at RPM) (SAE Net)	94 @ 5,400
Maximum Torque (at RPM) (ft. lb.)	100 @ 3,300
Valve Train	Single overhead cam, ball driven
Fuel/Air Supply	Digital multi-port electronic fuel injection
Ignition	Electronic (breakerless)
TRANSMISSION	
Standard	5-speed close ratio manual
Optional	3-speed automatic

ELECTRICAL

Battery	22 Volt, 34 amp hr.
Alternator	41 amp (30 amp with air conditioning)

BODY, CHASSIS, SUSPENSION

Type	Steel, unitized construction with ball-on-front leaders
Front Suspension	Independent MacPherson strut with coil springs and 1/2 inch stabilizer bar
Rear Suspension	Independent torsion beam axle with coil springs, telescopic shock absorbers and 20.5mm stabilizer bar
Steering	Power-assisted rack and pinion
Brakes	Power-assisted 14" vented front disc, 11" self-adjusting rear drums, dual diagonal circuits
Wheels and Tires	FR15-60R-140 performance steel belted outside on 15" x 14" alloy wheels (forged alloy on Classic)

1993 EPA MILEAGE ESTIMATES
City 28
Highway 34
Manual 24 mpg, 30 mpg
Automatic 23 mpg, 26 mpg

DIMENSIONS

EXTERIOR		INTERIOR	
Wheelbase	94.5"	Front	Rear
Overall Length	203.1"	Headroom	20" x 21.4"
Overall Width	64.8"	Luggage	20.4" x 21.8"
Overall Height	55.4"	Shoulder	
Trunk (front/rear)	51.3"/54.8"	Arm	15.9" x 24.4"
Luggage (with/without)	31.2"/31.2"	Hip Room	11.0" x 41.9"
CURB WEIGHT	2,320 lbs.		
TRUNK VOLUME	4.5 cu. ft.		

SAFETY FEATURES

Labelled meets or exceeds all NHTSA safety standards. Safety features include the following:

- Adjustable headrests for front seats
- Automatic transmission shift lock
- Roofed windshield
- Brake fluid pressure loss warning light
- Center high mounted stop lamp
- Driver side air bag supplemental restraint system
- Dual diagonal circuit braking system
- Energy absorbing steel body sub-structure with front and rear crush zones
- Energy absorbing steering column
- Hazard warning flasher system
- Interior free of sharp edges
- Key-in-ignition warning
- Rear outside door locks
- Rolling ramp seat design
- Lock-carrying rear axle
- 3-point front and rear safety belts

FUNCTIONAL FEATURES

- 1.8 liter, 4-cylinder in-line engine
- 3-speed close ratio manual transmission
- Independent front and rear suspension
- Power-assisted front disc/rear drum brakes
- Power-assisted rack and pinion steering
- Spacer cover spare tire
- Windshield wiper, 2 speed with interval wipe feature
- 12.8 Gallon fuel tank

EXTERIOR FEATURES

	CARRIOLIT	CARRIOLIT CLASSIC
Alloy Wheels	ext. touring design	touring, seven-spoke
Body color trimmings, wheel opening and mirror moldings	• •	• •
Body side moldings	• •	• •

EXTERIOR FEATURES (CONT.)

	CARRIOLIT	CARRIOLIT CLASSIC
Convertible top, manually-operated, fully padded/included	• •	• •
Dual remote-controlled mirrors, body color	• •	• •
Wagon package with adjacent halogen driving lamps	• •	• •
Ultraclear fuel cap	• •	• •
Tinted glass	• •	• •

INTERIOR/COMFORT AND CONVENIENCE FEATURES

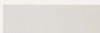
	CARRIOLIT	CARRIOLIT CLASSIC
Air conditioning	• •	• •
Center console with illuminated cassette storage	• •	• •
Cruise control	• •	• •
Day/night rearview mirror	• •	• •
Driver seat height adjustment	• •	• •
Driver side air bag supplemental restraint system	• •	• •
Electric rear window defroster	• •	• •
Folding rear seat with trunk access	• •	• •
Front courtesy light	• •	• •
Front door storage pockets	• •	• •
Roofed front seats	• •	• •
Roof-mounted cigarette lighter	• •	• •
Roof-mounted luggage compartment	• •	• •
Instrumentation, including speedometer, trip odometer, fuel level, coolant temperature, oil pressure and oil temperature gauges, voltmeter and digital clock	• •	• •
Leather-trim seat trim	• •	• •
Leather-trim including seat beltings, headrests, shift knob/lever (optional transmission) and handbrake handle	• •	• •
Leather wrapped steering wheel	• •	• •
Locking glove box	• •	• •
Passenger side vanity mirror	• •	• •
Power front windows with one-touch down feature	• •	• •
Premium AM/FM stereo cassette with CD changer control capability, security feature and 8-speaker sound system	• •	• •
Roofing front sport seats with 7-way adjustable headrests	• •	• •
3-point front and rear safety belts	• •	• •

OPTIONS

	CARRIOLIT	CARRIOLIT CLASSIC
Air conditioning	•	•
Automatic transmission	•	•
Covered metallic paint	•	•
Trunk-mounted 4-disc compact disc changer (delayed availability)	•	•

EXTERIOR COLORS

CARRIOLIT



Silver White



Flash Red



Apple Blue*

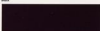


Pearl Green*

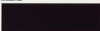
CARRIOLIT CLASSIC



Black



Bordeaux Red*



Classic Green*

*Optional metallic finish. For more accurate color representation see the 1993 Volkswagen color and upholstery guide.

VOLKSWAGEN CARRIOLIT WARRANTY

Enjoy your Carriolit and drive it with confidence. It's protected by Volkswagen's 3-year/50,000-mile powertrain limited warranty, a 6-year limited warranty covering corrosion and rust perforation and a comprehensive 2-year/24,000-mile bumper-to-bumper/50,000-mile warranty against defects in workmanship or materials and workmanship. See your local Volkswagen dealer for full details on these warranties.

A FEW WORDS ABOUT THIS BROCHURE AND UPDATED SERVICE INFORMATION:

Volkswagen (United States, Inc.) believes the items and specifications in this brochure to be correct at time of printing. However, specifications, standard equipment and optional features and colors are subject to change without notice. Some options may be unavailable when your vehicle is built. Please ask your dealer for advice concerning availability of options and verify that your vehicle includes the equipment you ordered. Tires are supplied by various manufacturers. Some vehicles may be painted with optional. Please refer to the information on the Volkswagen website for more information on required maintenance of Volkswagen AG. Volkswagen is a registered trademark of Volkswagen of America, Inc. ©1993 Volkswagen.

For further information regarding the 1993 Carriolit or any other Volkswagen model, please call 1-800-444-8882.

Seat belts save lives. Don't drink and drive. Listen to E.C.A. From No. W11 03 002.

Volkswagen regularly sends its dealers service information about our products and monitors product performance in the field. We then prepare bulletins for servicing our products and dealers to meet your needs. These bulletins are also available to you. To get servicing information, see your local Volkswagen dealer.



FAHRVERGNÜGEN.

CARRIOLIT:
THE DETAILED STORY.

1 9 9 3
C A B R I O L E T

