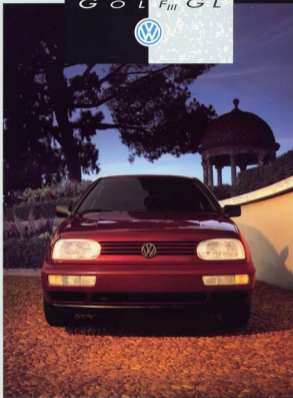


GOLF III GL



Its lines are more aerodynamic. The stance is wider, too. And the teardrop halogen headlights are definitely more

**THE NEW GOLF<sub>III</sub>  
WE CHANGED IT A  
LOT, BUT WE KEPT OUR  
COMMITMENT.**

Eurostyled. But you'll still know it's a Volkswagen Golf. And...you'll be slightly wrong. Ⓢ Because this is a new Volkswagen Golf, the Golf<sub>III</sub> GL. Europe's "Car of the Year 1992." A completely redesigned versatile hatchback that's had almost everything changed except its promise to be an affordable, reliable and thoroughly gratifying road car. Ⓢ The new Golf<sub>III</sub> GL presents the high standards of quality, durability and value recognized worldwide as synonymous with the Volkswagen

name. Volkswagen's engineering vision and design integrity have not only made it Europe's best-selling marque, but also made Golf the world's best-selling car in 1992.\* Ⓢ Golf<sub>III</sub> GL is equipped with a new fuel-injected, 2.0 liter engine for added power and acceleration. New safety features for driving security. A re-tuned 4-wheel independent suspension and power rack-and-pinion steering for tighter control. A roomy interior and even more standard equipment than its realistic price might suggest. Plus, as always, quality and the environment are of the highest priority. The new Golf<sub>III</sub> GL can turn every ride into a marvelous driving experience. That's basically what our commitment is all about. And why in the world would we change that?

\*Based on Auto Strategies International Inc. sales figures.



The new Golf<sub>®</sub> GL combines the finest virtues of a station wagon with a sedan.

- The available new 4-speed electronically-controlled automatic transmission has two integral modes: "economy" for added efficiency and "sport" for added performance. The transmission shifts between these modes depending on your driving style.
- Beverage holders, standard, are a convenient touch.
- Eight high-quality speakers, including separate woofers and tweeters, are standard.
- An available power glass moonroof gives every drive a light, breezy feel.
- The standard power central locking and anti-theft vehicle alarm systems help provide security.
- The Golf<sub>®</sub> GL interior, shown in black velvet, has ample room for five.
- The completely restyled instrument panel is clear and easy to read.
- The Golf<sub>®</sub> GL hatch area provides 17 cu. ft. of cargo. Road maul? Fold down the rear seatback and the space more than doubles to 41 cu. ft.



A good thing gets even better. ● Golf<sub>®</sub> GL's front seats are contoured and fully recline. And overall interior room has been expanded for genuine 5-passenger comfort. Cargo space is generous, but fold down the rear seatback, and it more than doubles—to 41

**THE RESULT  
OF SOME CALCULATED  
INSIDE MOVES.**

cu. ft. Golf<sub>®</sub> GL isn't just versatile, it's usable. ● Switches and gauges are sensibly positioned within the driver's line of sight and reach. No distractions here. ● Golf<sub>®</sub> GL is quieter too. Additional insulation cuts road and wind noise. And new higher output heating and available air conditioning systems keep things comfortable. ● There are a lot of pluses in a Golf<sub>®</sub> GL, but to really appreciate it, you've got to get into it. We suggest you do exactly that.

If you're curious about what you might find deep inside the new Golf<sub>GL</sub>, we can put it into a few words: advanced German engineering and European driving technology. And that means Fahrvergnügen, the distinctly European driving experience you can enjoy

**THE HEART  
AND SOUL OF EVERY  
VOLKSWAGEN.**

only in a Volkswagen. ● Golf<sub>GL</sub> GL has a new, feisty 2.0 liter, 115-hp., fuel-injected engine. It's more powerful, with high peak torque and a broad overall range for responsive passing acceleration. The engine has a Motronic® management system that continuously monitors and adjusts functions to assure smooth operation. As a result, fuel economy is maximized\* and overall performance

enhanced. ● A smooth shifting 5-speed manual transmission is standard. The newly available electronically-controlled 4-speed automatic operates in an "economy" mode for added efficiency, or a high-revving "sport" mode for spirited performance depending on your driving style. ● Golf<sub>GL</sub> GL has a wider stance front and rear for improved directional control—and a striking look. Its 4-wheel independent suspension has been re-tuned to maintain a flat ride and exact cornering. Its front-wheel drive and power-assisted rack-and-pinion steering keep you in touch with the road and its power 4-wheel disc brakes offer surefooted stopping. ● Our intent was to make Golf<sub>GL</sub> GL so versatile, it would be as much fun to drive as it would be smart to drive. Our engineering confirms that.

\*See EPA estimates at your Volkswagen retailer. Motronic is a registered trademark of the Robert Bosch Corporation.



Golf<sub>GL</sub> GL in Tornado Red.



All Volkswagens receive the benefits of insightful engineering design. Although it produces the kinds of features you may not see, it results in benefits you'll certainly feel.

■ The 4-wheel independent suspension has been re-tuned, with springs and shocks re-calibrated for better ride. The front suspension features MacPherson struts, a stabilizer bar and a separate rubber isolated subframe for increased rigidity and noise reduction.

■ The standard 5-speed manual transmission makes shifting smooth and easy.

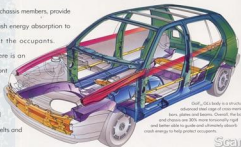
Because we have no higher priority than the safety of all our cars' occupants, designing the Golf<sub>Mk</sub> GL also meant paying special attention to this area. ● The body is a virtual cage of steel beams, plates and tubes—including side impact bars. We've enhanced

LOOK OVER A GOLF<sub>Mk</sub> GL.  
YOU'LL SEE NOTHING  
HAS BEEN  
OVERLOOKED.

body and chassis rigidity. Front and rear "crumple" zones, like those created by our exclusive mesh seam welded front chassis members, provide increased crash energy absorption to help protect the occupants.

● Inside, there is an automatic front safety belt system with supplemental manual lap belts and

two rear 3-point safety belts and a rear center lap belt. ● Yet, while surviving an accident is obviously a key objective, avoiding one altogether is infinitely better. ● Golf<sub>Mk</sub> GL has many features to help a driver with unexpected situations. Bigger brakes in a dual diagonal circuit system, responsive power-assisted rack-and-pinion steering, firm suspension and more, help provide the ability to maintain control while reacting to road surprises. For a complete list of safety features, please turn to Page 10. ● Golf<sub>Mk</sub> GL has exactly what it takes to give you true driving security and pure driving enjoyment.



Golf<sub>Mk</sub> GL's body is a structurally advanced steel cage of cross members, bars, plates and beams. Overall, the body and chassis are 30% more torsionally rigid and better able to guide and ultimately absorb crash energy to help protect occupants.

We know our customers appreciate superior performance in comfortable, secure cars. We also know these same people make quality, reliability, durability, overall efficiency and environmental concerns high priorities too. How well our cars do in these areas determines our success with you. For these reasons, our engineers are always looking for—and finding—better, smarter ways to benefit the customer. Following are a few examples of how our commitment shows.



#### ECOLOGY

Volkswagen is a leader among auto manufacturers in its on-going commitment to the environment. All Volkswagen procedures and vehicles reflect that interest. We have completely eliminated use of ozone-depleting chlorofluorocarbons (CFCs) in the Golf<sub>Mk</sub> GL air conditioning system. Paint top coats do not use lead chromates or cadmium pigments (with no compromise in quality). Brake and clutch linings are asbestos-free. Plus, we are preparing our cars for future ease of resource recovery, using materials that allow a vast majority of a vehicle to be reprocessed when separated into component parts. Golf<sub>Mk</sub> GL's plastic components are coded specifically for that purpose. Worldwide we also recover and recycle over 4,000 tons of paper—the equivalent of 60,000 trees. As techniques develop, we will continue to make the improvements necessary to maintain our commitment to the environment.



#### DURABILITY AND RELIABILITY

Volkswagen enjoys a reputation for building dependable cars that provide lasting value. To compromise here would jeopardize the high standards we place upon our



#### QUALITY

Of late, this has been the buzzword of the industry. Sometimes it's an adjective; sometimes a noun. But more often than not, the word is used without regard as to whether or not it fits. We at Volkswagen have always focused on quality. But we believe that as often as we apply the word to our cars, it really doesn't mean anything until you apply the word to our cars. So, to reinforce our standards we put every Golf<sub>Mk</sub> GL through a series of rigorous inspections when it's built. Cars are checked, adjusted and re-checked before they leave the factory. Added retailer preparation times, supplemental test drives and early product observation systems also help to thoroughly monitor and improve Golf<sub>Mk</sub> GL quality levels.

There's much more to say about Volkswagen and Golf<sub>Mk</sub> GL, but the only way to genuinely appreciate one is to take it for a test drive at your Volkswagen retailer. We think you'll then know exactly why it's one of the most satisfying cars on the road today.

## DRIVETRAIN

<b>CONFIGURATION</b>	Front Engine/Front Wheel Drive
<b>ENGINE</b>	
Type	4-Cylinder in-line
Displacement	2.0 liter
Horsepower @ 5000 (SAE Net)	102 @ 1,500
Maximum Torque @ 3000 (SAE Net)	135 @ 1,300
Valve Train	Single overhead cam, ball-drive
Fuel-Air Supply	Pressure multi-point electronic fuel injection
Ignition	Digital electronic with knock sensor
Engine Controls	Electronic electronic engine management

<b>TRANSMISSION</b>	Standard 5-speed manual Optional electronically controlled 4-speed automatic with dual integral shift modes
---------------------	----------------------------------------------------------------------------------------------------------------

## ELECTRICAL

<b>Battery</b>	70 Ah, 60 amp hr
<b>Alternator</b>	70 amp (90 amp with air conditioning)

## BODY, CHASSIS, SUSPENSION

<b>Type</b>	Steel, unitized construction with ball-up front loader
<b>Front Suspension</b>	Independent MacPherson strut with coil springs and 20mm stabilizer bar
<b>Rear Suspension</b>	Independent torsion-beam axle with coil springs, telescopic shock absorbers and 20mm stabilizer bar
<b>Steering</b>	Power-assisted rack and pinion
<b>Brakes</b>	Power-assisted 10.1" front disc, 8.9" solid rear disc, dual diagonal circuit
<b>Wheels and Tires</b>	170-60R14 all-season steel-belted radial on 4" x 14" steel wheels (170-60R14 tires with automatic transmission)

## DIMENSIONS

<b>EXTERIOR</b>		<b>INTERIOR</b>	
Wheelbase	91.4"	Front	Rear
Overall Length	160.5"	Headroom	39.2" 39.1"
Overall Width	66.7"	Legroom	43.3" 43.4"
Overall Height	58.7"	Shoulder	
Trunk (Front/Total)	33.1/58.9"	Roam	51.8" 52.8"
Landing Grid		Rig Room	51.2" 52.5"
Trunk-to-axle	32.8 in.		

<b>COE WEIGHT</b>	
Manual	1,157 lbs.
Automatic	1,261 lbs.

## STEAM HOLDING (SH)

Rear seat up	17 cu. ft.
Rear seat folded	41 cu. ft.

## SAFETY FEATURES

Golf, II meets or exceeds all NHTSA safety standards. Safety features include the following:

- Adjustable headrests for front seats
- Automatic front safety belt system with supplemental lap belts
- Automatic transmission shift lock
- Banded windshield
- Brake fluid pressure loss warning light
- Center high mounted stop lamp
- Child safety locks on rear doors
- Collapsible energy-absorbing steering column
- Dual diagonal strut braking system
- Energy absorbing steel body side-structure with front and rear crush zones
- Energy absorbing steering wheel
- Neutral warning flasher system
- Interior free of sharp edges
- Key-in-ignition warning
- Roof cross welded front frame rail
- Non-override door locks
- Polystyrene fuel tank
- Rolling cargo seat design
- Lock-correcting rear axle
- Industry reinforcements including door sills and upper side rails and
- Instrument panel cross beam
- 3-point outboard rear safety belts with center lap belt

## FUNCTIONAL FEATURES

- 2.0 liter, 4 cylinder in-line engine
- 5-speed manual transmission
- Just shift vehicle alone system
- Independent front and rear suspension
- Power-assisted 4-wheel disc brakes
- Power-assisted rack and pinion steering
- Power door opens flip
- Wash/wax wiper, 3 speed with interval wipe feature
- 14.1 gallon fuel tank

## EXTERIOR FEATURES

- Body color grille
- Body side molding
- Deluxe full wheelcovers
- Deluxe remote-controlled mirrors
- Exterior bodged headlamps
- Front and rear spoilers
- Rear window wiper/washer system
- Side glass

## INTERIOR/COMFORT AND CONVENIENCE FEATURES

- Automatic front safety belt system with supplemental lap belts and 3-point outboard rear safety belts with center lap belt
- Control front floor mats
- Control luggage compartment with removable cover and illumination

- Center console with storage bin and beverage holder
- Daylight mirror mirror
- 8-speakers with radio prep package
- Electric rear window defroster
- Folding rear seat
- Front and rear passenger assist handles
- Front bucket seats, fully reclining with driver seat height adjustment and 2 way adjustable headrest
- Front door storage pockets
- Instrumentation, including speedometer, tachometer, trip odometer, coolant temperature gauge, fuel level gauge, service interval reminder and digital clock
- Interior lighting
- Luggage illuminated glove box
- Passenger vanity mirror
- Power central locking system, including hatch and fuel filler door and key operated "convenience door" feature for possible moonroof
- Power remote lock release
- Rear dash seat trim

## OPTIONS

<b>NEEDLES</b>	0A0	0A1	0A2
As conditioning			
Deluxe AM/FM stereo cassette with security feature	■	■	■
Power glass removal with shade	■	■	■

## REORDERING OPTIONS

- Deluxe AM/FM stereo cassette with security feature
- Electrically controlled 4 speed automatic transmission with dual integral shift mode

## COLOR AND TRIM

	<b>INTERIOR</b>	
<b>EXTERIOR COLORS</b>	Black	Beige
	Silver	White
<b>NON-METALIC</b>		
Alpine White	■	■
Torredio Red	■	■
Black	■	■
<b>OPTIONAL COORDINATE METALIC</b>		
Satin Silver	■	■
Torpedio	■	■
Front Beil?	■	■

## EXTERIOR COLORS



Alpine White



Torredio Red



Black



Satin Silver?



Torpedio?



Front Beil?

\*Optional Overcoat Beil

For more accurate color representation see the Volkswagen color and upholstery guide. †Delayed availability

## A FEW WORDS ABOUT THIS BROCHURE AND UPDATED SERVICE INFORMATION.

Volkswagen United States, Inc., believes the items and specifications in this brochure to be correct at the time of printing. However, specifications, standard equipment and options, fabric and color are subject to change without notice. Some options may be unavailable when your vehicle is built. Please talk your dealer for advice concerning availability of options and verify that your vehicle includes the equipment you selected. You are supplied by various manufacturers. Some vehicles are painted with options. Positive comments are discontinued by manufacturer's display of intention. Golf, II, Volkswagen and the Volkswagen logo are registered trademarks of Volkswagen AG. Volkswagen is a registered trademark of the Robert Bosch Corporation. Volkswagen regularly sends its readers service information about new products and service product performance in the field. We also provide bulletins for avoiding our products and helping to avoid costly repairs. These bulletins are also available to you. To get interesting information, see your local Volkswagen retailer.

© 1993 Volkswagen

For further information regarding the Golf, II or any other Volkswagen model, please call 1-800-444-9912.

Seat belts save lives. Don't drink and drive. 15% in U.S. born VW. 903-175-6661.

GOLF<sup>®</sup>  
THE DETAILED STORY.

GOLF III GL

