

National Automobiles Are regularly equipped with wood wheels and solid rubber tires, but wire wheels and pneumatic tires can be furnished when especially ordered. Our batteries are selected from the product of the best makers, thoroughly tested, and are carefully adapted in weight and power to the type of vehicle in which they are placed.

We can make prompt delivery of all styles. Terms strictly cash. Delivery F. O. B. cars Indianapolis.

✻ ✻ ✻ ✻ **GUARANTY** ✻ ✻ ✻ ✻

WE GUARANTEE the electrical and mechanical operation of each electric vehicle manufactured by us and will repair or replace any defect of material or manufacture showing within ninety days from its sale by us, provided, that before the allowance of any claim such defective or imperfect part shall be delivered to us at Indianapolis, transportation charges prepaid. This guaranty does not cover cost of repairing damages caused by accident or misuse.

The National Automobile and Electric Company.



OUR FACTORY is entirely new and modern, constructed especially for automobile manufacture, and is equipped with the latest designs of accurately working machine tools, thus giving us unequalled facilities for the production of perfect goods at a minimum of cost.

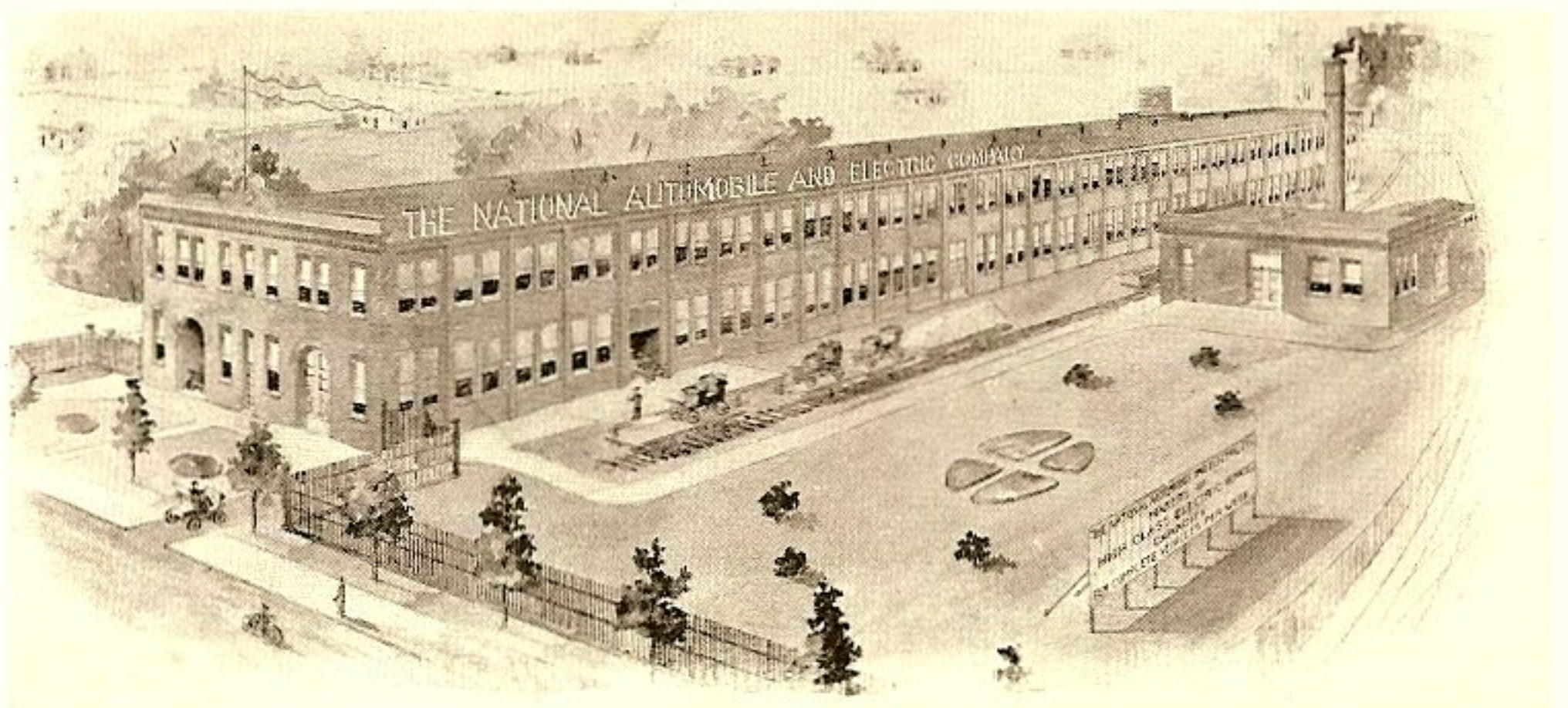
We claim for our vehicles superiority over all others in simplicity of construction, ease of handling, durability, absence of noise and other unpleasant features in operation, and elegance of design and finish.

Our vehicles are in no sense experimental. Their makers have had years of broad experience in all lines of automobile work and have applied to our product the best modern practice.

The National Automobile and Electric Company, Indianapolis, Indiana

ROGER B. McMULLEN & CO. CHICAGO, ILL.

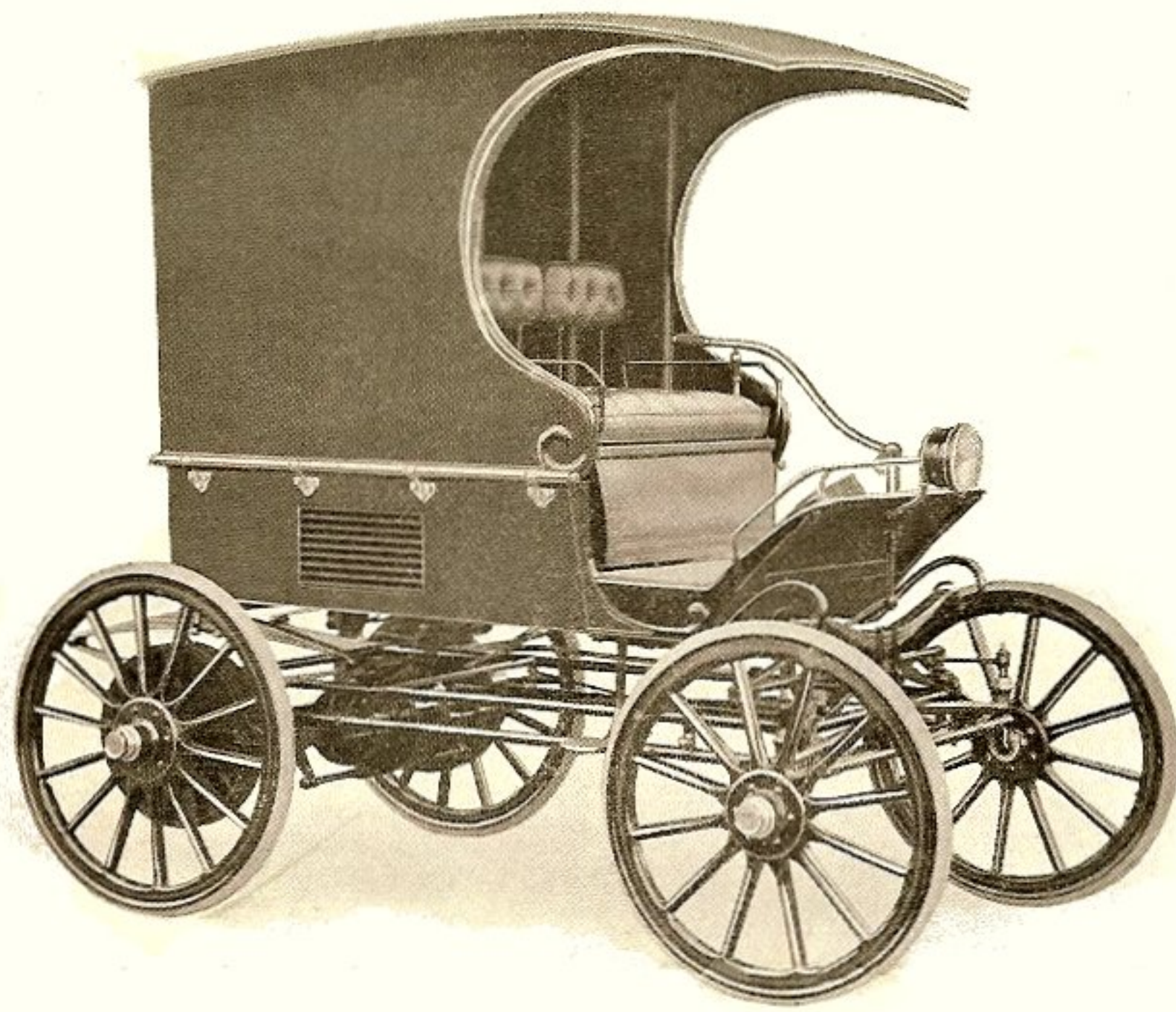
✻ ✻ ✻ General Sales Agents for United States and Canada ✻ ✻ ✻



**THE NATIONAL AUTOMOBILE AND ELECTRIC COMPANY PLANT,
INDIANAPOLIS, INDIANA, U. S. A.**

Main Building, 325 ft. by 70 ft. Power House, 55 ft. by 50 ft.

Roger B. McMullen & Co., Chicago, Ill., General Sales Agents



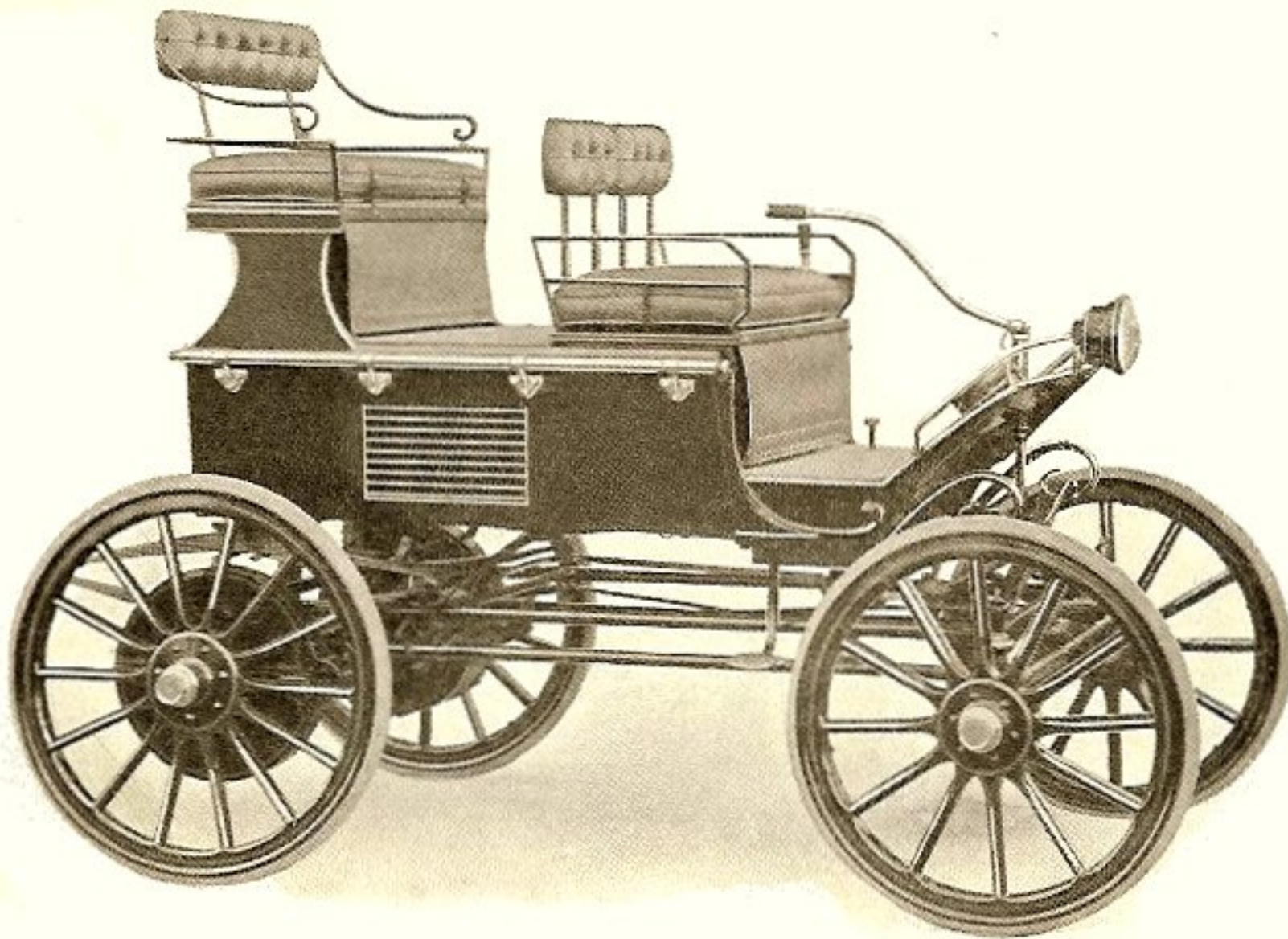
SPECIFICATIONS Style B

A vehicle for business or pleasure. The delivery top can be removed and replaced by the rear seat in two minutes, thus converting a handy delivery wagon into a perfect four-passenger break, as shown in another illustration on next fold of this sheet.

National Electric Combination Vehicle.

Style B.

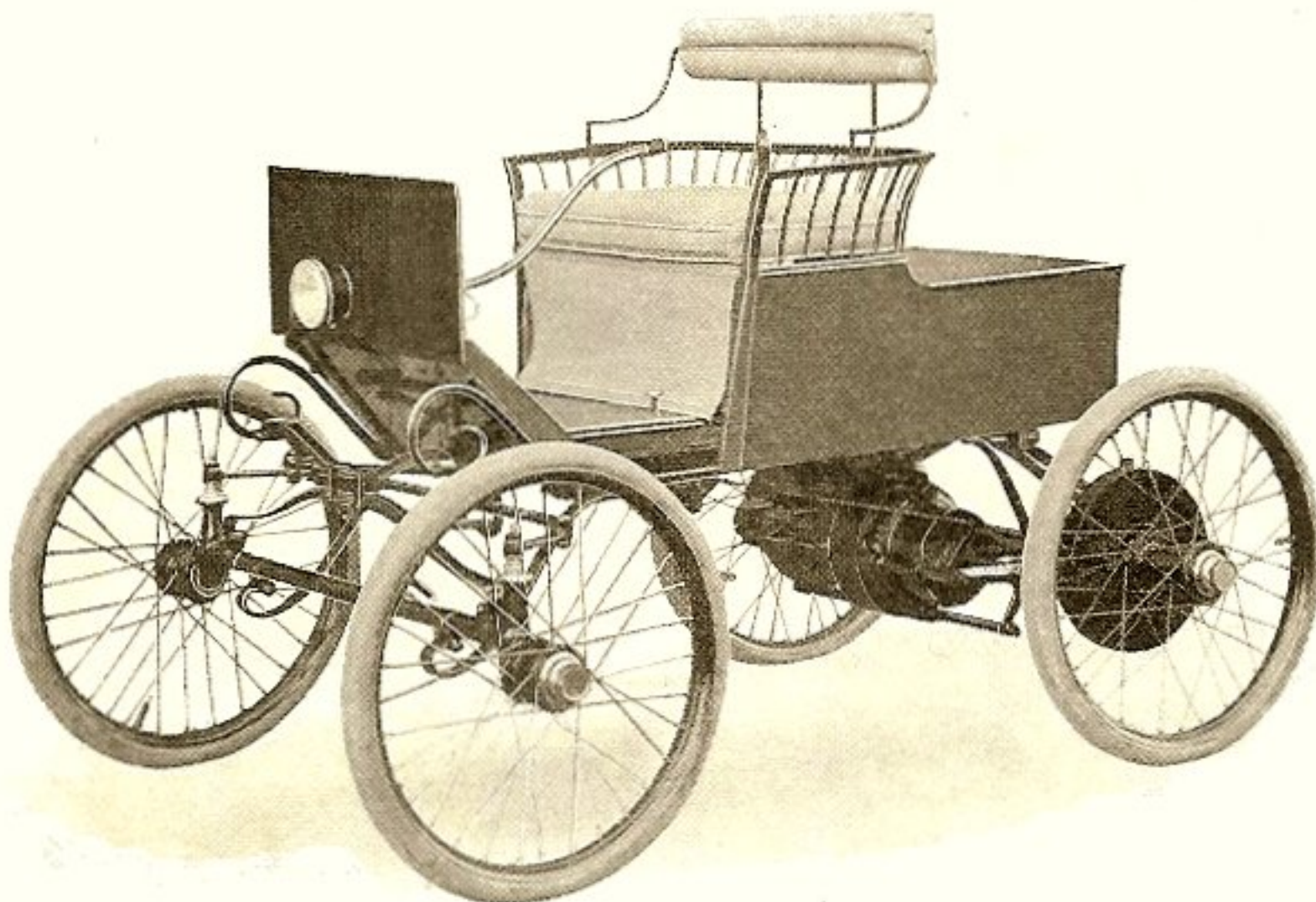
Price, \$1,500, complete.



SPECIFICATIONS Style B

See illustration of this vehicle arranged for delivery wagon on next fold of this sheet. Battery, 40 cells. Motor, $2\frac{1}{2}$ H. P. Radius of action, 45 miles. Five speeds forward, varying from 3 to 12 miles. Three speeds backward. Equipped with electric bell, electric light, and combination volt and ammeter.

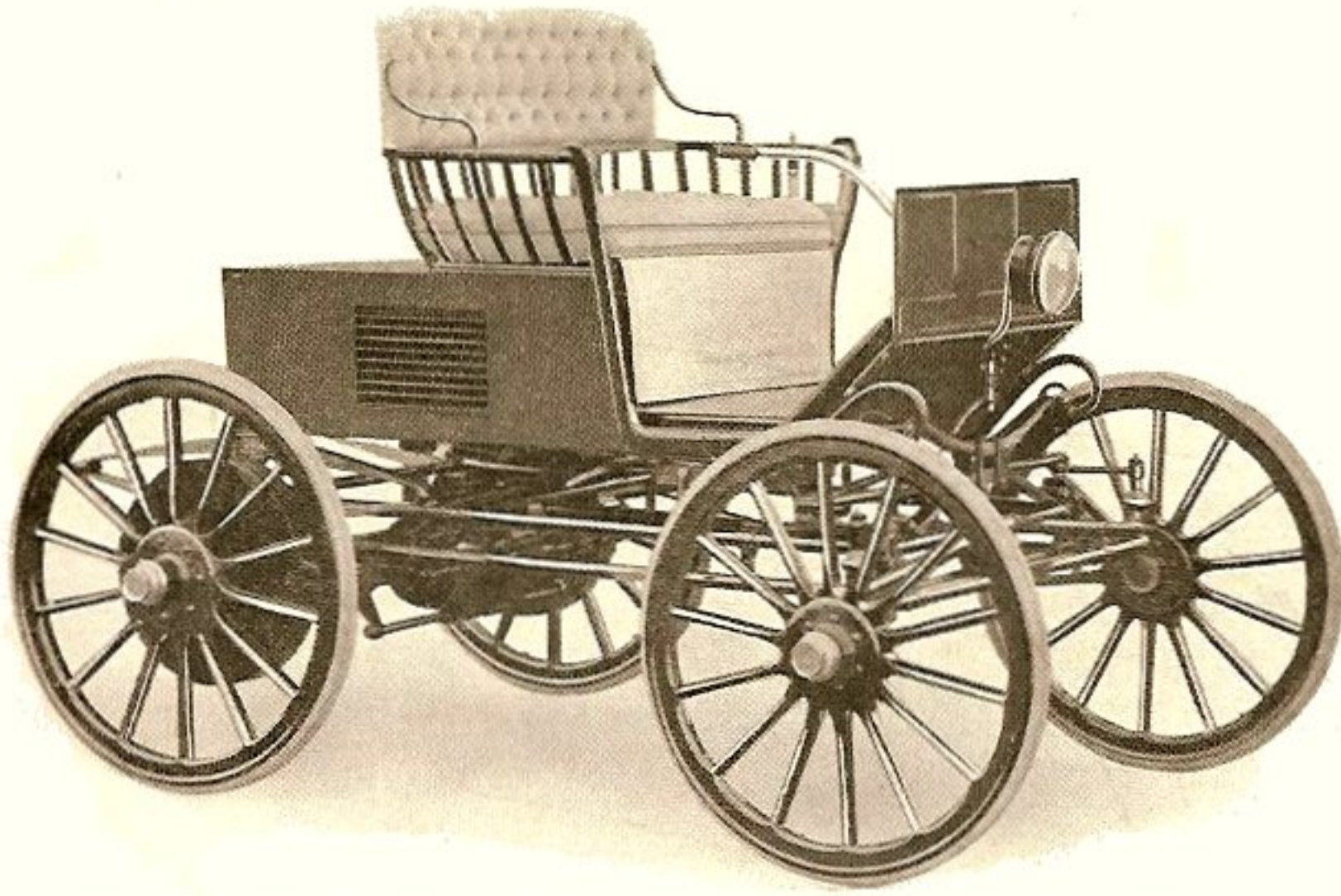
National Electric Combination Vehicle. Style B. Price, \$1,500, complete.



SPECIFICATIONS Style A

The lightest practical electric vehicle on the market. Battery, 40 cells. Motor, $1\frac{1}{2}$ H. P. Radius of action, 25 miles. Five speeds forward, varying from 3 to 14 miles per hour. Three speeds backward. Equipped with electric bell, electric light, and combination volt and ammeter.

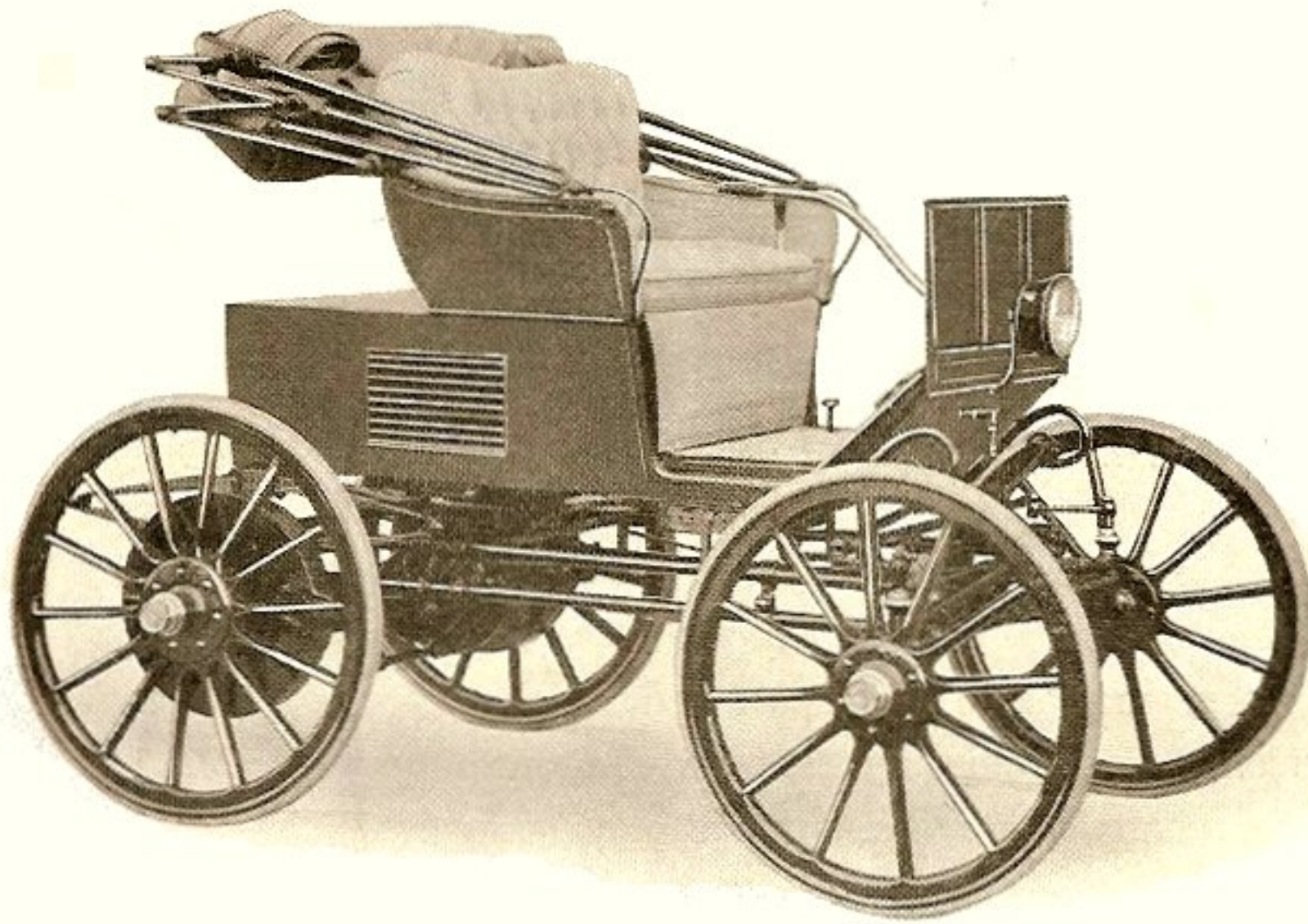
National Electric Run-About. Style A. Price, \$1,000.



National Electric Road Wagon, Open. Style G. Price, \$1,200.

SPECIFICATIONS Style G

A more powerful and more roomy vehicle for two passengers than the run-about. Battery, 40 cells. Motor, $1\frac{1}{2}$ H.P. Radius of action, 35 miles. Five speeds forward, varying from 3 to 12 miles per hour. Three speeds backward. Equipped with electric bell, electric light, and combination volt and ammeter.



National Electric Road Wagon, with Top. Style H. Price, \$1,250.

SPECIFICATIONS Style H

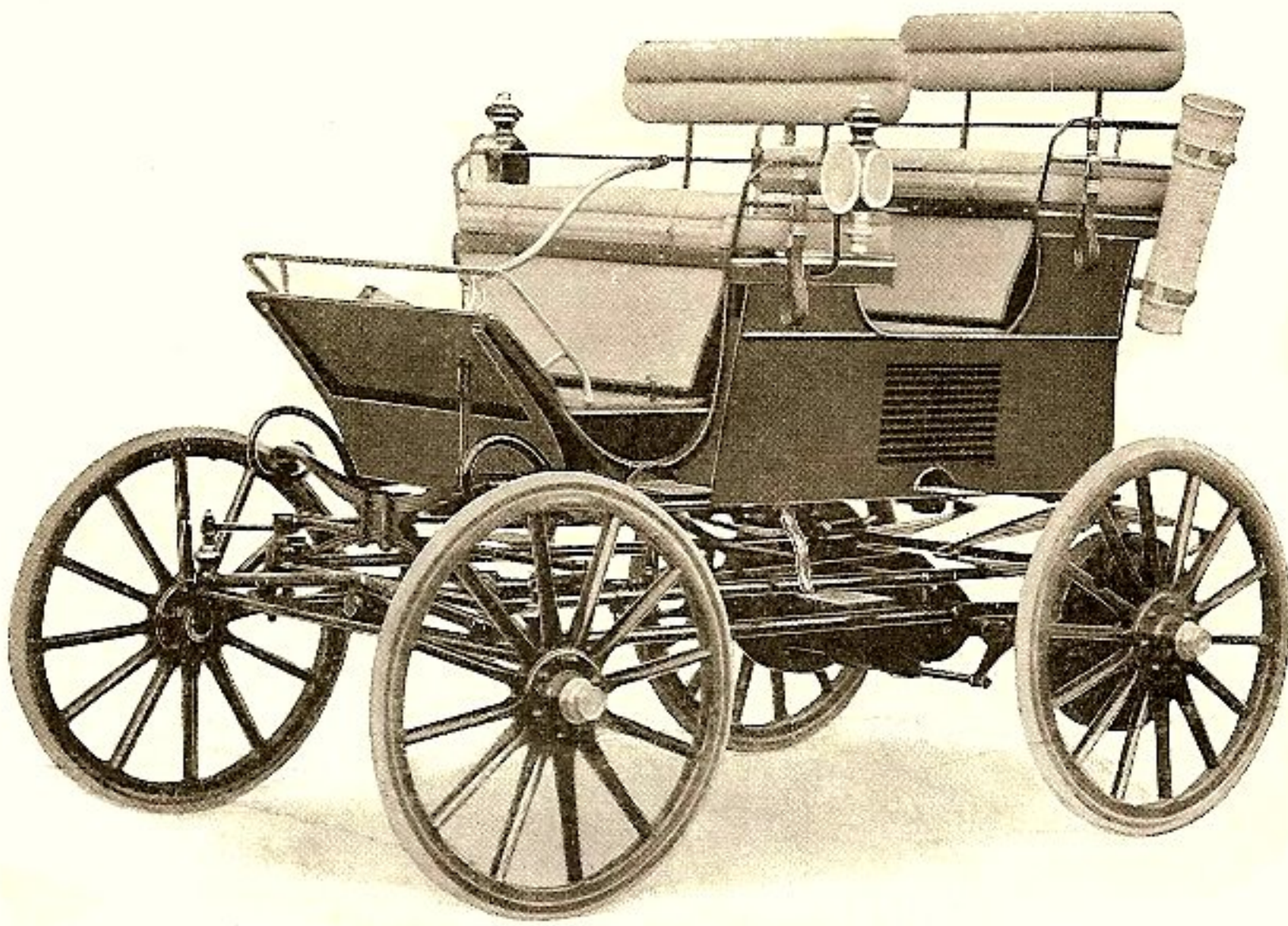
A road wagon similar in all respects to Style G, except that it has close seat and top. Battery, 40 cells. Motor, $1\frac{1}{2}$ H. P. Radius of action, 35 miles. Five speeds forward, varying from 3 to 12 miles per hour. Three speeds backward. Equipped with electric bell, electric light, and combination volt and ammeter.



National Electric Park Trap. Style C. Price \$1,200.

SPECIFICATIONS Style C

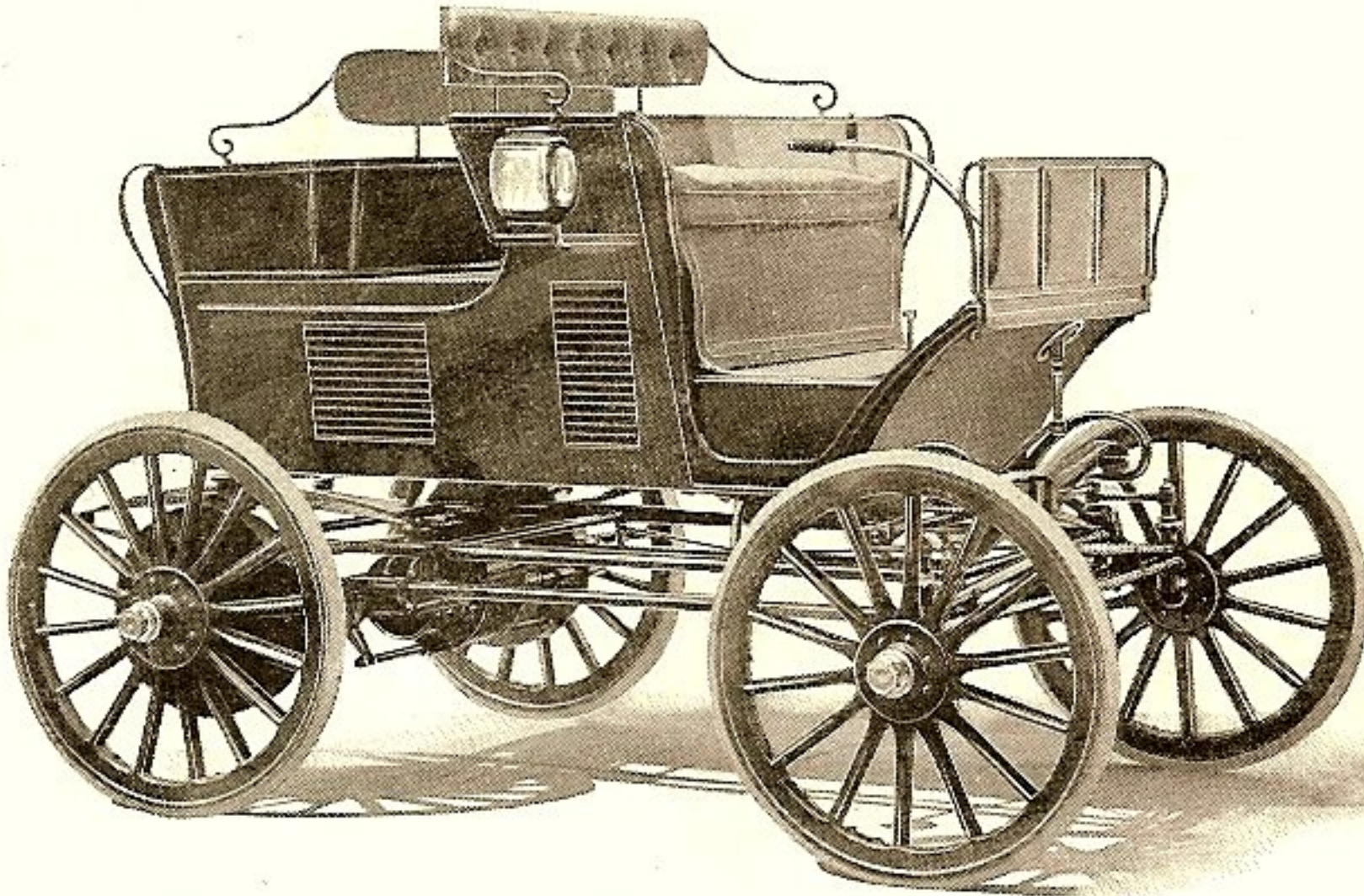
The lightest vehicle in our line capable of carrying four passengers. Battery, 40 cells. Motor, $1\frac{1}{2}$ H. P. Radius of action, 35 miles. Five speeds forward, varying from 3 to 12 miles per hour. Three speeds backward. Equipped with electric bell, electric light, and combination volt and ammeter.



National Electric Break. Style D. Price \$1,600.

SPECIFICATIONS Style D

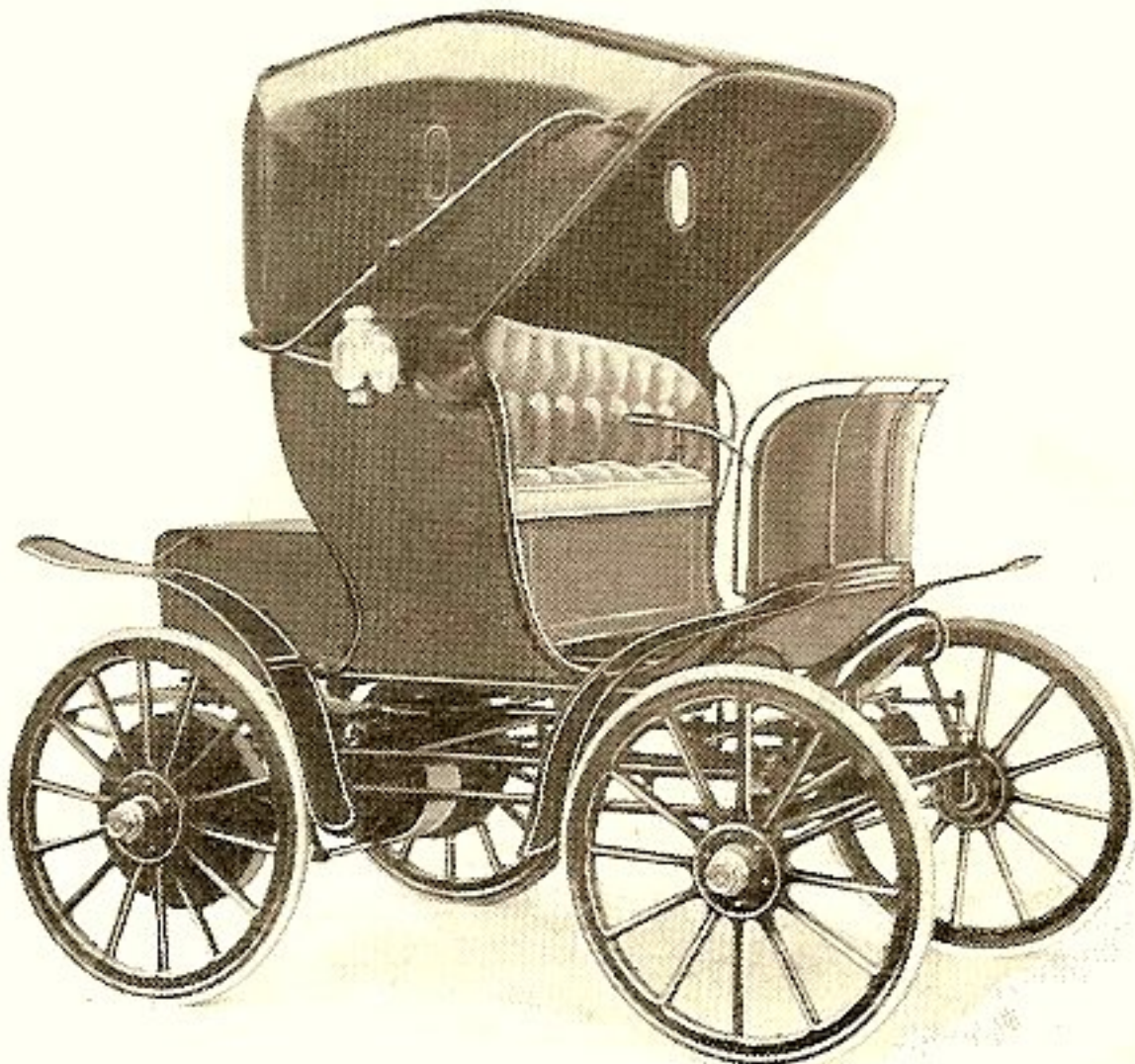
An elegant and stylish four-passenger vehicle of great power and efficiency. Battery, 40 cells. Motor, $2\frac{1}{2}$ H. P. Radius of action, 45 miles. Five speeds forward, varying from 3 to 14 miles per hour. Three speeds backward. Equipped with electric bell, electric light, and combination volt and ammeter.



National Electric New York Trap. Style E. Price, \$1,650.

SPECIFICATIONS Style E

A large, roomy and powerful four-passenger vehicle of the Dos-a-dos type. Battery, 40 cells. Motor, $2\frac{1}{2}$ H. P. Radius of action, 45 miles. Five speeds forward, varying from 3 to 14 miles per hour. Three speeds backward. Equipped with electric bell, electric light, and combination volt and ammeter.



National Electric Stanhope. Style F. Price, \$1,750.

SPECIFICATIONS Style F

Nothing on the market today of similar type compares with this vehicle in elegance of design and finish. Battery, 40 cells. Motor, $2\frac{1}{2}$ H. P. Radius of action, 45 miles. Five speeds forward, varying from 3 to 14 miles per hour. Three speeds backward. Equipped with electric bell, electric lights, and combination volt and ammeter.
