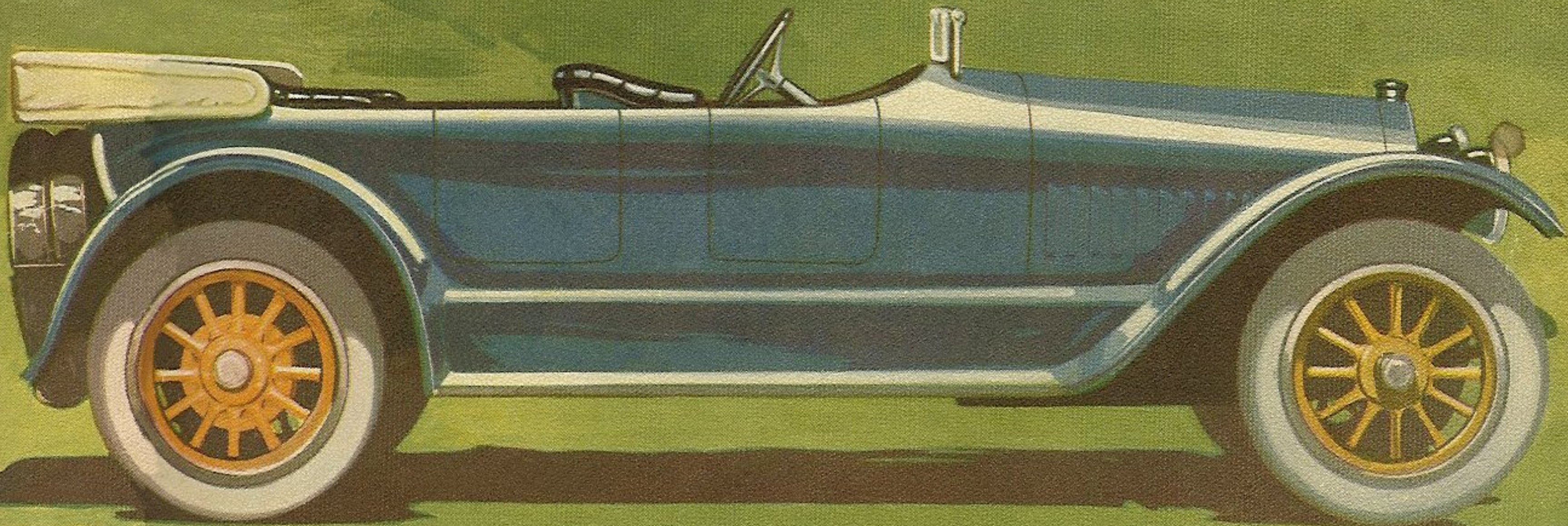


# National

HIGHWAY  
SIX

\$1690



Now Ready



\$1690

GO the limit with your praise of this new Six, and when you have exhausted your powers of description, seat your prospects in this car and see how easily it will put your claims to shame by its actual performance. Your prospects will be so pleased that they will think you were either over-modest or else tongue-tied. They'll ask, "Why didn't you tell us it was so smooth-going, quiet and comfortable."

And all the time you thought *you* could paint a word picture better than any car ever built.

You can't say anything too good about this new "Highway Six." Words can't eulogize this new National more, than to say, "Its Performance is even better than its Photograph." We know what you're thinking—"That the staid, old, conservative National Company has changed its policy and is following the example of many manufacturers by resorting to flagrant exaggerations"—but you're all wrong—

We are just as conservative as ever, if not more so. We have built a successful business for 15 years without making false claims and we don't have to resort to any spasm of adjectives now.

With us it's a matter of cold money-making, plain business sense.

It's a ten to one shot—this new National "Highway Six" at \$1690!

Heretofore only one out of every ten buyers who were in love with the National car could afford to buy one. The others had to reconcile themselves to some second choice.

At that, we were bought out this year many months ago, and could have sold twice our output. This is why we are continuing the successful and powerful \$2375 National Six. It is too big a success and too big a money-maker to drop.

But with the addition of the new "Highway Six," ten will buy where only one could and did, the past season. The reason for this increase is so obvious that dealers are wiring us for options on territory. If *you* don't, you'll wish you had after it's *too late*.

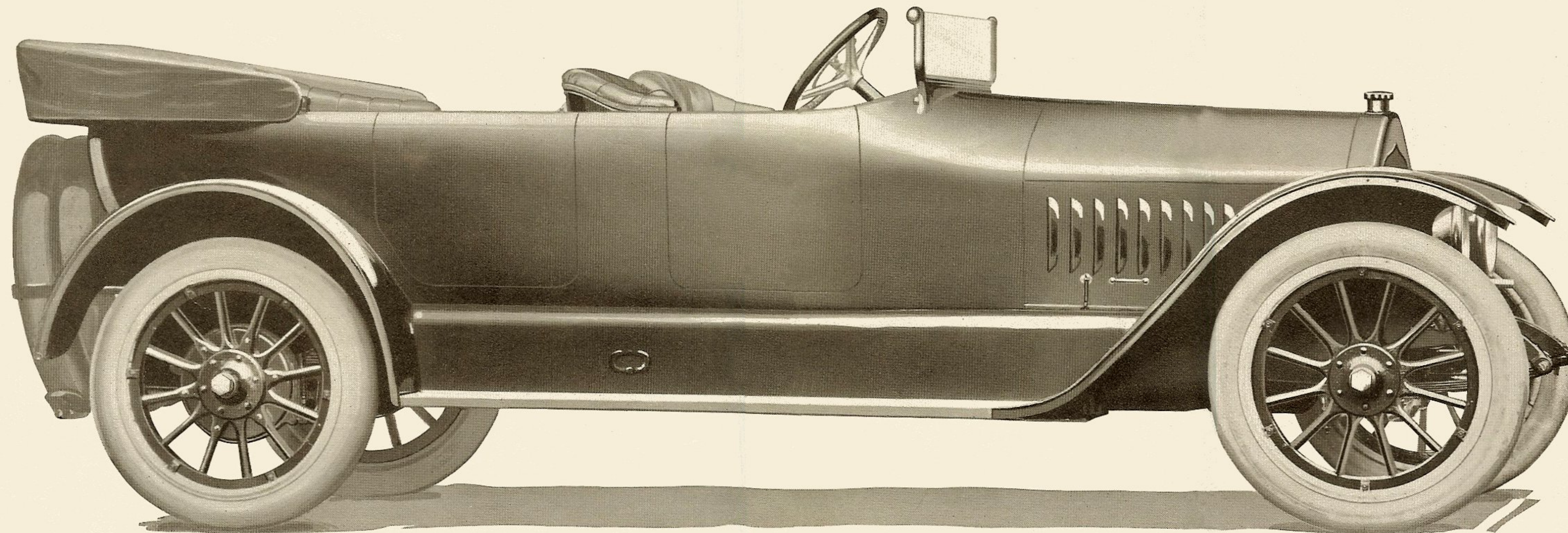
Our capacity is going to be taxed to take care of those who can now afford to buy a National—building them in the way *we build cars*. We won't jeopardize the spotless reputation of National by any hurried or slipshod methods.

We'll build just so many of these cars—only such a number as we know we can build absolutely right. This is a National policy—proven right by fifteen years of successful car building.

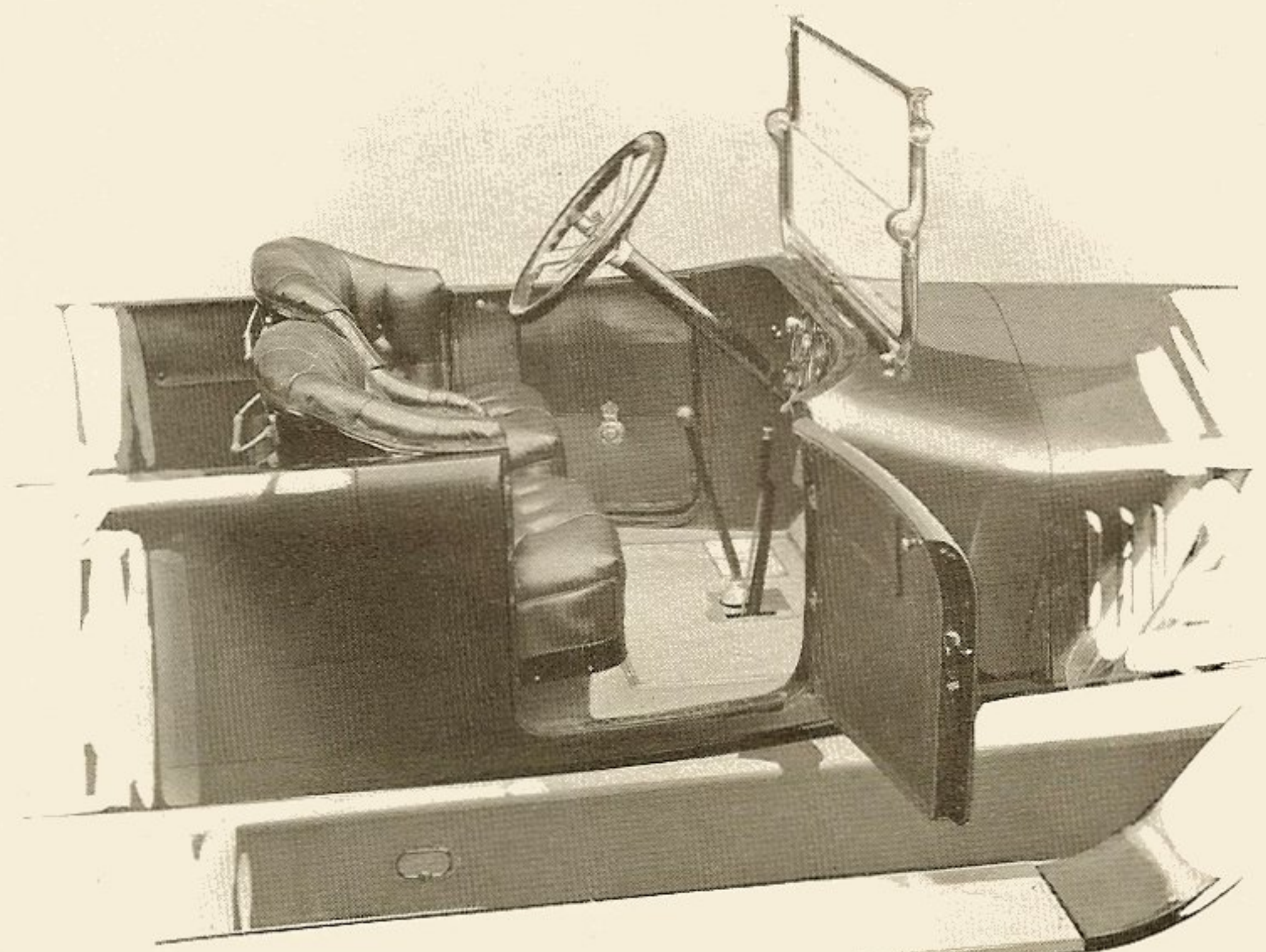
The only question is: "Are *you* going to be one of the fortunate dealers to make money on them?"

Do not risk a delay. Wire for detailed information and dealers' plan.

National Motor Vehicle Co., Indianapolis



## “Highway Six”



THE NATIONAL “HIGHWAY SIX” is the latest achievement of a factory organization that has successfully produced high grade cars for fifteen years. Altho smaller in size than its predecessors, this new National incorporates the same full measure of power, reliability and distinctive style that has characterized all previous Nationals. The car is long, low and roomy. Its stylish appearance reflects quality building.

### SPECIFICATIONS

128-inch Wheel Base

34 x 4½-inch Tires

Six-cylinder 3½ x 5¼-inch Motor, developing 48 horse power without fuss or vibration at a fuel efficiency up to nineteen miles per gallon

High Tension Magneto Ignition

National Cantilever Springs

Full Floating Rear Axle

Westinghouse Electric Starting and Lighting System

17-gallon Gasoline Capacity with Vacuum Feed

Completely equipped for luxurious Touring

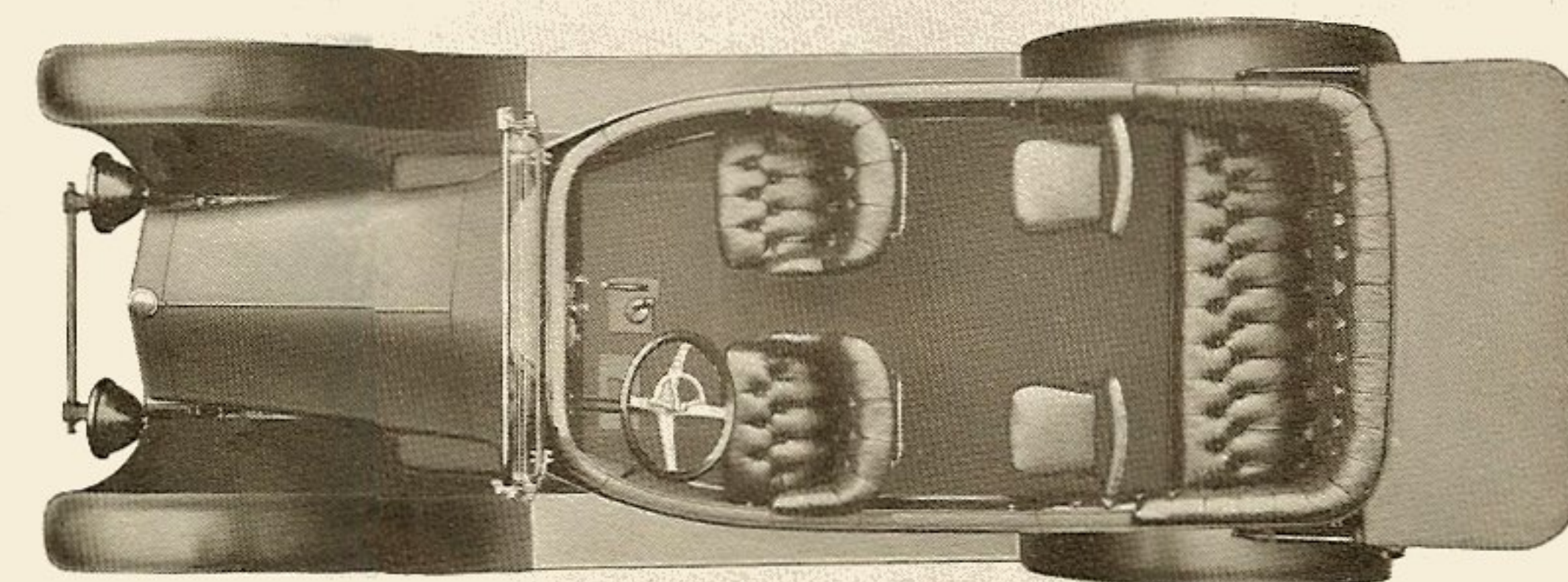
Sides of body are neatly and cleverly molded “round,” eliminating all moldings. The doors are set flush. National aisle-way front seats. Ample room for all passengers. Auxiliary folding seats at an additional charge. Movable driver’s seat adjustable to suit all members of the family.

Special axle design permits unusually narrow turning radius of 33 feet. Light weight, with extra volume of power in proportion to weight of car.

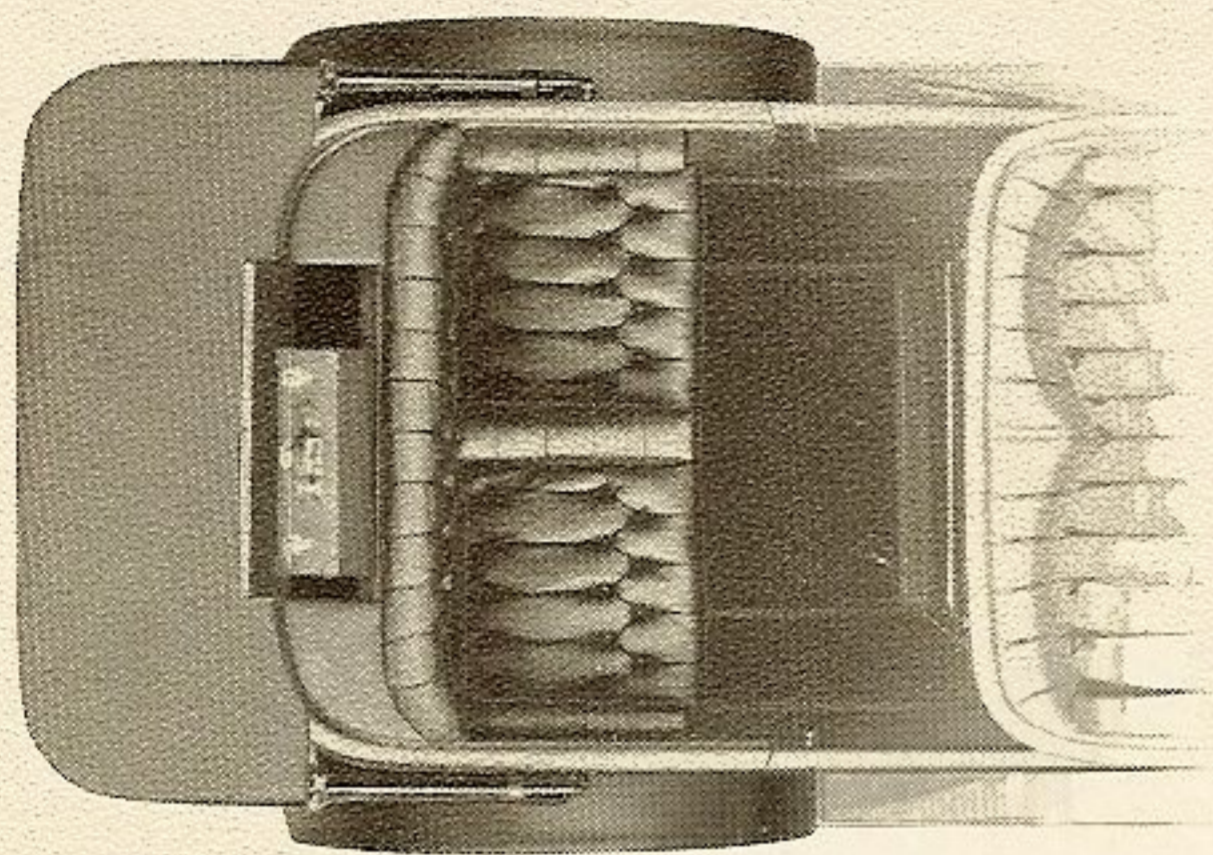
**National Motor Vehicle Co., Indianapolis**

For Fifteen Years Builders of Successful Cars

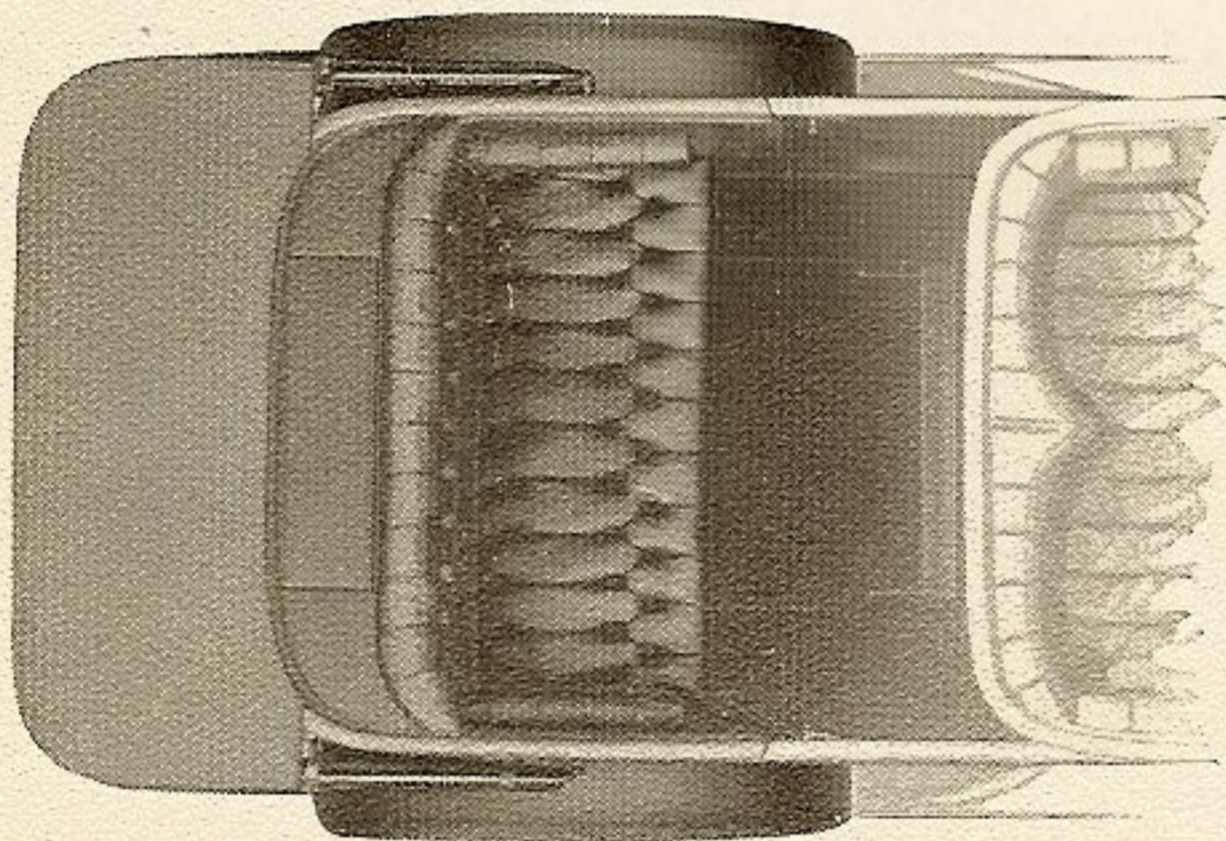
# \$1690



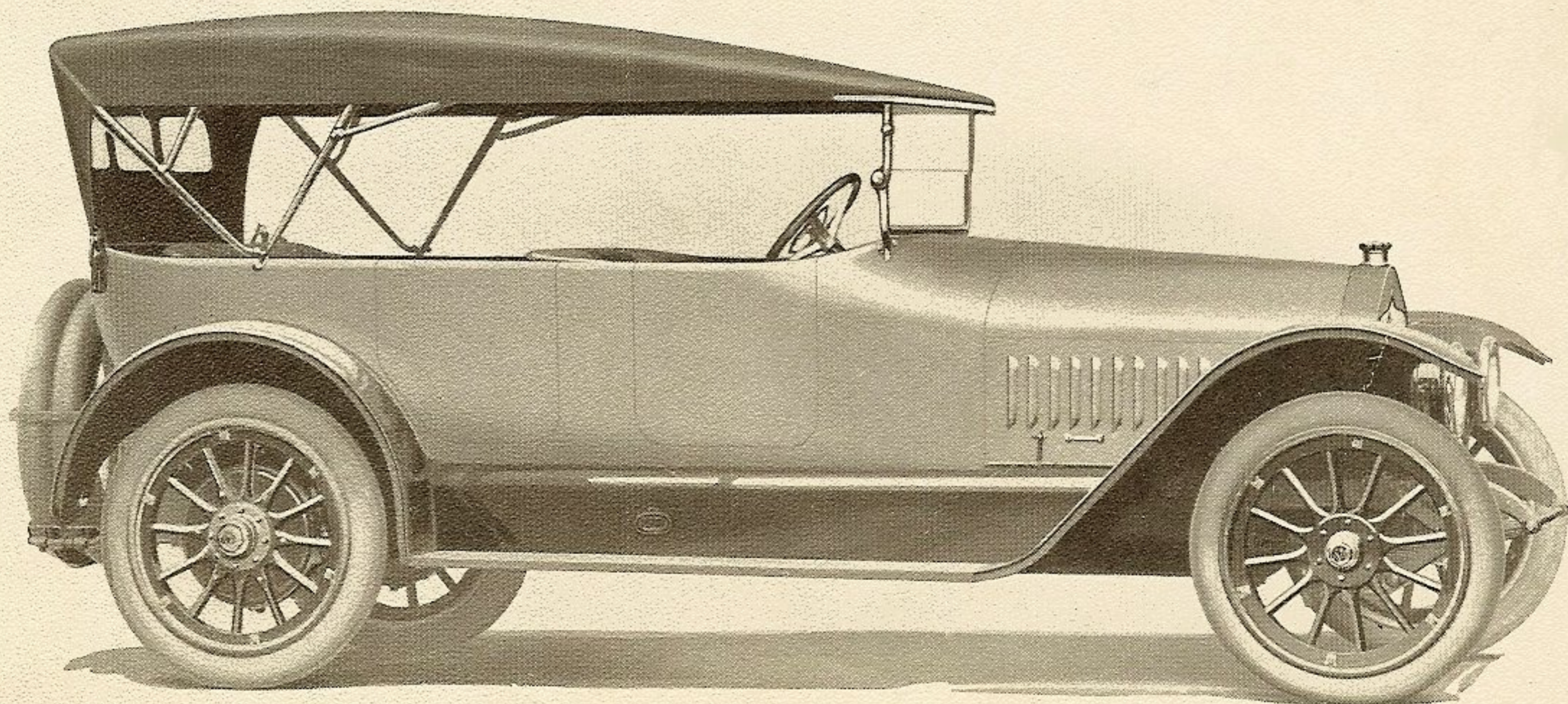
Introducing the  
*Newport Model*  
the latest addition to the successful line of  
*\$2375 Sixes*



*Newport Baggage Compartment is Large  
and Easily Accessible*



*Option of Single Seat in Rear  
Without Extra Charge*



*The National "Newport." One of the Seven Distinctive Body Styles of the Successful \$2375 National Sixes*

LET us set your mind at rest on one big point. The addition of this new "Highway Six" is in fact an *addition to the National line*. The National "Six" models at \$2375 that we have been featuring so successfully during the past season will still be continued. The extremely popular National "Six" touring car with the aisle-way seats, the National roadster, the National parlor car with adjustable arm chairs; in fact, all the popular National models will be featured just as thoroughly this year as they have in the past.

An especially attractive new model in this \$2375 line is the National Newport, here illustrated.

It is the antithesis of anything gaudy, awkward or uncouth. It automatically named itself. The mention of Newport instantly brings visions of all the latest refinement, style and beauty that wealth can secure.

It is the perfection and the latest addition to the National \$2375 Sixes that won an overwhelming sales-victory this season. It is a proven car, that has arrived in the good graces and good standing with the select coteries of the fashionable rich.

The rear seat is located further forward, nearer the center. This gives the passengers in the rear seats the identical riding comforts of the front seats. Veritable arm chairs are obtained by the divided rear seat. The upholstered center arm-rest, when top is raised, reveals a neat glove box. Side arm-rests for both front and rear seats are inside the car. The body is higher, allowing the passengers to ride *in* the car and not *on* it. All mouldings are eliminated and doors are flush with the body. The top edge is cleverly moulded round. Not a single harsh line or angle jars upon the most aesthetic tastes.



*Car Coming!*

*National*

12

\$1990

**National Motor Vehicle Co. Indianapolis**  
**For 15 Years Builders of Successful Cars**