

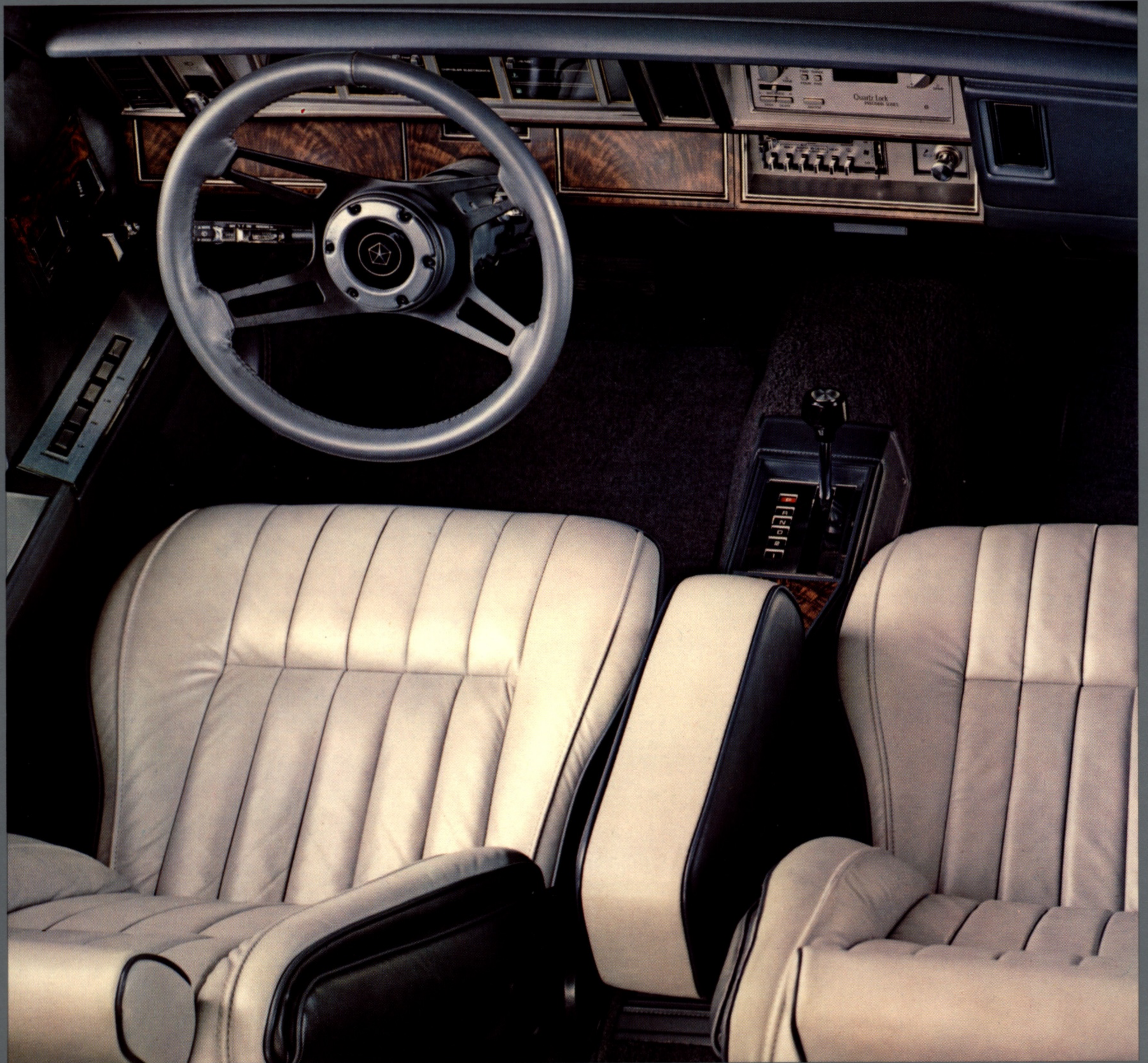
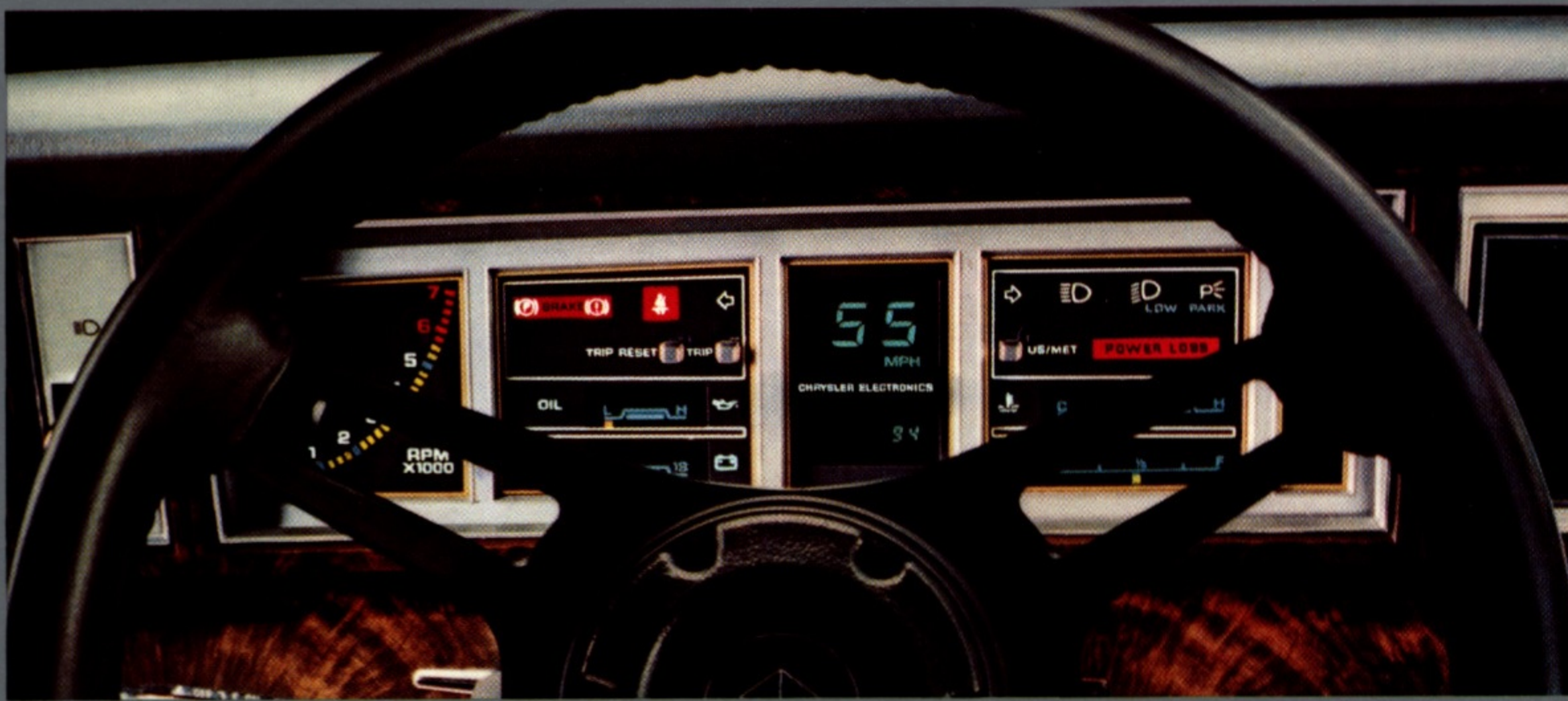
NINETEEN EIGHTY FOUR

DODGE 600

CONVERTIBLE

TURBO
ELECTRONIC FUEL INJECTION
Inside
600 ES TURBO
CONVERTIBLE





600 ES Turbo Convertible standard features: electronic instrument panel (top left), deck lid luggage rack (top right), and Corinthian leather interior (in Silver/Charcoal).



DODGE 600 ES TURBO CONVERTIBLE

DODGE 600 SERIES CONVERTIBLES.

PERFORMANCE WITH A VIEW TO MATCH... IN TWO EXCITING MODELS.

Just three years ago Dodge made automotive history by returning the thrill of open air performance to the American road. Ever since, the Dodge 600 convertible has been an unqualified success.

The 600 convertible's sporty styling, affordability and quality-backed 5/50 limited warranty* have made it a leader in its class. A front-runner that boasts even more performance this year with the addition of a new optional turbocharged engine.

For 1984½, Dodge makes automotive headlines again with the introduction of the exciting new Dodge 600 ES Turbo convertible. A true driver's car, the 600 ES Turbo convertible features a 2.2-liter engine with Chrysler-Bosch multi-point electronic fuel injection and a Garrett AiResearch T3 turbocharger. The powerful 2.2-liter turbo engine is rated at 140 horsepower at 5,200 rpm, and 160 pound-foot of torque at 3,600 rpm.

Handling is high performance too, thanks to a sport/handling suspension that includes larger front and rear sway bars, quicker ratio, firm-feel power steering, gas charged front and rear shocks, and speed-rated

Eagle GT steel-belted P195/60R15 radials.

The 600 ES convertible exterior is bold. Sophisticated. Styled to attract the eye. With blackout Eurosport trim, 15-inch color-keyed cast aluminum wheels, func-

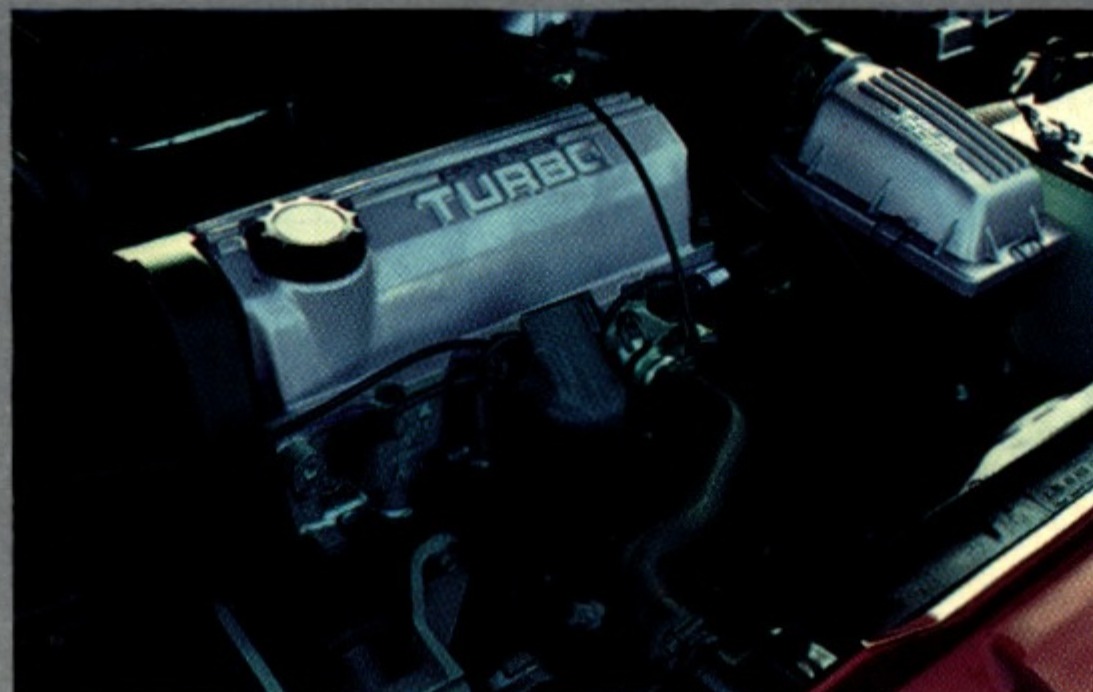
tional hood louvers, and a deck lid luggage rack.

Inside, a high technology electronic instrument panel with analog tachometer, digital speedometer and digital odometer provides moment-to-moment feedback from the road. And luxury

means leather. Real Corinthian leather bucket seats and a leather-wrapped sport steering wheel. Sophisticated and just as smooth as the three-speed automatic TorqueFlite transaxle that's also standard.

The remarkably stylish Dodge 600 ES Turbo convertible. It's not for everyone. Just anyone who's into power, performance and the exhilaration of top-down touring.

*Upon expiration of the normal 12-month/12,000-mile new vehicle limited warranty, limited warranty coverage is extended on power train components, including engine, transmission/transaxle and axle—plus outer panel rust-through protection—to five years/50,000 miles, whichever comes first. A deductible may be required. Fleet and lease vehicles excluded. See your dealer for details.



THE ULTIMATE IN CONVERTIBLE PERFORMANCE

600 ES TURBO CONVERTIBLE STANDARD EQUIPMENT INCLUDES:

Functional

- Electronically fuel injected 2.2-liter turbocharged engine
- Three-speed automatic TorqueFlite transaxle
- Firm-feel fast ratio power steering
- Special sport/handling suspension
- P195/60R15 Eagle GT speed-rated performance radial tires
- Power deck lid release
- Power windows
- Tilt steering column

Interior

- Electronic instrument panel with analog tachometer
- Corinthian leather low-back bucket seats
- Premium AM/FM stereo radio with integral digital clock
- Leather-wrapped sport steering wheel with tilt feature
- Intermittent windshield wipers
- Trunk dress-up
- Accessory front floor mats

Exterior

- Deck lid luggage rack
- 15-inch color-keyed cast aluminum Shelby road wheels
- Turbo hood cooling louvers
- Bodyside tape stripe
- Blackout treatment of door handles, door keylock cylinders, dual remote mirrors, rub strips, windshield molding, and side marker light bezels
- Black narrow bodyside molding
- Turbo identification on front fenders
- ES identification on deck lid

Price — MSRP: \$12,895†

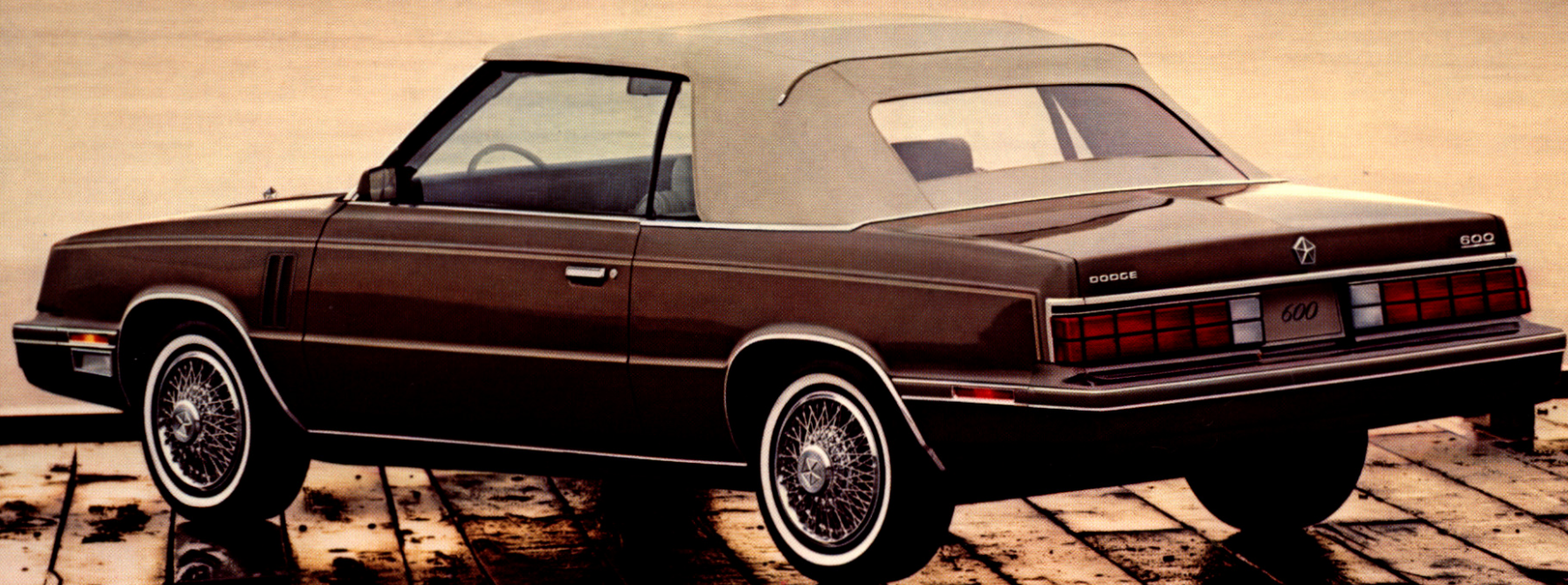
†Manufacturer's Suggested Retail Price excludes taxes, destination charges, and optional equipment. The Manufacturer's Suggested Retail Price shown is as of January 1, 1984. This price is subject to change.

All product illustrations and specifications are based on authorized information. Although descriptions are believed correct at publication approval, accuracy cannot be guaranteed. Chrysler Corporation reserves the right to make changes from time to time, without notice or obligation, in prices, specifications, colors and materials, and to change or discontinue models. See your dealer for the latest information.

Some of the equipment shown or described throughout this catalog is available at extra cost.



*An
American
Revolution*





An
American
Revolution

NINETEEN EIGHTY FOUR

DODGE 600

CONVERTIBLE

TURBO
ELECTRONIC FUEL INJECTION
Inside
600 ES TURBO
CONVERTIBLE

