

NINETEEN EIGHTY FOUR

DODGE

600 SERIES



DODGE 600 SERIES.

DODGE MAKES HIGH TECHNOLOGY AFFORDABLE.

Efficiency. Comfort. Affordability. And class.

Qualities inherent in the sophistication of the Dodge 600 four-door sedan. The performance of the 600 ES. The sporty elegance of the club coupe. And the classic styling of the 600 convertible.

Qualities that mean meticulous attention to every detail. Precise fit and finish throughout. And high technology harnessed into an affordable package without sacrificing personal driving pleasure.

The Dodge 600 series. Four uncommon cars with some revolutionary things in common.

Dodge 600 ES, shown in Beige Crystal Coat.



THE ULTIMATE DRIVING EXPERIENCE.

It's not just a family car. It's *the* family car. The Dodge ultimate in affordable family transportation. The Dodge ultimate in balanced performance.

The 600 sedan is powered by

a standard 2.2-liter engine—one of the most successful in the automotive industry. And this year the 2.2 is enhanced by electronic fuel injection. Rated at an outstanding [25] EPA EST MPG* 35 estimated highway, with

three-speed automatic trans-axle, this is an engine with a thirst for fun. Not fuel.

There's also a new optional 2.2-liter turbocharged engine with electronic fuel injection that

produces 142 hp at 5,600 rpm.

Plus smart styling and a smooth, comfortable ride for six.

Who said family cars had to be dull? Not Dodge. And the 600 four-door sedan proves our point. Whether it's a vacation, a

ride in the country, or an around town errand, the advanced technology of the 600 can handle it.

Dodge 600 four-door sedan, shown in Garnet Red Pearl Coat.

*Use EPA EST MPG numbers for comparison. Your mileage may differ depending upon speed, weather, and trip length. Actual highway mileage will probably be lower than highway estimate. California: [24] EPA EST MPG; 33 estimated highway.

FUN TO DRIVE, EASY TO OWN. The Dodge 600 convertible and Club Coupe. As handsome as they are high tech.

Precision engineered to perform, these stylish cars are sporty, yet luxurious enough to go absolutely anywhere. They're fun. They're unique.

And they're built to exacting standards. Which makes them exactly right for the American road.

Dodge 600 convertible in Garnet Red Pearl Coat, and Dodge 600 Club Coupe in Charcoal Crystal Coat.

About this catalog. We have tried to make this catalog as complete as possible. And we hope you find it useful. However, since the time of printing, some of the information you'll find here may have been updated. Your dealer has details, and you should ask him for current information before ordering.

Some of the equipment shown or described throughout this catalog is available at extra cost.



**AN INTERIOR THAT TAKES CARE OF
YOU AND YOUR PASSENGERS.**

Tired of apologizing to your passengers for your car's lack of comfort? Consider the Dodge 600 four-door sedan. A spacious "living room" of a car. With a comfortable and relaxed driving atmosphere for six.

A high-quality standard Kimberley cloth-and-vinyl bench seat with fold-down center armrest and adjustable head restraints is easy to appreciate. After all, it's padded and contoured

especially for you. There's also an optional vinyl bench seat with center armrest, or cloth-and-vinyl 50/50 seats with dual arm-

rests and recliners.

Also for 1984, all 600 models feature a standard electronically tuned AM radio* with integral digital clock. And a new optional Illuminated Entry System adds to your convenience

and security.

What's more, for 1984 Dodge has increased the front seat travel on the 600 to a better than comfortable 7.5 inches.

Go ahead. Take hold of the new standard luxury steering wheel.

Dodge 600 four-door sedan

standard interior, in Red cloth-and-vinyl.

**Factory-installed radio may be deleted for credit.*



DODGE 600 ES.
A STUDY IN DISTINCTIVE STYLING.

The Dodge 600 ES is a "Euro-Sport" touring car that offers style, performance, responsive handling, and plenty of passenger space.

The Dodge 600 ES features a standard Sport Handling Suspension Package that includes gas-filled shocks and a power steering gear with quicker ratio. Both help the ES handle every curve that comes your way.

For 1984 there's a standard electronic instrument cluster that includes a distinctive digital tachometer, and a self diagnostic feature.

Also for 1984, a new 2.2-liter electronic fuel-injected engine is now standard. And a new 2.2-liter turbocharged engine with multi-point electronic fuel injection and liquid cooled bearings is optional. Add a floor-mounted five-speed manual or optional three-speed automatic, and either way you're ahead.

Outside, the 600 ES features a blackout treatment that includes black moldings, black dual power remote control mirrors, and black body-side stripes. Performance-oriented



steel-belted radial Goodyear Eagle GT tires and sporty aluminum road wheels also add to its bold appeal.

Inside, you'll find cloth-and-vinyl high-back bucket seats with integral head restraints and

reclining seatbacks. The Dodge 600 ES interior is shown here in Beige/Brown cloth-and-vinyl bucket seats. A luxury steering wheel and center console with freestanding center armrest are also standard.

Quality engineering and design are the backbone of the Dodge 600 ES, so we begin with computers that analyze all materials and components to make sure they meet Chrysler's exacting standards. These aerodynamically efficient cars are then assembled with the aid of computer-controlled automated welders to ensure uniform quality.

Five-Year/50,000-Mile Limited Warranty

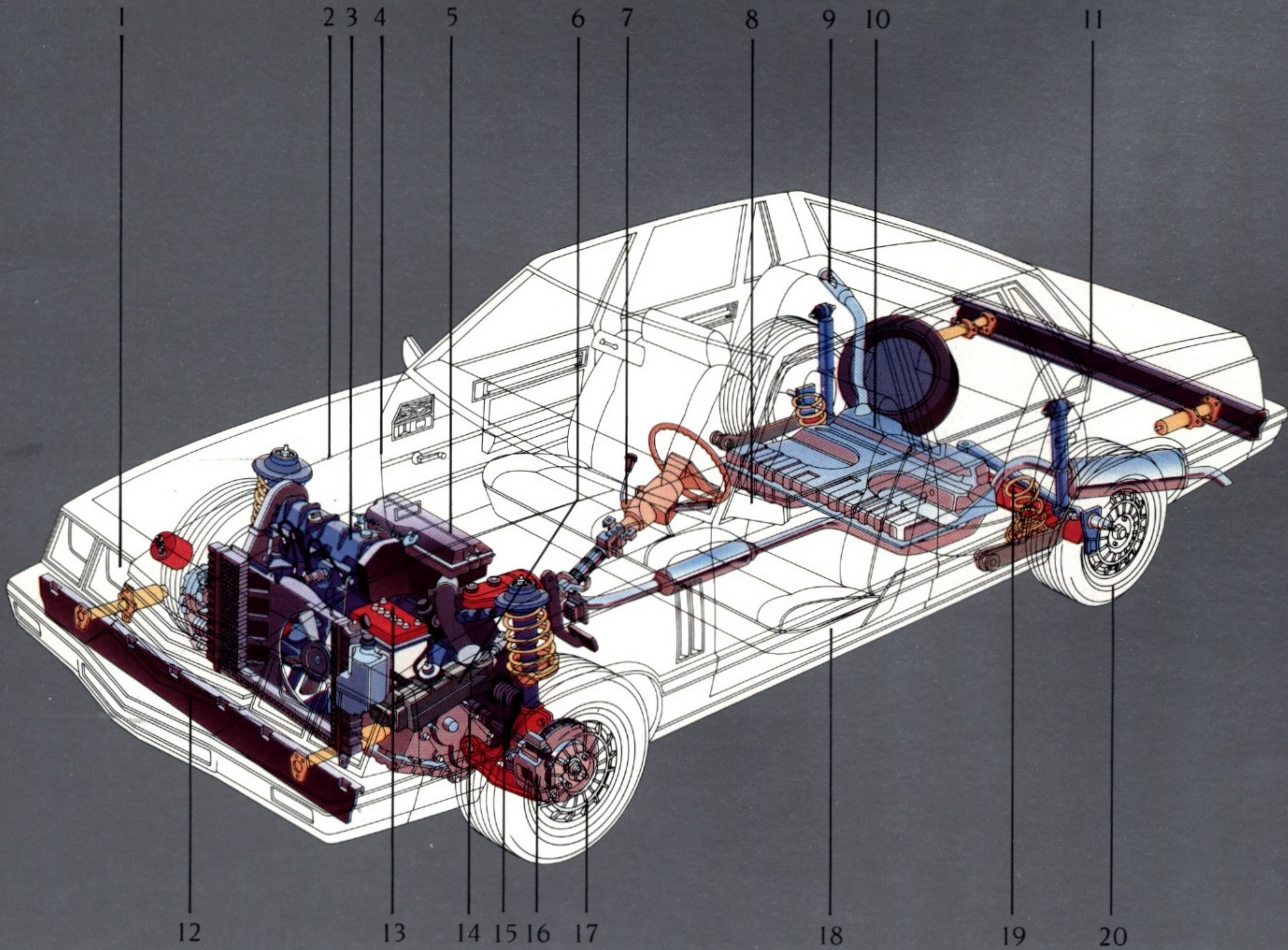
Chrysler Corporation feels so confident about the quality and performance of all Dodge models that upon expiration of the normal 12-month/12,000-

mile new vehicle limited warranty, limited warranty coverage is extended on power train components, including engine, transmission/transaxle and axle—plus outer panel rust-through protection—to five years/50,000 miles, whichever comes first. A deductible may be required. Fleet and lease vehicles excluded. See your dealer for details.

Using quality components such as pre-coated steel in critical areas, and galvanized sheet metal, Dodge helps ensure a lasting relationship between you and your 600 ES. A seven-step dip-and-spray process contributes even more to its lasting quality. Dodge 600 ES shown at left in Beige Crystal Coat. Shown on page 9 in Radiant Silver Crystal Coat.

PERFORMANCE ENGINEERED.

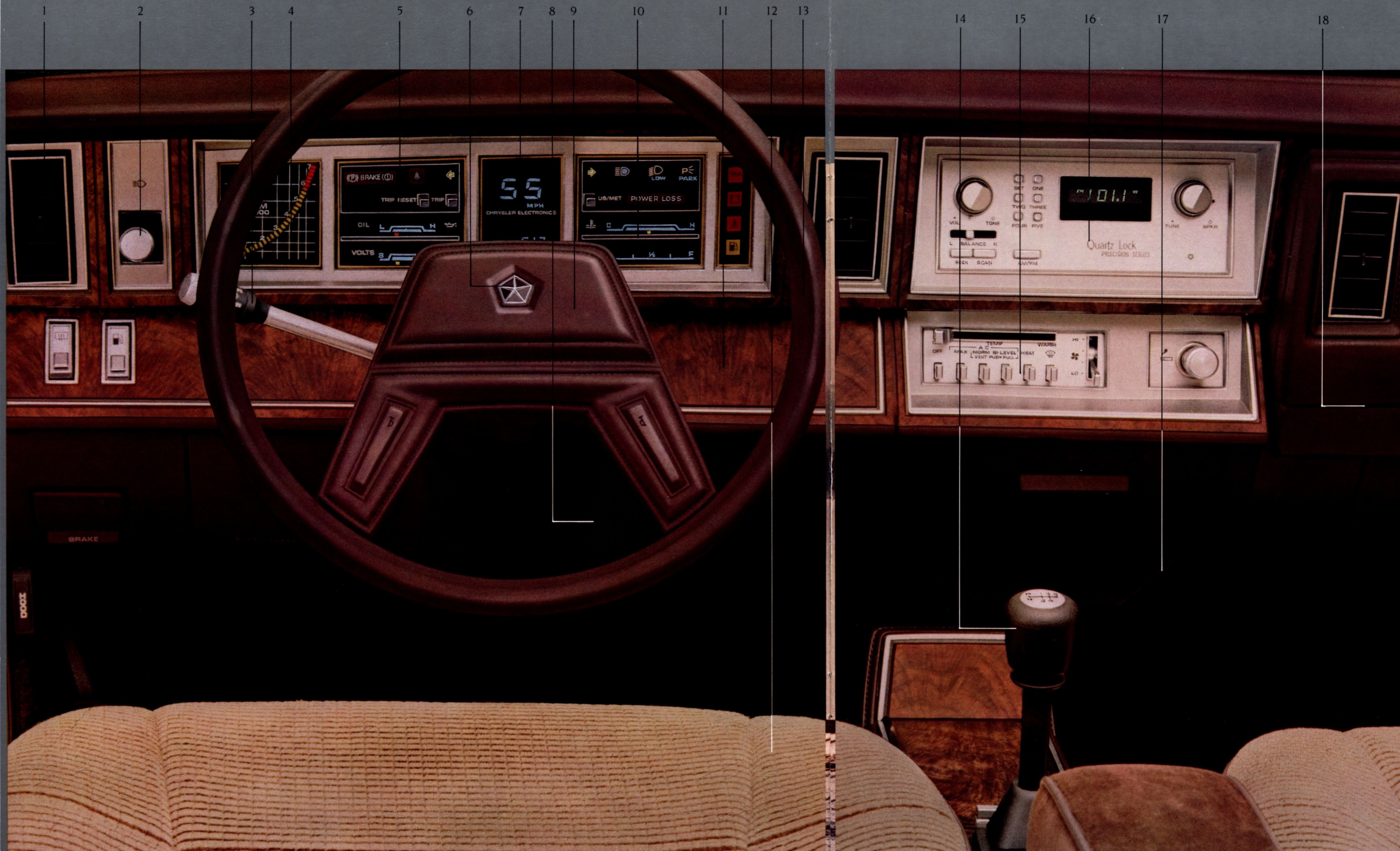
1. Halogen beam headlamps
2. Hood pad and special body sound insulation
3. Chrysler-built 2.2-liter Trans-4 EFI overhead cam engine
4. Power deck lid release
5. Electronic fuel injection
6. Five-speed manual trans-axle with integrated over-drive fourth gear and floor shifter
7. Firm-Feel power rack-and-pinion steering
8. Dual power remote control outside mirrors
9. Power release fuel filler door
10. New 14-gallon fuel tank



11. 17-cubic-foot trunk capacity
12. Energy-absorbing bumper system
13. Maintenance-free battery
14. Front-wheel drive
15. Iso-Strut front suspension with antisway bar
16. Power brakes (front disc, rear drum)
17. Cast aluminum road wheels
18. Corrosion protection—extensive use of galvanized steel, and lower body protective urethane coating
19. Sport handling suspension
20. P185/70R14 steel-belted performance radial ply tires with raised black letters



**THE DODGE 600 ES. SPACE AGE
TECHNOLOGY AND CONTROL.**



Designed with meticulous attention to detail, the 600 ES interior is a study in form and function. Listed below are some of the Dodge 600 ES comfort and convenience features that help tailor the ES environment to the needs of its driver:

Dodge 600 ES electronic instrument panel shown at left in Beige.

1. Optional air conditioning outlets
2. Halogen headlamp switch
3. Multifunction control lever for turn signals, headlamp high/low beams, wiper/washer system, optical horn
4. Electronic tachometer
5. Electronic oil and volt indicators
6. Dual-note horn
7. Electronic speedometer and odometer
8. Power brakes
9. Luxury steering wheel
10. Electronic temperature and fuel indicators
11. Dark woodtone instrument panel accents
12. Cloth-and-vinyl high-back bucket seats with integral head restraints and reclining seatbacks
13. Power steering
14. Console, with five-speed manual transaxle shift lever and storage compartment
15. Heater/defroster/optional air conditioning controls
16. Optional electronically tuned AM/FM stereo radio with integral digital clock
17. Cut pile carpeting
18. Lockable glove box compartment, with standard power deck lid release.

**DODGE 600 CLUB COUPE.
IMAGINE WHAT IT'S LIKE TO OWN IT ALL.**

This sleek, sporty car has it all. Style. Efficiency. Sophistication.

It's a rare combination of crisp, contemporary lines and advanced front-wheel drive technology. A unique car with classic padded formal landau roof and

classic silhouette... designed to appeal to a unique driver.

From the moment you take control of your Dodge 600 Club Coupe, you'll feel its singular personality, offering the sportiness and intimacy of a personal car and the roominess

of a sedan.

Experience the comfort of standard high-back cloth bucket seats with reclining seatbacks and integral head restraints. Wrap your hands around the new luxury steering wheel. Here's

the individuality of a coupe with the capability of comfortably seating up to six.

Let the 600 Club Coupe's efficient 2.2-liter Trans-4 engine and manual five-speed trans-axle take charge. This combination delivers mileage ratings

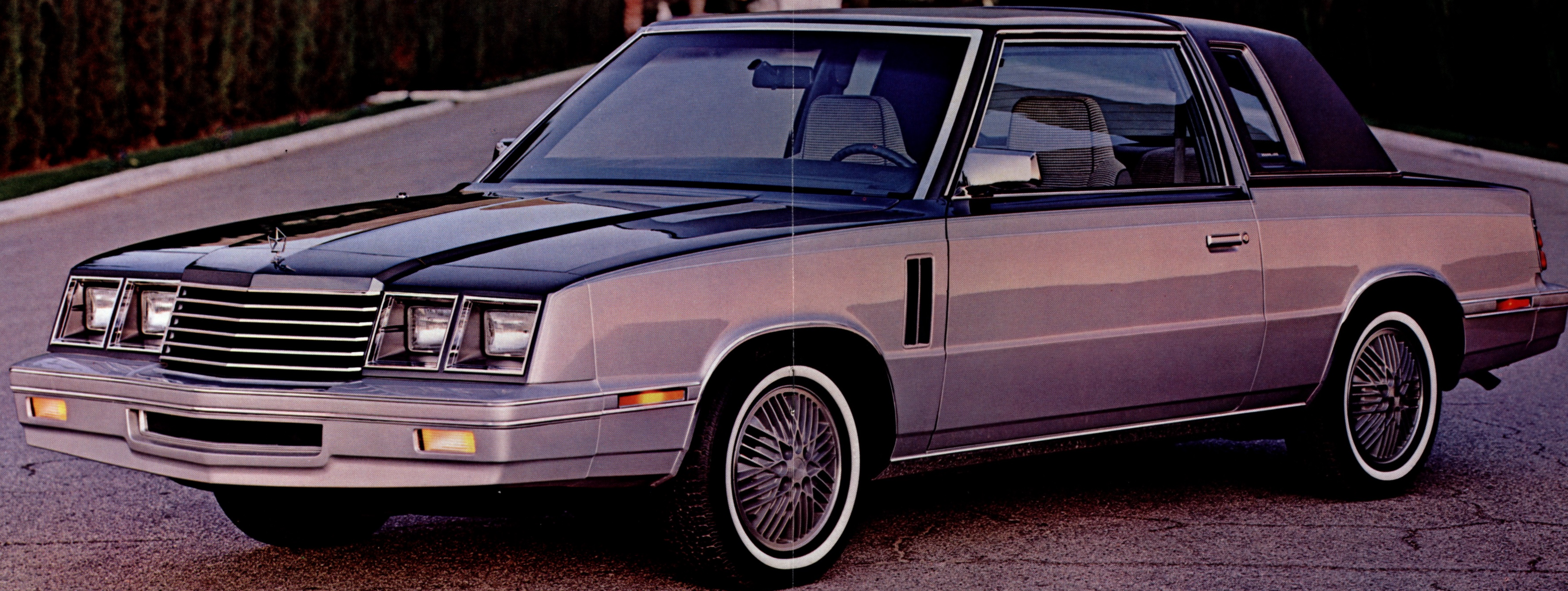
of [27] EPA EST MPG; 41 estimated highway*.

What's more, for 1984 there's a new optional 2.2-liter turbo-charged engine with optional automatic transaxle. Available to anyone who's really into

response.

Dodge 600 Club Coupe in extra-cost Gunmetal Blue Pearl Coat/Radiant Silver Crystal Coat two-tone with Gunmetal landau roof.

**Use EPA EST MPG numbers for comparison. Your mileage may differ depending upon speed, weather, and trip length. Actual highway mileage will probably be lower than highway estimate. California: [27] EPA EST MPG; 43 estimated highway.*



**DODGE 600 CONVERTIBLE.
UNCOVER A THING OF BEAUTY.**

Just one look. That's all it takes for the classy styling of America's lowest priced convertible to get under your skin. And into your heart.

It all started three years ago when Dodge brought back the American convertible to the

American road. And with it, brought back the pure fun of driving.

For 1984, the Dodge 600 convertible's special brand of driving excitement begins with a redesigned roofline that

features new power quarter windows and a tinted glass rear window.

For added comfort on the open road, the 600 convertible also offers a larger rear seat for 1984. Distinctive new wrap-around taillamps provide a handsome new rear appear-

ance, while Chrysler Corporation's unique 5/50 Protection Plan backs the convertible's quality construction. Designed to be a personal driving experience as well as just enjoyable, the 600 convertible is a rugged romantic.

Advanced front-wheel drive technology helps it hug the

road. Rack-and-pinion steering steadies the course. And power front disc brakes help ensure dependable stops.

It's a very special car that has brought new meaning to the words "fun to drive." Dodge 600 convertible is a spirited

performer that turns driving into an exhilarating experience every time you take to the road.

Dodge 600 convertible shown below in Black with Red vinyl reclining bucket seats, and the Dodge 600 convertible in Mink Brown Pearl Coat with Beige convertible top.



**DODGE 600 CONVERTIBLE:
ADVANCED TECHNOLOGY TOPS IT ALL OFF.**



Dodge 600 convertible interior, with Red all-vinyl reclining bucket seats.

The Dodge 600 convertible is covered with quality. A tough, newly designed vinyl-coated convertible top is standard. And new power quarter windows help enhance the convertible's already stylish



top-up appearance.

The convertible top is easily raised or lowered electrically, and a color-keyed vinyl boot shields the top when it is in the down position.

Inside, the Dodge 600 con-

vertible is long on luxury. Vinyl low-back bucket seats with dual recliners, adjustable head restraints and center console are standard. A new luxury steering wheel accents an already elegant interior, while a handsome instrument panel (shown below) features a standard visual message center. Dual remote-controlled color-keyed exterior mirrors are also standard. And all Dodge 600 radios include an integral digital clock.

Feel like stretching out? Go ahead. For 1984, the 600 convertible features a larger rear seat to help keep your passengers comfortable. And speaking of comfort, increased front seat travel for '84 is another 600 convertible advantage.

The Dodge 600 convertible is a good traveler, with 10.5 cubic feet of space in the trunk. What's more, this year a new 14-gallon fuel tank lets you drive even farther between fill-ups. Among other improve-



ments for 1984 are new standard 14-inch luxury wheel covers and a new optional Illuminated Entry System. A standard 2.2-liter four-cylinder overhead cam engine supplies plenty of power for the 600 convertible. This rugged

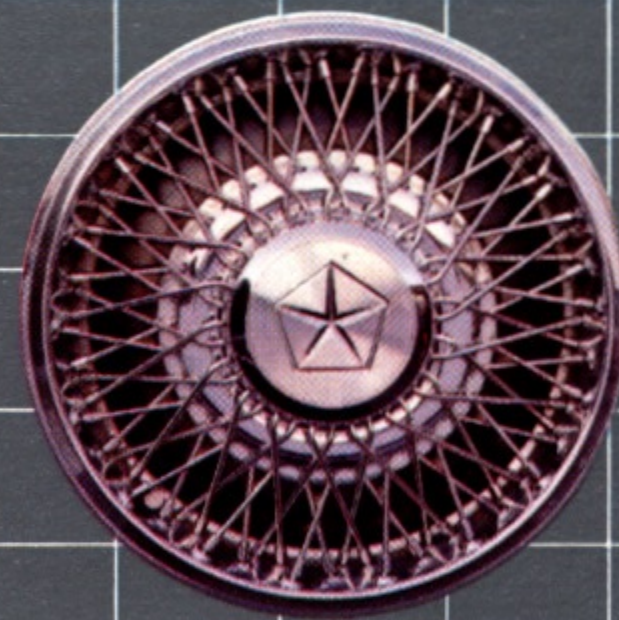
engine features long-life components such as chrome valve stems, alloy metal valve seats, and moly-faced compression rings. Fuel efficiency and performance are maximized with an electronic combustion computer feedback carburetor system. And for real driving excitement, 1984 marks the introduction of a new optional 2.2-liter turbocharged engine.

The Dodge 600 convertible is quality built. In addition to the traction and directional stability of front-wheel drive, a refined Iso-Strut front suspension helps provide a firm, comfortable ride, and standard manual rack-and-pinion steering helps make the 600 convertible easy to drive.

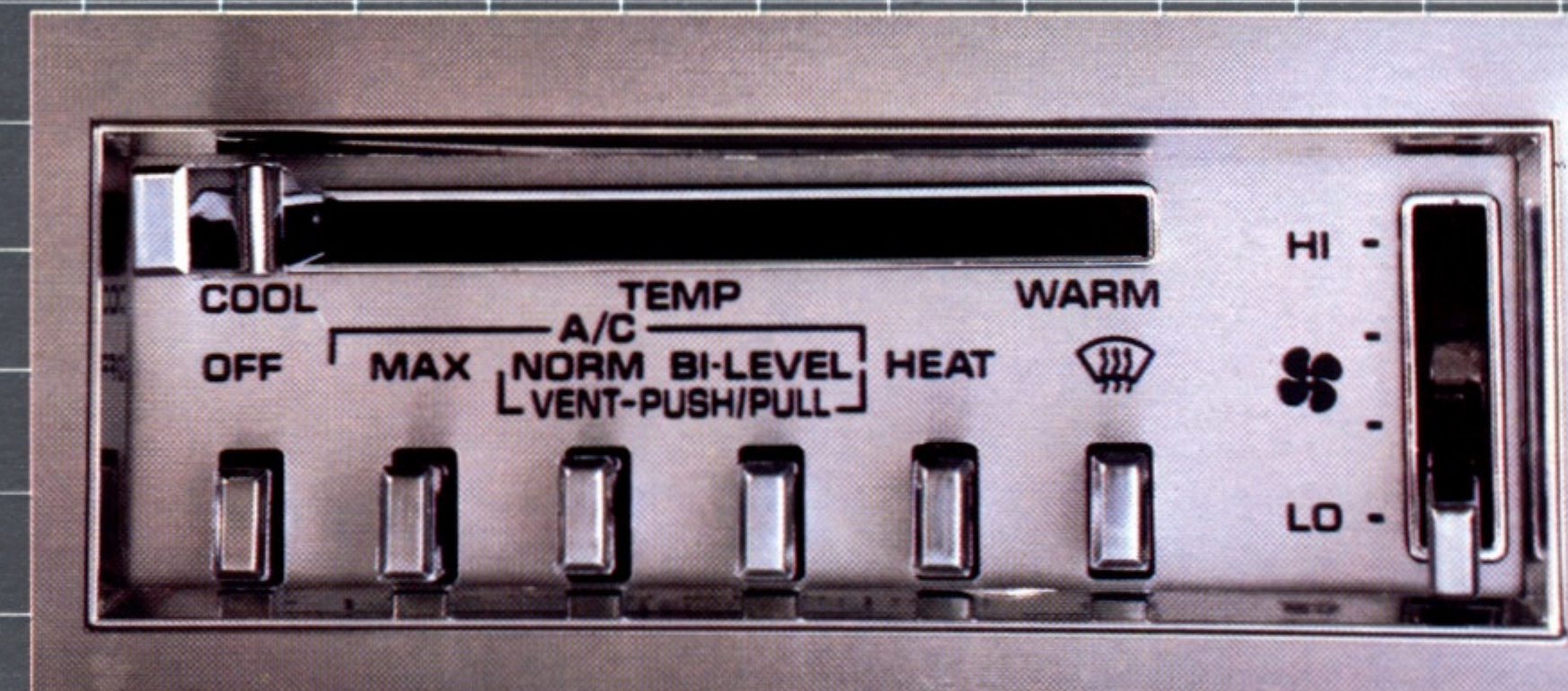
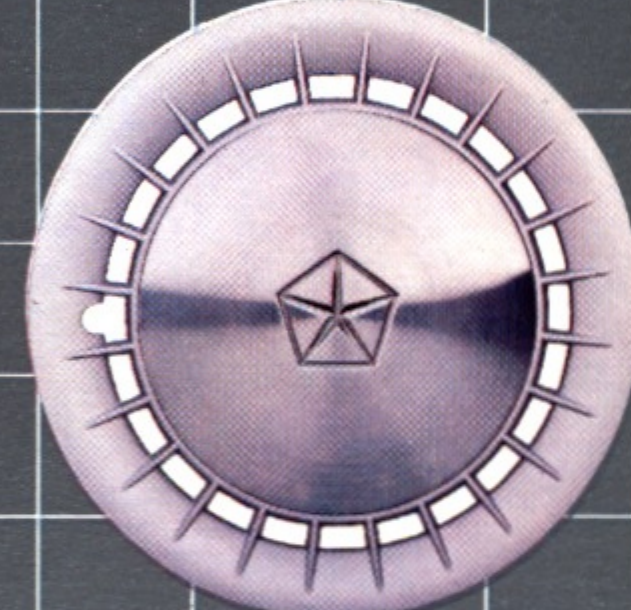
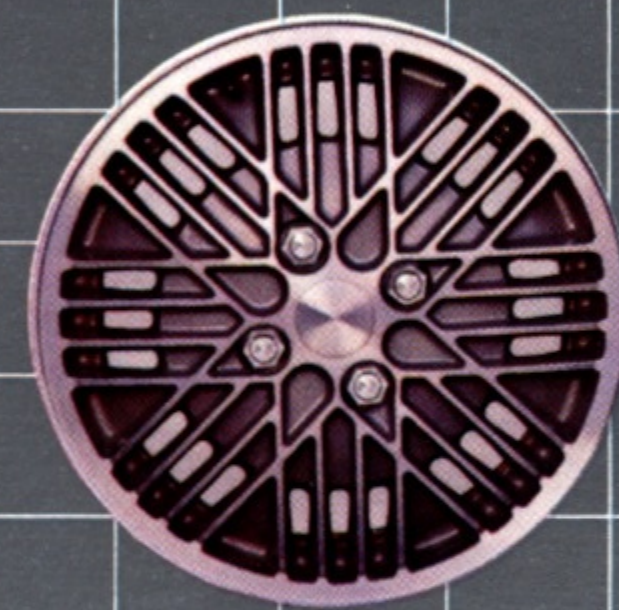
Power brakes are standard as is an automatic three-speed TorqueFlite transaxle.

The Dodge 600 convertible. We think it's as fine an example of advanced design and engineering coupled with good looks, comfort, and just plain class as you'll find.

**DODGE 600 SERIES OPTIONS.
AND YOU THOUGHT IT COULDN'T
GET ANY BETTER.**



Available Wheel Covers and Wheels. Dress up your 600 with stylish 14-inch wire wheel covers, available on all 600 models (except 600 ES). Fourteen-inch cast aluminum wheels (set of four) are standard on the Dodge 600 ES, and 14-inch luxury wheel covers are standard on the 600 sedan, club coupe and convertible.



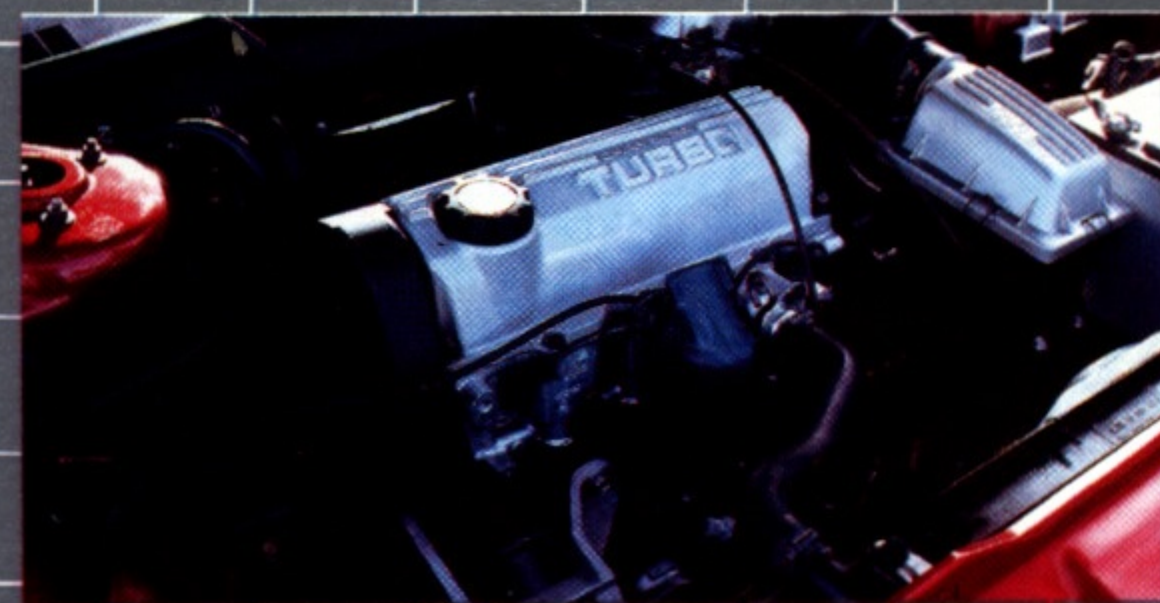
Air Conditioning with Bi-Level Ventilation. The easy way to keep your cool. Special bi-level ventilation improves the flow of cool, clean air throughout your

car's interior. More even temperatures help keep you comfortable. Also a perfect way to beat the heat while catching some sun in your convertible.



Tilt Steering Column. Six positions provide maximum comfort for all drivers. (Deluxe intermittent windshield wipers—standard on 600 ES—required.)

2.2-Liter Turbocharged Engine with Multi-Point Electronic Fuel Injection. If you fancy yourself in the fast lane, this hot new turbocharged engine is for you. Electronically fuel injected, it's designed to respond. An in-tank electric fuel pump delivers fuel to the regulator while a turbocharged boost pressure of 7.2 psi helps this engine produce 142 hp at 5,600 rpm and 160 ft.-lb torque at 3,200 rpm.



Electronically Tuned AM/FM Stereo Radio with New Integral Digital Clock and Cassette Tape Player. Sensational sound for any Dodge 600. Solid state tuning eliminates fade and drift, while a memory system stores up to ten stations at a time in both AM and FM modes. Fluorescent digital station display makes finding your favorite stations a snap. And for 1984 there's a new integral digital clock. This exciting sound system is available with or without the cassette tape player with Dolby® sound. A great way to enhance your driving pleasure.

*Dolby is a trademark of Dolby Laboratories.



Power Remote Outside Mirrors. Dual electric power controlled bright chrome exterior mirrors adjust easily from the inside. (Not available on convertible. Power-controlled black mirrors are standard on Dodge 600 ES.)

Automatic Speed Control. Set your speed and settle back. Highway driving is a breeze, and this option will also help you save gas on long drives. The control is conveniently mounted on the standard steering column multi-function control lever. (Deluxe intermittent windshield wipers—standard on 600 ES—required.)



Leather-Wrapped Steering Wheel. A luxury you deserve. This attractive wheel adds comfort while it enhances any interior.

Illuminated Right Visor Vanity Mirror. A handy way to make a quick check on your appearance. Day or night. (Not available on 600 convertible.)



STANDARD FEATURES

Dodge 600 ES Four-Door				
Dodge 600 Four-Door				
Dodge 600 Convertible				
Dodge 600 Club Coupe				
Alternator—60-amp	S	S	NA	NA
Alternator—90-amp (included with optional 2.2-liter turbocharged engine)	E	E	S	S
Battery—335-amp, maintenance-free	S	S	NA	NA
Battery—370-amp, maintenance-free (included with optional 2.2-liter turbocharged engine)	E	E	S	S
Battery Test Indicator	S	S	S	S
Brakes—Power dual diagonal, disc front, drum rear	S	S	S	S
Bumper Rub Strips—Front and rear, color-keyed (black on ES four-door)	S	S	S	S
Bumpers—Energy-absorbing	S	S	S	S
Carburetor—Electronic feedback (available with 2.2-liter engine only)	S	S	NA	NA
Chimes—Key-in-ignition, door-ajar seat belt warning, headlamps-on	S	S	S	S
Cigarette Lighter	S	S	S	S
Clock—Electronic digital (integral with all radios)	S	S	S	S
Computer—Combustion, electronic	S	S	S	S
Console—Shift lever, storage compartment	S	S	NA	S
Convertible Top—Power, hydraulic	NA	S	NA	NA
Coolant Overflow Reservoir	S	S	S	S
Deck Lid Release—Power	E	E	S	S
Electronic Fuel Injection—With 2.2-liter engine only	NA	NA	S	S
Electronic Ignition and Voltage Regulator	S	S	S	S
Engine—Four-cylinder 2.2-liter Trans-4	S	S	S	S
Engine Cooling Fan—Electric	S	S	S	S
Front-Wheel Drive	S	S	S	S
Headlamps—Halogen, high/low beam	S	S	S	S
Headliner—Cloth-covered	S	NA	S	S
Hood—Counterbalanced	S	S	S	S
Hood Ornament—Pentastar	S	S	S	S
Hood Release—Inside	S	S	S	S
Horns—Dual	S	S	S	S
Instrument Cluster—Electronic tachometer, speedometer and odometer, oil, volt, fuel and temperature indicators	NA	NA	NA	S

All product illustrations and specifications are based on authorized information. Although descriptions are believed correct at publication approval, accuracy cannot be guaranteed. Chrysler Corporation reserves the right to make changes from time to time, without notice or obligation, in prices, specifications, colors and materials, and to change or discontinue models. See your dealer for the latest information.

Dodge 600 ES Four-Door				
Dodge 600 Four-Door				
Dodge 600 Convertible				
Dodge 600 Club Coupe				
Lights—Ash receiver, courtesy (door-mounted), dome/reading (dome light not available on convertible), glove box, ignition switch with time delay power loss (with 2.2 EFI and optional turbocharged engine), parking brake warning, new quarter panel (convertible only), side marker with reflectors, trunk, underhood, under instrument panel (convertible only)	S	S	S	S
Lock—Fuel filler door (ignition key operated)	NA	NA	S	S
Lock—Glove box	S	S	S	S
Mirror—Inside, rearview day/night	S	S	S	S
Mirrors—Outside dual manual, chrome	S	NA	NA	NA
Mirrors—Outside dual remote control, color-keyed	NA	S	NA	NA
Mirrors—Outside dual remote control, power adjusting	E¹	NA	E¹	S²
Mirrors—Outside left remote control, right manual, bright finish	NA	NA	S	NA
Moldings—Bright, belt (black on ES), body-side with black vinyl insert (ES only), full wheel opening (not available on ES), deck lid (coupe, convertible only), sill (not available on ES), drip rail (black on ES), narrow door upper frame (coupe only)	S	S	S	S
Radio—AM, electronically tuned, with integral digital clock (may be deleted for credit on factory orders)	S	S	S	S
Roof—Landau: padded vinyl	S	NA	NA	NA
Seat—Rear passenger, convertible	NA	S	NA	NA
Seats—Cloth-and-vinyl center armrest bench with carpeted door trim panels	NA	NA	S	NA
Seats—Cloth-and-vinyl high-back bucket with dual recliners and carpeted door trim panels	S	NA	NA	S
Seats—Vinyl low-back bucket	NA	S	NA	NA
Spare Tire—Compact, high pressure	S	S	S	S
Steering—Manual, rack-and-pinion	NA	S	NA	NA
Steering—Power, rack-and-pinion	S	E	S	S
Steering Wheel—Luxury, two-spoke, color-keyed	S	S	S	S

Dodge 600 ES Four-Door				
Dodge 600 Four-Door				
Dodge 600 Convertible				
Dodge 600 Club Coupe				
Tires—P185/70R14 steel-belted performance radial-ply with raised black letters, Goodyear Eagle GT	NA	NA	NA	S
Tires—P185/70R14 steel-belted radial blackwall	NA	S	NA	NA
Tires—P185/70R14 steel-belted radial wide white sidewall	S	E	S	NA
Top—Convertible, vinyl, with vinyl boot and concealed fasteners	NA	S	NA	NA
Transaxle—Automatic, three-speed TorqueFlite	E	S	S	E
Transaxle—Manual, five-speed	S	NA	NA	S
Wheels—Road, cast aluminum (set of four)	E	E	E	S
Wheel Covers—Luxury	S	S	S	NA
Window—Convertible, rear, tinted glass	NA	S	NA	NA
Windshield Wipers—Deluxe, with intermittent wipe	E	E	E	S
Windshield Wipers—Two-speed with electric washers, concealed	S	S	S	NA
S—Standard, NA—Not available, E—Extra cost, ¹Bright, ²Black				

OPTIONAL EQUIPMENT

Certain models, packages, and options are subject to specific restrictions, requirements, or late availability. Consult your dealer for current ordering information.

- Air conditioning (tinted glass required—see Engine Cooling)
- Freestanding armrest (standard on convertible, ES sedan; not available on 600 sedan)
- 500-amp heavy-duty maintenance-free battery
- Front and rear bumper guards
- Electrically heated rear window defroster (required on two-door coupes and sedans in New York state; not available on convertible)
- California Emissions Controls (required at extra cost on all vehicles registered in California)
- 2.2-liter turbocharged EFI engine (automatic transaxle required at extra cost on coupe)
- 2.6-liter engine (automatic transaxle required at extra cost)
- Engine cooling,* recommended with vehicles to be equipped with field-installed air conditioning (see your dealer for details)

INTERIOR TRIM



Standard 600 club coupe/600 ES sedan interior. Cloth-and-vinyl high-back bucket seats with integral head restraints and dual seatback recliners. Center console included with freestanding armrest on ES only, optional on coupe. Offered in Blue, Charcoal (coupe only), Silver and Charcoal (ES only), Red, Beige, Brown.*



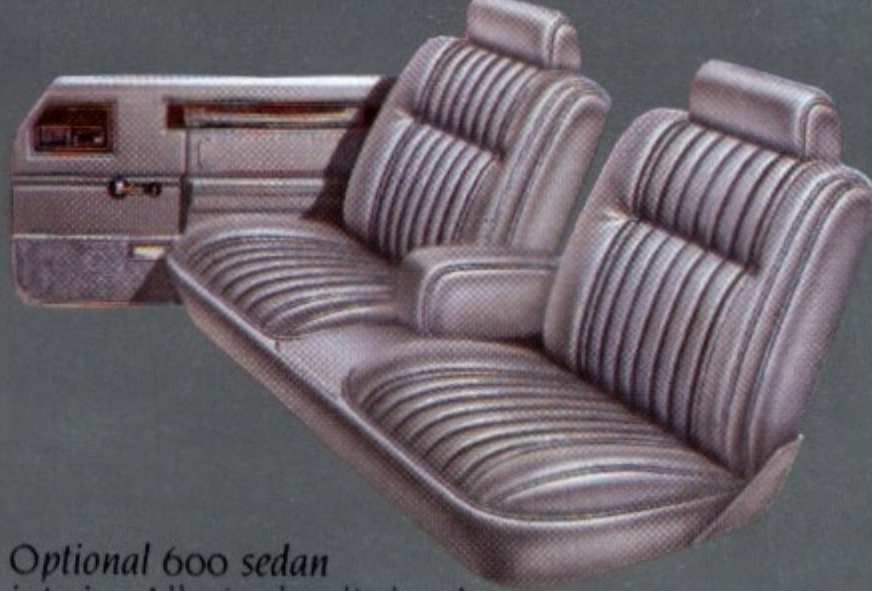
Standard 600 sedan interior. Cloth-and-vinyl center armrest bench seat with adjustable head restraints, folding center armrest, and cloth-covered door trim panels. Available in Blue, Silver, Red, Beige.*



Standard 600 convertible interior. Vinyl low-back bucket seats with adjustable head restraints and dual seatback recliners. Center console and freestanding armrest included. Offered in Red/White, Red, Beige.*



Optional 600 club coupe interior. Cloth-and-vinyl center armrest bench seat with adjustable head restraints. Offered in Blue, Charcoal, Red, Beige, Brown.*



Optional 600 sedan interior. All-vinyl split-back seat with folding center armrest and adjustable head restraints. Offered in Silver, Red, Beige.*



Optional Dodge 600 sedan interior. Cloth 50/50 seat with dual armrests and seatback recliners, center console/lets with seat controls, and seatback pockets. Offered in Blue, Charcoal, Red, Beige.*

- Electronic Voice Alert
- Tinted glass (standard on convertible; required with air conditioning)
- Cornering lamps
- Floor mats, front and rear, color-keyed (front only on convertible)
- Illuminated Entry System
- Dual remote control mirrors: chrome (coupe only)
- Illuminated right visor vanity mirror (not available on convertible)
- Dual power adjustable mirrors (not available on convertible; standard on ES sedan)
- Narrow body-side molding with color-keyed vinyl insert (black—standard on ES sedan)
- Power deck lid release (standard on 600, ES sedan)
- Power door locks
- Power left bucket seat (not available on 600 sedan)
- Power bench seat (coupe and 600 sedan only)
- Power windows
- Power rack-and-pinion steering (convertible only)
- AM/FM electronically tuned stereo radio with integral digital clock
- AM/FM electronically tuned stereo radio with six speakers and integral digital clock
- AM/FM electronically tuned stereo radio, cassette player with Dolby sound system,¹ six speakers, and integral digital clock
- Radio delete for credit (factory orders only)
- Premium Speaker Package: available with electronically tuned stereo radios (not available on convertible)
- Conventional spare tire
- Automatic speed control (deluxe windshield wipers—standard on ES—required)
- Luxury leather-wrapped two-spoke steering wheel
- All-vinyl bench seat with center armrest (600 sedan only) (cloth-and-vinyl on club coupe)
- 50/50 cloth seat with driver and passenger seatback recliners, center-mounted console/lets with seat controls, and seatback pockets (600 sedan only)
- TorqueFlite automatic transaxle: wide-ratio three-speed (coupe and ES sedan only)
- Tilt steering column (deluxe intermittent windshield wipers—standard on ES—required)
- Upper body accent tape stripes (standard on ES

- sedan)
- Two-tone paint (coupe and 600 sedan)
- Trunk dress-up
- Undercoating
- Wire 14-inch wheel covers (four; not available on ES)
- Cast aluminum 14-inch wheels (four; standard on ES)
- Deluxe intermittent windshield wipers (standard on ES)

*Not available with air conditioning. ¹Dolby is a trademark of Dolby Laboratories.

STANDARD SAFETY FEATURES

- Safety-Rim wheels
- Combination lap-shoulder belts for the driver and right front passenger, and lap belts for all other passengers
- Seat belt reminder system
- Energy-absorbing steering column or steering wheel
- Dual braking system with separate brake fluid reservoirs in the master cylinder
- Brake fluid pressure loss warning light (also serves as indicator when parking brake is applied)
- Hazard-warning flasher system
- Turn signals with lane-change feature
- Backup lights
- Energy-absorbing instrument panel and sun visors
- Front seat head restraints
- Energy-absorbing front seatbacks
- Inside and outside rearview mirrors
- Side marker lights and reflectors
- Seatback latches on folding front seats
- Fade-resistant front disc brakes
- Electric windshield washers and wipers
- Ignition and steering column lock
- Anti-theft trunk lock
- Headlamp and wiper circuit breakers with automatic reset
- Key-left-in-ignition warning
- Non-override door locks (except driver's door)
- Resilient window crank knobs
- Side door beams
- Dual throttle return springs
- Interlocking door latches
- Recessed inside door release handles
- Rotary glove box latch
- Reinforced windshield header and roof (not available on convertible)
- Glare reduction measures for windshield wipers, instrument panel and steering wheel
- Double ball-joint rearview mirror mount

EXTERIOR COLORS

Black¹

Garnet Red Pearl Coat²

Crimson Red

Radiant Silver Crystal Coat

Nightwatch Blue¹³

Beige Crystal Coat

Pearl White

Charcoal Crystal Coat³

Mink Brown Pearl Coat²

Gunmetal Blue Pearl Coat²

¹Not available on Dodge 600 ES. ²Extra cost. ³Not available on Dodge 600 convertible. ⁴Not available on Dodge 600 convertible, ES.

Two-Tone Paint Package⁴
Coupe and Four-Door Sedan

Mink Brown Pearl Coat/
Beige Crystal Coat

Gunmetal Blue Pearl Coat/
Radiant Silver Crystal Coat

NOTE: Due to occasional printing irregularities, the colors shown may vary slightly from actual hues. See your Dodge dealer for accurate color chips.

DIMENSIONS, WEIGHT AND CAPACITY

	600 Club Coupe	600 Convertible	600/ES Four-Door Sedan
Length¹	179.5"	179.5"	187.4"
Width	68.5"	68.5"	68.3"
Height	52.6"	54.1"	52.9"
Wheelbase	100.3"	100.3"	103.3"
Turning Diameter	34.8'	34.8'	35.6'
Curb Weight (lbs.)	2,474	2,595	2,593/2,553
Tread—Front:	57.6"	57.6"	57.6"
—Rear:	57.0"	57.0"	57.0"
Cargo Capacity (est.)	15.0 cu ft	10.5 cu ft	17.0 cu ft
Passenger Capacity:	5	4	6/5
Fuel Capacity (gal.)	14	14	14

¹Includes bumper guards.

ENGINES AND TRANSAXLES

Type	Displacement	Bore & Stroke	Comp. Ratio	Horsepower SAE Net @ RPM	Torque	Transaxle Availability
Federal/California 4-cyl OHC	2.2-liter (135 CID)	3.44" x 3.62"	9.0:1	96 hp @ 5,200	119 lb-ft @ 3,200	S—Five-speed manual (std coupe), 2.57 OTGR O—Automatic (std convertible), 3.02 OTGR
Federal/California 4-cyl OHC	2.2-liter¹ (135 CID)	3.44" x 3.62"	9.0:1	99 hp @ 5,600	121 lb-ft @ 3,200	S—Five-speed manual (std ES), 2.57 OTGR O—Automatic (std sedan), 3.02 OTGR
Federal/California 4-cyl OHC	2.6-liter² (156 CID)	3.59" x 3.86"	8.7:1	101 hp¹ @ 4,800	140 lb-ft¹ @ 2,800	O—Three-speed automatic (coupe, ES only, std sedan, convertible), 3.02 OTGR
Federal/California 4-cyl OHC turbo	2.2-liter (135 CID)	3.44" x 3.62"	8.1:1	142 hp @ 5,600	160 lb-ft @ 3,200	S—Five-speed manual (ES), 2.57 OTGR O—Three-speed automatic (std sedan, convertible), 3.02 OTGR

S—Standard, O—Optional, OTGR—Overall top gear ratio. ¹Standard on 600, 600 ES sedans only. ²Built by Mitsubishi Motors Corporation. ³In California, 99 hp and 137 lb-ft.

OPTIONAL 5/50 SERVICE CONTRACT COVERAGE



Chrysler Corporation offers a 5/50 "Added Coverage" (in Florida "Added Value Plan") Service Contract which provides

protection against rising service and parts costs for specified major repairs not included in the 5/50 limited warranty. Coverage starts on the specified components in the plan after your vehicle's "basic" 12-month/12,000-mile warranty expires on these components and continues for five years or 50,000 miles (whichever occurs first) from the vehicle's original warranty start date. A deductible applies.

The plan provides an allowance for alternate transportation and towing. Ask your dealer for details.

CORROSION PROTECTION

Chrysler Corporation's corrosion

protection is among the best in the industry. It includes the extensive use of galvanized sheet metal panels, one of the best known methods of corrosion protection, and pre-coated steel in critical areas, as well as the seven-step dip-and-spray process.

CONSIDER LEASING FROM THE LEASING PROFESSIONALS

In these days of tight money and high interest rates more consumers are considering leasing as an alternative to buying. Leasing a new Dodge 600 usually eliminates large down payments and often results in lower monthly payments because you're paying only for that portion of the vehicle life under the leasing agreement.

Leasing could be right for you, and the more you learn about it the more likely you are to consider it seriously. If leasing sounds like a sensible solution to your transportation needs, talk it over with us—your leasing professionals.



*An
American
Revolution*





NINETEEN EIGHTY FOUR

DODGE

600 SERIES

