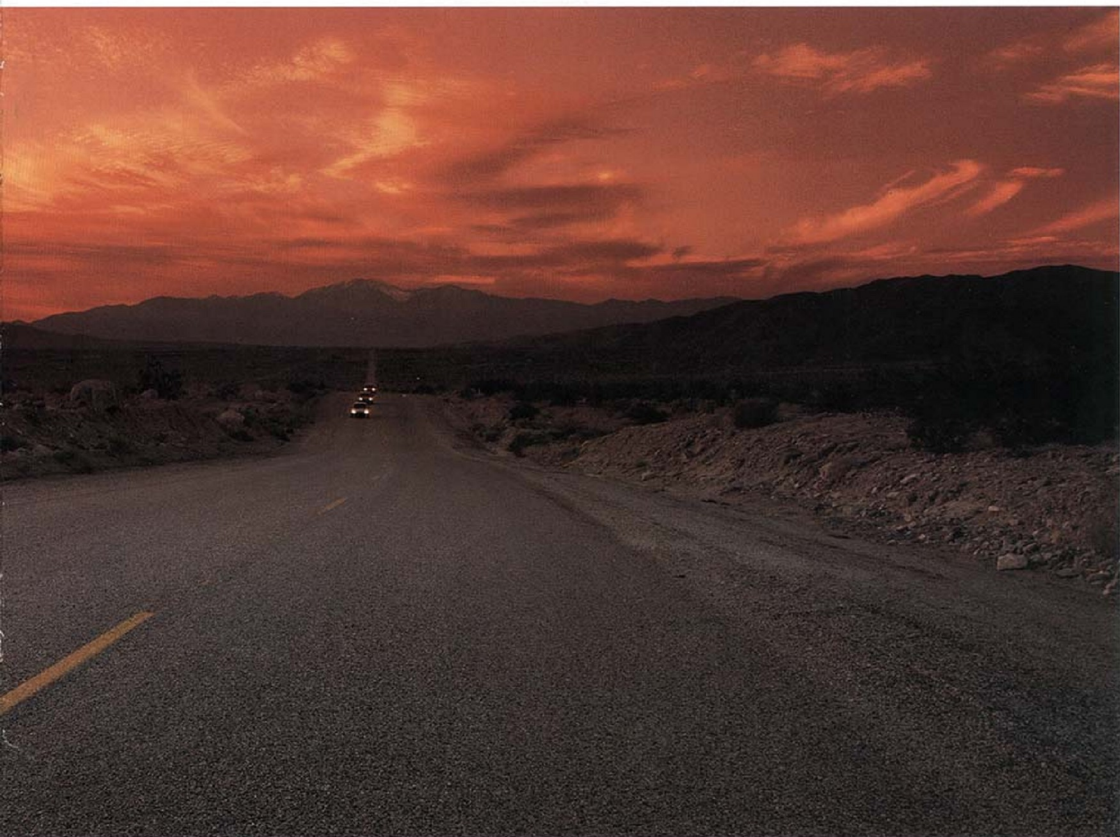


ACURA LEGEND AND INTEGRA
PRECISION CRAFTED AUTOMOBILES





Introducing Acura. A new dimension in performance automobiles. From a new division of American Honda.

Honda Formula 1 racing experience is evident in Acura engine technology.

To an entire generation, the name Honda has come to mean something special in automobiles.

Special expectations, for reliability, efficiency and exceptional value.

Now a new division of American Honda is raising

a new set of expectations. For a new generation of American drivers.

Drivers who demand performance. Drivers who demand the look, feel and sound of quality. Drivers who demand that an automobile be considerably

more than simply a means of transportation.

Acura. Precision-crafted automobiles for discriminating drivers: people who don't like compromise.

AUTOMOBILES DESIGNED AROUND THE DRIVER.

At Honda Research and Development, possibilities have always represented the launch pad to the future.

There could be no better starting point than this for a range of automobiles that sought to add a new dimension to the concepts of quality and performance.

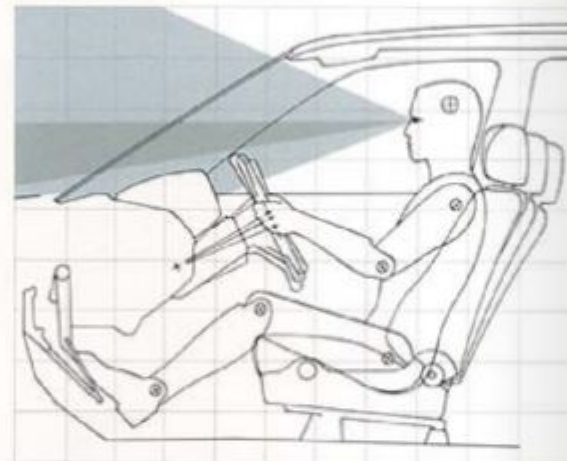
And so it was that five years ago a team of development engineers gathered at Honda R&D. To challenge the existing order of automotive design.

They were allotted time and resources.

In short, carte blanche.

There was only one firm mandate. Since these new automobiles were dedicated to demanding drivers, the driver had to be the starting point. The point around which the automobile must be developed.

Instead of thinking in terms of what driving had been, the development team set out to define what



Acura automobiles emphasize a new level of ergonomic precision.

it should be: an integration of man and machine.

An automobile that has been created for the discerning driver. A car designed and engineered from the driver out.



Honda Research and Development's Tochigi Proving Grounds, Japan.

PRECISION: THE KEY TO DRIVING PERFORMANCE.

Performance today is a total concept. Handling, braking and ergonomics have come to count for almost as much as horsepower. However, automobile enthusiasts still begin their assessment of a car's potential in only one place—the engine compartment.

And nowhere else does precision count as much as it does under the hood.

Precision was the watchword in the development of Acura

four-valve engines: refined powerplants that trace their lineage to the exacting world of Formula 1 racing. Where tolerance variations of mere microns can sometimes make the difference between winning and losing.

But the Acura precision story goes well beyond performance engines. To innovative suspension systems designed to provide the discerning driver with the optimal blend of stability, ride and responsive handling.

To interiors designed to reduce stress and enhance the partnership between driver and machine. And to rigid unit-body construction that rewards the owner with the solid feel of quality.

ENGINEERED BY ENTHUSIASTS. BUILT BY PERFECTIONISTS.

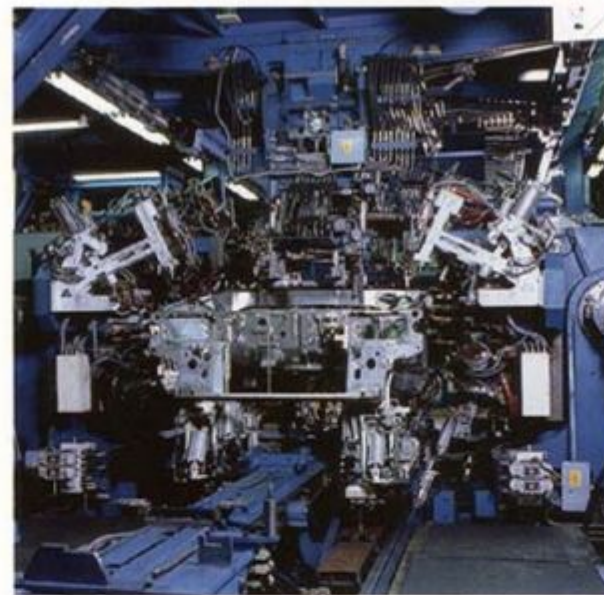
It was no accident that the development team was able to meet—and surpass—its ambitious goals. Every member of this international group is a driving enthusiast. Men and women who understand automobiles as transportation for the spirit, as well as the body.

Nor is this extraordinary level of automotive enthusiasm confined to the Honda R&D center.

It extends throughout all facets of production.

To make the finished product match the original vision of the designers.

So that achievement is measured against one critical standard: the attainment of uncompromised perfection—Acura automobiles.



Acura production represents a highly successful partnership of state-of-the-art machinery and precision craftsmanship.

For the Acura driver, it is not enough that a car has outstanding eye appeal and stirring performance. It also must retain these important qualities over the long haul.

EXACTING PRODUCTION BUILDS EXCELLENCE.

Techniques such as automated seam welding are employed in those places where unsightly spot welds could possibly compromise a high-lustre, premium quality paint finish.

Zinc-coated steel, treated metal and a chemically protected underbody help prevent corrosion. Processes that allow for a 3-year warranty* against underbody rust through. To help preserve the beauty of your Acura automobile.

IT TAKES TEAMWORK TO ENSURE QUALITY

Even the machinery that carries out the exacting production procedures must be at the leading edge.

Unswerving commitment to excellence is clearly visible also in the production process, where attention to craftsmanship enhances the accuracy of automated production methods.

Engineers and workers meet regularly on the production line, constantly seeking to refine and improve the quality of the production process.

It is this pursuit of quality that truly distinguishes Acura automobiles.

THERE IS NO SUBSTITUTE FOR PRECISION.

Any automobile represents an orchestration of parts and components. The difference between the ordinary and the extraordinary is determined by how precisely the parts fit into one harmonious whole.

When viewed from this perspective, Acura automobiles represent a virtual symphony of precision.

Because each part is precisely what it should be.

Aesthetically, as well as dimensionally and structurally, each subsystem has been incorporated into the total vehicle. Each vehicle is a precise mirror of the designers' original intent.

Here is precision you can feel, as well as see and hear.

The precise, solid sound of triple seal doors. The tailored relationship between crucial controls and driver. The taut feel of responsive suspension. The compatibility of transmissions that are efficiently geared. And the surge of a powerful engine, inspired by Formula 1 racing.

Precision: With Acura, it's the difference between the automobile as transportation and the automobile as an extension of the driver.

Uniting man with machine.

When viewed from this perspective, Acura automobiles represent a virtual symphony of precision.

Because each part is precisely what it should be.

Aesthetically, as well as dimensionally and structurally, each subsystem has been incorporated into the total vehicle. Each vehicle is a precise mirror of the designers' original intent.

Here is precision you can feel, as well as see and hear.

The precise, solid sound of triple seal doors. The tailored relationship between crucial controls and driver. The taut feel of responsive suspension. The compatibility of transmissions that are efficiently geared. And the surge of a powerful engine, inspired by Formula 1 racing.

Precision: With Acura, it's the difference between the automobile as transportation and the automobile as an extension of the driver.

Uniting man with machine.

When viewed from this perspective, Acura automobiles represent a virtual symphony of precision.

Because each part is precisely what it should be.

Aesthetically, as well as dimensionally and structurally, each subsystem has been incorporated into the total vehicle. Each vehicle is a precise mirror of the designers' original intent.

Here is precision you can feel, as well as see and hear.



*Three years, unlimited mileage.

Driving is now one of life's most gratifying experiences.

From the onset, the Acura Legend represented a totally new concept in luxury sedans. For its engineers and its designers enjoyed the greatest luxury of all—starting from scratch.

The result is a unique integration of quality, comfort and space in an automobile that is responsive and efficient.

A driver's automobile. A precision-crafted car built around the serious driver. For the pleasure of driving.

Beneath Legend's low, aerodynamic hood beats the heart of a race-bred engine. Inspired by Formula 1 racing, a 151-hp, 4-valves per cylinder,

single-overhead cam V-6 propels the Acura 5-speed Legend from standstill to 50 mph in just 6.1 seconds. And whisks it to a top speed of over 120 mph.

PERFORMANCE WITHOUT STRESS.

In creating the Legend, designers considered more than the driver's mechanical needs. They considered his psychological needs as well. In the Legend, therefore, you'll find performance balanced with driver comfort. And that reduces stress.

The fade-resistant, four-wheel power disc brakes and fully independent suspension instill confidence. Its power rack and pinion steering provides quick, precise, responsive control.

Inside, the Acura Legend is quiet and smooth. Rigid



The seat, gauges and controls are positioned to unite man with machine.

unit-body construction, triple-layer door seals, flush-mounted windows, an aerodynamic body and generous amounts of insulation silence the noise from the world outside.

Hydraulic engine mounts dampen noise and road vibrations before they can dampen spirits. And 301-degree visibility provides an excellent all-around view.

IMPRESSIVE SMOOTHNESS FROM AN IMPRESSIVE SUSPENSION.

A four-wheel independent suspension with progressive rate rear coil springs in combination with a long wheelbase and wide track provides the smooth, comfortable ride of a large car.

And with the handling and stability it requires to satisfy the demands of the driving enthusiast.



Wide, low-profile tires and 4-wheel independent suspension inspire confidence with sure-footed handling.

This performance engine, however, is only part of a balanced package.

A study in space: The Legend is sensibly sized on the outside yet surprisingly spacious within.



The trunk lid opens to the bumper to ease lifting effort.

Large, easy-to-read analog gauges are within the driver's line of sight.

Everything within the Legend is so well placed, it's as if the driver has been united with the automobile.



The Legend is so intelligently equipped, your options are few.

Engineers very carefully evaluated what items should go into the Legend. When all was said and done, there emerged a well-honed list—a complete group of components worthy of being included with every Legend.

Five speed or automatic? That's your only decision. With the exception of any dealer-installed accessories, most everything else has been provided.

EXTERNALLY, THERE'S MORE THAN MEETS THE EYE.

With Legend, the beauty is more than skin deep. Behind every feature, there's an important function.



Center console is designed with a cellular phone in mind.

Bronze-tinted glass reduces fatigue by cutting glare, heat and ultra-violet rays. Outside, the power-operated mirrors are aerodynamic to reduce drag.

Integral fog lamps supplement Legend's headlamps



Electric sunroof slides open or tilts at rear. A sunshade is included.

with a low, wide beam that improves visibility in fog, snow or heavy rain.

Tucked within stylishly flared fenders, wide, low-profile Michelin 205/60 R15 MXV tires on cast-alloy wheels create an aggressive, muscular appearance.

A hint that the Acura Legend is not just another luxury sedan.

OUTSIDE, THERE'S PERFORMANCE. INSIDE, PAMPERED PEOPLE.

Inside the Legend, you find contoured front seats with fully reclining seatbacks. And for the driver, there are also adjustable lumbar and thigh supports.

From the comfort of your seat, enjoy the fine sound produced by Legend's AM/FM ETR multiplex cassette radio—a stereo with a seven band programma-

window; the other, a fender-mounted mast—attract a strong FM signal. Reception from the two is electronically monitored and from that the best signal is automatically selected.

Air conditioning, multi-level heater, side window demisters, a rear window defogger and a power sunroof that slides open or tilts at the rear let you create your own environment.

And you can operate the cruise control, adjust steering column height, power windows and power door locks from fingertip controls.

A spacious rear seat

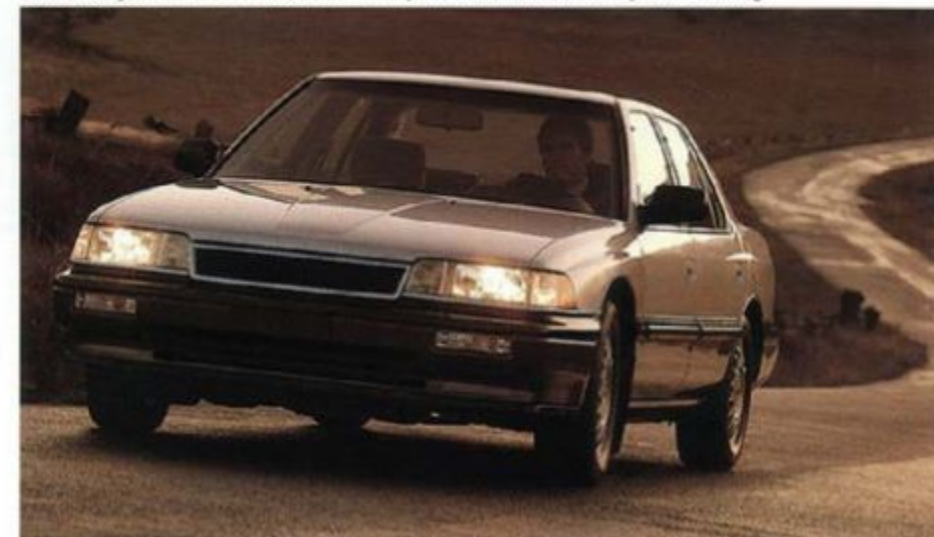
pampers passengers with a fold-down center armrest, adjustable headrests



Steering column adjusts vertically for driver comfort.

and individual reading lamps. Thick, cut-pile carpeting covers the floor from door to door.

Beneath this dignified shape lurks the excitement of a 24-valve V-6, fully independent suspension, four-wheel power-assisted disc brakes and power-assisted rack and pinion steering.



The Legend: engineered for performance, confidence, control and comfort.

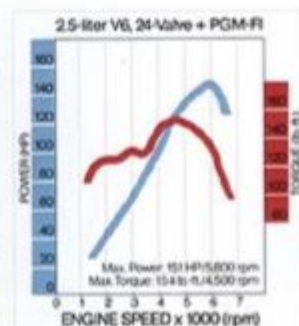
The Legend's 151 hp 2.5 liter, 24-valve, single overhead-cam V-6 traces its lineage to Honda Formula 1 racing. To save weight and dissipate heat, the block and cylinder heads are die-cast from aluminum alloy.

Four valves per cylinder—two intake, two exhaust—increase air and exhaust gas flow to and from combustion chambers, producing responsive power and excellent fuel efficiency.

To ensure uniform flame travel, for more complete combustion, the spark plug has been positioned in the center of each chamber.

For thermal efficiency and power, the engine's compression is a relatively high 9.0:1. Yet 24-valve breathing assures premium performance from non-premium unleaded fuel.

Although a sophisticated race-bred engine, Legend's high-performance V-6



Impressive torque and power.

doesn't need a pit crew to keep it in tune. Its valves adjust automatically, with a system of hydraulic lifters.

COMPUTER PROGRAMMED FUEL INJECTION: PRECISION WITH A MIND OF ITS OWN.

Legend's electronic fuel injection system distributes fuel according to specific commands received from a compact eight-bit micro-processing unit.

The most appropriate measure of fuel is then injected into each of the manifold runners at exactly the right time: precisely synchronized with the intake stroke of each piston.

As a result, power is up, and so is fuel efficiency.

TRANSMISSIONS GEARED FOR PERFORMANCE.

Whether you choose the 5-speed manual transmis-

sion or the 4-speed automatic with lockup torque converter, both are perfectly matched to the engine's needs. There's always a gear just right for the job.

With either manual or automatic, first gear assures impressive acceleration. While at highway speeds, overdrive gears relax the engine for quiet, economical driving. It's the best of both worlds.

The automatic transmission's efficiency is further improved by a Programmed Lockup Converter system. Sensors determine at what speed and gear the torque converter should lock to eliminate converter slippage. And therefore improve fuel economy.

HANDLING OF A HIGHER CALIBER.

A performance automobile requires a suspension that provides high-speed stability and control over a wide variety of road surfaces and speeds. It must be comfortable but without masking road feel and predictability.

The Legend's suspension is all that. It's fully independent at all four wheels: in front, coil springs are supported by double wishbones. In the rear, coils are progressive-rate. Comfortable.

Rack and pinion steering with power assist



Double wishbone front suspension

sure-footed and controlled. Like two springs in one, the progressive-rate coils stiffen as they compress to achieve a smooth ride and good handling, whatever the load may be.



Front disc brakes ventilate heat.

Reduced Friction Strut rear suspension



Rear disc brakes

DESIGNED AROUND THE DRIVER FOR THE DRIVER.

The Legend was designed around the most important part of the automobile—the driver—to minimize stress and fatigue. A comfortable, contoured driver's seat adjusts to the body and provides firm lateral support.

The steering column adjusts vertically. Large, white-on-black analog gauges can be read at a glance. Controls are reached easily. Naturally.

Expansive windows and a low hoodline provide an

power assist increases, providing assistance when you need it most: for parking.

Yet at highway speeds, assistance is eliminated, allowing you to feel the road and react to its changes.

Steering is firm, not vague; tight, not touchy. The Acura Legend goes precisely where you point it.

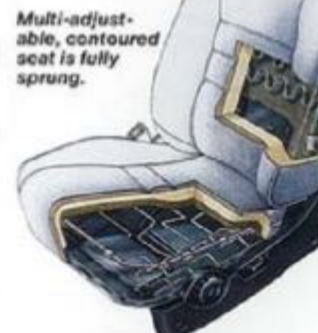
STOPS AS GREAT AS IT GOES.

As befitting a performance car, the Legend has a performance braking system: power-assisted four-wheel disc brakes.

To minimize brake fade caused by heat retention, engineers used ventilated front discs. And, two separate hydraulic fluid systems divide the brakes diagonally—right front to left rear, left front to right rear—to help protect against the total loss of braking power. And assure confidence, stop after stop.

POWER STEERING THAT'S LOGICAL, NOT TYPICAL.

Legend's power steering is advanced beyond the norm: it's sensitive to vehicle speed, not engine speed. As speed decreases,



Multi-adjustable, contoured seat is fully sprung.

unobstructed view of the road ahead. Overall, there's 301 degrees of visibility. The result is comfort, confidence and control.

STYLED BY THE WIND TO SLIP THROUGH THE AIR.

The Legend's lines are soft, subtle and dignified. Yet it's extremely aerodynamic. In fact, extensive computerized wind tunnel testing has

made Legend one of the most aerodynamic cars on the road today.

Its 0.32 drag coefficient contributes not only to fuel efficiency but to a whisper-quiet interior undisturbed by wind noise. All within elegant lines designed to endure the test of time.

A SMOOTH, QUIET RIDE BUILT UPON A SOLID FOUNDATION.

Strong but lightweight unit-body construction, a long wheelbase and wide track provide Legend with the smooth, solid, stable ride of a larger automobile. Its

strong, rigid platform and heavy-gauge sheet-metal contribute to reduced noise, vibration and harshness.

To further reduce vibration, the engine and drive train are secured to a subframe with eight rubber mounts. And the subframe is rubber mounted to the body.

Additionally, two of the Legend's engine mounts are hydraulic. Like small shock absorbers, they dampen engine and road vibrations before they can reach the passengers.

Sound-deadening insulation under the hood and along the firewall and three- and four-layer door seals combine to absorb outside noise.

The end result is an interior sound level of only 63 decibels at

65 mph. A quiet in which you can appreciate hushed conversation and the soft tones of Legend's AM/FM stereo radio and cassette.

A LONG WHEELBASE AND WIDE TRACK: COMFORT AND STABILITY.

By moving the wheels further apart, both lengthwise and laterally, Legend engineers were able to provide more interior space. And create a smooth, stable and comfortable ride.

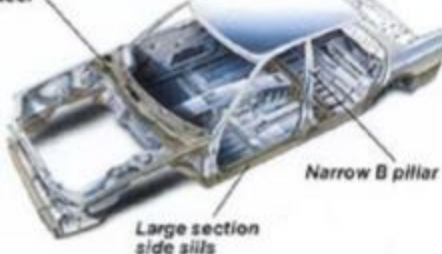
THE FINISHING TOUCH: A FOUR-COAT, FOUR-BAKE FINISH.

For a high-quality, long-lasting finish, the Legend receives extensive corrosion protection over invisibly smooth sheet welds. A distinctive 4-coat, 4-bake paint process creates a deep, durable lustre.

Developed specifically for the Legend, this process cures each layer of paint and primer at a lower temperature for a longer time. The result is a smoother, more even finish.

Legend's unit-body construction is strong and rigid but lightweight. For a ride that is smooth, solid, stable and quiet.

Extensive use of high-tensile strength steel



Narrow B pillar

Large section side sills

Integra: sports sedans that bring sophistication to fun.

With the introduction of the Integra, drivers who seek the exhilaration of performance no longer have to accept the consequences: fuel-thirsty engines, bone-jarring suspensions and cramped, noisy interiors that have often characterized traditional "sporty" cars.

There are automobiles specifically designed to enhance the pleasure of driving performance.

From its aerodynamic shape, unit-body construction and tuned suspension to the light, alloy 16-valve DOHC engine, Integra is a study in functional design and craftsmanship. A new level of sophistication.

A CAR DEVOTED TO THE DRIVING ENTHUSIAST.

On the road, the essence of driving is control. The ability of the automobile to respond



On test track or winding road, Integra shows its true spirit with flat cornering and tenacious road holding.

to the driver's commands. Promptly. Precisely.

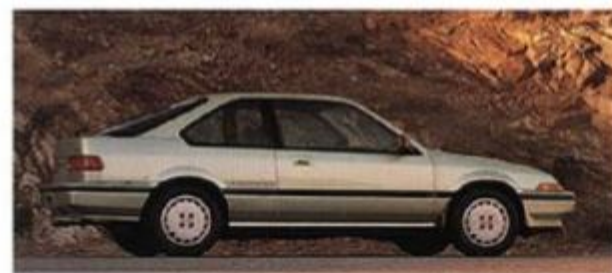
Integra's power-assisted

rack and pinion steering system has been designed to reduce the effort without removing road feel. Front and rear stabilizer bars minimize body roll. And the rear suspension layout is designed to combat geometry changes during cornering.

LESS NOISE. MORE DRIVING PLEASURE.

Integra's advanced aerodynamic design creates a quiet that bears listening. Precise planning of acoustical

details has yielded an interior that allows living room voice levels. Amid freeway



The aerodynamically advanced Integra RS 3-door is beautiful to look at from any angle.

noise. And perhaps most important of all, reduced noise means reduced stress.

A BACK SEAT WHERE COMFORT COUNTS.

In too many of today's sports sedans, the back seat is considered an afterthought. But this is not the case in the Acura Integra.

Beyond the traction advantages of front wheel drive, there are compelling package efficiencies. The entire drivetrain is mounted transversely under the hood, so it doesn't intrude into the passenger compartment. Which means more room for passengers.

If the load exceeds the basic luggage space, either or both rear seatbacks fold forward to dramatically expand cargo volume. The Integra combines sleek sedan looks with hatchback flexibility. Good looks that function.

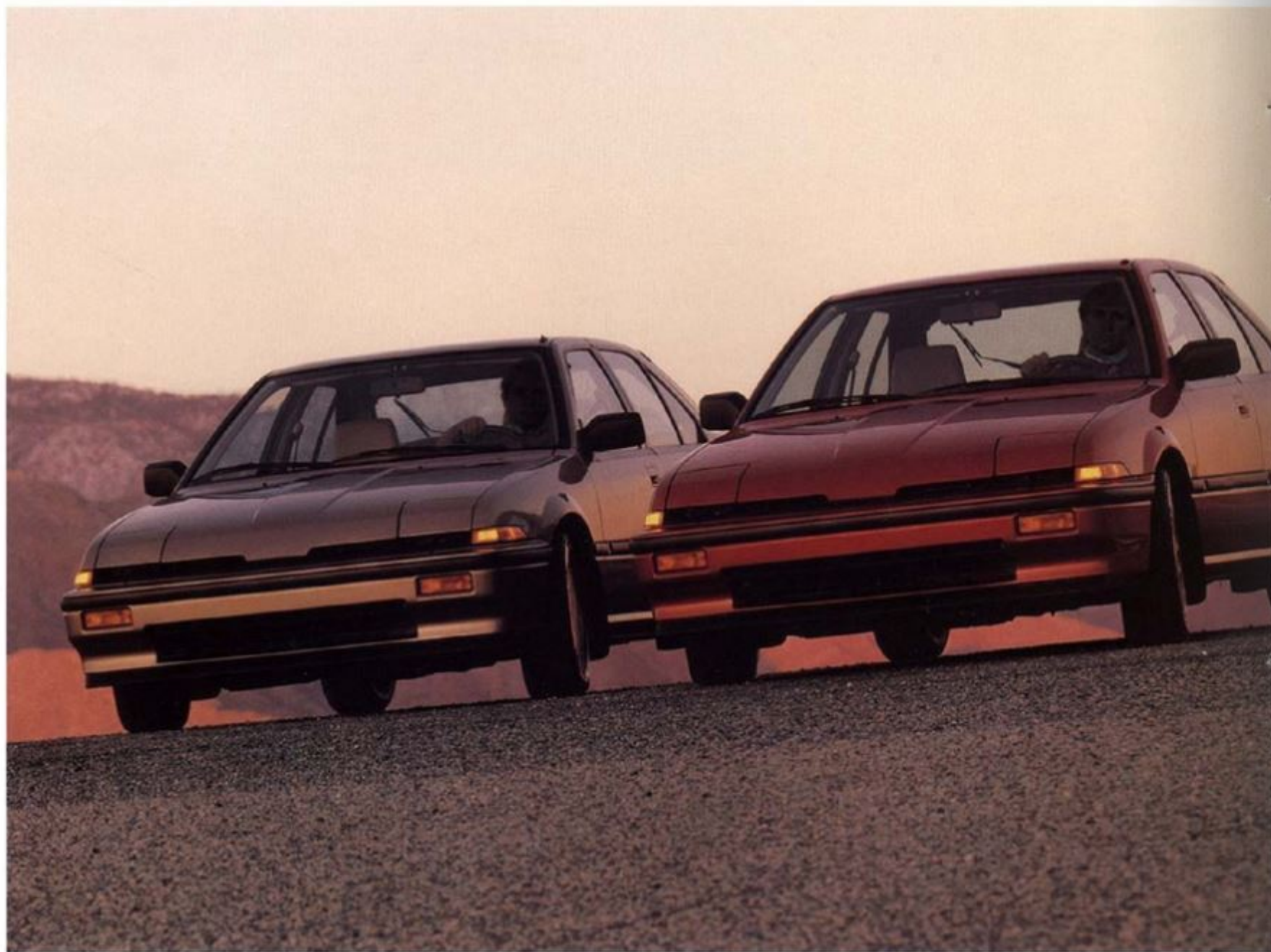
Gauges are within line of sight; controls within a finger's reach.



Either or both seatbacks fold flat for increased cargo space.

Rear suspension is designed to reduce intrusion on passenger and cargo space. Front seatbacks are concave to create more rear seat legroom. And rear seatback contouring affords the support and comfort of bucket seats.





Exhilarating performance with two extra doors for good measure.

The Integra 5-door began with one unanimous perception: An exciting driving machine need not be limited to just two or three doors.

quality. And a sporting suspension that's been tuned to isolate passengers from the harshness of less-than-perfect roads. Its two extra

5-door pays dividends in the rear seat area. Extra legroom, allowing more room for the rear seat passenger to change positions during long drives. And extra rear seat headroom, thanks to a longer roofline.



With a longer wheelbase, the 5-door provides more room and the convenience of two extra doors.

A CAPACITY FOR FUN AS WELL AS PEOPLE.

The Integra 5-door has the same set of reflexes as the 3-door model. The same precise responses. The same lithe moves and the same potent powerplant.

doors are wide. To provide comfortable access to a spacious rear seating area.

PRECISELY WHAT DRIVING WAS MEANT TO BE.

The key to the Integra 5-door was the development of its own chassis with a longer wheelbase. And without sacrificing any of the handling parameters set by the design team.

Although the wheelbase is longer, the ratio of wheelbase to overall length is unchanged.

For precise response in every move.

FIVE DOORS THAT OPEN ON SURPRISING SPACE.

The extra length of wheelbase invested in the Integra



Analog instrumentation is designed for easy reading and minimal distraction.

It knows how to dissect switchbacks or make light-work of heavy traffic.

The Integra 5-door also knows how to deliver comfort. With a supple ride

PERFORMANCE WITHOUT PRESSURE: THE INSIDE STORY.

From the outset, the reduction of stress was a strong sub-theme in the evolution of the Integra. Like all of Integra's interior, the dashboard is designed to minimize visual distractions. As are the easy-to-reach, multi-functional controls.

So is the clarity and simplicity of the instruments. The airy feeling and effort-



Design of RS 5-door interior reflects careful attention to ergonomics.

less sight lines provided by the substantial glass area and low, sloping hoodline. The carefully engineered contoured seats and interior dimensions. Even the outstanding level of cruising quiet. All of these qualities combine to put this car in a pioneer area of ergonomics.

SETTING NEW STANDARDS FOR COMFORT AND CONVENIENCE.

The Integra RS models come with an impressive list of standard equipment.

The LS models add handsome aluminum alloy wheels, power windows and power door locks (5-door LS only), an electronically

tuned AM/FM/stereo multiplex sound system with cassette, 7-band graphic equalizer and four high-quality speakers, a pop-up sunroof (3-door LS only), cruise control, and even richer grades of cut-pile carpeting and luxurious cloth upholstery.

Integra 5-door LS interior combines comfort with luxury and functional technology.



Integra: the power of precision gives driving a sporting chance.

Power. Since the dawn of the automotive age, it has been the most common distinction between the greats and the also-rans.

It's the trait that separates Acura Integra from the crowd.

Power to tame mountain roads. Or take the routine out of commuting.

Power that pulses from the experience of Formula 1 racing. Experience that elevates precision to a new level of perfection.

Perfection that is apparent in every Acura automobile.

FREE BREATHING. THE ESSENCE OF 4-VALVE TECHNOLOGY.

Integra's free-breathing 16-valve dual overhead-cam engine is a perfect example of Formula 1 influence. This racing heritage appears in details like the camshafts and followers.

The cams' shafts and the lobes are hollow. A process patented by Honda, it re-

duces camshaft weight by approximately 50 percent. This means that there is less material to put into motion, and that speeds the engine's response time as well as its power delivery.

The Integra's finger-type cam followers also provide more valve lift than traditional DOHC layouts, making it easier to fill the combustion chamber. And four valves per cylinder means greater valve area, improved flow through the chamber and improved combustion efficiency. Optimizing the power from every drop of fuel.

A further look at this sophisticated engine reveals: an aluminum alloy block, cylinder head and pistons.

It all adds up to just 207 pounds, roughly half the weight of a more conventional cast-iron 4-cylinder engine. And less weight at the front of the car means better weight distribution. For better balance, more predictable handling and less stress on components.

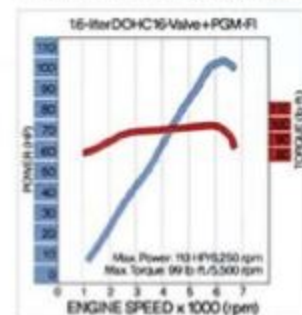
COMPUTER-CONTROLLED FUEL INJECTION: PERFECTLY TIMED POWER.

Integra's engine is fed by a microprocessor-controlled fuel injection system that monitors seven different operating parameters, to de-

termine the precise air-fuel ratio needed at any instant. For more power. And greater fuel economy. Especially in the mid range of the rpm band where most driving takes place.

TRANSMISSIONS GEARED FOR ALL NEEDS.

To make the most of this engine's remarkable poten-



Integra engine is tuned to deliver strong mid-range torque.

tial, the Integra is available with a choice of two transmissions: crisp shifting, short throw 5-speed manual, with overdrive fifth gear. Or a very smooth 4-speed automatic. It's torque converter locks up in fourth gear to minimize converter slippage and therefore maximize fuel efficiency.

SEDAN VERSATILITY. SPORTS CAR RESPONSE.

Firm but comfortable. Taut without being harsh.

Integra's suspension is designed to deliver the kind of feel and control normally associated only with sports cars.

Independent struts, torsion bars and a front stabilizer bar offer positive control on all varieties of road surfaces.

Rear trailing links with nitrogen gas-charged shock absorbers, progressive-rate coil springs and a stabilizer bar at the rear balance smooth ride with nimble handling.

Power-assisted rack and pinion steering supplies quick, precise control.

PERFORMANCE THAT STOPS AS WELL AS IT GOES.

The final critical element of serious driving performance is the ability to bring everything to a quick, safe, controlled stop.

Which is why the Integra braking system can go beyond everyday demands. With power-assisted disc brakes on all four wheels. Ventilated front discs resist fade. And two physically independent hydraulic fluid systems divide the four brakes diagonally—right front to left rear, left front to right rear—to protect against the total loss of braking power.

SPECIFICATIONS	LEGEND	INTEGRA
ENGINE:	V-6 w/DOHC, 24 valves	4-cyl. w/DOHC, 16 valves
Displacement:	152 cu. in. (2.5 liters)	97 cu. in. (1.6 liters)
Bore & Stroke:	3.30 in. x 2.95 in.	2.95 in. x 3.54 in.
Compression ratio:	9.0:1	9.3:1
SAE net hp @ rpm:	151 @ 5800	113 @ 6250
SAE net torque @ rpm:	154 lbs.-ft. @ 4500	99 lbs.-ft. @ 5500
Induction:	programmed fuel injection	
Recommended fuel:	unleaded regular	
DRIVETRAIN:	front wheel drive	
Transmissions:	5-speed manual w/overdrive 4-speed automatic w/overdrive & lockup converter	5-speed manual w/overdrive 4-speed automatic w/overdrive & lockup converter
Gear ratios:	Manual 1st: 2.92:1 2nd: 1.79:1 3rd: 1.26:1 4th: 0.97:1 5th: 0.75:1 reverse: 3.00:1 final drive: 4.20:1	Automatic 2.65:1 1.56:1 0.97:1 0.68:1 — 1.90:1 4.20:1
	Manual 3.18:1 1.94:1 1.35:1 1.03:1 0.85:1 3.00:1 4.21:1	Automatic 2.71:1 1.56:1 1.03:1 0.78:1 — 1.95:1 4.21:1
BODY/SUSPENSION/CHASSIS:		
Body/frame:	unit body	unit body
Front suspension:	indep.—double wishbone, coil springs, stabilizer bar and hydraulic shocks	indep.—torsion bars, struts, stabilizer bar and hydraulic shocks
Rear suspension:	indep.—trailing links w/coil springs, stabilizer bar and nitrogen gas-filled shocks	semi-indep.—beam axle, trailing links, w/coil springs, stabilizer bar and nitrogen gas-filled shocks
Brakes:	power-assisted four wheel disc brakes	power-assisted four wheel disc brakes
Front brakes:	ventilated disc, 10.3 in.	ventilated disc, 9.5 in.
Rear brakes:	solid disc, 10.2 in.	solid disc, 9.4 in.
Wheels:	5.5JJ x 15 in. light alloy	5.5JJ x 14 in. steel (RS)**
Tires:	Michelin MXV 205/60 R15	Michelin MXV 195/60 R14
STEERING:	power-assisted rack & pinion+	power-assisted rack & pinion
Ratio:	17.6:1	18.0:1
Turns, lock to lock:	3.45	3.6
Turning circle, curb to curb:	36.1 ft.	30.8 ft./32.8 ft*
DIMENSIONS:		
Wheelbase:	108.7 in.	96.5 in./99.2 in*
Track, front/rear:	59.0 in./57.5 in.	55.9 in./56.5 in.
Overall length:	189.4 in.	168.5 in./171.3 in*
Overall width:	68.3 in.	65.6 in.
Overall height:	54.7 in.	50.8 in.
Curb weight:	3077 lbs. (5-spd.) 3108 lbs. (auto.)	3-dr.: 2326 (RS), 2357 (LS) 5-dr.: 2390 (RS), 2416 (LS)
Wt. dist., frt./rear:	63%/37%	60%/40%, 59%/41%*
Headroom, frt./rear:	37.2 in./36.1 in.	37.5 in./36.3 in*
Legroom, frt./rear:	42.3 in./34.2 in.	40.7 in./29.3 in., 40.7 in./33.9 in*
Hiproom, frt./rear:	51.3 in./55.1 in.	49.5 in./43.7 in., 49.5 in./54.2 in*
Shoulder room, f/r:	55.8 in./55.4 in.	NA
EPA int./cargo vol.:	104 cu. ft./14 cu. ft.	96 cu. ft./16 cu. ft.
Fuel tank:	18 U.S. gallons	13.2 U.S. gallons
EPA FUEL MILEAGE:	20/25 mpg w/5-speed 19/24 mpg w/automatic	26/30 mpg w/5-speed 25/31 mpg w/automatic

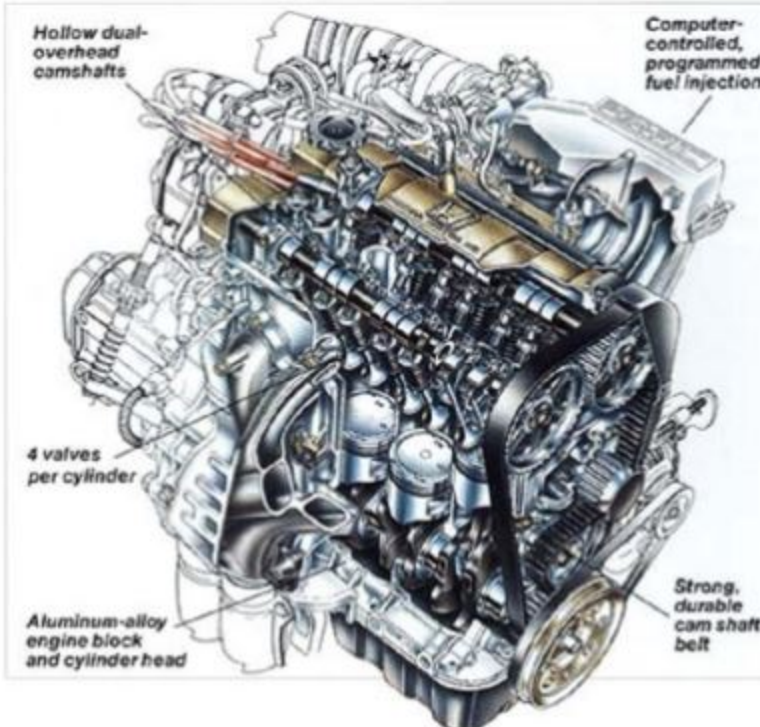
*First numbers refer to 3-door Integra models. Second numbers refer to 5-door. + Speed sensitive on Legend.
**LS: 5.5JJ x 14 in. light alloy. (1) For comparison purposes only.

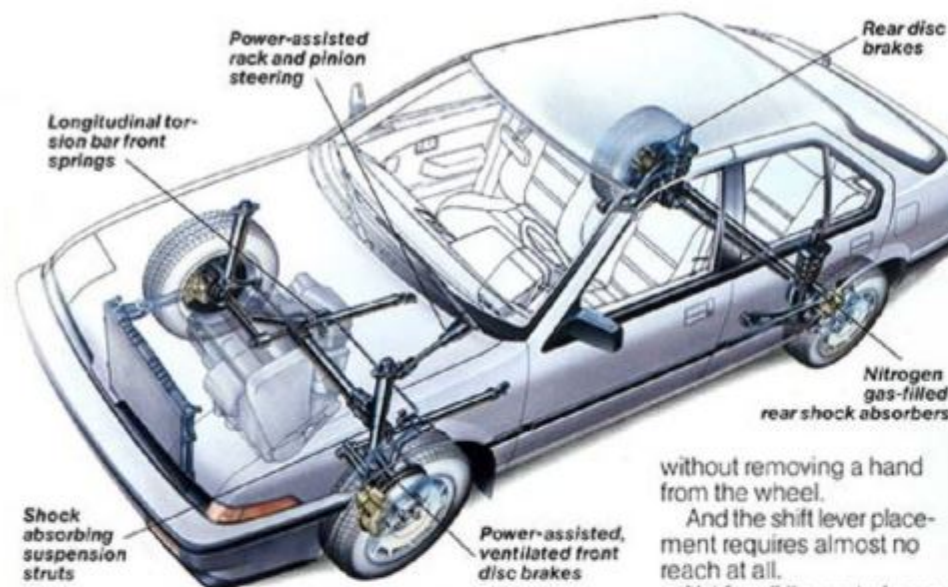
FEATURES	LEGEND	INTEGRA LS	INTEGRA RS
EXTERIOR FEATURES			
Light alloy wheels	■	■	○
Tinted glass	■	■	■
Dual remote side view mirrors	■	■	■
Halogen headlamps	■	■	■
Integral fog lamps	■	na	na
High-mounted stoplamp	■	■	■
Color-keyed front air dam and bumpers	■	■	■
Full wraparound bodyside molding	■	■	■
Full wheel covers	na	na	■
Front mud guards	■	■	■
INTERIOR FEATURES			
Air conditioning	■	○	○
Power-operated sunroof with sliding shade	■	na	na
Removable pop-up sunroof with sunshade	na	■+	na
Power windows and power door locks	■	■*	na
AM/FM multiplex, electronically tuned cassette radio with 7-band programmable graphic equalizer, four speakers, twin antennas and remote controls	■	■**	○**
Adjustable steering column	■	■	■
Intermittent wipers	■	■	■
Electric rear window defogger (4)	■	■	■
Side window demisters	■	■	■
Remote release for trunk/hatch lid	■	■	■
Remote release for fuel filler door	■	■	■
Push-button heating and ventilation	■	■	■
Infinitely adjustable fan and temperature controls	■	na	na
Map lights, rear seat reading lamps, door-mounted courtesy lights, cargo light (1) and fade-out lights for driver's side footwell, ignition switch and door lock.	■	■	■
Lights for ashtray (1), cigarette lighter (1) and locking glovebox (1)	■	■	■
Vanity mirror in passenger's sun visor	■	■	■
Driver's seat adjusts for lumbar and thigh support	■	na	na
Reclining front bucket seats	■	■	■
Fold-down rear seat armrest	■	na	na
Split, fold-down rear seat backs	na	■	■
Seat belt tension reducer	■	na	na
Full interior cut-pile carpeting	■	■	■
Fully carpeted cargo area and lower door panels	■	■	■
Day/night rear view mirror	■	■	■
Full-length center console	■	■	■
Cassette storage area center console	na	■	○
Storage pockets in front doors and seatbacks (2)	■	■	■
Child-proof rear door locks (3)	■	■	■
Rear seat passenger assist grips	■	na	na
Combination door-pull armrests	■	■	■
Rear armrest storage area	na	■	■
Cargo tie-down straps	na	■	■
Cargo area cover	na	■	■
Flash-to-pass headlight control	■	na	na
Power steering	■	■	■
Cruise control	■	■	na
Tachometer	■	■	■
Digital quartz clock with display feature	■	■	■

+ 3-door only. *Available only on 5-door LS. **Integra's system doesn't include programmable function, twin antennas or remote controls. (1) Integra package limited to these lights. (2) Seatback pockets not available on Integra. (3) Not available on 3-door Integra models. (4) Legend includes 1met.

Accessories, materials, equipment, colors, models, specifications and availability are subject to change without notice. Colors may vary from those shown. ■ standard ○ optional na not available

At 207 lbs., Integra's engine is about half the weight of a cast-iron engine.





variable-density foam—soft in the seating areas, firm in the thigh and side bolsters. To keep the driver in place under all driving conditions.

FUNCTIONAL DESIGN WITH A GREAT FIGURE:
A CD OF ONLY 0.34.

Functional design today means aerodynamic efficiency. Integra's clean shape scores high marks with a 0.34 coefficient of drag.

STRUCTURAL INTEGRITY: HANDLING AND SAFETY BEGIN HERE.

Integra's unification of chassis and body substructure provides an extra rigid platform for engine and suspension mounting.

It also reduces the possibility of squeaks and rattles.

And best of all, the low weight and rigidity of the unit body pay off in handling that is precise and refreshingly responsive.

Yet, without sacrificing the luxuries of a solid, comfortably smooth ride.

Aerodynamic styling reduces wind noise, increases fuel mileage.

The Integra: an automobile conceived on the computer screen.

Every exterior detail was designed to lower aerodynamic resistance.

The twin sport mirrors. The flush window glass and door handles. And the absence of unnecessary trim.

without removing a hand from the wheel.

And the shift lever placement requires almost no reach at all.

Yet for all its control compactness, Integra doesn't crowd the driver. This environment was conceived to reduce driver stress. To add greater pleasure to driving.

THE INTEGRA OUTLOOK ON DRIVING PERFORMANCE.

Forward vision is exemplary, thanks to a sloping, low hoodline. Overall, the Integra's generous glass area grants excellent visibility through 310 degrees.

AN ERGONOMICALLY PRECISE DRIVER SUPPORT SYSTEM.

A driver's car wouldn't be complete without two snug, form-fitting bucket seats. And the Integra seats offer something new, in addition to rich upholstery and full-recline capability.

The cushion material is

accelerates in a straight line: its handling is predictable and controlled.

GAUGES AND CONTROLS ENGINEERED FOR EASY EYE-HAND COORDINATION.

The Integra cockpit is designed to fit the driver as precisely as a tailored suit.

Everything is where it should be. The steering column adjusts for the best wheel height. Large,

legible white-on-black analog instruments are straight ahead and clearly visible through the wheel whatever its position. One glance tells the driver what he needs to know.

Control stalks for lights and wipers are at the driver's fingertips, and operable

EQUAL-LENGTH HALFSHAFTS: REFINED FRONT-WHEEL DRIVE.

By equalizing the lengths of its halfshafts—joining the front wheels to the trans-axle—and by equalizing the angles of the joints at the ends of those shafts engineers virtually eliminated front wheel drive torque steer. The Integra, therefore



Regular trips to the salt bath tested Integra's corrosion resistance.



A new dealer network as responsive as the cars themselves.

Each Acura dealer has been carefully selected from a large number of qualified candidates. Seasoned professionals. Professionals who know their business and make it their business to know your car.

For an Acura automobile dealer nothing less than

Acura service network is available to help you.

To field your mechanical problems, an Acura Customer Assistance Center is accessible to you via a toll-free number if an Acura dealer is not close at hand.

And should any Acura technician need additional help, a team of engineers is available through a separate toll-free Tech Line.

A nationwide, computerized parts system helps to minimize repair time by rapidly locating any components not readily available. And shipping those parts is always prompt. In most cases, overnight. An efficient parts department: designed to eliminate customer inconvenience and unnecessary expense.

When you buy an Acura, you buy much more than a new car. You buy an entire support system, too—a system dedicated to keeping you behind the wheel.

THE JOY OF DRIVING: GUARANTEED.

Of course, the Tech Line engineers don't expect to receive many phone calls. Acura automobiles are designed to be strong, reliable and forgiving. For years.

As befitting any product built by Honda Motor Co., Acura automobiles are so reliable, all are backed by a 3-year, 36,000-mile warranty* that covers most everything—including spark plugs and light bulbs.

An Acura automobile is practically a care free automobile. Service intervals

are few and far between with oil and filter changes required only once every 7,500 miles. Corrosion protection is so extensive that sheetmetal is warranted against body rust-through for 36 months.

The home mechanic has also been acknowledged.

0360000

*Enjoy the Acura 3-year, 36,000-mile limited warranty.**

Spark plugs, filters, and essential fluids have been made accessible for easy self-servicing.

Your Acura dealer is also thoroughly dedicated to the exclusivity that belongs to the Acura name. For that reason, Acura automobiles are available only at Acura dealerships.

An ever growing body of qualified professionals totally dedicated to serving your driving needs—promptly, efficiently and courteously.

As an Acura owner, you belong to a club.

An exclusive club that is dedicated to preserving the pleasure of driving.

Become a member. Join the Acura team.



Dealer attention continues as you continue down the road. Wherever you may go. If an Acura dealer is not near, a backup system will find a qualified mechanic.

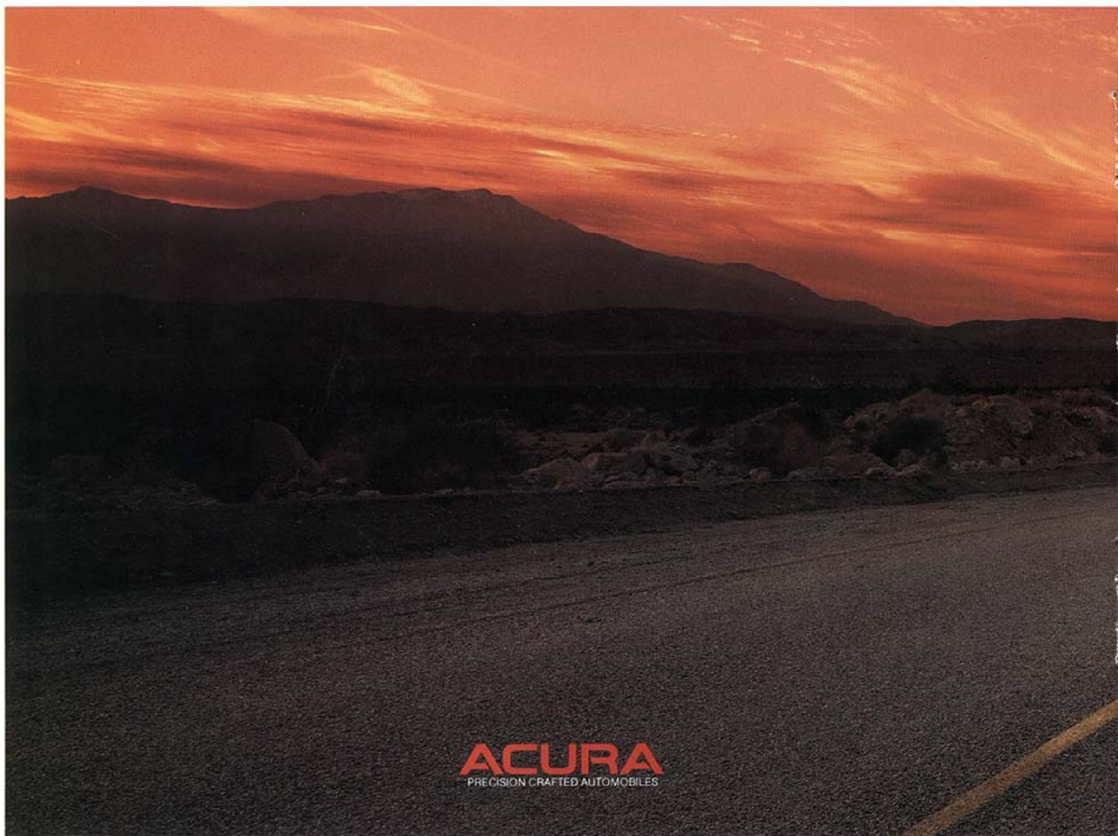


Exclusivity: Acura automobiles are available only at Acura dealerships.

ATTENTION THAT'S AVAILABLE MOST ANYWHERE YOU GO.

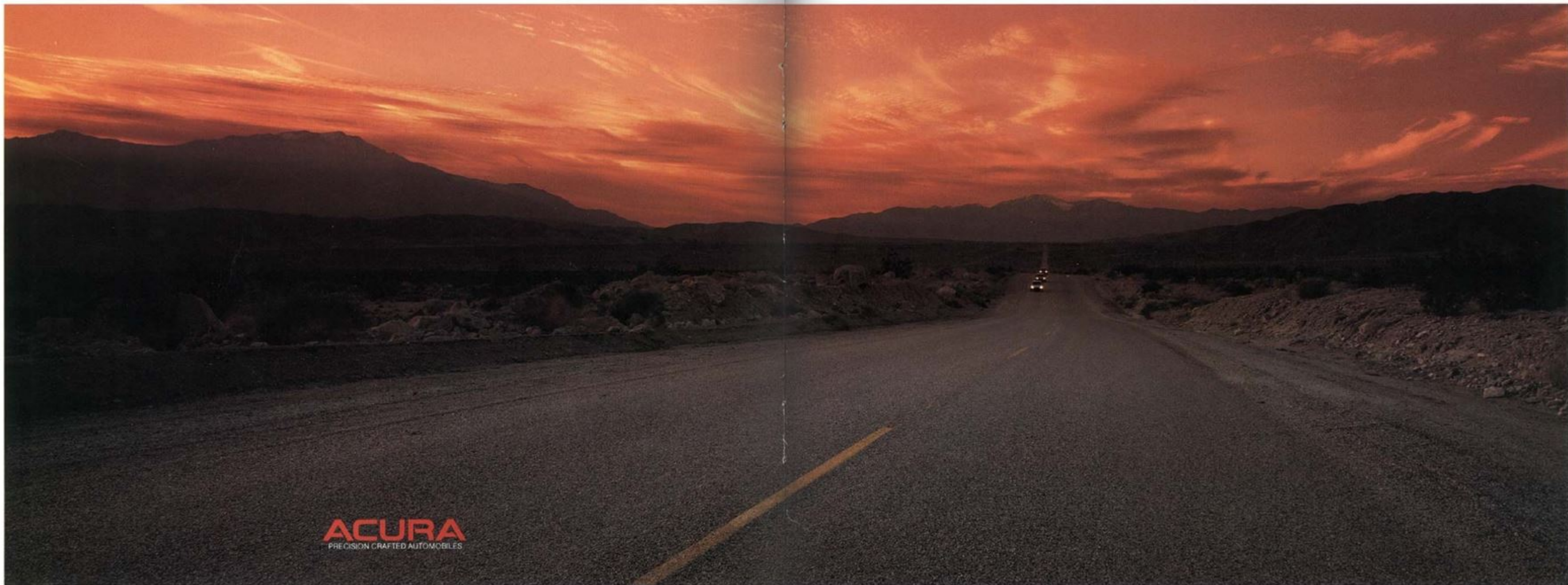
Should you wander very far from an Acura dealer, the

* See your Acura dealer for details.



ACURA
PRECISION CRAFTED AUTOMOBILES

ACURA LEGEND AND INTEGRA
PRECISION CRAFTED AUTOMOBILES



ACURA
PRECISION CRAFTED AUTOMOBILES