

Bentley Motors Limited,
Pym's Lane, Crewe,
Cheshire, CW1 3PL, England
www.bentleymotors.com



BENTLEY

MULSANNE





Contents.

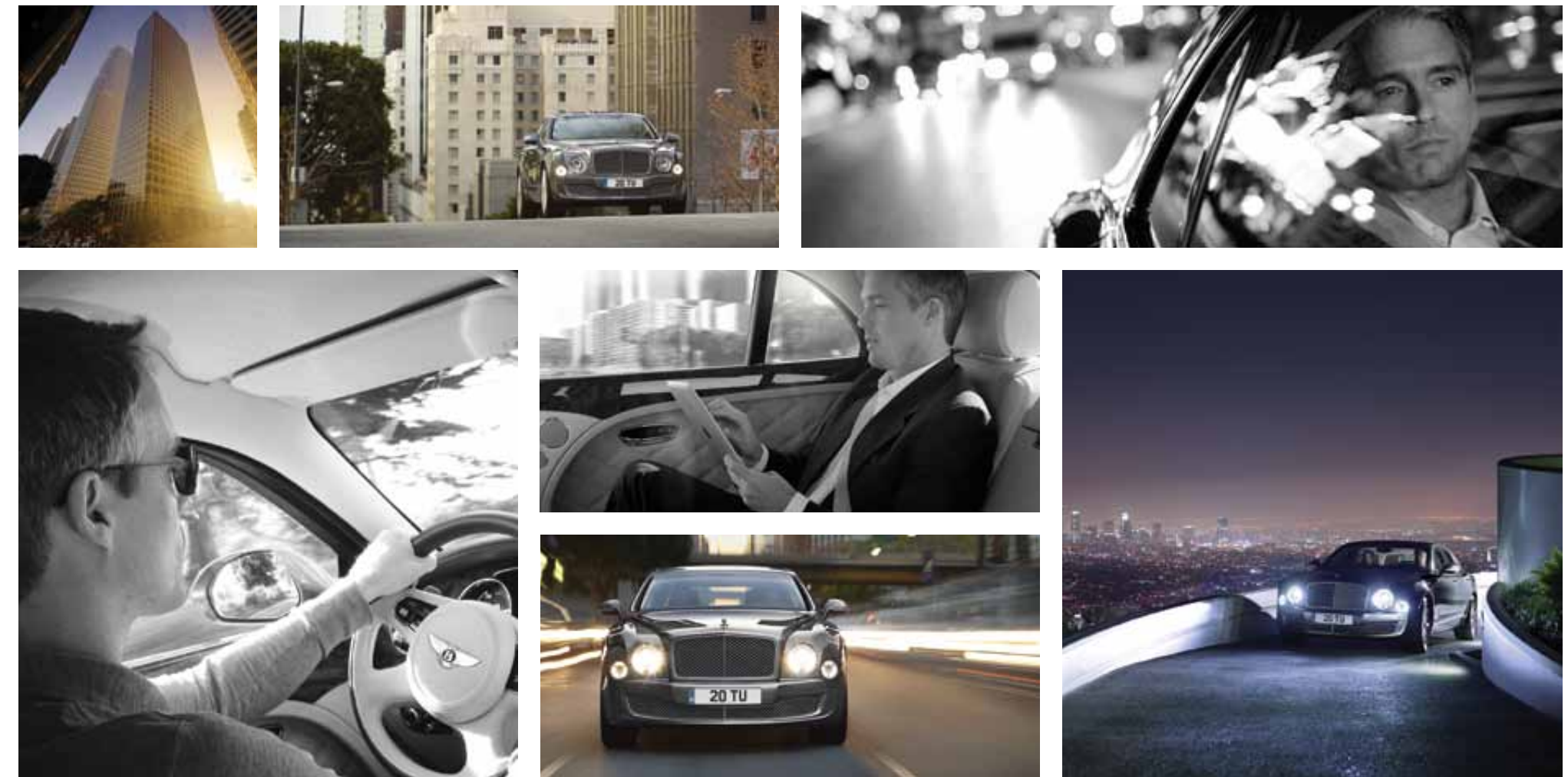
INTRODUCTION	6
DESIGN	14
PERFORMANCE	33
INTERIOR	39
IN-CAR TECHNOLOGY	51
INDIVIDUALITY	54
MULLINER	79
DESIGNERS' CHOICE	84
ACCESSORIES AND THE BENTLEY COLLECTION	92
OWNERSHIP	94
SPECIFICATION AND OPTIONS	96

The luxury of exhilaration.

Hand-built in Crewe to unparalleled standards, the Mulsanne represents the pinnacle of Bentley's design, craft and engineering skills. The latest in a long line of Bentley flagships, it is equally rewarding whether you relax and enjoy the comfort of its rear seats or experience the pleasure of driving. The 6.75-litre V8 engine that can waft the Mulsanne in near silence through city streets can also catapult the Bentley from rest to 60 miles an hour in just 5.1 seconds. Where circumstances permit, its inexorable wave of power can be ridden all the way up to an astonishing 184 miles an hour.

Just as remarkable is the Mulsanne's chassis. The engineers at Bentley have created a 4-door flagship of exceptional agility. Its supple ride, linearity of control and precision of feedback invites you to explore the performance at your disposal. Yet travel in the rear compartment and the Bentley's silent, smooth progress creates an oasis of calm to soothe away the stress of a busy day. Whether you drive or are driven, there's no more satisfying way to travel. Bespoke luxury and sensational performance, in one remarkable car.







Different era. Same inspiration.



Timeless presence.



“I have always wanted to make a dead silent 100mph car, and I think that we have done it.” With those words, our founder, W.O. Bentley, revealed his twin obsessions of refinement and power. The car he described, the Bentley 8-litre of 1930, was then the largest-engined car offered in Britain, a Grand Tourer of staggering performance for its era. Subsequent flagship Bentleys, from the coach-built Derby Bentleys of the 1930s to the V8-engined S2 of 1959, continued to develop Bentley’s distinctive elegance of line, effortless power and bespoke handcraftsmanship.

More than eight decades later, the Mulsanne is the spiritual inheritor of W.O.’s vision, representing the pinnacle of Bentley luxury, refinement and power. Created at Bentley’s factory in Crewe, it evidently belongs to an unbroken design tradition, yet it offers a fresh and compelling vision of Bentley grand touring for the 21st century. It is the most exclusive Bentley made today, with the largest engine capacity, the highest torque figure and some 500 person hours being lavished on each one. It is, like all its predecessors, the ultimate in grand touring: a Bentley of timeless presence, created using the latest in technology.



CRICKLEWOOD



DERBY



R-TYPE



S SERIES



T SERIES



TURBO R



CONTINENTAL R



ARNAGE

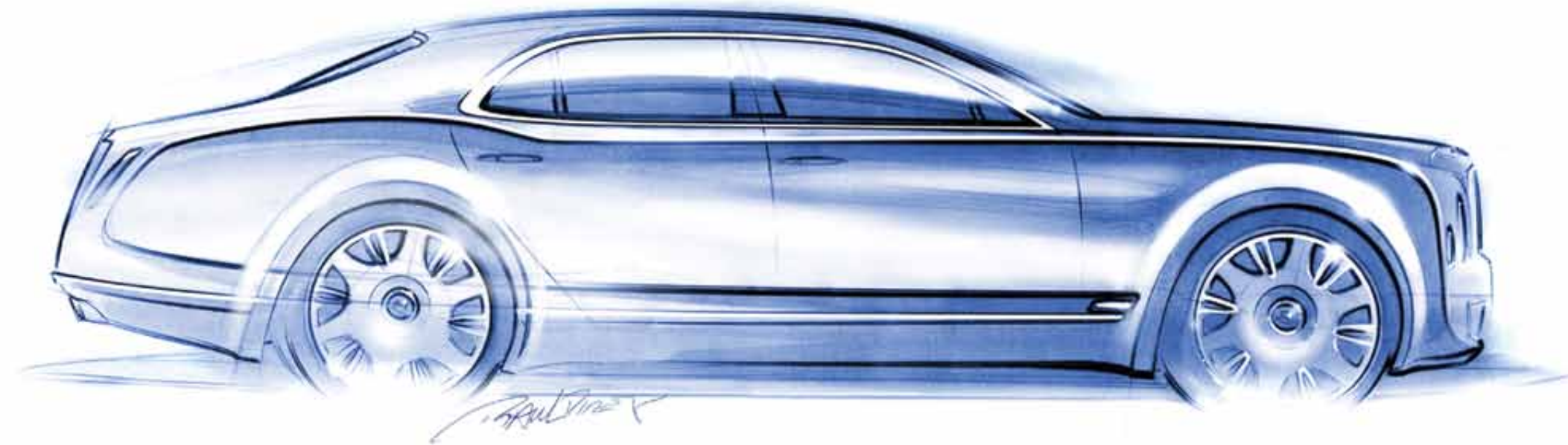


MULSANNE



DESIGN

Even when still, it moves you.







Crewe's design team talk of the Bentley powerline. It's their word for the sharply defined crease that swoops upwards from the short front overhang before curving around the front wheel and spearing back along the waistline of the car. Once past the driver's door it meets the haunch, the muscular curve that defines the rear wing, before gently curving back towards the front wing vent.

The powerline is instantly recognisable from Bentley's design DNA and is central to the way that the design team defines Bentleyness. You can trace it back to the 1952

R-Type Continental or even further, yet each generation brings a leaner, smoother, more athletic shaping to the form. In the Mulsanne it expresses a body that's spacious, yet strong; dominant, yet graceful. Even when the car is at rest, the powerline conveys movement. Together with the high waistline and swept-back windscreen, the long bonnet, proud upright matrix grille and the coupé-like D-pillar, it creates an impression of immense power, strength and endurance. An impression confirmed the first time you take the wheel.

A very modern classic.



The large, inset headlamps of the Bentley Mulsanne are evidence of a continuous design evolution, all the way back to the original 3-litre. Yet no Bentley before has ever featured a ring of bright LED lamps around the central projector beam. And no previous Bentley has featured a front wing in superformed aluminium, a manufacturing technology that gives Bentley designers the freedom to create a single, sinuous panel of metal without seams or joins. Thus the Mulsanne both respects Bentley's past identity and reinvents it for the future, as part of a constant process of design evolution.

Run your hand down the D-pillar – the rearmost pillar of the cabin – and onto the rear wing and it will encounter

no seam or sharp change of direction. That, too, is evidence of a long partnership between designer and craftsman that can only exist at a place like Crewe. Under the many layers of primer, paint and clear lacquer there's a thin line of exquisitely-brazed brass, joining the two panels. You will never find such a feature on a mass-produced car, because the technique cannot be entrusted to a robot. Achieving it takes the skill of a craftsman with years of experience.

Skills of hand and eye, and the very latest in panel forming technology. You will find both in the Mulsanne: a glorious fusion of extremes and a very modern classic.



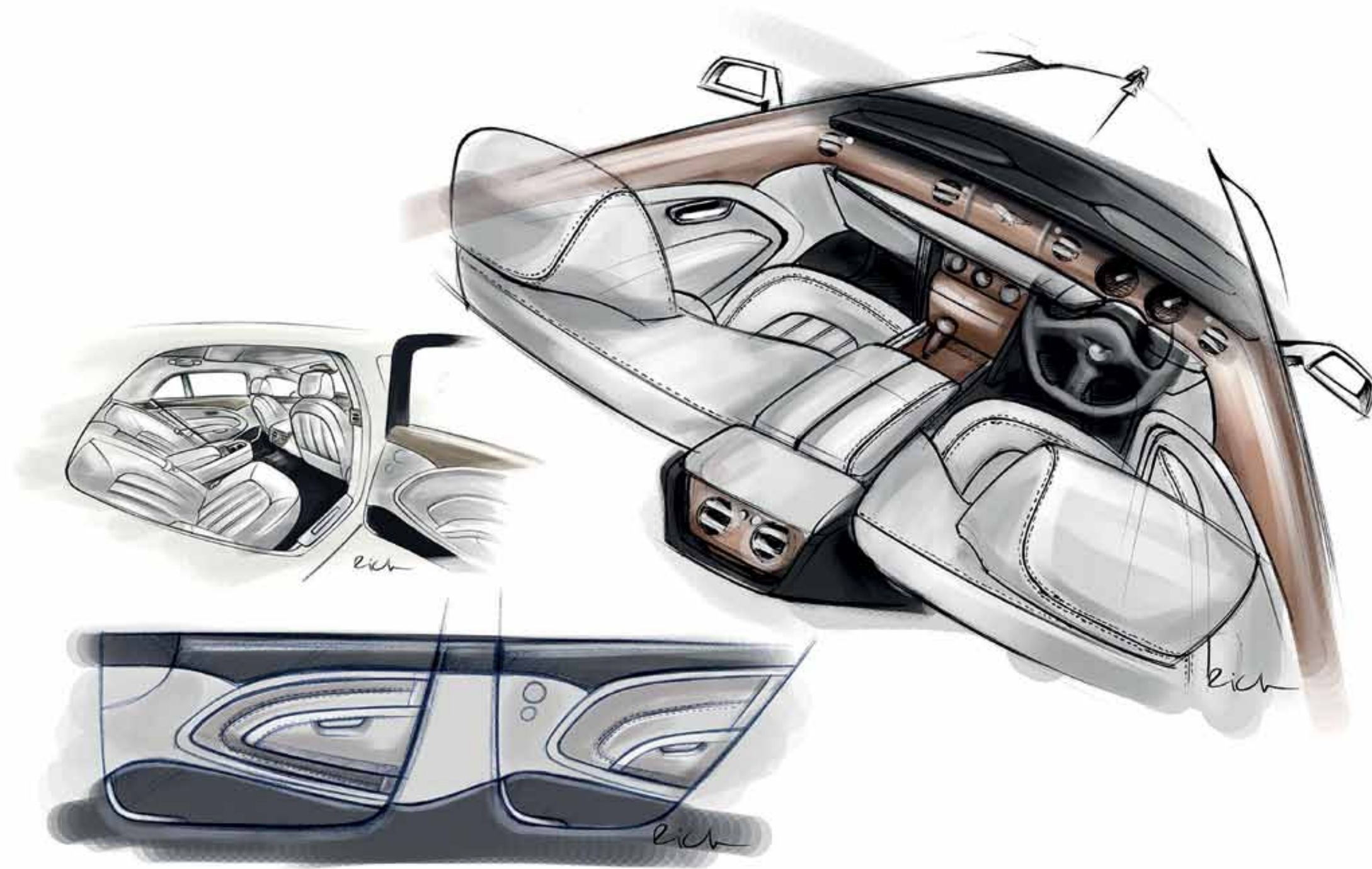
Bentley interior designers think outside the box.



From jewellery to architecture, furniture to fashion, Bentley designers draw their inspiration from many sources. So, while wood, leather and polished metal have a long pedigree at Bentley, the innovative way that they are used in the interior of the Mulsanne stretches the capabilities of our engineers and craftsmen to the full. Those flowing, organic lines unite exterior with interior, showcasing Crewe's craftsmanship and creating an ambience of cossetting luxury. Wherever your eyes can see or fingers feel, there's uncompromising honesty in the use of materials. What looks like polished steel is polished steel. The wood veneer displays its natural

colour, not some artificial approximation. Every interior surface that could be leather is leather. What you see is truly what you get.

Grasp the wheel, the result of 15 hours of patient, painstaking hand-stitching. Note, with a smile, the inverted dials for engine speed and road speed directly ahead of you. As a bespoke Bentley, the interior of the Mulsanne is both built around you and crafted for you. The gleam of metal, glow of wood and soft tactility of leather create an unmistakable sense of well-being. This is no mere car interior; it's a work of art that you can drive.



Shaped by air, for a car built to fly.

Those precisely-defined creases on the front wing of the Bentley Mulsanne cannot be created by a conventional press. Instead, Bentley's engineering and production teams collaborated to use superforming technology, in which sheets of 5083 grade aluminium are heated to 500°C before being shaped and drawn onto a single surface tool by air pressure to achieve the designer's vision.

It's a metaphor for the way the entire car is made. Without compromise. The Mulsanne's body is made at Crewe in the most advanced 'body in white' low-volume workshop in the

world. Its construction employs a combination of traditional craft and state-of-the-art technologies, including robotised spot welding, superforming, riveting and hand brazing to create a body of immense strength and precise, even panel gaps. It takes some 125 hours to create one Mulsanne bodyshell, after which it will be protected, primed, painted, hand-sanded, lacquered and polished as many times as it takes to create a finish of sumptuous depth and fidelity. Thus, the Mulsanne's elegant, superformed curves gain a cloak of mirror-finish paint that reflects the work, and the care, taken in their creation.







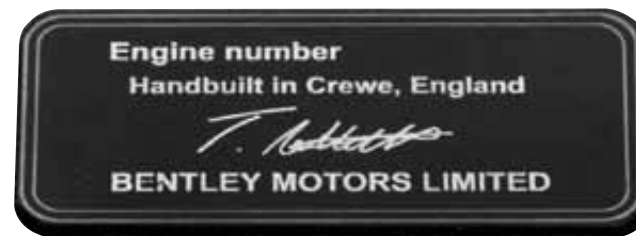
Le Mans Circuit

● Mulsanne Corner

A name from racing legend.

It's often thought that Mulsanne is the name of a straight at the Le Mans circuit where Bentley made its reputation. Not so, say purists. The straight is Hunaudières; it is the corner at the end of the long, high-speed straight, the one that imposes the hardest demands on brakes, tyres and suspension, hour after hour, which is called Mulsanne. If so, it's entirely appropriate

that Bentley's bespoke Grand Tourer should be named after it. Because the Mulsanne is not only an immensely fast car. It is also a car of supreme poise, employing massive 400mm front brake discs (370mm at the rear) to bring the power of the 512PS engine under instant control. A Bentley to be enjoyed in the curves, as well as down the straights.



Engine plate bearing the signature of the engine builder

Six and three-quarter litres. A capacity for wonder.

Six and three-quarter litres. There's something pleasingly traditional about the use of the fraction, rather than the everyday metric 6.75. But that's the only nod to the past evident in the Mulsanne's V8, which features cam phasing and variable displacement to deliver exemplary refinement, torque delivery and fuel efficiency. Complementing these advanced technologies, lightweight pistons, connecting rods and a forged crankshaft further improve efficiency and the speed of throttle response. Individual sets of pistons and connecting rods are matched in weight for each engine, to achieve the last word in silken refinement. All these components are assembled by hand, with the name of the individual engine builder proudly displayed on the engine's

cam covers. The result is a remarkable powerplant that delivers 512PS and 1020Nm of torque, yet one that can also seamlessly, silently switch to 4-cylinder operation when cruising.

When compared with its immediate predecessor, the Mulsanne's V8 delivers more power and torque together with a 15 per cent improvement in fuel economy. It's an engine that complies with the latest emissions requirements, yet provides a sensation of boundless power when the throttle pedal is depressed. Coupled with its advanced 8-speed automatic transmission, the Mulsanne V8 can switch from whisper-quiet progress to deep-throated acceleration in a split second. Or perhaps that should be... in a fraction.



An impressive turn of speed. An inspiring speed of turn.



It may be a spacious, luxuriously appointed 4-door flagship, but the Bentley Mulsanne is capable of an impressive turn of speed. 60 miles an hour in just 5.1 seconds is the kind of performance that you might expect of a powerful 2-seater, yet the Mulsanne offers supreme luxury for front and rear seat passengers alike. And the enjoyment doesn't have to end when the straight does, thanks to the careful development work of Bentley's chassis engineers and test drivers.

The Mulsanne's multi-link rear suspension was developed to handle the extreme torque of the powertrain, with toe and brake reaction control. At the front, there's a double-wishbone set-up, while the all-round air suspension offers three driver-selectable settings. Continuous Damping Control reconciles the conflicting requirements of roll resistance in the corners and a supple, cossetting ride, and should you choose the Mulliner Driving Specification you can explore the full

sporting potential of the revised Sport settings. However, even in Comfort or Bentley settings, the Mulsanne's poise, balance and grip make it as confidence-inspiring as it is exhilarating. With 512PS, the Mulsanne is one of the most powerful Bentleys ever made. Fortunately, Bentley's chassis engineers remain ahead of the curve.



Express your inner feelings.



Once, every car was crafted to the measure of its owner. At Crewe, the Mulsanne still is. More than 500 hours are lavished on creating a Bentley Grand Tourer that exactly reflects your tastes. Nowhere is that more evident than in the Mulsanne’s interior. From the Naim for Bentley audiophile system to the colour of the stitching, the cabin of your Mulsanne is your personal domain. And if you would like a bottle cooler between the rear seats, complete with LED illumination and bespoke champagne flutes, that too can be

accomplished in this most individual of all Bentleys. In truth, the possible permutations of hide colours, colour splits, wood veneers and carpet stretch to near infinity. That is the true meaning of bespoke, as seen by the designers and craftspeople of Bentley. A Bentley made by a dedicated set of individuals, to the commission of one individual. The result: a car beyond compare. And a cabin to express your innermost values.

Where craftsmanship becomes art.

The outside world falls silent. A moment to savour. A ring of polished wood envelops the cabin; ahead, the inverted dial needles are evidence that the Mulsanne belongs to a long tradition of Bentley Grand Tourers. Meanwhile, the subtle

scent of leather reminds you that Bentley retains traditional curing methods for its upholstery hides. Dozens of skilled men and women have spent around 170 hours to create this unique ambience. Now it is yours to enjoy.



*Some parts of a Mulsanne are
eighty years in the making.*

Step into the cabin of the Mulsanne, allow the door's soft-close power latch to shut out the sounds of the street, and look around. The burr walnut that encircles you in the Mulsanne's continuous 'ring of wood' started life many years ago in California, when W.O. Bentley's Speed Sixes were still dominating pre-war Brooklands. Harvested after 80 years or more, when the tree has finished its productive life, the precious root ball with its rare fungus is shaved into

leaves 0.6mm thick, stacked, matured and kept in carefully climate-controlled storage chambers. It takes a full set of 24 leaves from the same root ball, with their mirror-image recurring pattern, to make the Mulsanne's cabin. To use excessive heat or bleaching upon such a precious commodity would be near-sacrilege; instead, Bentley uses a veneering process that takes up to five weeks for each car, but preserves the vitality of colour and grain intact. And while the burr

walnut, chestnut, vavona, ash or maple is completing its long journey to the workshops of Crewe, the 17 hides required to make the upholstery for each Mulsanne have their own journey to make from the high pastures of northern Europe. Tanned using a traditional process that preserves their natural aroma, they bring the sensuous tactility of a natural material to the interior of the grand Bentley. From the best of the world, to the best in the world.









Escape to a different world. Every day.



Technology as intuitive as it is discreet.

Whether you drive or ride in the Mulsanne, you have an impressive range of information, entertainment and control functions at your fingertips. Yet Bentley's designers have been careful to avoid crowding the fascia and consoles with switches. Instead, they've created an interior that's wonderfully relaxing, simply because it doesn't clamour for your attention. The infotainment screen, for example, can be concealed behind a veneered panel when it's not required for route navigation, rear camera view or other control functions. Your iPod, BlackBerry or MP3 player can be connected to the in-car audio system whilst remaining out of sight in a hide-lined drawer. Meanwhile, hidden in the glovebox is the heart of the infotainment system, with a powerful hard drive that drives the satellite navigation, audio and video files, personal

data, telephone and Bluetooth connectivity. Voice control means that you can make and receive calls or program the navigation system without having to take your hands off the wheel or your attention from the road. The Mulsanne's specification also includes a 14-speaker audio system with Digital Signal Processing (DSP) and 6-CD autochanger, which, together with the Bentley's acoustic glazing and sound proofing, creates an exceptional audio experience. Audiophiles can also opt for the Naim for Bentley system. This meeting of two world-leading British luxury brands offers the Mulsanne owner the option of 2,200 watts of rich, pure sound, with 20 custom-made speakers and eight DSP modes covering every audio ambience from rock concert to symphony orchestra.

The experience of owning a Bentley Mulsanne is a celebration of bespoke choice, and that's as true of the technology as it is of your selection of upholstery colour. The personalised keyless entry system allows you to set a number of pre-programmed configurations. Once set, it automatically selects each driver's chosen radio stations, phone book, steering column, seat belt and seat settings (including front and rear ventilation and massage modes). It can even store your preset preference for the electrically operated rear-seat blinds. Once it is programmed, simply approach your Mulsanne, reach to open the door handle and it will be expecting you. Thus, even before the journey starts, you will be welcomed to the world of Bentley technology: discreet, faultless and impressively understated.



Mulsanne owners have a clear sense of direction.
And so does their Bentley.



Once upon a time, navigating your way around an unfamiliar city required the willing co-operation of a passenger – preferably one able to decipher maps and issue clear, timely instructions. Thankfully, those days and the potential for in-car discord are over when you're driving the Bentley Mulsanne.

Concealed until needed beneath an electrically-powered, veneered panel, the 8" information screen of the Mulsanne can clearly and precisely direct you to your destination, however distant. A Bentley's grand touring credentials mean that your journey could cover several countries in one bound; fortunately, the 60GB hard disc drive that retains the Mulsanne's mapping data holds a continent's-worth of mapping information readily accessible at all times. Input an address, a 7-digit postcode or name of one of the contacts

in your phone and it will locate the precise spot, navigating you with real-time traffic information (available in many world territories) to steer you around the source of delays. For clarity, you can choose between day view, night view, 3D mapping and city view modes on the screen.

But what if the passenger actively wants to participate in the navigation? In the latest Mulsanne models, that too is possible. Choose the rear seat entertainment package, which includes twin 8" screens on the rear of the headrests, and in-between movies, TV or games, rear seat passengers will be able to watch your progress on the mapping as well as searching for and inputting new destinations on the system. Travelling in the Mulsanne, even back seat drivers can be harmoniously accommodated.





Individuality.

As the owner of a hand-built Bentley, you might expect to be offered a wide choice of exterior colours, and you will be. The same is true of the veneers that create the Mulsanne's 'ring of wood', or the hides that make the interior of the Mulsanne such a sensory delight. But consider too that you can also choose between seat piping, contrast stitching, diamond quilting or cross-stitching. Make your choice of wood veneer, and you'll be offered the choice of cross-banding, emblem inlay or picture frame-style inlay. Rapidly, you will begin to see why Bentley is confident that there will never be another car quite like your Mulsanne. If the many permutations displayed by Bentley's online configurator leave you spoilt for choice, the experts at your Bentley dealership, or the colour and trim team at Crewe, will be happy to help you make your decision. It's your Bentley, in every sense.





1	Violette	8	Passion Pink	15	Umbrian Red •	22	Amber	29	Special Magnolia (Pearlescent)	36	Ice	43	Porcelain •	50	Venusian Grey •	57	Arabica	64	Light Onyx	71	Light Emerald	78	Aurora	85	Silverlake	92	Oxford Blue (Solid)	99	Black Sapphire •
2	Grey Violet •	9	Rubino Red	16	St. James' Red (Pearlescent)	23	Gazelle •	30	Breeze	37	Glacier White (Solid) •	44	Moonbeam •	51	Light Tudor Grey	58	Cypress	65	Brewster Green (Solid) •	72	Alpine Green •	79	Neptune	86	Sequin Blue	93	Titan Grey •	100	Royal Ebony
3	Pale Velvet	10	Sunset	17	St. James' Red (Solid) •	24	Bronze •	31	Extreme Silver	38	White Sand	45	Hallmark	52	Burnt Oak •	59	Dark Grey Satin	66	Barnato (Solid)	73	Aquamarine	80	Kingfisher	87	Peacock	94	Windsor Blue •		
4	Heather	11	Light Claret	18	Orange Flame	25	Sunburst Gold	32	Special Magnolia	39	Silver Frost	46	Silver Tempest	53	Sandstone	60	Storm Grey	67	British Racing Green 4	74	Spruce	81	Pale Sapphire	88	Thunder	95	Dark Sapphire •		
5	Black Velvet •	12	Burgundy •	21	Havana	26	Continental Yellow	33	Magnolia •	40	Ghost White	47	Arctica (Solid)	54	Granite •	61	Brodgar •	68	Pale Emerald	75	Glacier Blue (Solid)	82	Fountain Blue •	89	Blue Crystal	96	Onyx •		
6	Azure Purple	13	Claret	20	Light Havana	27	Sand	34	Silver Storm •	41	White Satin	48	Dove Grey	55	Tungsten	62	Cumbrian Green	69	Aegean Blue	76	Light Windsor Blue	83	Moroccan Blue •	90	Light Sapphire	97	Beluga (Solid) •		
7	Magenta	14	Dragon Red	21	Burnt Orange	28	Old English White	35	Citric	42	Light Grey Satin	49	Light Gazelle	56	Pale Brodgar	63	Midnight Emerald •	70	Verdant	77	Apple Green	84	Meteor •	91	Anthracite	98	Black Crystal		

- Standard colour

All other colours available as a cost option

Please note, the colours reproduced are for representation purposes only and therefore vary slightly from the actual vehicle.

A spectrum of choice.

With over 100 colours to select from, the Bentley Mulsanne's paint range allows you to make the subtlest of distinctions in your chosen shade. Decide that you want your Mulsanne to be painted a grey metallic, and you'll be shown Dove Grey, Venusian Grey and Light Tudor Grey among 12 other metallic shades in the silver spectrum. Even black, that most absolute of colours, comes in nine subtle variations on the Mulsanne colour palette. Thoughtfully, the colour and trim team at Crewe has divided the choice up into complementary shades, helping to make choosing almost as much of a pleasure as taking delivery of the finished car.

Inspiration can arrive out of the blue.

They thrive on challenge at the Crewe paintshop. Solid, metallic, pearlescent and satin paints each pose a test to the skill of the craftsmen who work there. And although the bare metal body of the Mulsanne arrives in the paint shop via automated overhead gantries, having passed through a series of immersion tanks to achieve a hard, corrosion-proof primer finish, everything that happens thereafter is down to the skills of human hand and eye.

From bare shell to the final Bentley mirror finish will take around 86 hours of careful concentration; colour coats are applied by hand, while the lacquer coats are hand-flatted and polished to a flawless shine. No matter how long a process takes, it has to be right.

With over 100 shades in the Mulsanne colour palette, and the option of duo-tone paint finishes, you might think that every customer's needs could be met from the range. But for some customers, there's an elusive colour tone that requires a bespoke paint. In the past, Bentley's paint shop has been asked to match a shade of nail varnish, a toothbrush, a racing stable livery and, on one memorable occasion, a precise shade of Kingfisher Blue paired with Ghost White for a pair of contrasting, duo-tone Mulsannes. They have done so readily. So if you'd like to let your imagination take wing, be our guest. For the Bentley paint team, it's all in a day's work.





21" CLASSIC ALLOY WHEEL - PAINTED



20" MULSANNE ALLOY WHEEL - PAINTED



21" 2-PIECE 5-SPOKE ALLOY WHEEL - PAINTED

21" MULLINER DRIVING SPECIFICATION
ALLOY WHEEL - PAINTED

21" CLASSIC ALLOY WHEEL - POLISHED



20" MULSANNE ALLOY WHEEL - CHROMED



21" 2-PIECE 5-SPOKE ALLOY WHEEL - POLISHED

21" MULLINER DRIVING SPECIFICATION
ALLOY WHEEL - POLISHED

Wheel options.

Your choice of wheels makes a dramatic difference to the visual impact of the Mulsanne, and a more subtle one to the ride. The 20" wheel diameter speaks to the elegant side of the Mulsanne, while the 21" wheels are sportier in character.

But the difference is subtle, and the choice is a matter of personal preference. All four wheel styles are available either in painted finish or highly polished, and are designed in the Bentley design studio at Crewe to harmonise with

the Mulsanne's proportions and sweeping lines. For full all-weather capability, winter compound tyres are available from your Bentley dealership.

*A reflection of
impeccable heritage.*



It takes 80 years for the burr root ball of a walnut tree to grow to perfection. And just nine weeks in the Bentley wood shop at Crewe for it to achieve immortality.



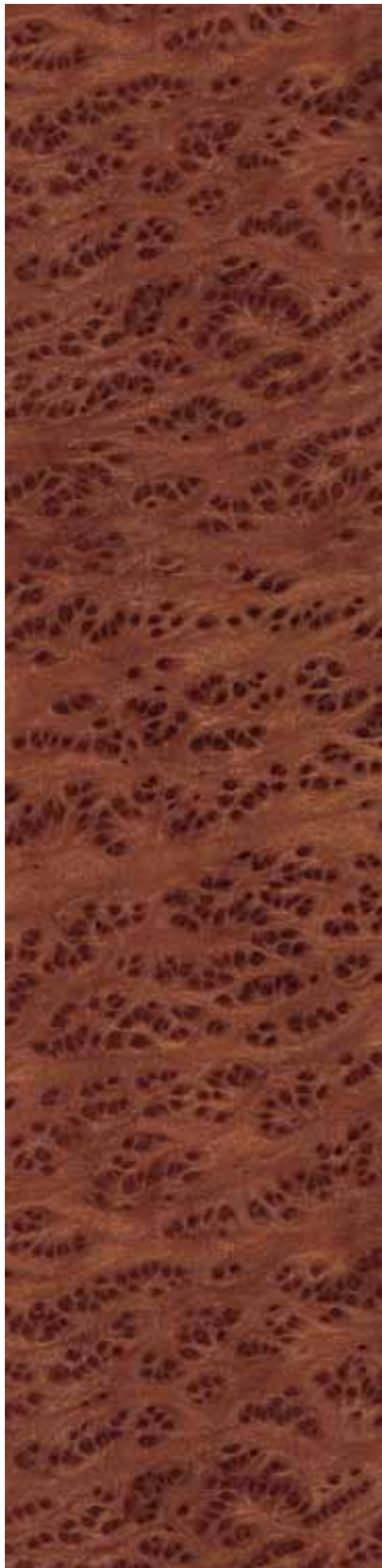
Birds Eye Maple



Olive Ash



Chestnut



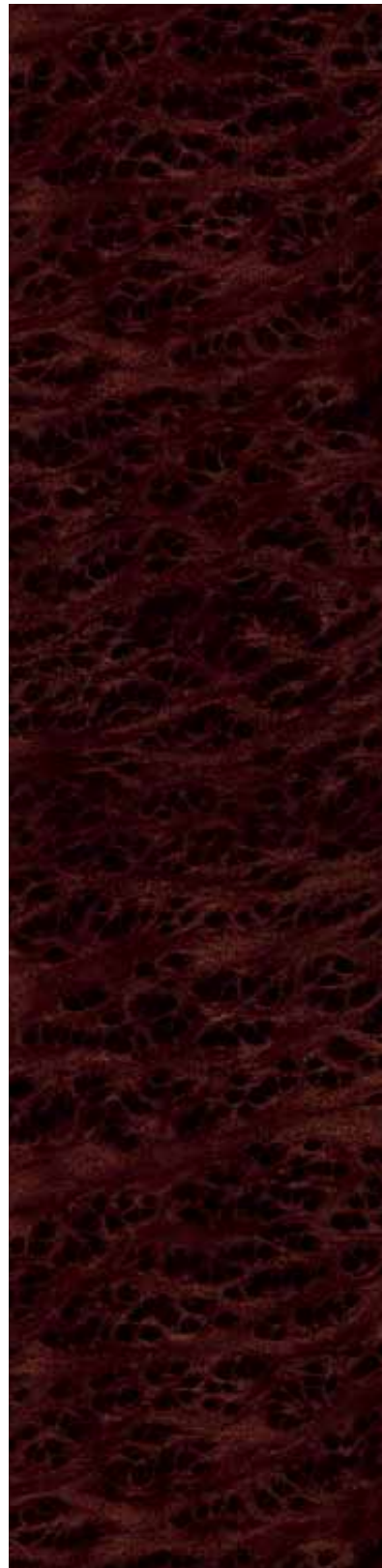
Vavona



Sapelli Pommele



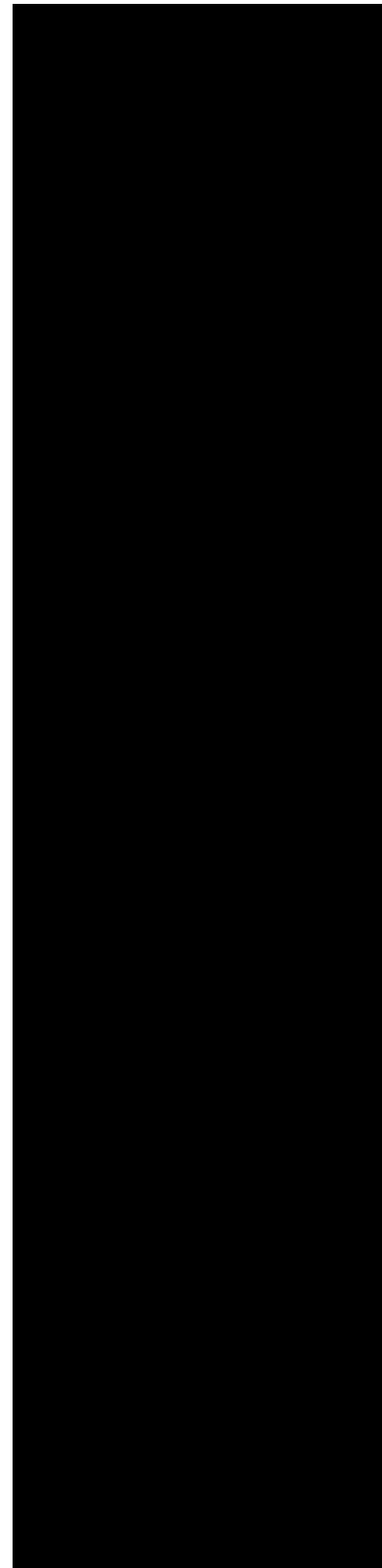
Burr Walnut



Dark Stained Vavona



Dark Stained Burr Walnut



Piano Black

Veneers.



For Bentley, a gnat bite is no minor irritation.

The first time you sit in a Bentley Mulsanne, it is the sight, touch and scent of the leather upholstery that conveys the strongest sensation of handcrafted luxury. Bentley's expertise with leather is unsurpassed and its quality standards uncompromising; in the company's workshops at Crewe, a hide can be rejected for something as insignificant as an insect bite. That's why Bentley insists on sourcing the supple, A-grade leather for its upholstery from northern European herds grazing at higher altitudes, where disfiguring bites and marks are less prevalent. Before it is delivered to Crewe, the leather is put through a complex, traditional tanning process to create a rich, mature leather aroma, evoking that of vintage Bentleys. Each skin is carefully pre-tensioned and examined, for Bentley refuses to employ surface embossing

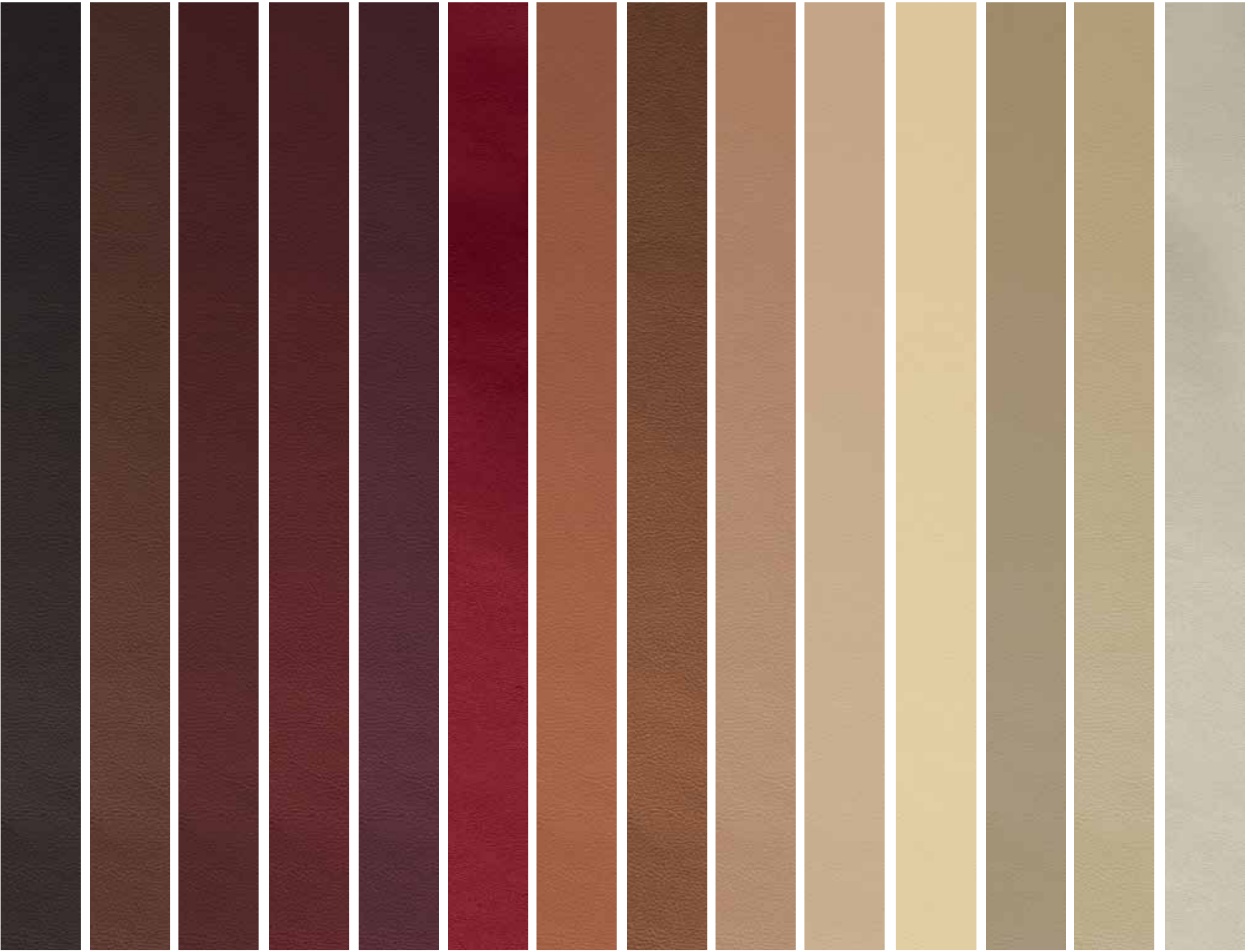
to disguise imperfections. Once checked, and with each tiny blemish identified using ultra-violet marking tape, the hides are expertly laser cut so that the sections that have the greatest amount of natural elasticity are used for surfaces such as the seats, rather than piping or the flatter surface of a door insert. All stowage compartments, including the iPod drawer, glovebox and luggage compartment, are leather-lined, while the creation of the hand-sewn leather rim around the Mulsanne's steering wheel takes two days of intense, expert concentration.

When you commission your Mulsanne, you'll be offered a broad palette of 25 hide colours, all of which are designed to complement the choice of exterior colours. These colours may be specified in single-tone or duo-tone combinations

in four different colour splits, so you can choose not simply the colour scheme but also the mood of the interior, from traditional to contemporary and from elegant to sporty. The decision made, you will also be offered the choice of seat piping, contrast stitching or cross-stitching, as well as the recently-introduced perforated diamond quilting offered as part of the Mulliner Driving Specification.

Many Bentley customers take the opportunity to visit Crewe to see the painstaking craftsmanship that goes into the creation of each Mulsanne for themselves. Should you make the trip, make sure to meet the craftsmen and women of the leather workshop. Every time you drive your Mulsanne in the years to come, you'll be touched by their expertise.





Burnt Oak Cognac Redwood Fireglow Burgundy Hotspur Newmarket Tan Saddle Autumn Twine Magnolia Cashew Shortbread Linen



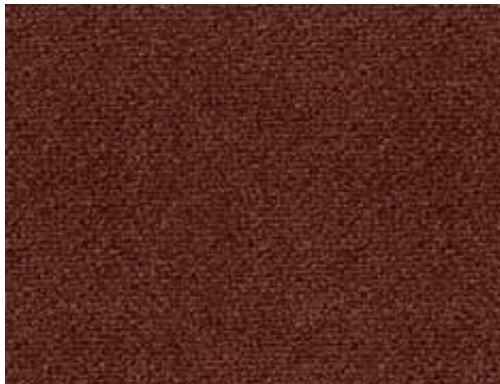
Portland Stratos Savannah Cumbrian Green Porpoise Anthracite French Navy Imperial Blue Windsor Blue Highland Hare Beluga

INDIVIDUALITY

Leathers.



Burnt Oak



Redwood



Autumn



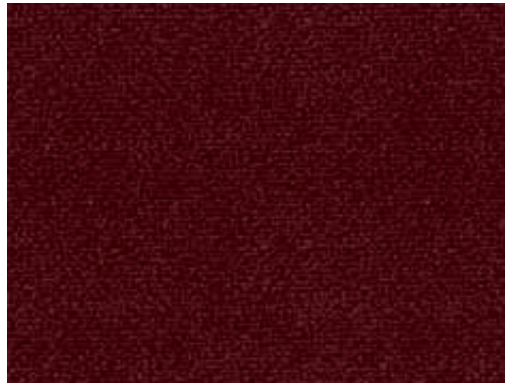
Savannah



Dark Porpoise



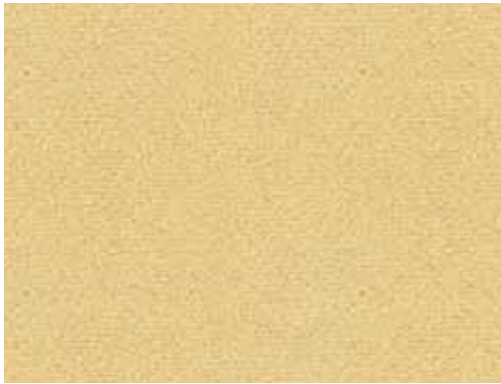
Highland Hare



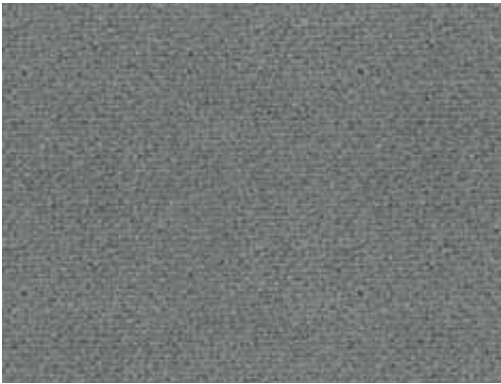
Dark Fireglow



Newmarket Tan



Dark Magnolia



Stratos



Windsor Blue



Beluga



Burgundy



Dark Tan



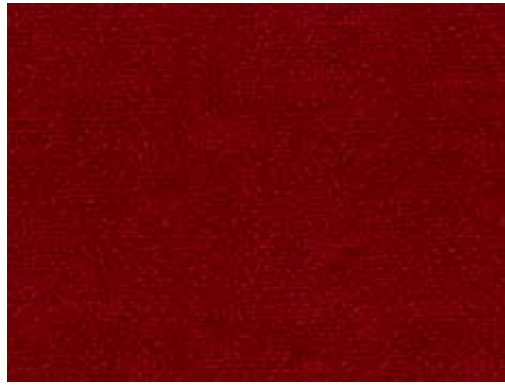
Portland



Cumbrian Green



Imperial Blue



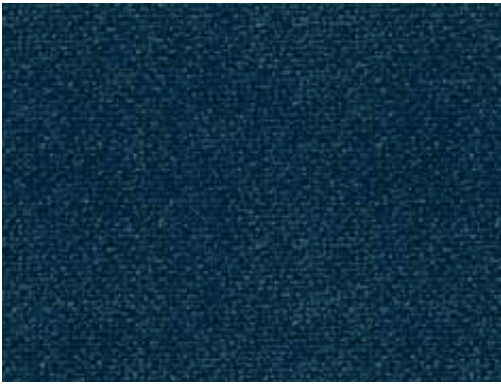
Dark Hotspur



Dark Twine



Cashew



French Navy



Anthracite

Carpets and Seat belts.

The Bentley colour and trim team’s attention to detail is demonstrated by the wide selection of colours for carpets and seat belts, which you can match to your chosen shade of hide from the 25 available colours. Belt colours are made to match that of the main hide colour, and even the seat belt buckles are colour-matched. Carpets too can be matched or contrasted with the hide colours, with a colour palette unique to Mulsanne, containing dark, rich carpets to perfectly complement the hides. A deeper-pile Wilton carpet was developed exclusively for Mulsanne, with a greater stitch rate to give the best possible sensation of depth and luxury. The carpet is flat cut, leather bound and fitted with stainless steel overmat fasteners.

Optional specifications. A treasure trove of temptation.

From veneered picnic tables with contemporary cross-banding to a veneered iPod drawer, and from inlaid Bentley wings to a Flying 'B' mascot, you'll find many temptations in the optional specification pages at the back of this book. For the latest

Mulsanne models, the tilting glass sunroof brings a welcome touch of brightness on dull days and features an Alcantara blind matched to the hide upholstery. As ever, your Bentley dealer representative will be happy to explain each feature in detail.



One of the Mulsanne's cooler options.

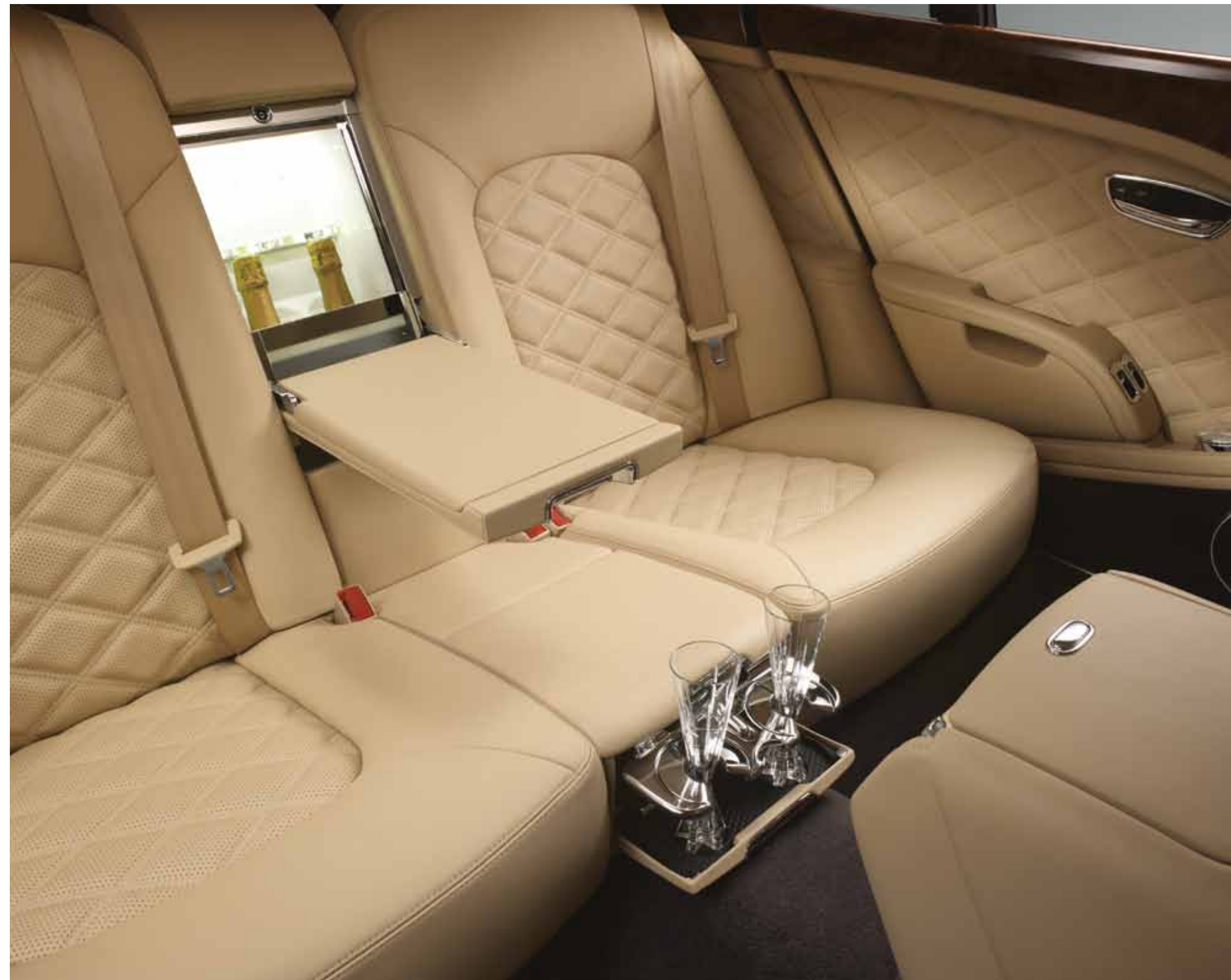
There is no such thing as a standard specification Mulsanne. There are, simply, hundreds of possible specifications, and one of them will be yours. From duo-tone paint, or satin finish paint, to coachlines (thin or thick, single or double) the choices extend to complementary hide colours, and if so, which of the four available colour splits you prefer. And that's before you start to consider piping, stitching, wood veneers, marquetry, cross-banding, alloy wheels or even the selection of a Winged 'B' bonnet mascot. It could be a

daunting prospect, but fortunately Bentley dealers and the commissioning team at Crewe are skilled in helping owners to find their ideal specification among the plethora of choice.

What, then, can be termed 'extra' for such an extensively equipped car? Simply, Bentley recognises that some owners require features that others do not. The optional bottle cooler, for example, holds two champagne bottles in a canted position (so that a half-full bottle can be placed there without spillage). Its contemporary design with a powered, frosted glass cover

and white LED lighting is complemented by the champagne flutes, designed for Mulsanne by David Redman of London and inspired by the 5-spoke Mulsanne alloy wheel design.

You may find such a feature delightful, or it may not fit your needs. The same can be said of options such as adaptive cruise control, or the seat ventilation system that can now be specified with the diamond quilting of the Mulliner Driving Specification. With all such features, Bentley offers the choice; the result will be your individual creation.





Mulliner. Let your imagination roam.

The name Bentley has been at the pinnacle of motoring since 1921. Henry Jervis Mulliner, made Mulliner's first Bentley coachwork in 1924. The two names have enjoyed an association ever since, cemented when H.J. Mulliner became Bentley's specialist coachbuilding division in 1959.

But craftsmanship and a shared history are only part of the story. Today, the name Mulliner is just as likely to be associated with the technology of an air suspension Sport mode as it is with exquisite diamond-quilted upholstery. Mulliner's team of craftsmen and women are always ready to accept the challenge to create an interior that's truly one of a kind. Recent commissions have included, a solid silver vanity set; veneer waistrails with

inlays of precious metal; and one-off fluted headlining in a unique, personally-commissioned colour scheme. Clearly, impossible is not a word you are likely to hear in the Mulliner workshops. So, if you wish to have instant access to music, film, TV, internet or telephony on the move, Bentley can add drop-down screens, tablet computers and a high performance hard drive to the specification of your Mulsanne. Alternatively, you may choose to have the headrests of your Mulsanne embroidered with a personal monogram, logo or crest, or personalise the treadplates. Everything is possible. When commissioning your Mulsanne, you can set your imagination free – and trust Mulliner to make the dream a reality.



Mulliner Driving Specification. A sharper edge.



While some luxury cars are designed solely around the rear seat passenger, Bentley offers a more sporting interpretation of grand touring. Although supremely cossetting to ride in, the Mulsanne's power, poise and handling also make it exceptionally rewarding to drive. And it is to keen drivers that the Mulliner Driving Specification for Mulsanne will have special appeal.

Distinguished from the outside by 21" 2-piece wheels with titanium fasteners and a new Flying 'B' Mulliner wing vent, the Mulliner Driving Specification recalibrates the Servotronic steering and Continuous Damping Control to offer a more responsive Sport mode. As a finishing touch, a self-levelling centre 'B' can also be fitted on the Mulliner 2-piece alloy wheels. Entirely appropriate, for a car of such impeccable balance.



Emphasising the Mulsanne's sporting character, the Mulliner Driving Specification interior includes perforated, diamond-quilted seats and door pads, with traditional Bentley sports knurling on the organ stop air vent controls and the gear lever for reassuring certainty of grip. Interior door handles are 'coined', a finish that has long associations with Bentley

sporting success, while a 'Handcrafted by Bentley Mulliner' treadplate can be found on the sills. The Mulliner Driving Specification adds to the impressive sporting credentials of the Mulsanne, as a reminder that a Bentley Grand Tourer effortlessly reconciles the two qualities of relaxation and exhilaration.



A Mulsanne to match your vision.

You may already have a clear mental picture of the colours, hides and veneers of your Mulsanne. For many customers, the pleasure of commissioning a bespoke Bentley is all about finding that ideal combination of interior and exterior colours,

and they tackle the near-infinite permutations of paint, veneer, hide and stitching with enjoyment. But if you would appreciate a little guidance, who better to assist you than the people who created the design? Bentley's designers have created a

selection of suggested colour specifications – not necessarily to be followed to the last detail, but used as a guide. They hope that the following pages inspire you to find the Mulsanne that reflects your personality – and matches your vision.



The power of contrast.

The classic, sophisticated and understated impact of the Onyx exterior finish is the perfect backdrop for the 'jewellery' of the Mulliner Driving Specification, with its polished 21" 2-piece alloy wheels and distinctive wing vent. Inside, Beluga hide and Piano Black trim continue the strong, positive ambience – and their dark tones frame the clean, fresh Linen main hide upholstery with its MDS diamond quilting. A Mulsanne that means business – in every sense.

Veneered Rim/ Main hide steering wheel.

Imperial Blue secondary hide

Chestnut veneer

Magnolia main hide



Classic with a twist.

Dark Sapphire is an inspired choice for an exterior with a hint of the unexpected. It's a contemporary shade that's elegantly understated, while the choice of 21" Classic alloy wheels accentuates the Mulsanne's sweeping lines. Inside, Magnolia hide with Imperial Blue secondary hide smoothly integrates with the exterior; the light shade of the Chestnut veneer creating a luxurious and relaxing ambience. Picture frame-style inlays on the waistrails add a contemporary note, and are a reminder of Crewe's peerless cabinetmaking skills in wood veneer.

Blue skies, bright days.

The scintillating Ghost White pearlescent finish appears at its very best in brilliant sunshine, and this shade is a popular choice for Bentley customers in warmer climates. The effect is confident and striking, especially when teamed with the Mulliner Driving Specification polished 2-piece alloy wheels and wing vent. Inside, the vibrant use of Hotspur secondary hide frames and contrasts the Linen main hide and Olive Ash veneer, giving the interior an unmistakably sporting ambience.



Single-tone steering wheel

Hotspur secondary hide

Olive Ash veneer

Linen main hide



Duo-tone steering wheel

French Navy secondary hide

Dark Burr Walnut veneer

Twine main hide



Subtle sensuality.

The lighter shade of Fountain Blue emphasises every coach-built line and crease of the Mulsanne's bodywork, and the exterior is given a sporting accent with the choice of 21" 2-piece 5-spoke alloy wheels. Inside, Dark Burr Walnut and Twine main hide harmonise perfectly, while the exterior finish and interior are brought together by the French Navy secondary hide. A contemporary take on traditional Bentley shades, creating an assured, elegant and cool specification.

Fire and passion.



The choice of Rubino Red exterior, Mulliner Driving Specification and Burnt Oak single colour interior makes a dramatic statement of sporting intent. Yet Rubino has a subtlety that other reds lack, giving this Mulsanne specification a sophisticated edge. The dark chocolate Burnt Oak hide is lifted by the use of Linen contrast stitching, while the diamond-quilted MDS upholstery is the classic sporting choice. The dark Vavona veneer has a hint of red to it, providing a subtle echo of the exterior colour.

Single-tone steering wheel

Burnt Oak secondary hide

Dark stained Vavona veneer

Burnt Oak main hide



The Mulsanne MDS featured in this book.



Exterior Colour - Tungsten

The Mulliner Driving Specification gives extra visual emphasis to the sporting side of the Mulsanne's character, so the choice of a steely Tungsten exterior finish makes the perfect partner for the 21" 2-piece alloy wheels and Mulliner wing vent. Twine main hide is a light shade with a contemporary feel and is ideal for the sporty diamond-quilted upholstery, while the secondary hide - Anthracite - brings the exterior colour and interior scheme into one holistic entity. The Burr Walnut veneer brings warmth and depth to the fascia, waistrails and trim.

21" MDS Alloy Wheel - Polished

Main Hide - Twine
Secondary Hide - Anthracite
Veneer - Burr Walnut

Seat Style - Diamond Quilted
Main Hide - Twine



The Mulsanne featured in this book.



Exterior Colour - Pale Brodgar

Pale Brodgar, a finish specially created for Mulsanne, sets a mood of golden autumnal mornings and displays the sculptured lines of the Mulsanne to perfection. Paired with understated 21" Classic alloy wheels the effect is of timeless elegance. Inside, the pairing of Autumn main hide with Porpoise secondary hide and straight fluted seat upholstery continues the mood - and nothing accentuates an enduring Bentley interior design such as this better than the warm figured graining of Burr Walnut.

21" Classic Alloy Wheel - Polished

Main Hide - Autumn
Secondary Hide - Porpoise
Veneer - Burr Walnut

Seat Style - Straight Flutes
Main Hide - Autumn



By scanning this QR code you can browse through additional specifications.

Mulsanne accessories.

All accessories for the Mulsanne are tested to Bentley standards, and Crewe's designers and engineers are involved in setting the specifications for many of the products. Privacy curtains, which can be fitted by your Bentley dealer, feature black curtains set into the rear and side window surrounds, and can be operated from the front and rear compartment. Other accessories include protective personalised car covers for both indoor and outdoor use, self-levelling wheel centre badges, winter traction aids for snow and ice and even a child seat trimmed to Bentley upholstery standards.

Please contact your Bentley dealer representative for details on the full accessories range.



PRIVACY CURTAINS



PRIVACY CURTAINS



PERSONALISED CAR COVERS



RELAXATION PACK



ILLUMINATED TREADPLATES



SPIKES-SPIDER



AUTOSOCK



SELF-LEVELLING WHEEL BADGES



PERSONALISED CHILD SEAT
(GROUPS 2-3)

The Bentley Collection.



FIDDLEBACK MAPLE VALET BOX



1:43 MULSANNE RED MODEL



ETTINGER IPAD CASE
Available in red and black



WEEKENDER LEATHER BAG



ETTINGER LEATHER NOTEBOOK



FLYING 'B' PAPERWEIGHT

The Bentley wings, designed by artist F. Gordon Crosby, are your guarantee of the highest quality standards. That's why everything that carries them, from the Mulsanne to a 1:43 scale model of the same car, has to be approved by the Bentley design team. From personal accessories such as Ettinger of London leather goods to the exquisite workmanship of a valet box for your watches and jewellery, the Bentley Collection offers a wide range of delightful possessions. Bentley Collection items such as the Flying 'B' paperweight also make wonderful gifts, giving lasting pleasure to the recipient.

For the Bentley Collection, please visit our online store www.bentleycollection.com or contact your dealer.

The enduring pleasure of Bentley ownership.

The Bentley Mulsanne represents the pinnacle of British motoring; a flagship for the marque designed and engineered without compromise. It combines outstanding luxury with the stirring performance and spirit that are at the heart of every Bentley. And, as with every Bentley ever made, the Mulsanne is built to give lasting enjoyment. The more you drive it, the more it will feel part of your life. Its traditionally-cured leather


upholstery will gain a welcoming patina with the years; the inexhaustible 6.75-litre engine will delight you with its immense power and refinement for hundreds of thousands of miles. And its unique combination of effortless performance, supple ride and exceptional comfort will be a pleasure to return to, each time you travel in it. That's the paradox of owning a Bentley. The more you use it as an everyday car, the more you'll appreciate its luxury.



Standard Specification.

DRIVETRAIN			
Type:	6.75-litre twin-turbocharged V8 with cam phasing and variable displacement – a first for the ultra-luxury sector		
Max Power:	512PS/505bhp/377kW at 4,200 rev/min		
Max Torque:	1,020Nm/752lbs.ft at 1,750 rev/min		
Emission Controls:	EU5 and LEVII emissions compliant		
Transmission:	8-speed automatic transmission with electronic shift interface, sport mode and steering wheel mounted paddleshift		
Driveline:	Rear wheel drive		
CHASSIS			
<ul style="list-style-type: none">Mulsanne 20" light-alloy wheels with 265 x 45 x ZR20 tyresDouble wishbone front suspensionMulti-link rear suspension with toe and brake reaction control. Uniquely developed for Mulsanne to handle extreme torqueElectronically-controlled air springs with Continuous Damping Control (CDC) to continuously monitor and adjust the vehicle's damping, ensuring optimum controlAutomatic ride height control, sensitive to speed and loadServotronic speed-sensitive power steering with two settings selectable by Drive Dynamics ControlDrive Dynamics Control – four driver-selectable settings for CDC and power steering:<ul style="list-style-type: none">Three standard modes: Bentley, Sport and ComfortA fourth mode, Custom, allows the driver to ‘tune’ the system to a preferred driving styleElectronic Stability Control (ESC) with ABS, traction control, hydraulic brake assist, electronic brake pre-fill and automatic hill-hold controlTwin-booster braking system with ventilated discs and Electronic Brake force Distribution (EBD)<ul style="list-style-type: none">‘Bentley’-branded front brake calipersFront brake discs: 2-piece assembly with 400mm diameter x 38mm thick iron disc and lightweight aluminium hubRear brake discs: 370mm diameter x 30mm thick iron disc with lightweight aluminium hubElectronic parking brake with drive-away assist and hill-hold featureChoice of tyre repair/inflation kit or emergency spare wheel and toolkit			
DIMENSIONS & CAPACITIES			
Wheelbase (mm/in)	3,266/10ft 8in		
Overall Length (mm/in)	5,575/18ft 3in		
Width (across mirrors) (mm/in)	2,208/7ft 3in		
Width with mirrors folded (mm/in)	1,926/6ft 4in		
Overall Height (mm/in)	1,521/5ft		
Unladen Weight (kg/lb) (Markets Outside North America)	2,685kg/5,919lb		
Unladen Weight (kg/lb) (North America)	2,711kg/5,676lb		
Gross weight (kg/lb)	3,200kg/7,055lb		
Front Axle Weight Limit (kg/lb)	1,479kg/3,261lb		
Rear Axle Weight Limit (kg/lb)	1,721kg /3,794lb		
Fuel Tank (litres/gallons/US gallons)	96/21.12/25.36		
Boot Volume (litres/m³/cu ft)	443/15.75 cu ft		
Drag (Cd)	0.33		
Turning Circle (kerb to kerb) (m)	12.9		
PERFORMANCE (SECONDS)			
0-100 km/h	5.3		
0-160 km/h	11.5		
0-60 mph	5.1		
0-100 mph	11.6		
Maximum Speed (mph/km/h)	184/296		
FUEL CONSUMPTION (EU CYCLE)			
Urban (litres)	11.2 mpg/25.3 l/100km		
Extra-urban (litres)	24.0 mpg/11.8 l/100km		
Combined (litres)	16.8 mpg /16.9 l/100km		
CO ₂ Emissions (combined) (g/km)	393		
FUEL CONSUMPTION (EPA CYCLE)			
City Driving (US mpg)	11		
Highway Driving (US mpg)	18		
Combined (US mpg)	13		
BODY & EXTERIOR			
<ul style="list-style-type: none">Steel monocoque body structure with front and rear energy-absorbing crumple zonesAluminium closures<ul style="list-style-type: none">Superformed aluminium front wingsAluminium bonnetAluminium doors with superformed structure and extruded aluminium side impact beamsComposite polymer bootlid housing fully concealed antennae systemsPainted radiator shell with bright stainless steel matrix grille and 2D Bentley Winged ‘B’ badgePaintwork applied and polished by hand to a mirror finishChoice of 28 paint colours especially selected for MulsanneBlack matrix grille to lower bumper aperturesFront wing vents with black matrix grillePolished stainless steel brightware to glass surroundsPolished stainless steel embellishers to doors and bumpersDoor pillar finishers in steel with gloss black painted finishPolished stainless steel ‘Mulsanne’ treadplates and commissioning platesWide oval polished stainless steel exhaust tailpipesTwin bi-xenon projector headlamps with LED halo for supplementary main beam, light-sensing auto operation, daytime running light signature and integrated washer jetsFloating-ellipse style, LED rear light clusters and discreet high-level stop lamp to rear screenColour-keyed, electronically adjustable door mirrors with heating, power folding, reverse-dip, two memory positions, electrochromatic dimming and integrated puddle lampsKeyless entry system with chromed metal door handles and engine start buttonSoft-close power latching to all doors for easy entry/exitPower bootlid operation with emergency releases inside boot and under rear seatPark distance control to front and rear with audible signal and graphics displayed via infotainment screen			
INTERIOR			
<ul style="list-style-type: none">Hand-selected leather to all trimmed surfaces including seating, fascia, console, door panels, door pillars, parcel shelf, cantrails, headlining, sunvisors, all stowage compartments and glovebox25 ‘standard’ colours in single-tone or duo-tone combinations in four different styles (colour splits) allowing the customer to choose not just the colour scheme but the mood of the interior – from very elegant to sporty			

Standard Specification.

COMFORT & CONVENIENCE			
<ul style="list-style-type: none">Specially developed, flat-cut and leather-bound carpet. Choice of 22 colours to match interior hideSet of four carpet overmats to match cabin carpet, leather bound and with polished stainless steel fixingsChoice of 23 seat belt colours with buckles colour-matched to interior hidesVeneer to fascia, continuous ‘ring of wood’ waistrails, centre console, rear centre armrest, and front and rear roof consoles in Burr Walnut, Dark Stained Burr Walnut or Piano Black. Six further veneer species are availableBright finish interior fittings in polished stainless steelUnique, glass switchgearDriver’s instrument panel featuring inverted, aviation-style dials for vehicle and engine speed; supplementary colour screen displaying a driver-configurable choice of navigation prompts, compass, infotainment, vehicle or trip informationMinor gauges panel in centre fascia with fuel gauge, analogue clock with ‘Bentley Motors’ inscription and coolant temperature gaugeConcealed passenger-side map lampBoot trimmed in leather and carpeted to match interior cabin with polished stainless steel sill plate			
INFOTAINMENT			
<ul style="list-style-type: none">8" high-resolution colour screen to display infotainment and vehicle systems information. Automatically concealed behind veneered panel when not in useCentral Multi Media Interface (MMI) rotary controller with convenience keys for instant access to main system menus of: navigation, telephone, radio, media (including TV when fitted), tone, information and car systems60GB hard disc drive unit fitted in glovebox with 20GB of personal storage space, single-slot DVD drive and 2 x SD card readers. Includes inbuilt Gracenote database that displays artist/album/song names from CDs6 x CD changer fitted in gloveboxVoice control for all major systems and operationsSatellite navigation system integrated in vehicle’s hard disc, ensuring fast route calculationFour map configurations including 3D topographical maps and city views and day/night display modes			
SAFETY, SECURITY & CHARGING			
<ul style="list-style-type: none">Intelligent driver’s airbag and front passenger airbag with deactivation facilityHead and thorax airbags fitted to front and rear seats3-point seat belts to front seats with electric height adjustment and memory function, pyrotechnic pre-tensioners and force limiters3-point seat belts to outer and centre rear seats with pyrotechnic pre-tensioners and force limiters to outer seatsRear seat ISOFIX child seat fixings with top tether pointsDirect tyre pressure monitoring system with provision for speed related warningVehicle immobiliser and interior volumetric alarm systemBattery conditioner with magnetic trickle charging point concealed in rear registration plate recess12V power sockets located in glovebox, rear centre armrest and boot in addition to cigar lighter sockets in front and rear cabin			
<p>This is a detailed specification of standard equipment for 13 Model Year Mulsanne. Slight variations may occur in some markets. Please consult your dealer for details.</p>			
<div><div><p>BENTLEY FINANCIAL SERVICES</p></div><div><p>Bentley Financial Services are available. Please contact your Bentley dealer representative, who can advise you on a finance plan specially tailored for your needs.</p></div></div>			

Optional Specification.

WHEELS & TYRES

- 20" Mulsanne alloy wheel – Chromed
- 21" Classic alloy wheel – Painted
- 21" Classic alloy wheel – Polished
- 21" 2-piece 5-spoke alloy wheel – Painted
- 21" 2-piece 5-spoke alloy wheel – Polished
- Space-saving spare wheel

EXTERIOR FITTINGS

- Flying ‘B’ radiator mascot
- Chromed radiator shell with bright stainless steel matrix grille
- Bright stainless steel matrix to lower bumper apertures and front wing vents
- Jewel fuel filler cap
- Bright stainless steel door pillar finisher
- Without front licence plate bracket*

GLASS & ROOF

- Shade band to tinted windscreen*
- Privacy glass to rear screen and rear side windows*
- Glass sunroof to front compartment

VENEERS

- Birds Eye Maple, Chestnut, Dark Stained Vavona, Olive Ash, Sapelli Pommele, Vavona

WOODWORK & INLAYS

- Bentley Wing badge and chrome inlay strip to waistrails and badge to fascia
- Bentley Wing badge to waistrails and fascia
- Contemporary style cross-banding and inlay to fascia and waistrails (only available with Burr Walnut)
- Picture frame-style inlay to waistrails (not available with Piano Black)
- Rear quarter vanity mirrors with veneer surround
- Veneer door panels
- Veneered iPod drawer and minor gauges panel
- Veneered picnic tables
- Veneered picnic tables with contemporary cross-banding and inlay

SEATING

- Contrast stitching
- Cross-stitching
- Embroidered Bentley emblems to all seats
- Seat piping
- Seat ventilation and massage function to front and rear seats

STEERING WHEELS & DRIVER CONTROLS

- Drilled alloy sports foot pedals
- Duo-tone hide-trimmed steering wheel (4-spoke)
- Heated single-tone hide trimmed steering wheel (4-spoke)
- Veneered gear lever
- Veneered-rim steering wheel (4-spoke) (available with Chestnut, Burr Walnut, Piano Black, Birds Eye Maple and Dark Stained Burr Walnut veneers)

MATS & RUGS

- Deep-pile Wilton carpet mats to front and rear
- Lambswool rugs for front and rear (in addition to standard overmats)

AUDIO & TECHNOLOGY

- ‘Naim for Bentley’ Premium Audio System
- Rear entertainment package incorporating two 8" LCD screens to headrests, DVD player to rear armrest surround, two sets of cordless headphones and remote control
- 6-disc DVD player
- Digital/analogue TV tuner*
- Wi-Fi hotspot*

CONVENIENCE

- Frosted glass, refrigerated bottle cooler with bespoke crystal champagne flutes
- Adaptive cruise control system*
- Additional cradle to rear for telephone privacy handset
- Additional information pack in alternative language (available in Europe only. Refer to the order guide for country applicability)
- Ambient interior mood lighting
- 2 City umbrellas
- 4 City umbrellas
- First aid kit in addition to warning triangle (market specific availability)
- Hand-stitched leather storage case
- Rear view camera
- Remote-controlled garage door opener*
- Side view camera (only available with rear view camera)
- Twin illuminated fold down vanity mirror and rear quarter vanity mirrors
- Valet key
- Bentley GPS tracking system full fitment (in addition to standard alarm system)*
- Bentley GPS tracking system preparation only (in addition to standard alarm system)*

MULLINER CATALOGUE

- Personalised embroidery to headrests
- Personalised treadplate plaques

MULLINER DRIVING SPECIFICATION

- Mulliner Driving Specification (Painted wheel)
- Mulliner Driving Specification (Polished wheel)
 - 21" 2-piece Mulliner alloy wheel
 - Sport tuned suspension and steering
 - Mulliner Flying ‘B’ style wing vents
 - Diamond-quilted hide door panels
 - Diamond-quilted hide seat covering
 - Drilled alloy sports foot pedals
 - Indented hide headlining
 - Coined finish to interior door handles
 - Knurled finish to organ stops
 - Knurled sports gear lever
 - ‘Handcrafted by Mulliner’ plaque
- Mulliner Driving Specification with alternative wheel

PREMIERE SPECIFICATION

- Ambient interior mood lighting
- Bright stainless steel door pillar finisher
- Bright stainless steel matrix to lower bumper apertures and front wing vents
- Flying ‘B’ radiator mascot
- iPod interface and leads with hand-stitched leather storage case
- Jewel fuel filler cap
- Rear view camera
- Remote-controlled garage door opener (not available in all markets)
- Seat ventilation and massage function to front and rear seats
- Shade band to tinted windscreen (not available in Japan)
- Valet key
- Veneered iPod drawer and minor gauges panel
- Veneered picnic tables





