

MUSTANG



ECOBOOST® | ECOBOOST PREMIUM | GT | GT PREMIUM | BULLITT

2019



**"HIGHEST RANKED MIDSIZE SPORTY CAR
IN INITIAL QUALITY, 2 YEARS IN A ROW"**
— J.D. Power, 2018

See back cover for details!



For over 5 decades, the original Pony car has spawned its share of legendary nameplates. Shelby® GT350. Boss® 302. Mach 1. Shelby GT500®. Just to name a few.

This year, another hero returns. This limited-edition Mustang is cloaked in authentic Dark Highland Green.¹ Free of stripes, spoilers and badges (no need), it packs a potent 480 horsepower² from its high-revving 5.0L V8. Ready to carve up pavement quicker than FRANK BULLITT's original, the newest BULLITT rockets out of the barrel with a lineage that no one else can claim. Evident in every 2019 Mustang. Fastback. Convertible. EcoBoost® GT. And the iconic BULLITT. Get yours. Get gone. And leave everything else behind.

THIS STABLE BREEDS LEGENDS.

MUSTANG



TRIPLE THREAT

JOIN THE CLUB.



BULLITT

Exclusively in
5.0L V8 fastback.
Dark Highland Green.



CONVERTIBLE

AVAILABLE: EcoBoost & EcoBoost Premium,
GT Premium.

SHOWN: GT Premium, Ruby Red. Available equipment.



FASTBACK

AVAILABLE: EcoBoost & EcoBoost Premium,
GT & GT Premium.

SHOWN: EcoBoost Premium, Velocity Blue.
Available equipment.

Standards are high at this establishment. Admittance requires: a fastback, convertible or new limited-edition BULLITT. Next, choose a torque-rich 2.3L EcoBoost® or a rumbling 5.0L V8. Then, select a precise 6-speed manual or smooth-shifting 10-speed SelectShift® automatic¹ to transfer that power to the pavement. Now, you're more than ready to pass the entrance test. We have no doubt you'll enjoy the benefits of membership.

MAKE IT PERSONAL: 14 wheel designs! 7 instrument panel finishes! A fully customizable 12" LCD instrument cluster! MyMode! which allows you to save your favorite drive settings, including suspension, steering and exhaust note preferences. And, from the moment you unlock your door until the engine roars to life, a start button that pulses red. Now more than ever, the power to personalize Mustang is directly in your hands.

¹Available feature. ²In lieu of a traditional spare tire, Mustang comes equipped with a portable air compressor and a can of tire sealant to inflate and seal small punctures for short periods of time. ³Always wear your safety belt and secure children in the rear seat. BULLITT and all related characters and elements © & ™ Warner Bros Entertainment Inc. (s18)

STANDARD ON EVERY MUSTANG

MECHANICAL

Electronic line-lock (track use only)

Launch control (manual transmission only)

Selectable-effort electric power-assisted steering (Normal, Sport, Comfort)

Suspension - Front: MacPherson strut with stabilizer bar; rear: independent integral link with stabilizer bar

Tire inflator and sealant kit²

DRIVER-ASSIST TECHNOLOGY

Autolamp automatic on/off headlamps with wiper activation

INTERIOR

Auto-dimming rearview mirror

Illuminated visor mirrors

Power windows with global open and front one-touch-up/-down feature

Tilt/telescoping steering column

TrackApps™ located in instrument cluster

EXTERIOR

LED headlamps with signature lighting, and LED taillamps with sequential turn signals

Power sideview mirrors with integrated blind spot mirrors

Variable-intermittent windshield wipers

SAFETY & SECURITY

Personal Safety System™ with dual-stage front airbags³

Driver's knee, glove-box-door-integrated knee, and front-seat side airbags³

Side-curtain airbags³ (fastback only)

AdvanceTrac® electronic stability control

Belt-Minder® front safety belt reminder

Enhanced Security Package (standard on convertible): Active Anti-Theft System, electronic-locking center console, electronic steering column lock, and wheel locks

Individual Tire Pressure Monitoring System (excludes available spare)

Intelligent Access with push-button start

MyKey® technology to help encourage responsible driving

Perimeter alarm

Rear view camera

SecuriLock® Passive Anti-Theft System

SOS Post-Crash Alert System™

RUN

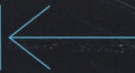
WILD AND FREE.

The joy of driving is celebrated here. Whether carving a canyon or hitting the track with a race-tuned Mustang, this cockpit's sole purpose is to heighten your connection to the road. 4-wheel, fully independent suspension¹ delivers excellent road feel and precise handling. Steering column: tilts and telescopes. Accelerator and footrest: at matching angles. Shifter placement: allows open access to controls. Whatever Mustang you choose, additional performance features can enhance its already stellar driving experience.

MAKE IT PERSONAL: Selectable Drive Modes¹ allow you to activate predefined powertrain and chassis calibrations from Normal, Sport+, Track, Drag Strip and Snow/Wet. As road conditions change, Mustang can too. Select the Performance Package on EcoBoost[®] and GT models to customize your Mustang by maximizing performance with a host of chassis, body and suspension upgrades. A MagneRide[®] Damping System¹ further improves ride quality by providing lightning-quick responsiveness to changing road conditions. Get ready to rumble.

GT Premium. Premium Plus Package. Leather-trimmed interior in Midnight Blue. Available equipment. ¹Available feature.

**MAGNERIDE
DAMPING SYSTEM**
Available on all
Mustang models.





ZERO TO SEXY.

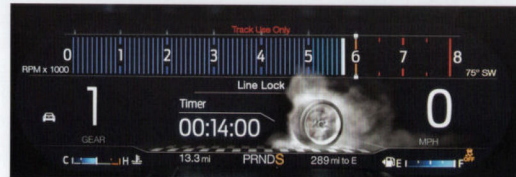
In no time flat. Transform your Mustang as often as you'd like with the customizable 12" color LCD instrument cluster. You'll be amazed not only at how it looks, but at what it can do. Circle tach? Ribbon tach? Cluster with 1, 2 or 3 gauges? You choose. Then redesign it as often as you want. You can also enhance it further with MyColor.[®] Set your primary, secondary and ambient lighting colors. With over 30 different color choices, the possibilities are almost endless. Through the Pony button on the steering wheel, choose what information is displayed: any combination of 1 to 3 virtual gauges (there are 8 to choose from); Exhaust mode; TrackApps;[™] a Performance Shift Indicator (3 types with configurable rpm); launch control; and more. It's easy to view. And like everything else Mustang, it's fast. And oh so responsive.

AVAILABLE: EcoBoost[®] Premium & GT Premium **STANDARD:** BULLITT

BULLITT and all related characters and elements © & ™ Warner Bros Entertainment Inc. (s18)



MUSTANG TRACKAPPS



LIGHT 'EM UP. At the track. In the cluster. With standard Line Lock, you can "heat up" the Mustang rear tires. While they smoke outside, you'll see them smokin' here as well.



NO STOPWATCH NEEDED. Record your time and average speed at 3 separate tracks in the Lap Timer. Store up to 100 sessions (a session is 25 laps) in Track Mode.



1,320 FEET OF EXHILARATION. The 1/4 mile. The Acceleration Timer shows you how quickly you get there. Start your launch with the iconic "Christmas tree." 3-2-1. Gone!

GO IN STYLE.

From the symmetrical twin brows to the Pony on the steering wheel to the toggle switches front and center, this interior is definitively Mustang.

MAKE IT PERSONAL: Premium models add aluminum foot pedals, ambient lighting with MyColor,[®] an Angled Brush aluminum instrument panel finish, illuminated door-sill scuff plates, and heated and cooled leather-trimmed front seats. Premium Plus Package interior upgrades include a heated steering wheel, accent-color stitching on the seats, instrument panel, center console lid, wrapped knee bolsters and shifter boot, and more.

INTERIOR DIMENSIONS

Head room 37.6"
Leg room (max.) 45.1"
Hip room 54.9"
Shoulder room 56.3"

BULLITT and all related characters and elements © & ™ Warner Bros Entertainment Inc. (s18)

NEW B&O PLAY™
PREMIUM AUDIO SYSTEM BY HARMAN
with CD player and 12 speakers
(plus subwoofer), is ready to rock
Mustang Premium models and BULLITT.

EcoBoost

TURBOCHARGED TENACITY.

310 HORSEPOWER
@ 5,500 RPM¹


350 LB.-FT. OF TORQUE
@ 3,000 RPM¹



There are no wrong choices with Mustang. EcoBoost® models have serious swagger and turbocharged street cred. There's no denying the performance numbers, including the EPA-estimated 32 hwy mpg.²

MAKE IT PERSONAL: Mustang is designed to custom-fit the way you drive, down to the very last detail. Choose sleek fastback or drop-top convertible. 10 different wheel choices are available on EcoBoost models, from standard 17" Sparkle Silver-painted aluminum to the 20" premium painted aluminum rims on EcoBoost Premium. You can even customize your EcoBoost exhaust note with the Active Valve Performance Exhaust System,³ new to EcoBoost for 2019. Make a statement with the Black Accent Package. Or appeal to the racer inside with the over-the-top racing stripes,³ which return this year. There are so many ways you can make this legend your own.

EcoBoost Premium. Race Red. Black Accent Package. Available equipment. ¹Horsepower and torque ratings achieved with 93-octane fuel. ²EPA-estimated rating: 21 city/32 hwy/25 combined mpg, 2.3L with 10-speed SelectShift[®] automatic transmission. Actual mileage will vary. ³Available feature.



THE BLACK ACCENT PACKAGE
blacks out the roof, wheels, badges
and decklid spoiler.



Fun-to-ride 6-speed manual. Smooth-shifting 10-speed SelectShift® automatic! Cloth or leather-trimmed¹ front buckets. Six unique instrument panel trim¹ choices. Mustang EcoBoost® delivers on style. And performance. "Regardless of which mode you prefer or how you dial in the settings, there's no denying the EcoBoost Mustang is damn quick on a back road," says *Motor Trend*. Upgrade to the Carbon Sport Interior Package to cover the instrument panel and shift knob with sleek carbon fiber, while Alcantara® inserts enhance the door-trim panels and Ebony leather-trimmed seats.

EcoBoost Premium. Carbon Sport Interior Package. Active Valve Performance Exhaust System and other available equipment. ¹Available feature.

ECOBOOST

Equipment Group 100A

Includes STANDARD FEATURES, PLUS:

- 6-speed manual transmission
- 3.31 limited-slip rear differential
- 12.6" vented disc brakes with 2-piston front calipers
- SYNC® Voice Recognition Communications and Entertainment System with 4.2" LCD screen, 911 Assist®, AppLink®, and 2 smart-charging USB ports
- 4-way manually adjustable cloth driver's seat
- 2-way manually adjustable cloth front-passenger seat
- AM/FM stereo with 6 speakers
- Carbon Zag instrument panel trim
- Dual bright exhaust with rolled tips

AVAILABLE OPTIONS: ECOBOOST / ECOBOOST PREMIUM

Equipment Group 101A (EcoBoost only): 18" machined-face aluminum wheels with High-gloss Ebony Black-painted pockets, SYNC 3, 9-speaker audio system, Selectable Drive Modes with 4-gang toggle switch pack, SiriusXM,®1 6-way power cloth front seats, Silver Arrow aluminum instrument panel trim, dual-zone electronic automatic temperature control, Remote Start System (requires automatic), decklid spoiler, and Reverse Sensing System

Enhanced Security Package² (standard on convertible): Active Anti-Theft System, electronic-locking center console, electronic steering column lock, and wheel locks

Ford Safe and Smart™ Package: adaptive cruise control & forward collision warning with brake support, Pre-Collision Assist with Pedestrian Detection and Automatic Emergency Braking (AEB), automatic high-beam headlamps, Lane Keeping System, and rain-sensing windshield wipers

10-speed SelectShift® automatic transmission with steering wheel-mounted paddle shifters, 3.15 limited-slip rear differential, Remote Start System (included with 101A and EcoBoost Premium), and leather-wrapped shifter

Active Valve Performance Exhaust System including quad exhaust tips²

Compact spare wheel and tire²

Engine block heater

MagneRide® Damping System²

Over-the-top racing stripes²

Premium floor liners

Spoiler delete²

Voice-activated Navigation System² with pinch-to-zoom capability, and integrated SiriusXM Traffic and Travel Link® with 5-year subscription¹

ECOBOOST PREMIUM

Equipment Group 200A

Includes SELECT ECOBOOST FEATURES, PLUS:

- Selectable Drive Modes with 4-gang toggle switch pack (Normal, Sport+, Track, Drag Strip, Snow/Wet)
- SYNC 3 with 8" LCD capacitive touchscreen, 911 Assist, AppLink, Apple CarPlay™ compatibility, Android Auto™ compatibility, and 2 smart-charging USB ports
- Reverse Sensing System
- 6-way power, heated and cooled leather-trimmed front seats with driver-seat power lumbar
- AM/FM stereo with 9 speakers and amplifier
- SiriusXM with 6-month trial subscription¹
- Aluminum accelerator, brake and clutch pedals
- Ambient lighting with MyColor®
- Angled Brush aluminum instrument panel trim
- Bright-finish door speaker surrounds
- Dual-zone electronic automatic temperature control
- Heated sideview mirrors with integrated turn signal indicators
- Illuminated door-sill scuff plates
- Premium door trim including soft rollover
- Universal garage door opener
- LED fog lamps
- Decklid spoiler
- Pony projection lamps

AVAILABLE OPTIONS: ECOBOOST PREMIUM

RECARO® sport leather-trimmed front seats²

B&O PLAY™ Premium Audio System from HARMAN with single-CD player, 12 speakers and subwoofer, plus HD Radio™ Technology

- | | | |
|------------------------------|---|--|
| ALUMINUM WHEELS ² | 1 | 17" x 8" Sparkle Silver-Painted
EcoBoost: Standard |
| | 2 | 19" x 8.5" Polished
EcoBoost/EcoBoost Premium: Available |
| | 3 | 18" x 8" Machined-Face with Low-Gloss Ebony Black-Painted Pockets
EcoBoost: Optional |
| | 4 | 18" x 8" Machined-Face with High-Gloss Ebony Black-Painted Pockets
EcoBoost: Available EcoBoost Premium: Standard |
| | 5 | 20" x 9" Premium Painted
EcoBoost Premium: Optional |

POWERTRAIN

2.3L EcoBoost I-4

310 hp @ 5,500 rpm³
350 lb.-ft. of torque @ 3,000 rpm³

EPA-estimated fuel economy ratings⁴

6-speed manual
21 city/31 hwy/25 combined mpg

6-speed manual (convertible)
20 city/28 hwy/23 combined mpg

6-speed manual (Performance Package)
20 city/27 hwy/23 combined mpg

10-speed SelectShift automatic
21 city/32 hwy/25 combined mpg

10-speed SelectShift automatic (convertible)
20 city/28 hwy/23 combined mpg

10-speed SelectShift automatic (Performance Package)
20 city/28 hwy/23 combined mpg



POWER TO PERSONALIZE.

CHOOSE ECOBOOST. THEN MAKE IT YOURS.

Inside and out, style is in the details. With these packages, you can equip Mustang EcoBoost with what matters most to you. From interior and exterior mods to upgraded performance, we've got you covered.



Wheel & Stripe Package^{2,5}

ECOBOOST / ECOBOOST PREMIUM

19" x 8.5" machined-face aluminum wheels with Dark Tarnish-painted pockets, and beltline side stripes



Black Accent Package^{2,9}

ECOBOOST / ECOBOOST PREMIUM

19" x 8.5" Ebony Black-painted aluminum wheels, and Black-painted roof, badging and decklid spoiler



Premium Plus Package (Equipment Group 201A)

ECOBOOST PREMIUM

- 12" configurable LCD digital instrument cluster with MyColor[®]
- Heated steering wheel
- FordPass[™] Connect (embedded 4G LTE modem)^{6,7}
- Voice-activated Navigation System
- **Premier Trim with Color Accent Group:** stitched center console lid, wrapped knee bolsters with accent stitching, and shifter boot; color-accented leather-trimmed front seats and unique door-trim panel inserts; wrapped center console with accent stitching; and Linked Graphite aluminum instrument panel trim
- BLIS[®] (Blind Spot Information System) with cross-traffic alert
- Memory feature for driver's seat, sideview mirrors and ambient lighting



Carbon Sport Interior Package^{2,8}

ECOBOOST PREMIUM

Alcantara[®] seat and door-trim panel inserts, and carbon-fiber instrument panel trim and shift knob



Pony Package^{2,10}

ECOBOOST PREMIUM

19" x 8.5" polished aluminum wheels, unique Pony grille, side stripes, tri-bar Pony badge, bright beltline moldings and window surrounds (fastback), and premium carpeted front floor mats with embroidered Pony logo in Ebony



EcoBoost Performance Package^{2,11}

ECOBOOST / ECOBOOST PREMIUM

- Black-painted strut-tower brace
- Larger radiator
- Upsized rear sway bar
- Unique front springs
- Unique chassis tuning
- Larger brake rotors with 4-piston front calipers
- Unique electric power-assisted steering (EPAS), ABS and electronic stability control tuning
- Engine Spun aluminum instrument panel trim
- Gauge Pack (oil pressure and boost)
- Performance rear wing spoiler (fastback), or spoiler delete (convertible)
- 3.55 TORSEN[®] limited-slip rear differential

- 1 19" x 9" low-gloss Ebony Black-painted aluminum wheels with 255/40R19 summer-only tires.¹² Standard
- 2 19" x 9" Luster Nickel-painted forged-aluminum wheels with 255/40R19 summer-only tires.¹² Optional





¹After your trial period ends, SiriusXM audio and data services each require a subscription sold separately, and as part of a package, by SiriusXM Radio, Inc. See SiriusXM Customer Agreement for complete terms at siriusxm.com. All fees and programming subject to change. Trial subscriptions not available in AK and HI. Restrictions may apply. See your dealer for details. ²Horsepower and torque ratings achieved with 93-octane fuel. Actual mileage will vary. ³Not available with optional wheels, over-the-top racing stripes or the following Packages: Black Accent, Pony, or EcoBoost Performance. ⁴Certain restrictions, 3rd-party terms, or message and data rates may apply. See footnote 5 on Stay Connected on The Move page and your Ford Dealer for details. ⁵Not available with RECARO sport front seats. ⁶Not available with Ford for Green, optional wheels, over-the-top racing stripes or the following Packages: Wheel & Stripe, Pony, or EcoBoost Performance. ⁷Not available with Ford for Green, optional wheels, over-the-top racing stripes or the following Packages: Wheel & Stripe, Black Accent, or Pony. ⁸Ford does not recommend using summer tires when temperatures drop to approximately 45°F or below (depending on the wear and environmental conditions), or in snow/ice conditions. If the vehicle must be driven in these conditions, Ford recommends using all-season or snow tires.

5.0L GT

THE GRUNT. THE GROWL.

You can hear it coming. The wicked 5.0L V8 rumble that is Mustang GT. "No other engine with a mass-made badge sounds anything like as good as this," says CAR magazine. This high-revving V8 features a dual-injection system and plasma transferred wire arc (PTWA) spray-bore cylinder-lining technology to deliver 420 lb.-ft. of torque¹ along with its 460 horsepower.¹ You'll enjoy making this beast howl.

MAKE IT PERSONAL: Customize your Mustang GT exhaust note with the Active Valve Performance Exhaust System.² Then store your settings in MyMode³ for easy recall. With Quiet Start, you can even keep that signature rumble to a minimum, when leaving the neighborhood at 5 a.m., for instance. Up your street cred with the GT Performance Package. You'll get Brembo[™] 6-piston front calipers with larger rotors, Michelin[®] Pilot[®] Sport 4S summer-only tires and a TORSEN[®] limited-slip differential. And that's just for starters.

460 HORSEPOWER
@ 7,000 RPM¹

UNDER 4 SECONDS
0-60 MPH¹



GT Premium, Velocity Blue. Available equipment. ¹Horsepower and torque ratings achieved with 93-octane fuel. ²Available feature. ³Mustang GT with GT Performance Package, 10-speed automatic and Drag Strip mode. Figures based on internal Ford test data.



GT Premium Convertible. Ingot Silver. California Special Package. Ebony Leather-trimmed interior. Available equipment.
*Class is High-Power Sports Cars based on Ford segmentation. **Available feature.



GT PREMIUM AVAILABLE IN
**sleek fastback or
gorgeous drop-top
convertible.**

Release the latch. Press the button. Go topless. Mustang GT Premium Convertible delivers open-air freedom at its best. Along with design cues that set it apart from fastback. Note the higher muscle line along the haunches. The cleverly contoured trunk lid. And tonneau caps that slide neatly in place. There's even best-in-class¹ trunk space.

MAKE IT PERSONAL: Choosing GT Premium Convertible is a great way to personalize Mustang. The cloth convertible top is electrically driven for quick, quiet operation. You can easily open or close it from the driver's seat thanks to a center latch. Showstopper Red or Midnight Blue leather-trimmed seats² will guarantee glances with the top down. Add side scoops, side stripes, a unique grille with the tri-bar Pony badge, and much more, with the new California Special Package. There are so many ways to make Mustang your own.

INTERIOR VOLUME		
Passenger volume (cu. ft.)	Fastback 82.8	Convertible 79.2
Luggage capacity (cu. ft.)	Fastback 13.5	Convertible 11.4
Total interior volume (cu. ft.)	Fastback 96.3	Convertible 90.6

GT (fastback only)

Equipment Group 300A

Includes **STANDARD FEATURES, PLUS:**

6-speed manual transmission with dual mass flywheel, twin-disc clutch, and Rev Matching

3.55 limited-slip rear differential

Larger brake rotors with 4-piston front calipers

Engine oil cooler

SYNC®

Reverse Sensing System

6-way power, cloth front seats with driver-seat power lumbar

Silver Arrow aluminum instrument panel trim

Dual exhaust with quad tips

LED fog lamps

Raised blade-style decklid spoiler

Unique high-gloss Black-painted grille

Unique rear valance

AVAILABLE OPTIONS: GT / GT PREMIUM**Equipment Group 301A** (GT only): SYNC 3, 9-speaker audio system, Selectable Drive Modes with 4-gang toggle switch pack, SiriusXM®,¹ dual-zone electronic automatic temperature control, and ambient lighting with MyColor®**Enhanced Security Package**² (standard on convertible): Active Anti-Theft System, electronic-locking center console, electronic steering column lock, and wheel locks**Ford Safe and Smart™ Package:** adaptive cruise control & forward collision warning with brake support, Pre-Collision Assist with Pedestrian Detection and Automatic Emergency Braking (AEB), automatic high-beam headlights, Lane Keeping System, and rain-sensing windshield wipers10-speed SelectShift® automatic transmission with steering wheel-mounted paddle shifters, 3.15 limited-slip rear differential, Remote Start System, and leather-wrapped shifter
3.55 limited-slip rear differential (requires automatic)²

Active Valve Performance Exhaust System

Compact spare wheel and tire²MagneRide® Damping System²Over-the-top racing stripes²

Premium floor liners

Spoiler delete²Voice-activated Navigation System² with pinch-to-zoom capability, and integrated SiriusXM Traffic and Travel Link¹ with 5-year subscription¹**GT PREMIUM**

Equipment Group 400A

Includes **SELECT GT FEATURES, PLUS:**

Selectable Drive Modes with 4-gang toggle switch pack (Normal, Sport+, Track, Drag Strip, Snow/Wet)

SYNC 3 with 8" LCD capacitive touchscreen, 911 Assist®, AppLink®, Apple CarPlay™ compatibility, Android Auto™ compatibility, and 2 smart-charging USB ports

Leather-trimmed front seats

Heated and cooled front seats

AM/FM stereo with 9 speakers and amplifier

SiriusXM with 6-month trial subscription¹

Aluminum accelerator, brake and clutch pedals

Ambient lighting with MyColor

Angled Brush aluminum instrument panel trim

Bright-finish door speaker surrounds

Dual-zone electronic automatic temperature control

Heated sideview mirrors with integrated turn signal indicators

Illuminated door-sill scuff plates

Premium door trim including soft rollover

Universal garage door opener

Pony projection lamps

AVAILABLE OPTIONS: GT PREMIUMRECARO® sport leather-trimmed front seats²

B&O PLAY™ Premium Audio System from HARMAN with single-CD player, 12 speakers and subwoofer, plus HD Radio™ Technology

- ALUMINUM WHEELS²**
- 18" x 8" Machined-Face with High-Gloss Ebony Black-Painted Pockets
GT/GT Premium: Standard
 - 18" x 8" Machined-Face with Low-Gloss Ebony Black-Painted Pockets
GT: Optional
 - 19" x 8.5" Polished
GT Premium: Optional
 - 20" x 9" Premium Painted
GT Premium: Optional

POWERTRAIN**5.0L Ti-VCT V8**

460 hp @ 7,000 rpm

420 lb.-ft. of torque @ 4,000 rpm

EPA-estimated fuel economy ratings³

6-speed manual

15 city/24 hwy/18 combined mpg

6-speed manual (convertible)

15 city/24 hwy/18 combined mpg

6-speed manual (Performance Package)

15 city/24 hwy/18 combined mpg

10-speed SelectShift automatic

16 city/25 hwy/19 combined mpg

10-speed SelectShift automatic (convertible)

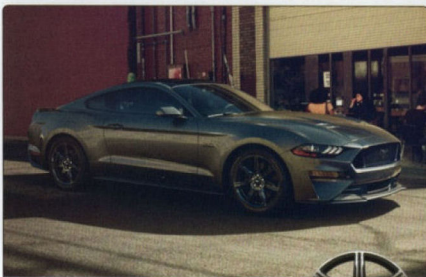
15 city/24 hwy/18 combined mpg



POWER TO PERSONALIZE.

CHOOSE GT. THEN MAKE IT YOURS.

Exclusive package content helps you equip Mustang GT with what matters most to you. From interior and exterior mods to heart-palpitating performance upgrades, we've got you covered.



Black Accent Package^{2,4}

GT / GT PREMIUM

19" x 8.5" Ebony Black-painted aluminum wheels, and Black-painted roof, badging and decklid spoiler



Premium Plus Package (Equipment Group 401A)

GT PREMIUM

- 12" configurable LCD digital instrument cluster with MyColor[®]
- Heated steering wheel
- FordPass[™] Connect (embedded 4G LTE modem)^{5,6}
- Voice-activated Navigation System
- **Premier Trim with Color Accent Group:** stitched center console lid, wrapped knee bolsters with accent stitching, and shifter boot; color-accented leather-trimmed front seats and unique door-trim panel inserts; wrapped center console with accent stitching; and Linked Graphite aluminum instrument panel trim
- BLIS[®] (Blind Spot Information System) with cross-traffic alert
- Memory feature for driver's seat, sideview mirrors and ambient lighting



Carbon Sport Interior Package^{2,7}

GT PREMIUM

Alcantara[®] seat and door-trim panel inserts, and carbon-fiber instrument panel trim and shift knob

California Special Package^{2,8}

GT PREMIUM

- 19" x 8.5" machined-face aluminum wheels with high-gloss Ebony Black-painted pockets
- Unique grille with tri-bar Pony badge
- GT Performance Package front air splitter
- Pedestal-style decklid spoiler
- Mid-body side stripes
- Side scoops
- Miko[®] door-trim panel inserts with red stitching
- Ebony leather-trimmed seats with Miko inserts and red stitching
- Premium carpeted front floor mats with California Special script and red stitching
- Unique California Special badging



GT Performance Package^{2,9}

GT / GT PREMIUM

- Unique front air splitter
- Silver-painted strut-tower brace
- Larger radiator
- Upsized rear sway bar
- Heavy-duty front springs
- Unique chassis tuning
- K-member brace
- Brembo[™] 6-piston front calipers
- Performance rear wing spoiler (fastback only)
- Unique electric power-assisted steering (EPAS), ABS and electronic stability control tuning
- Engine Spun aluminum instrument panel trim
- Gauge Pack (oil pressure and vacuum)
- 3.73 (manual)/3.55 (automatic) TORSEN[®] limited-slip rear differentials

GT Performance Package Level II¹⁰

GT / GT PREMIUM

GT Performance Package, plus:

- MagneRide[®] Damping System
- Unique track-inspired springs and sway bar
- Unique track-inspired tuning
- Unique front splitter and rear spoiler
- Michelin[®] Pilot[®] Sport Cup 2 summer-only tires¹¹

1 19" x 9" front and 19" x 9.5" rear Ebony Black-painted aluminum wheels with 255/40R19 front and 275/40R19 summer-only tires¹¹

GT Performance Package: Standard

2 19" x 9" front and 19" x 9.5" rear Luster Nickel-painted forged aluminum wheels with 255/40R19 front and 275/40R19 rear summer-only tires¹¹

GT Performance Package: Optional

3 19" x 10.5" front and 19" x 11" rear Dark Tarnish Stainless-painted aluminum wheels with 305/30R19 summer-only tires¹¹

GT Performance Package Level II: Standard





¹After your trial period ends, SiriusXM audio and data services each require a subscription sold separately, or as part of a package, by SiriusXM Radio, Inc. See SiriusXM Customer Agreement for complete terms at siriusxm.com. All fees and programming subject to change. Trial subscriptions not available in AK and HI. ²Restrictions may apply. See your dealer for details. ³Actual mileage will vary. ⁴Not available with Need for Green, optional wheels, over-the-top racing stripes or the following Packages: California Special, GT Performance, or GT Performance Level II. ⁵Certain restrictions, 3rd-party terms, or message and data rates may apply. See footnote 5 on Stay Connected on The Move page and your Ford Dealer for details. ⁶Certain restrictions, 3rd-party terms, or message and data rates may apply. See footnote 5 on Stay Connected on The Move page and your Ford Dealer for details. ⁷Not available with Need for Green, optional wheels, RECARO sport front seats, spoiler delete, or the following Packages: Black Accent, Carbon Sport Interior, GT Performance, or GT Performance Level II. ⁸Not available with optional wheels, spare wheel and tire, or the following Packages: Black Accent, California Special, or GT Performance Level II. ⁹Not available with 30-speed automatic, optional wheels, engine block heater, spare wheel and tire, spoiler delete, and the following Packages: Black Accent, California Special, and GT Performance. ¹⁰Ford does not recommend using summer tires when temperatures drop to approximately 45°F or below (depending on tire wear and environmental conditions), or in snow/ice conditions. If the vehicle must be driven in these conditions, Ford recommends using all-season or snow tires.

BULLITT

THE CHASE IS ON.

It's the most iconic car chase in movie history. 10 minutes of fury in the hit 1968 movie *Bullitt* where a Highland Green Mustang GT 390 fastback gets air on the streets of San Francisco. 50 years later, the limited-edition 2019 **BULLITT** will keep you in hot pursuit of all that is Mustang. 480 horsepower* from an upgraded 5.0L V8 with a larger 87-mm throttle body. A 6-speed manual. Only. Content from the GT Premium with the Performance Package. Dark Highland Green exterior² paint. Red painted Brembo™ brakes. And enough attitude to catch whatever you're chasing. Limited edition means they'll go fast. Get yours before you're left in its rear view.

➤ **480** HORSEPOWER
@ 7,000 RPM¹

➤ **420** LB.-FT. OF TORQUE
@ 4,800 RPM¹



FLIGHT PATTERN.
BEHIND THE SCENES
WITH BULLITT.



For demonstration purposes (Remember that famous movie!). Vehicle modified for safety. Power jump your Mustang. Professional stunt driver on a closed course (Again... NEVER jump your Mustang). Do not attempt (We are not kidding - DO NOT ATTEMPT).

BULLITT, Dark Highland Green. Available equipment. ¹Horsepower and torque ratings achieved with 93-octane fuel. ²Shadow Black also available. BULLITT and all related characters and elements © & ™ Warner Bros. Entertainment Inc. (318)

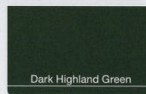


STANDARD:
**6-speed manual; white
 “cue ball” shift knob,
 a nod to the original.**

You can't mistake this interior for any other Mustang. **BULLITT** door-sill scuff plates. IP badge with chassis number. BULLITT logo on the driver airbag cover. Plus, Green accent hand-stitching throughout. And a 12" color LCD instrument cluster – standard.

MAKE IT PERSONAL: Add the BULLITT Electronics Package which includes a B&O PLAY™ Premium Audio System by HARMAN, voice-activated Navigation and more; the MagneRide® Damping System; or RECARO® leather-trimmed seats with Green accent stitching.

BULLITT and all related characters and elements © & ™ Warner Bros Entertainment Inc. (s18)



⁴Ford does not recommend using summer tires when temperatures drop to approximately 45°F or below (depending on tire wear and environmental conditions), or in snow/ice conditions. If the vehicle must be driven in these conditions, Ford recommends using all-season or snow tires.

BULLITT

Equipment Group 500A

Includes SELECT GT PREMIUM FEATURES, PLUS:

- 6-speed manual transmission with dual mass flywheel, twin-disc clutch and Rev Matching
- 3.73 TORSEN® limited-slip rear differential
- 19" x 9" front and 19" x 9.5" rear 5-spoke Heritage wheels and 255/40R19 front and 275/40R19 rear summer-only tires⁴
- Black NitroPlate™ exhaust tips
- Brembo™ 6-piston front calipers
- Active Valve Performance Exhaust System
- Gauge Pack (oil pressure and vacuum)
- High-performance radiator
- K-member brace
- Unique front springs
- Upsized rear stabilizer bar
- Modified Shelby GT350® intake manifold
- Open Air Induction System (AIS)
- Revised Powertrain Control Module (PCM) calibrations
- Silver-painted strut-tower brace with BULLITT badge
- Unique chassis tuning
- Unique electric power-assisted steering (EPAS), ABS and electronic stability control tuning
- SYNC® 3

- 12" configurable LCD digital instrument cluster with MyColor®
- BULLITT door-sill scuff plates, instrument panel badge with unique chassis number, and faux gas cap with BULLITT logo
- Enhanced Security Package
- Green accent stitching on center console armrest, door trim, instrument panel, premium floor mats, shifter boot and seats
- Heated steering wheel
- Spindrift aluminum instrument panel trim
- White cue ball shift knob
- Wrapped center console and knee bolster
- Spoiler delete
- Unique upper and lower grilles

AVAILABLE OPTIONS

- BULLITT Electronics Package:** BLIS® (Blind Spot Information System) with cross-traffic alert; voice-activated Navigation System; B&O PLAY™ Premium Audio System by HARMAN with 12 speakers and subwoofer, plus HD Radio™ Technology; and memory feature for driver's seat, sideview mirrors and ambient lighting
- Full vehicle cover
- MagneRide Damping System
- RECARO sport leather-trimmed manually adjustable front seats

KEEP

ALERT AND RESPONSIVE.

Every aspect of the 2019 Mustang is designed to give you greater confidence behind its leather-wrapped steering wheel. This includes driver-assist technology^{1,2} that covers the front, rear and sides of the vehicle. Equip your Mustang with the Ford Safe and Smart™ Package, and it can encourage your alertness, help direct you to return to your lane, and even help you keep a preset distance from the vehicle in front of you.



EVEN BACKING UP

See what's behind Mustang as you slowly back up. A standard rear view camera¹ puts a full-color image on the LCD screen that centers the instrument panel.

WHEN CHANGING LANES

Add BLIS® (Blind Spot Information System) with cross-traffic alert^{2,3} which warns you if it detects a vehicle in either of your blind spots while driving forward, or approaching from the sides while backing up.

IN TRAFFIC

When activated, adaptive cruise control^{2,4} helps maintain your choice of speed and preset gap from the vehicle in front of you.

IF NEEDED

Pre-Collision Assist with Pedestrian Detection^{2,5} can alert you with visible and audible warnings if a potential collision with a vehicle or pedestrian is detected. If it determines a collision is imminent, Automatic Emergency Braking (AEB) may apply the brakes.

BETWEEN THE LINES

Drifting out of your lane? The Lane Keeping System^{1,2} can help when activated. By alerting you with steering wheel vibration, and even applying steering wheel torque, it helps direct you to return to your lane.⁶

GT Premium Convertible, Ruby Red Metallic Tinted Clearcoat. Available equipment. ¹Driver-assist features are supplemental and do not replace the driver's attention, judgment and need to control the vehicle. ²Available feature. ³BLIS replaces standard integrated blind-spot mirrors. ⁴Lane Keeping System does not control steering. ⁵Pre-Collision Assist with Pedestrian Detection can detect pedestrians, but not in all conditions and does not replace safe driving. See owner's manual for system limitations.

STAY CONNECTED ON THE MOVE.

IT ALL STARTS HERE

This vibrant 8" touchscreen is the command center of SYNC® 3 voice-activated technology,^{1,2} which integrates your paired mobile phone with Ford Mustang as soon as you start your vehicle. Make calls. Send and receive text messages. And so much more. Just swipe left or right, or use simple voice commands, to help ensure that your life doesn't miss a beat. SYNC 3 also features 2 smart-charging USB ports to help keep your devices powered up.



LINK YOUR APPS

SYNC 3 AppLink³ links your favorite compatible mobile apps with your voice, giving you convenient control. iPhone® users can view the Waze™ app's community-based navigation and traffic features on the large SYNC 3 touchscreen. Amazon Alexa users can access thousands of skills and services they enjoy on their Amazon Echo with the Ford+Alexa® app.

CONNECT TO FORDPASS CONVENIENCE

FordPass™ Connect's 4G LTE Wi-Fi hotspot^{2,3} lets passengers connect tablets, laptops and smartphones. It includes a complimentary 3-month or 3GB data trial. And that's only part of its convenience. Together with the FordPass smartphone app,⁴ FordPass Connect allows you to remotely start⁵ your car and climate control system using your smartphone. As well as locate your vehicle and check approximate fuel range. FordPass also helps you find fuel and compare prices. Find, reserve and pre-pay for parking in select locations. Plus, get help 24/7 from our trained team of Ford Guides.

CONNECT YOUR IPHONE

Apple CarPlay™ compatibility^{2,4} displays the iPhone interface on your vehicle's touchscreen. Send and receive text messages by voice. Get directions. Access playlists from Apple Music®. Just ask Siri® for help. She already knows your voice.

CONNECT YOUR ANDROID PHONE

Android Auto™ compatibility^{2,4} displays the Android™ interface on your vehicle's touchscreen. Get voice-guided navigation from Google Maps™ and Waze. Access your favorite music from your apps. Make calls. Send and receive messages. Just talk to Google™ Assistant and go.

MAP YOUR ROUTE

Voice-activated navigation⁷ delivers turn-by-turn directions and vivid 3-D maps on the SYNC 3 touchscreen. Pinch-to-zoom capability allows for a closer look. SiriusXM® Traffic & Travel Link^{8,9} helps you avoid traffic – before you're in the middle of it. It also provides fuel prices and station locations. Current and forecasted weather. Movie locations and showtimes. Plus, the scores of your favorite sports teams, and more.



¹Don't drive while distracted. Use voice-operated systems when possible; don't use handheld devices while driving. Some features may be locked out while the vehicle is in gear. Not all features are compatible with all phones. ²Available feature. ³Certain restrictions. 3rd-party terms and data rates may apply. See your Ford Dealer for details. Commands may vary by phone and AppLink software. ⁴Certain Alexa functionality is dependent on smart-home technology. ⁵FordPass Connect includes complimentary 1-year subscription for remote features, excluding Wi-Fi hotspot, and starts with vehicle sale date. Subscription is subject to compatible 4G network availability. Certain restrictions, 3rd-party terms, or message and data rates may apply. Evolving technology/cellular networks may affect future functionality. Wi-Fi hotspot includes complimentary wireless data trial that begins upon AT&T activation and expires at the end of 3 months or when 3GB of data is used, whichever comes first, but cannot extend beyond the complimentary subscription period for remote features. To activate, go to www.att.com/ford. ⁶Available via download and compatible with select smartphone platforms. Learn more at fordpass.com. Message and data rates may apply. ⁷Automatic transmission only. ⁸Requires phone with active data service and compatible software. SYNC does not control 3rd-party products while in use. 3rd parties are solely responsible for their respective functionality. ⁹After your trial period ends, SiriusXM audio and data services each require a subscription sold separately, or as a package, by SiriusXM Radio Inc. See SiriusXM Customer Agreement for complete terms at www.siriusxm.com. All fees and programming are subject to change. Trial subscriptions not available in AK and HI.



Dark Ceramic Cloth



Ebony Cloth



Ebony Leather



Ceramic Leather



Tan Leather



Ebony Leather



Showstopper Red Leather
(RECARO® shown)



Midnight Blue Leather
(RECARO® shown)



Ebony Leather with
Alcantara® Inserts



Ebony Leather with
Miko® Inserts



Wheel & Stripe Package:

Silver Stripes 1, 3-8
Ebony Stripes 2-8, 10



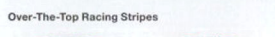
Pony Package:

White Stripes 1, 4-8, 10
Ebony Stripes 2-8, 10



California Special Package:

Silver Stripes 1
Ebony Stripes 2-3, 5-6



Over-The-Top Racing Stripes
Ebony Stripes 2-10 White Stripes 1-2, 4-8, 10

Colors are representative only. See your dealer for actual paint/trim options.
*Metallic. †Additional charge. ‡Requires Ebony over-the-top racing stripes.

ECOBOOST® / GT



Dark Ceramic Cloth 1-10
Ebony Cloth

ECOBOOST PREMIUM / GT PREMIUM



Ebony Leather 1-10
Ceramic Leather 1-10
Tan Leather 1-5, 7-8

ECOBOOST PREMIUM PLUS



Ebony Leather 1-10

PACKAGE / GT PREMIUM PLUS PACKAGE



Showstopper Red Leather 1-8
Midnight Blue Leather 1-7

CARBON SPORT INTERIOR PACKAGE



Ebony Leather/Alcantara Inserts 1-10

CALIFORNIA SPECIAL PACKAGE



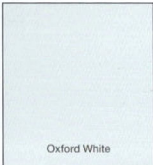
Ebony Leather/Miko Inserts 1-3, 5



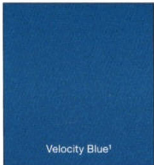
Shadow Black
1



Ingot Silver†
2



Oxford White
3



Velocity Blue†
4



Kona Blue†
5




Race Red
6



Magnetic†
7



Ruby Red Metallic
Tinted Clearcoat‡
8



Need for Green‡
9



Orange Fury
Metallic Tri-coat‡
10



BUILD YOUR OWN MUSTANG.

When you're ready to take your Pony to the next level, look no further than Ford Performance Parts. Using a convenient search tool at performanceparts.ford.com, you can select your model year to view the full list of performance parts specifically designed for your Mustang. You'll find everything from superchargers to handling packs, exhaust and brake upgrades, appearance items and more. They are all engineered, developed and tested by the people who know your Mustang best – which gives you the performance, reliability and durability that you've come to expect from the Blue Oval.

Learn more at performanceparts.ford.com.



New Vehicle Limited Warranty. We want your Ford Mustang ownership experience to be the best it can be. Under this warranty, your new vehicle comes with 3-year/36,000-mile bumper-to-bumper coverage, 5-year/60,000-mile Powertrain Warranty coverage, 5-year/60,000-mile safety restraint coverage, and 5-year/unlimited-mile corrosion (perforation) coverage – all with no deductible. Please ask your Ford Dealer for a copy of this limited warranty.

Roadside Assistance. Covers your vehicle for 5 years or 60,000 miles, so you have the security of knowing that help may be only a phone call away should you run out of fuel, lock yourself out of the vehicle or need towing. Your Ford Dealer can provide complete details on all of these advantages.

Ford Credit. Get the ride you want. Whether you plan to lease or finance, you'll find the choices that are right for you at Ford Credit. Ask your Ford Dealer for details or check us out at fordcredit.com.

Ford Protect™ Extended Service Plans. Whether you purchase or lease your Ford vehicle, insist on genuine Ford Protect extended service plans. Ford Protect has a variety of plans to give you peace-of-mind protection whether you want vehicle component or maintenance coverage. Plus, they are fully backed by Ford and honored at all Ford dealerships in the U.S., Canada and Mexico. When you visit your dealer, insist on genuine Ford Protect extended service plans.

Insurance Services. Get Ford Motor Company quality in your auto insurance. Our program offers industry-leading benefits and competitive rates. Call 1-877-367-3847, or visit us at fordvip.com for a no-obligation quote. Insurance offered by American Road Services Company (in CA, American Road Insurance Agency), a licensed agency and subsidiary of Ford Motor Company.

Ford Original Accessories. They're warranted for whichever provides you the greatest benefit: 24 months/unlimited mileage, or the remainder of your Bumper-to-Bumper 3-year/36,000-mile New Vehicle Limited Warranty. Ford Licensed Accessories (FLA) are warranted by the accessory manufacturer's warranty. FLA are designed and developed by the accessory manufacturer and have not been designed or tested to Ford Motor Company engineering requirements. Contact your Ford Dealer for details and/or a copy of all limited warranties.

Alcantara is a registered trademark of Alcantara S.p.A., Italy. Amazon, Alexa, Echo, and all related logos are trademarks of Amazon.com, Inc. or its affiliates. Android, Android Auto, Google, Google Maps, Google Play, Waze and logos are trademarks of Google Inc. Apple, Apple CarPlay, Apple Music, iPhone and Siri are trademarks of Apple Inc., registered in the U.S. and other countries. App Store is a service mark of Apple Inc. B&O Play is a trademark of HARMAN International Industries, registered in the United States and other countries. Brembo is a trademark of Brembo S.p.A. GT350, GT500 and Shelby are registered trademarks of Carroll Hall Shelby Trust. "HD Radio" and the HD Radio logo are proprietary trademarks of iBiquity Digital Corporation. MagneRide is a trademarked technology of BWI Group. Michelin and Pilot are registered trademarks of Michelin North America, Inc. Miko is a registered trademark of Miko s.r.l. PANDORA, the PANDORA logo, and the Pandora trade dress are trademarks or registered trademarks of Pandora Media, Inc. Used with permission. RECARO is a registered trademark of RECARO Beteiligungs-GmbH. Sirius, XM, SiriusXM and all related marks and logos are trademarks of Sirius XM Radio Inc. TORSEN is a registered trademark of JTEKT Corporation.

Comparisons based on competitive models (class is High-Power Sports Cars based on Ford segmentation), publicly available information and Ford certification data at time of printing. Vehicles may be shown with optional equipment. Features may be offered only in combination with other options or subject to additional ordering requirements/limitations. Dimensions shown may vary due to optional features and/or production variability. Information is provided on an "as is" basis and could include technical, typographical or other errors. Ford makes no warranties, representations, or guarantees of any kind, express or implied, including but not limited to, accuracy, currency, or completeness, the operation of the information, materials, content, availability, and products. Ford reserves the right to change product specifications, pricing and equipment at any time without incurring obligations. Your Ford Dealer is the best source of the most up-to-date information on Ford vehicles.

ford.com/mustang



©2018 Ford Motor Company. Printed in the USA. Please recycle.



GT Premium in Ingot Silver Metallic accessorized with Performance Package rear spoiler, side and quarter window scoops, hood vents, park lamp curtains, Pony grille insert, wheel center caps, and wheel lock kit



Full vehicle covers¹



Carbon-fiber gear shift knob



Floor liners



Remote start systems

Shop the complete collection at accessories.ford.com

¹Ford Licensed Accessory.



Go Further



We're Hagen Ford Inc. And we go further for you. We're dedicated to serving you now and in the future. We are owned and operated by the Hagen family. We actively support community services and events. We offer full on-site maintenance and repairs performed by factory-trained technicians. We have a huge inventory of new and pre-owned vehicles. From vehicle test-drives and product demonstrations to personalized service and maintenance, we're committed to delivering a Ford ownership experience above and beyond your expectations.

Hagen Ford Inc
3980 North Euclid Ave
Bay City, MI 48706
hagenford.com

200741530101-09620-19MSTMYB

Sales Hours

(989) 684-4600

M 8:30 am – 8:00 pm
Tu 8:30 am – 6:00 pm
W 8:30 am – 6:00 pm
Th 8:30 am – 8:00 pm
F 8:30 am – 6:00 pm
Sa 10:00 am – 3:00 pm

Service Hours

(989) 684-4600

M 7:30 am – 5:30 pm
Tu 7:30 am – 5:30 pm
W 7:30 am – 5:30 pm
Th 7:30 am – 5:30 pm
F 7:30 am – 5:30 pm
Sa 8:00 am – 1:00 pm

*The Ford Mustang received the lowest rate of reported problems among Midsize Sporty Cars in the J.D. Power 2017-2018 U.S. Initial Quality Studies of new vehicle owners' experience with their own vehicle after 90 days of ownership. Visit jdpower.com/awards.