

SS *R*



PART PICKUP. PART ROADSTER. PURE JOYRIDE.

A 300-horsepower Vortec 5300 aluminum small block V8. A power-retractable hardtop. Cast-aluminum 19-inch front and 20-inch rear wheels. And a five-link rear suspension. Introducing the 2004 SSR.

Available in limited quantities, it's a vehicle that could only be a Chevrolet.



Some photographs in this catalog show vehicles with available features.

MATTER OF FACT, YOU DO OWN THE ROAD.



WHAT CONCEPT VEHICLES DREAM TO BE.

To bring the SSR concept to life, design and engineering teams utilized powerful computers, math-based design software and three-dimensional digital modeling. This approach allowed the exterior shape and the vehicle architecture to be simultaneously refined during development — and an SSR production vehicle that remains true to the original idea.

FOCUSING THE VISION

Design-based computer software was used to:

- Translate the original concept sketch into an electronic three-dimensional model.
- Create a foam model that served as a foundation for the SSR concept vehicle.

SCULPTING THE SURFACE

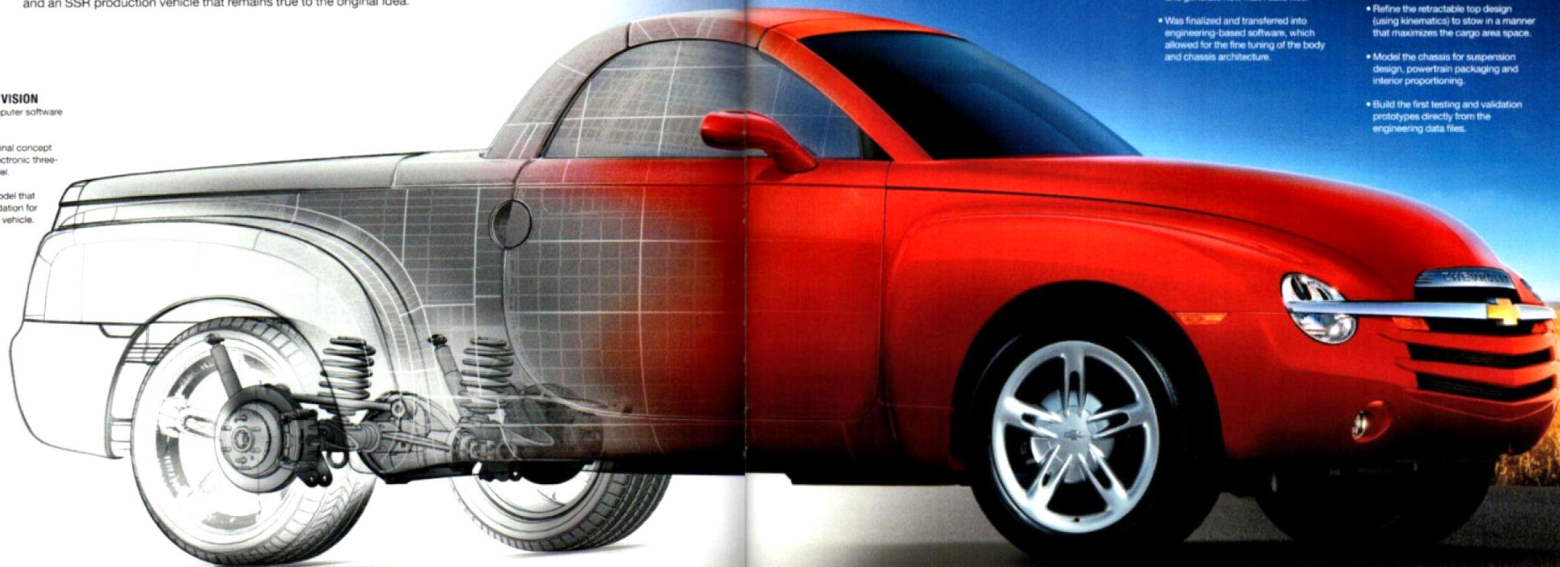
Once the SSR design concept was established, the computer math data:

- Helped generate a clay model for the design team to smooth the finite proportions of SSR's tapered shape and muscular fenders. The surfaces were then scanned to reflect the changes and generate new math data files.
- Was finalized and transferred into engineering-based software, which allowed for the fine tuning of the body and chassis architecture.

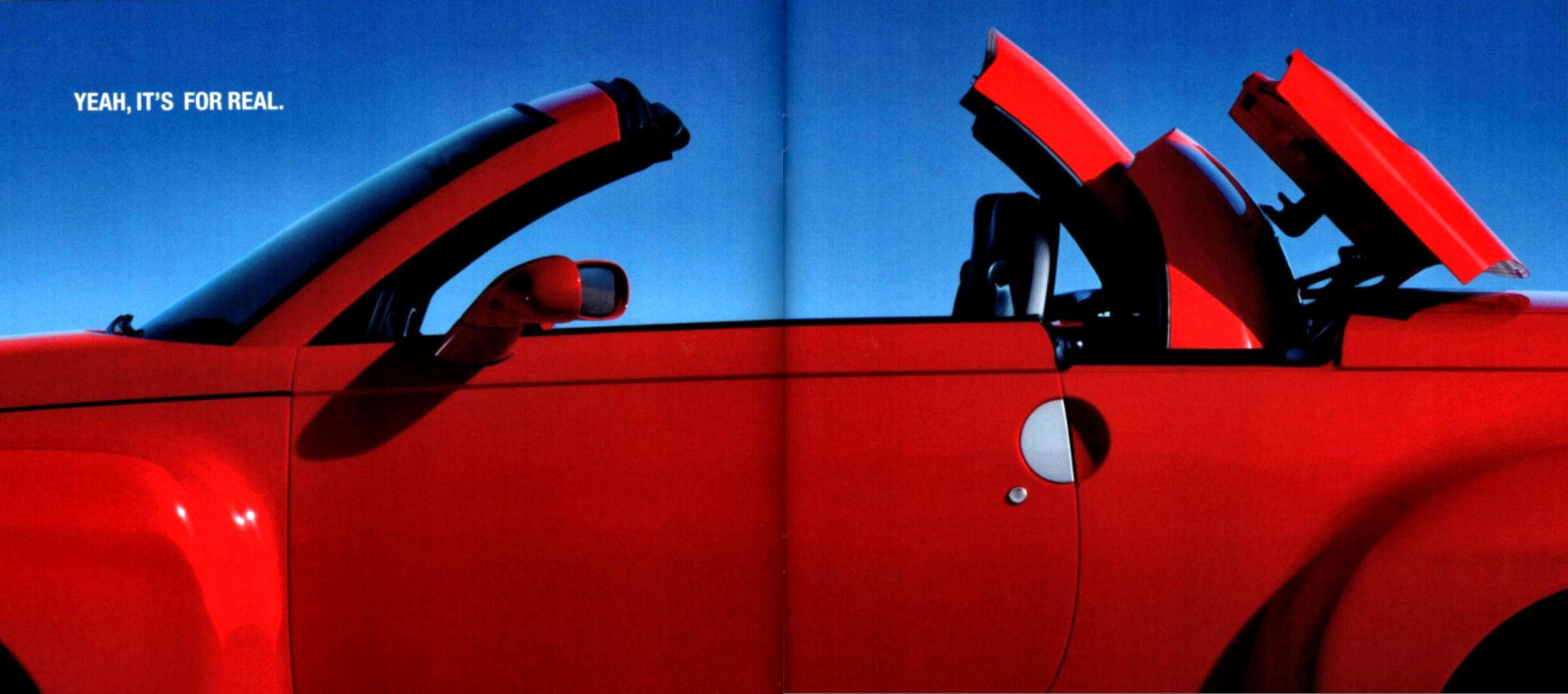
CREATING THE ARCHITECTURE

With the design concept locked in, the math data allowed engineers to:

- Conduct structural analysis of the body and frame designs to reveal weaknesses in the structure — and develop the engineering solutions to achieve the structural benchmarks.
- Refine the retractable top design (using kinematics) to stow in a manner that maximizes the cargo area space.
- Model the chassis for suspension design, powertrain packaging and interior proportioning.
- Build the first testing and validation prototypes directly from the engineering data files.



YEAH, IT'S FOR REAL.





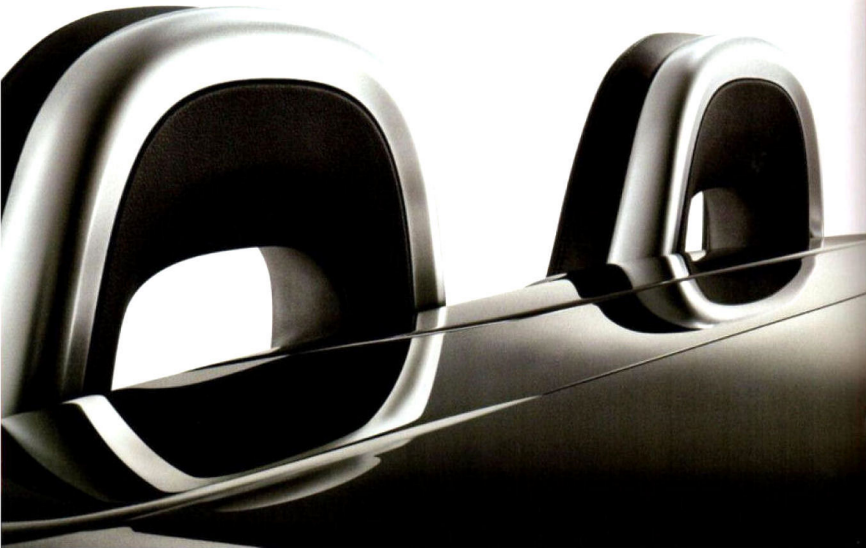
With the touch of one button, SSR transforms from a fully enclosed roadster to a convertible in less than 30 seconds. It's the result of a power-retractable hardtop — the only system of its kind on a pickup-styled vehicle.



The roof panels move independently on steel linkages to vertically stack and store in a bulkhead behind the passenger compartment. This design allows the cargo area to remain unchanged with the top up — or down.



Once the top is fully lowered, it's enclosed by a hard cover for a smooth appearance. And to meet our quality standards, the entire roof system was tested through 8,000 operation cycles.



Redline Red

SSR FEATURED AT RIGHT WITH:

The power-retractable top in the closed position.

Color-keyed running boards available from GM Accessories.

Available chrome Speedline wheels — 19-inch front and 20-inch rear.

Goodyear Eagle RS-A Touring tires — P255/45R-19 front and P295/40R-20 rear.



IN THIS CASE, FUNCTION FOLLOWED FORM.

The flared fenders are a distinctive part of SSR's styling. However, they required a manufacturing process that would eliminate stretching (or drawing) the steel to the point of weakness. To meet this challenge, a new stamping process called Inverted Toggle Draw was used for the fenders, and heavy-gauge, deep-draw galvanized steel was utilized for all sheet metal.

PERFORMANCE ART.



ROOM FOR TWO. BUT EXPECT A CROWD.

The wraparound twin-cockpit interior of SSR includes Ebony bucket seats with Nuance leather seating surfaces, a color-keyed waterfall console, satin chrome accents and available Bose speakers.



SSR INTERIOR FEATURES HIGHLIGHTED AT RIGHT:

1. Satin chrome door handle.
2. Color-keyed console and transmission shifter handle.
3. Gauges trimmed in satin chrome.
4. Satin chrome three-dial climate controls.



SMALL BLOCK V8. OF COURSE.

The Vortec 5300 V8 has 300 horsepower and 335 lb.-ft. of torque. And the small block design includes a lightweight — yet strong — deep-skirt aluminum block with cast-in-place cylinder liners, cast-aluminum cylinder heads with roller rockers, a composite intake manifold and Electronic Throttle Control.



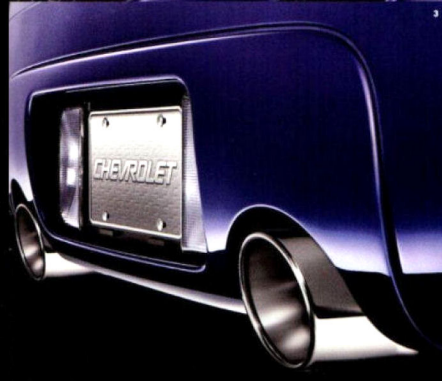
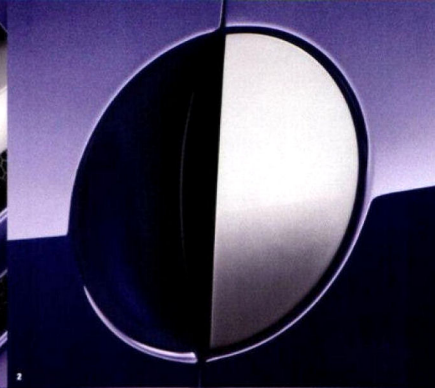
IT HAULS CARGO, TOO. The SSR cargo area includes a bedliner and hard tonneau cover that's unlocked via the Remote Keyless Entry system. The integrated tailgate features a satin chrome inside release for a smooth exterior appearance and increased security when closed. And the tonneau cover can be easily removed. SSR shown with available cargo compartment trim.



Ultra Violet Metallic

SSR EXTERIOR FEATURES DETAILED AT RIGHT:

1. Satin chrome Chevrolet hood accent.
2. Flush satin chrome door handles.
3. Polished stainless-steel dual exhaust outlets.
4. Flush headlamps with satin chrome chevron bar.



HOT ROD GENETICS. CHEVY DNA.

The backbone for SSR's character is its structure. The cab and cargo area are formed from a steel unibody. And full-length hydroformed frame rails and eight stamped-steel cross members provide a rigid chassis that resists flexing under load. This foundation enabled engineers to better tune the independent front and five-link rear suspension for an optimum balance of ride and handling.

INDEPENDENT FRONT SUSPENSION

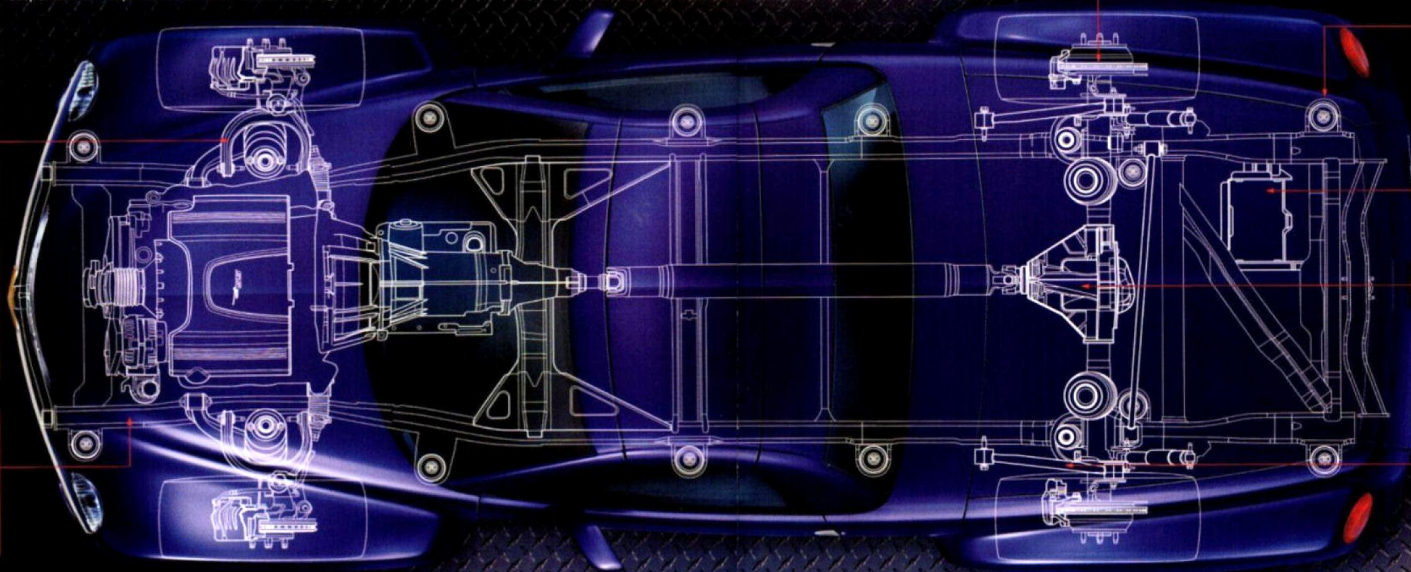
The independent front suspension system utilizes upper and lower A-arms, a modular coil-over shock design and a 32mm tubular stabilizer bar. And an innovative slot/slip casting suspension attachment cast in the frame helps maintain accurate alignment over the life of the vehicle.

ELECTRONIC TRACTION ASSIST

Wheel-speed sensors automatically detect rear-wheel slippage and reduce engine power via the Electronic Throttle Control to help enhance vehicle traction on slippery surfaces.

HYDROFORMED FRAME RAILS

Hydroforming the SSR side frame rails produces a more consistent steel wall thickness for greater strength, lighter weight and better dimensional control than traditionally stamped pieces.



FOUR-WHEEL DISC BRAKES WITH ABS

Four-wheel disc brakes with 12.8-inch ventilated rotors and weight-saving aluminum calipers are standard. The system also includes ABS, dual-piston front calipers and non-asbestos organic brake linings.

TUNED BODY MOUNTS

Twelve specially tuned body mounts are strategically located on the chassis and tuned tri-axially to achieve a balance between chassis stiffness and noise suppression.

REAR-MOUNTED BATTERY

Placing the battery in the rear allows for better weight distribution and helps extend battery life since it's exposed to lower temperatures than under the hood.

ZEXEL-TORSEN REAR DIFFERENTIAL

The standard Zexel-Torsen rear differential features a gear-based limited-slip design. The Torsen system transfers up to 70 percent of available torque to the wheel with traction quicker than a clutch-type limited-slip design.

FIVE-LINK REAR SUSPENSION

The rear suspension utilizes two upper and two lower links that attach to the frame at four points and a transverse link (or track bar) to help lateral stability. And to keep ride and handling responsive, SSR features Bilstein monotube shock absorbers with specifically tuned valving, steel coil springs and a 24mm stabilizer bar.



WE CALLED IT SMOKIN' ASPHALT FOR A REASON.



SSR SHOWN ON THE OPEN ROAD WITH:

The power-retractable hardtop in the lowered position.

Satin chrome head restraint trim.

Integrated tailgate design.





IT'S BEYOND PERSONAL.

SSR lives for the open road and the cruise night. But it just might be missing one thing — your own personal touch. Set SSR apart with available GM Accessories. Each accessory has been engineered specifically for SSR and is covered by the GM New Vehicle Limited Warranty. See the inside back cover for a complete listing and warranty details.

SSR shown with the cargo-area tonneau cover removed and an available dealer-installed cargo-area cover storage system from GM Accessories.



AVAILABLE CUSTOMIZING CHOICES FOR SSR SHOWN AT RIGHT:

1. Color-keyed engine cover.
2. Integrated side-saddle storage.
3. Cargo netting and cargo compartment trim packages.
4. Aluminum-colored cargo floor rub strips.



SELECT SSR FEATURES AND ACCESSORIES.

INTERIOR

Air conditioning	S
Air bags — front and side-impact, driver and front-passenger*	S
Air Bag Off Switch, passenger-side†	S
Cruise control	S
Driver Information Center with steering wheel-mounted controls	S
Electric rear-window defogger	S
Floor mats, carpeted	S
Inside rearview mirror with reading lamps	S
Inside rearview mirror, auto-dimming with HomeLink and reading lamps	O†
PASSock theft-deterrent system	S
Power windows with express-down feature	S
Seats, reclining bucket with Nubuck leather seating surfaces in Ebony — includes power lumbar, six-way power driver and two-way power passenger adjustment	S
Seats, heated — includes driver memory seat	O†
Steering wheel, leather-wrapped with audio controls	S
Remote Keyless Entry	S

SOUND SYSTEMS

CD player with seek-scan, auto tone control, automatic volume, TheftLock and Radio Data System (RDS)	S
Bose speaker system	O†
CD changer, six-disc	O†

REGULAR PRODUCTION ACCESSORIES

FLOOR MATS — embroidered with the SSR logo. **RUNNING BOARDS** — satin chrome with nonslip surface. **CARGO COMPARTMENT TRIM PACKAGE** — includes carpet trim for the cargo bed and tailgate, cargo area light, and nine wood bed strips. **COLOR-KEYED ACCENT PACKAGE** — includes color-keyed engine cover insert and running boards. **INTEGRATED SIDE-SADDLE STORAGE** — includes two form-fitted, lockable storage boxes that attach to the floor and side tracks. **CARGO NETTING PACKAGE** — includes a cargo net and four tie-down rings. The net attaches at the tailgate and to a telescoping crossbar, which allows the flexibility of covering the entire cargo area. **TOWING PACKAGE** — includes a hitch extension that inserts into a rear cross member and accepts a 1.75" x 2.25" ball (not included).

OTHER ACCESSORIES

VEHICLE COVER — custom-constructed of lightweight material to keep dust and dirt away from the paint and allow moisture to evaporate. The cover also includes Chevy and SSR logos. **CARGO-AREA COVER STORAGE SYSTEM** — includes a soft storage bag for the cargo area cover and wall-mounting hardware for storage. Color-keyed cargo rail trim covers are also included. **CARGO-AREA CUSTOMIZED FLOOR RUB STRIPS** — includes seven strips (color-keyed or aluminum-colored) and two floor track covers.

EXTERIOR

Cargo-area cover with power remote release	S
Daytime Running Lamps	S
Dual power, heated mirrors	S
Foglamps, halogen	S
Glass, Solar-Ray tinted with deep-tinted rear window	S
Headlamps, halogen projector beam	S
Paint — Slingshot Yellow	O
Wheels — cast-aluminum (19" x 8" front and 20" x 10" rear) S	S
Wheels — chrome cast-aluminum (19" x 8" front and 20" x 10" rear)	O
Tires — Goodyear Eagle RS-A Touring, P255/45R-19 front and P295/40R-20 rear	S

ENGINE/CHASSIS

Alternator — 145-amp	S
Battery — rear-mounted with 600 cca	S
Brakes — ventilated four-wheel disc with ABS	S
Differential — Zexel-Torsen limited-slip	S
Electronic Traction Control	S
Engine — Vortec 5300 V8 with deep-skirt aluminum block	S
Fuel tank, 25-gallon (approximate)	S
Sport Suspension — ZQ8	S
Steering — quick-ratio rack-and-pinion with power-assist	S
Transmission — Hydra-Matic electronically controlled 4-speed automatic	S
Tire sealer and inflator kit	S
S — Standard O — Optional	

DIMENSIONS

EXTERIOR (IN.)	
Wheelbase:	116.0
Track (fr):	64.1/64.9
Length:	191.4
Width:	78.6
Height:	64.2
INTERIOR (IN.)	
Headroom:	40.0
Legroom:	42.1
Hip room:	51.3
Shoulder room:	53.5
CAPACITIES	
Cargo volume ² (cu. ft.):	22.5
Maximum trailer weight rating ³ (lbs.):	2,500

¹ Always use safety belts and proper child restraints, even with air bags. Children are safer when properly secured in a rear seat. Never place a rear-facing infant restraint in the front seat of any vehicle equipped with an active air bag. Air Bag Off Switch for use when carrying children. See the Owner's Manual for more safety information. ² Requires PEG 15B. ³ Cargo and load capacity limited by weight and distribution. ⁴ Maximum trailer weight ratings are calculated assuming a base vehicle, except for any option(s) necessary to achieve the rating, plus driver. The weight of other optional equipment, passengers and cargo will reduce the maximum trailer weight your vehicle can tow. See your Chevy dealer for additional details.

THE CHEVROLET OWNER CENTER.

The Chevrolet Owner Center is a place where you'll be able to easily and conveniently find relevant information and services for your vehicle. Register your vehicle at chevy.com/myssrlink to access information including: • Maintenance reminders • Important safety information • Service history tracking • Personal Digital Assistant (PDA) applications • Your Owner's Manual • News and events • Warranty and service information • Special offers and privileges.

NEW VEHICLE LIMITED WARRANTY.

This warranty is for GM vehicles registered in the USA, see your Chevrolet dealer for terms and conditions.

Covered for 2 years/26,000 miles (whichever comes first):

• The complete vehicle • Tires • Towing to your nearest Chevrolet dealership • Cosmetic corrosion resulting from defects • Repairs made to correct any vehicle defect • No charge for most warranty repairs

Covered for 6 years/100,000 miles (whichever comes first):

• Rust-through corrosion

24-HOUR ROADSIDE ASSISTANCE.

Call 1-800-CHEV-USA toll free anytime during the warranty period. Towing and basic technical advice come with the Basic Care Package. Courtesy Care provides additional features,* including locksmith services, flat tire changing, fuel delivery, non-warranty towing and jump starts. Some services will incur costs. Chevrolet reserves the right to modify or discontinue Basic Care and Courtesy Care at any time.

*During the term of the New Vehicle Limited Warranty.

COURTESY TRANSPORTATION.

Ask your participating Chevrolet dealer for Courtesy Transportation if you drop your vehicle off for repairs under the New Vehicle Limited Warranty. Also see if you qualify for expense reimbursement and/or vehicle rental. Services vary at election of participating dealer.

WE'VE GOT YOUR BACK.

CHEVROLET CUSTOMER ASSISTANCE CENTER.

Call 1-800-222-1000 toll free to talk directly to specialists who can handle any product or service concern you may have.

FROM DAY ONE ...

The vehicle is checklist ready for you to drive away, and a full orientation awaits you on everything about your new Chevy SSR. For more information on 2004 Chevrolet car or truck products, call 1-800-800-2438 or visit us at chevy.com.

IMPORTANT: A WORD ABOUT THIS BROCHURE.

We have tried to make this catalog comprehensive and factual. We reserve the right, however, to make changes at any time, without notice, in prices, colors, materials, equipment, specifications, models, and availability. Since some information may have been updated since the time of printing, please check with your Chevrolet dealer for complete details. Chevrolet reserves the right to lengthen or shorten the model year for any product for any reason, or to start and end model years at different times.

AN IMPORTANT NOTE ABOUT ALTERATIONS AND WARRANTIES.

Installations or alterations to the original equipment vehicle (or chassis) as distributed by General Motors are not covered by the General Motors New Vehicle Limited Warranty. The special body company, assembler, equipment installer or upfitter is solely responsible for warranties on the body or equipment and any alterations (or any effect of the alterations) to any of the parts, components, systems or assemblies installed by GM. General Motors is not responsible for the safety or quality of design features, materials or workmanship of any alterations by third suppliers.

THE GM CARD® — WHAT ARE YOU CHANGING TOWARD?™

The GM Card rewards you 5% on every credit card purchase, making it the fastest way to save toward the GM car or truck of your dreams. For information or to apply for the GM Card, call 1-800-GM-CARD or visit our web site at gmcard.com.

UPDATED SERVICE INFORMATION.

Chevrolet dealers receive useful service bulletins about Chevrolet products. You may purchase them from Helm Incorporated by calling 1-800-551-4123 or by visiting www.helminc.com.

ASSEMBLY.

Chevrolet vehicles and their components are assembled or produced by different operating units of General Motors, its subsidiaries or suppliers to GM worldwide. We sometimes find it necessary to produce Chevrolet vehicles with different or differently sourced components than originally scheduled. Since some options may be unavailable when your vehicle is assembled, we suggest that you verify that your vehicle includes the equipment you ordered or, if there are changes, that they are acceptable to you.

ENGINES.

Chevrolet products are equipped with engines produced by GM Powertrain or other suppliers to GM worldwide. The engines in Chevrolet products may also be used in other GM makes and models.

GM PROTECTION PLAN.

The GM Protection Plan offers mechanical repair protection in addition to that provided by GM's New Vehicle Limited Warranty. Coverage for vehicle maintenance is also available. Ask your dealer about the GM Protection Plan. Coverage available only in the U.S. and Canada.

RUST-THROUGH CORROSION PROTECTION.

Chevrolet vehicles are designed and built to resist corrosion. All body and sheet metal components are warranted against rust-through corrosion for six years or 100,000 miles, whichever comes first. Application of additional rust-inhibiting materials is not required under the corrosion coverage and none is recommended. See your Chevrolet dealer for terms of this limited warranty.

General Motors, GM, the GM Emblem, the GM Protection Plan, Chevrolet, the Chevrolet Emblem, PROBUCK, Side Rail, TheftLock and 1-800-CHEV-USA are registered trademarks. Chevy, SSR and Venture are trademarks and GM Mobility is a service mark of the General Motors Corporation. GMAC is a registered service mark of the General Motors Acceptance Corporation. Buick is a registered trademark of the Buick Corp. HomeLink is a registered trademark of Johnson Controls, Inc. TORSEN is a registered trademark of Toyota Koki Automotive System North America Inc. ©2004 General Motors Corporation. All rights reserved.

Life in USA.

January 2004



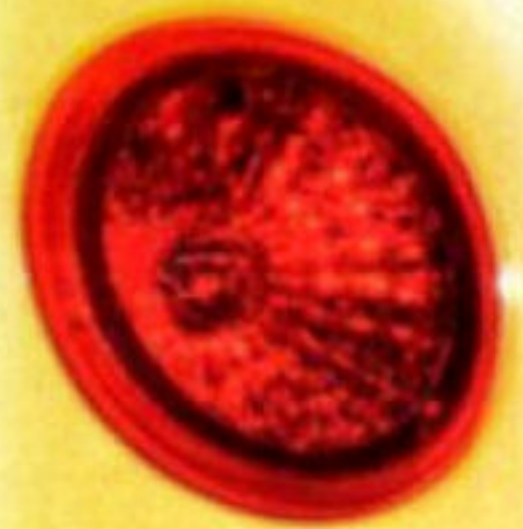
VISIT CHEVY.COM FOR: • 360° views • Detailed feature explanations and demonstrations • Pricing and offers • Dealer locations • Competitive comparisons • Warranty information • GMAC financing options. **AND VISIT GMMOBILITY.COM FOR:** • GM Mobility Program information.



SSR



SSR



CHEV SSR