

# Illustrations of the Single-Six

---

---

NUMBER ONE

ISSUED SEPTEMBER 1920

## *Packard* MOTOR CARS



*Property of*  
PACKARD MOTOR CAR COMPANY  
DETROIT, MICHIGAN

# INDEX

## OPEN CARS

	Page
Single-Six Touring.....	1- 2
Single-Six Runabout.....	3- 4

## ENCLOSED CARS

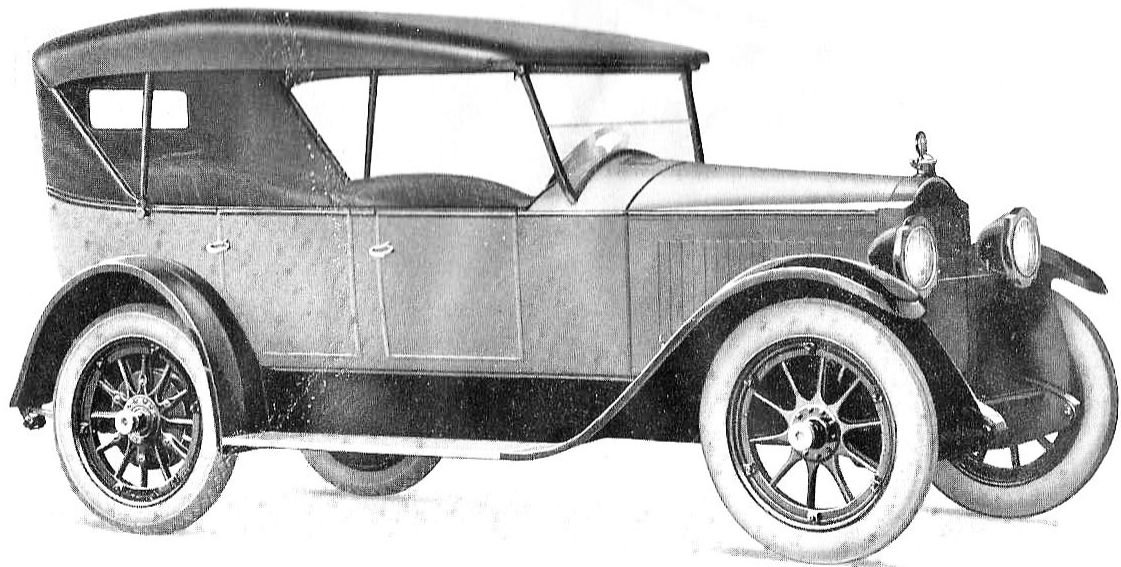
Single-Six Sedan.....	5- 7
Single-Six Coupe.....	8-10

## BODY DIMENSIONS

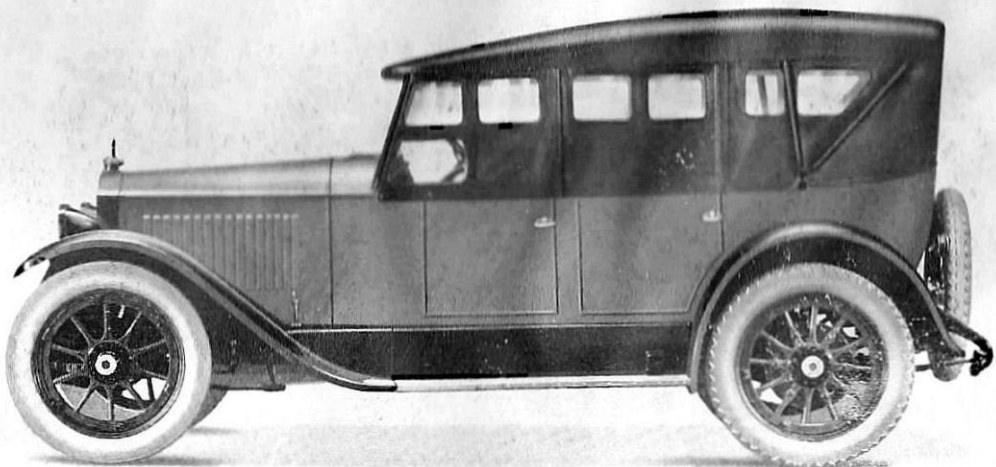
Touring—Plan View.....	12
Touring—Side Elevation.....	13
Runabout—Plan View.....	14
Runabout—Side Elevation.....	15
Sedan—Plan View.....	16
Sedan—Side Elevation.....	17
Coupe—Plan View.....	18
Coupe—Side Elevation.....	19

## MECHANICAL FEATURES

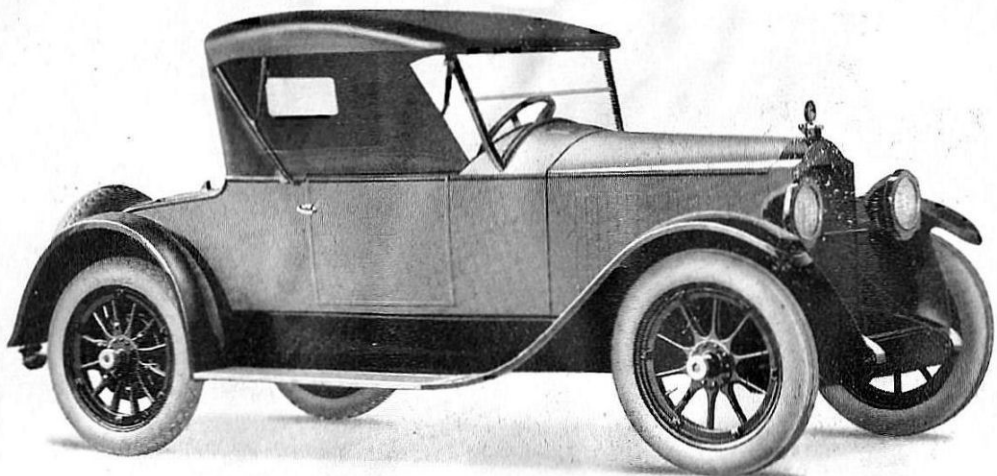
Instrument Board and Control.....	11
Chassis.....	20
Motor—Front View.....	21
Motor—Right Side.....	22
Motor—Left Side.....	23
Motor—Sectional View.....	24
Cooling System.....	25
Gasoline System.....	32
Carburetor and Fuelizer.....	26
Distributor.....	27
Front Axle.....	28
Rear Axle.....	30
Rear Axle—Sectional.....	31
Transmission and Clutch.....	29
Steering Gear.....	28
Wiring Diagram.....	33



Single-Six Touring—Five Passengers



Single-Six Touring—Five Passengers



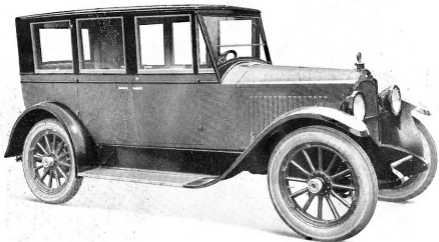
Single-Six Runabout—Two Passengers



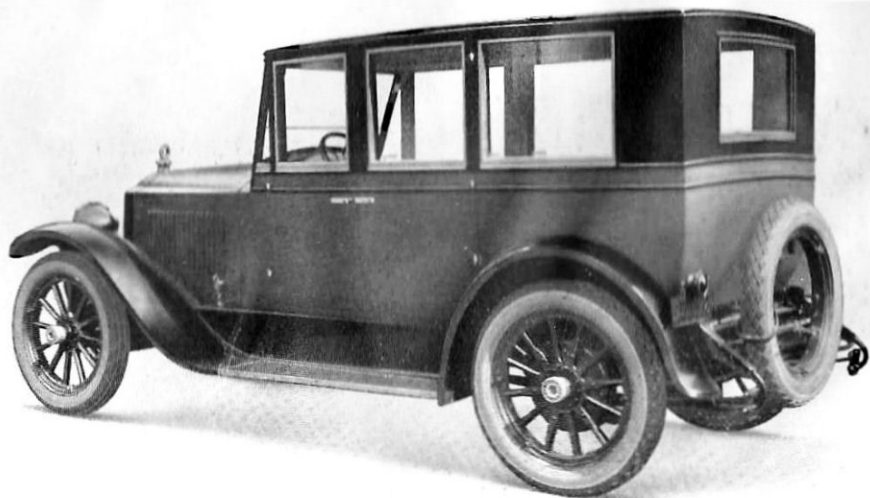
Runabout—Rear



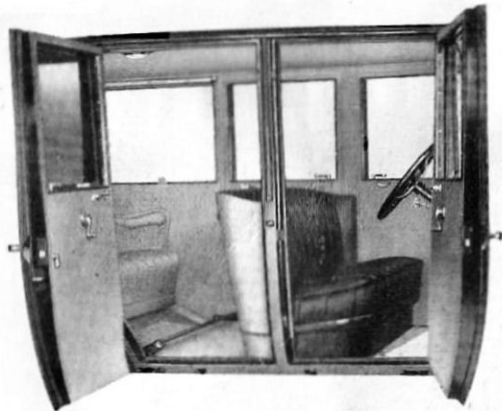
Runabout—Seating Arrangement



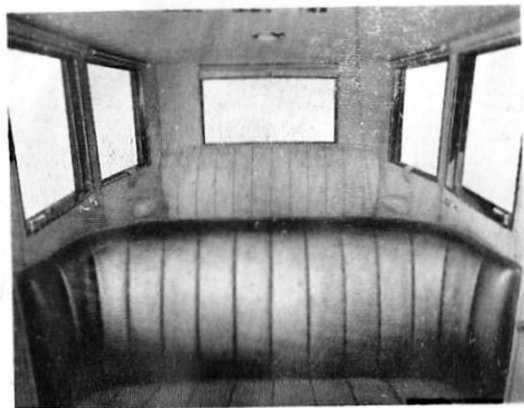
Single-Six Sedan—Five Passengers



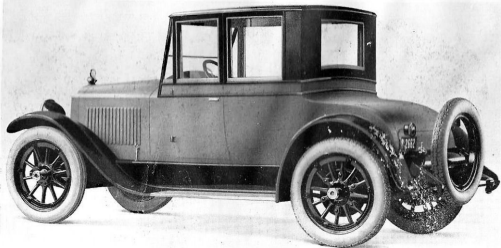
Single-Six Sedan—Five Passengers



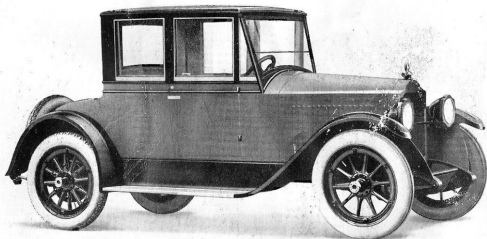
Sedan—Seating Arrangement



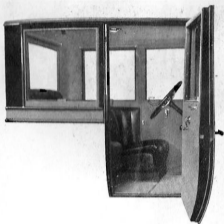
Sedan—Interior



Single-Six Coupe—Four Passengers



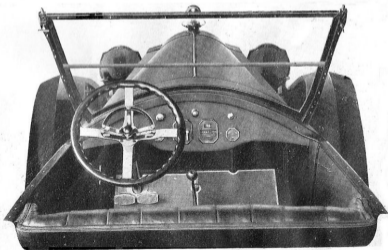
Single-Six Coupe—Four Passengers



Coupe—Seating Arrangement

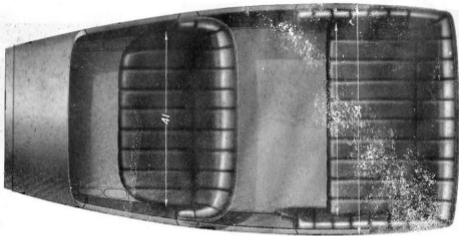


Coupe—Front

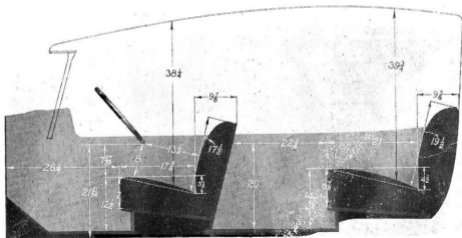


Single-Six Instrument Board and Control

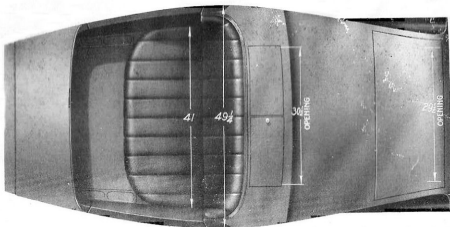




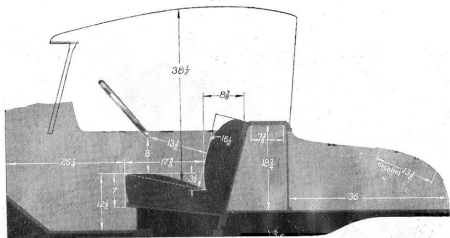
Touring Body—Plan View  
(Type Number 190)



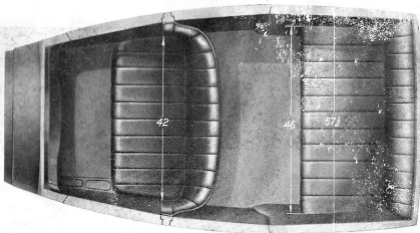
Touring Body—Side Elevation  
(Type Number 190)



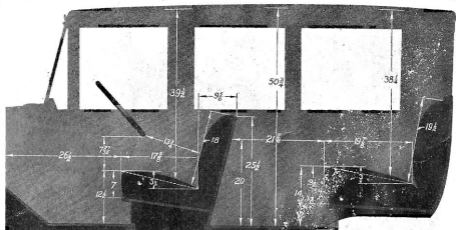
Runabout Body—Plan View  
(Type Number 191)



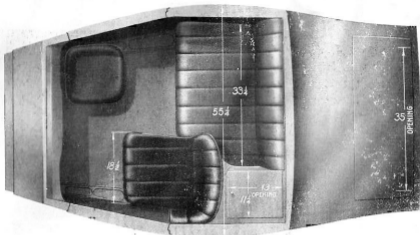
Runabout Body—Side Elevation  
(Type Number 191)



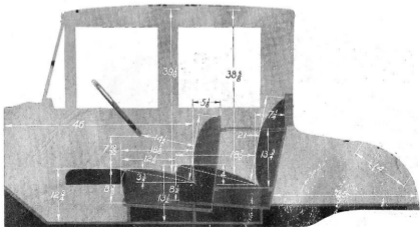
Sedan Body—Plan View  
(Type Number 192)



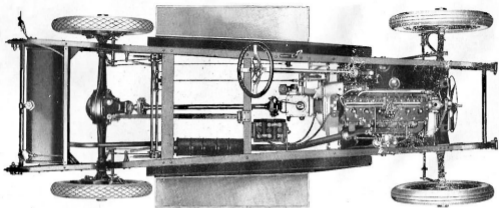
Sedan Body—Side Elevation  
(Type Number 192)



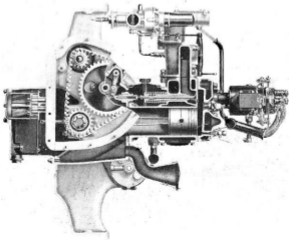
Coupe Body—Plan View  
(Type Number 193)

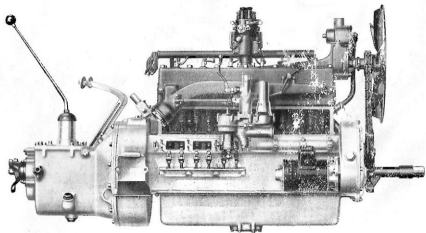


Coupe Body—Side Elevation  
(Type Number 193)

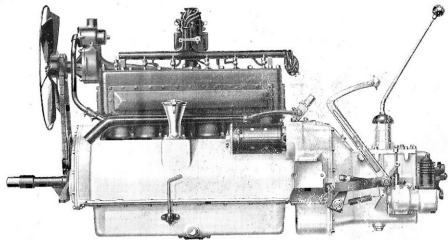


Single-Six Chassis

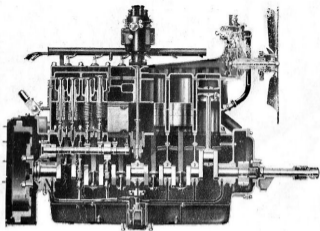
Motor—Front View  
(Section)



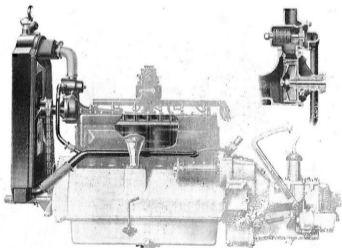
Motor—Right Side  
(Valve Cover Removed. Camshaft Rocker Arm Construction Exposed.)



Motor—Left Side

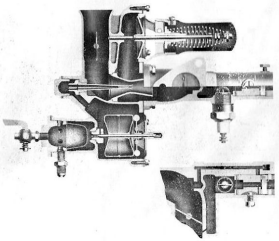


Motor—Sectional View

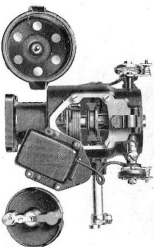
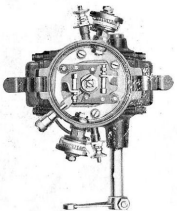


Cooling System.

Thermostat and Water Pump

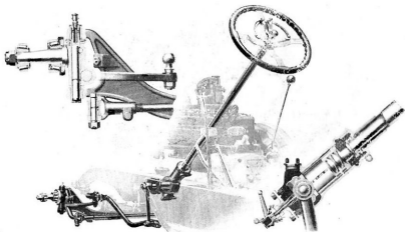


Sectional View of Carburetor  
and  
Fuelizer

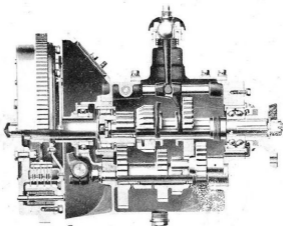


Ignition—Distributor

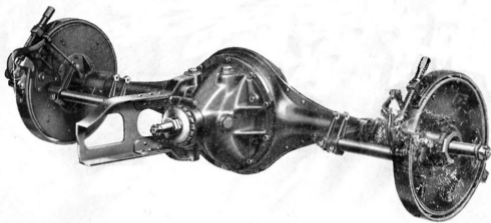




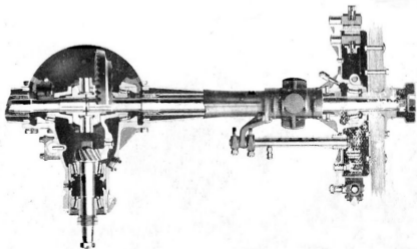
Steering Gear and Front Axle



Transmission and Clutch

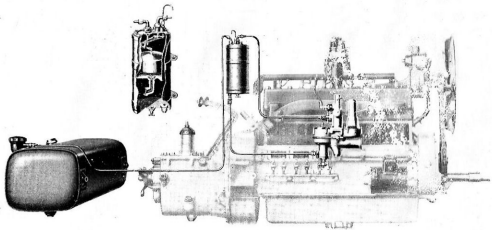


Rear Axle



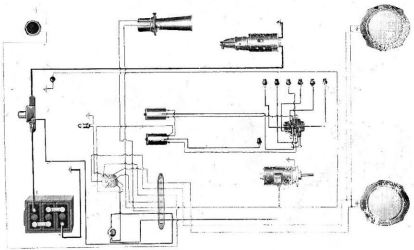
Rear Axle—Sectional View

82



Gasoline System

83



Ignition and Lighting  
(Wiring Diagram)

PACKARD MOTOR CAR COMPANY  
DETROIT, MICHIGAN